

References

- 1) Arnord, R.R., Churchward, H.M., Smith, K., Gozzard, J.R., Craig, M.A. and Munday, T.J., 1998; Classification and atlas of regolith-landform mapping units –exploration perspectives for the Yilgarn Craton-, CRC LEME open file report 2, Cooperative Research Center for Landscape Evolution and Mineral Exploration, West Australia
- 2) Bassot, J. P. et al., 1980; Carte géologique du Mali à 1/1,500,000. Ministère du Développement industriel. Direct. Nat. Min., Mali.
- 3) Bassot, J. P., et al., 1989; West african gold deposits in their Proterozoic lithostructural setting, Chronique de la recherche miniere, no.497, pp.3-98
- 4) Beus, A.A., Grabovskaya, L.I. and Tikhonova, N.V., 1976, Geochemistry of natural environment, p.1-223
- 5) Bourges P., et al., 1998; The geology of the Taparko gold deposit, Birimian greenstone belt, Burkina Faso, West Africa, Mineralum Deposita, vol.33, pp.591-605
- 6) Eggleton R.A. ed., 2001; The regolith glossary –surficial geology, soils and landscapes-, Cooperative Research Center for Landscape Evolution and Mineral Exploration, West Australia
- 7) JICA/MMAJ, 1992; Report on cooperative mineral exploration in the Bougouni Area, Mali, 1st year's report, in Japanese
- 8) JICA/MMAJ, 1993; Report on cooperative mineral exploration in the Bougouni Area, Mali, 2nd year's report, in Japanese
- 9) JICA/MMAJ, 1994; Report on cooperative mineral exploration in the Bougouni Area, Mali, 3rd year's report, in Japanese
- 10) JICA/MMAJ, 1998; Report on cooperative mineral exploration in the Kekoro – Baoule - Banifing Area, Mali, 1st year's report, in Japanese
- 11) JICA/MMAJ, 1999; Report on cooperative mineral exploration in the Kekoro – Baoule - Banifing Area, Mali, 2nd year's report, in Japanese
- 12) JICA/MMAJ, 2000; Report on cooperative mineral exploration in the Kekoro – Baoule – Banifing Area, Mali, 3rd year's report, in Japanese
- 13) JICA/MMAJ, 2001; Report on cooperative mineral exploration in the Baoule – Banifing Area, Mali, 1st year's report, in Japanese
- 14) JICA/MMAJ, 2002; Report on cooperative mineral exploration in the Baoule – Banifing Area, Mali, 2nd year's report, in Japanese
- 15) Millesi, J. P. et al., 1981; Notice explicative de la carte géologique à 1/1,500,000 de la République du Mali. BRGM-DNGM Mali.
- 16) Millesi, J. P. et al., 1989; West african gold deposits in their Lower Proterozoic lithostructural setting, Chronique de la recherche mineralisée, no.497, pp.1-98

- 17) Mumin, A. H., Fleet, M. E., and Chryssoulis, S. L., 1994; Gold mineralization in As rich mesothermal gold ores of the Bogosu-Prestea mining district of the Ashanti Gold Belt, Ghana : remobilization of “invisible” gold : *Mineralium Deposita*, v.29, pp.445-460
- 18) Olson, S. F. et al., 1992; Regional Setting, Structure, and Descriptive Geology of the Middle Proterozoic Syama Gold Deposit, Mali, West Africa, *Eco. Geo.*, vol.87, pp.310-331
- 19) Sumiko Consultants Co., Ltd., 2001; Report on mineral exploration in the Kekoro - Sagala Area, 1st year’s report, Mali, in Japanese
- 20) Sumiko Consultants Co., Ltd., 2002; Report on mineral exploration in the Kekoro - Sagala Area, 2nd year’s report, Mali, in Japanese

Appendix

Ap.1 Geological logging of DDH drilling

Ap.2 Auger profile

| site: MDDH-1 | | Depth (m): 0-40m | | No.1/4 | | | |
|--------------|--------|--|--|--|-------------------------------|---------------------------|----------|
| depth (m) | column | Qz vein and Fracture | Lithology | Description | color | Alteration Mineralization | Au (ppb) |
| 0 | | | Weathered psamitic schist | Strongly weathered coarse to fine grained psamitic schist Including secondly biotite concordant with schistosity, Hematization 0.70m: Showing a large amount of oxide mineral | yellowish brown | Hematized | 8 |
| | | | | 4.50-4.70m: Qz-Chl vein accompany with strongly hematization and oxide mineral | | | <1 |
| | | 3.8,0, 3.95, 4.40, 4.50m Cal-Chl vein | | 5.10m: Oxide mineral dissemination | | | 2 |
| | | 4.5-4.7m Qz-Chl vein | | 5.40-5.80m Brecciated zone, Filled with Cal-Qz, With a large amount of oxide mineral | | | 8 |
| | | | | 6.60-7.20m: With a large amount of secondly biotite | | | 7 |
| | | | | 7.20-7.70m: Qz vein accompany with oxide mineral | | | 10 |
| | | 7.2-7.5m, 7.8-7.7m Qz vein | 7.70-8.8m: With rarely secondly biotite | 4 | | | |
| 8.80 | | | Psamitic schist | Coarse grained psamitic schist, Strongly hematization | reddish gray | Hematized | 5 |
| 10 | | 8.8-11.4m Qz veinlet and Qz Nt | | 8.80-11.40m: Qz network accompany with oxide mineral | | | 6 |
| | | | | 11.50-12.50m: With a large amount of secondly biotite | | | 23 |
| | | 12.5-13.0m Qz Nt | | 12.50-13.00m: Showing green spot (chloritized) around Qz network | | | 11 |
| | | | | 13.50-15.20m: Qz-Chl-(Cal?) fill fracture, With oxide mineral dissemination | | | 6 |
| | | 15.2-17.9m Irregular shaped Qz veinlet | | 15.20-17.90m Qz veinlet accompany with a small amount of oxide mineral | | | 13 |
| | | | | 17.90-19.20m Showing hematite dissemination around quartz network | | | 12 |
| | | 18.1-19.2m Qz Nt | | | | | 14 |
| 19.20 | | | | Fine grained psamitic schist | | | 12 |
| 20 | | 20.3-20.4m, 20.5-20.6m 21.0m, 21.1m Irregular shaped Qz veinlet and vein | | 19.20-20.10m Showing strongly oxide mineral dissemination around marbled quartz and calcite | | | 14 |
| | | 21.3-23.2m Qz veinlet $\angle 50^\circ$ | 21.30-23.20m Quartz veinlet accompany with oxide mineral | 4 | | | |
| 23.20 | | | Psamitic schist | Coarse grained psamitic schist, Showing some cycles of graded bedding, Hematised | reddish gray | Hematized | 11 |
| | | 25.4-25.9m Irregular shaped Qz | | 23.20-25.00m Showing chloritized spot around with smoky-transparent quartz vein | | | 8 |
| | | 25.9-26.3m Qz veinlet ($\angle 5^\circ$, wide: 5mm) | | 25.40-25.90m Quartz attached with oxide mineral | | | 6 |
| | | 26.5m, 26.6m 27.2m Cal-Chl veinlet | | 25.90-27.20m Quartz veinlet and calcite veinlet attached with oxide mineral | | | 2 |
| | | 28.1-28.2m Cal-Qz Nt | | | | | 13 |
| | | 27.5-29.0m Some Qz veinlet ($\angle 40^\circ$) | | 29.20-29.50m Showing chloritized spot around with calcite-quartz veinlet | | | 17 |
| | | | | 31.90-32.20m Chloritized | | | 15 |
| | | 30.7-31.1m Some Cal-Chl veinlet | | 32.20-32.70m Brecciated psamitic schist, Filled clay, calcite and quartz ($\angle 45^\circ$) | | | 11 |
| 32.20 | | | | 33.10-33.50m Showing chloritized spot around with quartz vein | | | 13 |
| 32.70 | | 33.1-33.5m 3 Qz vein ($\angle 45^\circ$, wide: 10mm) | | | | | 16 |
| 34.70 | | | Psamitic schist | Fine grained psamitic schist, Showing chloritized spot | greenish gray | Hematized | 12 |
| 36.00 | | 33.7-39.5m Some Qz veinlet | | Coarse grained psamitic schist | | | 9 |
| | | | | 36.80-37.00m With hematite dissemination | | | 20 |
| 37.50 | | | | Fine grained psamitic schist, Showing chloritized spot | | | 9 |
| 40 | | | Sheared rock | 39.50-40.00m Oxide mineral filled schistosity | yellowish gray - reddish gray | Chloritized | 11 |
| | | | | | | | <1 |
| | | | Psamitic schist | | yellowish gray - reddish gray | Hem | <1 |
| | | | | | | | <1 |
| | | | | | | Chloritized | 3 |
| | | | | | | Chloritized | <1 |
| | | | | | | Chloritized | 2 |

site: MDDH-1

Depth (m): 40-80m

No.2/4

| depth (m) | column | Qz vein and Fracture | Lithology | Description | color | Alteration Mineralization | Au (ppb) |
|-----------|--------|---|-----------------------------------|--|------------------------------|---------------------------|----------|
| 40 | | 40.2-42.0m Qz vein and veinlet (<1cm) | Psamitic schist | Coarse grained psamitic schist, hematisation with many holes (calcite origin?) | reddish gray | Hematite | 7 |
| 42.8 | | 42.8m some Qz veinlet with Hem (∠40°) | | 42.5-42.8m Showing chloritized spot with oxide mineral dissemination | | | 17 |
| | | 43.7-44.6m Qz veinlet (7 veinlet, wide; 1mm ∠90°) | | Fine grained psamitic schist; hematisation | | | 66 |
| | | 44.7-44.9m irregular shaped Qz veinlet | | 42.8-44.0m Showing chloritized spot concordant with schistosity | | | 33 |
| 45.1 | | 45.1-46m Qz veinlet and vein (<10mm, ∠60°) | | 44.6-45.1m oxide dissemination | | | 113 |
| | | 47.2-47.9m Qz veinlet (11 veinlet, wide; 1mm) | Psamitic schist to pelitic schist | Coarse grained psamitic schist | violet brown - green | Chloritized Hem | 79 |
| | | 46.1-47.3m Weakly chloritized and hematite dissemination | | 46.1-47.3m Weakly chloritized and hematite dissemination | | | 14 |
| 48.7 | | 48.5-51.2m Qz veinlet and Qz, mainly concordant with schistosity | Psamitic schist to pelitic schist | Coarse grained psamitic schist to pelitic schist, 3 cycles of graded bedding(48.7-50.1m, 50.1-51.2m, 51.2-53.6m) | reddish gray - gray | Chloritized Hem | 21 |
| 50 | | 51.6m Qz vein | | 48.7-51.0m Some irregular shaped quartz-calcite veinlet | | | 18 |
| | | 51.9-53.20m Qz veinlet, mainly concordant with schistosity (∠42°-55°) | Psamitic schist to pelitic schist | 51.4-52.0m Hematite dissemination and weakly chloritization | greenish gray - violet | Chloritized Hem | 23 |
| | | 53.4-53.6m Qz-Cal filled fracture | | 51.4-52.0m Hematite dissemination and weakly chloritization | | | 984 |
| 53.6 | | 53.6-56.1m Qz veinlet ∠40°-60° | Psamitic schist to pelitic schist | Coarse grained psamitic schist, some veinlet attached with hematite dissemination | gray - light gray | Hem | 7 |
| 54.9 | | 56.5-56.7m Hematite dissemination | | Fine grained psamitic schist | | | 1034 |
| | | 58.4m Cal-Chi filled fracture | Psamitic schist | 56.5-56.7m Hematite dissemination | gray - light gray | Hem | 363 |
| | | 59.5-60.5m Some Qz veinlet (<2mm) | | Coarse grained psamitic schist, partly medium to fine grained, Weakly hematization | | | 30 |
| | | 60.8-65.0m Qz veinlet mainly concordant with schistosity (∠60°, 2mm) | Psamitic schist | 59.5m Quartz veinlet with hematite | pinkish gray - gray | Chloritoid | 16 |
| | | 62.0-63.9m Irregular shaped Qz-Cal veinlet | | 62.0-63.9m weakly chloritization around with quartz-calcite veinlet | | | 20 |
| | | 65.0-65.5m irregular shaped Qz-Cal vein (10mm) | Psamitic schist | 65.5-66.5m Calcite-quartz veinlet with many holes With hematite dissemination and hematite filled fracture one hematite veinlet attached with chalcopyrite | pinkish gray - greenish gray | Chloritoid | 17 |
| | | 66.6-66.9m, 67.4-67.8m Marbled Qz | | 66.5-70.5m With chloritoid (or secondly biotite?) | | | 22 |
| | | 68.0-69.5m Qz veinlet mainly concordant with schistosity (<1mm) | Psamitic schist | Coarse to fine grained psamitic schist | pinkish gray - greenish gray | Chloritoid | 25 |
| | | 69.5-70.5m Qz Nt and Qz vein (wide; 10mm) | | 69.5-70.5m Chloritized green spot around with quartz network | | | 9 |
| 69.5 | | 70.8-72.0m Some Qz veinlet concordant with schistosity (∠35°-40°) | Psamitic schist | 70.5-73.3m With chloritoid | pinkish gray - greenish gray | Chloritoid | 10 |
| 70 | | 73.3-74.2m Qz-Cal vein and veinlet | | Coarse to fine grained psamitic schist | | | 13 |
| | | 74.2-76.0m Marbled Cal-Qz | Psamitic schist | Medium grained psamitic schist with chloritized green spot Marbled calcite-quartz with many holes, With chloritoid | greenish gray - light gray | Chloritoid | 42 |
| | | 76.4-77.0m Qz veinlet and network | | Coarse to fine grained psamitic schist | | | 2 |
| | | 78.7m Qz vein (50mm) with Chlorite | Psamitic schist | 76.4-77.0m With chloritoid | light gray | Chloritoid | <1 |
| | | 79.4-80.0m Qz Nt | | 77.2-78.2m Chloritization (77.8-78.2m many green spot) | | | 10 |
| 80 | | | Psamitic schist | Coarse grained psamitic schist with a small amount of chloritoid | light gray | Chloritoid | 10 |
| | | | | | | | 239 |
| | | | Psamitic schist | | light gray | Chloritoid | 17 |
| | | | | | | | 1429 |
| | | | Psamitic schist | | light gray | Chloritoid | 1509 |
| | | | | | | | 1150 |

site: MDDH-1

Depth (m): 80-120m

No.3/4

| depth (m) | column | Qz vein and Fracture | Lithology | Description | color | Alteration Mineralization | Au (ppb) |
|-----------|--------|--|-----------------|--|-------------------------------|-----------------------------------|------------------|
| 80 | | 80.0-81.0m marbled Qz and Qz veinlet (mainly $\angle 60-70^\circ$, <math>< 2\text{mm}</math>) | Psamitic schist | Fine to medium grained psamitic schist, Showing reverse graded bedding 80.0-81.0m a trace of chalcopyrite attach with quartz veinlet | gray - light gray | Chalcopyrite | 919 |
| | | 82.9-85.0m Cal-Qz vein and veinlet | | 82.9-85.0m With many holes (calcite origin) | gray - greenish gray | | 867 |
| 85.0 | | 86.2-86.5m Qz veinlet out schistosity (3mm, 2mm) | Pelitic schist | Pelitic schist to fine grained psamitic schist, Showing reverse graded bedding | gray - light gray | | 5050 |
| | | 86.6-88.1m Some Cal-Qz vein and veinlet | | 86.6-87.7m Oxide mineral attach with calcite-quartz vein | | | 136 |
| 87.7 | | | Psamitic schist | Coarse (partly fine) grained psamitic schist, reverse graded bedding Showing a small amount of chloritoid | light gray | Chloritoid Limonite | 2575 |
| | | 89.3-90.8m Some Qz veinlet | | 89.6-92.2m fracture with hematite film and limonite | | | 180 |
| | | 92.1-92.2m Qz Nt | | 92.7-96.2m with limonite dissemination | | | 52 |
| | | 92.7-95.7m Qz-Cal vein and veinlet | | | | | 240 |
| 90 | | | Sheared zone | Brecciated psamitic schist and pelitic schist, Strongly chloritization Filled quartz and calcite | greenish gray - whitish green | Chloritoid | 11 |
| | | 98.4-102.6m Cal-Qz vein and veinlet | | Pelitic schist, partly brecciated, Showing chloritized green spot 98.5-99.0m A trace of pyrite and chalcopyrite | | | 9 |
| 96.2 | | | Pelitic schist | 102.2m pyrite attach with calcite-quartz vein | gray | Pyrite | 14 |
| | | 102.6-107.1m many irregular shaped Cal-Qz veinlet, some veinlet concordant with schistosity | | Pelitic schist to fine grained pelitic schist with chloritoid, Weakly chloritization, Showing reverse graded bedding Psamitic schist part; Showing fine grained pyrite dissemination and pyrite patch attach with Cal-Qz veinlet Pelitic schist part; Showing pyrite patch attach with Cal-Qz veinlet and pyrite filled micro-fracture | | | 28 |
| 98.4 | | | Meta volcanics | Intrusion of meta volcanics ($\angle 55^\circ$), Strongly chloritization Chalcopyrite attach calcite-quartz veinlet | black - gray | Chalcopyrite | 17 |
| | | 107.6-108.2m Qz and Cal-Qz veinlet and filled fracture 108.4-108.8m irregular shaped Cal-Qz vein and veinlet | | Pelitic schist to fine grained pelitic schist with chloritoid | | | 24 |
| 100 | | | Pelitic schist | 109.2-109.8m Chloritized, Pyrite attach with Cal-Qz veinlet | whitish green - white | Carbonatization Chloritization | 16 |
| | | 109.2-109.8m irregular shaped Cal-Qz veinlet | | 109.8-113.8m Weakly silicified (or carbonatization?) | | | 6 |
| 102.6 | | | Psamitic schist | Fine grained psamitic schist, Strongly carbonatization and chloritization, Coarse grained pyrite attach with calcite-quartz | gray | Pyrite | 31 |
| | | 112.8-113.8m irregular shaped Cal-Qz veinlet | | 115.8-116.2m Brecciated, Filled Calcite, With pyrite | | | 36 |
| 108.8 | | | Psamitic schist | Fine to medium grained psamitic schist with coarse grained pyrite dissemination, Coarse grained pyrite attach with quartz veinlet and calcite and pyrite fill fracture | gray | | 31 |
| | | 116.2-120.0m Qz veinlet | | | | | 2 |
| 109.2 | | | Pelitic schist | | black - gray | Chloritoid | <math>< 1</math> |
| | | 111.1-111.4m Secreted Qz | | | | | 2 |
| 110 | | | Psamitic schist | | whitish green - white | Chloritoid | 51 |
| | | 113.8-116.2m Cal-Qz vein and filled fracture | | | | | 78 |
| 113.8 | | | Psamitic schist | | gray | Pyrite | 12 |
| | | 116.2-120.0m Qz veinlet | | | | | 22 |
| 116.2 | | | Psamitic schist | | gray | | 59 |
| | | | | | | | 4 |
| 120 | | | Psamitic schist | | gray | | 87 |
| | | | | | | | 1 |
| | | | Psamitic schist | | gray | | 22 |
| | | | | | | | 73 |
| | | | Psamitic schist | | gray | | 2039 |
| | | | | | | | 23 |
| | | | Psamitic schist | | gray | | 95 |
| | | | | | | | 20 |
| | | | Psamitic schist | | gray | | 29 |
| | | | | | | | 51 |
| | | | Psamitic schist | | gray | | 13 |
| | | | | | | | |

site: MDDH-1

Depth (m): 120-150.10m

No.4/4

| depth (m) | column | Qz vein and Fracture | Lithology | Description | color | Alteration Mineralization | Au (ppb) | |
|-----------|--------|--|-----------------|--|--|---------------------------|---------------|-----|
| 120 | | 120.6m Qz vein | Psamitic schist | 120.5-120.8m Showing secondly biotite concordant with schistosity | gray | | 13 | |
| 120.8 | | 120.8-121.1m Qz vein | Quartz vein | Quartz vein, Showing a large amount of secondly biotite around contact zone | white | | 28 | |
| 121.1 | | 121.5-123.2m Qz veinlet (<2mm) | Psamitic schist | Fine to medium grained psamitic schist | gray | | 20 | |
| | | 123.6-123.9m irregular shaped Qz veinlet | | 121.1-121.3m Showing secondly biotite concordant with schistosity | | | gray | 69 |
| | | 124.0-126.1m some Qz.Nt | | 121.3-121.7m pyrite patch concordant with schistosity and pyrite filled microfracture | | | | 37 |
| | | 126.5-126.8m some Qz vein | | 121.7-123.0m Weakly silicified, With a trace of pyrite dissemination | gray - brownish gray | | 52 | |
| | | 126.8-129.2m Qz Nt and secreted Qz | | 123.2-126.8m Silicified around with quartz network, Pyrite dissemination (<1%) | dark gray | | 409 | |
| | | | Psamitic schist | 126.8-127.8m Showing secondly biotite concordant with schistosity | dark gray | | 46 | |
| | | | | A trace of coarse grained pyrite dissemination | | | brownish gray | 378 |
| | | | | 127.8-130.2m Silicification around with quartz network and secreted quartz, Pyrite dissemination (1-2%) and arsenopyrite dissemination | | | 519 | |
| | | | | Pelitic schist | Pelitic schist with secondly biotite | | dark gray | 46 |
| | | | | | 130.2-130.9m, 131.2-131.4m, 132.1-132.8m Pyrite dissemination concordant with schistosity (-2%) and pyrite fill micro-fracture | | | 51 |
| | | | Psamitic schist | 130.9-131.2m, 131.4-132.1m Pyrite dissemination (<1%) and arsenopyrite and chalcopyrite around with quartz vein | gray - dark gray | | 16 | |
| | | | | Fine grained psamitic schist | | | 7 | |
| | | | | 132.8-136.1m, 136.6-136.8m Showing biotite spot (φ;5-10mm) with pyrite, Coarse grained pyrite dissemination and pyrite fill micro-fracture | | | | 29 |
| | | | | 135.7-136.3m some Cal veinlet | 182 | | | |
| | | | | 136.1-136.6m, 136.8-137.8m Pyrite fill fracture and attach veinlet | 9 | | | |
| | | | Psamitic schist | Coarse grained psamitic schist with a trace of pyrite, Weakly silicified, | black | 26 | | |
| | | | | Fine grained psamitic schist with a trace of pyrite dissemination | | 15 | | |
| | | | | 140.2-140.6m Showing epidote | 20 | | | |
| | | | | 140.6-141.4m Showing secondly biotite concordant with schistosity | 169 | | | |
| | | | | Coarse to medium grained psamitic schist with a trace of pyrite dissemination | 17 | | | |
| | | | Psamitic schist | 141.4-143.6m Silicified | black | 43 | | |
| | | | | 143.6-145.0m Showing a small amount of secondly biotite | | 10 | | |
| | | | | Fine grained psamitic schist partly pelitic schist, with pyrite dissemination (1-2%, concordant with schistosity) | 17 | | | |
| | | | Psamitic schist | 145.0-146.6m Showing biotite spot (φ;7-15mm) | black | 12 | | |
| | | | | Coarse to medium grained psamitic schist, weakly silicified, with a trace of pyrite dissemination | | 7 | | |
| | | | Psamitic schist | | | 12 | | |
| | | | | | | | 14 | |
| 150 | | 149.4m secreted Qz | | | | | 3 | |
| 160 | | | | | | | | |

| site: MDDH-2 | | Depth (m): 0-40m | | No.1/4 | | | |
|--------------|--------|---|---------------------------|--|-------------------------------------|---------------------------|--------|
| depth (m) | column | Qz vein and Fracture | Lithology | Description | color | Alteration Mineralization | Sample |
| 0 | | 1.1m Qz veinlet $\angle 90^\circ$ 1-2mm | Weathered psamitic schist | Weathered coarse to fine grained psamitic schist, greenish altered 1.00-1.20m; secondly biotite 4.70-5.10m; secondly biotite 5.10-5.60m; hematite dissemination 5.65-7.820m; secondly biotite | greenish gray | Hematite dissemination | 21 |
| | | 2.9m Qz-Hem $\angle 70^\circ$ 5mm | | | | | 8 |
| | | 4.0-4.8m Qz-Hem, 20-10mm | | | | | 79 |
| | | 5.1-6.9m Qz veinlet 1-5mm | | | | | 791 |
| 7.00 | | | Weathered pelitic schist | Weathered pelitic schist, partly coarse grained psamitic schist 10.40-10.64m: $\angle 10^\circ$ pinkish vein, wide is 20mm (Quartz vein with hematite?) | dark purplish brown | Hematite dissemination | 9 |
| | | 9.0-10.0m Qz veinlet $\angle 70-80^\circ$ 1mm-10mm | | | | | 6 |
| | | 10.5m Pinkish vein | Weathered psamitic schist | Weathered coarse grained psamitic schist | greenish gray | Hematite dissemination | 3 |
| | | 10.95m, 11.4m Qz veinlet, $\angle 70^\circ$ | | | | | 4 |
| 10 | | 12.65-12.75m Qz vein 3mm-10mm | Weathered pelitic schist | Weathered pelitic schist 16.50-17.50m: irregular Quartz veinlet network | dark purplish gray | Hematite dissemination | 12 |
| | | 14.5-16.3m Qz veinlet, $\angle 40-60^\circ$ | | | | | 10 |
| | | 16.5-16.7m Qz Nt | | | | | 4 |
| 10.90 | | 16.7m Qz vein with Hem 30mm | Weathered psamitic schist | Weathered coarse grained psamitic schist, partly pelitic schist | greenish gray | Hematite dissemination | 6 |
| | | 17.5-19.4m Qz veinlet, $\angle 40-70^\circ$ | | | | | 1 |
| 13.70 | | | Weathered psamitic schist | coarse grained psamitic schist 29.60-30.40m: Weakly chloritized fine grained psamitic schist. Hematite dissemination dot ($\phi < 1mm$) and hematite stain along with schistosity. 30.40-33.80m: Hematite dissemination spot line up concordant with schistosity | dark purplish gray | Hematite dissemination | 10 |
| | | 20.2-20.8m, Qz veinlet $\angle 60^\circ$, 3-10mm | | | | | 9 |
| | | 21.1-22.9m, Qz veinlet $\angle 70^\circ$ | Psamitic schist | coarse grained psamitic schist 29.60-30.40m: Weakly chloritized fine grained psamitic schist. Hematite dissemination dot ($\phi < 1mm$) and hematite stain along with schistosity. 30.40-33.80m: Hematite dissemination spot line up concordant with schistosity | dark purplish gray | Hematite dissemination | 10 |
| | | 24.5-25.2m, Qz veinlet $\angle 80^\circ$ | | | | | 15 |
| 17.55 | | | Psamitic schist | coarse grained psamitic schist 29.60-30.40m: Weakly chloritized fine grained psamitic schist. Hematite dissemination dot ($\phi < 1mm$) and hematite stain along with schistosity. 30.40-33.80m: Hematite dissemination spot line up concordant with schistosity | greenish gray | Hematite dissemination | 15 |
| | | 27.2-27.6m, 28.5-28.8m, Qz Nt, irregular shape | | | | | 12 |
| 20 | | | Psamitic schist | coarse grained psamitic schist 29.60-30.40m: Weakly chloritized fine grained psamitic schist. Hematite dissemination dot ($\phi < 1mm$) and hematite stain along with schistosity. 30.40-33.80m: Hematite dissemination spot line up concordant with schistosity | greenish gray | Hematite dissemination | 9 |
| | | 20.2-20.8m, Qz veinlet $\angle 60^\circ$, 3-10mm | | | | | 14 |
| | | 21.1-22.9m, Qz veinlet $\angle 70^\circ$ | Psamitic schist | coarse grained psamitic schist 29.60-30.40m: Weakly chloritized fine grained psamitic schist. Hematite dissemination dot ($\phi < 1mm$) and hematite stain along with schistosity. 30.40-33.80m: Hematite dissemination spot line up concordant with schistosity | dark purplish gray | Hematite dissemination | 76 |
| | | 24.5-25.2m, Qz veinlet $\angle 80^\circ$ | | | | | 18 |
| 24.80 | | | Psamitic schist | coarse grained psamitic schist 29.60-30.40m: Weakly chloritized fine grained psamitic schist. Hematite dissemination dot ($\phi < 1mm$) and hematite stain along with schistosity. 30.40-33.80m: Hematite dissemination spot line up concordant with schistosity | greenish gray | Hematite dissemination | 13 |
| | | 27.2-27.6m, 28.5-28.8m, Qz Nt, irregular shape | | | | | 13 |
| | | 29.6-29.9m, Qz veinlet, $< 1mm$ | Pelitic schist | Weakly chloritized pelitic schist. 33.80-34.10m, 36.10-37.0m: Hematite dissemination 34.30-34.40m Qz-Cal-Chl vein with hematite 34.60-34.90m: Chloritized zone | greenish gray | Hematite dissemination | 33 |
| | | 30.4m Qz vein with Hem and Chl, $\angle 30^\circ$ | | | | | 18 |
| | | 30.4-31.3m Qz veinlet $\angle 60-80^\circ$, $< 3mm$ | Pelitic schist | Weakly chloritized pelitic schist. 33.80-34.10m, 36.10-37.0m: Hematite dissemination 34.30-34.40m Qz-Cal-Chl vein with hematite 34.60-34.90m: Chloritized zone | greenish gray | Hematite dissemination | 15 |
| | | 31.3-33.8m Qz veinlet $< 2mm$, irregular shape | | | | | 10 |
| 33.80 | | | Pelitic schist | Weakly chloritized pelitic schist. 33.80-34.10m, 36.10-37.0m: Hematite dissemination 34.30-34.40m Qz-Cal-Chl vein with hematite 34.60-34.90m: Chloritized zone | greenish gray | Hematite dissemination | 9 |
| | | 33.8-34.3m Qz veinlet, $\angle 60^\circ$ Cal-Qz-Chl veinlet | | | | | 12 |
| | | 35.0-35.1m secreted Qz-Cal | Psamitic schist | Coarse grained psamitic schist, partly fine grained 37.50-38.70m: Secondly biotite, hematite dissemination 38.70-40.30m: Weakly hematisation | greenish gray | Hematite dissemination | 6 |
| | | 36.5m $\angle 56^\circ$ Fracture concordant with schistosity, with Hem film | | | | | 9 |
| 37.50 | | | Psamitic schist | Coarse grained psamitic schist, partly fine grained 37.50-38.70m: Secondly biotite, hematite dissemination 38.70-40.30m: Weakly hematisation | greenish gray partly purplish brown | Hematite dissemination | 8 |
| | | 37.9-38.1, 38.4-38.5m Qz vein with Hem & Chl | | | | | 8 |
| 40 | | | Psamitic schist | Coarse grained psamitic schist, partly fine grained 37.50-38.70m: Secondly biotite, hematite dissemination 38.70-40.30m: Weakly hematisation | green - reddish gray | Hematite dissemination | 9 |
| | | | | | | | 11 |

site: MDDH-2

Depth (m): 40-80m

No.2/4

| depth (m) | column | Qz vein and Fracture | Lithology | Description | color | Alteration Mineralization | Sample |
|-----------|--------|--|--|--|----------------------|---------------------------|--------|
| 40 | | 40.2-42.0m Qz vein and veinlet (<1cm) | Psamitic schist | Coarse grained psamitic schist, Hematisation Showing chloritized spot (diameter: 5mm) | reddish gray - green | | 13 |
| | | 42.8m Qz vein, 3cm $\angle 20^\circ$ | | 42.8m: Chloritized around quartz vein | | | 6 |
| 43.3 | | | | Fine grained psamitic schist, Strongly hematisation Showing chloritized spot (diameter: 5mm) 44.4-44.7m: Cal-Chl vein (wide:4cm, 3cm $\angle 30^\circ$) | reddish gray | | 10 |
| | | | | | | | 8 |
| | | | | | | | 11 |
| 45.9 | | 46.2-47.2m: Qz veinlet <1mm, $\angle 60-80^\circ$ 20 veinlet / m | | Coarse grained psamitic schist, 45.9-50.0m; Strongly hematisation. Showing chloritized spot | Brownish gray | | 11 |
| | | | | | | | 48 |
| | | | | | | | 13 |
| | | 48.1-49.4m: Qz veinlet <4mm, $\angle 60^\circ$ 10 veinlet / m | | | | | 12 |
| | | 48.94m: Cal-Qz vein | | | | | 10 |
| 50 | | 50.2-51.4m: Qz veinlet <4mm, $\angle 50-60^\circ$ 10 veinlet / m | | 50.0-53.7m; Chloritization and weakly hematization 50.4-51.4m: Strongly chloritization | green - reddish gray | | 10 |
| | | | | | | | 13 |
| | | | | | | | 13 |
| | | 53.2-53.3m: Cal-Chl veinlet with Hem 3mm, 8mm | | 53.7-55.3m; Strongly hematisation. Showing chloritized spot | Brownish gray | | 14 |
| | | | | | | | 11 |
| 55.3 | | | Fine grained psamitic schist. Hematisation | | 6 | | |
| | | 57.5m: Qz Nt, wide:3cm | 57.7-59.0m: Strongly hematisation | greenish gray - reddish gray | 8 | | |
| | | | | | 5 | | |
| 58.9 | | 58.6-58.7m brecciate zone | 58.6-58.7m: Sheared rock, Brecciated schist filled Qz-Cal with Hem | | 3 | | |
| 60 | | 60.6-60.7m: Qz Nt | Coarse grained psamitic schist 58.9-61.3m: Strongly hematisation 59.5-60.0m: Cal-Chl vein with many hole ($\angle 40^\circ$) 60.0-61.3m: iron-oxide stain along with schistosity 61.3-62.2m: Hematisation, Showing chloritized spot 62.2-65.7m: Strongly hematisation 63.2-63.7m: iron-oxide stain along with micro-fracture | brown partly greenish gray | 14 | | |
| | | | | | 13 | | |
| | | | | | 12 | | |
| | | 62.2-62.6m: Qz-cal veinlet, <5mm, $\angle 60-80^\circ$ 62.8m: Qz Nt, wide:5cm | | | 8 | | |
| | | 63.4-63.9m: Qz veinlet, 8 veinlet/m, <1mm, $\angle 60^\circ$ | | | 9 | | |
| | | 64.0m: smoky Qz vein | | | 6 | | |
| | | 64.1-64.8m; Cal-Qz vein | 64.1-64.8m: Cal-Qz vein and veinlet with Chl | | 8 | | |
| 65.7 | | | Sheared rock | 65.7-67.0m: Brecciated psamitic schist | reddish gray - gray | 12 | |
| 67.0 | | | | | | 18 | |
| | | | | | 9 | | |
| | | | | | 5 | | |
| 70 | | 68.9-69.9m: Qz and Cal-Qz veinlet, Qz Nt | Coarse grained psamitic schist, Strongly hematisation 67.9-68.9m: iron-oxide stain along with schistosity and fill micro-fracture 70.3-70.9m: Cal-Qz fill fracture 71.0m: Cal-Qz-Chl vein $\angle 60^\circ$ | brown partly greenish gray | 7 | | |
| | | | | | 9 | | |
| 71.0 | | 71.3m: Qz veinlet. | Fine to coarse grained psamitic schist, Hematisation | reddish gray - greenish gray | 9 | | |
| | | | 72.1-72.4m: Cal-Qz like marble | | 7 | | |
| 73.0 | | 72.3-72.7m: Qz veinlet | | | 9 | | |
| | | 73.6-74.3m: Qz veinlet and vein Ch-Hem veinlet | Coarse grained psamitic schist 73.0-77.1m: Strongly hematisation, Partly showing secreted Qz 73.3-73.5m, 75.1-75.2m, 75.4-75.6m, 75.7-6.0m: Qz network with Chloritisation | brown | 12 | | |
| | | | | | 15 | | |
| | | 75.3-77.0m Cal-Chl veinlet and Qz veinlet (main $\angle 50^\circ$) | | | 19 | | |
| | | | 77.1-79.4m: Partly hematisation | | 15 | | |
| | | | | | 9 | | |
| 79.4 | | | | 78.4-78.6m: Strongly chloritized, Fracture is filled Chlorite | green - reddish gray | 11 | |
| 80 | | | Pelitic schist | Pelitic schist, Weakly hematisation | | | |

| site: MDDH-2 | | Depth (m): 80-120m | | No.3/4 | | | | |
|--------------|--------|---|-----------------|---|--|---------------------------|--------|-----|
| depth (m) | column | Qz vein and Fracture | Lithology | Description | color | Alteration Mineralization | Sample | |
| 80 | | | Pelitic schist | Pelitic schist, Weakly hematisation 79.4-81.1m: Fe-oxide fill micro fracture ($\angle 80^\circ - \angle 60^\circ$) 81.1-81.3m: Qz-Cal-Chl veinlet ($\angle 60^\circ$) | reddish gray | Hematised | 10 | |
| | | | | | | | | 25 |
| 82.8 | | 81.5-82.1m secreted Qz | | | | | 9 | |
| | | 82.2-82.8m 3 Qz veinlet ($\angle 75^\circ$) | | | | | 15 | |
| 83.7 | | 82.8-83.7m Some Qz veinlet ($\angle 45^\circ$) | | Fine to medium grained psamitic schist, Weakly hematisation | | | 7 | |
| | | | | Course grained psamitic schist, 83.7-85.3m: Strongly hematisation 83.7-84.2m: Fe-oxide stain concordant with schistosity | brown | | 11 | |
| | | 85.4-85.8m Qz Nt | | 85.3-85.9m: Weakly hematisation | greenish gray - reddish gray | | 14 | |
| | | 86.5-87.1m Qz Nt | | 85.9-86.5m: Strongly chloritization, with chlorite veinlet filled fracture 86.5-89.5m: Showing green spot (chlorite?) around Qz vein 86.5-87.2m: Weakly hematisation | | | 18 | |
| | | 87.4-87.7m Qz Nt wide: 4cm, 3cm, 5cm | | 87.2-89.5m: Strongly hematisation | brown | | 7 | |
| | | 88.1-89.3m Qz Nt | | | | | 9 | |
| | | 88.6-88.9m Qz Nt | | | | | 12 | |
| | | 89.4-89.5m Qz Nt | | | | | 20 | |
| 90 | | | Psamitic schist | 89.5-92.8m: Weakly hematisation, Showing green spot (chlorite?) around Qz network and Qz-Cal-Chl vein and veinlet | greenish gray - reddish gray | | 20 | |
| | | 90.0-90.9m 20 Qz veinlet (av. 2mm) concordant schistosity | | | 92.8-95.9m Partly fine grained psamitic schist, Hematisation | | | 24 |
| | | 90.9-92.3m Qz Nt | | | 95.9-97.4m Strongly hematisation | brown | | 19 |
| | | 92.5-92.7m Qz-Chl, Cal-Qz vein | | | | | | 353 |
| | | 92.8-93.8m 22 Qz veinlet (av. 2mm) | | | | | | 22 |
| | | 93.8-94.3m Qz Nt | | | 97.4-97.9m Weakly hematisation, including some Cal veinlet | greenish gray - brown | | 15 |
| | | 94.3-94.9m 11 Qz veinlet (av. 1mm) | | | 97.9-100.0m Strongly hematisation 98.0m, 98.4m Sheared rock ($\angle 30^\circ, \angle 40^\circ$) 98.4-100.0m Some Qz network with green spot | | | 61 |
| | | 94.9-95.4m Qz Nt | | | | | | 32 |
| | | 95.4-97.4m Qz veinlet (av. 1mm) and some Qz vein | | | | | | 7 |
| | | 97.8-97.9m Cal veinlet | | | | | | 13 |
| | | 98.4-100.0m some Qz Nt | | | | | | 597 |
| 100 | | | | | | | | 19 |
| | | 100.0-100.9m Qz veinlet (av. 1mm) | | | | | 13 | |
| | | 100.9-101.8m Qz Nt | | | | | 11 | |
| | | 101.8-102.9m marbled Qz | | | | | 9 | |
| | | 102.9-103.6m Qz veinlet concordant with schistosity ($\angle 55^\circ$) | | | | | 31 | |
| | | 103.7-106.8m Qz Nt | | | | | 38 | |
| 108.2 | | | Sheared rock | Brecciated psamitic schist, Qz with Hem and Chl fill | brown - greenish gray | | 34 | |
| 109.0 | | 108.2-109.0m marbled Qz | | | | | | 20 |
| 110 | | | Psamitic schist | Fine grained psamitic schist | reddish gray | | 67 | |
| | | 109.3-111.0m Qz veinlet (mainly $\angle 40^\circ$) | | | Course grained psamitic schist 110.0-113.6m Strongly hematisation around Qz network 110.1m Fracture is filled with Cal-Hem-Chl ($\angle 30^\circ$) 111.0-111.7m, 111.9-112.2m: Showing green spot around Qz network | brown - gray | | 17 |
| | | 111.0-111.7m Qz Nt | | | | | | 33 |
| | | 119.9-111.2m Qz Nt | | | | | | 17 |
| | | 112.6m, 113.0m, 113.5m Qz Nt (wide: <10cm) | | | | | | 5 |
| | | 114.0-116.2m Qz veinlet (mainly $\angle 50^\circ$) | | | | | | 8 |
| | | | | | 113.6-116.1m Hematisation | reddish gray - gray | | 17 |
| | | | | | 116.3-116.6m Sheared rock, Filled Cal-Chl-Qz | | | 5 |
| 116.8 | | | | | | | | 8 |
| | | 117.1-117.2m Fracture filled Cal | | | | | | 9 |
| 119.0 | | | | | | | 390 | |
| 120 | | | | | | | | |

site: MDDH-2

Depth (m): 120-150.10m

No.4/4

| depth (m) | column | Qz vein and Fracture | Lithology | Description | color | Alteration Mineralization | Sample |
|-----------|--------|--|-----------------|---|----------------------|---------------------------|---|
| 120 | | 119.6-121.0m Qz-Cal veinlet filled fracture | Psamitic schist | Course grained psamitic schist, Partly black colored pelitic schist, Hematisation, Partly showing green spot | reddish gray | Hematised | 16 |
| 121.8 | | 121.0-121.8m Qz veinlet ($\angle 60^\circ$) | | 120.0m Qz veinlet with chalcopyrite | | | 13 |
| 122.7 | | 122.2m some Qz veinlet | | Fine grained psamitic schist | greenish gray | Chloritized | 37 |
| | | | | 122.3-122.7m Chloritized | | | 8 |
| | | 122.7-125.7m Cal-Chl-Qz filled fracture and veinlet | Meta volcanics | Meta tuff, Weakly chloritization | dark gray | Pyrite | 11 |
| | | | | 122.7-124.8m Some irregular fracture is filled Cal and Qz | | | 47 |
| 125.7 | | | | 123.6m, 125.7m Cal-Chl veinlet with pyrite | | | 15 |
| | | 125.7-127.5m Cal-Chl-Qz filled fracture | Psamitic schist | Fine grained psamitic schist, Weakly chloritization | gray - greenish gray | Pyrite | 17 |
| | | | | Fracture is filled Cal-Qz-Chl with pyrite | | | 16 |
| 127.5 | | | | Meta tuff, Weakly chloritization | | | 16 |
| | | 128.9-129.3m Qz-Cal filled fracture | Meta volcanics | 128.9-129.3m Fracture is filled Qz-Cal | | | 8 |
| 130 | | | | | | | 19 |
| 130.9 | | 130.9m Some Cal-Chl-Qz veinlet ($<2mm$) | Psamitic schist | Fine grained psamitic schist ($\angle 30^\circ$) | gray | Pyrite | 18 |
| | | | | | | | Trace pyrite dissemination concordant with schistosity and filling micro fracture |
| | | 130.9-133.0m Qz veinlet ($\angle 55^\circ$, 6 veinlet/m) | | | | | 15 |
| 133.5 | | | | | | | 11 |
| | | 133.5-135.0m secreted Qz | Pelitic schist | Pelitic schist, Pyrite dissemination concordant with schistosity and pyrite veinlet, Total amount of pyrite is 1% | | | 11 |
| 135.2 | | | | | dark gray | | 10 |
| | | 135.6-136.7m Qz veinlet (mainly $\angle 45^\circ$, $<1mm$) | | Fine grained psamitic schist ($\angle 55^\circ$), With trace pyrite dissemination | gray | Arsenopyrite & Pyrite | 12 |
| | | 136.5-136.7m secreted Cal-Qz | | | | | 135.6-136.7m Pyrite dissemination and veinlet (1%) |
| 136.7 | | | | Course grained psamitic schist | | | 38 |
| | | 136.7-138.0m Smoky Qz vein | | 136.7-138.0m Smoky Qz vein (wide: 2cm) attend with arsenopyrite and pyrite dissemination | | | 43 |
| 140 | | | | | | | 42 |
| | | 138.0-140.9m Mainly Qz-Cal irregular veinlet | Psamitic schist | 138.0-140.0m Pyrite dissemination | dark gray | Pyrite | 36 |
| | | | | | | | 139.7-140.0m Fine grained psamitic schist, Showing graded bedding |
| | | 141.8m Qz Nt | | 140.0-140.9m Pyrite dissemination (1%), Cal-Chl veinlet with arsenopyrite ($\angle 45^\circ$) | | | 33 |
| | | 141.9-143.9m secreted Qz and Qz veinlet | | 140.9-141.9m Fine grained psamitic schist with arsenopyrite dissemination and filling micro fracture | | | 105 |
| | | | | 141.9-143.9m secreted Qz attend with pyrite ($<1\%$) | | | 50 |
| | | 143.9-148.7m Qz veinlet ($<5mm$) | | 143.9-145.2m Qz veinlet, With trace pyrite dissemination | | | 26 |
| | | | | 145.2-148.0m Qz veinlet and network Qz, With trace pyrite dissemination | | | 25 |
| | | | | 148.0-148.7m Fine grained psamitic schist, Qz veinlet with pyrite | | | 41 |
| 150 | | | | 148.7-150.2m Weakly silicified, Qz-Chl veinlet with pyrite | | | 68 |
| | | 148.7-150.2m secreted Qz and Qz-Chl veinlet | | | | | |
| 160 | | | | | | | |

| site: MDDH-3 | | Depth (m):0-40m | | No.1/4 | | | |
|--------------|--------|-----------------------------|--------------------------------------|---|------------------------------|---------------------------|--------|
| depth (m) | column | Qz vein and Fracture | Lithology | Description | color | Alteration Mineralization | Sample |
| 0 | | | Non Core | Surface soil? | reddish grey | Latentization | 41 |
| 2.00 | | | Soft Carapace | Hematite surrounded conglomerate | yellowish reddish brown | | 69 |
| 3.30 | | | | | | | 33 |
| | | | Saprolite | Broken core, original rock unknown | light yellowish reddish grey | | 17 |
| | | | | | | | 7 |
| | | | | | | | 11 |
| | | | | | | | 17 |
| | | | | | | | 7 |
| | | | | | | | 15 |
| | | | | | | | 12 |
| 10 | | | | | | | 11 |
| 10.15 | | | Saprolitic Weathered Psamitic Schist | Original rock texture remained saprolitic weathered psamitic schist, fine grained | purplish grey | | 16 |
| | | | | | | | 19 |
| | | | | | | | 13 |
| 14.80 | | | Strongly Weathered Psamitic Schist | | light reddish greenish grey | | 12 |
| | | | | | | | 10 |
| | | | | | | | 31 |
| | | | | | | | 17 |
| | | | | | | | 18 |
| 20 | | | | | | | 10 |
| 20.90 | | | Meta Andesite | 20.90-21.80m: Meta andesite dyke?, medium grain porphyrite | purplish grey | | 136 |
| 21.30 | | 21.30-22.80m: Fracture Zone | | 21.30-22.80m: Broken core, fracture zone, open crack | | | 4190 |
| 21.80 | | | | | | | 44 |
| 22.80 | | | Strongly Weathered Psamitic Schist | 27.75-29.00m: Recrystallized secondary biotite (greenish) | light reddish greenish grey | | 24 |
| | | | | | | | 15 |
| | | | | | | | 18 |
| | | | | | | | 18 |
| | | | | | | | 20 |
| | | | | | | | 15 |
| 30 | | | | | | | 13 |
| 31.00 | | 31.00-32.60m: Fracture Zone | Fracture Zone | 31.00-32.60m: Broken core and clay mineralized (montmorillonite?) | greyish yellow | | 70 |
| 32.60 | | | | | | | 30 |
| 34.00 | | | Psamitic Schist | 37.00-39.50m: Recrystallized secondary biotite (greenish) | light reddish greenish grey | | 31 |
| | | | | | | | 21 |
| | | | | | | | 19 |
| | | | | | | | 12 |
| | | | | | | | 16 |
| | | | | | | | 7 |
| | | | | | | | 4 |
| 40 | | | | | | | 10 |

site: MDDH-3

Depth (m):40-80m

No.2/4

| depth (m) | column | Qz vein and Fracture | Lithology | Description | color | Alteration Mineralization | Sample |
|-----------|--------|--|-----------------|---|-------------------------------|--------------------------------|--------|
| 40 | | | Psamitic Schist | Hematite oxidized psamitic schist | pinkish khaki | Hematite Oxidation | 13 |
| | | | | 8 | | | |
| | | | | 7 | | | |
| | | | | 9 | | | |
| | | 44.80m: $\angle 40^\circ$ Quartz Vein | | 17 | | | |
| | | | | 13 | | | |
| | | 47.30m: $\angle 70^\circ$ Quartz Vein | | 25 | | | |
| | | 48.20m: $\angle 70^\circ$ Quartz Vein | | 8 | | | |
| | | | | 10 | | | |
| | | | | 12 | | | |
| 50 | | | Meta Andesite | 52.10-52.30m: Brecciated fracture including quartz, mica and rock fragments | purplish grey | Hematite Oxidation | 7 |
| | | 52.10-52.30m: Fracture Zone, with a very few Quartz Vein | | 27 | | | |
| | | | | 18 | | | |
| | | | | 12 | | | |
| | | | | 15 | | | |
| | | 56.20-56.40m: $\angle 70^\circ$ Quartz Vein | | 57 | | | |
| | | 57.40m: $\angle 70^\circ$ Quartz Vein | | 10 | | | |
| | | 58.50m: $\angle 60^\circ$ Quartz Vein | | 16 | | | |
| | | 59.70-59.90m: $\angle 0^\circ$ Quartz Vein | | 10 | | | |
| | | 60.50-60.90m: Fracture Zone | | 30 | | | |
| 60 | | | Psamitic Schist | 60.50-60.90m: Fracture zone, broken core with open crack | greenish grey to pinkish grey | Chloritization & Epitotization | 13 |
| | | | | 8 | | | |
| | | 61.05-65.00m: Irregular shaped Quartz Veinlets and Network | 9 | | | | |
| | | | 115 | | | | |
| | | | 9 | | | | |
| | | | 179 | | | | |
| | | | 127 | | | | |
| | | | 13 | | | | |
| | | | 7 | | | | |
| | | | 14 | | | | |
| | | | 4 | | | | |
| | | | 4 | | | | |
| | | | 19 | | | | |
| | | | 13 | | | | |
| | | | <1 | | | | |
| | | | 5 | | | | |
| | | | 4 | | | | |
| | | | 7 | | | | |
| | | | 9 | | | | |
| 80 | | | Greenschist | Fine grained greenschist (fine tuff), partly recrystallized secondary biotite | light green to greenish grey | Hematite Oxidation | 136 |

| site: MDDH-3 | | Depth (m):80-120m | | No.3/4 | | | |
|--------------|--------|--|-----------------|---|------------------------------|--|--------|
| depth (m) | column | Qz vein and Fracture | Lithology | Description | color | Alteration Mineralization | Sample |
| 80 | | | Greenschist | Fine grained greenschist (fine tuff) | light green to greenish grey | Hematite Oxidization | 7 |
| 81.60 | | 83.65m: $\angle 85^\circ$ Epidote and Calcite Vein | | | | | 21 |
| | | 85.00-89.60m: Irregular shaped Quartz Veinlets and Network | Psamitic Schist | Fine to coarse grained psamitic schist, with reverse grading | grey to greenish grey | Pyrite | 8 |
| | | 89.20-89.30m: $\angle 60^\circ$ Quartz and Chlorite Vein | | | | | |
| | | 89.40-92.20m: Irregular shaped Quartz Veinlets and Network | | | | | 39 |
| 90 | | 92.20-93.00m: $\angle 5-20^\circ$ Quartz, Calcite and Epidote Vein | | 91.20-91.50m: recrystallized secondary biotite, concordant with schistosity | | | 127 |
| | | 93.00-93.60m: $\angle 40-70^\circ$ Quartz and Chlorite Vein | | 92.20-93.00m: with epidote, calcite and chlorite vein | | | 26 |
| | | | Meta Andesite | | greenish grey | Quartz, Chlorite and Pyrite vein Chlorite and Calcite | 43 |
| | | 100.55m: $\angle 40^\circ$ Quartz and Chlorite Vein (w=5cm) | | | | | |
| | | | | Meta andesite, with weak schistosity, including recrystallized secondary biotite, concordant with schistosity, completely altered | | | 216 |
| | | | | | | | 85 |
| | | | | | | | 70 |
| | | | | | | | 61 |
| | | | | | | | 30 |
| | | | | | | | 5410 |
| | | | | | | | 233 |
| | | | | | | | 42 |
| | | | | | | | 27 |
| | | | | | | | 83 |
| | | | | | | | 21 |
| | | | | | | | 76 |
| | | | | | | | 48 |
| | | | | | | | 34 |
| | | | | | | | 41 |
| | | | | | | | 33 |
| 105.20 | | 105.20-106.80m: Irregular shaped Quartz Vein and Network | Psamitic Schist | Fine to medium grained psamitic schist, disseminated with film like pyrite | dark grey to black | Pyrite | 28 |
| 106.80 | | | | | | | 76 |
| | | | Meta Andesite | Meta andesite, weakly schistosed, including recrystallized secondary biotite | greenish grey | | 26 |
| | | | | | | | 48 |
| 110 | | | | | | | 200 |
| | | | | | | | 592 |
| 111.00 | | 111.00-113.20m: Irregular shaped Quartz Vein and Network | Pelitic Schist | Very fine grained pelitic schist, disseminated with film like pyrite (0.1%) | dark grey to black | Pyrite | 120 |
| 113.20 | | | | | | | 15 |
| | | | Meta Andesite | Meta andesite, weakly schistosed, including recrystallized secondary biotite | greenish grey | | 26 |
| | | | | | | | 539 |
| 115.40 | | 115.40-116.00m: Film like pyrite dissemination | | | | | 28 |
| | | | Psamitic Schist | Fine to medium grained psamitic schist | dark grey to black | Film like Pyrite | 70 |
| | | | | 115.40-120.90m: Film like pyrite dissemination zone (0.3%) | | | 19 |
| | | | | | | | 11 |
| 120 | | | | | | | 14 |

site: MDDH-3

Depth (m):120-150m

No.4/4

| depth (m) | column | Qz vein and Fracture | Lithology | Description | color | Alteration Mineralization | Sample |
|-----------|--------|---|-----------------|--|--------------------|---------------------------|--------|
| 120 | | | Psamitic Schist | | | | 18 |
| 120.90 | | | Meta Andesite | Meta andesite, weakly schistosed, with recrystallized secondary biotite, concordant with schistosity | | | 13 |
| | | | | | | | 9 |
| | | | | | | | 3 |
| 124.90 | | 124.90-127.00m: Irregular shaped Quartz Vein | Psamitic Schist | Medium grained psamitic schist, with irregular shaped segregated quartz vein | | | 14 |
| | | | | | | | 19 |
| 127.00 | | 127.80-127.90m: $\angle 40^\circ$ Quartz Vein | Meta Andesite | Meta andesite, weakly schistosed, with recrystallized secondary biotite | | | 13 |
| | | | | | | | 11 |
| 128.60 | | | | | grey | | 11 |
| 130 | | 128.60-132.50m: Irregular shaped Quartz Vein | Psamitic Schist | Medium to coarse grained psamitic schist, with recrystallized secondary biotite | | | 122 |
| | | 131.10-131.20m: $\angle 40^\circ$ Quartz Vein | | 128.60-132.50m: irregular shaped quartz vein and network with a very few pyrite | | | 16 |
| | | 131.70-131.90m: $\angle 40^\circ$ Quartz Vein | | | | | 24 |
| | | 134.60-134.80m: $\angle 50^\circ$ Quartz and Pyrite Vein | | | | | 13 |
| | | | | | | | 14 |
| | | | | | | | 25 |
| | | | | | | | 29 |
| | | | | | | | 73 |
| | | | | | | | 67 |
| 138.40 | | 136.10-140.90m: Pyrite Vein and Film Zone with Irregular shaped Quartz Vein | Pelitic Schist | With fine grained pelitic schist | dark grey to black | | 8 |
| 140 | | | | | | | 10 |
| 140.60 | | 140.10-140.30m: Quartz Vein and Chlorite | | | | | 8 |
| | | 141.00-148.00m: Irregular shaped Quartz Vein and Network | Psamitic Schist | Fine to coarse grained psamitic schist, with irregular shaped segregated quartz vein | grey | | 9 |
| | | | | | | | 23 |
| | | | | | | | 33 |
| | | | | | | | 38 |
| | | | | | | | 55 |
| | | 148.30-148.80m: Irregular shaped Quartz Vein and Network | | | | | 43 |
| | | | | | | | 21 |
| | | 149.00-150.00m: Irregular shaped Quartz Vein | | | | | 116 |
| 150 | | | | | | | 658 |

Pyrite mineralization (vein or film)

| site: MDDH-4 | | Depth (m): 0-40m | | No.1/4 | | | |
|--------------|--------|--|--|--|--|--|--------|
| depth (m) | column | Qz vein and Fracture | Lithology | Description | color | Alteration Mineralization | Sample |
| 0 | | | Soft carapace | Soft carapace | yellowish brown | | 65 |
| 1.7 | | 1.7-2.8m some Qz veinlet (1mm) | Weathered psamitic schist | Strongly weathered fine grained psamitic schist, weakly hematisation 1.9m Showing oxide mineral, 2.6-2.8m Oxide mineral dissemination | reddish yellow | ↑ Oxide mineral | 35 |
| 2.8 | | Strongly weathered coarse grained psamitic schist, weakly hematisation 2.8-3.1m Showing yellow spot (origin chlorite?) 2.8-5.2m With oxide mineral dissemination | | 14 | | | |
| | | 5.3-5.7m Qz veinlet (<1mm) | | 5.2-5.4m Chloritized 5.6m Cal-Qz vein attached with coarse grained oxide mineral 6.2-7.3m Showing yellow spot (origin chlorite?), with oxide mineral dissemination | yellowish red | | 27 |
| | | | | | 9 | | |
| 8.2 | | | Psamitic schist | Fine grained psamitic schist, weakly hematisation | pinkish yellow - light gray | ↑ Chloritized ↑ Oxide mineral ↑ Chloritized ↑ Oxide mineral ↑ Chloritized ↑ Oxide mineral ↑ Chloritized ↑ Oxide mineral ↑ Chloritized ↑ Oxide mineral ↑ Chloritized ↑ Oxide mineral ↑ Chloritized ↑ Oxide mineral | 11 |
| | | 9.1-12.0m Qz vein and veinlet | | 9.1-11.6m oxide mineral attach with and oxide mineral dissemination around with quartz vein | | | 1584 |
| 10 | | | | 12.0-12.2m Coarse grained oxide mineral attach with Cal-Qz vein 12.6-13.1m Showing chloritized spot, with oxide mineral dissemination | yellowish red partly greenish gray | | 13 |
| | | 12.0-12.2m Cal-Qz vein and veinlet | | 14.1-14.3m, 14.6-15.0m, 15.1-15.3m Oxide mineral dissemination around with quartz veinlet and network | pinkish gray | | 7 |
| | | 13.2-13.8m Qz Nt and Qz vein | | 15.2-15.9m Strong oxide mineral dissemination, showing chloritized spot | | | 10 |
| | | 14.1-15.3m irregular shaped Qz veinlet and Qz Nt | | 17.5-19.8m Showing chloritized spot and oxide mineral dissemination around with quartz vein and network | greenish gray - pinkish gray | | 57 |
| | | 15.6-15.7m 5 Qz veins (10mm, $\angle 50-60^\circ$) | | 19.8-20.7m Strongly chloritized | | | 31 |
| | | 15.9-17.5m Qz veinlet and Nt Qz | | 20.7-29.9m Showing chloritized spot and oxide mineral dissemination around with quartz veinlet | reddish gray - dark violet - greenish gray | | 50 |
| | | 17.5-19.20m some Qz vein (10mm) and Qz Nt | | 24.7-26.7m Strongly chloritized, With a trace of fine grained oxide mineral dissemination | | | 26 |
| 20 | | | | 26.7-28.0m Oxide mineral dissemination around with marbled quartz and calcite | pinkish gray | | 26 |
| | | 22.4-22.8m Qz veinlet (<2mm) | | 29.8-30.9m A trace of fine grained oxide mineral dissemination attach with quartz-calcite veinlet | | | 17 |
| | | 23.9-24.5m irregular shaped Qz-Cal veinlet | | 30.9-33.0m Coarse to medium grained psamitic schist, weakly hematisation showing a large amount of fine to coarse grained oxide mineral attach with hole (calcite?) | reddish gray - greenish gray | | 54 |
| | | 26.7-28.0m marbled Qz-Cal | | 33.7-34.2m Showing secondly biotite (or chloritoid?), <1mm | | | 14 |
| | | 28.4-29.7m some Qz-Cal veinlet and vein | | 35.8-37.3m Showing choritoid, secondly biotite around with quartz-calcite vein | pinkish gray | | 18 |
| | | 29.8-30.9m irregular shaped Qz-Cal veinlet | 37.6-40.4m Showing chloritized spot around with quartz network | 19 | | | |
| 30 | | | | pinkish gray | 6 | | |
| | | 30.9-33.0m secreted Qz | | | 6 | | |
| | | 33.0-33.7m Qz-Cal Nt | | reddish gray - greenish gray | 14 | | |
| | | 33.7-34.2m secreted Qz | | | 18 | | |
| | | 34.2-35.8m Qz veinlet | | pinkish gray | 8 | | |
| | | 35.8-37.3m Qz-Cal veinlet and vein (10mm) | | | 27 | | |
| | | 38.1-33.2m, 39.0-39.1m, 39.8-40.0m Qz Nt | | pinkish gray - greenish gray | 22 | | |
| 40 | | | | | 6 | | |
| | | | | | 3 | | |
| | | | | | <1 | | |
| | | | | | 9 | | |
| | | | | | 16 | | |
| | | | | | 14 | | |
| | | | | | 10 | | |
| | | | | | 17 | | |
| | | | | | 7 | | |
| | | | | | 8 | | |
| | | | | | 23 | | |

| site: MDDH-4 | | Depth (m): 40-80m | | No.2/4 | | | |
|--------------|--------------|---|-----------------|---|-------------------------------|---------------------------|--------|
| depth (m) | column | Qz vein and Fracture | Lithology | Description | color | Alteration Mineralization | Sample |
| 40 | | | | Coarse to medium grained psamitic schist, hematization | reddish gray - yellowish gray | Hematized | 76 |
| | | | | 40.6-42.5m partly brecciated | | | 14 |
| 50 | | 42.8m Qz-Cal vein (15mm, $\angle 40^\circ$) 42.9-44.7m main secreted Qz and minor irregular shaped Qz-Cal veinlet 44.7-46.0m Cal-Qz veinlet and secreted Qz 46.0-47.4m secreted Qz 47.4-48.2m Cal-Qz veinlet and vein ($\angle 55^\circ - 60^\circ$) 48.2-50.2m secreted Qz and some Qz-Cal vein and veinlet 50.2-54.8m secreted Qz and Qz-Cal veinlet 54.9m Qz veinlet ($\angle 54^\circ$) 55.0-57.3m secreted Qz-Cal 57.3-58.7m Cal veinlet and irregular shaped Qz-Cal veinlet 59.4m Cal-Qz vein (50mm) 60.0-61.7m secreted Qz-Cal and Qz-Cal veinlet 62.8-65.4m secreted Qz and irregular shaped Qz-Cal veinlet 65.4-68.6m Cal veinlet and secreted Qz 69.0-70.4m Qz-Cal vein and veinlet and secreted Qz 70.8-70.9m, 71.1m Qz vein (10cm, 1cm) 71.4-73.2m Qz veinlet and Nt 73.2-75.4m irregular shaped Cal-Qz veinlet 75.7-76.4m marbled Cal-Qz 76.4-77.8m Qz-Cal veinlet | Psamitic schist | 42.8m Showing chloritized spot around with Qz-Cal vein | | | 9 |
| | | | | 43.9-44.7m Weakly oxide mineral dissemination | | | 3 |
| | | | | 44.7-46.0m Oxide mineral dissemination around with calcite-quartz veinlet | pinkish gray | | 18 |
| | | | | 46.0-47.4m Weakly oxide mineral dissemination | | | 4 |
| | | | | 47.4-48.2m Showing chloritized spot and oxide dissemination around with calcite-quartz vein and veinlet | | | 7 |
| | | | | 48.2-50.2m weakly chloritization around with Quartz vein (48.6m, 48.65m, 49.4m) | | | 26 |
| | | | | 50.2-52.9m Showing chloritized spot and oxide dissemination | reddish gray - greenish gray | | <1 |
| | | | | 52.9-54.8m Strongly hematization, showing chloritized spot around with Qz-Cal veinlet | light gray - pinkish gray | | 8 |
| | | | | 54.8-56.8m Chloritization | reddish brown | | 30 |
| | | | | 56.8-58.3m Showing chloritized spot | green - reddish brown | | 20 |
| | | | | | reddish gray | | 11 |
| | | | | | reddish brown | | 2 |
| | | | | | reddish gray | | 74 |
| | | | | | reddish gray | | 83 |
| | reddish gray | | 340 | | | | |
| | reddish gray | | 14 | | | | |
| | reddish gray | | 19 | | | | |
| 60 | | | | | | | 14 |
| | | | | | | | 13 |
| | | | | | | | 13 |
| | | | | | | | 9 |
| | | | | | | | 29 |
| | | | | | | | 106 |
| | | | | | | | 16 |
| | | | | | | | 17 |
| | | | | | | | 35 |
| | | | | | | | 17 |
| | | | | | | | 46 |
| | | | | | | | 17 |
| | | | | | | | 17 |
| | | | | | | | 14 |
| | | | | | | | 69 |
| | | | | | | | 11 |
| | | | | | | | 13 |
| | | | | | | | 125 |
| | | | | | | | 19 |
| | | | | | | | 20 |
| 80 | | | | | | | 49 |

| site: MDDH-4 | | Depth (m): 80-120m | | No.3/4 | | | | |
|--------------|--------|--|------------------|---|--|--|----------------|----|
| depth (m) | column | Qz vein and Fracture | Lithology | Description | color | Alteration Mineralization | Sample | |
| 80 | | 80.0-81.9m secreted Qz and irregular shaped Qz-Cal veinlet | Psammitic schist | Fine to coarse grained psammitic schist, weakly chloritized Showing reverse graded bedding | | Chloritized Hemalised Pyrite Carbonatization Chloritization Pyrite & Chalcopyrite Biotite Pyrite Chalcopyrite Arsenopyrite Pyrite Chloritized Pyrite Pyrite | 23 | |
| 81.9 | | 81.9-84.7m Qz veinlet | | Coarse grained psammitic schist including coarse grained quartz, partly fine grained psammitic schist | gray - light gray | | 31 | |
| | | | | 81.9-84.7m A trace of pyrite and chalcopyrite grain attach with quartz veinlet | | | <1 | |
| | | 84.7-87.3m Qz-Cal NT and veinlet | | | | | 3 | |
| | | 85.8-85.9m Qz-Cal vein (wide;10cm) | | | | | 10 | |
| | | 86.7-87.3m Showing secondly biotite | | | black - gray | | <1 | |
| | | 87.3-89.2m irregular shaped Qz-Cal veinlet | | | 87.3-89.2m A trace of pyrite and chalcopyrite grain attach with quartz-calcite veinlet | | | <1 |
| 89.2 | | 89.2-89.9m Cal veinlet | | | Psammitic schist, Strongly carbonatization and chloritization with a trace of pyrite | | greenish white | 3 |
| 90 | | 89.9-92.5m secreted Qz and Qz NT, minor Qz-Cal veinlet | | | Coarse to fine grained psammitic schist | | | 3 |
| 89.9 | | 92.5-94.9m Qz veinlet, secreted Qz and some Qz-Cal vein | | | 89.9-92.5m A trace of pyrite attach with quartz-calcite veinlet | | gray | <1 |
| | | 94.9-96.0m secreted Qz-Cal and some Qz-Cal veinlet | | | Fine grained psammitic schist, partly coarse grained | | | 26 |
| | | 96.0-99.3m Qz-Cal veinlet | | | A trace of pyrite attach with quartz-calcite veinlet | | dark gray | 3 |
| | | 98.2m, 98.6m Cal vein (15mm, 10mm) | | | 98.6-99.3m with pyrite dissemination | | | 6 |
| 99.3 | | 99.3-101.5m Cal veinlet | | | Medium grained psammitic schist | | | 23 |
| 100 | | 101.5-103.5m irregular shaped Cal veinlet | | | 101.5-102.4m pyrite and chalcopyrite dissemination | | gray | 26 |
| | | 103.5-103.7m secreted Cal (wide;15mm) | | | 102.4-102.6m pyrite dissemination concordant with schistosity (<2%) | | | 27 |
| | | 105.0-108.2m Cal veinlet | | | 102.6-103.0m arsenopyrite dissemination | | black | 16 |
| | | 108.2-111.5m main Qz veinlet (∠60°) minor Cal veinlet | | | 103.0-105.0m pyrite dissemination concordant with schistosity (<1%) and pyrite fill micro fracture | | | 25 |
| 110 | | 111.4-112.1m some Qz vein (<25mm) | | 105.0-105.4m pyrite attach with calcite veinlet | dark gray - black | 56 | | |
| | | 113.2-113.6m Qz veinlet (∠52°) | | 105.6-111.5m A trace of pyrite dissemination concordant with schistosity, attach with calcite veinlet and fill micro fracture | | 464 | | |
| | | 115.0-115.5m Qz vein and secreted Qz | | | black - gray | 12 | | |
| | | 116.7-117.1m secreted Qz | | | | 13 | | |
| | | 117.4-120.0m Qz-Cal veinlet concordant with schistosity | | | | 10 | | |
| 120 | | | Meta volcanics | Meta tuff, weakly chloritized | greenish gray | 10 | | |
| | | | Psammitic schist | Fine grained psammitic schist, partly pelitic schist | | 5 | | |
| | | | | 111.9-113.4m A trace of pyrite dissemination concordant with schistosity and attach with calcite veinlet | | 8 | | |
| | | | | 113.4-117.4m Pyrite dissemination around with quartz vein and secreted quartz and pyrite filled micro-fracture | | 4 | | |
| | | | | 117.4-120.0m Pyrite dissemination concordant with schistosity (<1%) | dark gray | 8 | | |
| | | | | | | 8 | | |
| | | | | | | 9 | | |
| | | | | | | 11 | | |
| | | | | | | 342 | | |
| | | | | | | 31 | | |
| | | | | | | 49 | | |
| | | | | | | 25 | | |
| | | | | | | 66 | | |
| | | | | | | 5 | | |

| site: MDDH-4 | | Depth (m): 120-150.10m | | No.4/4 | | | | | | |
|--------------|--------|--|-----------------|---|--|---------------------------|--|-----|----|----|
| depth (m) | column | Qz vein and Fracture | Lithology | Description | color | Alteration Mineralization | Sample | | | |
| 120 | | 120.0-123.2m secreted Qz | Psamitic schist | Fine grained psamitic schist 120.0-122.5m Pyrite dissemination concordant with schistosity | dark gray | Pyrite | 138 | | | |
| | | | | | | | | | 87 | |
| 123.2 | | 122.5-123.2m some Qz-Cal veinlet (∠60-70°, <2mm) | Sheared zone | 122.5-123.2m Pyrite attach with Qz-Cal veinlet | | | | | 4 | |
| 123.7 | | | | Brecciated psamitic schist, filled with calcite and quartz | | | | | 5 | |
| 125.4 | | 123.7-125.4m some Qz vein (<30mm) and Qz veinlet concordant with schistosity | Pelitic schist | Pelitic schist to fine grained psamitic schist Pyrite dissemination concordant with schistosity | | | | | 18 | |
| | | | Psamitic schist | Fine to coarse grained psamitic schist, weakly silicified with graded bedding 125.4-131.5m Showing coarse grained secondly biotite A trace of pyrite dissemination concordant with schistosity, around with quartz vein and fill fracture | | | | | 5 | |
| | | 126.4m, 128.4-128.6m 129.5m, 129.6-129.7m 130.5m Secreted Qz | | | | | | | | 5 |
| 130 | | 129.4-129.9m some Qz vein (wide; <40mm) | | | | | 131.5-133.0m Silicified, showing secondly biotite, with coarse grained pyrite dissemination (1%) | | | 3 |
| | | | | | | | 133.0-134.0m With a trace of pyrite dissemination | | | 57 |
| 134.0 | | 133.0-134.0m Qz vein and veinlet (∠70°) | | | | | | | | 14 |
| | | 134.0-136.2m a lot of Qz vein and veinlet | | | Fine to medium grained psamitic schist, weakly silicified, Showing secondly biotite in the fine grained part 134.0-136.2m pyrite dissemination concordant with schistosity and around with quartz vein and veinlet (2%) | | | 17 | | |
| | | 136.2-138.5m Qz veinlet | | | 136.2-138.5m With a trace of pyrite dissemination | | | 22 | | |
| | | | | | | | | 102 | | |
| 138.5 | | 138.5-139.5m some Qz vein (<50mm) | | Meta volcanics | Meta tuff with pyrite dissemination (2%), coarse grained pyrite attach with quartz vein | black | | 7 | | |
| 139.5 | | | | | | | | 10 | | |
| 140 | | | Psamitic schist | Fine grained psamitic schist with a trace of pyrite dissemination | dark gray | | 47 | | | |
| 141.3 | | | Meta volcanics | Meta tuff, biotite concordant with schistosity | black | | 3 | | | |
| 141.6 | | | Psamitic schist | Fine grained psamitic schist | dark gray | | 21 | | | |
| 142.4 | | 142.7m Qz vein | Meta volcanics | Meta tuff, with coarse grained pyrite dissemination (<2%) | greenish gray | | 66 | | | |
| 142.9 | | | | | | | 35 | | | |
| | | | Psamitic schist | Fine to coarse grained psamitic schist 142.9-144.3m With a trace of pyrite dissemination | dark gray - black | | 31 | | | |
| | | | | 144.3-145.0m Showing biotite spot (<3mm) with pyrite, pyrite dissemination concordant with schistosity | | | 31 | | | |
| | | 145.4-146.2m some Qz veinlet | | 145.0-147.2m With a trace of pyrite dissemination | | | 20 | | | |
| | | | | | | | 4 | | | |
| 147.5 | | | Meta volcanics | Meta tuff with fine grained pyrite dissemination (1%) 147.2-147.4m, 148.3-148.8m Showing secondly biotite | greenish gray - dark brown | | 5 | | | |
| 148.8 | | | Psamitic schist | Fine grained psamitic schist with pyrite dissemination (<1%) Showing biotite spot | black - dark gray | | 6 | | | |
| 150 | | | | | | | 9 | | | |
| | | | | | | | 56 | | | |
| | | | | | | | 15 | | | |
| 150 | | | | | | | 13 | | | |
| 160 | | | | | | | | | | |

| site: MDDH-5 | | Depth (m): 0-40m | | No.1/4 | | | | |
|--------------|--------|---|--|--|--|---------------------------|--------------------------------|----|
| depth (m) | column | Qz vein and Fracture | Lithology | Description | color | Alteration Mineralization | Sample | |
| 0 | | | Hard Carapace | Pebble size broken carapace 1.00-1.30, 1.80-2.30m: Not broken core | dark yellowish reddish brown | Lateritization | 9 | |
| 2.30 | | | Soft Carapace | Broken carapace | | | 16 | |
| 3.00 | | | | | | | 7 | |
| | | | | Saprolite | Very soft, original rock unknown, montmorillonite altered | | light yellowish reddish brown | 9 |
| | | | | | | | | 17 |
| | | | | | | | | <1 |
| | | | | | | | | 8 |
| 7.65 | | | 8.70m: $\angle 90^\circ$ Quartz Vein (w=1mm) | Weathered Schist | Saprolitic weathered fine psamitic schist, with crack ($\angle 40^\circ$) | | pinkish khaki | <1 |
| 8.50 | | | | | | | | 8 |
| 10 | | | | | | | | <1 |
| | | | Strongly Weathered Pelitic Schist | 9.40-11.40m: Hematite film crack, concordant with schistosity, $\angle 45-60^\circ$ | pinkish khaki to light khaki | Hematite Spot | <1 | |
| | | 11.10-11.20m: Fracture with Clay Mineral | | | 10.70m: Hematite film with chlorite, $\angle 60^\circ$ | | | <1 |
| | | 11.90m: $\angle 30^\circ$ Quartz Vein (w=1cm) | | | 11.40-11.50m: Hematite spot, irregularly shaped | | light grey | 23 |
| | | 12.80-12.95m: Fracture with Chlorite | | | 13.30-15.00m: Hematite film crack, concordant with schistosity, $\angle 45-80^\circ$ | | | 14 |
| | | 14.20, 14.80m: $\angle 80^\circ$ Quartz Vein (w=1mm) | | | 15.50m: Small fault with clay (montmorillonite?) | | pinkish khaki | 4 |
| | | 15.80m: $\angle 80^\circ$ Quartz and Hematite Vein (w=1mm) | | | 17.20-17.50m: Chloritization zone | | | 1 |
| | | 17.40, 18.15, 19.12m: $\angle 80^\circ$ Quartz Vein | | | 17.40-17.80, 18.40-18.60m: Broken core (fault?) | | | 38 |
| | | 19.40-19.50, 20.00-21.00m: $\angle 60-80^\circ$ Quartz Veinlets | | | 19.80-20.10m: Strongly chloritized, with irregular chlorite network vein (2mm) | | pinkish greenish grey | 34 |
| 18.80 | | | | | | | | 4 |
| 20 | | | | | | | | 12 |
| | | | Weakly Weathered Pelitic Schist | 21.00-22.00m: $\angle 60-80^\circ$, Quartz vein (w=1mm) | | Chloritization | 102 | |
| | | 23.70m: $\angle 60-80^\circ$ Quartz and Hematite Vein | | | 22.00-23.00m: $\angle 60-80^\circ$, Quartz vein (w=1mm), 5veins/m | | pinkish khaki | 1 |
| | | 25.00-27.00m: Quartz Film | | | 22.70-22.80m: Broken core (fracture?) | | greenish grey | 5 |
| | | 27.40, 28.10m: Quartz Hematite and Chlorite | | | 23.90m: Quartz veinlet (w<1mm), 10veins/10cm | | | 27 |
| | | | | | 24.20, 24.60m: Quartz film (w<1mm), 10veins/10cm | | | 2 |
| | | | | | 27.20-27.45m: Hematite film dominate | | | <1 |
| | | | | | 28.00-28.10m: Hematite film dominate, with quartz and chlorite | | | 6 |
| | | | | | 28.50-28.80m: Hematite, quartz and chlorite film dominate | | | 25 |
| | | | | | 29.00-30.00m: Hematite, quartz and chlorite film or vein dominate | | pinkish brown or greenish grey | 19 |
| | | | | | 29.90-33.70m: Hematite film dominate, $\angle 70-80^\circ$ | | | 11 |
| 30 | | | | | | Chloritization | 54 | |
| | | 31.00m: $\angle 70-80^\circ$ Quartz Vein | | | | | 25 | |
| | | 31.40m: Quartz and Hematite Vein | Pelitic Schist | 32.20-32.60, 32.70-32.90m: Irregular quartz, chlorite and hematite network vein | | | 10 | |
| | | | | | | | 56 | |
| | | 32.00m: $\angle 80^\circ$ Quartz Vein (w=1cm) | | 33.20-33.30, 33.40-33.70, 36.20-36.60m: Irregular quartz and hematite vein, $\angle 60-80^\circ$ | | | 17 | |
| | | | | 33.80, 34.40-34.70m: Irregular quartz and hematite vein, $\angle 70^\circ$ | | | 12 | |
| | | | | 34.15-34.40m: Fine grained psamitic schist | | | 18 | |
| | | | Psamitic Schist | 35.00-35.10, 36.10-36.20, 39.60-39.80m: $\angle 70^\circ$ Fracture with Quartz Vein | | | 15 | |
| | | | | | 35.00-35.10, 36.10-36.20, 39.6-39.8m: Brecciated quartz vein with mica | | pinkish khaki | 14 |
| | | | | | 37.00-39.00m: Quartz network vein zone, 10 zone/m, $\angle 70-80^\circ$ | | | 39 |
| 40 | | 36.80-37.20m: $\angle 80^\circ$ Quartz Vein (w=1cm) | | | | | 12 | |

| site: MDDH-5 | | Depth (m): 40-80m | | No.2/4 | | | | |
|--------------|--------|---|---|--|--------------------------------|---------------------------|--------|----|
| depth (m) | column | Qz vein and Fracture | Lithology | Description | color | Alteration Mineralization | Sample | |
| 40 | | 40.30m: $\angle 85^\circ$ Quartz Vein and Chlorite, with irregular shaped Segregated Quartz | Psamitic Schist | Hematite oxidized pinkish khaki colored, fine to coarse grained psamitic schist, including irregular shaped segregated quartz and sometimes chlorite | pinkish khaki | | 41 | |
| | | | | | | | | 32 |
| 44.60 | | 46.50m: $\angle 80^\circ$ Quartz Vein | | 44.60-45.00m: Hematite film network dominant | greenish grey or pinkish khaki | | 5 | |
| | | 46.65m: Quartz and Chlorite Vein (w=1.5cm) | | 45.50m: Quartz and chlorite vein (w=1cm) | | | 28 | |
| | | 47.20m: Quartz and Hematite Vein (w=1cm) | | 46.80m: irregular shaped Quartz network vein with chlorite, pinkish colored zone, totally hematitization dominate | | | 13 | |
| 50 | | 47.70-47.80m: Quartz Network | | | | | 15 | |
| | | 49.80m: Quartz Veinlet and Pyrite | | | | | 3 | |
| | | 50.50, 51.30, 53.70, 55.40, 55.90-56.20m: $\angle 40^\circ$ Quartz and Chlorite | | | | | 7 | |
| | | | | | | | 9 | |
| | | | | | | | 7 | |
| | | | | | | | 6 | |
| | | | | | | | 43 | |
| | | | | | | | 16 | |
| | | | | | | | 94 | |
| | | | | | | | 12 | |
| | | | | | | | 7 | |
| | | | | | | | 12 | |
| 60 | | 58.40m: irregular shaped Quartz Network | | 56.00-57.00m: Quartz and chlorite vein | | | 5 | |
| | | | | 57.00-58.00m: Quartz vein, with no sulfide | | | 6 | |
| | | | | 58.50-60.60, 61.50-63.60m: With very few Quartz vein, with no sulfide and no hematite | grey | | 65 | |
| 61.00 | | 60.60-61.00m: Quartz Network, with no sulfide | 61.00-62.00m: Coarse grained psamitic schist | | 52 | | | |
| 62.00 | | | 63.00-63.80m: Coarse grained psamitic schist | | 13 | | | |
| | | | | | 7 | | | |
| | | | | | 3 | | | |
| | | | | | 2 | | | |
| | | | | | 22 | | | |
| | | | | | 7 | | | |
| | | | | | 43 | | | |
| 70 | | 69.30m: $\angle 5^\circ$ Quartz Veinlet and Pyrite | 68.00-68.60m: $\angle 5-10^\circ$, Open crack dominated zone, fault or fracture zone? | greenish grey | <1 | | | |
| | | | | | 9 | | | |
| | | | | | 8 | | | |
| | | | | | 10 | | | |
| 72.00 | | 72.80-74.10m: $\angle 60-80^\circ$ Quartz and Hematite Vein | 72.00-80.00m: 10cm ordered alteration of coarse(50%) and fine (50%) psamitic schist, normal grading | reddish greenish grey | 9 | | | |
| | | | | | 13 | | | |
| | | | | | 14 | | | |
| | | | | | 13 | | | |
| | | | | | 4 | | | |
| 78.80 | | 75.40m: $\angle 70^\circ$ Quartz, Chalcopyrite, Pyrite and Chlorite Vein (w=1.5cm) | | grey | 12 | | | |
| | | | | | 12 | | | |
| 78.95 | | 76.20m: $\angle 70^\circ$ Quartz and Chlorite Vein | | | 37 | | | |
| 80 | | 78.20-78.50m: Chlorite, Calcite, Epidote, Quartz Vein (Fracture?) | 78.80-78.95m: meta volcanic, porphyritic texture, strongly chloritized | greenish grey | 13 | | | |
| | | | | grey | 13 | | | |

| site: MDDH-5 | | Depth (m): 80-120m | | No.3/4 | | | |
|--------------|--------|--|--|--|---------------------|---------------------------------|--------|
| depth (m) | column | Qz vein and Fracture | Lithology | Description | color | Alteration Mineralization | Sample |
| 80 | | 83.40-83.50m: $\angle 60^\circ$ Quartz, Chlorite, Pyrite vein | Psamitic Schist | 3-10cm ordered alternation between coarse (50%) and fine (50%) grained psamitic schist, normal grading | grey | Chloritization Pyrite | 50 |
| | | 85.90, 87.00m: $\angle 70-85^\circ$ Quartz, Chlorite vein | Chloritized Zone | Chloritized zone, with secondary biotite and chlorite | light greenish grey | | 19 |
| | | 88.25-88.35m: Quartz, Chlorite, Pyrite vein (w=1.5cm) | Psamitic Schist | 3-10cm ordered alternation between coarse (50%) and fine (50%) grained, normal grading, including irregular shaped segregated quartz | grey | Film like Pyrite Dissemination | 37 |
| | | 88.80m: Quartz, Chlorite, Pyrite, Chalcopyrite, vein (w=0.5cm) | | 86.00-98.90m: Film like pyrite dissemination dominated | | | 13 |
| 90 | | 90.00-91.00m: irregular shaped Quartz, Chlorite, Pyrite vein | | 88.40-88.60m: Quartz veinlet with pyrite, 6 veins/10cm | | | 87 |
| | | 92.00-92.70, 92.80-93.00m: Quartz, Chlorite Network vein | | 89.00-89.25m: Quartz and chlorite veinlet ($\angle 5,70^\circ$) | | | 135 |
| | | 93.20m: irregular shaped Quartz, Chlorite, Pyrite vein | | 89.60-89.80m: Quartz and chlorite vein, irregular shaped | | | 32 |
| | | 95.00, 95.25m: Quartz, Chlorite, Pyrite vein | | 91.00-92.00m: Quartz, chlorite and pyrite vein, with a little chalcopyrite ($\angle 70-80^\circ$) | | | 23 |
| | | 95.80-96.00m: Pyrite disseminated | | 92.00-92.70m: Quartz and chlorite network veinlet, with a little pyrite | | | 31 |
| | | 99.20m: Quartz vein | | 93.20m: irregular shaped quartz, chlorite, pyrite film | | | 17 |
| | | 100.90-101.30m: Quartz vein with mica | | 93.20-98.90m: irregular shaped quartz, chlorite, pyrite film | | | 52 |
| | | 102.40, 103.05, 103.40-103.50m: Quartz vein | | | | | 45 |
| 98.90 | | 103.70-103.90m: Quartz, Pyrite vein | | 24 | | | |
| 100 | | | Quartz porphyry, with porphyritic texture, rounded shaped quartz and plagioclase phenocryst, including 0.5-1.0cm irregular shaped secondary biotite, mafic material completely altered | grey | Quartz and Pyrite | 15 | |
| | | | | light grey | | 21 | |
| | | | | | | 35 | |
| | | | | | | 173 | |
| | | | | | | 32 | |
| | | | | | | 9 | |
| | | | | | | 21 | |
| | | | | | 9 | | |
| | | | | | 13 | | |
| | | | | | 43 | | |
| | | | | | 29 | | |
| | | | | | 16 | | |
| | | | | | 74 | | |
| 109.85 | | | | | | 10 | |
| 110 | | 110.00-110.50, 110.90-113.00m: irregular shaped Quartz vein | Psamitic Schist | Fine grained psamitic schist | grey | Quartz, Pyrite and Arsenopyrite | 134 |
| | | 114.50-114.70, 115.90-123.10m: irregular shaped Quartz vein | | 109.85m: Quartz, pyrite and arsenopyrite mineralization | | | 791 |
| | | | | | | | 1405 |
| | | | | | | | 123 |
| | | | | | | | 70 |
| | | | | | | | 80 |
| | | | | | | | 35 |
| | | | | | | | 22 |
| | | | | | 26 | | |
| | | | | | 24 | | |
| 120 | | | | | | 30 | |

| site: MDDH-5 | | Depth (m): 120-150.10m | | | No.4/4 | | |
|--------------|--------|---|-----------------|--|--------|---------------------------|--------|
| depth (m) | column | Qz vein and Fracture | Lithology | Description | color | Alteration Mineralization | Sample |
| 120 | | 120.00-123.10m: irregular shaped Quartz network vein | Psamitic Schist | Fine to medium grained psamitic schist, margin of quartz porphyry dyke | grey | Pyrite and Arsenopyrite | 11 |
| | | | | | | | 15 |
| | | | | | | | 59 |
| | | | | | | | 20 |
| | | | | | | | 19 |
| | | 125.00-127.00m: $\angle 70-80^\circ$ 4 veinlets/m | | | | | 24 |
| | | 127.00-129.15m: $\angle 60-80^\circ$ Quartz network vein | | | | | 12 |
| | | | | | | | 24 |
| | | | | | | | 21 |
| 130 | | 128.30m: $\angle 60^\circ$ Quartz and Chlorite vein (w=1cm) | | | | | 14 |
| | | 130.65m: $\angle 30^\circ$ Quartz and Chlorite vein (w=2cm) | 15 | | | | |
| | | 131.10-132.20m: $\angle 60-80^\circ$ Quartz network vein | 19 | | | | |
| | | | 21 | | | | |
| | | 132.60-133.00m: $\angle 60-80^\circ$ Quartz network vein | 17 | | | | |
| | | | 17 | | | | |
| | | 133.50-135.80m: $\angle 60-80^\circ$ Quartz network vein | 41 | | | | |
| | | | 36 | | | | |
| 138.50 | | Quartz Porphyry Dyke | 40 | | | | |
| | | Medium grained, upper side boundary ($\angle 40^\circ$) | 115 | | | | |
| 140 | | 137.70-138.50, 138.90-140.50, 138.90-141.50m: Quartz network vein | 42 | | | | |
| | | 141.00, 142.90m: Quartz vein (w=3cm) | 44 | | | | |
| | | | 86 | | | | |
| | | | 43 | | | | |
| 144.00 | | 144.00-147.00m: irregular shaped Quartz vein zone | 60 | | | | |
| | | | 29 | | | | |
| | | | 73 | | | | |
| 147.10 | | 147.10-147.60m: Quartz vein | 28 | | | | |
| 147.70 | | | 162 | | | | |
| | | | 59 | | | | |
| 150 | | | 30 | | | | |
| 150.10 | | | | | | | |
| 160 | | | | | | | |

| site: MDDH-6 | | Depth (m): 0-40m | | No. 1/5 | | | |
|--------------|--------|---|--|--|-----------------------|---------------------------|----------|
| depth (m) | column | Qz vein and Fracture | Lithology | Description | color | Alteration Mineralization | Au (ppb) |
| 0 | | | Laterite | Surface soil (0.0-0.1m) & hard carapace (0.1-1.0m) | reddish brown | Chlorite | 14 |
| | | | | Soft carapace | yellow brown | | 17 |
| | | | | Saprolite | brown-reddish brown | | 25 |
| | | | | | | | 20 |
| | | | | | | | 38 |
| 10 | | 6.88m (2mm) Qtz Vn $\angle 45^\circ$ | Weathered Psammitic Schist | Weathered fine grained psammitic schist | yellow brown | | 6 |
| | | 8.76m (2mm) Qtz Vn $\angle 45^\circ$ | | | | | 5 |
| | | 9.94m (3mm), 10.99m (4mm) Qtz Vn $\angle 54^\circ$ | | | | | 9 |
| | | 11.22m (2mm) Qtz Vn $\angle 70^\circ$ | | | | | 7 |
| | | 12.28m (2mm) Qtz Vn $\angle 60^\circ$ | | | | | <5 |
| | | | | | | 5 | |
| | | | | | | 8 | |
| | | | | | | <5 | |
| | | | | | | 86 | |
| | | | | | | 47 | |
| | | 14.50m (6mm) Qtz Vn $\angle 40^\circ$ | Medium grained psammitic schist, with bio. rich blk. bands | dark green -grey | 23 | | |
| | | | Fine grained psammitic schist with qtz veinlets | red-brown | 190 | | |
| | | 16.00m (2mm) Qtz Vn $\angle 50^\circ$ | | red-brown | 23 | | |
| | | 17.73m (4mm) Qtz Vn $\angle 50^\circ$ | Medium grained psammitic schist with grn spots | red-brown | 17 | | |
| 20 | | | | | | 266 | |
| | | | | | | 293 | |
| | | 20.12m (3mm) Qtz Vn $\angle 52^\circ$ | Medium Grained Psammitic Schist | Fine to medium grained psammitic schist | red-brown | 5 | |
| | | 20.60m (3mm) Qtz Vn $\angle 40^\circ$ | | | dark brown | 5 | |
| | | 21.10m (13mm) Qtz Vn $\angle 33^\circ$ | | | dark grey -dark brown | <5 | |
| | | 23.40m (0.05mm) Sheared zone, 23.50m (3mm) Qtz Vn $\angle 20^\circ$ | | | dark grey -dark brown | <5 | |
| | | | | | dark grey -dark brown | <5 | |
| | | 27.75m (30mm) Qtz Vn $\angle 72^\circ$ | | | dark grey -dark brown | <5 | |
| | | 28.45m (0.05mm) Qtz Vn $\angle 53^\circ$ | | | dark grey -dark brown | <5 | |
| | | 28.57m (0.4mm) Qtz Vn $\angle 90^\circ$ | | | dark grey -dark brown | <5 | |
| | | 28.97m (6mm) Qtz Vn $\angle 85^\circ$ | | | dark grey -dark brown | 137 | |
| | | | | | dark grey -dark brown | <5 | |
| | | | | grey -dark grey -dark brown | <5 | | |
| | | | | | <5 | | |
| | | | | | <5 | | |
| | | | | | <5 | | |
| | | 35.01m (20mm) Qtz Vn $\angle 44^\circ$ | | | <5 | | |
| | | 35.18m (3mm) Qtz Vn $\angle 60^\circ$ | | | 666 | | |
| | | 36.77-37.00m Qtz Net Vn & weak zone, Chloritized, with very fine Py | | | 40 | | |
| 40 | | | | | | 179 | |
| | | | | | | 5 | |

site: MDDH-6

Depth (m): 40-80m



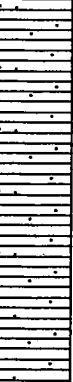

No. 2/5

| depth (m) | column | Qz vein and Fracture | Lithology | Description | color | Alteration Mineralization | Au (ppb) | | | | | | | | | | | |
|--|--|---|---|--|---|---------------------------|--|--|---|------------------|-----------------------|----------|---|--|--|---|-----------------------|---------------------|
| 40 | [dots] | 40.60m (12mm), 40.68m (5mm), 40.78m (10mm), 40.84m (12mm) Qtz Vn $\angle 75-85^\circ$ | Medium Grained Psammitic Schist | 30.83-41.64m; Red bw-red dk bw m.gd psammitic schist | grey -dark grey -dark brown | Hematite | 22 | | | | | | | | | | | |
| | | | | 41.64-43.92m; Dk bw-dk grey v.f.gd psammitic schist | | | 66 | | | | | | | | | | | |
| 50 | [horizontal lines] | 45.03-45.08m, Hmt-Qtz Net Vn $\angle 56^\circ$ 45.75-46.07m, Qtz Net Vn, 46.90m (20mm), 46.98m (10mm), Hmt Clay-Qtz Vn 49.70m (10mm), Qtz Vn, 50.12-50.18m, 50.37-50.60m, Qtz Net Vn, 51.39m (6mm), 51.69m (5mm), 52.00 (4mm), 52.42 (8mm), 52.61 (4mm), Hmt Qtz Vt $\angle 55-76^\circ$ | Alteration of Dark Grey Fine Grained Psammitic Schist & Mudy Schist | Mudy schist | brownish grey -brownish dark grey | Chlorite | 43.92 | | | | | | | | | | | |
| | | | | 52.26 | | | Fine grained psammitic schist | 26 | | | | | | | | | | |
| | | | | 54.76 | | | Mudy schist | 28 | | | | | | | | | | |
| | | | | 59.55m (6mm) Qtz Vt, 60.25m (20mm) Hmt Qtz Vn $\angle 45^\circ$ 62.40m (5mm) Qtz Vt $\angle 60^\circ$ | | | Alteration of drk grey f.gd psammitic schist & mudy schist | dark brown -dark grey | Hematite | 12 | | | | | | | | |
| | | | | 63.00 | | | | | | 19 | | | | | | | | |
| | | | | 60 | | | [horizontal lines] | 64.65m (2mm) Qtz Vt $\angle 71^\circ$ | Alteration of Dark Grey Fine Grained Psammitic Schist & Mudy Schist | Hard mudy schist | brownish dark grey | Hematite | 9 | | | | | |
| | | | | | | | | | | | | | 66.91 | 19 | | | | |
| | | | | | | | | | | | | | 67.20m (2mm) Qtz Vt, 68.48m (7mm) Qtz Vt $\angle 80^\circ$ | Alteration of drk grey f.gd psammitic schist & mudy schist | dark brown -dark grey | Hematite | 5 | |
| | | | | | | | | | | | | | 69.00 | | | | 16 | |
| | | | | | | | | | | | | | 70 | [horizontal lines] | 70.35m (3mm) Hmt Qtz Vt $\angle 57^\circ$ 70.85m (3mm) Hmt Qtz Vt $\angle 82^\circ$ 70.92m (4mm) Hmt Qtz Vt $\angle 70^\circ$ | Alteration of Dark Grey Fine Grained Psammitic Schist & Mudy Schist | M.gd psammitic schist | dark grey -black |
| 73.33 | 6 | | | | | | | | | | | | | | | | | |
| 76.05-76.40m Py diss imp Hm & Qtz Net Vt | Alteration of drk grey f.gd psammitic schist & mudy schist | dark brown -grey | Hematite | | 11 | | | | | | | | | | | | | |
| 76.68 | | | | | 5 | | | | | | | | | | | | | |
| 80 | [dots] | | Alteration of Dark Grey Fine Grained Psammitic Schist & Mudy Schist | Mudy schist | dark grey | Pyrite | 13 | | | | | | | | | | | |
| | | | | | | | 77.00 | 7 | | | | | | | | | | |
| | | | | | | | 78.00 | 8 | | | | | | | | | | |
| | | | | | | | 79.00 | 13 | | | | | | | | | | |
| | | | | | | | 29 | | | | | | | | | | | |
| | | | | | | | 46 | | | | | | | | | | | |
| | | | | | | | 121 | | | | | | | | | | | |
| | | | | | | | 111 | | | | | | | | | | | |
| | | | | | | | 84 | | | | | | | | | | | |
| | | | | | | | 129 | | | | | | | | | | | |

| site: MDDH-6 | | Depth (m): 80-120m | | No. 3/5 | | | | | | | |
|--------------|--------|---|--|--|------------------------------|---------------------------|----------|---|--|--|-----|
| depth (m) | column | Qz vein and Fracture | Lithology | Description | color | Alteration Mineralization | Au (ppb) | | | | |
| 80 | | | Alternation of Dark Grey Fine Grained Psammitic Schist & Mudy Schist | Drk grey f. gd psammitic schist with mudy schist | dark grey-black | Pyrite Silic | 60 | | | | |
| | | | | | | | | | | | 54 |
| | | | | | | | | | | | 52 |
| | | | | | | | | | | | 55 |
| | | | | | | | | | | | 20 |
| | | | | | | | | | | | 107 |
| | | | | | | | | | | | 150 |
| | | | | | | | | | | | 84 |
| | | | | | | | | | | | 84 |
| | | | | | | | | | | | 109 |
| | | | | | | | | | | | 172 |
| | | | | | | | | | | | 49 |
| | | | | | | | | | | | 49 |
| | | | | | | | | | | | 52 |
| | | | | | | | | | | | 33 |
| | | 92.10m (10mm) ∠70°, Py rich (25%), gm clay (chlorite) bearing gg Qtz Vn, | 95.80 | | | | 135 | | | | |
| | | 92.15m (20mm) ∠56°, Py (3-5%), wht-L grey Qtz Vn, | | Quartz porphyry | dark grey | | 19 | | | | |
| | | 92.36m (12mm) ∠60°, Py Net Vn (20%), wht-L grey Qtz V | | | | | | 9 | | | |
| 100 | | | | 100.82 Quartz porphyry | | | 19 | | | | |
| | | | | 106.34 Quartz porphyry | yellow-white | | 86 | | | | |
| | | | | | | | 17 | | | | |
| | | | | | | | <5 | | | | |
| | | | | | | | <5 | | | | |
| | | | | | | | <5 | | | | |
| | | | | | | | <5 | | | | |
| | | | | | | | 48 | | | | |
| | | | | | | | 223 | | | | |
| | | | | | | | 19 | | | | |
| 110 | | | | 109.95 Quartz porphyry | dark grey | | 81 | | | | |
| | | | | | | | 77 | | | | |
| | | Qtz Vt (4-6mm) 8-12 VVm | | Fine to medium grained sandstone | | | 111 | | | | |
| | | | | | | | 224 | | | | |
| | | | | | | | 58 | | | | |
| | | | | | | | 16 | | | | |
| | | | | | dark grey-green dark grey | | 43 | | | | |
| | | | | | | | 56 | | | | |
| | | | | | | | 124 | | | | |
| | | | | | | | 93 | | | | |
| | | | | | | | 66 | | | | |
| 120 | | | | | | | 47 | | | | |

| site: MDDH-6 | | Depth (m): 160-200m | | | No. 5/5 | | |
|--------------|--|---|---|---|--------------------|---------------------------|----------|
| depth (m) | column | Qz vein and Fracture | Lithology | Description | color | Alteration Mineralization | Au (ppb) |
| 160 | XX XX XX XX XX XX XX XX XX XX | 160.06m (0.4mm), ∠26°, gry-L, gm Qtz Vt, Py bearing (5%) 161.85m (17mm), 162.86m (10mm), 163.03-163.35m (32mm), 163.62m (30mm), 163.83-163.94m (11mm), Bio & Py bearig Qtz Vn ∠13-55° | Quartz Porphyry ~ Granodiorite Porphyry | Coarse grained granodiorite porphyry | green-grey | | 20 |
| | | | | | | | 9 |
| | | | | | | | 20 |
| | | | | | | | 9 |
| | | | | | | | 22 |
| | | | | | | | 80 |
| | | | | | | | 54 |
| | | | | | | | 9 |
| | | | | | | | 17 |
| | | | | | | | 170 |
| 43 | | | | | | | |
| 40 | | | | | | | |
| 43 | | | | | | | |
| 27 | | | | | | | |
| 79 | | | | | | | |
| 111 | | | | | | | |
| 47 | | | | | | | |
| 25 | | | | | | | |
| 60 | | | | | | | |
| 180 | | | | Alternation of drk grey f.gd sandstone & .blk mud | grey | | 15 |
| | | | | | | | 19 |
| | | | | | | | 38 |
| | | | | | | | 16 |
| | | | | | | | 34 |
| | | | | | | | 115 |
| | | | | | | | 759 |
| | | | | | | | 58 |
| | | | | | | | 43 |
| | | | | | | | 41 |
| 190 | | 190.34-190.85m ∠62-72° irg | Blk muddy schist | 190.34-190.85m; Quartz vein | blk- dark grey | | 23 |
| | | | | | | | 15 |
| | | | | | | | 13 |
| | | | | | | | 7 |
| | | | | | | | 7 |
| | | | | | | | 14 |
| | | | | | | | 13 |
| | | | | | | | 46 |
| | | | | | | | 16 |
| | | | | | | | 17 |
| 200 | | 198.30 (20mm) ∠75° Qtz Vn | | Fine to medium grained psammitic schist | grey -dark grey | Chlorite | 14 |
| | | | | | | | 14 |
| 200 | | 199.83 (10mm) ∠40° Qtz Vn | | | | | 17 |
| | | | | | | | 14 |

| site: MDDH-7 | | Depth (m): 0-40m | | No. 1/3 | | | | |
|--------------|--------|---|--|--|--|---------------------------|---------------------------------|-----|
| depth (m) | column | Qz vein and Fracture | Lithology | Description | color | Alteration Mineralization | Au (ppb) | |
| 0 | | | Laterite | Hard carapace, soil (0.00-0.10m) | reddish brown | Chlorite | 447 | |
| | | | | Soft carapace | | | 20 | |
| | | | | Saprolite | yellow brown | | 25 | |
| | | | | | | | 26 | |
| | | 5.25m (2mm) ∠30° Hm&Qtz Vt | Weathered Medium to Fine Grained Psamitic Schist | Weathered medium grained psamitic schist | reddish brown | Hematite | 5 | |
| | | Hm spot ∠54° ∠50° ∠37° Qtz Vt (1mm) | | 5.90 | Medium to fine grained psamitic schist with bio.rich blk.bands | | reddish brown -brown | 18 |
| 10 | | 10.0-14.0m; Qtz&Hm Vt ∠45-60° (1-3mm, MAX9mm) | | 7.65 | Fine to medium grained psamitic schist with grn chl spots | | reddish brown -grey dark, brown | 8 |
| | | ∠55° | | 10.75-10.90m; Medium grained psamitic schist with green spots | | | 6 | |
| | | | | 10.90 | Medium to fine grained psamitic schist with bio. rich blk.bands | | reddish brown -yellow brown | 54 |
| | | | | | | | 22 | |
| | | | | 13.80 | Fine grained psamitic schist with parpl dk grn-yellow bw chl spots | | reddish brown -yellow brown | 5 |
| | | | | | | | 27 | |
| | | 16.0m, 16.5m; Qtz&Hm Vt ∠40-58° (1-2mm) | | 15.45 | Very fine grained psamitic schist | | purple dark brown -yellow brown | 17 |
| | | 18.0m Qtz Vt ∠42° (1-3mm) | | | | | purple brown | 32 |
| 20 | | | | 17.85 | Fine grained psamitic schist with dk grn spots | | dark green grey /purple brown | 45 |
| | | | | 18.60 | Fine grained psamitic schist | | purple brown | 49 |
| | | 20.0m Qtz Vt (1-3mm) | | 19.70 | Bio bearing fine grained psamitic schist | | purple brown | 35 |
| | | 21.3m Bio spor | | | 22.45-22.85m; Fine grained psamitic schist with parpl dk bw spots | | purple brown | 23 |
| | | 23.10-23.35m 23.50-23.85m; Qtz&Hm Net | | 22.85 | Fine grained psamitic schist | | purple-orange brown | 5 |
| | | | | | | | | 477 |
| | | | 24.05 | Fine grained psamitic schist with hm(str)stain along schistosity | | 63 | | |
| | | | | | | 154 | | |
| | | | | | | 18 | | |
| | | | | | | 24 | | |
| | | | | | | 4240 | | |
| | | | | | | 186 | | |
| | | | | | | 170 | | |
| | | | | | | 144 | | |
| 30 | | 27.50m, 28.65m, 29.65-30.30m, 30.47m (30mm), 31.90-32.05m, 34.53m (30mm), Qtz&Hm Net ∠33-50° | | | purple-yellow brown | 82 | | |
| | | | | | | 1699 | | |
| | | | | | | 121 | | |
| | | | | | | 57 | | |
| | | | | | | 1607 | | |
| | | | | | | 199 | | |
| | | | | | | 917 | | |
| | | | | | | 20 | | |
| | | | | | | 6 | | |
| | | | | | | 12 | | |
| 40 | | | | | | 47 | | |

| site: MDDH-7 | | Depth (m): 40-80m | | No. 2/3 | | | | |
|--------------|---|--|---|--|--|---------------------------|--------------------------|-----|
| depth (m) | column | Qz vein and Fracture | Lithology | Description | color | Alteration Mineralization | Au (ppb) | |
| 40 |  | | Weathered Medium to Fine Grained Psamitic Schist | Weathered medium grained psamitic schist interbedded with silic(wk) fine grained sandstone | dark grey, yellow brown | Silic | 85 | |
| | | | | | | | | 114 |
| 45.00 | | | | Weathered medium grained psamitic schist | 48.00-48.77m; Silic (m-str), very fine grained psamitic schist | | brown yellow -brown grey | 47 |
| | | | | | | | | 117 |
| 48.77 | | | | | | | | 44 |
| |  | 235° 35-40° | Quartz Porphyry | 48.77-49.85m; yellow bw qtz po, wht pl. prominent | dark grey, black, yellowish brown, dark green, reddish brown | Py and/or Asp | 41 | |
| | | | | | | | 40 | |
| | | | | | | | 9 | |
| | | | | | | | 7 | |
| | | | | | | | 6 | |
| | | | | 30 | | | | |
| | | | | 51 | | | | |
| | | | | 43 | | | | |
| | | | | 14 | | | | |
| | | | | 97 | | | | |
| 59.30 | | Alternation of drk grey v.f.gd psamitic schist & blk. muddy schist Hm stain along schistosity | Alternation of Dark Grey Very Fine Grained Psamitic Schist & Black Muddy Schist | black, grey, yellowish brown | Chlorite | 53 | | |
| | | | | | | 270 | | |
| |  | 65.00m(14mm), 66.70m(20mm), Qtz&Hm Net 270° | Fine to medium grained psamitic schist | | Hematite | 106 | | |
| | | | | | | | 16 | |
| | | | | 36 | | | | |
| | | | | 53 | | | | |
| | | | | 219 | | | | |
| | | | | 444 | | | | |
| | | | | 423 | | | | |
| | | | | 167 | | | | |
| | | | | 110 | | | | |
| | | | | 732 | | | | |
| 70 |  | 69.30m(4-5mm), Qtz with very fine orange spot (Py & El?) 70.52m (13mm), 70.80m (10mm), wht-milky wht Qtz & Cal 72.09-72.25m (16mm), Qtz with Py&Bio 73.40-73.85m QtzNet Vt 74.50m (5mm), 75.75m (14mm) Hm&Qtz, Ser bearing 77.78m (8mm), 78.50m (40mm) Qtz Vn with Bio&Py | Altered diorite-andesite | grey -pale green | Hematite | 34 | | |
| | | | | | | 36 | | |
| | | | | 517 | | | | |
| | | | | 54 | | | | |
| | | | | 55 | | | | |
| | | | | 29 | | | | |
| | | 35 | | | | | | |
| | | 5 | | | | | | |
| | | 7 | | | | | | |
| 80 | | | Altered Diorite -Andesite | dark green -grey | | 5 | | |

site: MDDH-7

Depth (m): 80-100m

No. 3/3

| depth (m) | column | Qz vein and Fracture | Lithology | Description | color | Alteration Mineralization | | Au (ppb) | |
|-----------|--------|---|---------------------------|---|---|---------------------------|----------|-----------------|----|
| | | | | | | Py and/or Asp | Silic | | |
| 80 | | 81.09m(10mm), Lt. gry Qtz Vn Bio>>Py $\angle 50^\circ$ 82.30m(10mm), Lt. gry comp. Qtz Vn $\angle 51^\circ$ 84.05m (10mm), 84.20m (30mm), pale gry Qtz Vn Bio>>Py $\angle 40-50^\circ$ | Altered Diorite -Andesite | Compact diorite-andesite | dark green -grey | | Chlorite | 19 | |
| | | | | | | | | 21 | |
| | | | | | | | | 20 | |
| | | | | | | | | 18 | |
| | | | | | | | | 34 | |
| | | | | | | | | 16 | |
| | | | | | | | | 11 | |
| | | | | | | | | 13 | |
| | | | | | | | | 14 | |
| | | | | | | | | 20 | |
| | | | | | | | | 15 | |
| | | | | | | | | 18 | |
| | | | | | | | | 15 | |
| | | | | | | | | 16 | |
| 90 | | 89.92m, Qtz Vn $\angle 32^\circ$ $\angle 32^\circ$ 91.65m, Qtz Vn $\angle 49^\circ$ 93.95m (10mm), Bio rich wht Qtz Vn $\angle 40^\circ$ 96.22m (10mm), Bio rich gry Qtz Vn $\angle 32^\circ$ | 89.92 | Quartz vein | white -light grey | Py and/or Asp | Silic | 15 | |
| | | | 91.65 | Quartz Vein | white -light grey | | | 18 | |
| | | | 100.00 | Fine to Very Fine Grained Biotite Schist with Laminated Black.Mudy Schist | Fine to very fine grained biotite schist with laminated blk.mudy schist | | | grey -dark grey | 15 |
| | | | | | | | | | 45 |
| 100 | | | | | | | | 56 | |
| | | | | | | | | 27 | |
| | | | | | | | | 23 | |
| | | | | | | | | 17 | |
| 110 | | | | | | | | 18 | |
| 120 | | | | | | | | | |

site: MDDH-8

Depth (m): 40-80m

No. 2/5

| depth (m) | column | Qz vein and Fracture | Lithology | Description | color | Alteration Mineralization | Au (ppb) | | |
|-----------|--------|----------------------|---------------------------|---|-----------------------------|---------------------------|----------|----|----|
| 40 | | | Weathered Psamitic Schist | Fine grained psamitic schist with bio.rich blk.lens | yellow brown -dark brown | Hematite | 5 | | |
| | | | | | | | | 10 | |
| | | | | | 46.00 | | | | 5 |
| | | | | | | | | | 12 |
| | | | | | | | | | 5 |
| | | | | | | | | | 7 |
| | | | | | | | | | 16 |
| | | | | | | | | | 29 |
| 50 | | | | | | | | | 44 |
| | | | | | | | | | 74 |
| | | | | | | 22 | | | |
| | | | | | | 19 | | | |
| | | | | | | 38 | | | |
| | | | | | | 119 | | | |
| | | | | | | 15 | | | |
| | | | | | | 16 | | | |
| | | | | | | 131 | | | |
| | | | | | | 14 | | | |
| | | | | | | 5 | | | |
| 60 | | | | | | 40 | | | |
| | | | | | | 12 | | | |
| | | | | | | 13 | | | |
| | | | | | | 10 | | | |
| | | | | | | 16 | | | |
| | | | | | | 13 | | | |
| | | | | | | 29 | | | |
| | | | | | | 10 | | | |
| | | | | | | 18 | | | |
| | | | | | | 25 | | | |
| 70 | | | | | | 24 | | | |
| | | | | | | 22 | | | |
| | | | | | | 14 | | | |
| | | | | | | 30 | | | |
| | | | | | | 14 | | | |
| | | | | | | 14 | | | |
| | | | | | | 42 | | | |
| | | | | | | 141 | | | |
| | | | | | | 408 | | | |
| | | | | | | 317 | | | |
| 80 | | | | | | 173 | | | |

| site: MDDH-8 | | Depth (m): 80-120m | | No. 3/5 | | | |
|--------------|---------|--|---|--|-----------------|---------------------------|----------|
| depth (m) | column | Qz vein and Fracture | Lithology | Description | color | Alteration Mineralization | Au (ppb) |
| 80 | | 80.00m (40mm) ∠46° Py rich gry Qtz Vn | | Thinly beded alternation of fine to medium grained psamitic schist and blak. pelitic schist with qtz veinlets | | | 39 |
| | x x x x | 80.95-81.35m (4mm) ∠27° milky wht-L.grey ser | | 80.95-81.35m, 86.15-87.00, 90.02-90.15m; M. gd. biotite granodiorite porphyry | grey-dark grey | | 327 |
| | | | | | | | 180 |
| | | | | | | | 57 |
| | | | | | | | 40 |
| | | | | | | | 35 |
| | x x x x | 85.78m (17mm) ∠36° L.grey Qtz Vn | | | | | 13 |
| | x x x x | 86.15-87.00m (8.5mm), irg, yellowish pale gry -gry ser Py Bio | | | | | 35 |
| 90 | | | | | | | 20 |
| | | | | | | | 32 |
| | | 90.02-90.15m grm-pale gry, chloritized, granodiorite porphyry? | 90.15 | Thinly beded alternation of fine to medium grained psamitic schist and blak. pelitic schist with qtz veinlets. | | | 20 |
| | | | | | | | 19 |
| | | | | | | | 27 |
| | | | | | | | 71 |
| | | | | | | | 47 |
| | | | | | | | 40 |
| | | | | | | | 82 |
| | | | | | | | 29 |
| 100 | | | Alternation of Fine to Medium Grained Psamitic Schist | | | | 34 |
| | | | | | | | 33 |
| | | | | | | | 28 |
| | | | | | | | 21 |
| | | | | | | | 28 |
| | | | | | grey-dark grey | | 21 |
| | | | | | | | 22 |
| | | | | | | | 62 |
| | | | | | | | 44 |
| | | | | | | | 32 |
| | | | | | | | 44 |
| 110 | | | | | | | 35 |
| | | | | | | | 46 |
| | | | | | | | 19 |
| | | | | | | | 33 |
| | | | | | | | 43 |
| | | | | | | | 45 |
| | | | | | | | 66 |
| | | | | | | | 85 |
| | | | 117.25 | | | | 40 |
| | x x | | Granodiorite Porphyry | Silic c.gd.Biotite granodiorite porphyry | dark green grey | | 18 |
| 120 | x x | | | | | | 26 |

site: MDDH-8

Depth (m): 120-160m

No. 4/5

| depth (m) | column | Qz vein and Fracture | Lithology | Description | color | Alteration Mineralization | Au (ppb) |
|-----------|--------|--|-----------------------|---|-----------------------|---------------------------|----------|
| 120 | xx | | | Silic c.gd. Biotite granodiorite porphyry | | | 20 |
| | xx | | | | | | 14 |
| | xx | | | | | | 29 |
| | xx | | | 131.25-131.65, 132.08-134.52m; Biotite bearing m.gd. granodiorite porphyry | | | 5 |
| | xx | | | | dark green grey | | 5 |
| | xx | | | | | Py and/or Asp | 5 |
| | xx | | | | | | 12 |
| | xx | | | | | | 30 |
| | xx | | | | | | 8 |
| 130 | xx | | | | | | 5 |
| | xx | | | | | | 15 |
| | xx | | | | | | 18 |
| | xx | | | 132.08 Biotite bearing m.gd. granodiorite porphyry | milky white-pale grey | | 5 |
| | xx | | | | | | 18 |
| | xx | 134.83-135.00m L. grey Qtz Net Vn | | 134.52 Silic Biotite granodiorite porphyry with qtz. veinlets | | | 5 |
| | xx | | Granodiorite Porphyry | | | | 9 |
| | xx | | | | | | 5 |
| | xx | | | | | | 5 |
| 140 | xx | | | | dark green-grey | Silic | 9 |
| | xx | | | | | | 6 |
| | xx | | | | | | 5 |
| | xx | | | | | | 6 |
| | xx | | | | | | 5 |
| | xx | | | 144.45 Biotite bearing m.gd. granodiorite porphyry | | | 7 |
| | xx | | | | | | 21 |
| | xx | | | | | | 59 |
| | xx | | | | white-blue grey | | 68 |
| | xx | | | | | | 14 |
| 150 | xx | | | | | | 52 |
| | xx | | | | | | 29 |
| | xx | | | 151.45 | | | 56 |
| | xx | | | Very fine to fine grained psamitic schist with bio rich seams | | | 110 |
| | xx | | | | | | 125 |
| | xx | | | | | | 20 |
| | xx | | | | | | 8 |
| | xx | 155.08m (140mm) ∠62° Py diss pale gry-gry Qtz Vn | Psamitic Schist | | dark grey-black | Chlorite | 19 |
| | xx | 156.60m (20mm) ∠55° L. grey Qtz Vn | | | | | 17 |
| | xx | | | | | | 45 |
| 160 | xx | | | | | | 103 |

| site: MDDH-8 | | Depth (m): 160-200m | | No. 5/5 | | | |
|---|------------------|---|---|---|------------------|---------------------------|----------|
| depth (m) | column | Qz vein and Fracture | Lithology | Description | color | Alteration Mineralization | Au (ppb) |
| 160 | [Dotted pattern] | 164.50m (12mm) gry Qtz Vn. Bio bearing ∠40-60° | Psamitic Schist | Qtz bearing silic(str) f. grained psamitic schist with bio.rich lens | dark green -grey | Chlorite | 469 |
| | | | | 160.46-161.20m; Silic(str) f. grained psamitic schist with bio. lens | | | 15 |
| | | | | 164.73-164.83m; Silic(str) blk.mud. Bio.rich | | | 161 |
| | | | | 164.83 Fine to medium grained bio.rich psamitic schist | | | 370 |
| | | | | 165.80 Fine grained bio.rich psamitic schist | | | 245 |
| | | | | 165.80 | | | 41 |
| | | | | 165.80 | | | 37 |
| | | | | 165.80 | | | 119 |
| | | | | 165.80 | | | 71 |
| | | | | 165.80 | | | 51 |
| 170 | [Dotted pattern] | 168.95m (20mm) ∠36° . Bio>Py diss imp, pale gry Qtz Vn | Psamitic Schist | 172.23-172.70m; Silic(str) blk.mud. Bio.rich | pale green | Chlorite | 169 |
| | | | | 172.70 Very fine grained psamitic schist | | | 96 |
| | | | | 172.70 | | | 66 |
| | | | | 172.70 | | | 7900 |
| | | | | 172.70 | | | 39 |
| | | | | 172.70 | | | 71 |
| | | | | 172.70 | | | 29 |
| | | | | 172.70 | | | 73 |
| | | | | 172.70 | | | 54 |
| | | | | 172.70 | | | 34 |
| 180 | [Dotted pattern] | 173.73m EL spot bearing | Psamitic Schist | Alternation of drk grey psamitic schist & gm spots bearing f. gd. psamitic schist | dark grey | Py and/or Asp | 73 |
| | | | | 173.73 | | | 54 |
| | | | | 173.73 | | | 34 |
| | | | | 173.73 | | | 41 |
| | | | | 173.73 | | | 39 |
| | | | | 173.73 | | | 127 |
| | | | | 173.73 | | | 870 |
| | | | | 173.73 | | | 66 |
| | | | | 173.73 | | | 43 |
| | | | | 173.73 | | | 55 |
| 190 | [Dotted pattern] | 190.92m (50mm) ∠45° . Py diss imp, wht-gry Qtz Vn | Very Fine to Fine Grained Psamitic Schist | Very fine to fine grained psamitic schist with bio rich parts | dark grey-black | Silic | 43 |
| | | | | 185.00 | | | 55 |
| | | | | 185.00 | | | 50 |
| | | | | 185.00 | | | 81 |
| | | | | 185.00 | | | 37 |
| | | | | 185.00 | | | 27 |
| | | | | 185.00 | | | 41 |
| | | | | 185.00 | | | 40 |
| | | | | 185.00 | | | 30 |
| | | | | 185.00 | | | 35 |
| 200 | [Dotted pattern] | 195.60-196.02m (50-100mm) Py diss imp(M), wht Qtz Vn, sand schist brc (30%) bearing | Very Fine to Fine Grained Psamitic Schist | 196.35m (25mm) ∠42° . Py diss imp, pale gm-wht Qtz Vn | dark grey-black | Py and/or Asp | 45 |
| | | | | 196.35 | | | 37 |
| | | | | 196.35 | | | 30 |
| | | | | 196.35 | | | 46 |
| 197.12m (50mm) ∠70° . Py imp, cloudy wht Qtz Vn | | | 48 | | | | |

site: MDDH-9

Depth. (m): 0-40m

No. 1/4

| depth (m) | column | Qz vein and Fracture | Lithology | Description | color | Alteration Mineralization | Au (ppb) | |
|-----------|--------|--|-----------------------|--|--|---------------------------|------------------------------|----|
| 0 | | | Laterite | 0.00-0.35m; Surface soil | dark brown | Hematite | 80 | |
| | | | | 0.35-0.70m; Hard carapace | red brown | | 36 | |
| | | | | 0.70-2.65m; Soft carapace | yellow brown | | 38 | |
| 2.65 | | | | Saprolite | milky white -choco. brown | | 33 | |
| | | | | 4.70 | Saprolite | | red -choco. brown | 29 |
| | | | | 7.70 | | | 29 | |
| | | | | | | | 49 | |
| | | | | | | | 37 | |
| 10 | | | | | 9.00 Weathered medium grained psamitic schist | | milky wht/orange bw/purpl bw | 28 |
| | | | | | 10.80 Weathered fine grained psamitic schist | | yellow brown -grey | 69 |
| | | | | | | 28 | | |
| | | | | 13.30 Weathered fine to medium grained psamitic schist fine Bio imp.(7-8vol.%) | yellow brown -grey | 40 | | |
| | | | | | | 39 | | |
| | | | | | | 129 | | |
| | | | Psamitic Schist | | | | 33 | |
| | | | | | | | 37 | |
| | | 16.00m (20mm), Hm&Qtz Vein (Broken core) | | | | | 39 | |
| | | 17.63m (40mm) Hm&brec Qtz | | | | | 715 | |
| | | 19.12-19.17m, Hm&Qtz Vn ∠34° | | | | | 139 | |
| 20 | | 19.30m (15mm), Hm&brec Qtz Vn ∠36° | | | | | 262 | |
| | | | | | | | 219 | |
| | | | | | | | 357 | |
| | | 23.83m (20mm), Hm, Qtz&Cc Vn | | | | | 2009 | |
| | | | | | | | 542 | |
| | | | | 23.60 Weathered fine grained psamitic schist fine Bio imp.(7-8vol.%) | | 21 | | |
| | | | | | | 227 | | |
| | | | | | | 78 | | |
| | | | | | | 71 | | |
| | | | | | | 134 | | |
| | | | | | | 68 | | |
| | | | | | | 153 | | |
| | | | | | | 51 | | |
| | | | | 32.92 Quartz vein (w=1-3mm) bearing silic (wk) medium grained psamitic schist | dark grey | 50 | | |
| | | | | 33.60 Weathered medium grained psamitic schist fine Bio.imp.(8vol%) | | 62 | | |
| | | | | | | 102 | | |
| | | | | | | 21 | | |
| | | | | 38.50-40.20m; Weathered fine grained psamitic schist with f.gd.Bio bearing | dark brown -dark grey | 29 | | |
| | | | | | | 14 | | |
| | | | Granodiorite Porphyry | | | | 34 | |
| 40 | × × | 38.85m (20-30mm), Blk Bio rich Vt ∠23° | | | Weathered m.gd.biotite granodiorite porphyry with Hm.stain along fault plane | yellow -pale green | 5 | |

| site: MDDH-9 | | Depth (m): 40-80m | | No. 2/4 | | | |
|--------------|--|--|-----------------------|---|----------------------------|---------------------------|----------|
| depth (m) | column | Qz vein and Fracture | Lithology | Description | color | Alteration Mineralization | Au (ppb) |
| 40 | XX XX XX XX XX XX XX XX XX XX | | | Weathered (wk) m. gd. biotite granodiorite porphyry with Hm. stain along fault plane | reddish brown-orange brown | Silic Hematite | 17 |
| | | | | | | | 15 |
| | | | | | | | 29 |
| | | | | | | | 27 |
| | | | | | | | 24 |
| | | | | | | | 12 |
| | | | | | | | 15 |
| | | | | | | | 12 |
| | | | | | | | 11 |
| | | | | | | | 8 |
| 50 | XX XX XX XX XX XX XX XX XX XX | 46.85-47.00m (15mm) Hm rich 48.60-48.65m (5mm) wht Qtz Vn | Granodiorite Porphyry | 44.35 Weathered (wk) m. gd. biotite granodiorite porphyry, epidotization prominate | green-dark grey | | 6 |
| | | | | 46.35 Medium grained biotite granodiorite porphyry Bio rich (30vol.%) | dark grey | | 8 |
| | | | | 48.60 Silic coarse grained biotite granodiorite porphyry Bio (25-30 vol.%) along qtz veinlets | | | 6 |
| | | | | 6 | | | |
| | | | | 8 | | | |
| | | | | 6 | | | |
| | | | | 6 | | | |
| | | | | 9 | | | |
| | | | | 6 | | | |
| | | | | 6 | | | |
| 60 | XX XX XX XX XX XX XX XX XX XX | 59.05m (50mm), 59.50m (30mm), 60.33-60.42 (9mm), Bio bearing wht Qtz Vn ∠28-50° | Granodiorite Porphyry | | | | 7 |
| | | | | 35 | | | |
| | | | | 10 | | | |
| | | | | 7 | | | |
| | | | | 8 | | | |
| | | | | 10 | | | |
| | | | | 11 | | | |
| | | | | 29 | | | |
| | | | | 38 | | | |
| | | | | 38 | | | |
| 70 | XX XX XX XX XX XX XX XX XX XX | 64.35-64.58m (23mm), 66.98m (50mm), Bio rich gry Qtz Vn ∠50° | Granodiorite Porphyry | | dark green-dark grey | Py and/or Asp Silic | 6 |
| | | | | 8 | | | |
| | | | | 8 | | | |
| | | | | 8 | | | |
| | | | | 7 | | | |
| | | | | 7 | | | |
| | | | | 7 | | | |
| | | | | 7 | | | |
| | | | | 8 | | | |
| | | | | 5 | | | |
| 80 | XX XX XX XX XX XX | 68.33m (80mm) milky wht-L gry porous Qtz Vn ∠46° 68.82m (50mm) Bio rich cloudy wht Qtz Vn ∠75° 72.58-72.63m (50mm), 73.91m (50mm), Bio rich L.gry Qtz Vn ∠50-80° 75.07m (50mm), cloudy wht Qtz Vn 75.82-75.89m (70mm), 78.81-78.76mm (15mm), Bio rich blk & L.gry Qtz Vn | Granodiorite Porphyry | | | | 11 |
| | | | | 9 | | | |
| | | | | 12 | | | |
| | | | | 11 | | | |
| | | | | 12 | | | |
| | | | | 11 | | | |

| site: MDDH-9 | | Depth (m): 80-120m | | No. 3/4 | | | |
|-----------------------------|--|--|-----------------------|---|--------------------------|------------------------------------|----------|
| depth (m) | column | Qz vein and Fracture | Lithology | Description | color | Alteration Mineralization | Au (ppb) |
| 80 | X | 80.53-80.62m (90mm), 82.00m (18mm), Bio rich gry Qtz Vn ∠32-62° | Granodiorite Porphyry | Silic coarse grained biotite granodiorite porphyry Bio (25-30 vol. %) along qtz veinlets | dark green- dark grey | - | 9 |
| | | | | | | | 12 |
| | | | | | | | 19 |
| | | | | | | | 16 |
| | | | | | | | 11 |
| | | | | | | | 14 |
| | | | | | | | 12 |
| | | | | | | | 43 |
| | | | | | | | 17 |
| | | | | | | | 48 |
| | | | | | | | 42 |
| | | | | | | | 90 |
| Psamitic Schist 91.97 | Fine grained silic (str) psamitic schist with bio rich seams | dark grey | 58 | | | | |
| Hornblende Diorite 92.30 | Fine grained hornblende diorite with small amount of py (<1 vol %) imp. | dark green-grey-black | 495 | | | | |
| 100 | · | 97.86m (20mm), L. gry Qtz Vn | Psamitic Schist | Fine to medium grained bio.rich silic (str) psamitic schist with py (15 vol.%)=Asp 94.70m; Au spot bearing 97.26m; El observed in the shear fold? zone 100.00-130.00m; parallel laminated alignment of py. & asp. | dark grey | Py and/or Asp Chlorite Silic | 121 |
| | | | | | | | 3704 |
| | | | | | | | 1458 |
| | | | | | | | 980 |
| | | | | | | | 1552 |
| | | | | | | | 564 |
| | | | | | | | 250 |
| | | | | | | | 914 |
| | | | | | | | 256 |
| | | | | | | | 362 |
| | | | | | | | 692 |
| | | | | | | | 328 |
| 94 | | | | | | | |
| 55 | | | | | | | |
| 153 | | | | | | | |
| 159 | | | | | | | |
| 160 | | | | | | | |
| 43 | | | | | | | |
| 240 | | | | | | | |
| 330 | | | | | | | |
| 152 | | | | | | | |
| 88 | | | | | | | |
| 38 | | | | | | | |
| 57 | | | | | | | |
| 41 | | | | | | | |
| 76 | | | | | | | |
| 120 | | 117.80-118.15m whit. Qtz Vt, Net Vt | | | | | 85 |

| site: MDDH-9 | | Depth (m): 120-151.75m | | No. 4/4 | | | |
|--------------|--------|--|-----------------|---|------------------|------------------------------------|--|
| depth (m) | column | Qz vein and Fracture | Lithology | Description | color | Alteration Mineralization | Au (ppb) |
| 120 | | | | Fine to medium grained bio.rich silic (str) psamitic schist with py (15 vol. %) = Asp. 100.00-130.00m; parallel laminated alignment of py. & asp. | dark grey | | 68 189 111 135 80 71 55 310 |
| 130 | | | Psamitic Schist | 128.70 Silic (m) very fine grained psamitic schist with blk.mudy schist | dark grey -black | | 26 53 44 26 29 27 |
| 140 | | 137.36m (40mm), drk gry Qtz Vn Z42° | | 134.43 Fine to medium grained bio.rich silic (m) psamitic schist with blk. mudy schist. | dark grey | Py and/or Asp Chlorite Silic | 25 17 20 42 27 25 |
| 150 | | 142.82m (120mm), Bio rich, chloritized L. gry Qtz Vn Z40° 143.71m (24mm), Py Vt, L. gry Qtz Vn Z40° | | 139.78 Silic (m) very fine grained psamitic schist with blk. mudy schist | dark grey -black | | 32 32 34 45 13 13 12 10 11 |
| 151.75 | | | | | | | 73 11 11 8 |
| 160 | | | | | | | |

site: MDDH-10 Depth (m): 0 - 40m

No. 1/4

| depth (m) | column | Qtzartz vein and Fracture | Lithology | Description | color | Alteration Mineralization | Au (ppb) | | |
|-----------|--------|---|---|---|--------------------------|--|---|----------------------------------|----|
| 0 | | 3.22-(0.02)m Hm + cloudy wht Qtz Vn 3.67-3.95(0.28)m Hm + cloudy wht Qtz Vn 12.00-12.16(0.16)m ∠30° Hm + bw-lt gry c.g. Qtz Vlt Ntwk 12.58-(0.03)m ∠38° Hm + ylw-lt gry c.g. Qtz Vn 13.90-14.00(0.10)m Hm + dk gry c.g. Qtz Vn Ntwk 20.06-20.50(0.44)m Hm(str) + bw-lt gry Qtz Vlt Ntwk zone 36.79-36.85(0.06)m ∠40° 37.81-37.87(0.06)m ∠40° Hm, Chl + gm-lt gry c.g. Qtz Vn 39.05-40.10 (1.05)m many Qtz Vlt (film-7mm) | Weathered Psamitic schist | Fine to medium grained psamitic schist Broken core | reddish brown | Hematite Bio Chlorite Silic Hematite Chlorite Silic Bio Chlorite | 13 | | |
| | | | | | | | | 20 | |
| | | | | | | | | 17 | |
| | | | | | | | | 17 | |
| 4.20 | | | | | | | F.g. psamitic schist with dk grn-dk gy spot. Bio(wk) | reddish brown (dk grn-dk gry) | 23 |
| 5.40 | | | | | | | Fine to medium grained psamitic schist, Pelitic schist bearing | reddish brown (dk brown) | 22 |
| | | | | | | | | | 26 |
| | | | | | | | | | 16 |
| 8.55 | | | | | | | F.g. psamitic schist with dk grn-dk gy spot | reddish brown (dk grn-dk gry) | 22 |
| 9.25 | | | | | | | Medium grained psamitic schist | reddish brown | 16 |
| | | | | | 23 | | | | |
| | | | | | 27 | | | | |
| 11.80 | | | Medium grained psamitic schist with dark green - dark gray spot | reddish brown (dk grn-dk gry) | 89 | | | | |
| | | | | | 124 | | | | |
| | | | | | 88 | | | | |
| | | | | | 68 | | | | |
| | | | | | 63 | | | | |
| 17.44 | | | Medium grained psamitic schist with dark gray spot | reddish brown | 69 | | | | |
| 18.90 | | | Medium grained psamitic schist (porous) Showing many dark green - dark gray spot (chl) around with quartz veinlet | reddish brown (dk grn-dk gry) | 90 | | | | |
| | | | | | 70 | | | | |
| | | | | | 7 | | | | |
| | | | | | 9 | | | | |
| | | | | | 12 | | | | |
| | | | | | 27 | | | | |
| | | | | | 27 | | | | |
| 25.45 | | | Meta andesite | Meta andesite, Bio bearing, Chl | dark green | 407 | | | |
| 26.30 | | | Medium grained psamitic schist | reddish brown - dark brown | 78 | | | | |
| | | | | | 392 | | | | |
| | | | | | 13 | | | | |
| 29.05 | | | Psamitic schist | Very fine grained psamitic schist, partly dark gray pelitic schist | brown - dark brown | 12 | | | |
| | | | | | 9 | | | | |
| | | | | | 9 | | | | |
| 32.85 | | | Medium grained psamitic schist, | dark brown - dark gray | 10 | | | | |
| 33.90 | | | Fine grained psamitic schist, Chloritized Bio patch bearing (cdt schist) | dark brown | 19 | | | | |
| 35.52 | | | Fine to medium grained psamitic schist, Hm (film - 2mm) bearing (cdt schist) | dark brown - dark gray | 9 | | | | |
| | | | | | 9 | | | | |
| | | | | | 40 | | | | |
| | | | | | 56 | | | | |
| | | | | | 17 | | | | |
| 40 | | | | | 8 | | | | |

| site: MDDH-10 | | Depth (m): 40 - 80m | | No. 2/4 | | | | | | |
|---------------|--------|--|----------------------------------|--|---|---------------------------|----------|--|----|----|
| depth (m) | column | Qtzartz vein and Fracture | Lithology | Description | color | Alteration Mineralization | Au (ppb) | | | |
| 40 | | | Psamitic schist 41.35 | | dark brown - dark gray | Silic | 29 | | | |
| | | 41.40-41.66 (0.22) m Hm + lt gly Qtz Vn ntwk 41.75 (22mm) m ∠63° Hm + lt gly Qtz Vn | Pelitic schist / Psamitic schist | Alternated pelitic schist and fine grained psamitic schist (partly very fine grained), | black - dark gray | | 232 | | | |
| | | ∠58° | | | | | 46 | | | |
| | | ∠12° | | | | | 29 | | | |
| | | ∠38° | | | | | 27 | | | |
| | | | | | | | 60 | | | |
| | | | | | | | 29 | | | |
| | | | | | | | 28 | | | |
| 50 | | | | | | | | | | 56 |
| | | ∠45° | | | | | 86 | | | |
| | | 52.00 (18mm) m ∠45° Qtz Vn | | | | | | | 54 | |
| | | | | | | 35 | | | | |
| | | | | | | 28 | | | | |
| | | | | | | 43 | | | | |
| | | | | | | 52 | | | | |
| | | 56.21 (0.09) m Hm + Qtz Vlt (1-10mm) Ntwk | 56.30 | 53.90-54.65m medium grained psamitic schist with dark green spot | reddish brown | Hematite | 78 | | | |
| | | | | | | | 30 | | | |
| | | | | | | | 13 | | | |
| | | | | | | | 20 | | | |
| 60 | | | | | | | 23 | | | |
| | | ∠38° | 59.75 | Fine grained psamitic schist with dark green spot, Qtz Vlt (film - max; 5mm) bearing | reddish brown - dark brown - dark green | | 29 | | | |
| | | ∠30° | 61.37 | Very fine grained psamitic schist (muddy) | dark gray | | 24 | | | |
| | | | | | | | 22 | | | |
| | | ∠45° | | Fine to medium grained psamitic schist, Partly pelitic schist Quartz veinlet bearing (1-8mm, 2-10/m) | dark green - gray (black) | | 40 | | | |
| | | ∠32° | | | | | 28 | | | |
| | | | | | | 22 | | | | |
| | | ∠26° | | | | 16 | | | | |
| | | | | | | 23 | | | | |
| | | | | | | 25 | | | | |
| 70 | | | | | | | 20 | | | |
| | | 69.93 (0.02) m ∠77° lt gm-gry Qtz Vn (Chl) | | | | | 102 | | | |
| | | | | | | | 150 | | | |
| | | | | | | | 978 | | | |
| | | | | | | 22 | | | | |
| | | | | | | 22 | | | | |
| | | | | | | 27 | | | | |
| | | ∠26° | 75.72 | Coarse grained psamitic schist, Bio bearing, Quartz veinlet bearing (1-8mm, many) | gray | Bio | 22 | | | |
| | | ∠41° | | | | | 23 | | | |
| | | 76.54m (24mm) ∠45° 77.84-78.00m | | | | | 21 | | | |
| | | 78.24m (21mm) ∠25° 79.30m (30mm) ∠80° 79.30m (15mm) ∠77° gm-ft gry Qtz Vn (Chl) | 78.26 | Fine to medium grained psamitic schist, Qtz Vlt bearing (1-10mm, many) | dark gray | | 18 | | | |
| 80 | | | | | | | | | | |

site: MDDH-10

Depth (m): 80m - 120m

No. 3/4

| depth (m) | column | Qtz quartz vein and Fracture | Lithology | Description | color | Alteration Mineralization | Au (ppb) |
|-----------|--------|--|----------------------------------|--|--------------------------|--|----------|
| 80 | | 82.16-82.82 (0.66) m dk grn-lt gry Qtz Vlt, Ntwk 83.54-83.73 (0.19) m dk grn-lt gry Qtz Vlt, Ntwk | Psamitic schist 83.73 | Fine to medium grained psamitic schist, Qtz Vlt bearing (1-10mm, many) 82.00-83.7m Qtz Vn and Ntwk with Py and As-Py dissemination (Py >As-Py) | dark gray | Silic & Chlorite ----- Bio ----- Py >As-Py | 19 |
| | | | | Alternated fine to very fine grained psamitic schist and pelitic schist, Bio rich bearing, with Qtz Vlt, Strongly pyrite dissemination (Py>As-Py) | | | 21 |
| | | | | | | | 21 |
| | | | | | | | 25 |
| | | | | | | | 25 |
| | | | | | | | 20 |
| | | | | | | | 23 |
| | | | | | | | 21 |
| | | | | | | | 26 |
| | | | | | | | 31 |
| | | | | | | | 45 |
| | | | | | dark gray - black | | 198 |
| | | | | | | | 25 |
| | | | | | | | 25 |
| | | | | | | | 22 |
| | | | | | | | 24 |
| | | | | | | | 16 |
| | | | | | | | 20 |
| | | | | | | | 96 |
| 100 | | 98.80m (27mm) $\angle 22^\circ$ Pale grn-gry Qtz Vn, $\angle 23^\circ$ | Psamitic schist / Pelitic schist | 98.80m; Qtz Vn; Py Vlt (film - 1mm) bearing | | | 40 |
| | | | | | | | 21 |
| | | | | | | | 15 |
| | | | | | | | 50 |
| | | | | | | | 26 |
| | | | | | | | 46 |
| | | | | | | | 22 |
| | | 105.04m (15m) $\angle 58^\circ$ Whit c.g. Qtz Vlt, with Py diss Bio, Chl | | | | | 31 |
| | | 106.15m (16m) $\angle 22^\circ$ Py diss(wk) imp lt gry c.g. Qtz Vn, $\angle 30^\circ$ | | 106.15m Biotite schist are chloritized around Qtz Vn (2cm), Py (5%)>>As-Py bearing | | | 30 |
| | | | | | | | 45 |
| | | | | | black - dark gray - gray | | 34 |
| | | | | | | | 42 |
| | | | | | | | 31 |
| | | | | | | | 32 |
| | | | | | | | 144 |
| | | | | | | | 37 |
| | | | | | | | 43 |
| | | | | | | | 33 |
| | | | | | | | 33 |
| | | | | | | | 160 |
| 120 | | | | | | | 329 |

| site: MDDH-10 | | Depth (m): 120m - 153.10m | | No. 4/4 | | | |
|---------------|--------|---|----------------------------------|---|--------------------------|----------------------------|----------|
| depth (m) | column | Qtzartz vein and Fracture | Lithology | Description | color | Alteration Mineralization | Au (ppb) |
| 120 | | Py fill fracture (around Qtz Vlt) $\angle 60^\circ$ 123.00m (20mm) $\angle 60^\circ$ lt gry Qtz Vn | Psamitic schist / Pelitic schist | Alternated pelitic schist and very fine to medium grained psamitic schist, Psamitic schist; Bio rich 120m-123m; fracture around Qtz Vlt imply Py dissemination 123.00m Showing Py dissemination in chloritized zone | black - dark gray - gray | Silic Bio Py | 47 |
| | | | | | | | |
| | | $\angle 38^\circ$ | | | | | 64 |
| | | $\angle 58^\circ$ | 129.97 | | | | 35 |
| 130 | | $\angle 65^\circ$ 131.52m (42mm) $\angle 45^\circ$ gm(Chl) - lt gry Qtz Vn, $\angle 65^\circ$ | Psamitic schist | Medium grained psamitic schist, Showing Bio and Chl spot cdt schistosity, and a small amount of chloritoid spot. Pyrite and As-Py diss (Py < As-Py) 131.52m Showing Py diss in Chl zone | dark green - gray | Bio & Chl Py < As-Py | 40 |
| | | | | 133.28 | | | |
| | | 136.35m (10mm) $\angle 55^\circ$ lt gry - lt gm(Chl) Qtz Vn, 136.97m (60mm) $\angle 55^\circ$ gry - dk gm(Chl) Qtz Vn 137.54m (14mm) $\angle 55^\circ$ dk gry Qtz Vlt 138.55m (80mm) $\angle 45^\circ$ gry-dk gry thin banded Qtz Vn 139.12 (15mm) $\angle 45^\circ$ lt gray Qtz Vn wth Chl | | Very fine grained Psamitic schist, Bio rich Partly black colored pelitic schist, Py (2-3%) and As-Py dissm 136.35m; Py < Ar-Py bearing (thin banded) 136.97m; Qtz Vn imply Py << Ar-Py diss. | | Silic Py (2-3%) & As-Py | 23 |
| | | 141.70m (13mm) irg. lt gry - dk gry Qtz Vn 142.02m (15mm) $\angle 60^\circ$ lt gry Qtz Vn, | | 138.55m; Strong Py > As-Py bearing 139.12m; Py diss | dark gray (black) | | |
| 140 | | 146.46m (40mm) $\angle 52^\circ$ Pale gm Chl + lt gry Qtz Vn, 148.03m (80mm) $\angle 50^\circ$ lt gry Qtz Vn, 148.78m (18mm) $\angle 37^\circ$ wht - lt gry Qtz Vn, | | 142.02m; Showing Py dissm around Qtz Vn | | | 113 |
| | | 150.77-151.37m (60cm) wht c.g. Qtz Vlt (Ntwk zone) | | 146.46m; Showing weakly Py diss. in Chl 148.03m; Qtz Vn wit Py and As-Py dissm 148.73m; Black muddy thin banded with Py diss. | | | 130 |
| 150 | | | | 150.77-151.37m Chlorite spot with Py | | | 130 |
| | | | 153.10 | | | | 31 |
| | | | | | | | 47 |
| | | | | | | | 39 |
| | | | | | | | 64 |
| | | | | | | | 35 |
| | | | | | | | 40 |
| | | | | | | | 56 |
| | | | | | | | 23 |
| | | | | | | | 38 |
| | | | | | | | 113 |
| | | | | | | | 130 |
| | | | | | | | 31 |
| | | | | | | | 47 |
| | | | | | | | 39 |
| | | | | | | | 65 |
| | | | | | | | 118 |
| | | | | | | | 63 |
| | | | | | | | 312 |
| | | | | | | | 153 |
| | | | | | | | 98 |
| | | | | | | | 27 |
| | | | | | | | 29 |
| | | | | | | | 55 |
| | | | | | | | 56 |
| | | | | | | | 96 |
| | | | | | | | 238 |
| | | | | | | | 95 |
| | | | | | | | 78 |
| | | | | | | | 125 |
| | | | | | | | 44 |
| | | | | | | | 627 |
| | | | | | | | 115 |
| | | | | | | | 73 |
| | | | | | | | 74 |
| 160 | | | | | | | |

site: MDDH-11

Depth (m): 0-40m

No. 1/4

| depth (m) | column | Qz vein and Fracture | Lithology | Description | color | Alteration Mineralization | Au (ppb) |
|---|--------|--|-----------------------|--|----------------------------|---------------------------|----------|
| 0 | | | Laterite | 0.00-0.70m; Hard carapace, 0.70-1.20m; Soft carapace | reddish brown | Hematite | 41 |
| 1.20 | | | Saprolite | | reddish brown | | 26 |
| 2.20 | | | | Weathered fine grained psamitic schist with yellow bw spots | red brown-yellow brown | | 17 |
| 3.80 | | ∠47° | | Fine to very fine grained schist | red brown-dark brown | | 31 |
| 5.69 | | ∠53° | | Mudy schist with Hm films | dark brown | | 17 |
| 7.12 | | | | Alternation of drk grey v.f. gd psamitic schist & blk mudy schist, Hm stain along schistosity | red brown-dark brown | | 20 |
| 9.68 | | 9.68-9.82m, Hm&L. gry brc Qtz Net Vt | | Mudy schist with Hm films | dark brown | | 19 |
| 10.25 | | ∠56° | | Coarse grained psamitic schist with Hm spots | red brown | | 14 |
| 11.07 | | | Psamitic Schist | Alternation of drk grey v.f.gd mudy psamitic schist & .blk mudy schist with Hm stain along schistosity | dark brown /red brown | | 11 |
| 15.93m (3mm) | | 15.93m (3mm) Hm&L. gry brc Qtz Vn ∠80° | | Fine to very fine grained schist with Hm & clay fill in joint | red brown | | 10 |
| 16.37 | | | | Coarse grained psamitic schist with Bio spots | yellow brown | | 10 |
| 18.60 | | ∠50° | | Fine grained psamitic schist with Hm diss & stain along fractures | dark brown /red brown | | 7 |
| 19.05 | | | | Coarse grained psamitic schist with Hm spots | red brown | | 8 |
| 22.13 | | | | Silic (wk) fine grained psamitic schist with yellow bw -dk grn spots | yellow brown | | 10 |
| 24.24 | | | | Silic (wk) fine to medium grained psamitic schist | dark green grey -red brown | | 339 |
| 30.05 | | 30.50m (30mm) Lens, L. gry Qtz Hm rich, chloritized around Qtz | Silic Psamitic Schist | | | | 19 |
| 33.50m (35mm), 33.90 (20mm), Hm&L. gry Qtz, chloritized ∠50-55° | | | | | | | 16 |
| 39.00m (10-20mm) Hm&L. gry Qtz, chloritized ∠47° | | | | | | | 43 |
| 39.30 (10mm), wht dusty Qtz, ∠50° | | | | | | | 13 |
| | | | | | | | 12 |
| | | | | | | | 13 |
| | | | | | | | 20 |
| | | | | | | | 22 |
| | | | | | | | 19 |
| | | | | | | | 19 |
| | | | | | | | 15 |
| | | | | | | | 33 |
| | | | | | | | 149 |
| | | | | | | | 409 |
| | | | | | | | 21 |
| | | | | | | | 21 |
| | | | | | | | 40 |
| | | | | | | | 13 |

| site: MDDH-11 | | Depth (m): 40-80m | | | No. 2/4 | | |
|---------------|--------|--|--|--|----------------------------------|---------------------------|----------|
| depth (m) | column | Qz vein and Fracture | Lithology | Description | color | Alteration Mineralization | Au (ppb) |
| 40 | . | ∠40° | Psamitic Schist 45.43 | Silic (wk) fine to medium grained psamitic schist with dk grn-yellow spots | dark green grey -red brown | Silic | 11 |
| | | | | | | | 38 |
| 50 | | ∠44° | Pelitic Schist 53.35 | Alternation of drk grey v.f.gd muddy psamitic schist & blk muddy schist Hm stain along schistosity | black- dark grey | Hematite | 13 |
| | | | | | | | 11 |
| | | | | | | | 12 |
| | | | | | | | 18 |
| | | | | | | | 107 |
| | | | | | | | 21 |
| | | | | | | | 22 |
| | | | | | | | 14 |
| | | | | | | | 323 |
| | | | | | | | 162 |
| 60 | X X | 56.15-56.31m (16mm) cloudy wht coarse grained Qtz Vn with gm yellow spot (Chloritised?) ∠26° | Quartz Porphyry -Granodiorite Porphyry 56.31 | Quartz porphyry-granodiorite porphyry 56.15-56.31m; Quartz vein with grn yellow spots | dark grey- green | Chlorite | 21 |
| | | | | | | | 31 |
| | | | | | | | 110 |
| | | | | | | | 25 |
| | | | | | | | 68 |
| | | | | | | | 87 |
| | | | | | | | 35 |
| | | | | | | | 30 |
| | | | | | | | 31 |
| | | | | | | | 28 |
| 70 | | ∠52° | Alternation of Mudy Psamitic Schist and Mudy Schist 76.35 | Alternation of drk grey v.f.gd muddy psamitic schist & .blk muddy schist Hm stain along schistosity 76.25-76.35m; Fine grained psamitic schist Slickenside on the fault plane of footwall | black/grey/ dark grey | Chlorite | 19 |
| | | | | | | | 16 |
| | | | | | | | 220 |
| | | | | | | | 22 |
| | | | | | | | 37 |
| | | | | | | | 21 |
| | | | | | | | 37 |
| | | | | | | | 36 |
| | | | | | | | 26 |
| | | | | | | | 29 |
| 80 | X X | ∠40° | Granodiorite Porphyry 78.50 | Granodiorite porphyry | dark green | Chlorite | 21 |
| | | | | | | | 35 |
| | | | | | | | 22 |
| | | | | | | | 26 |
| 80 | | ∠40° | Alternation of Mudy Psamitic Schist and Mudy Schist 78.50 | Alternation of drk grey m-f.gd muddy psamitic schist & .blk muddy schist wuth Hm stain along schistosity with qtz veinlets swarm | black/grey- dark grey | Chlorite | 28 |
| | | | | | | | 118 |
| | | | | | | | 31 |

site: MDDH-11

Depth (m): 80-120m

No. 3/4

| depth (m) | column | Qz vein and Fracture | Lithology | Description | color | Alteration Mineralization | Au (ppb) | | | | |
|-----------|--------|----------------------|---|---|----------------------|---------------------------|----------|--|--|--|-----|
| 80 | | | Alternation of Mudy Psamitic Schist and Mudy Schist | Alternation of drk grey m-f. gd mudy psamitic schist & .blk mudy schist with Hm stain along schistosity with qtz veinlets swarm | black/grey-dark grey | Hematite Chlorite | 58 | | | | |
| | | | | | | | | | | | 11 |
| | | | | | | | | | | | 9 |
| | | | | | | | | | | | 10 |
| | | | | | | | | | | | 74 |
| | | | | | | | | | | | 12 |
| | | | | | | | | | | | 9 |
| | | | | | | | | | | | 525 |
| | | | | | | | | | | | 9 |
| | | | | | | | | | | | 36 |
| 90 | | | | | | | 14 | | | | |
| | | | | | | | 77 | | | | |
| | | | | | | | 22 | | | | |
| | | | | | | | 15 | | | | |
| | | | | | | | 14 | | | | |
| | | | | | | | 22 | | | | |
| | | | | | | | 41 | | | | |
| | | | | | | | 43 | | | | |
| | | | | | | | 28 | | | | |
| | | | | | | | 79 | | | | |
| 100 | | | | | | | 201 | | | | |
| | | | | | | | 78 | | | | |
| | | | | | | | 111 | | | | |
| | | | | | | | 129 | | | | |
| | | | | | | | 82 | | | | |
| | | | | | | | 93 | | | | |
| | | | | | | | 31 | | | | |
| | | | | | | | 138 | | | | |
| | | | | | | | 45 | | | | |
| | | | | | | | 112 | | | | |
| 110 | | | Quartz Vein | Quartz vein | white-cloudy white | | 21 | | | | |
| | | | | | | | 39 | | | | |
| | | | | | | | 25 | | | | |
| | | | | | | | 39 | | | | |
| | | | | | | | 54 | | | | |
| | | | | | | | 31 | | | | |
| | | | | | | | 41 | | | | |
| | | | | | | | 40 | | | | |
| | | | | | | | 39 | | | | |
| 120 | | | Alternation of Mudy Psamitic Schist & Mudy Schist | Alternation of drk grey m-f.gd mudy psamitic schist & blk mudy schist Hm stain along schistosity with qtz veinlets swarm | grey-dark grey/black | Py and/or Asp Silic | 302 | | | | |

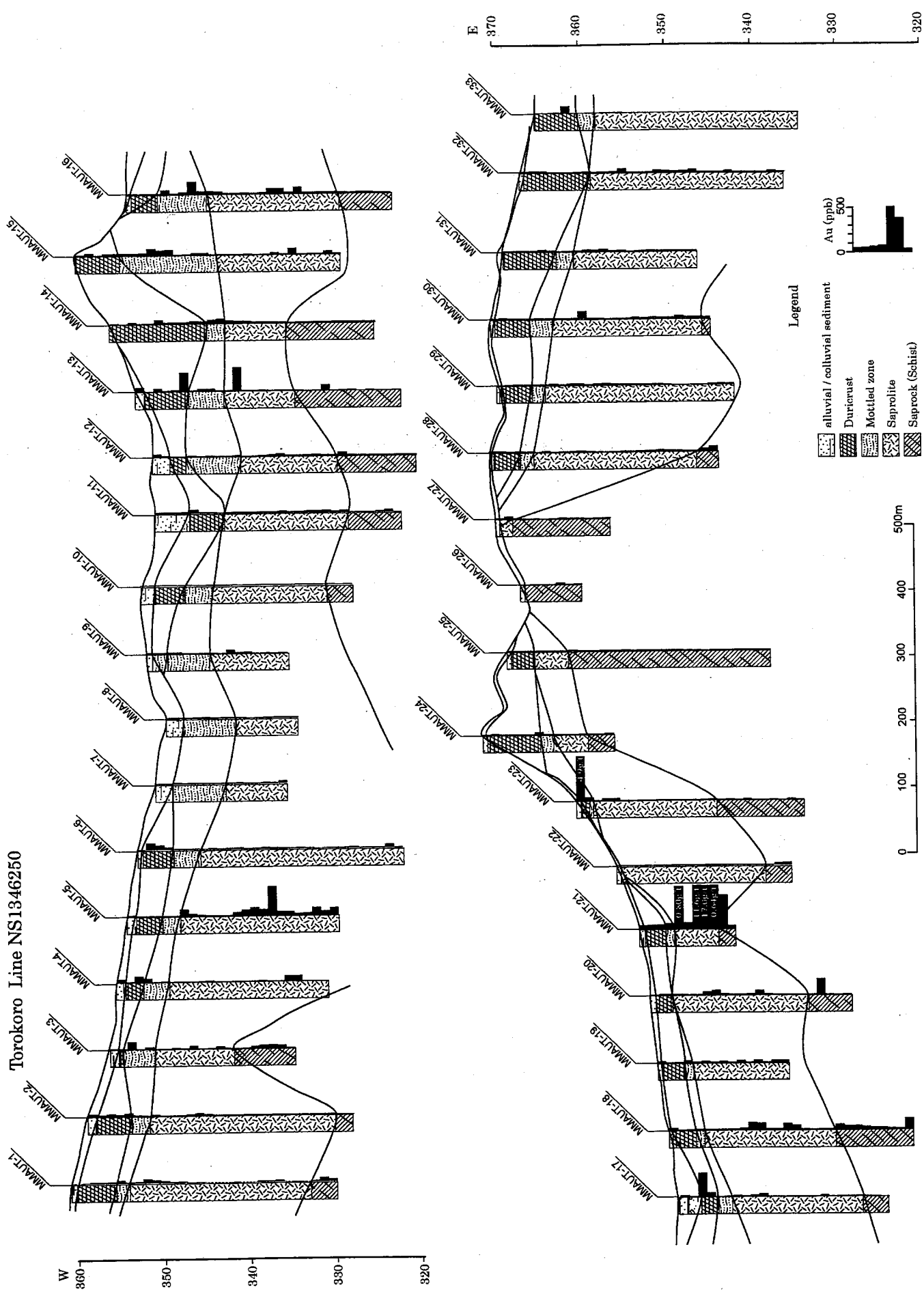
| site: MDDH-11 | | Depth (m): 120-150.00m | | | No. 4/4 | | | | | | |
|---------------|--------|------------------------|---|--|------------------------|------------------------------------|----------|--|--|--|----|
| depth (m) | column | Qz vein and Fracture | Lithology | Description | color | Alteration Mineralization | Au (ppb) | | | | |
| 120 | | | Alternation of Mudy Psamitic Schist & Mudy Schist | Alternation of drk grey m-f.gd mudy psamitic schist & blk mudy schist Hm stain along schistosity with qtz veinlets swarm | grey -dark grey /black | Py and/or Asp Silic Chlorite | 66 | | | | |
| | | | | | | | | | | | 35 |
| | | | | | | | | | | | 17 |
| | | | | | | | | | | | 26 |
| | | | | | | | | | | | 46 |
| | | | | | | | | | | | 27 |
| | | | | | | | | | | | 33 |
| | | | | | | | | | | | 40 |
| | | | | | | | | | | | 27 |
| | | | | | | | | | | | 46 |
| | | | | | | | | | | | 54 |
| | | | | | | | | | | | 27 |
| | | | | | | | | | | | 42 |
| | | | | | | | | | | | 37 |
| | | | | | | | | | | | 30 |
| | | | | | | | 40 | | | | |
| | | | | | | | 42 | | | | |
| | | | | | | | 49 | | | | |
| | | | | | | | 18 | | | | |
| | | | | | | | 19 | | | | |
| 130 | | | | | | | 21 | | | | |
| | | | Altered diorite 140.05 | Altered diorite | dark green | | 15 | | | | |
| | | | Altered diorite 140.85 | | | | 19 | | | | |
| | | | | Silic (wk) fine to medium grained psamitic schist with bio | | | 14 | | | | |
| | | | | | dark grey | | 15 | | | | |
| | | | | | | | 17 | | | | |
| | | | | | | | 15 | | | | |
| | | | | | | | 45 | | | | |
| | | | | | | | 30 | | | | |
| 140 | | | | | | | 36 | | | | |
| | | | | | | | | | | | |
| 150 | | | | | | | | | | | |
| | | | | | | | | | | | |
| 160 | | | | | | | | | | | |

| site: MDDH-12 | | Depth (m): 40-80m | | No. 2/4 | | | |
|---------------|------------------|---|------------------------------------|--|--|---------------------------|----------|
| depth (m) | column | Qz vein and Fracture | Lithology | Description | color | Alteration Mineralization | Au (ppb) |
| 40 | [diagonal lines] | 41.55m (10mm) Hm&cloudy wht dusty Qtz Vn $\angle 65^\circ$ | | Fine to medium grained psamitic schist with dk grn spots | red brown | Chlorite | 5 |
| | | | | | | | 5 |
| 50 | [diagonal lines] | 45.25m (10mm) Hm&dusty coarse grained Qtz Vn $\angle 40^\circ$ | | Fine grained psamitic schist | red brown | Chlorite | 5 |
| | | | | | | | 38 |
| 60 | [diagonal lines] | 48.25m (18mm) Hm(str)&L. gry Qtz Vn $\angle 35^\circ$ | Psamitic Schist | Very fine grained psamitic schist interbeded with thin bk mud | red brown /dark brown -dark grey | Chlorite | 43 |
| | | | | | | | 33 |
| | | | | | | | 30 |
| | | | | | | | 20 |
| | | | | | | | 904 |
| | | | | | | | 138 |
| | | | | | | | 16 |
| | | | | | | | 19 |
| | | | | | | | 26 |
| | | | | | | | 28 |
| 70 | [diagonal lines] | 50.12m (12mm), 51.05m (13mm) Hm&L. gry Qtz Vn $\angle 30-66^\circ$ | Psamitic Schist | Silic coarse grained psamitic schist | red brown | Chlorite | 33 |
| | | | | | | | 33 |
| | | | | | | | 33 |
| | | | | | | | 33 |
| | | | | | | | 33 |
| | | | | | | | 33 |
| | | | | | | | 33 |
| | | | | | | | 33 |
| | | | | | | | 33 |
| | | | | | | | 33 |
| 80 | [diagonal lines] | 53.25m (50mm), 54.02m (26mm) Hm(str)&L. gry Qtz Vn $\angle 55^\circ$ | Psamitic Schist | Very fine grained psamitic schist interbeded with thin bk mud | brown-dark grey | Hematite | 26 |
| | | | | | | | 28 |
| | | | | | | | 33 |
| | | | | | | | 41 |
| | | | | | | | 49 |
| | | | | | | | 18 |
| | | | | | | | 14 |
| | | | | | | | 18 |
| | | | | | | | 28 |
| | | | | | | | 17 |
| 80 | [diagonal lines] | 55.31-55.53m (22mm), Hm&cloudy wht Qtz, with Bio chloritized spot bearing $\angle 34^\circ$ | Psamitic Schist | Fine grained psamitic schist with dk grn spots | red brown -dark brown /black | Chlorite | 16 |
| | | | | | | | 16 |
| | | | | | | | 24 |
| | | | | | | | 13 |
| | | | | | | | 14 |
| | | | | | | | 15 |
| | | | | | | | 36 |
| | | | | | | | 32 |
| | | | | | | | 15 |
| | | | | | | | 21 |
| 80 | [diagonal lines] | 57.40 57.85 59.20 | Psamitic Schist | Very fine grained psamitic schist interbeded with thin bk mud | dark brown | Chlorite | 18 |
| | | | | | | | 14 |
| | | | | | | | 18 |
| | | | | | | | 28 |
| | | | | | | | 17 |
| | | | | | | | 16 |
| | | | | | | | 18 |
| | | | | | | | 20 |
| | | | | | | | 32 |
| | | | | | | | 18 |
| 80 | [diagonal lines] | 65.27m (18mm) Hm(str)&L. gry Qtz Vn, chloritized $\angle 72^\circ$ | Psamitic Schist | Fine grained psamitic schist with dk grn spots | red brown | Chlorite | 23 |
| | | | | | | | 16 |
| | | | | | | | 16 |
| | | | | | | | 24 |
| | | | | | | | 13 |
| | | | | | | | 14 |
| | | | | | | | 15 |
| | | | | | | | 36 |
| | | | | | | | 32 |
| | | | | | | | 15 |
| 80 | [diagonal lines] | 72.54m (15mm) gry Qtz Vn $\angle 42^\circ$ | Psamitic Schist and Pelitic Schist | Thinly beded alternation of coarse to medium grained psamitic schist and pelitic schist with Qtz veinlets swarm interbeded | brown dark grey /dark brown- grey /dark grey -black | Chlorite | 15 |
| | | | | | | | 15 |
| | | | | | | | 15 |
| | | | | | | | 15 |
| | | | | | | | 15 |
| | | | | | | | 15 |
| | | | | | | | 15 |
| | | | | | | | 15 |
| | | | | | | | 15 |
| | | | | | | | 15 |
| 80 | [diagonal lines] | 74.39m (20mm) Hm&gry Qtz Vn, chloritized $\angle 62^\circ$ | Psamitic Schist and Pelitic Schist | Thinly beded alternation of coarse to medium grained psamitic schist and pelitic schist with Qtz veinlets swarm interbeded | brown dark grey /dark brown- grey /dark grey -black | Chlorite | 15 |
| | | | | | | | 15 |
| | | | | | | | 15 |
| | | | | | | | 15 |
| | | | | | | | 15 |
| | | | | | | | 15 |
| | | | | | | | 15 |
| | | | | | | | 15 |
| | | | | | | | 15 |
| | | | | | | | 15 |
| 80 | [diagonal lines] | 79.50m (22mm) Hm&L. gry Qtz Vn, milky wht clay fill in joint chloritized $\angle 54^\circ$ | Psamitic Schist and Pelitic Schist | Thinly beded alternation of coarse to medium grained psamitic schist and pelitic schist with Qtz veinlets swarm interbeded | brown dark grey /dark brown- grey /dark grey -black | Chlorite | 16 |
| | | | | | | | 16 |
| | | | | | | | 16 |
| | | | | | | | 16 |
| | | | | | | | 16 |
| | | | | | | | 16 |
| | | | | | | | 16 |
| | | | | | | | 16 |
| | | | | | | | 16 |
| | | | | | | | 16 |
| 80 | [diagonal lines] | 73.52 | Psamitic Schist and Pelitic Schist | Thinly beded alternation of coarse to medium grained psamitic schist and pelitic schist with Qtz veinlets swarm interbeded | brown dark grey /dark brown- grey /dark grey -black | Chlorite | 20 |
| | | | | | | | 20 |
| | | | | | | | 20 |
| | | | | | | | 20 |
| | | | | | | | 20 |
| | | | | | | | 20 |
| | | | | | | | 20 |
| | | | | | | | 20 |
| | | | | | | | 20 |
| | | | | | | | 20 |

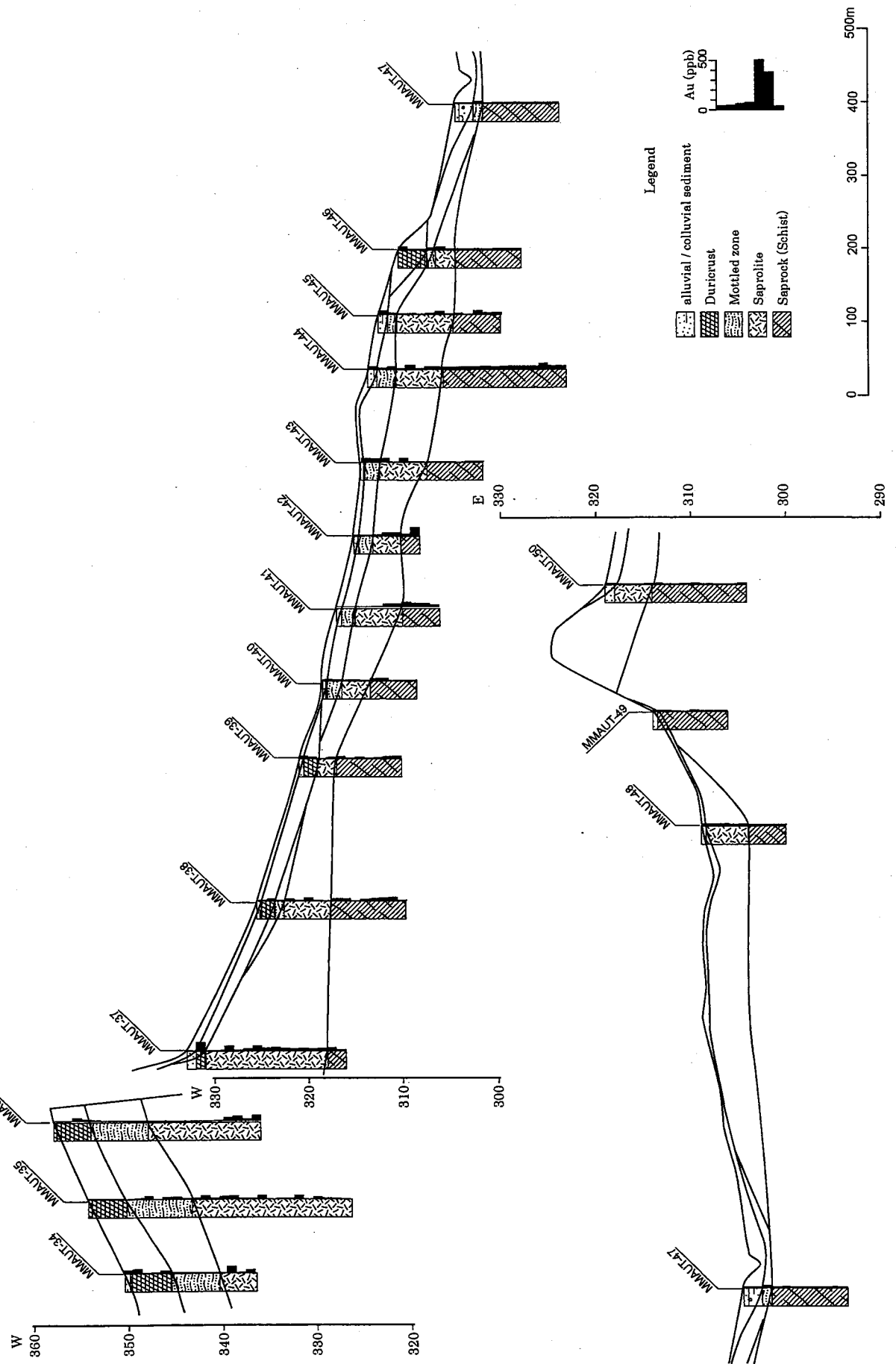
| site: MDDH-12 | | Depth (m): 80-120m | | No. 3/4 | | | | | |
|---------------|--------|---|-----------|---|---|---------------------------|--|------------|----|
| depth (m) | column | Qz vein and Fracture | Lithology | Description | color | Alteration Mineralization | Au (ppb) | | |
| 80 | | | | Thinly bedded alternation of coarse to medium grained psamitic schist and pelitic schist Qtz veinlets swarm interbedded | dark grey-black | Silic | 45 | | |
| | | | 80.90 | Pelitic schist | Blk pelitic schist | | black-dark grey | 213 | |
| 90 | | 86.89m (13mm) Hm&L. gry Qtz Vn $\angle 64^\circ$ 88.17m (12mm) L. gry Qtz Vn $\angle 52^\circ$ | 81.62 | Silic v.f. grained psamitic schist with densely hm.stain | dark brown | Silic | 10 | | |
| | | | 84.44 | Silic Psamitic Schist | V.f. grained psamitic schist with densely hm.stain | | pale green -grey | 61 | |
| | | | 86.83 | | Silic coarse grained psamitic schist with blk. Schist | | dark brown -dark grey | 34 | |
| | | | 89.05 | | | | dark grey | 32 | |
| | | | 90.30 | | Silic (wk) m. grained psamitic schist | | dark brown -dark grey | 40 | |
| | | | 93.00 | | | | | 28 | |
| | | | | | | | | 23 | |
| | | | | | | | | 27 | |
| | | | | | | | | 29 | |
| | | | | | | | | 26 | |
| | | | | 12 | | | | | |
| 100 | | 95.81m (14mm) Hm&L. gry Qtz Vn chloritized $\angle 75^\circ$ 96.59m (12mm), 96.75m (12mm) Hm&L. gry Qtz Vn $\angle 52-78^\circ$ 97.52m (20mm), 100.39m (19mm) pale gm Qtz Vn chloritized $\angle 52-78^\circ$ | | Fine grained psamitic schist Qtz.veinlets swarm | red brown | Hematite | 13 | | |
| | | | 101.45 | Fine Grained Psamitic Schist | | | | | 14 |
| | | | 103.63 | | | | Silic m. grained psamitic schist with Qtz.veinlets swarm | dark grey | 17 |
| | | | | | | | | | 19 |
| | | | | | | | | | 21 |
| | | | | | | | | | 17 |
| | | | | | | | | | 27 |
| | | | | | | | | | 20 |
| | | | | | | | | | 24 |
| | | | | | | | | | 27 |
| | | | | 17 | | | | | |
| 110 | | | | Silic m. grained psamitic schist with muddy v.f.gd psamitic schist. Qtz.veinlets swarm | red brown | Silic | 16 | | |
| | | | 103.63 | Silic Psamitic Schist | | | | | 20 |
| | | | | | | | | | 16 |
| | | | | | | | | | 26 |
| | | | | | | | | | 21 |
| | | | | | | | | | 33 |
| | | | | | | | | | 13 |
| | | | | | | | | | 13 |
| | | | | 22 | | | | | |
| 120 | | 114.43m (8mm), 115.01m (2mm), 115.48m (12mm) Hm&L. gry Qtz Vn partly chloritized $\angle 32-75^\circ$ 117.75m (20mm), 119.29m (12mm) Hm&Qtz Vt | 113.82 | Silic (wk.) fine to medium grained psamitic schist | red brown /dark grey | Silic | 27 | | |
| | | | 116.45 | Silic Psamitic Schist | | | | 24 | |
| | | | | | | | | 24 | |
| | | | | | | | | 221 | |
| | | | | | | | Alternation of blk.hard mud & f.gd.psamitic schist | | 27 |
| | | | | | | | | black/grey | 29 |
| | | | | | 28 | | | | |

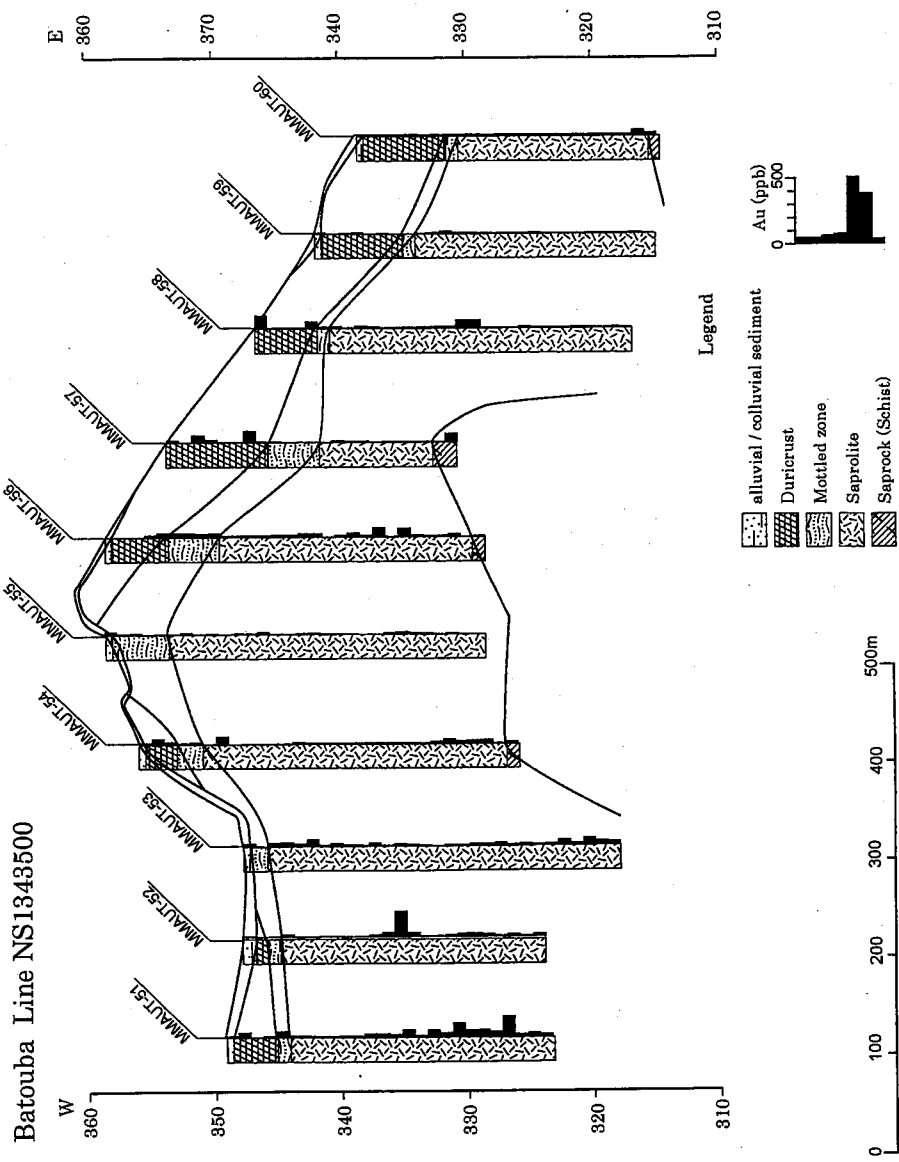
| site: MDDH-12 | | Depth (m): 120-150.00m | | | No. 4/4 | | | |
|---------------|--------|---|---|---|---|---------------------------|----------|-----|
| depth (m) | column | Qz vein and Fracture | Lithology | Description | color | Alteration Mineralization | Au (ppb) | |
| 120 | | 121.68m (50mm) wht Qtz Vn chloritized $\angle 70^\circ$ | Alternation of Mud & Psamitic Schist | Alternation of blk.hard mud & f. gd. psamitic schist | black /dark grey | Py and/or Asp | 29 | |
| | | | | | | | 25 | |
| | | | | | | | 28 | |
| | | | | | | | 28 | |
| | | | | | | | 28 | |
| | | | 29 | | | | | |
| | | | 32 | | | | | |
| | | | 348 | | | | | |
| | | | 26 | | | | | |
| 130 | | | 125.38m (10mm) Py (wk)&L. grey Qtz Vt $\angle 50^\circ$ | Alternation of Mud & Silic Psamitic Schist | Alternation of blk.hard mud & silic (m) f. gd. psamitic schist | black /dark grey | Silic | 20 |
| | | | 127.75-127.82m, 129.17m (14mm) wht-milky wht Qtz, with Cc Net Vt $\angle 50^\circ$ | | | | | 27 |
| | | | | | | | | 144 |
| | | | | | | | | 80 |
| | | | | | | | | 16 |
| | | | | | | | | 893 |
| | | | 7 | | | | | |
| | | | 127 | | | | | |
| | | | 8 | | | | | |
| | | | 12 | | | | | |
| 140 | | | 12 | | | | | |
| | | | 11 | | | | | |
| | | | 90 | | | | | |
| | | | 43 | | | | | |
| | | | 16 | | | | | |
| | | | 14 | | | | | |
| | | | 20 | | | | | |
| | | | 17 | | | | | |
| | | | 14 | | | | | |
| | | | 203 | | | | | |
| 150 | | | 150.00 | | | | 14 | |
| 160 | | | | | | | | |

Torokoro Line NS1346250

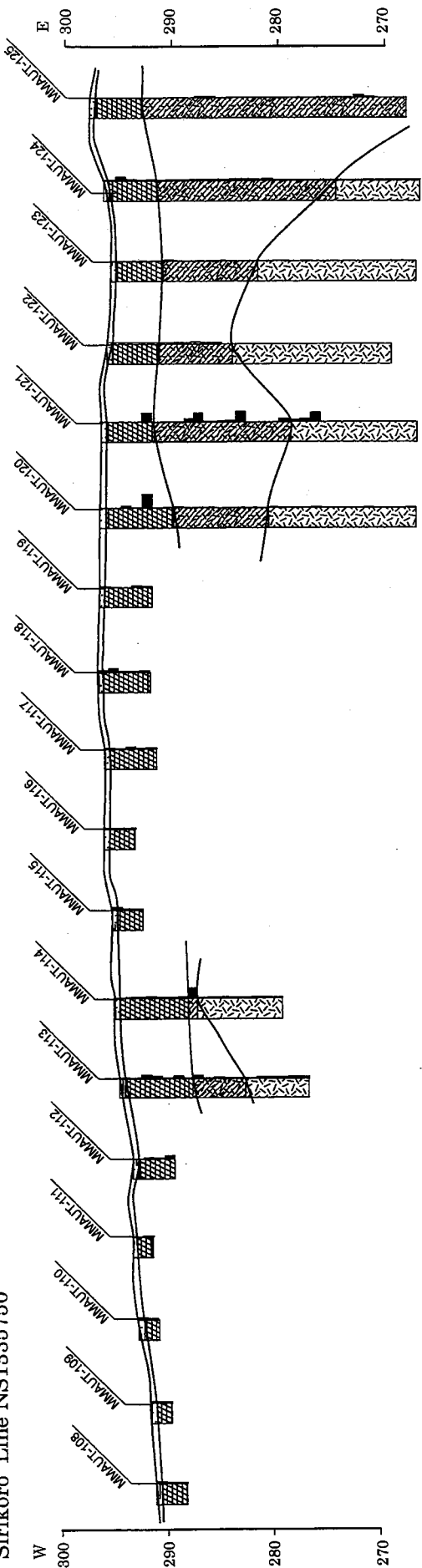


Kalako Line NS1348000





Sirikoro Line NS1385750



Sirikoro Line NS1385250

