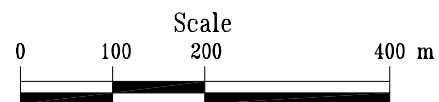


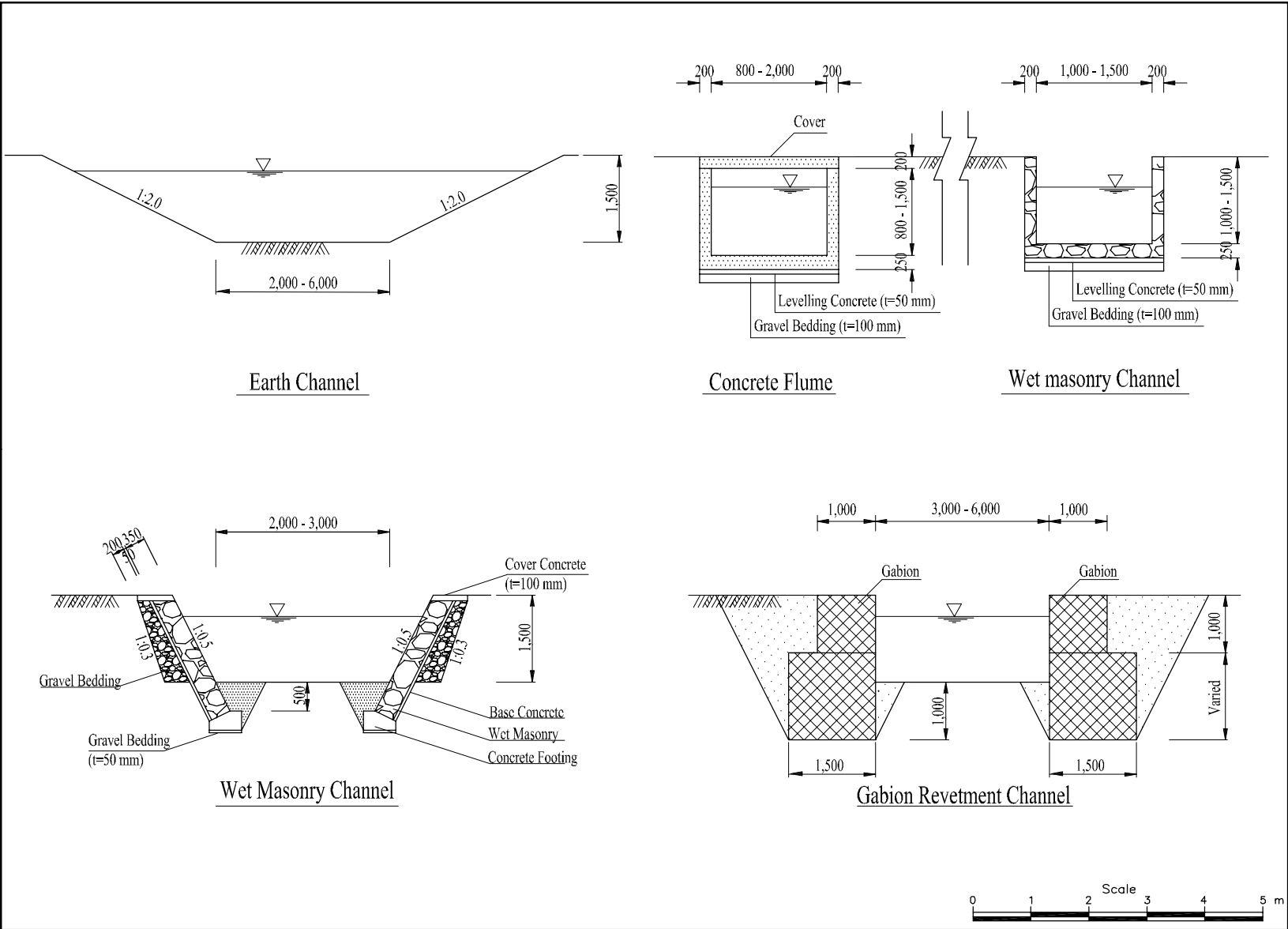


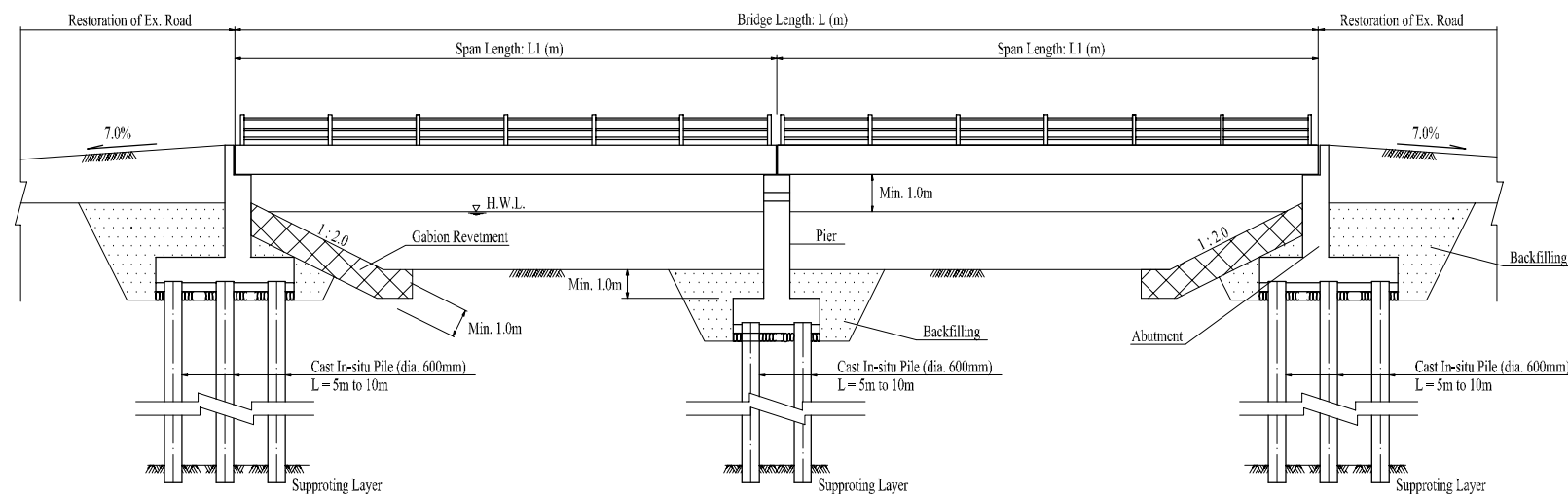
Note) □ 900x900 -Type&BxH (mm) / -Earth Channel
 2.1 -Slope (o/oo) □ -Concrete Flume
 280.00 -Length (m) ● -Channel with Gabion Revetment
 ● -Channel with Wet Masonry Revetment



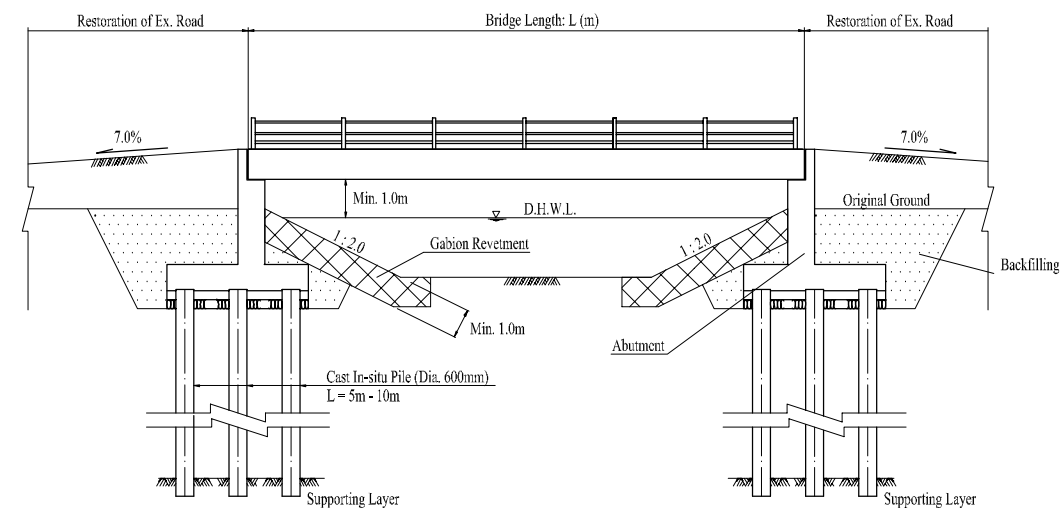
The Study on Storm Water Drainage Plan
 for the Colombo Metropolitan Region
 in the Democratic Socialist Republic of Sri Lanka
 JAPAN INTERNATIONAL COOPERATION AGENCY

Drawing 21
 Plan of Proposed Urban Drainage Improvement
 of Ratmalana - Moratuwa Scheme (2/2)

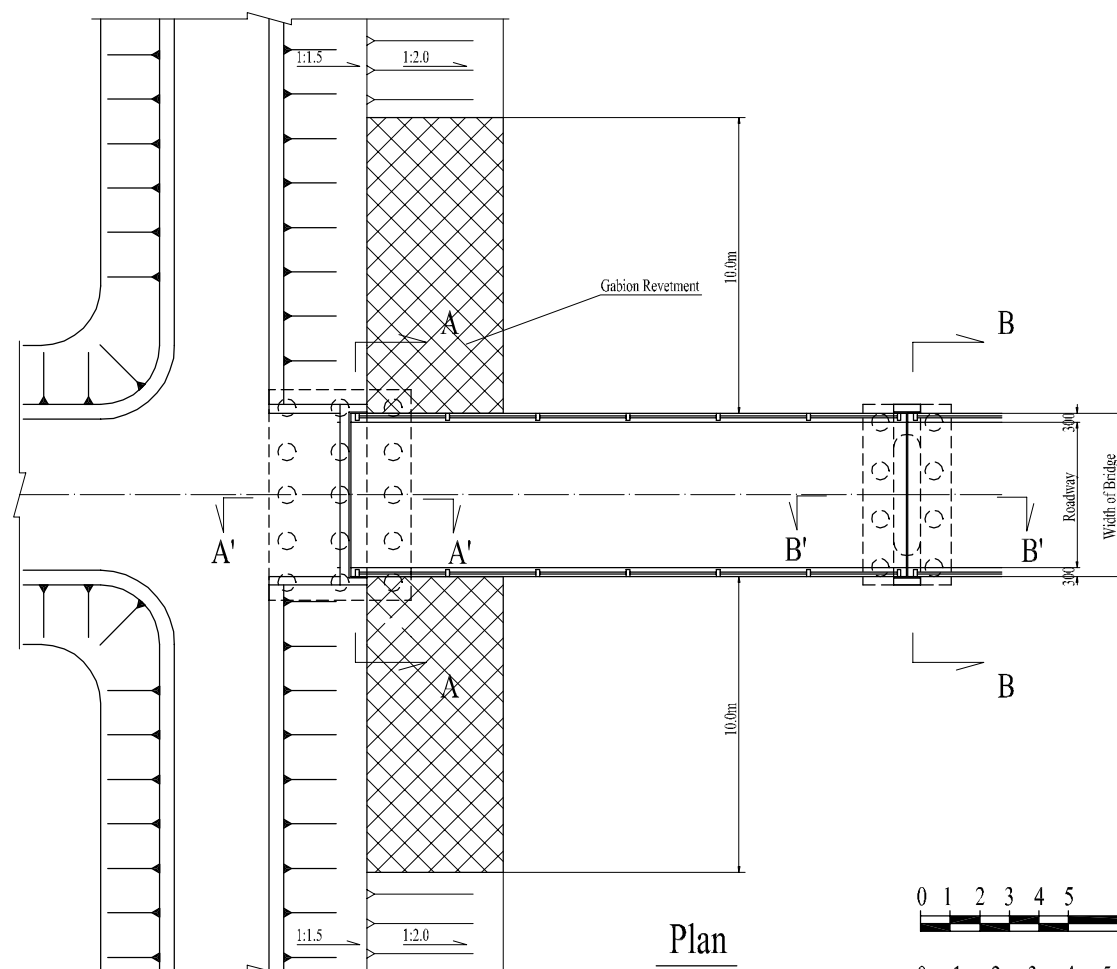




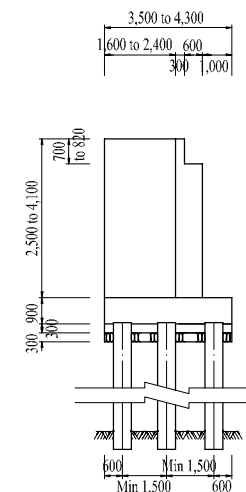
Profile of 2-Span Bridge
Scale A



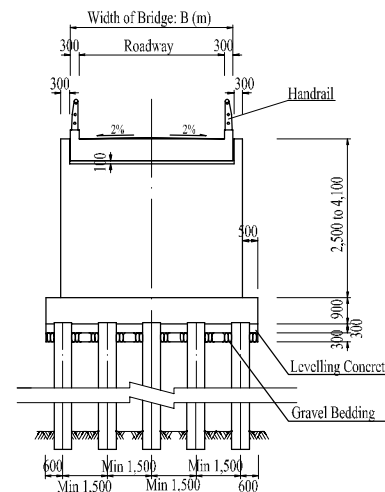
Profile of 1-Span Bridge
Scale A



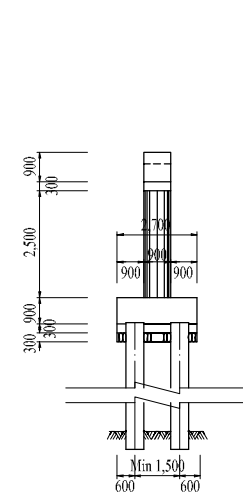
Plan
Scale B



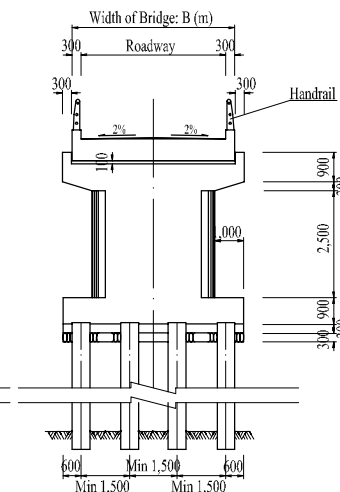
Section A' - A'
Scale B



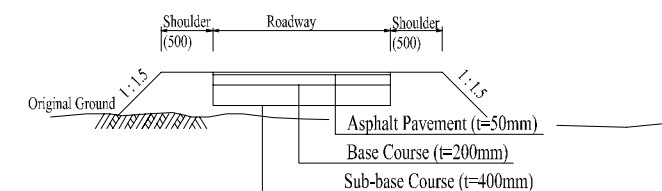
Section A - A
Scale B



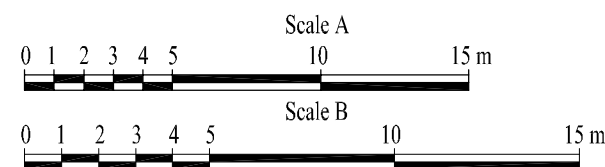
Section B' - B'
Scale B



Section B - B
Scale B

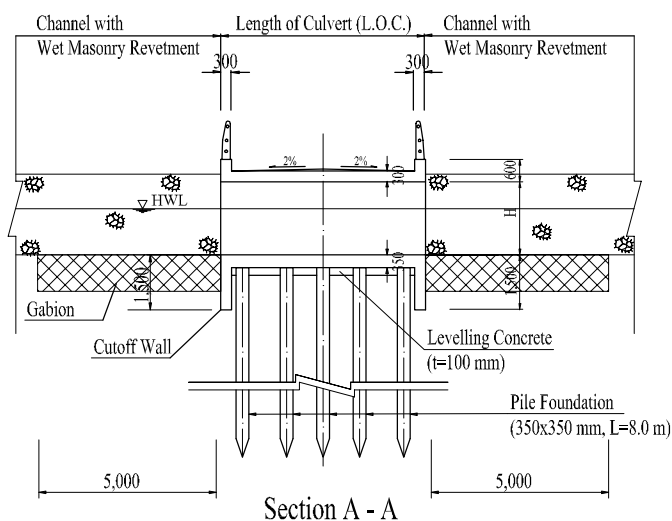
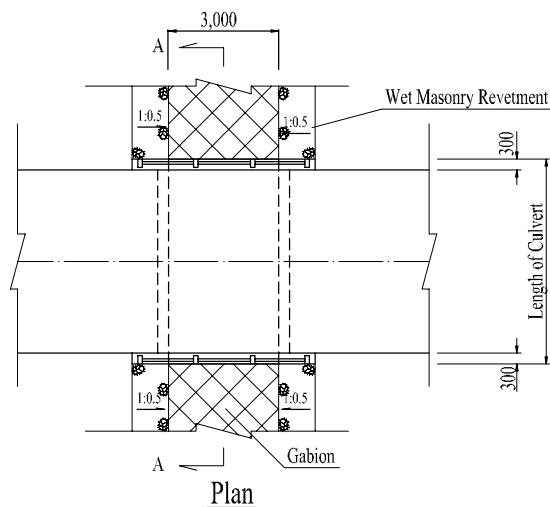
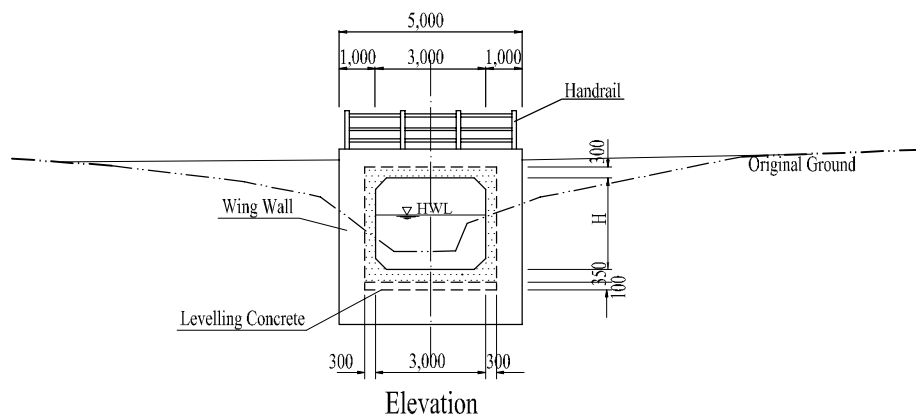


Restoration of Existing Road
No Scale



The Study on Storm Water Drainage Plan
for the Colombo Metropolitan Region
in the Democratic Socialist Republic of Sri Lanka
JAPAN INTERNATIONAL COOPERATION AGENCY

Drawing 23
Typical Design of Proposed Bridge



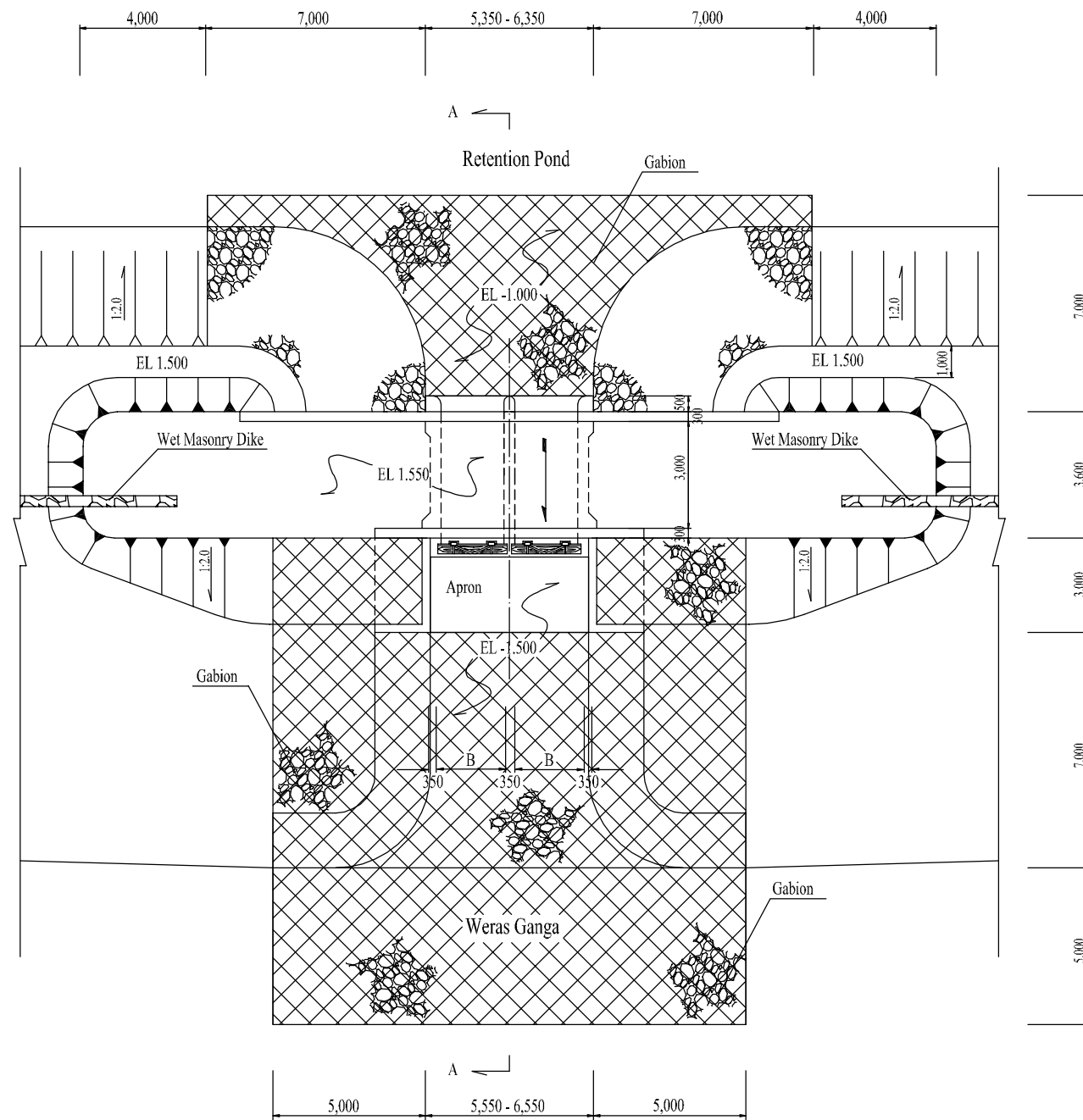
Code	HWL (m MSL)	Channel Bed (m MSL)	H (m)	Width of Road (m)	L.O.C. (m)
D6	4.002	2.348	2,100	4.0	4.6
D7	4.238	3.288	1,800	5.0	5.6



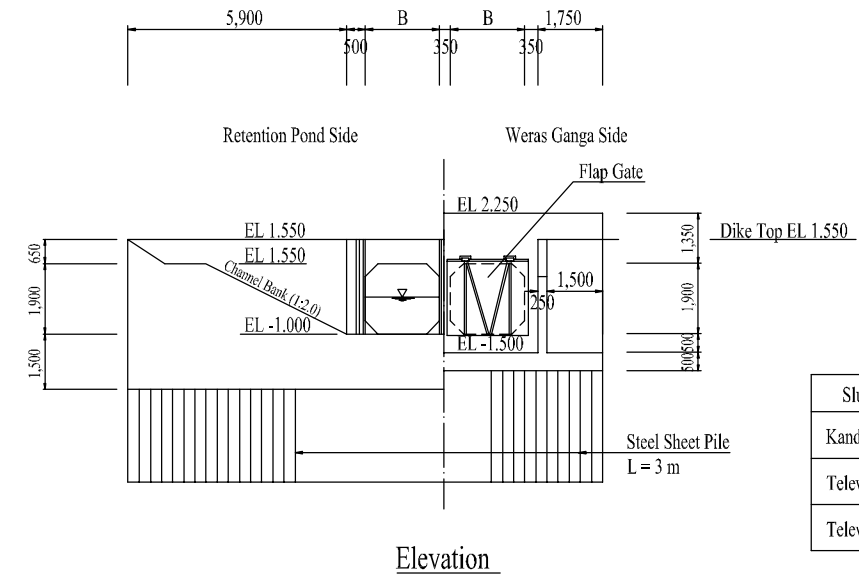
*The Study on Storm Water Drainage Plan
for the Colombo Metropolitan Region
in the Democratic Socialist Republic of Sri Lanka*

JAPAN INTERNATIONAL COOPERATION AGENCY

Drawing 24
Typical Design of Proposed Culvert of
Delkanda Ela

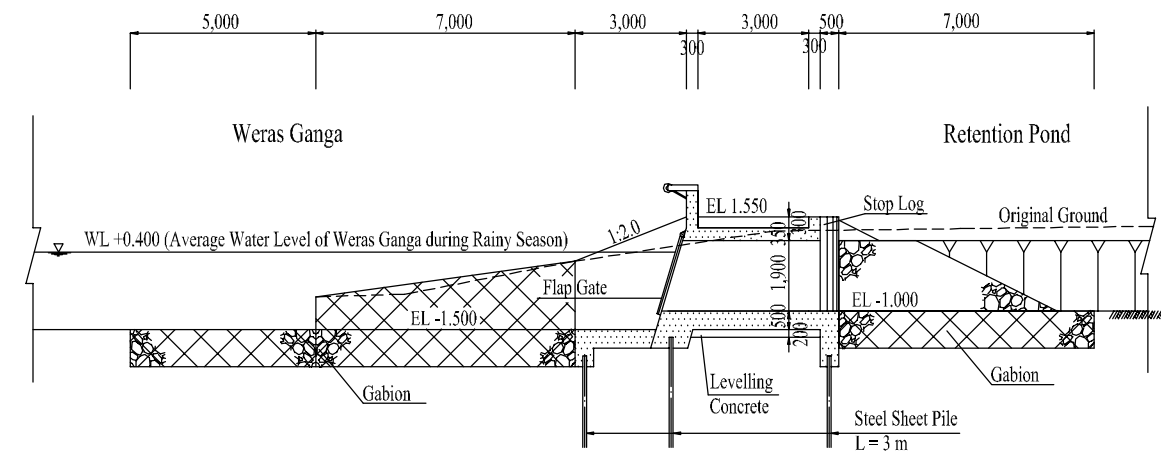


Plan

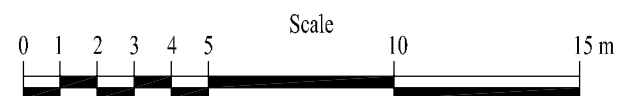


Elevation

Sluiceway	B (mm)	No. of Cell
Kandawala	2,000	2
Telewala North	2,500	2
Telewala North	2,500	2

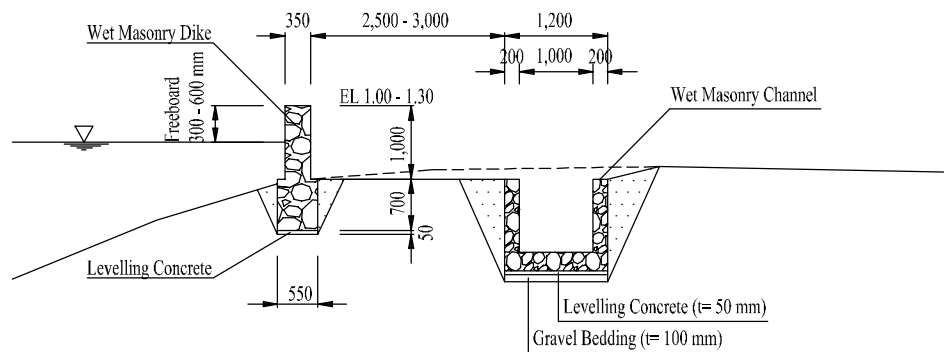


Section A-A

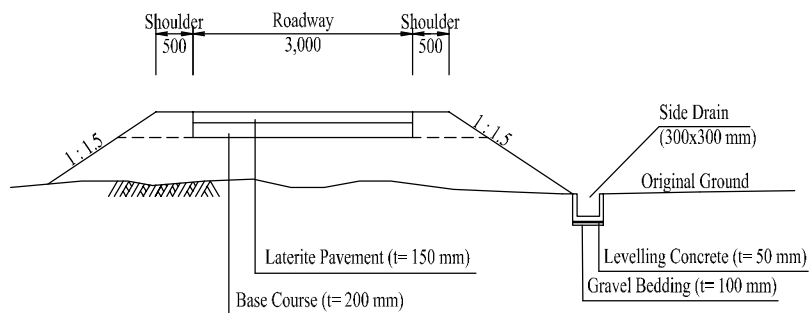


The Study on Storm Water Drainage Plan
for the Colombo Metropolitan Region
in the Democratic Socialist Republic of Sri Lanka
JAPAN INTERNATIONAL COOPERATION AGENCY

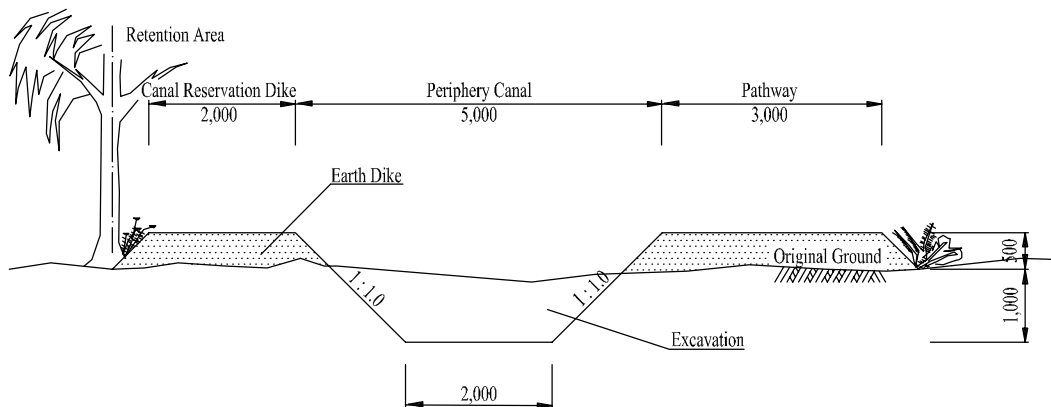
Drawing 25
Typical Design of Outlet Sluiceway
for Retention Pond



Wet Masonry Dike



Maintenance Road



Periphery Canal in Storm Water Retention Area



*The Study on Storm Water Drainage Plan
for the Colombo Metropolitan Region
in the Democratic Socialist Republic of Sri Lanka*

JAPAN INTERNATIONAL COOPERATION AGENCY

Drawing 26

**Typical Cross Sections of Proposed Wet Masonry
Dike, Maintenance Road and Periphery Canal**