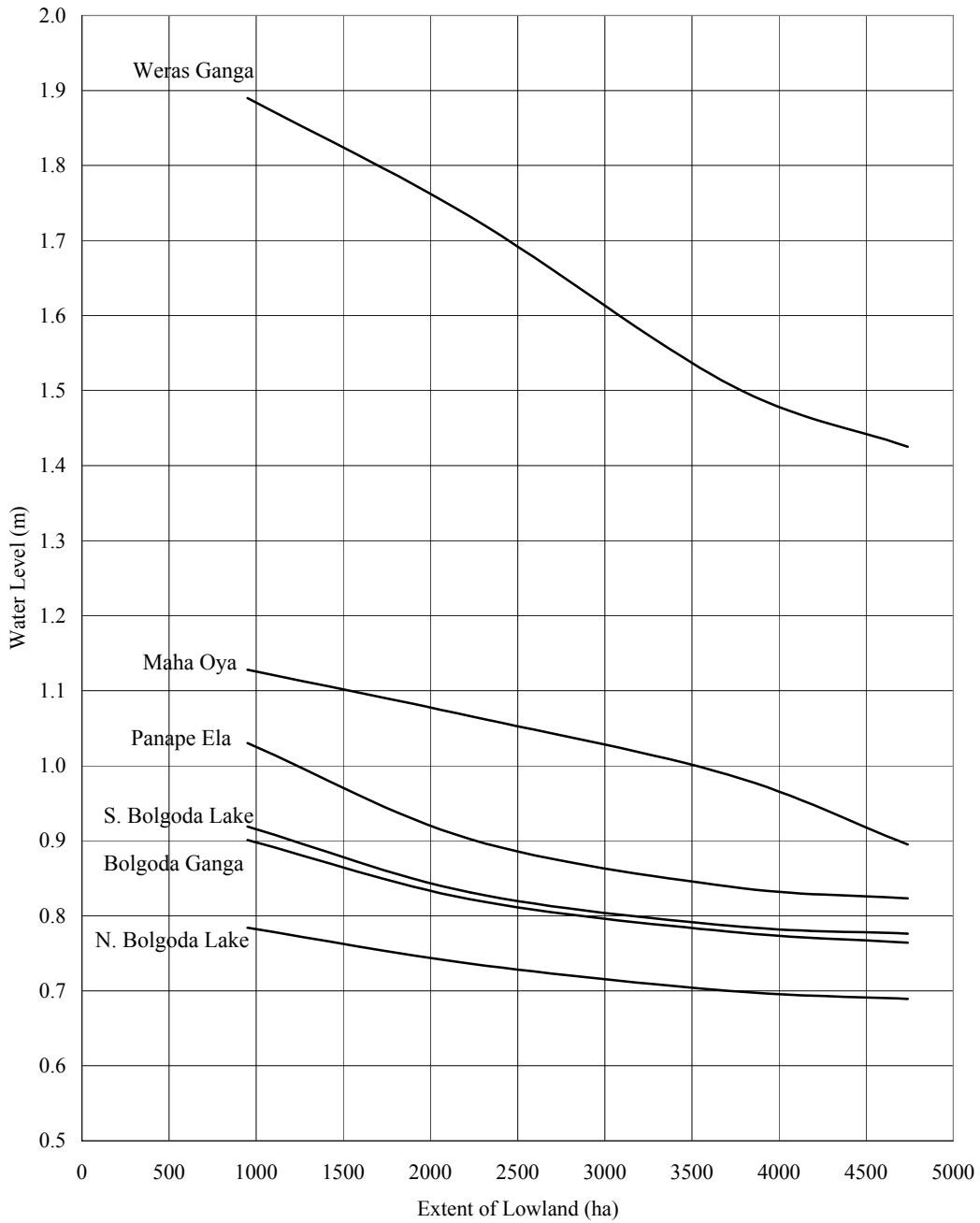


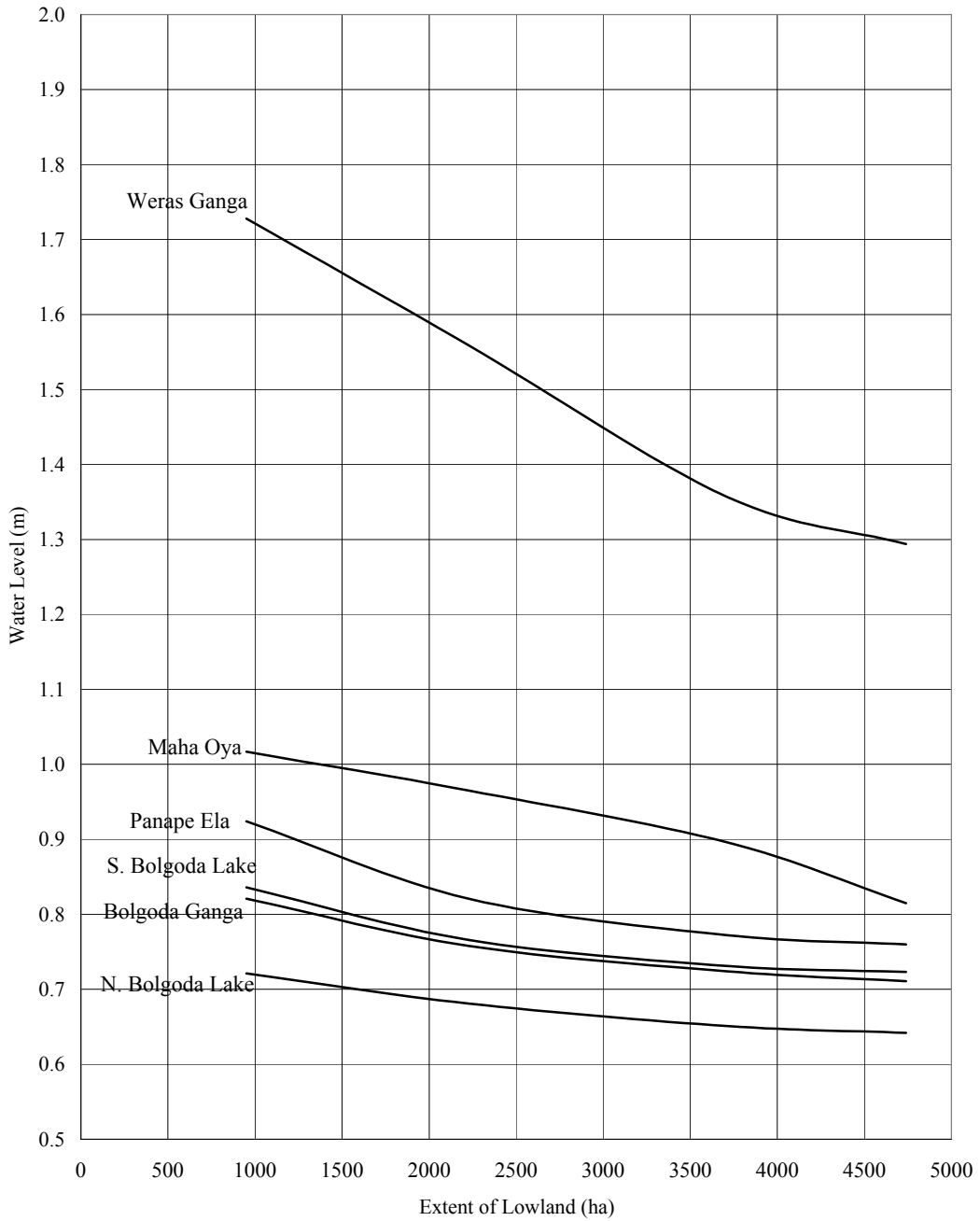
Bolgoda Basin 50-year Return Period



(Elevation)	+0.0 m	+0.5 m	+1.0 m	+1.5 m
(Area)	950 ha	2,227 ha	3,710 ha	4,739 ha

<p><i>The Study on Storm Water Drainage Plan for the Colombo Metropolitan Region in the Democratic Socialist Republic of Sri Lanka</i></p> <p>JAPAN INTERNATIONAL COOPERATION AGENCY</p>	<p>Figure 8.3.5 Relationship between Retention of Lowland and Water Level in Bolgoda Basin (1/3) (50-year Return Period)</p>
--	--

Bolgoda Basin 25-year Return Period

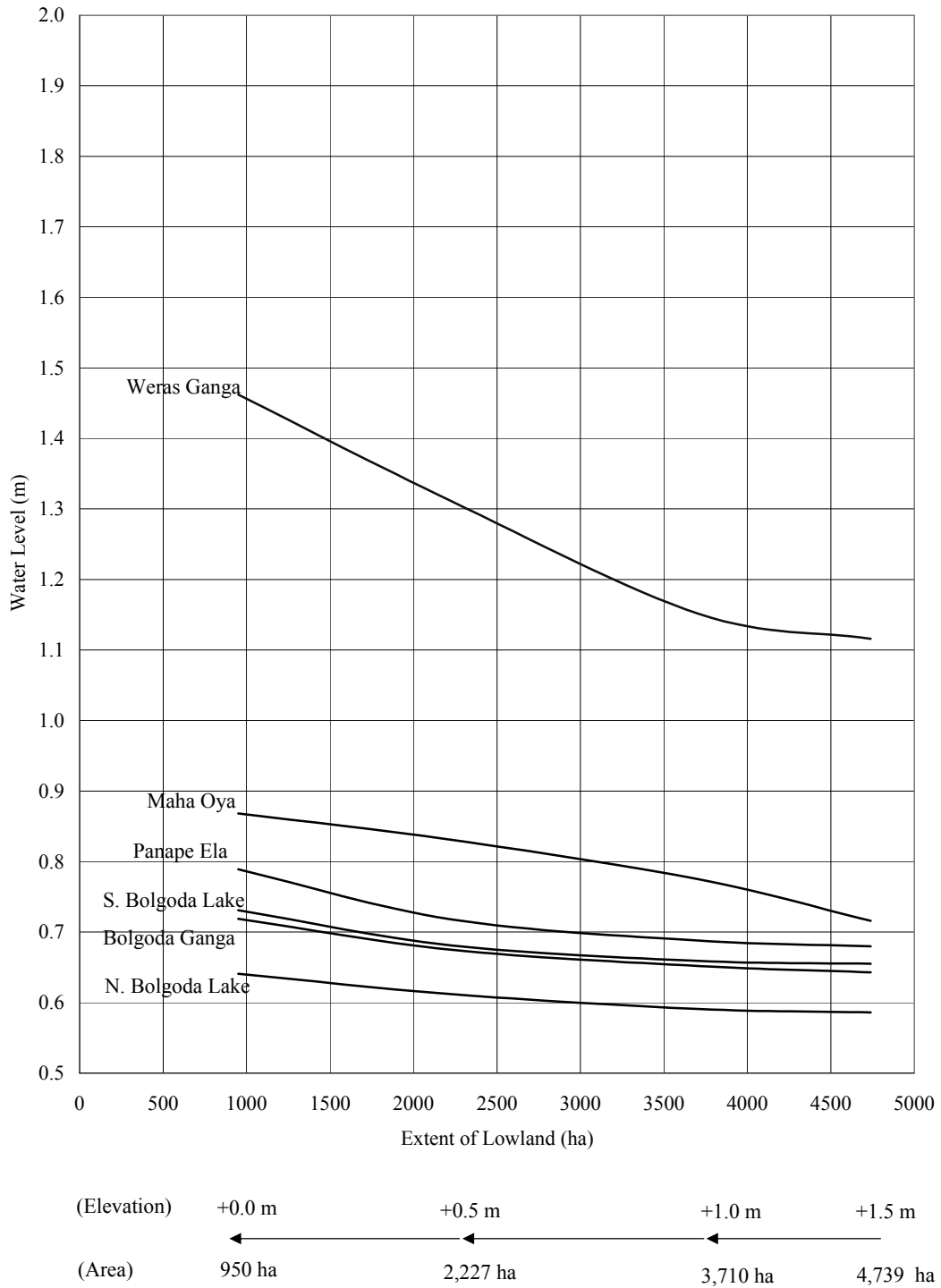


(Elevation)	+0.0 m	+0.5 m	+1.0 m	+1.5 m
(Area)	950 ha	2,227 ha	3,710 ha	4,739 ha

*The Study on Storm Water Drainage Plan
for the Colombo Metropolitan Region
in the Democratic Socialist Republic of Sri Lanka*
JAPAN INTERNATIONAL COOPERATION AGENCY

Figure 8.3.5
Relationship between Retention of Lowland and Water
Level in Bolgoda Basin (2/3)
(25-year Return Period)

Bolgoda Basin 10-year Return Period



*The Study on Storm Water Drainage Plan
for the Colombo Metropolitan Region
in the Democratic Socialist Republic of Sri Lanka*
JAPAN INTERNATIONAL COOPERATION AGENCY

Figure 8.3.5
Relationship between Retention of Lowland and Water
Level in Bolgoda Basin (3/3)
(10-year Return Period)

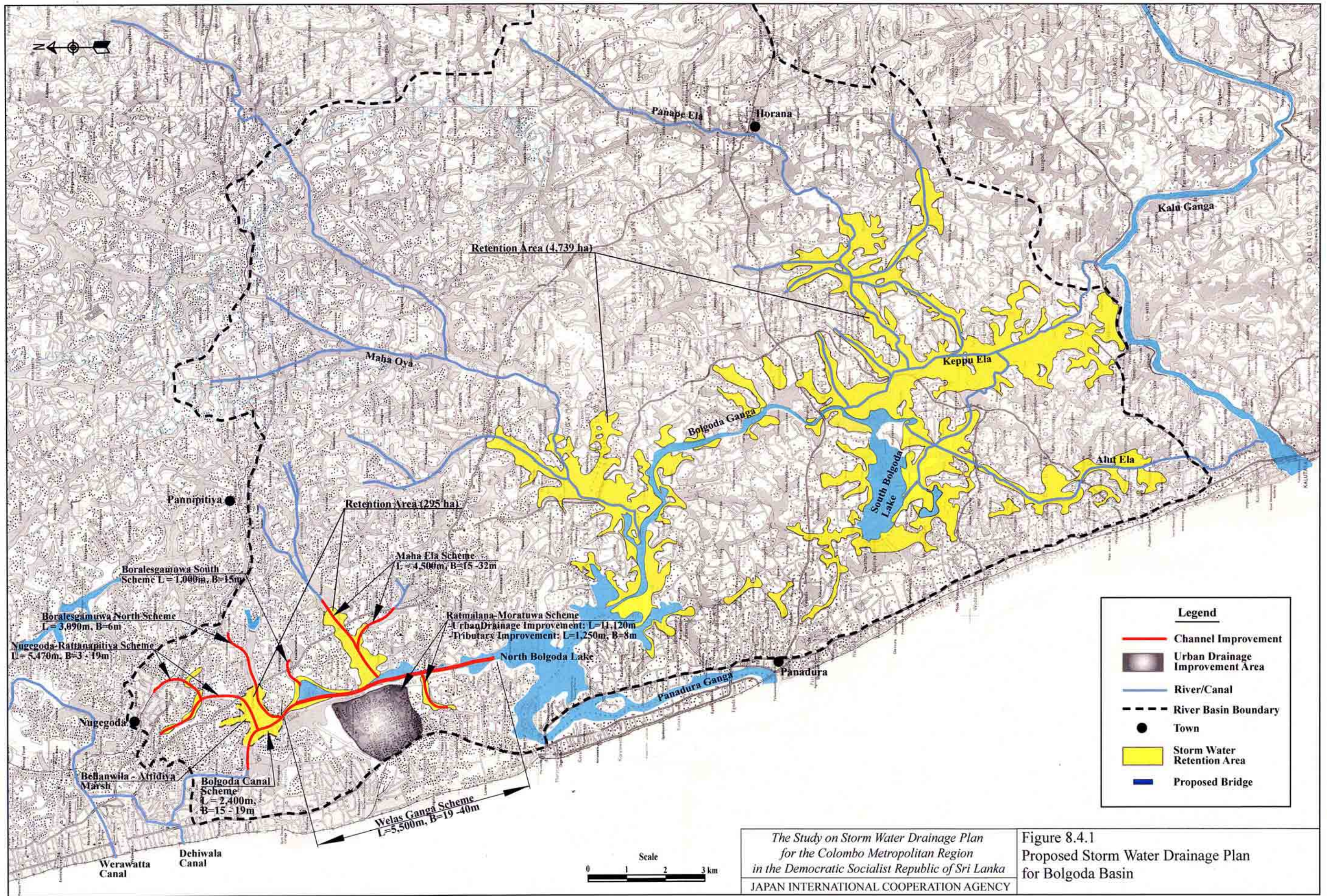
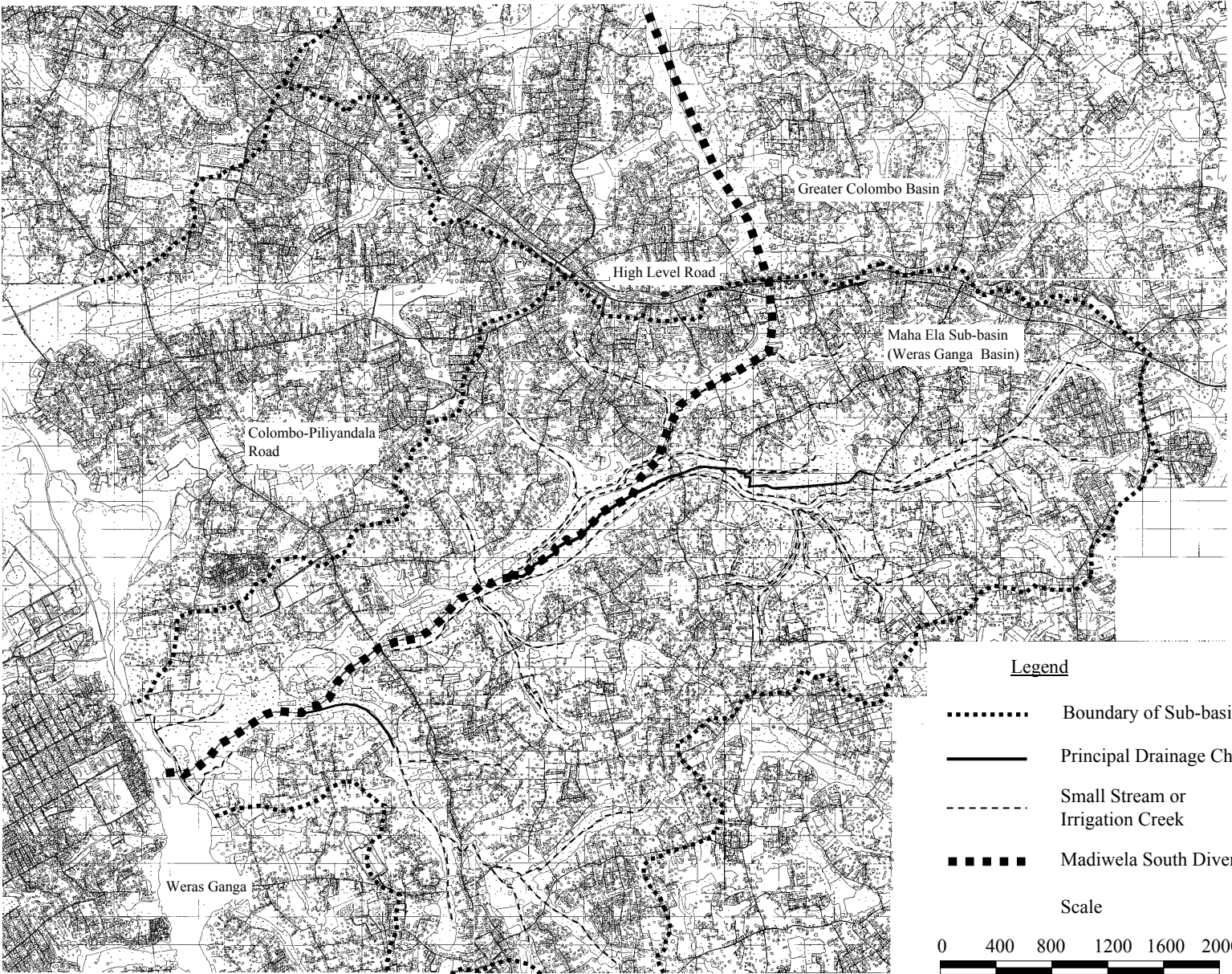


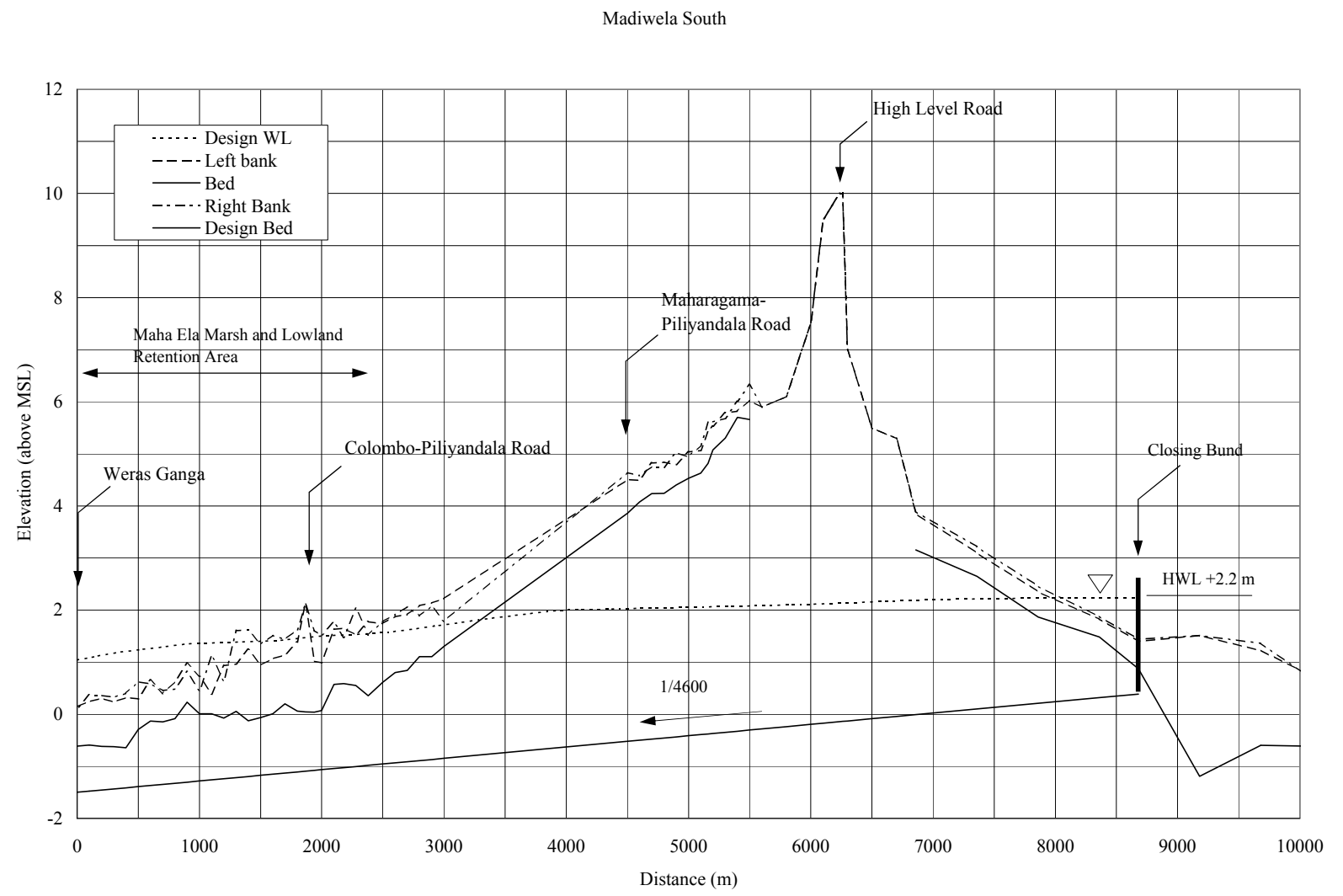
Figure 8.4.1
Proposed Storm Water Drainage Plan for Bolgoda Basin

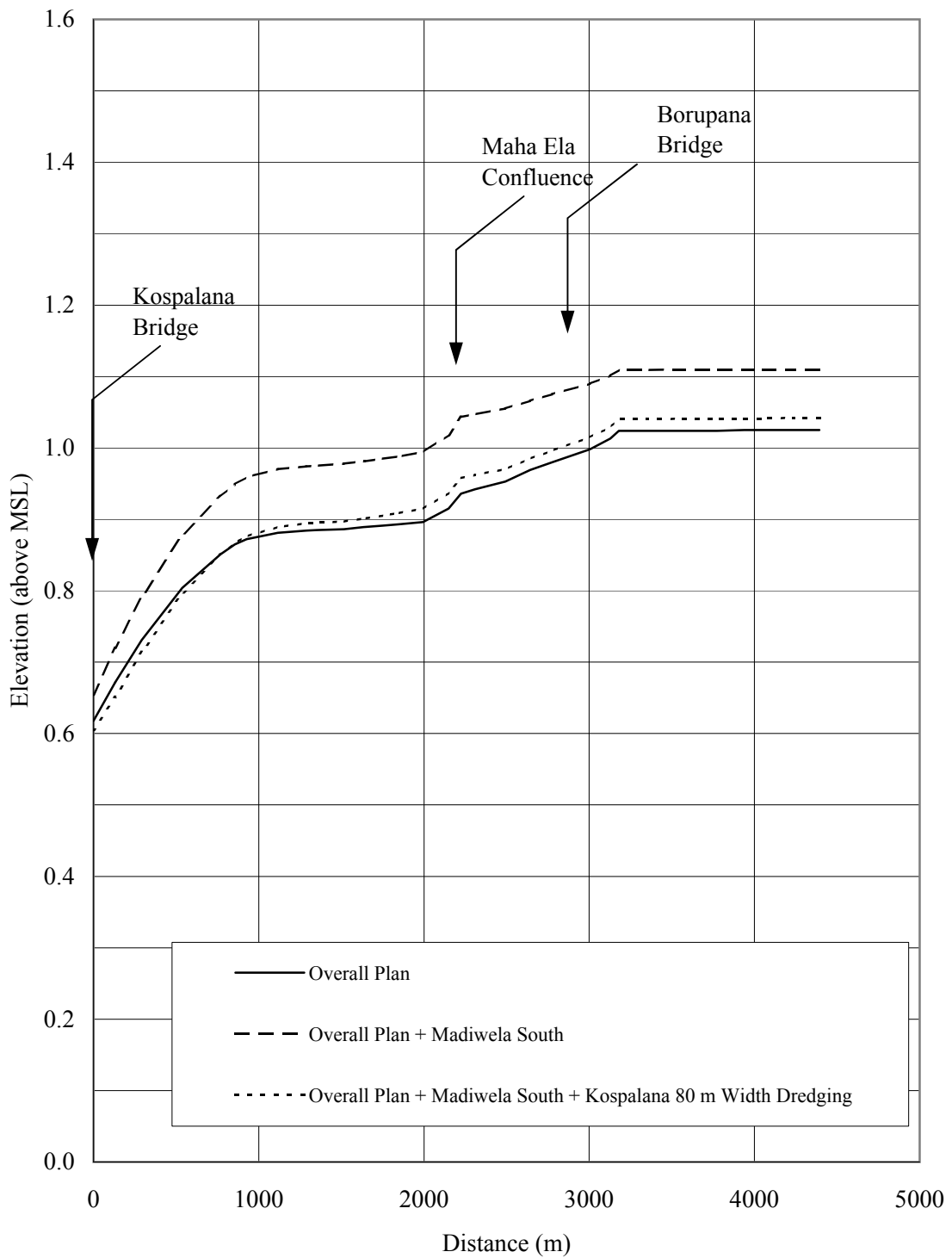


*The Study on Storm Water Drainage Plan
for the Colombo Metropolitan Region
in the Democratic Socialist Republic of Sri Lanka*
JAPAN INTERNATIONAL COOPERATION AGENCY

Figure 8.5.1
Route of Madiwela South Diversion

Figure 8.5.2
Longitudinal Profile of Madiwela
South Division





The Study on Storm Water Drainage Plan for the Colombo Metropolitan Region in the Democratic Socialist Republic of Sri Lanka

JAPAN INTERNATIONAL COOPERATION AGENCY

Figure 8.5.3
Longitudinal Profiles of Estimated Water Level in Weras Ganga