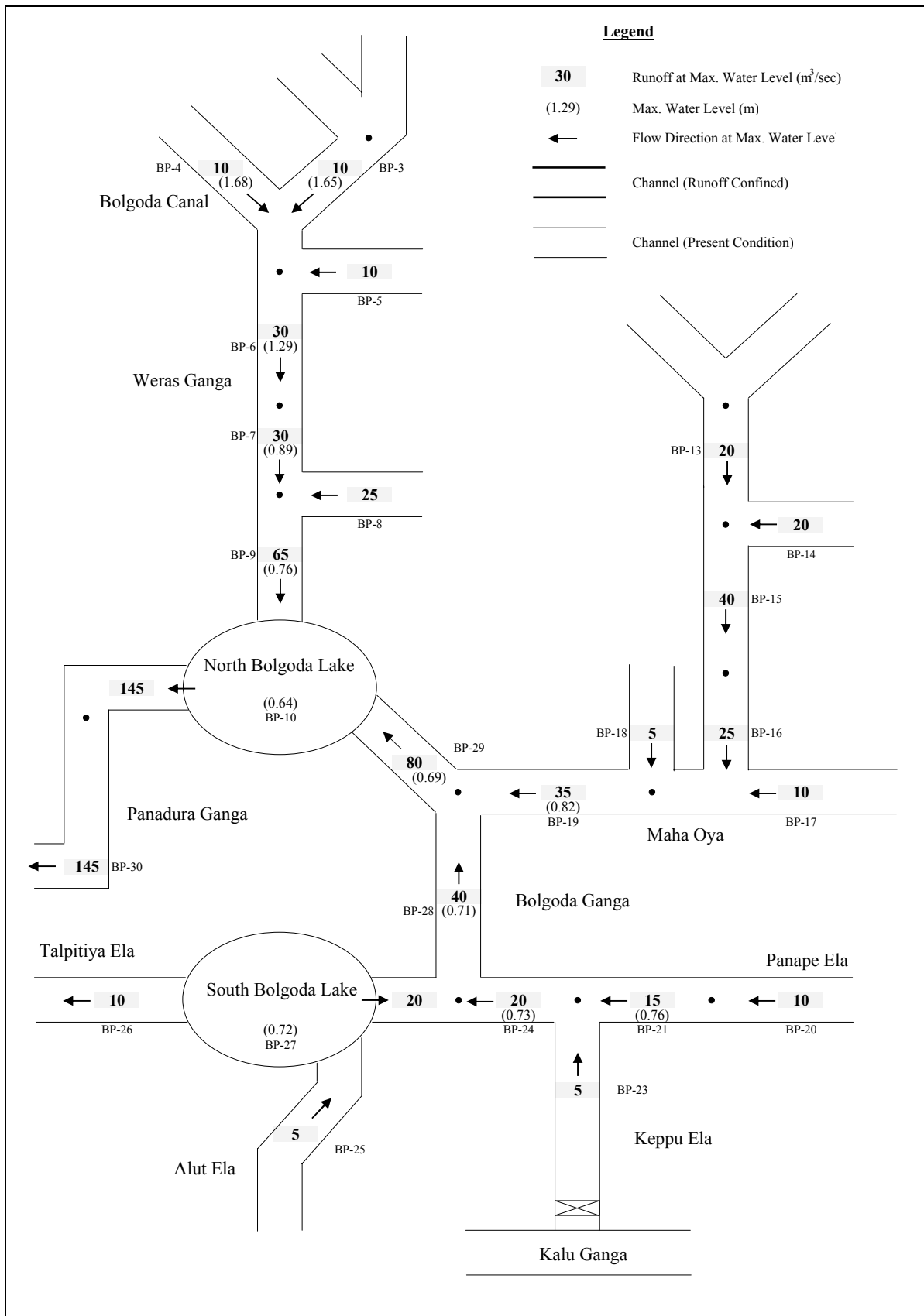


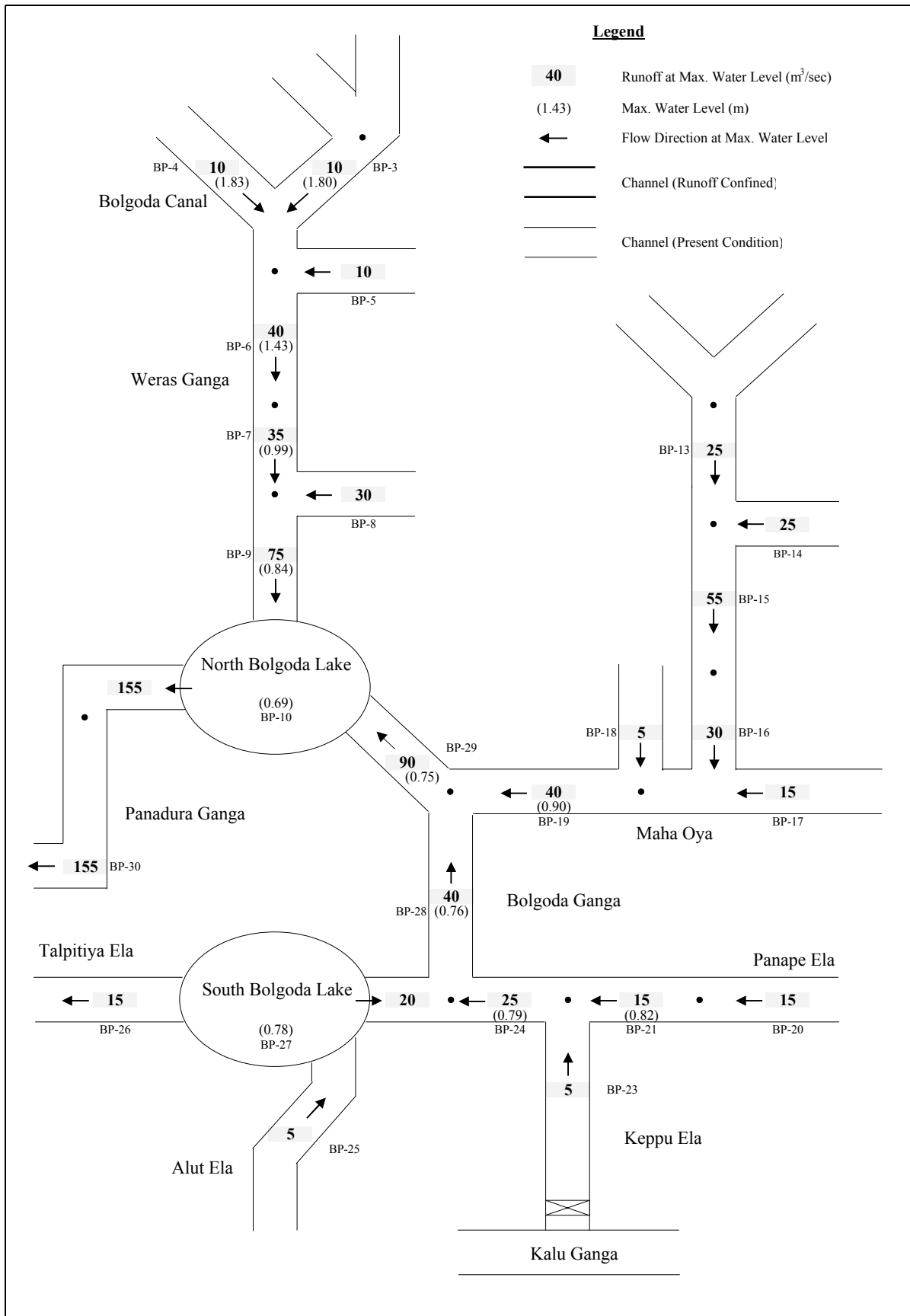
*The Study on Storm Water Drainage Plan
for the Colombo Metropolitan Region
in the Democratic Socialist Republic of Sri Lanka*
JAPAN INTERNATIONAL COOPERATION AGENCY

Figure 8.2.4
Diagram of Probable Flood Runoff in the Bolgoda Basin (10-year Return Period)



*The Study on Storm Water Drainage Plan
for the Colombo Metropolitan Region
in the Democratic Socialist Republic of Sri Lanka*
JAPAN INTERNATIONAL COOPERATION AGENCY

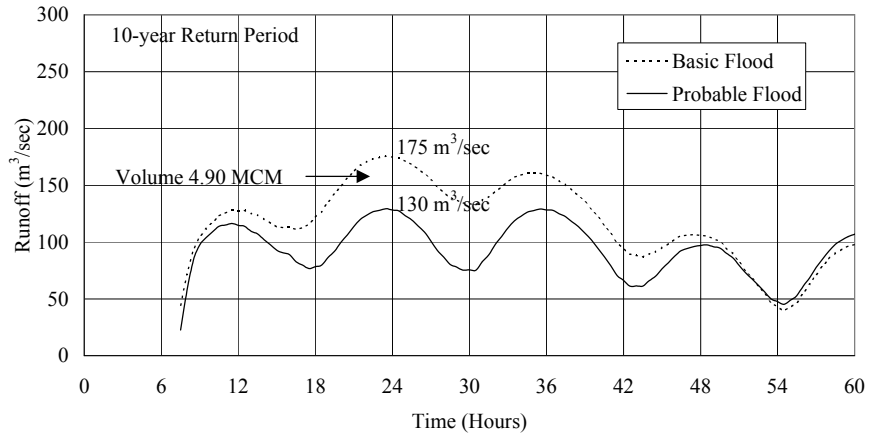
Figure 8.2.5
Diagram of Probable Flood Runoff in the Bolgoda Basin (25-year Return Period)



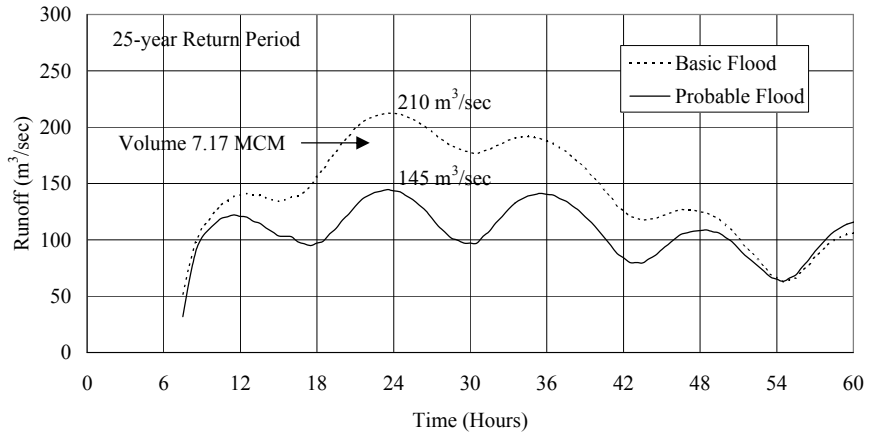
The Study on Storm Water Drainage Plan
for the Colombo Metropolitan Region
in the Democratic Socialist Republic of Sri Lanka
JAPAN INTERNATIONAL COOPERATION AGENCY

Figure 8.2.6
Diagram of Probable Flood Runoff in the
Bolgoda Basin (50-year Return Period)

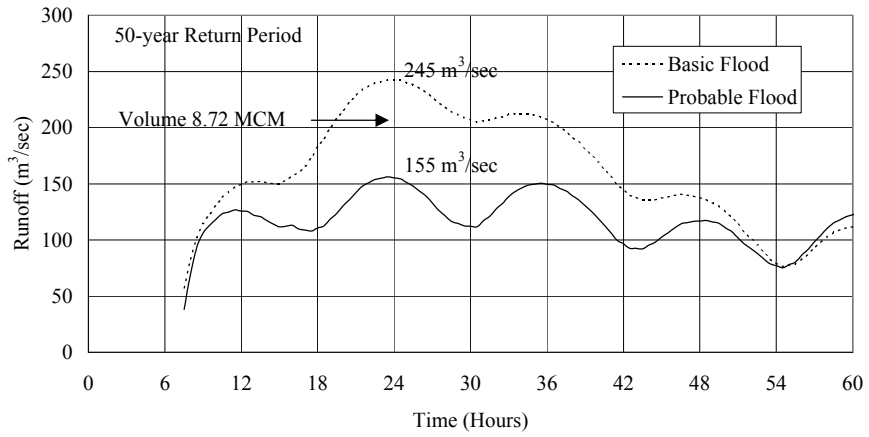
Panadura Ganga at Sea Outfall



Panadura Ganga at Sea Outfall



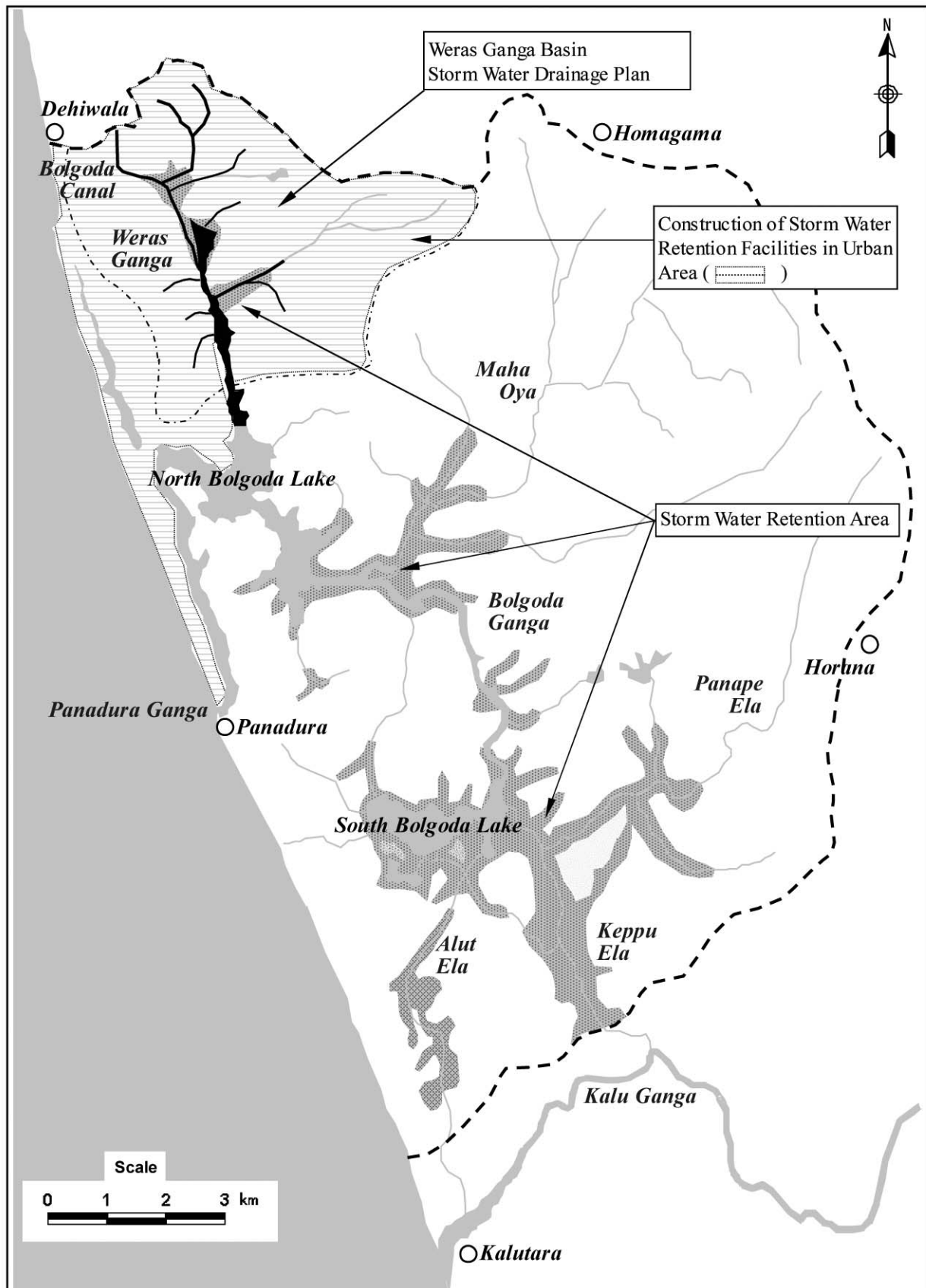
Panadura Ganga at Sea Outfall



The Study on Storm Water Drainage Plan
for the Colombo Metropolitan Region
in the Democratic Socialist Republic of Sri Lanka

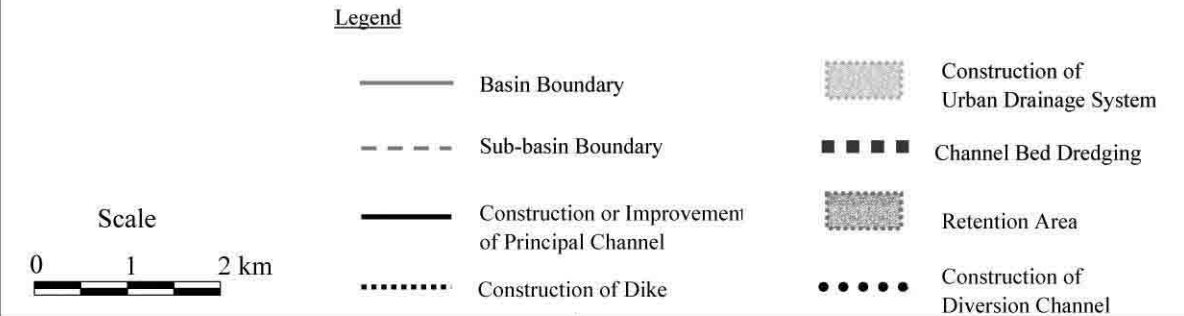
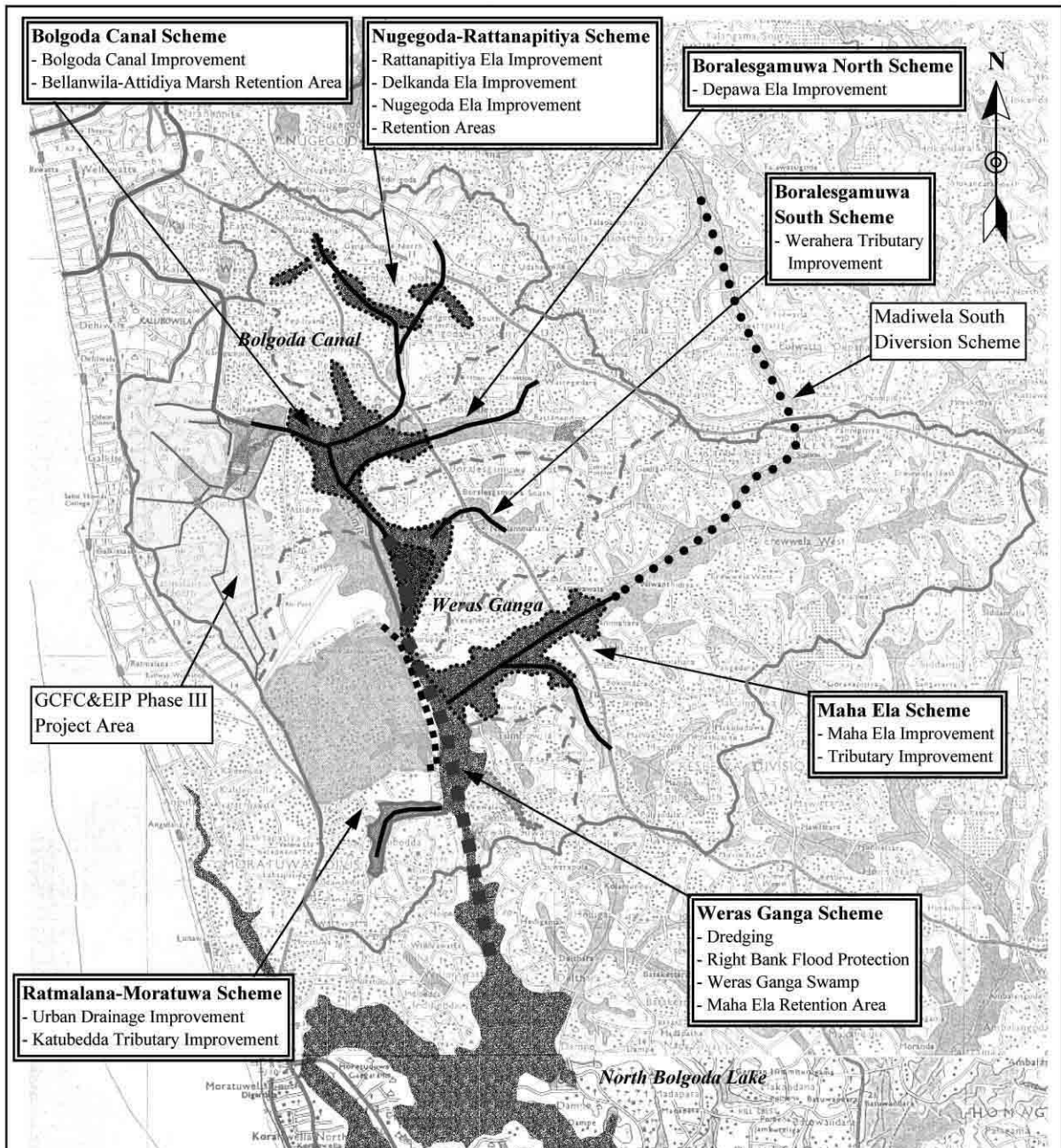
JAPAN INTERNATIONAL COOPERATION AGENCY

Figure 8.2.7
Runoff Hydrograph in Panadura Ganga
at Sea Outfall



*The Study on Storm Water Drainage Plan
for the Colombo Metropolitan Region
in the Democratic Socialist Republic of Sri Lanka*
JAPAN INTERNATIONAL COOPERATION AGENCY

Figure 8.3.1
Conceivable Structural Measures for
Bolgoda Basin



The Study on Storm Water Drainage Plan for the Colombo Metropolitan Region in the Democratic Socialist Republic of Sri Lanka

JAPAN INTERNATIONAL COOPERATION AGENCY

Figure 8.3.2
Conceivable Structural Measures for Weras Ganga Basin

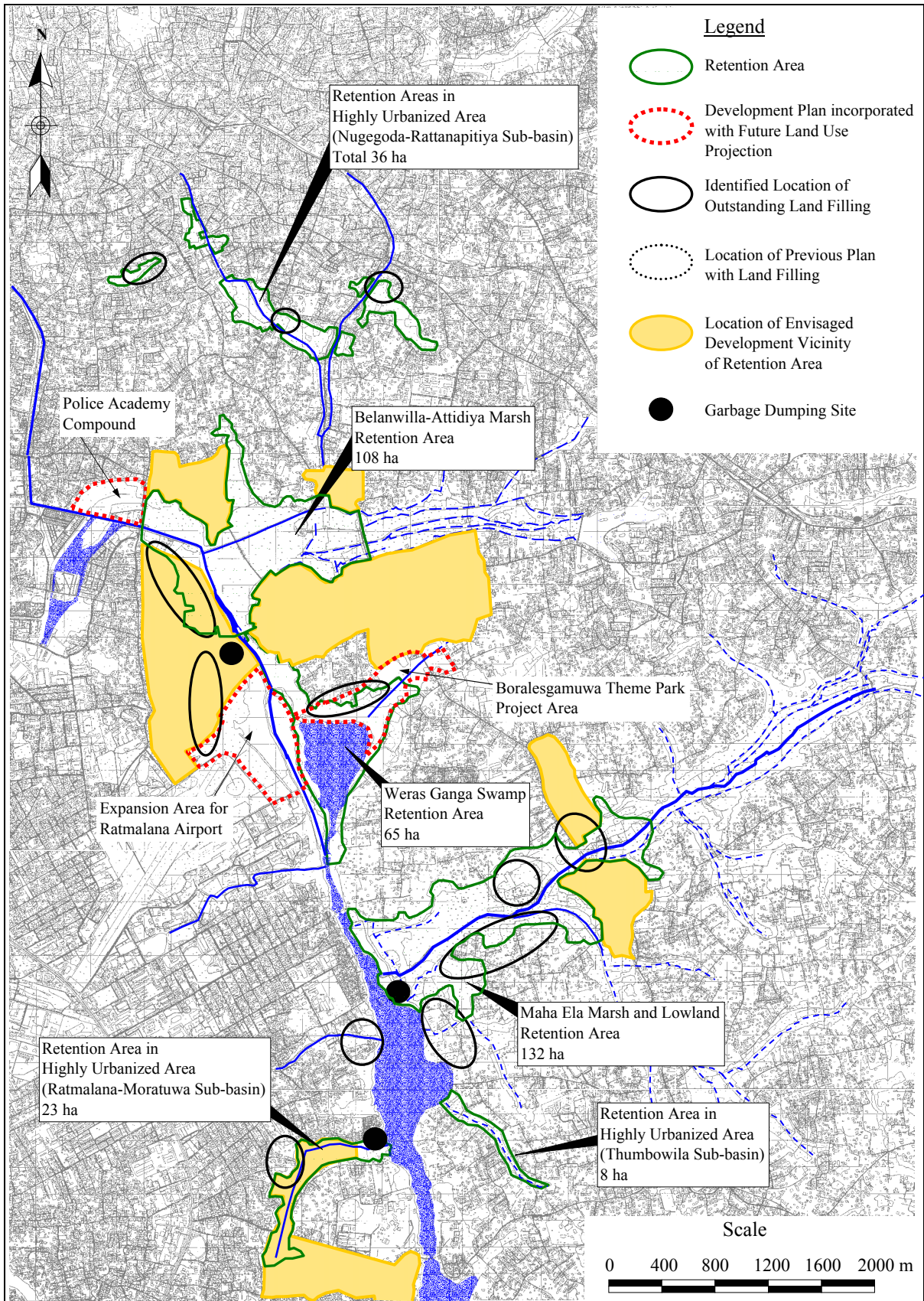


Figure 8.3.3
Retention Areas under Future Land Use Projection