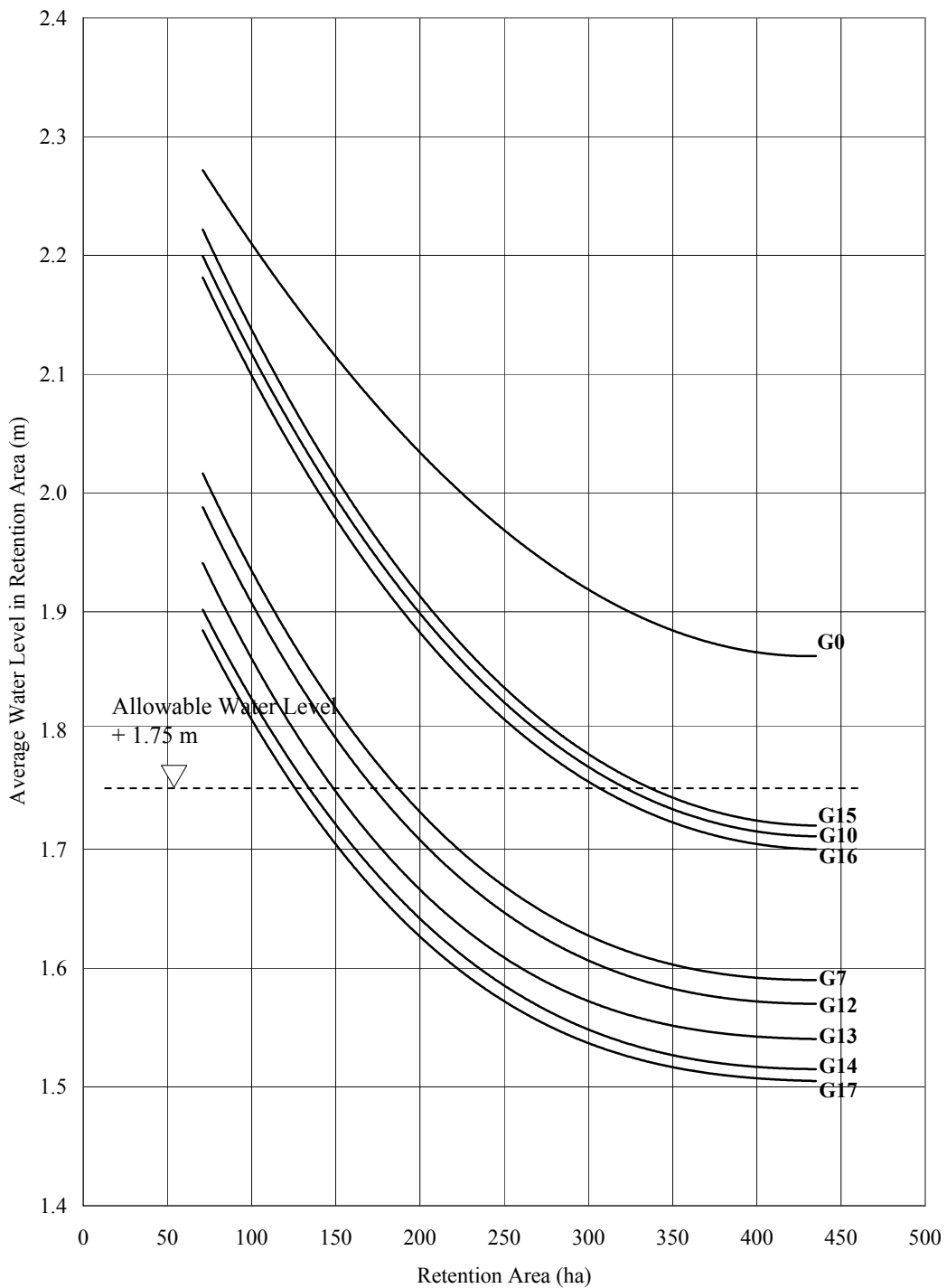


*The Study on Storm Water Drainage Plan
for the Colombo Metropolitan Region
in the Democratic Socialist Republic of Sri Lanka*

JAPAN INTERNATIONAL COOPERATION AGENCY

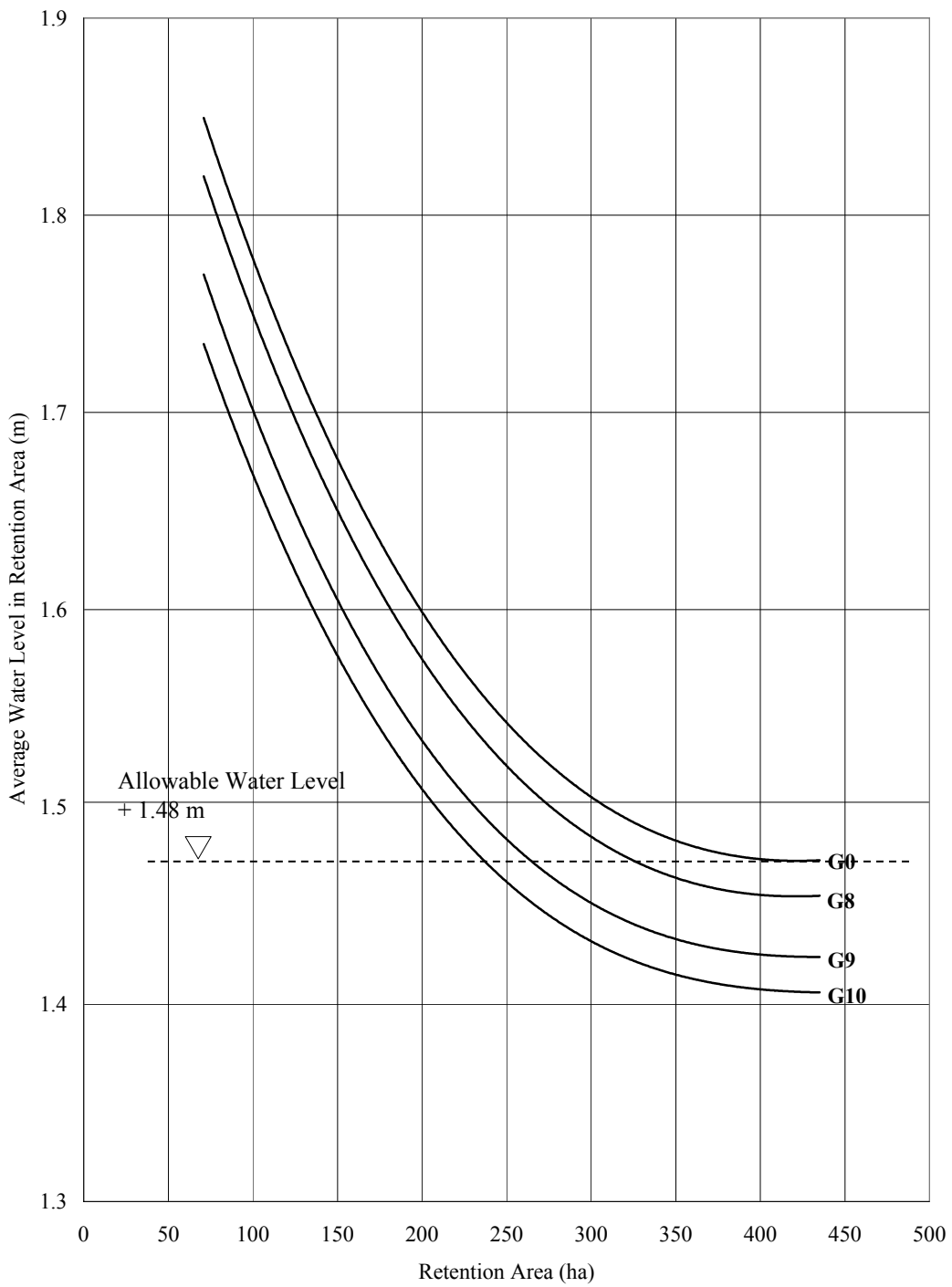
Figure 7.3.10
Relationship between Retention Area and Water
Level in the Greater Colombo Basin (Return Period
50-years)



*The Study on Storm Water Drainage Plan
for the Colombo Metropolitan Region
in the Democratic Socialist Republic of Sri Lanka*

JAPAN INTERNATIONAL COOPERATION AGENCY

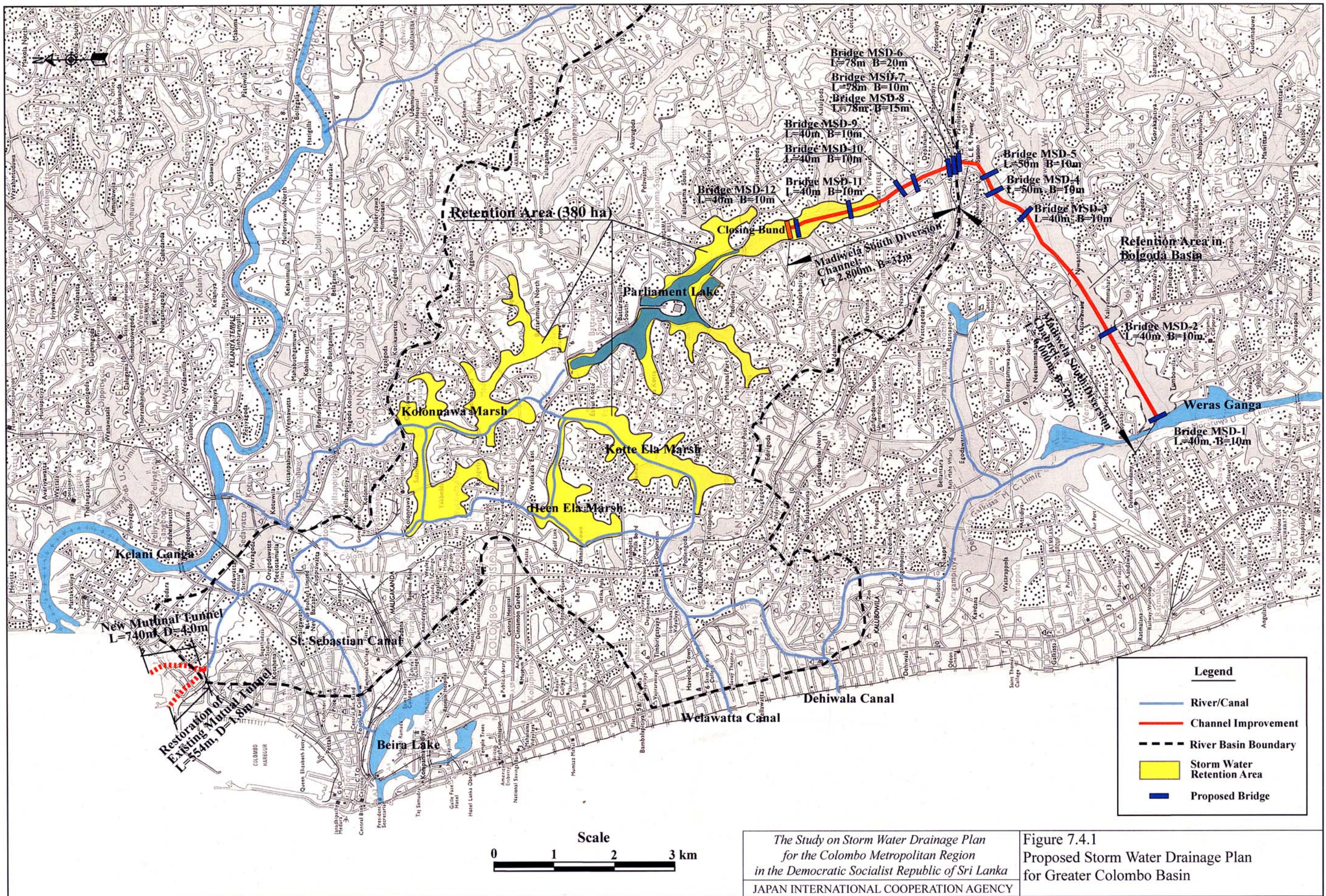
Figure 7.3.11
Relationship between Retention Area and Water
Level in the Greater Colombo Basin (Return Period
25-years)

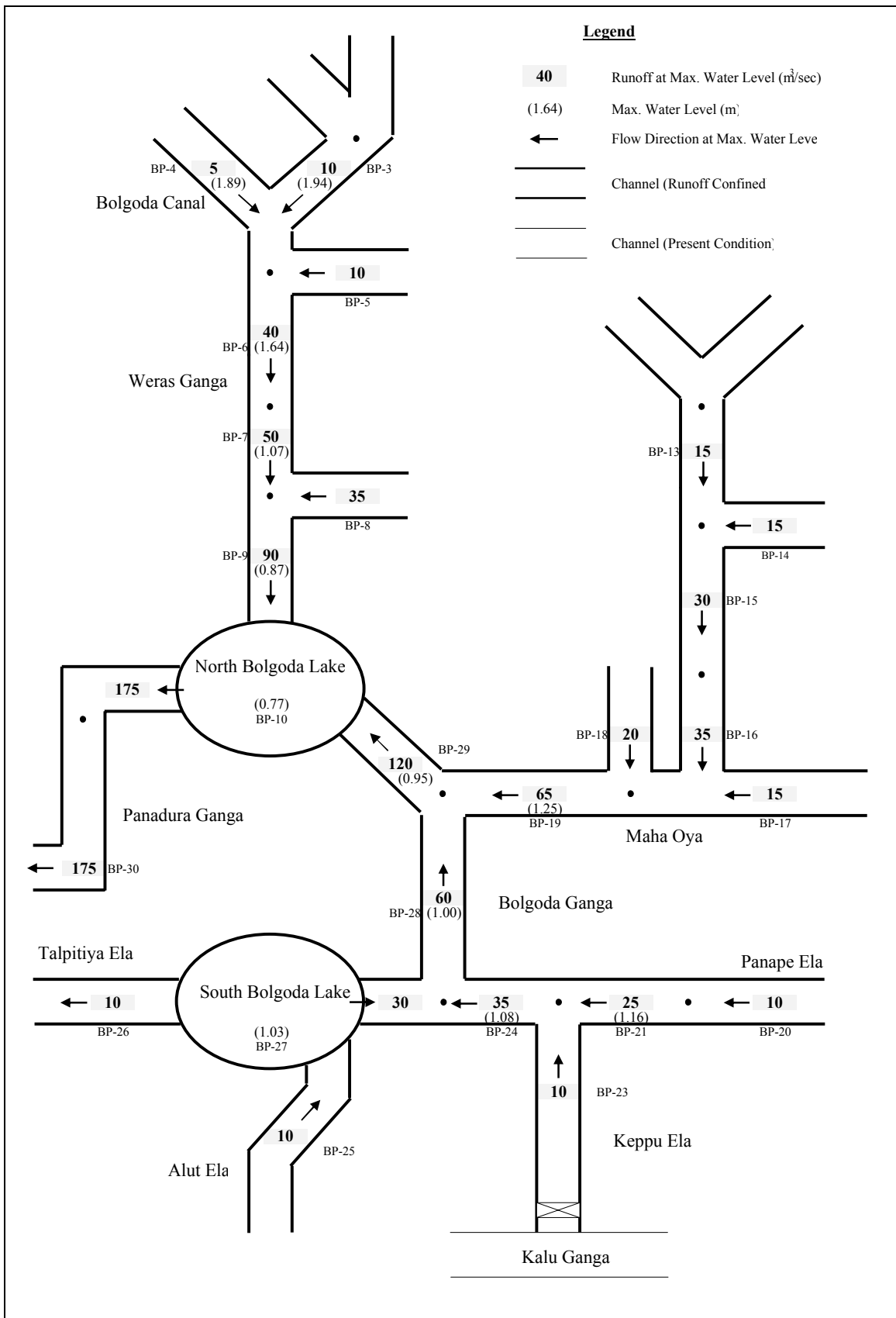


*The Study on Storm Water Drainage Plan
for the Colombo Metropolitan Region
in the Democratic Socialist Republic of Sri Lanka*

JAPAN INTERNATIONAL COOPERATION AGENCY

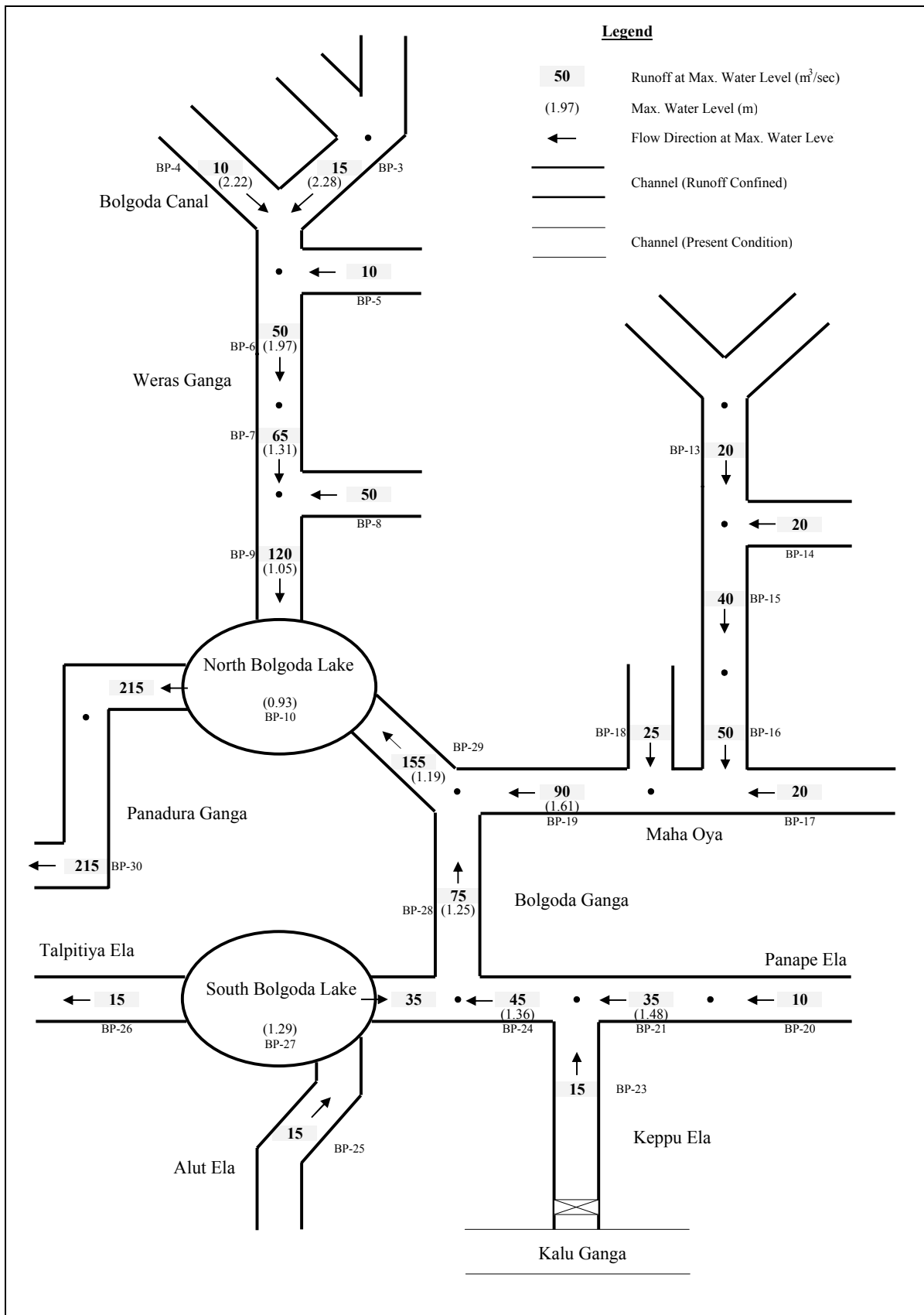
Figure 7.3.12
Relationship between Retention Area and Water
Level in the Greater Colombo Basin (Return Period
10-years)





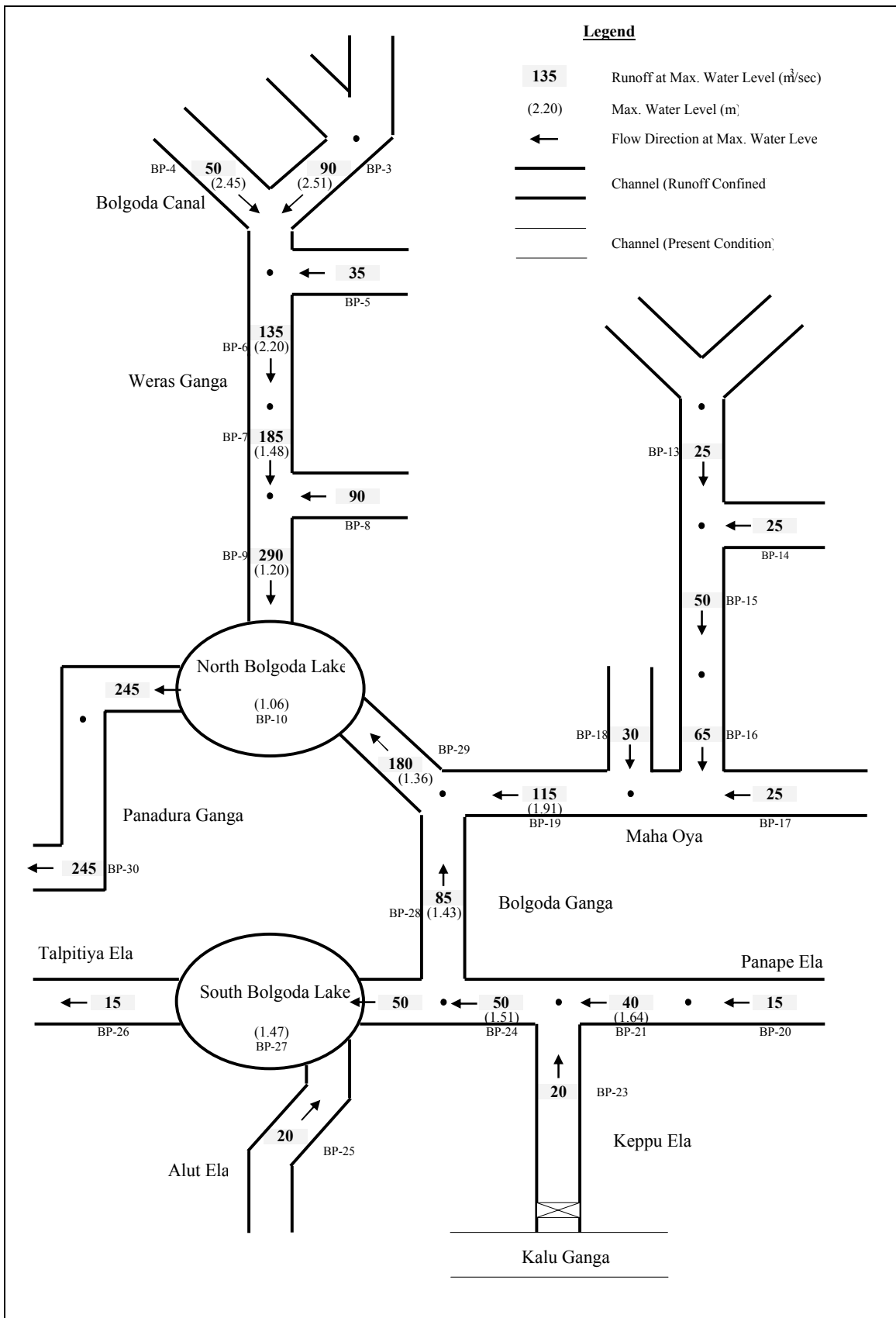
*The Study on Storm Water Drainage Plan
for the Colombo Metropolitan Region
in the Democratic Socialist Republic of Sri Lanka*
JAPAN INTERNATIONAL COOPERATION AGENCY

Figure 8.2.1
Diagram of Basic Flood Runoff in the Bolgoda Basin (10-year Return Period)



*The Study on Storm Water Drainage Plan
for the Colombo Metropolitan Region
in the Democratic Socialist Republic of Sri Lanka*
JAPAN INTERNATIONAL COOPERATION AGENCY

Figure 8.2.2
Diagram of Basic Flood Runoff in the Bolgoda Basin (25-year Return Period)



*The Study on Storm Water Drainage Plan
for the Colombo Metropolitan Region
in the Democratic Socialist Republic of Sri Lanka*
JAPAN INTERNATIONAL COOPERATION AGENCY

Figure 8.2.3
Diagram of Basic Flood Runoff in the Bolgoda Basin (50-year Return Period)