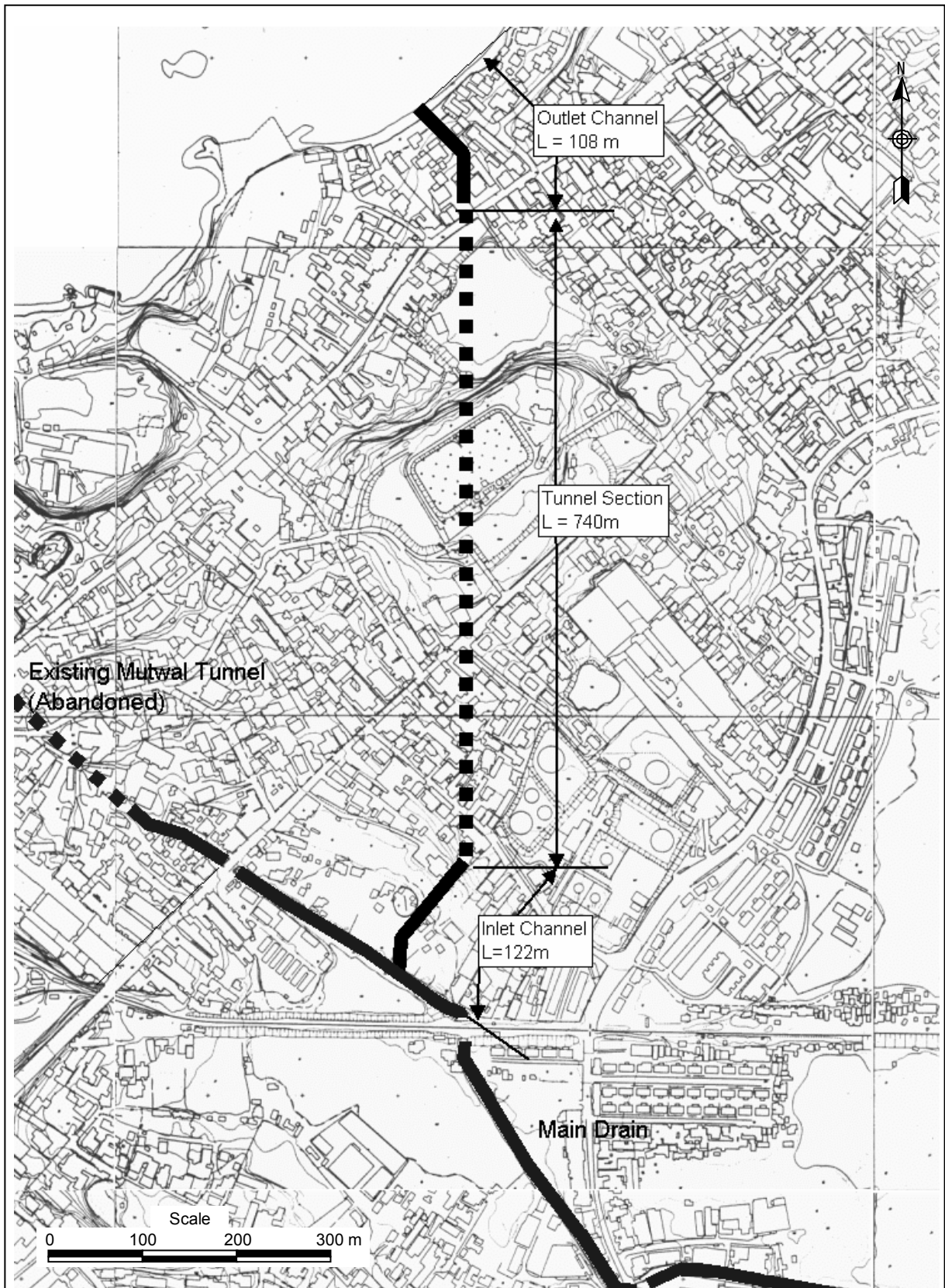


*The Study on Storm Water Drainage Plan
for the Colombo Metropolitan Region
in the Democratic Socialist Republic of Sri Lanka*
JAPAN INTERNATIONAL COOPERATION AGENCY

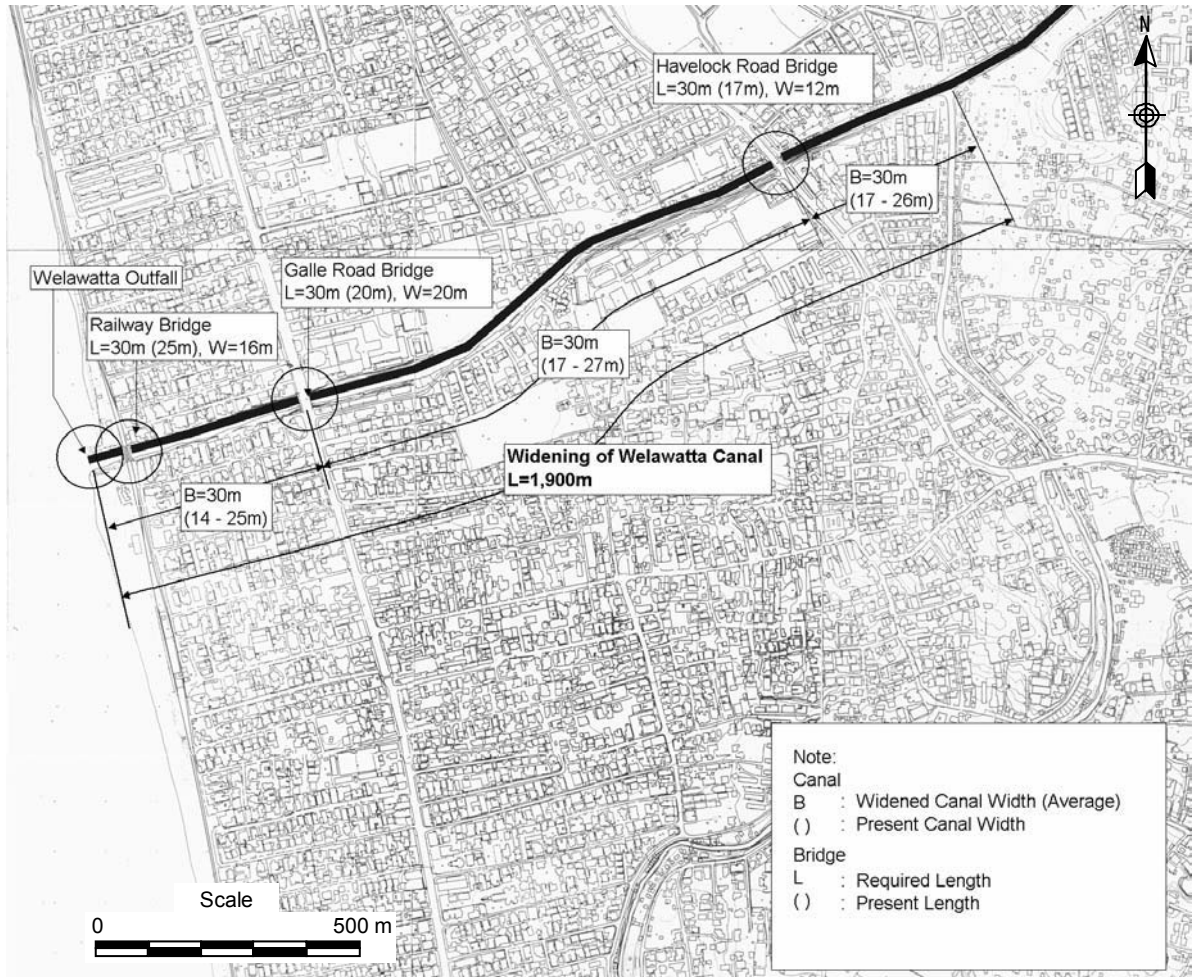
Figure 7.3.6
**General Plan of Restoration of Existing
Mutwal Tunnel**



*The Study on Storm Water Drainage Plan
for the Colombo Metropolitan Region
in the Democratic Socialist Republic of Sri Lanka*

JAPAN INTERNATIONAL COOPERATION AGENCY

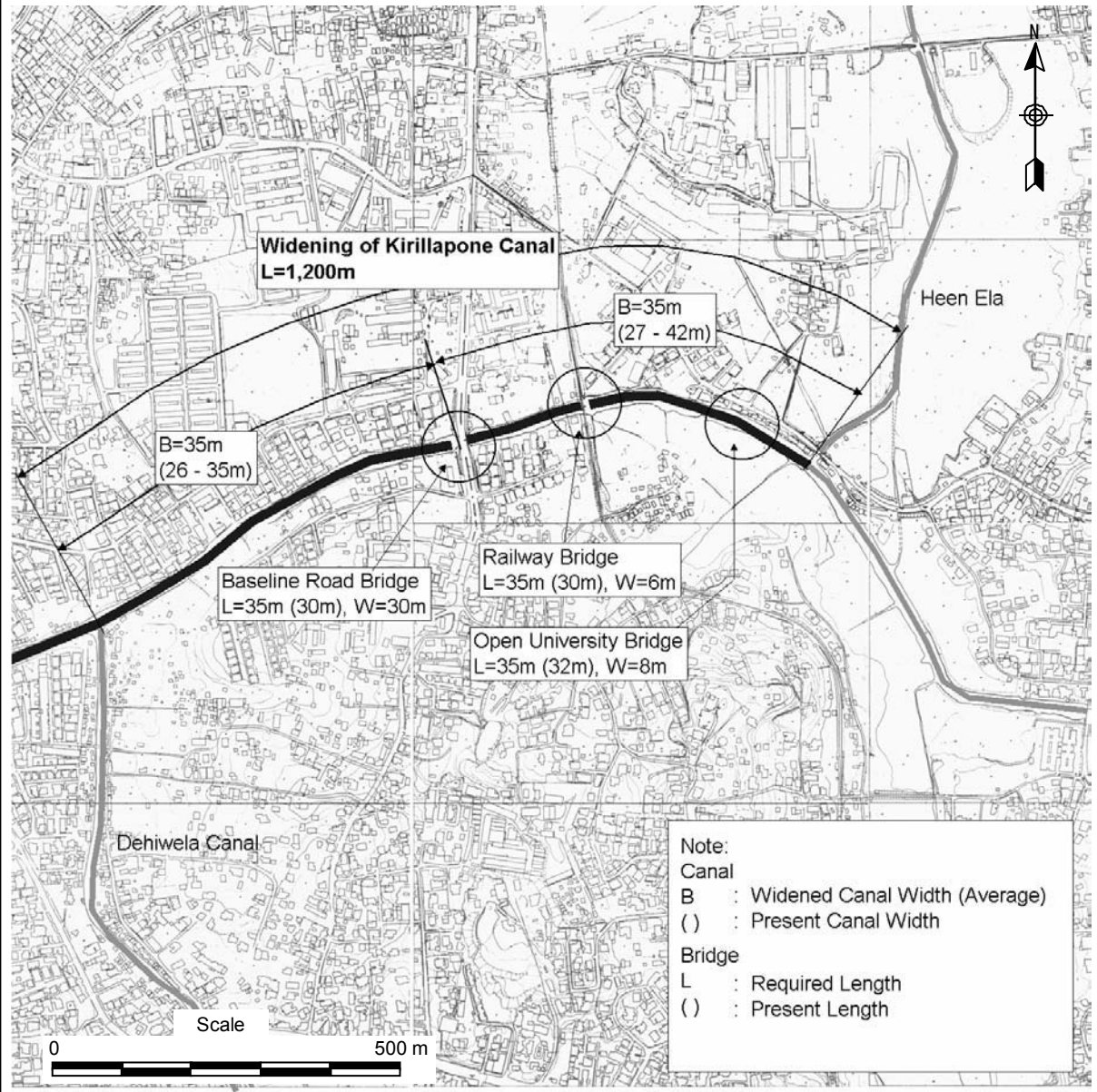
Figure 7.3.7
General Plan of New Mutwal Tunnel



*The Study on Storm Water Drainage Plan
for the Colombo Metropolitan Region
in the Democratic Socialist Republic of Sri Lanka*

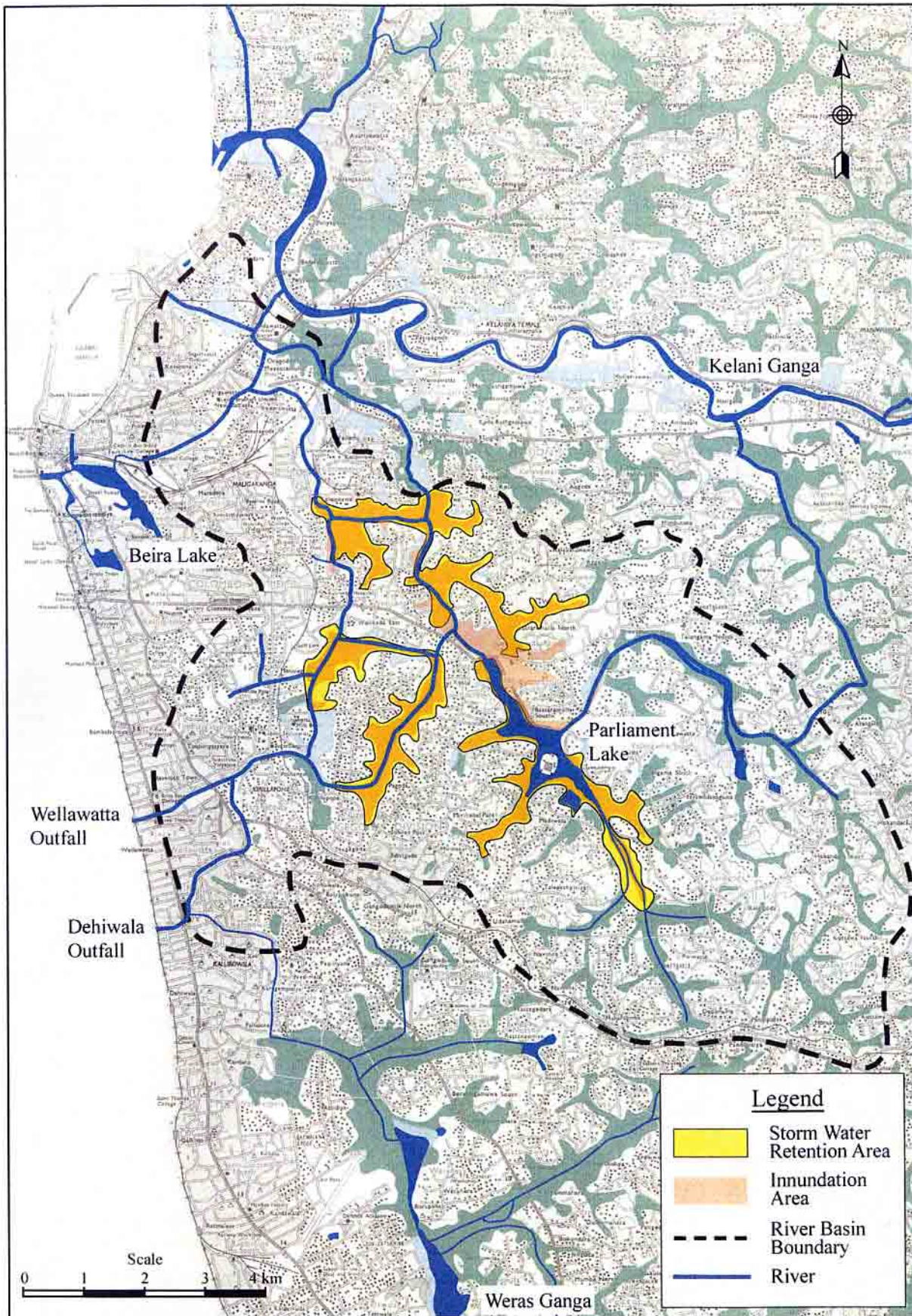
JAPAN INTERNATIONAL COOPERATION AGENCY

Figure 7.3.8
General Plan of Improvement of Welawatta
and Kirillapone Canal (1/2)



Note:
 Canal
 B : Widened Canal Width (Average)
 () : Present Canal Width
 Bridge
 L : Required Length
 () : Present Length

Figure 7.3.8
 General Plan of Improvement of Welawatta
 and Kirillapone Canal (2/2)



*The Study on Storm Water Drainage Plan
for the Colombo Metropolitan Region
in the Democratic Socialist Republic of Sri Lanka*
JAPAN INTERNATIONAL COOPERATION AGENCY

Figure 7.3.9
Retention Area in Greater Colombo Basin