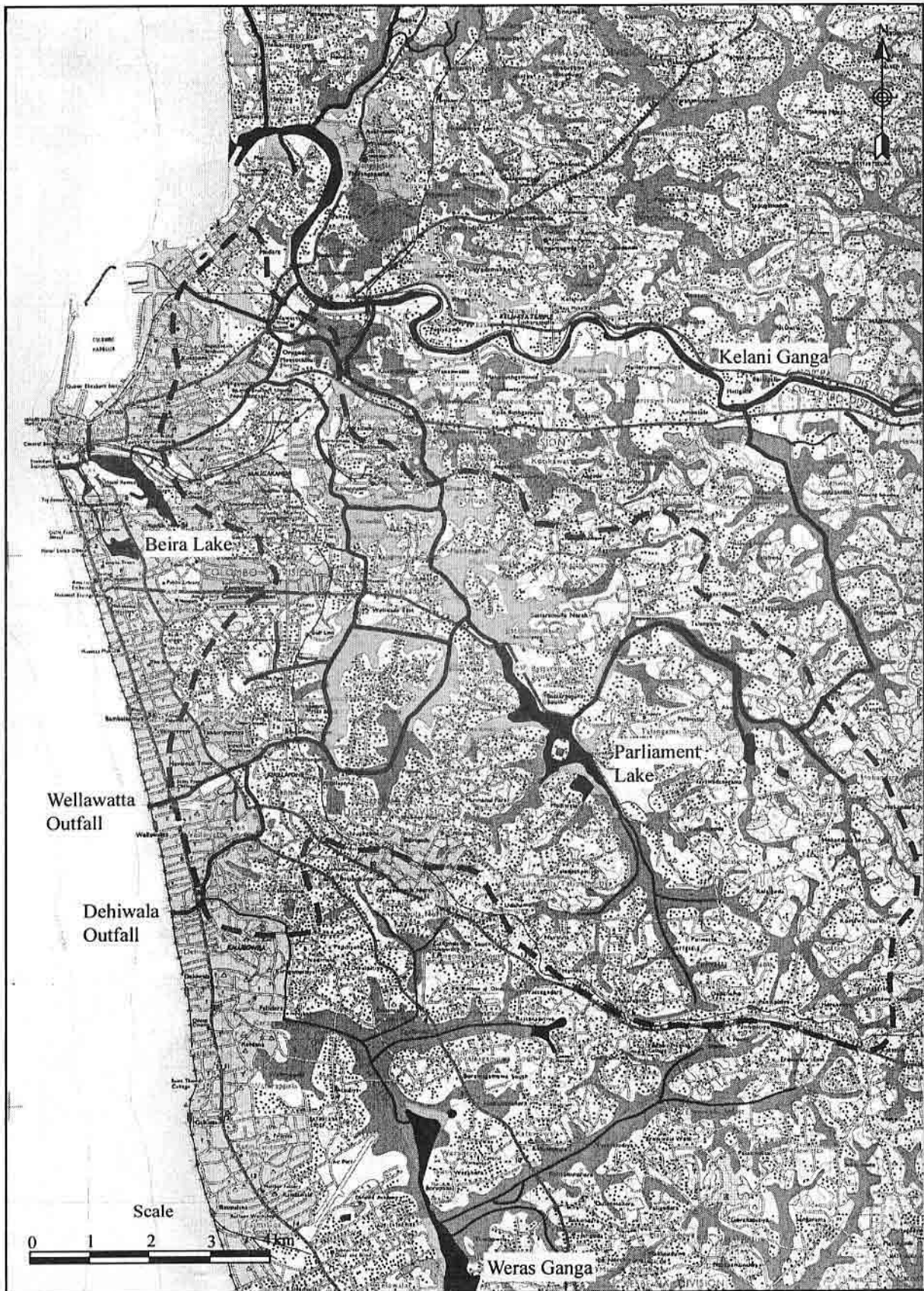


*The Study on Storm Water Drainage Plan
for the Colombo Metropolitan Region
in the Democratic Socialist Republic of Sri Lanka*
JAPAN INTERNATIONAL COOPERATION AGENCY

Figure 1.2.4
River System in Kelani Ganga Basin



*The Study on Storm Water Drainage Plan
for the Colombo Metropolitan Region
in the Democratic Socialist Republic of Sri Lanka*

Figure 1.2.5
River System in Greater Colombo Basin

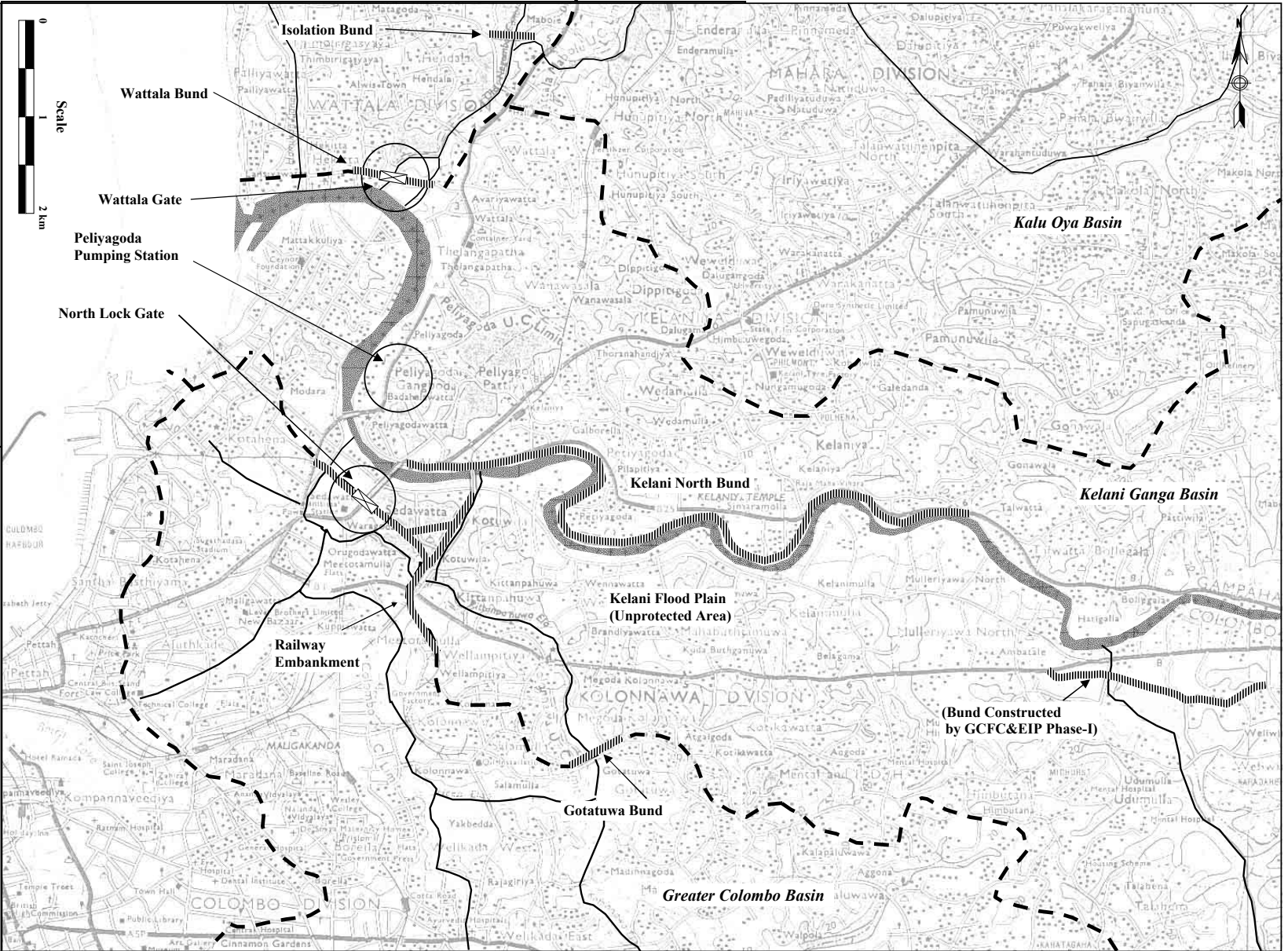
JAPAN INTERNATIONAL COOPERATION AGENCY



*The Study on Storm Water Drainage Plan
for the Colombo Metropolitan Region
in the Democratic Socialist Republic of Sri Lanka*

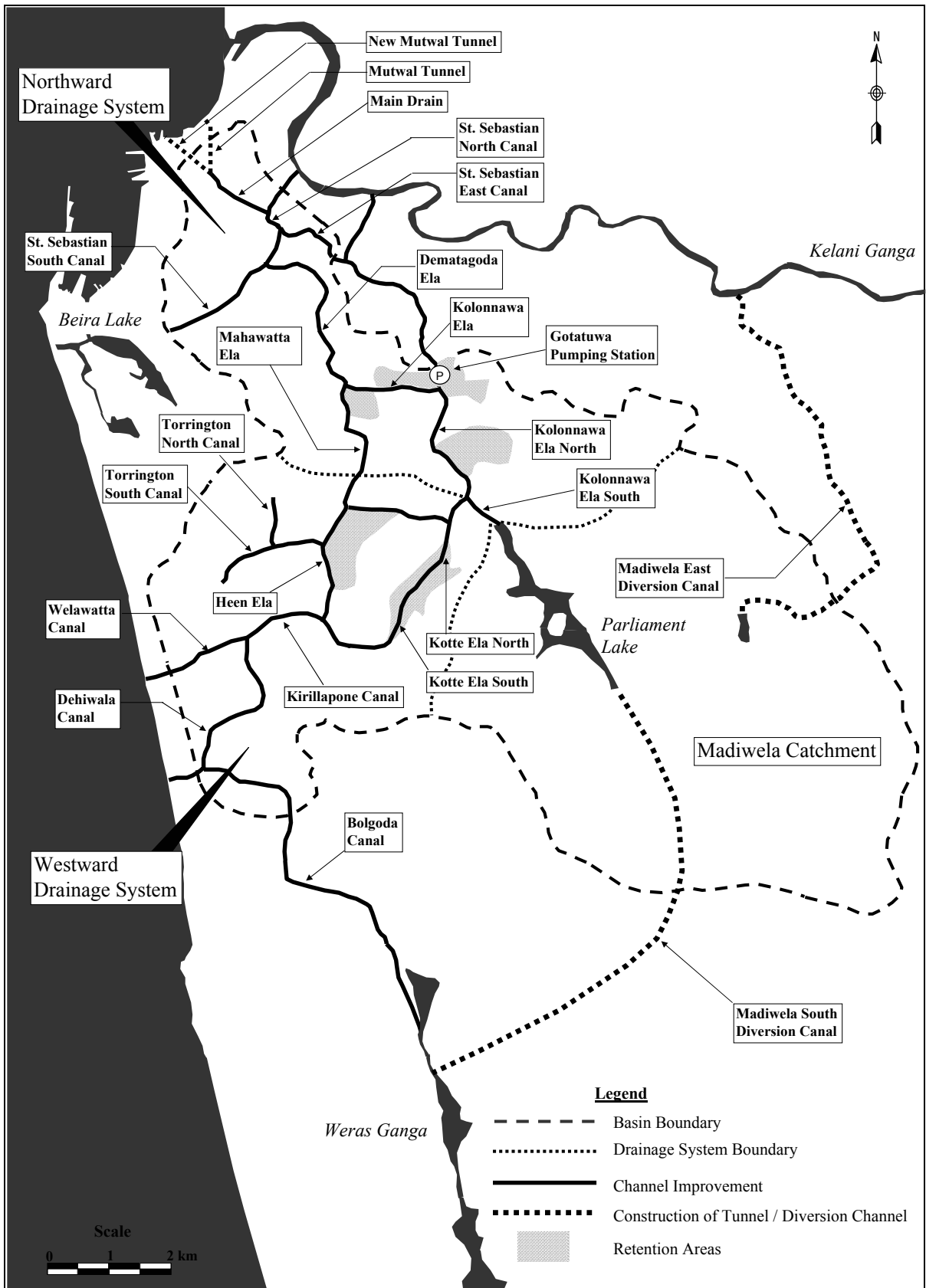
JAPAN INTERNATIONAL COOPERATION AGENCY

Figure 1.2.6
River System in Bolgoda Basin



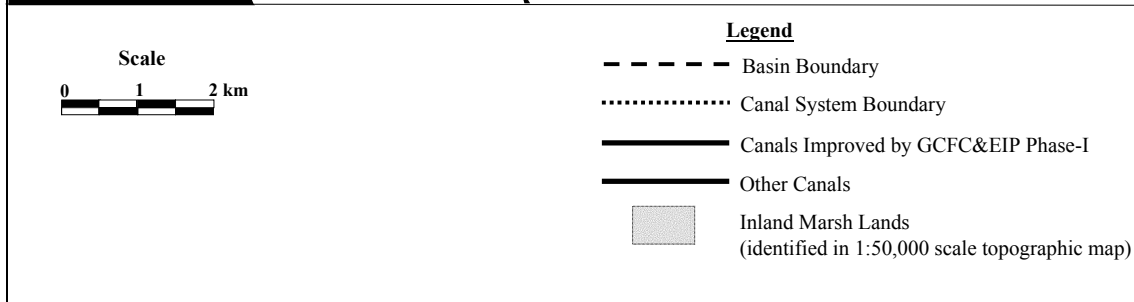
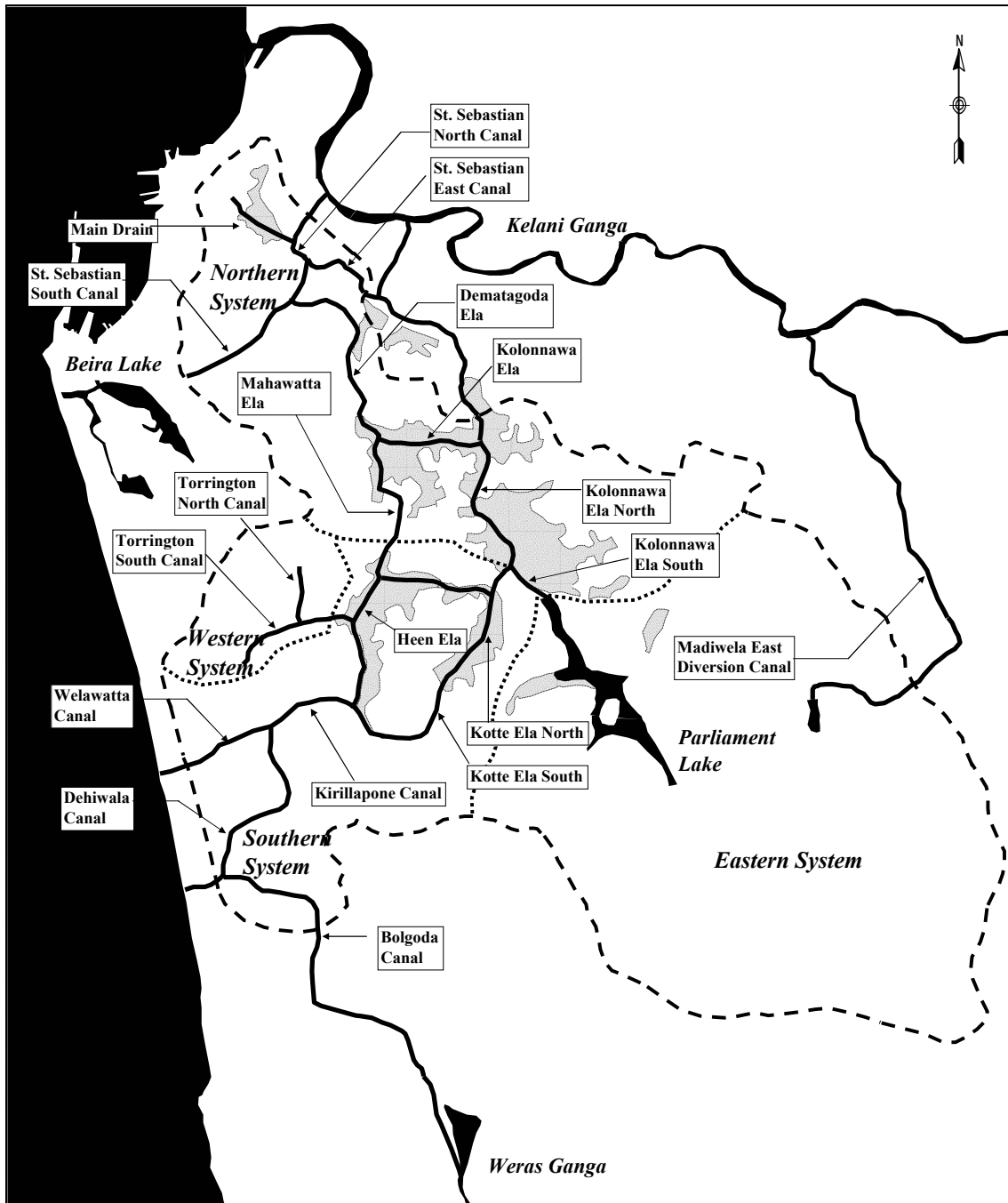
The Study on Storm Water Drainage Plan
for the Colombo Metropolitan Region
in the Democratic Socialist Republic of Sri Lanka
JAPAN INTERNATIONAL COOPERATION AGENCY

Figure 2.1.1
Major Flood Control Facilities in Kelani Ganga
Downstream



The Study on Storm Water Drainage Plan
for the Colombo Metropolitan Region
in the Democratic Socialist Republic of Sri Lanka
JAPAN INTERNATIONAL COOPERATION AGENCY

Figure 2.1.2
Proposed New Capital City Drainage
Project



The Study on Storm Water Drainage Plan for the Colombo Metropolitan Region in the Democratic Socialist Republic of Sri Lanka
JAPAN INTERNATIONAL COOPERATION AGENCY

Figure 2.1.3
Main Canals Improved by GCFC&EIP Phase I

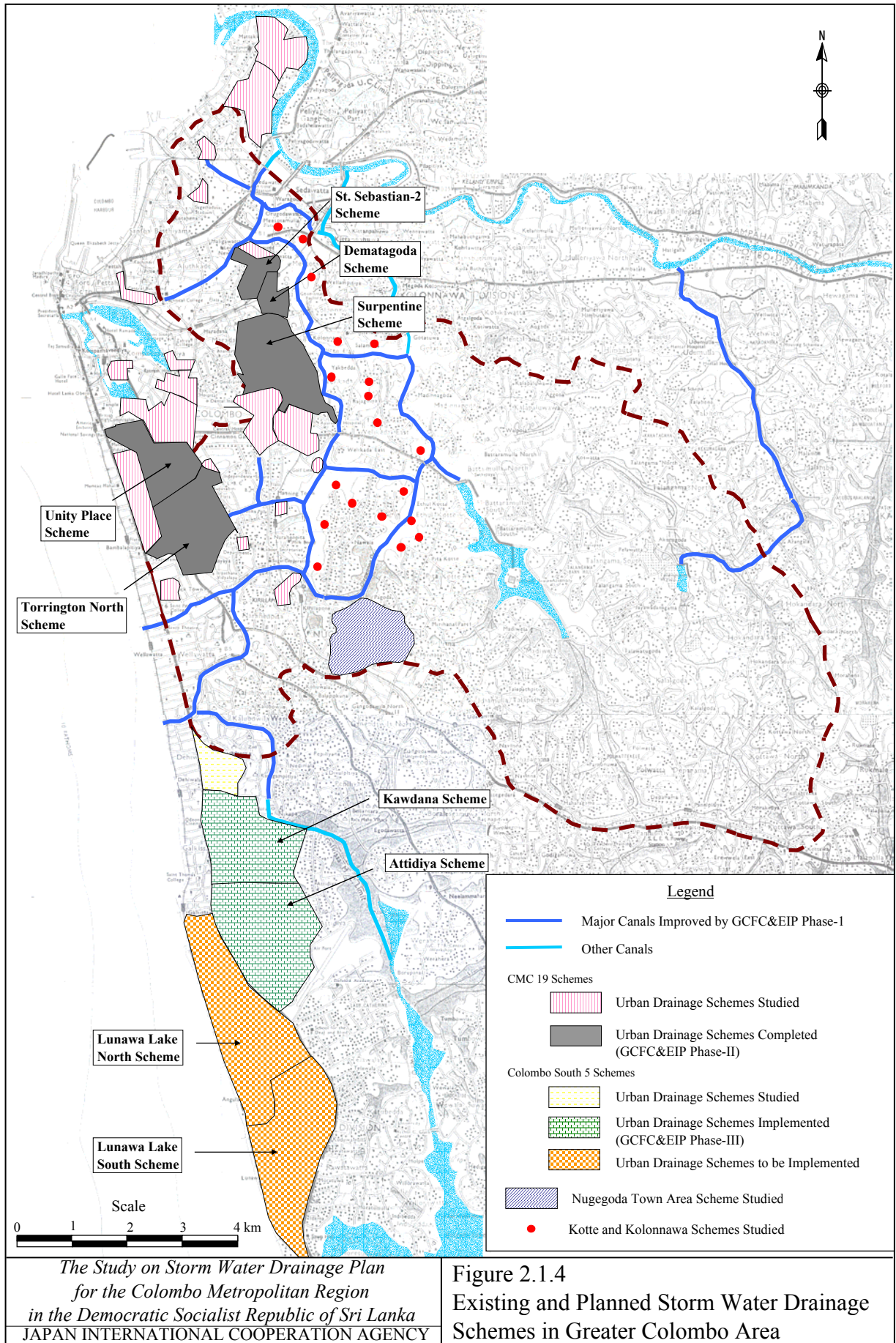


Figure 2.1.4
Existing and Planned Storm Water Drainage Schemes in Greater Colombo Area