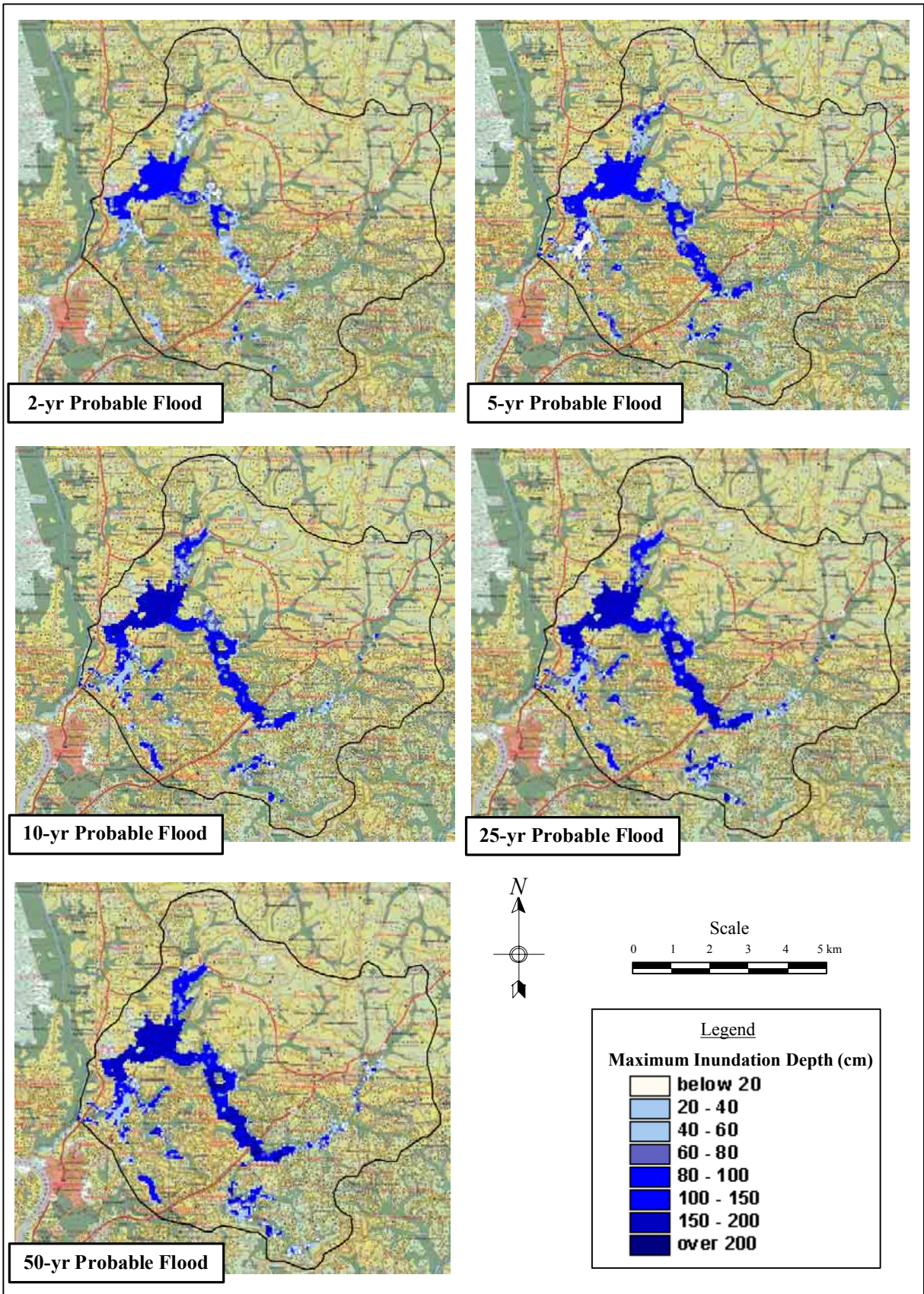


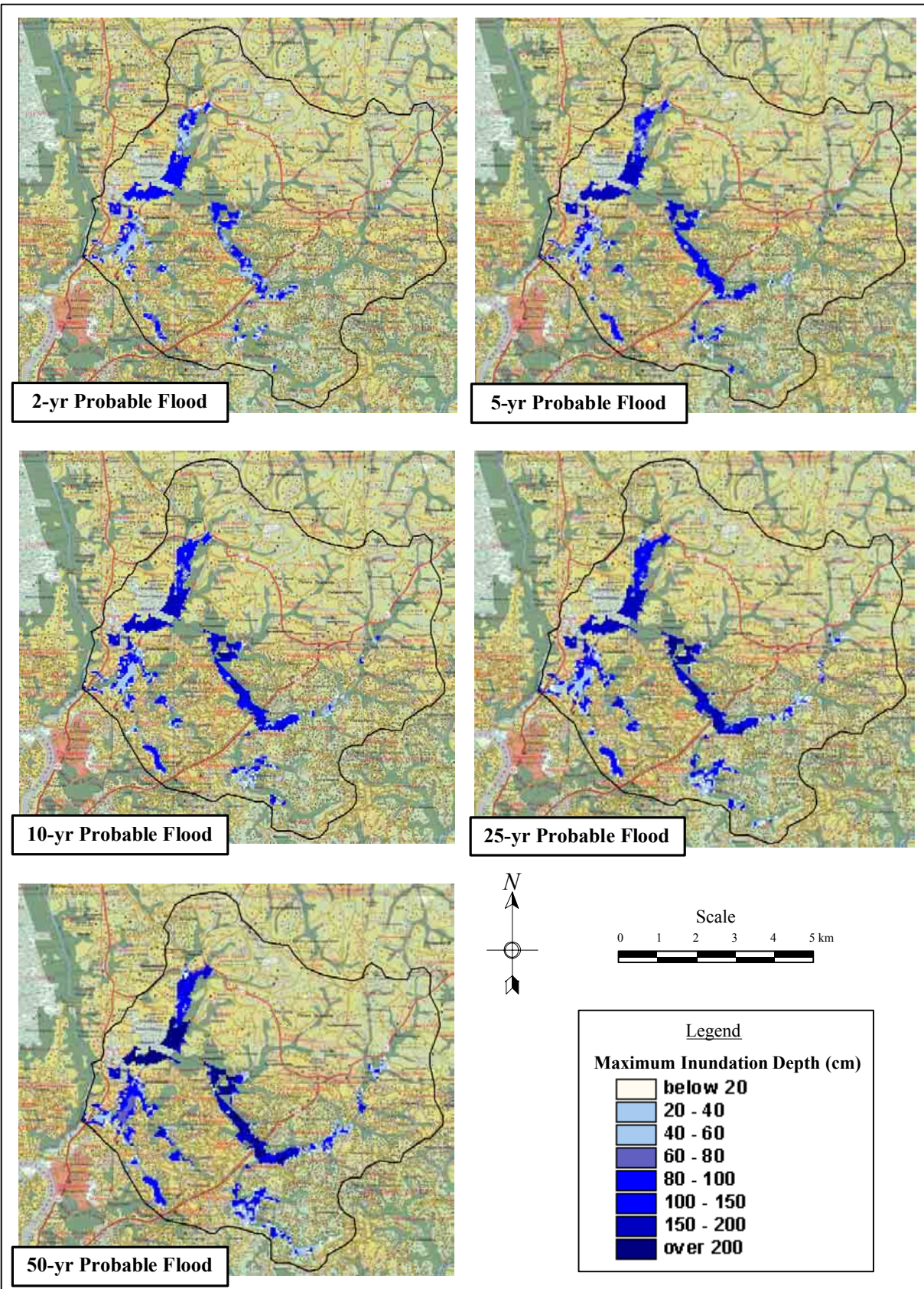
*The Study on Storm Water Drainage Plan
 for the Colombo Metropolitan Region
 in the Democratic Socialist Republic of Sri Lanka*
 JAPAN INTERNATIONAL COOPERATION AGENCY

Figure 4.8.10
 Simulated Flood Inundation Area in the Kalu
 Oya Basin



*The Study on Storm Water Drainage Plan
for the Colombo Metropolitan Region
in the Democratic Socialist Republic of Sri Lanka*
JAPAN INTERNATIONAL COOPERATION AGENCY

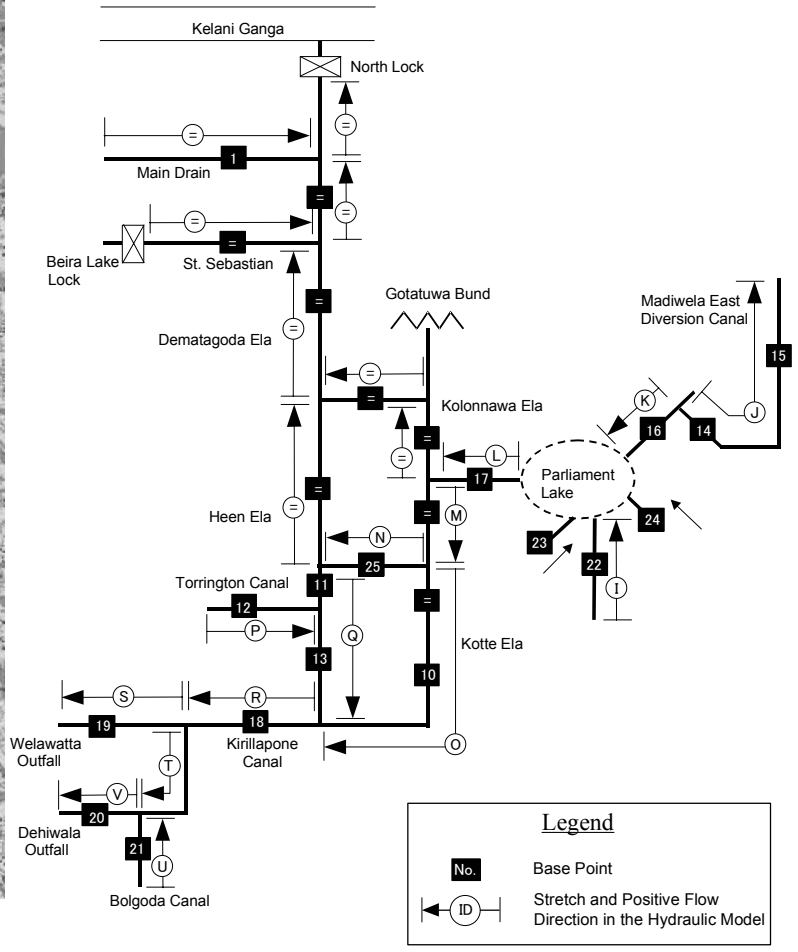
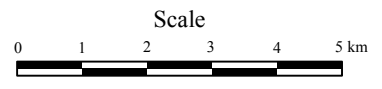
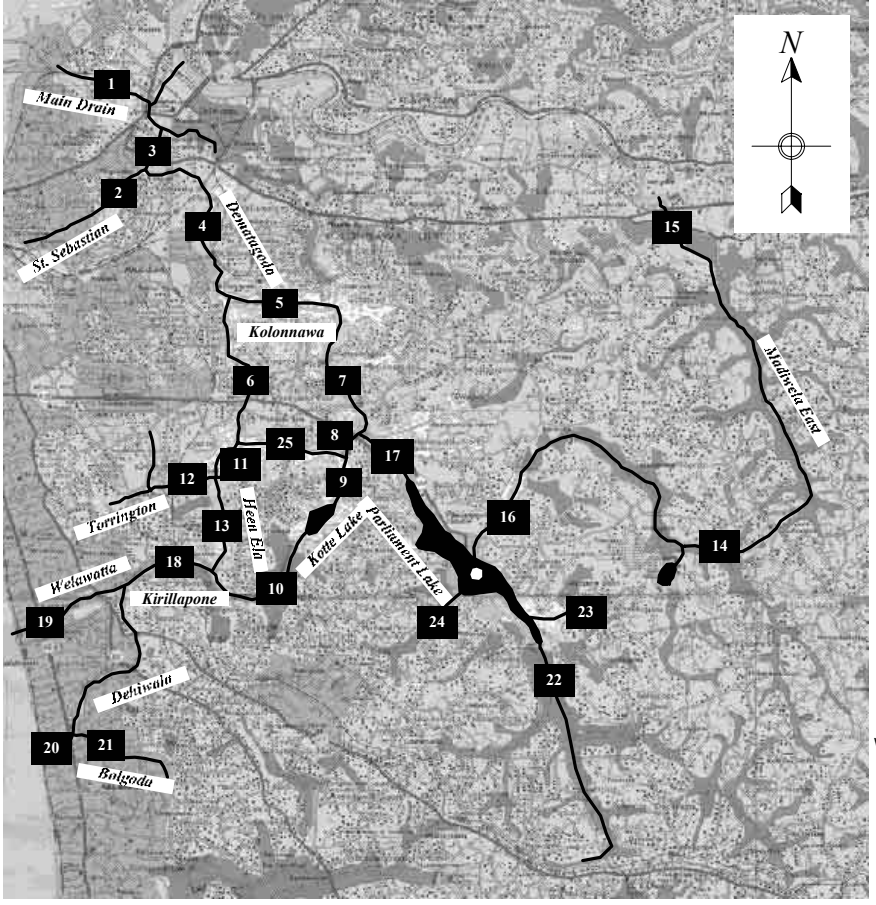
Figure 4.8.11
Flood Inundation Maps of Kalu Oya Basin
(Present Land Use Condition)

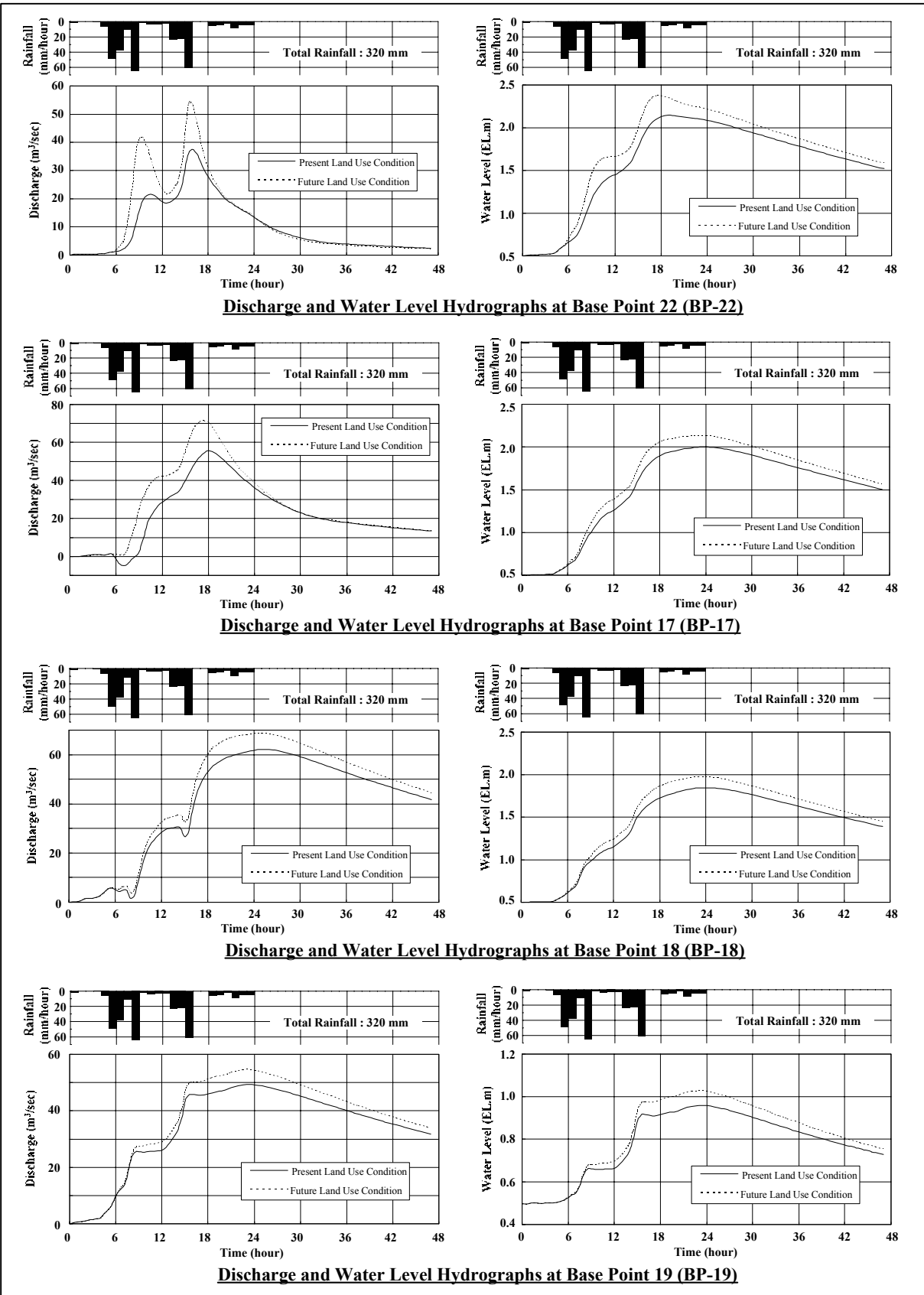


*The Study on Storm Water Drainage Plan
for the Colombo Metropolitan Region
in the Democratic Socialist Republic of Sri Lanka*
JAPAN INTERNATIONAL COOPERATION AGENCY

Figure 4.8.12
Flood Inundation Maps of Kalu Oya Basin
(Future Land Use Condition)

Figure 4.8.13
Base Points in the Greater Colombo Drainage
System

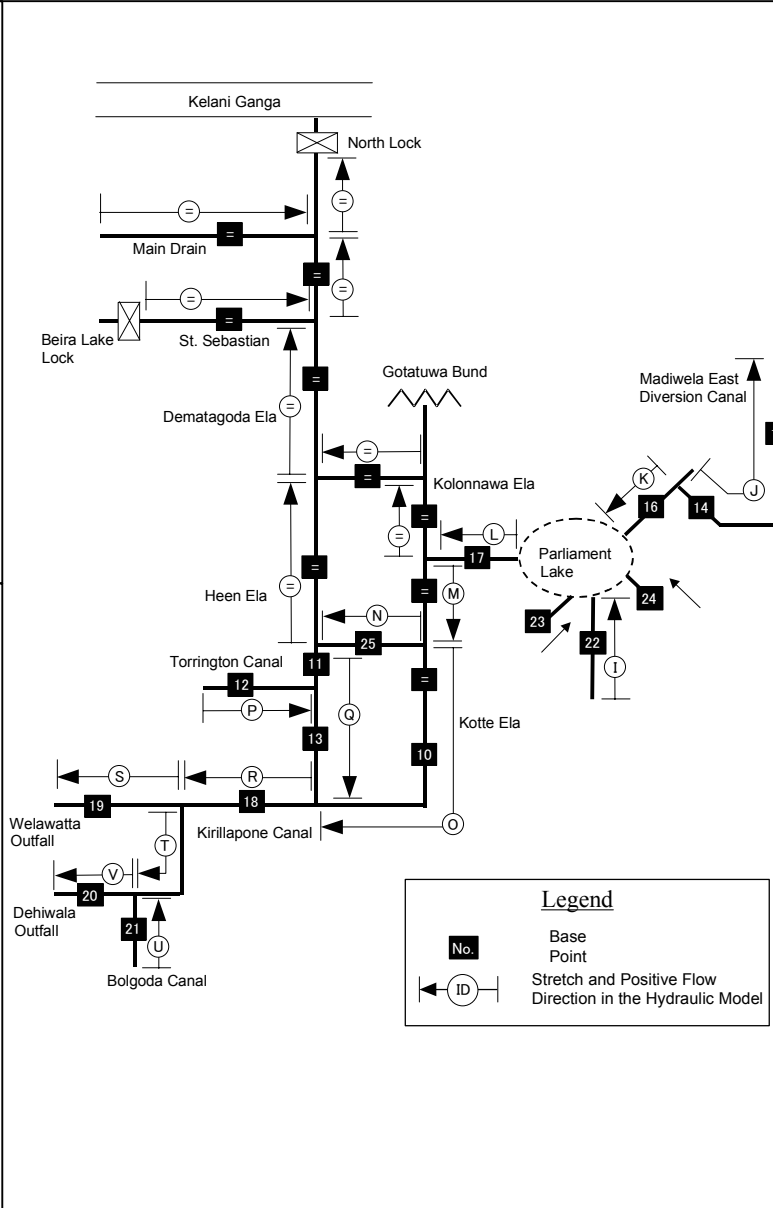




*The Study on Storm Water Drainage Plan
for the Colombo Metropolitan Region
in the Democratic Socialist Republic of Sri Lanka*
JAPAN INTERNATIONAL COOPERATION AGENCY

Figure 4.8.14
Calculated 50-yr Probable Flood Hydrographs
for the Greater Colombo Basin

Figure 4.8.15
 Simulated Maximum Water Level and Discharge
 at Base Points in the Greater Colombo Basin



Legend

No. Base Point

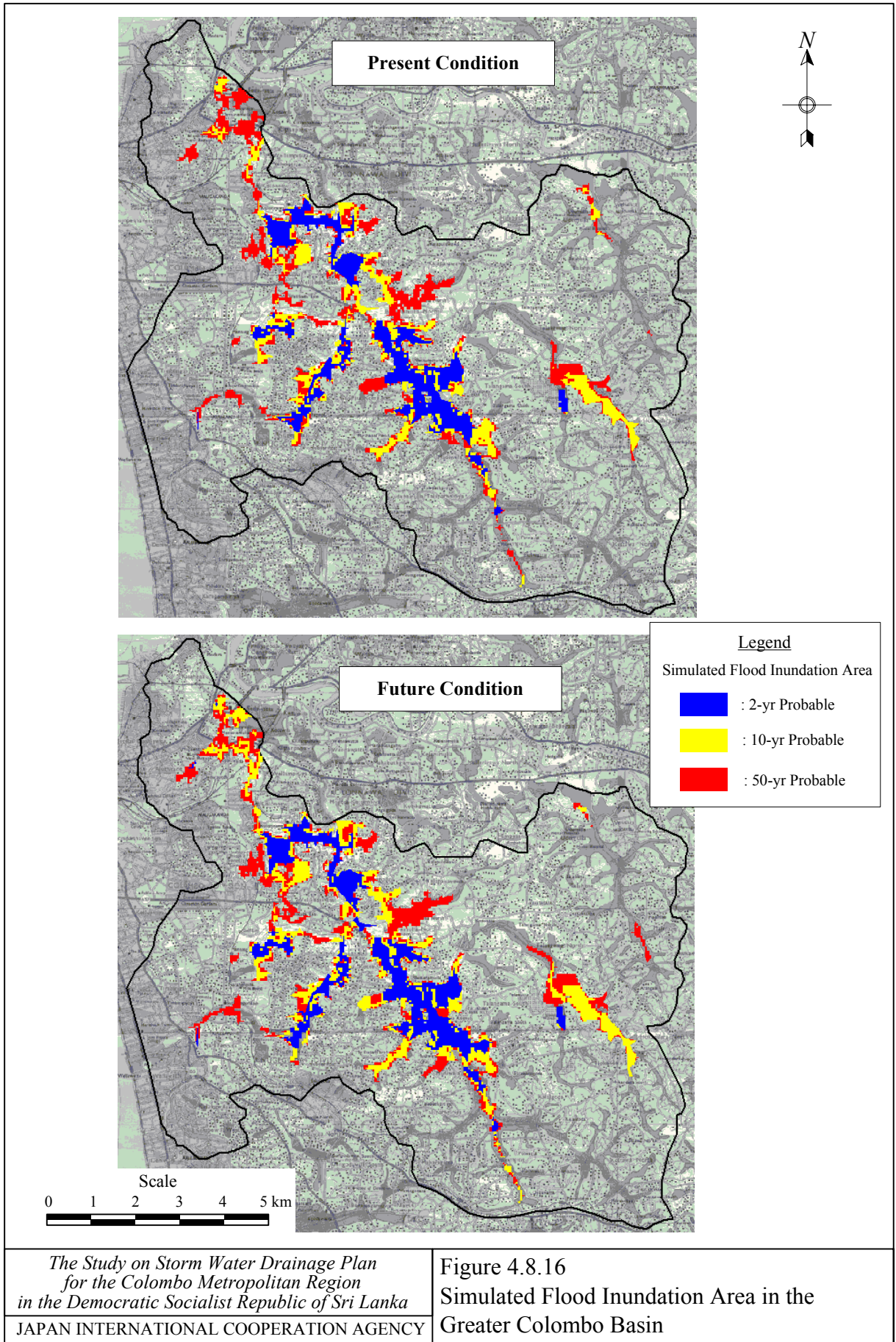
ID Stretch and Positive Flow Direction in the Hydraulic Model

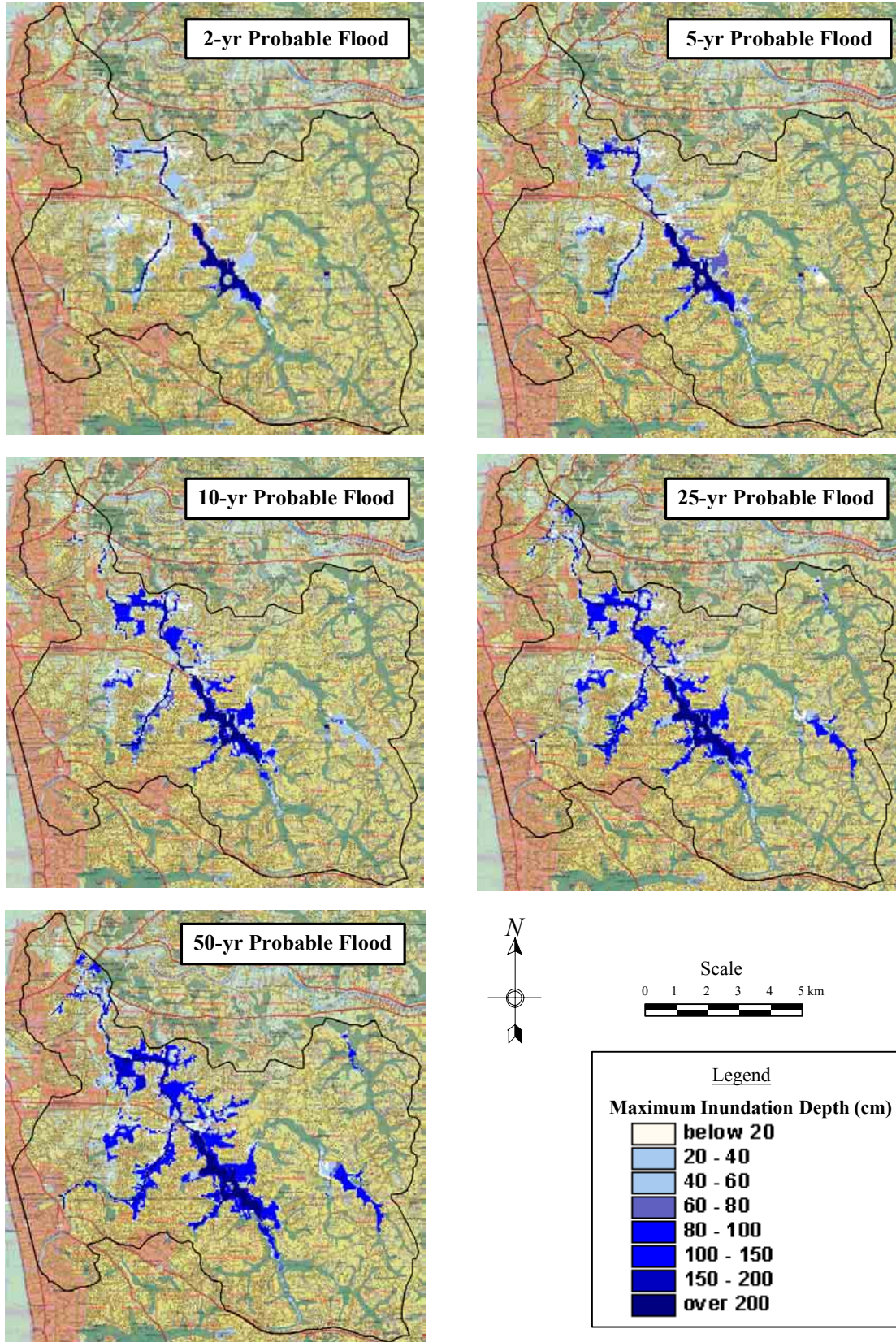
Simulated Maximum Water Level and Discharge at Base Points and Stretches

BP	2-year Probable Flood				5-year Probable Flood				10-year Probable Flood				25-year Probable Flood				50-year Probable Flood			
	PLU		FLU		PLU		FLU		PLU		FLU		PLU		FLU		PLU		FLU	
	H _{max}	Q _{max}	H _{max}	Q _{max}	H _{max}	Q _{max}	H _{max}	Q _{max}	H _{max}	Q _{max}	H _{max}	Q _{max}	H _{max}	Q _{max}	H _{max}	Q _{max}	H _{max}	Q _{max}	H _{max}	Q _{max}
1	0.87	0.9	0.94	0.9	1.21	1.6	1.31	1.6	1.43	2.2	1.54	2.2	1.73	3.0	1.86	2.9	2.01	3.7	2.15	3.7
2	0.86	2.2	0.94	2.3	1.20	4.4	1.30	4.6	1.42	6.0	1.53	6.2	1.73	8.6	1.86	8.9	2.00	11.0	2.14	11.2
3	0.86	-2.0	0.94	-1.7	1.20	-2.3	1.30	-2.7	1.42	-2.9	1.53	3.9	1.73	4.1	1.86	6.6	2.00	6.6	2.14	8.6
4	0.86	-5.0	0.93	-4.5	1.20	-8.4	1.30	-8.1	1.42	-11.1	1.53	-10.7	1.72	-15.2	1.85	-14.8	2.00	-19.4	2.14	-18.9
5	0.86	-3.9	0.93	-2.4	1.20	-6.3	1.30	-4.5	1.41	-7.9	1.53	-5.7	1.72	-10.4	1.85	-8.3	1.99	-13.2	2.13	-11.3
6	0.85	-3.5	0.93	-4.0	1.19	-5.5	1.29	-6.2	1.41	-6.9	1.52	-7.7	1.71	-9.1	1.84	-10.1	1.98	-11.3	2.12	-12.4
7	0.86	-3.2	0.93	-3.3	1.19	-4.2	1.29	6.9	1.41	-5.1	1.53	9.0	1.72	8.0	1.85	12.6	1.99	10.5	2.13	16.0
8	0.84	12.9	0.92	14.7	1.18	20.5	1.28	23.7	1.39	26.2	1.51	31.3	1.70	36.1	1.82	43.6	1.96	46.4	2.10	56.8
9	0.83	9.2	0.90	10.5	1.16	14.8	1.26	18.2	1.37	19.8	1.48	24.2	1.68	28.0	1.80	33.9	1.94	36.3	2.08	43.8
10	0.82	9.4	0.89	10.6	1.15	14.5	1.24	16.3	1.36	18.2	1.47	20.3	1.66	23.9	1.79	26.9	1.93	29.6	2.07	33.9
11	0.82	5.4	0.90	6.1	1.15	8.4	1.25	9.3	1.36	10.5	1.47	11.7	1.66	13.7	1.79	15.1	1.93	16.7	2.07	18.4
12	0.82	3.3	0.89	3.7	1.14	7.1	1.24	7.7	1.35	9.9	1.46	10.7	1.65	14.2	1.78	15.3	1.92	18.3	2.06	19.6
13	0.80	9.7	0.87	10.8	1.12	14.9	1.21	16.5	1.32	18.6	1.43	20.7	1.62	24.5	1.74	27.3	1.88	30.5	2.02	33.9
14	4.50	2.9	4.78	5.1	5.02	7.4	5.34	11.1	5.32	10.9	5.66	15.5	5.71	16.3	6.09	22.0	6.03	21.5	6.41	27.2
15	1.24	7.3	1.61	14.4	1.77	18.3	2.23	30.8	2.10	26.9	2.57	42.1	2.50	40.3	3.05	60.4	2.86	53.5	3.43	77.9
16	0.88	2.2	0.96	3.8	1.24	5.3	1.34	7.9	1.46	7.7	1.58	11.1	1.78	11.5	1.93	15.9	2.05	15.2	2.24	20.4
17	0.86	11.3	0.93	15.1	1.20	21.4	1.30	29.6	1.42	29.6	1.53	39.2	1.72	42.7	1.85	55.4	1.99	55.9	2.13	71.8
18	0.78	19.9	0.85	22.1	1.09	30.4	1.18	33.9	1.29	38.1	1.40	42.4	1.58	50.2	1.70	55.8	1.84	62.4	1.97	69.3
19	0.54	16.4	0.56	18.1	0.62	24.7	0.64	27.3	0.68	30.7	0.71	33.9	0.79	40.1	0.84	44.5	0.91	49.7	0.98	54.9
20	0.53	7.4	0.53	7.8	0.54	12.9	0.54	13.6	0.59	16.9	0.61	17.8	0.71	23.0	0.74	24.3	0.83	29.0	0.87	30.8
21	0.56	1.2	0.56	1.2	0.73	2.3	0.74	2.3	0.85	3.2	0.86	3.2	1.03	4.5	1.05	4.5	1.19	5.8	1.21	5.8
22	-	-	-	-	-	-	-	-	-	-	-	-	-	-	-	-	-	-	-	-
23	-	-	-	-	-	-	-	-	-	-	-	-	-	-	-	-	-	-	-	-
24	-	-	-	-	-	-	-	-	-	-	-	-	-	-	-	-	-	-	-	-
25	0.83	4.2	0.90	4.8	1.16	6.6	1.26	7.4	1.38	8.4	1.49	9.9	1.68	11.6	1.80	13.9	1.94	15.1	2.08	18.5

Stretch	2-year Flood Discharge (m ³ /sec)		5-year Flood Discharge (m ³ /sec)		10-year Flood Discharge (m ³ /sec)		25-year Flood Discharge (m ³ /sec)		50-year Flood Discharge (m ³ /sec)	
	PLU	FLU	PLU	FLU	PLU	FLU	PLU	FLU	PLU	FLU
A	3.4	3.3	6.3	6.3	8.5	8.4	11.6	11.5	14.5	14.4
B	-0.1	-0.1	-0.3	-0.3	-0.4	-0.3	-0.5	-0.5	-0.7	-0.7
C	-2.0	-1.7	-2.3	-2.7	-3.0	4.1	4.2	6.6	6.6	8.8
D	3.0	3.1	6.0	6.3	8.3	8.5	11.7	12.1	15.0	15.3
E	-5.4	-5.2	-9.3	-9.5	-12.6	-12.6	-17.4	-17.6	-22.4	-22.8
F	-6.8	-6.4	-13.0	-12.7	-17.7	-16.9	-24.3	-23.5	-30.8	-29.7
G	-3.8	-4.3	-5.9	-6.7	-7.5	-8.3	-10.7	-11.5	-14.0	-15.0
H	-3.9	-3.7	-5.4	9.9	7.9	14.0	12.8	20.7	17.8	27.2
I	5.9	10.7	13.5	22.1	19.5	30.5	29.0	42.6	37.9	54.5
J	8.8	17.8	22.0	38.2	32.5	52.0	48.5	74.5	64.6	96.5
K	2.2	3.8	5.3	7.9	7.7	11.1	11.5	15.9	15.2	20.4
L	11.7	15.7	22.3	30.8	30.9	40.7	44.5	57.5	58.2	74.2
M	12.9	14.7	20.6	23.8	26.3	31.4	36.2	43.8	46.6	57.0
N	4.6	5.0	7.0	7.8	8.9	10.0	11.9	14.0	15.2	18.6
O	10.1	11.1	15.3	18.8	20.5	25.1	28.9	35.0	37.6	45.1
P	3.4	3.8	7.3	7.9	10.2	11.0	14.6	15.7	18.9	20.1
Q	9.8	11.0	15.1	16.7	18.9	21.0	24.9	28.5	31.8	37.2
R	20.2	22.5	30.8	34.3	38.6	42.9	50.8	56.5	63.2	70.1
S	16.5	18.2	24.7	27.4	30.8	34.0	40.2	44.6	49.8	55.1
T	5.9	6.4	9.7	10.4	12.4	13.4	16.7	18.0	20.9	22.6
U	1.5	1.5	2.9	2.9	4.0	4.0	5.6	5.6	7.2	7.2
V	7.5	7.9	12.9	13.6	16.9	17.8	23.0	24.3	29.0	30.8

BP : Base Point, PLU : Present Land Use Condition, FLU : Future Land Use Condition,
 H_{max} : Maximum Water Level (EL.m), Q_{max} : Maximum Discharge (m³/sec)





*The Study on Storm Water Drainage Plan
for the Colombo Metropolitan Region
in the Democratic Socialist Republic of Sri Lanka*

JAPAN INTERNATIONAL COOPERATION AGENCY

Figure 4.8.17
Flood Inundation Maps of Greater Colombo
Basin (Present Land Use Condition)