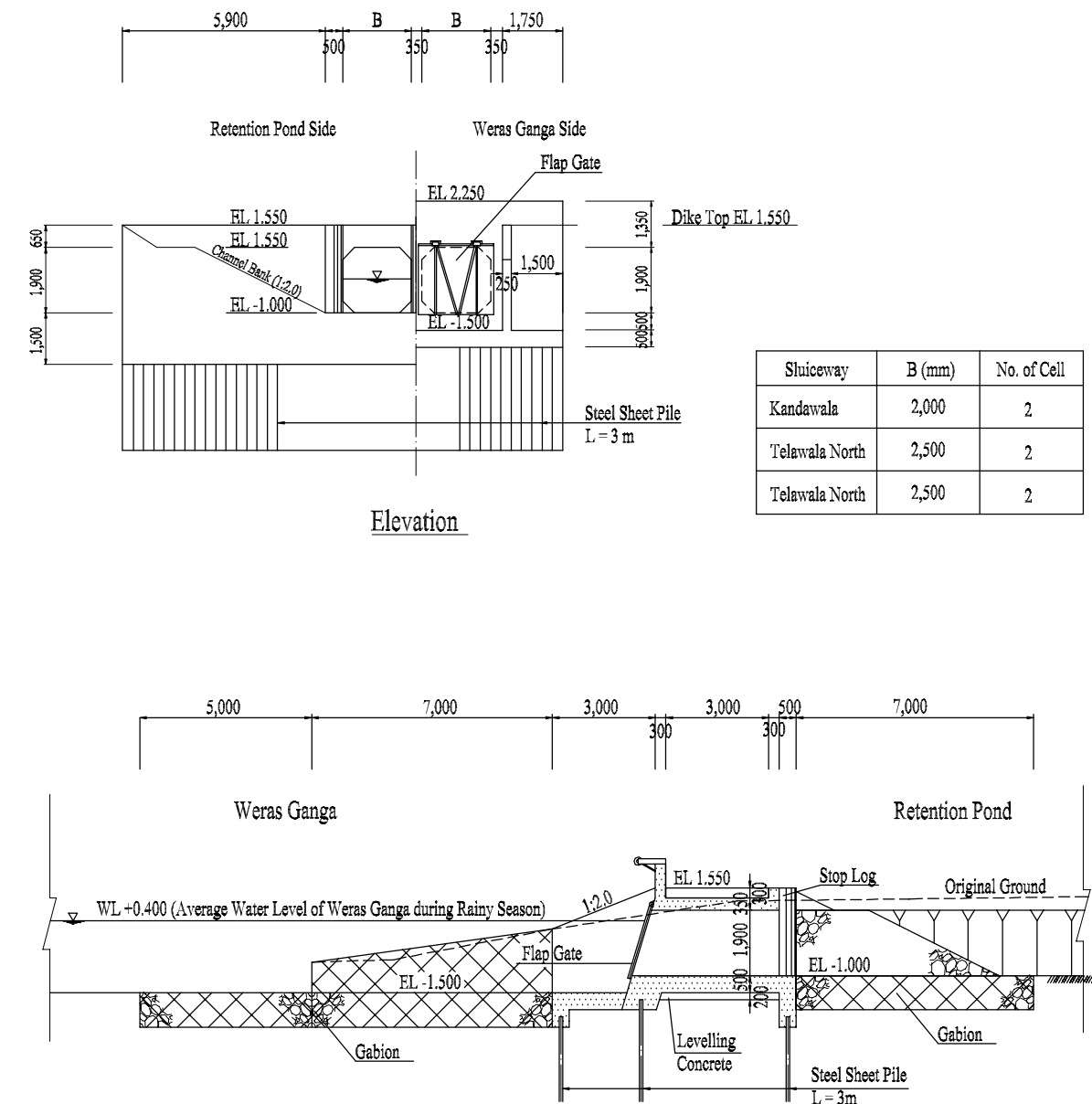
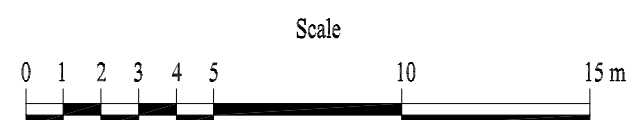


Plan

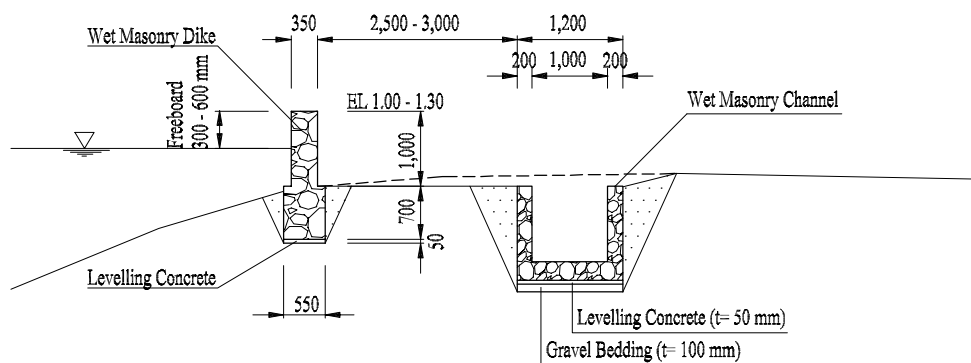


Section A-A

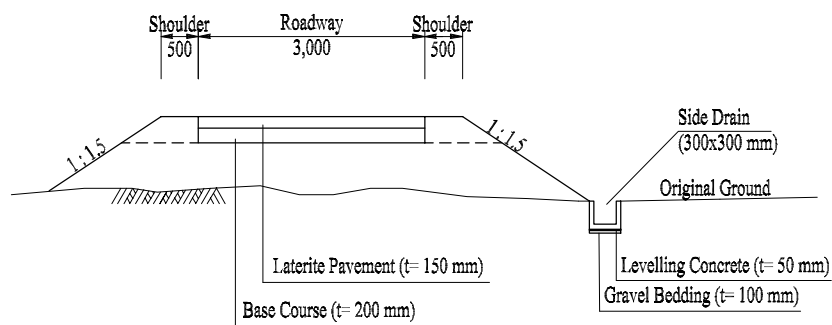


The Study on Storm Water Drainage Plan  
for the Colombo Metropolitan Region  
in the Democratic Socialist Republic of Sri Lanka  
JAPAN INTERNATIONAL COOPERATION AGENCY

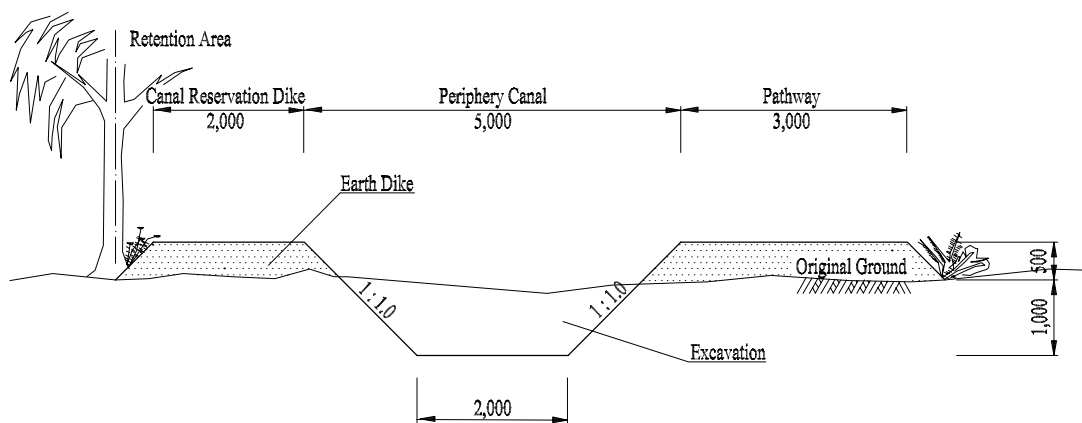
Drawing 25  
Typical Design of Outlet Sluiceway  
for Retention Pond



Wet Masonry Dike



Maintenance Road



Periphery Canal in Storm Water Retention Area



*The Study on Storm Water Drainage Plan  
for the Colombo Metropolitan Region  
in the Democratic Socialist Republic of Sri Lanka*

JAPAN INTERNATIONAL COOPERATION AGENCY

**Drawing 26**

**Typical Cross Sections of Proposed Wet Masonry  
Dike, Maintenance Road and Periphery Canal**