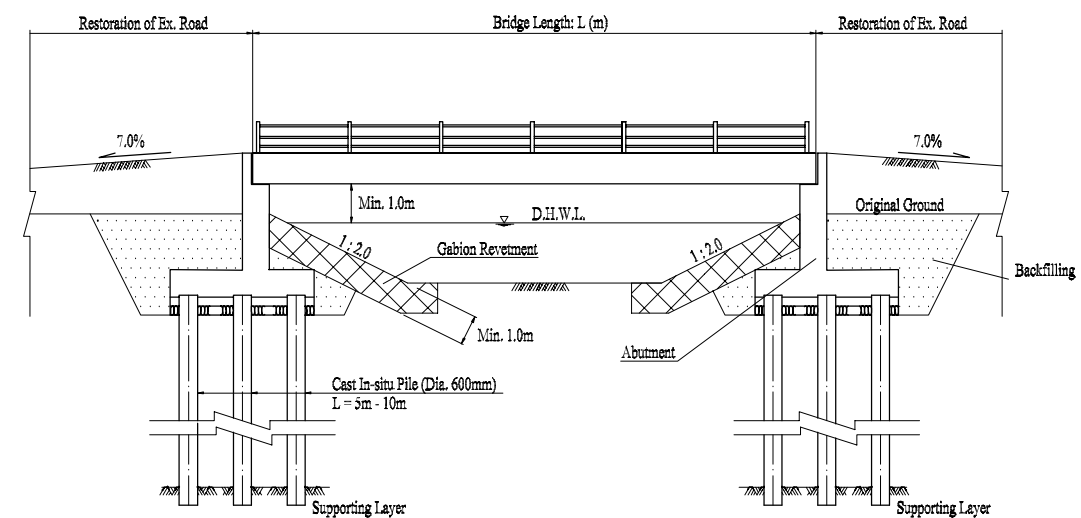
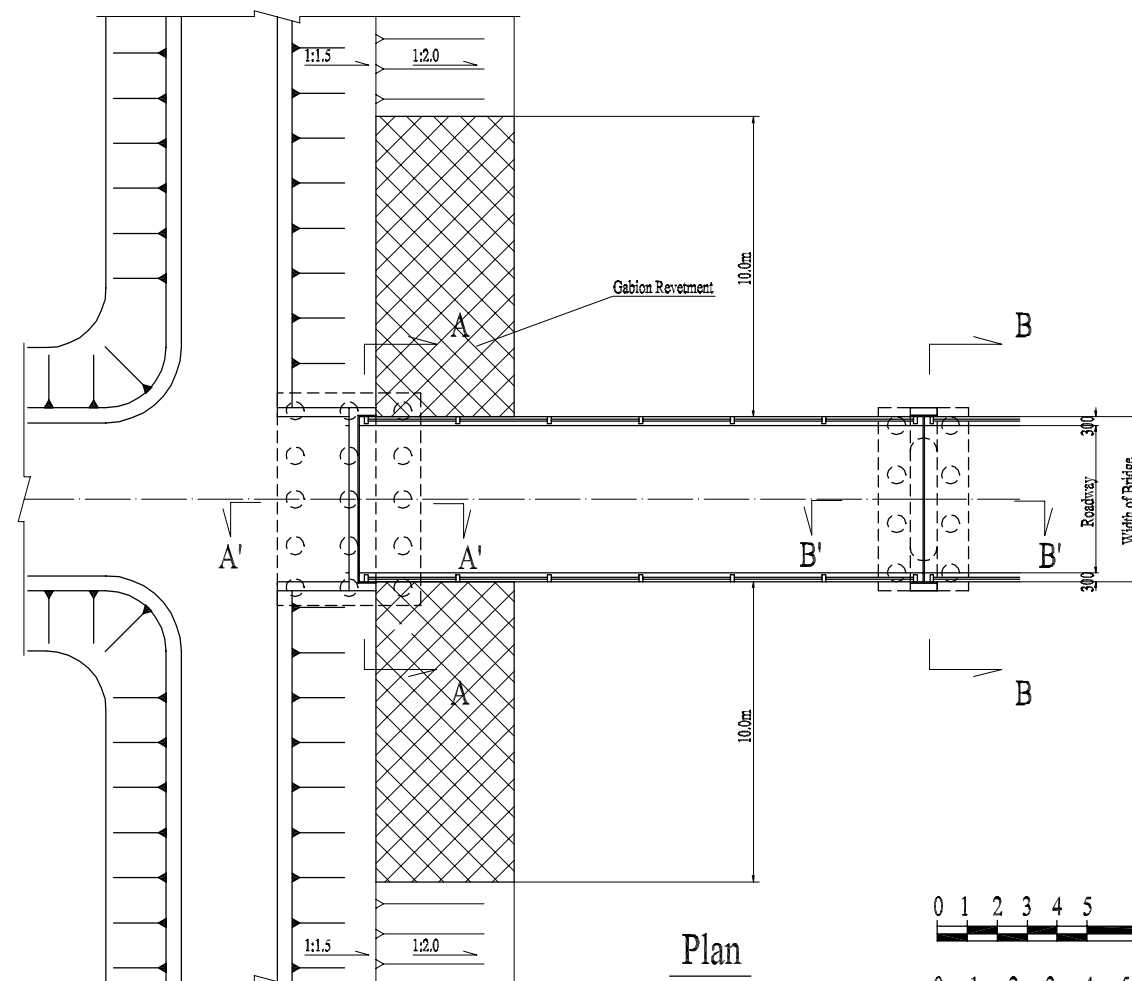


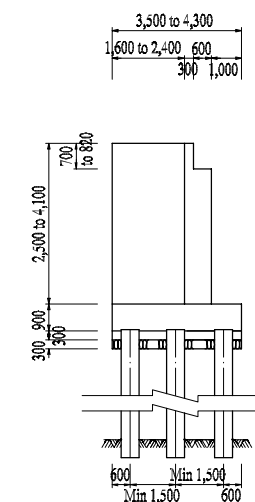
Profile of 2-Span Bridge  
Scale A



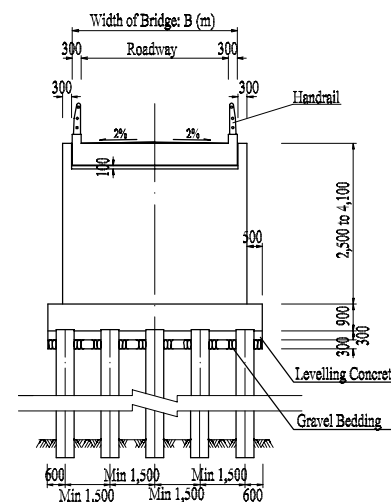
Profile of 1-Span Bridge  
Scale A



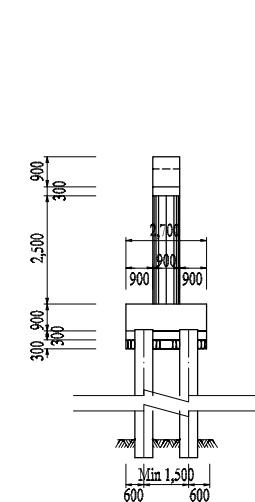
Plan  
Scale B



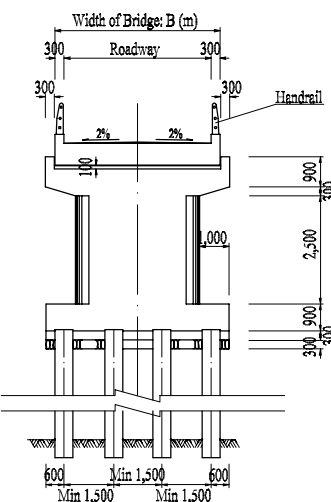
Section A' - A'  
Scale B



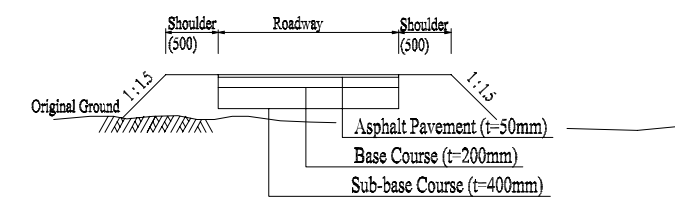
Section A - A  
Scale B



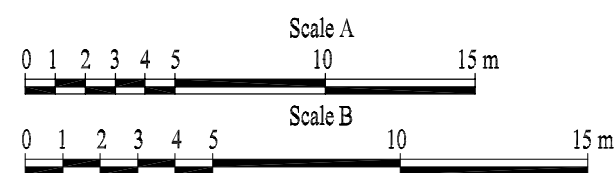
Section B' - B'  
Scale B



Section B - B  
Scale B

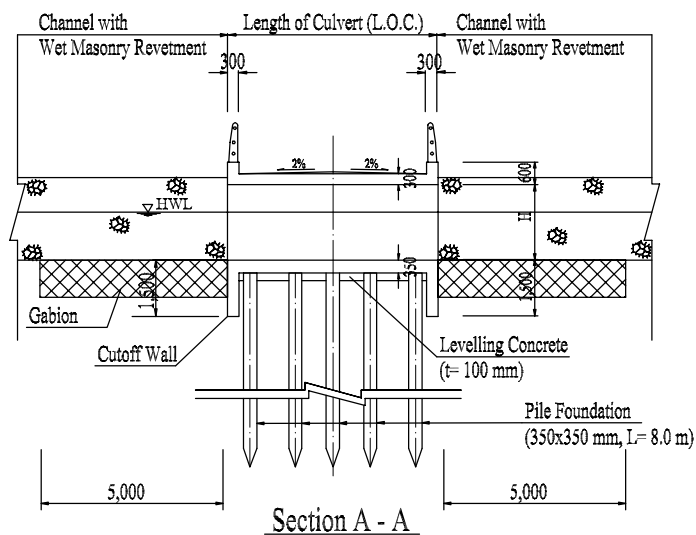
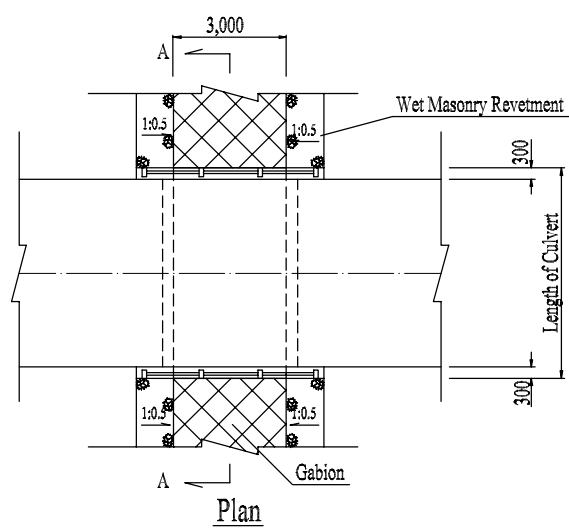
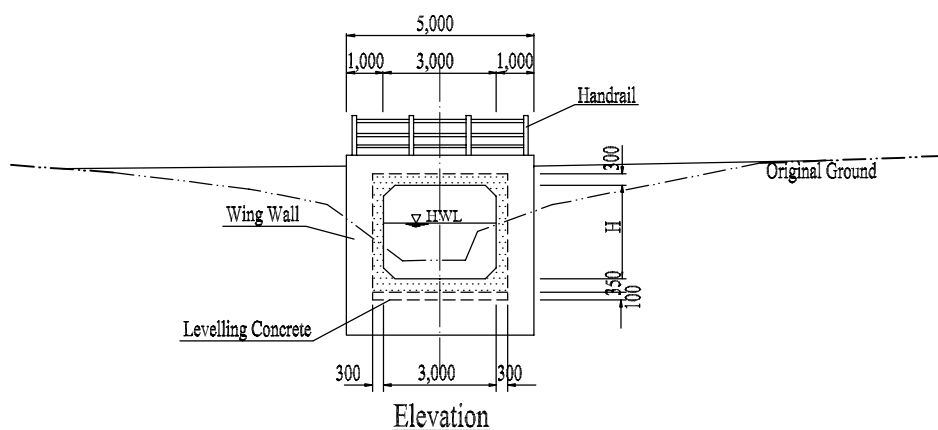


Restoration of Existing Road  
No Scale

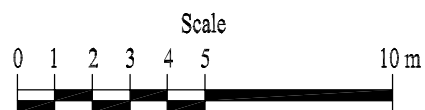


The Study on Storm Water Drainage Plan  
for the Colombo Metropolitan Region  
in the Democratic Socialist Republic of Sri Lanka  
JAPAN INTERNATIONAL COOPERATION AGENCY

Drawing 23  
Typical Design of Proposed Bridge



Code	HWL (m MSL)	Channel Bed (m MSL)	H (m)	Width of Road (m)	L.O.C. (m)
D6	4.002	2.348	2,100	4.0	4.6
D7	4.238	3.288	1,800	5.0	5.6



*The Study on Storm Water Drainage Plan  
for the Colombo Metropolitan Region  
in the Democratic Socialist Republic of Sri Lanka*

JAPAN INTERNATIONAL COOPERATION AGENCY

**Drawing 24**  
**Typical Design of Proposed Culvert of**  
**Delkanda Ela**