

*The Study on Storm Water Drainage Plan  
for the Colombo Metropolitan Region  
in the Democratic Socialist Republic of Sri Lanka*

JAPAN INTERNATIONAL COOPERATION AGENCY

**Figure 15.12**  
**Bolgoda Canal Scheme**

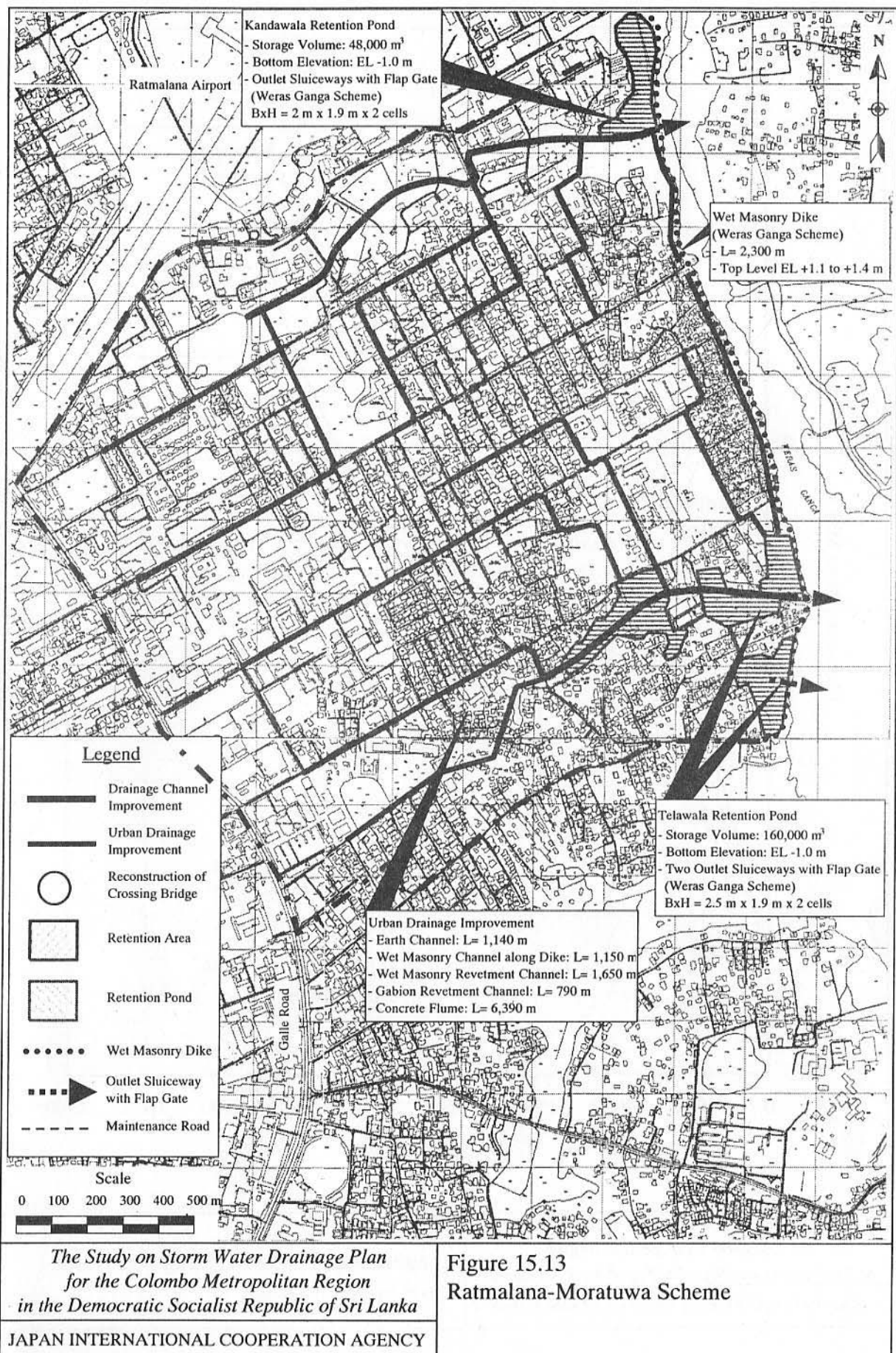
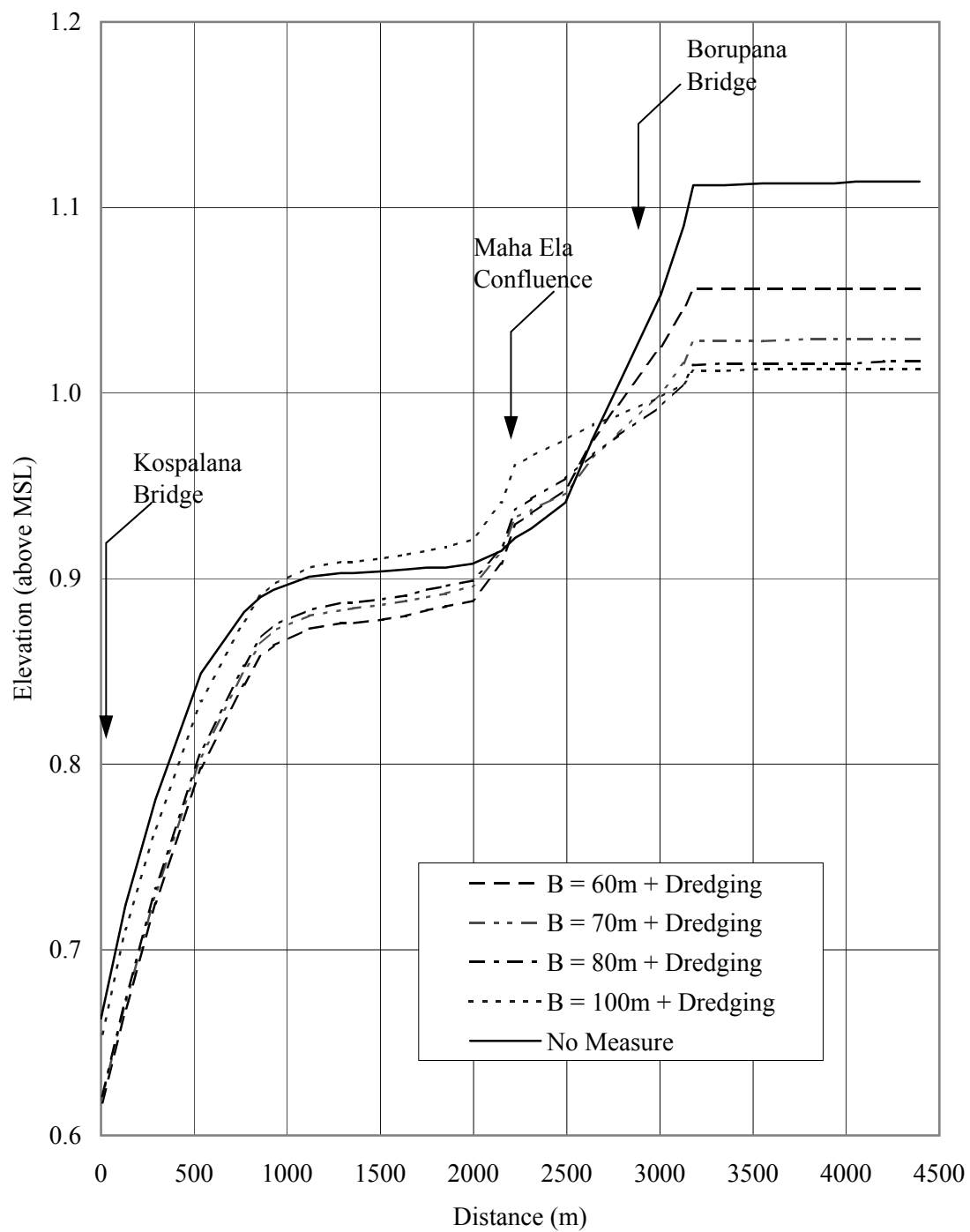


Figure 15.13  
Ratmalana-Moratuwa Scheme



*The Study on Storm Water Drainage Plan for  
the Colombo Metropolitan Region  
in the Democratic Socialist Republic of Sri Lanka*

JAPAN INTERNATIONAL COOPERATION AGENCY

Figure 15.14  
Longitudinal Profiles of Estimated Water  
Level in Weras Ganga



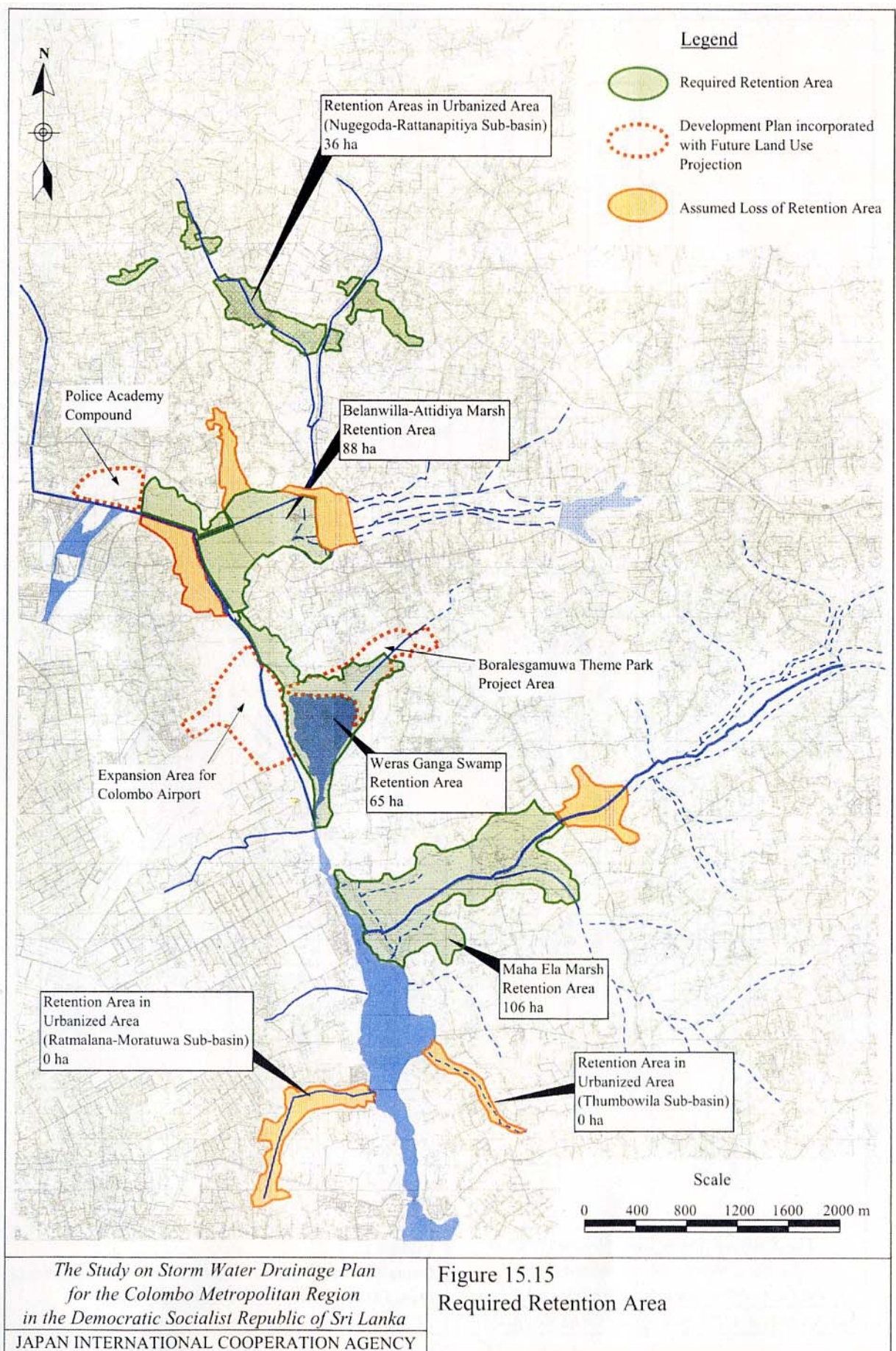
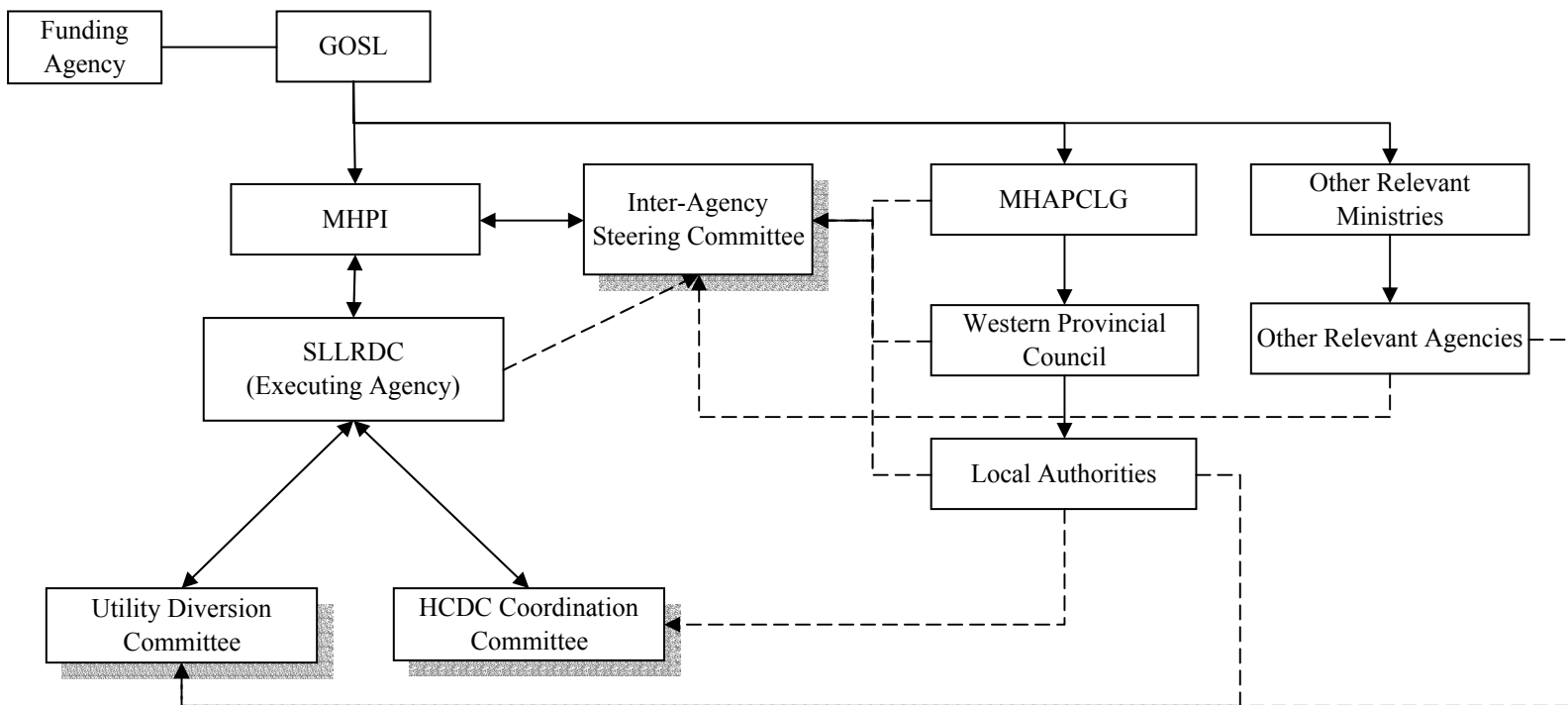


Figure 15.15  
Required Retention Area



Note:

1. Utility Diversion Committee consists of representatives from NWSDB, CEB, SLTL and Local Authorities.
2. HCDC: Housing and Community Development Committee
3. HCDC, chaired by Mayor, consist of representatives from Local Authorities, SLLRDC, NHDA, UDA, CBO/SDC and NGO.

