

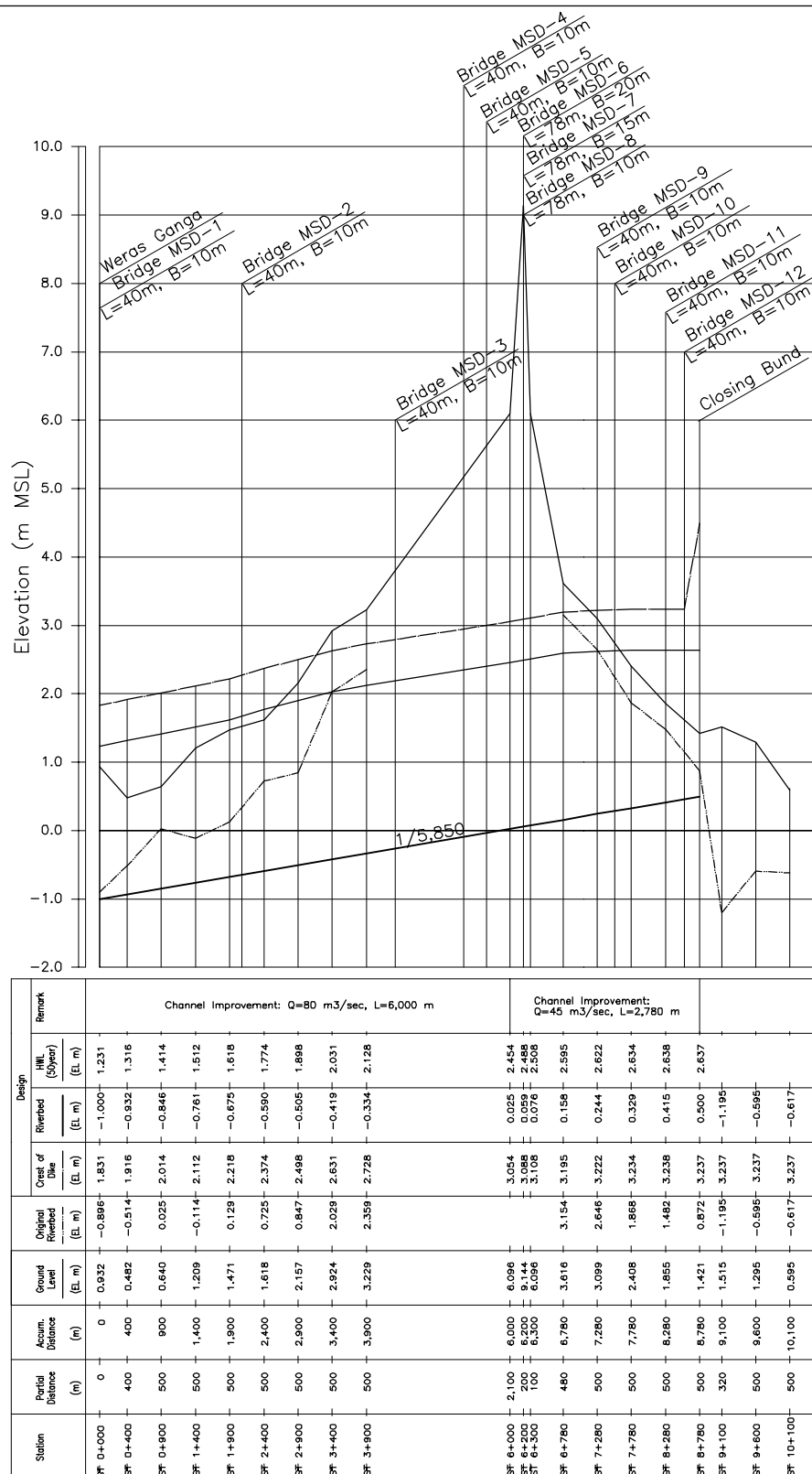
Note: W.O.C.B means width of channel bed

*The Study on Storm Water Drainage Plan
for the Colombo Metropolitan Region
in the Democratic Socialist Republic of Sri Lanka*

JAPAN INTERNATIONAL COOPERATION AGENCY

Figure 4.39

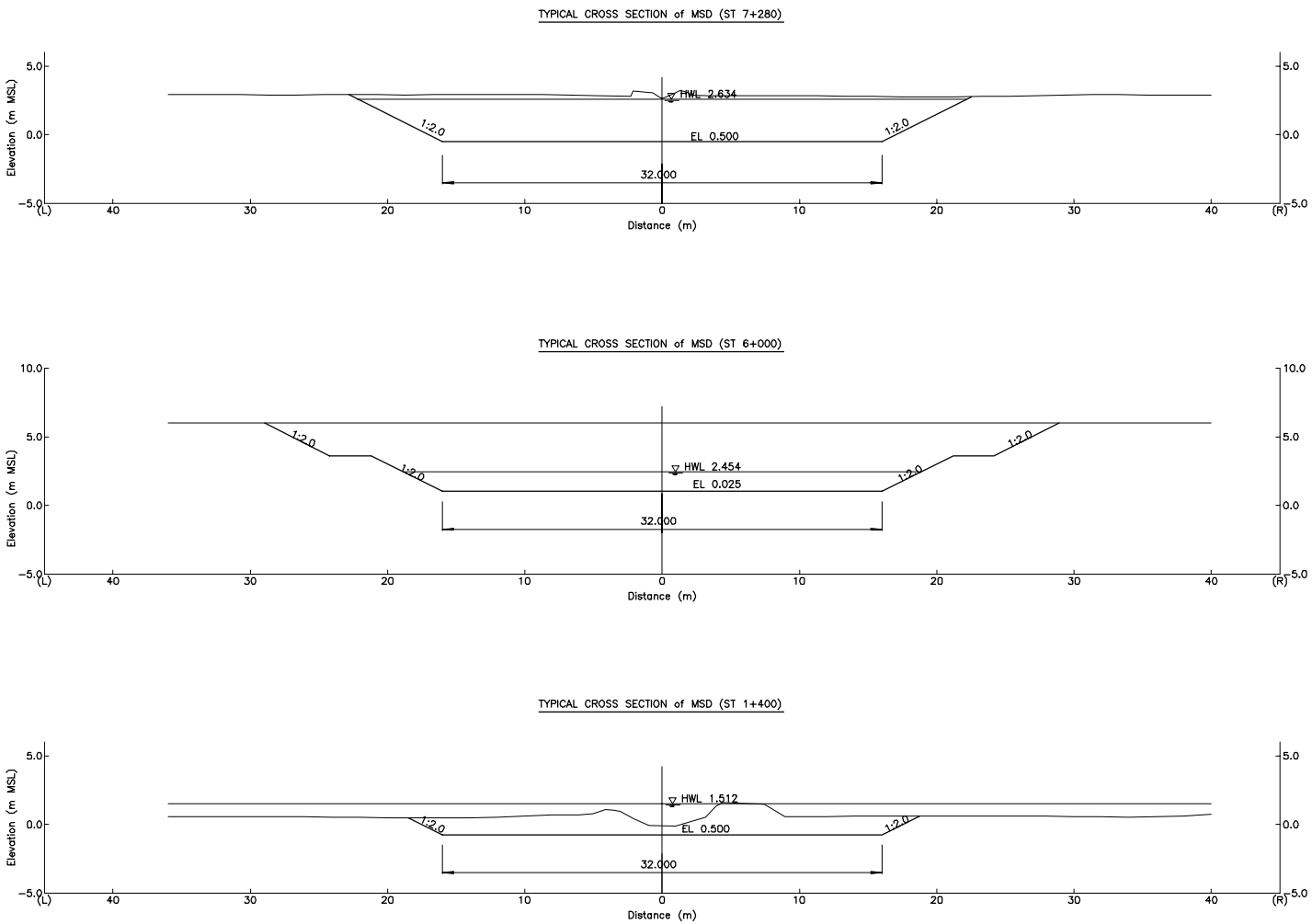
General Plan of Proposed Madiwela South
Diversion Channel



*The Study on Storm Water Drainage Plan
for the Colombo Metropolitan Region
in the Democratic Socialist Republic of Sri Lanka*

JAPAN INTERNATIONAL COOPERATION AGENCY

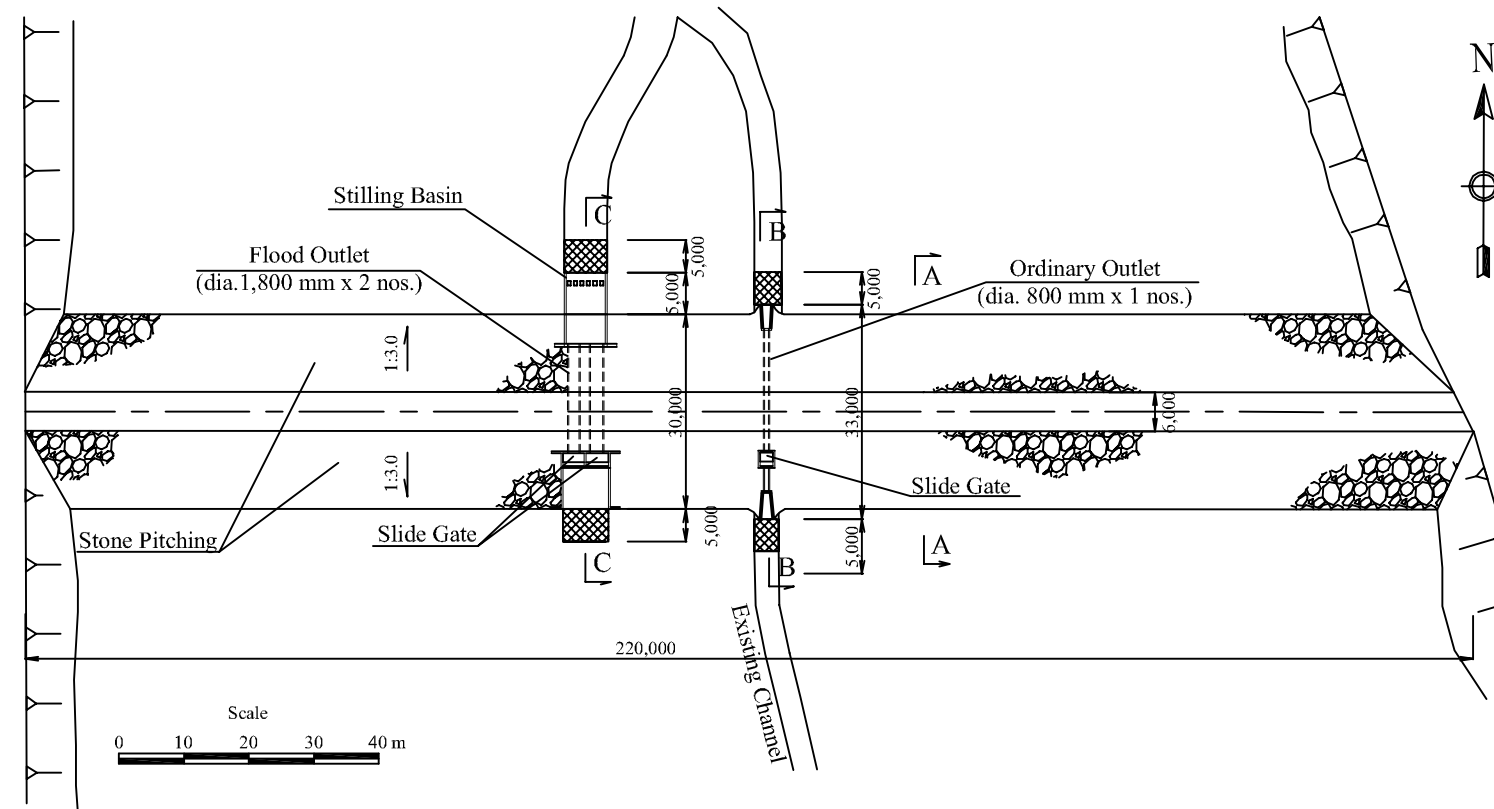
Figure 4.40
Longitudinal Profile of Proposed Madiwela
South Diversion Channel



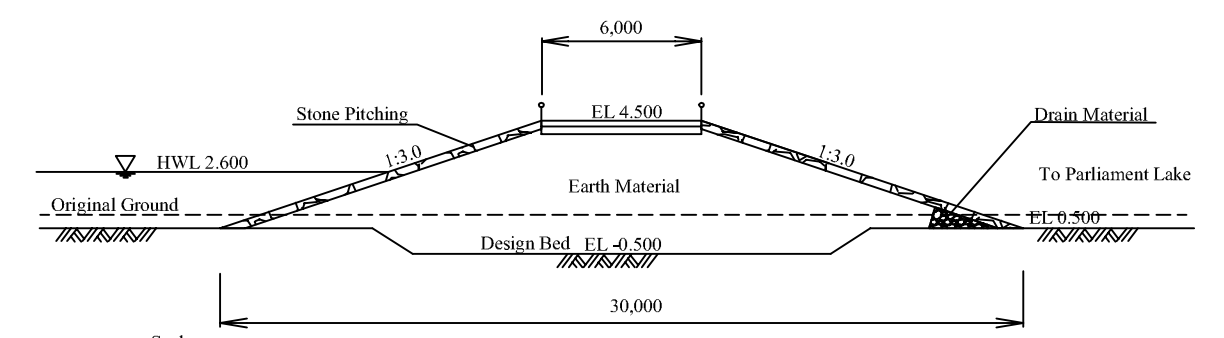
*The Study on Storm Water Drainage Plan
for the Colombo Metropolitan Region
in the Democratic Socialist Republic of Sri Lanka*

JAPAN INTERNATIONAL COOPERATION AGENCY

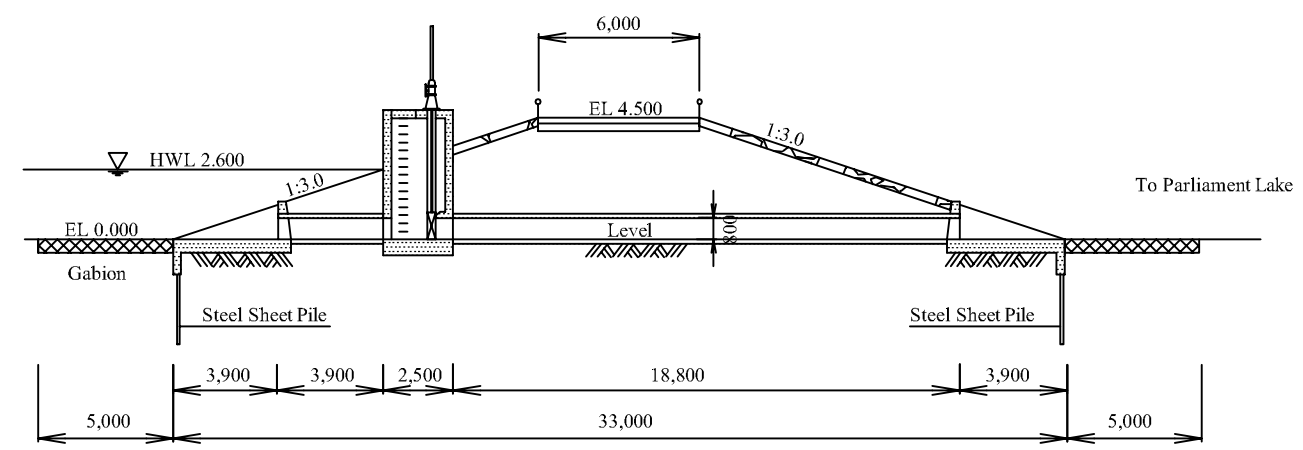
Figure 4.41
**Typical Cross Section of Proposed Madiwela
South Division Channel**



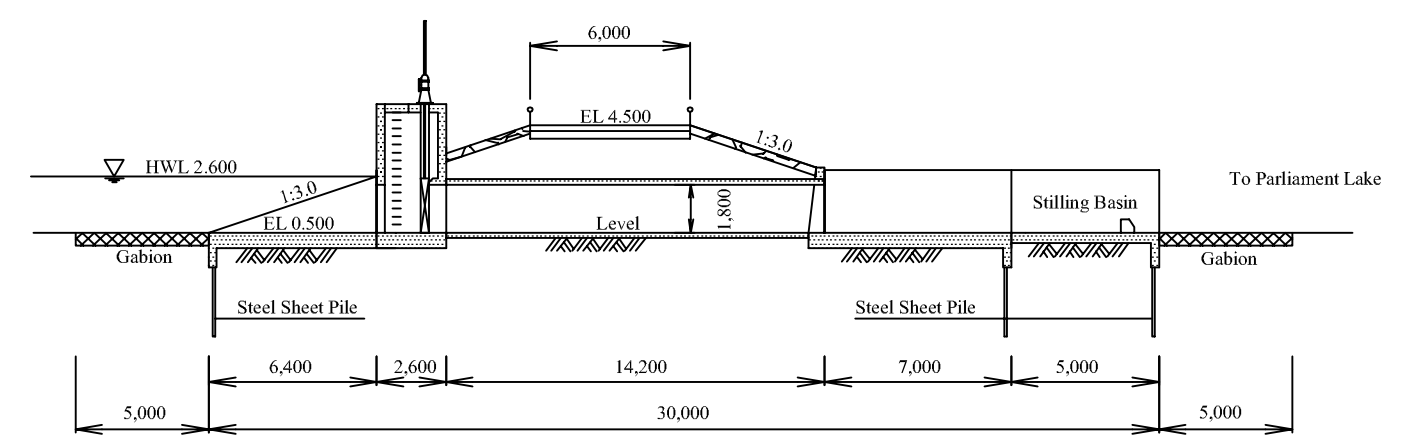
Plan



Section A-A

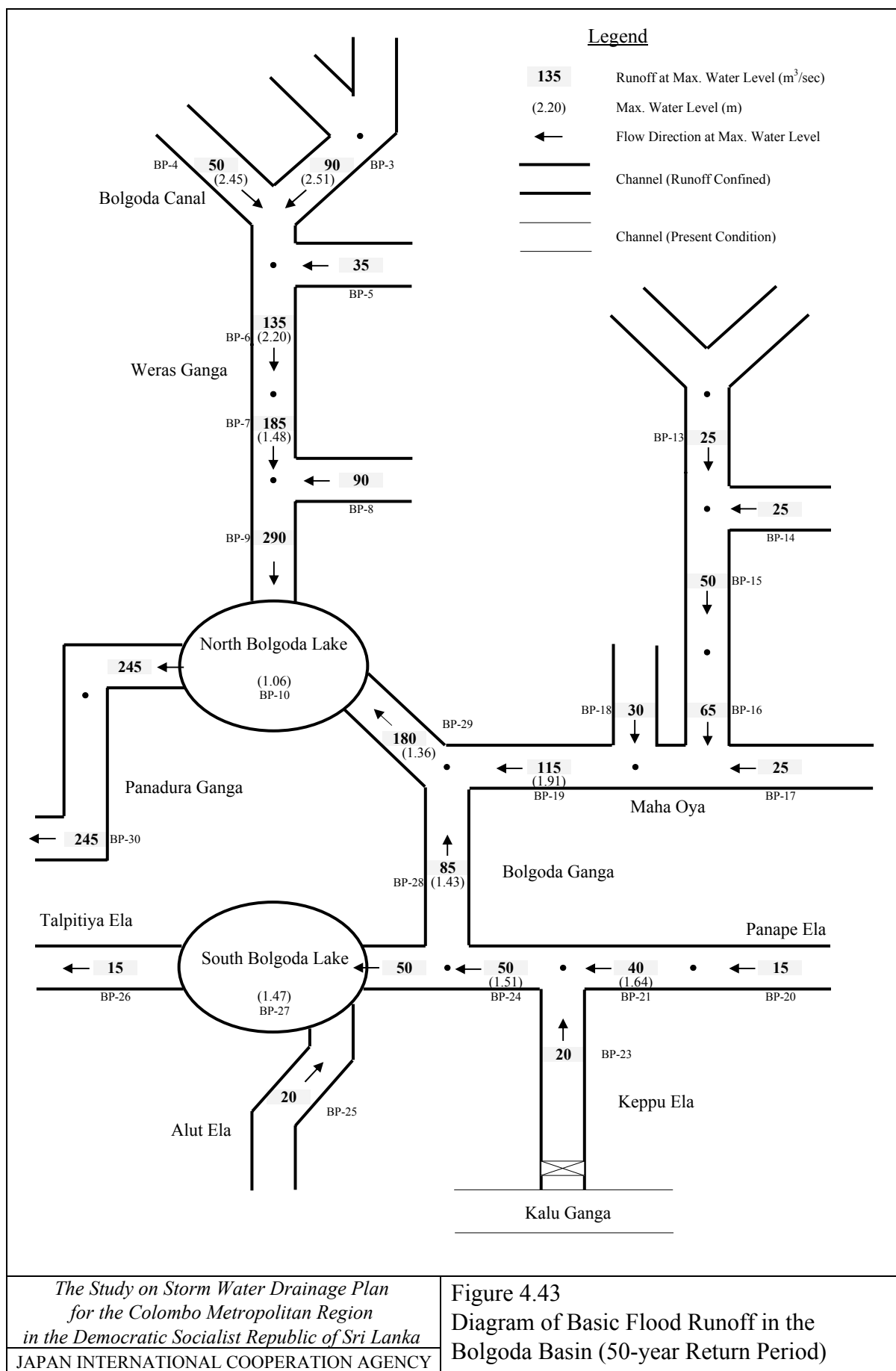


Section B-B



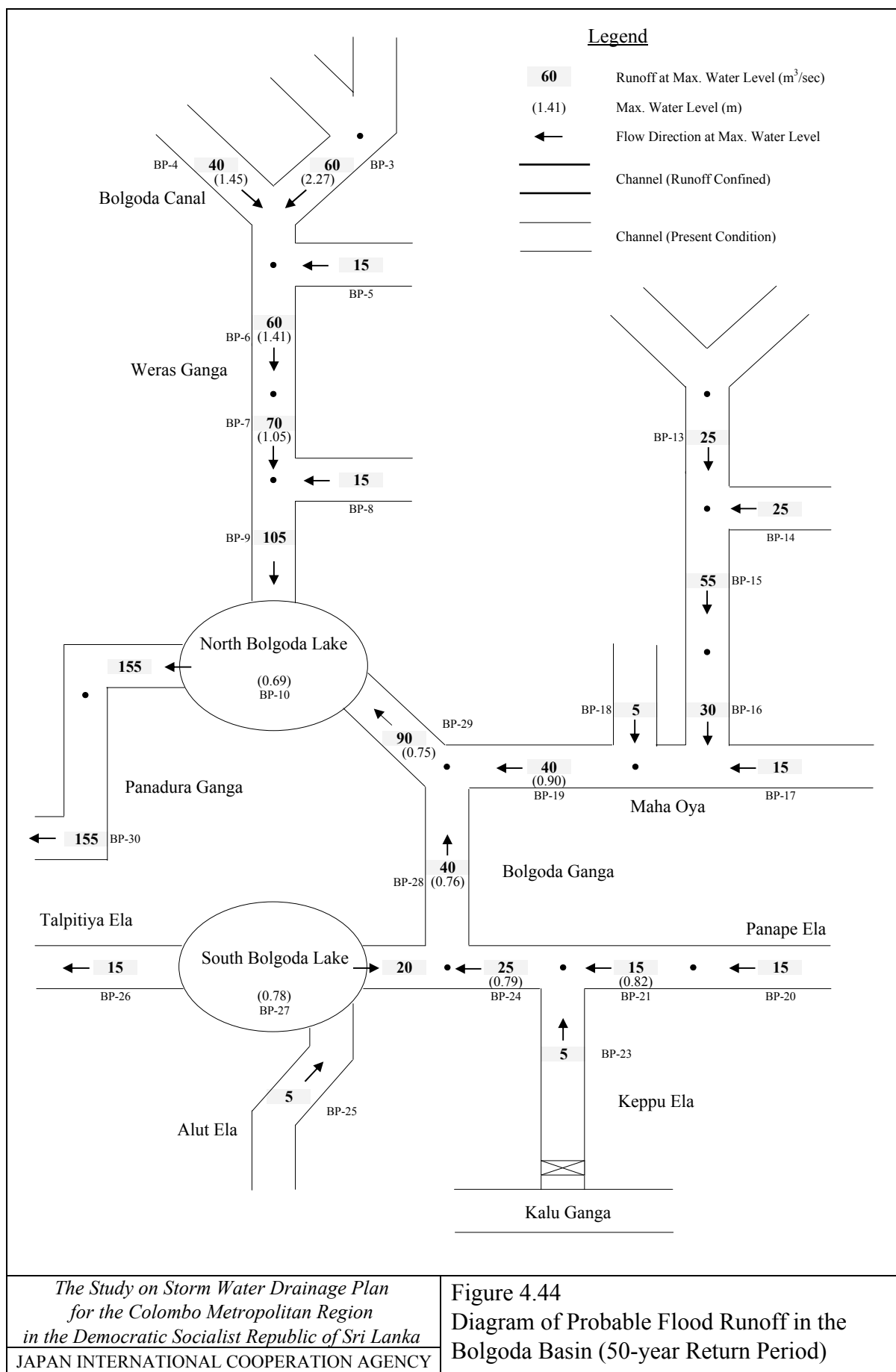
Section C-C

| | |
|--|--|
| <p><i>The Study on Storm Water Drainage Plan for the Colombo Metropolitan Region in the Democratic Socialist Republic of Sri Lanka</i></p> <p>JAPAN INTERNATIONAL COOPERATION AGENCY</p> | <p>Figure 4.42 Preliminary Design of Closing Bund for Madiwela South Diversion Channel</p> |
|--|--|



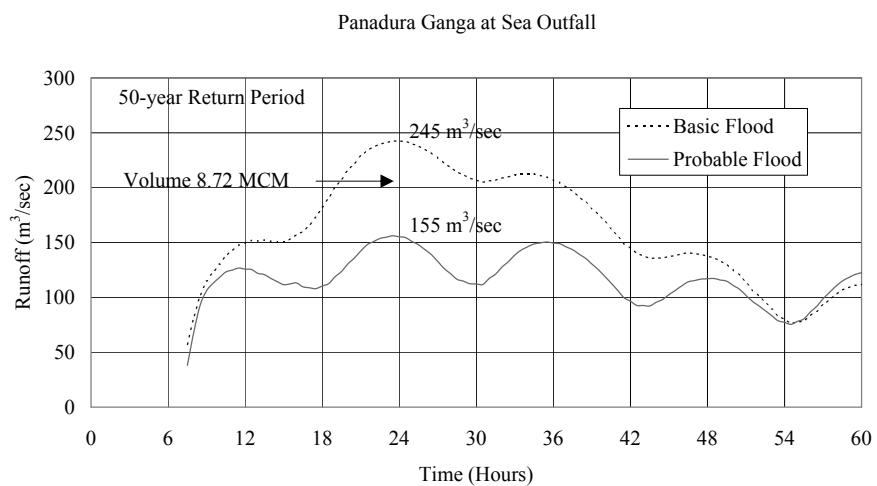
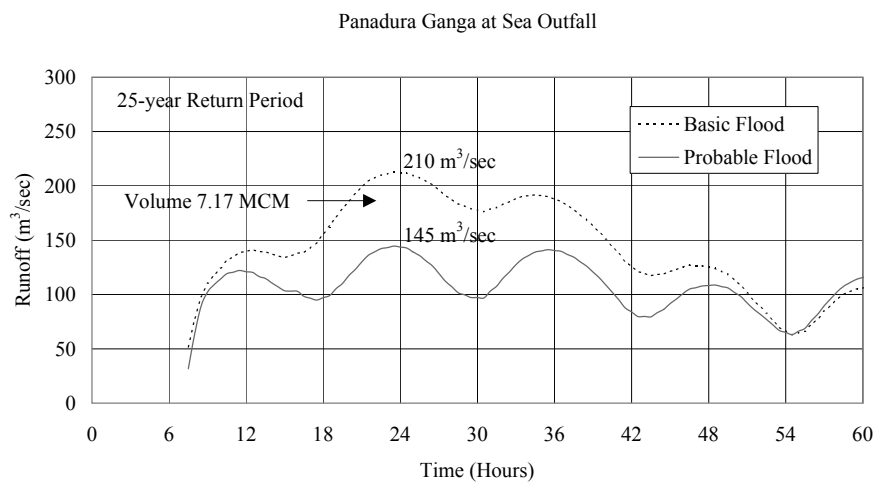
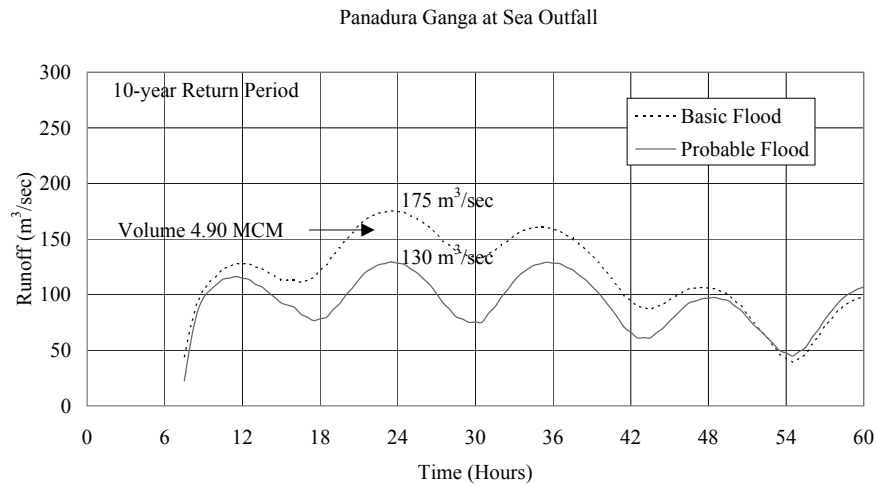
*The Study on Storm Water Drainage Plan
for the Colombo Metropolitan Region
in the Democratic Socialist Republic of Sri Lanka*
JAPAN INTERNATIONAL COOPERATION AGENCY

Figure 4.43
Diagram of Basic Flood Runoff in the
Bolgoda Basin (50-year Return Period)



*The Study on Storm Water Drainage Plan
for the Colombo Metropolitan Region
in the Democratic Socialist Republic of Sri Lanka*
JAPAN INTERNATIONAL COOPERATION AGENCY

Figure 4.44
Diagram of Probable Flood Runoff in the
Bolgoda Basin (50-year Return Period)



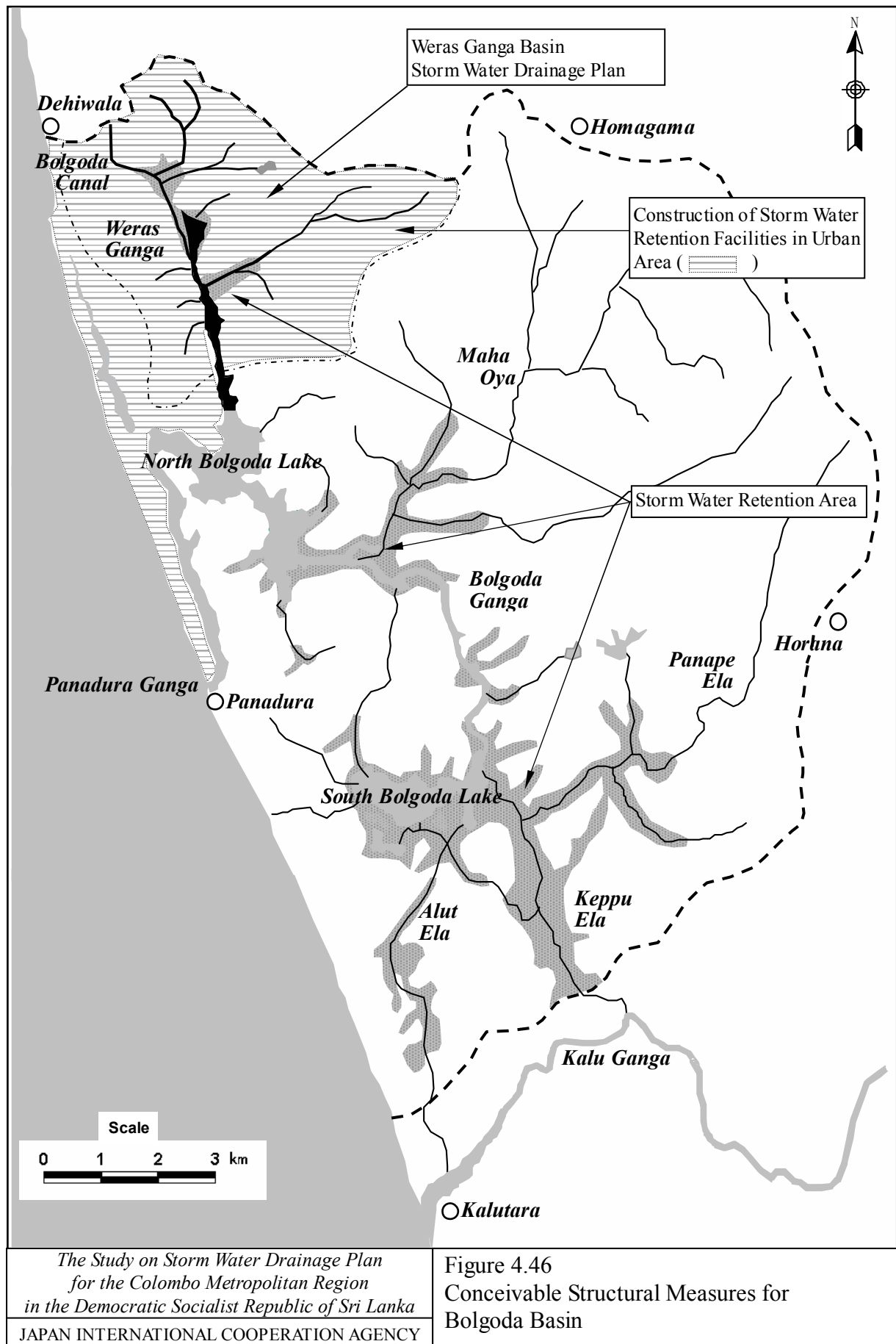


Figure 4.46
Conceivable Structural Measures for
Bolgoda Basin

