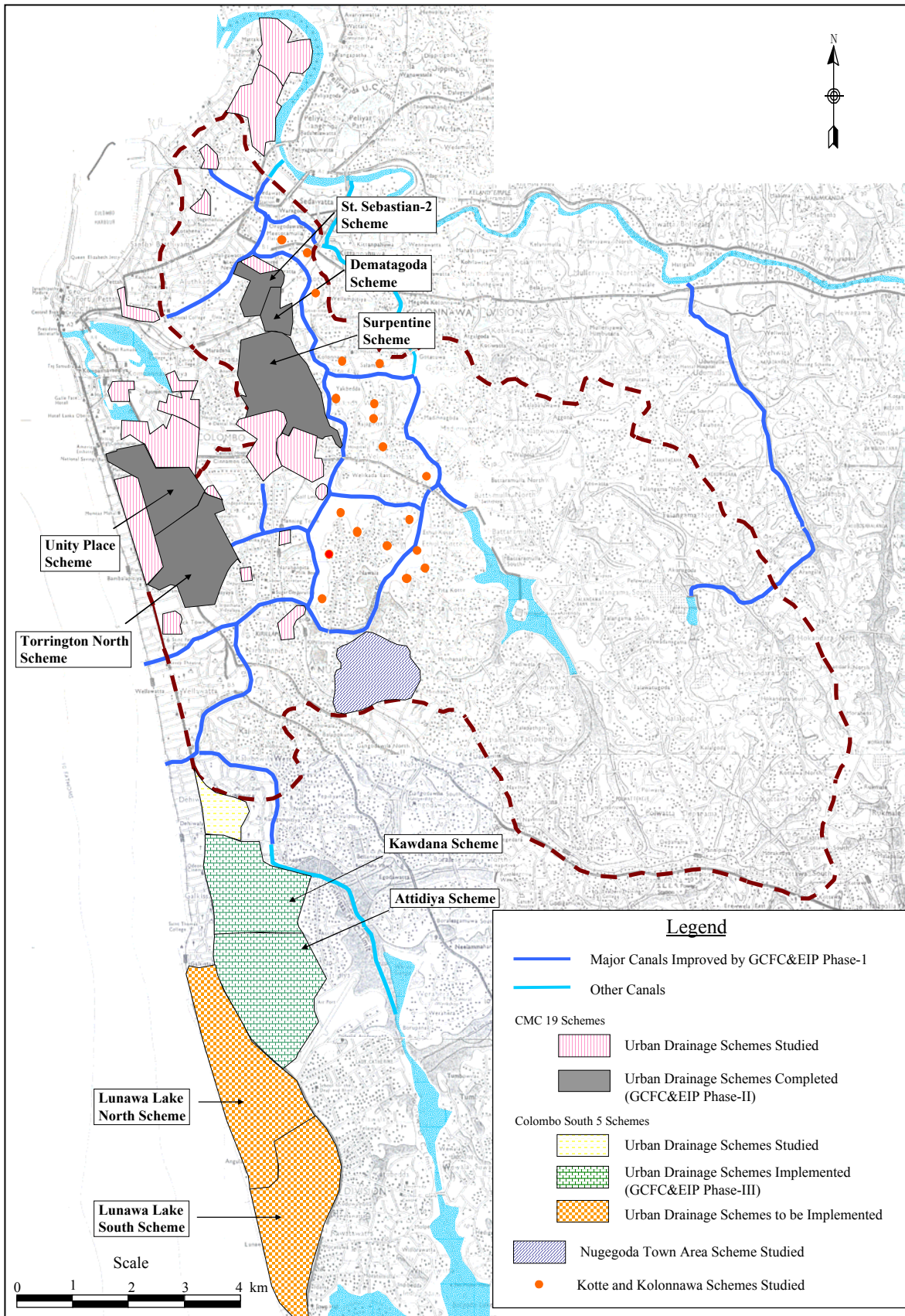


*The Study on Storm Water Drainage Plan
for the Colombo Metropolitan Region
in the Democratic Socialist Republic of Sri Lanka*

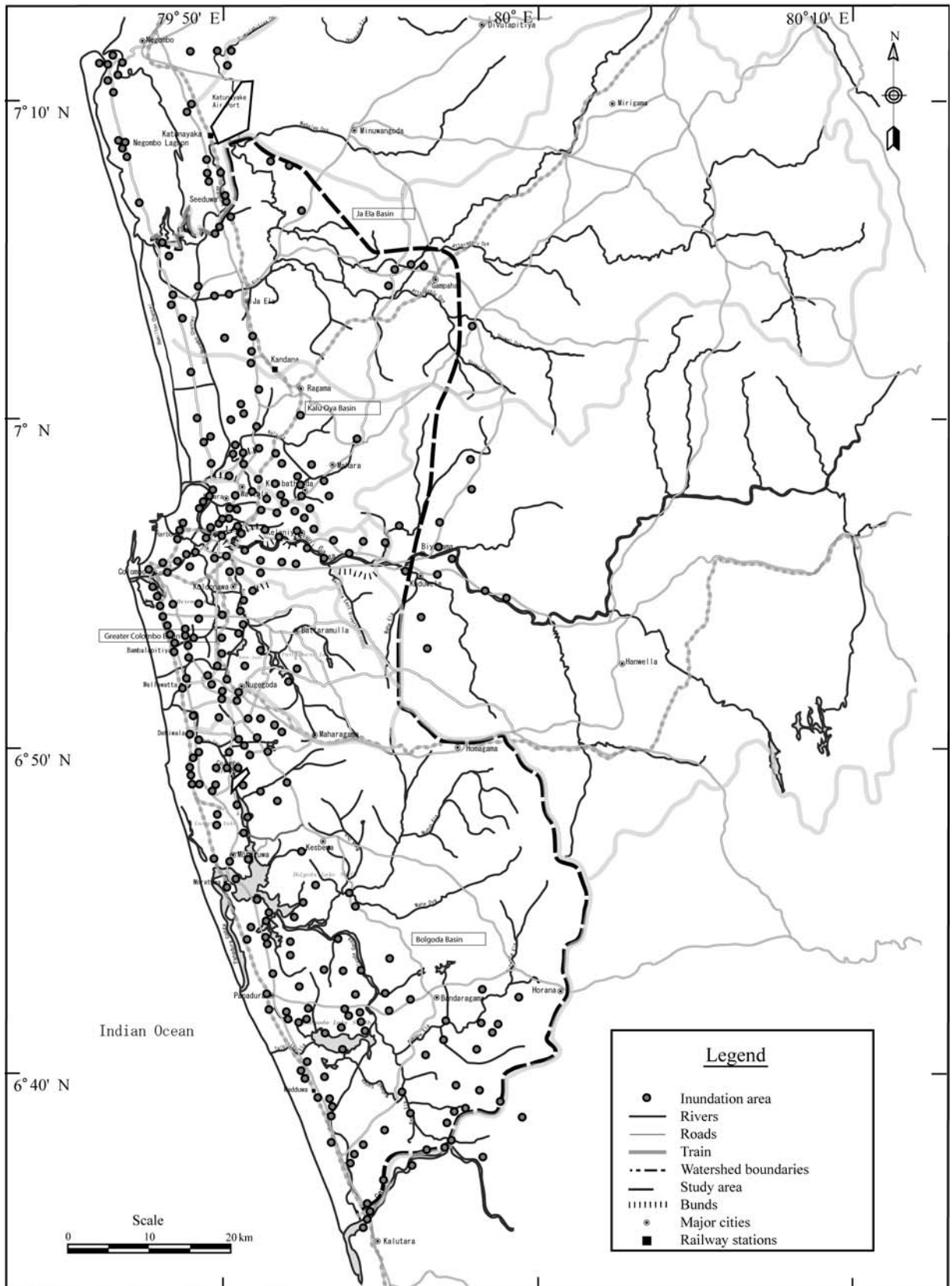
Figure 2.3
Location of Flood-prone and Low-income Settlements
Surveyed in Community Inventory Survey

JAPAN INTERNATIONAL COOPERATION AGENCY



*The Study on Storm Water Drainage Plan
for the Colombo Metropolitan Region
in the Democratic Socialist Republic of Sri Lanka*
JAPAN INTERNATIONAL COOPERATION AGENCY

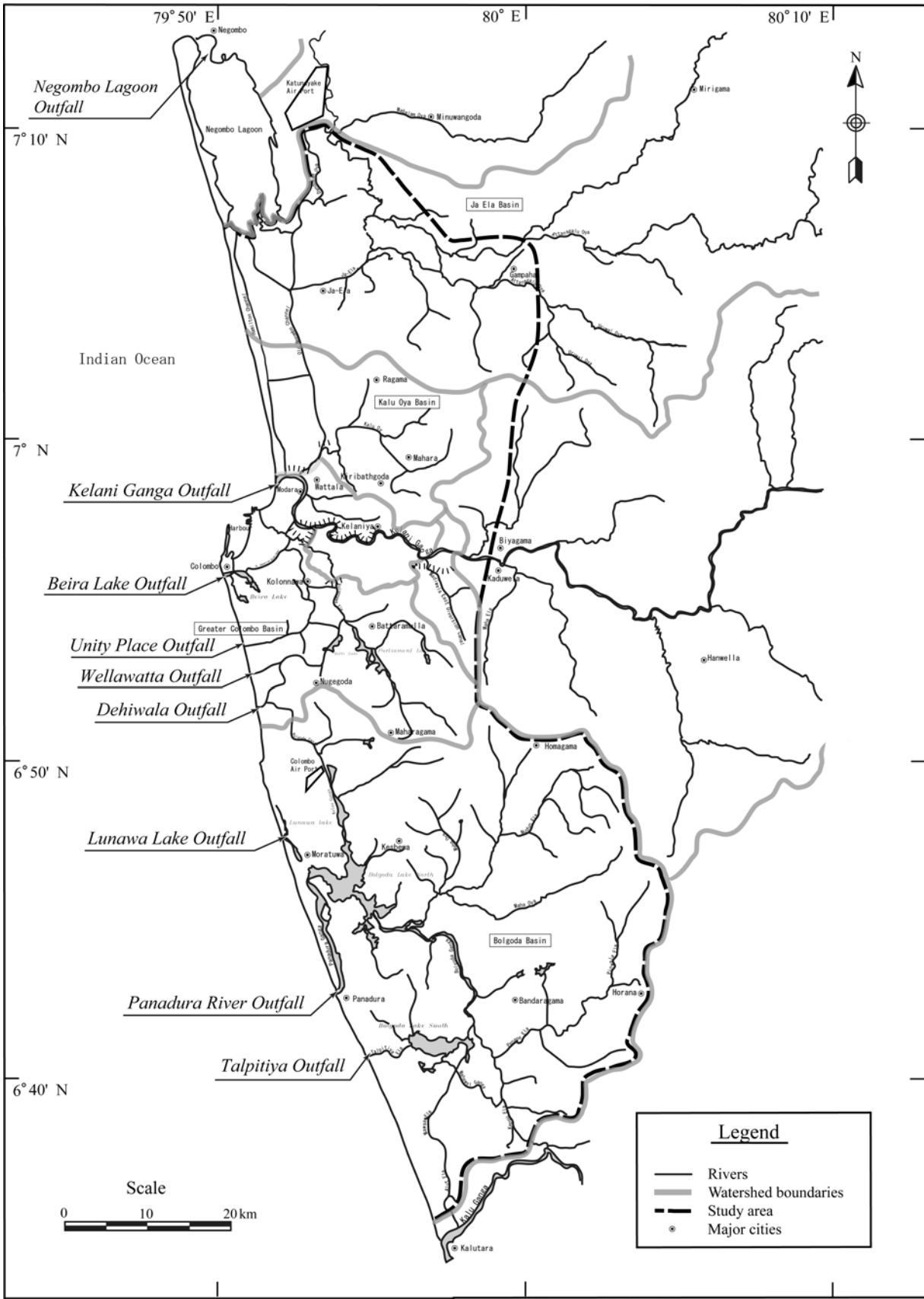
Figure 2.4
Existing and Planned Storm Water
Drainage Schemes in Greater Colombo



*The Study on Storm Water Drainage Plan
for the Colombo Metropolitan Region
in the Democratic Socialist Republic of Sri Lanka*

Figure 2.5
Locations of Inundation Areas in Study Area

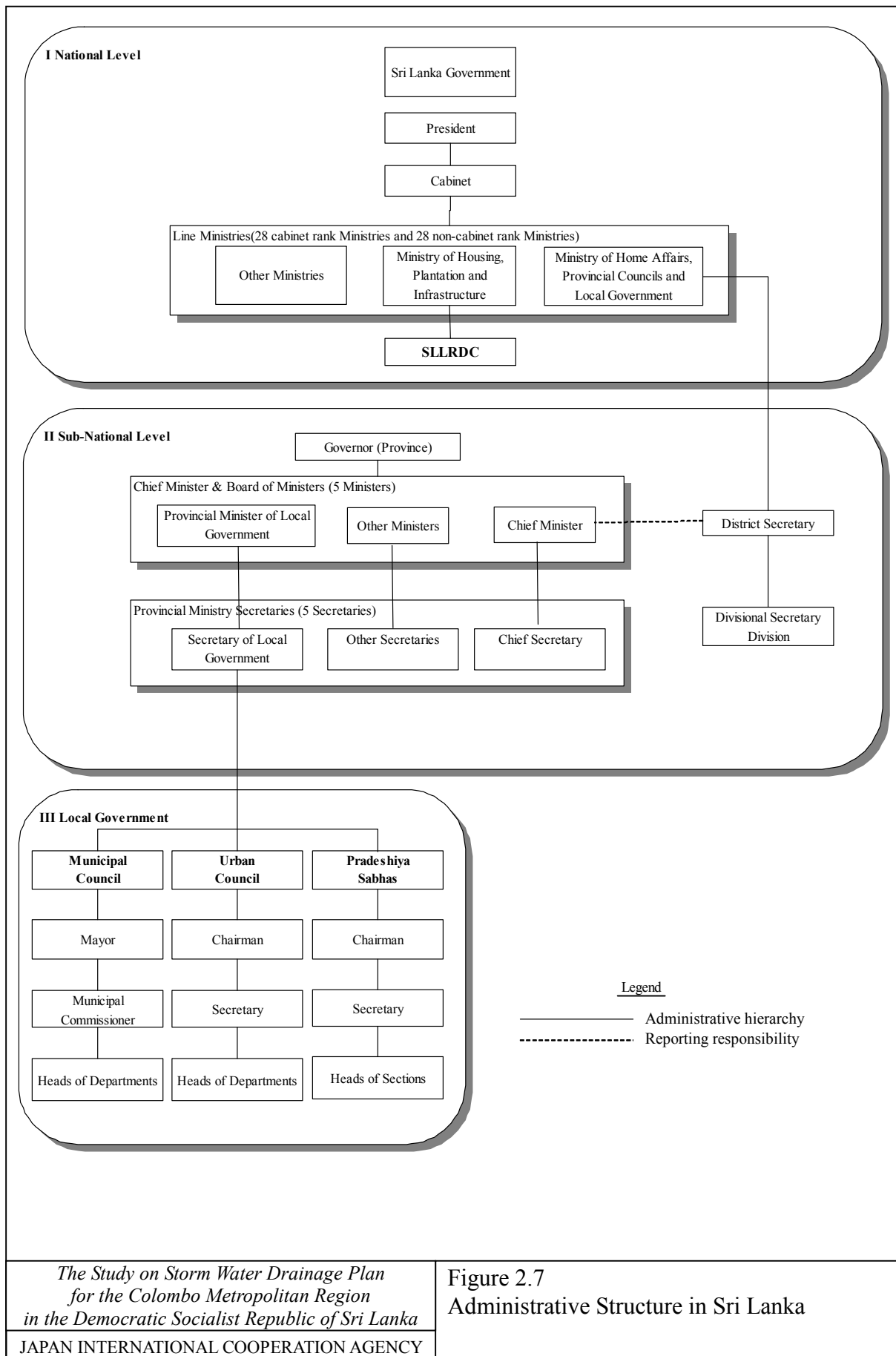
JAPAN INTERNATIONAL COOPERATION AGENCY



The Study on Storm Water Drainage Plan for the Colombo Metropolitan Region in the Democratic Socialist Republic of Sri Lanka

Figure 2.6
Locations of Outfalls

JAPAN INTERNATIONAL COOPERATION AGENCY



The Study on Storm Water Drainage Plan for the Colombo Metropolitan Region in the Democratic Socialist Republic of Sri Lanka

JAPAN INTERNATIONAL COOPERATION AGENCY

Figure 2.7
Administrative Structure in Sri Lanka

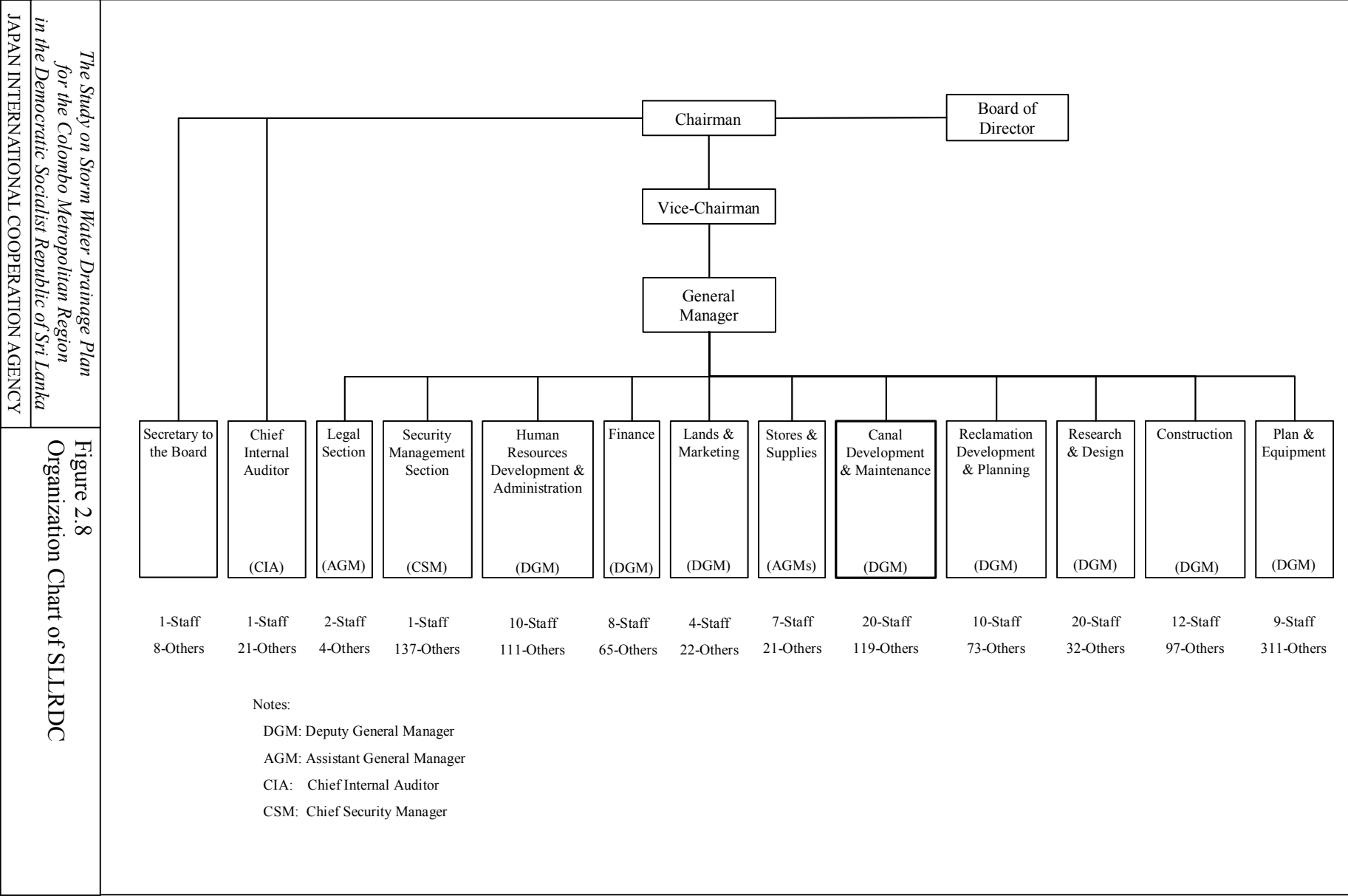
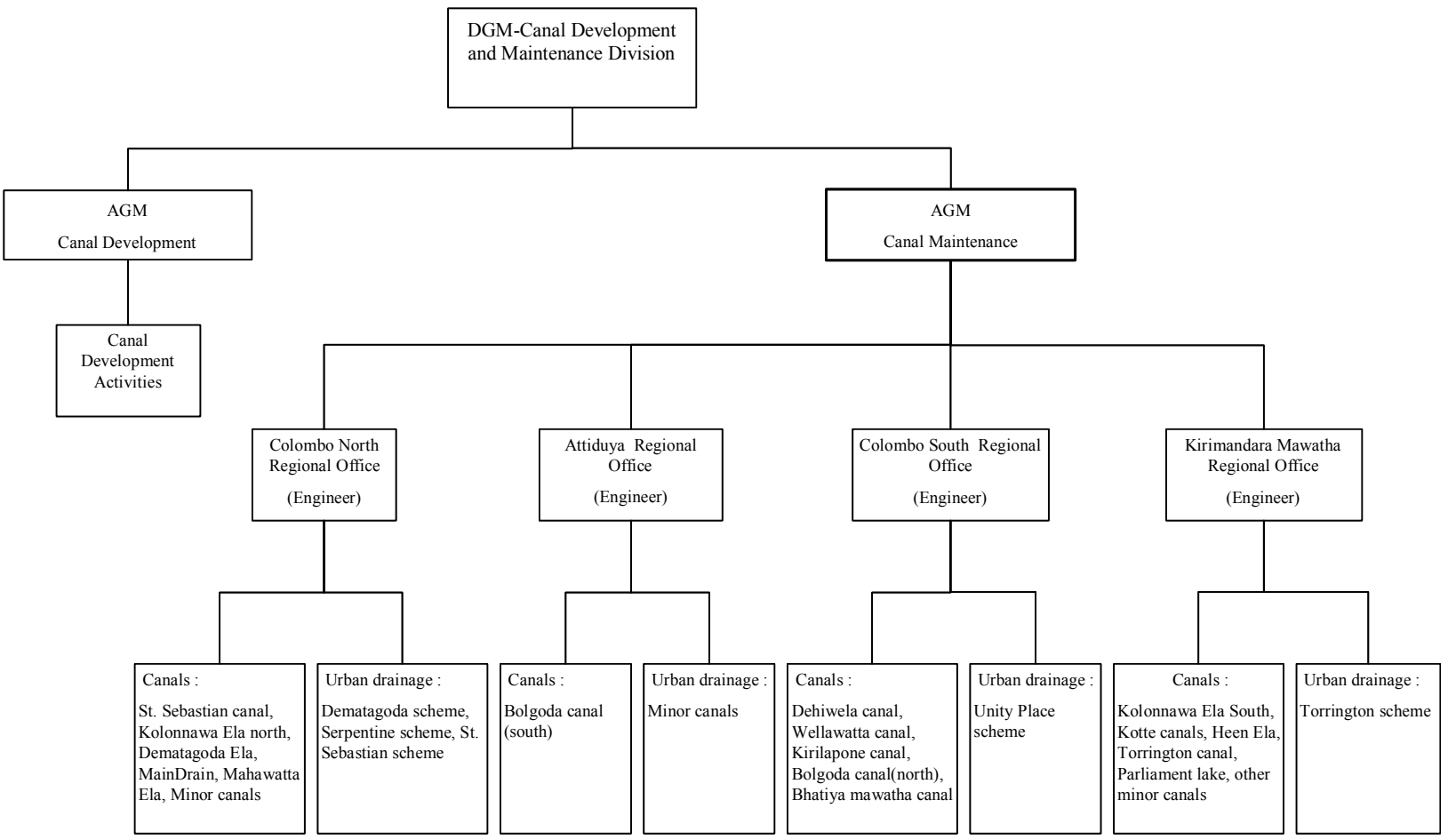


Figure 2.9
Organization Chart of Canal Development & Maintenance Division of SLLRDC



Notes:
 DGM: Deputy General Manager
 AGM: Assistant General Manager