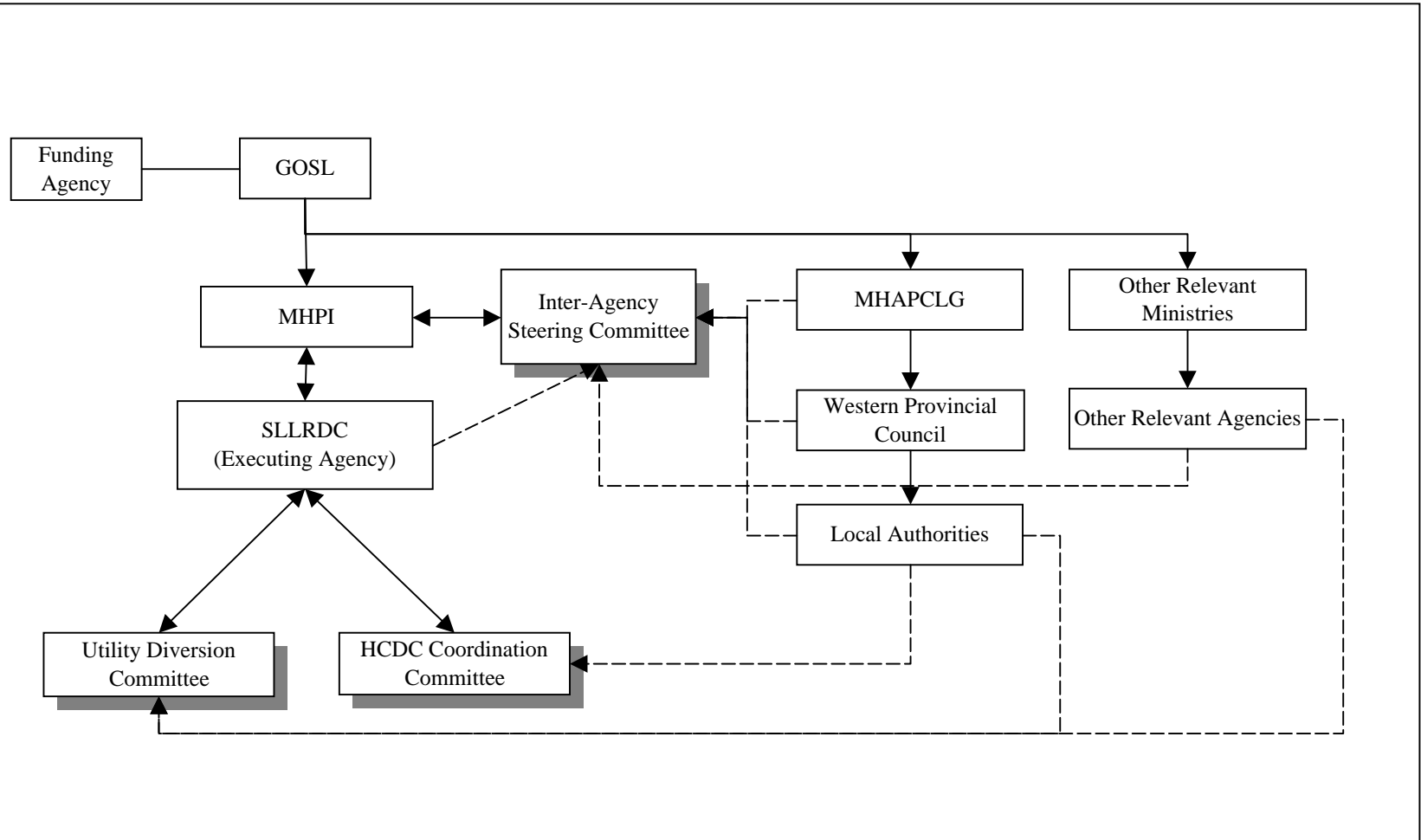


*The Study on Storm Water Drainage Plan
for the Colombo Metropolitan Region
in the Democratic Socialist Republic of Sri Lanka*

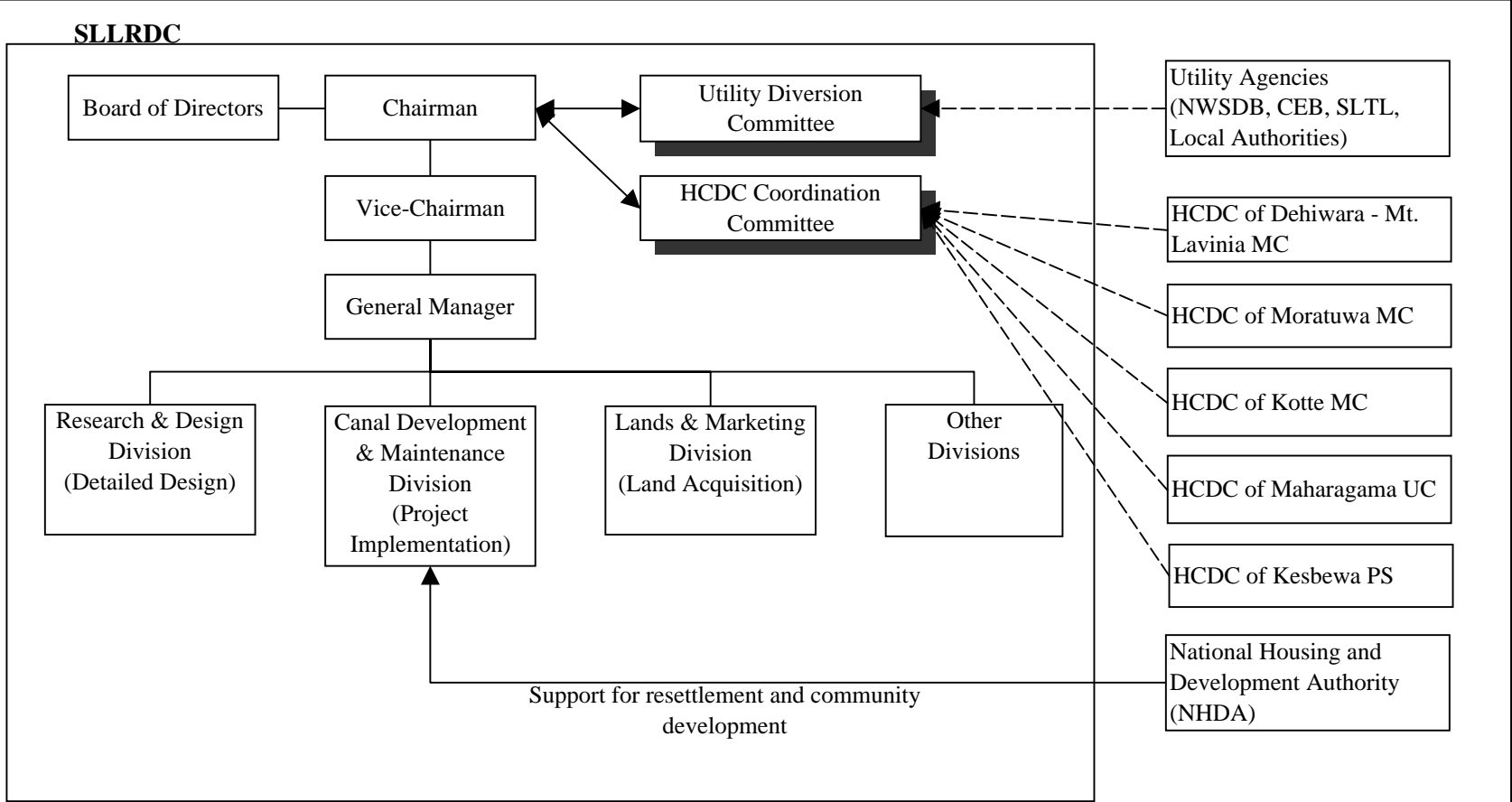
JAPAN INTERNATIONAL COOPERATION AGENCY

図 15.7
ラトマラナーモラトウワ洪水対策計画



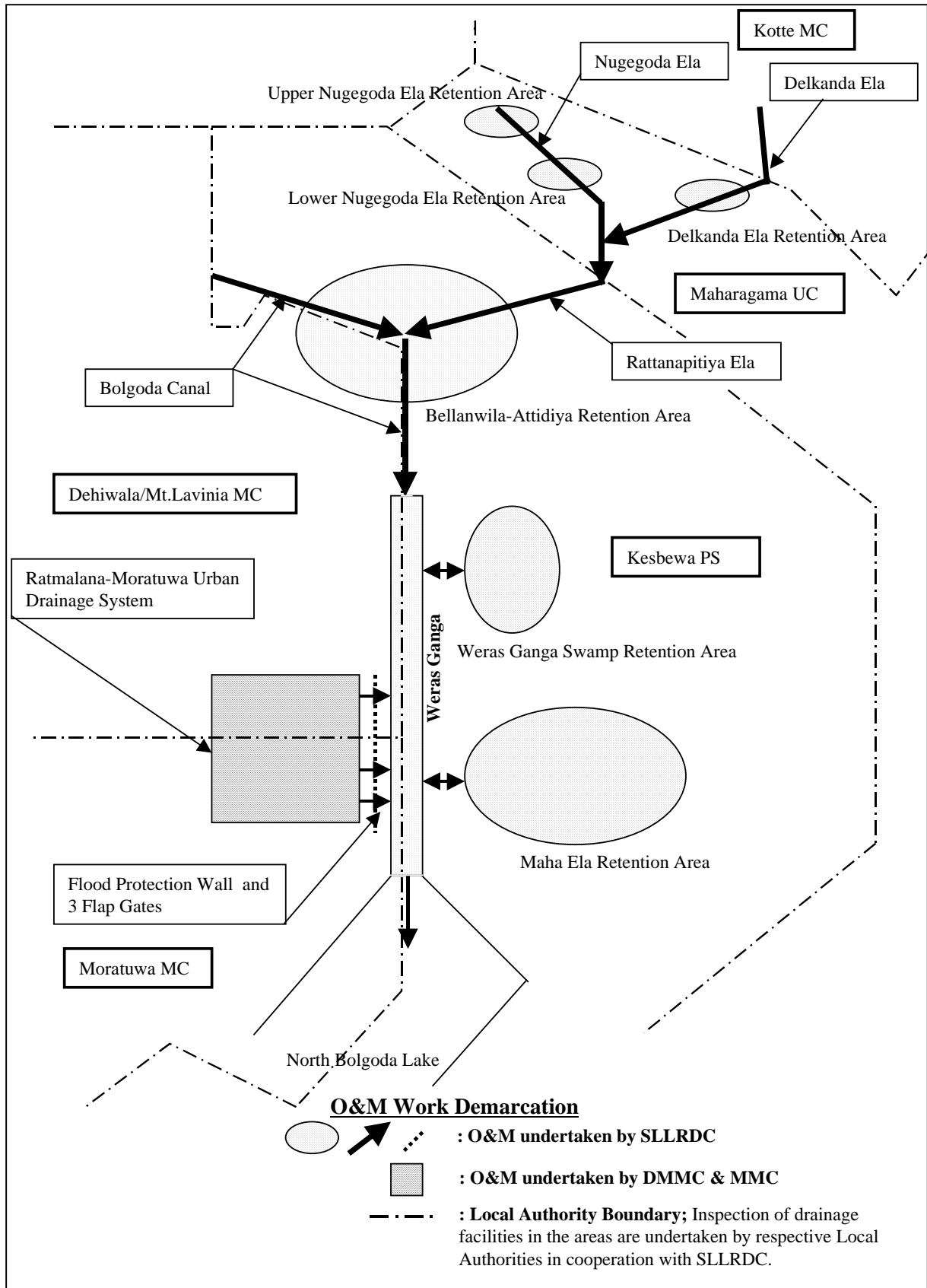
Note:

1. Utility Diversion Committee consists of representatives from NWSDB, CEB, SLTL and Local Authorities.
2. HCDC: Housing and Community Development Committee
3. HCDC, chaired by Mavor, consist of representatives from Local Authorities, SLLRDC, NHDA, UDA, CBO/SDC and NGO.



Note:

1. HCDC: Housing and Community Development Committee
2. HCDC, chaired by Mayor, consist of representatives from Local Authorities, SLLRDC, NHDA, UDA, CBO/SDC and NGO.

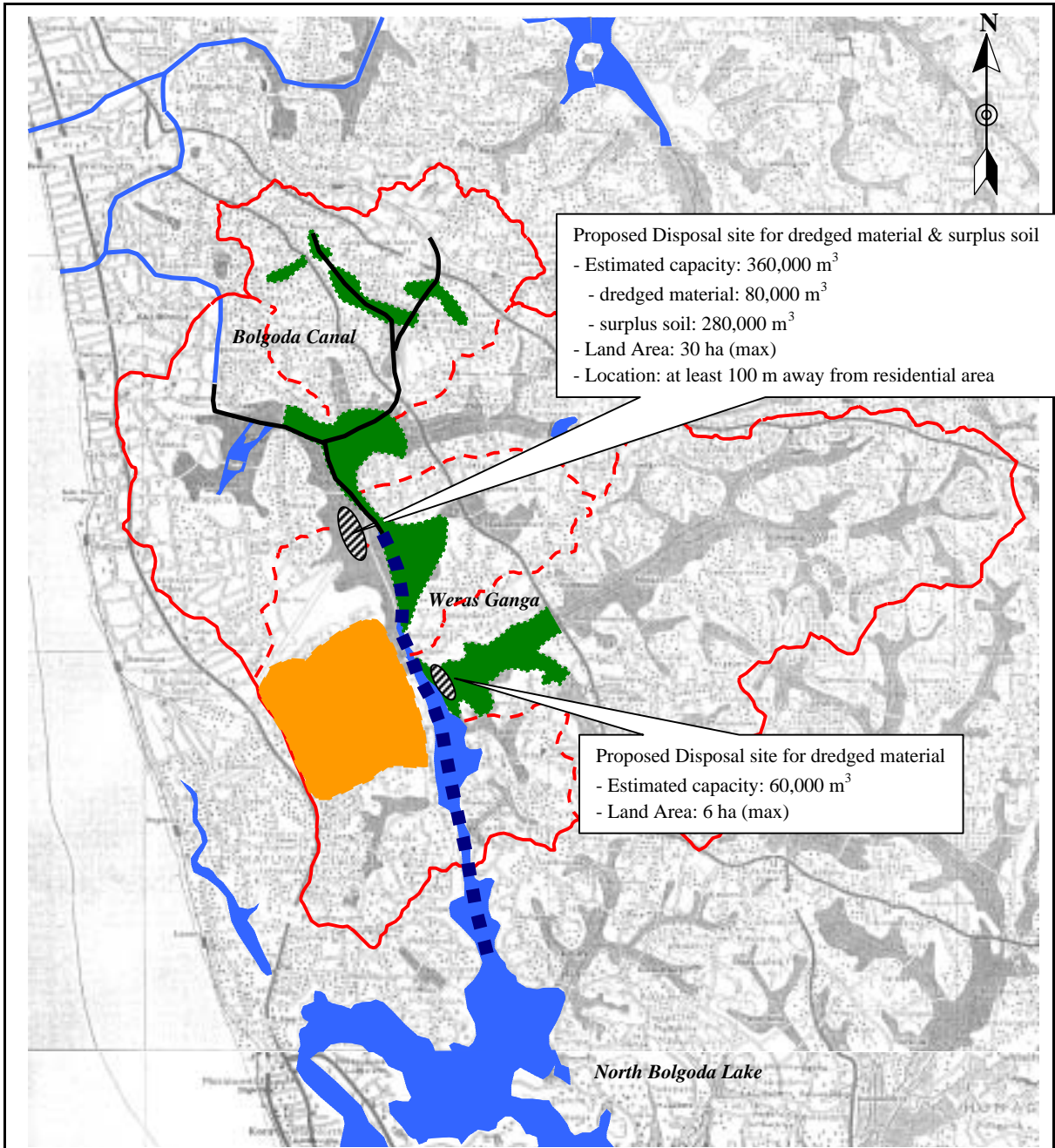


*The Study on Storm Water Drainage Plan
for the Colombo Metropolitan Region
in the Democratic Socialist Republic of Sri Lanka*

JAPAN INTERNATIONAL COOPERATION AGENCY

図 18.1

関係機関運営・維持管理業務分担



Proposed Disposal site for dredged material & surplus soil

- Estimated capacity: 360,000 m³
- dredged material: 80,000 m³
- surplus soil: 280,000 m³
- Land Area: 30 ha (max)
- Location: at least 100 m away from residential area

Proposed Disposal site for dredged material

- Estimated capacity: 60,000 m³
- Land Area: 6 ha (max)

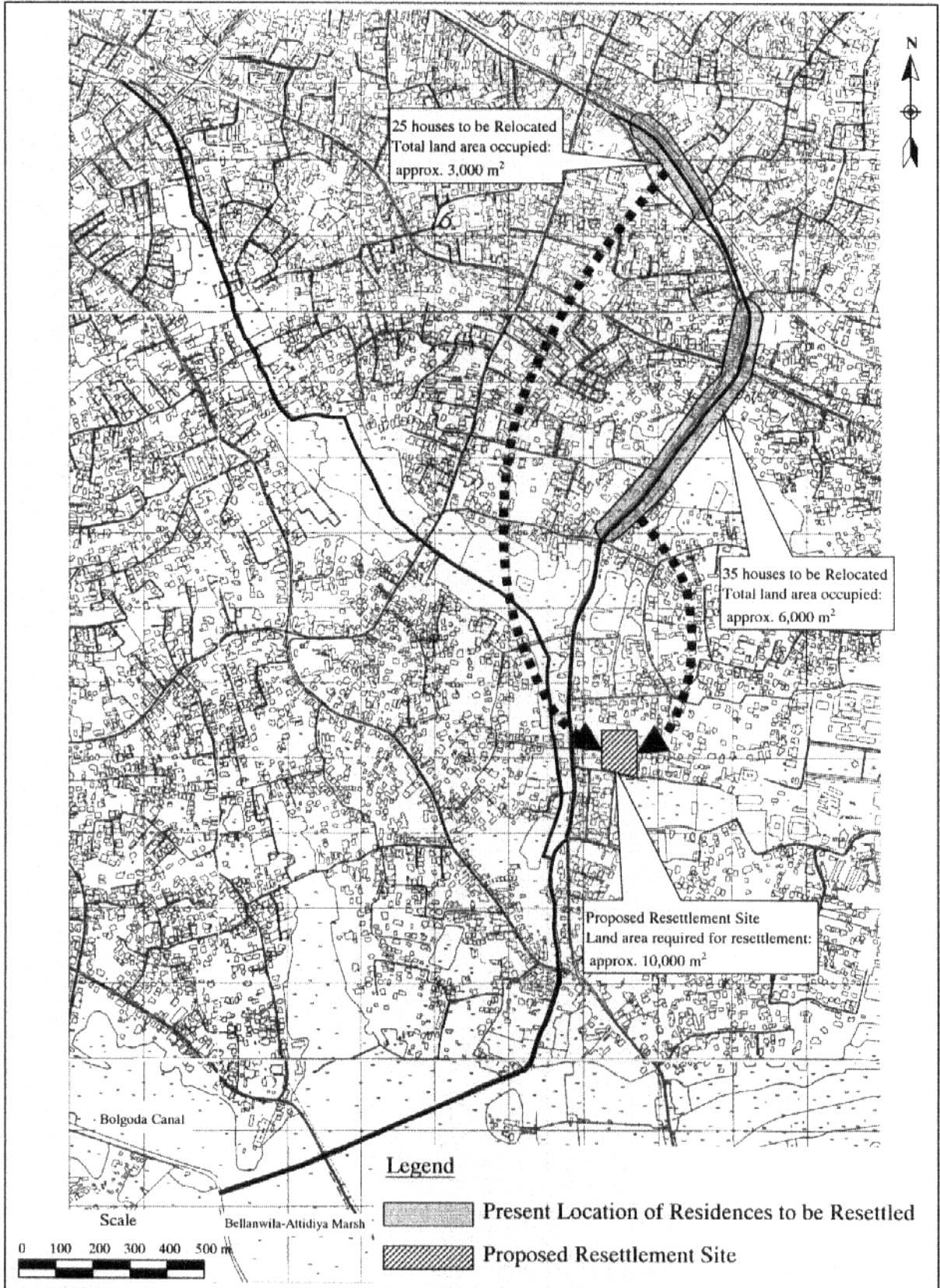
Legend

- | | | | |
|--|---|--|---------------------------------------|
| | Boundary of Objective Area for F/S | | Construction of Urban Drainage System |
| | Sub-basin Boundary | | Channel Bed Dredging |
| | Construction or Improvement of Principal Channel | | Retention Area |
| | Proposed Disposal Sites for Dredged Material/Surplus Soil | | |

Scale
0 1 2 km

The Study on Storm Water Drainage Plan
for the Colombo Metropolitan Region
in the Democratic Socialist Republic of Sri Lanka
JAPAN INTERNATIONAL COOPERATION
AGENCY

図 19.1
残土処分場候補地



The Study on Storm Water Drainage Plan
for the Colombo Metropolitan Region
in the Democratic Socialist Republic of Sri Lanka

JAPAN INTERNATIONAL COOPERATION AGENCY

図 20.1
デルカダ水路周辺地区移転候補地

Item	2003				2004				2005				2006				2007				2008				2009				
	2	4	6	8	10	12	2	4	6	8	10	12	2	4	6	8	10	12	2	4	6	8	10	12	2	4	6	8	10
0. Funding for the Project	■																												
1. Procurement of Consulting Services																													
1.1 Selection of Consultants					■																								
1.2 Detailed Field Survey and Investigation					■																								
1.3 Basic Design/Detailed Design					■				■																				
1.4 Preparation of Tender Documents									■																				
1.5 Detailed Environmental Survey and Approval Clearance					■																								
1.6 Assistance for Prequalification, Tender and Contract									■				■																
1.7 Construction Supervision													■				■				■								
2. Main Civil Works																													
2.1 Prequalification for Tender									■																				
2.2 Tender and Contract									■				■																
2.3 Preparatory Works													■				■												
2.4 Weras Ganga Scheme													■				■				■								
2.5 Bolgoda Canal Scheme													■				■				■								
2.6 Nugegoda-Rattanaipitiva Scheme													■				■				■								
2.7 Ratmalana-Moratuwa Scheme													■				■				■								
2.8 Construction of Resettlement Site (Area Grading)													■																
3. Procurement of O&M Equipment																													
3.1 Prequalification for Tender																	■												
3.2 Tender and Contract																	■				■								
3.3 Manufacturing and Delivery																					■								
4. Land Acquisition																													
4.1 Structure Sites									■				■																
4.2 Storm Water Retention Area (Proposal)					■				■				■				■				■								

The Study on Storm Water Drainage Plan
 for the Colombo Metropolitan Region
 in the Democratic Socialist Republic of Sri Lanka
 JAPAN INTERNATIONAL COOPERATION AGENCY

23.1
 提案事業実施工程