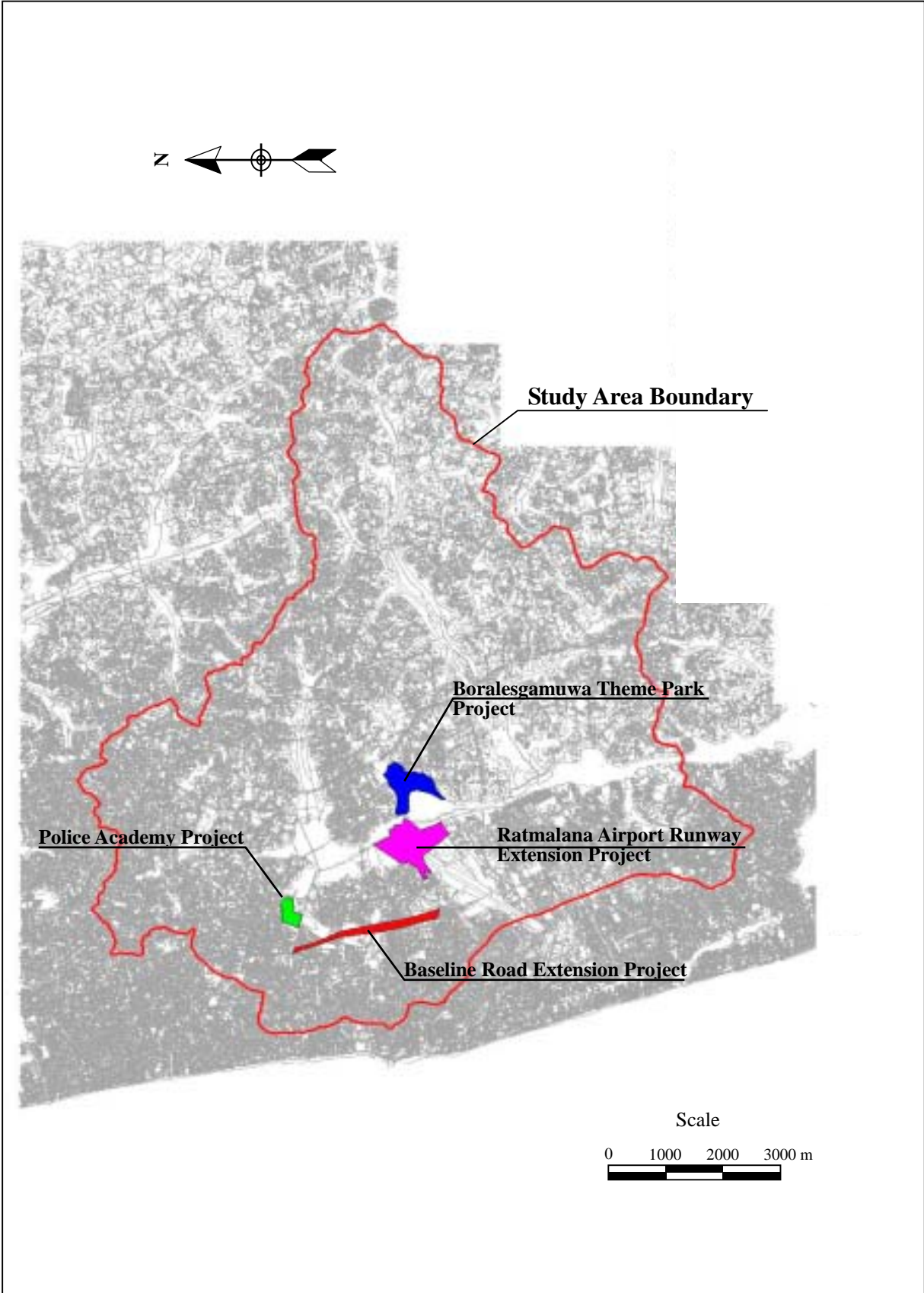


*The Study on Storm Water Drainage Plan
for the Colombo Metropolitan Region
in the Democratic Socialist Republic of Sri Lanka*

JAPAN INTERNATIONAL COOPERATION AGENCY

図 13.2
ウェラス川流域洪水常襲地区



*The Study on Storm Water Drainage Plan
for the Colombo Metropolitan Region
in the Democratic Socialist Republic of Sri Lanka*

JAPAN INTERNATIONAL COOPERATION AGENCY

図 15.1
ウエラス川流域内開発事業計画

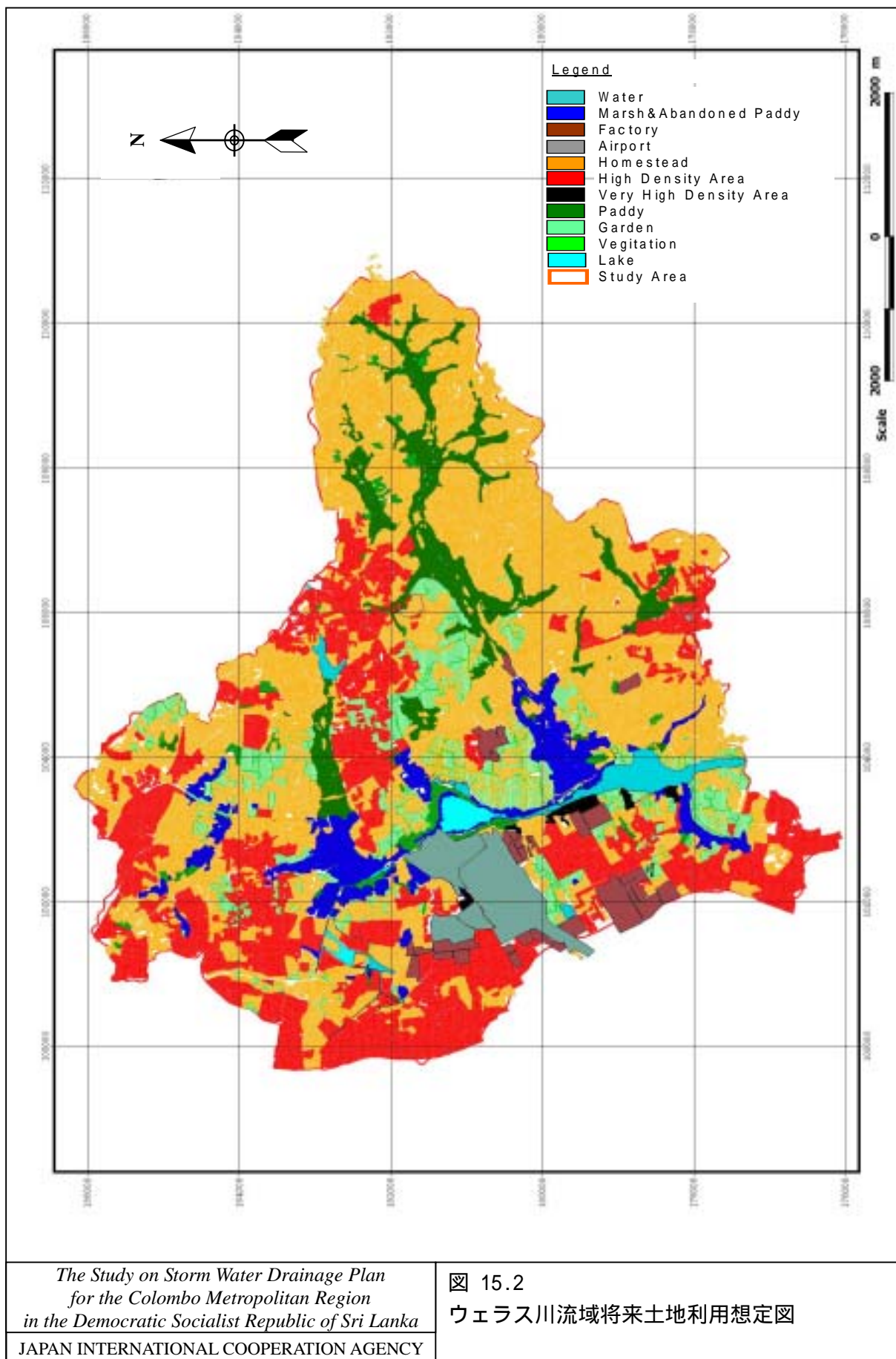
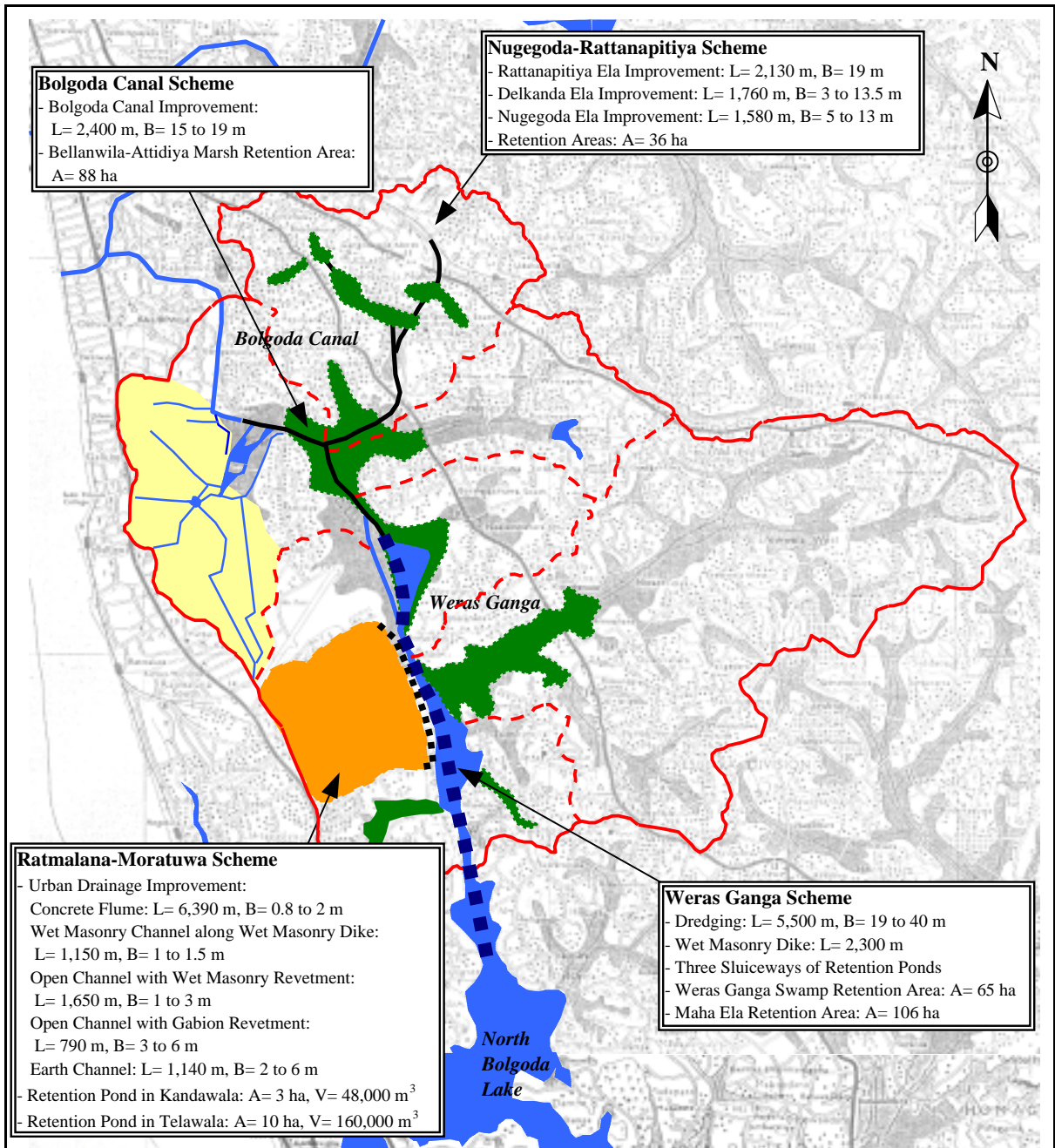


図 15.2
ウェラス川流域将来土地利用想定図



Legend

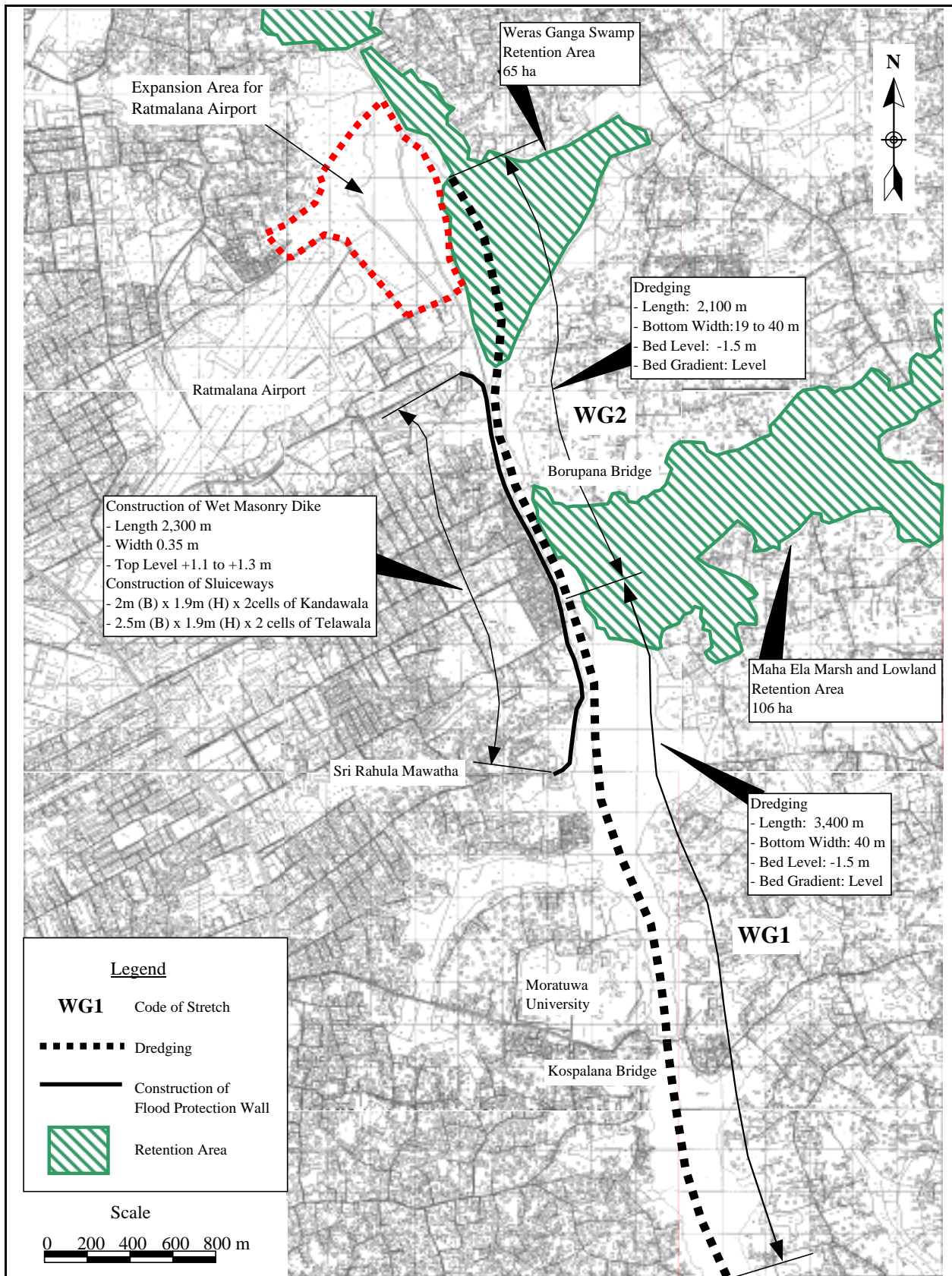
- | | | | |
|--|--|--|---------------------------------------|
| | Basin Boundary | | Construction of Urban Drainage System |
| | Sub-basin Boundary | | Channel Bed Dredging |
| | Construction or Improvement of Principal Channel | | Retention Area |
| | Construction of Dike | | Construction of Diversion Channel |

Scale

0 1 2 km

The Study on Storm Water Drainage Plan
for the Colombo Metropolitan Region
in the Democratic Socialist Republic of Sri Lanka
JAPAN INTERNATIONAL COOPERATION AGENCY

図 15.3
ウエラス川流域洪水対策優先計画



*The Study on Storm Water Drainage Plan
for the Colombo Metropolitan Region
in the Democratic Socialist Republic of Sri Lanka*

JAPAN INTERNATIONAL COOPERATION AGENCY

図 15.4
ウエラス川洪水対策計画