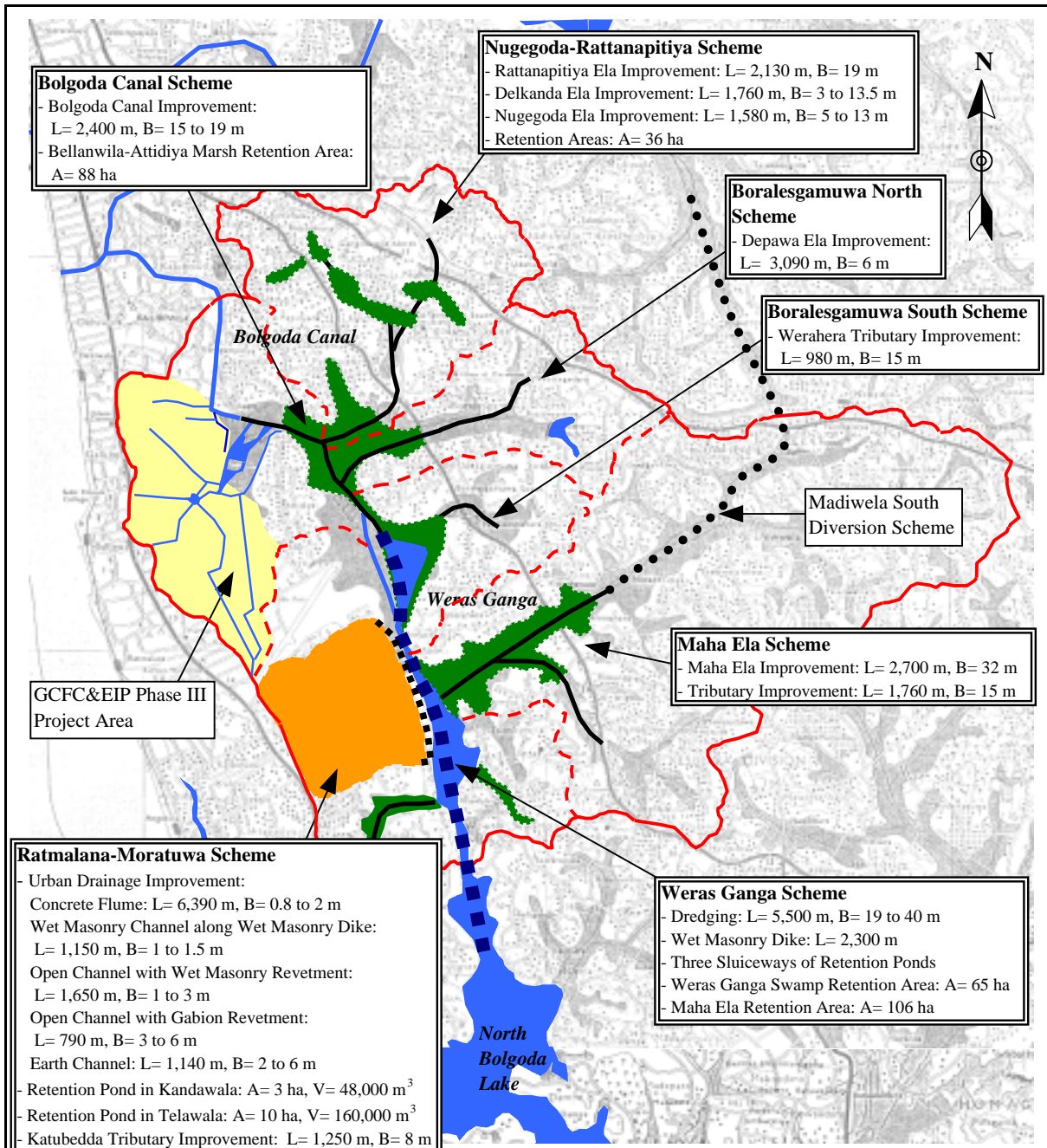


The Study on Storm Water Drainage Plan for the Colombo Metropolitan Region in the Democratic Socialist Republic of Sri Lanka  
JAPAN INTERNATIONAL COOPERATION AGENCY

図 4.12  
ボルゴダ流域洪水対策計画





The Study on Storm Water Drainage Plan  
for the Colombo Metropolitan Region  
in the Democratic Socialist Republic of Sri Lanka

JAPAN INTERNATIONAL COOPERATION AGENCY

図 4.13  
ウエラス川流域洪水対策計画

Component Project	Cost (million Rs.)	2004	2005	2006	2007	2008	2009	2010	2011	2012	2013	2014	2015	2016	2017	2018	2019	2020	
<b>1. Ja Ela Basin Stormwater Drainage Plan</b>																			
1) Ja Ela Channel Improvement (B=60m, L=7km)	1,102	D/D			Construction														
2) Dandungam Oya Channel Improvement (B=80m, L=9.9km)	2,342				Procurement														
3) Storm Water Retention Area (Lower Area =500ha, Upper Area=376ha)	235																		
<b>2. Kalu Oya Basin Stormwater Drainage Plan</b>																			
1) Old Negombo Canal Improvement (B=40m, L=4.5km)	648																		
2) Kalu Oya Channel Improvement (B=50m, L=5km)	1,515																		
3) Storm Water Retention Area (Lower Area =360ha, Upper Area=89ha)	300																		
<b>3. Greater Colombo Basin Stormwater Drainage Plan</b>																			
1) Restoration of the Existing Mutwal Tunnel (D=1.8m, L=554m)	86																		
2) Construction of Madiwela South Diversion Canal (B=40m, L=8.8km)	3,361																		
3) New Mutwal Tunnel Construction (D=4m, L=740m)	861																		
4) Storm Water Retention Area (Kolonnawa, Kotte and Heen Marshes and Parliament Lake Area = 380ha in total)	81																		
<b>4. Bolgoda Basin Storm Water Drainage Plan</b>																			
1) Weras Ganga Scheme (B=40m, L=5.5km), Nugegoda-Rattanaipitiya Scheme(5.5km), Bolgoda Scheme (2.4km) and Ratmalana-	3,596																		
2) Boralesgamuwa North (3.1km) . Boralesgamuwa South (1km) and Maha Ela Scheme (4.5km)	713																		
3) Storm Water Retention Area in Weras Ganga Basin (295ha)	793																		
4) Storm Water Retention Area in Lowlands of North and South Bolgoda Lakes	-																		
<b>5. Non-structural Measures</b>																			
1) Storm Water Retention Area Management - Institutional and Legislative Arrangement - Implementation	-																		
2) Development Control in Urban Development Area - Institutional and Legislative Arrangement - Implementation	-																		
3) Land Use Regulation in Lowland Area - Institutional and Legislative Arrangement - Implementation	-																		
4) Dissemination of Flood Information - Institutional and Legislative Arrangement - Implementation	-																		
5) Flood-proofing of buildings in Flood-prone Area	-																		
<b>6. Institutional Development Plan</b>																			
1) Demarcation of Responsibilities on Storm Water Drainage Sector among Related	-																		
2) Lowland Management by SLLRDC - Institutional and Legislative Arrangement - Implementation	-																		
<b>7. Operation and Maintenance Plan</b>																			
1) Organizational Set-up and Staff Arrangement (SLLRDC and Relevant Local Authorities)	-																		
2) Procurement of O&M equipment	-																		
<b>8. Human Resources Development Plan</b>																			
1) Implementation of O&M Training Program for SLLRDC and Local Authorities	-																		
2) Implementation of Overall Training Program for Human Resources Development for Storm Water Drainage Sector	-																		
<i>The Study on Storm Water Drainage Plan for the Colombo Metropolitan Region in the Democratic Socialist Republic of Sri Lanka</i>										図 9.1 洪水対策マスタープラン事業実施全体工程									
JAPAN INTERNATIONAL COOPERATION AGENCY																			