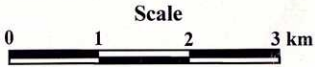


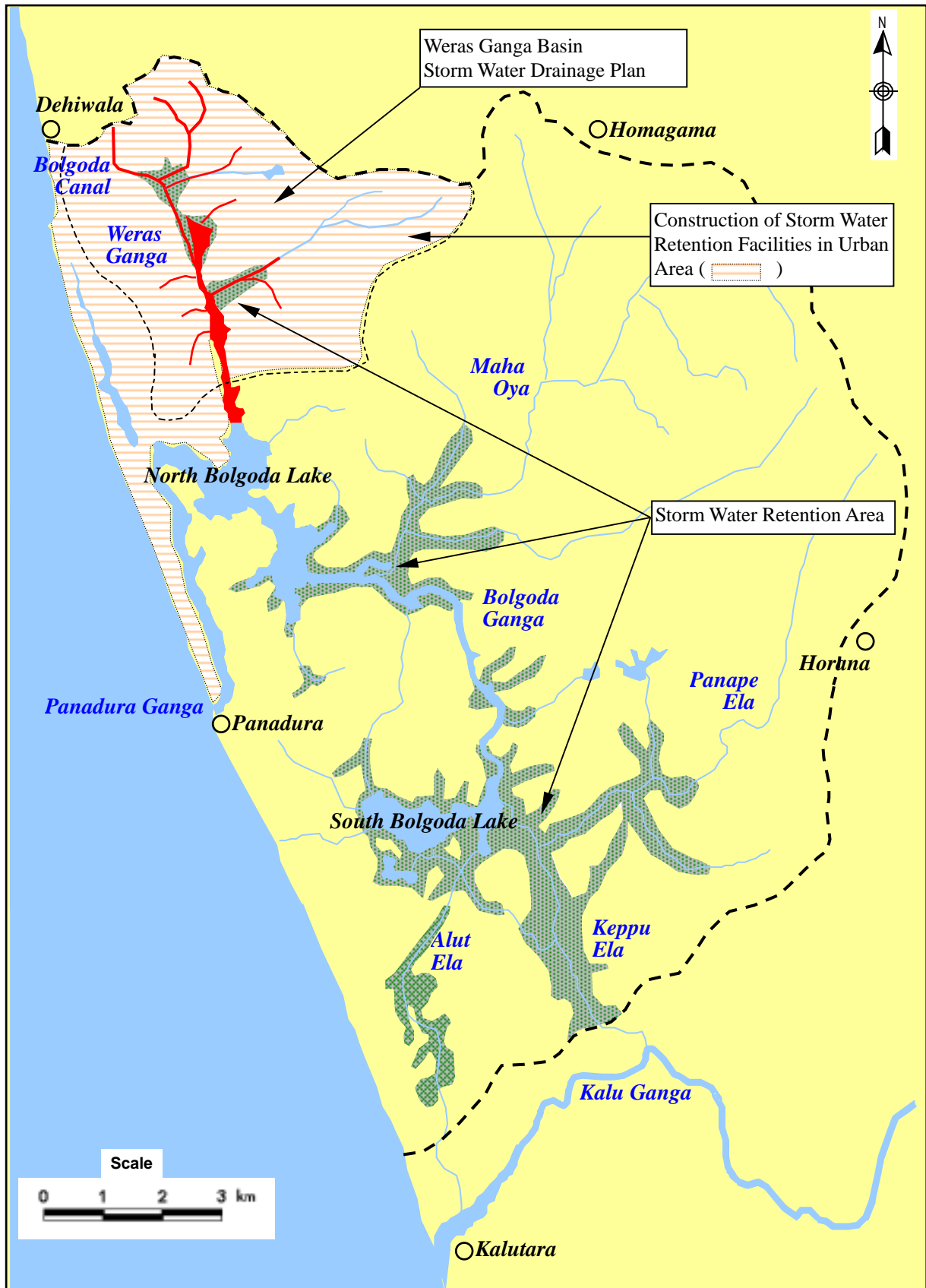
Legend

- River/Canal
- Channel Improvement
- River Basin Boundary
- Storm Water Retention Area
- Proposed Bridge



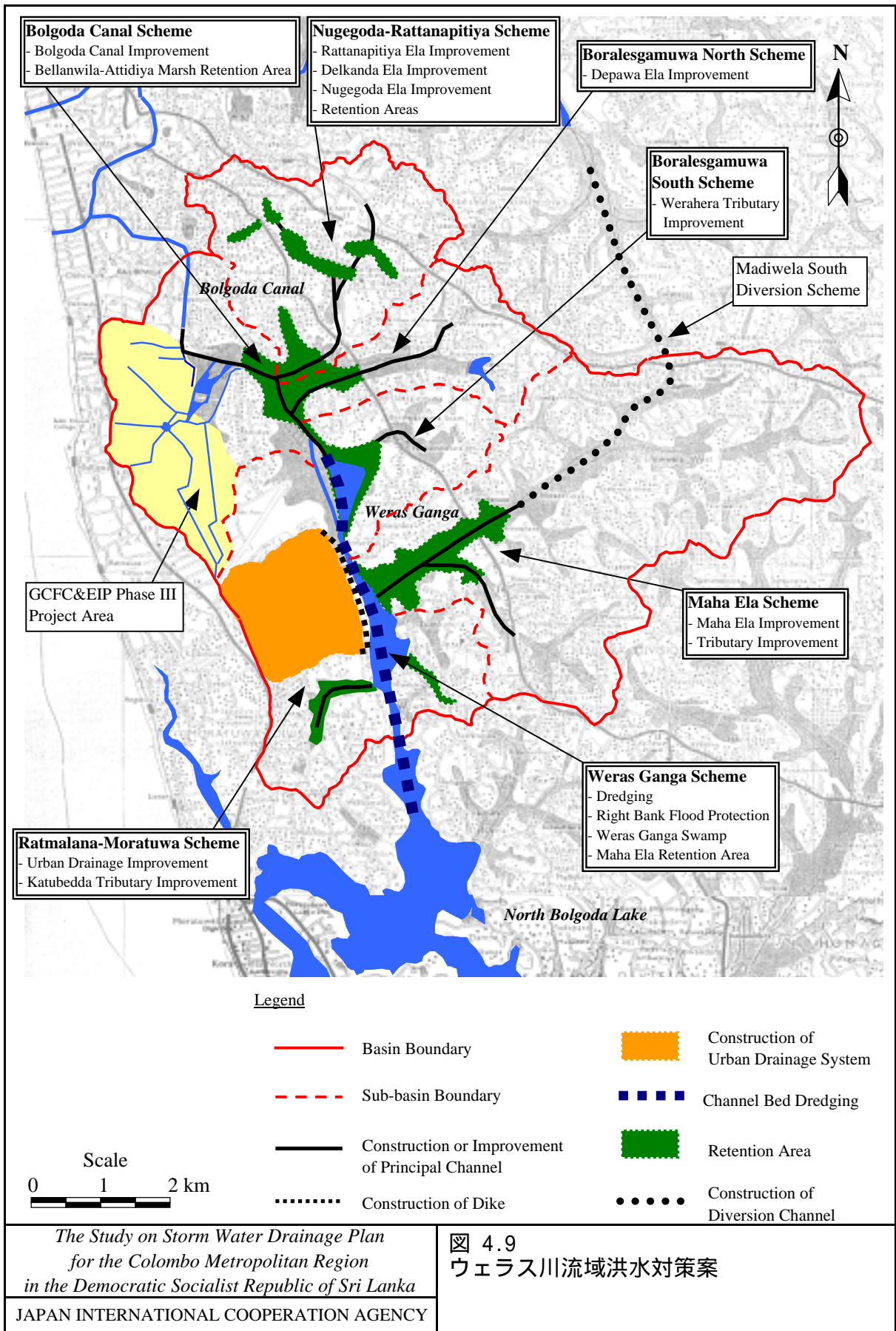
The Study on Storm Water Drainage Plan
for the Colombo Metropolitan Region
in the Democratic Socialist Republic of Sri Lanka
JAPAN INTERNATIONAL COOPERATION AGENCY

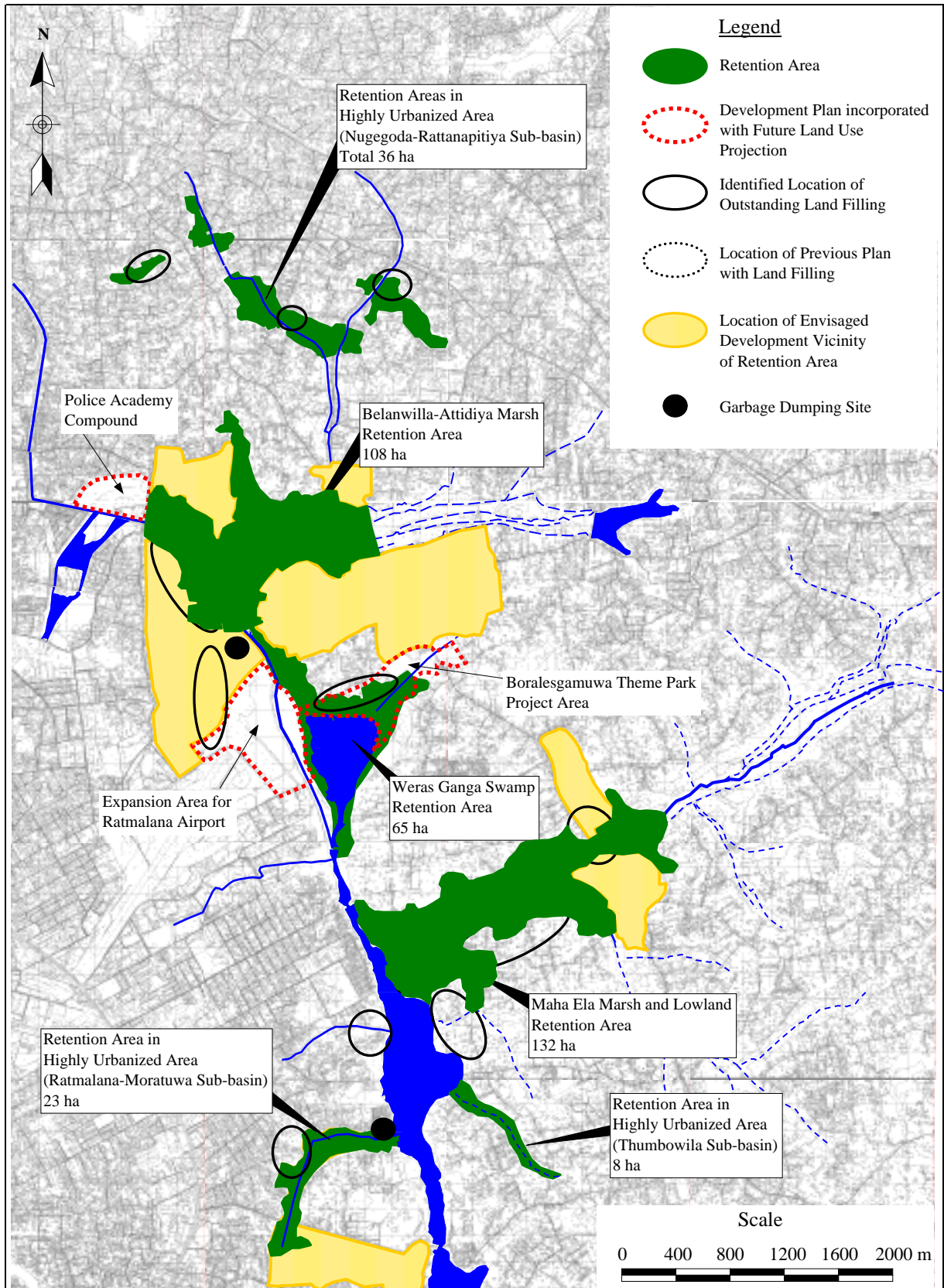
図 4.7 大コロombo流域洪水対策計画



The Study on Storm Water Drainage Plan
for the Colombo Metropolitan Region
in the Democratic Socialist Republic of Sri Lanka
JAPAN INTERNATIONAL COOPERATION AGENCY

図 4.8
ボルゴダ流域洪水対策案

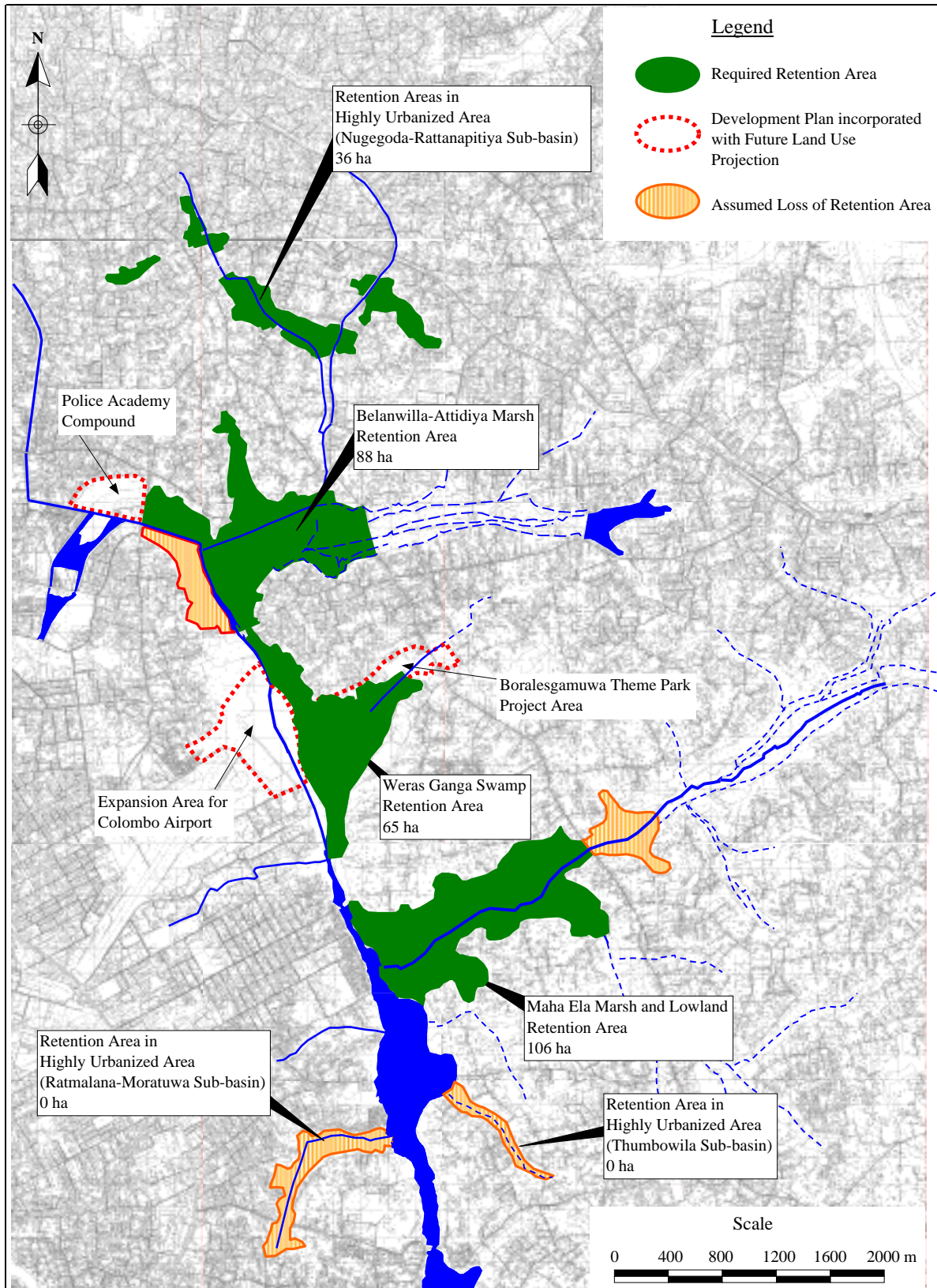




The Study on Storm Water Drainage Plan
for the Colombo Metropolitan Region
in the Democratic Socialist Republic of Sri Lanka

JAPAN INTERNATIONAL COOPERATION AGENCY

図 4.10
将来土地利用下での遊水区域



The Study on Storm Water Drainage Plan
for the Colombo Metropolitan Region
in the Democratic Socialist Republic of Sri Lanka

JAPAN INTERNATIONAL COOPERATION AGENCY

図 4.11
必要遊水区域