

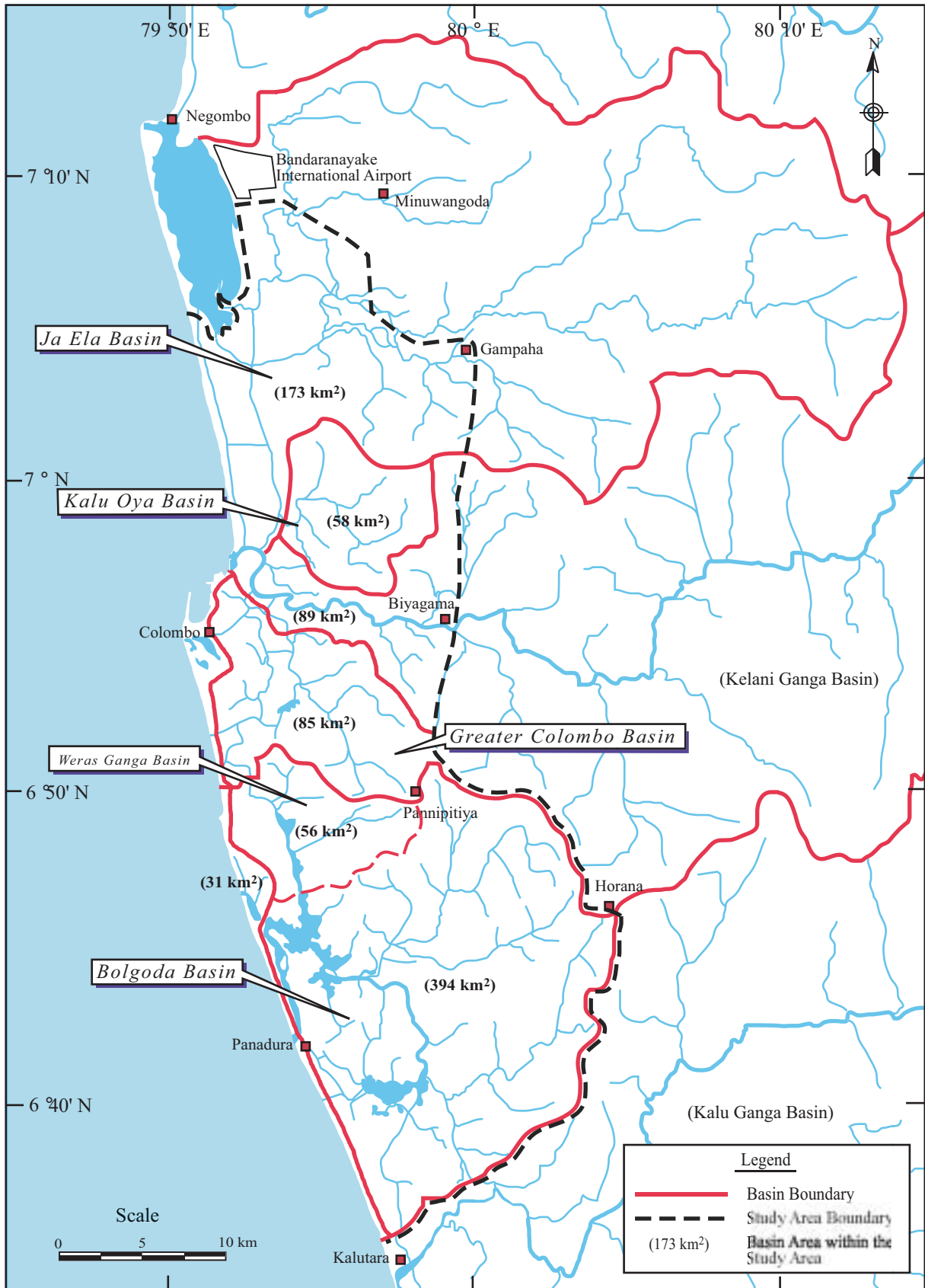
付 表

表 10.1 優先事業選定のための総合評価

Component Project	Economic Viability		Project Cost	Technical Viability	Land Acquisition	Resettlement (household)	Poor Household Rate	Environmental Impact	Future Land Use of Area	Overall Evaluation
	B/C	EIRR								
1. Ja Ela Basin Storm Water Drainage Plan										
1) Ja Ela Channel Improvement										
2) Dandugam Oya Channel Improvement	B (1.34)	B (12.9%)	B (3,679)	A	C+C (50 ha+ 876 ha*)	C (570**)	A (37%)	B	B (Semi Urban)	C
3) Storm Water Retention Areas										
2. Kalu Oya Basin Storm Water Drainage Plan										
1) Kalu Oya Channel Improvement										
2) Old Negombo Canal Improvement	A (1.94)	A (17.4%)	A (2,463)	A	C+B (30 ha+ 489 ha*)	C (730**)	A (37%)	B	A (Urban)	B
3) Storm Water Retention Areas										
3. Greater Colombo Basin Storm Water Drainage Plan										
1) Madiwela South Diversion Canal										
2) Restoration of Existing Mutwal Tunnel	A (2.23)	A (19.5%)	B (4,389)	A, B	C+B (25 ha+ 380 ha*)	C (1,050**)	B (24%)	B	A (Urban)	B
3) New Mutwal Tunnel										
4) Storm Water Retention Areas										
4. Bolgoda Basin Storm Water Drainage Plan (Weras Ganga Basin)										
1) Weras Ganga Scheme										
2) Nugegoda-Rattapitiya Scheme										
3) Bolgoda Canal Scheme										
4) Boralessgamuwa North Scheme	A (2.22)	A (19.2%)	C (5,102)	A	A+A (31 ha+ 295 ha*)	A (158)	A (35%)	A	A (Urban- Weras Ganga Basin)	A
5) Boralessgamuwa South Scheme										
6) Maha Ela Scheme										
7) Ratmalana-Moratuwa Scheme										

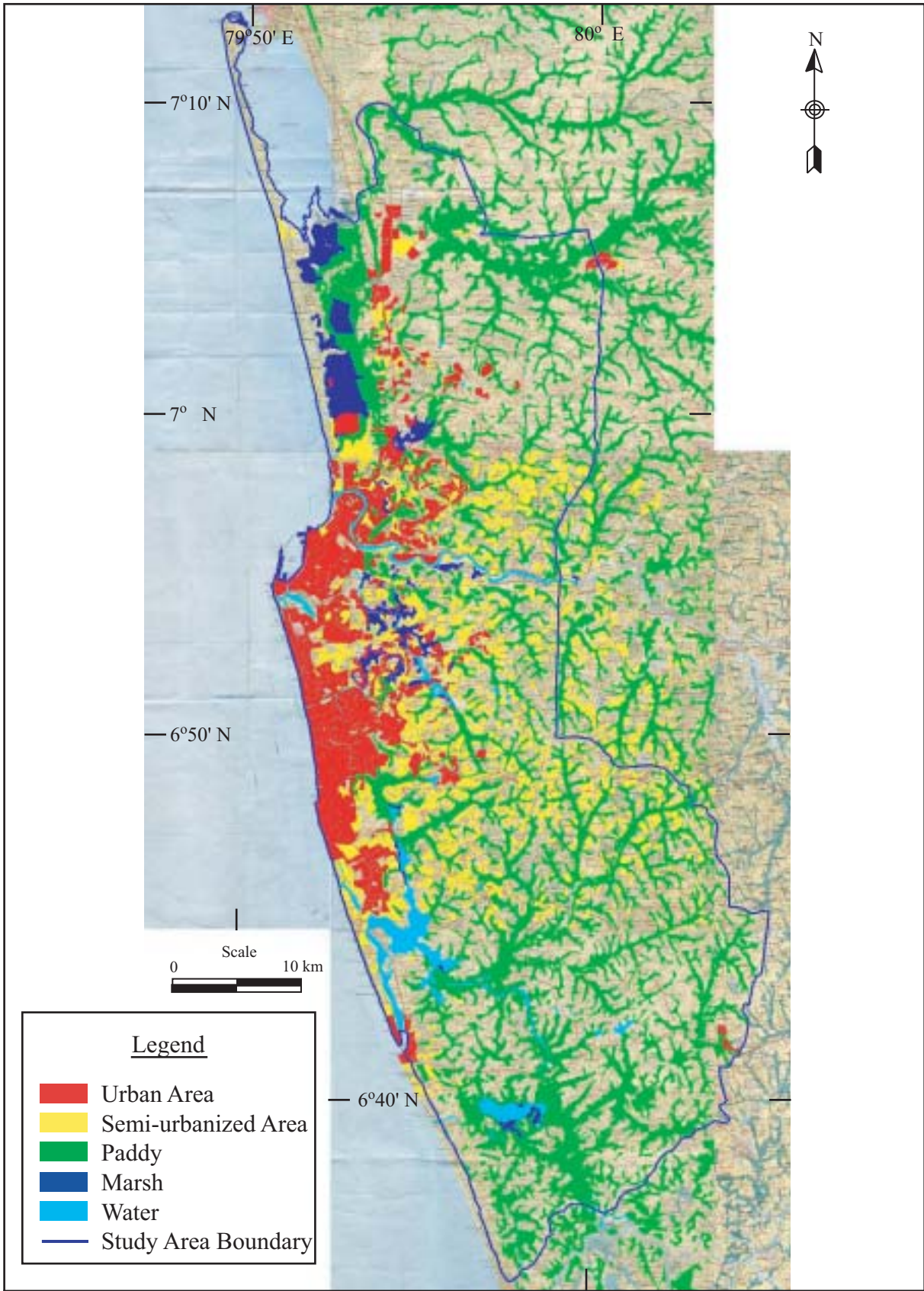
Note: * area for storm water retention area, ** number of households living in riparian area

付 図



The Study on Storm Water Drainage Plan
for the Colombo Metropolitan Region
in the Democratic Socialist Republic of Sri Lanka
JAPAN INTERNATIONAL COOPERATION AGENCY

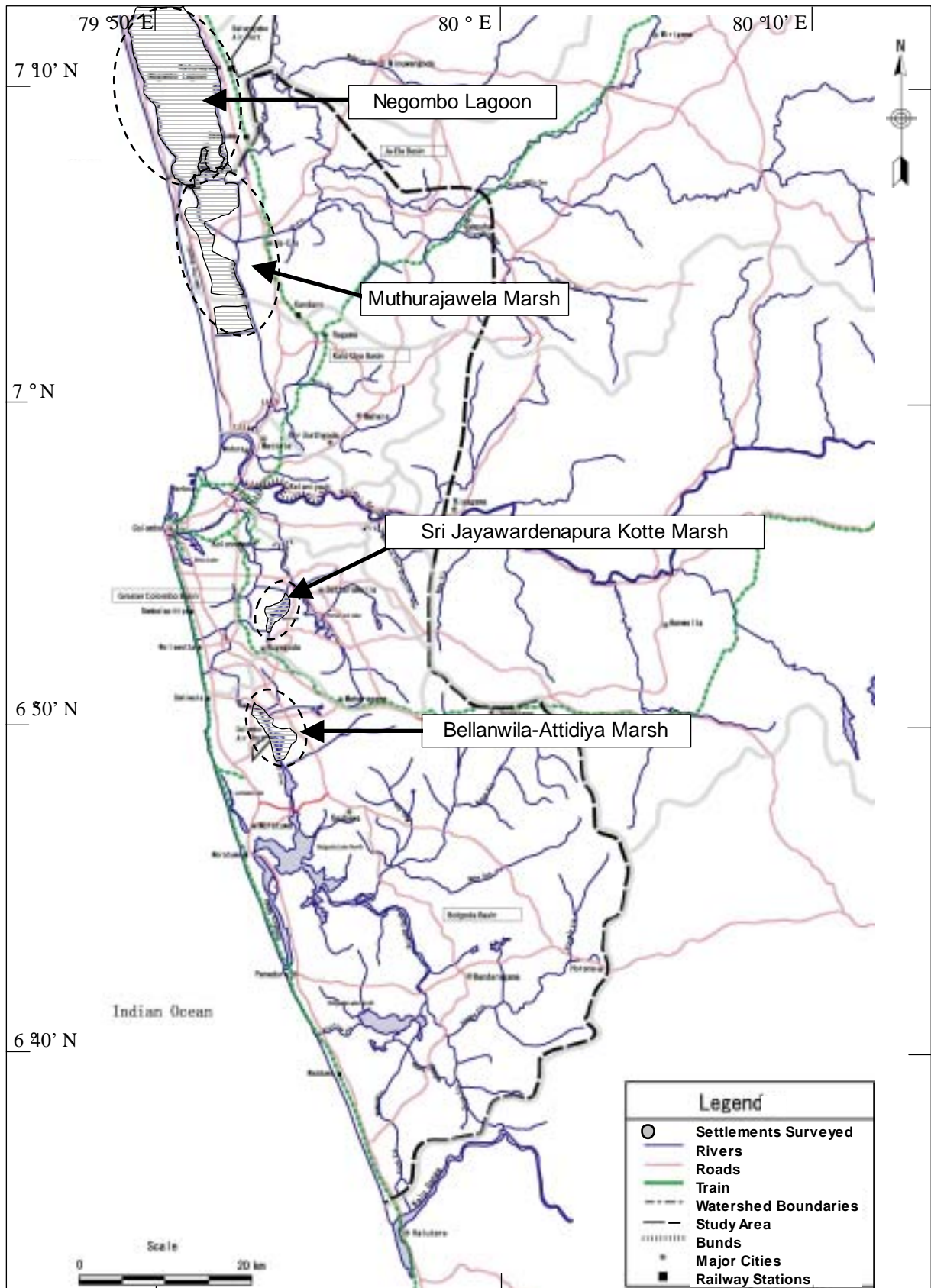
図 1.1
調査対象地域位置図



*The Study on Storm Water Drainage Plan
for the Colombo Metropolitan Region
in the Democratic Socialist Republic of Sri Lanka*

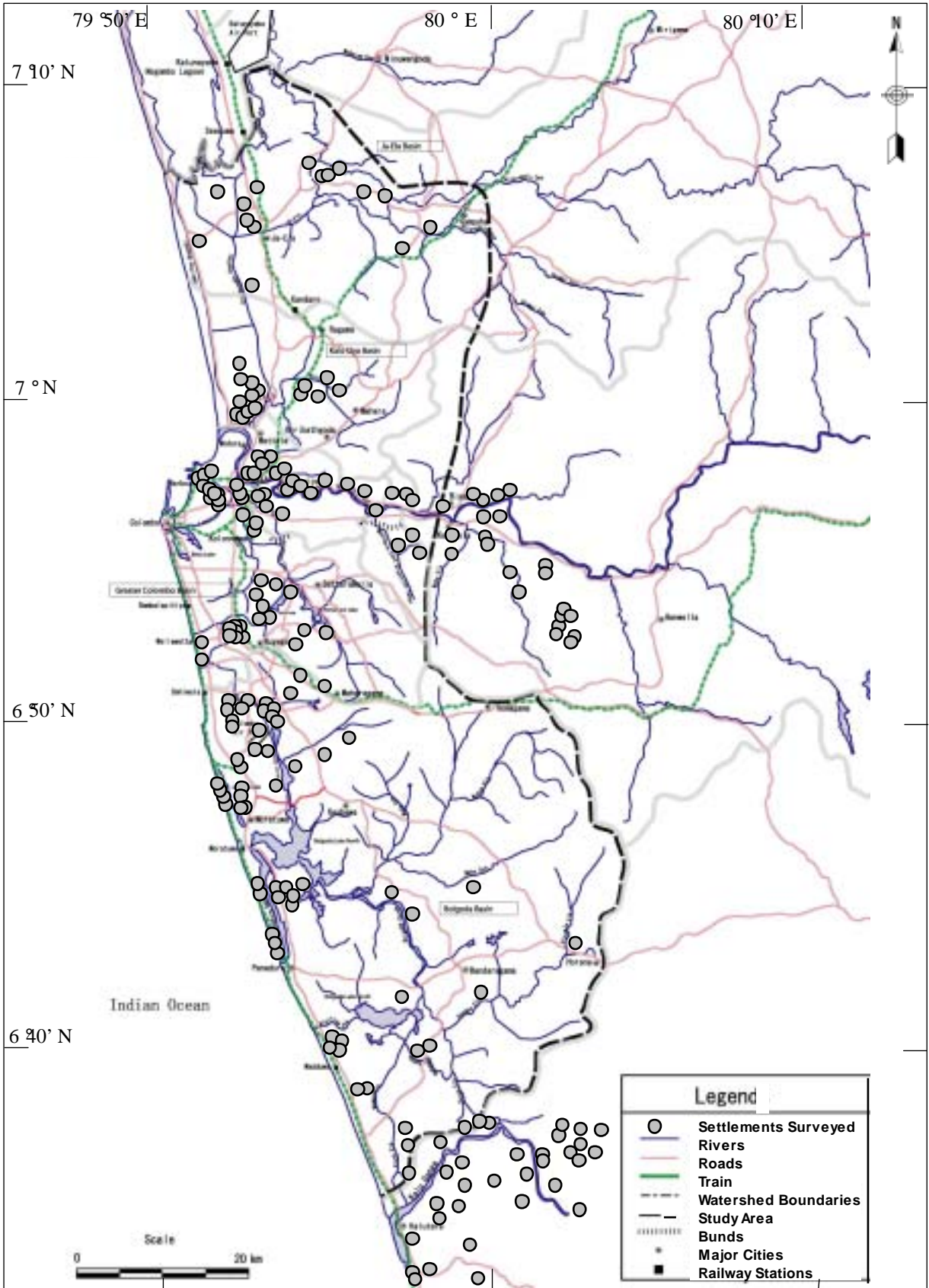
JAPAN INTERNATIONAL COOPERATION AGENCY

図 2.1
調査対象地域現況土地利用



*The Study on Storm Water Drainage Plan
for the Colombo Metropolitan Region
in the Democratic Socialist Republic of Sri Lanka*
JAPAN INTERNATIONAL COOPERATION AGENCY

図 2.2
環境保全地域位置図



*The Study on Storm Water Drainage Plan
for the Colombo Metropolitan Region
in the Democratic Socialist Republic of Sri Lanka*

図 2.3
洪水常襲地区および低所得地区位置図

JAPAN INTERNATIONAL COOPERATION AGENCY

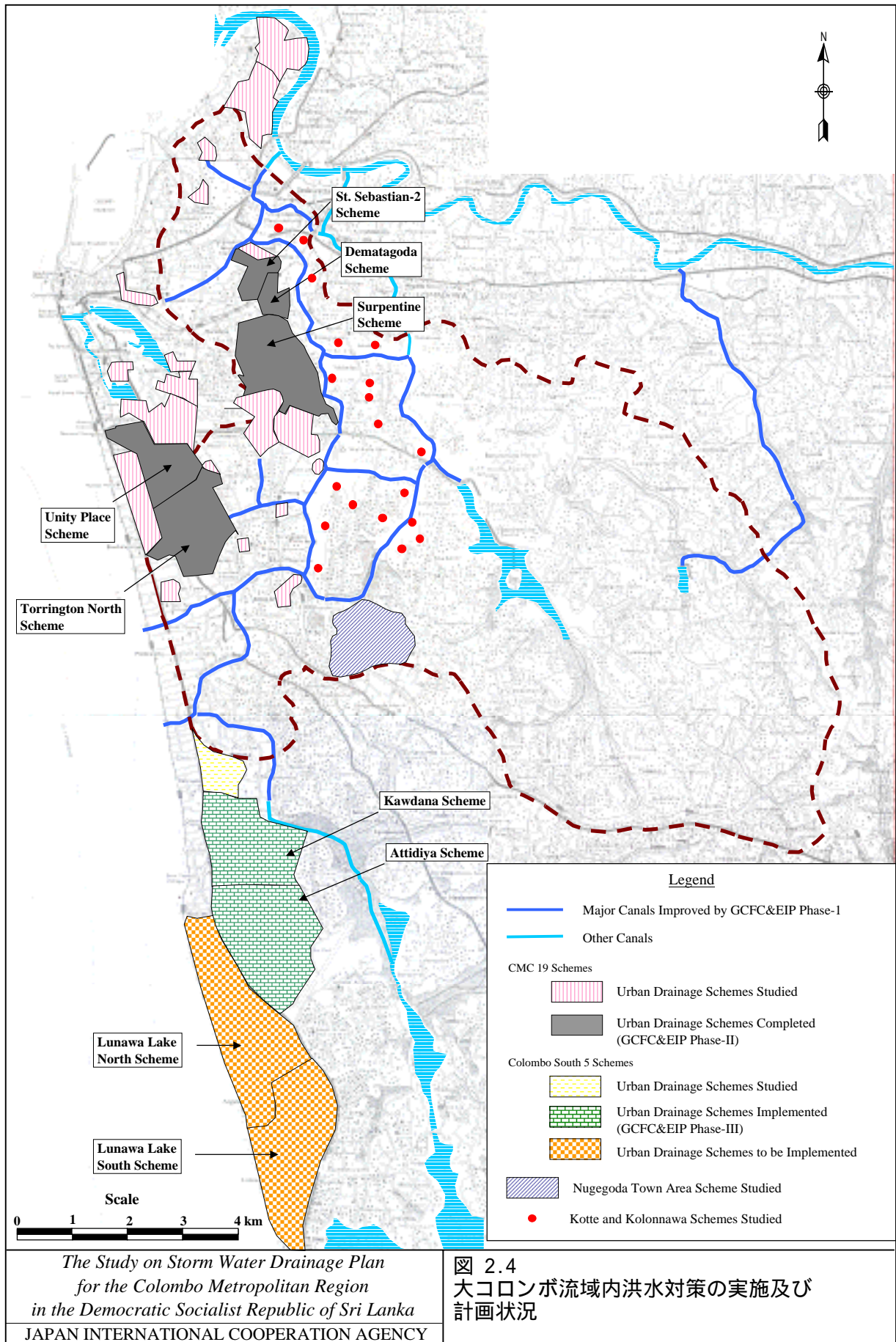
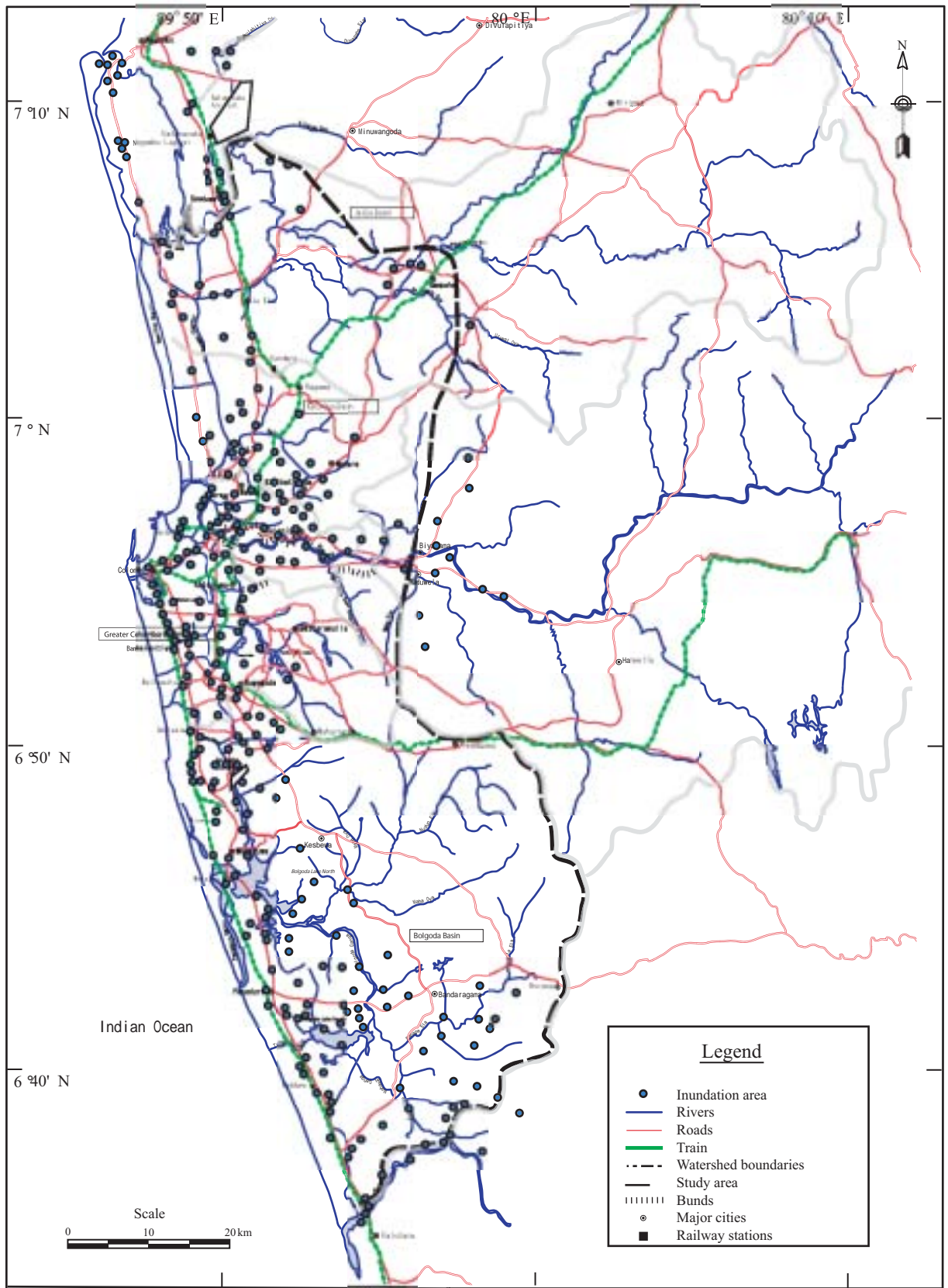


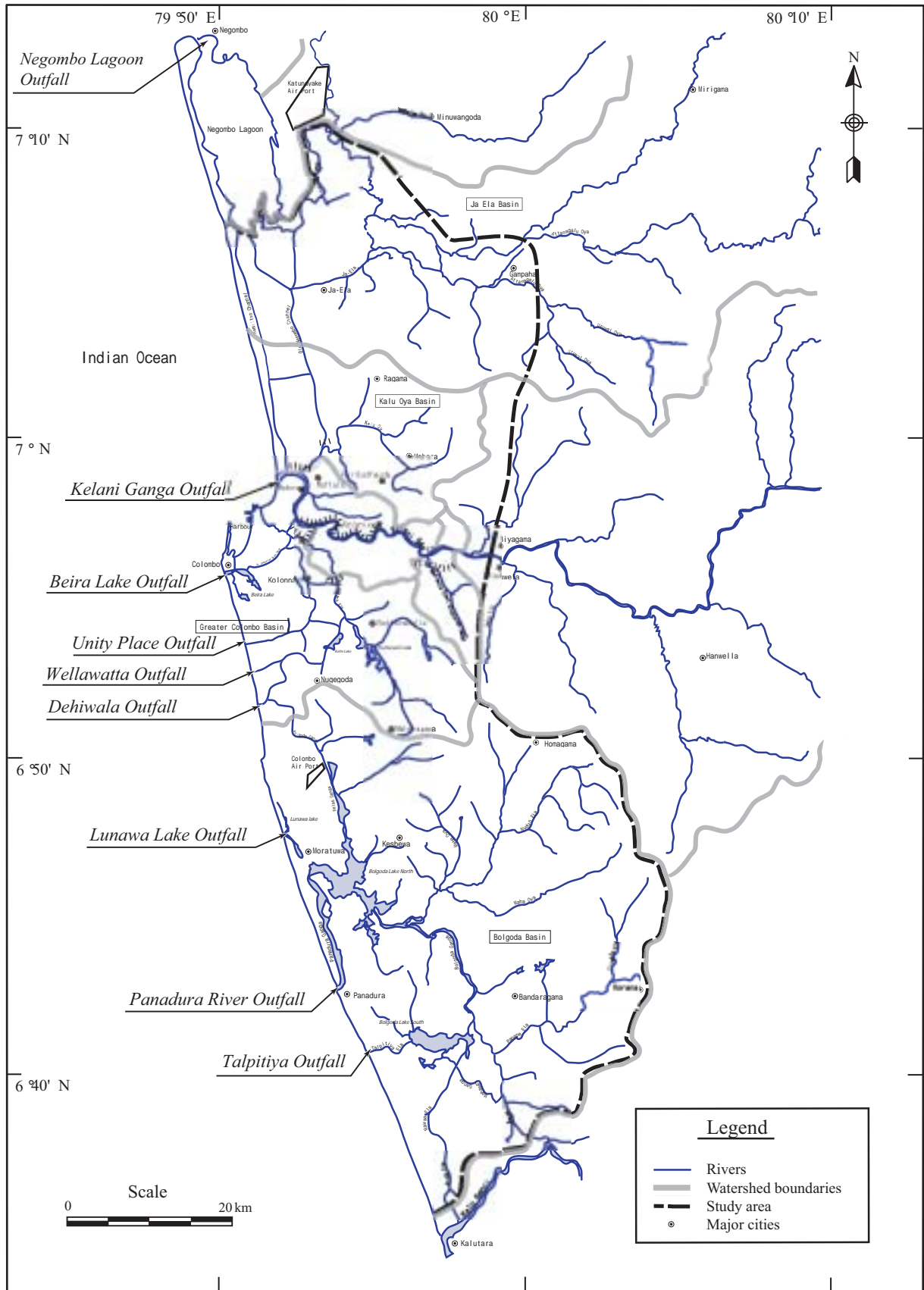
図 2.4
大コロombo流域内洪水対策の実施及び
計画状況



*The Study on Storm Water Drainage Plan
for the Colombo Metropolitan Region
in the Democratic Socialist Republic of Sri Lanka*

図 2.5
調査対象地域内浸水地区位置図

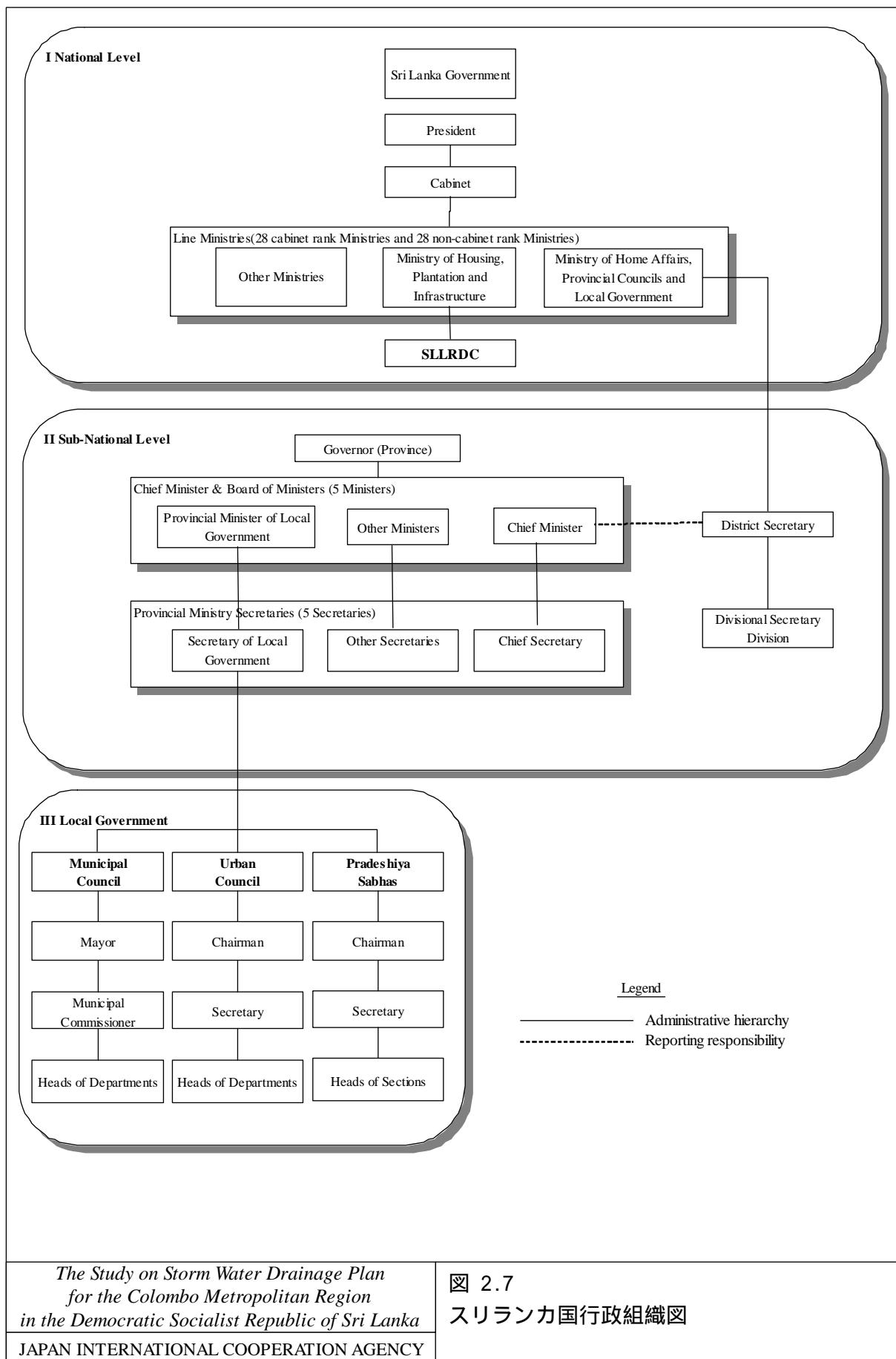
JAPAN INTERNATIONAL COOPERATION AGENCY



The Study on Storm Water Drainage Plan
for the Colombo Metropolitan Region
in the Democratic Socialist Republic of Sri Lanka

JAPAN INTERNATIONAL COOPERATION AGENCY

図 2.6
沿岸部河口位置図

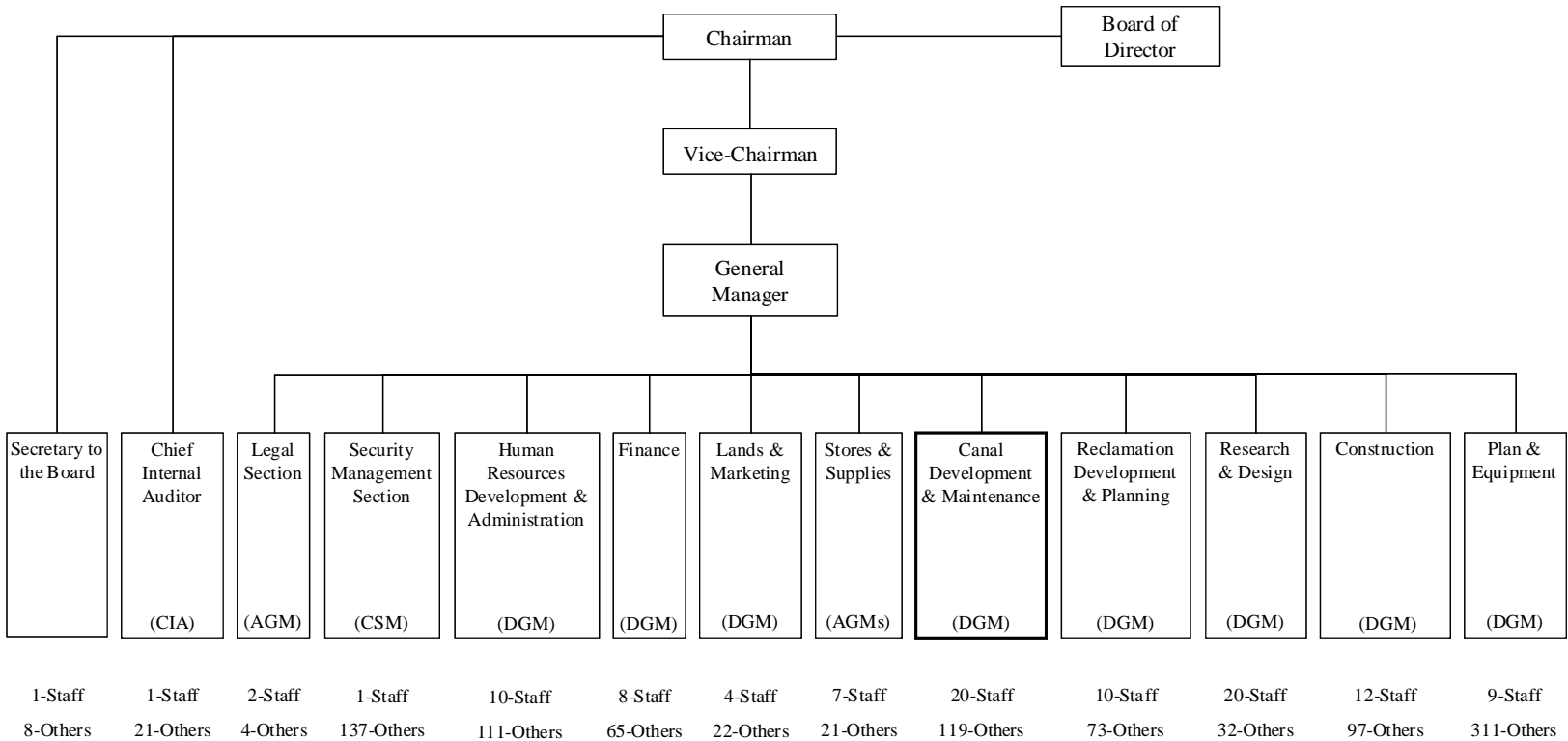


*The Study on Storm Water Drainage Plan
for the Colombo Metropolitan Region
in the Democratic Socialist Republic of Sri Lanka*

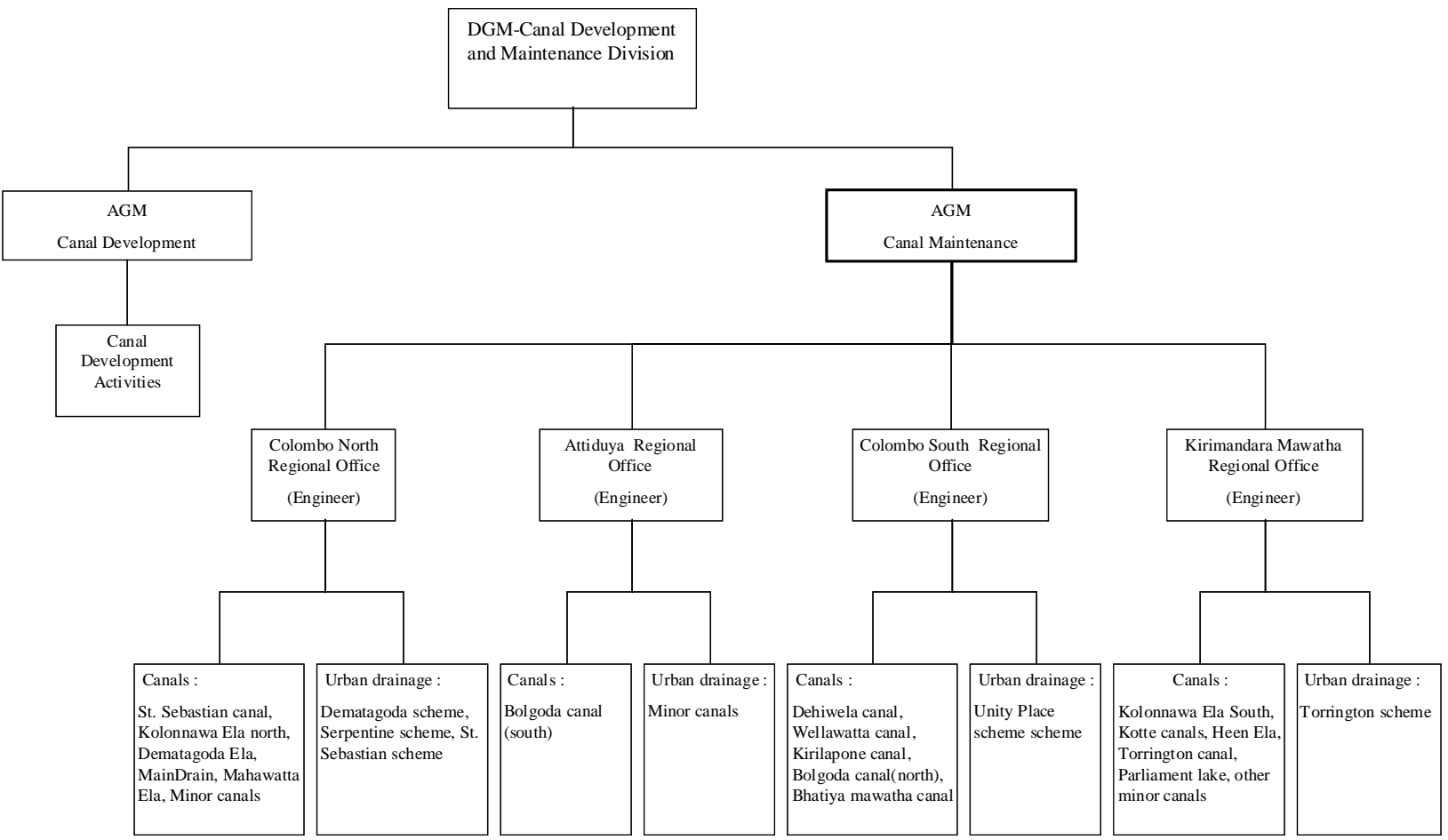
JAPAN INTERNATIONAL COOPERATION AGENCY

図 2.7
スリランカ国行政組織図

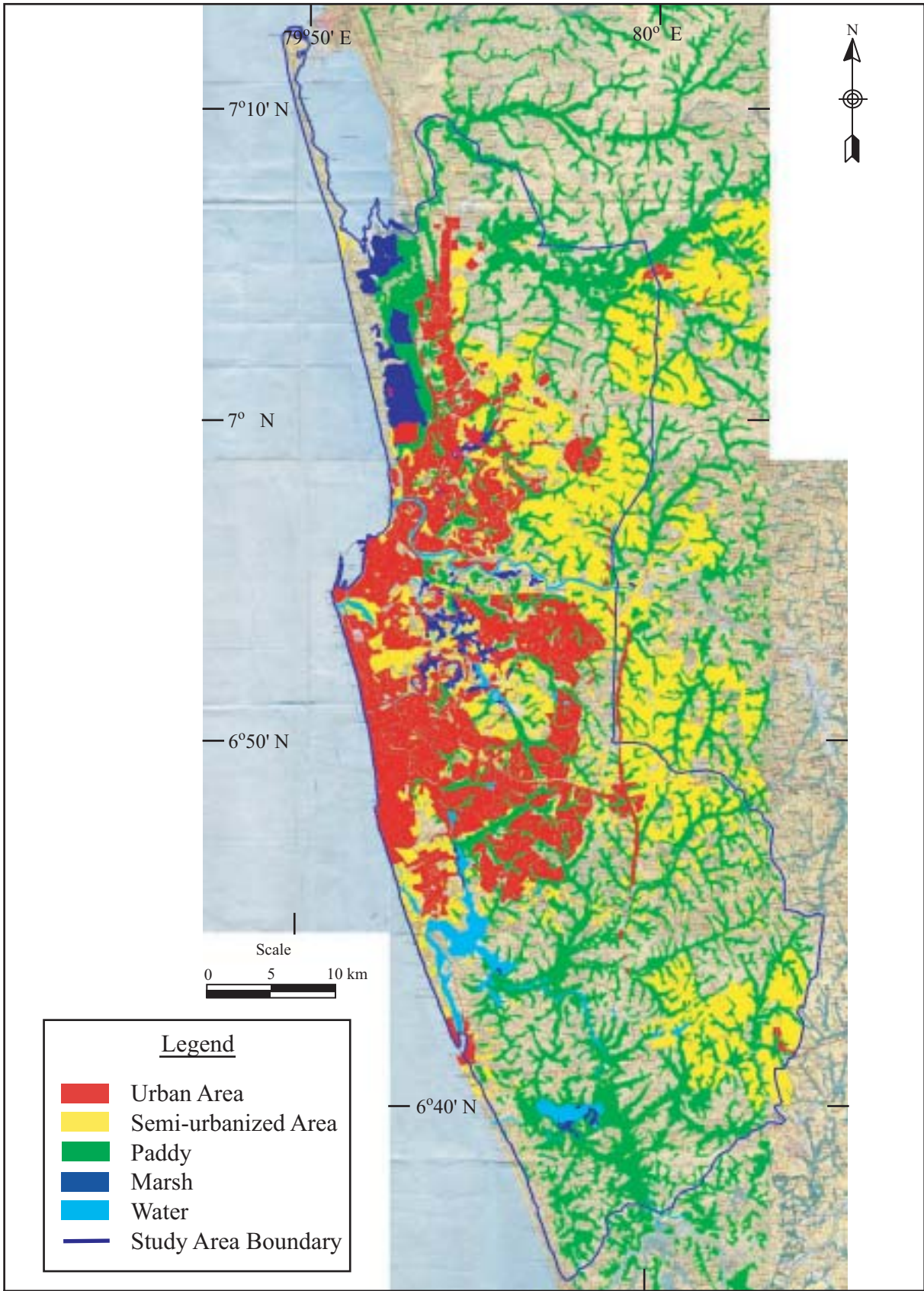
2.8
SLLRDC 組織図



Notes:
DGM: Deputy General Manager
AGM: Assistant General Manager
CIA: Chief Internal Auditor
CSM: Chief Security Manager

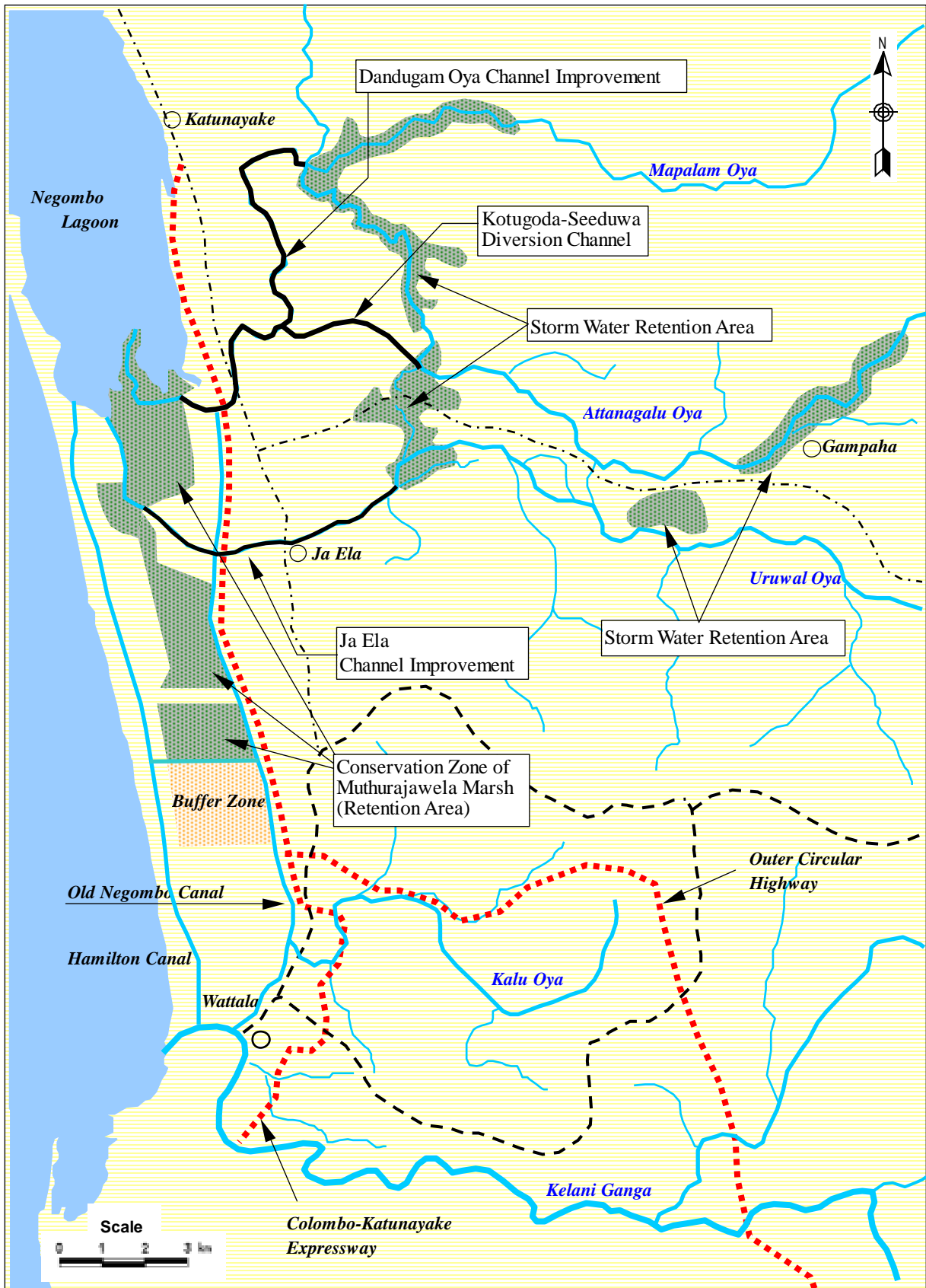


Notes:
DGM: Deputy General Manager
AGM: Assistant General Manager



*The Study on Storm Water Drainage Plan
for the Colombo Metropolitan Region
in the Democratic Socialist Republic of Sri Lanka*
JAPAN INTERNATIONAL COOPERATION AGENCY

図 4.1
調査対象地域内将来土地利用想定図



The Study on Storm Water Drainage Plan
for the Colombo Metropolitan Region
in the Democratic Socialist Republic of Sri Lanka
JAPAN INTERNATIONAL COOPERATION AGENCY

図 4.2
ジャエラ流域洪水対策案