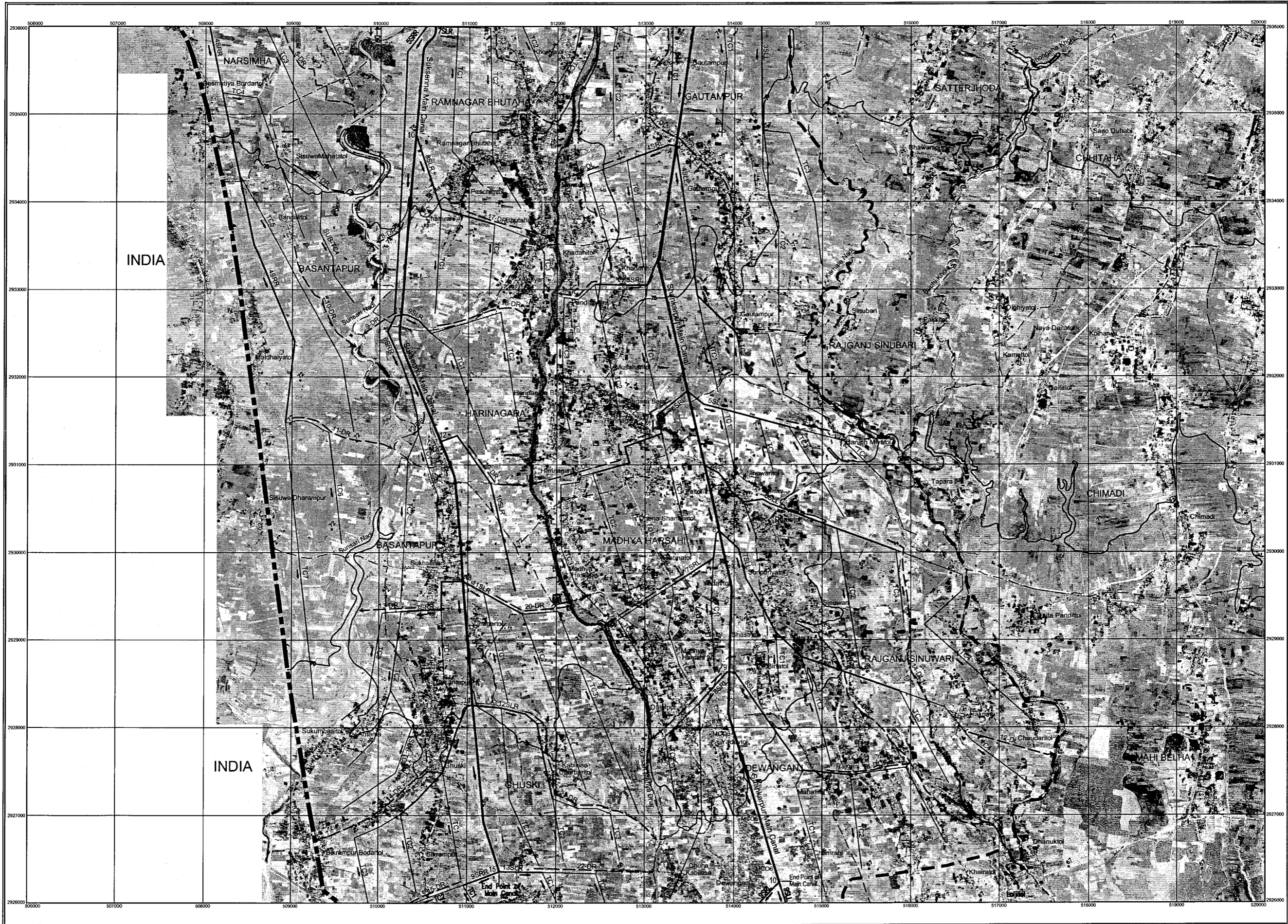
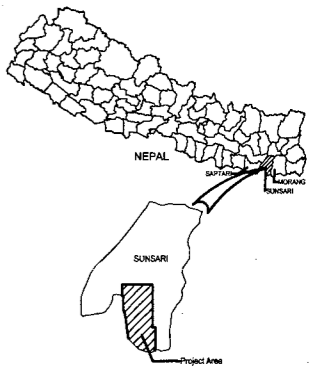


ORTHO PHOTO OF SUNSARI RIVER IRRIGATION PROJECT



LEGEND

- Main canal
- Secondary canal
- Tertiary canal
- Drainage
- Main canal outlet
- Project Boundary
- International Boundary
- VDC / Municipal Boundary
- Contour
- Spot Height
- VDC / Municipality **DEWANGAN**
- Name of places **Jalpapur**

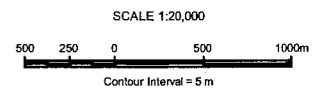


HORIZONTAL DATUM

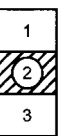
Spheroid: Everest 1830
 Projection: Modified Universal Transverse Mercator
 Origin: Longitude 87° East, Latitude 0° North
 False co-ordinates of origin: 500 000 m Easting, 0 m Northing
 Scale factor at Central Meridian: 0.9999

NOTES

1. This ortho-photo is prepared from 1:50,000 scale Aerial Photograph of 1992.
2. Contours and Spot Heights are from 1:25,000 Topographical Map of 1996.



INDEX TO SHEETS

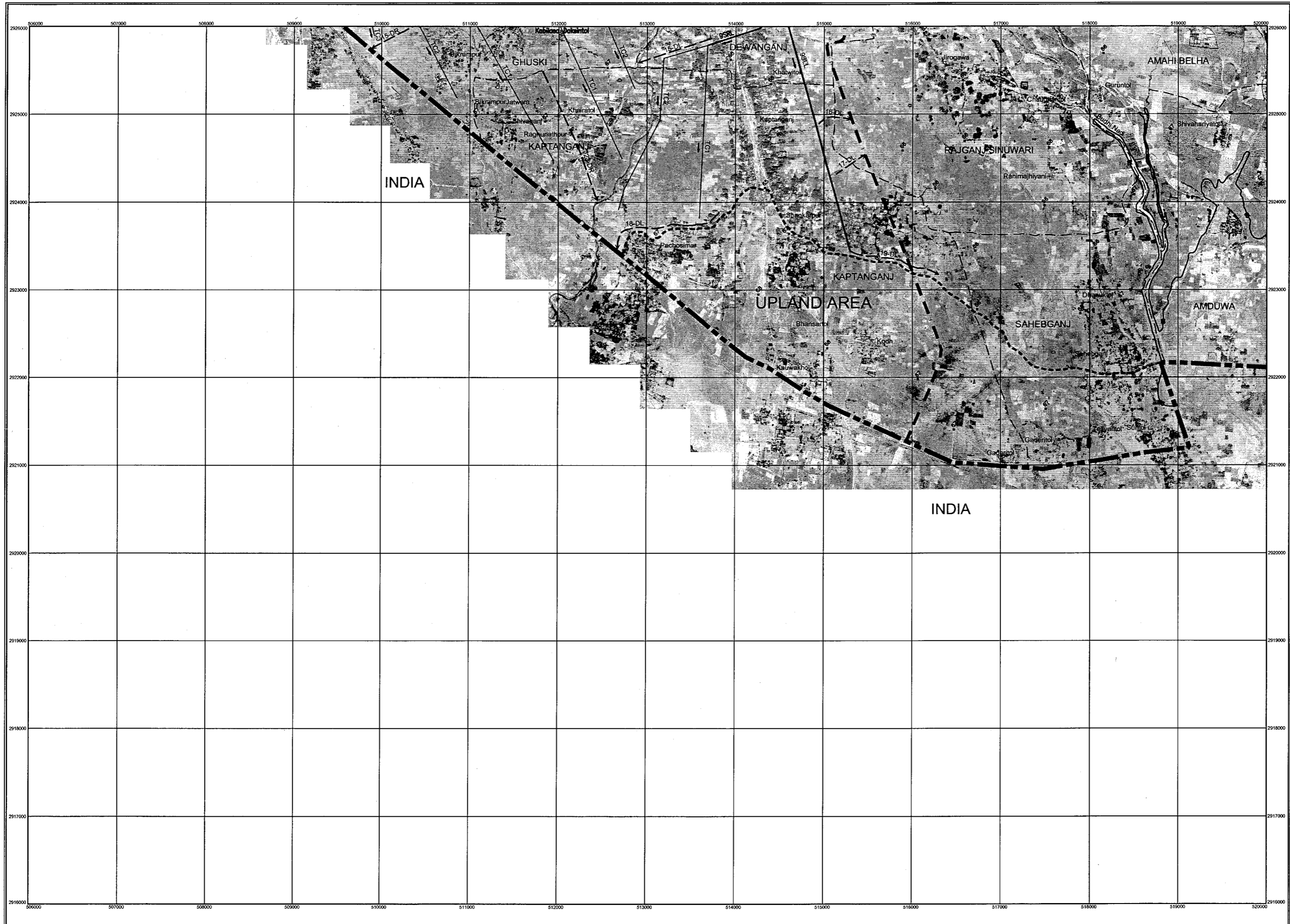


SANYU CONSULTANTS INC.

FOREFRONT TOWER II
 KACHIDOKI 3-13-1, CHUO-KU
 TOKYO 104-0054, JAPAN
 TEL: 81-3-3536-2485
 FAX: 81-3-3536-2492

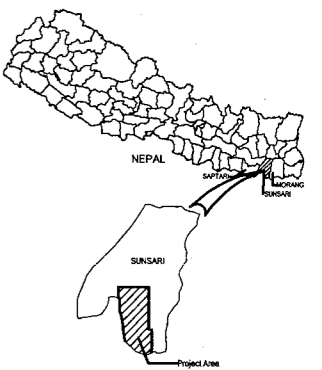
THE FEASIBILITY STUDY ON THE SUNSARI IRRIGATION PROJECT IN THE KINGDOM OF NEPAL	TITLE OF DRAWING	IRRIGATION AND DRAINAGE CANAL NETWORK
JAPAN INTERNATIONAL COOPERATION AGENCY	DRAWING No.	GP-2

ORTHO PHOTO OF
SUNSARI RIVER IRRIGATION PROJECT



LEGEND

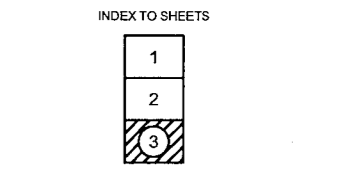
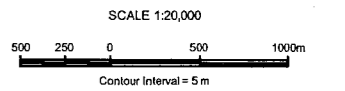
Main canal	
Secondary canal	
Tertiary canal	
Drainage	
Main canal outlet	
Project Boundary	
International Boundary	
VDC / Municipal Boundary	
Contour	
Spot Height	
VDC / Municipality	DEWANGANJ
Name of places	Jalpapur



HORIZONTAL DATUM

Spheroid: Everest 1830
 Projection: Modified Universal Transverse Mercator
 Origin: Longitude 87° East, Latitude 0° North
 False co-ordinates of origin: 500 000 m Easting, 0 m Northing
 Scale factor of Central Meridian: 0.9999

- NOTES**
1. This ortho-photo is prepared from 1:50,000 scale Aerial Photograph of 1992.
 2. Contours and Spot Heights are from 1:25,000 Topographical Map of 1996.



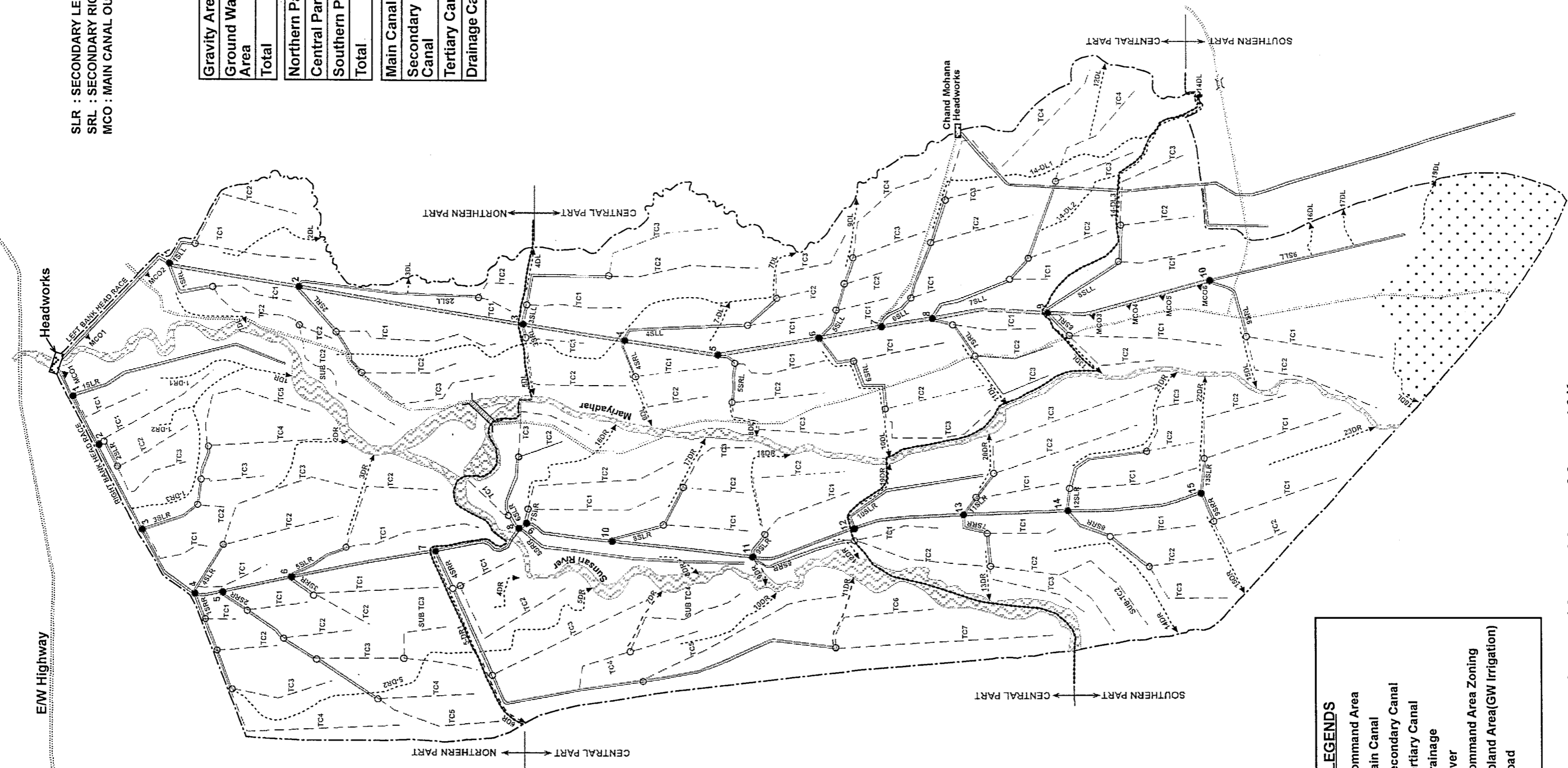
SANYU CONSULTANTS INC.
 FOREFRONT TOWER 6
 KACHIDORI 3-13-1, CHUO-KU
 TOKYO 104-0054, JAPAN
 TEL: 81-3-3536-2493
 FAX: 81-3-3536-2492

THE FEASIBILITY STUDY ON THE SUNSARI IRRIGATION PROJECT IN THE KINGDOM OF NEPAL	TITLE OF DRAWING	IRRIGATION AND DRAINAGE CANAL NETWORK
JAPAN INTERNATIONAL COOPERATION AGENCY DRAWING NO.		OP-3

IRRIGATION AND DRAINAGE CANAL NETWORK

SLR : SECONDARY LEFT RIGHT BANK
 SRL : SECONDARY RIGHT LEFT BANK
 MCO : MAIN CANAL OUTLET

Gravity Area	10,147ha
Ground Water Area	397ha
Total	10,544ha
Northern Part	2,926ha
Central Part	4,518ha
Southern Part	3,100ha
Total	10,544ha
Main Canal	36,830m
Secondary Canal	60,520m
Tertiary Canal	172,410m
Drainage Canal	66,350m



LEGENDS

- Command Area
- Main Canal
- - - Secondary Canal
- · · Tertiary Canal
- · - Drainage
- ~ River
- Command Area Zoning
- · · Upland Area(GW Irrigation)
- Road

THE FEASIBILITY STUDY ON THE SUNSARI RIVER IRRIGATION PROJECT IN THE KINGDOM OF NEPAL	TITLE OF DRAWING	IRRIGATION AND DRAINAGE CANAL NETWORK
JAPAN INTERNATIONAL COOPERATION AGENCY	DRAWING No.	GP-4