

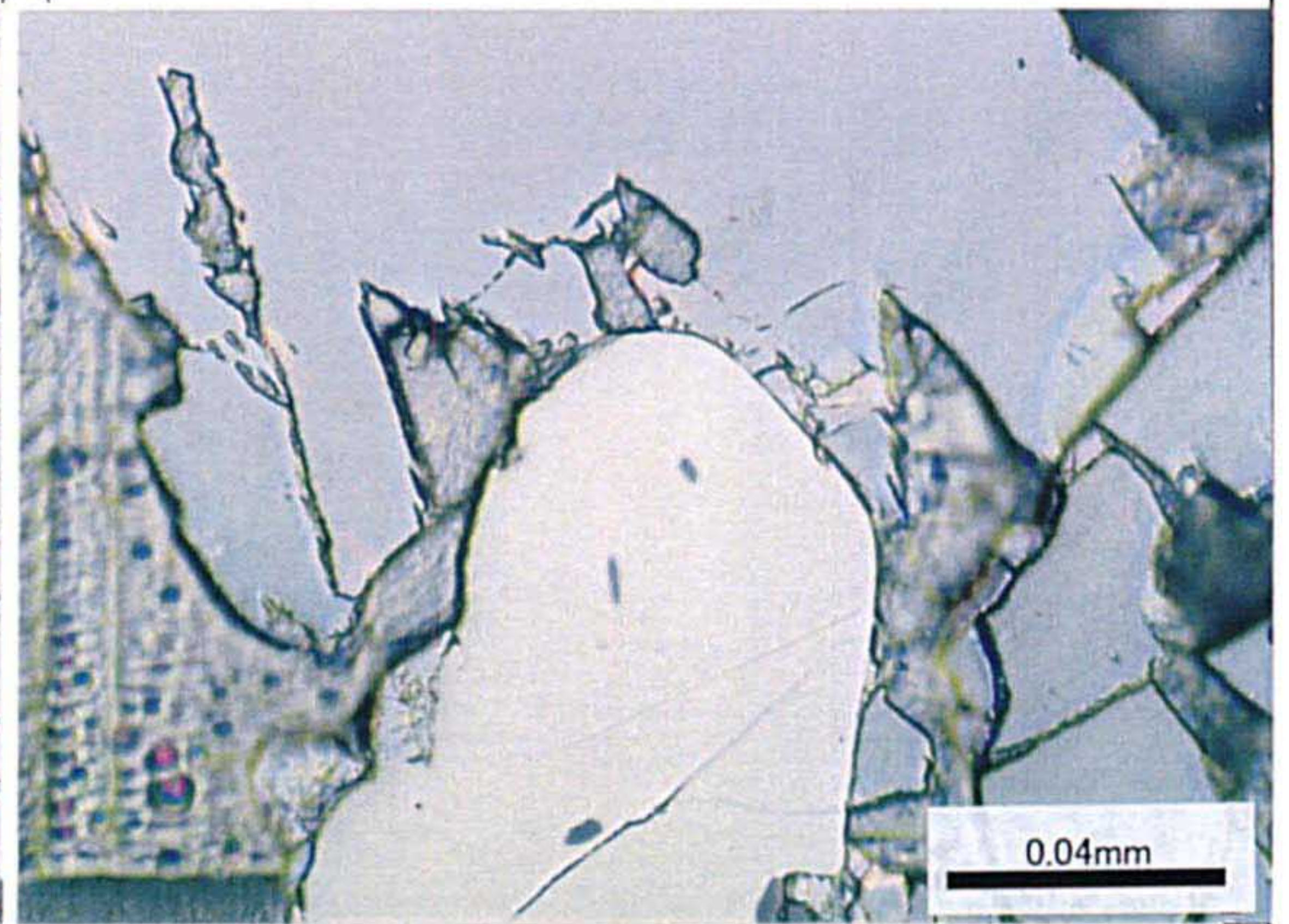
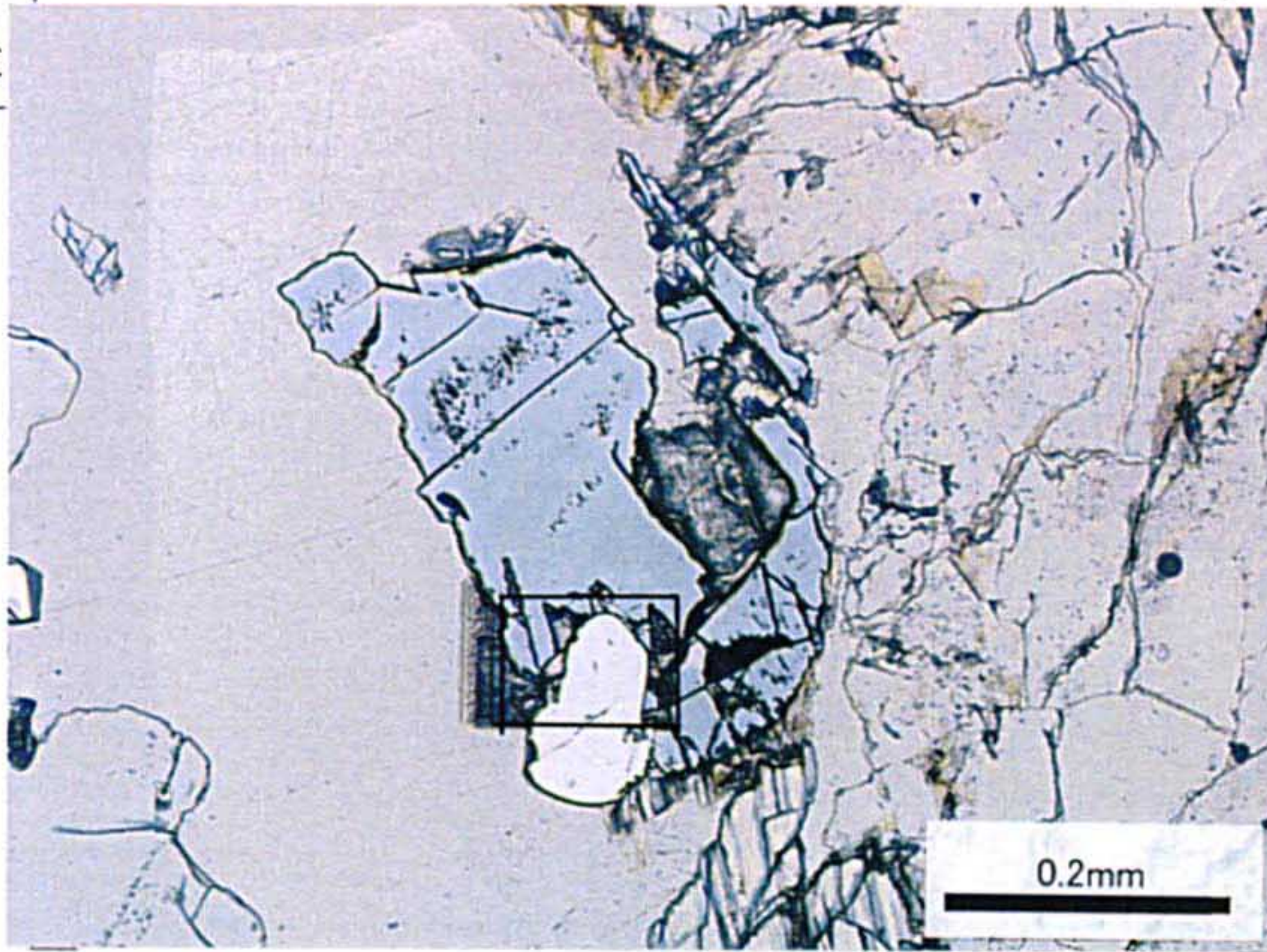
Appendix 2-8 Photomicrographs of EPMA

EPMA試験結果

Magnetite・Hematite
from G 378

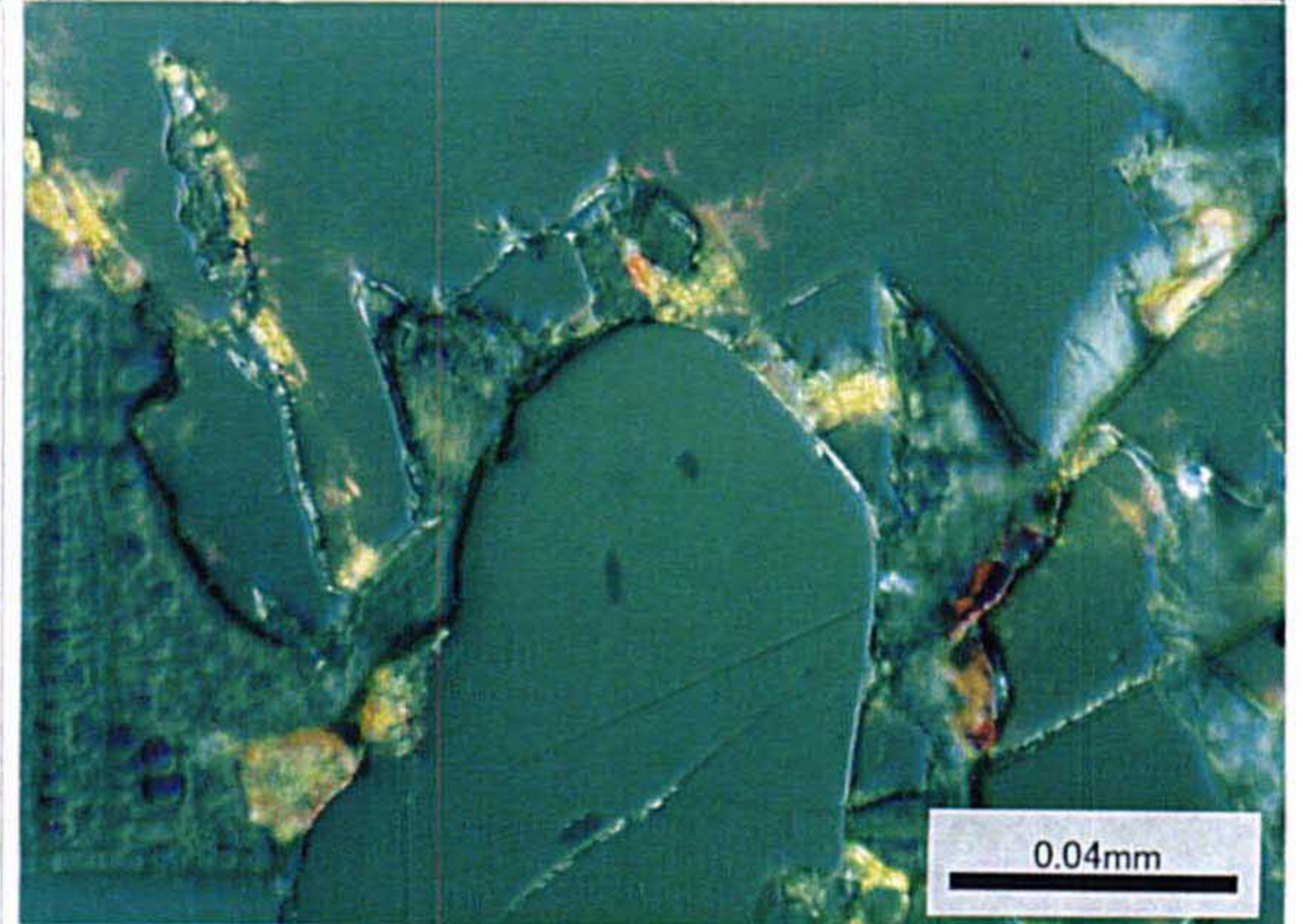
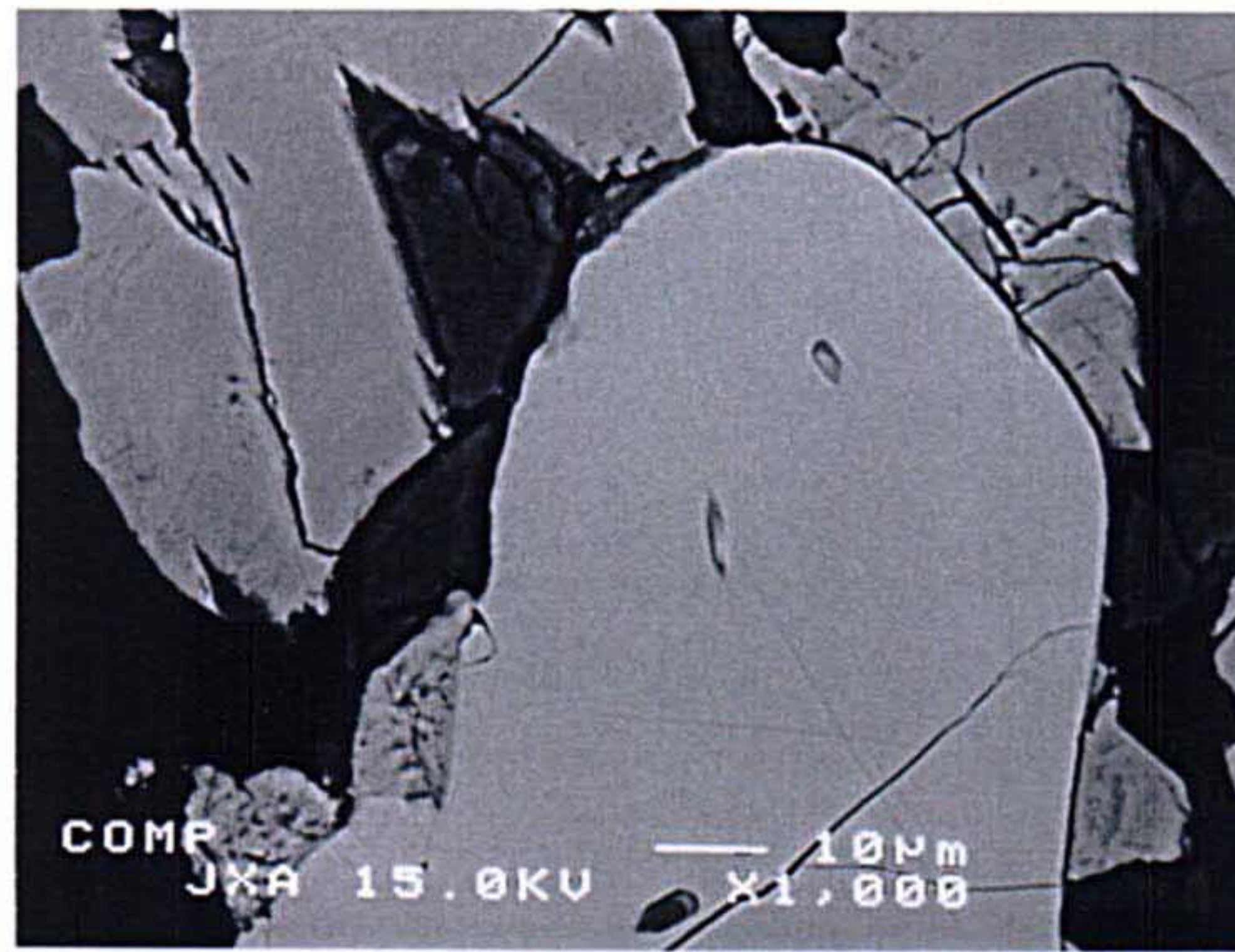
受付番号	1
試料名	
加速電圧	15 KV
電子線電流	0.05 μ A
倍率	$\times 1000$
測定年月日	

備考:



*撮影フィルム控

Polished section Reflected light	Polished section Reflected light
組成像	Polished section Reflected light crossed nicols



MITSUI KINZOKU
CORPORATE R & D CENTER

備考:



*撮影フィルム控

Ti	Fe
Mn	O



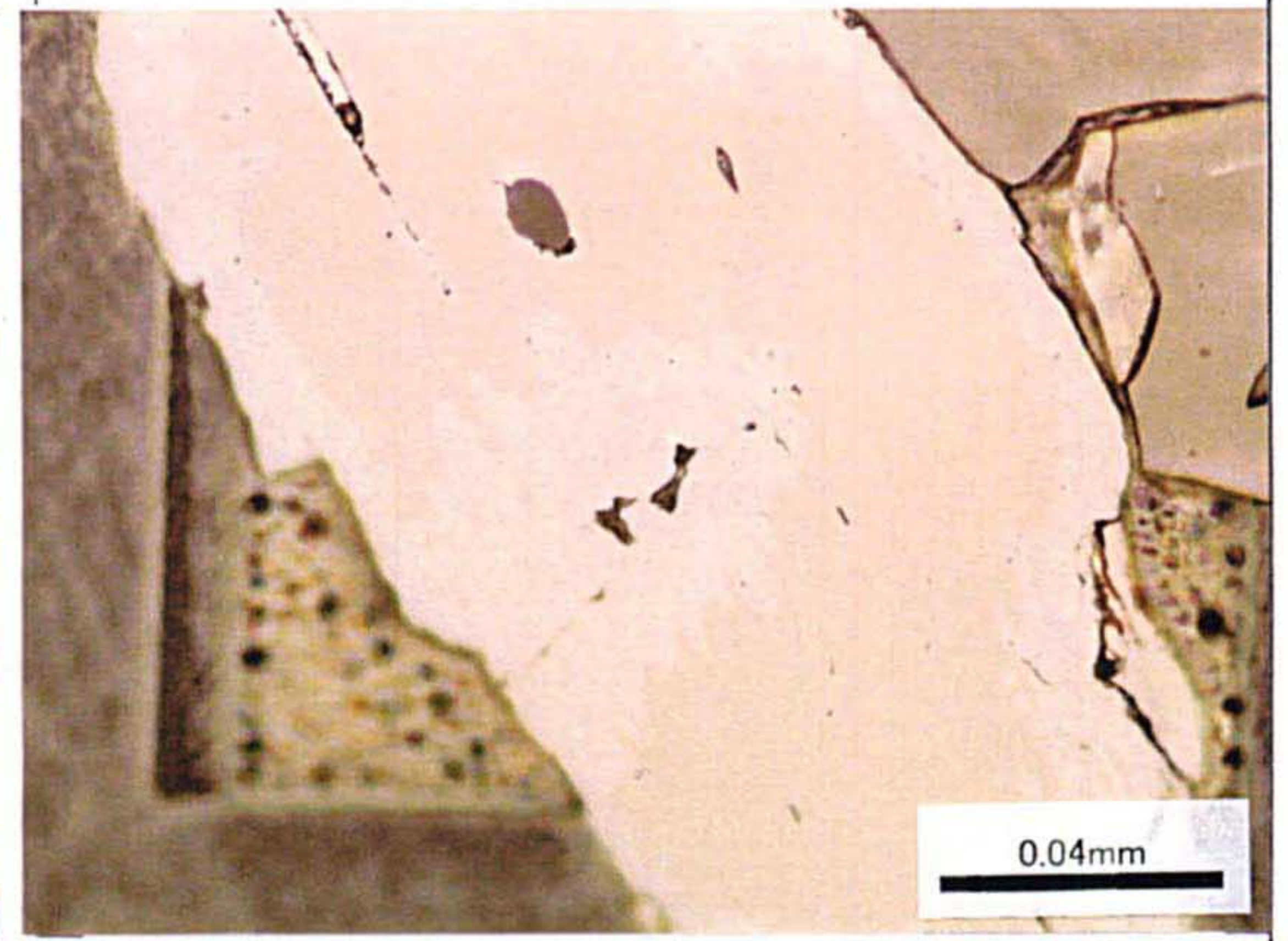
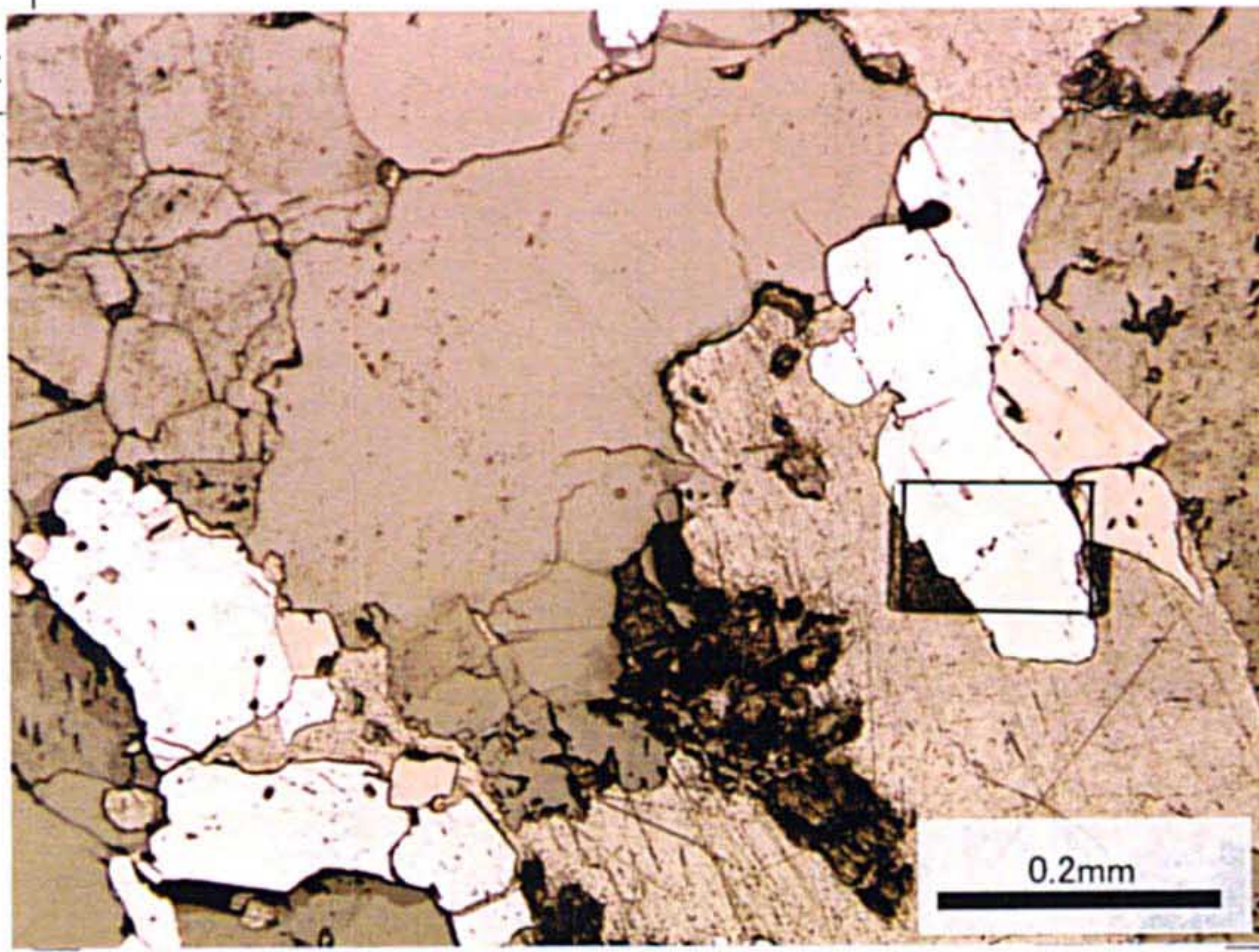
EPL-1

EPMA試験結果

Ilmenite/Pseudorutile
from I 232

受付番号	2
試料名	
加速電圧	15 KV
電子線電流	0.05 μ A
倍率	$\times 1000$
測定年月日	

備考:

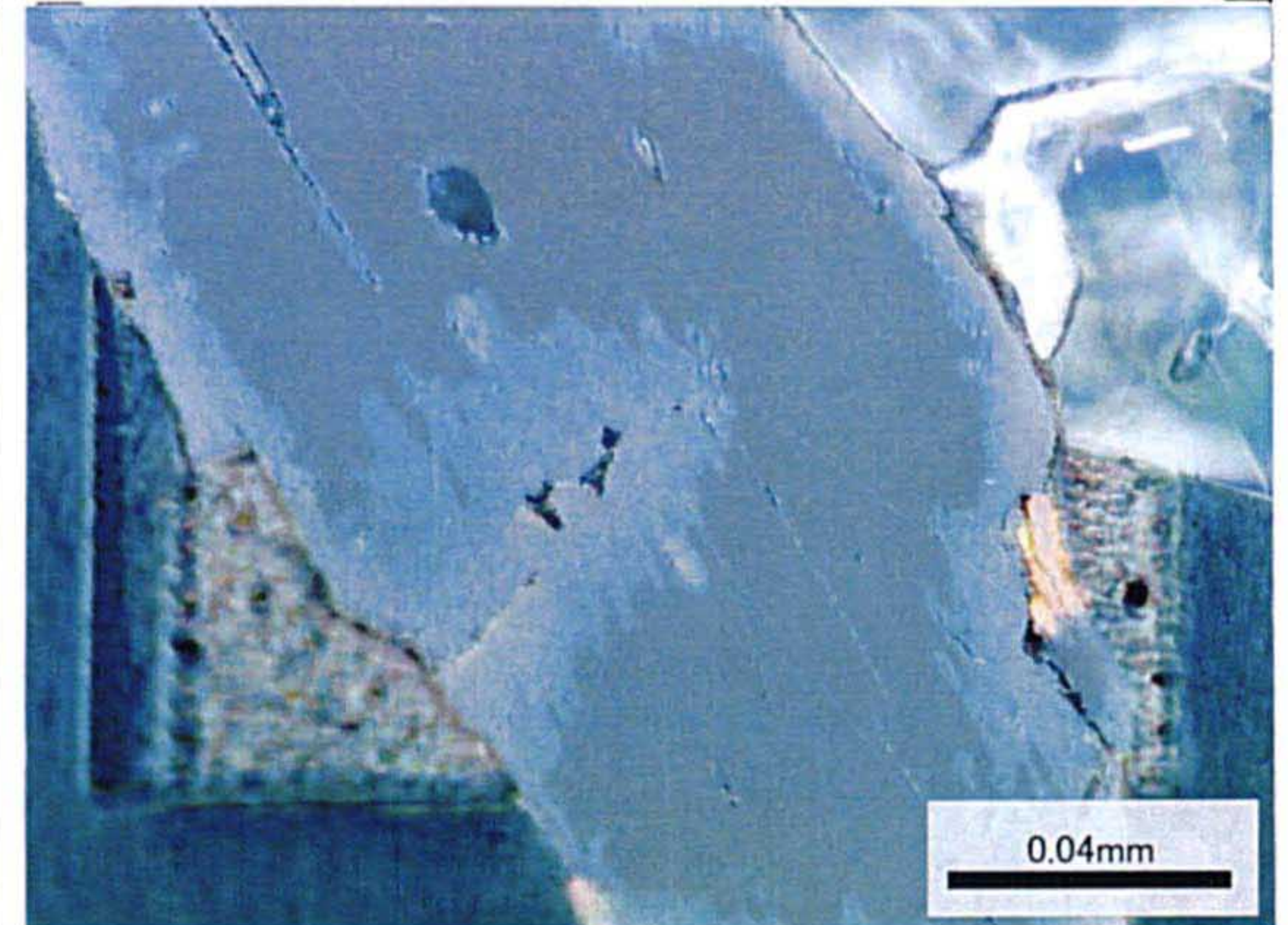
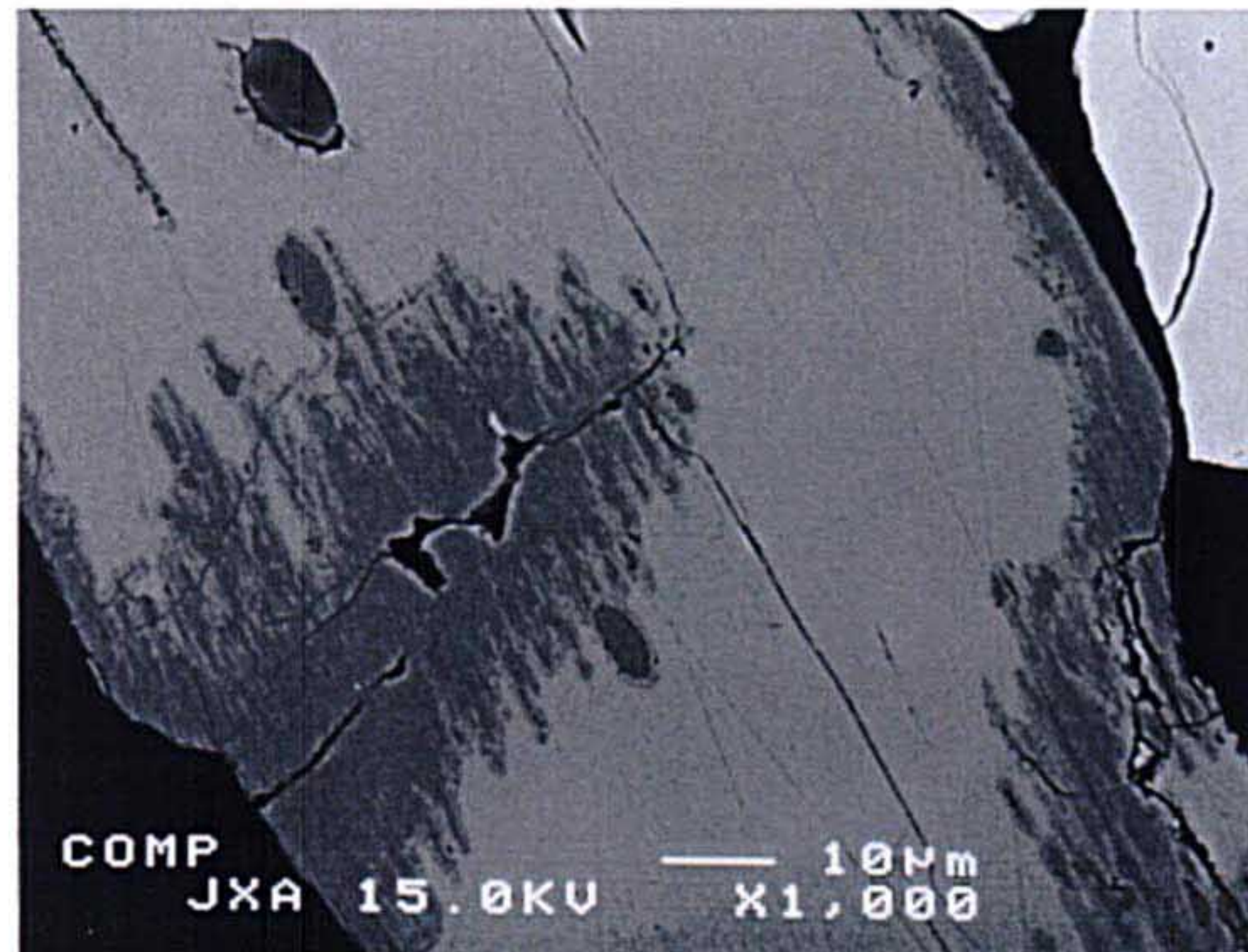


*撮影フィルム控

Polished section
Reflected light

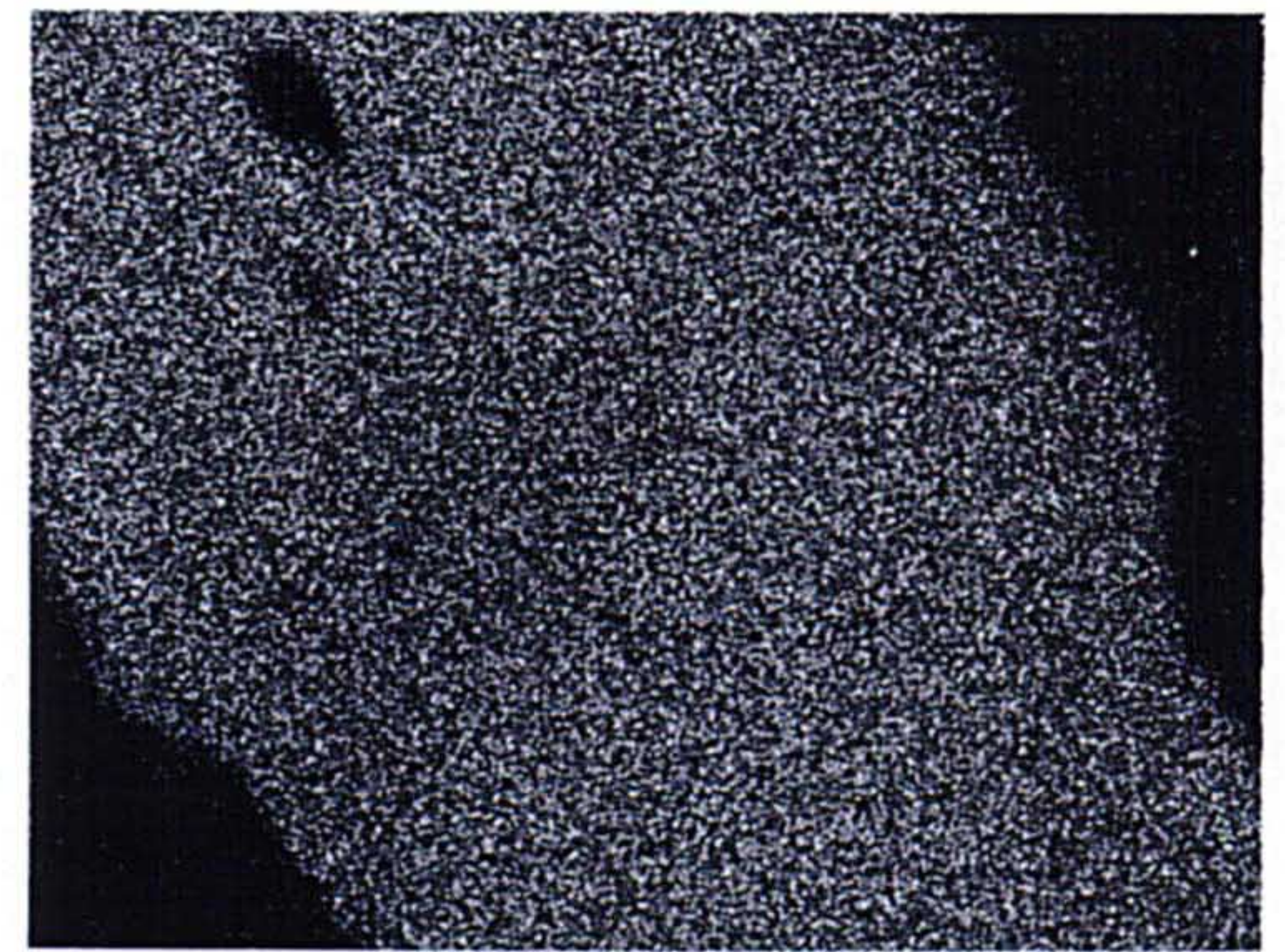
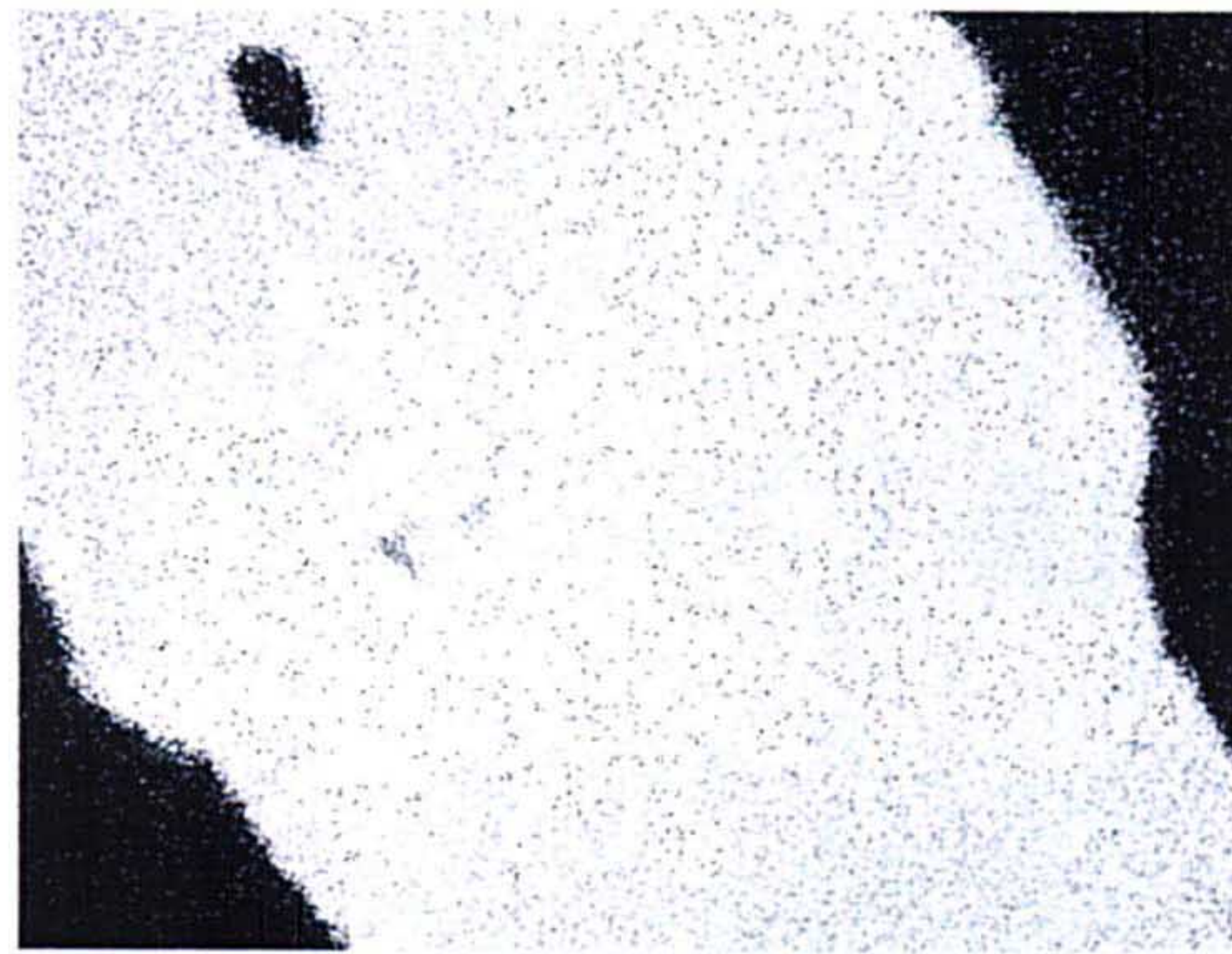
組成像

Polished section
Reflected light
crossed nicols



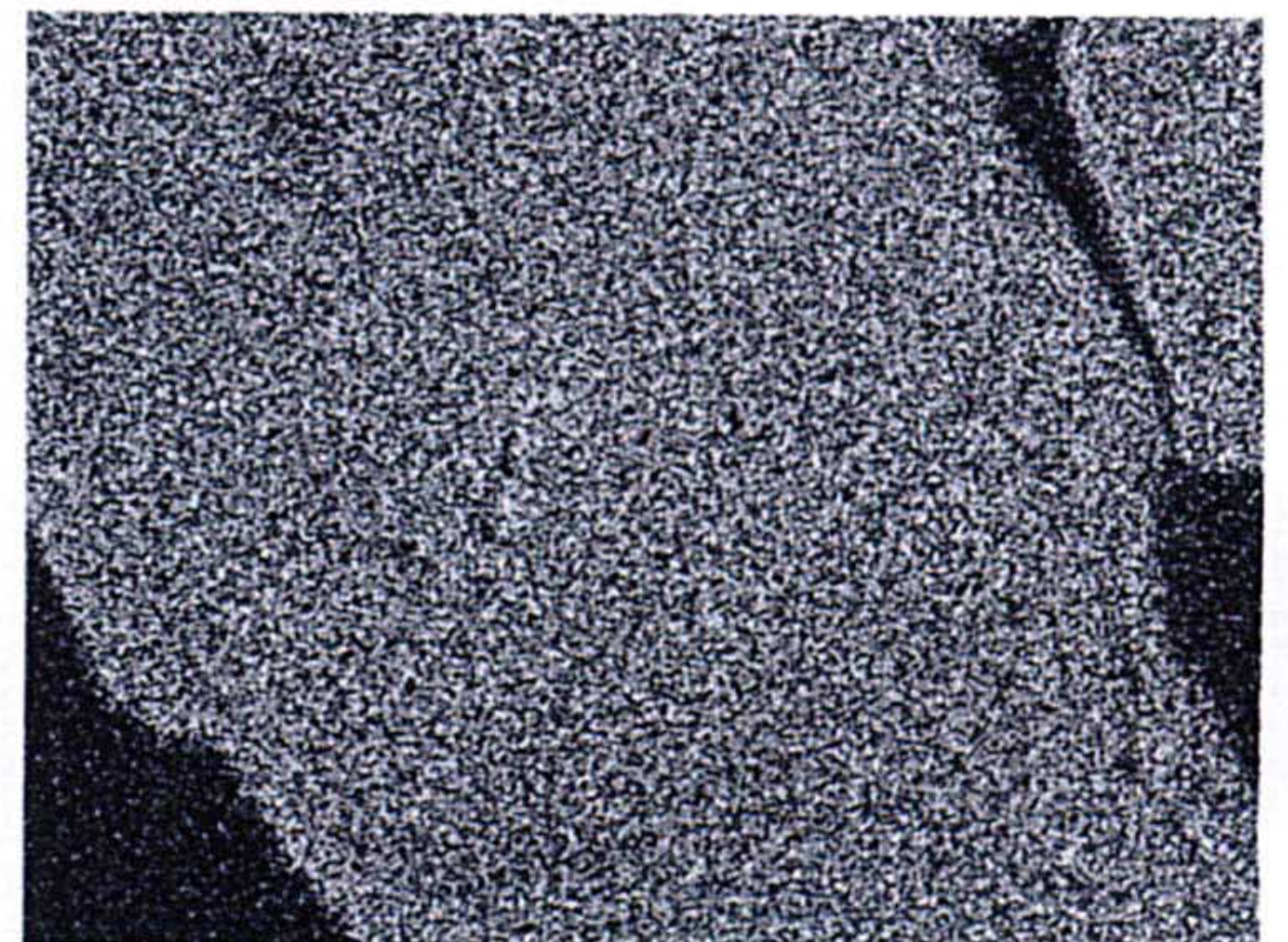
MITSUI KINZOKU
CORPORATE R & D CENTER

備考:



*撮影フィルム控

Ti	Fe
Mn	O

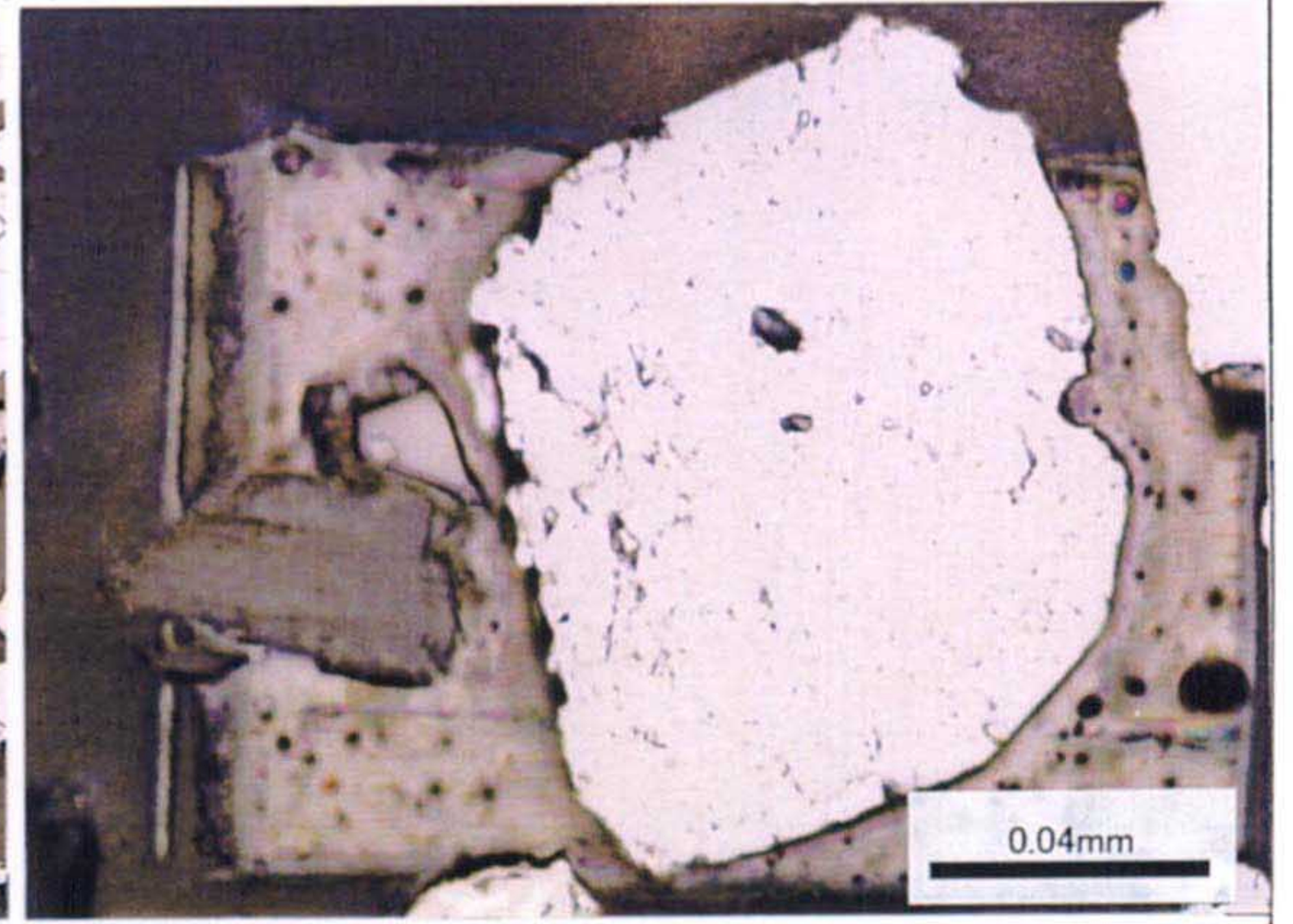
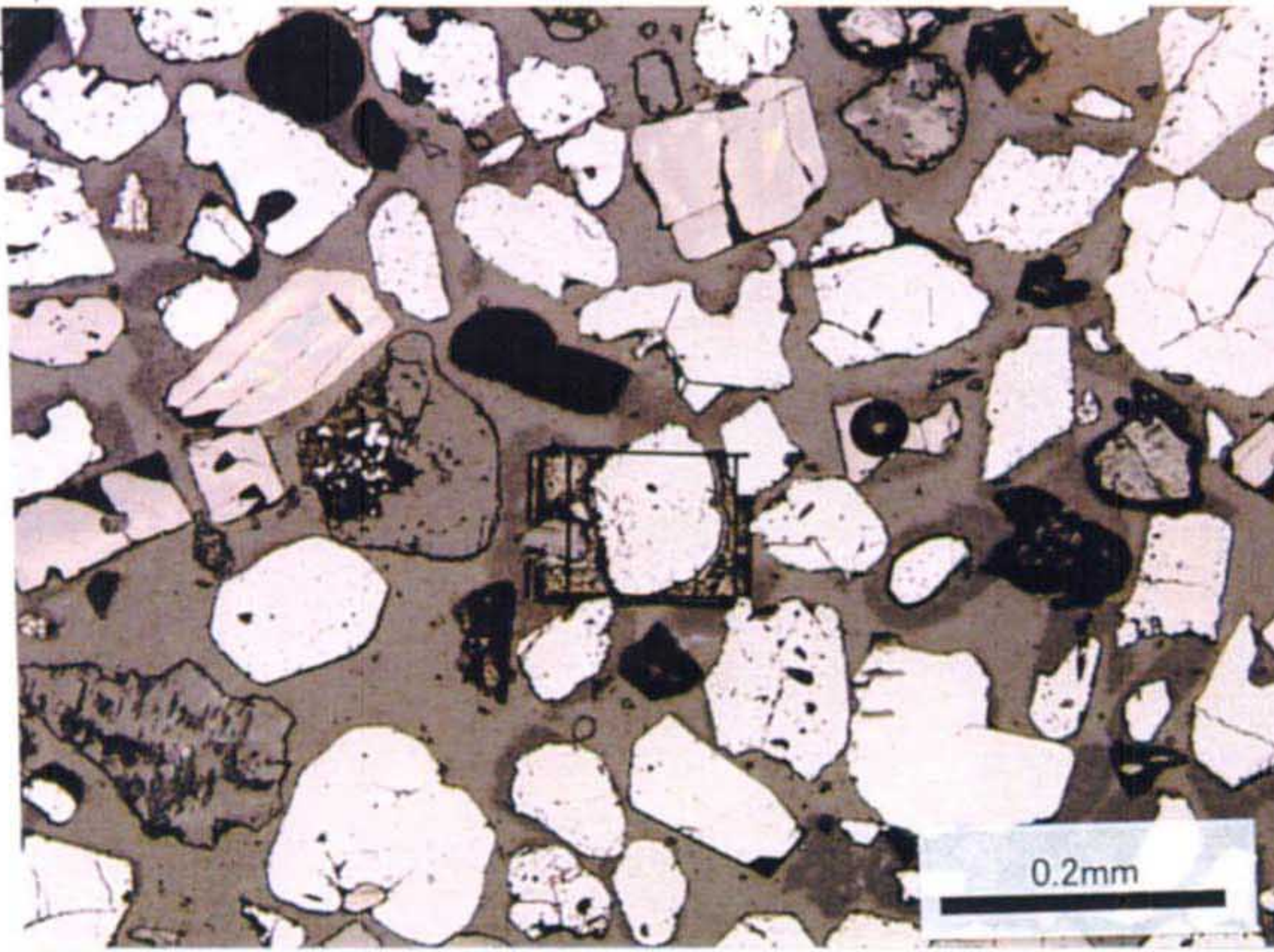


EPMA試験結果

Pseudorutile
from karaotkel Pit2

受付番号	3
試料名	
加速電圧	15 KV
電子線電流	0.05 μ A
倍率	$\times 1000$
測定年月日	

備考:

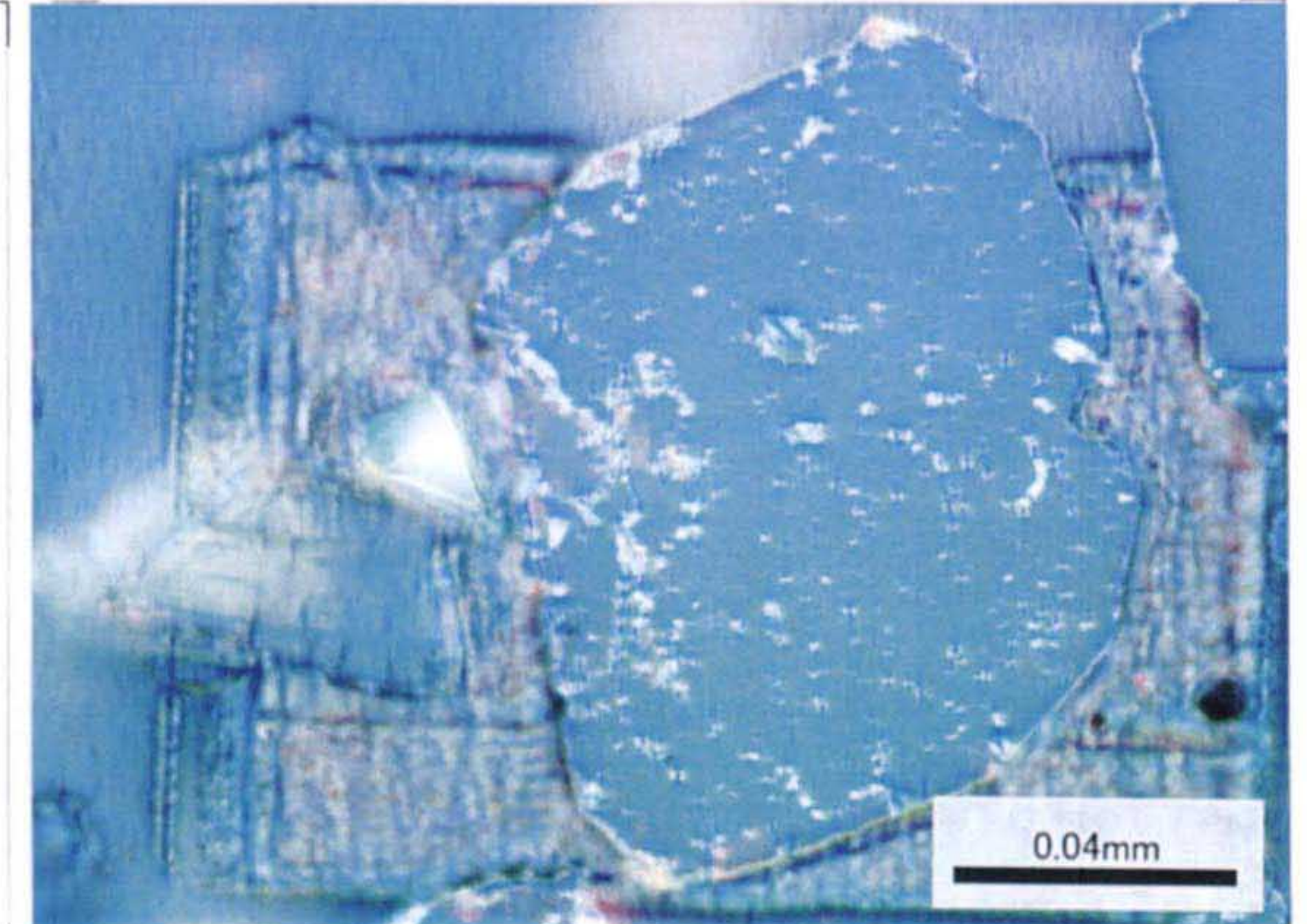
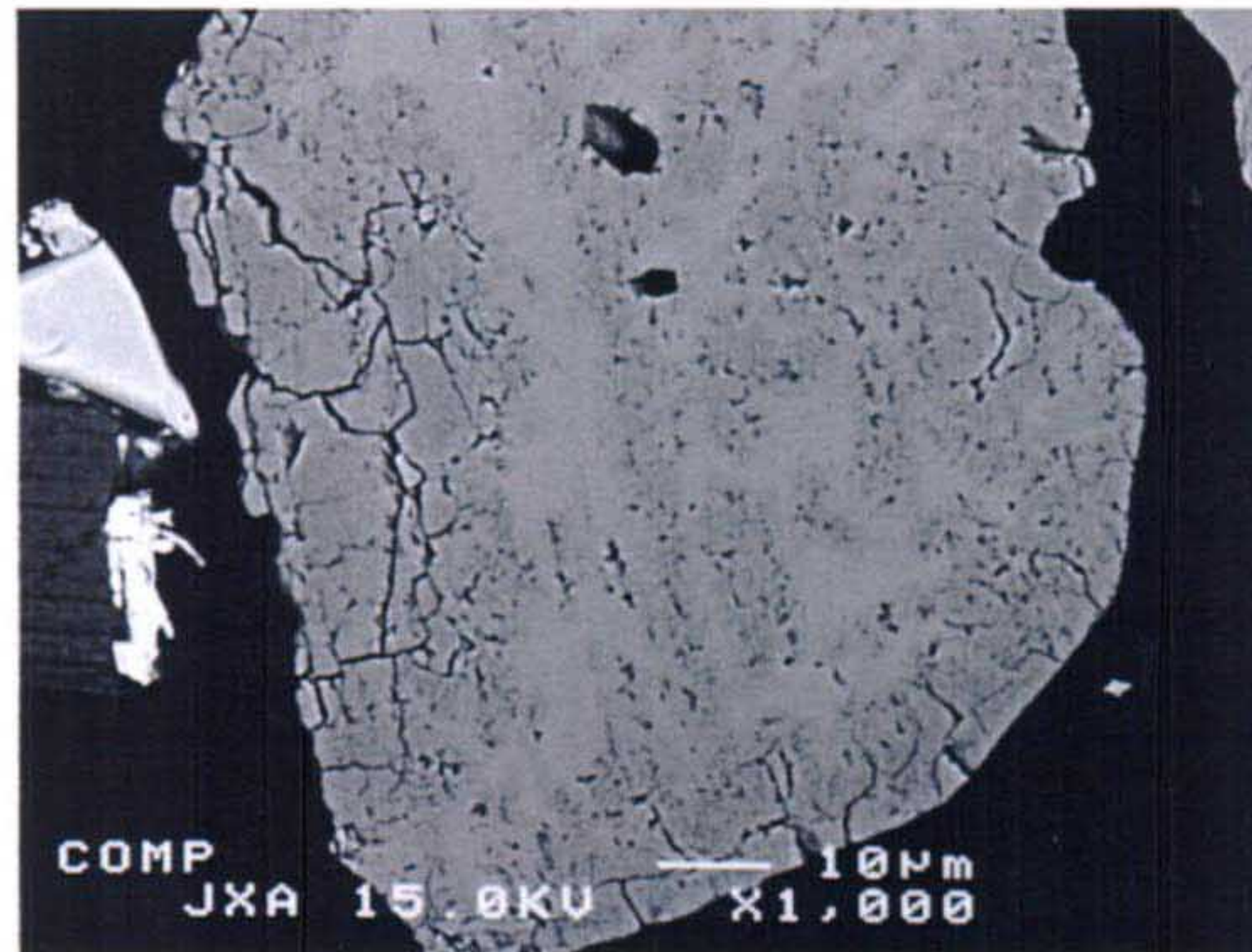


*撮影フィルム控

Polished section Reflected light	Polished section Reflected light
-------------------------------------	-------------------------------------

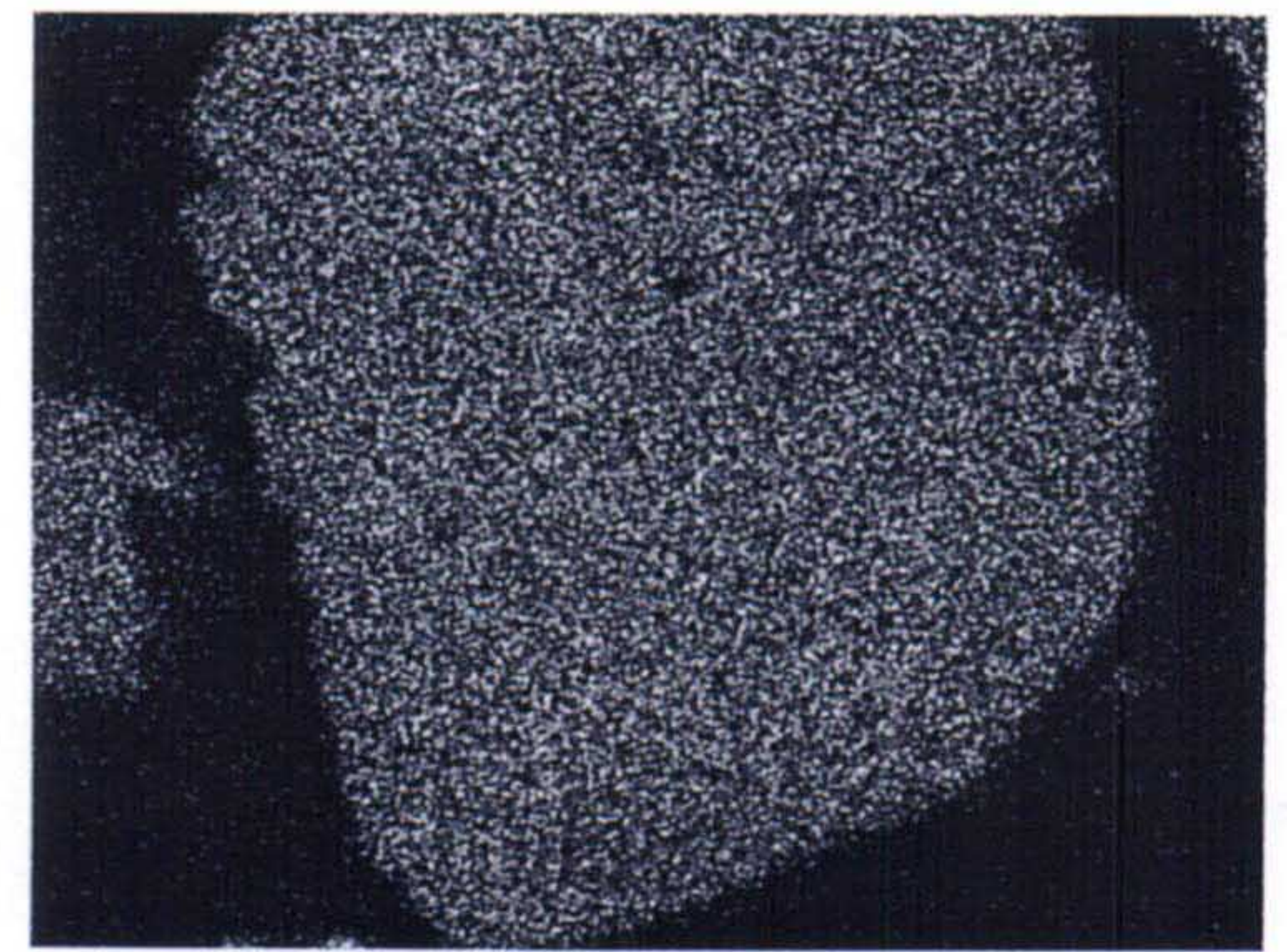
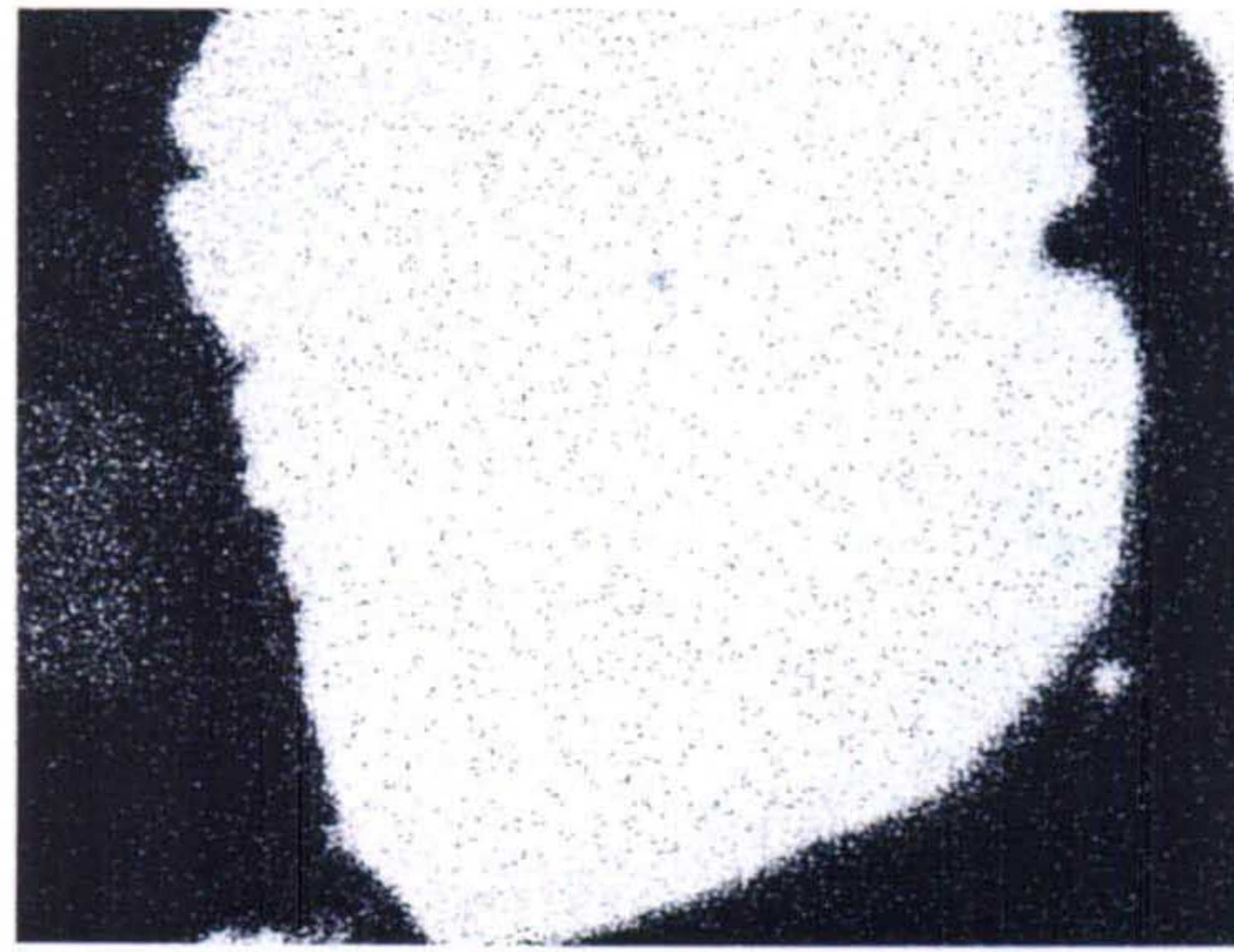
組成像

Polished section Reflected light crossed nicols



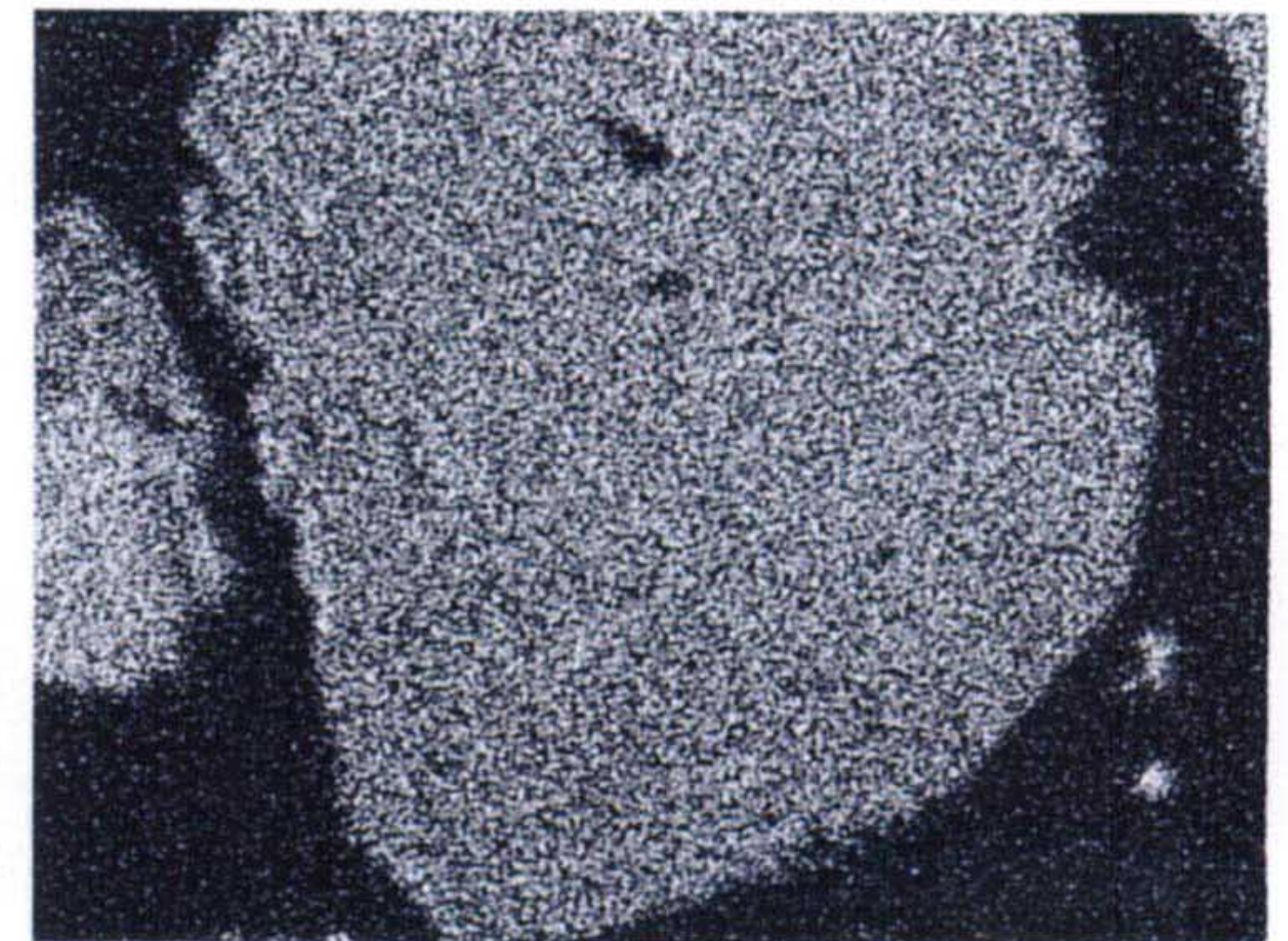
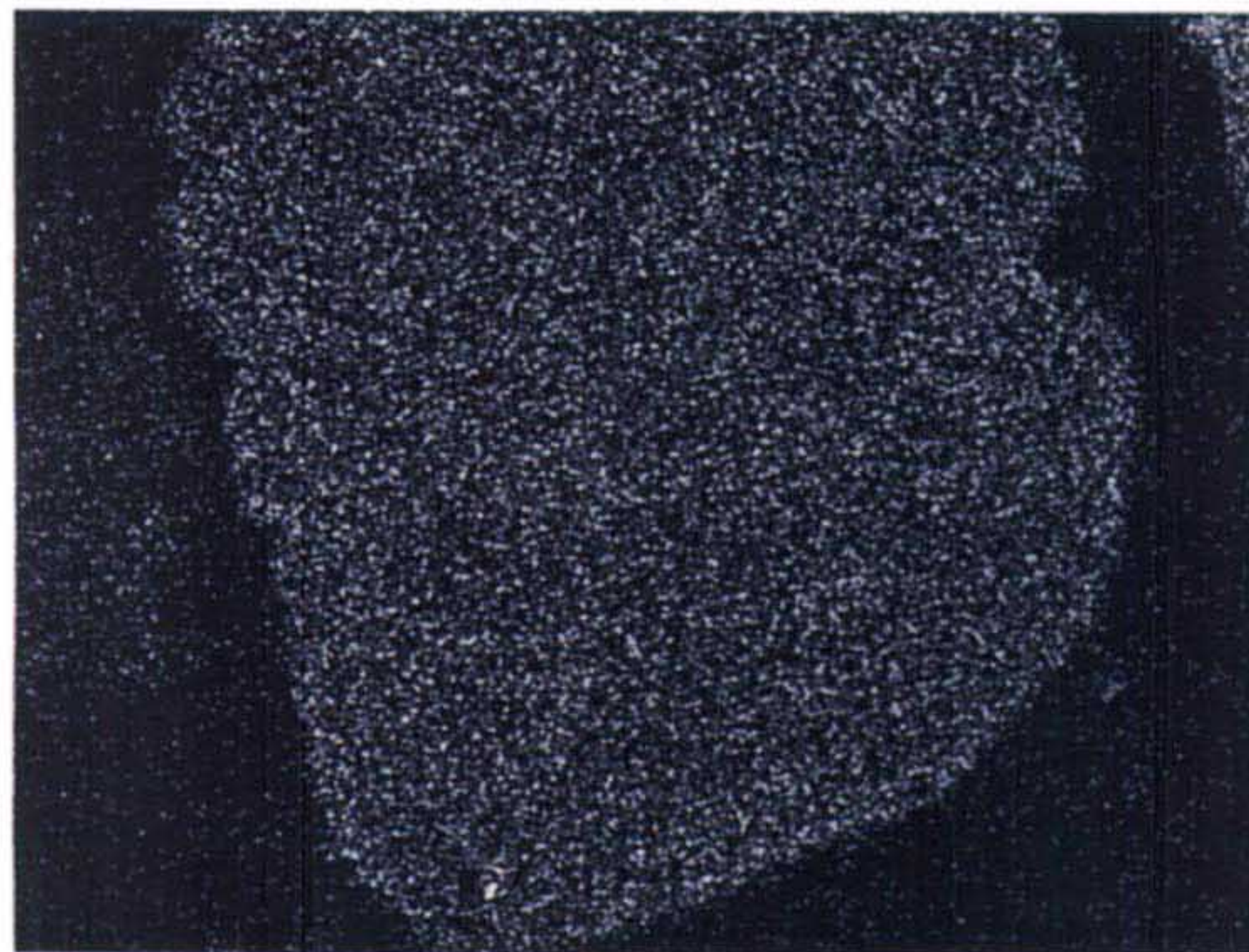
MITSUI KINZOKU
CORPORATE R & D CENTER

備考:



*撮影フィルム控

Ti	Fe
Mn	O



EPL-3