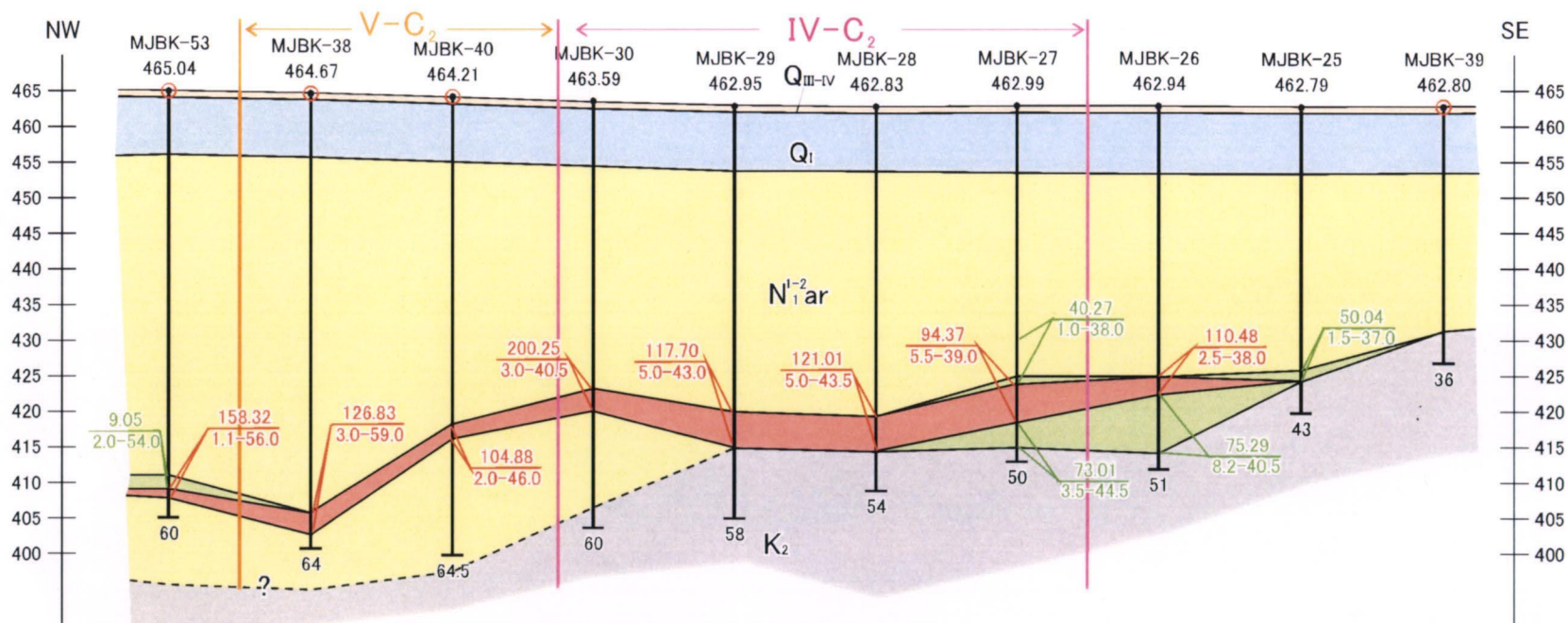


Fig.II-3-1 Location Map of the Drillholes in the Bektimir No.1 South, No.3 South and East Bektimir

Scale: Horizontal 1:10000  
Vertical 1:1000



LEGEND

- Q<sub>III-IV</sub> Soil and loam with rock fragment
- Q<sub>I</sub> Sand-pebble-gravel deposit
- N<sub>I-2</sub> Clay, sandy clay
- K<sub>2</sub> Crust of weathering

- Ore body
- Uneconomical ore (ore zone)

4.02 Average content of ilmenite(kg/m<sup>3</sup>)  
1.0-24.0 Thickness of ore(m)-Thickness of overburden(m)

- Drilled holes
  - a) in 2001 ; b) in 2002
  - Number of hole
  - Depth of hole(m)
- MJBK-25 462.79 a) 43  
MJBK-39 462.80 b) 36

← V-C<sub>2</sub> → Expected resources of C<sub>2</sub> category and number of blocks

Fig.II-3-2 Geological Cross Section along Line-26

Scale: Horizontal 1:10000  
Vertical 1:1000

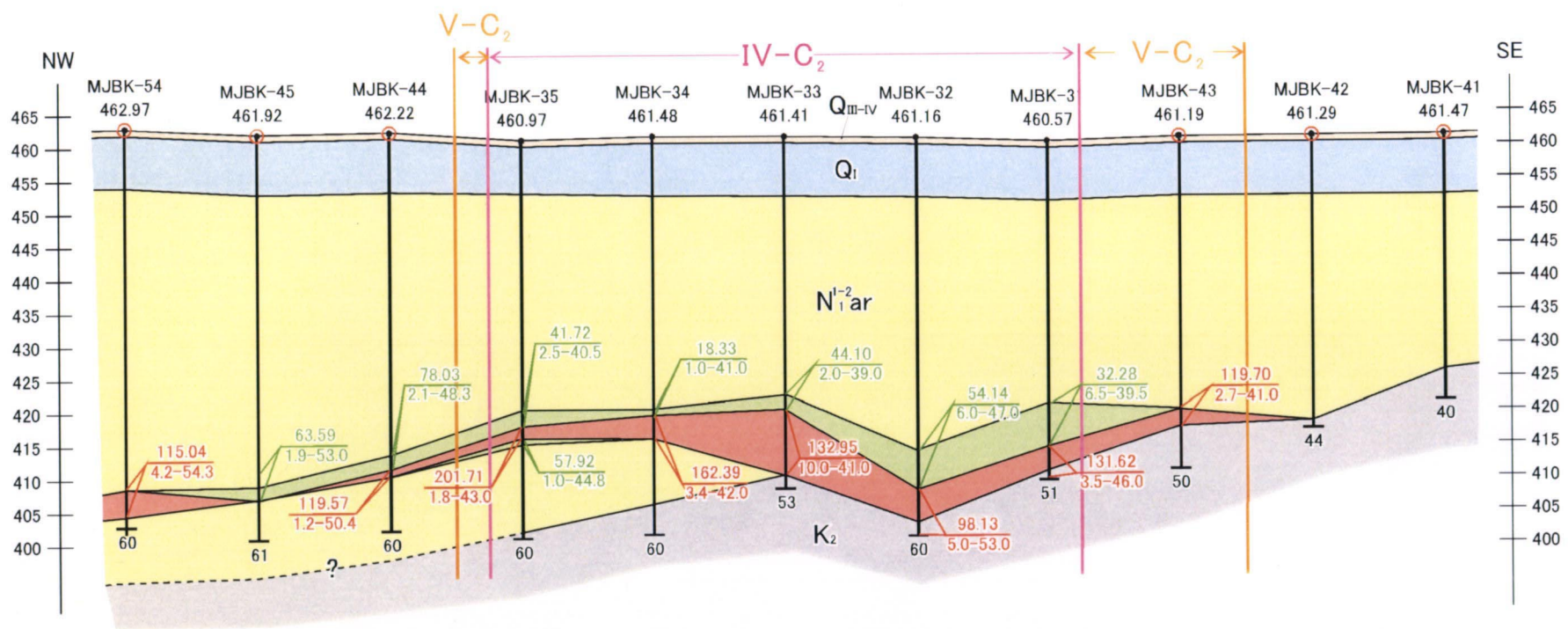


Fig.II-3-3 Geological Cross Section along Line-22

Scale: Horizontal 1:10000  
Vertical 1:1000

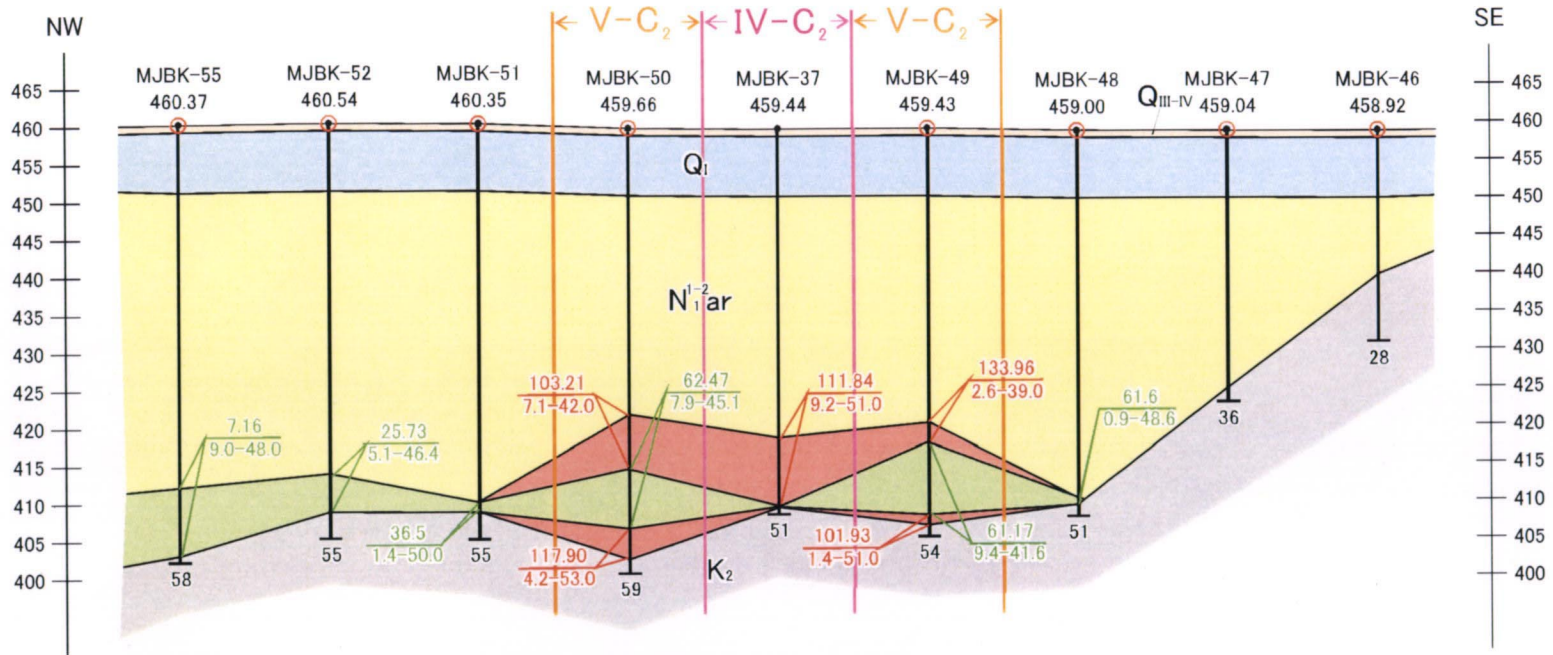


Fig.II-3-4 Geological Cross Section along Line-18