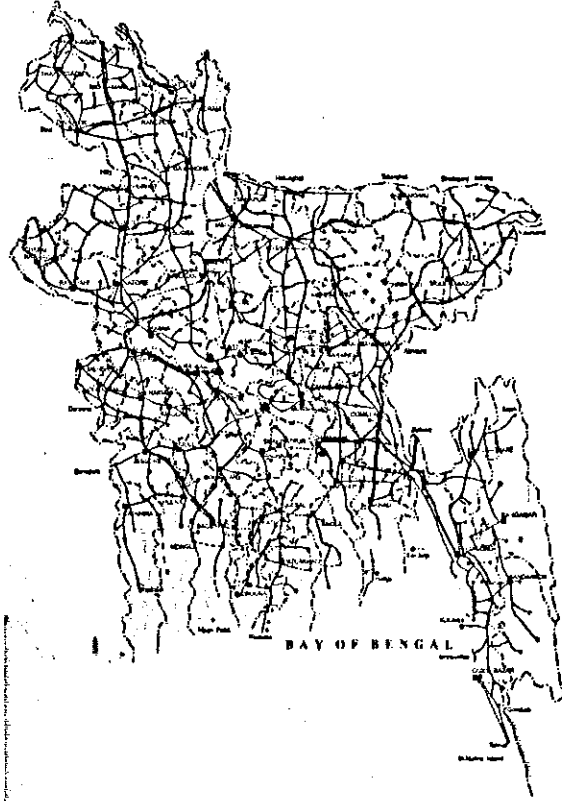
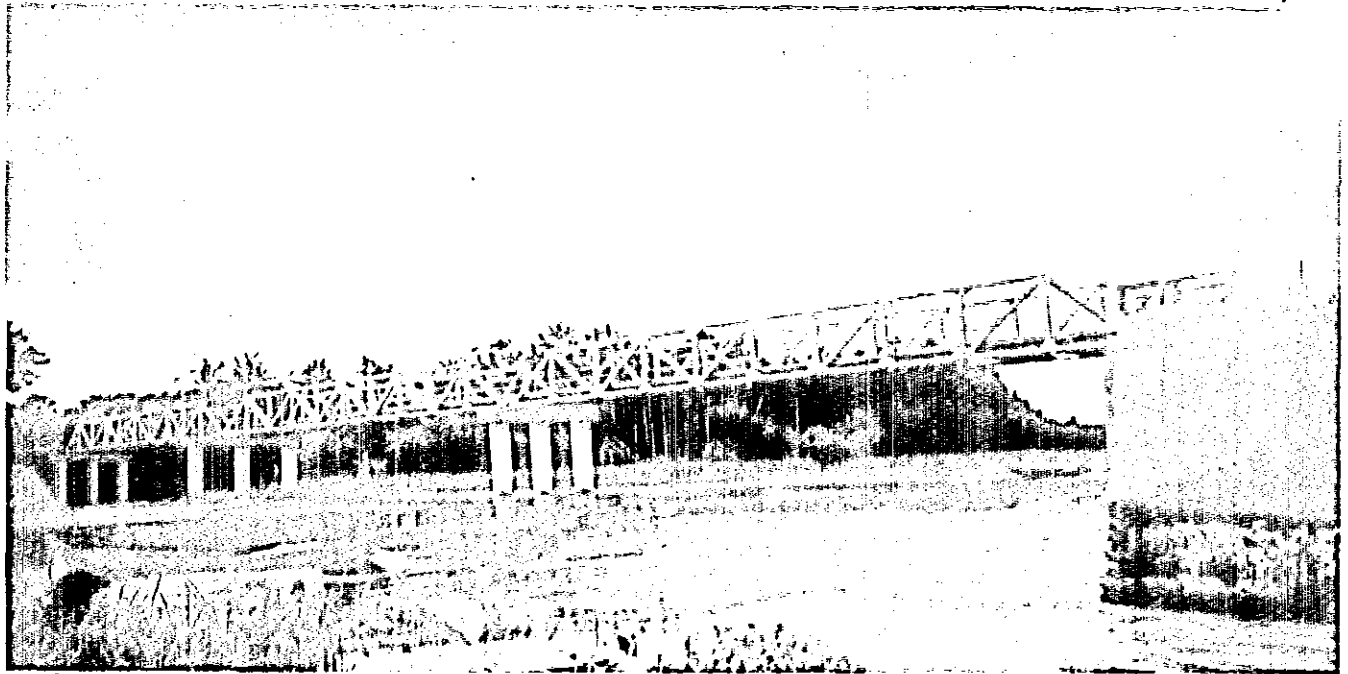


People's Republic of Bangladesh

Master Plan Study for Portable Steel Bridge Construction on Feeder and Rural Roads in Bangladesh

Final Report

Volume II of VI
Main Report



Prepared on behalf of

**Japan International Cooperation Agency
and
Local Government Engineering Department**

JICA LIBRARY



J1171634(7)

Prepared By:
BCL Bangladesh Consultants Ltd.

October 2002

SDA
JR
02-142

Bangladesh Consultants Ltd

**MASTER PLAN STUDY FOR PORTABLE STEEL BRIDGE CONSTRUCTION
ON FEEDER AND RURAL ROADS IN BANGLADESH**

06 October, 2002

Mr Takashi Sakamoto
Resident Representative
Japan International Cooperation Agency
Bangladesh Office

Subject: Final Report


Dear Sir,

We are pleased to submit herewith the Final Report of the Master Plan Study for Portable Steel Bridge Construction on Feeder and Rural Roads in Bangladesh. The report is presented in six volumes as stated below:

Volume I	Executive Summary
Volume II	Main Report, Appendix A
Volume III	Appendix B
Volume IV	Appendix C, D & E
Volume V	Location Maps of Study Bridges
Volume VI	Bridge Site Photographs

We express our heartiest thanks and gratitude to the officials of JICA and LGED for their cooperation and advice extended to us for fulfillment of our responsibilities.

Yours truly


Md Nasir Uddin
Project Manager
Bangladesh Consultants Ltd

Enclosed: a) 50 copies of volume I, II, III & IV
b) 3 copies of volume V & VI



1171634(7)

TABLE OF CONTENTS

VOLUME I EXECUTIVE SUMMARY

VOLUME II MAIN REPORT

ROAD MAP

LOCATION MAP OF STUDY BRIDGES

ABBREVIATIONS

1.0	INTRODUCTION.....	1-1
1.1	Background of the Study	1-1
1.2	Objectives of the Study.....	1-2
1.3	Study Area and Study Bridges.....	1-2
1.4	Scope of the Study.....	1-2
1.5	Composition of the Final Report.....	1-3
2.0	DIVISION OF THE COUNTRY INTO ZONES	2-1
2.1	Criteria for Zoning.....	2-1
2.2	Zoning	2-1
3.0	SOCIO-ECONOMIC CHARACTERISTICS OF DISTRICTS/ZONES	3-1
3.1	List of Socio-economic Data and Indicators	3-1
3.2	Socio-economic Data.....	3-3
3.3	Socio-economic Indicators	3-7
3.4	Assessment of Socio-economic Condition	3-10
3.4.1	Demographic Characteristics.....	3-10
3.4.2	Economic Characteristics	3-10
3.4.3	Social Characteristics	3-12
3.4.4	Road Development Condition	3-15
3.4.5	Summary	3-21
3.5	Assessment of Impact of Bridge Construction on Rural Development.....	3-23
4.0	MAJOR ODA PROJECTS	4-1
4.1	Major ODA Projects for Rural Development.....	4-1
4.1.1	Major ODA Projects.....	4-1
4.1.2	Coverage of Major ODA Projects	4-11
4.2	Portable Steel Bridge Construction Projects undertaken by LGED	4-15
5.0	FUND AVAILABILITY AND IMPLEMENTATION SYSTEM FOR PORTABLE STEEL BRIDGE CONSTRUCTION	5-1
5.1	LGED Budget in Last Five Years.....	5-1
5.2	Estimation of Possible Investment Amount for Portable Steel Bridge Construction.....	5-2
5.3	Implementation System for Portable Steel Bridge Construction.....	5-3
5.3.1	Planning.....	5-3
5.3.2	Project Approval.....	5-3
5.3.3	Fund Preparation	5-4
5.3.4	Design.....	5-5
5.3.5	Selection of Contractor.....	5-5
5.3.6	Construction and Supervision.....	5-6
5.3.7	Maintenance	5-6
5.3.8	Role of Donor Agency.....	5-6
5.4	Identification of Problems in the System and Recommendations for Improvement.....	5-7

6.0	BASIC DATA OF STUDY BRIDGES	6-1
6.1	General.....	6-1
6.2	Basic Data of Study Bridges.....	6-4
7.0.	MASTER PLAN FOR PORTABLE STEEL BRIDGE CONSTRUCTION	7-1
7.1	Procedure for Formulation of Master Plan	7-1
7.2	Prioritization of Zones	7-2
7.2.1	Criteria for Prioritization of Zones	7-2
7.2.2	Prioritization of Zones	7-6
7.3	Screening and Prioritization of Bridges.....	7-11
7.3.1	Criteria for Screening of Bridges	7-11
7.3.2	Criteria for Prioritization of Bridges	7-11
7.3.3	Screening of Bridges	7-16
7.3.4	Prioritization of Bridges	7-17
7.4	Cost Estimate.....	7-22
7.4.1	Span Arrangement.....	7-22
7.4.2	Unit Cost.....	7-24
7.4.3	Cost Estimate.....	7-31
7.5	Implementation Schedule	7-31
8.0	BRIDGES IN PRIORITY ZONES.....	8-1
8.1	Bridge Site Survey.....	8-1
8.1.1	Survey Method	8-1
8.1.2	Results of Survey.....	8-2
8.2	Implementation Plan.....	8-4
8.2.1	List of Project Bridges.....	8-4
8.2.2	Number of Bridges, Bridge Length and Cost.....	8-16
8.2.3	Land Acquisition and Relocation Requirements.....	8-17
8.2.4	Implementation Schedule	8-17
8.3	Assessment of Project Effects	8-19
8.3.1	General	8-19
8.3.2	Beneficiaries.....	8-19
8.3.3	Direct Effects of the Project	8-22
8.3.4	Indirect Effects of the Project.....	8-28
8.3.5	Preliminary Economic Evaluation.....	8-31

APPENDIX A TERMS OF REFERENCE

VOLUME III

APPENDIX B BASIC DATA OF STUDY BRIDGES

VOLUME IV

APPENDIX C PRIORITIZATION OF STUDY BRIDGES

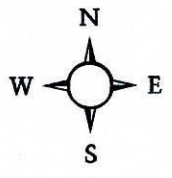
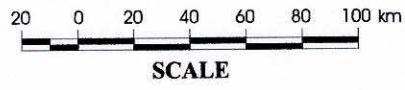
APPENDIX D COST ESTIMATE OF STUDY BRIDGES

APPENDIX E BRIDGE SITE SURVEY DATA

VOLUME V LOCATION MAPS OF STUDY BRIDGES

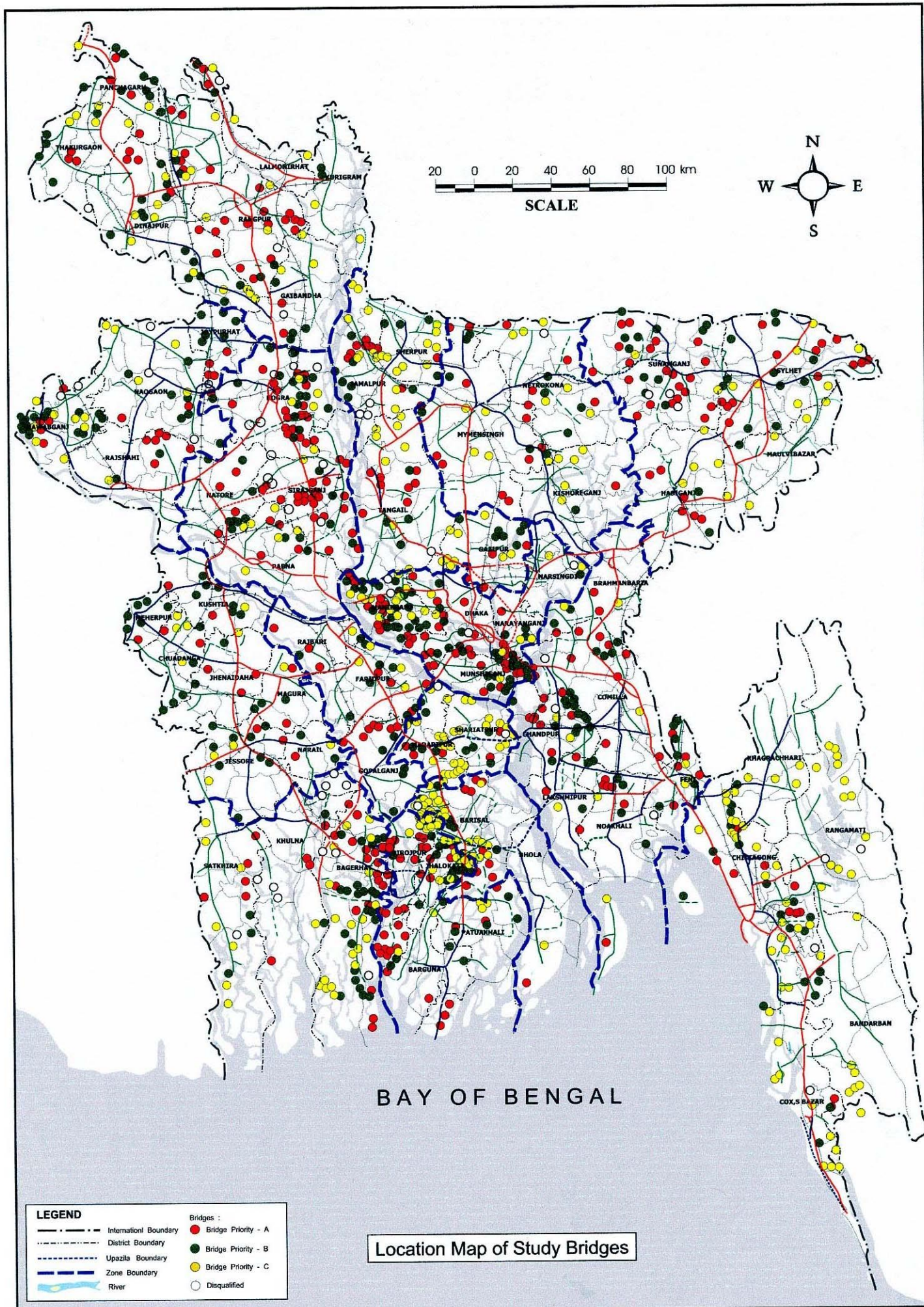
VOLUME VI BRIDGE SITE PHOTOGRAPHS

MASTER PLAN STUDY FOR PORTABLE STEEL BRIDGE CONSTRUCTION ON FEEDER AND RURAL ROADS IN BANGLADESH



LEGEND	
	National Highway
	Regional Highway
	Feeder Road A&B
	International Boundary
	District Boundary
	River
	Railway Line
	District/Thana H.Q.
	R H D Ferries
	B.I.W.T.C. Ferries

ROAD MAP



ABBREVIATIONS

ACE	Additional Chief Engineer
ADB	Asian Development Bank
ADF	Asian Development Fund of ADB
ADP	Annual Development Programme
ADT	Average Daily Traffic
BBS	Bangladesh Bureau of Statistics
CD	Custom Duty
CE	Chief Engineer
DANIDA	Danish International Development Agency
DFID	Department for International Development (of UK)
DPEC	Departmental Project Evaluation Committee
ECNEC	Executive Committee of National Economic Council
ERD	Economic Relations Division (of the Ministry of Finance)
GDP	Gross Domestic Products
GRP	Gross Regional Products
GoB	Government of Bangladesh
IDA	International Development Association
IFAD	International Fund for Agriculture Development
JBIC	Japan Bank for International Cooperation
JICA	Japan International Cooperation Agency
KfW	Kreditanstalt für Wiederaufbau (German Aiding Agency)
LDF	Local Development Fund
LGD	Local Government Division (of the M/O LGRD & C)
LGED	Local Government Engineering Department
LCS	Labour Contracting Society
M/O LGRD & C	Ministry of Local Government, Rural Development & Cooperatives
MoU	Memorandum of Understanding
MP	Member of the Parliament
NGO	Non-Government Organization
ODA	Official Development Assistance
OPEC	Organization of Petroleum Exporting Countries
ORET	Export Related Development Programme of the Netherlands
PBS	Palli Byddut Samity (Rural Electrification Society)
PCP	Project Concept Paper
PCU	Project Coordination Unit
PD	Project Director
PKSF	Palli Karmo Sahayak Foundation
PP	Project Proforma
PSB	Portable Steel Bridge
RHD	Roads & Highways Department
SDC	Swiss Development Cooperation
SIDA	Swedish International Development Agency
TA	Technical Assistance
ToR	Terms of Reference
UP	Union Parishad (the lowest level of Local Government unit having a elected body and headed by a elected Chairman)
UPZ	Upazila
VAT	Value Added Tax
VOC	Vehicle Operating Cost
XEN	Executive Engineer