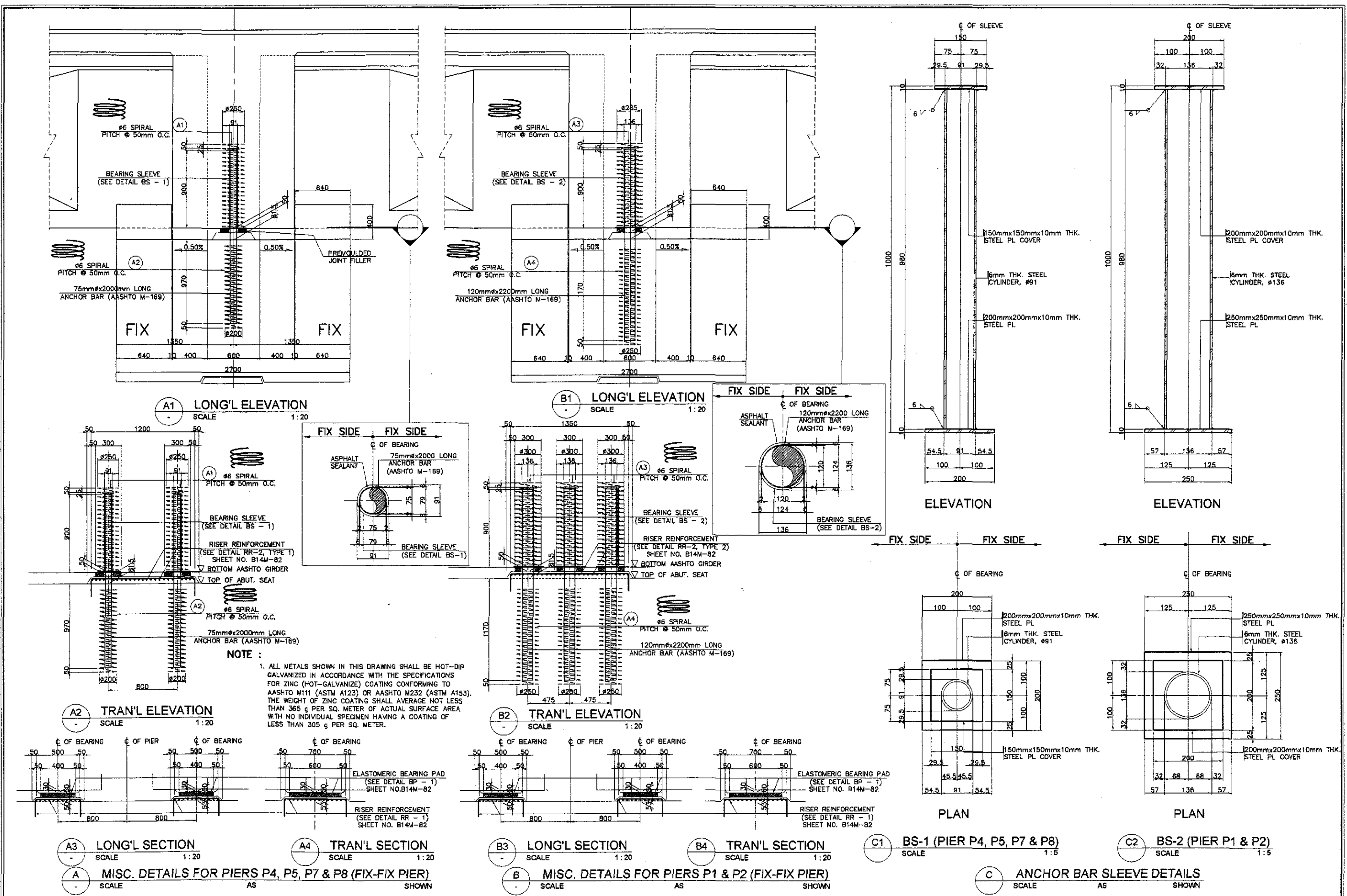
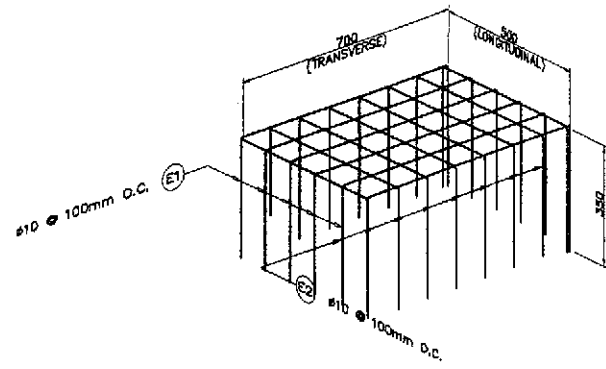


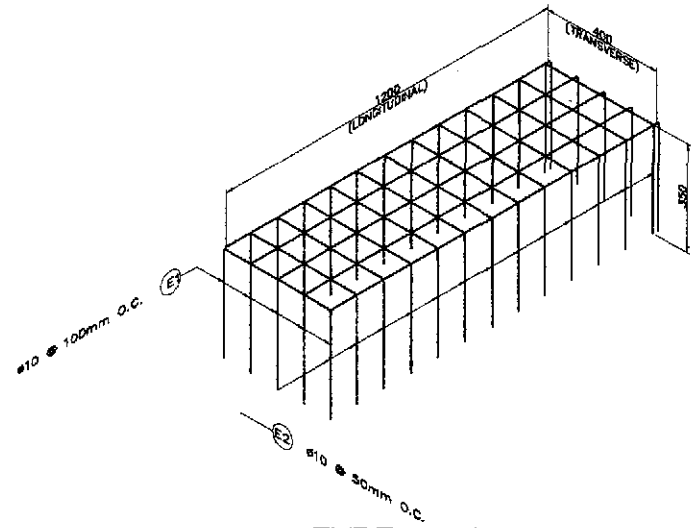
MISCELLANEOUS DRAWINGS



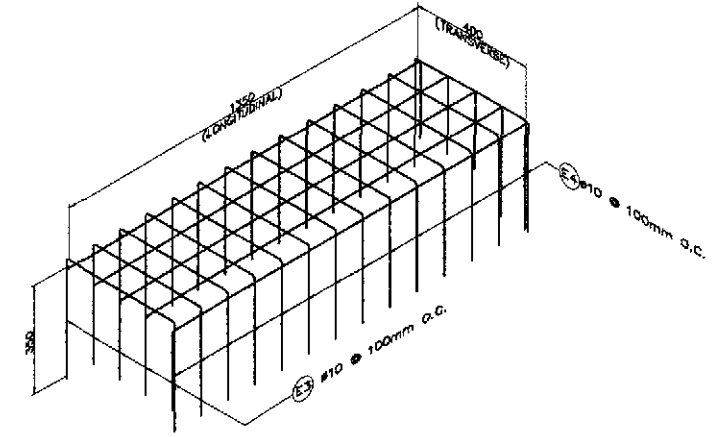
	DESIGNED: <i>[Signature]</i> DATE: 10/17/07 CHECKED: <i>[Signature]</i> DATE: 10/19/07 SUBMITTED: <i>[Signature]</i> DATE: 10/21/07	SIGNATURE: <i>[Signature]</i> F. P. DE RESUS J. C. SANTOS TEAM LEADER	REPUBLIC OF THE PHILIPPINES DEPARTMENT OF PUBLIC WORKS AND HIGHWAYS BUREAU OF DESIGN OFFICE OF THE SECRETARY	PROJECT AND LOCATION: THE DETAILED DESIGN STUDY ON UPGRADING INTER-URBAN HIGHWAY SYSTEM ALONG THE PAN-PHILIPPINE HIGHWAY (Plaridel, Cabanatuan and San Jose Bypasses) CABANATUAN BYPASS - CONTRACT PACKAGE IV	SCALE: AS SHOWN FULL SIZE A1	SHEET CONTENTS: BRIDGE NO.14 TALAVERA RIVER BRIDGE ANCHOR BAR AND BEARING DETAILS FOR FIX PIERS (ULTIMATE STAGE)	SHEET NO.: B14M-81
	Submitted By: DANILLO C. TRAJANO, Project Director Reviewed By: ADRIANO M. DORCY, Chief, Bridges Division Recommended By: GILBERTO S. REYES, Director IV (OIC) Recommended By: MANUEL M. BONCAN, Undersecretary Approved By: SIMEON A. DATUMANONG, Secretary						
	JICA JAPAN INTERNATIONAL COOPERATION AGENCY KATAHIRA & ENGINEERS INTERNATIONAL YEO YACHYO ENGINEERING CO., LTD.						



A RR-1 (BEARING PAD)
N T S



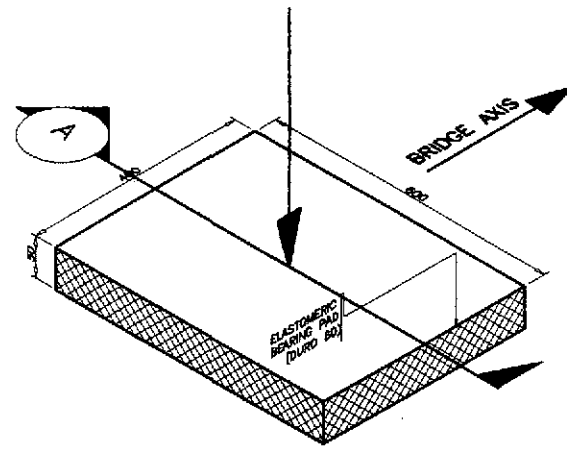
TYPE - 1



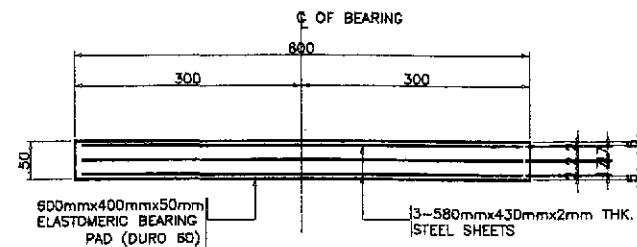
TYPE - 2

B RR-2 (DOWEL)
PIER (FIX-FIX)
N T S

3 RISER REINFORCEMENT DETAILS
N T S

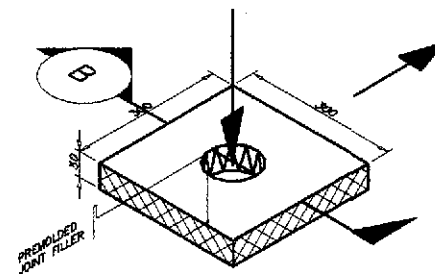


ISOMETRIC VIEW

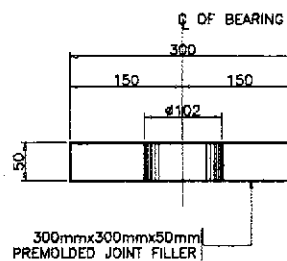


SECTION A

D BP-1 @ BEARING
SCALE: 1:5



ISOMETRIC VIEW

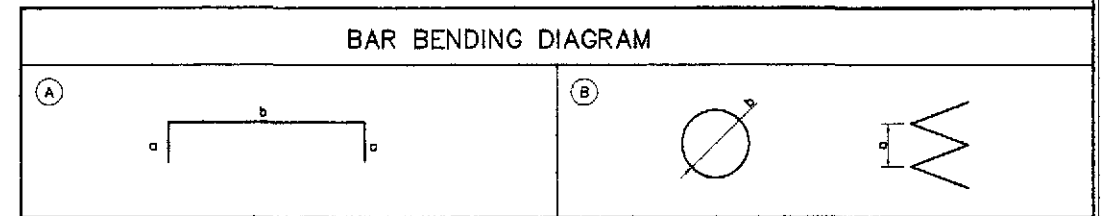


SECTION A

E BP-2 @ ANCHOR BAR
SCALE: 1:5

1 ELASTOMERIC BEARING PAD DETAILS
SCALE AS SHOWN

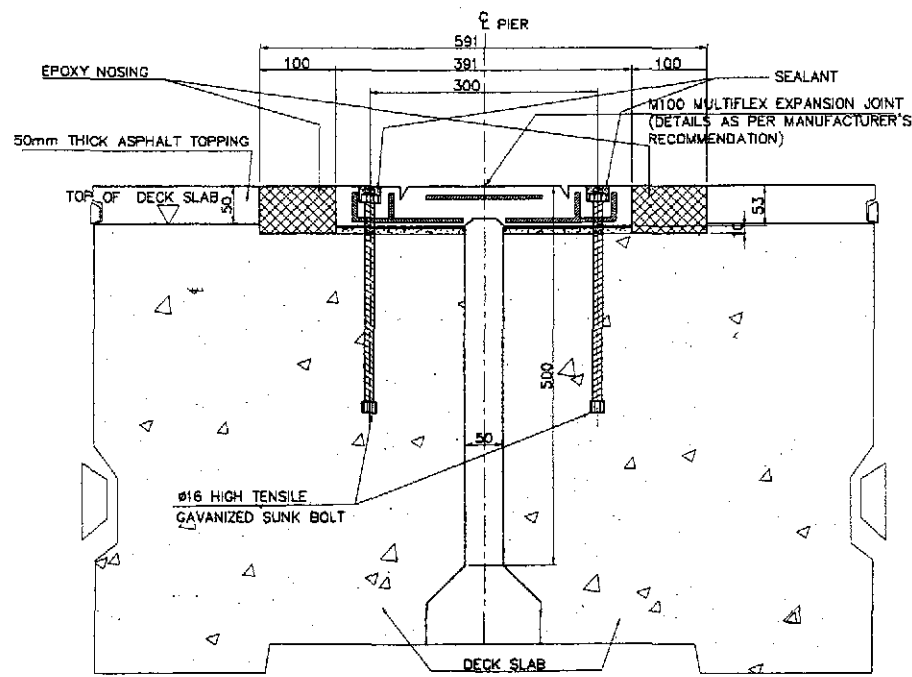
2 PREMOLDED JOINT FILLER DETAILS
SCALE AS SHOWN



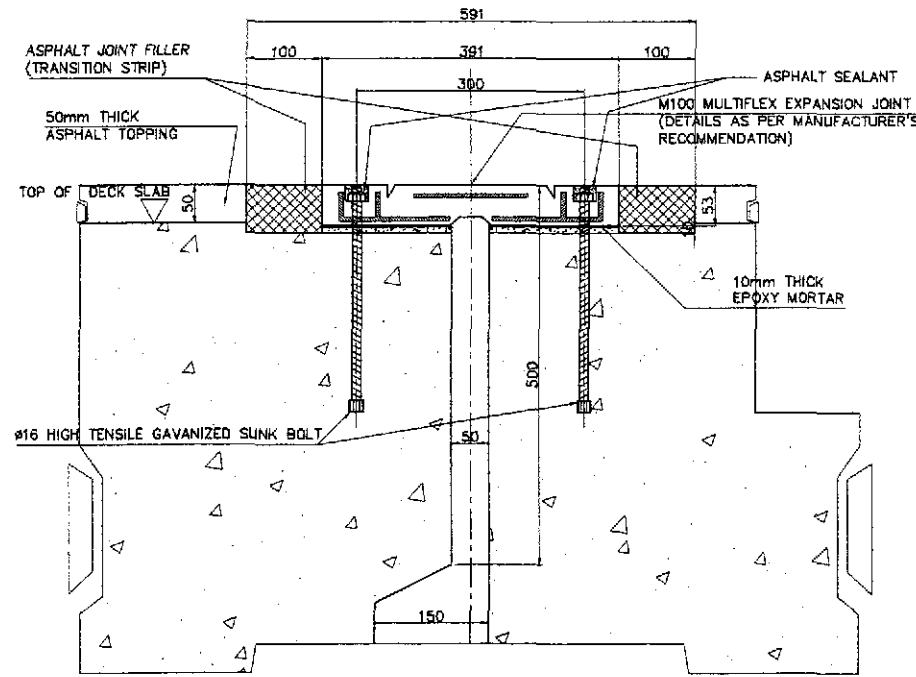
SCHEDULE OF REINFORCEMENT													
LOCATION	BAR MARK	SIZE (mm)	BEND TYPE	DIMENSION(mm) OUT TO OUT					LENGTH (mm)	NO. REQ'D.	UNIT WEIGHT (kg/m)	WEIGHT(kgs.)	REMARKS
				a	b	c	d	e			Grade 40		
RISER (PIER FIX-FIX) GIRDER	E1	10	A	350	700				1400	48	0.617	42	1. ESTIMATED QUANTITY FOR ONE(1) PIER ONLY.
	E2	10	A	350	500				1200	64	0.617	48	
											TOTAL=	90	2. ESTIMATED QUANTITY FOR ONE(1) ABUT.
RISER (PIER EXP-EXP) GIRDER	E1	10	A	350	700				1400	48	0.617	42	
	E2	10	A	350	500				1200	64	0.617	48	
											TOTAL=	90	
RISER (ABUT EXP) GIRDER	E1	10	A	350	700				1400	24	0.617	21	
	E2	10	A	350	500				1200	32	0.617	24	
											TOTAL=	45	
RISER (PIER 1 & 2) ANCHOR BAR	E1	10	A	350	1350				2050	15	0.617	19	
	E2	10	A	350	400				1100	42	0.617	29	
											TOTAL=	48	
RISER (PIER 4, 5, 7 & 8) ANCHOR BAR	E1	10	A	350	1200				1700	15	0.617	16	
	E2	10	A	350	400				1100	39	0.617	27	
											TOTAL=	43	
SPIRAL (PIER 4, 5, 7 & 8) ANCHOR BAR	A1	6	B	50	250				15163	6	0.222	20	
	A2	6	B	50	200				13058	6	0.222	17	
											TOTAL=	37	
SPIRAL (PIER 1 & 2) ANCHOR BAR	A3	6	B	50	250				15163	9	0.222	30	
	A4	6	B	50	200				15571	9	0.222	31	
											TOTAL=	61	

THE REINFORCEMENT SHOWN ON THIS TABLE IS FOR REFERENCE ONLY. THE CONTRACTOR SHOULD CHECK AND VERIFY ALL DIMENSIONS, SIZES AND QUANTITIES OF REINFORCEMENT.

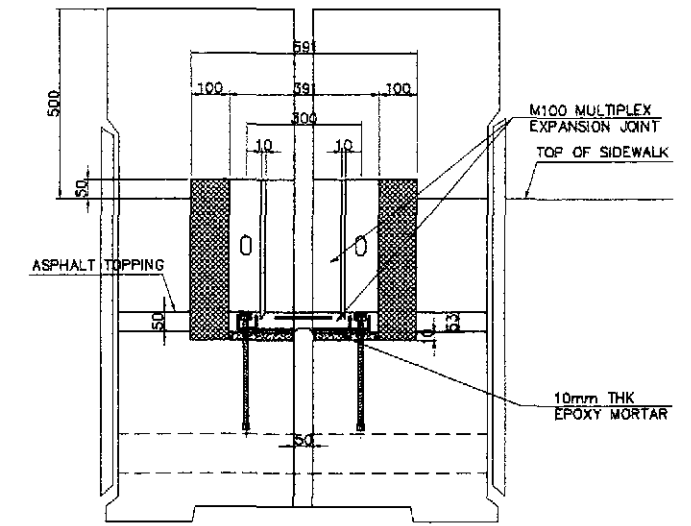
	DATE	SIGNATURE	REPUBLIC OF THE PHILIPPINES DEPARTMENT OF PUBLIC WORKS AND HIGHWAYS				PROJECT AND LOCATION :	SCALE :	SHEET CONTENTS :	SHEET NO. :	
	DESIGNED	10/17/02	P. DE VESUS	BUREAU OF DESIGN				THE DETAILED DESIGN STUDY ON UPGRADING INTER-URBAN HIGHWAY SYSTEM ALONG THE PAN-PHILIPPINE HIGHWAY (Plaridel, Cabanatuan and San Jose Bypasses)	AS SHOWN	BRIDGE NO.14 TALAVERA RIVER BRIDGE RISER REINF. & BEARING PADS DET.	B14M-82
	CHECKED	10/19/02	J.C. SANTOS	Submitted By:	Reviewed By:	Recommended By:	Approved By:	FULL SIZE A1	(ULTIMATE STAGE)		
SUBMITTED	10/21/02	Mr. Kandi	DANILO C. TRAJANO Project Director	ADRIANO M. DOROY Chief, Bridges Division	GILBERTO S. REYES Director IV (CIC)	MANUEL M. BONDAN Undersecretary	SIMEON A. DATUMANONG Secretary				



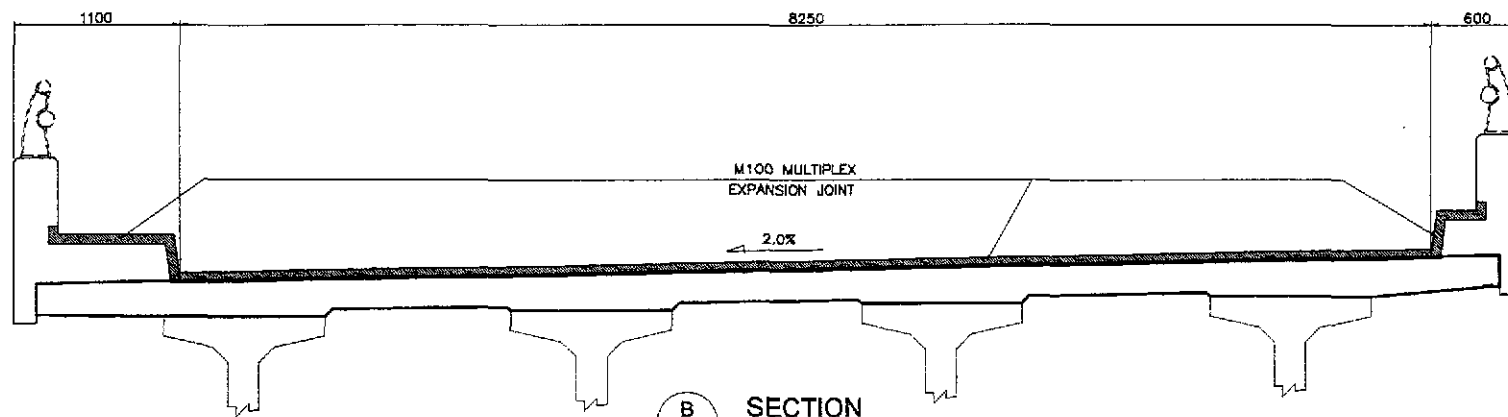
C SECTION @ PIER P3 & P6
SCALE 1:5



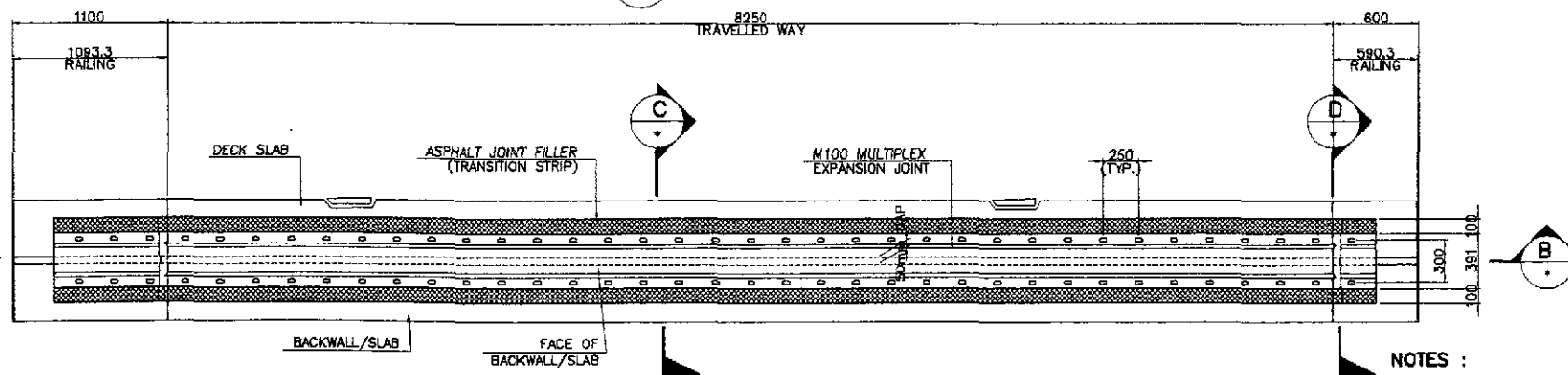
C1 SECTION @ ABUT. A1 & A2
SCALE 1:5



D SECTION
SCALE 1:10



B SECTION
SCALE 1:25



A PLAN
SCALE 1:25

1 EXPANSION JOINT DETAILS @ ABUTMENT AND PIERS
SCALE AS SHOWN

A.) QUALITY TESTING OF RUBBER COMPOUND

PROPERTIES	SPECIFICATION
HARDNESS (SHORE A)	50 ± 5
TENSILE STRENGTH (MPA)	13 MIN
ELONGATION AT BREAK (%)	400 MIN
COMPRESSION SET (AFTER 22h AT 70°C)	20% MAX
OZONE RESISTANCE (AFTER 72h AT 40°C, 20% STRAIN 100 ppm)	NO CRACK
OIL RESISTANCE IN ASTM NO. 3 OIL (168h AT 25°C. VOLUME CHANGE)	15% MAX

B.) DIMENSION CHECK ON METAL PLATES

DIMENSION	SPECIFICATION
LENGTH	± 1
WIDTH	0 TO -1.5 MIN
THICKNESS	± 0.5 MIN

C.) QUALITY CHECK

PROPERTY	SPECIFICATION
DIMENSION	ACCORDING TO PRODUCT DRAWING
SURFACE APPEARANCE	NO VISIBLE CRACK
RUBBER COVER HARDNESS (SHORE A)	50 ± 5

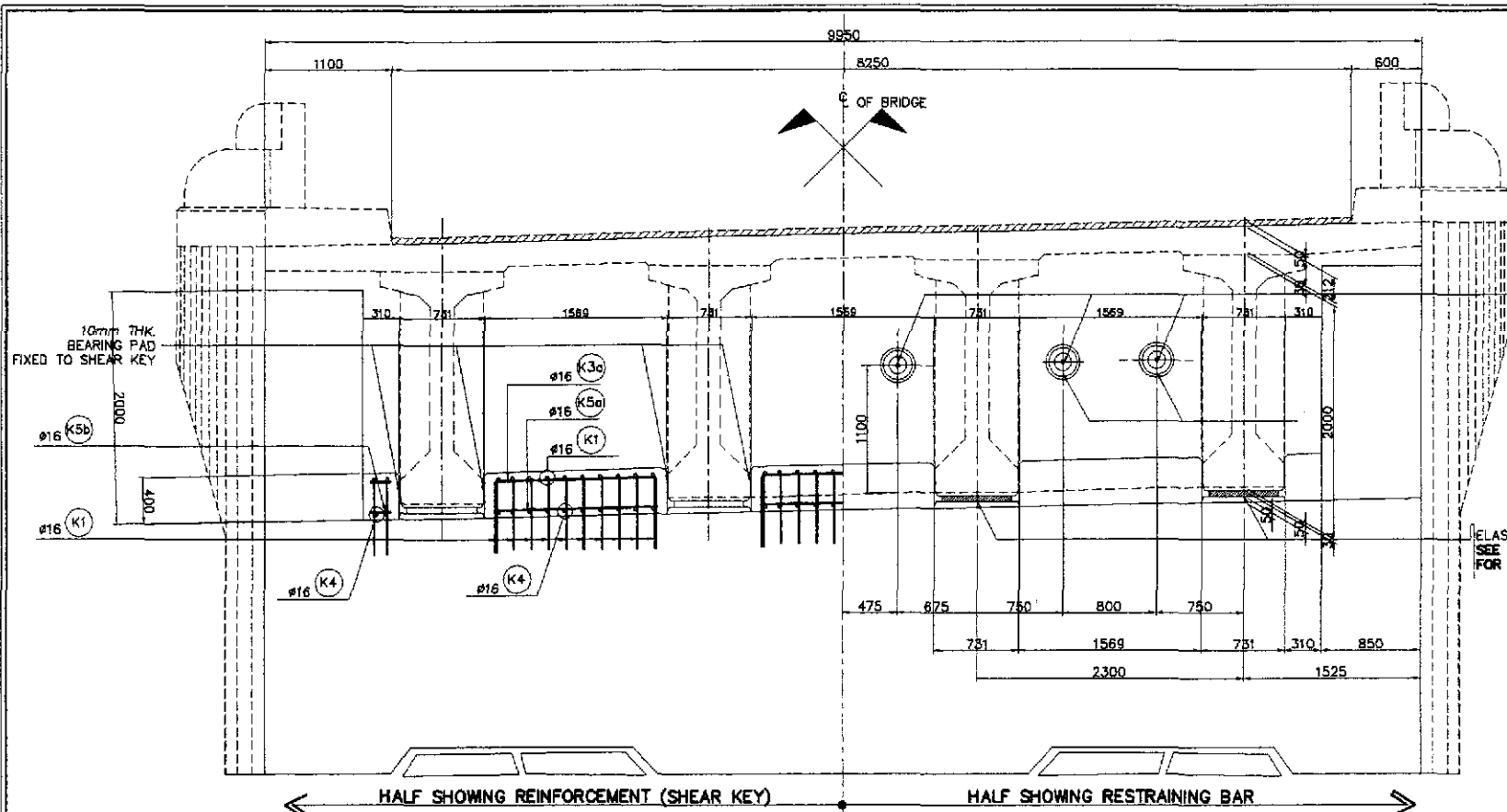
INSTALLATION MATERIALS

1. EPOXY BEDDING
2. EPOXY NOSING
3. BOLT / NUTS
4. SEALANT

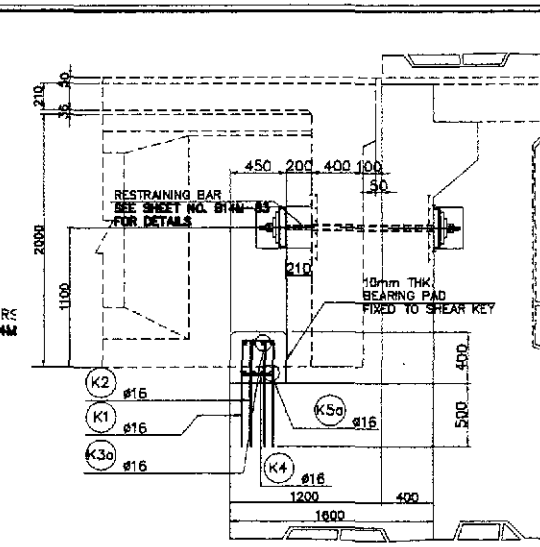
LOCATION	EXPANSION JOINT TYPE	MOVEMENT (mm)	LENGTH (m)
ABUT. A1	MULTIFLEX M100	±50(TOTAL≈100mm)	10.20
ABUT. A2	MULTIFLEX M100	±50(TOTAL≈100mm)	10.20
PIER 3	MULTIFLEX M100	±50(TOTAL≈100mm)	10.20
PIER 6	MULTIFLEX M100	±50(TOTAL≈100mm)	10.20

NOTES :

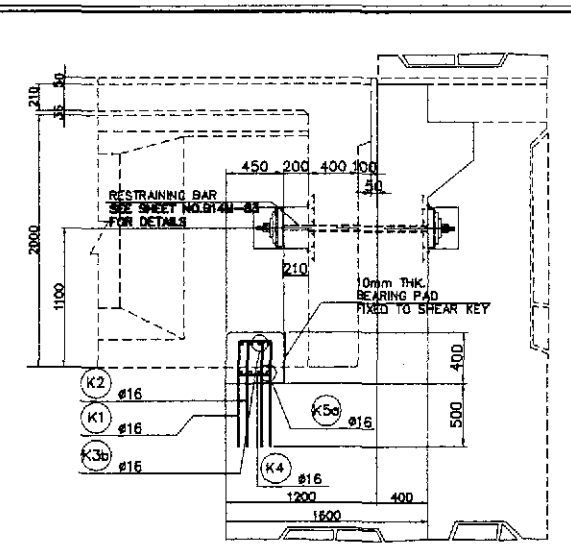
1. THE EXPANSION JOINT SHALL BE MULTIFLEX M100 OR EQUIVALENT.
2. THE CONTRACTOR SHALL GUARANTEE WATERTIGHTNESS OF EXPANSION JOINTS INCLUDING SIDEWALK JOINTS.
3. THE EXPANSION JOINT SHALL HAVE A 15-YEAR WARRANTY PERIOD. DAMAGES ON THE JOINTS WITHIN THIS PERIOD SHALL BE REPLACED BY THE CONTRACTOR.
4. VERIFY ACTUAL DIMENSIONS OF EXPANSION JOINT BLOCK-OUT AS PER MANUFACTURER'S RECOMMENDATION.



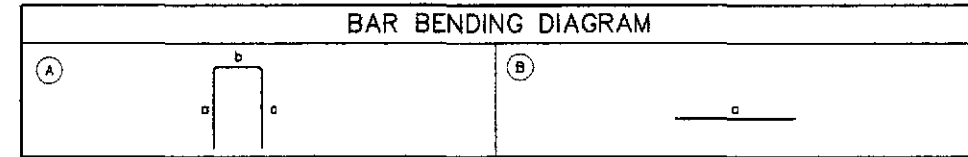
HALF SHOWING REINFORCEMENT (SHEAR KEY) HALF SHOWING RESTRAINING BAR
A ELEVATION SCALE 1:30



C SECTION SCALE 1:30

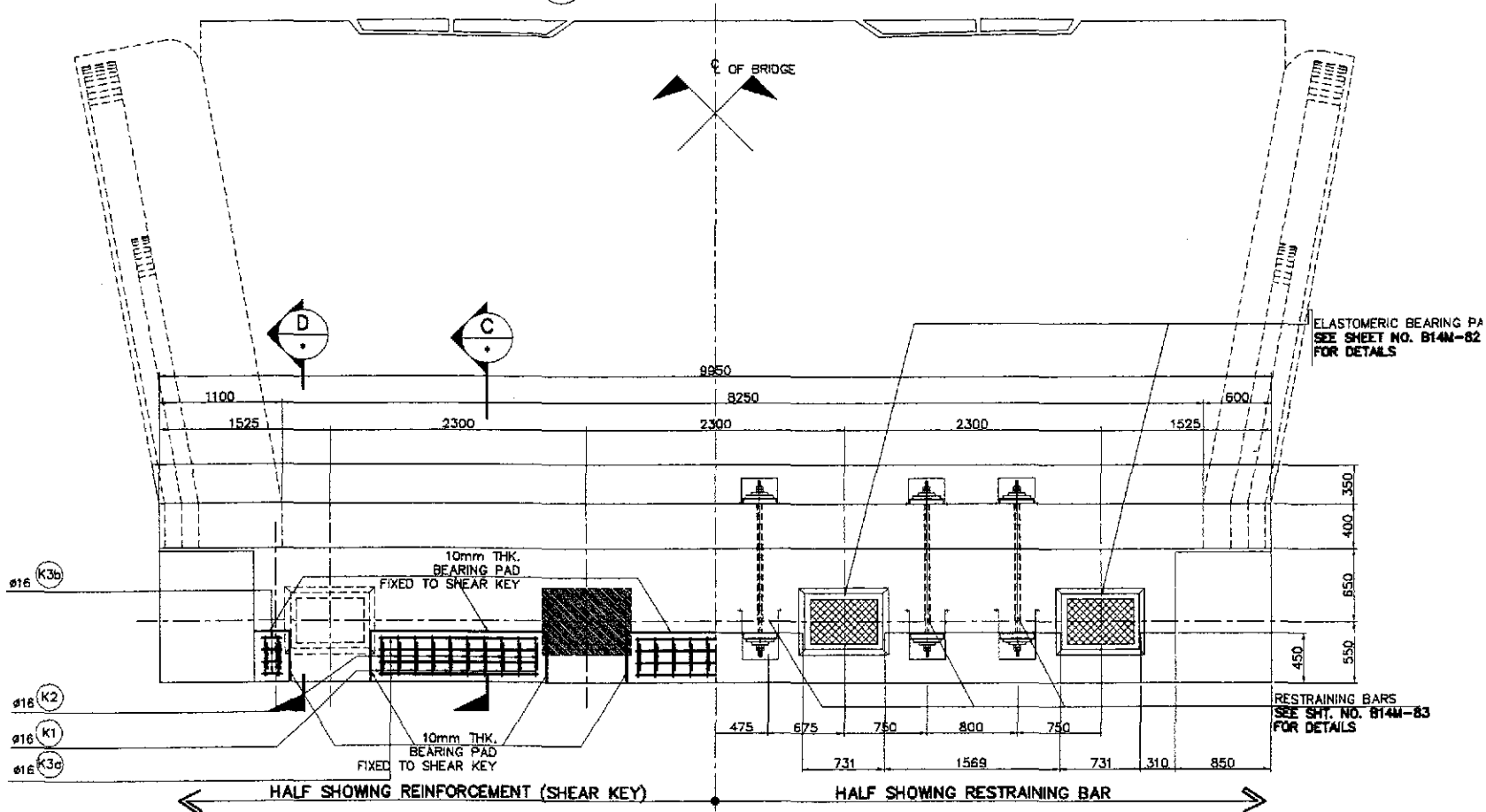


D SECTION SCALE 1:30



SCHEDULE OF REINFORCEMENT

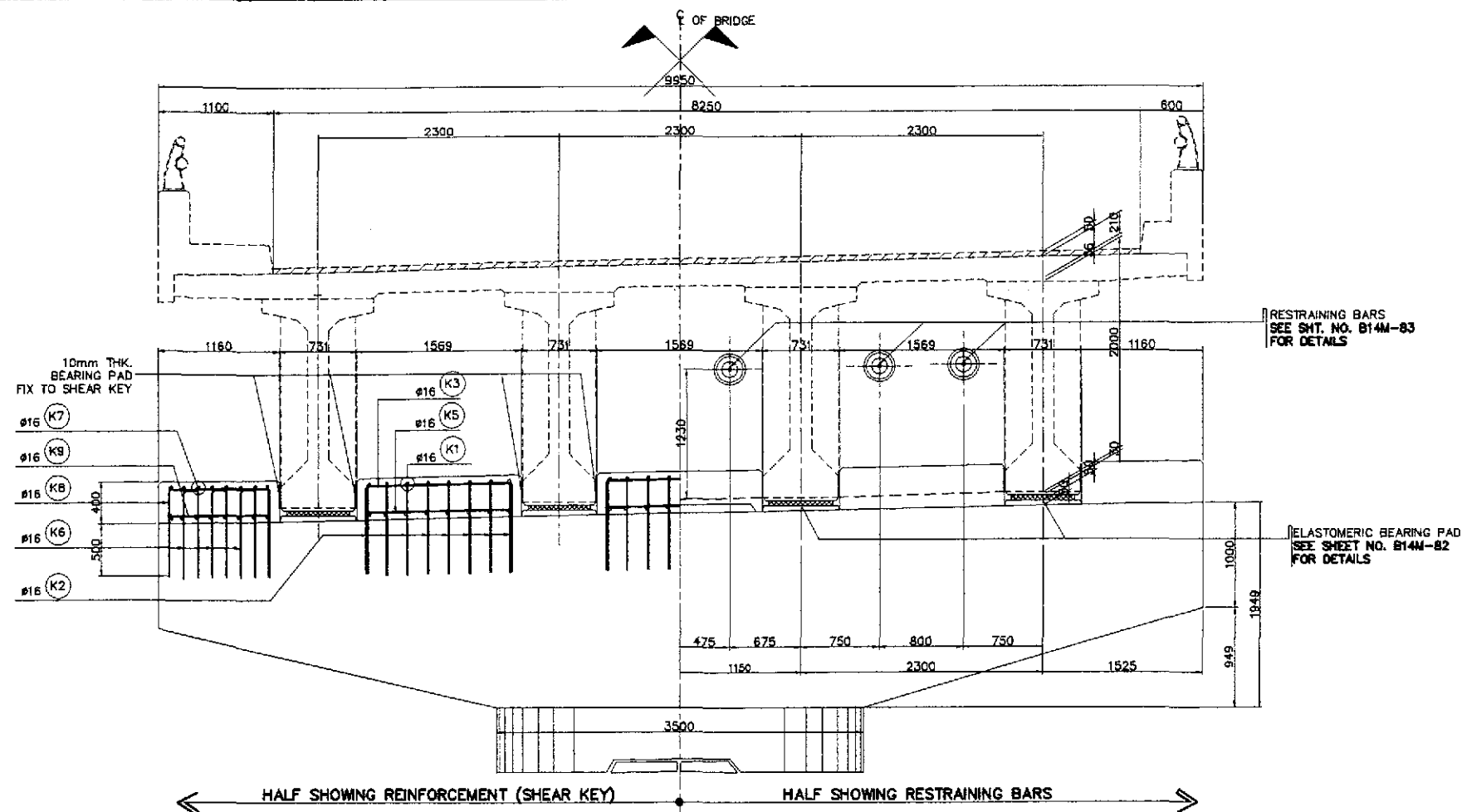
LOCATION	BAR MARK	SIZE (mm)	BEND TYPE	DIMENSION (mm) OUT TO OUT					LENGTH (mm)	NO. REQ'D.	UNIT WEIGHT (kg/m)	WEIGHT (kgs.)	
				a	b	c	d	e				Grade 40	Grade 60
SHEAR KEY PIER P1 & P6 (EXP-EXP)	K1	16	A	850	500				2200	48	1.578		167
	K2	16	A	850	170				1870	48	1.578		142
	K3	16	A	850	1470				3170	24	1.578		120
	K4	16	B	500					500	48	1.578		38
	K5	16	B	1470					1470	24	1.578		56
	K6	16	A	850	150				1850	108	1.578		315
	K7	16	A	850	1060				2760	36	1.578		157
	K8	16	A	850	2600				4300	16	1.578		109
	K9	16	B	1060					1060	36	1.578		60
	K10	16	B	2600					2600	16	1.578		66
TOTAL WEIGHT/PIER											1230		
TOTAL WEIGHT/2 PIERS											2460		
SHEAR KEY PIER P1 & P2 (EXP-EXP)	K1	20	A	850	540				2240	48	1.578		170
	K2	20	A	850	180				1880	48	1.578		142
	K3	16	A	850	1470				3170	24	1.578		120
	K4	16	B	540					540	48	1.578		41
	K5	16	B	1470					1470	24	1.578		56
	K6	16	A	850	150				1850	108	1.578		315
	K7	16	A	850	1060				2760	36	1.578		157
	K8	16	A	850	2600				4300	16	1.578		109
	K9	16	B	1060					1060	36	1.578		60
	K10	16	B	2600					2600	16	1.578		66
TOTAL WEIGHT/PIER											1236		
TOTAL WEIGHT/2 PIERS											2472		
SHEAR KEY PIER P4, P5, P7 & P8 (EXP-EXP)	K1	20	A	850	540				2240	48	1.578		170
	K2	20	A	850	180				1880	48	1.578		142
	K3	16	A	850	1470				3170	24	1.578		120
	K4	16	B	540					540	48	1.578		41
	K5	16	B	1470					1470	24	1.578		56
	K6	16	A	850	150				1850	108	1.578		315
	K7	16	A	850	1060				2760	36	1.578		157
	K8	16	A	850	2600				4300	16	1.578		109
	K9	16	B	1060					1060	36	1.578		60
	K10	16	B	2600					2600	16	1.578		66
TOTAL WEIGHT/PIER											1236		
TOTAL WEIGHT/4 PIERS											4944		
SHEAR KEY ABUTMENT	K1	16	A	750	350				2050	34	1.578		110
	K2	16	A	750	230				1930	34	1.578		104
	K3a	16	A	750	1470				3170	12	1.578		60
	K3b	16	A	750	210				1910	8	1.578		24
	K4	16	B	370					370	34	1.578		20
	K5a	16	B	1490					1490	12	1.578		28
K5b	16	B	210					210	8	1.578		3	
TOTAL WEIGHT/ABUT.											349		
TOTAL WEIGHT FOR TWO(2) ABUT.											698		



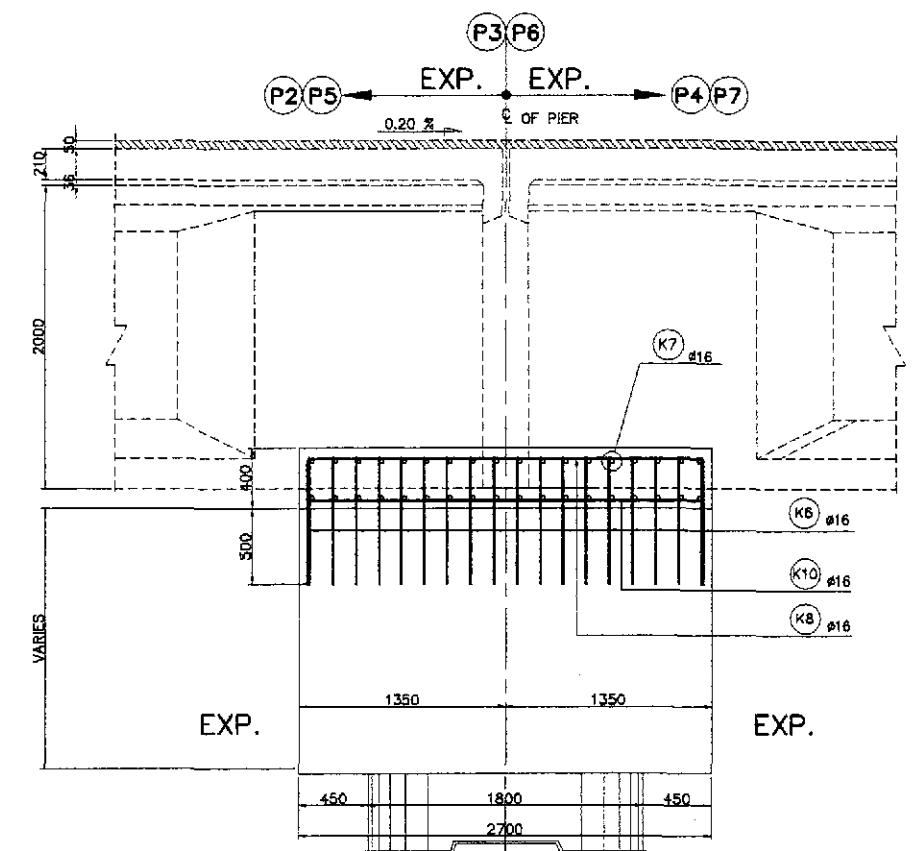
HALF SHOWING REINFORCEMENT (SHEAR KEY) HALF SHOWING RESTRAINING BAR
B PLAN SCALE 1:30
1 REINF. DETAILS OF SHEAR KEY (ABUTMENT A1 & A2) SCALE AS SHOWN

THE REINFORCEMENT SHOWN ON THIS TABLE IS FOR REFERENCE ONLY. THE CONTRACTOR SHOULD CHECKED AND VERIFY ALL DIMENSIONS, SIZES AND QUANTITIES OF REINFORCEMENT.

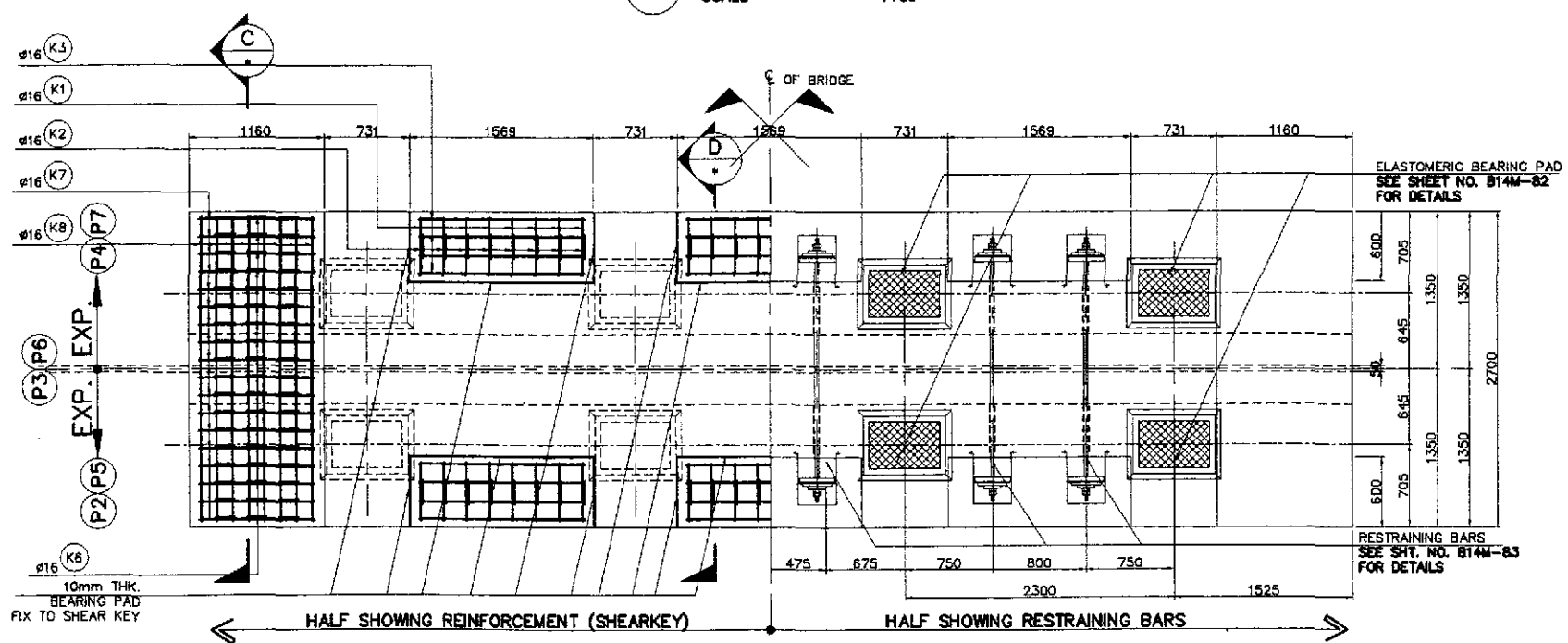
	DESIGNED	DATE	SIGNATURE		REPUBLIC OF THE PHILIPPINES			PROJECT AND LOCATION :		SCALE :	SHEET CONTENTS :	SHEET NO. :
	CHECKED	10/17/92	F. P. DE JESUS		DEPARTMENT OF PUBLIC WORKS AND HIGHWAYS			THE DETAILED DESIGN STUDY ON UPGRADING INTER-URBAN HIGHWAY SYSTEM ALONG THE PAN-PHILIPPINE HIGHWAY (Plaridel, Cabanatuan and San Jose Bypasses)		AS SHOWN		
SUBMITTED	10/21/92	M. REYES	BUREAU OF DESIGN			CABANATUAN BYPASS - CONTRACT PACKAGE IV		FULL SIZE A1				



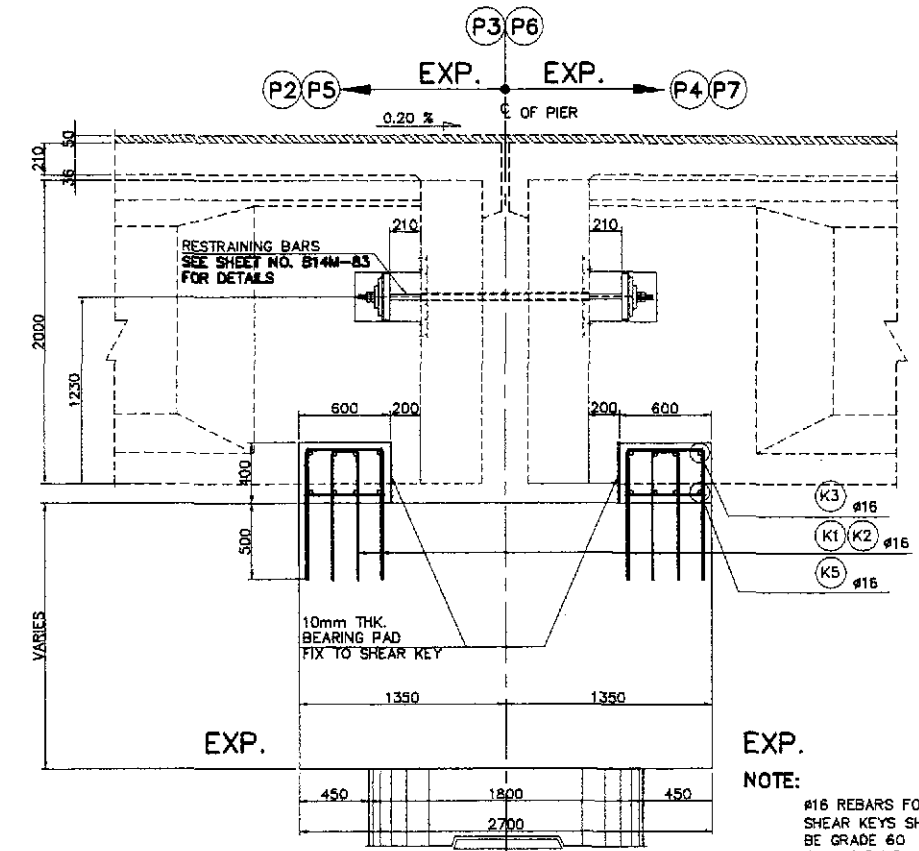
A ELEVATION
SCALE 1:30



C SECTION
SCALE 1:25



B PLAN
SCALE 1:30

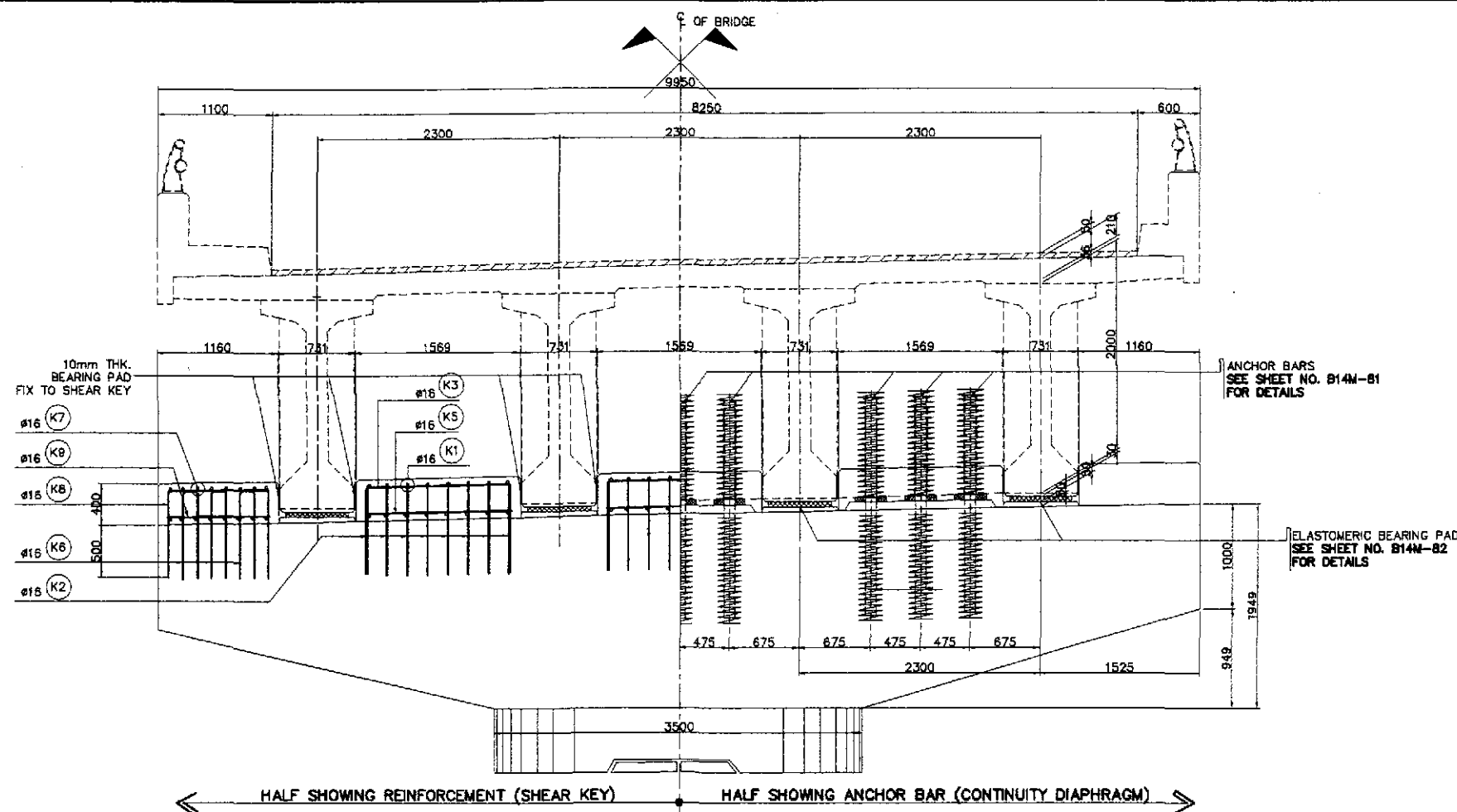


D SECTION
SCALE 1:25

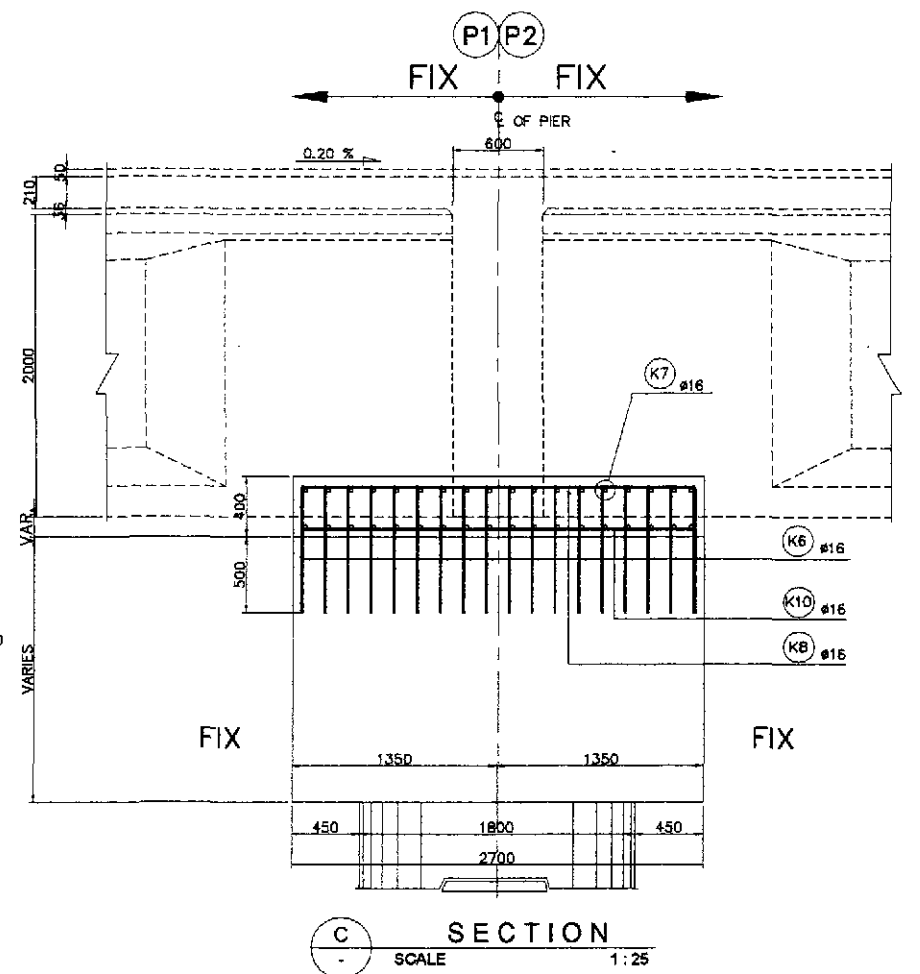
NOTE:
#16 REBARS FOR SHEAR KEYS SHALL BE GRADE 60
F_y = 415 MPa

1 REINF. DETAILS OF SHEAR KEY (PIERS P3 & P6, EXP.-EXP. PIERS)
SCALE AS SHOWN

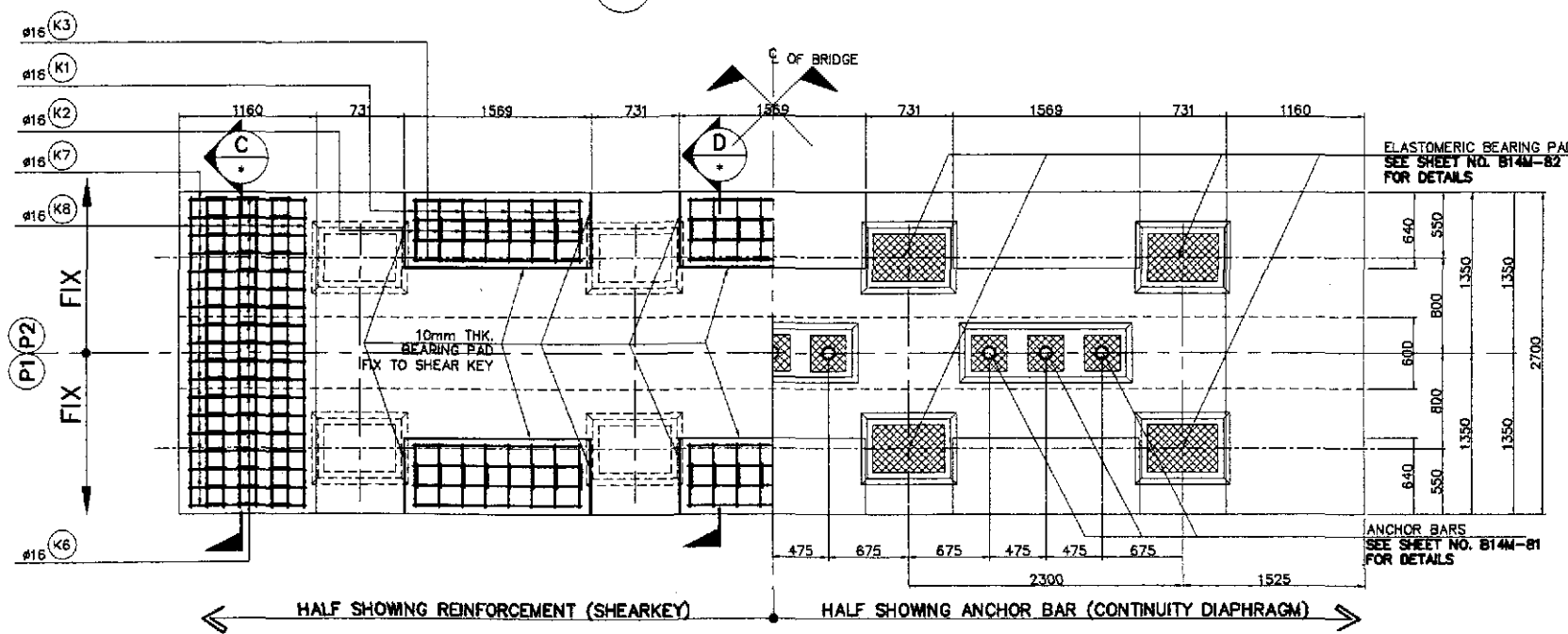
	DESIGNED	DATE	SIGNATURE		REPUBLIC OF THE PHILIPPINES DEPARTMENT OF PUBLIC WORKS AND HIGHWAYS			PROJECT AND LOCATION : THE DETAILED DESIGN STUDY ON UPGRADING INTER-URBAN HIGHWAY SYSTEM ALONG THE PAN-PHILIPPINE HIGHWAY (Plaridel, Cabanatuan and San Jose Bypasses) CABANATUAN BYPASS - CONTRACT PACKAGE IV	SCALE : AS SHOWN FULL SIZE A1	SHEET CONTENTS : BRIDGE NO.14 TALAVERA RIVER BRIDGE REINF. DETAILS OF SHEAR KEY (PIERS P3 & P6, EXP.-EXP.PIERS) (ULTIMATE STAGE)	SHEET NO. : B14M-86
	CHECKED	10/19/07	F.P. DE JESUS		BUREAU OF DESIGN						
	SUBMITTED	10/21/07	Mr. Bando		Submitted By: DANILLO C. TRAJANO Project Director	Reviewed By: ADRIANO M. DOROY Chief, Bridges Division	Recommended By: GILBERTO S. REYES Director IV (OIC)				



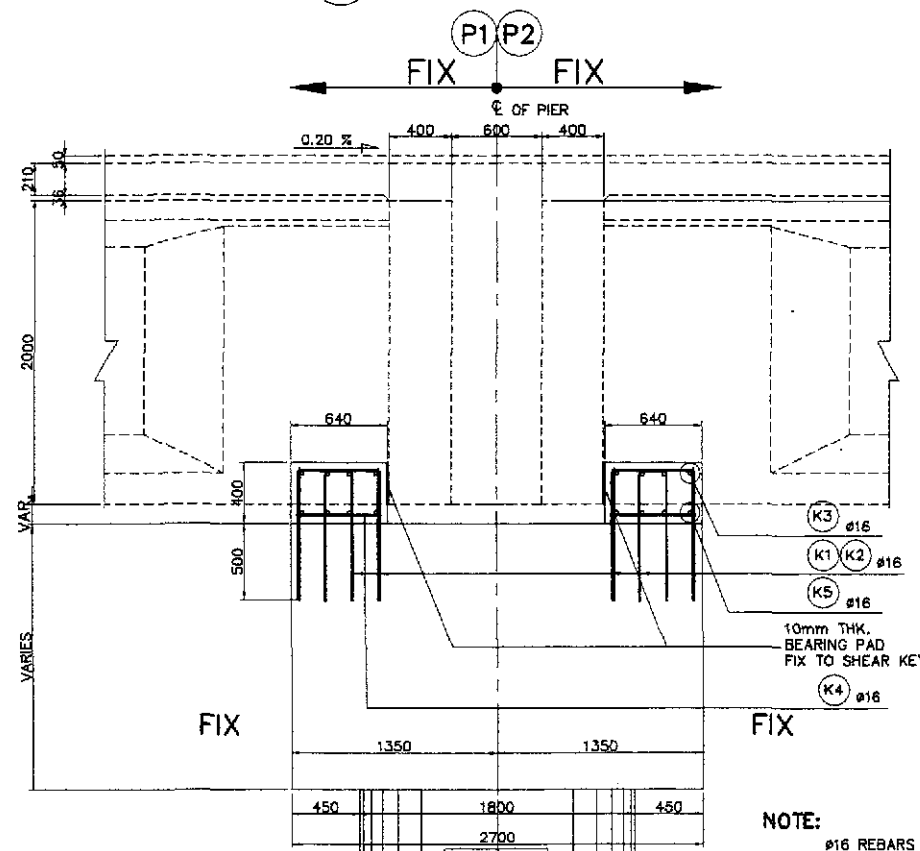
A ELEVATION
SCALE 1:30



C SECTION
SCALE 1:25



B PLAN
SCALE 1:30

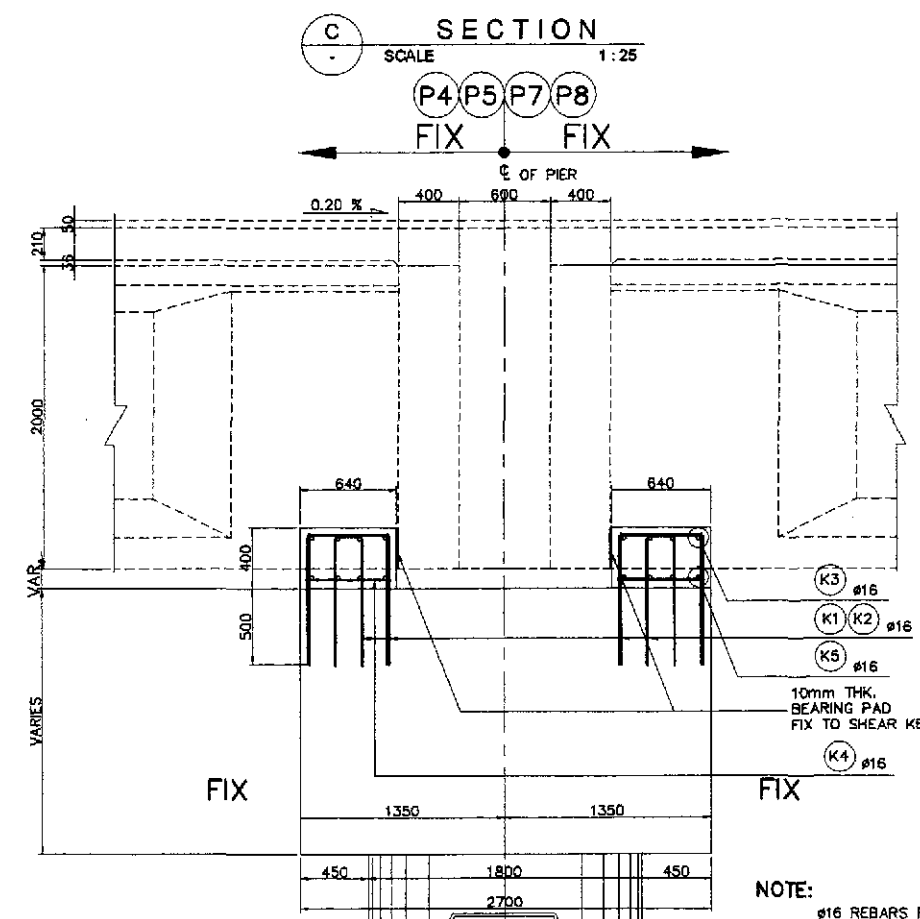
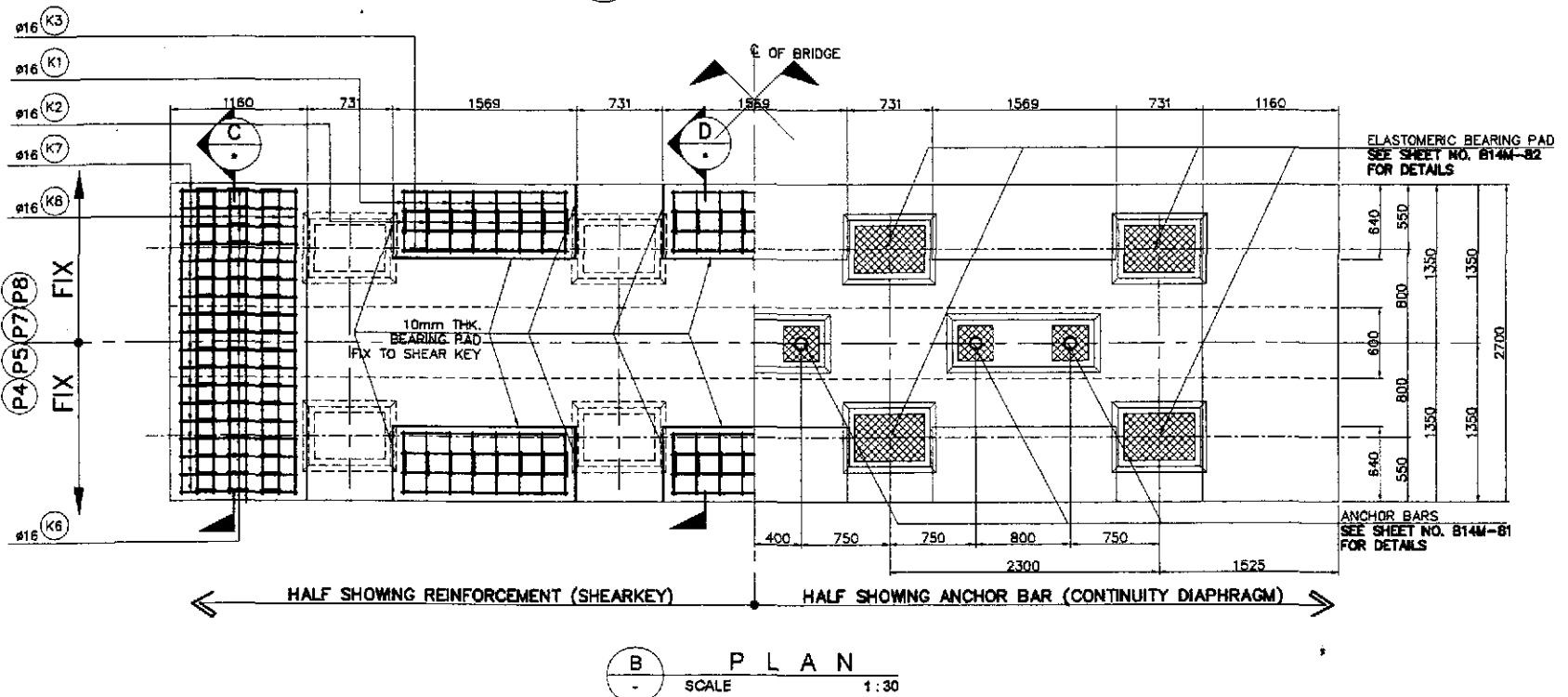
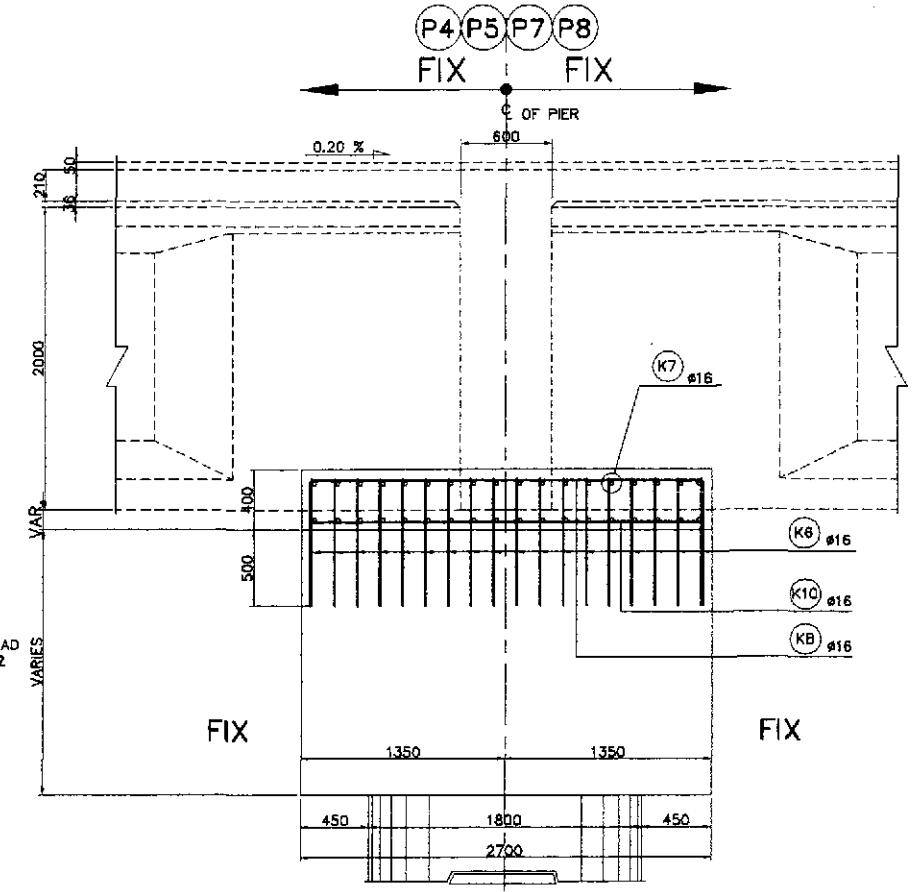
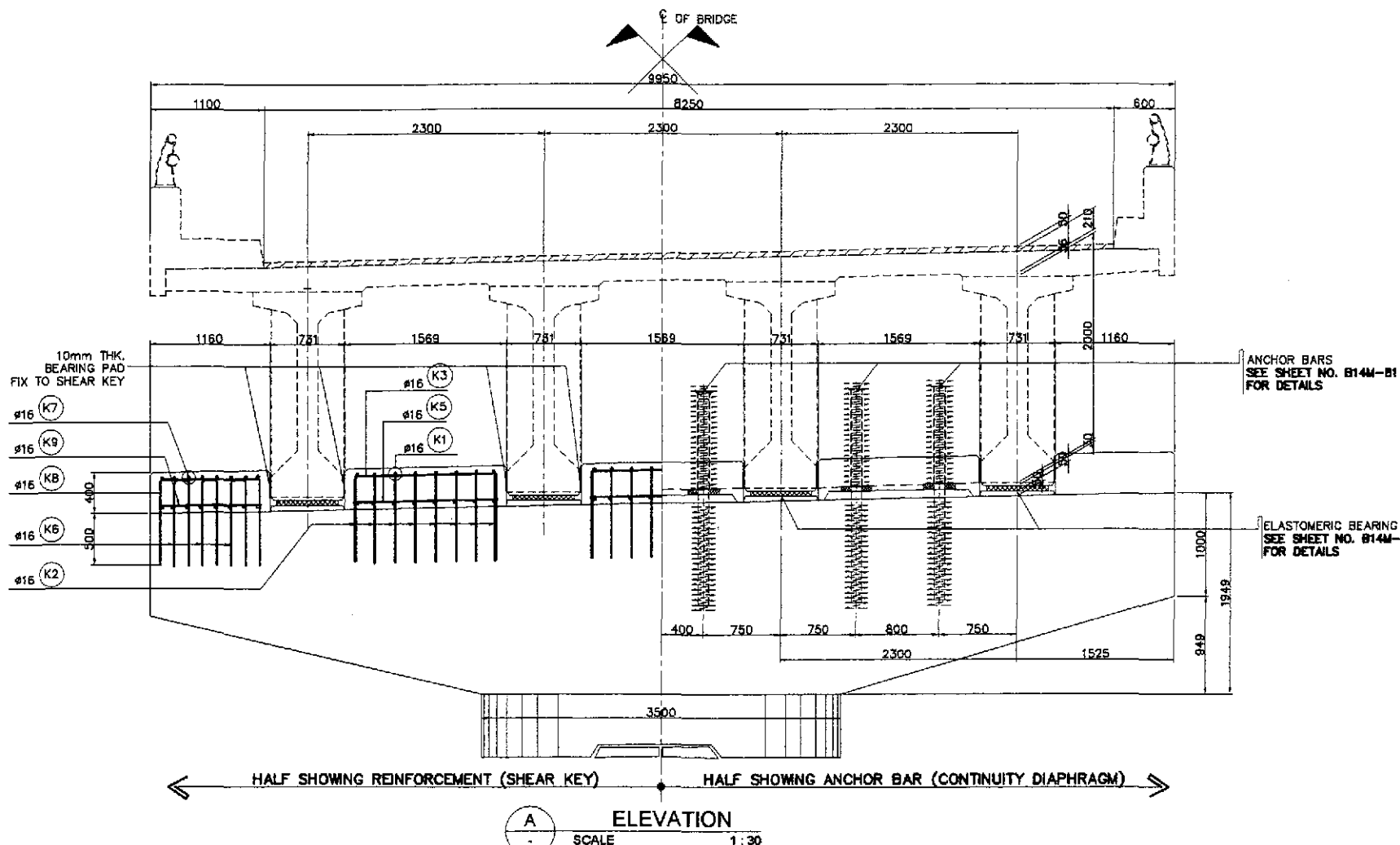


D SECTION
SCALE 1:25

NOTE:
#16 REBARS FOR SHEAR KEYS SHALL BE GRADE 60
F_y = 415 MPa

1 REINF. DETAILS OF SHEAR KEY (PIERS P1 & P2, FIX-FIX PIERS)
SCALE AS SHOWN

	DESIGNED	DATE	SIGNATURE		REPUBLIC OF THE PHILIPPINES DEPARTMENT OF PUBLIC WORKS AND HIGHWAYS					PROJECT AND LOCATION :	SCALE :	SHEET CONTENTS :	SHEET NO. :
	CHECKED	10/07/01	P. DE JESUS		BUREAU OF DESIGN					THE DETAILED DESIGN STUDY ON UPGRADING INTER-URBAN HIGHWAY SYSTEM ALONG THE PAN-PHILIPPINE HIGHWAY (Plaridel, Cabanatuan and San Jose Bypasses)	AS SHOWN	BRIDGE NO.14 TALAVERA RIVER BRIDGE REINF. DETAILS OF SHEAR KEY (PIERS P1 & P2, FIX-FIX PIERS) (ULTIMATE STAGE)	B14M-87
	SUBMITTED	10/21/01	U. C. SANTOS		Submitted By:	Reviewed By:	Recommended By:	Recommended By:	Approved By:	FULL SIZE A1			
			DANILLO C. TRAJANO Project Director	ADRIANO M. DOROY Chief, Bridge Division	GILBERTO S. REYES Director IV (GIC)	MANUEL M. BONOAN Undersecretary	SIMEON A. DATUMANONG Secretary	CABANATUAN BYPASS - CONTRACT PACKAGE IV					

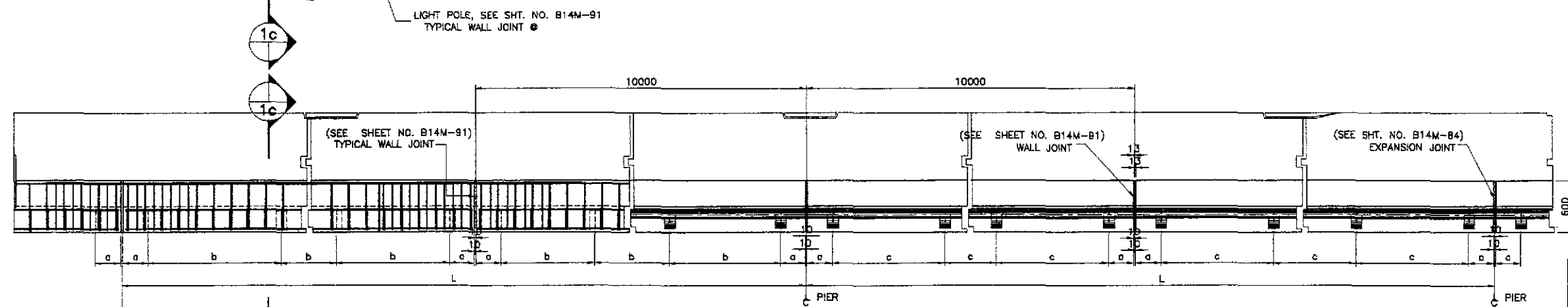
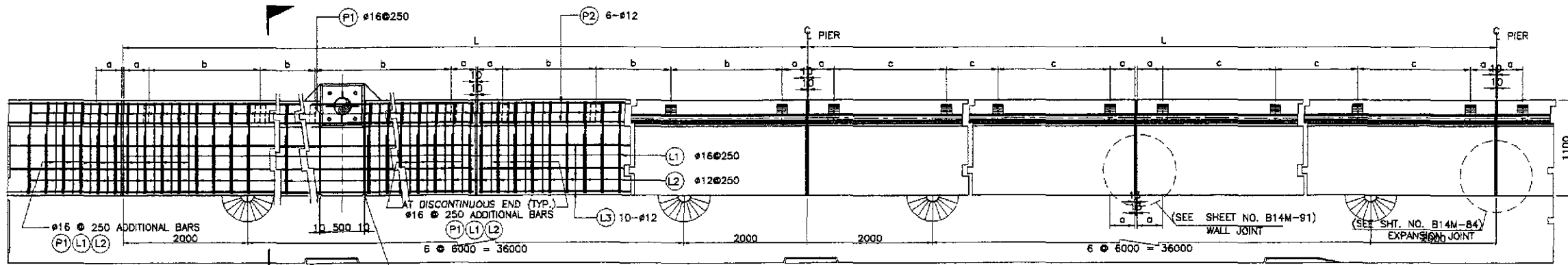


1 DETAIL OF SHEAR KEY AND ANCHOR BAR AT PIERS P4, P5, P7, & P8 (FIX-FIX) SHOWN SCALE AS

D SECTION SCALE 1:25

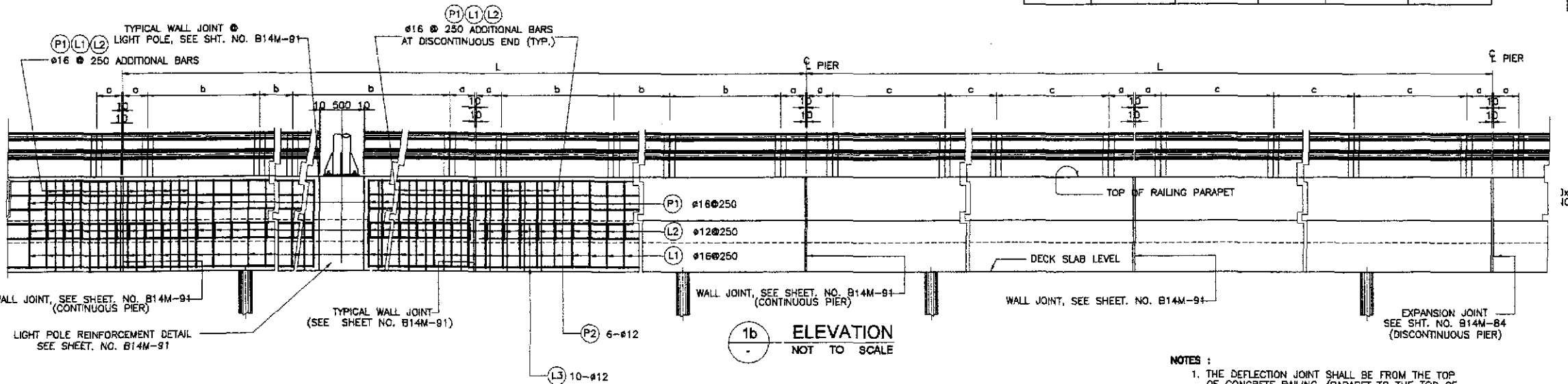
NOTE: #16 REBARS FOR SHEAR KEYS SHALL BE GRADE 60 Fy = 415 MPa

	DESIGNED	DATE	SIGNATURE		REPUBLIC OF THE PHILIPPINES			PROJECT AND LOCATION : THE DETAILED DESIGN STUDY ON UPGRADING INTER-URBAN HIGHWAY SYSTEM ALONG THE PAN-PHILIPPINE HIGHWAY (Pinaridel, Cabanatuan and San Jose Bypasses) CABANATUAN BYPASS - CONTRACT PACKAGE IV	SCALE : AS SHOWN FULL SIZE A1	SHEET CONTENTS : BRIDGE NO.14 TALAVERA RIVER BRIDGE REINF. DETAILS OF SHEAR KEY (PIERS P4,P5,P7 & P8, FIX-FIX PIERS) (ULTIMATE STAGE)	SHEET NO. : B14M-88
	CHECKED	10/19/07	J. SANTOS		DEPARTMENT OF PUBLIC WORKS AND HIGHWAYS						
	SUBMITTED	10/21/07	MANUEL M. BONDAN		BUREAU OF DESIGN Submitted By: DANILLO C. TRAJANO Project Director	OFFICE OF THE SECRETARY Reviewed By: ADRIANO M. DORCY Chief, Bridges Division	Recommended By: GILBERTO S. REYES Director IV (CIC)				



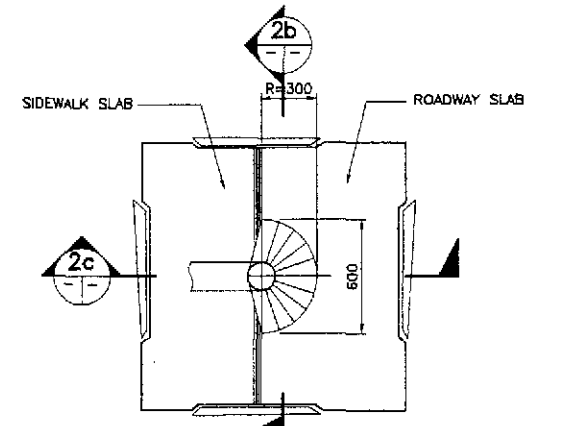
1a PLAN NOT TO SCALE

SCHEDULE OF RAILING					
SPAN LENGTH (m)	NO. OF DEFLECTION JT. INSIDE SPAN	NO. OF RAIL POST PER SIDE/SPAN	a (mm)	b (mm)	c (mm)
40.00	3	24	250	1895	1895

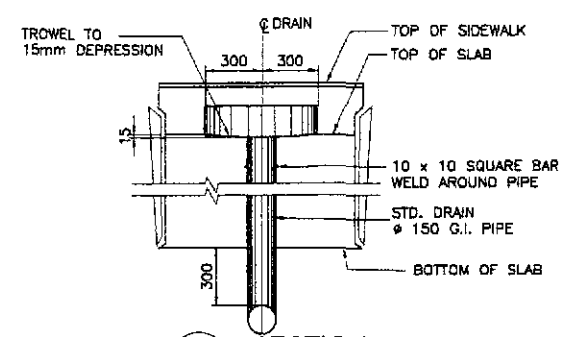


1b ELEVATION NOT TO SCALE

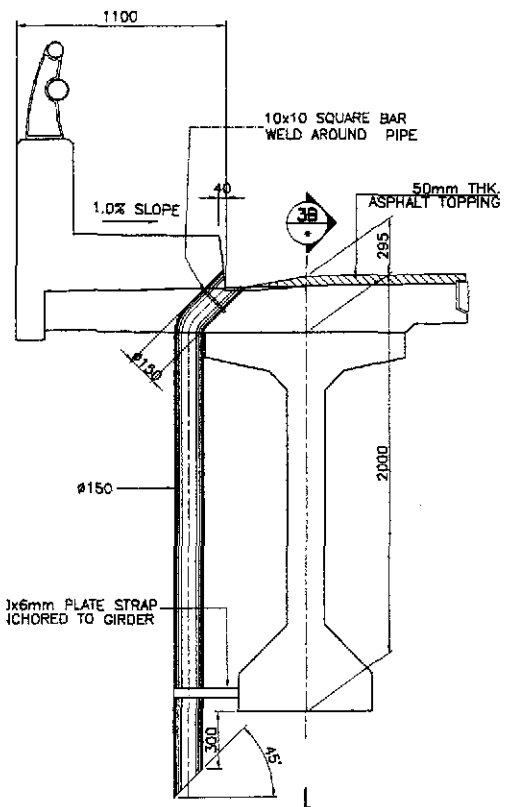
1 DETAILS OF SIDEWALK, RAILING AND DRAIN SCALE AS SHOWN



2a PLAN



2b SECTION

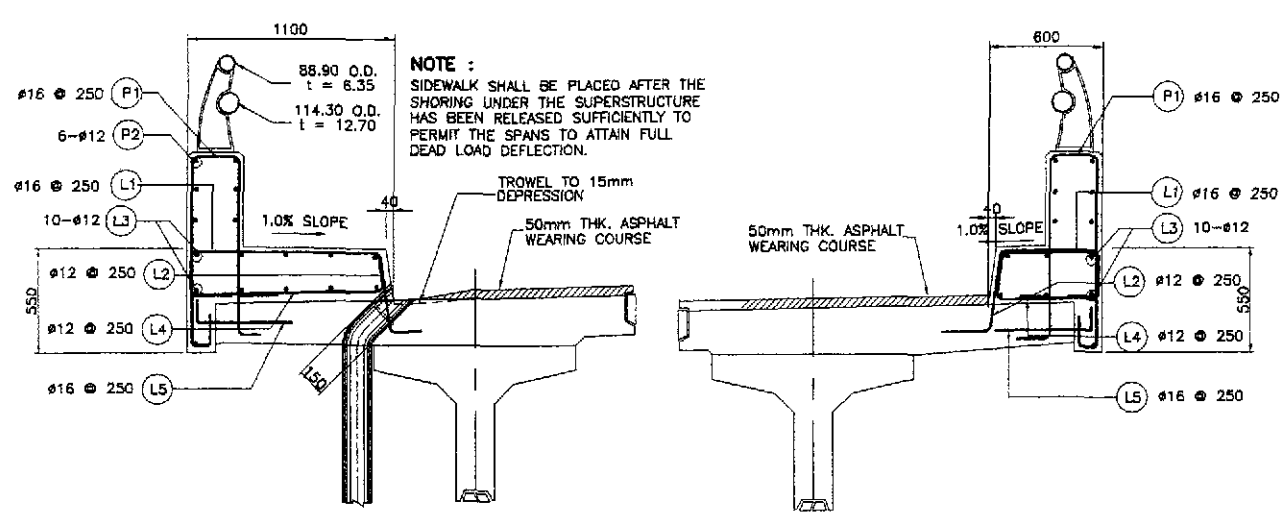


2c SECTION

2 TYPICAL DRAIN DETAILS SCALE 1:20

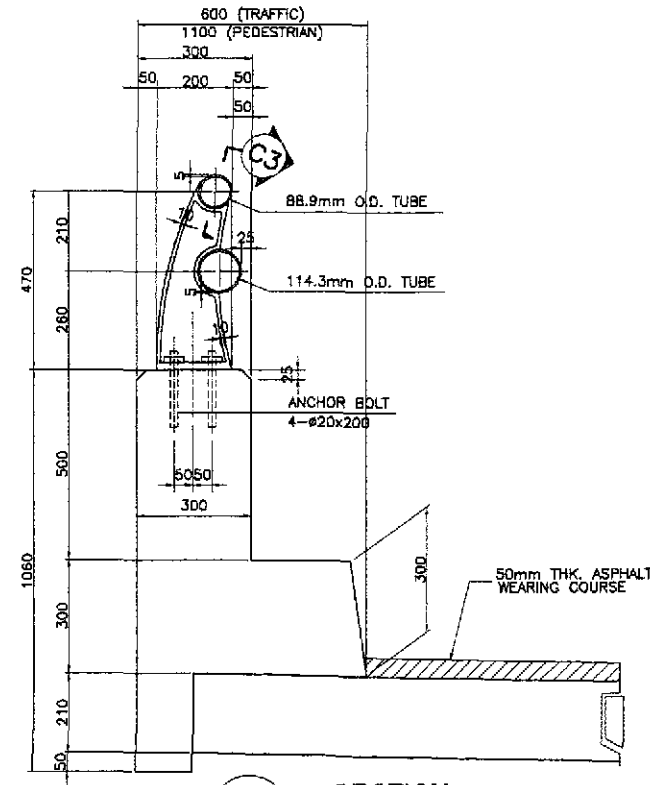
- NOTES:
1. THE DEFLECTION JOINT SHALL BE FROM THE TOP OF CONCRETE RAILING /PARAPET TO THE TOP OF DECK SLAB.
 2. NUMBER OF DEFLECTION JOINT INSIDE SPAN DOES NOT INCLUDE LIGHT POLE.

	DESIGNED	DATE	SIGNATURE		REPUBLIC OF THE PHILIPPINES			PROJECT AND LOCATION : THE DETAILED DESIGN STUDY ON UPGRADING INTER-URBAN HIGHWAY SYSTEM ALONG THE PAN-PHILIPPINE HIGHWAY (Plaridel, Cabanatuan and San Jose Bypasses) CABANATUAN BYPASS - CONTRACT PACKAGE IV	SCALE : AS SHOWN FULL SIZE A1	SHEET CONTENTS : BRIDGE NO.14 TALAVERA RIVER BRIDGE DETAILS OF SIDEWALK, RAILING AND DRAIN (ULTIMATE STAGE)	SHEET NO. : B14M-90
	CHECKED	10/17/09	P. DE JESUS		DEPARTMENT OF PUBLIC WORKS AND HIGHWAYS						
	SUBMITTED	10/21/09	M. B. B. B.		BUREAU OF DESIGN						
				OFFICE OF THE SECRETARY							
				Submitted By:	Reviewed By:	Recommended By:	Approved By:				
				DANILO C. TRAJANO Project Director	ADRIANO M. DORCOY Chief, Bridges Division	GILBERTO S. REYES Director IV (GIC)	MANUEL M. BONDAN Undersecretary				
							(See cover sheet for Signatures/Approvals) SIMEON A. DATUMANDANG Secretary				

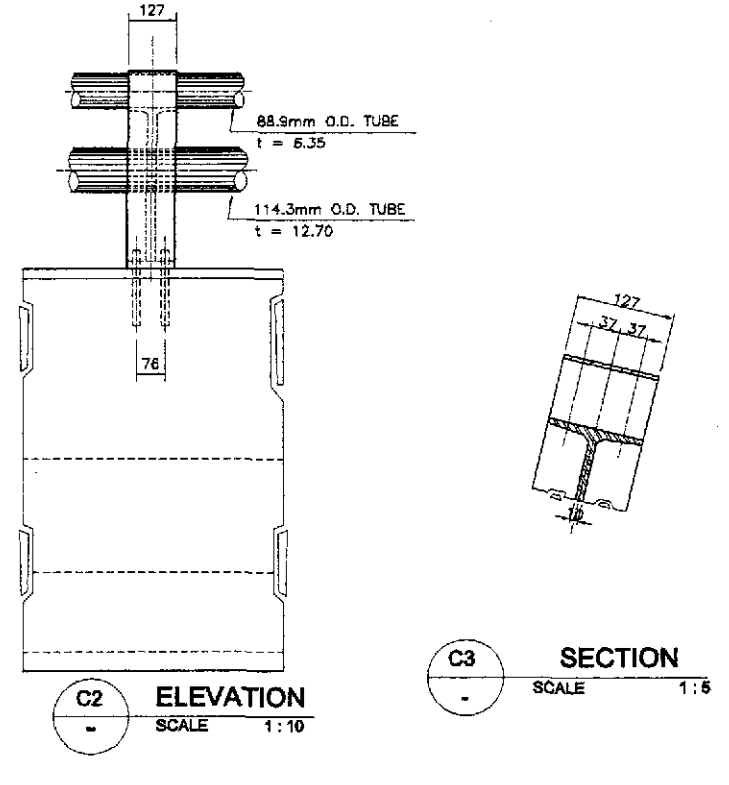


A1 SIDEWALK (TRAFFIC) SCALE 1:20
A2 SIDEWALK (PEDESTRIAN) SCALE 1:20

A SIDEWALK REINFORCEMENT DETAILS SCALE AS SHOWN

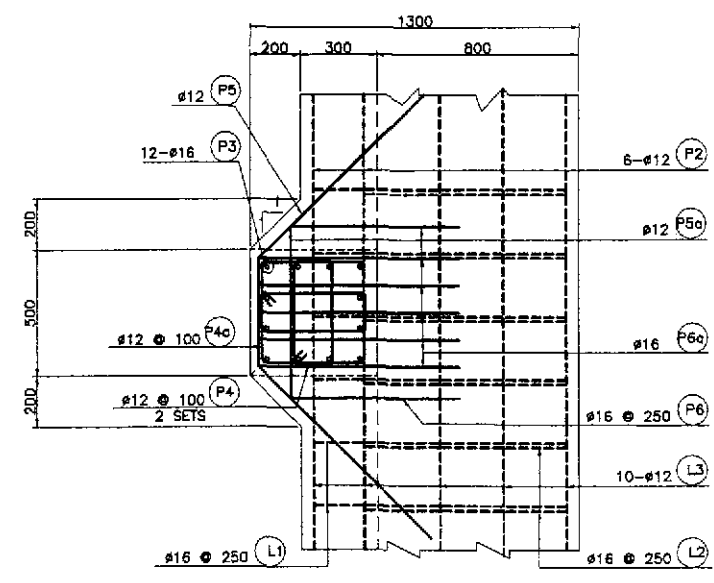


C1 SECTION SCALE 1:10

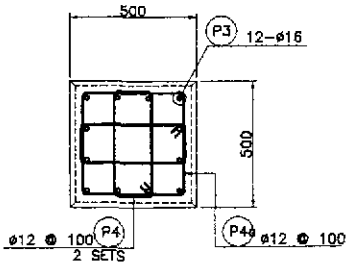


C2 ELEVATION SCALE 1:10
C3 SECTION SCALE 1:5

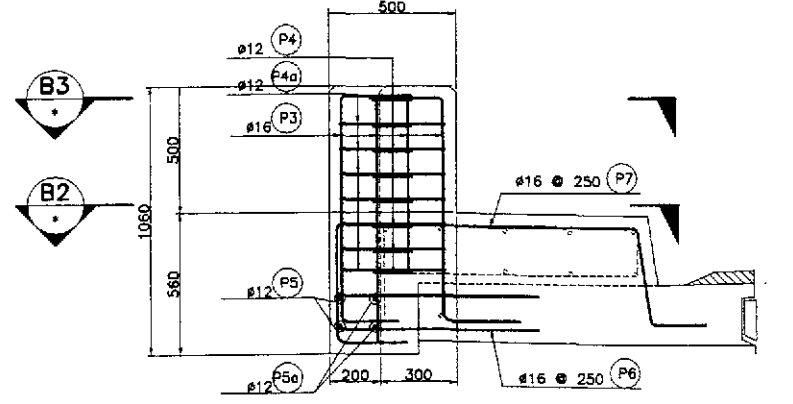
C DETAILED DIMENSION OF RAILING SCALE AS SHOWN



B2 SECTION SCALE 1:15

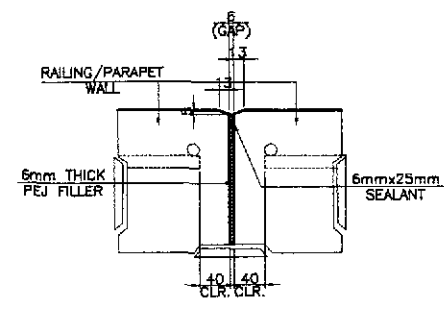


B3 SECTION SCALE 1:15

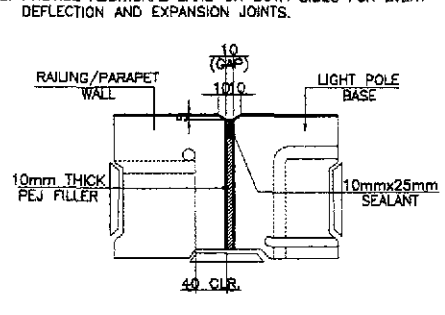


B1 ELEVATION SCALE 1:15

B LIGHT POLE BASE REINF. DETAIL SCALE AS SHOWN



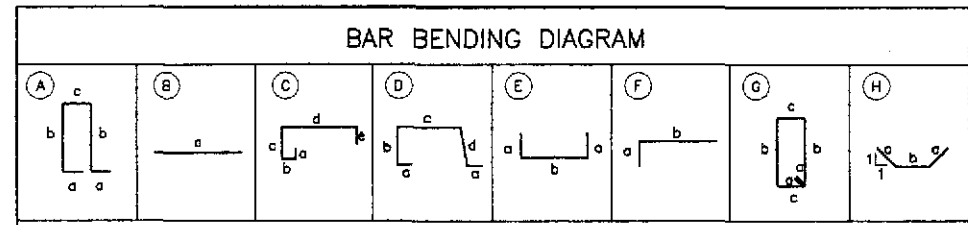
D DETAILS @ WALL JOINT



D DETAILS @ LIGHT POLE BASE / WALL JOINT

D DETAILS OF DEFLECTION JOINTS SCALE 1:5

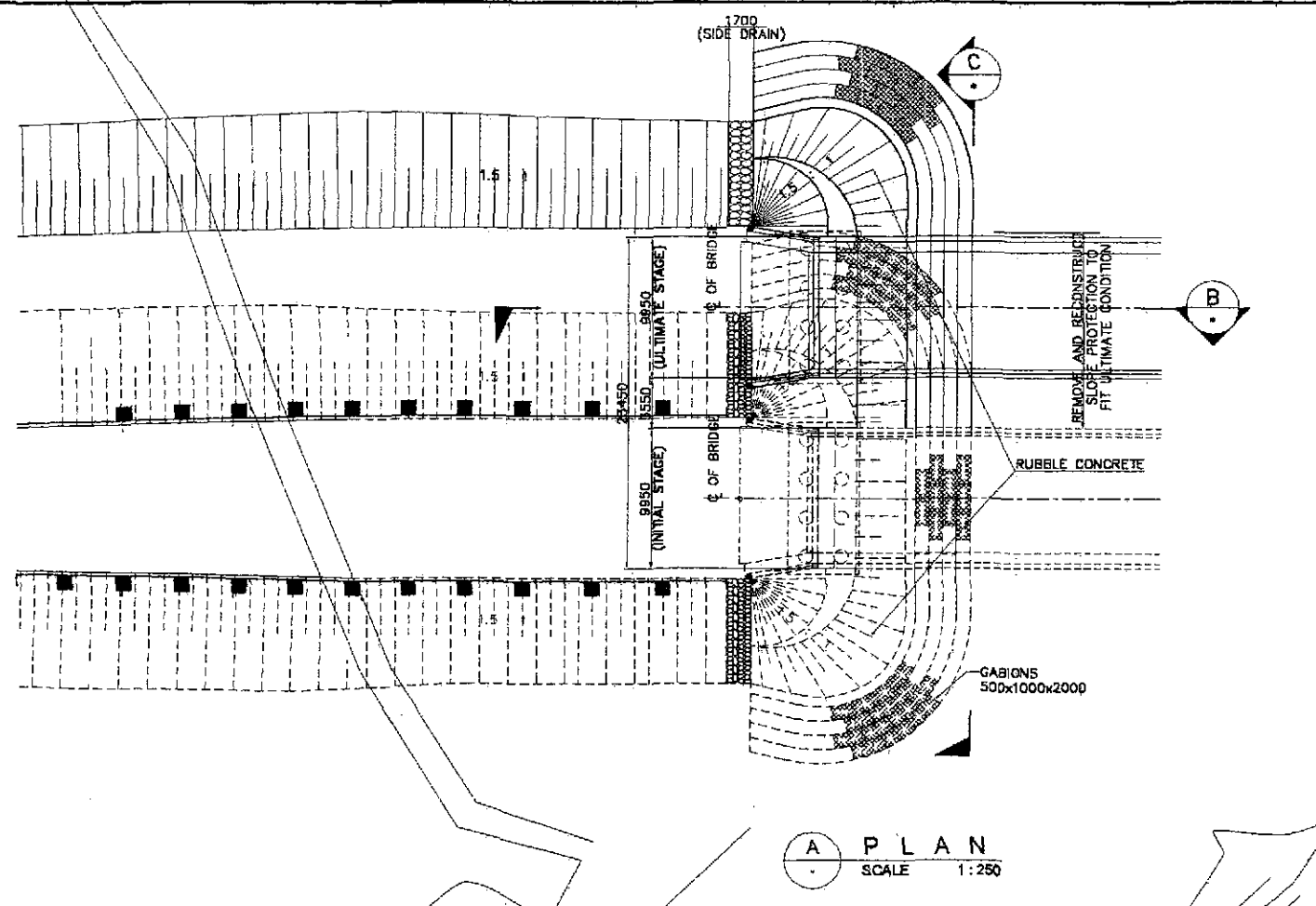
1 SIDEWALK & LIGHT POLE BASE REINF. DETAILS, RAILING DIMENSIONS SCALE AS SHOWN



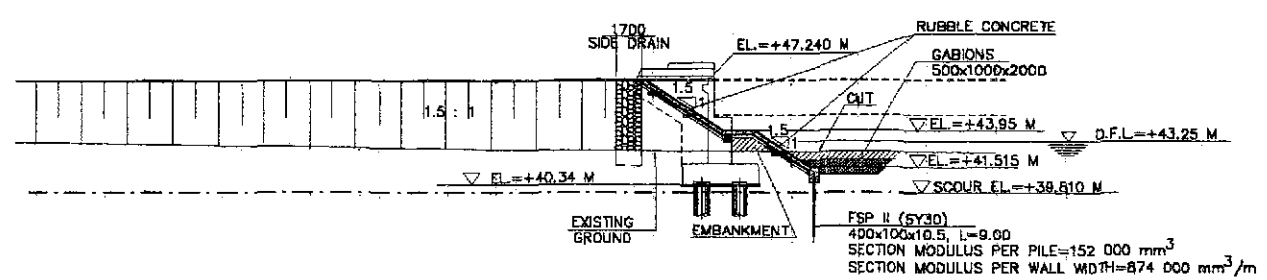
SCHEDULE OF REINFORCEMENT													
LOCATION	BAR MARK	SIZE (mm)	BEND TYPE	DIMENSION (mm) OUT TO OUT					LENGTH (mm)	NO. REQ'D.	UNIT WEIGHT (kg/m)	WEIGHT (kgs.)	
				a	b	c	d	e				Grade 40	Grade 60
PARAPET	P1	16	A	300	720	220			2260	384	1.578	1369	
	P2	12	B	9874					9874	48	0.888	421	
TOTAL WEIGHT PER SPAN = 1790 Kgs.													
TOTAL WEIGHT FOR 9 SPANS = 16110 Kgs.													
SIDEWALK PEDESTRIAN	L1	16	C	100	70	450	980	260	1860	192	1.578	564	
	L2	12	D	200	375	700	375		1850	192	0.888	315	
	L3	12	B	9874					9874	44	0.888	386	
	L4	12	E	200	980				1380	192	0.888	235	
	L5	12	F	200	400				600	192	0.888	102	
TOTAL WEIGHT PER SPAN = 1602 Kgs.													
TOTAL WEIGHT FOR 9 SPANS = 14418 Kgs.													
SIDEWALK TRAFFIC	L1	16	C	100	70	4750	480	260	5660	192	1.578	1715	
	L2	12	D	200	375	200	375		1350	192	0.888	230	
	L3	12	B	9874					9874	28	0.888	245	
	L4	12	E	220	480				880	192	0.888	150	
	L5	12	F	200	400				600	192	0.888	102	
TOTAL WEIGHT PER SPAN = 2443 Kgs.													
TOTAL WEIGHT FOR 9 SPANS = 21987 Kgs.													
LIGHT POST	P3	16	F	300	910				1210	12	1.578	23	
	P4	12	G	150	150	420			1440	16	0.888	20	
	P4a	12	G	150	420	420			1980	8	0.888	14	
	P5	12	H	1000	500				2500	2	0.888	4	
	P5a	12	B	700					700	2	0.888	1	
	P6	16	E	650	130				1430	5	1.578	11	
	P6a	16	E	750	130				1630	5	1.578	13	
P7	12	C	100	250	4750	1160	260	6520	3	0.888	17		
TOTAL WEIGHT PER POST = 103 Kgs.													
TOTAL WEIGHT FOR 12 POSTS = 1236 Kgs.													

THE REINFORCEMENT SHOWN ON THIS TABLE IS FOR REFERENCE ONLY. THE CONTRACTOR SHOULD CHECK AND VERIFY ALL DIMENSIONS, SIZES AND QUANTITIES OF REINFORCEMENT.

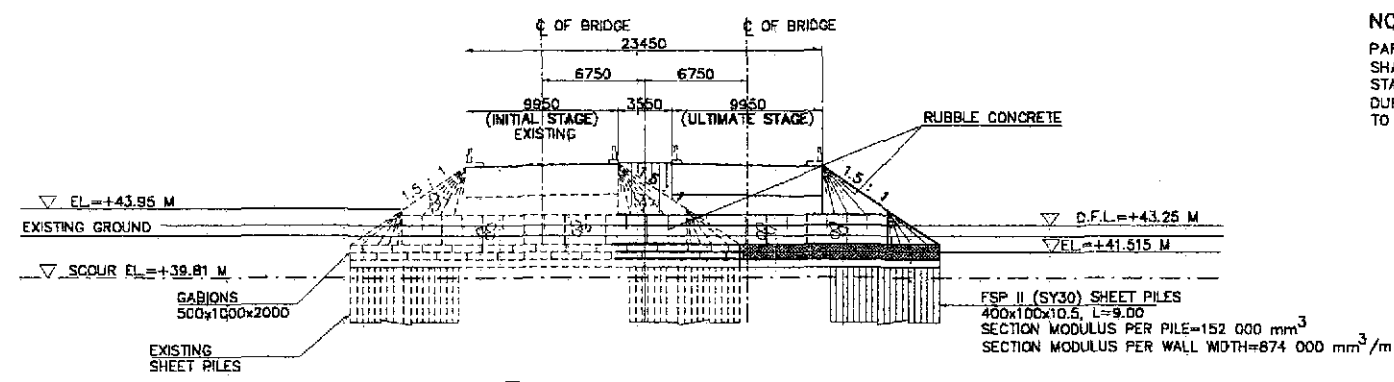
	DESIGNED	10/17/07	F. P. DE JESUS		REPUBLIC OF THE PHILIPPINES DEPARTMENT OF PUBLIC WORKS AND HIGHWAYS				PROJECT AND LOCATION :	SCALE :	SHEET CONTENTS :	SHEET NO. :
	CHECKED	10/19/07	C. SANTOS		BUREAU OF DESIGN	OFFICE OF THE SECRETARY				THE DETAILED DESIGN STUDY ON UPGRADING INTER-URBAN HIGHWAY SYSTEM ALONG THE PAN-PHILIPPINE HIGHWAY (Iligan, Cabanatuan and San Jose Bypasses)	AS SHOWN	BRIDGE NO.14 TALAVERA RIVER BRIDGE SIDEWALK & LIGHT POLE BASE REINF. DETAILS, RAILING DIMENSIONS (ULTIMATE STAGE)
SUBMITTED	10/31/07	M. R. R. R.	TEAM LEADER	Submitted By:	Reviewed By:	Recommended By:	Approved By:	CABANATUAN BYPASS - CONTRACT PACKAGE IV	FULL SIZE A1			
				DANILO C. TRAJANO Project Director	ADRIANO M. DOROS Chief, Bridge Division	GILBERTO S. REYES Director IV (GIC)	MANUEL M. BONGAN Undersecretary					



A PLAN
SCALE 1:250



B SECTION
SCALE 1:250



C ELEVATION
SCALE 1:250

1 DETAILS OF ABUTMENT SLOPE PROTECTION (ABUT. A1)
SCALE AS SHOWN

NOTES :
PART OF THE EXISTING SLOPE PROTECTION FOR THE INITIAL STAGE SHALL BE REMOVED AND RECONSTRUCTED TO MATCH THE ULTIMATE STAGE SLOPE PROTECTION. ANY DAMAGES TO THE EXISTING STRUCTURES DURING THE EXECUTION OF THIS WORK SHALL BE REPAIRED/BROUGHT BACK TO ITS ORIGINAL CONDITION AT THE EXPENSE OF THE CONTRACTOR.

JICA
JAPAN INTERNATIONAL COOPERATION AGENCY

KATAHIRA & ENGINEERS
INTERNATIONAL

yeo YACHYO ENGINEERING CO., LTD.

	DATE	SIGNATURE
DESIGNED	10/17/02	P. DE JESUS
CHECKED	10/19/02	C. SANDOZ
SUBMITTED	10/21/02	Team Leader

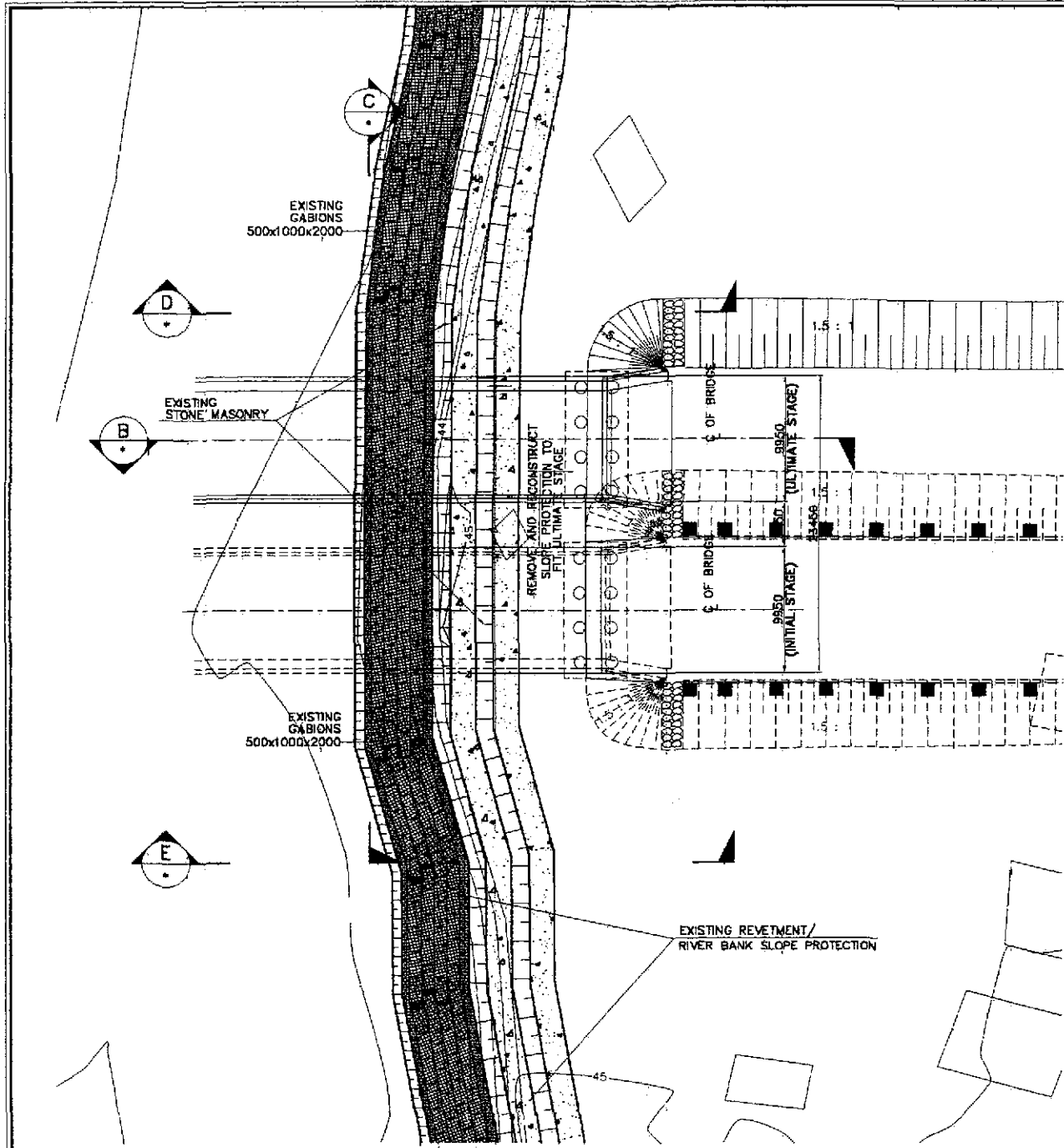
BUREAU OF DESIGN		OFFICE OF THE SECRETARY	
Submitted by:	Reviewed by:	Recommended by:	Approved by:
DANILO C. TRAJANO Project Director	PERFECTO L. ZAPLAN JR. Chief, Hydraulics Division (CH)	GILBERTO S. REYES Director IV (DC)	MANUEL M. BONGAON Undersecretary

PROJECT AND LOCATION:
THE DETAILED DESIGN STUDY ON
UPGRADING INTER-URBAN HIGHWAY SYSTEM
ALONG THE PAN-PHILIPPINE HIGHWAY
(Paritid, Cabanatuan and San Jose Bypasses)
CABANATUAN BYPASS - CONTRACT PACKAGE IV

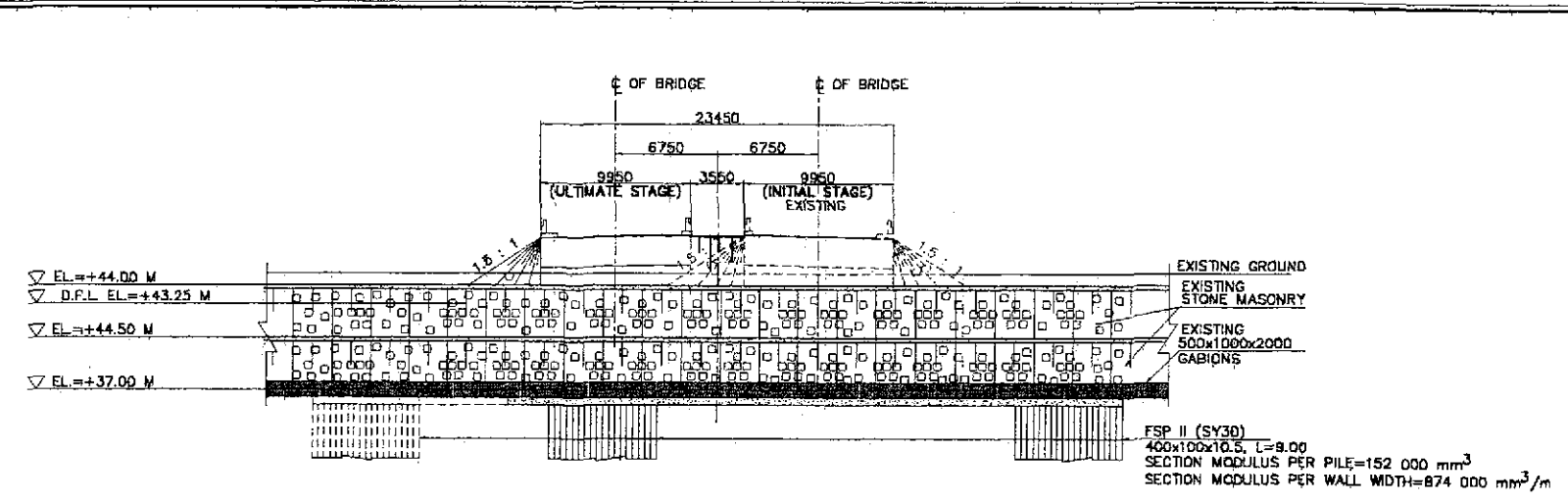
SCALE:
AS SHOWN
FULL SIZE A1

SHEET CONTENTS:
BRIDGE NO.14 TALAVERA RIVER BRIDGE
DETAILS OF ABUT. SLOPE PROTECTION
(ABUT. A1) - 1 OF 3
(ULTIMATE STAGE)

SHEET NO.:
B14M-92

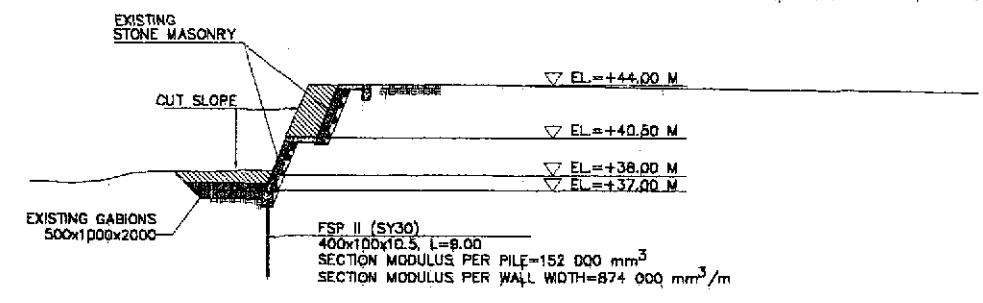


A PLAN
SCALE 1:250

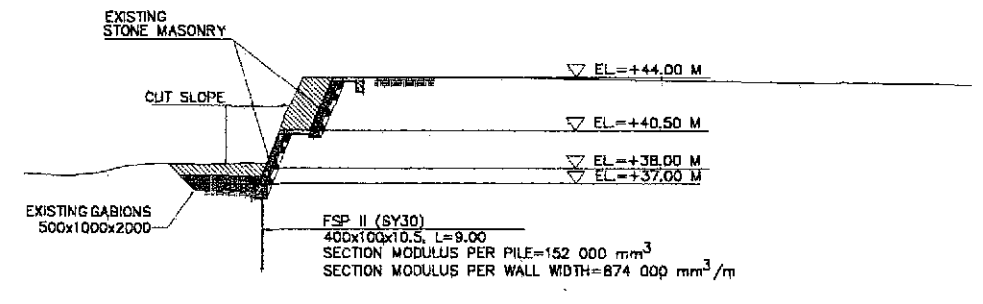


C ELEVATION
SCALE 1:250

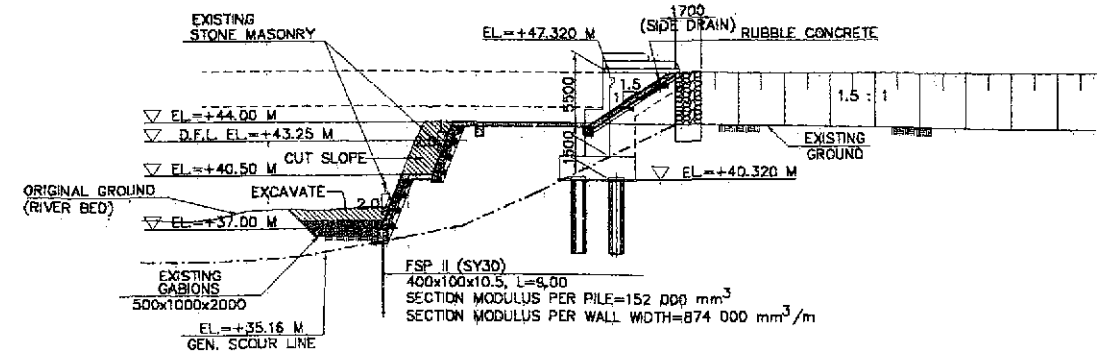
NOTES :
PART OF THE EXISTING SLOPE PROTECTION FOR THE INITIAL STAGE SHALL BE REMOVED AND RECONSTRUCTED TO MATCH THE ULTIMATE STAGE SLOPE PROTECTION. ANY DAMAGES TO THE EXISTING STRUCTURES DURING THE EXECUTION OF THIS WORK SHALL BE REPAIRED/BROUGHT BACK TO ITS ORIGINAL CONDITION AT THE EXPENSE OF THE CONTRACTOR.



D SECTION
SCALE 1:250



E SECTION
SCALE 1:250



B SECTION
SCALE 1:250

1 DETAILS OF ABUTMENT SLOPE PROTECTION (ABUT. A2)
SCALE AS SHOWN

JICA
JAPAN INTERNATIONAL COOPERATION AGENCY
KATAHIRA & ENGINEERS
YEO YACHYO ENGINEERING CO., LTD.

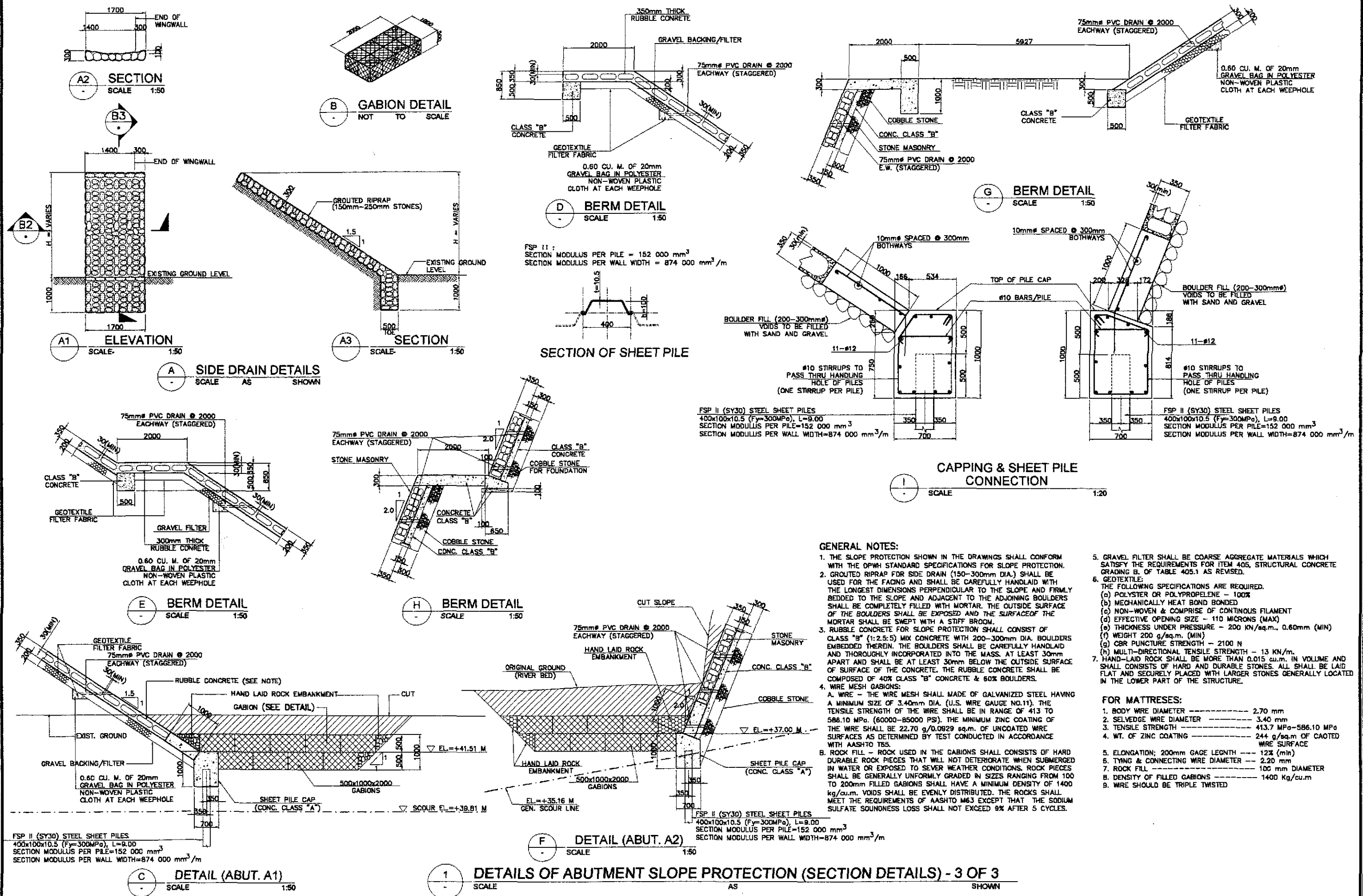
DESIGNED	DATE	SIGNATURE	REPUBLIC OF THE PHILIPPINES DEPARTMENT OF PUBLIC WORKS AND HIGHWAYS				
01/17/02		L. DE JESUS	P-I-L - PMO BUREAU OF DESIGN OFFICE OF THE SECRETARY				
CHECKED	01/19/02	D. SANTOS					
SUBMITTED	01/21/02	TEAM LEADER					
			Submitted By:	Reviewed By:	Recommended By:	Recommended By:	
			DANILO C. TRAJANO Project Director	PERFECTO L. ZAPLAN JR. Chief, Hydraulic Division (OC)	GILBERTO S. REYES Director IV (OC)	MANUEL M. BONDAN Undersecretary	Approved By: (See cover sheet for Signature/Approval) SIMEON A. DATUMANONG Secretary

PROJECT AND LOCATION :
THE DETAILED DESIGN STUDY ON
UPGRADING INTER-URBAN HIGHWAY SYSTEM
ALONG THE PAN-PHILIPPINE HIGHWAY
(Plaridel, Cabanatuan and San Jose Bypasses)
CABANATUAN BYPASS - CONTRACT PACKAGE IV

SCALE :
AS SHOWN
FULL SIZE A1

SHEET CONTENTS :
BRIDGE NO. 14 TALAVERA RIVER BRIDGE
DETAILS OF ABUT. SLOPE PROTECTION
(ABUT. A2) - 2 OF 3
(ULTIMATE STAGE)

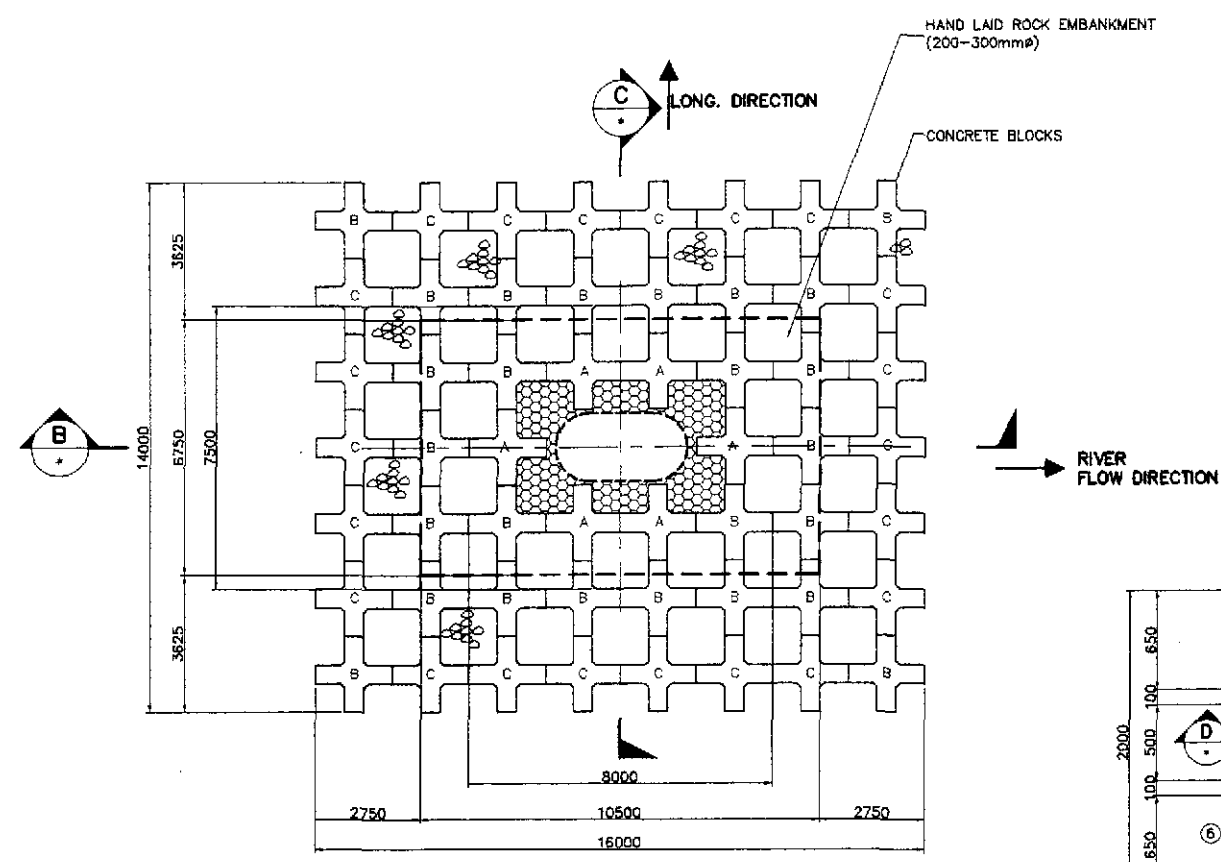
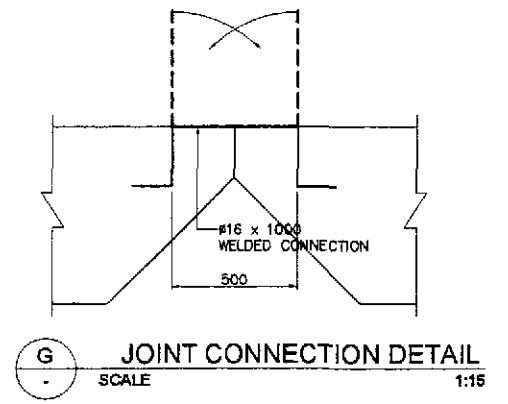
SHEET NO. :
B14M-93



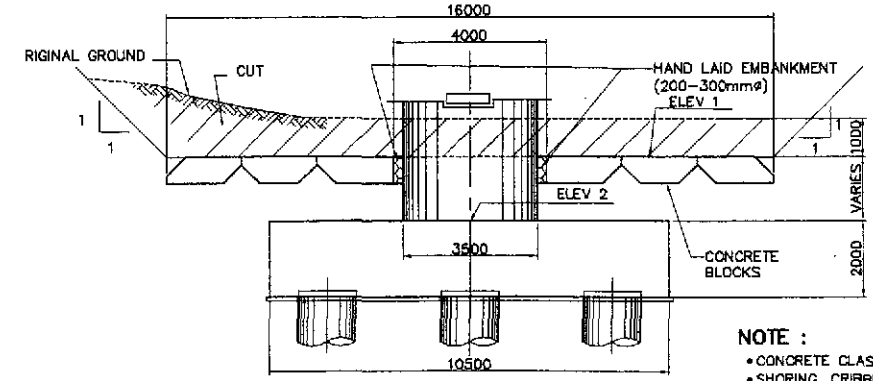
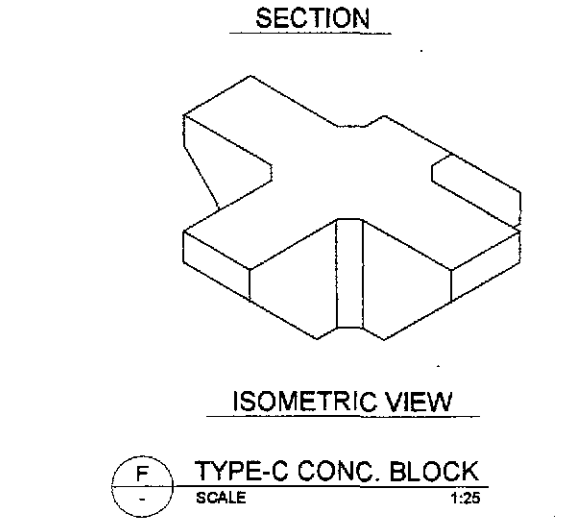
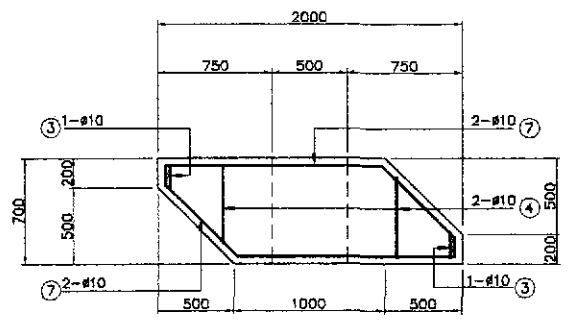
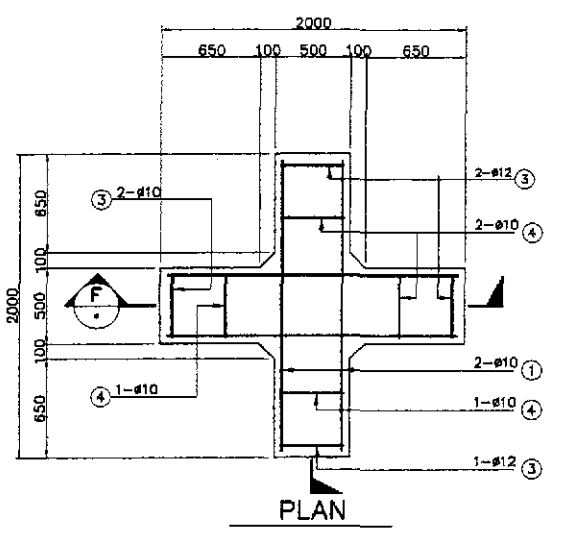
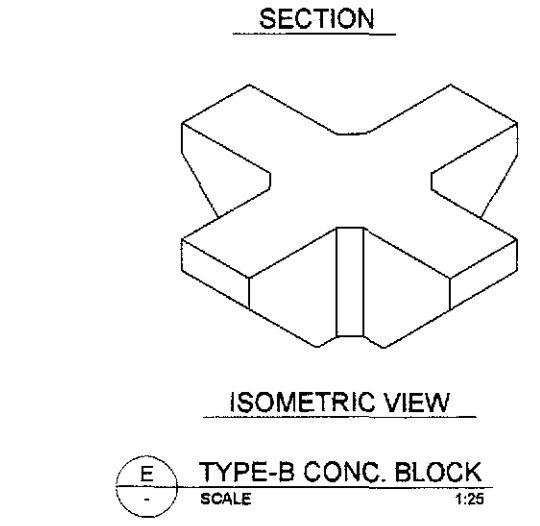
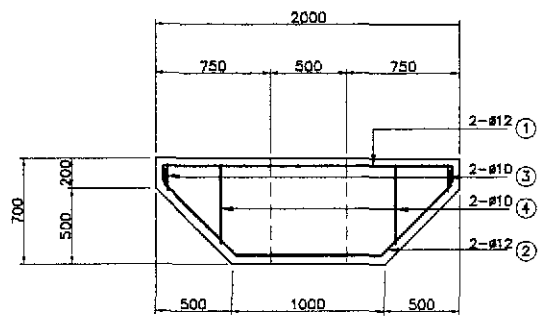
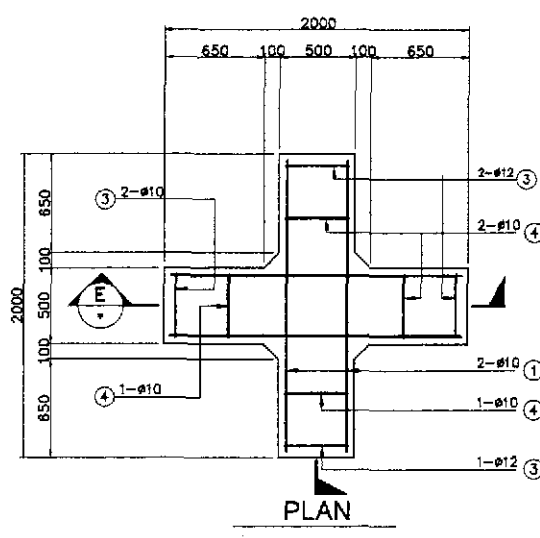
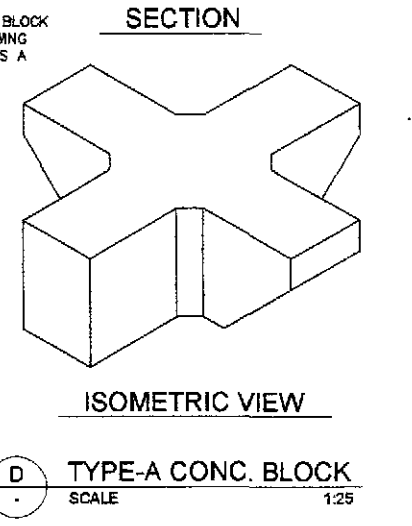
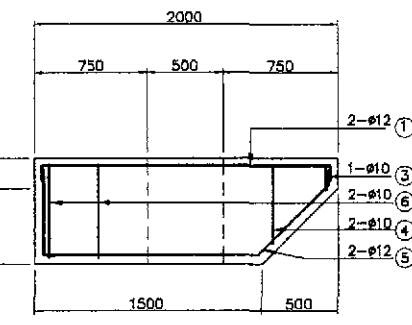
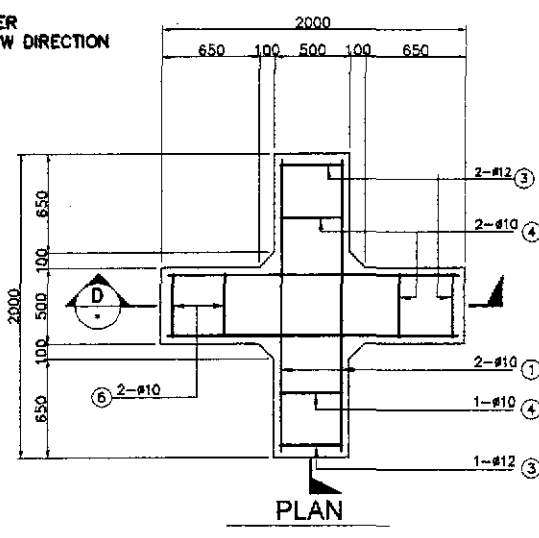
	DESIGNED	10/17/02	REPUBLIC OF THE PHILIPPINES DEPARTMENT OF PUBLIC WORKS AND HIGHWAYS		PROJECT AND LOCATION :	SCALE :	SHEET CONTENTS :	SHEET NO. :	
	CHECKED	10/19/02	BUREAU OF DESIGN OFFICE OF THE SECRETARY		THE DETAILED DESIGN STUDY ON UPGRADING INTER-URBAN HIGHWAY SYSTEM ALONG THE PAN-PHILIPPINE HIGHWAY (Plaridel, Cabanatuan and San Jose Bypasses)	AS SHOWN	BRIDGE NO. 14 TALAVERA RIVER BRIDGE DETAILS OF ABUT. SLOPE PROTECTION (SECTION DETAILS) - 3 OF 3 (ULTIMATE STAGE)	B14M-94	
SUBMITTED		10/21/02	DANLO C. TRAJANO Project Director		PERFECTO L. ZAPLAN JR. Chief, Hydraulics Division (GIC)	GILBERTO S. REYES Director IV (GIC)	MANUEL M. BONGAN Undersecretary	SIMON A. DATUMANONG Secretary	CABANATUAN BYPASS - CONTRACT PACKAGE IV FULL SIZE A1

ESTIMATE OF QUANTITIES FOR ONE PIER			
DESCRIPTION	NO. OF PCS.	QUANTITY	
		CONCRETE (cu. m.)	STEEL (kg.)
CONCRETE BLOCKS TYPE "A"	6	6.30	156
CONCRETE BLOCKS TYPE "B"	26	25.71	624
CONCRETE BLOCKS TYPE "C"	22	21.76	484
Ø 16 x 1000 CONNECTOR	-	-	40

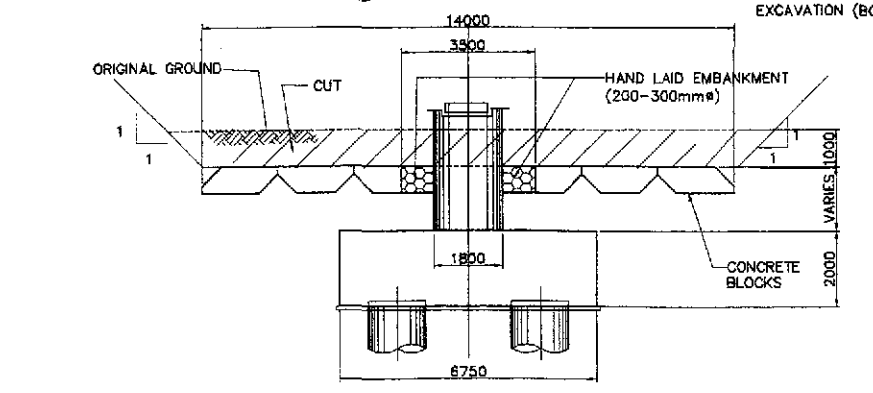
SCHEDULE OF PIER PROTECTION				
PIER NO.	ELEVATION (m)		SIZE (mm)	
	ELEV 1	ELEV 2	LONG. DIRECTION	TRANS. DIRECTION
P5	35.135	39.443	14000	16000
P6	35.115	39.024	14000	16000
P7	35.055	37.667	14000	16000
P8	34.975	36.670	14000	16000



A PLAN SHOWING CONCRETE BLOCK ARRANGEMENT
SCALE 1:100



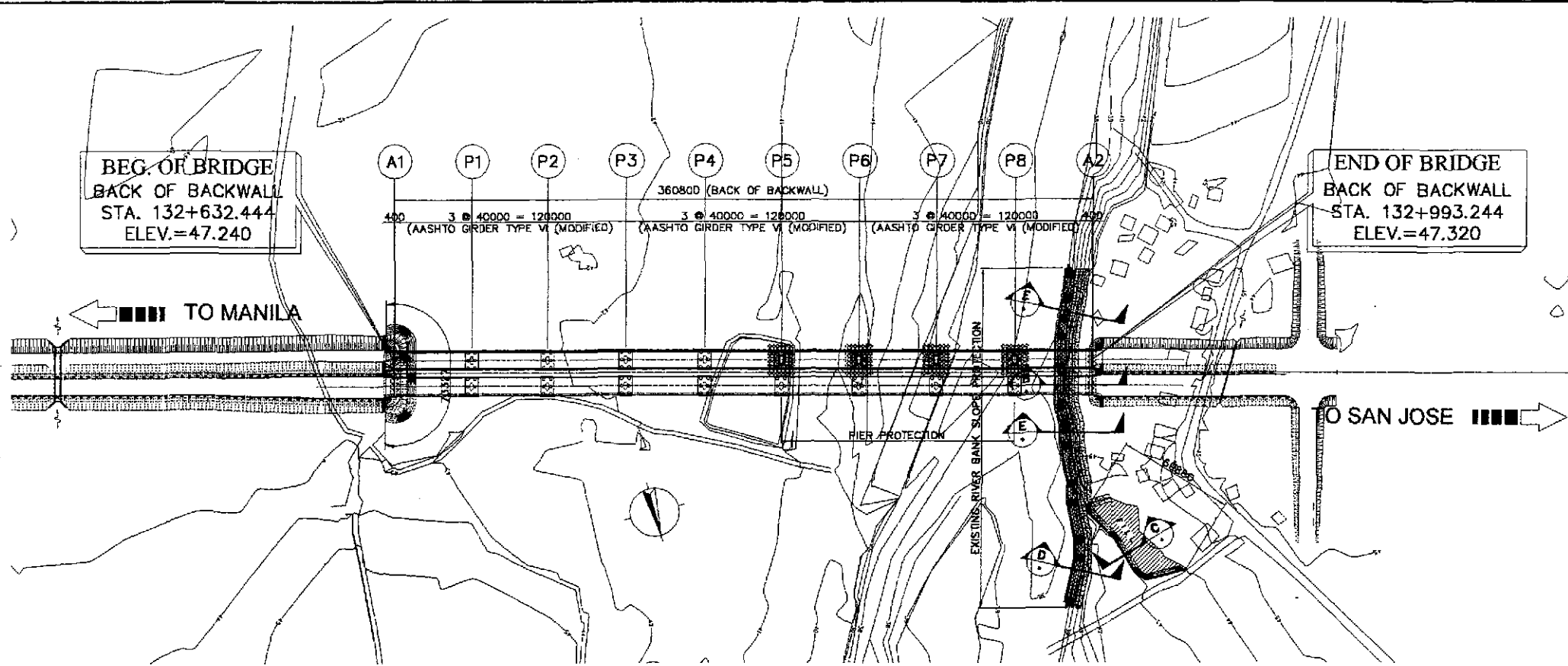
B SECTION
SCALE 1:100



C SECTION
SCALE 1:100

NOTE :
 • CONCRETE CLASS "B" FOR CONCRETE BLOCKS.
 • SHORING, CRIBBING & RELATED WORK REQUIRED FOR CONCRETE BLOCK SETTING & HAND LAID EMBANKMENT AS SPECIFIED IN THIS DRAWING WILL NOT BE PAID FOR DIRECTLY, BUT SHALL BE CONSIDERED AS A SUBSIDIARY OBLIGATION OF THE CONTRACTOR UNDER PAY ITEMS 103(2)c RIVERBED EXCAVATION (ADM.) & 103(2)c RIVERBED EXCAVATION (BOWL).

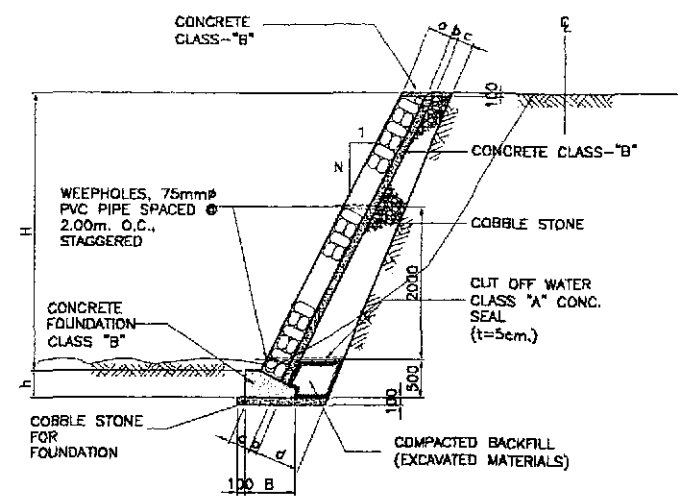
	DATE	SIGNATURE	REPUBLIC OF THE PHILIPPINES		PROJECT AND LOCATION :	SCALE :	SHEET CONTENTS :	SHEET NO. :
	DESIGNED	R. P. DE JESUS	DEPARTMENT OF PUBLIC WORKS AND HIGHWAYS		THE DETAILED DESIGN STUDY ON UPGRADING INTER-URBAN HIGHWAY SYSTEM ALONG THE PAN-PHILIPPINE HIGHWAY (Paridel, Cabanatuan and San Jose Bypasses) CABANATUAN BYPASS - CONTRACT PACKAGE IV	AS SHOWN FULL SIZE A1	BRIDGE NO.14 TALAVERA RIVER BRIDGE DETAILS OF PIER PROTECTION (PIERS P5 TO P8) (ULTIMATE STAGE)	B14M-95
	CHECKED	J. C. SANTOS	BUREAU OF DESIGN					
SUBMITTED	MANUEL M. BONGAN	DANILLO C. TRAJANO Project Director		PERFECTO L. ZAPLAN JR. Chief,Hydraulics Division (DIC)				



BEG. OF BRIDGE
BACK OF BACKWALL
STA. 132+632.444
ELEV.=47.240

END OF BRIDGE
BACK OF BACKWALL
STA. 132+993.244
ELEV.=47.320

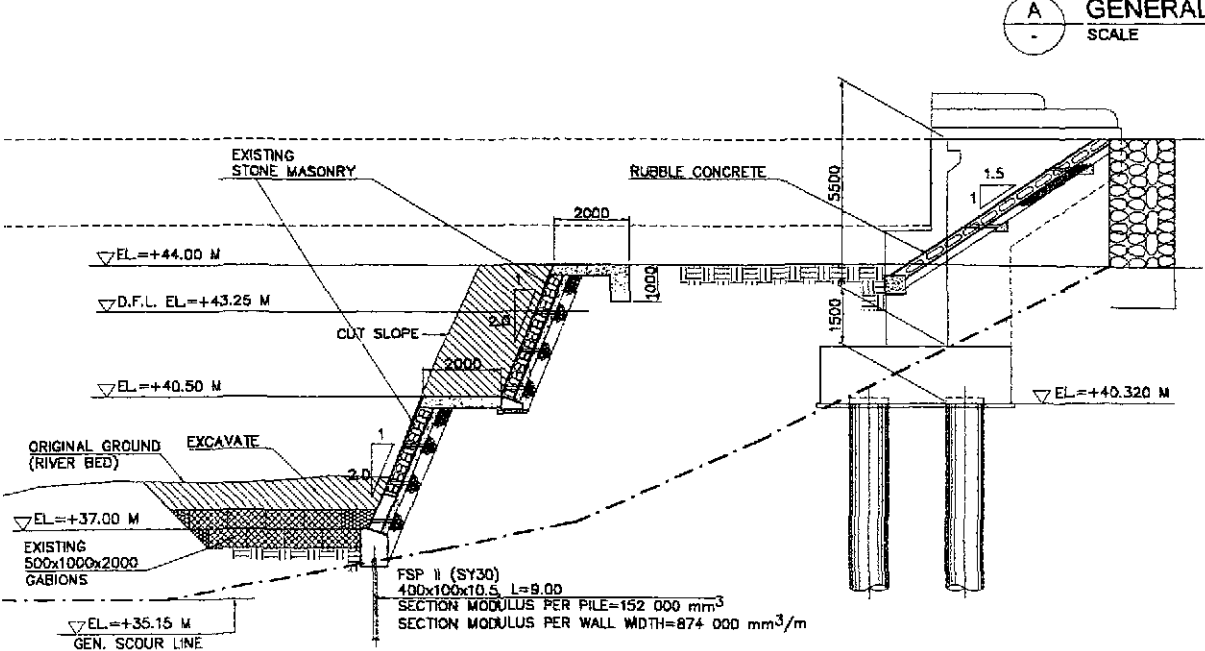
A GENERAL PLAN
SCALE 1:3000



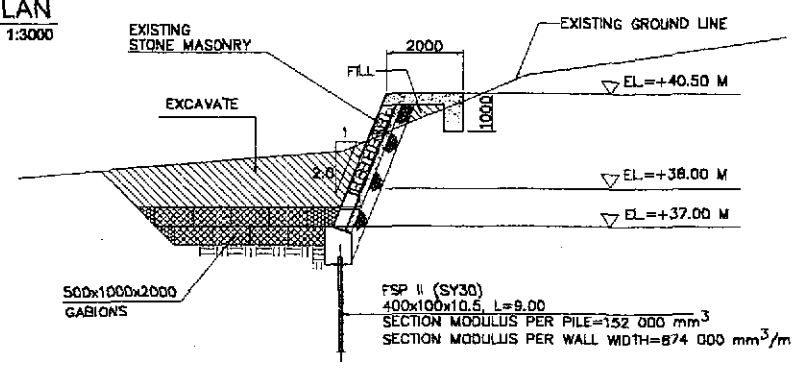
F STONE MASONRY EMBANKMENT SLOPE
SCALE 1:50

FOR EMBANKMENT SLOPE							
H	N	a	b	c	d	B	h
1000	3.30	350	100	200	300	520	300
1500	3.30	350	100	200	340	520	300
2000	2.50	350	100	200	380	520	300
2500	2.50	350	100	200	420	520	300
3000	2.50	350	100	200	460	520	300
3500	2.00	350	150	200	500	550	350
4000	2.00	350	150	200	540	550	350
4500	2.00	350	150	200	580	550	350
5000	2.00	350	150	200	620	550	350

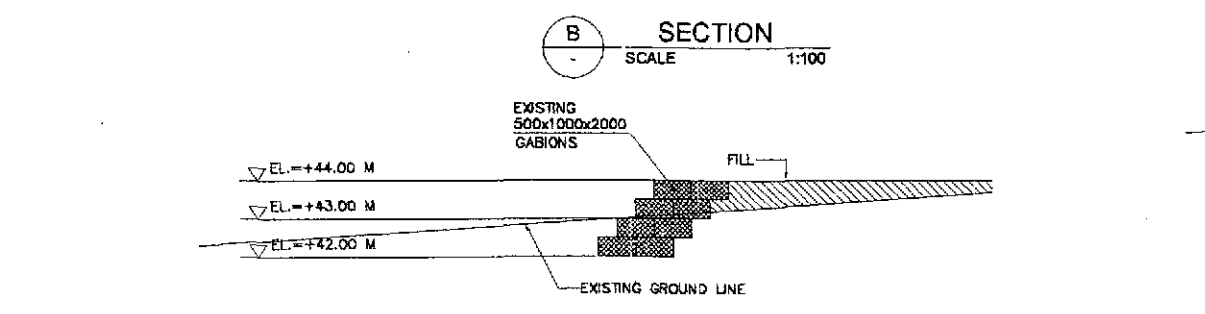
NOTE
DRAIN AND WEEP HOLES (50mm ϕ) SHALL BE PROVIDED ON STONE MASONRY EMBANKMENT AND CUT SLOPE AS SHOWN ON THE DRAWINGS.



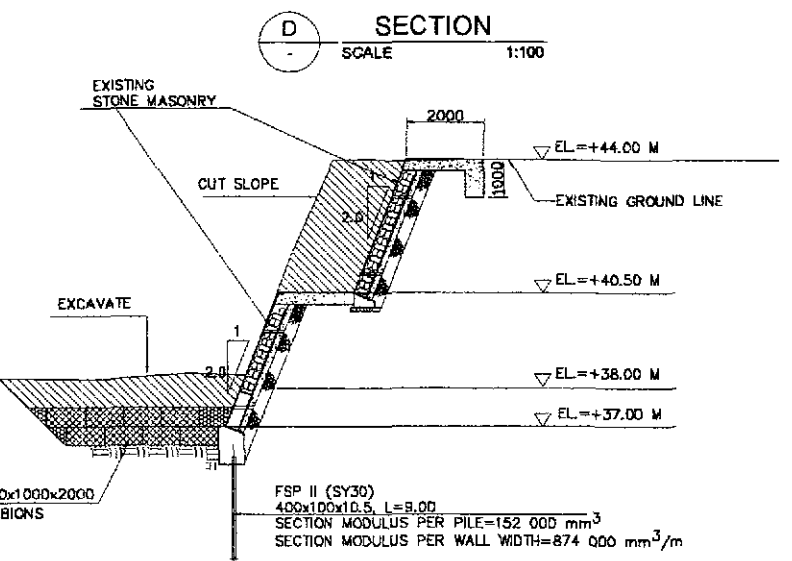
B SECTION
SCALE 1:100



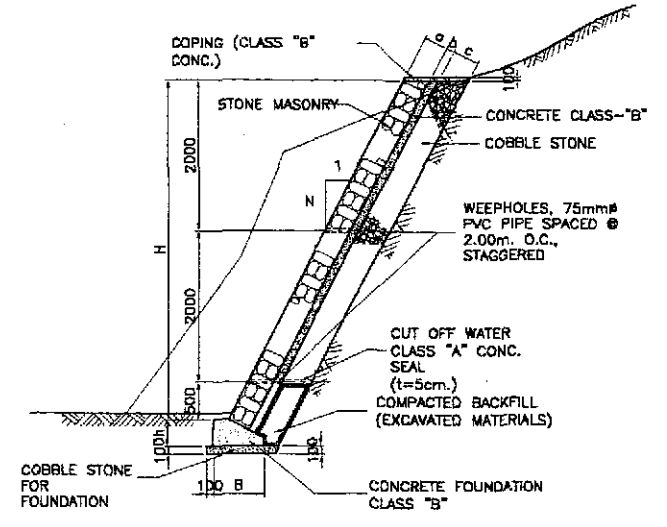
D SECTION
SCALE 1:100



C SECTION
SCALE 1:100



E SECTION
SCALE 1:100



G STONE MASONRY CUT SLOPE
SCALE 1:50

FOR CUT SLOPE							
H	N	a	b	c	B	h	
1000	3.30	250	50	300	520	300	
2000	3.30	250	100	300	520	300	
3000	2.50	250	100	300	520	300	
4000	2.50	350	150	300	550	350	
5000	2.50	350	150	300	550	350	
6000	2.00	350	200	300	550	350	
7000	2.00	350	200	300	550	350	

JICA
JAPAN INTERNATIONAL COOPERATION AGENCY
KATAHIRA & ENGINEERS INTERNATIONAL
YEO YACHIYO ENGINEERING CO., LTD.

REPUBLIC OF THE PHILIPPINES
DEPARTMENT OF PUBLIC WORKS AND HIGHWAYS
BUREAU OF DESIGN
OFFICE OF THE SECRETARY
DESIGNED: 10/17/02
CHECKED: 10/19/02
SUBMITTED: 10/21/02
DATE: 10/17/02
SIGNATURE: P. P. DE JESUS
P. P. DE JESUS
J. C. SANTOS
DANILO C. TRAJANG
PERFECTO L. ZAPLAN, JR.
GILBERTO S. REYES
MANUEL M. BONGAN
SIMEON A. DATUMANONG

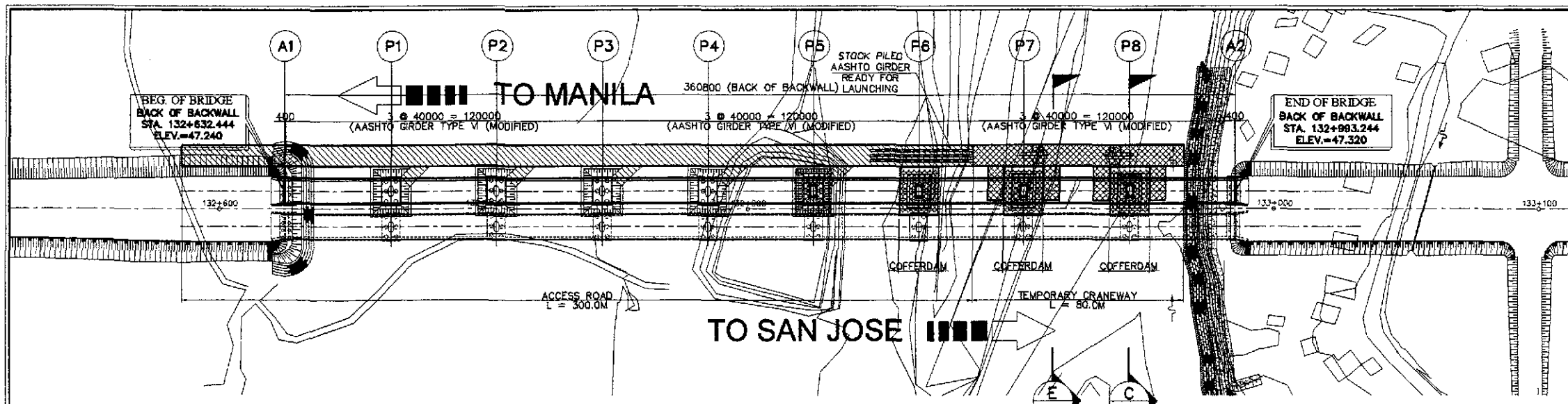
PROJECT AND LOCATION :
THE DETAILED DESIGN STUDY ON
UPGRADING INTER-URBAN HIGHWAY SYSTEM
ALONG THE PAN-PHILIPPINE HIGHWAY
(Plaridel, Cabanatuan and San Jose Bypasses)
CABANATUAN BYPASS - CONTRACT PACKAGE IV

SCALE :
AS SHOWN
FULL SIZE A1

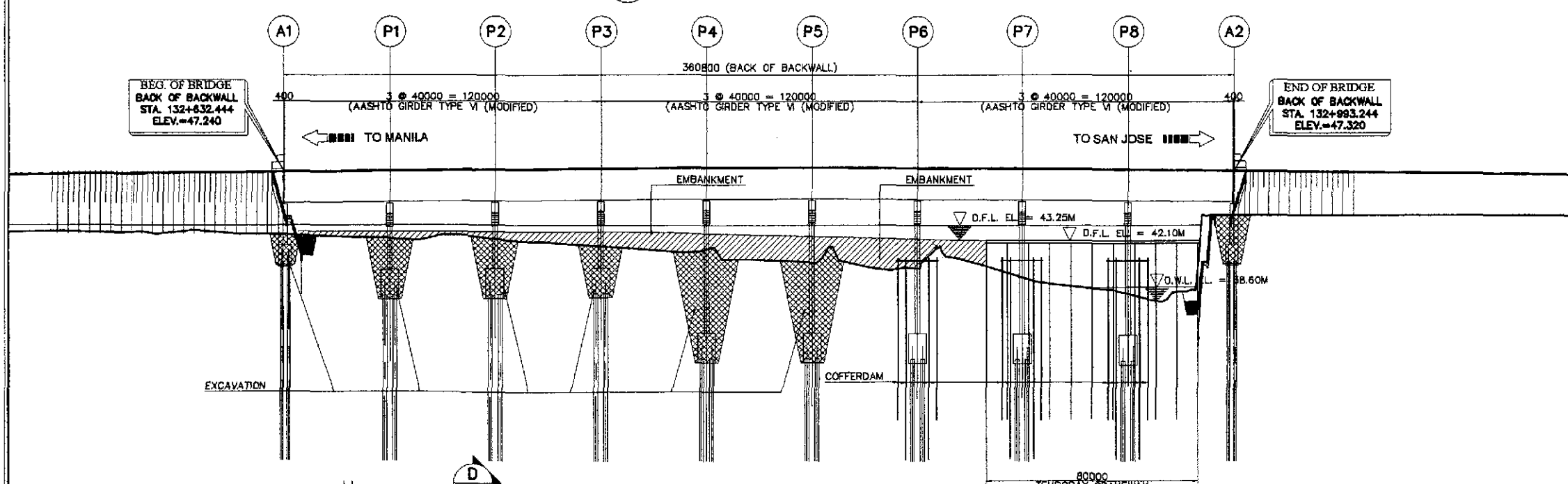
SHEET CONTENTS :
BRIDGE NO.14 TALAVERA RIVER BRIDGE
DETAILS OF RIVER SLOPE
PROTECTION
(ULTIMATE STAGE)

SHEET NO. :
B14M-96

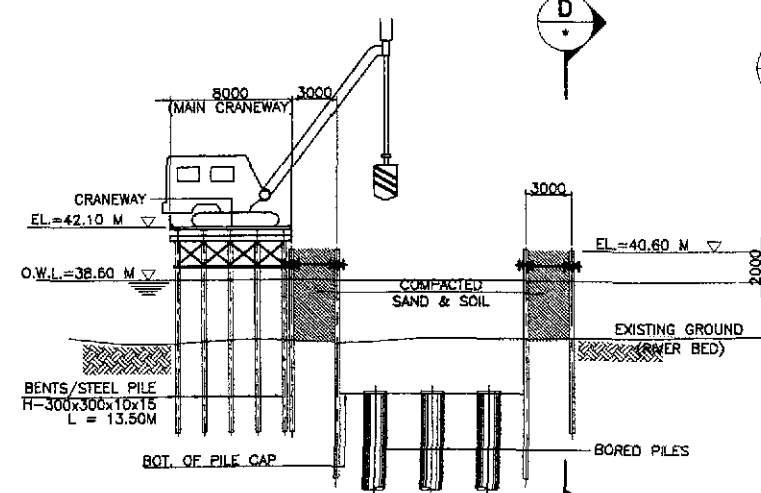
CONSTRUCTION WORKS



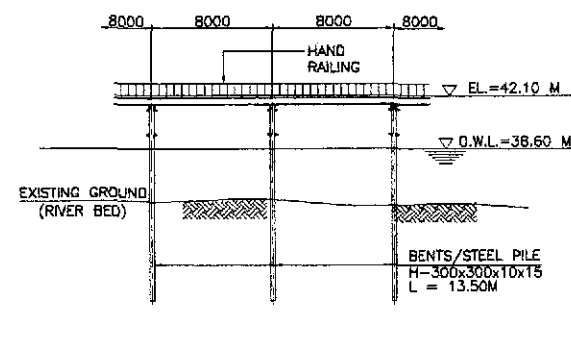
A PLAN
SCALE 1:1000



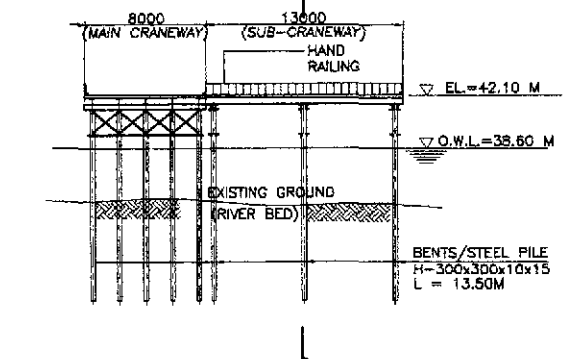
B ELEVATION
SCALE H = 1000, V = 200



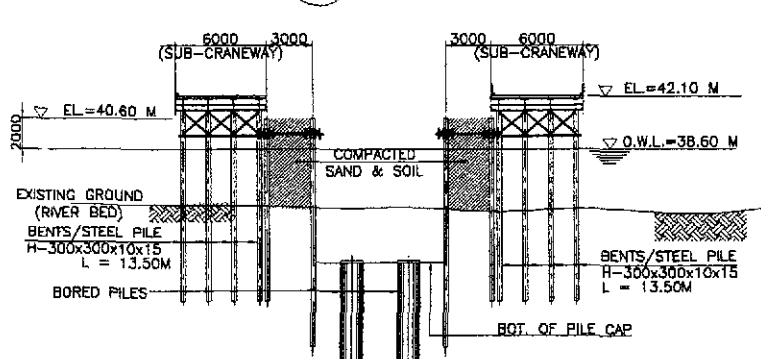
C SECTION
SCALE 1:250



D SECTION
SCALE 1:250

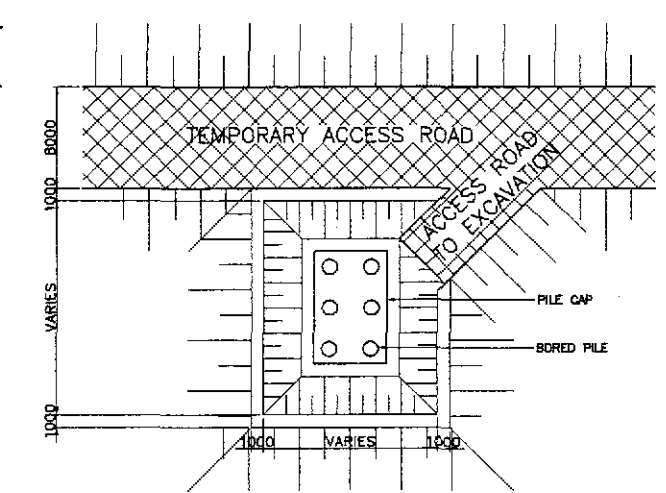
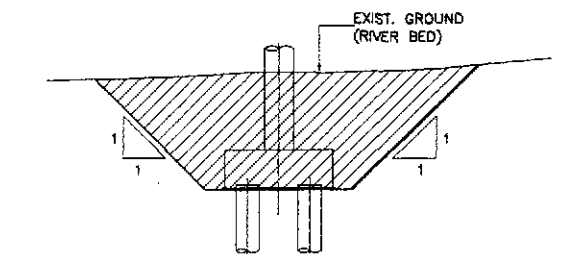
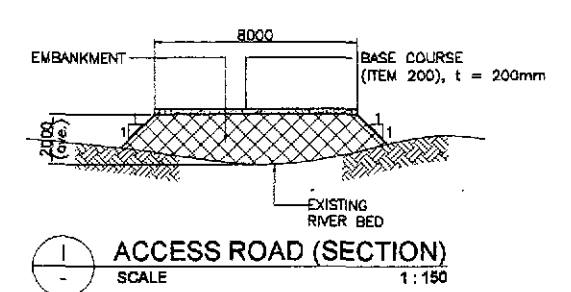


E SECTION
SCALE 1:250



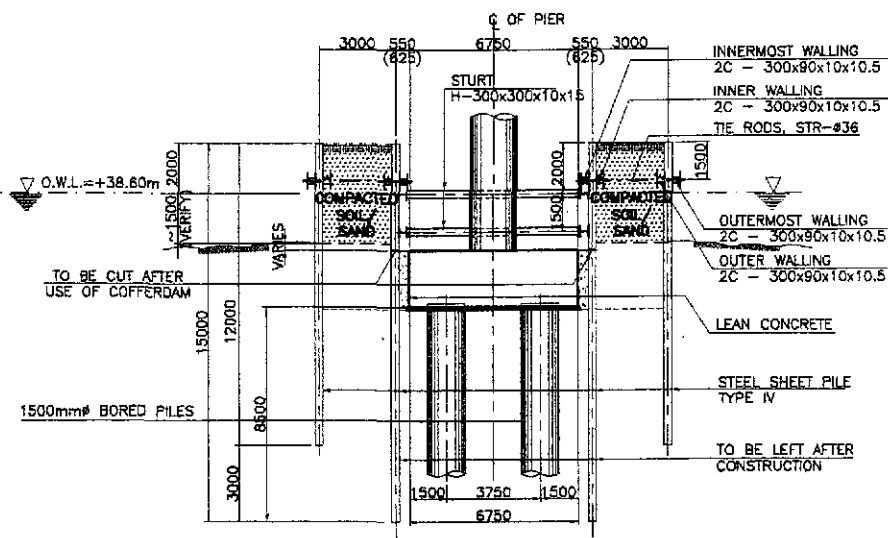
F SECTION
SCALE 1:250

SUMMARY OF QUANTITIES FOR TEMPORARY WORKS					
ITEM NO.	DESCRIPTION	UNIT	INITIAL STAGE	ULTIMATE STAGE	TOTAL
SPL B.4a	CRANEWAY/JETTY (8.0 m WIDTH)	l.m.	80	80	160
SPL B.4b	CRANEWAY/JETTY (6.0 m WIDTH)	l.m.	52	52	104
SPL B.4c	ACCESS ROAD (8.0 m WIDTH)	l.m.	300	300	600

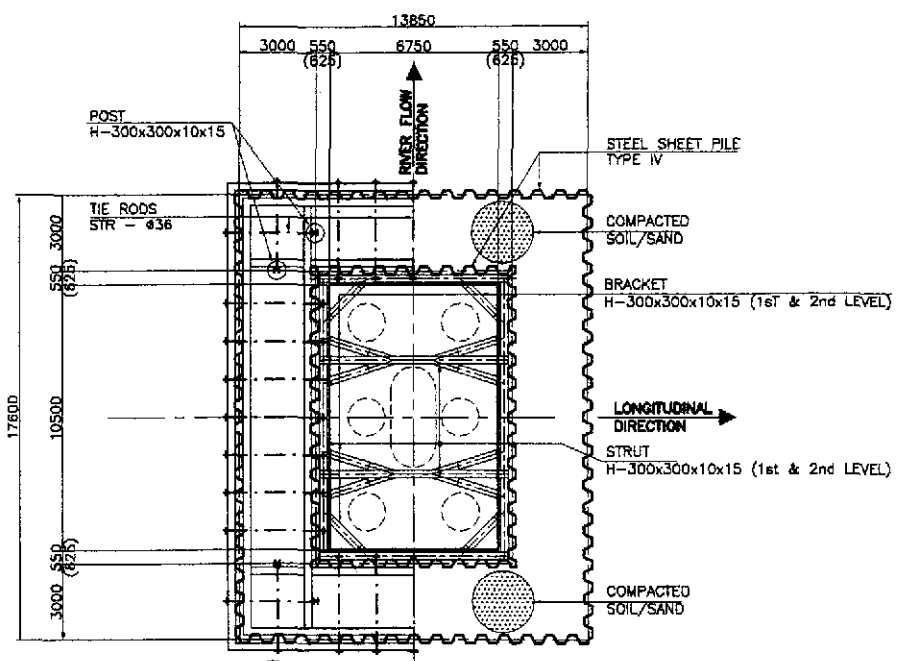


G ACCESS ROAD DETAILS (PLAN)
SCALE 1:300

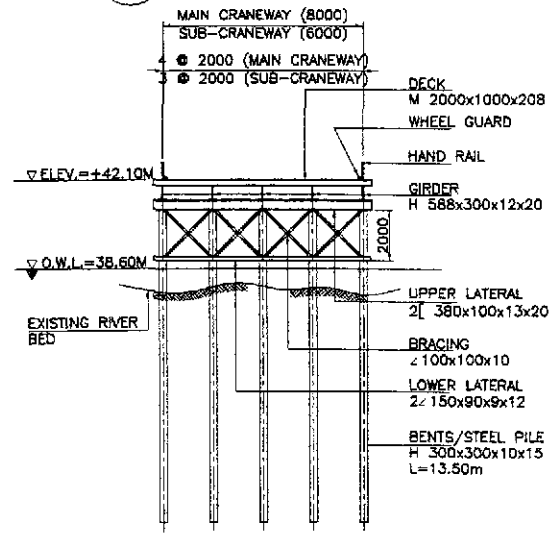
	DESIGNED	10/17/02				PROJECT AND LOCATION :	SCALE :	SHEET CONTENTS :	SHEET NO. :
	CHECKED	10/19/02	REPUBLIC OF THE PHILIPPINES DEPARTMENT OF PUBLIC WORKS AND HIGHWAYS			THE DETAILED DESIGN STUDY ON UPGRADING INTER-URBAN HIGHWAY SYSTEM ALONG THE PAN-PHILIPPINE HIGHWAY (Plaridel, Cabanatuan and San Jose Bypasses)	AS SHOWN	BRIDGE NO. 14 TALAVERA RIVER BRIDGE TEMPORARY CRANEWAY BRIDGE AND COFFERDAM LAYOUT (ULTIMATE STAGE)	B14C-101
	SUBMITTED	10/21/02	BUREAU OF DESIGN OFFICE OF THE SECRETARY			CABANATUAN BYPASS - CONTRACT PACKAGE IV	FULL SIZE A1		
DESIGNED BY: P. DE JESUS CHECKED BY: J. SANTOS SUBMITTED BY: M. BONGAN		PUHL - PMG Submitted By: DANILLO C. TRAJANO Project Director			Reviewed By: ADRIANO M. DORGY Chief, Bridges Division			Recommended By: GILBERTO S. REYES Director IV (OIC)	
					Recommended By: MANUEL M. BONGAN Undersecretary				
					Approved By: SIMEON A. DATUMANONG Secretary				



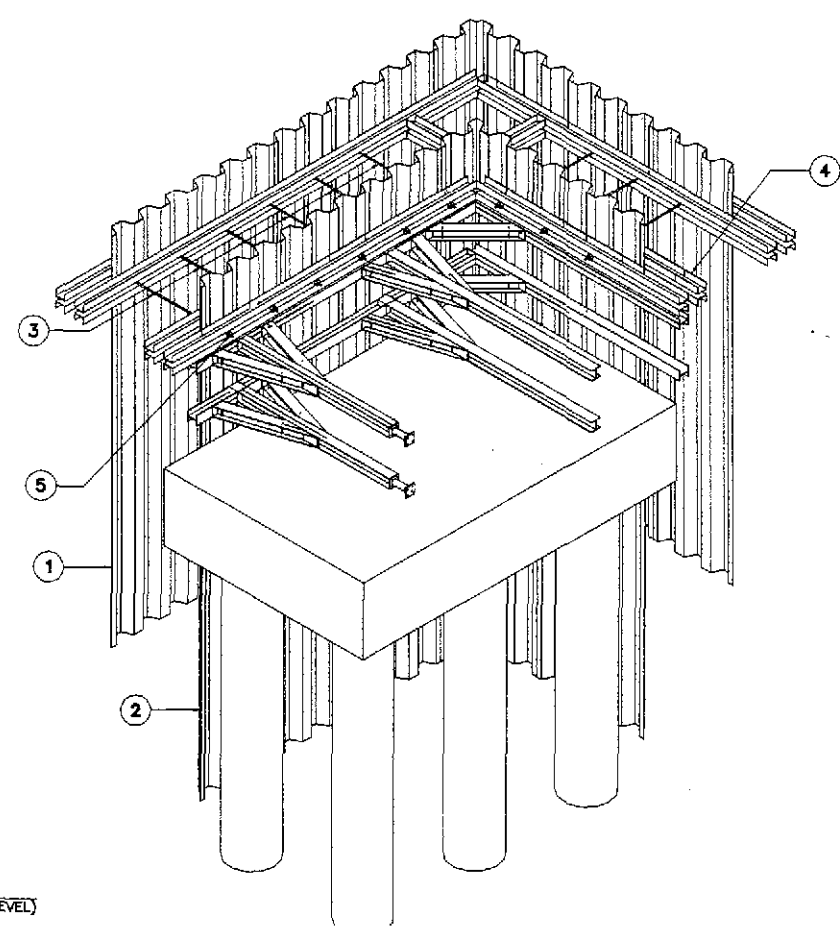
A SECTION
SCALE 1:300



B PLAN
SCALE 1:300



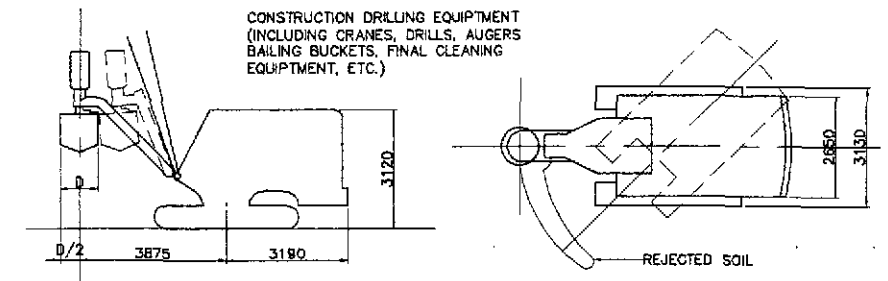
B CRANEWAY SECTION (MAIN BRIDGE)
SCALE 1:300



C ISOMETRIC VIEW
NOT TO SCALE

COFFERDAM SCHEDULE

TYPE	PILE CAP SIZE	LOCATION	QUANTITY
1	6750 x 10500	PIER 6, 7 & 8	3



SECTION PLAN

D EARTH DRILL MACHINE
NOT TO SCALE

MATERIAL LIST OF TEMPORARY COFFERDAM (PER PIER)

MATERIAL NAME	SIZE	LENGTH (m)	NO. (pos)	UNIT	UNIT WT (kg/m)	QUANTITY	REMARKS
TYPE 1 (6.75 x 10.5)							
Steel Sheet Pile (inner)	IV	15.00	98	kgs	76.10	111,867.00	
Steel Sheet Pile (outer)	IV	12.00	158	kgs	76.10	144,286.00	
Steel Strut, 1st& 2nd Level (Longitudinal)	H-300x300x10x15	6.85	8	kgs	94.00	5,152.00	
Steel Strut, 1st& 2nd Level (Transverse)	H-300x300x10x15	10.60	4	kgs	94.00	3,986.00	
Steel Waling (inner - longitudinal)	C-300x90x10x10.5	13.45	4	kgs	43.80	2,357.00	
Steel Waling (innermost - longitudinal)	C-300x90x10x10.5	7.45	4	kgs	43.80	1,306.00	
Steel Waling (inner - transverse)	C-300x90x10x10.5	17.20	4	kgs	43.80	3,014.00	
Steel Waling (innermost - transverse)	C-300x90x10x10.5	11.20	4	kgs	43.80	1,963.00	
Steel Waling (outer-longitudinal)	C-300x90x10x10.5	13.45	4	kgs	43.80	2,357.00	
Steel Waling (outermost-longitudinal)	C-300x90x10x10.5	14.25	4	kgs	43.80	2,497.00	
Steel Waling (outer - transverse)	C-300x90x10x10.5	17.20	4	kgs	43.80	3,014.00	
Steel Waling (outermost - transverse)	C-300x90x10x10.5	18.00	4	kgs	43.80	3,154.00	
Steel Post	H-300x300x10x15	15.00	8	kgs	94.00	11,280.00	
Steel Bracket, 1st&2nd Level	H-300x300x10x15	2.00	24	kgs	94.00	4,512.00	
Tie Rods	STR - Ø36	3.50	32	kgs	7.99	895.00	
Sand/Soil	Borrow Materials			m ³		534.45	Selected Materials

MATERIAL LIST OF TEMPORARY CRANEWAY

A) MAIN CRANEWAY, L = 80 000 mm							
Steel Pile (Bents)	H-300 x 300 x 10 x 15	13.50	55	kgs	94.00	69,795.00	
Lower Lateral	L-150 x 90 x 9 x 12	9.30	22	kgs	16.40	3,356.00	
Upper Lateral	C-380 x 100 x 13 x 20	9.30	22	kgs	67.30	13,770.00	
Bracing	L-100 x 100 x 10	2.90	88	kgs	14.90	3,803.00	
Girder	H-588 x 300 x 12 x 20	8.00	50	kgs	147.00	58,800.00	
Deck Plate	2000 x 1000 x 208			m ²		640.00	
Hand Railing				m		160.00	
Wheel Guard				m		160.00	
B) SUB-CRANEWAY							
Steel Pile (Bents)	H-300 x 300 x 10 x 15	13.50	48	kgs	94.00	60,812.00	
Lower Lateral	L-150 x 90 x 9 x 12	7.30	24	kgs	16.40	2,874.00	
Upper Lateral	C-380 x 100 x 13 x 20	7.30	24	kgs	67.30	11,791.00	
Bracing	L-100 x 100 x 10	2.90	24	kgs	14.90	1,038.00	
Girder	H-588 x 300 x 12 x 20	13.00	16	kgs	147.00	30,576.00	
Deck Plate	2000 x 1000 x 208			m ²		312.00	
Hand Railing				m		104.00	
Wheel Guard				m		104.00	

MATERIAL LIST OF ACCESS ROAD

Base Course, t = 200 mm	300.00	m ³	492.00
Embankment	300.00	m ³	6,750.00

JICA
JAPAN INTERNATIONAL COOPERATION AGENCY

KATAHIRA & ENGINEERS
INTERNATIONAL

YEO
YACHIYO ENGINEERING CO., LTD.

DESIGNED: 10/17/02 F.P. DE JESUS
CHECKED: 10/19/02 J.C. SANCHEZ
SUBMITTED: 10/21/02 M. BARRERA

REPUBLIC OF THE PHILIPPINES
DEPARTMENT OF PUBLIC WORKS AND HIGHWAYS

BUREAU OF DESIGN
OFFICE OF THE SECRETARY

Submitted By: DANLO C. TRAJANO, Project Director
Recommended By: ADRIANO M. DORCY, Chief, Bridge Division
Recommended By: GILBERTO S. REYES, Director IV (D/C)
Approved By: MANUEL M. BONDAN, Undersecretary
Approved By: SIMEON A. DATUMANONG, Secretary

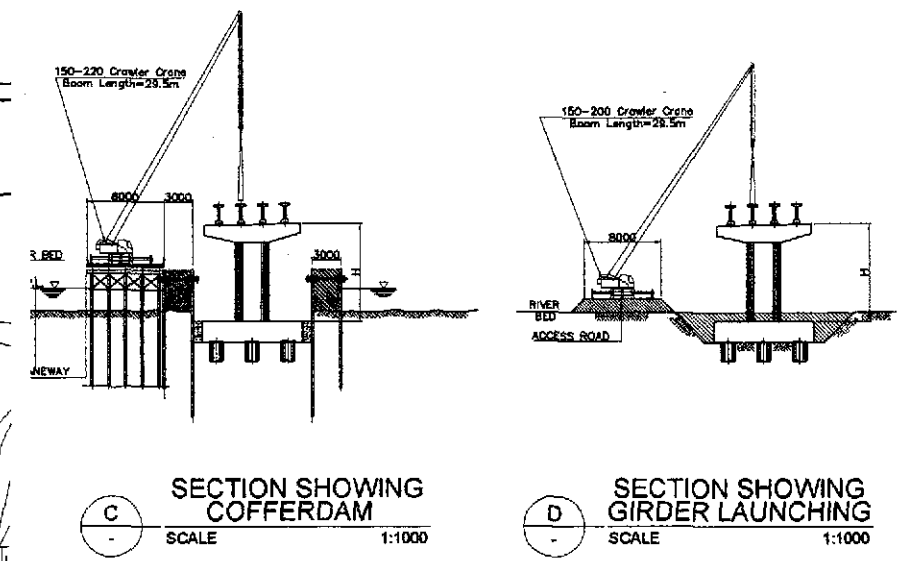
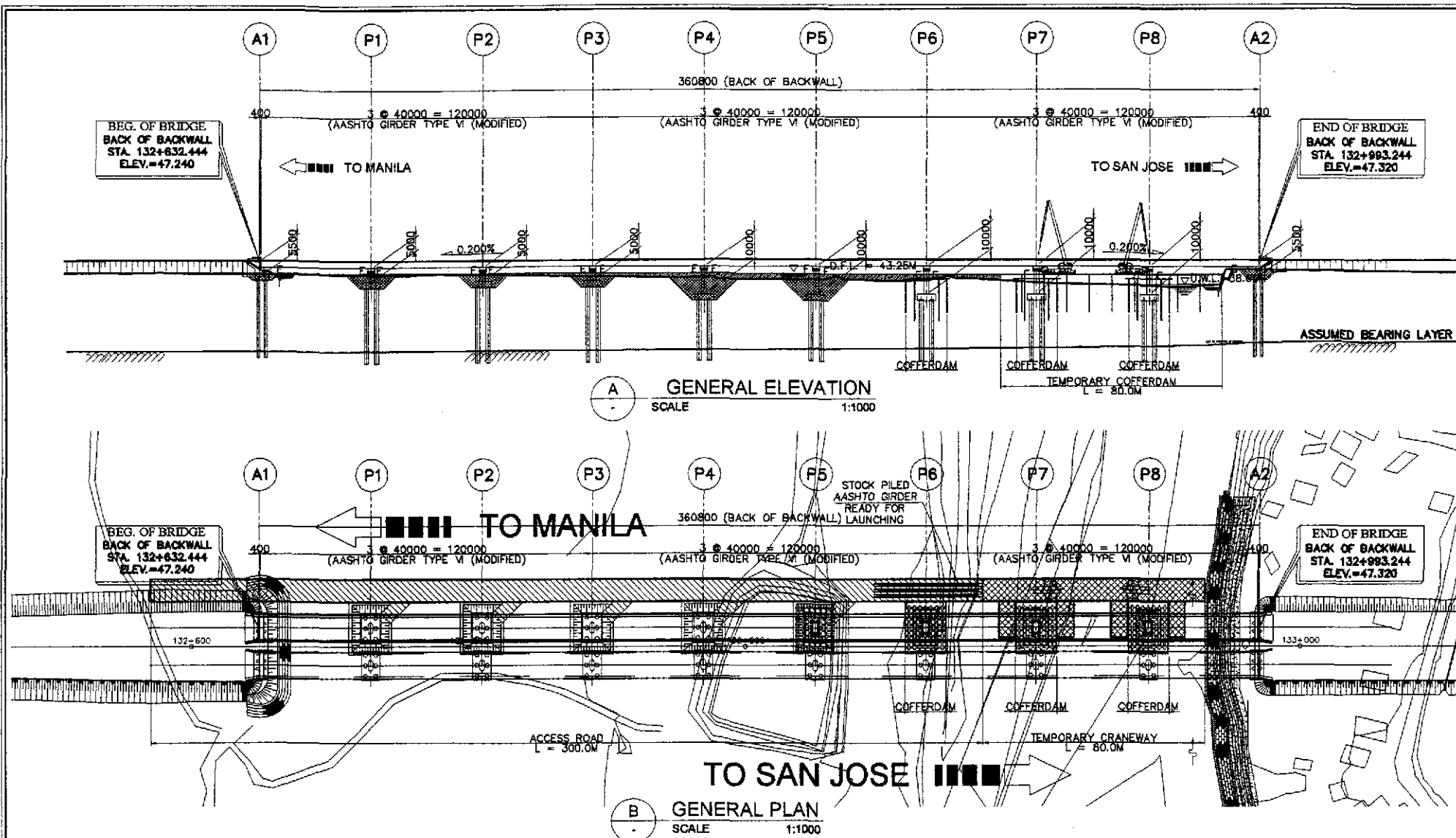
PROJECT AND LOCATION : THE DETAILED DESIGN STUDY ON UPGRADING INTER-URBAN HIGHWAY SYSTEM ALONG THE PAN-PHILIPPINE HIGHWAY (Plaridel, Cabanatuan and San Jose Bypasses)

SCALE : AS SHOWN

SHEET CONTENTS : BRIDGE NO.14 TALavera RIVER BRIDGE DETAILS OF COFFERDAM AND CRANEWAY BRIDGE (ULTIMATE STAGE)

SHEET NO. : B14C-102

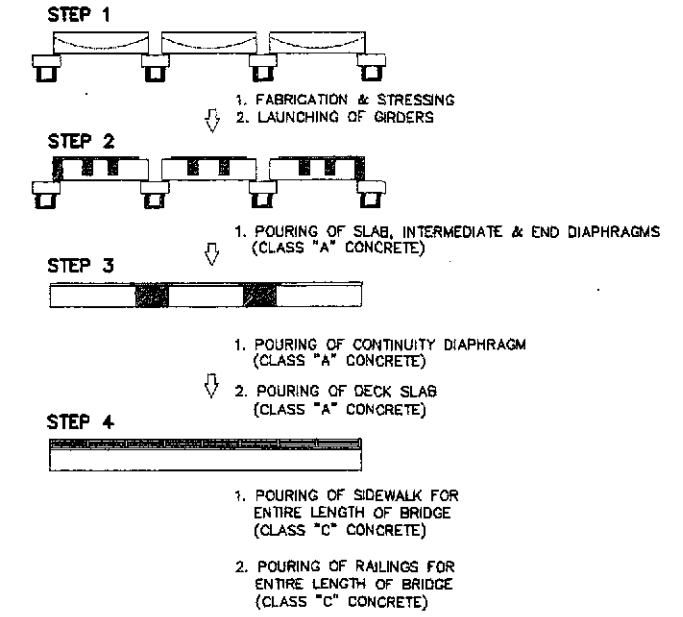
CABANATUAN BYPASS - CONTRACT PACKAGE IV



100t Hydraulic Crane	
Work radius(m)	Lifting Capacity(tf)
10.0	22.4
12.0	18.9
14.0	16.3
16.0	14.1
18.0	12.0
20.0	9.7

Boom Length 29.5m

CONSTRUCTION SEQUENCE OF SUPERSTRUCTURE (3-SPAN CONTINUOUS)



CONSTRUCTION SCHEDULE OF TALAVERA BRIDGE
BRIDGE LENGTH = 360m

ITEMS	QTY.	UNIT	MONTH																				
			1	2	3	4	5	6	7	8	9	10	11	12	13	14	15	16	17	18	19	20	
1. MOBILIZATION	1	LOT	█																				
2. CONSTRUCTION OF TEMPORARY PLANTS & FACILITIES	380	LM.		█																			
3. CONSTRUCTION OF ACCESS ROAD & CRANEWAY				█																			
4. CONSTRUCTION OF SUBSTRUCTURE																							
a. COFFERDAM FOR PIERS P6, P7 & P8	3	SETS																					
b. BORED PILE & PILE CAP	8	SETS																					
c. COLUMN & COPING	8	PCS																					
5. CONSTRUCTION OF ABUTMENTS A1 & A2																							
a. BORED PILE & PILE CAP	2	SETS																					
b. BREAST WALL & WINGWALL	2	SETS																					
c. EMBANKMENT /APPROACH SLAB	2	SETS																					
6. CONSTRUCTION OF SUPERSTRUCTURE																							
a. GIRDER FABRICATION	36	PCS																					
b. LAUNCHING OF GIRDERS	36	PCS																					
c. POURING SLAB END & INTERMEDIATE DIAPHRAGMS	1	LOT																					
d. SLAB & CONTINUITY DIAPHRAGMS (CLOSURE POUR)	9	SPANS																					
e. SIDEWALK, RAILING & WEARING COURSE	9	SPANS																					
7. CONSTRUCTION OF SCOUR PROTECTION																							
c. ABUTMENT SLOPE PROTECTION	1	LOT																					
b. PIER PROTECTION	1	LOT																					
c. RIVER PROTECTION	1	LOT																					
8. FINISHING WORKS/MISCELLANEOUS	1	LOT																					
9. DEMOBILIZATION	1	LOT																					

	DESIGNED	10/17/02				REPUBLIC OF THE PHILIPPINES DEPARTMENT OF PUBLIC WORKS AND HIGHWAYS				PROJECT AND LOCATION : THE DETAILED DESIGN STUDY ON UPGRADING INTER-URBAN HIGHWAY SYSTEM ALONG THE PAN-PHILIPPINE HIGHWAY (Pinaridel, Cabanatuan and San Jose Bypasses)				SCALE :	SHEET CONTENTS :		SHEET NO. :
	CHECKED	10/19/02				BUREAU OF DESIGN OFFICE OF THE SECRETARY				Cabanatuan Bypass - Contract Package IV				AS SHOWN	BRIDGE NO.14 TALAVERA RIVER BRIDGE TENTATIVE CONSTRUCTION PLAN, ELEVATION AND SCHEDULE (ULTIMATE STAGE)		B14C-103
	SUBMITTED	10/21/02				DANILLO C. TRAJANO Project Director				ADRIANO M. DOROY Chief, Bridges Division				FULL SIZE A1			