

別添 5-1

ミニッツ

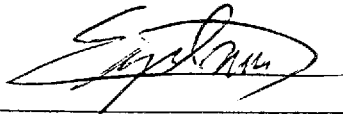
**MINUTES OF MEETING
BETWEEN
THE JAPANESE PREPARATORY STUDY TEAM
AND
THE AUTHORITIES CONCERNED OF
THE GOVERNMENT OF THE KINGDOM OF THAILAND
ON
THE JAPANESE TECHNICAL COOPERATION
FOR
THE ASIA-PACIFIC DEVELOPMENT CENTER ON DISABILITY**

The Japanese Preparatory Study Team (hereinafter referred to as "the Team") organized by the Japan International Cooperation Agency (hereinafter referred to as JICA), headed by Mr. Eiji Inui visited the Kingdom of Thailand from April 7th to 12th, 2002, for the purpose of studying on the Project for the Asia-Pacific Development Center on Disability (hereinafter referred to as "the Project").

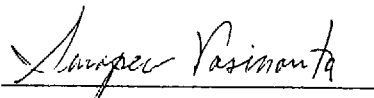
During its stay in the Kingdom of Thailand, the Team had a series of discussions with the authorities concerned of the Kingdom of Thailand (hereinafter referred to as "the Thai side").

The major points of the discussions are summarized in the document attached hereto.

Bangkok, April 10th, 2002



Mr. Eiji Inui
Leader
Preparatory Study Team
Japan International Cooperation
Agency (JICA)



Ms. Surapee Vasinonta
Deputy Director-General
Department of Public Welfare
Ministry of Labour and Social
Welfare

**Major Results of Discussions
for
April 9-10, 2002**

1. Legal Status and Administration of the Asia-Pacific Development Center on Disability (hereinafter referred to as "the Center")

The Team understood the legal status and administration of the Center, which was explained by the Thai side as follows:

1.1 As a series of Thai public sector reforms, a new ministry, which accommodates disability-related activities currently conducted by the Department of Public Welfare, will be established in the Thai fiscal year 2003, starting from October 2002.

1.2 A division solely for the Center will be established in October 2002 under the new ministry, tentatively entitled Ministry of Social Development and Human Security.

1.3 Currently, the Department of Public Welfare is preparing the new division for the Center and will allocate its appropriate personnel for the division. Possibly by July 1, 2002, the Department of Public Welfare will allocate the personnel, who are supposed to be counterpart personnel of the Japanese Technical Cooperation Project Team for the center.

1.4 The new division under the new ministry will be in charge of the establishment of the Center and relevant activities in cooperation with the Japanese Technical Cooperation Project Team.

1.5 After the establishment of the Center, the division personnel will become staff members of the Center. The center will be managed under the supervision of the new ministry until the sustainability of the Center has been secured.

1.6 After securing the sustainable management of the Center, it will be transformed to an "autonomous public organization", which is stipulated by the Royal Decree in accordance with the Thai law. The autonomous public organization will be able to receive financial support from the Royal Thai Government.

8

Amaguchi

1.7 The plan becoming the autonomous public organization, however, needs to be elaborated further by both Japanese and Thai sides.

2. Administration of the Center and the Project

2.1 Organization Chart for the Center:

Both the Team and the Thai side agreed to a drafted Organization Chart for the Center shown as ANNEX 2.

2.2. Financial Base of the Center and the Endowment Fund:

The Thai side confirmed that 5 million Baht per year could be allocated for 5 years. US\$50,000 for the Franklin Delano Roosevelt International Disability Award would be utilized as a new endowment fund for the Center.

3. Expected Technical Assistance from JICA

In May 2002, JICA is going to dispatch a Japanese mission in order to discuss the contents of the Record of Discussions (hereinafter referred to as "R/D") for the Center. Possibly from July 2002, JICA will start the Japanese Technical Cooperation Project in cooperation with the Thai side. JICA will dispatch Japanese experts after the R/D is signed and exchanged by the Thai side and JICA.

4. Spaces and Facilities for the Japanese Technical Cooperation Project Team

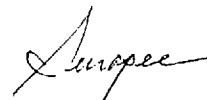
The Thai side agreed that the Ministry of Labour and Social Welfare (or the new ministry) would provide necessary spaces and facilities for the Japanese Technical Cooperation Project Team and its Thai counterparts to carry out their assignments.

5. Contents of the Project Document for the Center

The Team together with Thai key-persons for the Project/Center discussed and drafted the following parts of the Project Document for the Center:

- Activities of the Project/Center
- Terms of Reference for the Project/Center Personnel
- Machinery and Equipment for the Project/Center

In order to conclude the Project Document in May 2002, the Thai side will discuss the above in a sub-committee meeting for the Center and give comments to the Team



though JICA Thailand Office by the end of April 2002.

**6. Expectations from Neighboring Countries to the Center
- Joint Study Mission by Thai and Japanese Group on Cambodia -**

The Joint Study Mission team presented a report on Cambodia which high-lighted their keen interests in collaborating with the Center as well as participating in its program. The team was able to identify focal points in Cambodia. Both the Japanese and Thai members developed a strong tie based on their mutual trust.

7. Others

7.1 Project Document (Draft):

The Team submitted a draft of the Project Document. The Thai side agreed to consider the details of the document and compile comments, and to submit them to JICA Thailand Office by the end of April 2002.

7.2 Record of Discussions (Draft)

The Team prepared a draft of the R/D. The Thai side is expected to discuss the draft and lead to a consensus on the R/D among concerned people and organizations in Thailand before May 2002. The Thai side agreed to submit comments on the R/D to JICA Thailand Office by the end of April 2002.

ANNEX 1 LIST OF MEETING PARTICIPANTS

ANNEX 2 ORGANIZATION CHART

ANNEX 3 PROJECT DESIGN MATRIX (PDM)

ANNEX 4 PLAN OF OPERATION

ANNEX 5 PROJECT DOCUMENT (Draft)



Participants
for the Meeting on the Asia-Pacific Development Center on Disability (APDCD)
Bangkok, April 9-10th, 2002

#	Name	Position Of sub-committee	Position of Organization	Concerned Ministry	Remark
1	Ms. Benja Chonlathanon (Ph.d)	Chairperson	Associate Professor, Rajabhat Institute Suan Dusit *Chairperson of the Thai committee for APDCD	Min. of Education	
2	Mr. Yutaka Takamine	Member	Social Affairs Officer, Economic and Social Commission for Asia and the Pacific (ESCAP)	International Organization	
3	Mr. Banchong Amornchewin	Member	Chief, Japan Sub-division Department of Technical and Economic Cooperation (DTEC)	Prime Minister's Office	
4	Ms.Pattariya Jaruthat (M.D)	Member	Director, Sirindhorn National Medical Rehabilitation Center (SNMRC)	Min.of Public Health	Only 10 th
5	Mr. Monthian Buntan	Member	Executive Committee, the World Blind Union	NGO	
6	Mr. Narong Patibatsarakit	Member	Chairman, Thai with Disability Foundation	NGO	Only 9 th
7	Mr. Topong Kulkhanchit	Member	Regional Development Officer, Disabled Peoples' International (DPI), Asia-Pacific Regional Office	NGO	
8	Ms. Ormporn Nithayasuthi	Member	Director, Office of the Committee for Rehabilitation of Disabled Person, Department of Public Welfare	Min. of Labor and Social Welfare	
9	Mr.Surasak Chittasettakul	Member	Committee Member, National Association of the Deaf in Thailand (NADT)	NGO	Only 10 th
10	Ms.Saranpat Anumatrajakij	Assistant Secretary	Chief, Secretariat Sub-division Office of the Committee for Rehabilitation of Disabled Person, Department of Public Welfare	Min. of Labor and Social Welfare	
11	Ms.Siripen Eamsakul	for Mr.Theera Chantaratr (Member)	Officer, Disability Education Division	Min. of Education	
12	Ms.Saranrat Malawanno	for Mr.Theera Chantaratr (Member)	Officer, Disability Education Division	Min. of Education	

Sungser

B

Participants
for the Meeting on the Asia-Pacific Development Center on Disability (APDCD)
Bangkok, April 9 - 10, 2002

#	Name	Position Of sub-committee	Position of Organization	Concerned Ministry	Remark
13	Mr.Somnuk Chaiwanichya	for Mr.Theera Chantaratr (Member)	Officer, Disability Education Division	Min. of Education	Only 10th
14	Ms. Ploy Suebises	for Ms.Jitprapra Sri- On(Ph.D) (Member)	Lecturer, Ratchasuda College	Min. of University Affairs	
15	Mr.Eiji Inui	Leader, Japanese Mission	Director, First Technical Cooperation Division, Social Development Cooperation Department, JICA(Japan International Cooperation Agency)		
16	Mr. Akiie Ninomiya	Sub-Leader, Japanese Mission	General Director, Canada Asia Social Work Institute		
17	Mr.Ryousuke Matsui	PWD Support Policy (Management of Center), Japanese Mission	Professor, School of Social Welfare , Hokusei Gakuen University		
18	Ms.Yukiko Nakanishi	PWD Support Policy (Empowerment Of PWD Cooperation), Japanese Mission	President, Asia Disability Institute (NGO)		
19	Mr.Hiroshi Kawamura	PWD Support Policy (Information Technology Cooperation), Japanese Mission	Director, Information Center, Japanese Society for Rehabilitation of Persons with Disabilities (NGO)		
20	Ms.Kozue Murayama	Care Staff, Japanese Mission	Care Staff, Human Care Association		
21	Mr.Mituyasu Ida	Project Effect Analysis 1, Japanese Mission	Senior Consultant, Consulting Department, I.C.Net Limited		
22	Ms.Akiko Motozawa	Project Effect Analysis 2, Japanese Mission	Consultant, Consulting Department, I.C.Net Limited		

Signature

✓

Participants
for the Meeting on the Asia-Pacific Development Center on Disability (APDCD)
Bangkok, April 9 – 10, 2002

#	Name	Position Of sub-committee	Position of Organization	Concerned Ministry	Remark
23	Mr. Toshiyuki Okui	Cooperation Planning, Japanese Mission	Staff, First Technical Cooperation Division, Social Development Cooperation Department, JICA		
24	Ms. Naoko Ito	JICA Expert	JICA Expert, JICA Thailand Office		
25	Ms. Busara Tubtimsri	Observer	Assistant, to Dr. Benja, Rajabhat Institute Suan Dusit	Min. of University Affairs	
26	Mr. Hisao Chiba	Observer	ICT Associate Expert Economic and Social Commission for Asia and the Pacific (ESCAP)	International Organization	
27	Ms. Prapanrat Lochaseua	Observer	Assistant Project Officer Disabled Peoples' International (DPI), Asia-Pacific Regional Office	NGO	Only 9 th
28	Mr. Sirichai Subsiri	Observer	President, Association of Physically Handicapped, Thailand (APHD)	NGO	Only 9 th
29	Ms. Witthida Phongpug	Observer	Social Worker, Office of the Committee for Rehabilitation of Disabled Person, Department of Public Welfare	Min. of Labor and Social Welfare	Only 9 th
30	Ms. Pliangpet Limpisiree	Sign Language Interpreter	National Association of the Deaf in Thailand (NADT)	NGO	Only 10 th
31	Mr. Narong Thanomlek	Sign Language Interpreter	National Association of the Deaf in Thailand (NADT)	NGO	Only 10 th

Signature

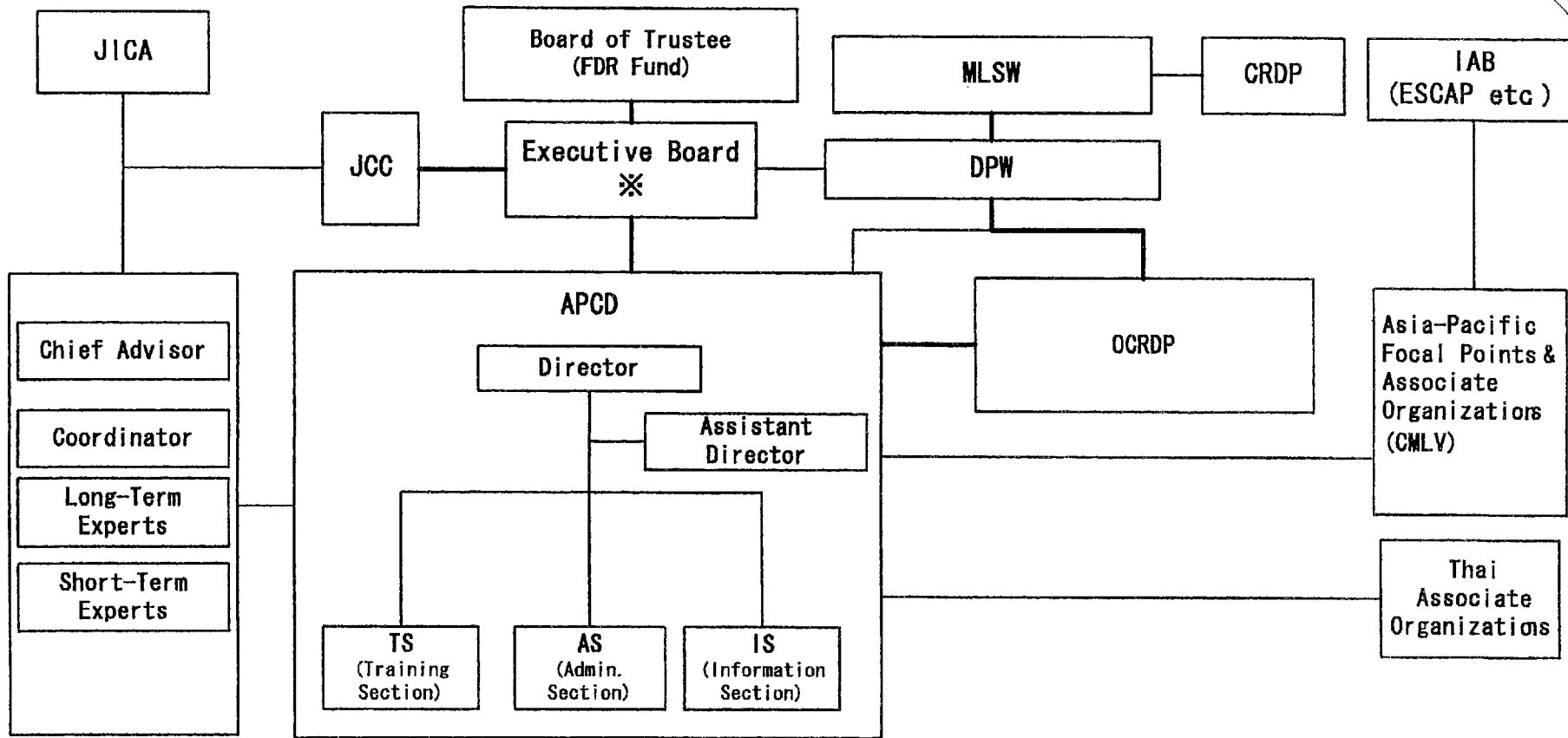
7

Organization Chart

ANNEX 2

10 April 2002

Europe



Remark:
After the Thai government public sector reforms, names of Ministry, Department and sections will be changed.

✓

ANNEX 3 PROJECT DESIGN MATRIX

Project Title: The Project for Asia-Pacific Development Center on Disability

Duration: July 2002 to June 2007

Target group: Persons with disabilities of relevant agencies and groups in developing countries in the Asia-Pacific region

Narrative summary	Indicators	Means of verification	Important assumptions
Overall goals: (in 5 years after the end of project) Empowerment of the Persons with Disabilities and barrier-free society will be well promoted in developing countries in the Asia-Pacific Region.	The APCD is able to cooperate with governments and relevant organizations in the region in formulating and carrying out policies promoting a barrier-free society and the empowerment of the Persons with Disabilities	Records of the APCD	
Project purpose: (by the end of the project) The Center will be established to promote empowerment of the Persons with Disabilities and barrier-free society in developing countries in the Asia-Pacific Region.	The Center is accepted by relevant organizations as the center to promote empowerment of the Persons with Disabilities and barrier-free society. The Center is equipped to disseminate information and conduct training courses. The Center is well managed.	Mid-term (2004-5) and final project evaluation reports (survey results) Completion report of the construction project of the Center building, and mid-term and final project evaluation reports Baseline survey results, Mid-term and final project evaluation reports	
Outputs: 1. The Center will provide information support for the project purpose.	For Output No.1 <ul style="list-style-type: none"> • (Name(s) of the media to be distributed) is published on a regular basis. • High satisfaction with the contents of the APCD's knowledge base (Home page, mailing list, discussion group, etc.) • Number of the visitors to the APCD homepage • Number and contents of the information to be provided to the APCD by focal points in the region. • Number of referral services provided by the APCD • Publications to be produced by the APCD (seminar proceedings, training manuals, video tapes of seminars and 	<ul style="list-style-type: none"> • Records of the APCD • Mid-term and final project evaluation reports • Results of surveys to be conducted by APCD 	

8

L. S. P. C. C.

<p>2. Training courses will be conducted by the Center and in cooperation with associate organizations to promote empowerment of the Persons with Disabilities and barrier-free society.</p> <p>3. The Center will facilitate networking among relevant organizations.</p>	<p>training activities, etc.)</p> <ul style="list-style-type: none"> • Number of visitors of assistive technology and other outputs of the APCD • Number and contents of the ICT training materials produced by the APCD • Number and contents of documents translated into local languages • Number of requests regarding the accessibility of APCD site and facilities <p>For the output No.2</p> <ul style="list-style-type: none"> • Number of courses conducted • Number of participants of the courses • Satisfaction-level with the courses felt by the participants • Number of participants who have given feedback from the training to their organizations in the forms of presentation, reports, etc. • Utilization of skills, knowledge, technologies, etc. obtained by the participants in their organizations • Number and contents of the associate organizations' training activities, supported by the APCD • Accessibility of training courses <p>For the output No.3</p> <ul style="list-style-type: none"> • Number of focal points identified • Number of associate organizations 	<ul style="list-style-type: none"> • Records of the APCD • Mid-term and final project evaluation reports • Results of surveys to be conducted by APCD • Evaluations of the training courses by participants • Follow-up study on the course participants <p>Records of APCD</p>	
--	--	--	--

8

Surgee

<p>Activities:</p> <ol style="list-style-type: none"> 1. Provide information: <ol style="list-style-type: none"> 1.1 Collect information on relevant organizations and other information useful to the Persons with Disabilities. 1.2 Create a database for collected information. 1.3 Provide referral service for information dissemination and raise public awareness. 2. Conduct training: <ul style="list-style-type: none"> • Training for IL leaders • Training for CBR coordinators • Training in ICT and barrier-free environment for the Persons with Disabilities • Training in other areas which have emerging needs 3. Develop existing networks <ol style="list-style-type: none"> 3.1 Identify focal points. 3.2 Identify associate organizations. 4. Other activities <ul style="list-style-type: none"> • Conduct fund-management and fund-raising activities. • Provide consultation to disability-related organizations in for the promotion of human rights of the Persons with Disabilities. • Conduct surveys and collect information in order to monitor and evaluate project performance. • Conduct follow-up survey on the performance of the participants of APCD training courses. • Promote, support, collaborate and facilitate R & D. 	<p>Inputs:</p> <p>Japanese side:</p> <ol style="list-style-type: none"> 1. Dispatch of experts: <ol style="list-style-type: none"> (1) Long-term experts <ul style="list-style-type: none"> - Chief adviser - Coordinator - HRD - ICT (2) Short-term Experts 2. Training of counterpart personnel (C/P) in Japan 3. Equipment & materials To be determined after the plan of operations (PO) of the project is completed and agreed by both sides. <p>Thai side:</p> <ol style="list-style-type: none"> 1. Assignment of counterpart personnel 2. Center staff salaries 3. Recurrent costs 	<p>Preconditions:</p> <p>Relevant organizations are willing to participate in the proposed Center activities.</p>
---	--	---

8

Sunggec

Plan of Operations for the APCD Project

ANNEX 4

Project Purpose: The Center will be established to promote empowerment of PWD and barrier-free society in developing countries in Asia-Pacific.	1st year				2nd year				3rd year				4th year				5th year							
	1/4	2/4	3/4	4/4	1/4	2/4	3/4	4/4	1/4	2/4	3/4	4/4	1/4	2/4	3/4	4/4	1/4	2/4	3/4	4/4				
Output 1: The Center will provide information support for the project purpose.					Monitoring				Monitoring				Mid-term evaluation				Monitoring				Final evaluation			
Output 2: Training courses will be conducted by the Center and in cooperation with associate agencies/groups to promote empowerment of PWD and barrier-free society.	→				→				→				→				→				→			
Output 3: The Center will facilitate networking among relevant agencies and groups.	→				→				→				→				→				→			
Output 4: The Center will be able to coordinate all relevant activities to be conducted within the Center as well as at associate agencies/groups.	→				→				→				→				→				→			

Activities	Goal Target	Responsible person Thai / Jap.	1st year				2nd year				3rd year				4th year				5th year			
			1/4	2/4	3/4	4/4	1/4	2/4	3/4	4/4	1/4	2/4	3/4	4/4	1/4	2/4	3/4	4/4	1/4	2/4	3/4	4/4
1.1 Collect information on relevant organizations and other useful information to PWDs.			Planning/baseline survey								Information gathering for mid-term evaluation											
1.2 Make database with collected information and file printing materials.			data collection and processing												Information gathering for evaluation							
1.3 Disseminate information and raise public awareness.			Dissemination																			
2. Conduct training courses			Workshop (1W)				IL Workshop (1W)				IL Workshop (1W)											
	Thailand		→				→				→											
	Indochina + Myanmar		Study attachment (10 days)				Study attachment (10 days)															
	Indochina + Myanmar		W/S for seeking common understanding of OBR (1W)				W/S for seeking common understanding of OBR (1W)															
	Asia and the Pacific						IL (3M)				IL (3M)				IL (3M)							
	Asia and the Pacific						OBR (3M)				OBR (3M)				OBR (3M)							
	Asia and the Pacific						Self-help organization (3M)				Self-help organization (3M)				Self-help organization (3M)							
	Asia and the Pacific						Peer counselor training (2W)				Peer counselor training (2W)				Peer counselor training (2W)							
	Asia and the Pacific		VIP (3M)				VIP (3M)				VIP (3M)				VIP (3M)							
	Asia and the Pacific		ICT for all (3M)				ICT for all (3M)				ICT for all (3M)				ICT for all (3M)							
	Asia and the Pacific						Training materials (2M)				Training materials (2M)				Training materials (2M)							
	Asia and the Pacific		Non-handicapping environment of EGAP (2W)				Non-handicapping environment of EGAP (2W)				Non-handicapping environment of EGAP (2W)				Non-handicapping environment of EGAP (2W)							
	Asia and the Pacific		Capacity building seminar				Capacity building seminar				Capacity building seminar				Capacity building seminar							
3. Networking and Coordination																						
3.1 Focal Points																						
(1) Define the role																						
(2) Identify focal points																						
(3) Sign MOUs																						
(4) Monitor the progress																						
3.2 Associated Organization																						
(1) Define the role																						
(2) Select Associate organizations																						
(3) Sign agreement																						
(4) Form the groups of associates																						
(5) Expand to other countries																						

Handwritten signature

PROJECT DOCUMENT

ASIA-PACIFIC DEVELOPMENT CENTER

ON

DISABILITY

April 2002



別添 5－2

各分野の活動案検討資料

情報支援分野活動内容(仮)

Information Sharing

Web based information sharing

- Web site building training
- Web Accessibility Workshop
- Common Format/Templates
- Printing, CD-ROM publication support
- Web site maintenance

Center Web site information services

- Resources Directory (Links +)
- 107 Targets evaluation database
- PR of APCD

Outreaching

Workshop/Training to set up Internet based information services for potential focal points

- Distance Learning Support
- Workshop
- Research on Internet Access

Accessible Multimedia Production/Dissemination

- Support for Local languages without its own scripts
- Mobile information package development
(Projector+PC+Portable Screen+DAISY Contents)

Publication/Handouts in local languages

Research on Radio broadcasting services

Public Relations

Resource Room (library function + samples)

Information Services

- Reference services

Referral Services

APCD brochure, poster, video

In House Information Services

Documentation/Archival services

Book/Journal/Newsletter collection development

Data Conversion Services (collaboration with Experts)

-Support For Print disabled

-Captioning

Adaptation Services (collaboration with Experts)

-Screen Reader + Refreshable Braille

-Adaptive Keyboard + Switches

Communication Support

Sign Language Interpretation

Language Interpretation

Internet/E-mail Account

Public online terminal

APCD PR webpage management

Training for Information Support

20 trainees/session x 2 / year

1-2 weeks in BKK

Web site management

-HTML/XHTML Basics

-CSS

-Contents Accessibility Guidelines

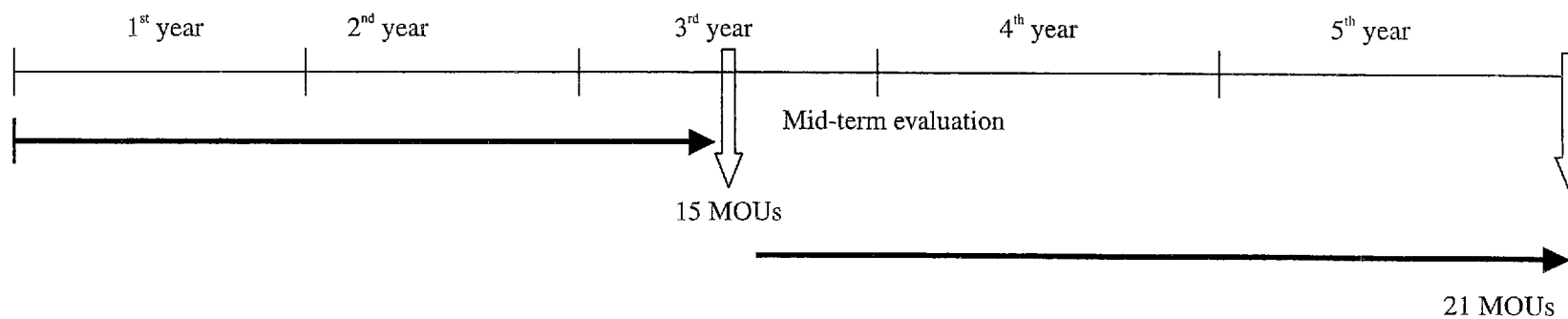
-Multimedia contents

-Useful tools

調整・ネットワーキング分野活動内容(仮)

Activities: Networking & Coordination

(1) Focal points



1. Define the role and responsibility of the focal point, and study the conditions of respective countries. (The roles: Provide information to the APCD, provide resources, dissemination information to other organizations, including translation.)
2. Identify focal points.
3. Sign MOUs. (Review the MOU every 3 years.)
4. Monitor the performance of the focal points.

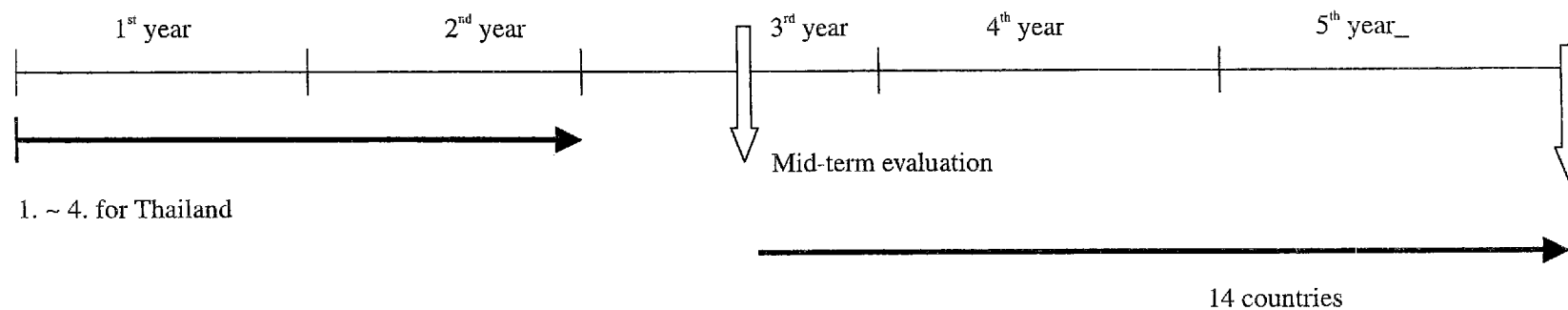
Candidates for the focal points:

Thailand: OCRDP, Laos: National Rehabilitation Center, Myanmar: DSW, Cambodia: DAC, Viet Nam: MOLISA

MOU target:

36 ESCAP member countries in the region (excluding New Zealand, Australia, Japan, Korea and Singapore)

(2) Associate organizations



1. Define the role of the associate organization.

- Provide financial support.
- Conduct training (e.g. IL, CBR, etc.)
- Dispatch specialists/trainers.
- Provide facilities and equipment.
- Provide technical support (e.g. sign language, brille, etc.)
- Provide referral service and collaborate to the center programs.

2. Sign the agreement with associate organizations.

3. Select the associate organizations that can provide excellent support and services.

4. Form an organization of the Associate Organizations for the APCD.

5. Expand to other 15 countries based on the MOUs or through the focal points after the 3rd year.

人材育成分野活動内容(仮)

S-1 Study Attachment for Strengthening Foundation of Self-help Organization

Background: In the Asia-Pacific Region, Thailand is one of the few countries which established a national cross-disability self-help organization. Council of Disabled People in Thailand, started in the beginning of 1980s. Cambodia succeeded to have a national self-help group in the 1990. Lao PDA established it officially in the end of 1990s. In Vietnam, movement for establishment of a national self-help group is in satisfactory progress. PWDs in Myanmar began to organize their national group. They try to develop a similar structure in their own countries. For them, self-help movement in Thailand has shown remarkable model with more than 20-year experience.

Target: 4 persons with disabilities from Cambodia, Lao PDR, Myanmar, and Vietnam, and their personal assistants if necessary.

Purpose: To strengthen the foundation of self-help organizations through

- learning activities, especially advocacy of human rights of PWD
- acquisition of self-help concept and cross-disability philosophy
- studying resource mobilization technique including fundraising

Organizer: DPI Asia-Pacific Regional Office

Time: 10 days in September 2002

Content

Day 1

09:00-09:30	Registration
09:30 – 10:00	Opening Ceremony
	Opening speech
	- Director General, Public Welfare Department, Ministry of Labour and Social Welfare
	- Resident Representative, JICA Thai Office
10:00-10:30	Group photo / Coffee
10:30-11:30	“Philosophy and Meaning of self-help activity”

- Mr. Yutaka Takamine, Social Affairs Officer, SDD, UN-ESCAP
- 11:30-12:30 “History of Self-help Movement and Its Impact on Government Policy”
Chairperson, Council of Disabled People of Thailand
- 12:30 – 13:30 Lunch
- 13:30 - 15.30 Visit to the Council of Disabled People in Thailand
- Discussion with officers and office staff
- 15.30- 16.30 Visit to the Goodwill Industry

Day 2

- 09:00- 09:45 Group discussion on the field visit
- 09:45 –10:00 Report from groups
- 10:00 –10:30 Coffee
- 10:30 – 11:30 “Overview of the Situation of Persons with Disabilities in Indochina”
Ms. Naoko Ito, JICA Expert
- 11:30 – 12:30 “History and Activities of the Thai Association of the Blind”
President, Thai Association of the Blind
- 12:30 – 13:30 Lunch
- 13:30 - 14:30 Country report: Cambodia and Lao PDR
- 14:30 - Visit to the Thai Association of the Blind
- Discussion with officers and office staff
- Observe their activities including income generation and service provision

Day 3

- 09:00- 09:45 Group discussion on the field visit
- 09:45 –10:00 Report from groups
- 10:00 –10:30 Coffee
- 10:30 – 11:30 “Asia-Pacific Decade of Disabled Persons and Convention of Human Rights of Disabled Persons”
Mr. Topong Kulkhanchit, DPI Asia-Pacific Regional Development Officer
- 11:30 – 12:30 “History and Activities of the National Association of the Deaf ”
President, National Association of the Deaf
- 12:30 – 13:30 Lunch

- 13:30 – 14:30 Country report: Myanmar and Vietnam
 14:30 Visit to National Association of the Deaf
 - Discussion with officers and office staff
 - Visit the Silent World Workshop

Day 4

- 09:00 - 09:45 Group discussion on the field visit
 09:45 –10:00 Report from groups
 10:00 –10:30 Coffee
 10:30 – 11:30 “Role of Self-help Organizations in Networking with Governmental Organizations and Non-Governmental Organizations”
 Secretary, Office of the Committee for Rehabilitation of Disabled Persons
 11:30 – 12:30 “Voice of Persons with Intellectual, Behavioral Disability in Cross Disability Movement”
 President, Parents Association for the Autism
 12:30 – 13:30 Lunch
 13:30 – 16.30 Visit to GOs and NGOs
 -Sirindhorn National Medical Rehabilitation Center
 - Handicap International

Day 5

- 09:00- 09:45 Group discussion on the field visit
 09:45 –10:00 Report from groups
 10:00 –10:30 Coffee
 10:30 – 11:30 “Self-help organization in relation with Community-Based Rehabilitation (CBR) ”
 Coordinator, Foundation for Children with Disabilities
 11:30 – 12:30 “Self-help organization in relation with Independent Living (IL)”
 Supornnum Mongkolsawadi, Redemptorist Vocational School for the Disabled.
 12:30 – 13:30 Lunch
 13:30 – 14:30 Presentation of video films on IL
 14:30 - CBR site visit

Day 6

- 09:00 Leaving for Pattaya
- 11:30 – 12:30 Visit to Redemptorist Vocational School for the Disabled
- Discussion with Principle
- 12:30-13:30 Lunch
- 13:30-14:30 “History and Activities of the Chonburi Association of Disabled
Persons”
President, Chonburi Association of Disabled Persons
- 14:30 Visit to local members of the Association
- 19:00 Fellowship with students

Day 7

- 08:00 – 08:30 General Assembly of the School
- 08:30 – 10:00 Observe Classes
- 10:30 - 12:00 Discussion with teachers and volunteers
- 12:00 – 13:00 Lunch
- 13:00 Sightseeing in Pattaya on the way back to Bangkok

Day 8

- 09:00- 09:45 Group discussion on the field visit
- 09:45 –10:00 Report from groups
- 10:00 –10:30 Coffee
- 10:30 – 11:30 “Freedom from Barriers as Common Goal”
Mr. Narong Patibatsarakich
- 11:30 – 12:30 “History and Activities of the Association of the Physically
Handicapped of Thailand”
President, Association of the Physically Handicapped of Thailand”
- 12:30 – 13:30 Lunch
- 13:30 Visit to Association of the Physically Handicapped of Thailand
- Discussion with officers and office staff
- Visit the ThaiWheel Factory

Day 9

- 09:00- 09:45 Group discussion on the field visit
- 09:45 –10:00 Report from groups
- 10:00 –10:30 Coffee

- 10:30 – 11:30 “Advocacy as Key Activity of Self-help Organization”
Mr. Monthien Buntan, Ratchsuda College, Mahidol University
- 11:30 – 12:30 “Effective Management of Self-Help Organization including Resource Mobilization”
Mr. Wiriya Namsiripongpung, Faculty of Law, Thammasat University
- 12:30 – 13:30 Lunch
- 13:30 – 14:30 “Promotion of Awareness in and out of Self-help Organization ”
Member, Committee for Rehabilitation of Disabled Persons
- 14:30 - 17:00 Group work on how to develop a national self-help organization over coffee

Day 10

- 09:00- 10:00 Presentation of group works
- 10:00 – 10:30 Summarization and comment
Mr. Topong Kulkhanchit
- 10:30 – 11:00 Coffee
- 11:00 – 11:30 Evaluation of the Study Attachment
- 11:30 – 12:00 Certification Awarding & Closing Ceremony

Budget

ITEMS OF EXPENSES

I Invitation Expenses

- 1 Air Fare (Round Trip)
 - 1.1 Overseas participants(16 from CLMV)
 - 1.2 Personal assistants to participants
- 2 Transportation (Airport to/from Hotel)
- 3 Accommodation
 - 3.1 Overseas participants and their PA
- 4 Per-Diem (for meals, etc.)
 - 4.1 Overseas participants
 - 4.2 Personal assistants to participants
- 5 Medical Care

	Baht/per	Person	Night/Day	Baht
1.1	15,000	16		240,000
1.2	15,000	8		120,000
2	500	16		8,000
3.1	1,500	16	10	240,000
4.1	500	16	10	80,000
4.2	300	8	10	24,000
5	500	16		8,000
Sub-total:				720,000

II Training expenses

	Baht/per	Person	Night/Day	Baht
--	----------	--------	-----------	------

1	Honoraria for external lecturers				
1.1	Thai lecturers	1,500	10		15,000
2	Employment Fee				
2.1	Interpreters	15,000	2	10	300,000
2.2	Sign Language Interpreters	8,000	2	10	160,000
2.3	Secretariat staff	1,000	1	10	10,000
3	Transportation				
3.1	Rental of vehicles	2,500	2	8	40,000
3.2	Field Trip	2,500	2	2	10,000
4	Expendable Supplies				
4.1	Photocopying services				10,000
4.2	Stationeries	1,000	16		16,000
5	Meeting expenses				
5.1	Training venue	400	16	10	64,000
5.2	Training facility	500		10	5,000
5.3	Opening Ceremony	500	40		20,000
5.4	Closing Ceremony	500	40		20,000
6	Printing				
6.1	GI	100	16		1,600
6.2	Certificates	100	16		1,600
7	Expensable Supplies				
7.1	Textbook	500	16		8,000
8	Others				
8.1	Communication				10,000
8.2	Course Report	200	20		4,000
Sub-total:					695,200

The above I & II: Grand total: 1,415,200
per time

* ## per time × 2 times = 2,830,400

Terms of Reference of Short-term Experts

Experts on management of self-help organization of disabled persons

1. Qualification:

- 1) Academic degree: not required specifically
- 2) Experience: 3 years of continued experience in the management of self-help group
- 3) Language level: not specifically required. If necessary, interpretation is provided.
- 4) Remarks: The expert is preferably from JICA or NGOs.

Priority is given to persons with disabilities.

2. Job description

- 5) Location / office: APCD
- 6) Proponent: JICA
- 7) Period: 1 week to 3 months.

3. Detailed Activity

- 3.1 The selected experts will organize the training program from resources both within and outside the Center.
- 3.2 They will implement a training program for the efficient and effective study/management of self-help groups as course leader and resource person in close consultation with the Development Expert for Disability Program.
- 3.3 They will select the trainees based on the recommendations made by self-help groups.
- 3.4 On behalf of the trainees, especially those with severe disabilities, they will closely cooperate with the center to provide a barrier-free environment.
- 3.5 They will serve as a role model for disabled persons managing their self-help groups with strong leadership
- 3.6 They should have information on the global self-help movement of disabled persons.
- 3.7 They will ensure the trainees to understand the human rights of disabled persons in the context disability related international norms and standards.

S-2 Workshop for Seeking Common Understanding of CBR (DRAFT)

Background: There are many CBR programs implemented by governments and NGOs. Especially in Indochina countries, CBR is regarded as an alternative method to provide low-cost rehabilitation to persons with disabilities. Although all of the programs aim to make persons with disabilities in their communities empowered, their approaches, basic concepts and programs vary.

Purpose: To provide the common understanding CBR through:

- identifying good practices in CBR and the lessons to be drawn from them for strengthening services for disabled persons in the Indochina countries;
- generating recommendations to be considered in organizing the proposed training course of CBR workers to make the course organization appropriate and effective;
- promoting South-to-South dialogue on experiences in CBR service provision.

Target: 12 persons; One government officer, One CBR manager/coordinator, and One representative of self-help organization of persons with disabilities and, if necessary, their personal assistants, from Cambodia, Lao PDR, Myanmar, and Vietnam

Course Leader: Dr. Padmani Mendis, CBR consultant, Sri Lanka. She has been with WHO to promote CBR programs in developing countries.

Mr. Somchai Rungsilp, Handicap International.

Time: Ten days in March 2003

Content:

Day 1 (Concept)

Opening

Keynote

CBR: CBR concept

CBR: UN Norms & Standards

Day 2 (Concept)

CBR: Empowerment of PWDs

CBR: Management of Independent Living Center

CBR: Participatory Rural Development

CBR: CBR as an approach

Field visit to residential home and CBR projects

Day 3-5

Field visit to residential home and CBR project

Day 6-7

CBR in practice: presentation for CBR projects and comment

Day 8

CBR in practice: The content can be raised by the participants (Management)

Day 9

CBR in practice: The content can be raised by the participants (Human resource development)

Day 10

Conclusion and Application

Budget

ITEMS OF EXPENSES							
I Invitation Expenses				Baht/per	Person	Night/Day	Baht
1	Air Fare (Round Trip)						
	1.1	Overseas participants(12 from CLMV)		15,000	12		180,000
	1.2	Overseas lecturers (2 from Sri Lanka etc.)		30,000	2		60,000
2	Transportation (Airport to/from Hotel)			500	12		6,000
3	Accommodation						
	3.1	Overseas participants		1,500	12	7	126,000
4	Per-Diem (for meals, etc.)						
	4.1	Overseas participants		500	12	7	42,000
5	Medical Care			500	12		6,000
				Sub-total:			420,000
II Training expenses				Baht/per	Person	Night/Day	Baht
1	Honoraria for external lecturers						
	1.1	Thai lecturers		1,500	5		7,500
	1.2	Overseas lecturers (2 from Sri Lanka etc.)		900	2	7	12,600
2	Employment Fee						
	2.1	Interpreters		15,000	2	7	210,000
	2.2	Sign Language Interpreters		8,000	2	7	112,000
	2.3	Secretariat staff		1,000	1	7	7,000
3	Transportation						
	3.1	Rental of vehicles		2,500	2	5	25,000
	3.2	Field Trip		2,500	2	2	10,000
4	Expendable Supplies						
	4.1	Photocopying services					10,000
	4.2	Stationeries		1,000	12		12,000
5	Meeting expenses						
	5.1	Training venue		400	12	7	33,600
	5.2	Training facility		200		7	1,400
	5.3	Opening Ceremony		500	30		15,000
	5.4	Closing Ceremony		500	30		15,000
6	Printing						
	6.1	GI		100	12		1,200
	6.2	Certificates		100	12		1,200
7	Expensable Supplies						
	7.1	Textbook		500	12		6,000
8	Others						

	8.1	Communication					10,000
	8.2	Course Report		200	20		4,000
				Sub-total:			493,500
				The above I & II:		Grand total:	913,500
							per time
			*	913,500	per time ×	2 times =	1,827,000

Terms of Reference of Short-term Expert

CBR Experts

1. Qualification:

- 1) Academic degree: not required specifically
- 2) Experience: 3 years of continued experience in the field of assignment
- 3) Language level: not specifically required. If necessary, interpretation is provided.
- 4) Remarks: The expert is preferably from JICA or NGO

2. Job description

- 1) Location / office: APCD
- 2) Proponent: JICA
- 3) Period: 1 week to 3 months.

3. Detailed Activity

- 3.1 The selected experts will prepare training programs from resources both within and outside the Center, with due attention given to the concept of full participation of disabled persons.
- 3.2 They will select the trainees based on recommendations made by disability-related organizations, particularly self-help groups of PWDs.
- 3.3 They will provide a barrier-free environment to the trainees and consult extensively with the Development Expert for Disability Program.
- 3.4 They will have an ability to share models of CBR with the trainees.
- 3.5 They will ensure the trainees to understand the human rights of disabled persons in context of disability related international norms and standards.

L-1 Training Program for Leaders in Independent Living Movement (DRAFT)

Staff Member

1 st Year	
Group Leader	2 IL experts with disabilities from Japan
Resource Person	4 persons with disabilities (PWD) from Japan
Assistant	2 Thais with disabilities who completed the JICA-sponsored IL course/workshop
2nd Year	
Group Leader	2 IL experts with disabilities from Japan
Resource Person	2 PWD from Japan
	2 Thais with disabilities who completed the JICA-sponsored IL course/workshop
Assistant	2 Thais with disabilities who completed the JICA-sponsored IL course/workshop
3rd Year	
Group Leader	1 IL expert with disability from Japan
	1 Thai with disability who completed the JICA-sponsored IL course/workshop
Resource Person	2 PWD from Japan
	2 Thais with disabilities who completed the JICA-sponsored IL course/workshop
Assistant	2 Thais with disabilities who completed the JICA-sponsored IL course/workshop
4th Year and afterwards	
Group Leader	2 Thais with disabilities who completed the JICA-sponsored IL course/workshop
Resource Person	1 PWD from Japan
	3 Thais with disabilities who completed the JICA-sponsored IL course/workshop
Assistant	2 Thais with disabilities who completed the JICA-sponsored IL course/workshop

Participants: 12 PWD with their personal assistants/interpreters, if necessary

Duration: 3 months (14 weeks)

Content

	Morning	Afternoon
1 st week:	Orientation/Introduction	
1 1	Orientation, self-introduction, sharing the motivation to participate	
1 2	Sharing: each one's view on IL	Self-evaluation: one's own IL needs
1 3	Lecture: concept of IL	Lecture and video presentation: IL history in the world
1 4	Lecture and video presentation: services provided by IL center	
1 5	Lecture and discussion: measures for and views on empowerment	
Weekend	Survey of accessibility in Bangkok	
2 nd week:	Peer Counselling (PC)	
2 1	Lecture: meaning, purpose and effectiveness of PC	Demonstration
2 2	Lecture: measures of ice-breaking	Group work: new and good
2 3	Lecture: conditions of PC	Training: Listening
2 4	Exercise: PC	
2 5	Exercise: PC	
Weekend	Visit to the DPI Asia-Pacific Regional Office	
3 rd week:	PC	
3 1	Group work: new and good	Role playing
3 2	Lecture: condition of peer counsellors	Exercise: PC
3 3	Lecture: organization of PC course	Exercise: PC
3 4	Lecture: follow-up of PC course	Exercise: PC
3 5	Exercise: planning of PC course	Exercise: PC
Weekend	Exchange with the Association of the Physically Handicapped in Thailand	

4 th week: IL Skill Training		
4 1	Group work: new and good	Lecture: IL skill training program and its value
4 2	Lecture : IL skill training manual and its utilization	Exercise: how to use the manual
4 3	Lecture: relationship with PC	Role playing
4 4	Exercise : IL skill training based on the manual	
4—5	Exercise : IL skill training based on the manual	
Weekend	Visit to Thailand Association of the Blind	
5 th week: IL Skill Training		
5—1	Group work: new and good	Lecture and discussion: Role of peer counsellor
5—2	Exercise : IL skill training based on the manual	
5 3	Lecture: guideline to organize IL skill training course	Exercise
5 4	Lecture: follow-up of the course	Exercise
5 5	Exercise : IL skill training based on the manual	
Weekend	Visit to the Association of the Deaf in Thailand	
6 th week: Personal Assistant Service		
6—1	Group work: new and good	Lecture and discussion: basic concept of personal assistant service
6—2	Lecture: procedure to provide personal assistant service	Exercise: interview with user and visit to his/her house
6 3	Lecture: recruitment of personal assistant (PA) and his/her training	Exercise
6 4	Lecture : PWD's needs	Discussion
6 5	Lecture: coping with troubles	Exercise
Weekend	Visit to the home of person with severe disability	
7 th week: IL center		
7 1	Group work: new and good	Lecture: IL center as business entity
7 2	Lecture and video presentation: guideline on management of IL center	
7 3	Lecture: Role model and meaning of PWD as service provider	Discussion
7 4	Lecture: measures to facilitate the discussion with persons with intellectual and psychiatric disabilities	
7 5	Lecture: IL center and government	Discussion
Weekend	Exchange with organizations of persons with intellectual and psychiatric disabilities	
8 th week: Activities of IL Center		
8 1	Group work: new and good	Lecture and video presentation: services provided
8 2	Lecture: advocacy	Discussion
8 3	Lecture and video presentation: community welfare scheme including accessible transportation and accessible city plan	
8 4	Comparative study: governmental services and schemes	

8	5	Lecture: communication and collaboration with other organizations	
Weekend		Exchange with Nonthaburi Association of Disabled Persons	
9 th week: IL Support			
9	1	Group work: new and good	Lecture and discussion: basic concept of the support
9	2	Lecture: remodeling house, self-help devices and community fund	Discussion
9	3	Lecture: IL skill training and PC for group/individual before starting IL	Exercise
9	4	Lecture: Experiencing IL and IL experience room	Exercise
9	5	Lecture: center's support for IL preparation, timing for recruiting PA, etc	Discussion
Weekend		Exchange with Association for the Mentally Retarded	
10 th week: IL Support			
10	1	Group work: new and good	Lecture and exercise: individual planning just before starting IL
10	2	Group work: making an individual program	
10	3	Report and discussion: an individual program	
10	4	Lecture: individual program a week before starting IL program and follow-up by IL center	Exercise
10	5	Lecture: IL skill training at each phase of IL	
Weekend		Home stay at PWD's house	
11 th week: Lobbying			
11	1	Group work: new and good	Lecture and discussion: reason why lobbying is needed
11	2	Lecture: history and concept of PA scheme	Discussion
11	3	Visit to a local welfare office	
11	4	Lecture: lobbying before and after starting IL	Role playing
11	5	Lecture: creating services which are not available	Discussion
12 th week: Management of IL Center			
12	1	Group work: new and good	Lecture and discussion: conditions as business entity
12	2	Lecture: constitution, action plan and budget	Discussion
12	3	Lecture: necessary service and activity and their implementation	Discussion
12	4	Lecture: information control and crisis control	Discussion
12	5	Lecture public relations and organization of event	Discussion
13 th week: Way to Independence			

1 3 - 1	Group work: new and good	Exercise: planning group trip
1 3 - 2	Survey: available resources	
1 3 - 3	Report: group plan	Discussion: participant's changed view on IL
1 3 - 4	Lecture: methods of activity evaluation	Exercise
1 3 - 5	Lecture: Individual action plan	Discussion
Weekend	Each participant complete his/her own individual plan.	
14 th week:	Conclusion	
1 4 1	Group work: new and good	Report: individual plan
1 4 2	Exercise: trip to Pattaya, etc according to group plan	
1 4 3	Exercise: presentation for local PWD's group, evaluation of group action	
1 4 4	Coming back	
1 4 5	Evaluation of the training program	Closing ceremony

Budget

ITEMS OF EXPENSES								
			Baht/per	Person	Night/Day		Baht	
I	Invitation Expenses							
	1 Air Fare (Round Trip)							
	1.1 Overseas participants(12 from Asia & the Pacific)		40,000	12			480,000	
	1.2 Overseas lecturers(6 from Japan)		40,000	6			240,000	
	1.3 Personal assistants for participants		40,000	10			400,000	
	1.4 Personal assistant for lecturers		40,000	4			160,000	
	2 Transportation (Airport to/from Hotel)							
	2.1 Overseas participants and their PA		500	12			6,000	
	2.2 Overseas lecturers		500	6			3,000	
	3 Accommodation							
	3.1 Overseas participants and their PA		1,500	12	98		1,764,000	
	2.2 Overseas lecturers and their PA		1,500	6	20		180,000	
	4 Per-Diem (for meals, etc.)							
	4.1 Overseas participants		300	12	100		360,000	
	5 Medical Care		1,500	12			18,000	
			Sub-total:					3,611,000

II	Training expenses		Baht/per	Person	Night/Day	Baht
1	Honoraria for external lecturers					
	1.1 Thai lecturers		1,500	2		3,000
	1.2 Overseas lecturers(6 from Japan)		900	6	15	81,000
2	Employment Fee					
	2.1 Interpreters		15,000	2	35	1,050,000
	2.2 Sign Language Interpreters		8,000	2	35	560,000
	2.3 Secretariat staff		1,000	2	50	100,000
3	Transportation					
	3.1 Rental of vehicles		2,500	2	70	350,000
	3.2 Field Trip		2,500	2	5	25,000
4	Expendable Supplies					
	4.1 Photocopying services					30,000
	4.2 Stationeries		1,000	12		12,000
5	Meeting expenses					
	5.1 Training venue		200	12	70	168,000
	5.2 Training facility		100		70	7,000
	5.3 Opening Ceremony		500	30		15,000
	5.4 Closing Ceremony		500	30		15,000
6	Printing					
	6.1 GI		100	12		1,200
	6.2 Certificates		100	12		1,200
7	Expensable Supplies					
	7.1 Textbook		500	12		6,000
8	Others					
	8.1 Communication					30,000
	8.2 Course Report		200	20		4,000
			Sub-tota l:			<u>2,458,400</u>

				The above I & II:			Grand total:	6,069,400
								per time
				* 6,069,400	per time ×	3	times =	18,208,200

Terms of Reference of Short-term Experts

Independent living experts

1. Qualification:

- 1) Academic degree: not required specifically
- 2) Experience: 3 years of continued experience in the field of assignment
- 3) Language level: not specifically required. If necessary, interpretation is provided.
- 4) Remarks: The experts are preferably from JICA or NGOs.

The experts should have disability.

2. Job description

- 1) Location / office: APCD
- 2) Proponent: JICA
- 3) Period: 1 week to 3 months.

3. Detailed Activity

- 3.1 The selected experts will organize the training program from resources both within and outside the Center
- 3.2 They will implement training programs in their specific fields, i.e. peer counseling and independent living skills training as course leader and resource person in close cooperation with the Development Expert for Disability Program.
- 3.3 They will select the trainees based on the recommendations made by self-help groups.
- 3.4 On behalf of the trainees, especially those with severe disabilities, they will request the Center provide a barrier-free environment.
- 3.5 They will serve as role models for disabled persons living independently in community.
- 3.6 They will ensure the trainees to understand the philosophy of independent living in the

context of disability related international norms and standards

L-2 Training Program for CBR Worker (DRAFT)

Staff: 1 CBR expert, and 1 leader with disability having community development experiences

4 resource persons

2 assistants

Participant: 12

If necessary, participants with disabilities can bring their own personal assistants/interpreters.

Duration: 3 months (14 weeks)

Content

In addition to the following, there is a Thai language/culture class every evening.

	Morning	Afternoon
1 st week:	Orientation and Introduction	
1 1	Orientation, Introduction, and Sharing of each one's motivation to participate	
1 2	Lecture: concept and purpose of CBR	Discussion
1 3	Presentation: participant's CBR project	
1 4	Presentation: participant's CBR project	
1 5	Lecture and Video Presentation: CBR projects in the world	
Weekend	Field trip to accessible facilities in Bangkok	
2 nd week:	PWD in the world	
2 1	Lecture: UN Standard Rules for Equalization of Opportunities	Discussion
2 2	Lecture : WHO's ICF	Discussion
2 3	Lecture: UN Convention on Children's right and Salamanca Declaration	Discussion
2 4	Lecture: IL movement and PWD's rights to live in the community	Discussion
2 5	Lecture: international organizations to support CBR	Discussion
Weekend	Visit to the DPI Asia-Pacific Regional Office	
3 rd week:	Identification of Needs	
3 - 1	Lecture: occurrence of disability and statistics	Discussion
3 - 2	Lecture : methods of survey of PWD population	Discussion

3 – 3	Lecture: special needs of children with disabilities	Discussion
3 – 4	Lecture: special needs of women with disabilities	Discussion
3 – 5	Lecture: method to identify needs of PWD	Discussion
Weekend	Visit to the DPI-Thailand (Council of Disabled People in Thailand)	
4 th week:	CBR Skill and Manual	
4 – 1	Lecture: CBR manual and its usage	Discussion
4 – 2	Lecture: planning of CBR program and division of responsibility	Discussion
4 – 3	Lecture: training of CBR worker	Exercise
4 – 4	Lecture: training of family and community	Exercise
4 – 5	Lecture: participation of PWD and their self-help group	Discussion
Weekend	Visit to Association of the Physically Handicapped in Thailand	
5 th week:	CBR Skill and Manual	
5 – 1	Lecture: awareness raising at community	Discussion
5 – 2	Lecture: child-to-child program	Discussion
5 – 3	Lecture: production of self-help devices and toys	Exercise
5 – 4	Lecture: income generation activities	Discussion
5 – 5	Lecture: maintenance of CBR worker's volition	Discussion
Weekend	Field visit to Income Generation Project of Thai Association of the Blind	
6 th week:	Management of Program	
6 – 1	Lecture: measures for community participation	Discussion
6 – 2	Lecture: role of public sectors	Discussion
6 – 3	Lecture: operation expenses	Discussion
6 – 4	Lecture: record, report and monitoring	Discussion
6 – 5	Lecture: government policy on disability	Discussion
Weekend	Field visit to Income Generation Project of Association of the Deaf	
7 th week:	Planning of Program	
7 – 1	Lecture: Strategic planning including vision, mission, objectives, and target	Discussion
7 – 2	Lecture: SWOT of program	Exercise
7 – 3	Lecture: meaning and importance of PWD's participation	Discussion
7 – 4	Lecture: comparison of various community-level activities	Discussion
7 – 5	Lecture: future of program	Discussion
8 th week:	Case Study	

8-1	Lecture and video presentation: introduction of model case and its background	
8-2	Group discussion: model case	
8-3	Lecture: solving problems	Role playing
8-4	Report: analysis of participant's program in comparison with case	
8-5	Orientation and preparation of the field visit	
9 th week:	Field Visit	
9-1	Discussion with representative of implementing organization including briefing on the project	
9-2	Home visit	
9-3	Discussion with CBR workers	Discussion with PWD's self-help group
9-4	Visit to an integrated school	
9-5	Visit to organizations supporting CBR prokect	
10 th week:	Program Evaluation	
10-1	Report: participant's comment on field visit	Discussion
10-2	Lecture: analysis of date	Discussion
10-3	Lecture: method of keeping record	Discussion
10-4	Lecture: evaluation index	Discussion
10-5	Lecture: analysis of input and output and monitoring	Exercise
11 th week:	Program for disabled children	
11-1	Lecture: promotion of integrated education	Discussion
11-2	Lecture: segregated educational system (special school/class, day-care center, residential institution)	Discussion
11-3	Lecture: role of parents	Discussion
11-4	Lecture: activities for severely disabled children	Discussion
11-5	Lecture: role of community	Discussion
12 th week:	Integration/Collaboration into/with Other Community Organization	
12-1	Lecture: service programs and institutions which can be utilized	Discussion
12-2	Lecture: effective collaboration with local health program	Discussion
12-3	Lecture: method to deepen community understanding	Discussin
12-4	Lecture: role of CBR committee and CBR worker for integration	Discussion
12-5	Case report: excluding stigma	
13 th week:	Participatory Rural Appraisal (PRA)	
13-1	Lecture: effectiveness of PRA and empowerment	Discussion
13-2	Lecture: mapping	Exercise
13-3	Lecture: venn diagram and ranking	Exercise

1 3 - 4	Lecture: plan of action based on PRA outcome	Exercise
1 3 - 5	Exercise: making action plan applying PRA	
Weekend	Making individual action plan	
14 th week:	Concept of CBR	
1 4 - 1	Lecture: CBR and social development	Discussion
1 4 - 2	Lecture: CBR and independent living (IL) movement	Discussion
1 4 - 3	Lecture: CBR and IL movement	Discussion
1 4 - 4	Report: individual action plan	
1 4 - 5	Evaluation of the training program	Closing

Budget

ITEMS OF EXPENSES

I Invitation

Expenses

1 Air Fare (Round Trip)

1.1 Overseas participants(12 from Asia & the Pacific)

1.2 Overseas lecturers (4 from Sri Lanka etc.)

2 Transportation (Airport to/from Hotel)

2.1 Overseas participants(12 from Asia & the Pacific)

2.2 Overseas lecturers (4 from Sri Lanka etc.)

3 Accommodation

3.1 Overseas participants

3.2 Overseas lecturers

4 Per-Diem (for meals, etc.)

4.1 Overseas participants

5 Medical Care

	Baht/per	Person	Night/Day	Baht
1.1	40,000	12		480,000
1.2	40,000	4		160,000
2.1	500	12		6,000
2.2	500	4		2,000
3.1	1,500	12	98	1,764,000
3.2	1,500	4	25	150,000
4.1	300	12	100	360,000
	1,500	12		18,000
Sub-total:				2,940,000

II Training

expenses

1 Honoraria for external lecturers

1.1 Thai lecturers

1.2 Overseas lecturers (4 from Sri Lanka etc.)

	Baht/per	Person	Night/Day	Baht
1.1	1,500	5		7,500
1.2	900	4	15	54,000

2	Employment Fee				
2.1	Interpreters	15,000	2	35	1,050,000
2.2	Sign Language Interpreters	8,000	2	35	560,000
2.3	Secretariat staff	1,000	2	50	100,000
3	Transportation				
3.1	Rental of vehicles	2,500	2	70	350,000
3.2	Field Trip	2,500	2	5	25,000
4	Expendable Supplies				
4.1	Photocopying services				30,000
4.2	Stationeries	1,000	12		12,000
5	Meeting expenses				
5.1	Training venue	200	12	70	168,000
5.2	Training facility	100		70	7,000
5.3	Opening Ceremony	500	30		15,000
5.4	Closing Ceremony	500	30		15,000
6	Printing				
6.1	GI	100	12		1,200
6.2	Certificates	100	12		1,200
7	Expensable Supplies				
7.1	Textbook	500	12		6,000
8	Others				
8.1	Communication				30,000
8.2	Course Report	200	20		4,000
Sub-total:					2,435,900

The above I & II: Grand total: 5,375,900

per time

* 5,375,900 per time × 3 times = **16,127,700**

Terms of Reference of Short-term Expert

CBR Experts

1. Qualification:

- 1) Academic degree: not required specifically
- 2) Experience: 3 years of continued experience in the field of assignment
- 3) Language level: not specifically required. If necessary, interpretation is provided.
- 4) Remarks: The expert is preferably from JICA or NGOs.

2. Job description

- 1) Location / office: APCD
- 2) Proponent: JICA
- 3) Period: 1 week to 3 months.

3. Detailed Activity

3.1 The selected experts will prepare training programs from resources both within and outside the Center, with due attention given to the concept of full participation of disabled persons.

3.2 They will select the trainees based on recommendations made by disability-related organizations, particularly self-help groups of PWDs.

3.3 They will provide a barrier-free environment to the trainees and consult extensively with the Development Expert for Disability Program.

3.4 They will have an ability to share models of CBR with the trainees.

3.5 They will ensure the trainees to understand the human rights of disabled persons in context of disability related international norms and standards.

L-3 Training Program of Peer Counsellor (DRAFT)
Refresher Course for Training Program of IL Leaders

Staff

1 st year	
Facilitator/Resource Person	4 peer counsellors (PC) from Japan
Assistant	2 PWD who completed the JICA-sponsored Thai IL Workshop or the Center's IL Training Program
2 nd year	
Facilitator/Resource Person	3 PC from Japan 1 PWD who completed the JICA-sponsored Thai IL Workshop or the Center's IL Training Program
Assistant	2 PWD who completed the JICA-sponsored Thai IL Workshop or the Center's IL Training Program
3 rd year	
Facilitator/Resource Person	2 PC from Japan 2 PWD who completed the JICA-sponsored Thai IL Workshop or the Center's IL Training Program
Assistant	2 PWD who completed the JICA-sponsored Thai IL Workshop or the Center's IL Training Program
4 th year and afterwards	
Facilitator/Resource Person	1 PC from Japan 3 PWD who completed the JICA-sponsored Thai IL Workshop or the Center's IL Training Program
Assistant	2 PWD who completed the JICA-sponsored Thai IL Workshop or the Center's IL Training Program

Participant: 12 PWD who completed who completed the JICA-sponsored Thai IL Workshop or the Center's IL Training Program, and their personal assistant if necessary

Duration: 2 weeks

Content

	Morning	Afternoon
1 st week		
1 1	Orientation and self-introduction	Lecture and discussion: confirming the role of PC
1 2	Sharing: participant's own experience	
1 3	Lecture and exercise: role playing:	
1 4	Lecture : mutual support	Exercise
1 5	Lecture: leadership and empowerment	Exercise
Weekend	attending a seminar on peer counselling as resource person	

2 nd week:		
2 1	Exercise: assertive training	
2 2	Lecture: mutual trust	Exercise
2 3	Exercise: various oppression and discharge of feeling	
2 4	Lecture: pattern and contraction	Exercise
2 5	Lecture: scar and rebirth	Exercise
2 -- 6	Closing	

Budget

ITEMS OF EXPENSES

I Invitation Expenses

- 1 Air Fare (Round Trip)
 - 1.1 Overseas lecturers (4 from Japan)
 - 1.2 Personal assistants for lecturers
- 2 Transportation (Airport to/from Hotel)
- 3 Accommodation
 - 3.1 Overseas lecturers and their PA
 - 3.2 Thai participants and their PA
- 4 Per-Diem (for meals, etc.)
 - 4.1 Thai participants
- 5 Medical Care

Baht/per	Person	Night/Day	Baht
40,000	4		160,000
40,000	2		80,000
500	4		2,000
1,500	4	7	42,000
900	12	14	151,200
300	12	14	50,400
300	12		3,600
Sub-total:			489,200

II Training expenses

- 1 Honoraria for external lecturers
 - 1.1 Thai lecturers
 - 1.2 Overseas lecturers (4 from Japan.)
- 2 Employment Fee
 - 2.1 Interpreters
 - 2.2 Sign Language Interpreters
 - 2.3 Secretariat

Baht/per	Person	Night/Day	Baht
1,500	2	10	3,000
900	4	5	18,000
15,000	2	7	210,000
8,000	2	7	112,000
1,000	1	7	7,000

staff				
3 Transportation				
3.1 Rental of vehicles	2,500	2	12	60,000
3.2 Field Trip	2,500	2	2	10,000
4 Expendable Supplies				
4.1 Photocopying services				10,000
4.2 Stationeries	1,000	12		12,000
5 Meeting expenses				
5.1 Training venue	400	12	12	57,600
5.2 Training facility	200		12	2,400
5.3 Opening Ceremony	500	30		15,000
5.4 Closing Ceremony	500	30		15,000
6 Printing				
6.1 GI	100	12		1,200
6.2 Certificates	100	12		1,200
7 Expensable Supplies				
7.1 Textbook	500	12		6,000
8 Others				
8.1 Communication				10,000
8.2 Course Report	200	20		4,000
			Sub-total:	554,400

The above I & II: **Grand total: 1,043,600**
per time

* 1,043,600 per time × 2 times = **2,087,200**

Terms of Reference of Short-term Expert

Peer counselling experts

1. Qualification:

- 1) Academic degree: not required specifically
- 2) Experience: 3 years of continued experience in the field of assignment
- 3) Language level: not specifically required. If necessary, interpretation is provided.
- 4) Remarks: The expert is preferably from JICA or NGOs.

The expert should have disability.

2. Job description

- 1) Location / office: APCD
- 2) Proponent: JICA
- 3) Period: 1 week to 3 months.

3. Detailed Activity

- 3.1 The selected experts will organize the training program from resources both within and outside the Center
- 3.2 They will implement training programs in peer counseling as course leader and resource person in close cooperation with the Development Expert for Disability Program.
- 3.3 They will select the trainees based on the recommendations made by self-help groups.
- 3.4 On behalf of the trainees, especially those with severe disabilities, they will request the Center provide a barrier-free environment.
- 3.5 They will serve as role models for disabled persons living independently in community.
- 3.6 They will ensure the trainees to understand the philosophy of independent living in the context of disability related international norms and standards

L-4 Training Program for Staff Persons of Self-help Organization of Disabled Persons (DRAFT)

Resource Persons/Trainers

Leader: 2 PWD from DPI

Lecturer: 15 persons from relevant organizations/ institutions. The priority will be given to PWDs.

Participant

12 PWD who can bring their own personal assistants/interpreters if necessary

Duration

3 months (14 weeks)

Curriculum

Day	Morning	Afternoon
1st Week: Orientation/Introduction		
1 1	Orientation, Self-Introduction,	Sharing of motivation for participation
1 2	Lecture and Discussion: UN convention of PWD's human rights and its background	
1 3	Lecture: Philosophy of self-help	Lecture and Video Presentation: Global self-help movement
1 4	Lecture and Video Presentation: History of PWD's self-help movement	
1 5	Lecture and Discussion: Social development and social welfare	
Weekend	Survey of physical accessibility in Bangkok	
2nd Week: PWD in the World		
2 1	Lecture and Discussion: UN Standard Rules for Equalization of Opportunities	
2 2	Lecture and Discussion: WHO's classification of disablement, ICF	
2 3	Presentation of Report: Self-help organization of participant's country (continued)	
2 4	Presentation of Report: Self-help organization of participant's country	
2 5	Lecture and Exercise: Independent living movement and self-help organization	
Weekend	Visit to the DPI Asia-pacific Regional Office	
3rd Week: Peer Counselling and IL Skill Training Program		
3 1	Lecture: Peer counselling and IL skill training program	Role Playing
3 2	Lecture: Measure of ice-breaking	Group Wourk: "New and Good"
3 3	Lecture: Qualification of peer counsellor	Listening training
3 4	Lecture and Discussion: IL skill training and methods for implementation	
3 5	Exercise: Peer counselling	
Weekend	Exchange with the Association of the Physically Handicapped of Thailand	
4th Week: Tasks of Self-help Organization		
4 - 1	Lecture and Discussion: Self-help organization and its crucial role	
4 - 2	Lecture: IL manual and its usage	Exercise
4 - 3	Lecture: Organizational development and peer counselling	Role playing

	4 -- 4	Lecture and Discussion: Limitation of individual's activity and merits of organizational movement	
	4 -- 5	Lecture and Discussion: Administrative works required as organization at minimal level	
	Weekend	Visit to Thailand Association of the Blind	
5 th Week: Lobbying			
	5 -- 1	Lecture and Discussion: Needs of lobbying	
	5 -- 2	Lecture and Discussion: Measures to participate in the decision-making process	
	5 -- 3	Visit to the Office for the Committee of Rehabilitation of Disabled Persons	
	5 -- 4	Lecture and Discussion: Organization of a study circle for lobbying and preparation of materials	
	5 -- 5	Lecture and Discussion: Needs of cross-disability movement	
	Weekend	Visit to the Association of the Deaf in Thailand	
6 th Week: Organization and Management			
	6 -- 1	Lecture and Discussion: Establishment of organization including board, structure and constitution	
	6 -- 2	Lecture and Discussion: Establishment of organization (office site, rental contract, social security, health insurance, and corporate/voluntary body)	
	6 -- 3	Lecture and Discussion: Plan of action	
	6 -- 4	Lecture and Discussion: Finance and book keeping (budget, financial report, accounting and	
	6 -- 5	Group work: Comparison of participants' organizations	
	Weekend	Visit to Association for the Mentally Retarded of Thailand	
7 th Week: Personnel Management, Information Management and Risk Management			
	7 -- 1	Lecture and Discussion: Employment and personnel management (recruitment, employment agency, training, reporting, communication, and advice)	
	7 -- 2	Lecture and Discussion: Employment and personnel management (resignation, working code, salary system, and personnel management and evaluation)	
	7 -- 3	Lecture and Discussion: Employment and personnel management (goal setting, terms of reference, competence and responsibility, and reward and punishment)	
	7 -- 4	Lecture: Information management and risk management (confidentiality and information processing)	Exercise
	7 -- 5	Lecture: Information management and risk Management (documentation, filing, cosigning system, and settlement of dispute)	Exercise
8 th Week: Planning, Management and Finance			
	8 -- 1	Lecture and Discussion: Planning and management (Basic concept for planning, revenue, and cost effectiveness)	
	8 -- 2	Lecture and Discussion: Planning and management (organization of meeting, public relations and presentation, and monitoring and evaluation)	
	8 -- 3	Lecture: Finance (making budget and financial report)	Exercise
	8 -- 4	Lecture: Finance (items of revenue and expenses)	Exercise
	8 -- 5	Lecture and Discussion: Finance (securing working capital)	
9 th Week: Accounting and Personnel Affairs			
	9 -- 1	Lecture and Discussion: Accounting (voucher, receipt, bill, and book keeping)	
	9 -- 2	Lecture: Organizational management in terms of financial data, and processing of subsidy)	Exercise
	9 -- 3	Lecture: Accounting control (journalizing, and computerizing accounting)	Exercise

	9 – 4	Lecture: Accounting control (various voucher, withholding, tax matters, and depreciation)	Exercise
	9 – 5	Lecture: Subsidy (application form, communication with funder, and reporting)	Exercise
10 th Week: Managerial Strategy and Program			
	1 0 – 1	Lecture and Discussion: Managerial strategy (public relations, and gathering and analysis of information on scheme and policy)	
	1 0 – 2	Lecture and Discussion: Managerial strategy (management based on vision and risk management)	
	1 0 – 3	Lecture and Discussion: Program (CBR)	
	1 0 – 4	Lecture and Discussion: Program (income generation)	
	1 0 – 5	Lecture and Discussion: Inclusion of marginalized groups (women with disabilities, children with disabilities and rural PWD)	
11 th Week: Event/Function			
	1 1 – 1	Lecture and Discussion: Clarification of objectives and target group, finance, and application for fund	
	1 1 – 2	Lecture: Planning	Exercise
	1 1 – 3	Lecture: Scheduling and letter of request (speaker, sponsor, co-organizer, and volunteer)	Exercise
	1 1 – 4	Lecture: Utilization of media, division of duties during preparation, and allocation of manpower)	Exercise
	1 1 – 5	Lecture: Division of responsibility on the day and evaluation after completion	Exercise
12 th Week: Personnel Management			
	1 2 – 1	Lecture and Discussion: Members of the board and principle of 51% PWD	
	1 2 – 2	Lecture and Discussion: Staff person with and without disabilities	
	1 2 – 3	Group Discussion: Comparison with sheltered workshop and volunteer's organization	
	1 2 – 4	Report of Group Discussion	Lecture: Management know-how and chain of command
	1 2 – 5	Exercise: Establishment of model organization	
13 th Week: Measures for Empowerment			
	1 3 – 1	Group Exercise: Planning of group trip to Pattaya and mapping of available local resources	
	1 3 – 2	Group Exercise: Planning of group trip to Pattaya and mapping of available local resources	
	1 3 – 3	Report of group trip plan	
	1 3 – 4	Lecture: Method of evaluation	Exercise
	1 3 – 5	Lecture and Discussion: Individual plan of action	
	Weekend	Completion of individual plan of action	
14 th Week: Conclusion			
	1 4 1	Individual Report and Discussion	
	1 4 2	Exercise: Group trip to Pattaya	
	1 4 3	Exercise: Group study on available resources	
	1 4 4	Coming back from Pattaya	Evaluation of Group Trip
	1 4 5	Evaluation of the Training Program	Closing

Budget

ITEMS OF EXPENSES

I Invitation Expenses

- 1 Air Fare (Round Trip)
 - 1.1 Overseas participants(12 from Asia & the Pacific)
 - 1.2 Overseas lecturers(15 from Asia & the Pacific)
 - 1.3 Personal assistants to participants
 - 1.4 Personal assistants to lecturers
- 2 Transportation (Airport to/from Hotel)
 - 2.1 Overseas participants and their PA
 - 2.2 Overseas lecturers and their PA
- 3 Accommodation
 - 3.1 Overseas participants and their PA
 - 2.2 Overseas lecturers and their PA
- 4 Per-Diem (for meals, etc.)
 - 4.1 Overseas participants
- 5 Medical Care

Baht/per	Person	Night/Day	Baht
40,000	12		480,000
40,000	15		600,000
40,000	10		400,000
40,000	8		320,000
500	12		6,000
500	15		7,500
1,500	12	98	1,764,000
1,500	15	5	112,500
300	12	100	360,000
1,500	12		18,000
Sub-total:			4,068,000

II Training expenses

- 1 Honoraria for external lecturers
 - 1.1 Thai lecturers
 - 1.2 Overseas lecturers(15 from Asia & the Pacific)
- 2 Employment Fee
 - 2.1 Interpreters
 - 2.2 Sign Language Interpreters
 - 2.3 Secretariat staff
- 3 Transportation
 - 3.1 Rental of vehicles
 - 3.2 Field Trip
- 4 Expendable Supplies

Baht/per	Person	Night/Day	Baht
1,500	2		3,000
900	15	3	40,500
15,000	2	35	1,050,000
8,000	2	35	560,000
1,000	2	50	100,000
2,500	2	70	350,000
2,500	2	5	25,000

4.1 Photocopying services				30,000
4.2 Stationeries	1,000	12		12,000
5 Meeting expenses				
5.1 Training venue	200	12	70	168,000
5.2 Training facility	100		70	7,000
5.3 Opening Ceremony	500	30		15,000
5.4 Closing Ceremony	500	30		15,000
6 Printing				
6.1 GI	100	12		1,200
6.2 Certificates	100	12		1,200
7 Expensable Supplies				
7.1 Textbook	500	12		6,000
8 Others				
8.1 Communication				30,000
8.2 Course Report	200	20		4,000
	Sub-total:			2,417,900

The above I & II: **Grand total:** **6,485,900**
per time

* 6,485,900 per time × 3 times = **19,457,700**

Terms of Reference of Short-term Expert

Organizational management experts for self-help organization of disabled persons

1. Qualification:

- 1) Academic degree: not required specifically
- 2) Experience: 3 years of continued experience in the field of assignment
- 3) Language level: not specifically required. If necessary, interpretation is provided.
- 4) Remarks: The expert is preferably from JICA or NGOs.

Priority is given to persons with disabilities.

2. Job description

- 1) Location / office: APCD
- 2) Proponent: JICA
- 3) Period: 1 week to 3 months.

3. Detailed Activity

3.1 The selected experts will organize the training program from resources both within and outside the Center.

3.2 They will implement a training program for the efficient and effective management of self-help groups as course leader and resource person in close consultation with the Development Expert for Disability Program.

3.3 They will select the trainees based on the recommendations made by self-help groups.

3.4 On behalf of the trainees, especially those with severe disabilities, they will closely cooperate with the center to provide a barrier-free environment.

3.5 They will serve as a role model for disabled persons managing their self-help groups with strong leadership

3.6 They should have information on the global self-help movement of disabled persons.

3.7 They will ensure the trainees to understand the human rights of disabled persons in the context disability related international norms and standards.

別添 5－3

シリントン王女
「誕生日のお言葉」の新聞記事

タイ日刊紙マティチョン 2002年4月2日
シリントン王女の障害者支援に関する業績紹介記事
アジア太平洋障害者センターにかかる部分の意訳

いままでの障害者支援の業績に対しフランクリンローズベルト賞を受賞した。その賞金5万ドルについて障害者支援に役立てるためラチャスダ基金に寄贈しようとしていたが、タイ政府が日本と共同でアジア太平洋障害者センターを設立しようとしているのを知り、そちらを支援しようと思っている。現在はタイと日本からなる委員会が申請するのを待っている。



นายคิรี วัฒนวิธย์ มอชราชบัณฑิต

วโภาสสมเด็จพระรัตนราชสุมาลา สมณบรมราชูปถัมภ์ เสด็จพระราชดำเนินทรงประกอบพิธีราชาภิเษก พระราชทานถ้อยแถลงอย่างเป็นทางการเมื่อ 24 ธันวาคม 2544...



สมเด็จพระเทพรัตนราชสุดาฯ สยามบรมราชกุมารี พระมหากษัตริย์คุณุณาธิคุณต่อคนพิการ

ราชินีนาถทรงใช้เวลาออกไปท่าหน้าห้องอาหาร คนพิการ ทรงอ่านข่าวคนพิการด้วยพระหัตถ์ถึง...

(Stony deal) ได้เสร็จเรียบร้อยพร้อมกันสองข้าง ยังคงต้องมีเด็กสอนการพูด สอนเป็นทีละคนอย่าง...

ทางการ ในการช่วยเหลือผู้พิการระดับอยู่ทุกระดับอยู่ ที่น่าวิตกมากที่สุดคือเด็กเล็กก่อนวัยเรียน...

กับเด็กในวัย 10 ปีขึ้นไป ให้เข้ามา ส่งเด็กนักเรียนที่จะออกจากพระตำหนัก...



เริ่มพระราชทานหนังสือ เมื่อเดือนกุมภาพันธ์...

ศาสตราจารย์เกียรติคุณ น.พ.พนงิจ อมาตยกุล

別添 5 - 4

カンボディアニーズ調査報告書

アジア太平洋障害者センター短期調査

カンボディア現地調査報告書

障害当事者ニーズ調査

2002年4月22日

アイシーネット株式会社

カンボディア障害当事者アンケート調査結果

アイシーネット株式会社 元沢 秋子

1. 調査日程 2002年4月2日(火)～6日(土)

2. 調査概要

2.1 関係機関訪問

政府団体、非政府団体など障害者支援関係機関を訪問し、アジア太平洋障害者センター（以下センターと略）及びその活動について説明を行った。各団体責任者はセンターの活動趣旨を理解すると共に活動への関心及び現状ニーズに伴うセンターへの期待について意見を述べ、積極的に協力する姿勢を見せている。

訪問先団体活動概要

団体名	面会者	センターへのコメント概要（詳細は議事録参照）
Ministry of Social Affairs, Labour, Vocational Training and Youth Rehabilitation (MOSALVY)	Mr.Touch Samon (Deputy Director-General), Mr. Keo Kim Thun (Deputy Director, Rehabilitation Department), 林民夫 (JICA 専門家、MOSALVY 配属・大臣顧問)	<ul style="list-style-type: none"> ◇ 人材育成 - 最も重要と考え、中でも研修は最優先課題である。官民の人材を対象とし、政府機関のための研修コース、NGO 職員の研修コースが用意されるべき。例) 障害者の職業訓練指導者のための情報技術に係る研修コース。また、指導者育成の必要についてもニーズが高いと考える。また、県やコミュニティーレベルで働くソーシャルワーカーは数・質ともに不足している。 ◇ 情報普及 - インターネットへのアクセスが希少である現状から、アクセス促進、及び国内での情報普及についても支援すべき。 ◇ MOSALVY では、障害関連データベース構築を検討中、技術・資金が不足しているため、センターを通じてデータベース運営管理等を支援してもらうことを希望している。 ◇ 関係機関の連携 - 力のある一部の団体・障害当事者だけでなく、不利な立場におかれている障害者について視野に入れるべき。
Disability Action Council (DAC) (半官半民の国内調整協議会)	Mr.Ouk Sisovann (Executive Director), Mr. Pen Mony	<ul style="list-style-type: none"> ◇ センターへの関心 - センターがカンボディア障害者に齎す成果が具体的に見えてこないという懸念はあるが、障害分野の地域センターという発想は高く評価し、基本的にはセンターの構想を支持する。 ◇ DAC 理事会、カンボディアの障害分野関係者に対しセンターの活動に関する説明を行い、情報普及に積極的に協力する。
National Center for Disabled Persons (半官半民の障害者センター)	Mr. Yi Veasna (Executive Director)	<ul style="list-style-type: none"> ◇ 一定の国に留まらず、広範囲に及び裨益効果があることを期待している。そのためにも戦略計画、雇用する人材などは特に留意して行うことを提案したい。 ◇ 会員制の委員会を設置することを提案したい。アジア太平洋諸国の主要メンバーで構成し、バンコクにおいて定期的な会議を行う。各メンバーは自国においてセンターの情報普及を行う。 ◇ カンボディアに対し、何が期待されているのかを明確にして欲しい。それは資金的なものか、または人材であるのかが明確でない。 ◇ 各国より優先とされるニーズ調査を行い、各国の傾向を調査すべきではないか。センターの活動と比較調査することを勧める。

Cambodia Disabled People's Organization (障害当事者団体)	Mr. Son Songhak (Executive Manager), Mr.Srey Savy (Finance and Furnishing Manager)	<ul style="list-style-type: none"> ◇ CDPO は個人登録の会員制度を通じて、障害者の完全参加と平等を促進している。メンバーは障害当事者のみである。DPI に加盟している。2000 年現在、1,253 名が登録している。2000 年まで、会員から年会費 2,000 リエル (71 円；2002 年 4 月現在 100 円=3,088 リエルで換算) を徴集、以降は寄付金ベースで徴集している。 ◇ CDPO は NCDE,DAC などの設立にも貢献している。 ◇ 今回開催した障害当事者を集ったワークショップには Mr.Savy が積極的に貢献、回収された質問表の翻訳に貢献すると共に、CDPO 会員の参加を促し計 45 名がワークショップに参加。
Action on Disability and Development	Mr. Srey Vanthou (Director)	<ul style="list-style-type: none"> ◇ ADD はカンボディア国内における人材の育成、コミュニティー開発を促進している。能力開発、運営ノウハウの習得を目指し、特に当事者グループの支援には力を入れている。 ◇ これまで当事者グループ支援連盟を 3 つ設立し、同連盟は当事者グループの運営、ネットワークの促進を行っている (調査団は内 1 つを訪問)。 ◇ センターの活動を理解、現地で開催された障害当事者を招集したワークショップにおいてはスタッフが参加。 ◇ CDPO と連携業務を行っている。
Rehab Craft Cambodia	Ms.Pascale Laurent (Director)	<ul style="list-style-type: none"> ◇ 職員の研修の場はなく、今年新設された AAC(Atticism Association in Cambodia)が専門家の研修を行うために現在動いているので、同機関と連携を取っていきたいと考えている。 ◇ センターに対する貢献としては、何が求められているか、またどんな利益があるのかによる。RCC は手工芸品を作成し、カンボディア国内で販売しているが、タイのマーケットには関心があるので同分野で何らかの情報が得られることを期待。
Kien Klean Vocational Training Center for the Disabled	Ms.Huoy Socheat (Director), Ms. Michiko Shizawa (AAR Japan)	<ul style="list-style-type: none"> ◇ 障害当事者に対し 1 年間の職業訓練 (テレビ、ラジオ修理、裁縫、バイク修理) を実施、必要に応じて識字教育を提供している。現在約 50 名の生徒が訓練を受けている (平均年齢 18~35 歳)。1993 年から現在まで、353 名が同訓練を終了している。 ◇ センターの活動には関心があるが、訓練生、若しくは講師がセンターで研修を受ける意向があるかは資金支援がどこまで受けられるかによる。 ◇ DAC との協力が積極的に行われている。Director は ACC の会員、定期的な会合に参加している。
Handicap International (HI)	-	-
在カンボディアタイ大使館	Mr.Kosit Chatpainboon, Minister	<ul style="list-style-type: none"> ◇ センターへ関心 - センターの活動には大変期待している。カンボディアなど新 ASEAN 加盟国は、貧困状態が著しく、障害者分野も同様、支援を必要としている。タイ政府が本件に対し、可能な限り最大限の支援をしていくことは確かである。 ◇ ビザ発行 - タイへの入国ビザ発行には通常 2 日かかるが、目的が明確で保障された入国には何ら問題はない。

2.2 質問表調査

2.2.1 質問表

質問表は現地語に翻訳され、また視覚障害者に対しては点字で作成された質問表が配布された。質問表については、添付資料 1 参照。

2.2.1 質問表の配布：94 名から回収

1) 障害者支援団体

CDPO、DAC、HI などプノンペンに事務所を構える障害者支援団体に対し、JICA カンボディア事務所を通じて配布。プロジェクトに参加する地方の障害者に対しても質問表を配布した。但し、カンボディア現地において修正が加わったため、回収された一部質問表回答については使用の可否を検討中（今回の集計については除外）。

2) 障害当事者ワークショップ開催

障害者支援を行う非政府団体で活動する障害当事者、及び団体に所属するメンバーを集めたワークショップを開催し、計 68 名の障害当事者が参加。ここでは、質問調査の実施、さらにグループ別に分かれたワークショップ形式のディスカッションを行い、障害当事者自身の日常における問題点、ニーズ調査を実施（添付資料 2 参照）。

特に、障害者及び彼等の団体のエンパワメントに直結する手話及び英語の学習、雇用へのアクセスが制限されていくことから生じる経済的問題、技術向上を目的とする雇用に直結した技術習得へ意思、さらに情報へのアクセスが欠如している現状から同分野における支援を期待する声も多くあった。また、参加者の多くはプノンペン、若しくは近郊に在住していること、さらに支援団体で活動する者が多いことから、農村地域の障害者に比べ生活水準も比較的高いものと考えられるものの、実際は経済的に問題を抱えていた。同ワークショップで収集された質問表に加え、さらに NGO 団体責任者を通じて、プロジェクトに参加する農村地域及び都市の貧困層に属する障害者に対する質問表調査も実施された。

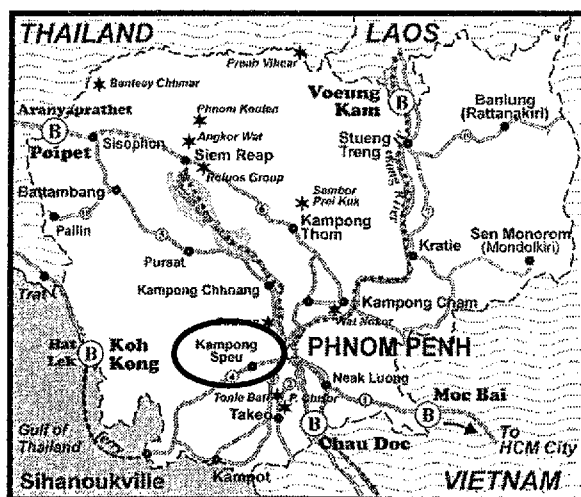
2.3 当事者支援グループ訪問 - 農村地域の現状調査：ADD 活動地域訪問

カンボディア現地調査最終日においては、草の根レベルで活動する当事者団体メンバーを訪問し、地域における現状及びニーズを確認することができた。Action on Disability and Development (ADD)プロジェクトサイト Kom Pong Speu 県（地図参照）Krang Ampur 村（35～36 世帯）で活動する当事者支援グループを訪問、メンバーと意見交換を行いグループの活動、農村における障害当事者の生活、及び問題点における聞き取り調査、質問表調査を実施。同グループは、メンバー 12 名（男性 4 名、女性 8 名）、多くが高齢者または児童であり非識字者であった。質問表は 5 名から回収。Krang Ampur 村は、首都プノンペンか

ら1時間30分程の距離といった都市近郊地域であることから、カンボジア農村地域全体のニーズというよりも、農村地域における一現状として有益なデータが収集できたといえる。今後、農村地域における障害者の現状、問題点、支援団体の活動ネットワークを明確にする意味において、調査を実施することはセンター活動の波及効果を考慮する点からも重要な意味をもつといえる。

2.3.1 Kampong Speu 基礎情報

ここでは、今回調査団が訪問した当事者支援グループが活動する Kampong Speu 県について紹介する。



Canby Publications Information

<http://www.canbypublications.com/maps/travovermap.htm>

1) 行政区分

No. of Districts	8
No. of Communes	89
No. of Villages	1,319

世帯数: 114,959 (25.6%が女性が世帯主)

2) 人口

合計	598,882 人
男性	287,392 人
女性	311,490 人

Population Density: 85 per Km²

Urbanization Rate: 6.9%

3) 識字率

平均	男性	女性
59.8%	69.9%	50.7%

*統計資料の一部は 1998 年国勢調査資料

(カンボディア王国政府計画省)

<http://www.locomo.org/cambodia/province/Kampong%20Speu.htm>

4) 失業率

	平均	男性	女性
失業率	2.8%	2.9%	2.7%

移民: 149,453 人 (25.0%県の総人口の 25.0%)

カンボディア障害当事者ニーズ調査アンケート集計結果

単純集計 (*分析結果は後日報告)

1.あなた自身について

問1. 年齢

10歳 以下	10-19 歳	20-29 歳	30-39 歳	40-49 歳	50-59 歳	60-69 歳	70歳 以上	不明
0人	15人	31人	30人	11人	5人	1人	0人	1人

	人数	%
10～19歳	15	16
20～29歳	31	33
30～39歳	30	32
40～49歳	11	12
50～59歳	5	5
60～69歳	1	1
不明	1	1
計	94名	100

問2. 性別

男性	女性	未回答	合計
52人 (55%)	32人(34%)	10人 (11%)	94人 (100%)

問3. あなたの障害は何ですか

身体	視覚	聴覚	その他	不明	合計
53人 (56%)	8人 (8.5%)	8人 (8.5%)	16人 (17%)	9人 (10%)	94人 (100%)

問4. 障害者手帳を持っていますか

持っていない	持っている	未回答	合計
66人 (70%)	14人 (15%)	14人 (15%)	94人 (100%)

問5. 何級ですか (問4「持っていない」と回答した人についても解答あり)

1級	2級	3級	4級	合計
2人	5人	8人	4人	19人

問 6. いつ障害者になりましたか

10歳以下	10-19歳	20-29歳	30-39歳	40-49歳	50-59歳	不明	合計
35人	16人	18人	11人	5人	2人	7人	94人

2.あなたの暮らしについて

問 1. 一緒に暮らしているのはあなたを含めて何人ですか

2人	3人	4人	5人	6人	7人	8人	9人	9人以上	未回答
4人	8人	12人	21人	15人	8人	11人	5人	8人	2人

問 2. 一緒に暮らしている人

夫・妻	父親	母親	息子・娘	義理の娘・息子	兄弟・姉妹	祖母	孫	その他の家族や親戚	友人・知人	使用人	その他
34人	54人	39人	9人	36人	11人	8人	7人	6人	8人	3人	13人

問 3. どこで暮らしていますか

自分の家（一戸建て）	自分の家（アパート）	貸家	貸しアパート	社宅・公務員住宅	学校や職場の寮	施設	未回答	その他
46人	19人	16人	0人	1人	0人	1人	1人	10人

問 4. 住居について困っていることがありますか

家が狭い	家賃やローンが高い	家がなかなか借りられない	立ち退きを求められている	浴室や他の設備が不便	階段や段差が不便	特に問題はない	その他	未回答
46人	7人	3人	9人	6人	11人	19人	12人	10人

問 5. 生活に必要なお金はどこから得ていますか

自分の給与	家の事業	不動産からの収入	家族みんなが稼いで	家族や知人、友人からもらう	家族や友人、知人から借金をする	政府の年金	その他	未回答
31人	0人	0人	28人	9人	4人	7人	15人	11人

3.あなたの障害について

問1.リハビリテーションを受けたことがありますか

ある	ない	未回答
46人	41人	7人

問2. (問1「ある」と回答した人に対して) どこでリハビリテーションを受けましたか

病院	施設	地域のワーカーから	その他	未回答
18人	18人	3人	2人	5人

問3. 暮らしていくのにどんな助けが必要ですか

食事をする	排泄をする	入浴をする	着替えをする	移動する
14人	4人	6人	7人	21人

字を書く	文字を読む	話をする	話を理解する	何の助けも要らない	未回答
21人	6人	7人	10人	29人	17人

問4. 必要な助けは主に誰がやってくれますか (一つだけ回答)

全部自分でやる	祖父母	父母	兄弟	親戚	友人	隣人	使用人	その他	誰もいなくて困っている	未回答
8人	28人	19人	5人	19人	2人	24人	2人	7人	2人	25人

4.あなたの普段の生活について

問1.暮らしに必要なサービス(例えば、車いす、白杖、手話通訳)は、提供されていますか

提供されている	されていない	未回答
40人	46人	8人

問2. (問1「提供されている」と答えた人に対して)

白杖	車いす	クラッチ*	その他
24人	7人	-	8人

問3. (問1「されていない」と答えた人に対して) 必要なものがありますか

ある	ない	未回答
22人	20人	4人

問4. (問3「ある」と答えた人に対して) 何ですか

白杖	車いす	クラッチ*	その他	未回答
4人	0人	-	4人	1人

その他：例) 補聴器

問5. 一人で外出できますか

できる	できない	未回答
78人	8人	8人

問6. (問5「できない」と答えた人に対して) 何故ですか (集計中)

問7. 仕事や学校、遊びなどの目的でどれくらい外出しますか

ほとんど毎日	一週間に 3-5日	一週間に 1-2日	月に1-2日	ほとんど出かけない	未回答
32人	1人	14人	10人	25人	12人

問8. 外出するときどのようなことで困りますか

付き添ってくれる人がいない	道が歩きにくい	バスに乗りにくい	バスの表示が分からない
5人	12人	10人	18人

交通費にお金がかかる	人の視線が気になる	人が多くてぶつかりそうで怖い	困らない	未回答	その他
4人	28人	21人	12人	16人	13人

問9. 平日の昼間はどこで過ごしますか

学校	職場	施設	自分の家	その他	未回答
18人	24人	19人	40人	22人	7人

問10. 自由時間は何をしてすごしますか (主にしていることいくつかでも回答)

休養	家事の手伝い	家族との団らん	友人とのつき合い	テレビやラジオ
9人	48人	10人	8人	20人

仕事や学校のための勉強	趣味やスポーツ	買い物	地域活動や障害者運動	自由時間がない
20人	18人	4人	15人	8人

何もしていない	その他	未回答
3人	7人	6人

問11. 近所の人とはどのようなつき合いをしていますか

会ったとき あいさつす る	世間話をす る	一緒に遊ぶ	地域活動を 一緒にする	宗教行事を 一緒にする	よく家に来 て世話をし てもらおう	よく一緒に 食事をする
33人	25人	28人	34人	32人	22人	21人

その他	未回答
5人	2人

問10 日常的な相談をするのは誰ですか (いくつでも回答して下さい)

一緒に暮らし ている家族や 親戚	一緒に暮らし ていない家族 や親戚	障害を持つ友 人や知人	障害のない友 人や知人	近所の人	行政の職員
63人	21人	52人	39人	31人	21人

民間の障害者 団体の職員	学校の先生	相談できる人 がいない	誰にも相談し ない	その他	未回答
39人	19人	0人	0人	5人	9人

5. 医療

問1. 日常的に医療的ケア（投薬、洗浄など）が必要ですか（集計中）

問2. 障害に起因することで医者にかかっていますか

かかっていない	病院に通っている	自分の家で治療している	入院している	その他	未回答
44人	8人	6人	0人	22人	14人

6. 仕事（*集計中）

7. 障害者団体

問1. 障害者団体に活躍していますか

加入していない	会員だが活躍していない活動している	その他	未回答
18人	56人	1人	19人

問2.（問1「会員だが活躍していない」「動している」と回答した人に対する質問）どのような団体ですか

親睦団体	自助団体	権利擁護	スポーツ団体	その他	未回答
2人	3人	7人	14人	8人	35人

8～9. オープン形式の質問については現在集計中

（8. 今一番楽しいことは何ですか、9. 今一番困っていることはなんですか、10. 将来）

11. 調査票記入者

問1. 誰が調査票に記入しましたか

本人が自分一人で	本人の意見を聞いてまわりの人が	本人の意向を考えながらまわりの人が	その他	未記入
17人	1人	43人	29人	11名

アンケート集計結果とりまとめ

今回調査の対象となった96名の障害者の内、45名はプノンペン在住の¹CDPO(Cambodian Disabled People's Organization)の会員であり、同団体会員数の約4分の1を占める。現時点におけるアンケート調査回答から以下の傾向が見られる。

- 20～40歳までが回答者の60%を占める
- 全体の半分以上が身体に何らかの障害をもっている
- 回答者の内、障害者手帳を持っていないと回答した人は全体の7割を占め、また複数回答も多くみられたことから明確な障害の重度を知らない人が多くいることが明確。
- 37%が10歳以下に障害者になったと回答、ワークショップでの議論からも障害者になった原因として先天性、または戦時下における傷害が原因で障害者となった人が概ねを占めると考えられる。
- 同居人の数は、平均で平均5.8人、両親と同居している人は全体の3～5割で、既婚者も全体の3割と比較的大家族で生活している傾向にある。
- 住居について困っていることについての質問では、「家が狭い」と回答した人が約50%、特に困っていないが20%という結果が出ており、住居における特定問題点は見られない。
- リハビリテーションを受けたことがあると回答した人は全体の約半分(主に病院や施設において提供されている)。
- 暮らしに必要なサービスは提供されていないと回答した人が約半分にもかかわらず、サービスの必要性を感じていないと回答した人も比較的多く見られる。必要であると回答した中には補聴器と回答した人が若干名あった。
- 外出の際に生じる問題として、最も回答が多かったのは、「人の視線が気になる」の28人である。これはカンボディア市民における障害者の受け入れ、理解を促進するための啓蒙活動が十分になされていないことが原因と考えられる。また、平日の日中はどこで過ごすかという問いに対して「自宅で過ごす」と回答した人が40人と最も多く、記述の問題に付随した重要視されるべき問題点と捉えることができる。

¹ 1995年に設立された障害当事者団体。

添付資料 1

障害当事者に対するニード調査

1 あなた自身について

1-1 年齢

110-19歳 220-29歳 330-39歳 440-49歳 550-59歳
660-69歳 770歳以上

1-2 性別 1男性 2女性

1-3 あなたの障害は何ですか 1身体 2視覚 3聴覚 4知的 5その他 ()

1-4 障害者手帳を持っていますか 1持っている 2持っていない



何級ですか (1一級 2二級 3三級 4四級)

1-5 いつ障害者になりましたか

110-19歳 220-29歳 330-39歳 440-49歳 550-59歳
660-69歳 770歳以上

2 あなたの暮らしについて

2-1 一緒に暮らしているのはあなたを含めて何人ですか

1一人 2二人 3三人 4四人 5五人 6六人 7七人 8八人 9九人
10九人以上

2-2 一緒に暮らしているすべての人にOをつけて下さい

1夫または妻 2父親 3母親 4息子または娘 5息子の妻または娘の夫
6兄弟姉妹 7祖父母 8孫 9その他の家族や親戚 10友人や知人
11使用人 12その他 ()

2-3 どこで暮らしていますか

1自分の家(一戸建て) 2自分の家(アパート) 3貸家 4貸しアパート
5社宅または公務員住宅 6学校や職場の寮 7施設 8その他 ()

2-4 住宅について困っていることがありますか

1家が狭い 2家賃やローンが高い 3家がなかなか借りられない
4立ち退きを求められている 5浴室や他の設備が不便 6階段や段差が不便
7その他 () 8特に問題はない

2-5 生活に必要なお金はどこから得ていますか

1自分の給与 2家の事業 3不動産からの収入 4家族みんなで稼いで
5家族や知人、友人からもらう 6家族や友人、知人から借金する
7政府の年金 8その他 ()

3 あなたの障害について

3-1 リハビリテーションを受けたことがありますか 1 ある 2 ない

↓
1 病院で 2 施設で 3 地域のワーカーから 4 その他 ()

3-2 暮らしていくのどんな助けが必要ですか

1 食事をする 2 排泄をする 3 入浴をする 4 着替えをする 5 移動する
6 字を書く 7 文字を読む 8 話をする 9 話を理解する 10 何の助けもいらない

3-3 必要な助けは主に誰がやってくれますか。一つだけ O をつけて下さい

1 全部自分でやる 2 祖父母 3 父母 4 兄弟 5 親戚 6 友人 7 隣人
8 使用人 9 その他 () 10 誰もいなくて困っている

4 あなたの普段の生活について

4-1 暮らしに必要なサービス (例えば、車いす、白杖、手話通訳) は、提供されていますか。

1 提供されている

↓
1 白杖 2 車いす 3 クラッチ

2 されていない

↓
必要なものがありますか 1 ある 2 ない

↓
何ですか 1 白杖 2 車いす 3 クラッチ

4 手話通訳 5 その他 ()

4-2 一人で外出できますか 1 できる 2 できない

↓
何故ですか ()

4-3 仕事や学校、遊びなどの目的でどれくらい外出しますか

1 ほとんど毎日 2 一週間に3-5日 3 一週間に1-2日
4 月に1-2日 5 ほとんど出かけない

4-4 外出するときどのようなことで困りますか

1 付き添ってくれる人がいない 2 道が歩きにくい 3 バスに乗りにくい
4 バスの表示が分からない 5 交通費にお金がかかる 6 人の視線が気になる
7 人が多くてぶつかりそうで怖い 8 その他 ()
9 困らない

4-5 平日の昼間はどこで過ごしますか

1 学校 2 職場 3 施設 4 自分の家 5 その他 ()

4-6 自由時間は何をしてすごしますか。主にしていることいくつかでも O をつけて下さい

1 休養 2 家事の手伝い 3 家族との団らん 4 友人とのつき合い

- 5 テレビやラジオ 6 仕事や学校のための勉強 7 趣味やスポーツ 8 買い物
9 地域活動や障害者運動 10 自由時間がない 11 その他 ()
12 何もしていない

4-7 近所の人とはどのようなつき合いをしていますか

- 1 会ったときあいさつする 2 世間話をする 3 一緒に遊ぶ
4 地域活動を一緒にする 5 宗教行事を一緒にする
6 よく家に来て世話をしてもらう 7 よく一緒に食事をする
8 その他 ()

4-8 日常的な相談をするのは誰ですか。いくつでも〇して下さい

- 1 一緒に暮らしている家族や親戚 2 一緒に暮らしていない家族や親戚
3 障害を持つ友人や知人 4 障害のない友人や知人 5 近所の人
6 行政の職員 7 民間の障害者団体の職員 8 学校の先生 9 その他 ()
10 相談できる人がいない 11 誰にも相談しない

5 医療

5-1 日常的に医療的ケア（投薬、洗浄など）が必要ですか

- 1 必要 2 必要ではない



- 1月に1回 2月に2-3回 3週に1回 4週に2-3回 5月に3-5回
6 毎日1回 7 毎日2回 8 毎日3回 9 毎日3回以上 10 その他 ()

5-2 障害に起因することで医者にかかっていますか

- 1 かかっていない 2 病院に通っている 3 自分の家で治療している 4 入院している
5 その他 ()

6 何の仕事をしていますか

1 何もしていない

a その理由

- 1 病気のため 2 高齢のため 3 働く場が見つからない 4 希望する仕事がない
5 通勤ができない 6 家事や育児のため 7 学校にいつているので
8 技術訓練中のため 9 働く必要がない 10 職場の設備が整っていない
11 職場が障害について理解していない

b どんな仕事がしたいですか（〇は二つまで）

- 1 自営業 2 一般企業で正規職員として働く 3 障害者の作業所で働きたい
4 臨時・パートとして自分の体力や時間に合った仕事がしたい

5 寮がついている所で働きたい 6 障害について理解のある職場で働きたい
7 その他 () 8 働く予定はない

2 仕事をしている

a 仕事の種類 1 自営業 2 家業 3 正規の職員・社員 4 障害者作業所
5 臨時・パート・アルバイト 6 内職 7 その他 ()

b 1ヶ月平均の収入 1 500未満 2 500-700未満 3 700-1,000未満
4 1,000-2,000未満 5 2,000-3,000未満
6 3,000-4,000未満 7 4,000-5,000未満
8 5,000-7,000未満 9 7,000-10,000未満
10 10,000以上

c 1ヶ月の平均実労働日 1 10日未満 2 10-15日未満 3 15-20日未満
4 20-25日未満 5 25日以上

d 今の仕事についてどのような不満や不安がありますか

1 収入が少ない 休みが少ない 2 勤務時間が長い 3 仕事が難しい
4 仕事の内容が合わない 5 自分の技術を活かせない 6 人間関係が難しい
7 特に不安や不満はない 8 その他
()

7 障害者団体に活躍していますか

加入していない 会員だが活躍していない 活動している



どのような団体ですか 1 親睦団体 2 自助団体 3 権利擁護
4 スポーツ団体 5 その他 ()

8 今一番楽しいことは何ですか

()

9 今一番困っていることはなんですか

()

10 将来

10-1 これからどんな生活がしたいですか

()

10-2 希望を実現するために必要なものがありますか ある ない
↓
()

11 誰が調査票に記入しましたか

- 1 本人が自分一人で
- 2 本人の意見を聞いてまわりの人が
- 3 本人の意向を考えながらまわりの人が

添付資料 2：ワークショップ参加者リスト (グループ A)

PWDs workshop at Phnom Pen
Place: Cambodiana Hotel
Time and Date: 8:30-12:00, 2002.04.05
(Draft)

Group A (Ms.Nakanishi): Name of the participants

Number	Name	Type of disability	Sex	Age	Present Job	Ideal Job	Current attempt
1.	-	Hearing impairment	F	45	Office Cleaner (CDPO)	Continue present work, also want to learn painting	Try to have a house for settlement.
2.	Sunor	Physical impairment	M	38	-	Work at factory or bodyguard	-
3. *	Sonnaler	Physical impairment	M	29	-	Work at garment factory Family own the land, and those income are mainly spent for daily expenses	Cannot find any methods to improve my skills
4.	Dy Na, Ressey Keo District, PP	Amputee	M	50	CDPO member	-	Look for the support from any organizations.
5.	Somary	Polio	F	30	-	-	-
6. *	Chumoan Socken	Polio	F	22	-	Computer trainer for PWDs	Learn computer at school, also trying to work hard
7.	Sunoi	Physical impairment	F	44	-	-	-
8.	Nop Sothia Toul Kok, District	Vision impairment	F	34	CDPO member	-	-
9.	Wan HOCKY	Polio	F	-	-	Flower shop owner, also to be house designer	Look for the support for studying

10.	Bonswei	Physical impairment	F			Work at CDPO and manage PWD work	Improve the skills
11.	Hospair	Physical impairment				Own the shop and selling some products	Look for the information provided by several organizations, also want to learn language
12.	Answi SOTY	Seeing impairment	M		Massage	Continue present work as a massager	Want to improve massage skill, but found the difficulty with present situation
13.	Intuvo	Seeing impairment	F		Massage	I have no regular job, so that I have limited income. I want to be a DJ. I am also learning business studies and try also improve massage skill	Lean appropriate knowledge to communicate to teach others
14.	Kim SOMONY	Physical impairment	M	34		Work at workshop	Learn how to repair TV at AAR
15.	Prom SAMOUN	Seeing impairment	M	33	Student (AAR)	I do not have job now, but I grow some vegetable with my family. I was policeman, and I now want to be repairman to fix TV or radio. I am learning those skills at AAR now.	
16.	Lab MON	Seeing impairment	M	29	Student (AAR)	I do also have the same problem with Mr. Prom. I want to be a motorcycle repairman	
17.	Lim SANG	Physical impairment	M	26	Rehab Craft (Administration Manager)		
18. *	Chek CHAN	Physical impairment	M	39	Rehab Craft (Fulltime, workshop)	Bodyguard	
19. *	Chan Sophap, Dong Kor, PP	Hearing impairment	F	20	CDPO member, Student (sign language)	Dress maker	Studying sign language
20.	Prep NARIN, Hearing Impair	Hearing impairment	F	22	CDPO, Sign language teacher	Continue present work as sign language teacher	Improve skills as teacher in sign language

21.	Hang KONG, Wat Phnom, PP	Hearing impairment	M	19	CDPO member	Waiter, selling noodle	Study hard
22.	Huy Buntry, Meanchey District, PP	Hearing impairment	M	23	Student	Raising animals such as poultry	Improve the capacity to learn more
23.	Eng Veng Srun, Takhmoa, Kandal	Hearing impairment	M	19	Selling rice	Repairman	Need to understand myself
24.	Kong Chamroeun, 7 Makara, PP	Hearing impairment	M	19	Construction worker	Work at shop as seller	Need to have skills
25.	Math SILA, Meanchey District, PP	Hearing impairment	M	20	CDPO member	-	-
26.	Nhim Sophara, 7 Makara, PP	Hearing impairment	M	19	CDPO, also working for the factory (carrying water products)	Manager	-

Q. Married: 11 people / 25

Q. The maximum number of children: 6 children (2 of them have 5 children).

Q. How many of them were ex-solider? : 5 people

Q. What do you do for living?: Part-time work, labour (5), Selling rice, garment factory, construction worker etc. (see above list for detailed information)

Q. Problems that they face: Economic problem is the most serious issue that they face. For instance, some of them have no regular job but only part-time jobs. One male who is ex-solider answered that after the mobilization, the government took his land away and only US\$200 was provided, nothing was provided after that. He is expecting any of the organizations to offer some works.

<Examples of each participant's issues and background: the detailed information will be provided in the report>

6.Chumoan Socken (22), Polio

I have no job, but I am now studying computer. I would suggest each of organization should provide appropriate training course. I am now trying to find those courses.

19. Chek CHAN, Hearing impairment

I want to learn the second language such as English, but I don't have enough time for studying because I work from Monday to Friday at full time. I live in far place from my office, which takes about 30-60 minutes depending on the traffic. There is one organization, which offer language course but they open 4-5 o'clock. I work till 5 O'clock so that I cannot attend this course.

20.Saphanp (20) Hearing impairment

I was born in Sihanoukville. My father died and mother was disappeared. I have one sister who is 8 years old and she is non-disable. Two of us were abandoned. When I was primary student I was touched and grasped my neck, and lost my hearing since that time. I lived with my relatives, but they were so violent, I was not happy at all. One man brought us in Phnom Pen city and fond the organization for me.