

Figure S4 Geology and Slope Collapse in Project Area

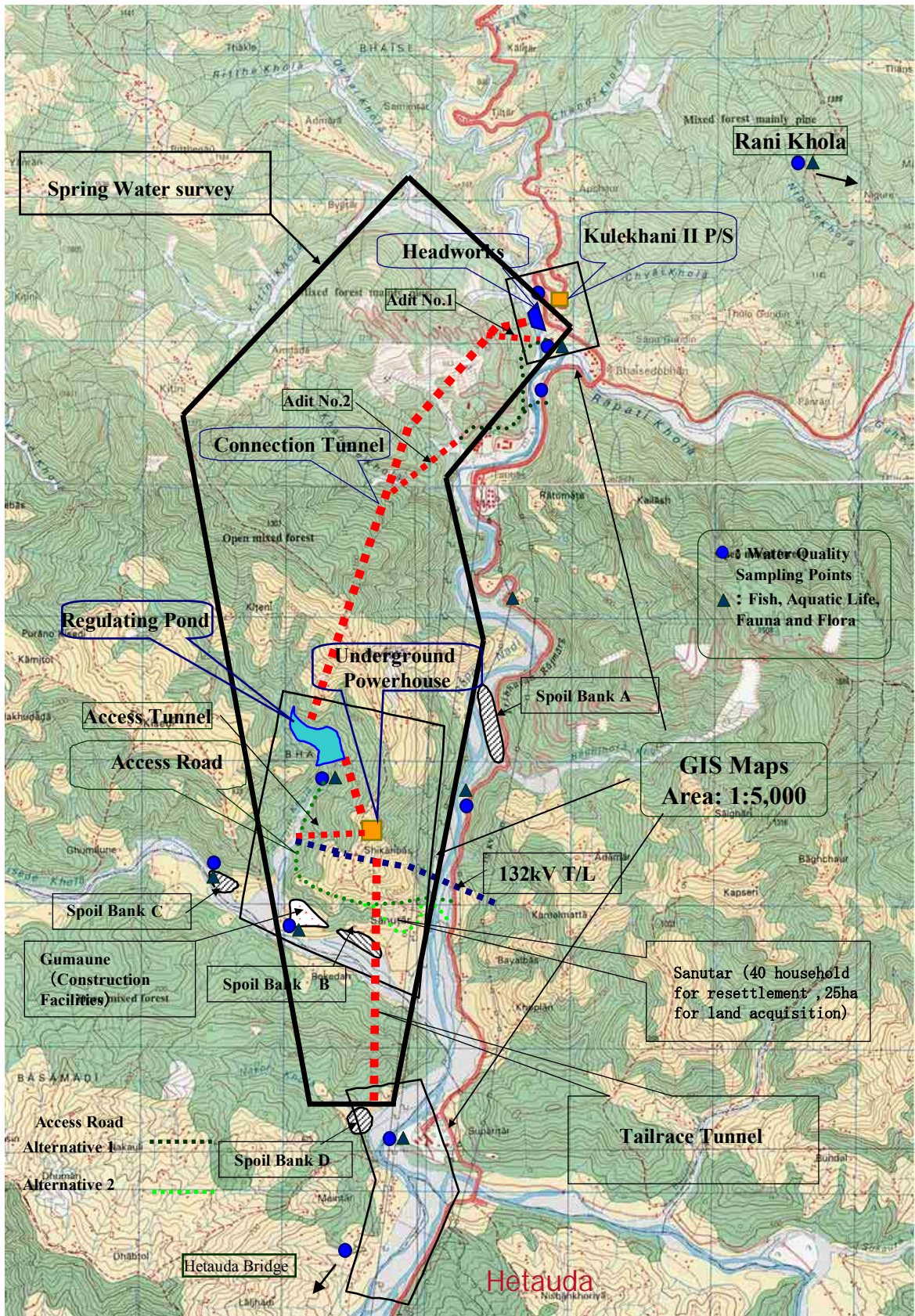


Figure S.5 Supplemental EIA Survey

Natural and Social Environment Map

Kulekhani III Hydropower Project - Map 2



- Legend**
- Traverse Point
 - Spot Height (Altitude in metre)
 - Index Contour (Altitude in metre)
 - Standard Contour
 - Half Interval Contour
 - Drainage Network
 - Land Slide Boundary
- Foot Prints**
- Building (without wall)
 - Building
 - School
 - Temple
 - Cowshed
- Local Infrastructures**
- ⊕ Water Mill
 - ⊕ Tap Stand
 - ⊕ Tower
 - ★ Stone Collection Site
 - Metalled Road
 - Unmetalled Road
 - Trail
 - Track
 - Transmission Line
 - Ropeway
 - Army Barrack
 - Bridge Foot
 - Bridge Road
 - Suspension Bridge
 - Canal/Pyne
 - Underground Canal
 - Causeway
 - Dam
 - Concrete Wall
 - Fish Trapping Area
 - Park
 - Tents
 - Project Affected Area
- Land Cover Type**
- Agricultural Land
 - Forest/Scrub
 - Grass Land
 - River
 - Rocky, Cliff Area & Others
 - Parcel Land
 - Parcel Land/Nos.

- References:**
- Topographical Maps, 1:25000, 1994
 - Topographical Maps (Disaster Prevention Master Plan in the Upper Rapti Basin), 1:5000, 1989
 - Topographical Maps (Nepal Electricity Authority), 1:5000, 1996
 - Cadastral Maps, 1:500

Date: November, 2002

Figure S.6 GIS MAP
S-F-7

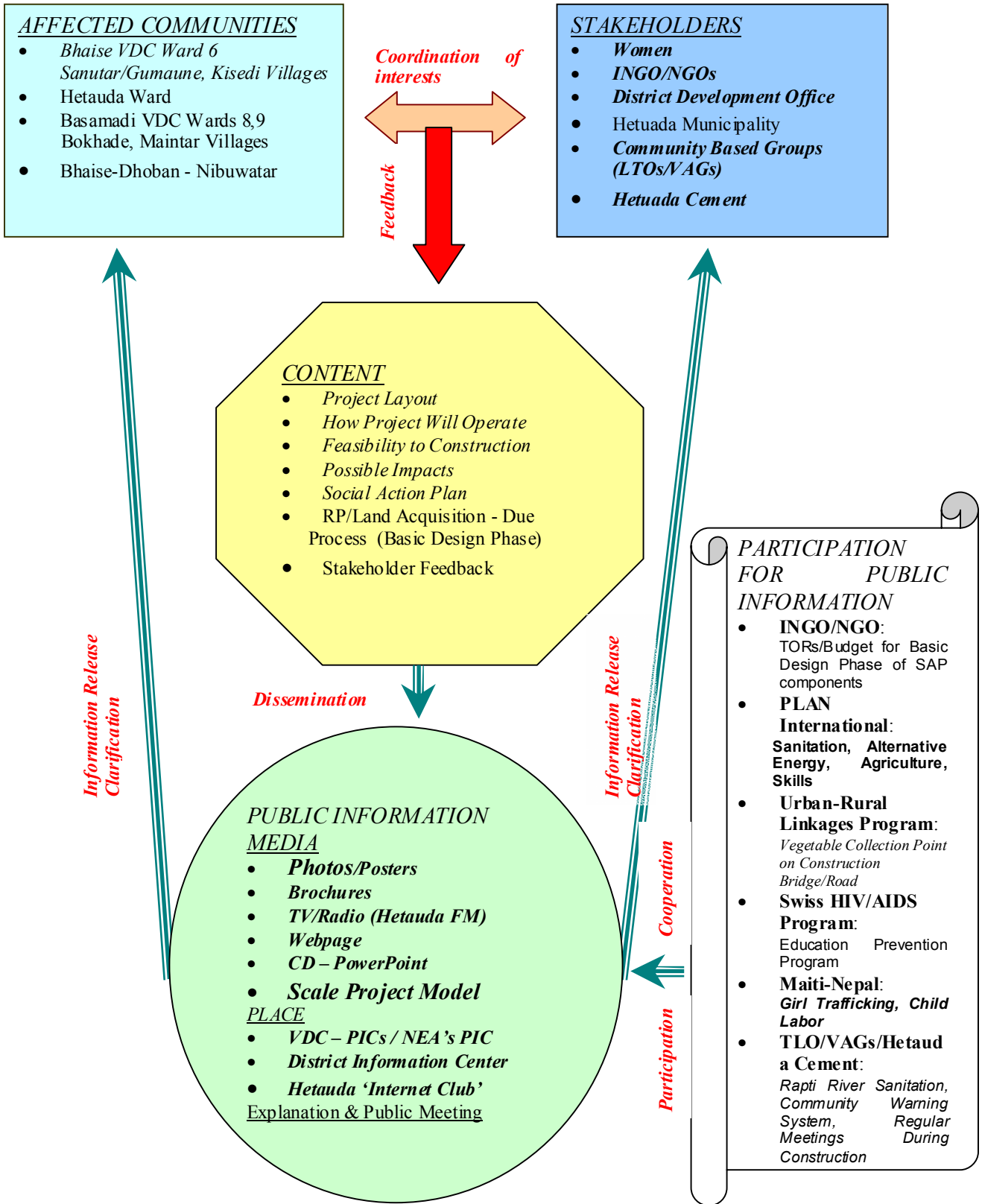


Figure S.7 Public Consultation System

S-F-9

Peak Load Sharing in FY2008

Forecasted Peak load: 762.3 MW

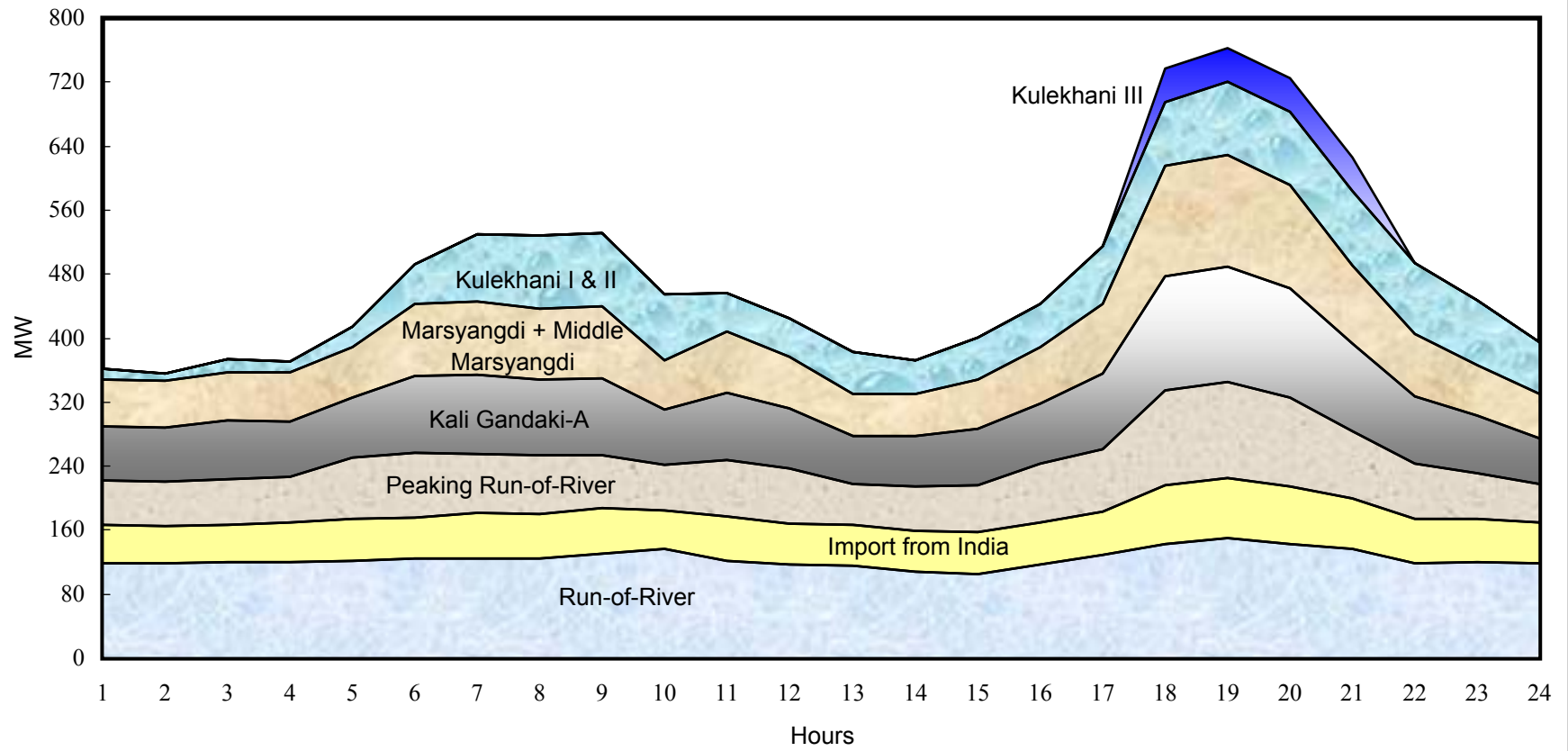


Figure S.8 Daily Load Curve and Power Supply in FY2008

S-F-10

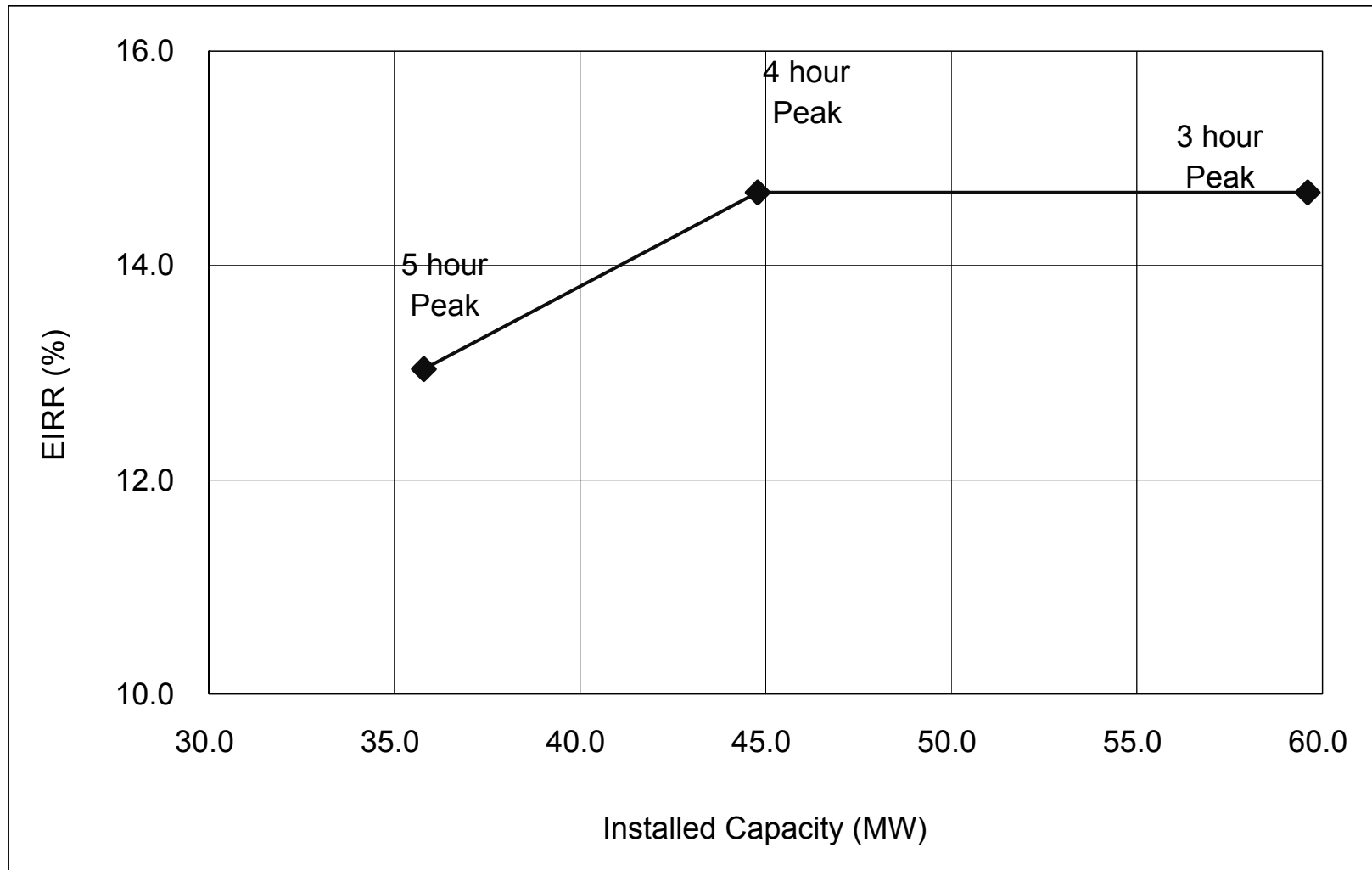


Figure S.9 Comparative Study of Project Scale

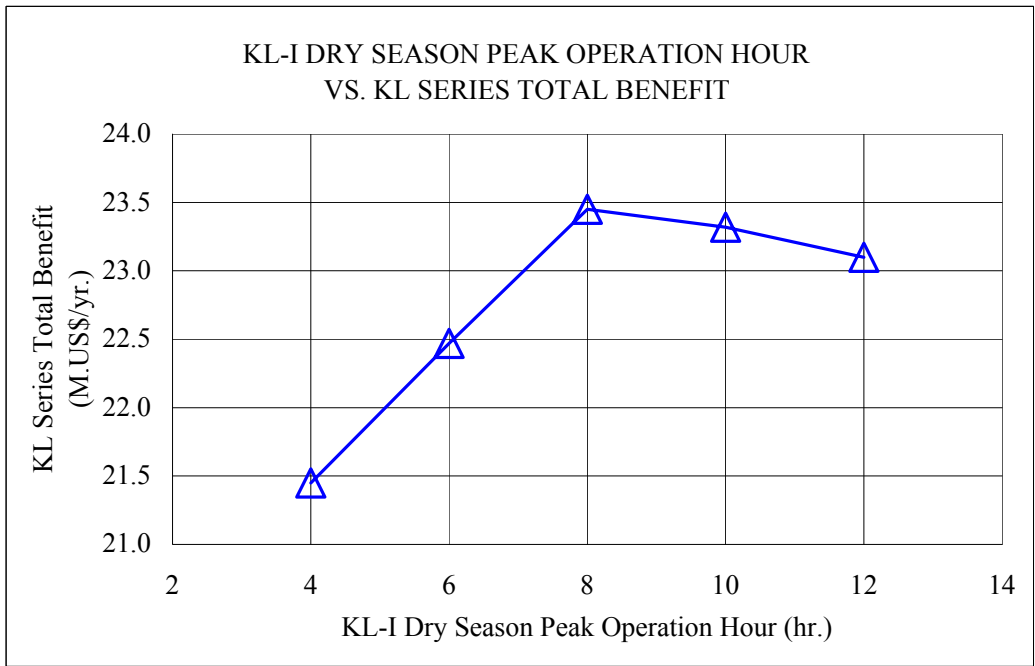
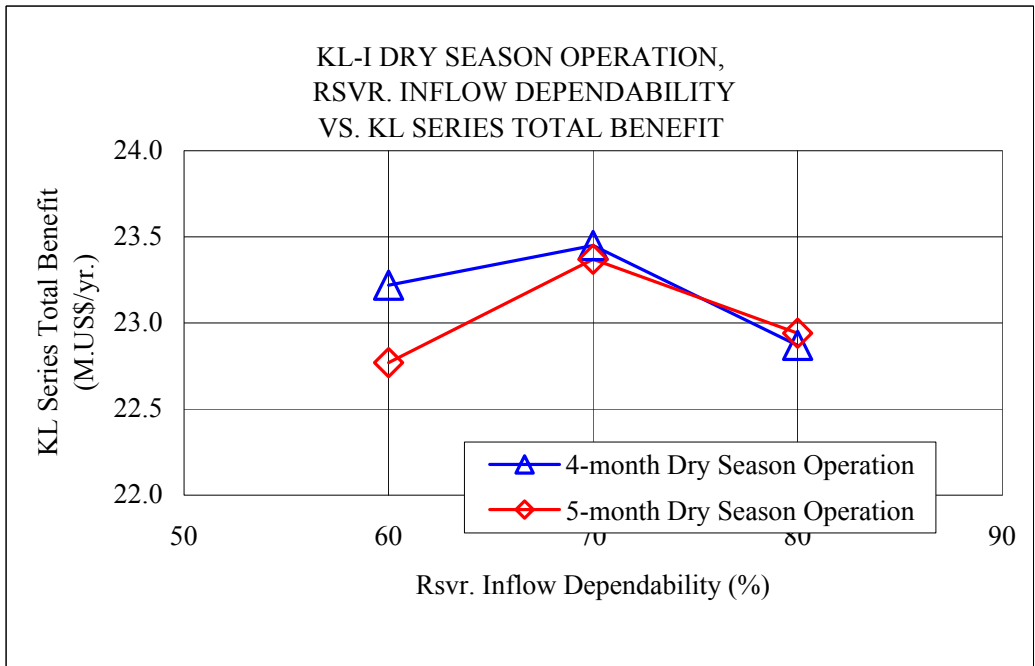
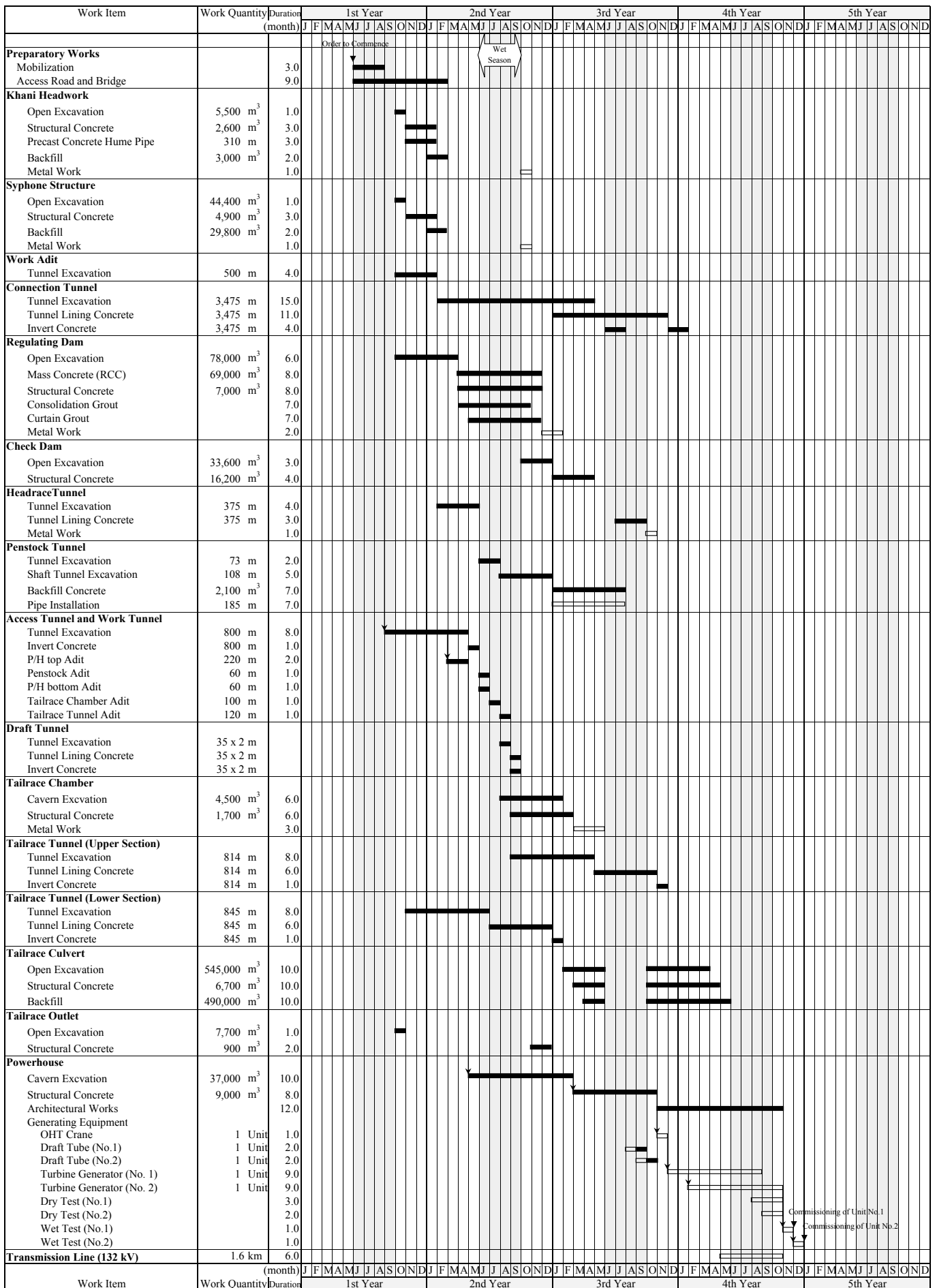


Figure S.10 Optimum Reservoir Operation



S-F-12

Figure S.11 Construction Schedule of Kulekhani III Hydropower Project