

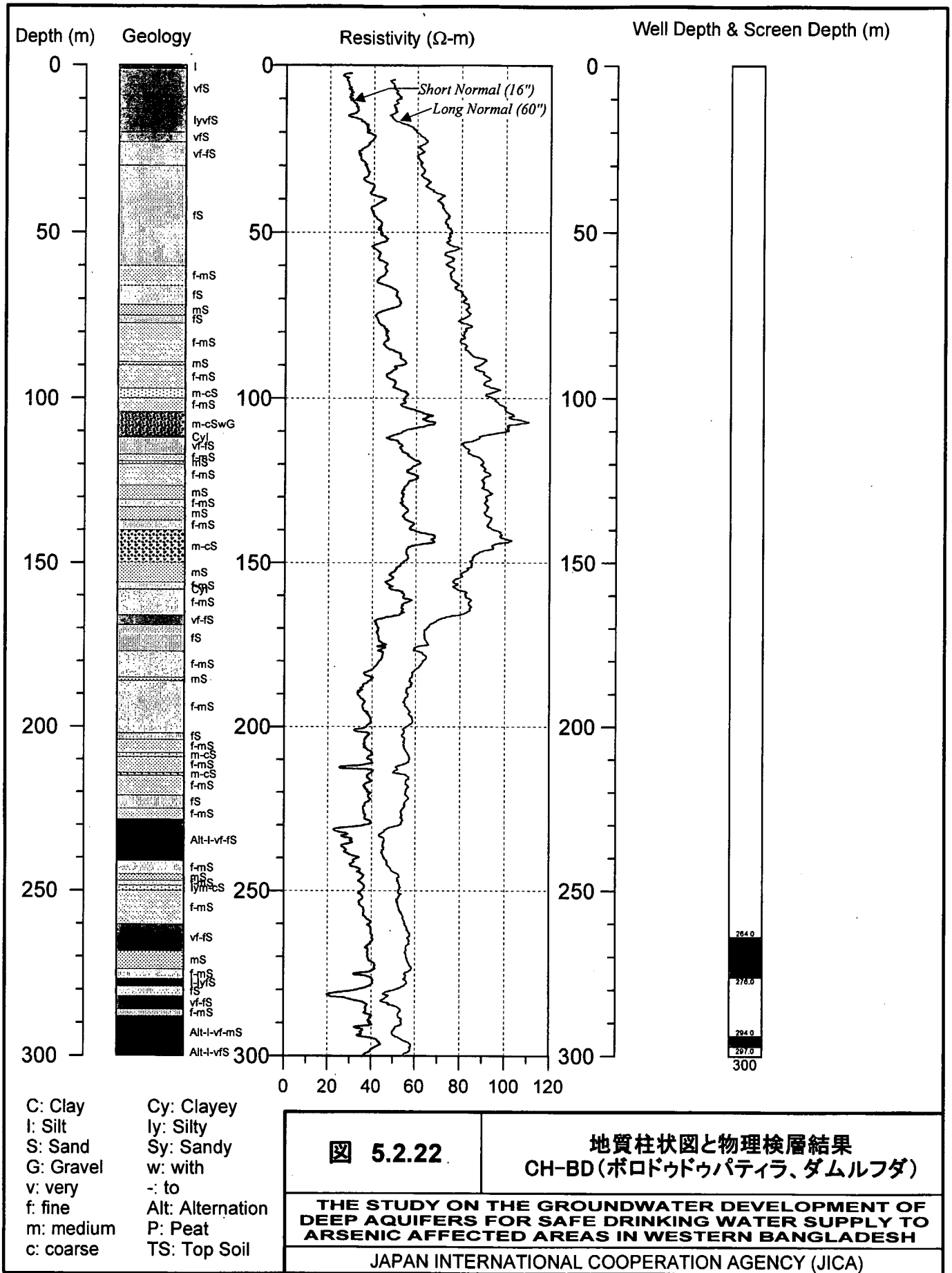
C: Clay
I: Silt
S: Sand
G: Gravel
v: very
f: fine
m: medium
c: coarse

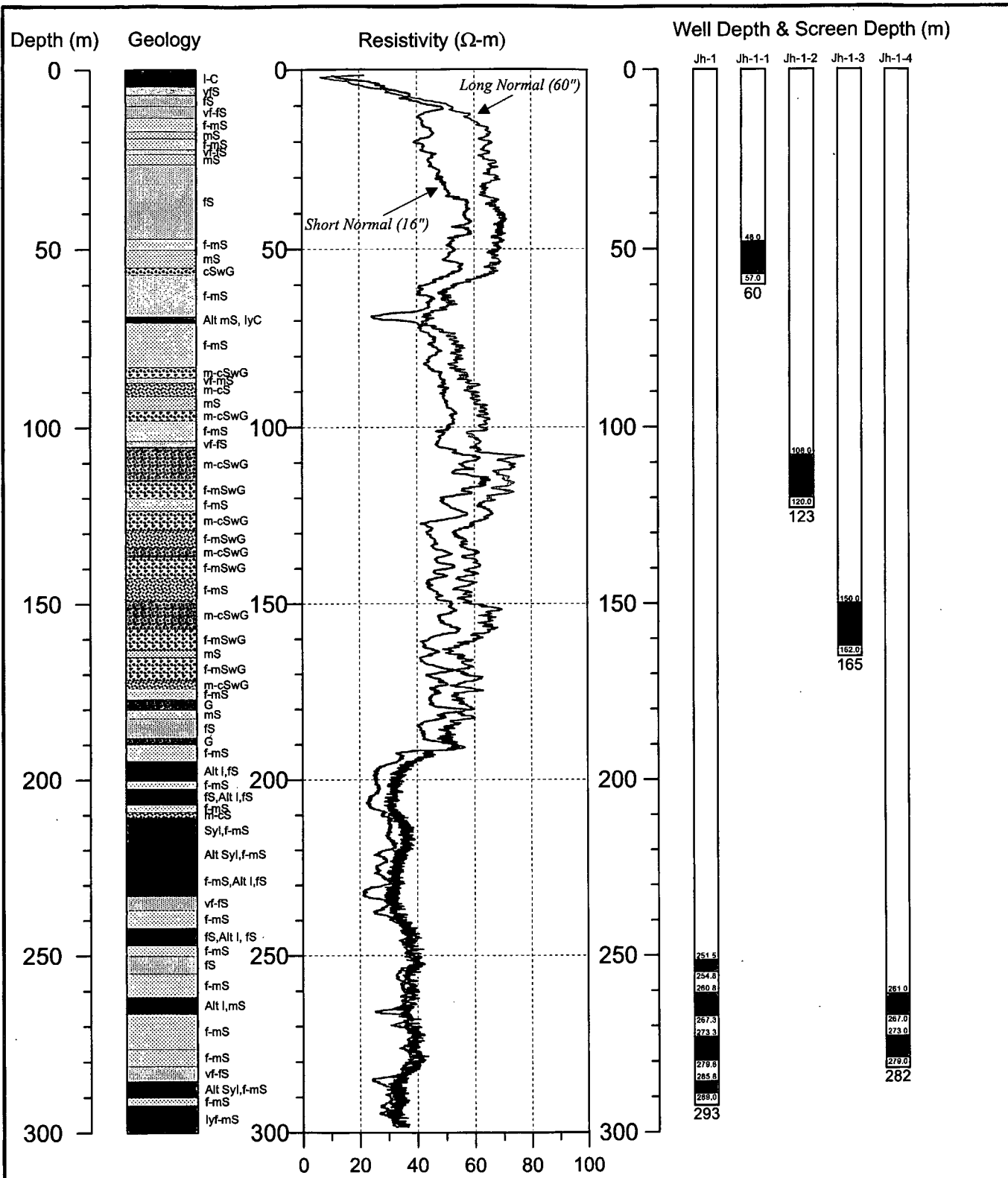
Cy: Clayey
Iy: Silty
Sy: Sandy
w: with
-: to
Alt: Alternation
P: Peat
TS: Top Soil

図 5.2.1 | **地質柱状図と物理検層結果**
CH-2(ガールズカレッジ、チュアダンガポルシャバ)

THE STUDY ON THE GROUNDWATER DEVELOPMENT OF DEEP AQUIFERS FOR SAFE DRINKING WATER SUPPLY TO ARSENIC AFFECTED AREAS IN WESTERN BANGLADESH

JAPAN INTERNATIONAL COOPERATION AGENCY (JICA)





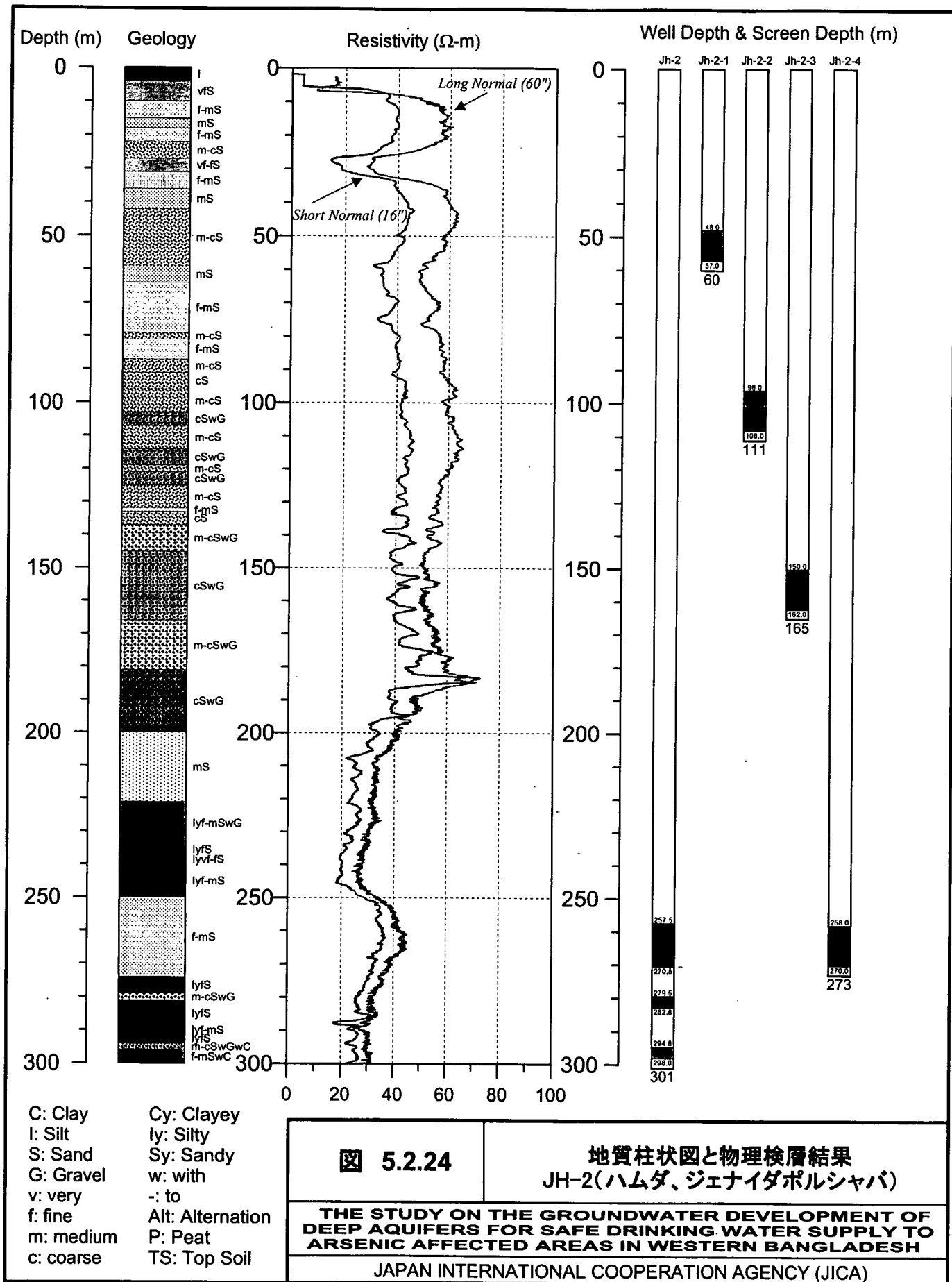
C: Clay
 I: Silt
 S: Sand
 G: Gravel
 v: very
 f: fine
 m: medium
 c: coarse

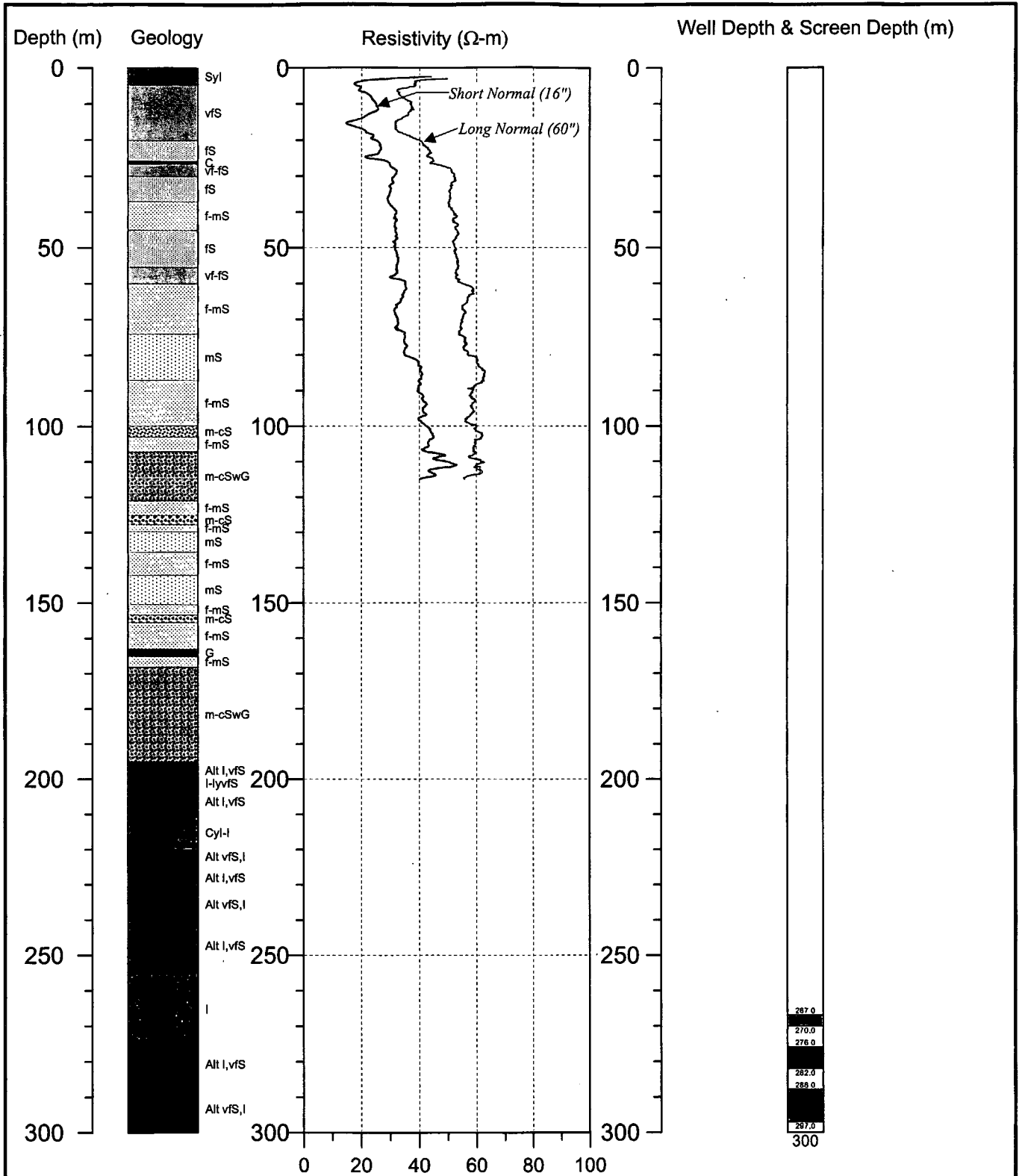
 Cy: Clayey
 ly: Silty
 Sy: Sandy
 w: with
 -: to
 Alt: Alternation

図 5.2.23 地質柱状図と物理検層結果
 JH-1(アラブプール、ジェナイダポルシャバ)

THE STUDY ON THE GROUNDWATER DEVELOPMENT OF DEEP AQUIFERS FOR SAFE DRINKING WATER SUPPLY TO ARSENIC AFFECTED AREAS IN WESTERN BANGLADESH

JAPAN INTERNATIONAL COOPERATION AGENCY (JICA)

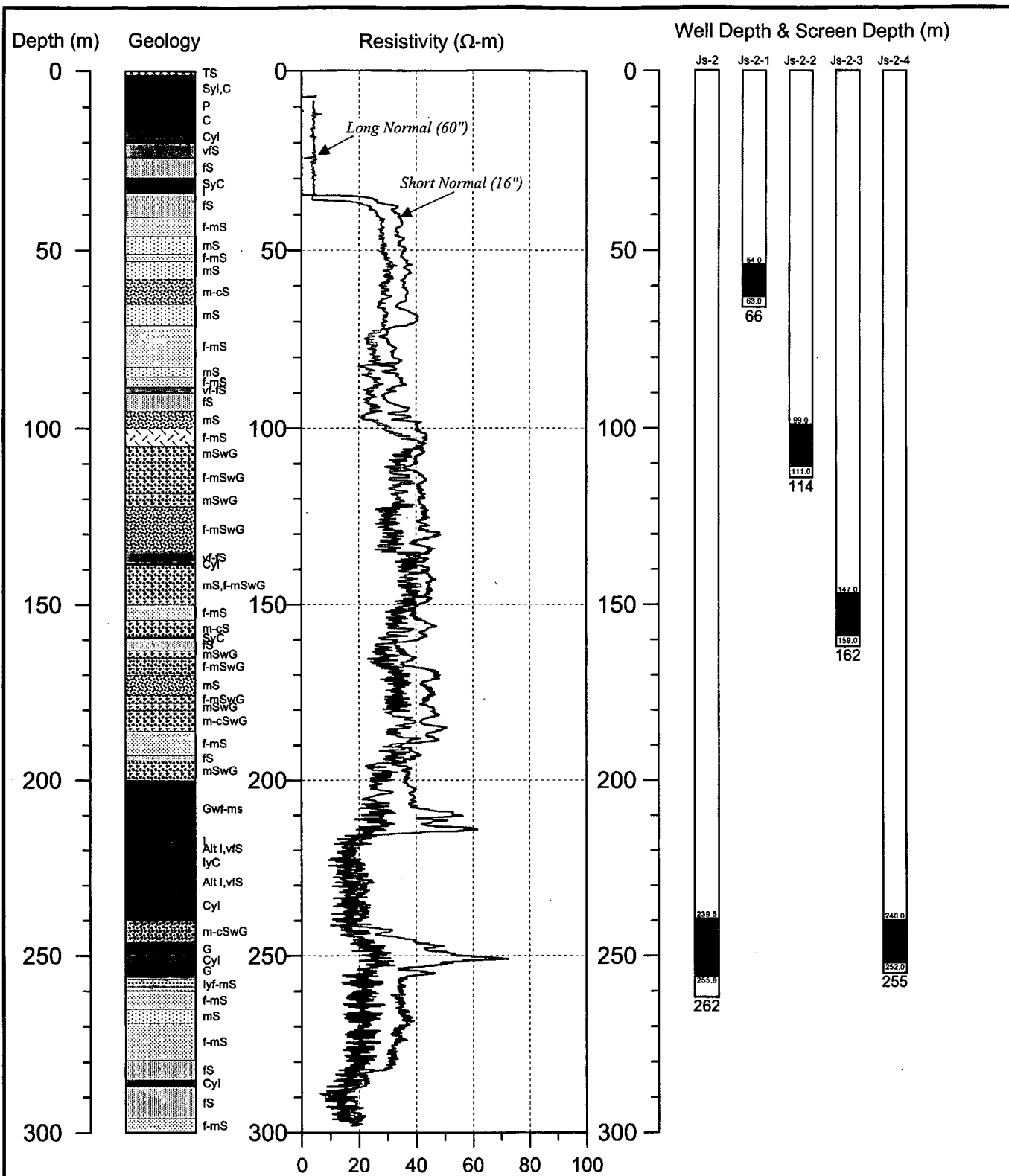




C: Clay
 I: Silt
 S: Sand
 G: Gravel
 v: very
 f: fine
 m: medium
 c: coarse

 Cy: Clayey
 ly: Silty
 Sy: Sandy
 w: with
 -: to
 Alt: Alternation
 P: Peat
 TS: Top Soil

図 5.2.25 地質柱状図と物理検層結果
 JH-KC(クリシュナチャンドラプール、モヘシュプール)
THE STUDY ON THE GROUNDWATER DEVELOPMENT OF DEEP AQUIFERS FOR SAFE DRINKING WATER SUPPLY TO ARSENIC AFFECTED AREAS IN WESTERN BANGLADESH
 JAPAN INTERNATIONAL COOPERATION AGENCY (JICA)



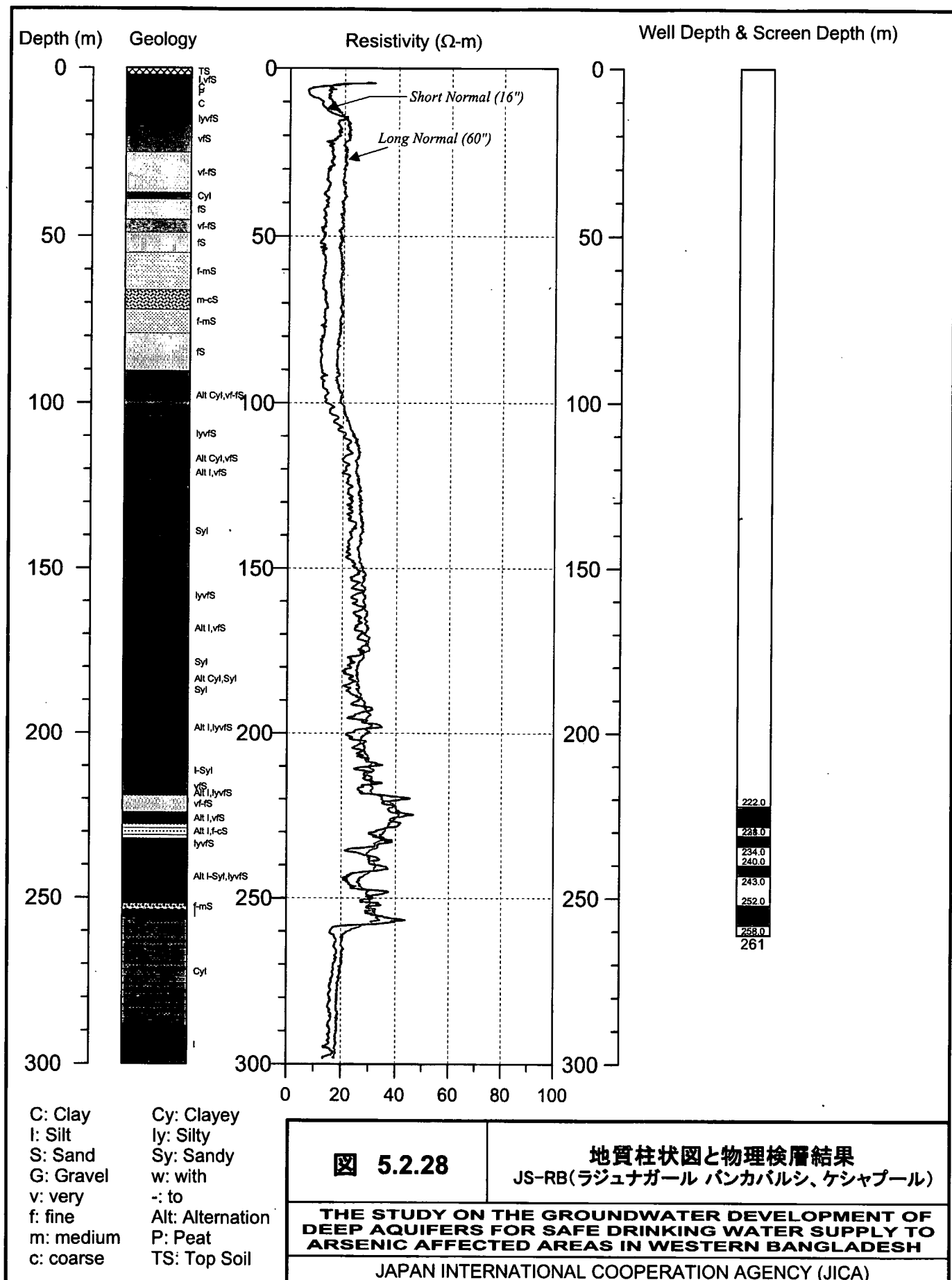
C: Clay
I: Silt
S: Sand
G: Gravel
v: very
f: fine
m: medium
c: coarse

Cy: Clayey
ly: Silty
Sy: Sandy
w: with
-: to
Alt: Alternation
P: Peat
TS: Top Soil

図 5.27 | **地質柱状図と物理検層結果**
JS-2(コルキー、ジェソールポルシャバ)

THE STUDY ON THE GROUNDWATER DEVELOPMENT OF DEEP AQUIFERS FOR SAFE DRINKING WATER SUPPLY TO ARSENIC AFFECTED AREAS IN WESTERN BANGLADESH

JAPAN INTERNATIONAL COOPERATION AGENCY (JICA)



Ch-1 (274m well) Ch-1-1 (63m hole) Ch-1-2 (118m hole) Ch-1-3 (168m hole) Ch-1-4 (300m hole)

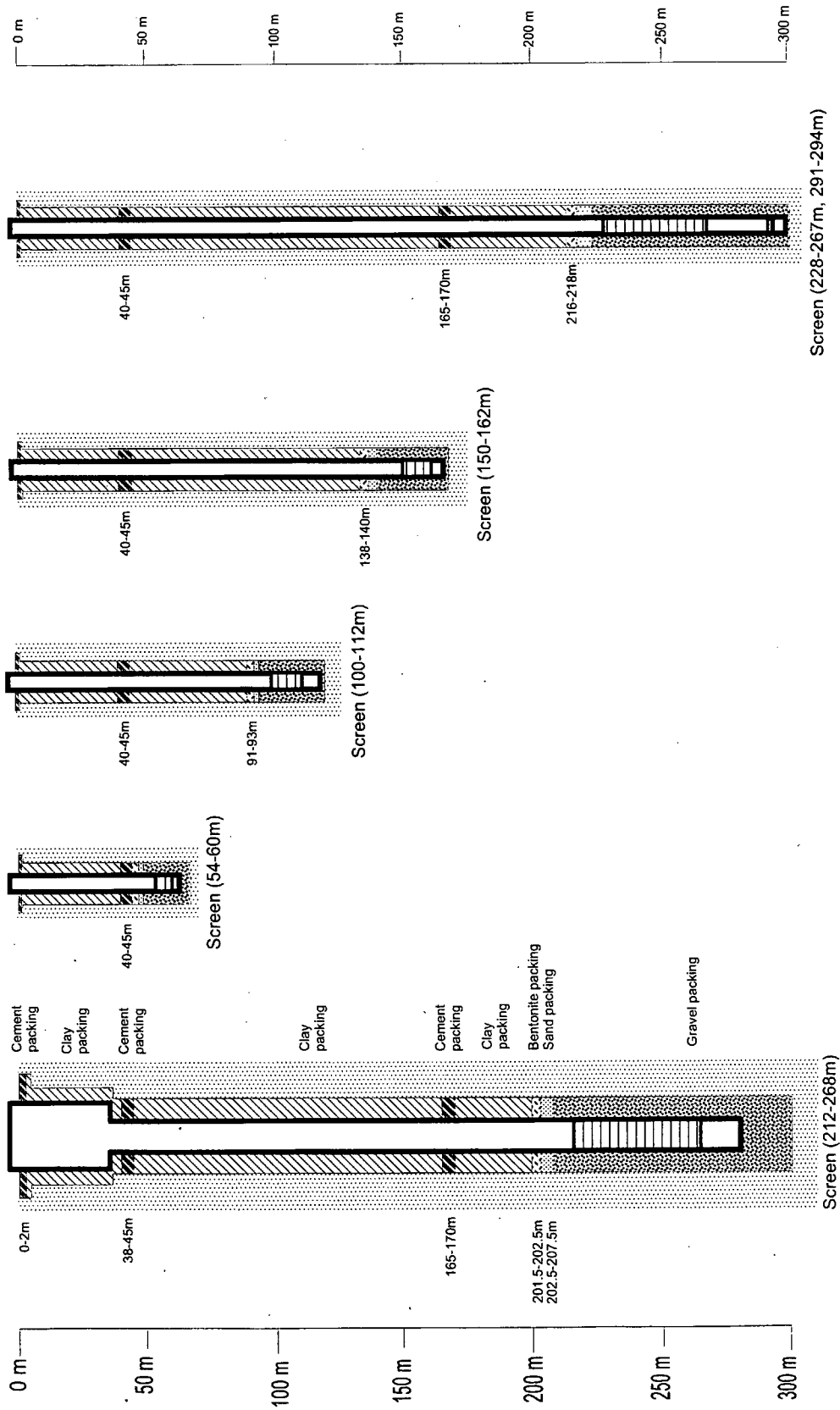


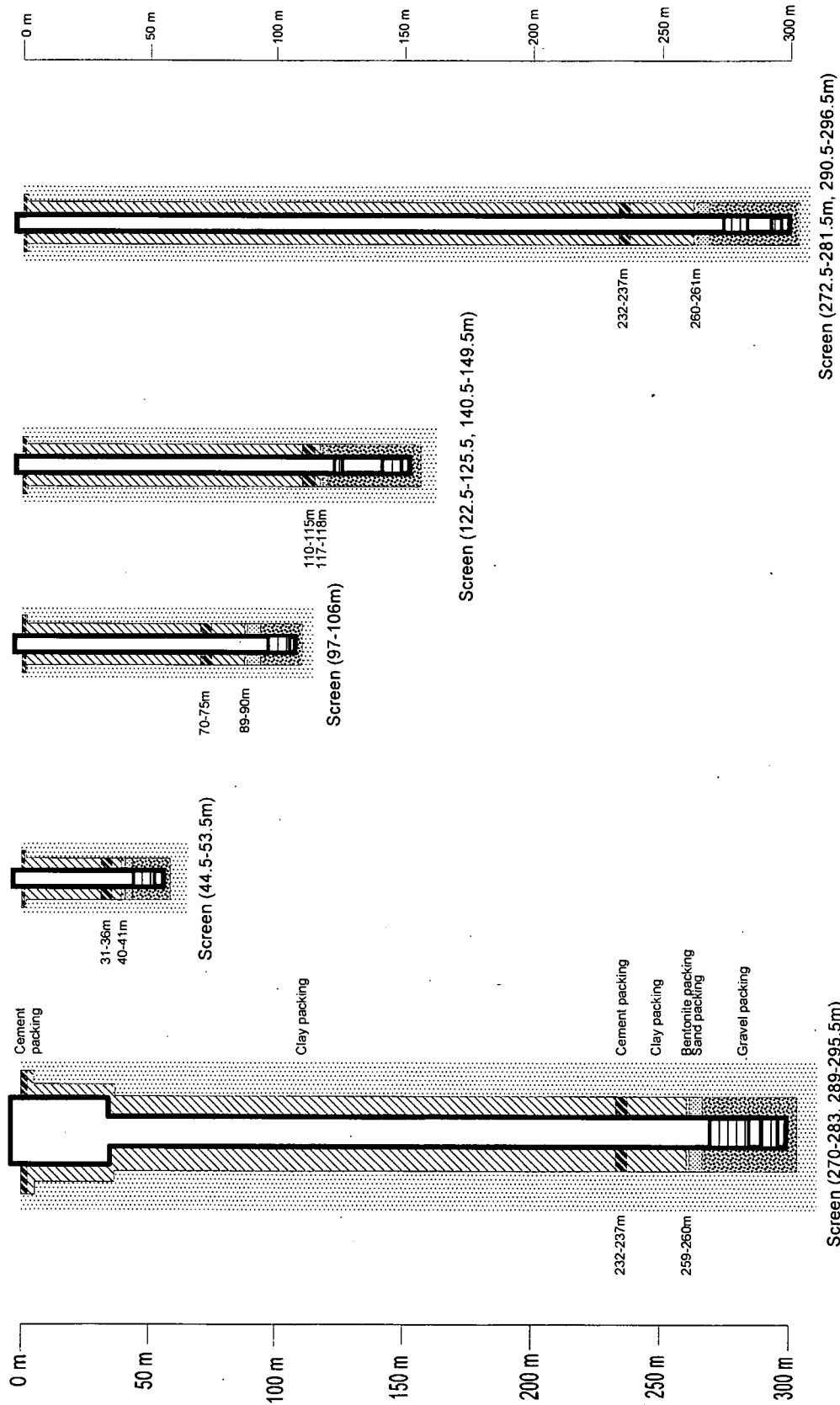
図 5.2.29

観測井及び観測孔のケーシングプログラム
CH-1(ボシエハット、チュアダンガポールシヤバ)

THE STUDY ON THE GROUNDWATER DEVELOPMENT OF DEEP AQUIFERS FOR SAFE DRINKING WATER SUPPLY TO ARSENIC AFFECTED AREAS IN WESTERN BANGLADESH

JAPAN INTERNATIONAL COOPERATION AGENCY (JICA)

Ch-2 (298.5m well) Ch-2-1 (56.5m hole) Ch-2-2 (109m hole) Ch-2-3 (152.5m hole) Ch-2-4 (299.5m hole)



観測井及び観測孔のケーシングブログラム
CH-2(ガールズカレッジ、チュアダンガポルシヤバ)

図 5.2.30

THE STUDY ON THE GROUNDWATER DEVELOPMENT OF DEEP AQUIFERS FOR SAFE DRINKING WATER SUPPLY TO ARSENIC AFFECTED AREAS IN WESTERN BANGLADESH

JAPAN INTERNATIONAL COOPERATION AGENCY (JICA)

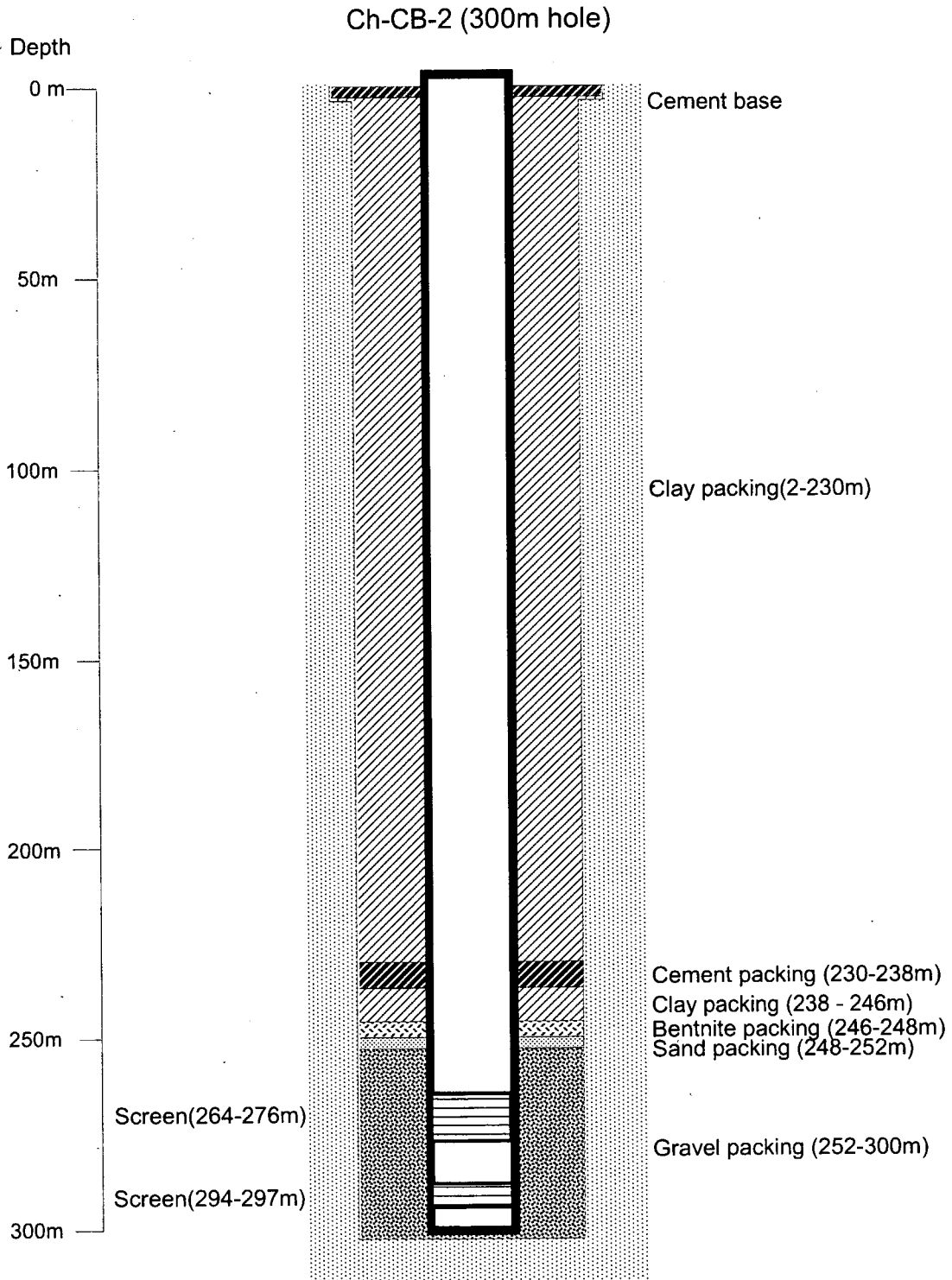
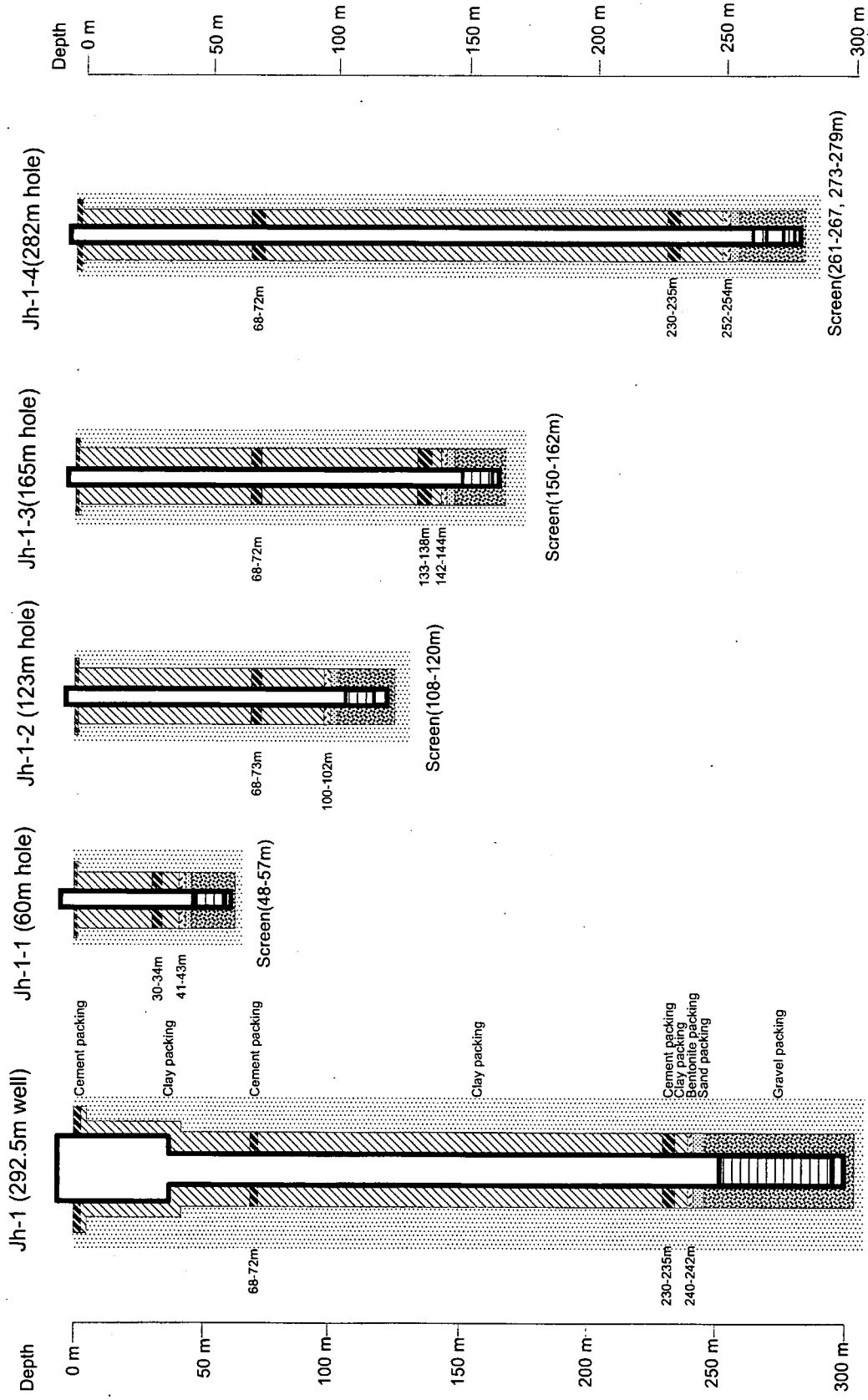


図 5.2.31

観測孔のケーシングプログラム
CH-BD(ポロウドウパティラ、ダムルフダ)

THE STUDY ON THE GROUNDWATER DEVELOPMENT OF
DEEP AQUIFERS FOR SAFE DRINKING WATER SUPPLY TO
ARSENIC AFFECTED AREAS IN WESTERN BANGLADESH

JAPAN INTERNATIONAL COOPERATION AGENCY (JICA)



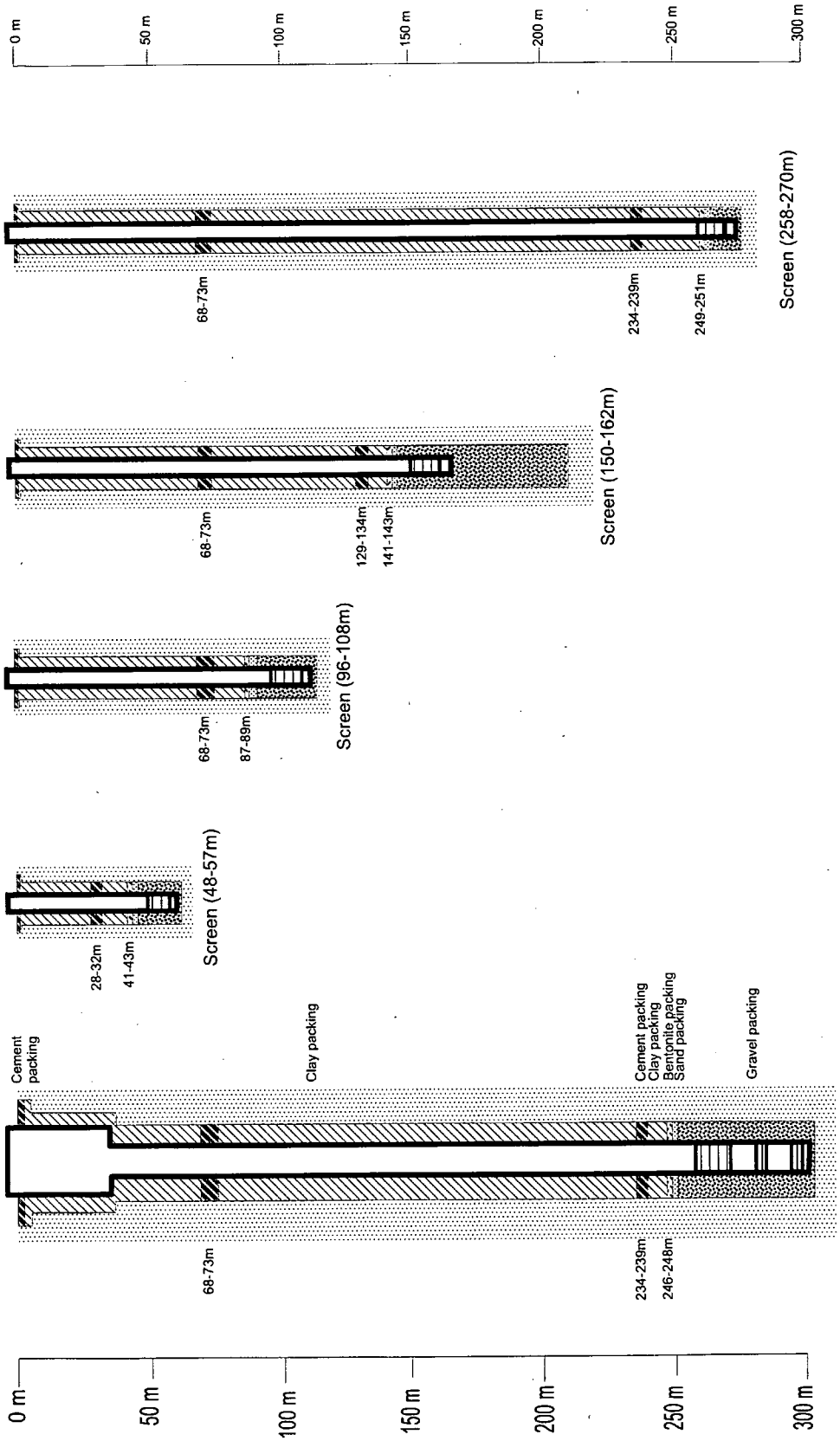
- Legend
- Screen position
 - Gravel packing
 - Sand packing
 - Bentonite packing
 - Clay packing
 - Cement packing

図 5.2.32

観測井及び観測孔のケーシングプログラム
JH-1(アラブプール、ジェナイダポルシヤバ)

THE STUDY ON THE GROUNDWATER DEVELOPMENT OF DEEP AQUIFERS FOR SAFE DRINKING WATER SUPPLY TO ARSENIC AFFECTED AREAS IN WESTERN BANGLADESH
JAPAN INTERNATIONAL COOPERATION AGENCY (JICA)

Jh-2 (301m well) Jh-2-1 (60m hole) Jh-2-2 (111m hole) Jh-2-3 (165m hole) Jh-2-4 (273m hole)



Screen (257.5-270.5, 279.5-282.75, 294.75-298.0m)

Legend

- Screen position
- Gravel packing
- Sand packing
- Bentonite packing
- Clay packing
- Cement packing

図 5.2.33

観測井及び観測孔のケーシングプログラム
JH-2(ハムダ、ジェナイダポルシヤバ)

THE STUDY ON THE GROUNDWATER DEVELOPMENT OF DEEP AQUIFERS FOR SAFE DRINKING WATER SUPPLY TO ARSENIC AFFECTED AREAS IN WESTERN BANGLADESH

JAPAN INTERNATIONAL COOPERATION AGENCY (JICA)

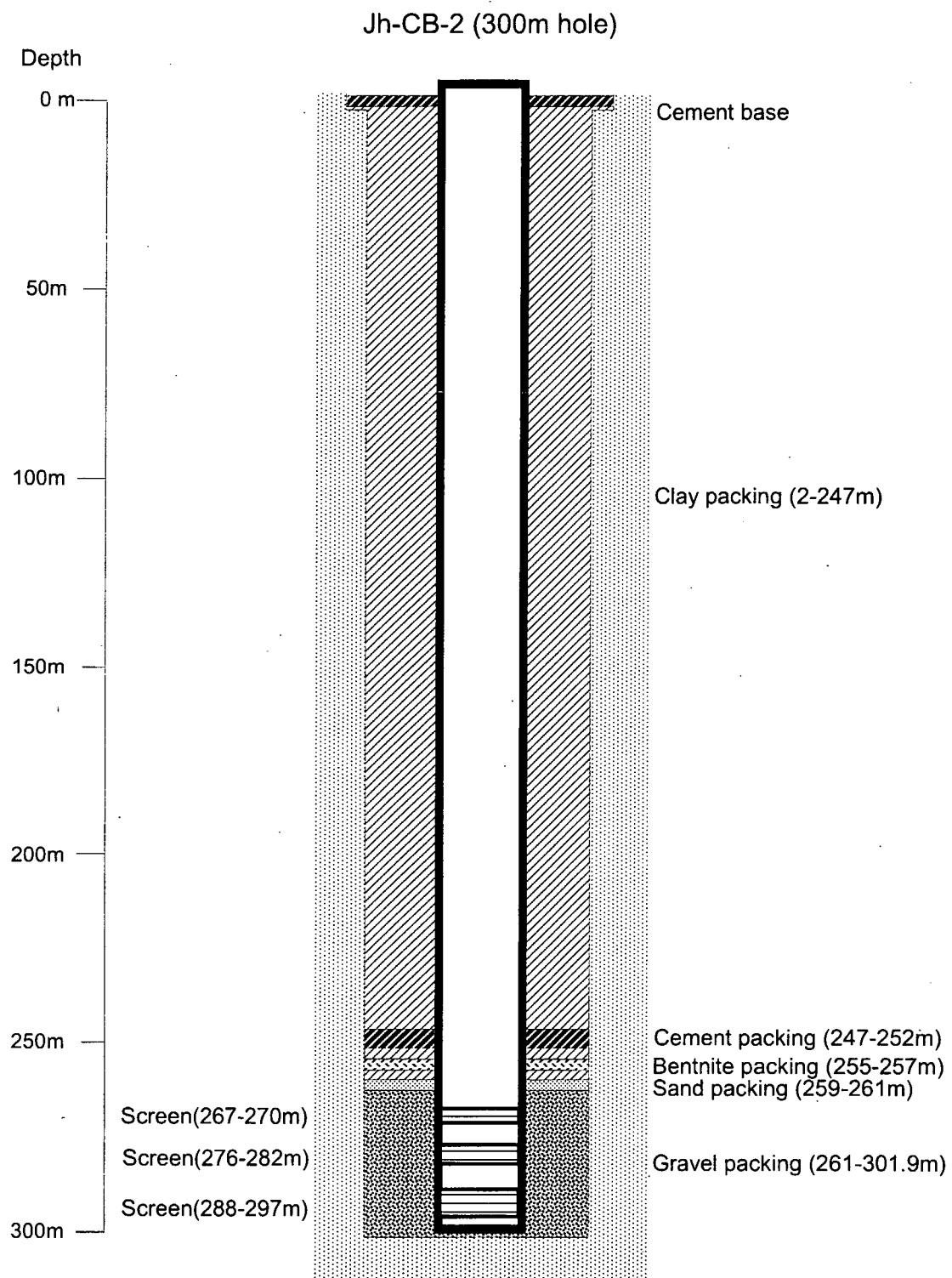


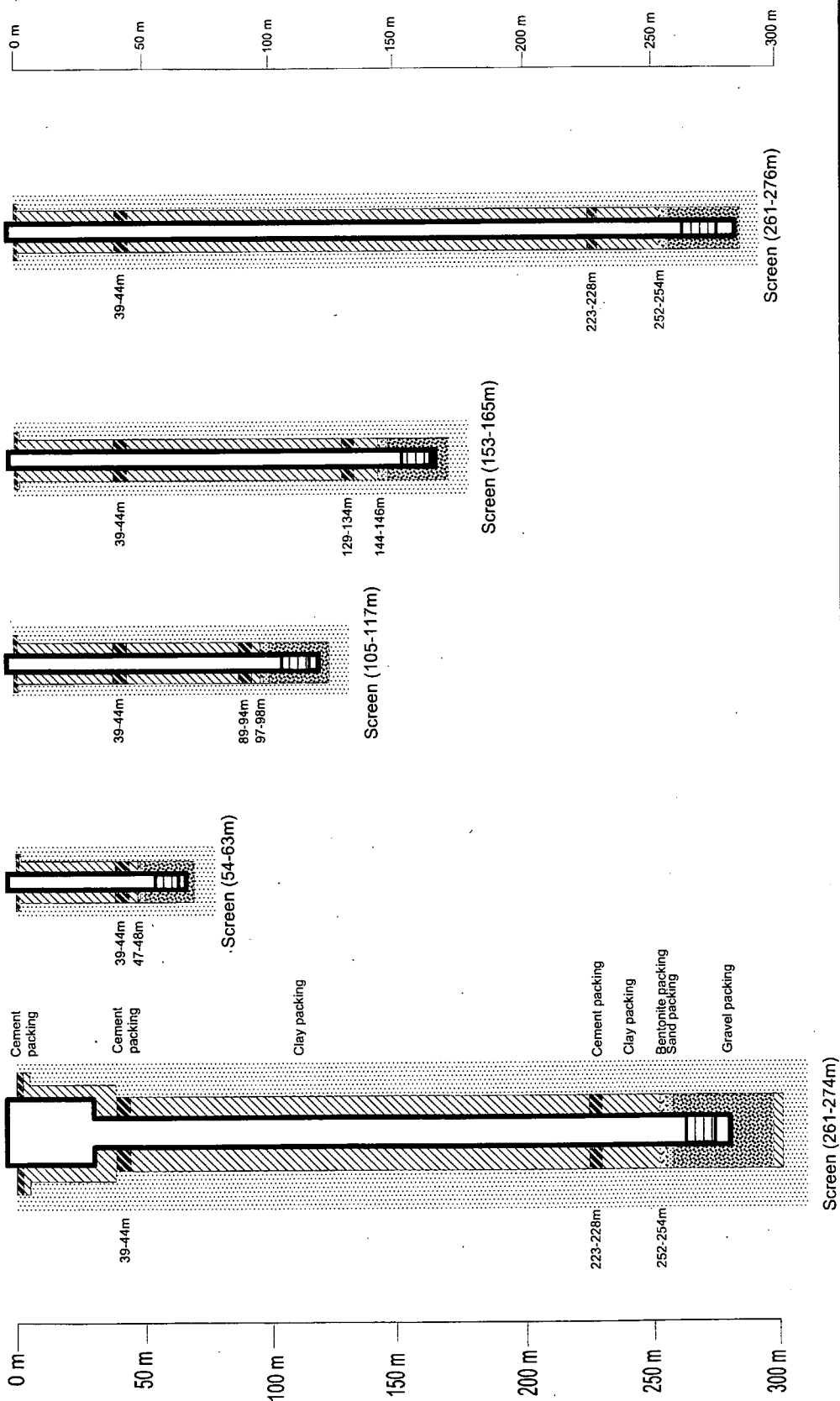
図 5.2.34

観測孔のケーシングプログラム
JH-KC(クリシュナチャンドラプール、モヘシュプール)

THE STUDY ON THE GROUNDWATER DEVELOPMENT OF DEEP AQUIFERS FOR SAFE DRINKING WATER SUPPLY TO ARSENIC AFFECTED AREAS IN WESTERN BANGLADESH

JAPAN INTERNATIONAL COOPERATION AGENCY (JICA)

Js-1 (280m well) Js-1-1 (66m hole) Js-1-2 (120m hole) Js-1-3 (168m hole) Js-1-4 (282m hole)

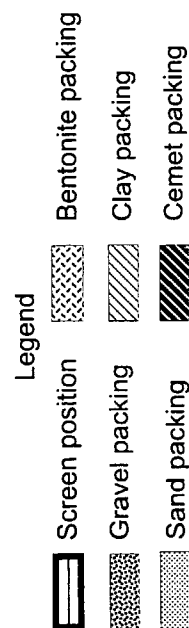


観測井及び観測孔のケーシングプログラム
JS-1(ゴープ、ジェソールポルシヤバ)

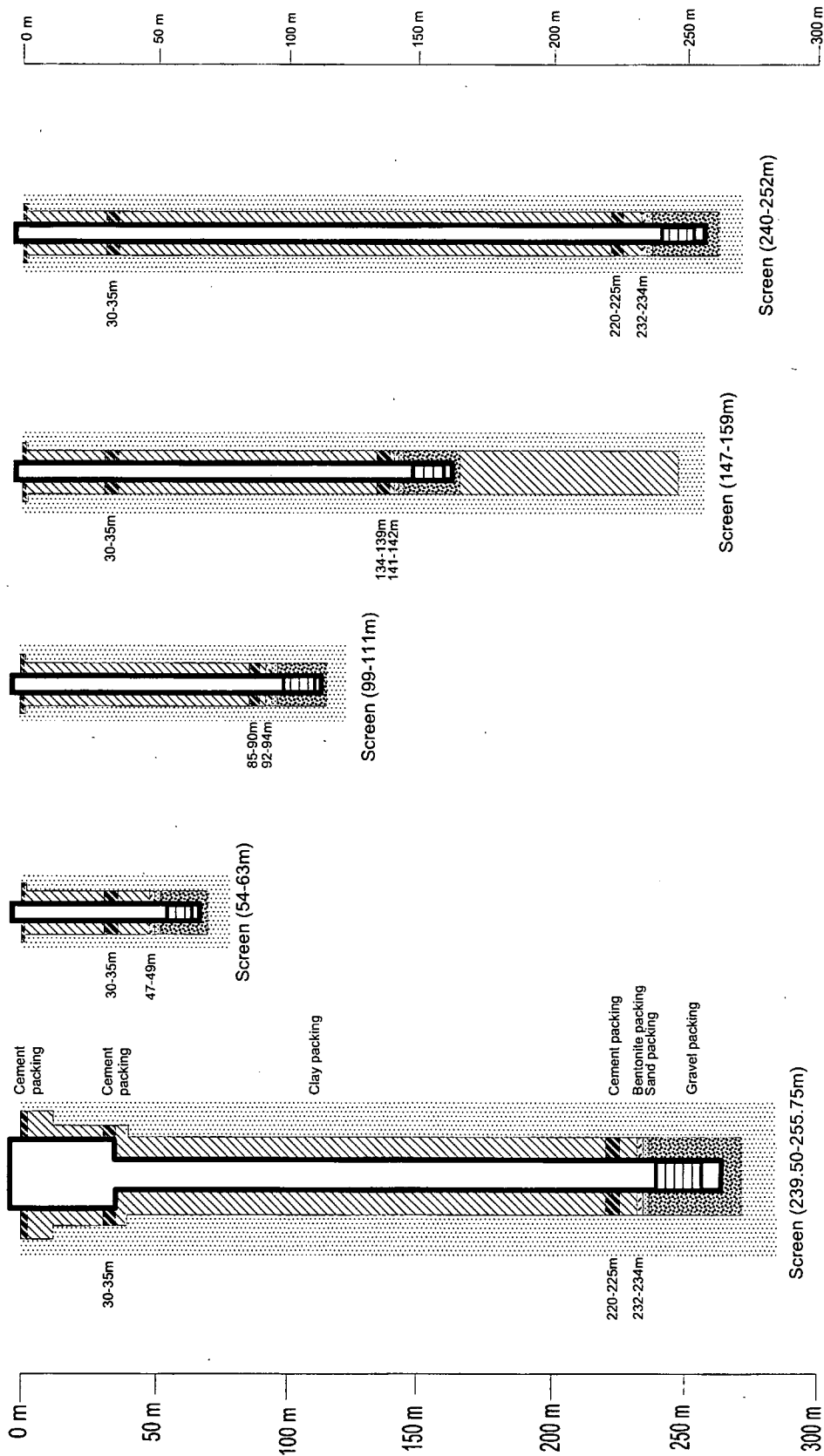
図 5.2.35

THE STUDY ON THE GROUNDWATER DEVELOPMENT OF DEEP AQUIFERS FOR SAFE DRINKING WATER SUPPLY TO ARSENIC AFFECTED AREAS IN WESTERN BANGLADESH

JAPAN INTERNATIONAL COOPERATION AGENCY (JICA)



Js-2 (261.75m well) Js-2-1 (66m hole) Js-2-2 (114m hole) Js-2-3 (162m hole) Js-2-4 (255m hole)

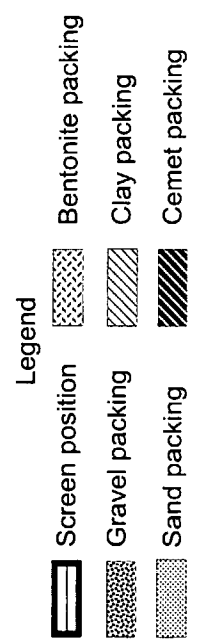


観測井及び観測孔のケーシングプログラム
JS-2(コルギー、ジェソールポルシヤバ)

図 5.2.36

THE STUDY ON THE GROUNDWATER DEVELOPMENT OF DEEP AQUIFERS FOR SAFE DRINKING WATER SUPPLY TO ARSENIC AFFECTED AREAS IN WESTERN BANGLADESH

JAPAN INTERNATIONAL COOPERATION AGENCY (JICA)



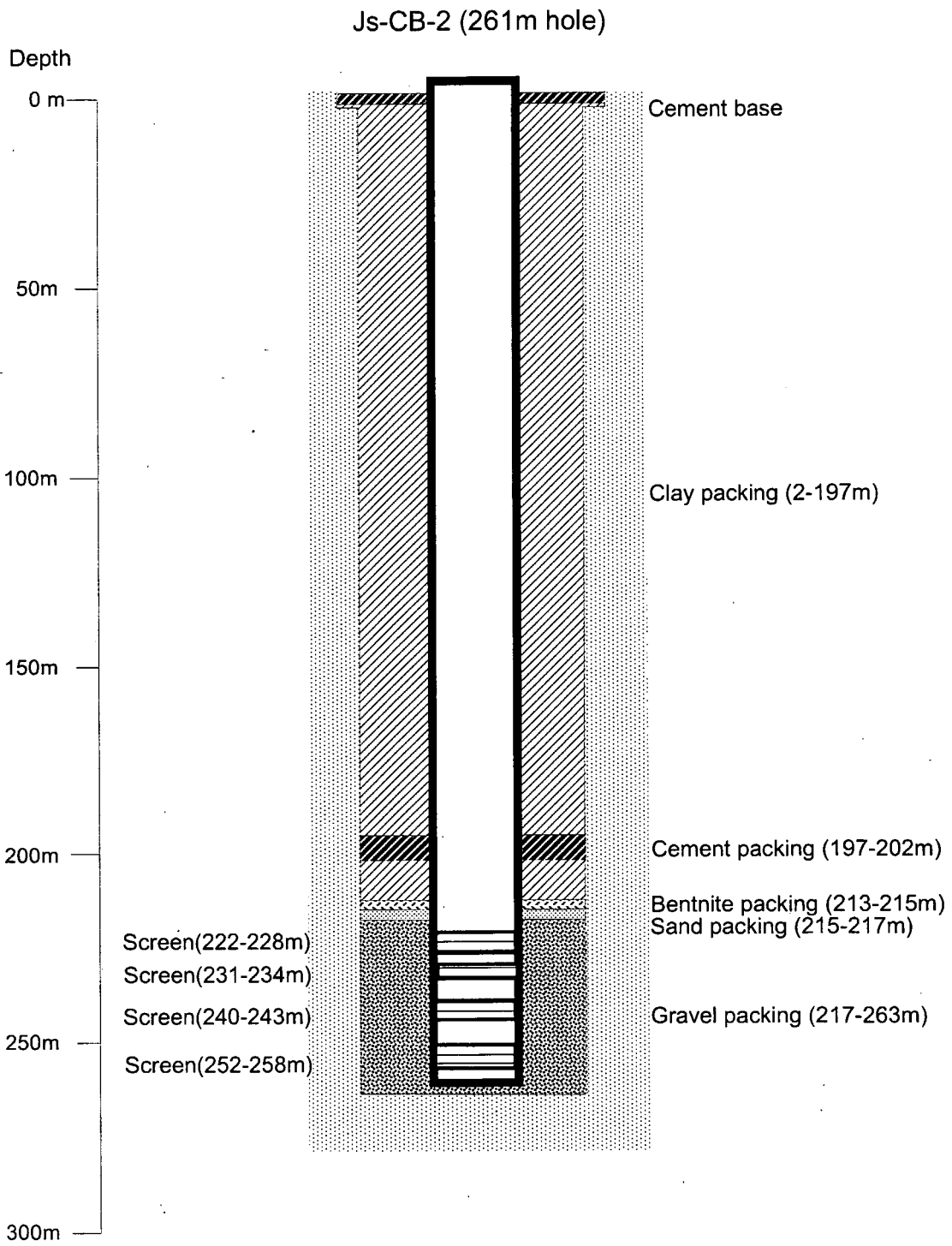


図 5.2.37

観測井及び観測孔のケーシングプログラム
JS-RB(ラジュナガール バンカバルシ、ケシャプール)

THE STUDY ON THE GROUNDWATER DEVELOPMENT OF
DEEP AQUIFERS FOR SAFE DRINKING WATER SUPPLY TO
ARSENIC AFFECTED AREAS IN WESTERN BANGLADESH

JAPAN INTERNATIONAL COOPERATION AGENCY (JICA)