

DRAWINGS

LEGEND

1	Control Point	
2	Contour Line	
3	House	
4	Tree	
5	Road	
6	Spot Height	
7	Wall	
8	Electric Pole	
9	Transformer	
10	Fence	
11	Drilling Point	

Co-ordinates Of Control Points

Pt. No.	Northing	Easting	Elevation
T1	10000.00	10000.00	1400.00
T2	10018.52	9941.75	1400.10

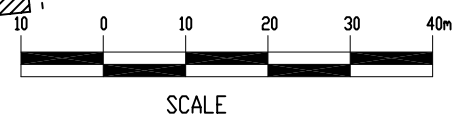
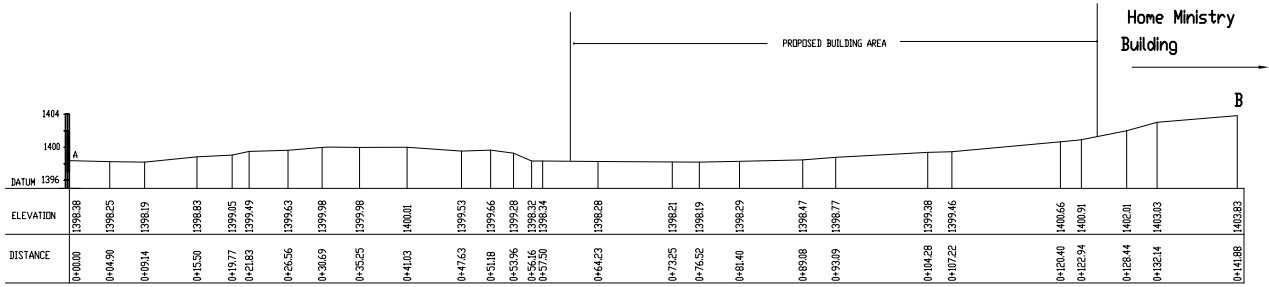
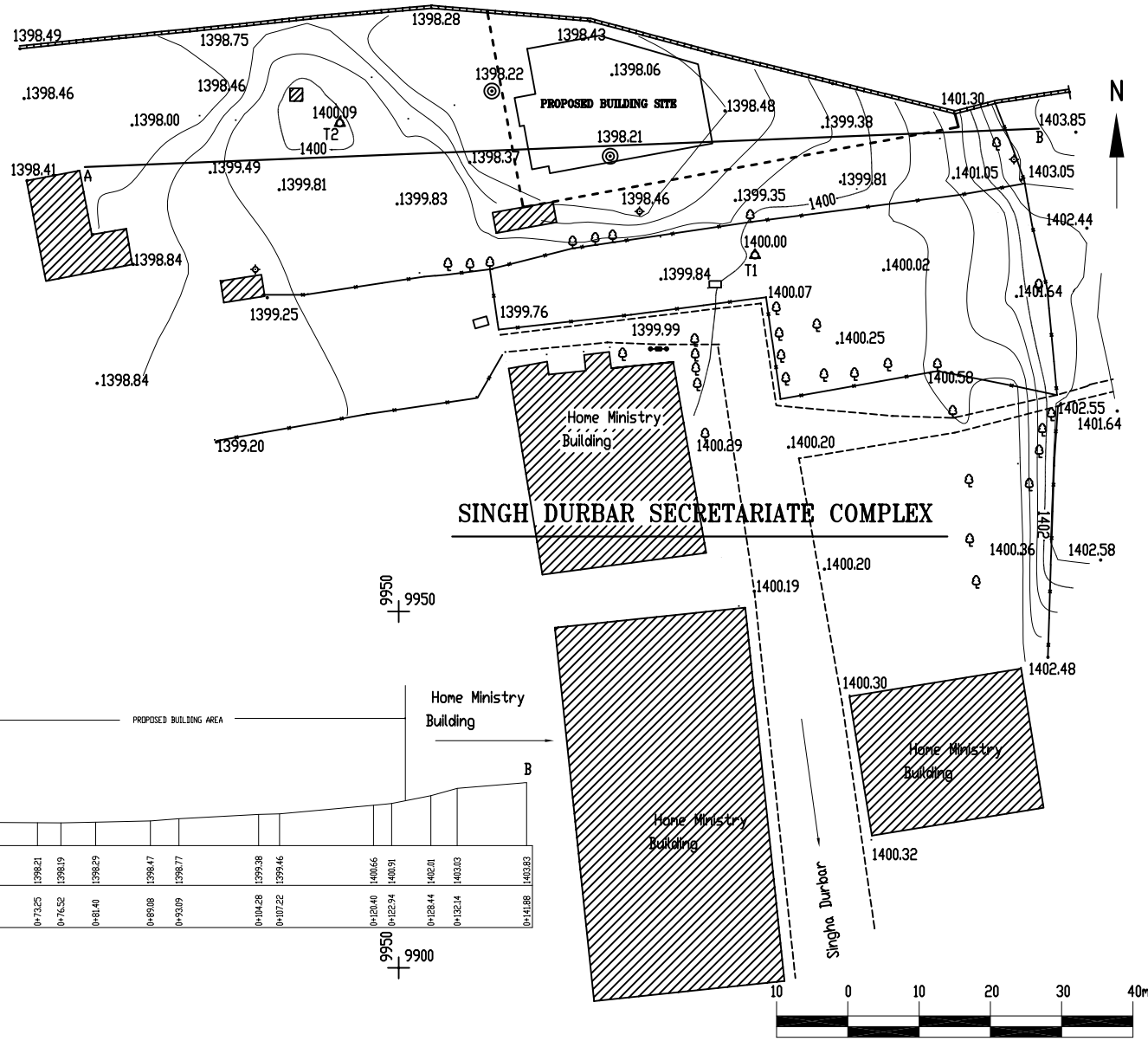


Fig. C-1 K3 S/S Topographical Map

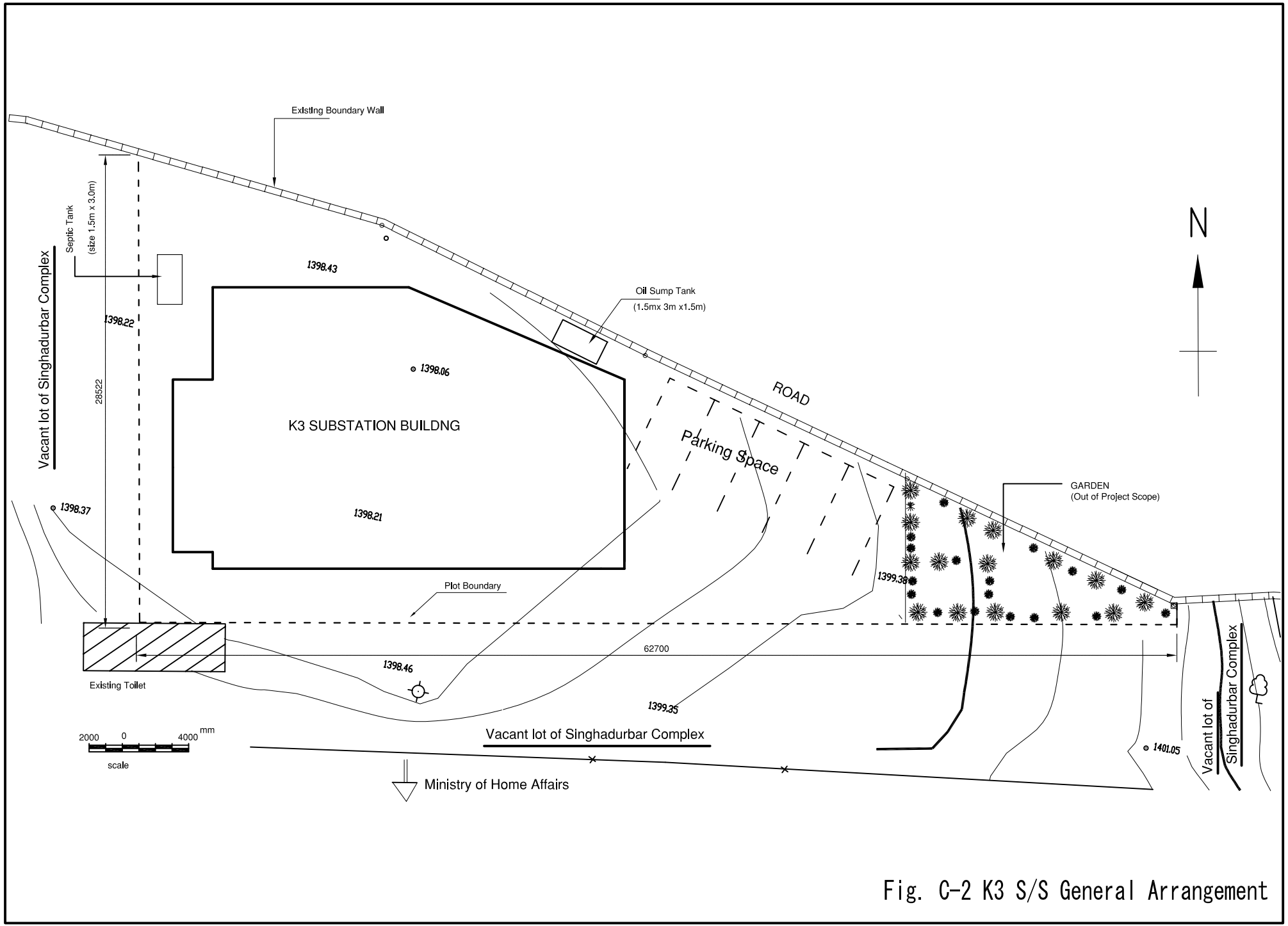


Fig. C-2 K3 S/S General Arrangement

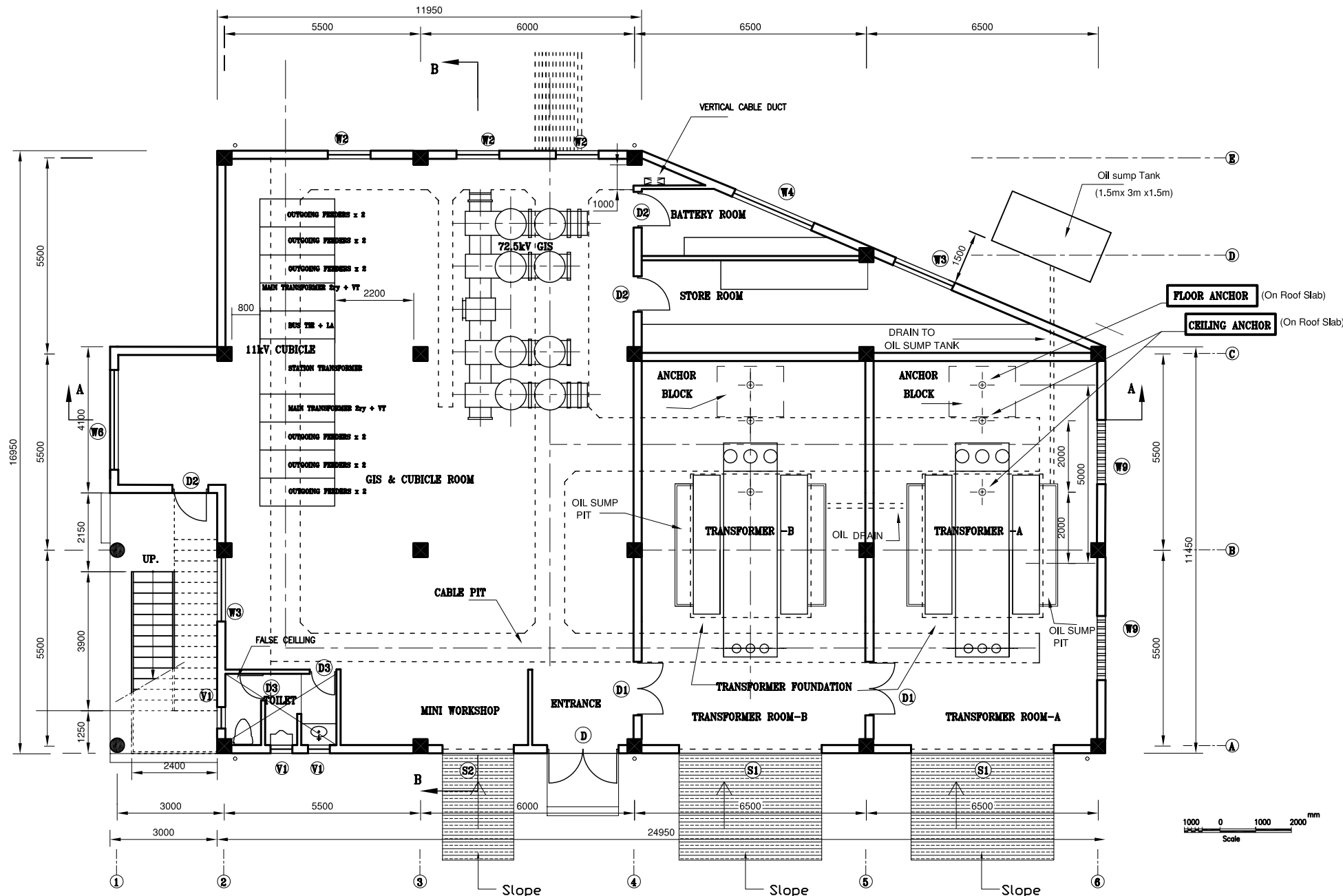


Fig. C-3 K3 S/S Ground Floor Plan (GIS, Cubicle and Transformer Room)

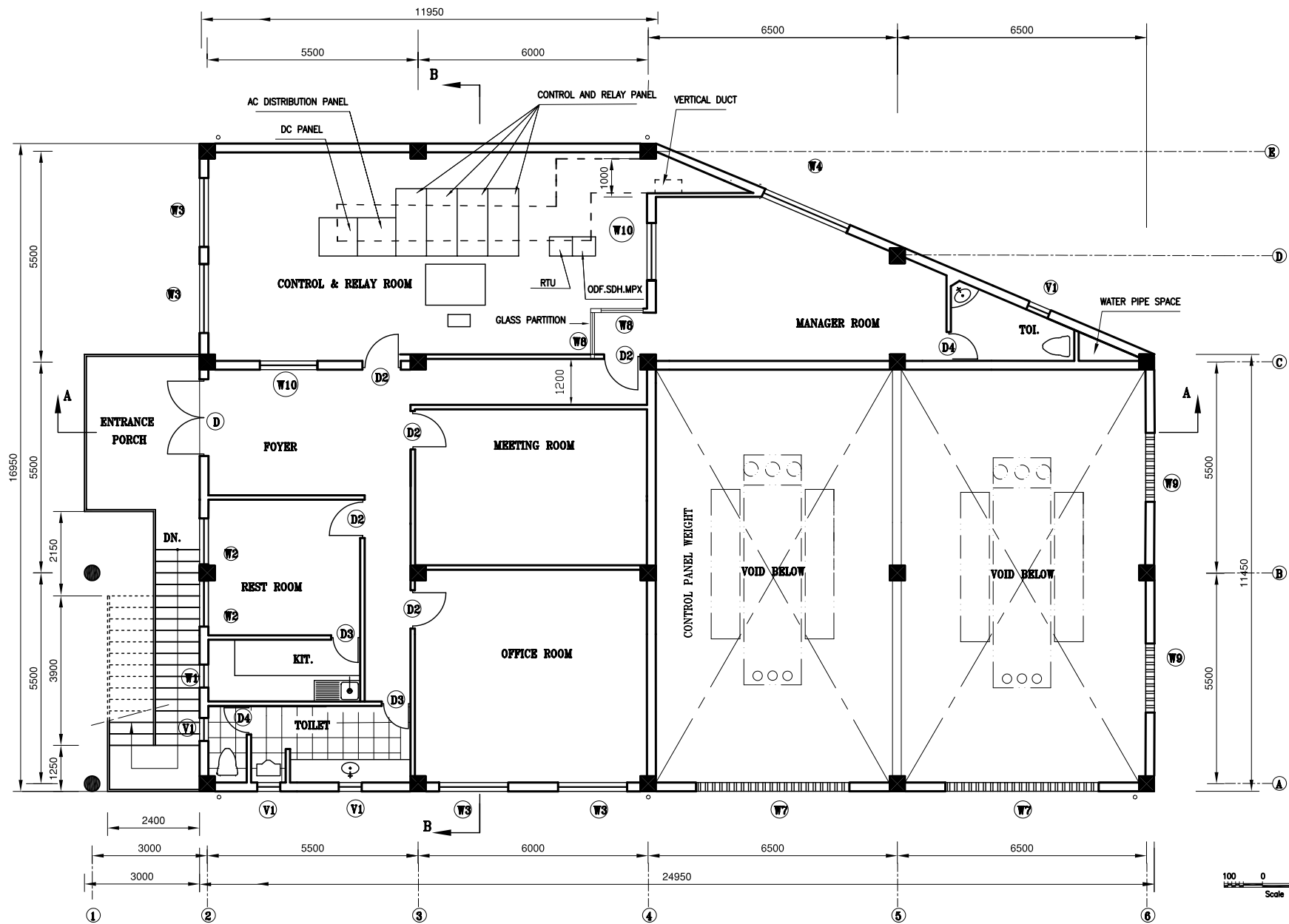
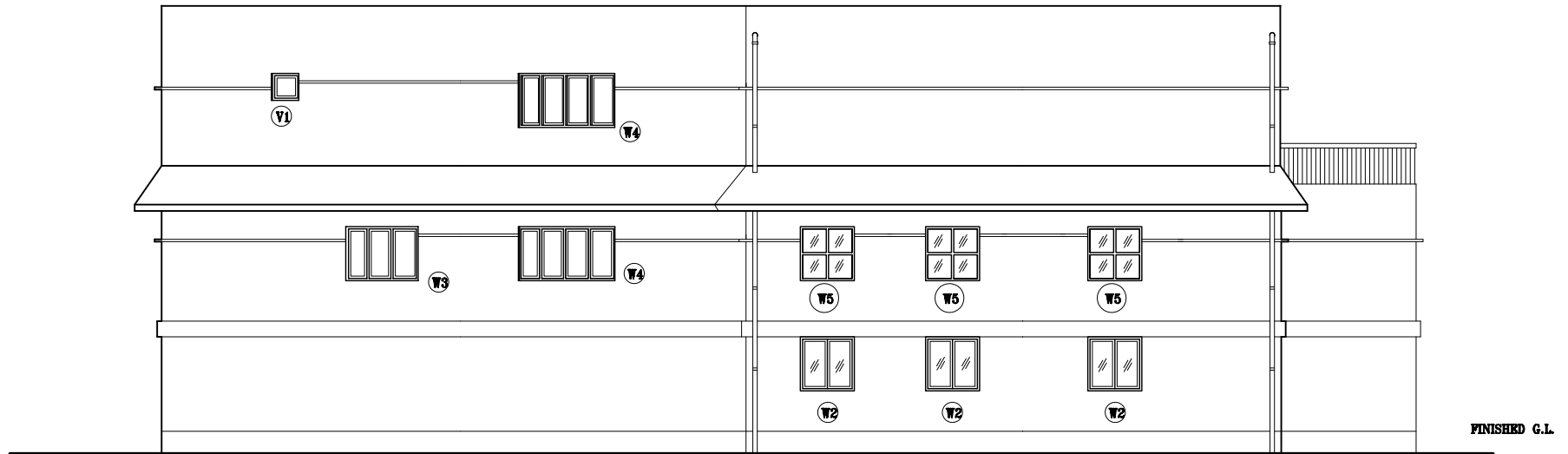
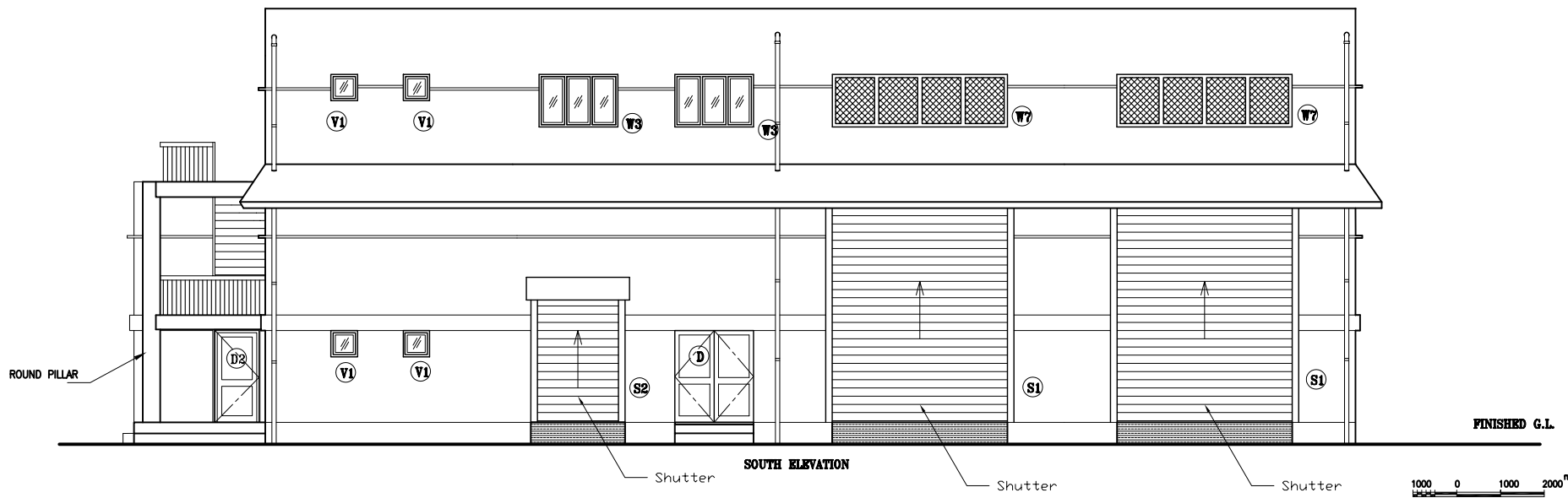


Fig. C-4 K3 S/S 1st Floor Plan (Control Room, Office and Manager Room)

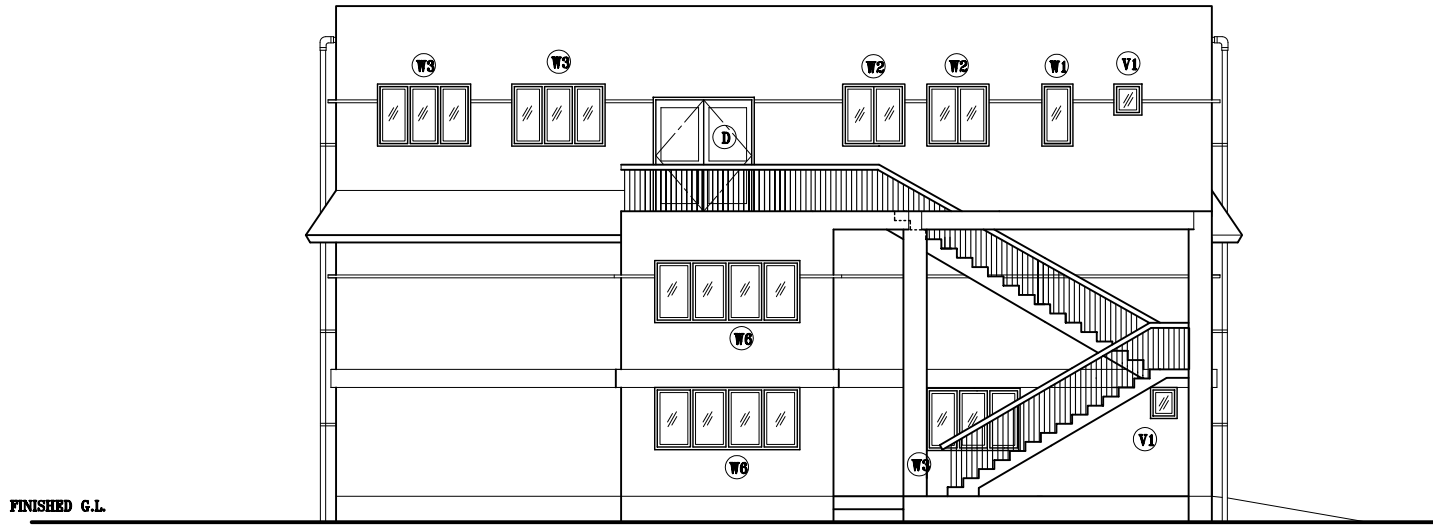


NORTH ELEVATION

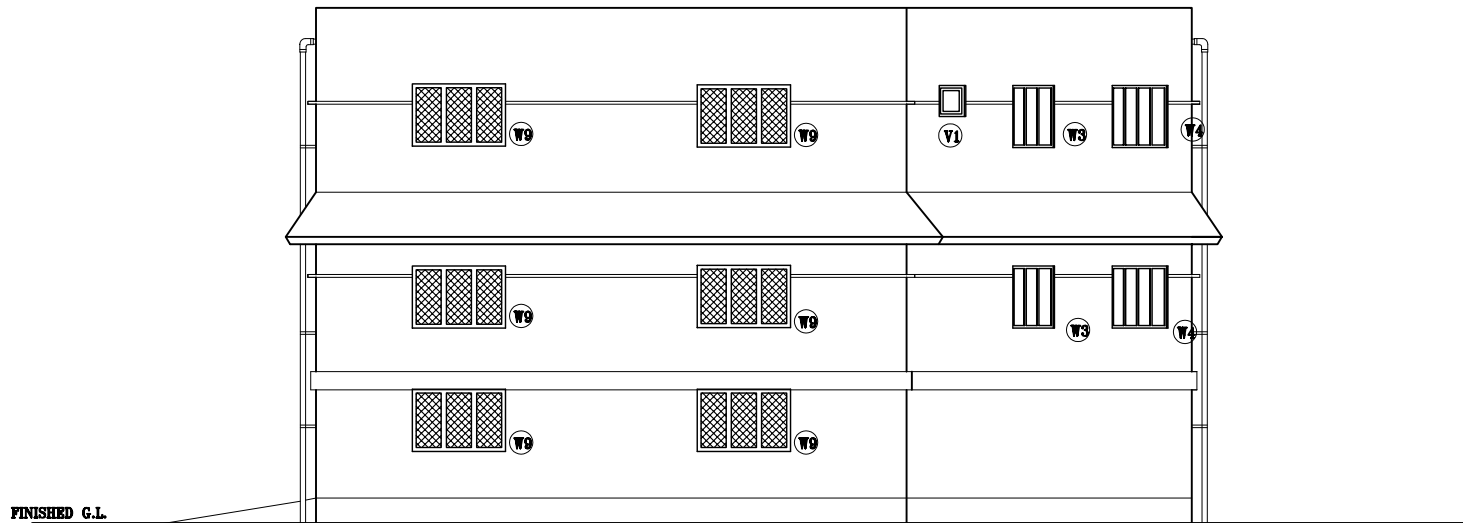


SOUTH ELEVATION

Fig. C-6 K3 S/S Front View (South Side) and Rear View (North Side)



WEST ELEVATION



EAST ELEVATION

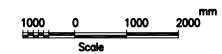
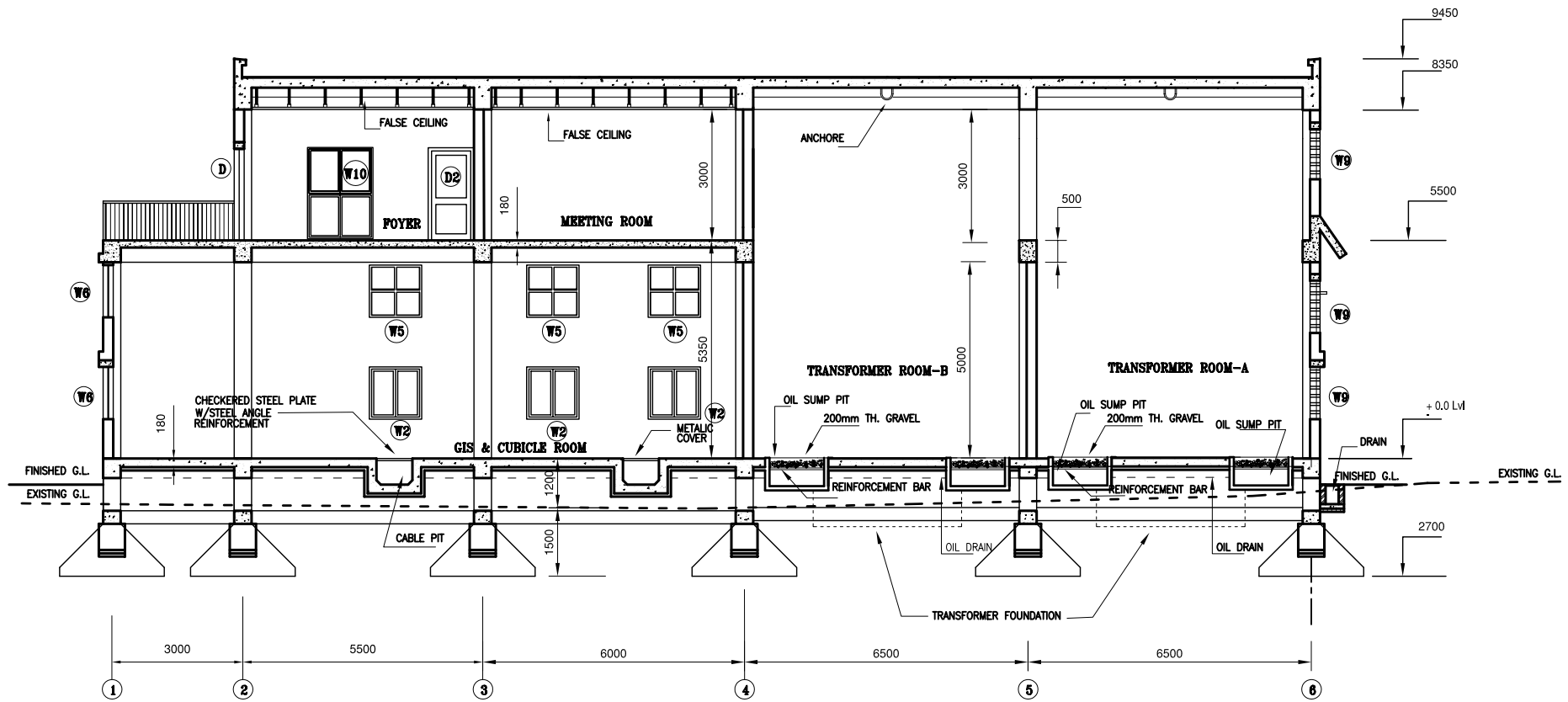


Fig. C-7 K3 S/S Side View (East Side & West Side)



SECTION AT A-A

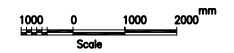


Fig. C-8 K3 S/S Section at A-A of Fig. C-3 & Fig. C-4

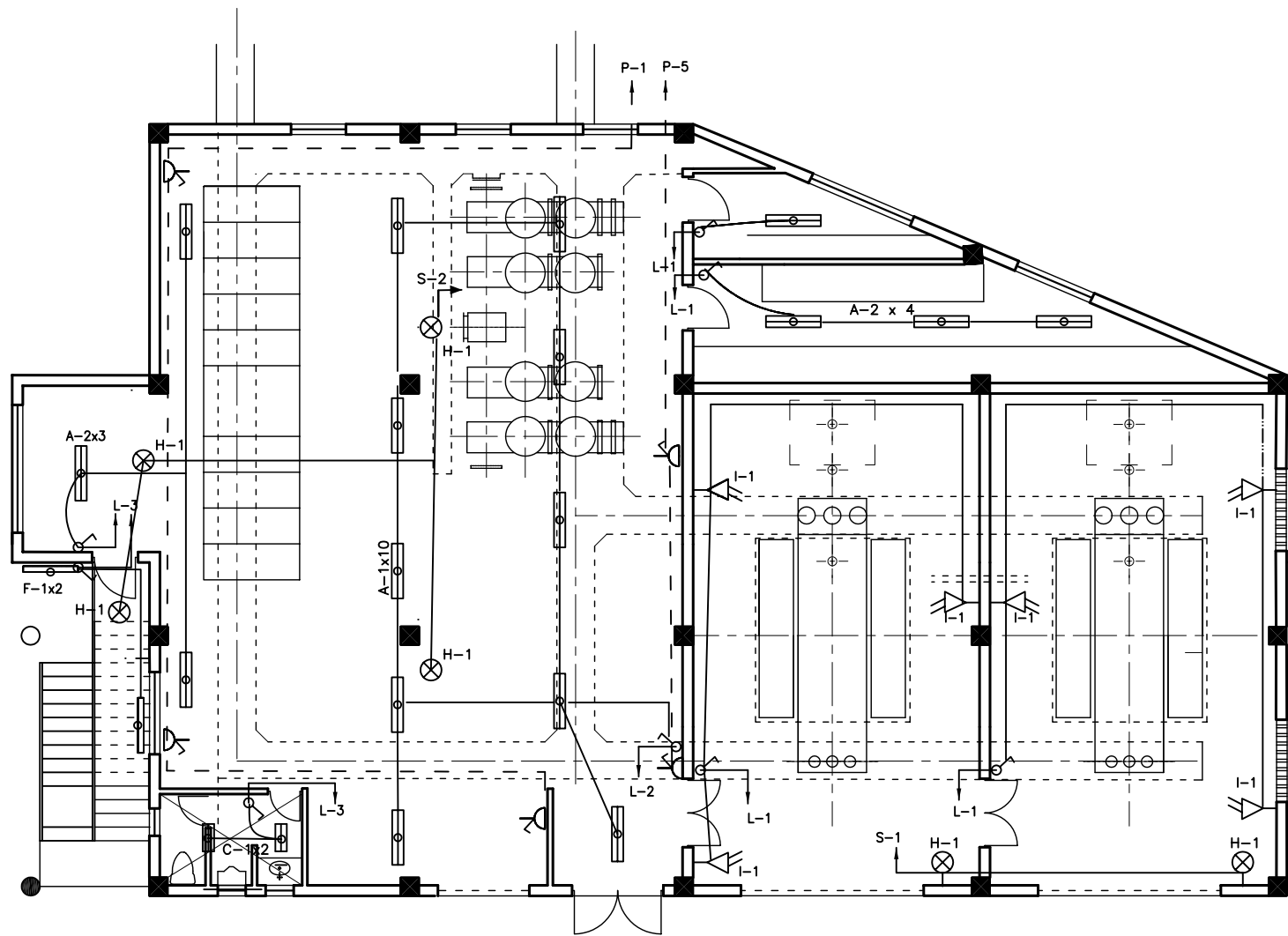
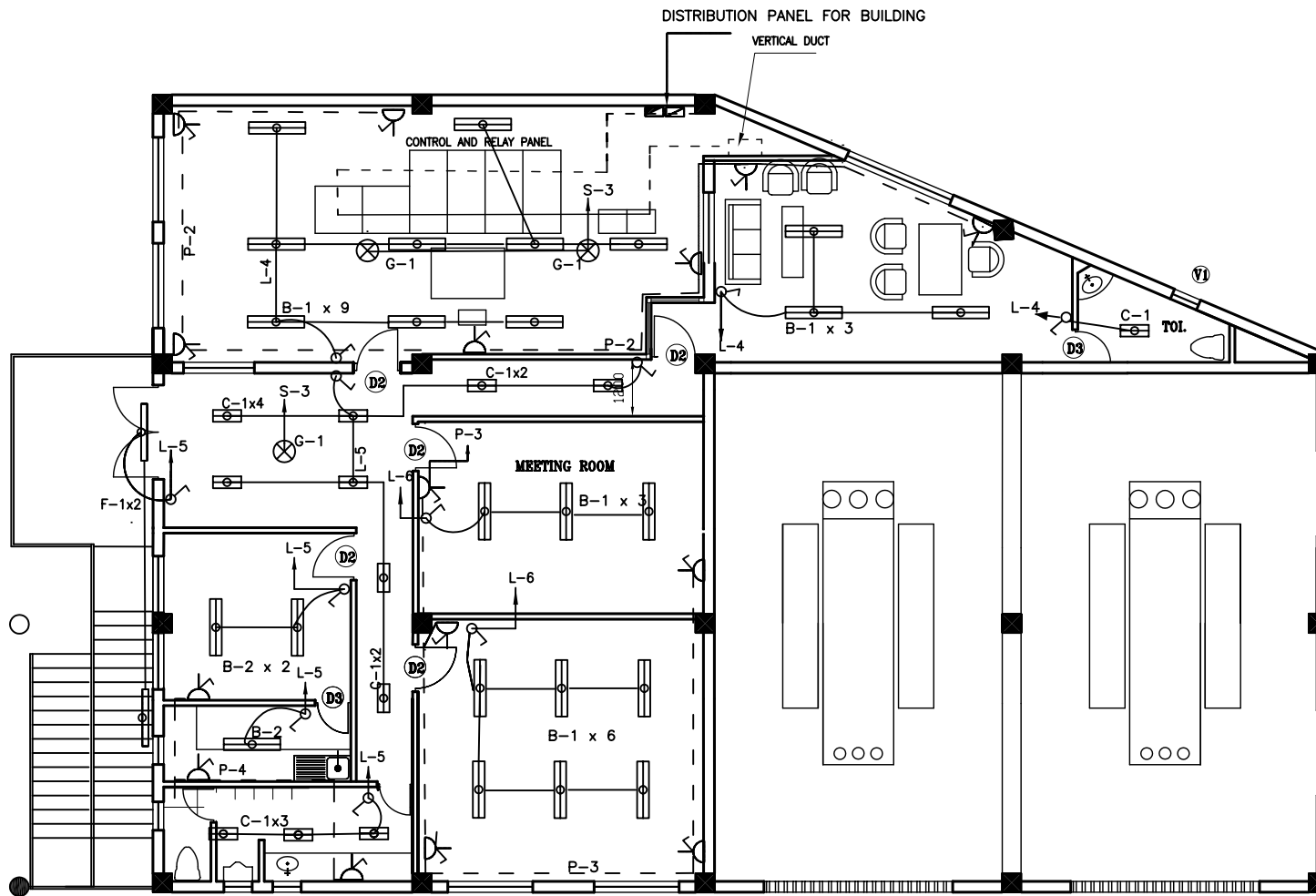
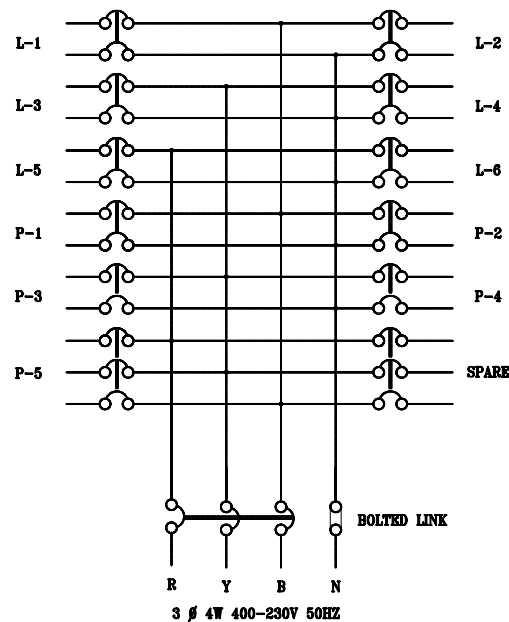


Fig. C-12 K3 S/S Arrangement of Lighting Fixture at Ground Floor

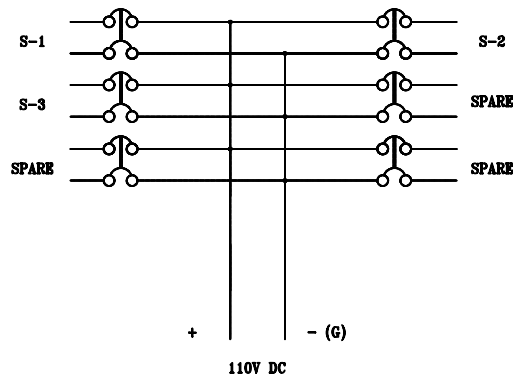


100 0 100 200
Scale

Fig. C-13 K3 S/S Arrangement of Lighting Fixture at 1st Floor



TYPICAL AC PANEL FOR LIGHTING



DC PANEL FOR EMERGENCY LIGHTING

TYPE ; A	TYPE ; B	TYPE ; C
CEILING MOUNTED FLUORESCENT LIGHT	CEILING FLUSH MOUNTED FLUORESCENT LIGHT	CEILING FLUSH MOUNTED INCANDESCENT LIGHT
A-1 FL 40W x 2	B-1 FL 40W x 2	C-1 IL 40W x 1
A-2 FL 40W x 1	B-2 FL 20W x 2	
A-3 FL 20W x 3	B-3 FL 20W x 1	
TYPE ; D	TYPE ; E	TYPE ; F
N.A.	N.A.	WALL MOUNTED FLUORESCENT LIGHT OUTDOOR TYPE
		F-1 FL 20W x 1
TYPE ; G	TYPE ; H	TYPE ; I
CEILING FLUSH MOUNTED INCANDESCENT LIGHT (DC)	CEILING MOUNTED INCANDESCENT LIGHT (DC)	WALL MOUNTED FLOOD LIGHT (METAL HALIDE)
G-1 IL 40W	H-1 IL 40W x 1	I-1 FL 70W

LEGEND:

	FLUORESCENT LIGHTING FIXTURE. CEILING MOUNTED
	DITTO WALL MOUNTED
	INCANDESCENT LIGHTING FIXTURE, CEILING MOUNTED EMERGENCY LIGHT
	RECEPATACLE DUPLEX, 1 φ, 3P 15A-250V WITH GROUND TYPE
	SWITCH, 1P-15A-300V
	DITTO 2WAY-15A -300V
	DISTRIBUTION PANEL FOR AC LIGHTING
	DITTO FOR DC LIGHTING AND AUXILIARY SERVICE
	CONCREALD PIPING IN CEILING OR WALL
	DITTO IN FLOOR
	PIPING FOR UP AND DOWN
	WALL MOUNTED FLOOD LIGHT

Fig. C-14 K3 S/S Connection Diagram of AC/DC Lighting Panels

LEGEND	
BCT	BUSHING CURRENT TRANSFORMER
CB	CIRCUIT BREAKER
CH	CABLE HEAD
CT	CURRENT TRANSFORMER
DS	DISCONNECTING SWITCH
LA	LIGHTNING ARRESTER
	MOLDED CASE CIRCUIT BREAKER
M.TR	MAIN TRANSFORMER
PT	POTENTIAL TRANSFORMER
PD	POTENTIAL DEVICE
STR	STATION SERVICE TRANSFORMER
	AC AMMETER
	DC AMMETER
	AC DEMAND AMMETER
	VAR METER
	PILOT LAMP
	VOID
	VOLT METER
	DC VOLT METER
	WATTMETER
	WATT HOUR METER
	POWER FACTOR METER
	UNDER VOLTAGE RELAY
	OVER CURRENT RELAY
	OVER CURRENT GROUND RELAY
	DIFFERENTIAL RELAY
	VOLTAGE REGULATE RELAY
	VOID
DFS	DISCONNECTING FUSE SWITCH

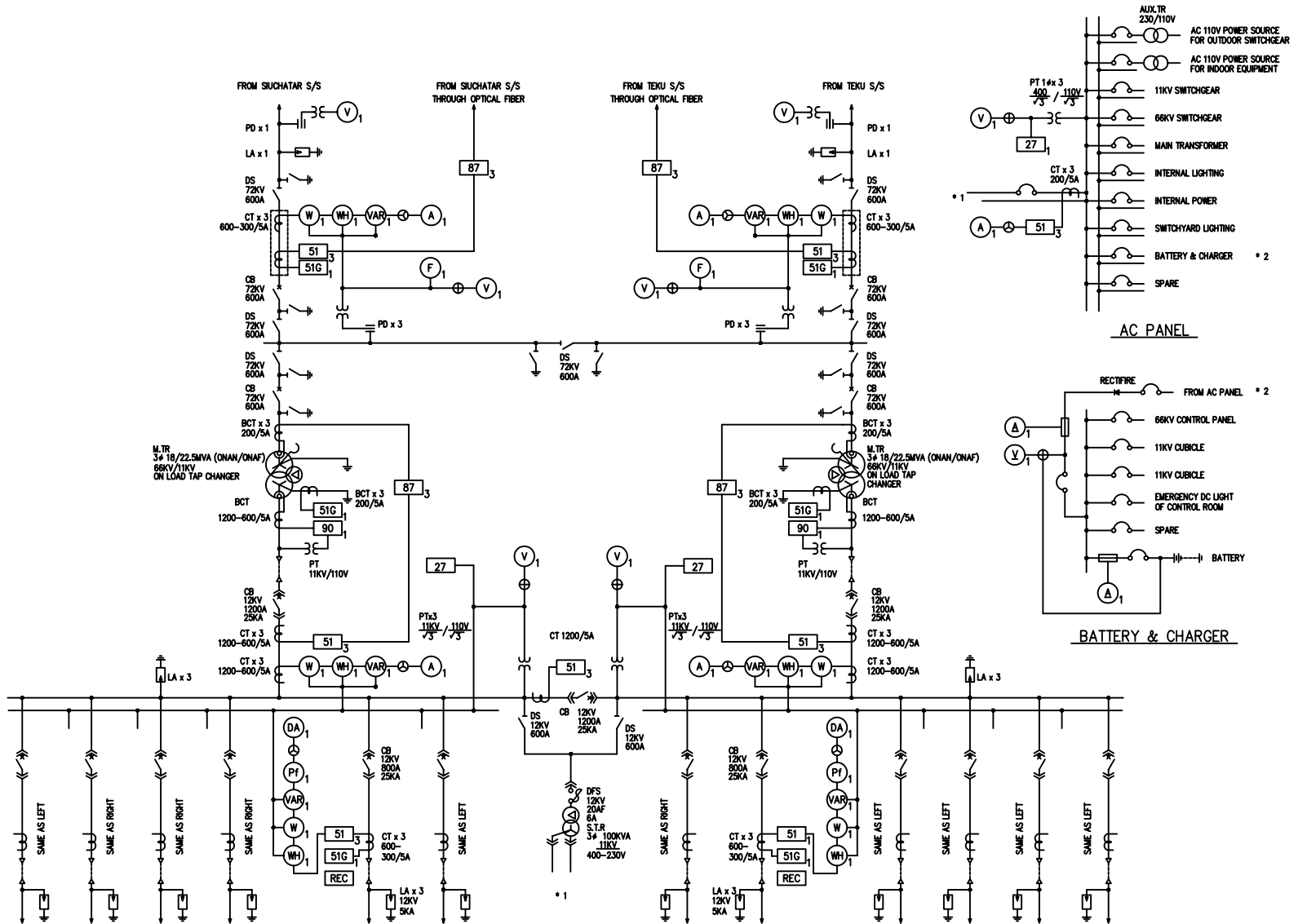
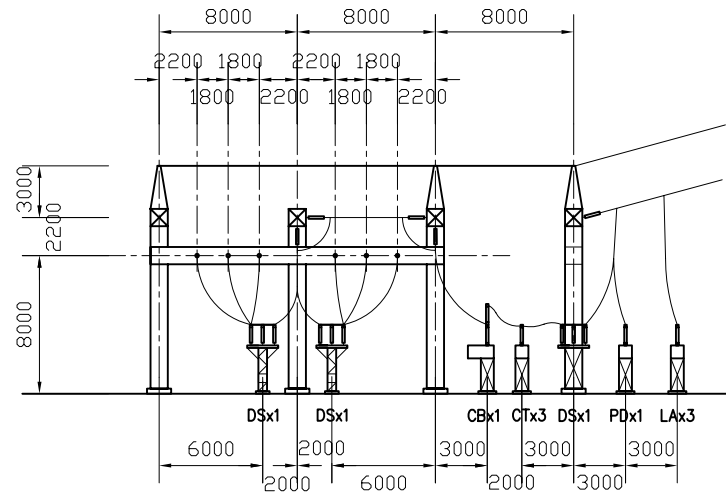

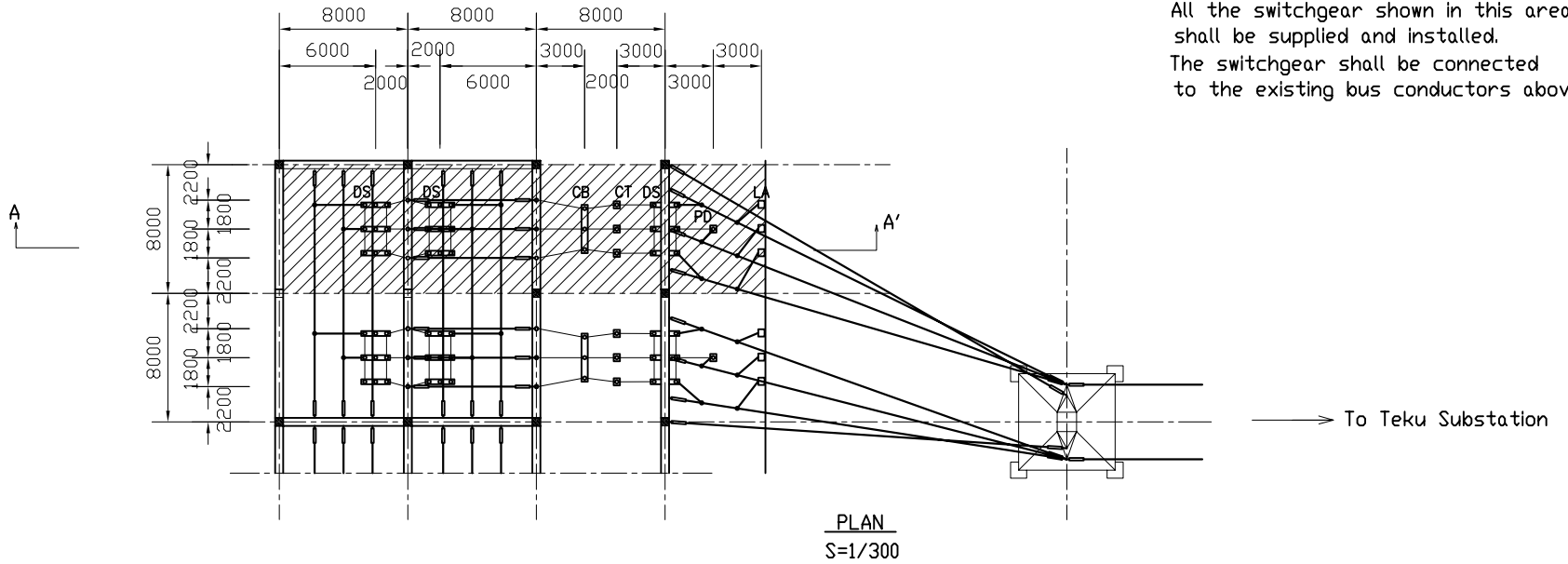


Fig. KS-1 K3 S/S Single Line Diagram



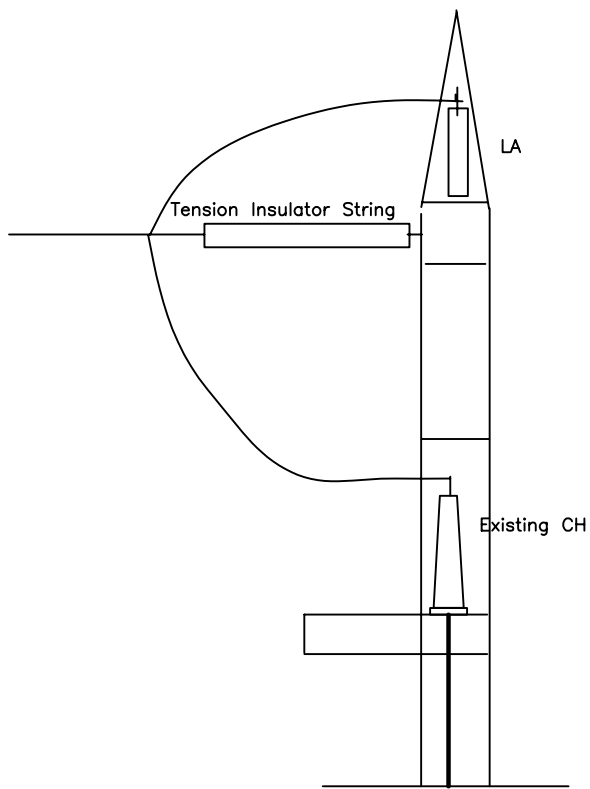
SECTION A-A'
S=1/300

 : Scope of the Project.
All the switchgear shown in this area shall be supplied and installed.
The switchgear shall be connected to the existing bus conductors above.

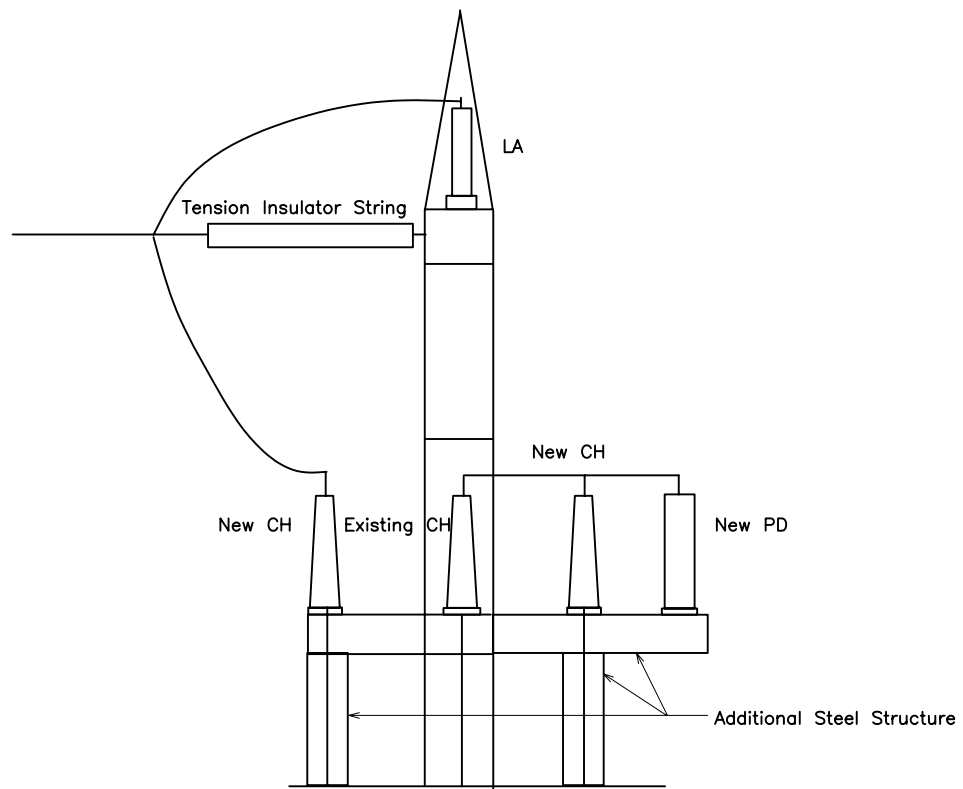


PLAN
S=1/300

Fig. SS-1 Siuchatar S/S - 66 kV Switchgear



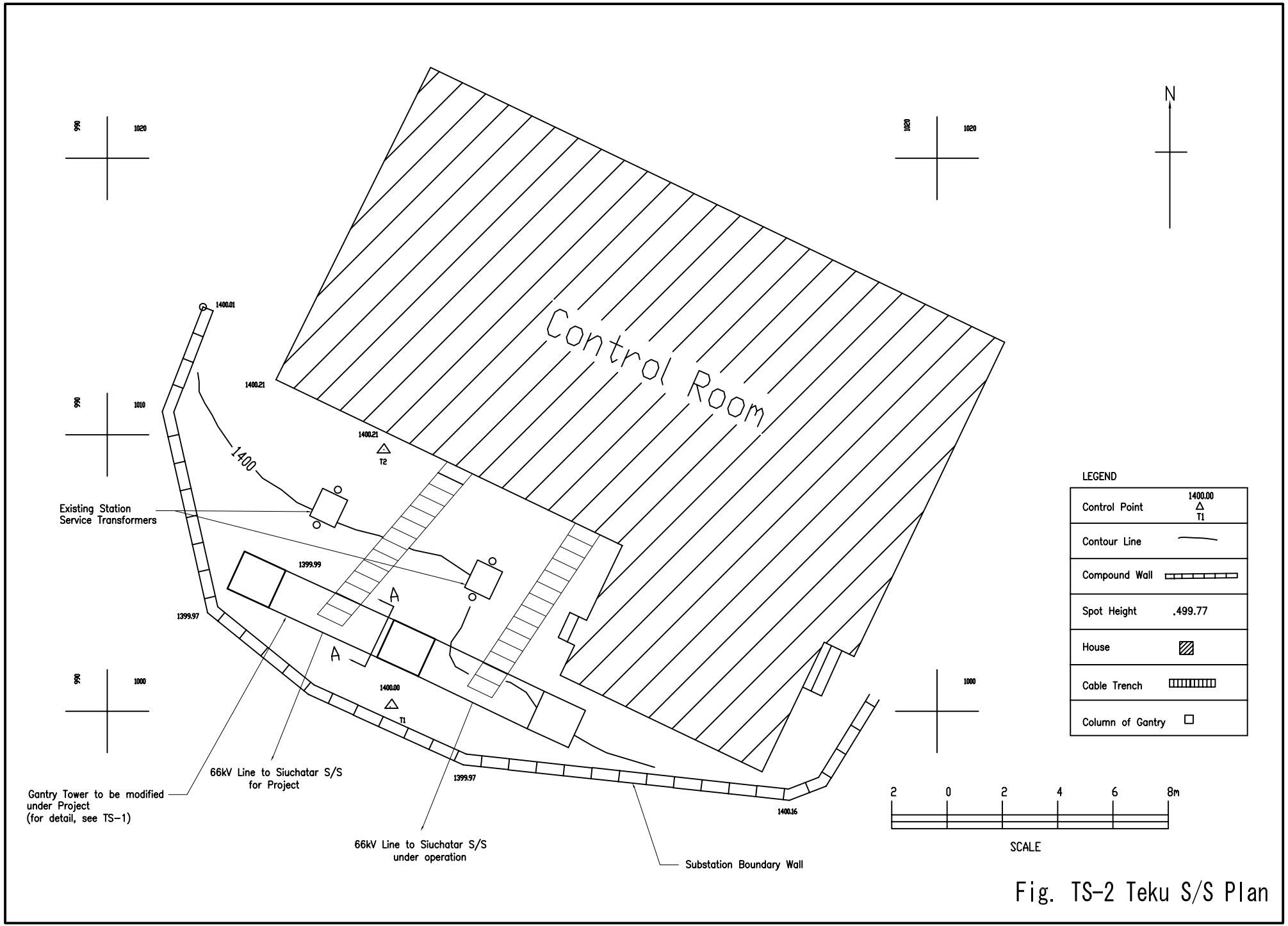
Electrical Equipment before Project
SCALE: Not on Scale



Electrical Equipment before Project
SCALE: Not on Scale

- LEGEND
 LA : Lightning Arrester
 PD : Capacitor Potential Device
 CH : Cable Terminal with Bushing

Fig. TS-1 Teku S/S Cable Termination and Substation Equipment (Section at A-A of Fig. TS-2)



LEGEND

Control Point	1400.00 △ T1
Contour Line	—
Compound Wall	▬▬▬▬▬▬▬▬▬▬
Spot Height	.499.77
House	▨
Cable Trench	▤▤▤▤▤▤▤▤▤▤
Column of Gantry	□

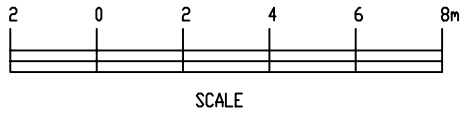


Fig. TS-2 Teku S/S Plan

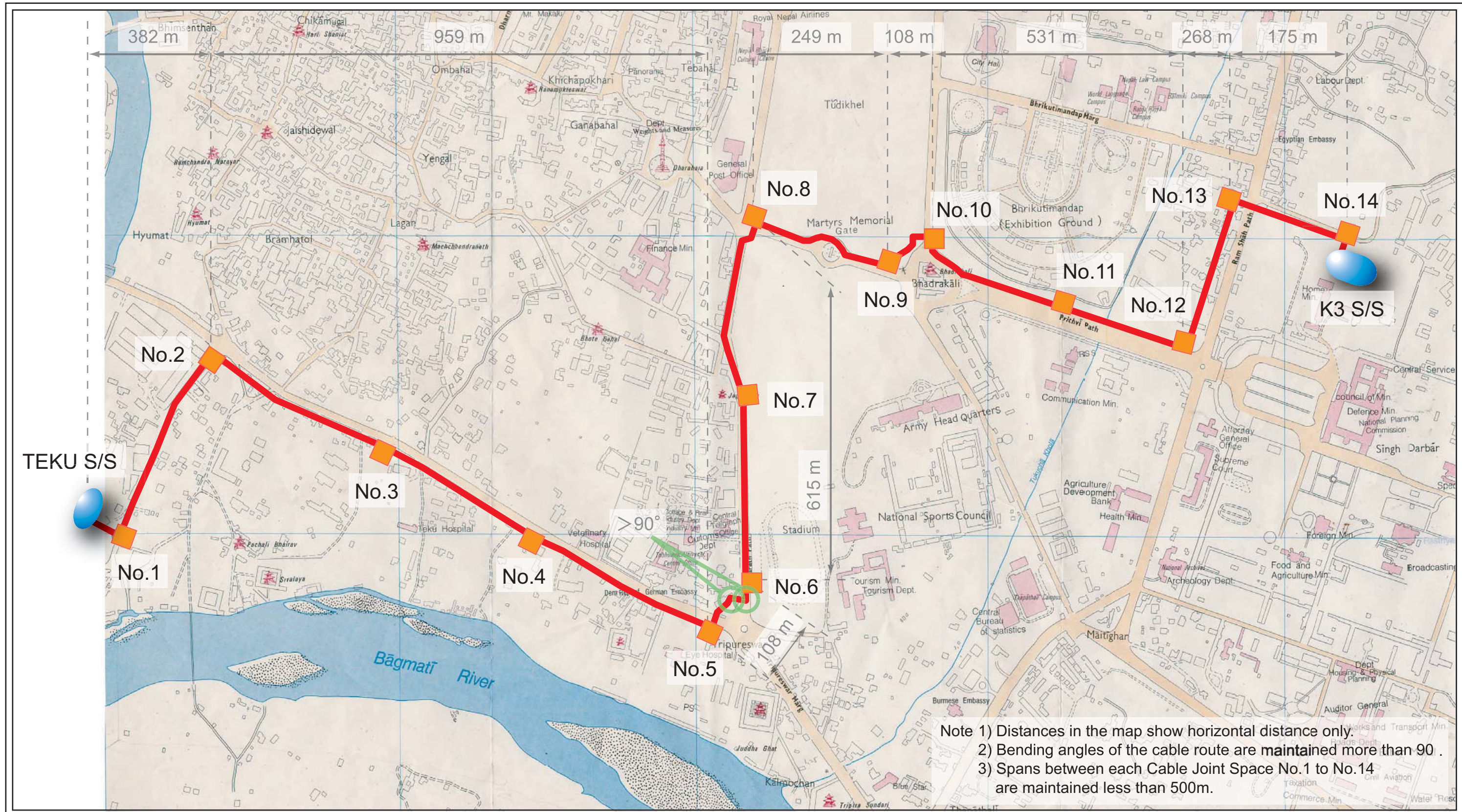
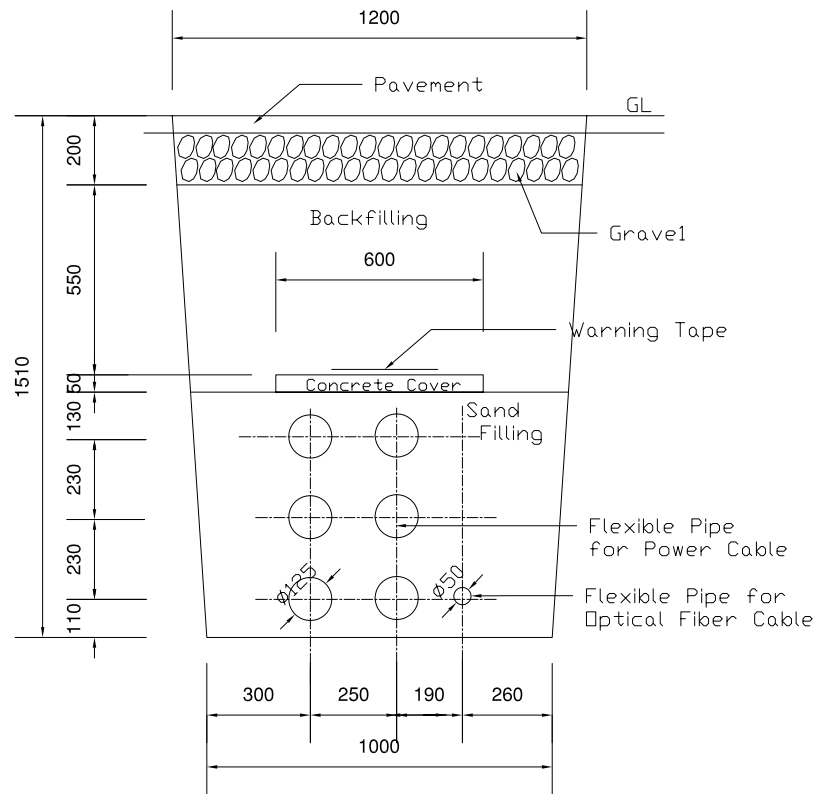
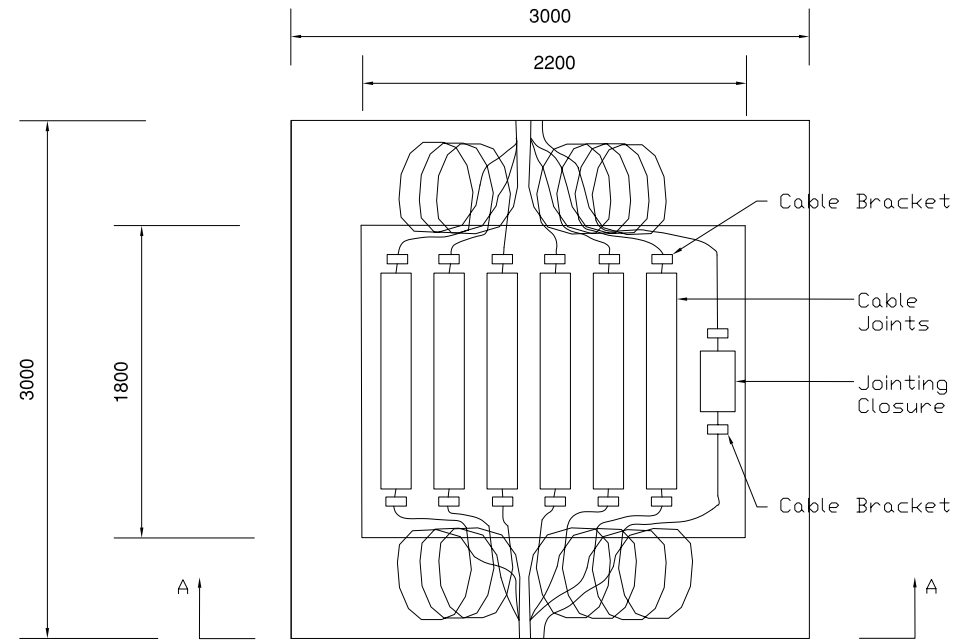


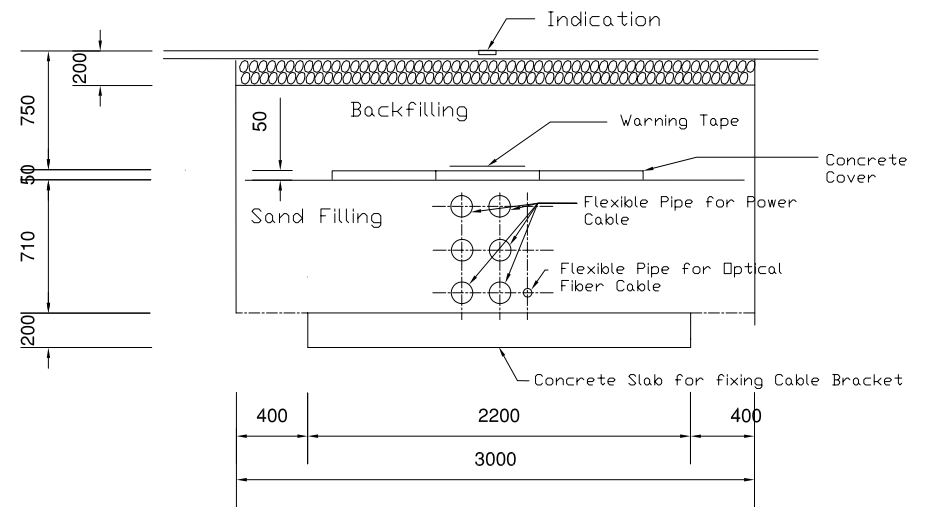
Fig.TL-1 66kV Underground Cable Route and Cable Joint



CABLE CONDUIT SECTION



PLAN



SECTION A-A

JOINT SPACE

Fig. TL-2 T/L Cable Conduit and Joint Space