

**AUTHORITY AND RESPONSIBILITY SHARING  
IN ROAD ADMINISTRATION**

ROAD ADMINISTRATION STATUS	LONG TERM PLANNING	MEDIUM TERM PLANNING	PROGRAMMING	DESIGNING	CONSTRUCTION	MAINTENANCE
National Roads	Central Government	Central Government	Central Government	Central Government	Central Government	Central Government
Provincial Roads	Central Government	Provincial Government	Provincial Government	Provincial Government	Provincial Government	Provincial Government
District (Kabupaten) Roads	Central Government	District (Kabupaten) Government	District (Kabupaten) Government	District (Kabupaten) Government	District (Kabupaten) Government	District (Kabupaten) Government
Municipal (Kota) Roads	Central Government	Municipal (Kota) Government	Municipal (Kota) Government	Municipal (Kota) Government	Municipal (Kota) Government	Municipal (Kota) Government
Village Roads	Central Government	District (Kabupaten) Government	District (Kabupaten) Government	District (Kabupaten) Government	District (Kabupaten) Government	District (Kabupaten) Government
Toll Roads	Central Government	Central Government	Central Government	Central Government	Central Government	Central Government

Sources : Road Law 13/1980

**Minutes of Discussions  
on the Basic Design Study  
on the Project for Bridge Construction for Regional Development  
in the Central and North Sulawesi  
in the Republic of Indonesia**

In February 2002, the Japan International Cooperation Agency (hereinafter referred to as "JICA") dispatched the Basic Design Study Team (the first field survey) on the Project for Bridge Construction for Regional Development in the Central and North Sulawesi (hereinafter referred to as "the Project") to the Republic of Indonesia (hereinafter referred to as "Indonesia"), and through discussions, field survey, and technical examination of the results in Japan, JICA prepared the Interim Report of the study.

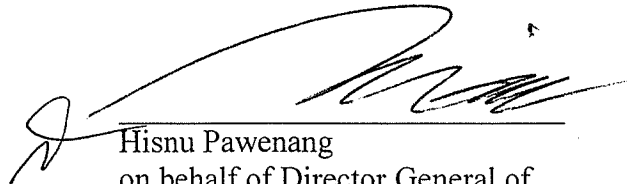
In order to explain and to consult with the officials concerned with the Government of Indonesia on the components of the Interim Report, JICA sent to Indonesia the Basic Design Study Team (the second field survey) (hereinafter to as "the Team"), which was headed by Mr. Junichi Akiyama, an Assistant Resident Representative of the JICA Indonesia Office, and is scheduled to stay in the country from April 21 to July 5, 2002.

With the reference to the Minutes of Discussions dated on February 28, 2002, and in the course of discussions and field survey, both sides confirmed the main items described on the attached sheets. The Team will proceed to further works and prepare the Basic Design Study Report.

Jakarta, June 13, 2002

秋山 純

\_\_\_\_\_  
Junichi Akiyama  
Leader  
Basic Design Study Team  
Japan International Cooperation Agency



\_\_\_\_\_  
Hisnu Pawenang  
on behalf of Director General of  
Regional Infrastructure  
Ministry of Settlement and Regional  
Infrastructure  
Republic of Indonesia

## ATTACHMENT

### 1. Components of Interim Report

The Government of Indonesia agreed and accepted in principle the components of the Interim Report explained by the Team. The Team introduced new scheme which had not been mentioned in the previous Minutes of Discussions, that is "procurement of steel materials of super structure, except the reinforcing steel bar for deck slab, necessary for the construction of the bridge by Indonesian side" (hereinafter referred to as "the Component A"), and "construction of the bridges by the Japanese side" (hereinafter referred to as "the Component B").

However, The Government of Indonesia explained to the Team if the Component A applied and composed many bridges, the Indonesian side might have difficulties in term of budget allocation and technical aspects.

### 2. The site for the second field survey

The tentative project sites are shown in Annex-1 and 2.

### 3. Items Requested by the Government of Indonesia

After discussions with the Team, the following components of the Project were finally requested by the Indonesian side.

1) For the bridges in the Central Sulawesi Province,

To construct bridges or to provide steel materials of super-structure, except reinforcing steel bar for deck slab, necessary for constructing bridges listed in Annex-1.

2) For the bridges in the North Sulawesi Province,

To construct and/or rehabilitate the bridges listed in Annex-2.

However, the final components of the Project will be decided by the Japanese side after further studies in Japan.

### 4. Japan's Grant Aid Scheme

The Indonesian side understands the Japan's Grant Aid scheme and necessary measure to be taken by the Government of Indonesia as explained by the Team described in Annex-4 and Annex-5 of the Minutes of Discussions signed by both sides on February 28, 2002.

### 5. Schedule of the Study

5-1. The consultants will proceed to further studies in Indonesia until July 5, 2002.

5-2. JICA will prepare the draft final report in English and dispatch a mission to Indonesia in order to explain the contents around August 2002.

5-3. In case that the contents of the report is accepted in principle by the Government of Indonesia, JICA will complete the final report and send it to the Government of Indonesia by the end of December, 2002.

## 6. Other Relevant Issues

### 6-1. For the bridges in the Central Sulawesi Province,

6-1-1. Both sides confirmed that the bridges listed in Annex-1 were screened as the bridges for the second field survey in the Central Sulawesi Province with the result of the first field survey. The Team will continue to conduct the detail field survey on each candidate bridge through the second field survey.

6-1-2. Both sides confirmed that the components for the bridges of the Central Sulawesi Province are the Component A and "construction of the bridges by the Japanese side" (hereinafter referred to as "the Component B").

6-1-3-1. Both sides confirmed that the bridges shown below should be improved by the Component A. In case the Indonesian side cannot prepare the budget for Component A, the following bridges should be excluded from the Project.

- Kokobuka V (No.B10), Kokobuka III (No.B8), Kokobuka II (No.B7), Tayadun III (No.B18), Tayadun II (No.B17).

6-1-3-2. And the Team explained that the other bridges shown below would be implemented by the Component A in principle.

- Pujimulyo I (No.B4), Kokobuka I (No.B6), Kokobuka VI(No.B11), Kokobuka VII (No.B12), Bungkudu I (No.B13), Bonobugu I (No.B19), Matinan (No.B21), PatukukiI(No.S26), PatukukiII(No.S27).

However, in case the Team found the difficulties on the technical aspects on the 9 bridges (Pujimulyo I (No.B4), Kokobuka I (No.B6), Kokobuka VI (No.B11), Kokobuka VII (No.B12), Bungkudu I (No.B13), Bonobugu I (No.B19), Matinan (No.B21), Patukuki I (No.S26), Patukuki II (No.S27)) through the second field survey, the Japanese side would examine the possibility of implementation by the Component B. Also in case the Indonesian side had crucial conditions for the implementation by the Component A for the above 9 bridges other than the technical aspects, the Indonesian side would submit the letter, which explain its conditions of above 9 bridges, to the JICA Indonesia Office by July 1, 2002. Then the Japanese side would examine the possibility of implementation by the Component B.

The Japanese side would analysis above difficulties on the technical aspects and the crucial conditions, and decide which bridge would be implemented in the Central Sulawesi Province.

6-1-3-3. The Indonesian side informed to the Team that, in the Component A for 14 bridges (above 5+9 bridges), it would be difficult for Provincial and Prefectural Government to construct the necessary sub-structure and deck slab because of shortage of original capital income and general allocation budget from Central Government. The Central Government will try to allocate the budget for the Project as much as possible.

*Ja* *R*

6-1-4. Both sides confirmed that the Indonesian side should estimate necessary cost of each bridge of Component A, and expect number of bridges of the Component A, and report the results to JICA Indonesia Office by July 15, 2002.

6-1-5. The Indonesian side confirmed concerning the Component A as below,

a) Demolition of Existing Bridges

Demolition of existing bridges shall be done by the Indonesian side in case that a new bridge will be constructed at upstream/downstream side of the existing bridge when there are existing bridges at the Project sites.

b) Transportation of Materials

The Team explained that the Indonesian side should transport materials and equipment supplied under Japan's Grant Aid from the port of embarkation of the materials to each site.

The Indonesian side emphasized the difficulties of its implementation on the aspects of scheduling for the budget allocation and handling the materials from the port of embarkation to the site. Then the Indonesian side requested to the Team that internal transportation from the port of disembarkation to the Project site will be covered by Grant Aid.

c) Accessibility to the Construction Site

The Indonesian side shall maintain sound accessibility to the construction site during the construction stage.

d) Design Work and Construction Works

Design and construction works for substructure, approach roads are the responsibilities of the Government of Indonesia.

e) Construction Period

The Indonesian side shall construct all projected steel bridges within the period of two years after delivery of steel materials purchased under the verified contracts.

f) Allocation of Necessary Budget

The Indonesian side shall allocate the necessary budget to meet the cost of design and construction work for projected bridges.

The Indonesian side informed that the budget allocation of the local government would vary from the Prefectural government to the others. It is depended on the original source of fund and the budget allocation from the Central Government.

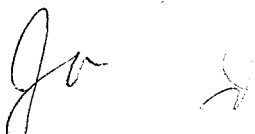
6-1-6. The Indonesian side confirmed concerning the Component B as below,

a) Demolition of Existing Bridges

Demolition of existing bridges shall be done by the Indonesian side in case that a new bridge will be constructed at upstream/downstream side of the existing bridge when there are existing bridges at the Project sites.

b) Accessibility to the Construction Site

The Indonesian side shall maintain sound accessibility to the construction site during the



construction stage.

6-2. For the bridges in the North Sulawesi Province,

6-2-1. Both sides confirmed that the Poigar Bridge and the Megawati Bridge were screened as the candidate bridges for the North Sulawesi Province with the result of the first field survey.

6-2-2. Both sides confirmed that the Poigar Bridge should be improved by the reconstruction of the P1 pier and necessary provision works against sinking and leaning of P2 and P3 pier.

6-2-3. Both sides confirmed that the component for Megawati Bridge should be examined through the second field survey.

6-3. Both sides confirmed that there would be no duplication of requests for the reconstruction of Poigar Bridge between the Projects and other donors, including the IBRD.

6-4. Concerning the land acquisition,

6-4-1. The Indonesian side explained rough estimation of cost and period necessary for the land acquisition for the Project as attached Annex-3, and had intention to conduct the land acquisition with the budget for 2003.

6-4-2-1. The Indonesian side explained period necessary for the land acquisition for the bridges in Central Sulawesi as attached Annex-3, and had intention to conduct the land acquisition with the budget for 2003.

6-4-2-2. The Team would submit the tentative plan showing the necessary area of land acquisition for the bridges in the Central Sulawesi by July 1, 2002. The Indonesian side would estimate necessary cost based on its plan, and report to the JICA Indonesia Office by July 15, 2002. However, both sides confirmed that the Indonesian side should estimate cost afresh based on the draft final report and take necessary procedure for the budget allocation.

6-5. The Indonesian side shall take necessary procedures for the Environmental Impact Assessment (EIA) by the end of September 2002, if necessary.

6-6. The Indonesian side shall take necessary procedures to obtain the permissions for implementation of the Project, such as the permission for construction of bridges, diversion of the utility lines, etc.

6-7. The Indonesian side shall secure enough budget and personnel necessary for the maintenance of the bridges implemented by the Project, including the periodical maintenance work after the completion of the Project.

6-8. The Team explained that the internal transportation of the materials for the Component B from

the port of disembarkation to the project site would be covered by the Grant Aid, and the Indonesian side accepted it.

6-9. Concerning the demarcation of undertakings between the Central Government and Provincial Government,

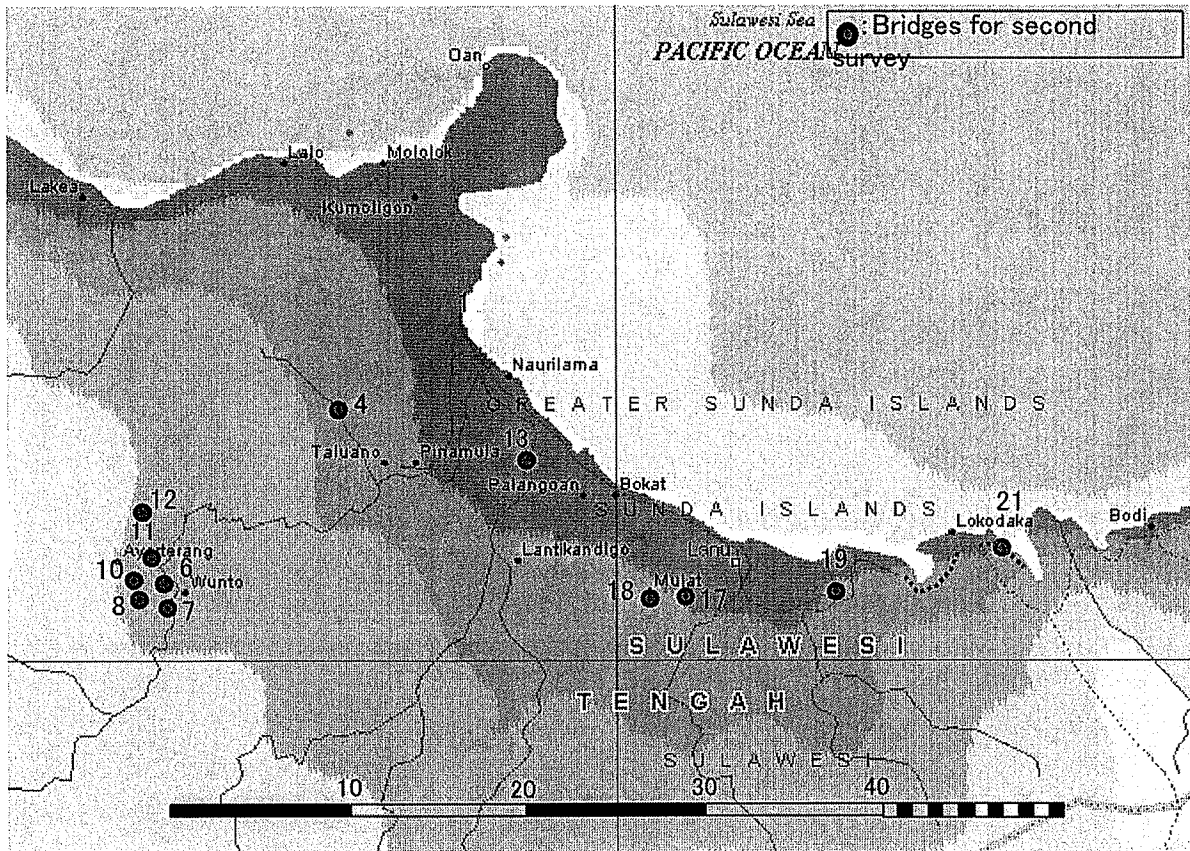
6-9-1. Both sides confirmed that the Indonesian side agreed to arrange the budget allocation and take necessary procedures for the Project in accordance with the Memorandum of Understandings signed on March 22, 2002, between the Central Government and the Provincial Government of North Sulawesi.

6-9-2. Even if the Component A would be implemented for the Project, the Indonesian side would consider the demarcation of the undertakings between the Central Government and Provincial Government with the reference of the Minutes of Understandings, signed on March 2002, between the Central Government and the Provincial Government of Central Sulawesi.

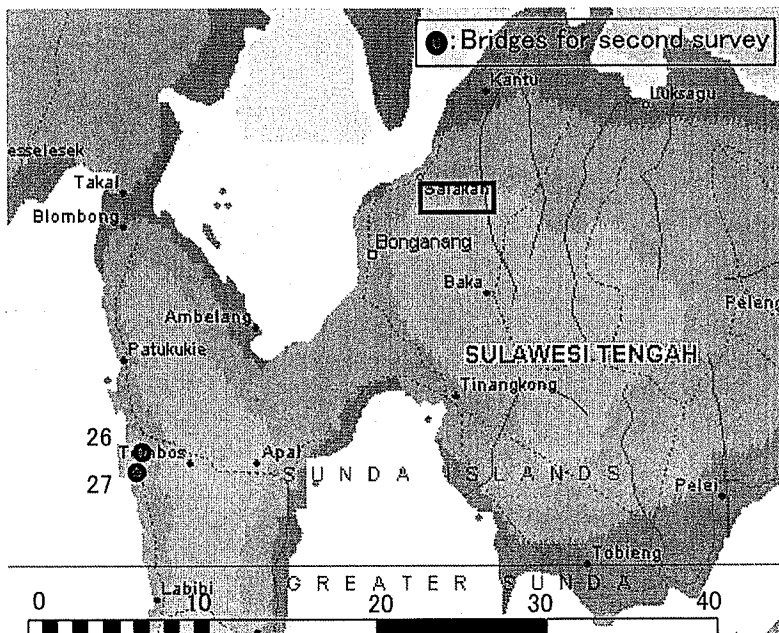
*Ju*

*A*

Location Map of Bridges for Second Survey In Buol Area



Location Map of Bridges for Second Survey In Banggai Kepulauan Area



Bridges for second field survey In Buol Area

No	Bridge Name	Length (m)
B4	PUJIMULYO	40.0
B6	KOKOBUKA	90.0
B7	KOKOBUKA	10.0
B8	KOKOBUKA	16.0
B10	KOKOBUKA	15.0
B11	KOKOBUKA	20.0
B12	KOKOBUKA	60.0
B13	BUNGKUDU	35.0
B17	TAYADUN II	20.0
B18	TAYADUN III	18.0
B19	BONOBOGU	25.0
B21	MATINAN	35.0
Total	12 bridges	384.0

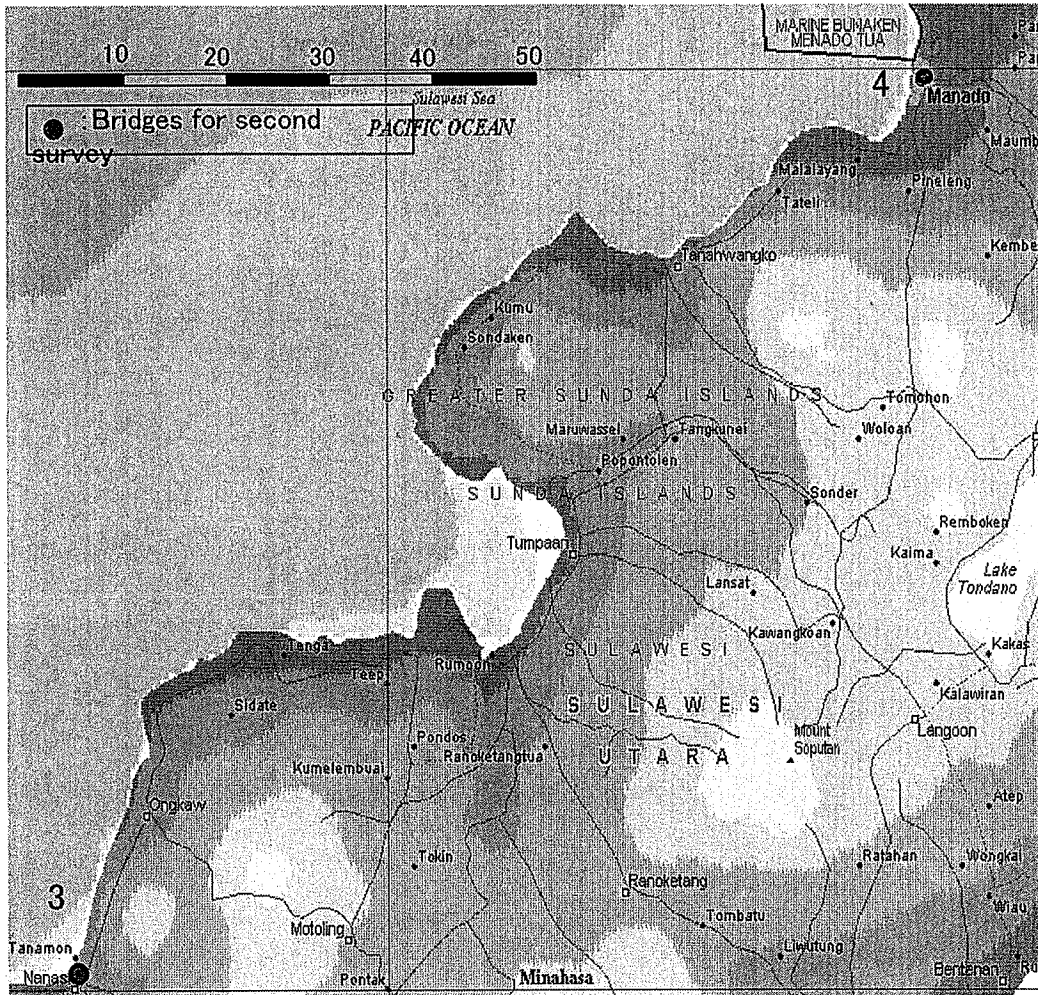
Bridges for second survey In Banggai Kepulauan Area

No	Bridge Name	Length (m)
S26	PATUKUKI I	45.0
S27	PATUKUKI II	7.0
Total	2 bridges	52.0

*Jr*



Location Map of Bridges for Second Survey in North Sulawesi Province



Bridges for second field survey in North Sulawesi Province

No	Bridge Name	Length(m)
3	POIGAR BRIDGE	120
4	MAGAWATI BRIDGE	120

*Jca*  
*rc*

**THE TENTATIVE SCHEDULE FOR LAND ACQUISITION**  
 (on condition Government of Japan will assume to give some approval of the Construction before the December)

No.	Activity	The Organization in Charge	Jun.	Jul.	Aug.	Sep.	Oct.	Nov.	Dec.	Jan.	Feb.	Mar.	Apr.	REMARKS
1	Inventory (Draft Design, Field, Measurement)	DINAS Kimpraswil (for bridges in North Sulawesi) Provincial Government (for bridges in Central Sulawesi)												
2	Process Allocation Budget	Kimpraswil (Central Government) (for bridges in North Sulawesi) Provincial Government (for bridges in Central Sulawesi)												
3	Approved budget													
4	Budget Effective, Establish Committee													
5	Negotiation and Payment													

*Ja*

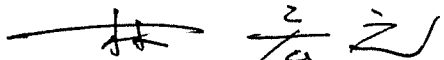
**Minutes of Discussions  
on the Basic Design Study  
on the Project for Bridge Construction for Regional Development  
in the Central and North Sulawesi  
in the Republic of Indonesia  
(Explanation on the Draft Final Report)**


In February and June 2002, the Japan International Cooperation Agency (hereinafter referred to as "JICA") dispatched the Basic Design Study Team (the first and second field survey) on the Project for Bridge Construction for Regional Development in the Central and North Sulawesi (hereinafter referred to as "the Project") to the Republic of Indonesia (hereinafter referred to as "Indonesia"), and through discussions, field survey, and technical examination of the results in Japan, JICA prepared the Draft Final Report of the study.

In order to explain and to consult with the officials concerned of the Government of Indonesia on the components of the Interim Report, JICA sent to Indonesia the Basic Design Explanation Team (hereinafter to as "the Team"), which was headed by Mr. Hiroyuki Hayashi, an officer of the Third Project Management Division, the Grant Aid Management Department, JICA, and is scheduled from August 25 to September 4, 2002.

As a result of discussions, both sides confirmed the main items described on the attached sheets.

Jakarta, August 29, 2002

  
\_\_\_\_\_  
Hiroyuki Hayashi  
Leader  
Basic Design Explanation Team  
Japan International Cooperation Agency

  
\_\_\_\_\_  
Sudarmadji Koesno  
on behalf of Director General of  
Regional Infrastructure  
Ministry of Settlement and Regional  
Infrastructure  
Republic of Indonesia

## ATTACHMENT

### 1. Components of the Draft Final Report

The Indonesian side agreed and accepted in principle the components of the Draft Final Report explained by the Team.

### 2. Japan's Grant Aid Scheme

The Indonesian side understands the Japan's Grant Aid scheme and the necessary measures to be taken by the Indonesian side as explained by the Team and described in the Annex-4 and Annex-5 of the Minutes of Discussions signed by both sides on February 28, 2002.

### 3. Schedule of the Study

JICA will complete the final report in accordance with the confirmed items and send it to the Indonesian side by the end of December, 2002.

### 4. Organizations for the Project

The Indonesian side explained the organization for the Project as follows and Annex-1-1.

4-1. Responsible Ministry: The Ministry of Settlement and Regional Infrastructure (MOS&RI)

4-2. Implementing Agency: Director General of Regional Infrastructure, MOS&RI (DGRI)

4-3. The Indonesian side established the Steering Committee for the Project for smooth implementation of each bridge. The members of the Committee are shown in Annex-1-2. The Committee shall be responsible for all undertakings by the Indonesian side.

4-4. The Indonesian side confirmed that the list of burden sharing for all undertakings by the Indonesian side as per Annex-2-1 and 2-2. The Indonesian side shall amend the Memorandum of Understanding (MOU), which was signed between the DGRI and the Central and North Sulawesi Provincial Government on March, 2002, respectively, among all related agencies in accordance with the above-mentioned list, and submit the photocopies to the Japanese side through the JICA Indonesia Office by the end of September, 2002.

### 5. Budget and implementing schedule

The Indonesian side shall allocate the necessary budget from FY2003 to FY2006 to meet the cost for all the undertakings by the Indonesian side. As a condition for the Japan's Grant Aid to be extended, the Indonesian side shall complete the payments for all the undertakings by the Indonesian side in accordance with the schedule shown in Annex-3-1 and 3-2.

### 6. Other Relevant Issues

6-1. For the Central Sulawesi Province, in case a condition for the Japan's Grant Aid to be extended, the following shall be carried out by both sides.

(1) The six (6) bridges shown below shall be improved by "the Component A," that is "Procurement of steel materials of super structure by the Japan's Grant Aid, except the reinforcing steel bar for deck slab, necessary for the construction of the bridges by the Indonesian side".

Kokobuka V (No. B10), Kokobuka III (No. B8), Kokobuka II (No. B7), Tayadun III (No. B18), Tayadun II (No. B17) and Bonobuku I (No. B19)

(2) The eight (8) bridges shown below shall be improved by "the Component B," that is "Construction of the bridges by the Japan's Grant Aid".

Pujimulyo I (No. B4), Kokobuka I (No. B6), Kokobuka VI (No. B11), Kokobuka VII (No. B12), Bungkudu I (No. B13), Matinan (No. B21), Patukuki I (No. S26), Patukuki II (No. S27)

(3) Transportation of the materials steel of the Component A supplied under the Japan's Grant Aid from the port of embarkation to the stockyard in the Buol area will be covered by the Grant Aid in order to secure the construction schedule.

6-2. For the North Sulawesi Province, in case a condition for the Japan's Grant Aid to be extended, the following shall be carried out by both sides.

(1) The Megawati bridge shall be improved by reconstruction of the whole bridge by the Japan's Grant Aid.

(2) The Poiger bridge shall be improved by the reconstruction of the P1 pier and necessary provision works against sinking and leaning of P2 and P3 pier by the Japan's Grant Aid.

(3) The Indonesian side shall make a traffic plan for the detouring route(s) for carriages and obtain necessary permission for the route(s) during the construction period of the Megawati bridge. The Indonesian side shall clear the piers and structures for the water pipe and fix the pipe to the superstructure of the bridge after completion of the construction works of the bridge.

(4) The Indonesian side understands that the warranty for the Poiger bridge should be considered as an obligation of the constructor of newly reconstructed portion, and the warranty should be applicable to the above-mentioned portion only.

6-3. The Indonesian side shall take necessary procedures for the Environmental Impact Assessment (EIA) and submit the following to the Japanese side through the JICA Indonesia Office.

(1) The name of the bridge(s), which is(are) required for the EIA procedures and detailed schedule of its execution by September 6, 2002.

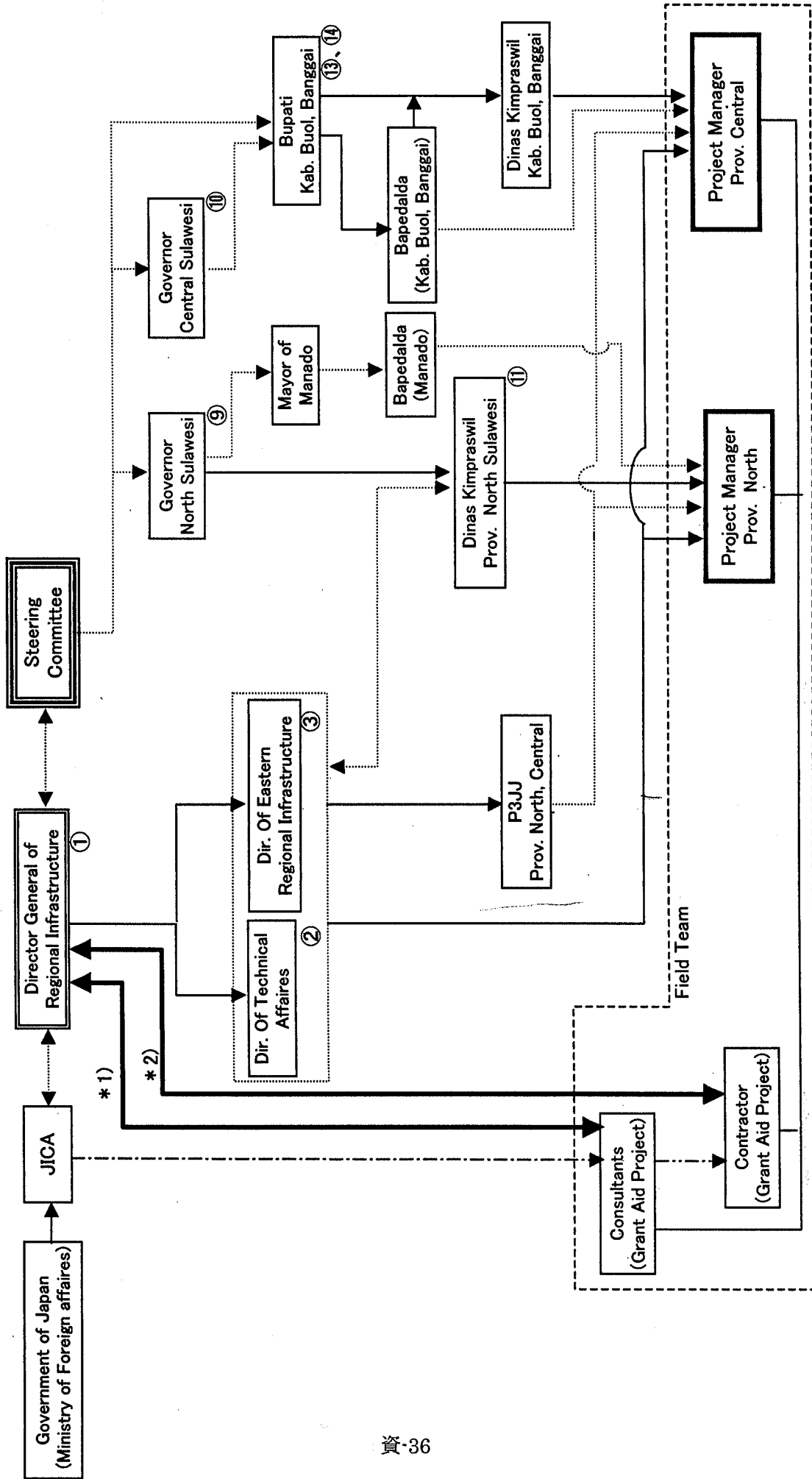
(2) The photocopies of the letter(s) of approval issued by the concerned Authority(ies) by the end of September, 2002.

6-4. The Project Manager (PM) of the Project for the Central and North Sulawesi, who will sign on the contracts for the Project, shall be designated among the staff of the MOS&RI and assigned by the MOS&RI. The PM shall manage the Project on behalf of the DGRI, MOS&RI.

6-5. The Indonesian side shall inform and/or explain the improvement plan of each bridge to the people living in each area in advance in order to obtain their understanding and support.

6-6. The Indonesian side requested the Team to carry out the counterpart training in Japan on the management of the maintenance of the bridges as a technical cooperation by JICA, and the Indonesian side understands that another official request will be needed to submit from the Indonesian side to the Japanese side through the JICA Indonesia Office.

# BRIDGE CONSTRUCTION FOR REGIONAL DEVELOPMENT IN THE CENTRAL AND NORTH SULAWESI PROJECT ORGANIZATION



2

## MEMBER OF STEERING COMMITTEE

- |  |             |
|--|-------------|
| ① DIR. GEN. OF REGIONAL INFRASTRUCTURE                 | (CHAIRMAN)  |
| ② DIR. OF TECHNICAL AFFAIR                             | (SECRETARY) |
| ③ DIR. OF EASTERN REGIONAL INFRASTRUCTURE              |             |
| ④ DIR. OF PLANNING AND FOREIGN COOPERATION BUREAU      |             |
| ⑤ DIR. OF REGIONAL AND TRANSMIGRATION                  | (BAPPENAS)  |
| ⑥ DIR. OF TRANSPORTATION                               | (BAPPENAS)  |
| ⑦ DIR. OF EXTERNAL FUND                                | (MOF)       |
| ⑧ DIR. OF SYNCHRONIZATION OF REGIONAL DEVELOPMENT      | (MOHA)      |
| ⑨ CHIEF OF BAPPEDA, NORTH SULAWESI PROVINCE            |             |
| ⑩ CHIEF OF BAPPEDA, CENTRAL SULAWESI PROVINCE          |             |
| ⑪ CHIEF OF DINAS KIMPRASWIL, NORTH SULAWESI PROVINCE   |             |
| ⑫ CHIEF OF DINAS KIMPRASWIL, CENTRAL SULAWESI PROVINCE |             |
| ⑬ CHIEF BAPPEDA BUOL, CENTRAL SULAWESI PROVINCE        |             |
| ⑭ CHIEF BAPPEDA BANGGAI, CENTRAL SULAWESI PROVINCE     |             |

## List of undertakings of Each Agencies for Component A

Item	Japan	JKT Kimpraswil/ Bappenas	Central Sulawesi		Remarks
			Province	Kab. Buol	
<b>1. General</b>					
1.1		DGRI			M/D No.1: 8) M/D No.1 Annex-5, 4
1.2		DGRI DGRI			M/D No.1: 9) M/D No.1 Annex5, 4
<b>2. Implementation</b>					
2.1				DKK	M/D No.1: 5) (1) M/D No.1: Annex-5, 1
2.2				DKK	M/D No.1: 5) (2)
2.3				DKK	M/D No.1: 5) (3)
2.4					M/D No.1: 5) (4) M/D No.1 Annex-5, 5 M/D No.2: 6-8
	O				
		DTA			
	O				
2.5		DTA		DKK	M/D No.1: 5) (5) M/D No.1: Annex-5, 6
2.6		DTA	DKP	DKK	M/D No.1: 5) (6) M/D No.1: Annex-5, 7
2.7				DKK	M/D No.1: Annex-5, 2
2.8				DKK	M/D No.1: Annex-5, 3
2.9				DKK	M/D No.1: Annex-5, 8



2.10	To bear all the expense, other than those to be borne by Grant Aid, necessary for construction of facilities.		DERI		DKK	M/D No.1: Annex-5, 9
2.11	Accessibility to the construction site: The Indonesian side shall maintain sound accessibility to the construction site during the construction stage.			DKP	DKK	M/D No.1: 8, (5) b) M/D No.2: 6-1-5 c)
<b>3. Confirmation</b>						
3.1	Budget preparation for Land acquisition & compensation, Consultants services, Civil works, Utility relocation and others (Local portion).		Bapenas *1		DKK *2	*1 Budget allocation *2 Budget request
3.2	Implementation for Land acquisition & compensation.				DKK	
3.3	Consultant Contract for D/D and C/S (Local Portion)			P3JJ		
3.4	Consultant Contract for D/D (Grant Aid Portion)		DGRI			This M/D clause 6-4.
3.5	Civil Works Contract (Local Portion)				DKK	
3.6	Procurement Contract (Grant Aid Portion)		DGRI			This M/D clause 6-4.
3.7	Preparation of Stockyard for Steel Girder				DKK	
3.8	Utility Relocation				DKK	

## LEGEND :

- DGRI = Director General of Regional Infrastructure  
 DTA = Director of Technical Affairs  
 DERI = Director of Eastern Regional Infrastructure  
 DKP = Dinas Kimpraswil Propinsi  
 DKK = Dinas Kimpraswil Kabupaten  
 P3JJ = Project Office of Road and Bridge Design and Supervision

## List of undertakings of Each Agencies for Component B

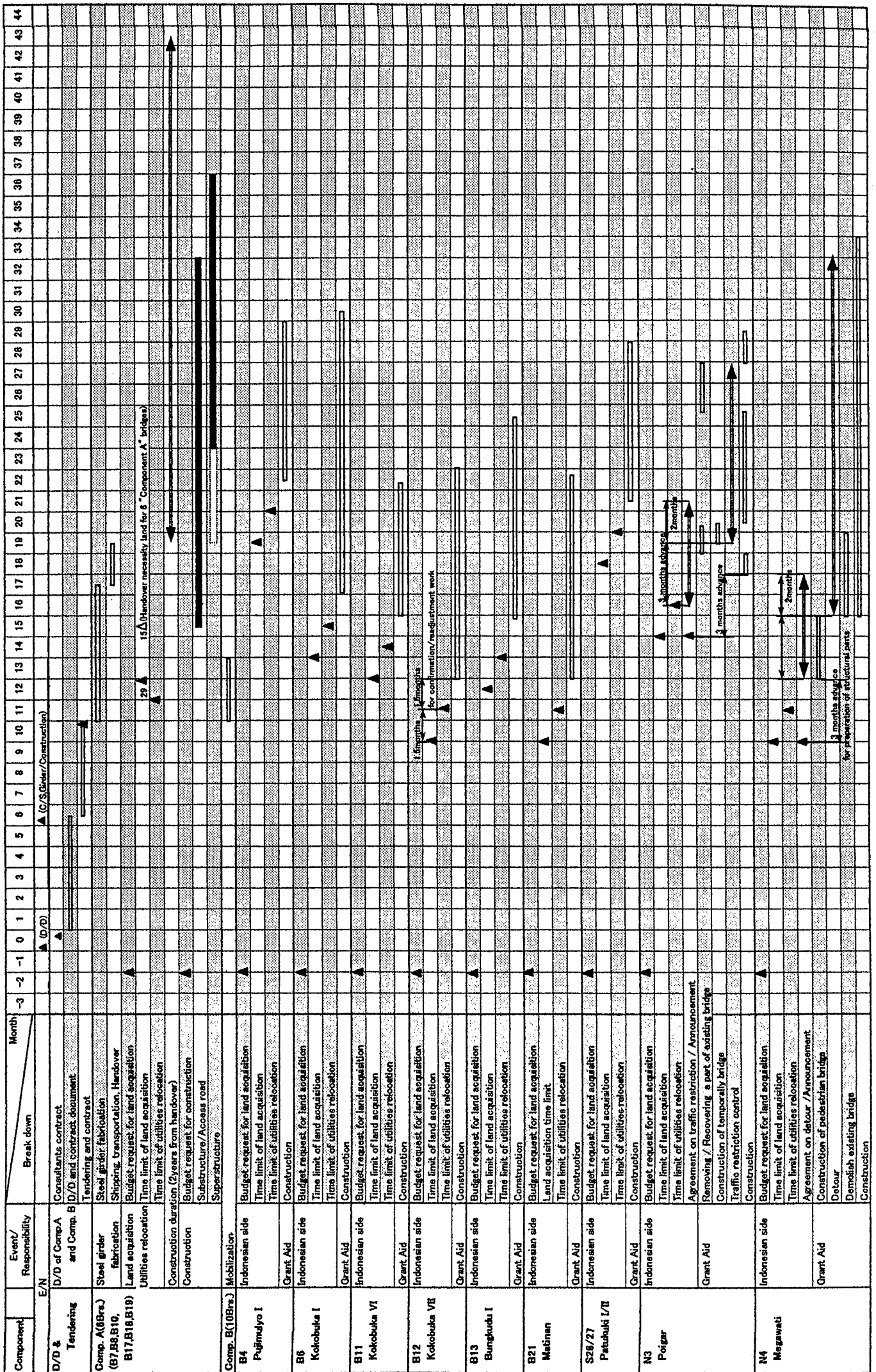
Item	Japan	JKT Kimpraswil/ Bappenas	Central Sulawesi			North Sulawesi	Remarks
			Province	Kab. Buol	Kab. Banggai Kepulauan		
<b>1. General</b>							
1.1	B/A: Bank Arrangement	DGRI					M/D No.1: 8) M/D No.1 Annex-5, 4
1.2	A/P: Authorization to Pay a) Advising Commission of A/P b) Payment Commission	DGRI DGRI					M/D No.1: 9) M/D No.1 Annex5, 4
<b>2. Implementation</b>							
2.1	To secure land necessary for the sites of the Project and to clear, level and reclaim the land prior to commencement of the construction.			DKK	DKK	DKP	M/D No.1: 5) (1) M/D No.1: Annex-5, 1
2.2	To provide facilities for the distribution of electricity, water supply and drainage and other incidental facilities in and around the sites.			DKK	DKK	DKP	M/D No.1: 5) (2)
2.3	To secure buildings prior to the procurement in case the installation of the equipment.			DKK	DKK	DKP	M/D No.1: 5) (3)
2.4	To ensure all the expenses and prompt excursion for unloading, customs clearance at the port of disembarkation and internal transportation of the product purchased under the Grant Aid.						M/D No.1: 5) (4) M/D No.1 Annex-5, 5 M/D No.2: 6-8
	1) Marine (Air) transportation of the products from Japan to the recipient country.	O					
	2) Tax exemption and customs clearance of the products at the port of disembarkation.		DTA				
	3) Internal transportation from the port of disembarkation to the project site.	O					
2.5	To exempt Japanese nationals from Customs duties, internal taxes and other fiscal levies which will be imposed in the recipient country with respect to the supply of the products and services under the Verified Contracts.		DTA				M/D No.1: 5) (5) M/D No.1: Annex-5, 6
2.6	To accord Japanese nationals, whose services may be required in connection with the supply of the products and services under Verified contracts, such facilities as may be necessary for their entry into the recipient country and stay therein for the performance of their work.		DTA	DKK	DKK	DKP	M/D No.1: 5) (6) M/D No.1: Annex-5, 7
2.7	To clear, level and reclaim the sit before commencement of the construction when needed.			DKK	DKK	DKP	M/D No.1: Annex-5, 2
O	To construct gates and fence in and around the site when needed			DKK	DKK	DKP	M/D No.1: Annex-5, 3
2.9	To maintain and use properly and effectively the facilities constructed and equipment provided under the Grant Aid.			DKK	DKK	DKP	M/D No.1: Annex-5, 8

2.10	To bear all the expense, other than those to be borne by Grant Aid, necessary for construction of facilities.		DERI		DKK	DKK	DKP	M/D No.1: Annex-5, 9
2.11	Accessibility to the construction site: The Indonesian side shall maintain sound accessibility to the construction site during the construction stage.			DKP	DKK	DKK	DKP	M/D No.1: 8, (5) b) M/D No.2: 6-1-5 c)
<b>3. Confirmation</b>								
3.1	Budget preparation for Land acquisition & compensation, Utility relocation and others.		Bappenas *1		DKK *2	DKK *2	DKP *2	*1 Budget allocation *2 Budget request
3.2	Implementation for Land acquisition & compensation.				DKK	DKK	DKP	
3.3	Consultants Contract for D/D & C/S		DGRI					This M/D clause 6-4.
3.4	Civil works Contract		DGRI					This M/D clause 6-4.
3.5	Utility Relocation				DKK	DKK	DKP	

## LEGEND :

- DGRI = Director General of Regional Infrastructure  
 DTA = Director of Technical Affairs  
 DERI = Director of Eastern Regional Infrastructure  
 DKP = Dinas Kimpraswil Propinsi  
 DKK = Dinas Kimpraswil Kabupaten

Project Schedule (Tentative)



B

FF

## Land Acquisition and Compensation Schedule for Component B

Br. No.	Br. Name	Establishment of Committee	Preparation of Budget	Starting Date	Completion Date	Hand Over Date	Remarks
B4	Pujimulyo I	01-Feb-03	05-Mar-03	01-Apr-03	15-Jun-04	15-Sep-04	Kab. Buol
B6	Kokobuka I	01-Feb-03	05-Mar-03	01-Apr-03	31-Dec-03	30-Mar-04	Kab. Buol
B11	Kokobuka VI	01-Feb-03	05-Mar-03	01-Apr-03	30-Nov-03	29-Feb-04	Kab. Buol
B12	Kokobuka VII	01-Feb-03	05-Mar-03	01-Apr-03	31-Aug-03	30-Nov-03	Kab. Buol
B13	Bungkudu I	01-Feb-03	05-Mar-03	01-Apr-03	15-Nov-03	15-Feb-04	Kab. Buol
B21	Matinan	01-Feb-03	05-Mar-03	01-Apr-03	31-Aug-03	30-Nov-03	Kab. Buol
S26	Patukuki I	01-Feb-03	05-Mar-03	01-Apr-03	15-May-04	15-Aug-04	Kab. Banggai Kepulauan
S27	Patukuki II	01-Feb-03	05-Mar-03	01-Apr-03	15-May-04	15-Aug-04	Kab. Banggai Kepulauan

## Land Acquisition and Compensation Schedule for Component A

Br. No.	Br. Name	Establishment of Committee	Preparation of Budget	Starting Date	Completion Date	Hand Over Date	Remarks
B7	Kokobuka II	01-Feb-03	15-Mar-03	01-Apr-03	29-Nov-03	15-Feb-04	Kab. Buol
B8	Kokobuka III	01-Feb-03	15-Mar-03	01-Apr-03	29-Nov-03	15-Feb-04	Kab. Buol
B10	Kokobuka V	01-Feb-03	15-Mar-03	01-Apr-03	29-Nov-03	15-Feb-04	Kab. Buol
B17	Tayadun II	01-Feb-03	15-Mar-03	01-Apr-03	29-Nov-03	15-Feb-04	Kab. Buol
B18	Tayadun III	01-Feb-03	15-Mar-03	01-Apr-03	29-Nov-03	15-Feb-04	Kab. Buol
B19	Bonobogu I	01-Feb-03	15-Mar-03	01-Apr-03	29-Nov-03	15-Feb-04	Kab. Buol

## Land Acquisition and Compensation Schedule for Component B

Br. No.	Br. Name	Establishment of Committee	Preparation of Budget	Starting Date	Completion Date	Hand Over Date	Remarks
3	Poigar	01-Feb-03	15-Mar-03	01-Apr-03	31-Jan-04	30-Apr-04	
4	Megawati	01-Feb-03	15-Mar-03	01-Apr-03	31-Aug-03	30-Nov-03	

