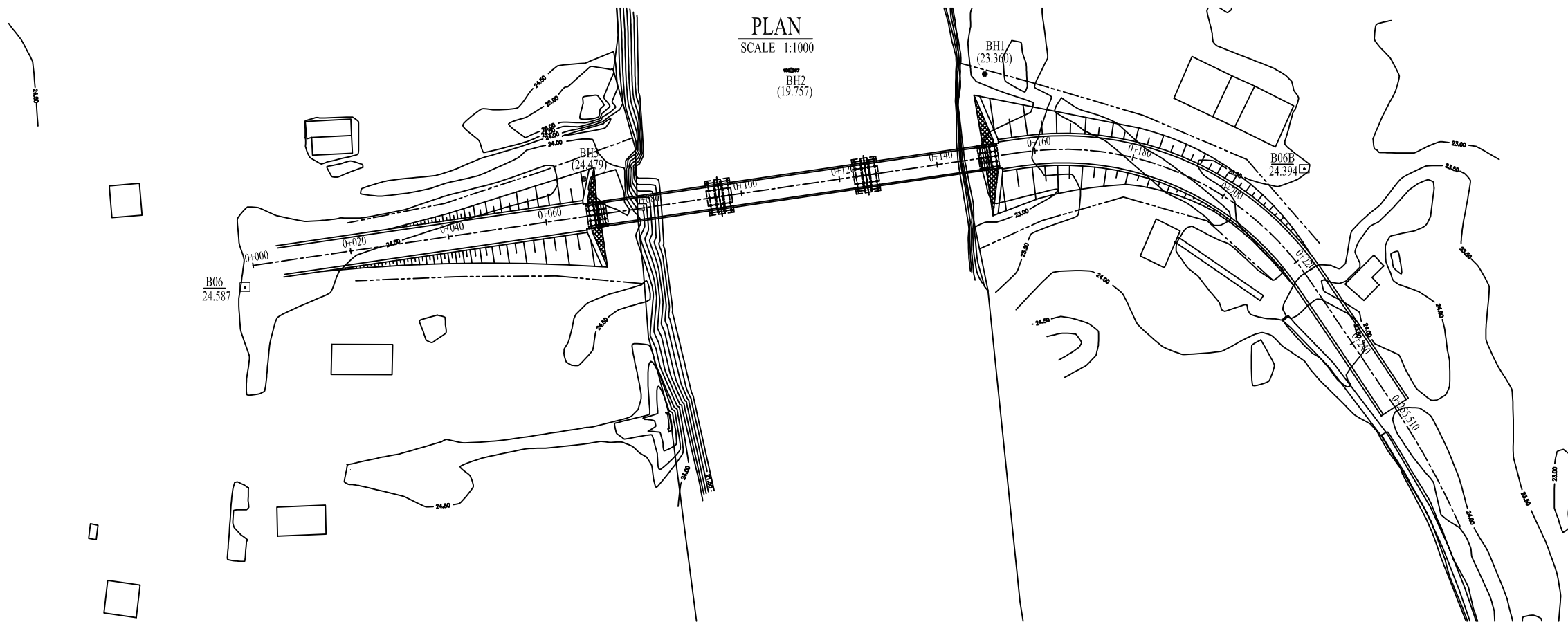


BR.NO.B6 KOKOBUKA I GENERAL VIEW OF THE SITE

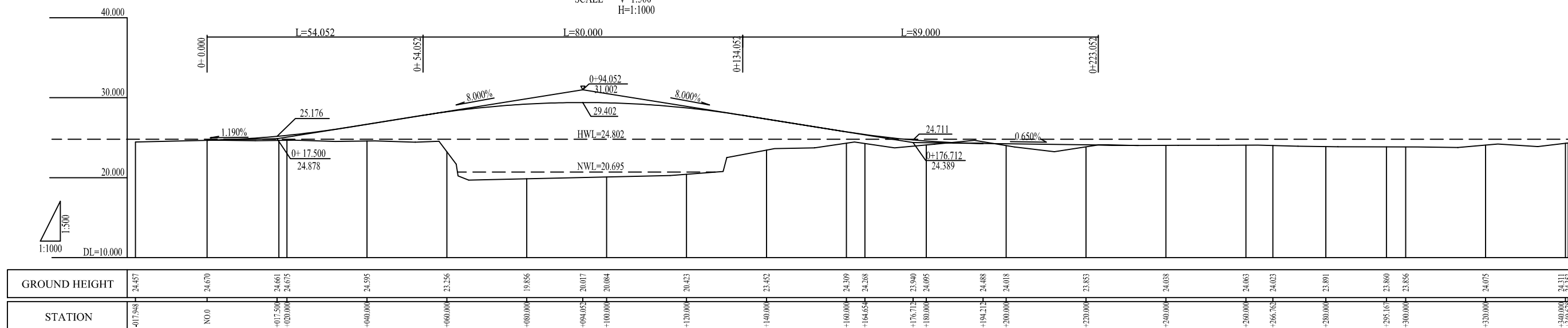
SECTION	SCALE	DRAWING NO.	SHEET NO.
			14 OF 29
BR. NO. B6 KOKOBUKA I GENERAL VIEW OF THE SITE			

PLAN
SCALE 1:1000
BH1 (23.360)
BH2 (19.757)



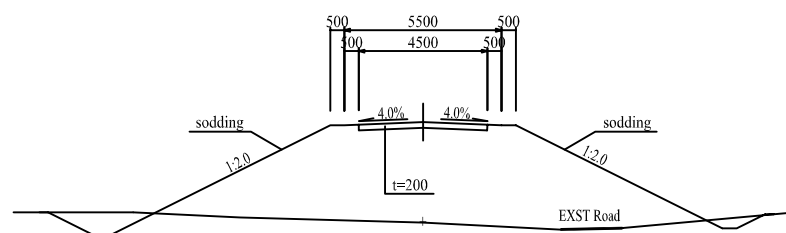
	X	Y	Z
BM B06	307801.585	113996.547	24.587
BM B06A	307789.772	114056.772	24.387
BM B06B	308016.077	114020.507	24.366

PROFILE
SCALE V=1:500
H=1:1000



TYPICAL CROSS SECTION

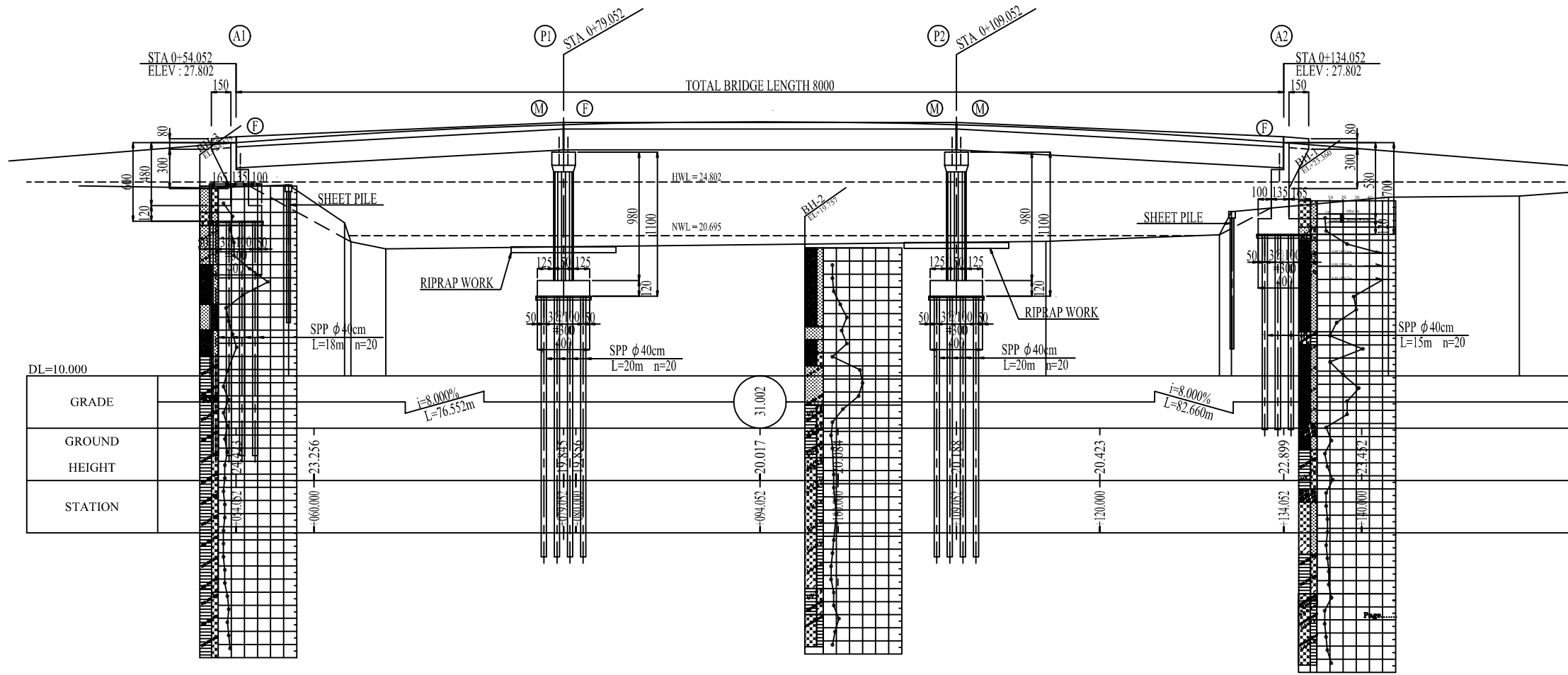
SCALE 1:250



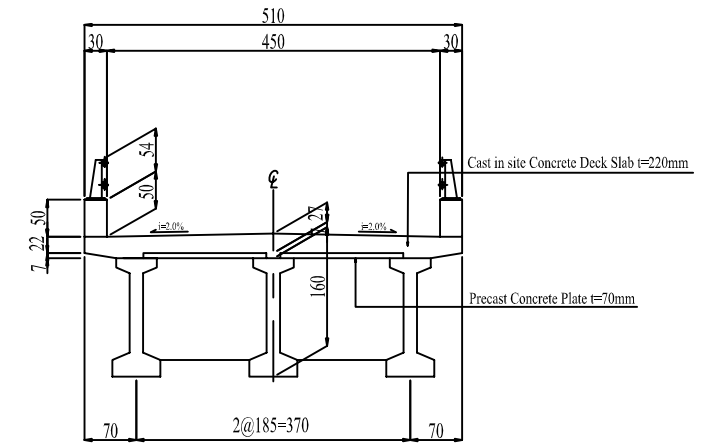
BR.NO.B6 KOKOBUKA I GENERAL VIEW OF THE BRIDGE

SECTION	SCALE	DRAWING NO.	SHEET NO.
	1/100, 1/400		15 OF 29
BR.NO.B6 KOKOBUKA I			
GENERAL VIEW OF THE BRIDGE			

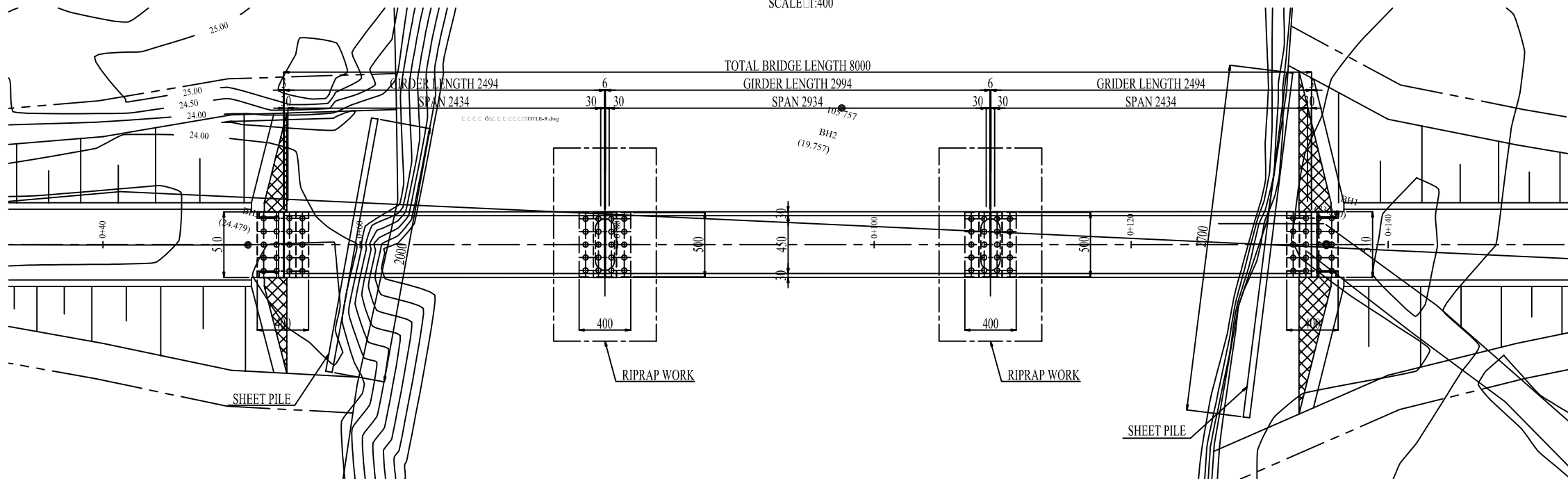
PROFILE
SCALE: 1:400



CROSS SECTION FOR PC GIRDER
SCALE: 1:100



PLAN
SCALE: 1:400



DESIGN CRITERIA

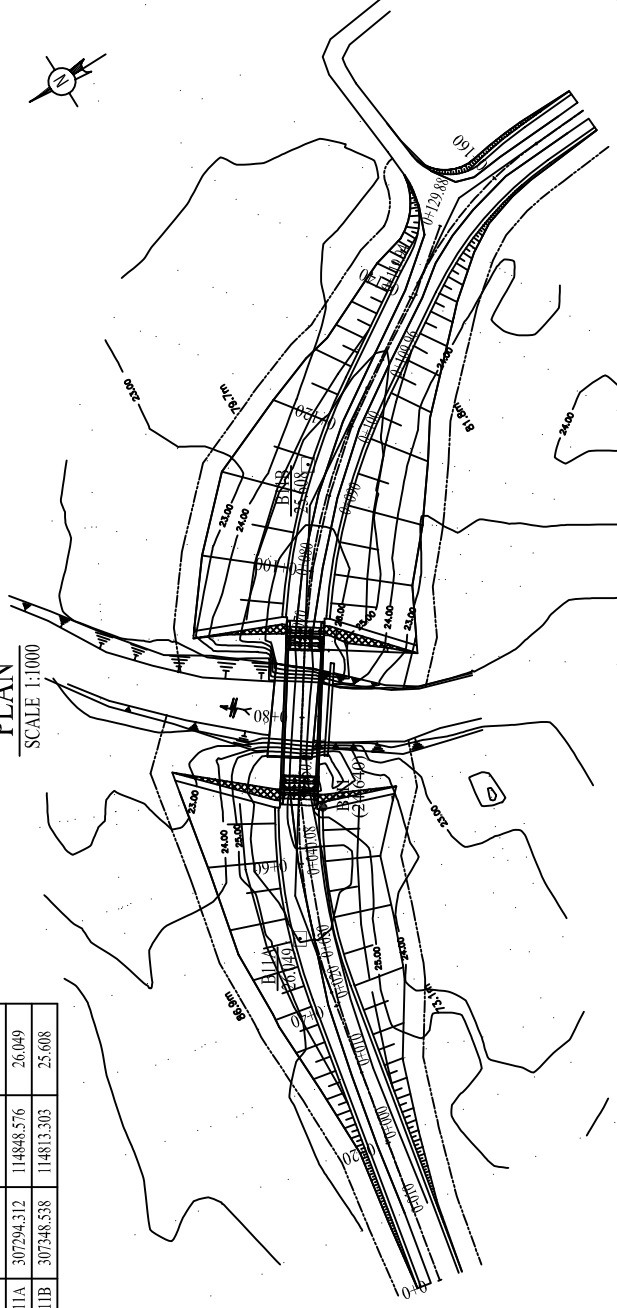
General Condition		
Design Live Load	"D" Lane Load	
Design Speed	V=40km/h	
Bridge Length(Span Length)	80.00m(24.34m+29.34m+24.34m)	
Longitudinal Gradient	8.0%, -8.0%	
Cross-fall of Carriage way	2.00%	
Super Structure Type	Prestressed Concrete	
Sub Structure Type	Reinforced Concrete	
Foundation Type	Steel Pipe Pile ϕ 40cm	
Material Strength		
Super Structure Type	Girder	σ 28=34.6N/mm ²
	Cross Beam	σ 28=29N/mm ²
	Slab	σ 28=29N/mm ²
Surface	Curb, Handrail	σ 28=21N/mm ²
Sub Structure Type	σ 28=21N/mm ²	
Reinforcing Steel	SD235(py=235N/mm ²)	

BR.NO.B11 KOKOBUKA VI GENERAL VIEW OF THE SITE

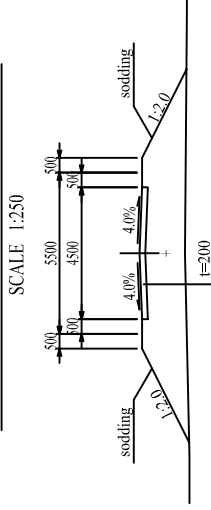
SECTION	DRAWING NO.	SHEET NO.
DRAWING TITLE	BR.NO.B11 KOKOBUKA VI GENERAL VIEW OF THE SITE	16 OF 29

	X	Y	Z
BM B11A	307294.312	114848.576	26.049
BM B11B	307348.538	114813.303	25.608

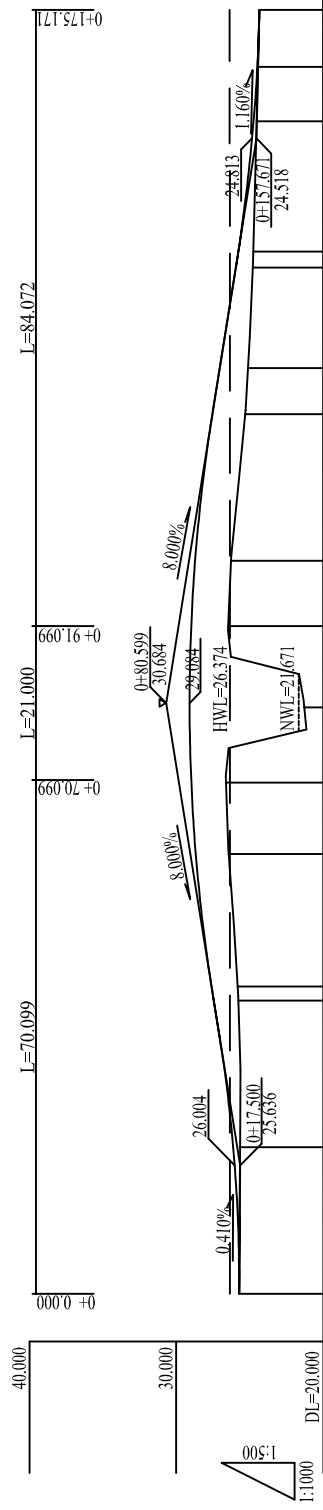
PLAN
SCALE 1:1000



TYPICAL CROSS SECTION
SCALE 1:250



PROFILE
SCALE V=1:500
H=1:1000



GROUND HEIGHT	STATION	GROUND HEIGHT	STATION	GROUND HEIGHT	STATION
25.708	NO.0	25.655	0+17.500	25.644	0+20.000
25.762	0+0.000	25.762	0+41.929	26.602	0+69.765
25.812	0+80.599	21.277	0+80.599	26.444	0+91.118
26.602	0+91.118	26.444	0+91.118	26.265	100.000
26.602	120.000	25.295	126.289	25.104	140.000
26.602	140.000	24.766	142.183	24.507	160.000
26.602	160.000	24.537	167.402	24.413	175.171