

7. Equipment Distribution Plan

Equipment Distribution Plan

Plan No.	Description	Plan Q'ty	Equipment distribution plan	Q'ty Breakdown
1	LCD projector	3	(Common Equipment)	
2	Visual presenter	2	(Common Equipment)	
3	Digital video camera	2	(Common Equipment)	
4	Screen, wall mounted type	4	Multi-purpose hall	1
			Training room (1)	1
			Training room (2)	1
			Computer training room	1
5	Screen, portable type	4	(Common Equipment)	
6	Overhead projector	1	(Common Equipment)	
7	Speaker set, portable type	3	Training room (1)	1
			Training room (2)	1
			Computer training room	1
8	Simultaneous interpretation set, portable type	1	(Common Equipment)	
9	Conference set	1	Conference room	
10	Speaker set, wall mounted type	1	Multi-purpose hall	
11	TV monitor & VTR set	6	Multi-purpose hall	1
			Training room (1)	1
			Training room (2)	1
			Information resource room	1
			Conference room	1
			Lobby (1F/Training building)	1
12	Video editing system	1	Multi-media production room	
13	Computer set A	1	Computer training room	
14	Computer set B	2	Information resource room	
15	Computer set C	2	Multi-media production room	
16	Computer set D	1	Multi-media production room	
17	Computer set E	3	(Common Equipment)	
18	Network set	1	Server room (administration building)	
			Server room (training building)	
19	Scanner	1	Computer training room	
20	Laser printer	1	Computer training room	
21	Photocopier	2	Information resource room	1
			Reception (training building)	1
22	Printer	1	Multi-media production room	
23	Binding machine	1	Multi-media production room	
24	Braille printer for cut sheet paper	1	Multi-media production room	
25	Braille printer for continuous tractor-fed paper	1	Multi-media production room	
26	Tactile image maker	2	(Common Equipment)	
27	CCTV (Magnification and Display machine)	2	Information resource room	
28	CD book player	2	Information resource room	
29	Whiteboard	4	Training room (1)	1
			Training room (2)	1
			Computer training room	1
			Conference room	1
30	Motorized wheelchair	3	(Common Equipment)	
31	Wheelchair, standing type	2	(Common Equipment)	
32	Wheelchair, reclining type	2	(Common Equipment)	
33	Wheelchair, manual standard type	6	(Common Equipment)	
34	Washing machine	3	Wash room	
35	Linen trolley	2	Linen store (GF/Training building)	1

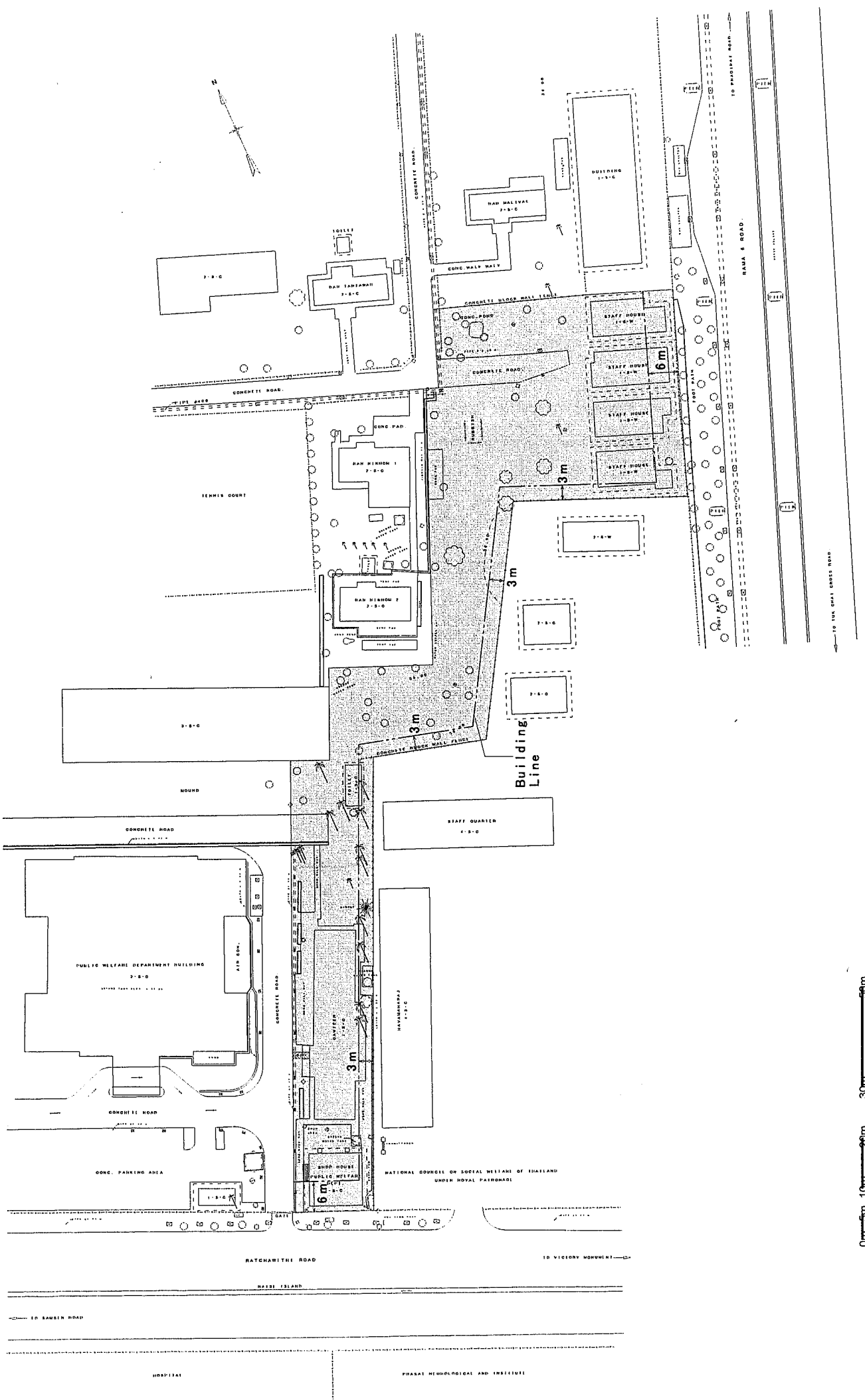
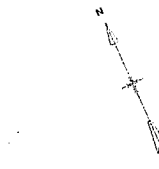
Equipment Distribution Plan

Plan No.	Description	Plan Q'ty	Equipment distribution plan	Q'ty Breakdown
			Linen store (1F/Training building)	1
36	Laundry trolley	2	Linen store (GF/Training building)	1
			Linen store (1F/Training building)	1
37	Refrigerator, type A	2	Pantry (GF/Training building)	1
			Pantry (1F/Training building)	1
38	Refrigerator, type B	15	Bed room	
39	Food trolley	2	Pantry (Training building)	
40	Bus with a lift	1	(Common Equipment)	
41	First aid set	1	Duty room	
42	Maintenance tool set	1	Duty room	
43	Bed	32	Bed room	
44	Bedside cabinet	32	Bed room	
45	Side unit	15	Bed room	
46	Wardrobe	32	Bed room	
47	Chair, type A	84	Training room (1)	20
			Training room (2)	20
			Computer training room	22
			Server room (administration building)	1
			Server room (training building)	1
			Multi-media production room	5
			Information resource room	13
			Reception (training building)	2
48	Chair, type B	20	Conference room	
49	Chair, type C	32	Bed room	
50	Chair, type D	80	Multi-purpose hall	
51	Lobby chair	12	Lobby (1F/Training building)	
52	Desk, type A	20	Training room (1)	10
			Training room (2)	10
53	Desk, type B	20	Computer training room	
54	Desk, type C	2	Computer training room	
55	Desk, type D	2	Server room (administration building)	1
			Server room (training building)	1
56	Desk, type E	5	Multi-media production room	
57	Desk, type F	2	Reception (training building)	
58	Desk, type G	32	Bed room	
59	Conference table	1	Conference room	
60	Lobby table	9	Lobby (1F/Training building)	
61	Round table	1	Information resource room	
62	Bookshelf	10	Information resource room	
63	Magazine rack	2	Information resource room	
64	Showcase	3	Information resource room	
65	Carrel desk, type A	2	Information resource room	
66	Carrel desk, type B	2	Information resource room	
67	Reception counter	1	Information resource room	
68	Storage cabinet	24	Training store	2
			Hostel store	2
			Store (GF/administration building)	2
			Store (1F/administration building)	2
			Server room (administration building)	2
			Server room (training building)	2

Equipment Distribution Plan

Plan No.	Description	Plan Q'ty	Equipment distribution plan	Q'ty Breakdown
			Multi-media production room	4
			Reception (training building)	2
			Linen store (GF/Training building)	1
			Linen store (1F/Training building)	1
			Information resource room	4
69	Storage rack, type A	18	Training store	2
			Hostel store	2
			Store (GF/administration building)	2
			Store (1F/administration building)	2
			Server room (administration building)	2
			Server room (training building)	2
			Multi-media production room	4
			Reception (training building)	2
70	Storage rack, type B	4	Linen store (GF/Training building)	2
			Linen store (1F/Training building)	2
71	Bench	4	Connecting corridor	
72	Bed for duty room	1	Duty room	
73	Refrigerator for kitchen	1	Kitchen	
74	Freezer for kitchen	1	Kitchen	
75	Chair for canteen	72	Canteen	
76	Table for canteen	18	Canteen	
77	Shower chair	9	Bed room	

8. Site Survey Drawing



9. Soil Investigation

LEGEND

- PERMANENT CONTROL POINT
- SURVEY STATION
- BORE HOLE
- CONCRETE ROAD, AC ROAD
- LATERITE ROAD
- HOUSE/SHED
- MAIN ELECTRIC POLE
- LOW VOLTAGE ELECTRIC POLE
- LIGHTING POLE
- TREE AND PALM TREE
- BAMBED IRON FENCE
- CONCRETE BLOCK WALL FENCE
- CONTOUR LINE
- SPOT ELEVATION

NOTES :-

1. THE SURVEYING METHOD IS AN OLD CO-ORDINATE SYSTEM BASED ON THE EXISTING CONTROL POINTS OF BMA. WATER MARK PROJECT NO. BM-23.88A-24.
2. THE ELEVATION BASE IS MALAYSIAN (M.S.M.).
3. RELATED FROM CONTROL POINT IN ABOVE.
4. MORE INFORMATION SEE IN SURVEY REPORT.

HORIZONTAL/VERTICAL CONTROL POINTS.

POINT	NORTHING	EASTING	HEIGHT	REMARK
MC-01	1322463.72	665355.20	+36.14	BRASS CAP
MC-02	1322474.74	665370.03	+36.17	BRASS CAP
MC-03	1322485.76	665384.86	+36.20	BRASS CAP
MC-04	1322496.78	665399.69	+36.23	BRASS CAP
MC-05	1322507.80	665414.52	+36.26	BRASS CAP

0 5 10 15 20 25

HORIZONTAL GRAPHIC SCALE 1:50

1:50

NO.	REVISION	APPROVED

OWNER: YAMASHITA SEKKEI INC.

PROJECT: ASIA-PACIFIC DEVELOPMENT CENTER ON DISABILI - BAN RATCHAMITHI - RATCHAMITHI RD. BANGKOK

TITLE: MASTER PLAN PUBLIC WELFARE DEPARTMENT (EAST SIDE AREA)

SURVEY BY: Ten Consultants Co., Ltd.

ENGINEER

DRAWN

CHECKED YANIKUL

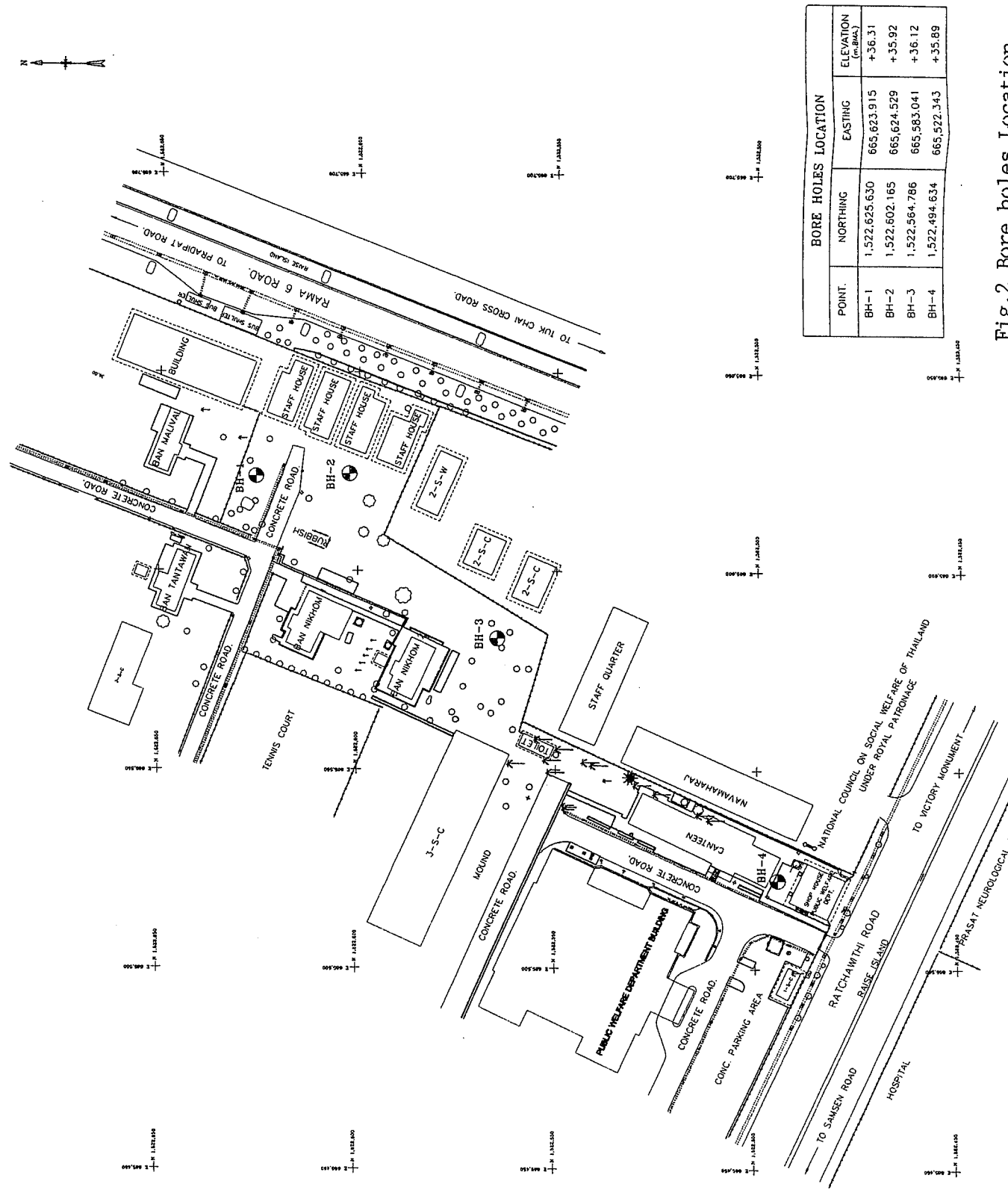
BUREAU: KSA/MSA

PROJECT: 33/008

SCALE: 1:50

DATE: 21-08-2005

YAMASHITA BANGKOK



BORE HOLES LOCATION

POINT	NORTHING	EASTING	ELEVATION (m. B.M.A.)
BH-1	1,522,625.630	665,623.915	+36.31
BH-2	1,522,602.165	665,624.529	+35.92
BH-3	1,522,564.786	665,583.041	+36.12
BH-4	1,522,494.634	665,522.343	+35.89

Fig.2 Bore holes Location

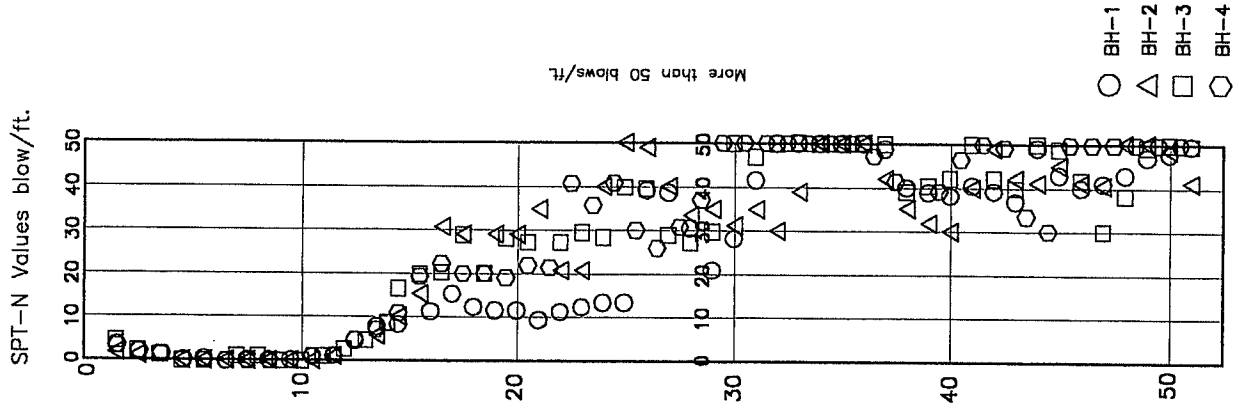
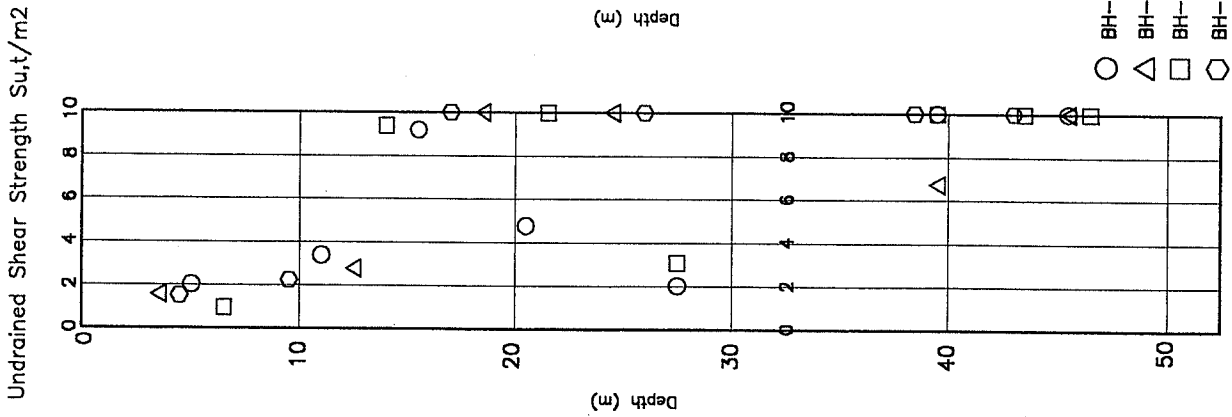
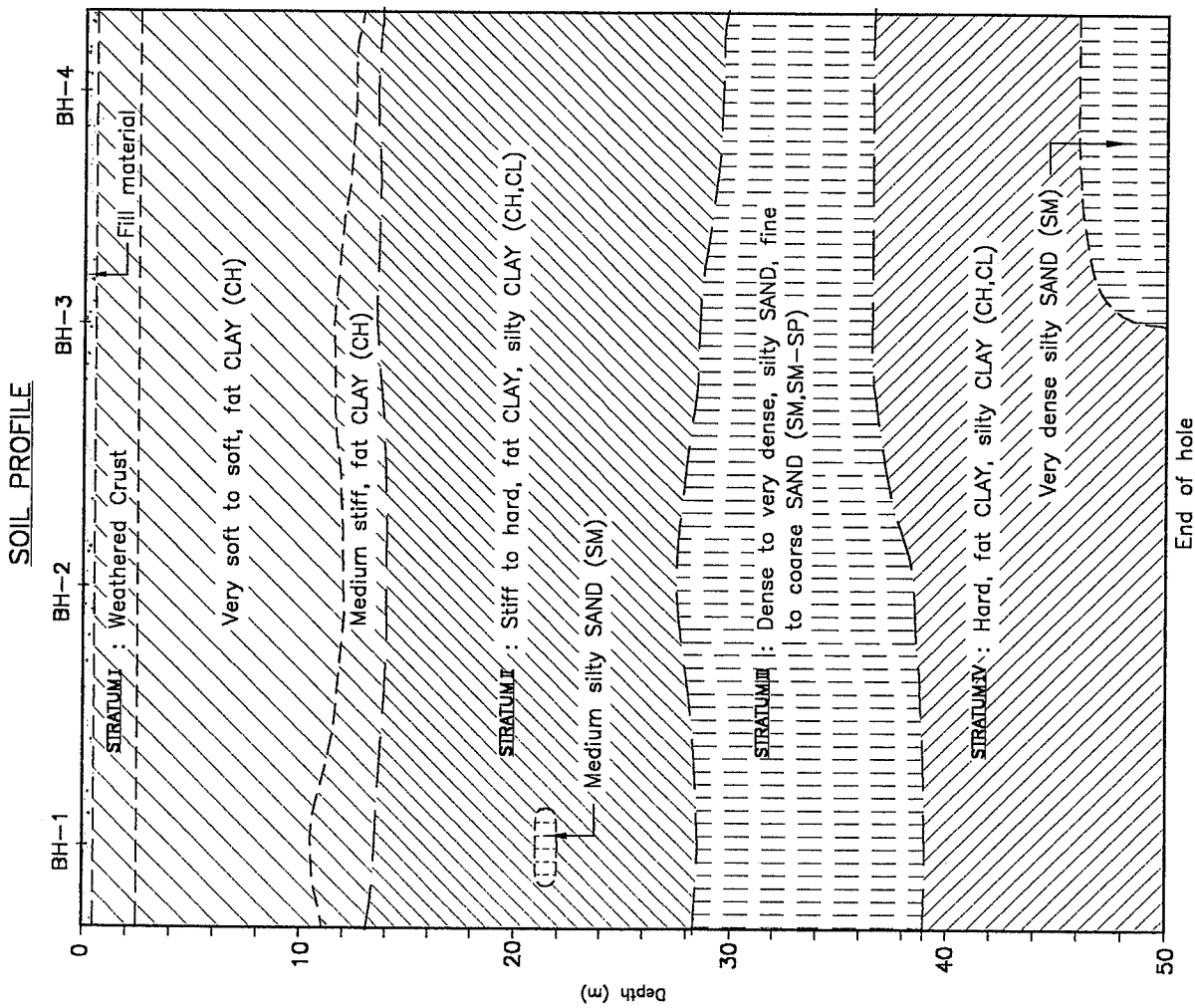


Fig. 3 Soil Profile, Undrained Shear Strength & SPT-N Values vs Depth

BORING LOG

PROJECT Asia-Pacific Development Center on Disability BORING STARTED June 16, 2002
 LOCATION Ratchawithi Rd., Bangkok BORING COMPLETED June 18, 2002
 BORING NO. BH-1 TOTAL DEPTH 50.45 M. SURFACE ELEVATION +36.31 M.
 DRILLER B.C INSPECTOR P.S OBSERVED WL -1.20 M.

SOIL DESCRIPTION	DEPTH (M.)	GRAPHIC LOG	METHOD SAMPLING & RECOVERY	PL	W _n	LL	0=qu/2 X=Sfv. (t/m. ²)				SPT-N (blow/ft.)				Y _t (t/m. ³)				
				-----○----- (%)			2	4	6	8	10	20	30	40	1.50	1.75	2.00		
	0																		
Fill material : brown, silty SAND and CLAY with roots (0.50 m.)	1		SS 1																
	2		SS 2																
Weathered crust : soft, dark brown, fat CLAY, (CH) (2.50 m.)	3		SS 3																
	4		SS 4																
Very soft to soft dark grey, fat CLAY high plasticity (CH) (10.50 m.)	5		ST 1																
	6		SS 5																
	7		SS 6																
	8		SS 7																
	9		SS 8																
	10		SS 9																
	11		SS 10																
	12		ST 2																
	13		SS 11																
	14		SS 12																
Medium stiff, grey, fat CLAY, high plasticity (CH) (13.50 m.)	15		SS 13																
	16		SS 14																
	17		ST 3																
	18		SS 15																
Stiff to very silty, greyish brown, fat CLAY, high plasticity (CH) (18.50 m.)	19		SS 16																
	20		SS 17																
	21		SS 18																
	22		SS 19																
Very stiff, greyish brown silty CLAY, medium plasticity (CL)	23		SS 20																
	24		SS 21																

BORING LOG

PROJECT Asia-Pacific Development Center on Disability BORING STARTED June 16, 2002
 LOCATION Ratchawithi Rd., Bangkok BORING COMPLETED June 18, 2002
 BORING NO. BH-1 TOTAL DEPTH 50.45 M. SURFACE ELEVATION +36.31 M.
 DRILLER B.C INSPECTOR P.S OBSERVED WL -1.20 M.

SOIL DESCRIPTION	DEPTH (M.)	GRAPHIC LOG	METHOD & SAMPLING & RECOVERY	PL	W _n	LL	o=qu/2 X=Sfv. (t/m. ²)				SPT-N (blow/ft.)				γ _t (t/m. ³)			
				20	40	60	80	2	4	6	8	10	20	30	40	1.50	1.75	2.00
- ditto - (20.50 m.)	21		ST 4															
			SS 20															
Medium dense, light brown, silty SAND, non plasticity (SM) (22.0 m.)	22		SS 21															
			SS 22															
Stiff, light brown, fat CLAY, high plasticity (CH) (24.0 m.)	23		SS 23															
	24		SS 24															
			SS 25															
Hard, greyish brown, fat CLAY, high plasticity (CH) (26.0 m.)	25		SS 26															
	26		SS 27															
			SS 28															
Very stiff to hard, geryish brown, silty CLAY, medium plasticity (CL) (28.50 m.)	27		SS 29															
	28		SS 30															
			SS 31															
	29		SS 32															
			SS 33															
	30		SS 34															
			SS 35															
	31		SS 36															
			SS 37															
	32		SS 38															
			SS 39															
	33		SS 40															
			SS 41															
	34		SS 42															
			SS 43															
	35		SS 44															
			SS 45															
	36		SS 46															
			SS 47															
	37		SS 48															
			SS 49															
	38		SS 50															
			SS 51															
	39		SS 52															
			SS 53															
	40		SS 54															
			SS 55															
	41		SS 56															
			SS 57															
	42		SS 58															
			SS 59															
	43		SS 60															
			SS 61															
	44		SS 62															
			SS 63															
	45		SS 64															
			SS 65															
	46		SS 66															
			SS 67															
	47		SS 68															
			SS 69															
	48		SS 70															
			SS 71															
	49		SS 72															
			SS 73															
	50		SS 74															
			SS 75															

BORING LOG

PROJECT Asia-Pacific Development Center on Disability BORING STARTED June 16, 2002
 LOCATION Ratchawithi Rd., Bangkok BORING COMPLETED June 18, 2002
 BORING NO. BH-1 TOTAL DEPTH 50.45 M. SURFACE ELEVATION +36.31 M.
 DRILLER B.C INSPECTOR P.S OBSERVED WL -1.20 M.

SOIL DESCRIPTION	DEPTH (M.)	GRAPHIC LOG	METHOD SAMPLING & RECOVERY	PL	W _n	LL	O=qu/2 X=Sfv. (t/m. ²)				SPT-N (blow/ft.)				γ _t (t/m. ³)							
				-----○----- (%)			2	4	6	8	10	20	30	40	1.50	1.75	2.00					
Hard, greyish brown, fat CLAY, high plasticity (CH)	42		SS 41																			
	43		SS 42																			
	44		SS 43																			
	45		SS 44																			
	46		ST 7																			
	46		SS 45																			
	47		SS 46																			
	48		SS 47																			
	49		SS 48																			
	50		SS 49																			
End of hole	50		SS 50																			
	51																					
	52																					
	53																					
	54																					
	55																					
	56																					
	57																					
	58																					
	59																					
	60																					
	61																					
62																						

BORING LOG

PROJECT Asia-Pacific Development Center on Disability BORING STARTED June 13, 2002
 LOCATION Ratchawithi Rd., Bangkok BORING COMPLETED June 15, 2002
 BORING NO. BH-2 TOTAL DEPTH 50.45 M. SURFACE ELEVATION +35.92 M.
 DRILLER B.C INSPECTOR P.S OBSERVED WL -1.50 M.

SOIL DESCRIPTION	DEPTH (M.)	GRAPHIC LOG	METHOD SAMPLING & RECOVERY	PL	W _n	LL	0=qu/2 X=S _{fv} (t/m. ²)				SPT-N (blow/ft.)				γ _t (t/m. ³)					
				(%)			2	4	6	8	10	20	30	40	1.50	1.75	2.00			
	0																			
Fill material : brown, silty sand and clayey with roots (0.50 m.)	1		SS 1																	
	2		SS 2																	
Weathered crust : soft, dark brownish grey, fat CLAY, (CH) (2.50 m.)	3		ST 1																	
	4		SS 3																	
Very soft to soft, dark grey, fat CLAY, high plasticity (CH) (12.0 m.)	5		SS 4																	
	6		SS 5																	
	7		SS 6																	
	8		SS 7																	
	9		SS 8																	
	10		SS 9																	
	11		SS 10																	
	12		ST 2																	
	13		SS 11																	
	14		SS 12																	
Medium stiff, grey, fat CLAY, high plasticity (CH) (14.0 m.)	15		SS 13																	
	16		SS 14																	
Stiff, brownish grey, fat CLAY, high plasticity (CH) (16.0 m.)	17		SS 15																	
	18		ST 3																	
Very stiff to hard, greyish brown, fat CLAY, high plasticity (CH)	19		SS 16																	
	18		SS 17																	
	19																			
	20																			

BORING LOG

PROJECT Asia-Pacific Development Center on Disability BORING STARTED June 13, 2002
 LOCATION Ratchawithi Rd., Bangkok BORING COMPLETED June 15, 2002
 BORING NO. BH-2 TOTAL DEPTH 50.45 M. SURFACE ELEVATION +35.92 M.
 DRILLER B.C INSPECTOR P.S OBSERVED WL -1.50 M.

SOIL DESCRIPTION	DEPTH (M.)	GRAPHIC LOG	METHOD SAMPLING & RECOVERY	PL	W _n	LL	0=qu/2 X=Sfv. (t/m. ²)				SPT-N (blow/ft.)				γ _t (t/m. ³)			
				(%)			2	4	6	8	10	20	30	40	1.50	1.75	2.00	
- ditto - (21.0 m.)	21		SS 18															
Very stiff, greyish brown, fine sandy CLAY, low plasticity (CL) (23.0 m.)	22		SS 19															
	23		SS 20															
	24		SS 21															
Hard, greyish brown, lean CLAY, medium plasticity (CL) (27.50 m.)	25		ST 4							22.64								
	26		SS 22															
	27		SS 23															
	28		SS 24															
	29		SS 25															
	30		SS 26															
	31		SS 27															
Dense, yellowish brown, silty fine SAND, non plasticity (SM) (31.0 m.)	32		SS 28															
	33		SS 29															
	34		SS 30															
	35		SS 31															
Dense to very dense, yellowish brown to brownish grey, fine to coarse SAND, non plasticity (SM-SP) (38.50 m.)	36		SS 32															
	37		SS 33															
	38		SS 34															
	39		SS 35															
	40		SS 36															
	41		SS 37															
	42		SS 38															
Hard, greyish brown to brown, fat CLAY, high plasticity (CH)	43		ST 5															
	44		SS 37															
	45		SS 38															

BORING LOG

PROJECT Asia-Pacific Development Center on Disability BORING STARTED June 13, 2002
 LOCATION Ratchawithi Rd., Bangkok BORING COMPLETED June 15, 2002
 BORING NO. BH-2 TOTAL DEPTH 50.45 M. SURFACE ELEVATION +35.92 M.
 DRILLER B.C INSPECTOR P.S OBSERVED WL -1.50 M.

SOIL DESCRIPTION	DEPTH (M.)	GRAPHIC LOG	METHOD	SAMPLING & RECOVERY	PL	W _n	LL	O=qu/2				SPT-N				γ _t			
					(%)				(t/m ²)				(blow/ft.)				(t/m ³)		
					20	40	60	80	2	4	6	8	10	20	30	40	1.50	1.75	2.00
Hard, greyish brown to brown, fat CLAY, high plasticity (CH)	42		SS	39												48			
	43		SS	40												43			
	44		SS	41												42			
	45		SS	42												45			
	46		ST	6							22.14								
	46		SS	43												42			
	47		SS	44												41			
	48		SS	45												52			
	49		SS	46												53			
	50		SS	47												48			
	50		SS	48												42			
	51																		
52																			
53																			
54																			
55																			
56																			
57																			
58																			
59																			
60																			
61																			
62																			
Bottom of hole at 50.45 m.																			

BORING LOG

PROJECT Asia-Pacific Development Center on Disability BORING STARTED June 15, 2002
 LOCATION Ratchawithi Rd. Bangkok BORING COMPLETED June 17, 2002
 BORING NO. BH-3 TOTAL DEPTH 50.45 M. SURFACE ELEVATION +36.12 M.
 DRILLER LC INSPECTOR PS OBSERVED WL -0.80 M.

SOIL DESCRIPTION	DEPTH (M.)	GRAPHIC LOG	METHOD SAMPLING & RECOVERY	PL	W _n	LL	σ = qu/2				SPT-N				γ _t			
				 (%)			X=Sfv. (t/m. ²)				(blow/ft.)				(t/m. ³)			
				20	40	60	80	2	4	6	8	10	20	30	40	1.50	1.75	2.00
	0																	
 Fill material : brown dense, silty sand and clayey with roots (0.50 m.)	1		SS 1									5						
	2		SS 2										3					
Weathered crust soft to medium dark brown fat CLAY, (CH) (2.50 m.)	3		SS 3									2						
	4		SS 4									1						
	5		SS 5									1						
	6		ST 1										1					
Very soft to soft, dark grey, fat CLAY, high plasticity (CH) (11.50 m.)	7		SS 6									2						
	8		SS 7									2						
	9		SS 8									1						
	10		SS 9									1						
	11		SS 10									2						
	12		SS 11									4						
Medium Stiff grey, fat CLAY, high plasticity (CH) (13.50 m.)	13		SS 12									5						
	14		ST 2									8						
Very stiff to hard, greyish brown, fat CLAY, high plasticity (CH)	15		SS 14									18.62						
	16		SS 15									16						
	17		SS 16									20						
	18		SS 17									21						
	19		SS 18									28						
	20		SS 19									20						
	21		SS 19									27						

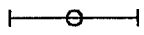

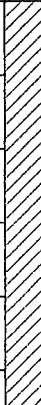
BORING LOG

PROJECT Asia-Pacific Development Center on Disability BORING STARTED June 12, 2002
 LOCATION Ratchawithi Rd. Bangkok BORING COMPLETED June 14, 2002
 BORING NO. BH-3 TOTAL DEPTH 50.45 M. SURFACE ELEVATION +36.12 M.
 DRILLER LC INSPECTOR PS OBSERVED WL -0.80 M.

SOIL DESCRIPTION	DEPTH (M.)	GRAPHIC LOG	METHOD	SAMPLING & RECOVERY	PL	W _n	LL	O=qu/2				SPT-N				γ _t			
					 (%)			X=S _{fv} (t/m. ²)				(blow/ft.)				(t/m. ³)			
					20	40	60	80	2	4	6	8	10	20	30	40	1.50	1.75	2.00
Very stiff, brown, silty CLAY, low plasticity (CL) (21.0 m.)	21		SS	20										26					
Very stiff to hard, greyish brown, fat CLAY, high plasticity (CH) (24.50 m.)	22		ST	3															
			SS	21															
			SS	22															
			SS	23															
			SS	24															
Very stiff, greyish yellowish silty CLAY, medium plasticity (CL) (26.50 m.)	25		SS	25															
	26		SS	26															
Very stiff, brown, clayey SILT, low plasticity (ML) (28.50 m.)	27		ST	4															
	28		SS	27															
			SS	28															
Dense, yellowish brown, silty SAND, non plasticity (SM) (32.50 m.)	29		SS	29															
	30		SS	30															
	31		SS	31															
	32		SS	32															
Very dense, brown, fine to coarse SAND, non plasticity (SM-SP) (SM-SP) (36.50 m.)	33		SS	33															
	34		SS	34															
	35		SS	35															
	36		SS	36															
Hard, brown, fat CLAY, high plasticity (CH)	37		SS	37															
	38		SS	38															
	39		ST	5															
	40		SS	39															
	41		SS	40															

BORING LOG

PROJECT Asia-Pacific Development Center on Disability BORING STARTED June 12, 2002
 LOCATION Ratchawithi Rd. Bangkok BORING COMPLETED June 14, 2002
 BORING NO. BH-3 TOTAL DEPTH 50.45 M. SURFACE ELEVATION +36.12 M.
 DRILLER LC INSPECTOR PS OBSERVED WL -0.80 M.

SOIL DESCRIPTION	DEPTH (M.)	GRAPHIC LOG	METHOD	SAMPLING & RECOVERY	PL	W _n	LL	O=qu/2				SPT-N				γ _t					
					 (%)			X=Sfv. (t/m. ²)				(blow/ft.)				(t/m. ³)					
					20	40	60	80	2	4	6	8	10	20	30	40	1.50	1.75	2.00		
Hard, brown, fat CLAY, high plasticity (CH) (45.00 m.)	42		SS	41																	
	43		SS	42																	
	44		ST	6																	
	45		SS	43																	
	46		SS	44																	
	47		SS	45																	
Hard, brown to greyish brown, silty CLAY, medium plasticity (CH) (50.45 m.)	48		ST	7																	
	49		SS	46																	
	50		SS	47																	
	51		SS	48																	
	52		SS	49																	
	53		SS	50																	
End of hole	54																				
	55																				
	56																				
	57																				
	58																				
	59																				
	60																				
	61																				
	62																				

BORING LOG

PROJECT Asia-Pacific Development Center on Disability BORING STARTED June 12, 2002
 LOCATION Ratchawithi Rd., Bangkok BORING COMPLETED June 14, 2002
 BORING NO. BH-4 TOTAL DEPTH 50.45 M. SURFACE ELEVATION +35.89 M.
 DRILLER L.C INSPECTOR P.S OBSERVED WL -1.20 M.

SOIL DESCRIPTION	DEPTH (M.)	GRAPHIC LOG	METHOD SAMPLING & RECOVERY	PL	W _n	LL	O=qu/2				SPT-N				γ _t			
				-----				X=Sfv.				(blow/ft.)				(t/m. ³)		
				(%)				(t/m. ²)										
				20	40	60	80	2	4	6	8	10	20	30	40	1.50	1.75	2.00
	0																	
Fill material : brown dense, silty sand and clayey with roots (0.50 m.)	1		SS 1									4						
	2		SS 2									3						
Weathered crut : soft, dark brownish grey, fat CLAY, (CH) (2.50 m.)	3		SS 3									2						
	4																	
	5		ST 1															
	6		SS 4									1						
	7		SS 5									1						
Very soft to soft, dark grey, fat CLAY, high plasticity (CH)	8		SS 6									1						
	9		SS 7									1						
	10		ST 2															
	11		SS 8									2						
	12		SS 9									2						
	13		SS 10									5						
Medium Stiff grey, fat CLAY, high plasticity (CH) (13.50 m.)	14		SS 11									7						
	15		SS 12									11						
Stiff to very stiff, light grey fat CLAY, high plasticity (CH) (15.5m.)	16		SS 13									19						
	17		SS 14									23						
	18		ST 3									11.41						
	19		SS 15									20						
	20		SS 16									20						
Very stiff to greyish brown fat CLAY, high plasticity (CH)	21		SS 17									19						
	22																	
	23																	
	24																	
	25																	
	26																	
	27																	
	28																	
	29																	
	30																	
	31																	
	32																	
	33																	
	34																	
	35																	
	36																	
	37																	
	38																	
	39																	
	40																	
	41																	
	42																	
	43																	
	44																	
	45																	
	46																	
	47																	
	48																	
	49																	
	50																	

BORING LOG

PROJECT Asia-Pacific Development Center on Disability BORING STARTED June 12, 2002
 LOCATION Ratchawithi Rd., Bangkok BORING COMPLETED June 14, 2002
 BORING NO. BH-4 TOTAL DEPTH 50.45 M. SURFACE ELEVATION +35.89 M.
 DRILLER L.C INSPECTOR P.S OBSERVED WL -1.20 M.

SOIL DESCRIPTION	DEPTH (M.)	GRAPHIC LOG	METHOD SAMPLING & RECOVERY	PL	W _n	LL	0=qu/2 X=S _{fv} (t/m. ²)				SPT-N (blow/ft.)				γ _t (t/m. ³)		
				-----○----- (%)			2	4	6	8	10	20	30	40	1.50	1.75	2.00
- ditto - (21.0 m.)	21		SS 18	○									23				
Very stiff, to hard, greyish brown, lean CLAY, medium plasticity (CL) (25.50 m.)	22		SS 19	○	H								22				
	23		SS 20	○									41				
	24		SS 21	○									36				
	25		SS 22	○									41				
	26		SS 23	○									30				
	Very stiff to hard, greyish brown, fat CLAY, high plasticity (CH) (28.00 m.)	27		ST 4	○									13.70			
28			SS 24	○									26				
29			SS 25	○									31				
Hard, brown, sandy CLAY, medium plasticity (CL) (29.50 m.)	30		SS 26	○									37				
	31		SS 27	○									54				
Very dense, brown, silty fine SAND, non plasticity (SM) (33.50 m.)	32		SS 28	○	H								66				
	33		SS 29	○	- NP -								68				
	34		SS 30	○	- NP -								71				
	35		SS 31	○	- NP -								90				
Very dense, greyish brown, fine to coarse SAND, non plasticity (SM-SP) (36.50 m.)	36		SS 32	○	- NP -								64				
	37		SS 33	○	- NP -								53				
	38		SS 34	○	- NP -								47				
Hard, greyish brown, silty CLAY, medium plasticity (CL) (38.00 m.)	39		ST 5	○									15.60				
	40		SS 35	○									42				
Hard, greyish brown, fat CLAY, high plasticity (CH)	41		SS 36	○									39				
	42		SS 37	○									46				
	43			○													

BORING LOG

PROJECT Asia-Pacific Development Center on Disability BORING STARTED June 12, 2002
 LOCATION Ratchawithi Rd., Bangkok BORING COMPLETED June 14, 2002
 BORING NO. BH-4 TOTAL DEPTH 50.45 M. SURFACE ELEVATION +35.89 M.
 DRILLER LC INSPECTOR P.S OBSERVED WL -1.20 M.

SOIL DESCRIPTION	DEPTH (M.)	GRAPHIC LOG	METHOD SAMPLING & RECOVERY	PL	W _n	LL	o=qu/2 X=Sfv. (t/m. ²)				SPT-N (blow/ft.)				γ _t (t/m. ³)				
				(%)			2	4	6	8	10	20	30	40	1.50	1.75	2.00		
- ditto - (21.0 m.)	42	[Hatched]	SS 38																
	43		SS 39																
	43		ST 6							15.05									
Hard, greyish brown silty CLAY, medium plasticity (CL) (46.0 m.)	44	[Hatched]	SS 40																
	45		SS 41																
	46		SS 42																
	46																		
Very dense, brown, silty fine SAND, non plasticity (SM) (50.45 m.)	47	[Vertical Lines]	SS 43																
	48																		
	48		SS 44																
	49		SS 45																
	49																		
End of hole	50	[Vertical Lines]	SS 46																
	50																		
	51																		
	51																		
	52																		
	53																		
	54																		
	55																		
	56																		
	57																		
58																			
59																			
60																			
61																			
62																			