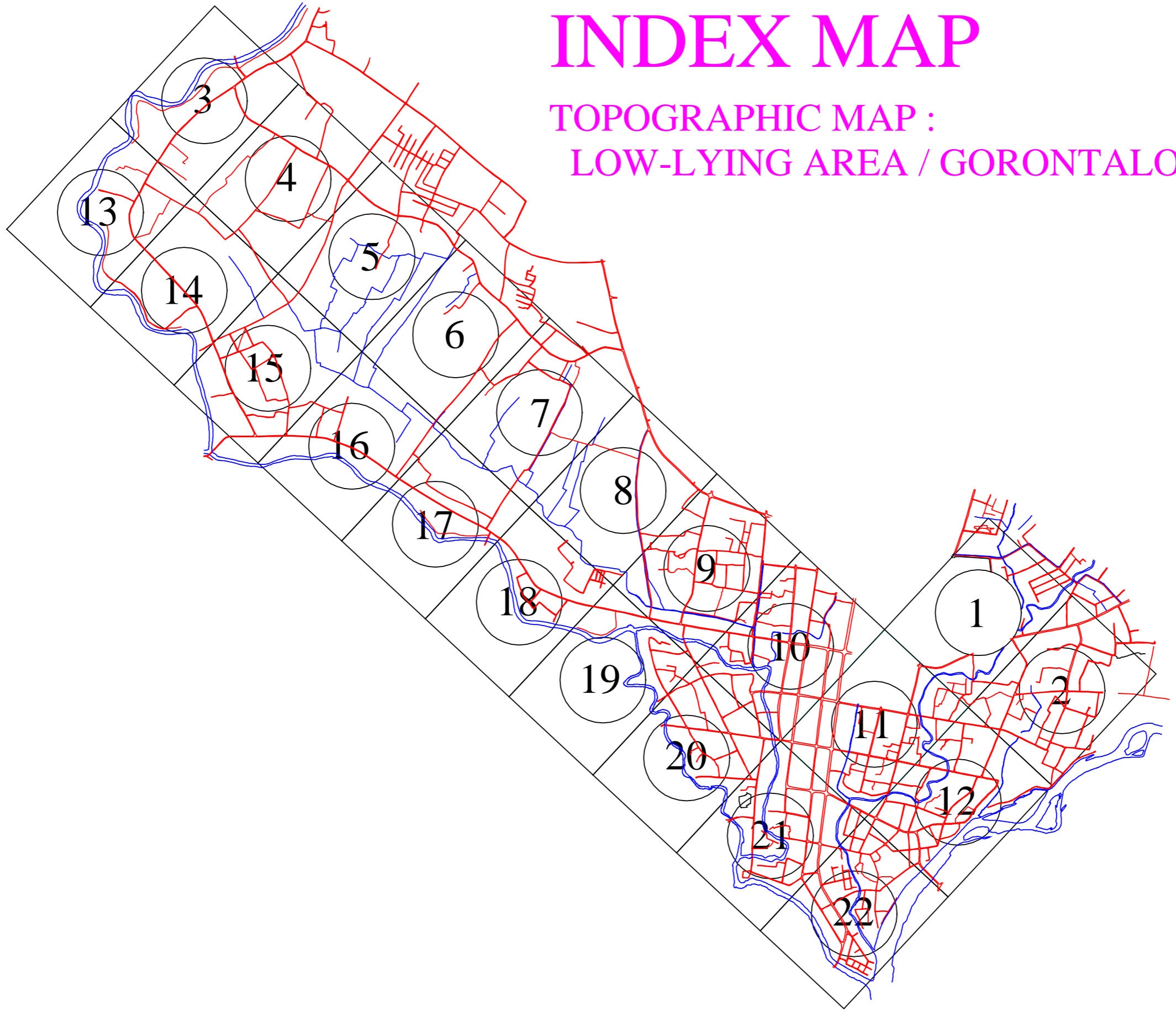
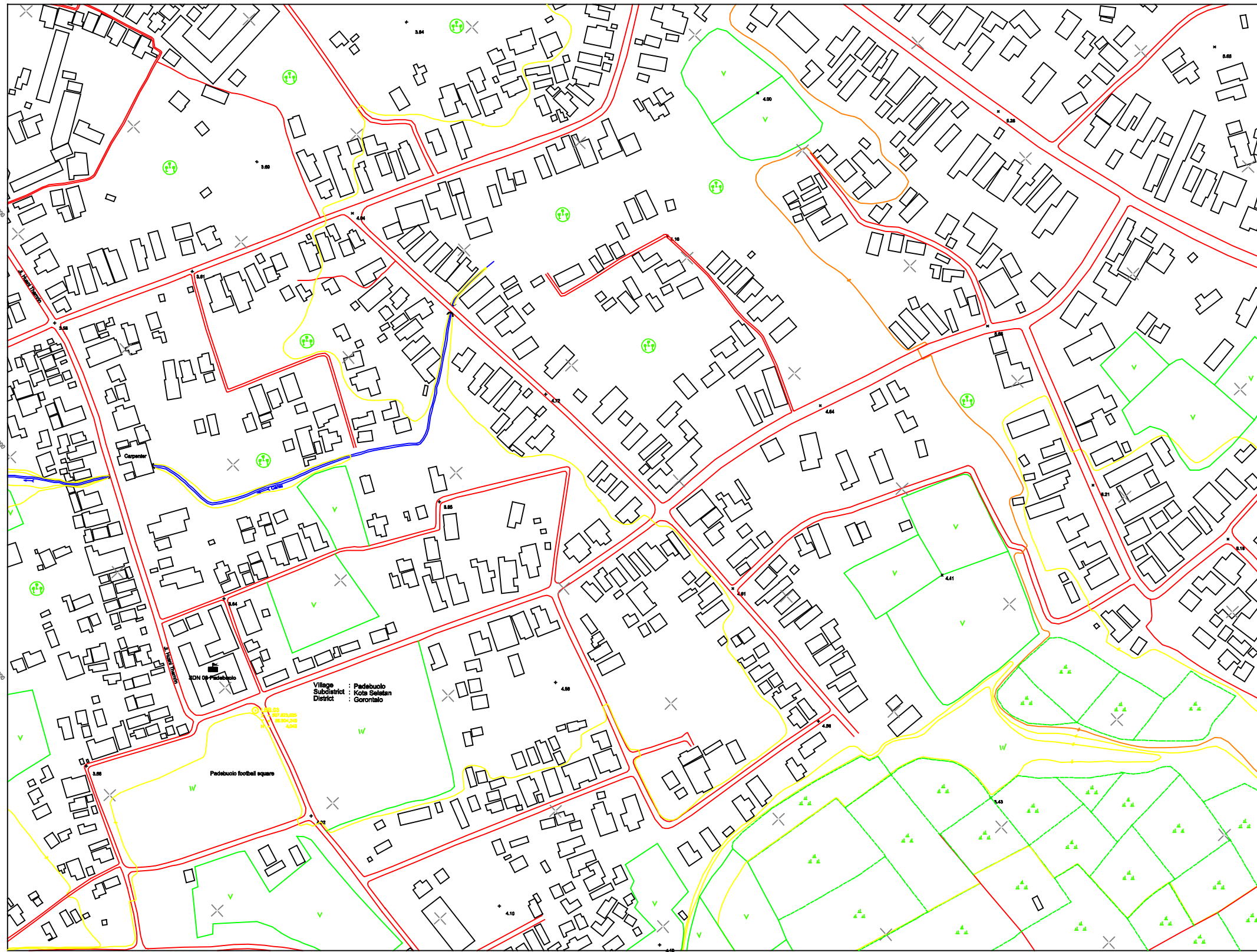


INDEX MAP

TOPOGRAPHIC MAP :
LOW-LYING AREA / GORONTALO





LEGEND

| | | | |
|-------|--|---------|---|
| ▲ | Electric Transmission Point Titik Tegangan Tinggi | —+—+— | Electric Cross Line Lini Tegangan Tinggi |
| ⊙ | Grid Point Titik Grid | TT TTTT | Drains and Embankment Kerukan dan Timbunan |
| □ | Building Berach Mark Borch Mark | —+—+— | Stream Sungai |
| ⊕ | Spot Height Titik Tinggi | —+—+— | Muslim graves Kuburan Muslim |
| ⊙ | House / Building Rumah | —+—+— | Christian cemetery Kuburan Kristen |
| ⊙ | Factory Pabrik | —+—+— | Chinese graves Kuburan Cina |
| ⊙ | Public Hall Balai Kota | —+—+— | Paddy field Sawah |
| ⊙ | Police Station Kantor Polisi | —+—+— | Boundary of Unincorporated State / Kecamatan |
| ⊙ | Fire Station Stasiun Pemadam Kebakaran | —+—+— | Field Ladang |
| ⊙ | Post Office Kantor Pos | —+—+— | Forest Hutan |
| ⊙ | Mosque Masjid | —+—+— | Grass Rumput |
| ⊙ | Church Gereja | —+—+— | Tree Pohon |
| ⊙ | Hospital Rumah Sakit | —+—+— | Water hole Lubang Air |
| ⊙ | School Sekolah | —+—+— | Open Air Pasar Air |
| ⊙ | Market Pasar | —+—+— | Pipe Culvert Gorong-gorong |
| ⊙ | Telephone Office Kantor Telepon | —+—+— | Monuments Tugu |
| ⊙ | Government Office Kantor Pemerintahan | —+—+— | Contour Line Garis Kontur |
| ⊙ | Hotel | —+—+— | |
| ⊙ | Gasoline Pump Pompa Bensin | —+—+— | |
| —+—+— | Road Jalan | —+—+— | Pond, lake Kolon, danau |
| —+—+— | Path Jalan Setapak | —+—+— | Sand Pasir |
| —+—+— | Bridge Jembatan | —+—+— | Land Slide Gleying |
| —+—+— | Station Stasiun | —+—+— | a. River / Sungai |
| —+—+— | Subdivided Boundary Batas Kecamatan | —+—+— | b. Rivulet / Arak Sungai |
| —+—+— | Village Boundary Batas Kelurahan | —+—+— | c. Direction / Arak Sungai |

INDEX MAP

- Aerial Photography (1/10,000) : August 2001
 - Topographic map (1/1,000) : October 2001
 - Horizontal System : UTM (6° Zone)
 - Elevation System : MSL
 - Contour Interval : 1 m

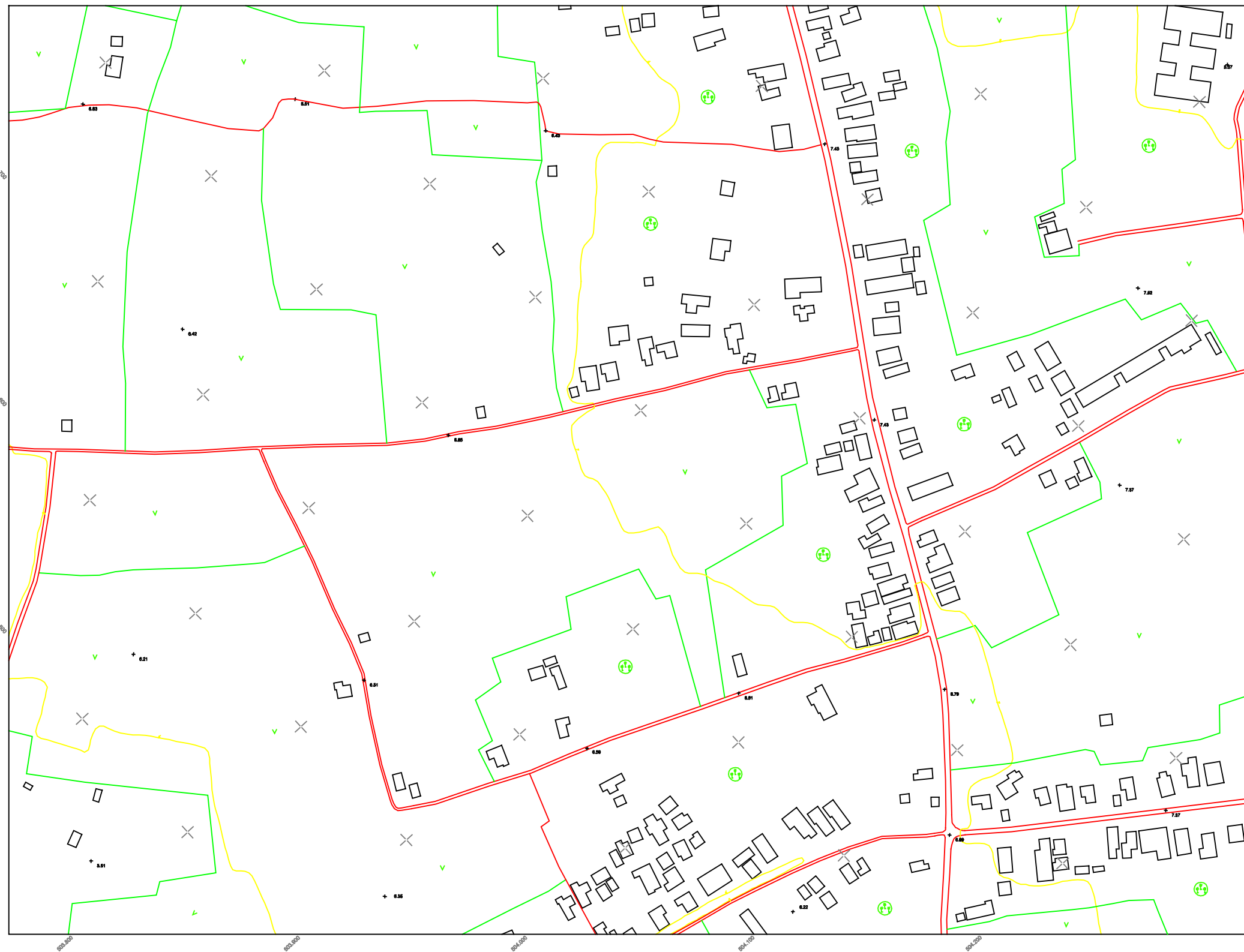
**DIRECTORATE GENERAL OF WATER RESOURCES,
 MINISTRY OF SETTLEMENT AND REGIONAL INFRASTRUCTURE**
**THE STUDY ON FLOOD CONTROL AND WATER MANAGEMENT
 IN LIMBOTO - BOLANGO - BONE BASIN**
TOPOGRAPHIC MAP : LOW-LYING AREA / GORONTALO

| | | | |
|------------|----------------------|-------------|------------------|
| Checked by | | Approved by | |
| Name | PT. ATLAS DELTASATYA | Name | Isoo Sasithira |
| Signature | | Signature | |
| Date | October 9, 2001 | Date | October 19, 2001 |

JICA JAPAN INTERNATIONAL COOPERATION AGENCY

PT. ATLAS DELTASATYA
 2, 3rd floor, Jl. H. Agus Salvo No. 100, Jakarta 10110
 TEL: (021) 52000000 FAX: (021) 52000001

SHEET No. 02/22



N

0 20 40 60 80 100 Meter

LEGEND

| | | | | | | | | | | | | | | | | | | | | | | | | | | | | | | | | | | | | | | | | | | | | |
|---|---------------------------------------|-------------------------------|-----------------------------|---------------------|-----------------------------|-----------------------------------|--|-----------------------------|--------------------|--------------------|---------------------------|---------------------|--------------------------|---|--|------------------|---------------------------------|-----------------|----------------------|----------------------|----------------------|---|---------------------------------------|--|---|------------------|--------------------------------------|---|------------------------------------|------------------------|--|-------------------|-------------------|-------------------|-----------------|----------------------------|-----------------|---|-------------------|--------------------------------|------------------------------|-----------------|------------------------|---|
| ▲ Existing Triangulation Point Titik Tergangan Triangulasi | ⊕ Existing Bench Mark Benteng Mark | ⊕ Spot Height Tinggi Titik | ⊕ House / Building Rumah | ⊕ Factory Pabrik | ⊕ Public Hall Balai Desa | ⊕ Police Station Kantor Polisi | ⊕ Fire Station Kantor Pemadam Kebakaran | ⊕ Post Office Kantor Pos | ⊕ Mosque Masjid | ⊕ Church Gereja | ⊕ Hospital Rumah Sakit | ⊕ School Sekolah | ⊕ Airport Penerbangan | ⊕ Telephone Office Kantor Telekomunikasi | ⊕ Government Office Kantor Pemerintahan | ⊕ Hotel Hotel | ⊕ Gasoline Pump Pompa Bensin | ⊕ Road Jalan | ⊕ Path Jalan Sepi | ⊕ Bridge Jembatan | ⊕ Station Stasiun | ⊕ Subdistrict Boundary Batas Kecamatan | ⊕ Village Boundary Batas Kelurahan | ⊕ Electric Power Line Salur Tegangan Tinggi | ⊕ Cable and Reinforcement Kawat Besi Tahan | ⊕ Swamp Rawan | ⊕ Muslim grass Kebun Sayur Muslim | ⊕ Christian cemetery Kuburan Kristen | ⊕ Muslim cemetery Kuburan Islam | ⊕ Paddy field Sawah | ⊕ Boundary of Vegetation Batas Tumbuhan | ⊕ Field Ladang | ⊕ Forest Hutan | ⊕ Grass Rumput | ⊕ Tree Pohon | ⊕ Water hole Lubang Air | ⊕ Well Sumbu | ⊕ Pipe Culvert Saluran Gorong-gorong | ⊕ Manure Tinja | ⊕ Contour Line Garis Kontur | ⊕ Pond, lake Kolam, danau | ⊕ Sand Pasir | ⊕ Land Slide Tebing | ⊕ a. River / Sungai b. Rivulet / Anak Sungai c. Direction / Arah Sungai |
|---|---------------------------------------|-------------------------------|-----------------------------|---------------------|-----------------------------|-----------------------------------|--|-----------------------------|--------------------|--------------------|---------------------------|---------------------|--------------------------|---|--|------------------|---------------------------------|-----------------|----------------------|----------------------|----------------------|---|---------------------------------------|--|---|------------------|--------------------------------------|---|------------------------------------|------------------------|--|-------------------|-------------------|-------------------|-----------------|----------------------------|-----------------|---|-------------------|--------------------------------|------------------------------|-----------------|------------------------|---|

INDEX MAP

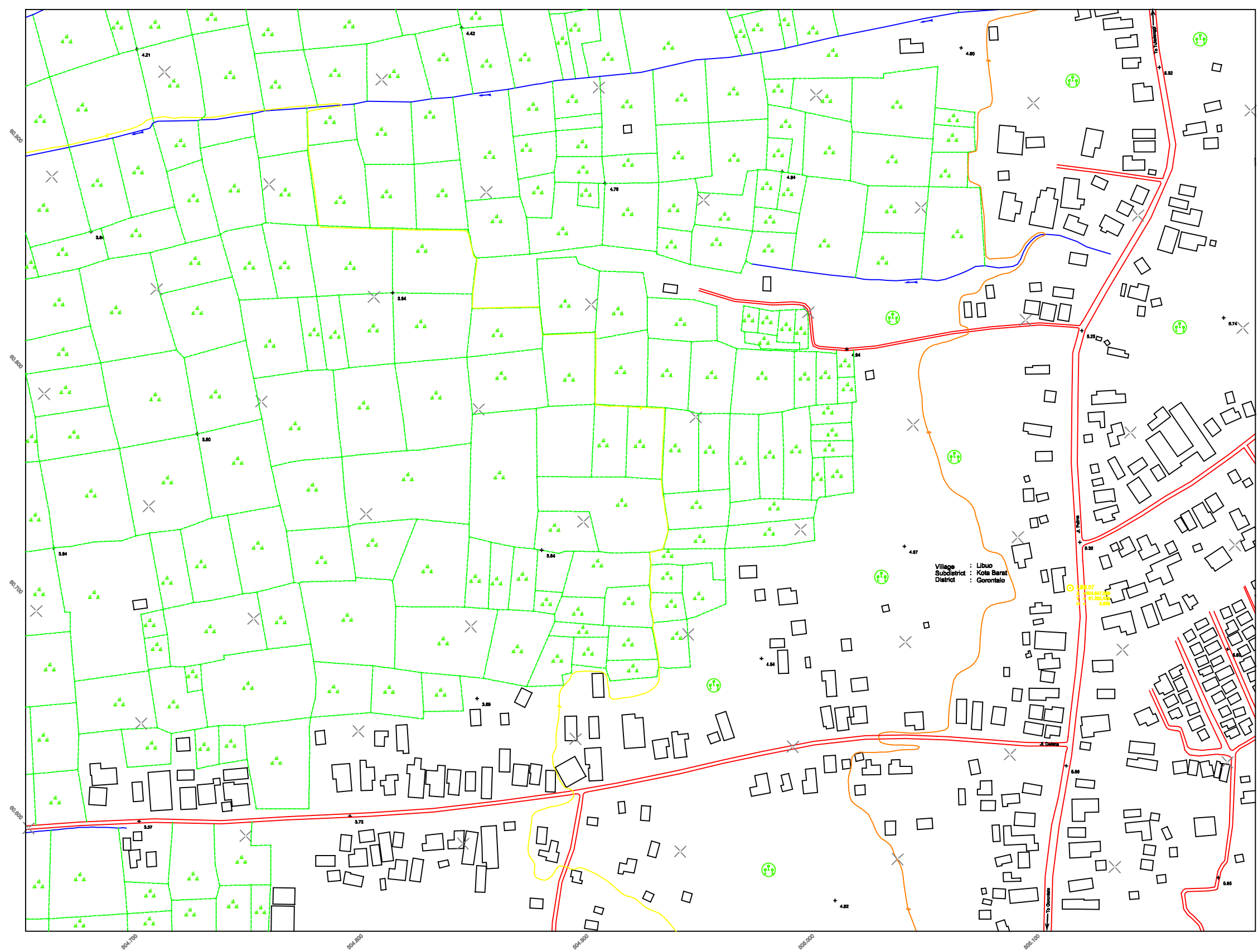
- Aerial Photography (1 / 10.000) : August 2001
 - Topographic map (1 / 1.000) : October 2001
 - Horizontal System : UTM (61 Zone)
 - Elevation System : MSL
 - Contour Interval : 1 m

**DIRECTORATE GENERAL OF WATER RESOURCES,
 MINISTRY OF SETTLEMENT AND REGIONAL INFRASTRUCTURE**

**THE STUDY ON FLOOD CONTROL AND WATER MANAGEMENT
 IN LIMBOTO - BOLANGO - BONE BASIN**

TOPOGRAPHIC MAP : LOW-LYING AREA / GORONTALO

| | | | |
|--------------------|----------------------|-----------------|------------------|
| Checked by | | Approved by | |
| Name | PT. ATLAS DELTASATYA | Name | Isao Sawahito |
| Signature | | Signature | |
| Date | October 9, 2001 | Date | October 19, 2001 |
| | | | |
| | | | |
| COOPERATION AGENCY | | SHEET No. 04/22 | |



LEGEND

| | |
|--|---|
| <ul style="list-style-type: none"> Elevation Triangulation Point GPS Point Elevation Bench Mark Spot Height House / Building Factory Public Hall Police Station Fire Station Post Office Mosque Church Hospital School Medical Center Telephone Office Government Office Hotel Gasoline Pump Road Main Road Bridge Station Subdistrict Boundary Village Boundary | <ul style="list-style-type: none"> Elevation Power Line Quays and Embankment Swamp Muslim graves Christian cemetery Chinese graves Public field Boundary of Vegetation Field Forest Grass Tree Water hole Lubang Air Sluice Pipe Culvert Gorong-gorong Monuments Tiwu Contour Line Garis Kontur Pond, lake, kolam, damu Sand Pass Land Slide Tebing a. River / Sungai b. Rivulet / Anak Sungai c. Direction / Arak Sungai |
|--|---|

INDEX MAP

| | |
|---|--|
| <ul style="list-style-type: none"> - Aerial Photography (1/10,000) - Topographic map (1/1,000) - Horizontal System - Elevation System - Contour Interval | <ul style="list-style-type: none"> : August 2001 : October 2001 : UTM (81 Zone) : MSL : 1 m |
|---|--|

**DIRECTORATE GENERAL OF WATER RESOURCES,
MINISTRY OF SETTLEMENT AND REGIONAL INFRASTRUCTURE**

**THE STUDY ON FLOOD CONTROL AND WATER MANAGEMENT
IN LIMBOTO - BOLANGO - BONE BASIN**

TOPOGRAPHIC MAP : LOW-LYING AREA / GORONTARO

| | | | |
|------------|----------------------|-------------|------------------|
| Checked by | | Approved by | |
| Name | PT. ATLAS DELTASATYA | Name | Isao Iwashima |
| Signature | | Signature | |
| Date | October 9, 2001 | Date | October 19, 2001 |

JICA
JAPAN INTERNATIONAL
COOPERATION AGENCY

PT. ATLAS DELTASATYA

SHEET No.
06/22