

The Study on Flood Control and Water Management in Limboto-Bolango-Bone Basin in the Republic of Indonesia
 Japan International Cooperation Agency

Figure 2.4.1
FOREST CLASSIFICATION IN STUDY AREA

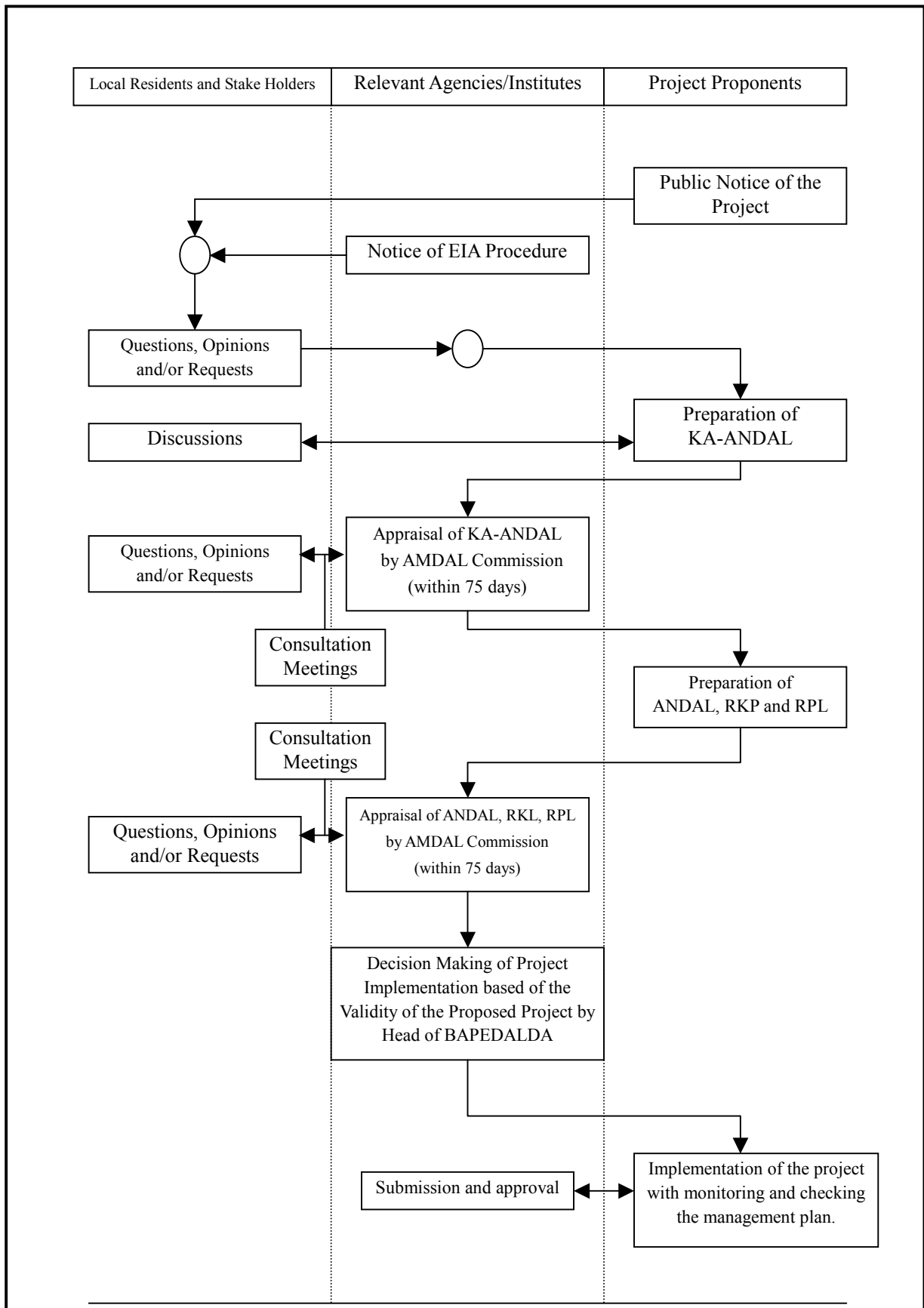
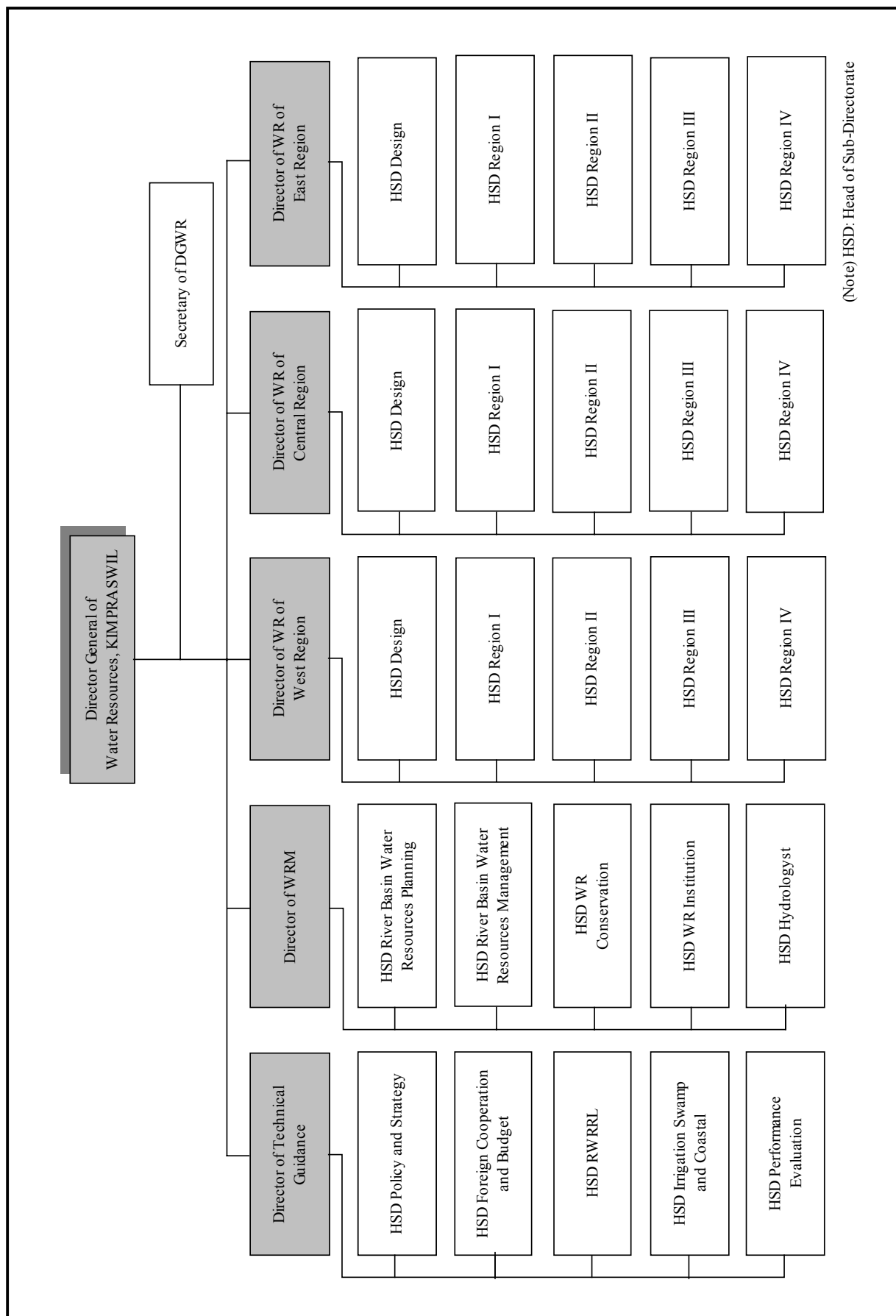
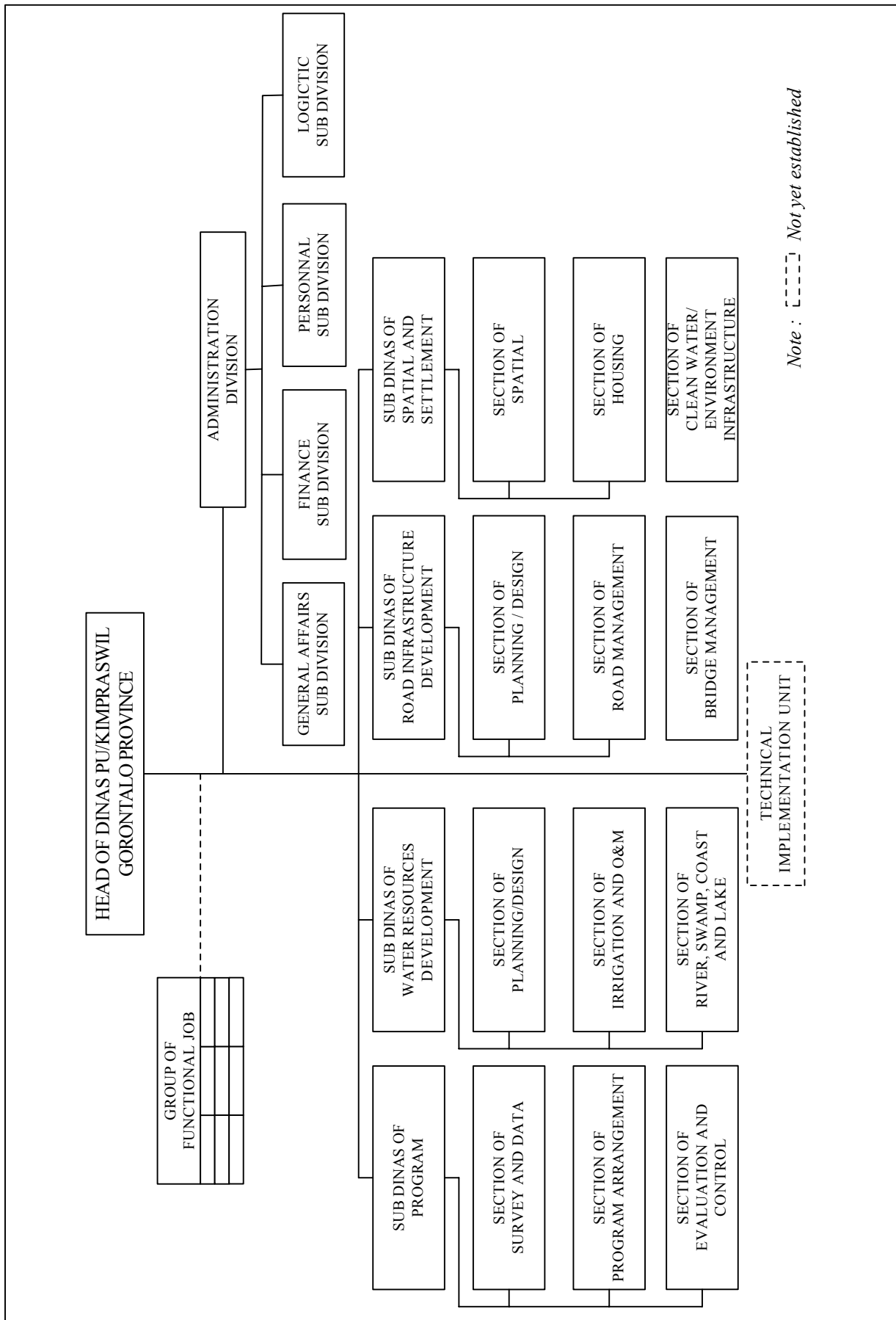


Figure 2.4.2
PROCEDURAL FLOW OF ENVIRONMENTAL IMPACT ASSESSMENT



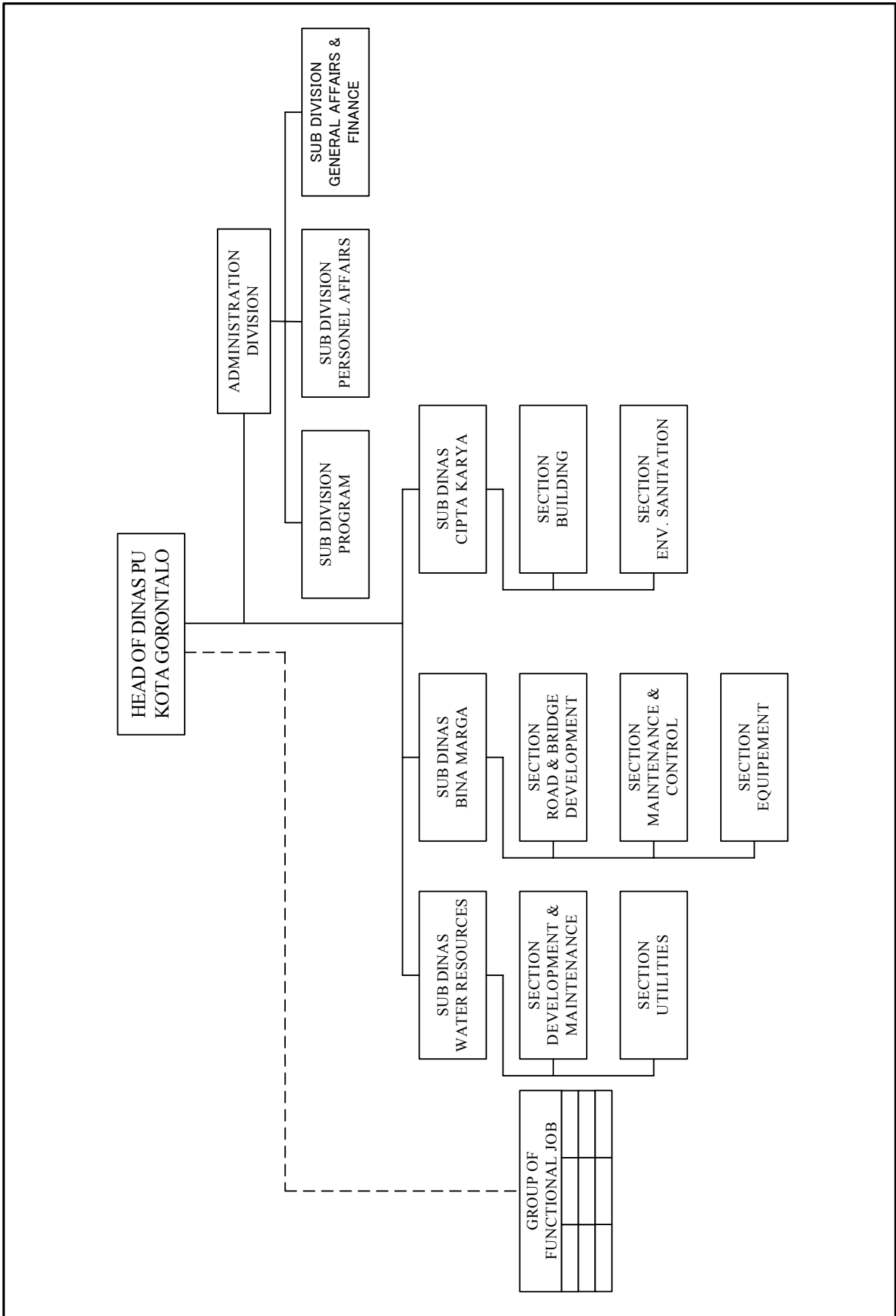
(Note) HSD: Head of Sub-Directorate

Figure 2.7.2 ORGANIZATIONAL STRUCTURE OF DGWR



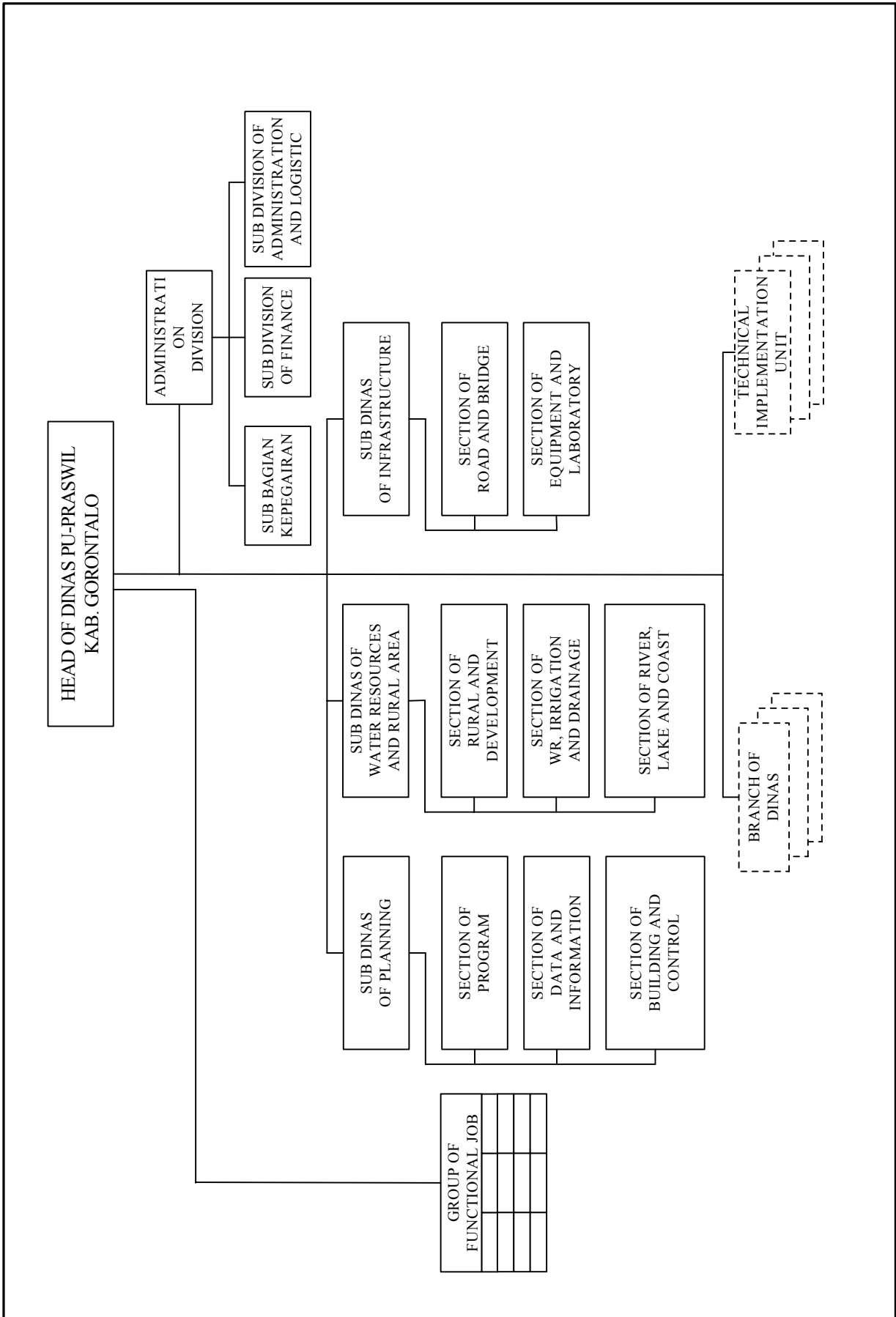
The Study on Flood Control and Water Management in Limboto-Bolango-Bone Basin in the Republic of Indonesia
 Japan International Cooperation Agency

Figure 2.7.3 ORGANIZATION OF DINAS PU/KIMPRASWIL GORONTALO PROVINCE



The Study on Flood Control and Water Management in Limboto-Bolango-Bone Basin in the Republic of Indonesia
 Japan International Cooperation Agency

Figure 2.7.4 ORGANIZATION OF DINAS PU KOTA GORONTALO



The Study on Flood Control and Water Management in Limboto-Bolango-Bone Basin in the Republic of Indonesia
 Japan International Cooperation Agency

Figure 2.7.5 ORGANIZATION OF DINAS PU-PRASWIL KABUPATEN GORONTALO