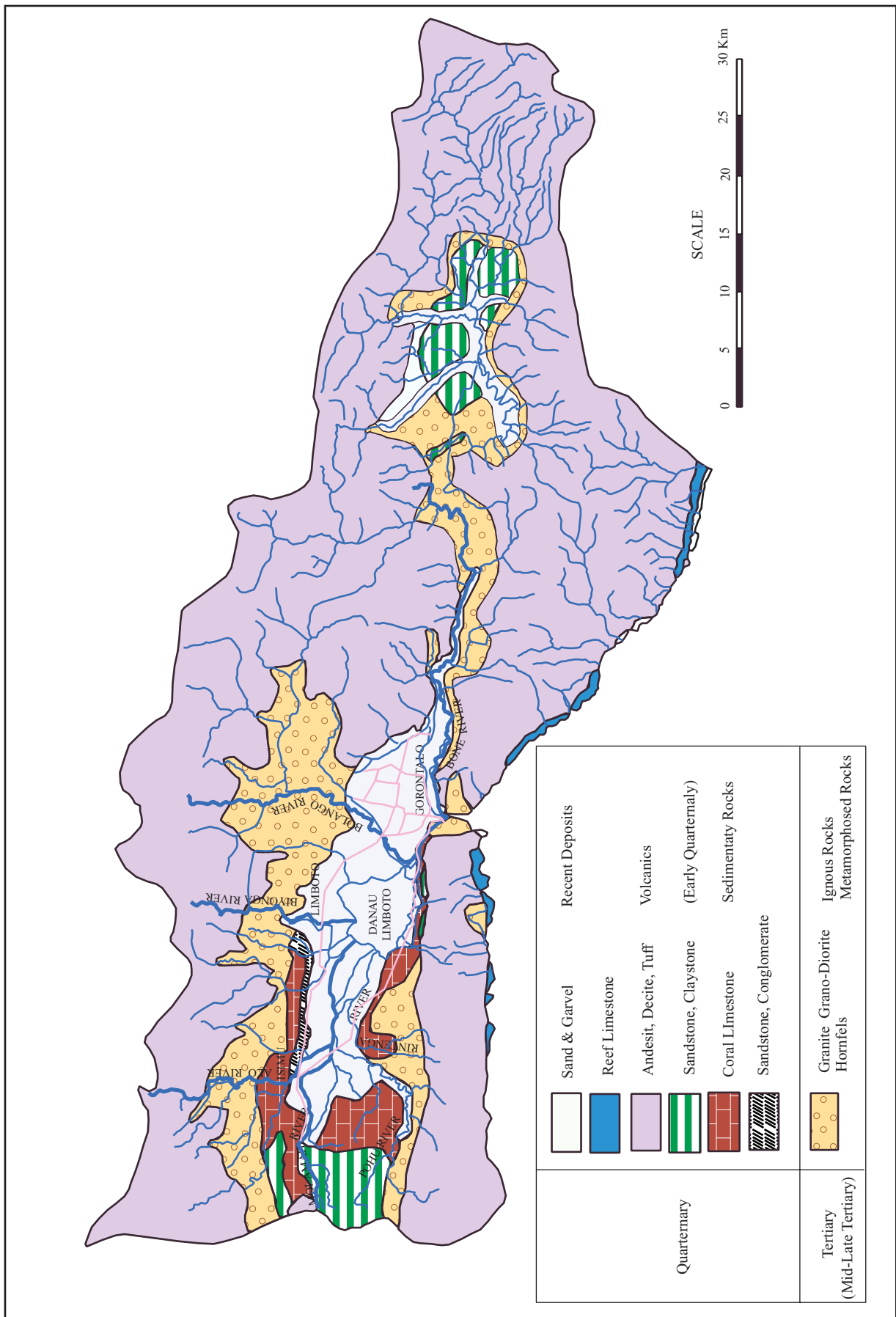


Source: JOG Map - US Army, 1967

*The Study on Flood Control
and Water Management
in Limboto-Bolango-Bone Basin
in the Republic of Indonesia*
Japan International Cooperation Agency

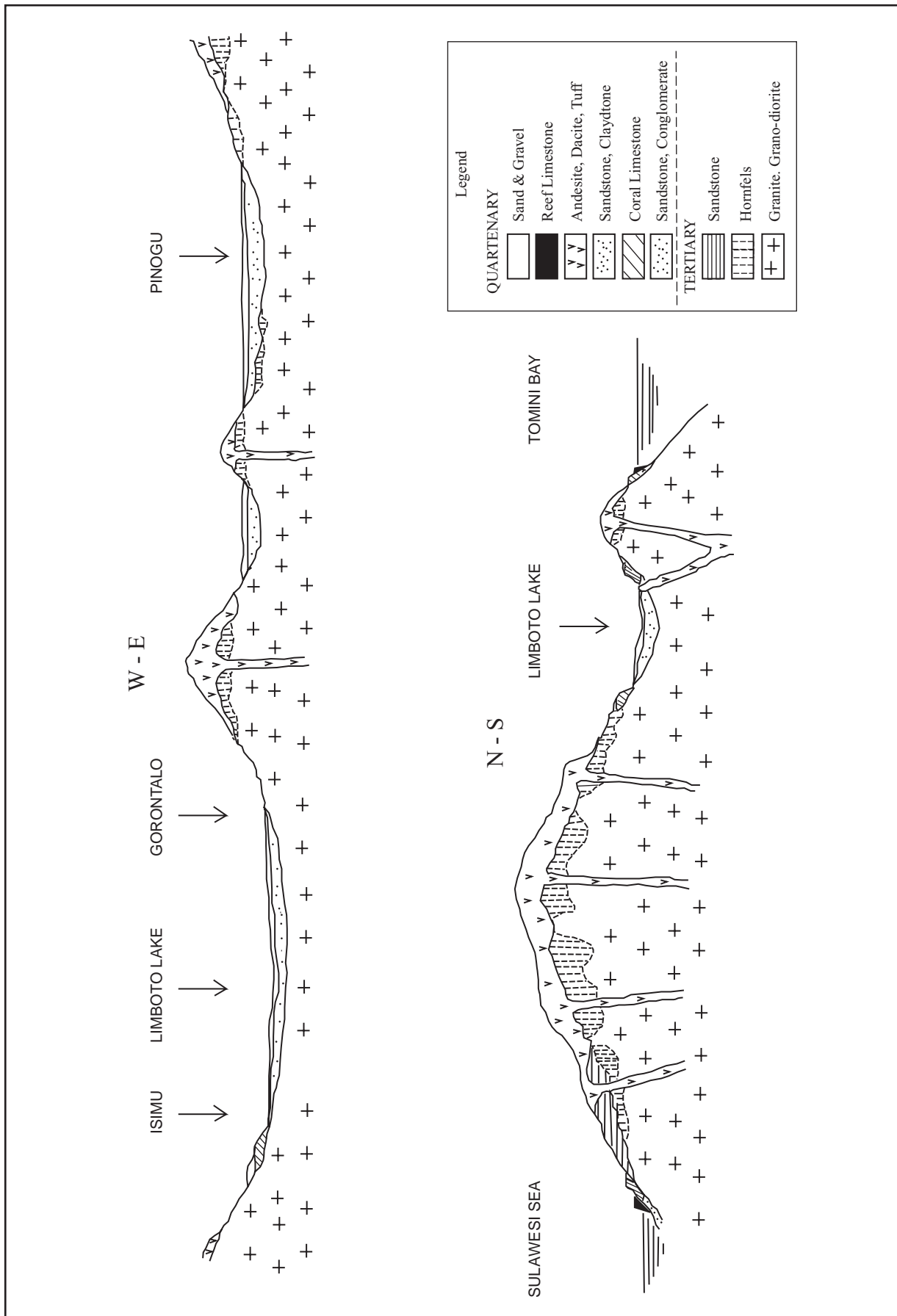
Figure 2.1.1
TOPOGRAPHY OF STUDY AREA



The Study on Flood Control and Water Management in Limboto-Bolango-Bone Basin in the Republic of Indonesia

Japan International Cooperation Agency

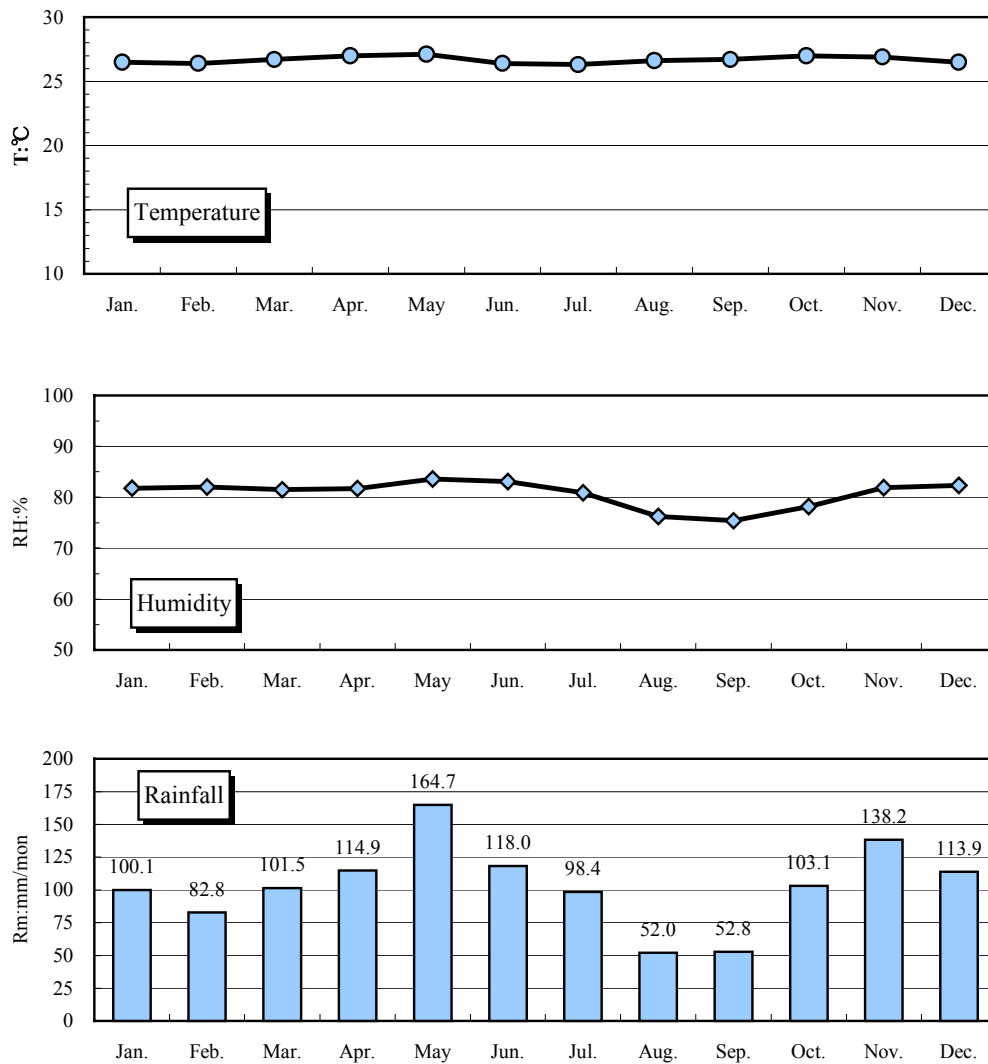
Figure 2.1.2
GEOLOGICAL MAP OF STUDY AREA



The Study on Flood Control and Water Management in Limboto-Bolango-Bone Basin in the Republic of Indonesia
 Japan International Cooperation Agency

Figure 2.1.3
SCHEMATIC GEOLOGICAL PROFILE OF STUDY AREA

STATION : JALALUDDIN AIRPORT



Month	Temperature (T:°C)	Humidity (RH:%)	Rainfall (Rm:mm/mon)
Jan.	26.5	81.8	100.1
Feb.	26.4	82.0	82.8
Mar.	26.7	81.5	101.5
Apr.	27.0	81.7	114.9
May	27.1	83.6	164.7
Jun.	26.4	83.1	118.0
Jul.	26.3	80.9	98.4
Aug.	26.6	76.2	52.0
Sep.	26.7	75.4	52.8
Oct.	27.0	78.2	103.1
Nov.	26.9	81.9	138.2
Dec.	26.5	82.3	113.9
Ave/Total	26.7	80.7	1240.4

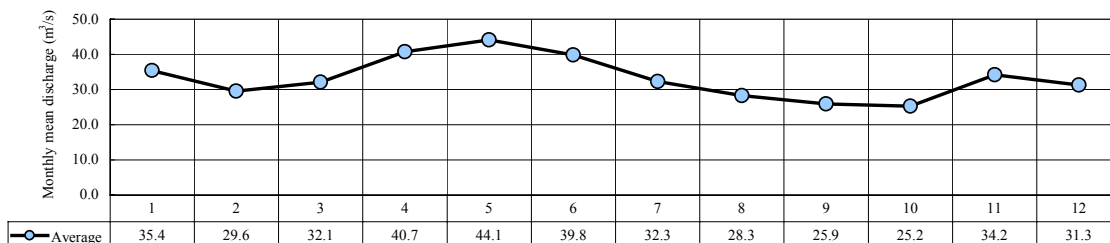
The Study on Flood Control and Water Management in Limboto-Bolango-Bone Basin in the Republic of Indonesia

Japan International Cooperation Agency

Figure 2.2.1

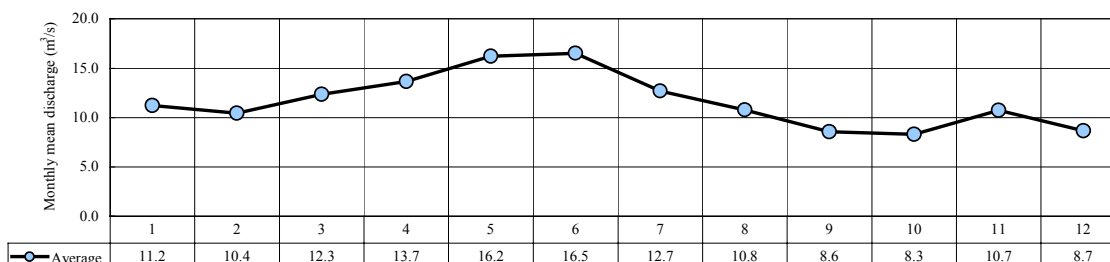
METEOROLOGICAL CONDITIONS

Bone River: Lombongo/Alale Weir (1,060 km²)



Year	Monthly Discharge (m ³ /s)												Annual	
	Jan	Feb	Mar	Apr	May	Jun	Jul	Aug	Sep	Oct	Nov	Dec	m ³ /s	mm/yr
1985	-	-	28.3	29.6	38.5	34.6	33.1	42.8	40.2	42.1	62.4	48.9	-	-
1986	47.6	43.2	42.9	46.9	45.3	41.9	38.6	31.1	26.6	31.0	38.3	33.3	38.9	1157
1987	27.2	27.2	24.5	28.6	34.8	24.1	17.0	17.1	15.0	17.5	20.4	19.8	22.8	677
1988	34.2	35.1	44.5	38.9	65.4	50.7	52.3	57.5	49.7	-	-	-	-	-
1989	-	-	38.0	73.6	25.6	28.0	52.9	41.4	57.3	42.5	44.6	27.4	-	-
1990	53.7	31.3	30.4	49.0	39.5	32.7	16.5	24.1	18.5	32.6	38.3	26.4	32.8	974
1991	47.9	17.3	19.9	46.4	26.5	35.3	22.6	20.5	14.7	14.2	18.4	32.9	26.4	785
1992	23.4	17.4	14.5	14.2	51.5	39.6	26.8	15.6	11.1	19.5	25.0	36.2	24.6	731
1993	26.1	25.4	33.1	35.7	65.9	53.0	25.5	13.5	11.3	12.5	19.6	19.4	28.4	846
1994	23.0	39.9	47.1	44.2	48.0	57.9	37.8	19.2	15.1	15.2	40.6	37.6	35.5	1055
Average	35.4	29.6	32.1	40.7	44.1	39.8	32.3	28.3	25.9	25.2	34.2	31.3	33.2	989
m ³ /s/km ²	0.033	0.028	0.030	0.038	0.042	0.038	0.030	0.027	0.024	0.024	0.032	0.030	0.031	m ³ /s/km ²
mm/mon	89	67	81	100	111	97	82	71	63	64	84	79	989	mm/yr
													Cv=	0.57 %

Bolango River: Boidu Tapa/Lomaya Weir (388 km²)



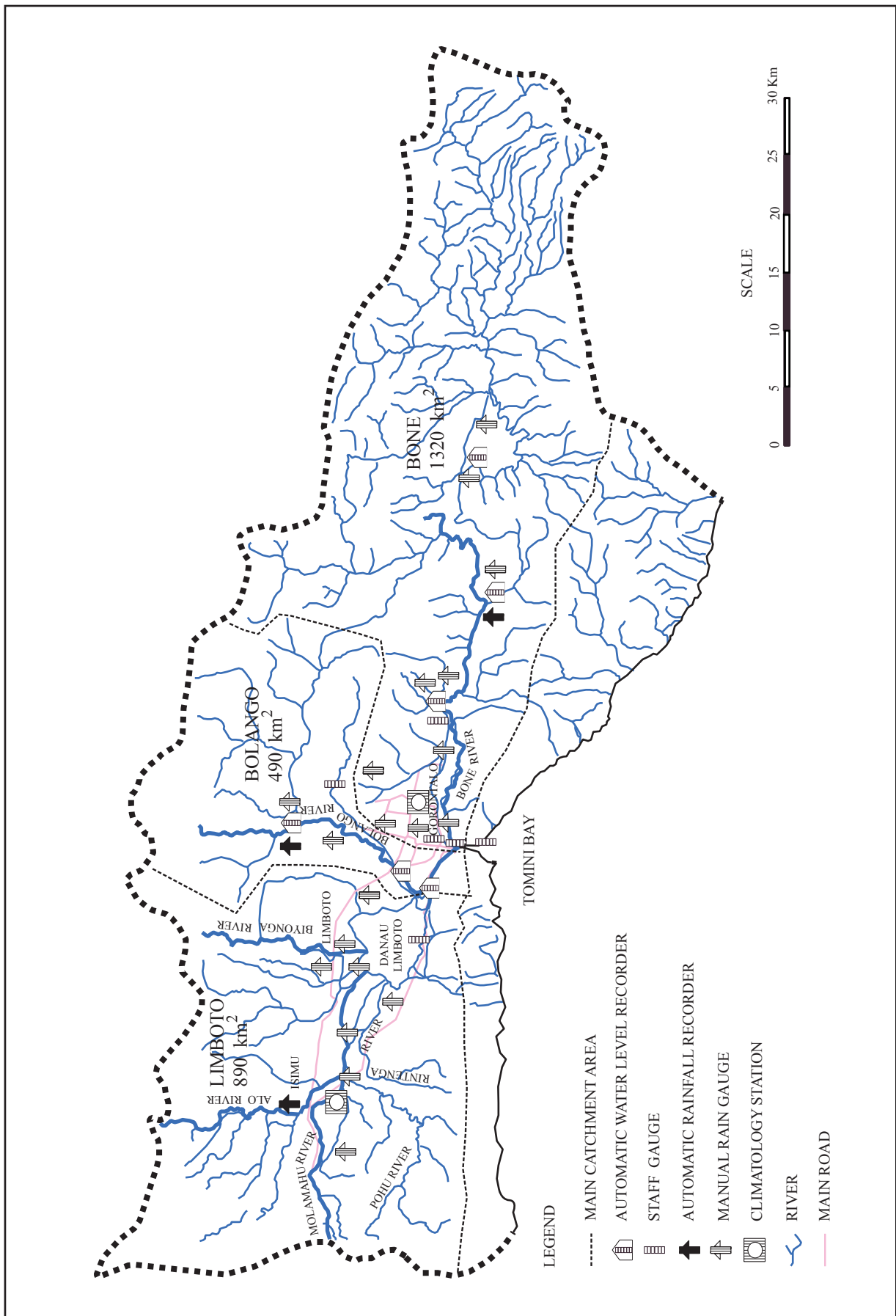
Year	Month												Annual	
	Jan	Feb	Mar	Apr	May	Jun	Jul	Aug	Sep	Oct	Nov	Dec	m ³ /s	mm/yr
1985	-	9.2	8.4	5.4	24.3	19.4	6.8	5.2	6.6	8.5	19.6	11.3	-	-
1986	9.4	9.2	17.3	15.2	22.8	12.7	7.8	5.2	5.7	6.5	11.3	4.0	10.6	862
1987	10.9	6.3	7.1	7.2	7.5	5.7	3.0	2.2	2.3	4.3	7.2	4.1	5.7	460
1988	4.5	11.0	10.2	16.4	21.3	10.5	8.5	17.0	15.8	13.9	14.4	10.3	12.8	1043
1989	19.1	11.6	15.5	15.9	10.8	13.8	15.9	10.2	14.2	15.2	13.4	8.7	13.7	1113
1990	13.6	10.7	12.4	23.8	15.9	10.6	8.6	6.9	13.0	9.9	10.9	4.8	11.8	956
1991	13.2	7.5	6.2	12.8	16.2	15.2	6.5	4.1	2.0	1.9	3.1	7.2	8.0	649
1992	3.8	4.5	2.6	4.3	10.7	14.8	5.0	4.0	2.1	5.4	7.4	14.2	6.6	534
1993	9.6	5.2	4.5	5.2	15.9	21.5	10.7	4.2	3.4	4.0	8.7	5.5	8.2	666
1994	8.3	14.1	26.0	14.7	18.1	25.5	11.8	4.7	2.6	2.9	7.1	7.5	11.9	971
1995	17.0	14.0	13.1	13.1	17.8	26.4	33.9	47.7	20.2	14.6	15.0	11.7	20.4	1656
1996	11.3	20.3	25.7	12.8	7.0	29.4	39.4	25.4	21.1	18.7	15.3	15.4	20.2	1639
1997	13.7	11.8	11.6	30.7	22.4	9.4	7.1	3.4	2.3	2.3	6.3	7.7	10.7	870
Average	11.2	10.4	12.3	13.7	16.2	16.5	12.7	10.8	8.6	8.3	10.7	8.7	11.7	949
m ³ /s/km ²	0.029	0.027	0.032	0.035	0.042	0.043	0.033	0.028	0.022	0.021	0.028	0.022	0.030	m ³ /s/km ²
mm/mon	77	65	85	91	112	110	88	74	57	57	72	60	950	mm/yr
													Cv=	0.70 %

The Study on Flood Control and Water Management in Limboto-Bolango-Bone Basin in the Republic of Indonesia

Japan International Cooperation Agency

Figure 2.2.2

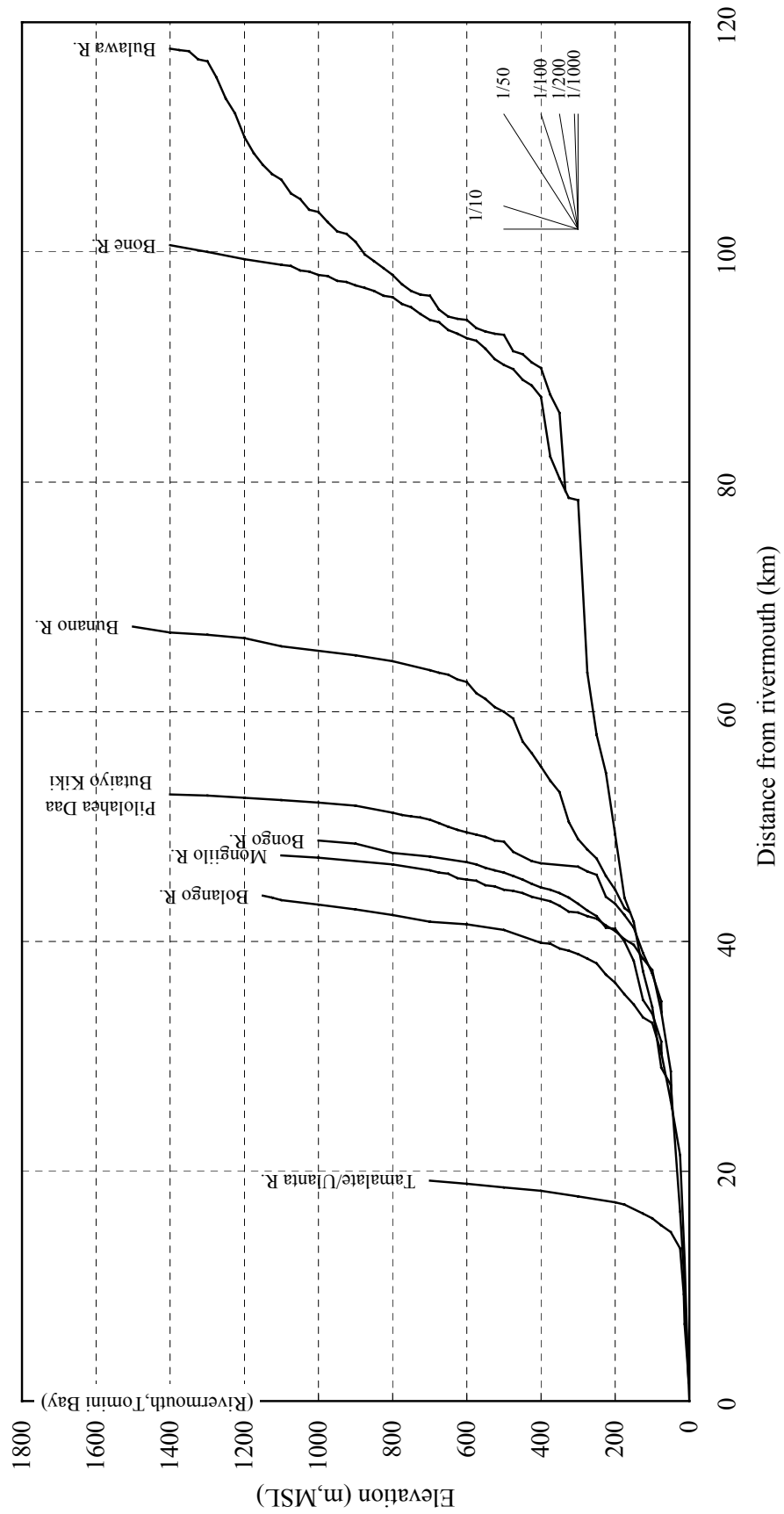
MONTHLY DISCHARGES



*The Study on Flood Control
and Water Management
in Limboto-Bolango-Bone Basin
in the Republic of Indonesia*

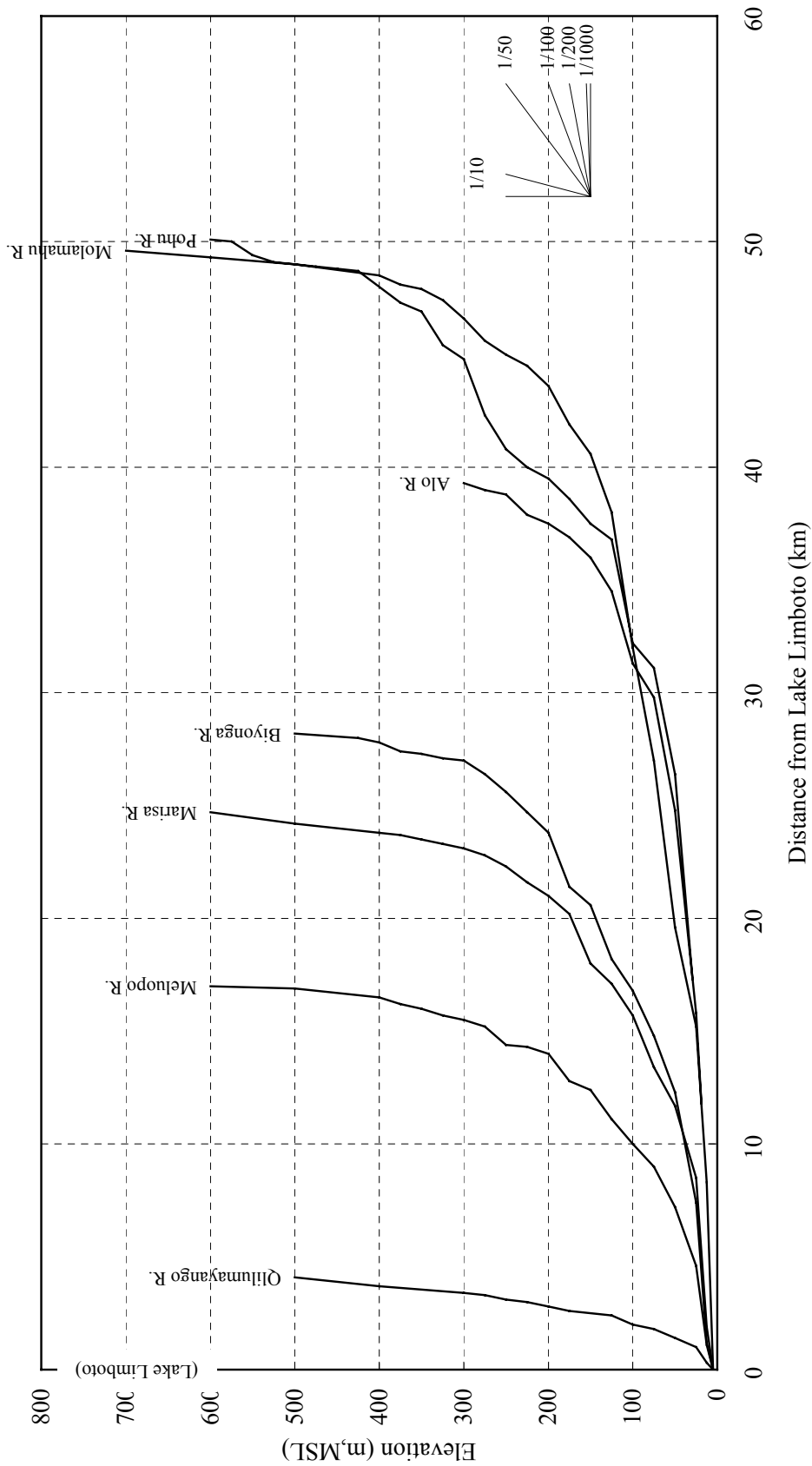
Japan International Cooperation Agency

**Figure 2.2.3
LOCATION OF HYDROLOGICAL STATIONS
IN LBB BASIN**



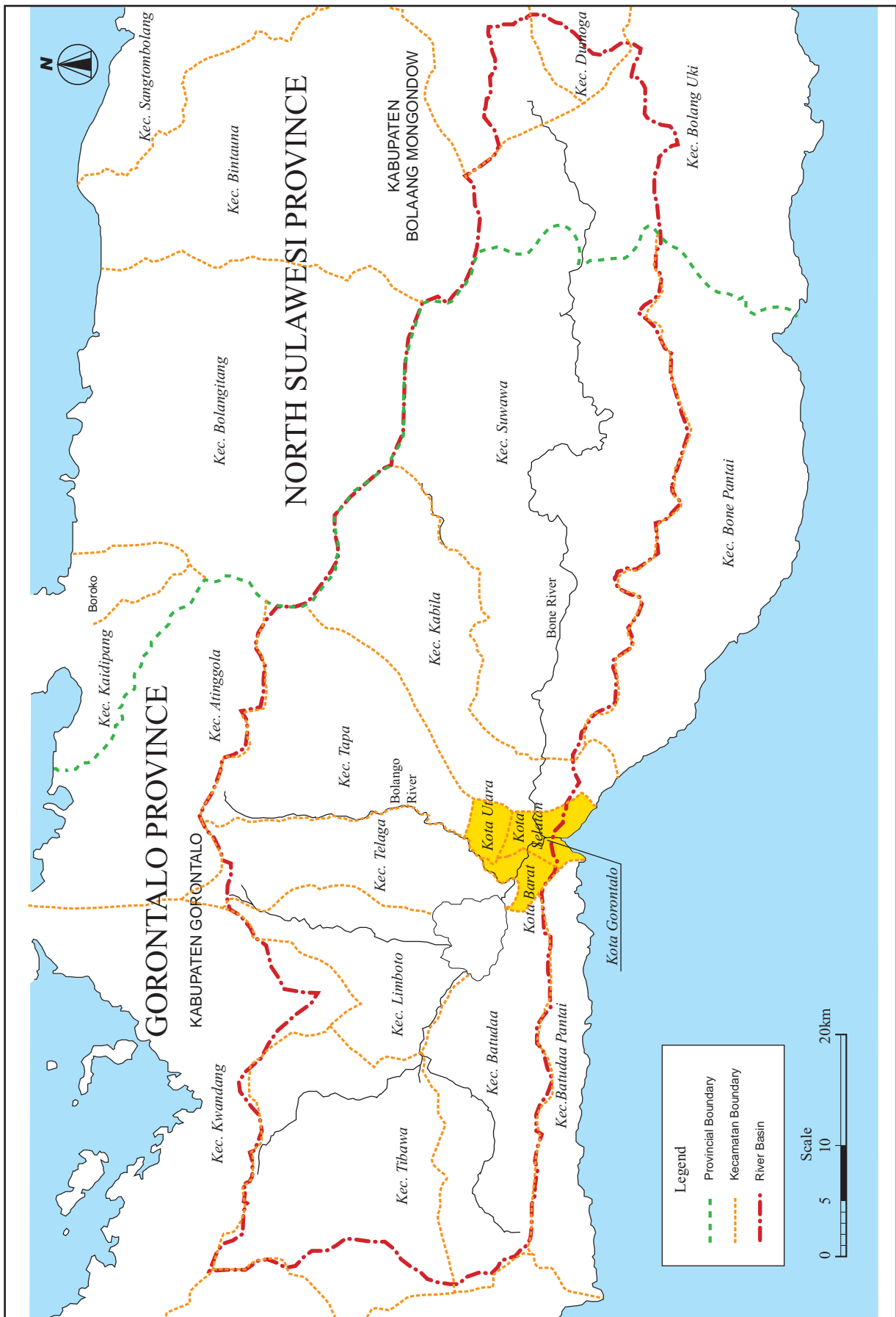
*The Study on Flood Control
and Water Management
in Limboto-Bolango-Bone Basin
in the Republic of Indonesia*
Japan International Cooperation Agency

Figure 2.3.1
OVERALL LONGITUDINAL PROFILE :
BONE - BOLANGO RIVER SYSTEM



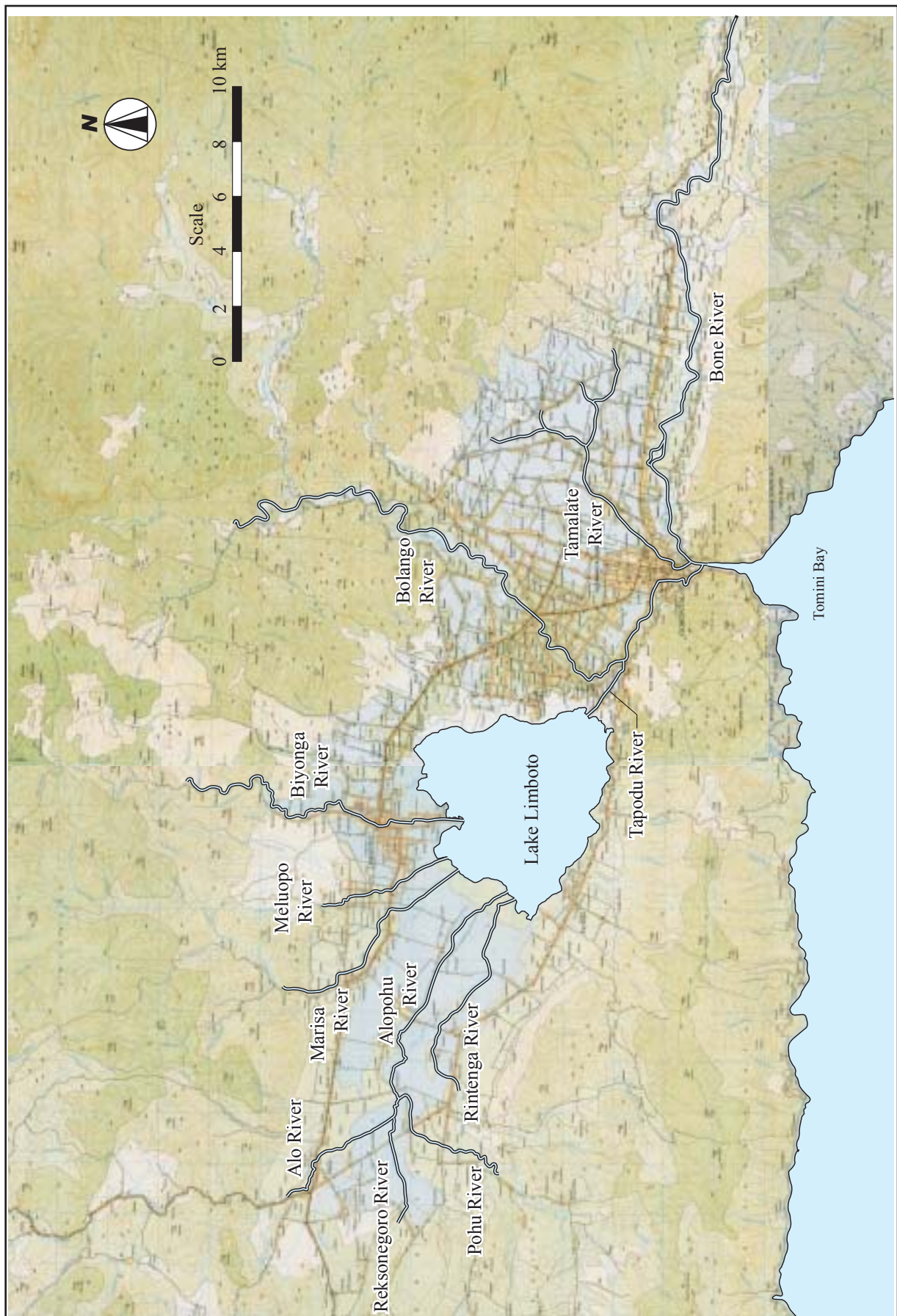
*The Study on Flood Control
and Water Management
in Limboto-Bolango-Bone Basin
in the Republic of Indonesia*
Japan International Cooperation Agency

Figure 2.3.2
OVERALL LONGITUDINAL PROFILE :
LAKE LIMBOTO SYSTEM



The Study on Flood Control and Water Management in Limboto-Bolango-Bone Basin in the Republic of Indonesia
 Japan International Cooperation Agency

Figure 2.3.3
ADMINISTRATIVE BOUNDARIES OF LBB BASIN

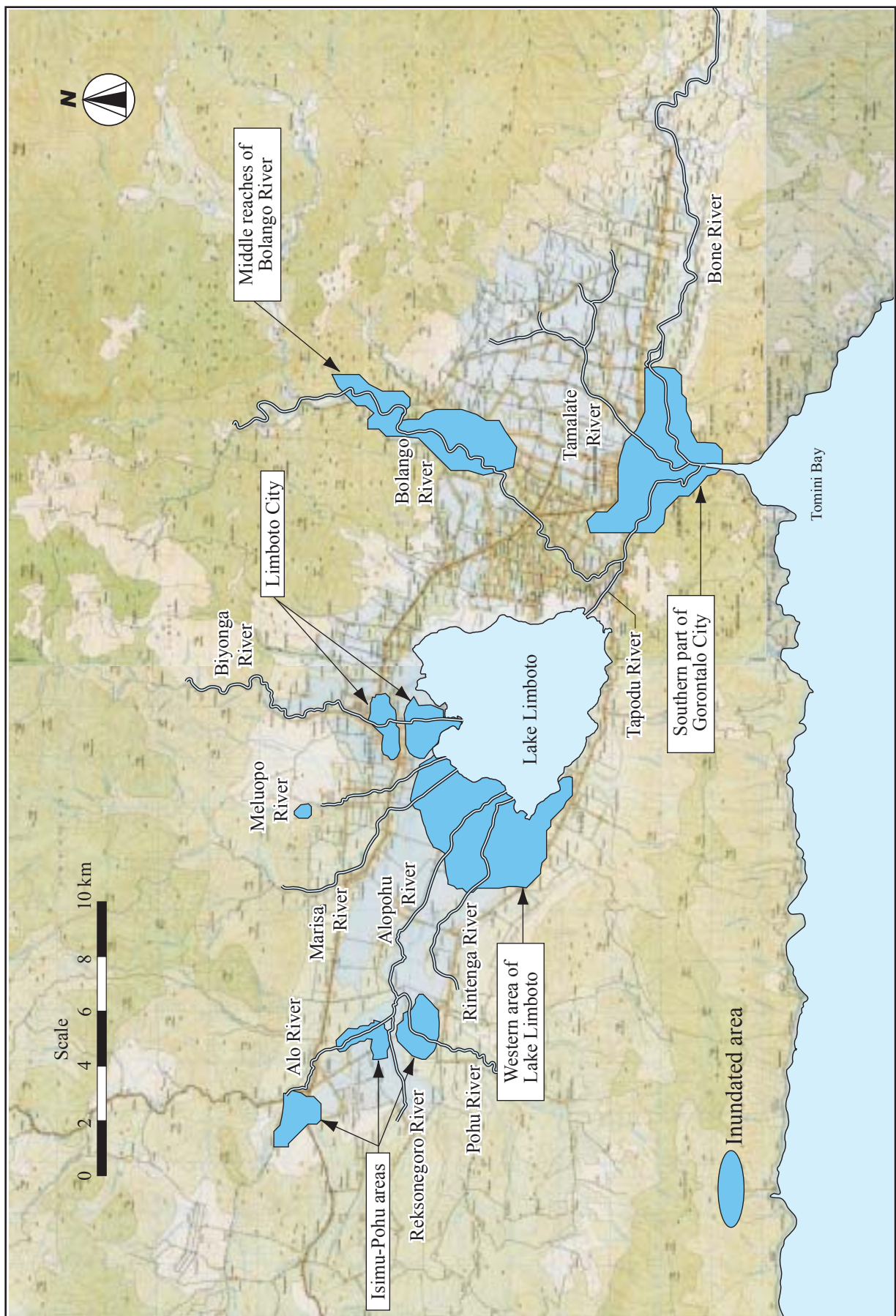


*The Study on Flood Control
and Water Management
in Limboto-Bolango-Bone Basin
in the Republic of Indonesia*

Japan International Cooperation Agency

Figure 2.3.4

RIVER SYSTEM IN PLAIN AREA



*The Study on Flood Control
and Water Management
in Limboto-Bolango-Bone Basin
in the Republic of Indonesia*
Japan International Cooperation Agency

Figure 2.3.5
FREQUENTLY INUNDATED AREAS