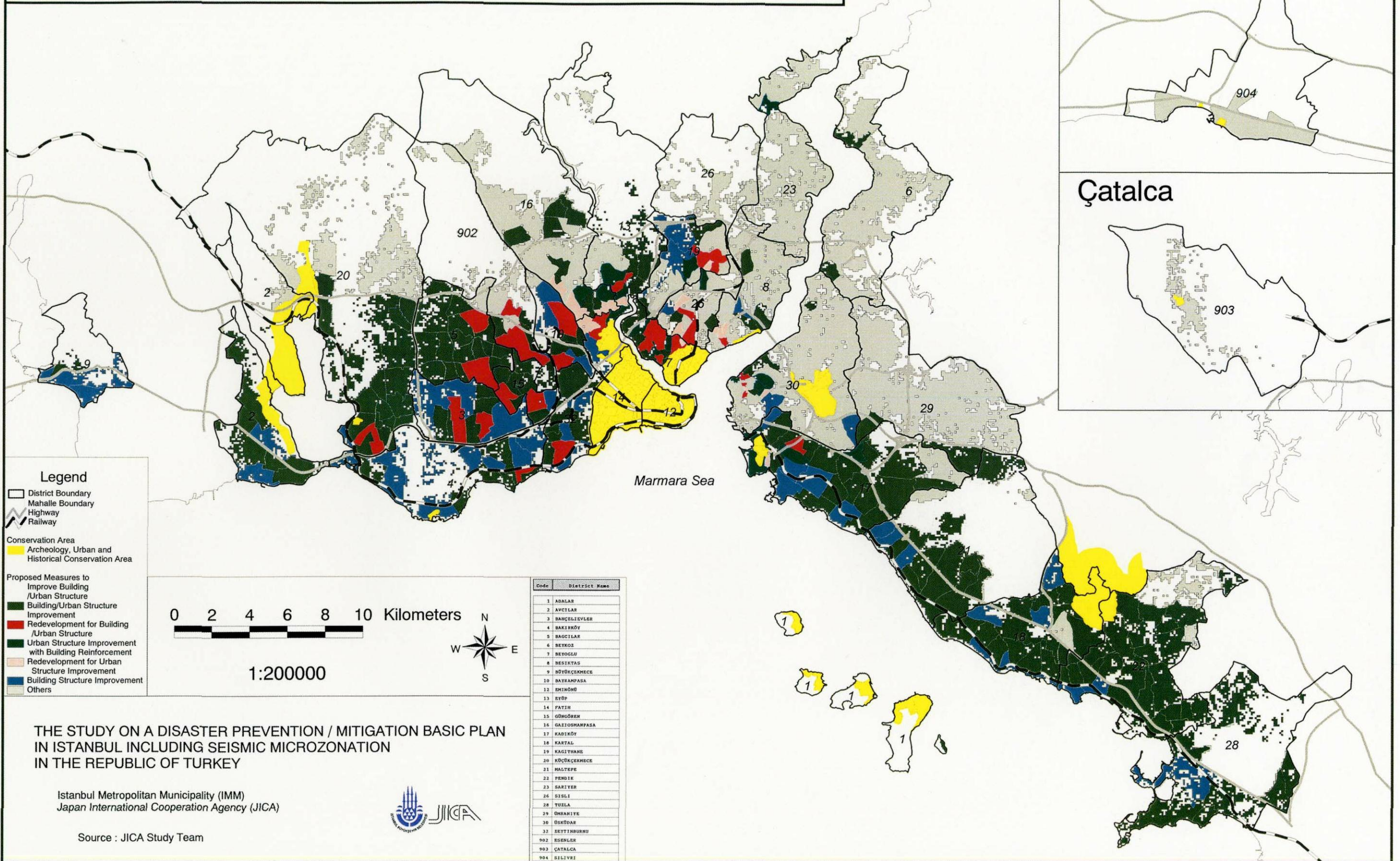


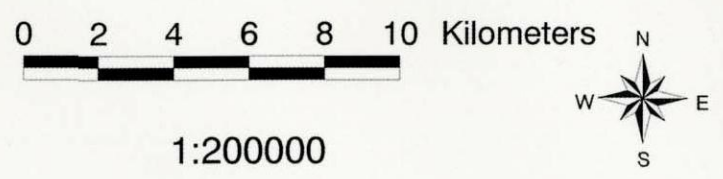
Proposed Measures to Improve Building/Urban Structure

Bina/Kentsel Yapının İyileştirilmesi için Önerilen Tedbirler



Legend

- District Boundary
- Mahalle Boundary
- Highway
- Railway
- Conservation Area
 - Archeology, Urban and Historical Conservation Area
- Proposed Measures to Improve Building /Urban Structure
 - Building/Urban Structure Improvement
 - Redevelopment for Building /Urban Structure
 - Urban Structure Improvement with Building Reinforcement
 - Redevelopment for Urban Structure Improvement
 - Building Structure Improvement
 - Others



Code	District Name
1	ADALAR
2	AVCIILAR
3	BANÇELİEVLER
4	BAKIRKÖY
5	BACILAR
6	BEKOL
7	BEYOĞLU
8	BESIKTAS
9	BÜYÜKÇEKMECE
10	DAYIRAMPASA
12	EMİNOĞLU
13	EYÜP
14	FATİH
15	GÖNÜDREN
16	GAZIOSMANPASA
17	KADIKÖY
18	KARTAL
19	KAGITHANE
20	KÜÇÜKÇEKMECE
21	MALTEPE
22	PENDEK
23	SARIER
26	DISLI
28	TUZLA
29	ÜSKÜDAR
30	ŞİŞLİ
902	ESERLER
903	ÇATALCA
904	SILIVRI

THE STUDY ON A DISASTER PREVENTION / MITIGATION BASIC PLAN IN ISTANBUL INCLUDING SEISMIC MICROZONATION IN THE REPUBLIC OF TURKEY

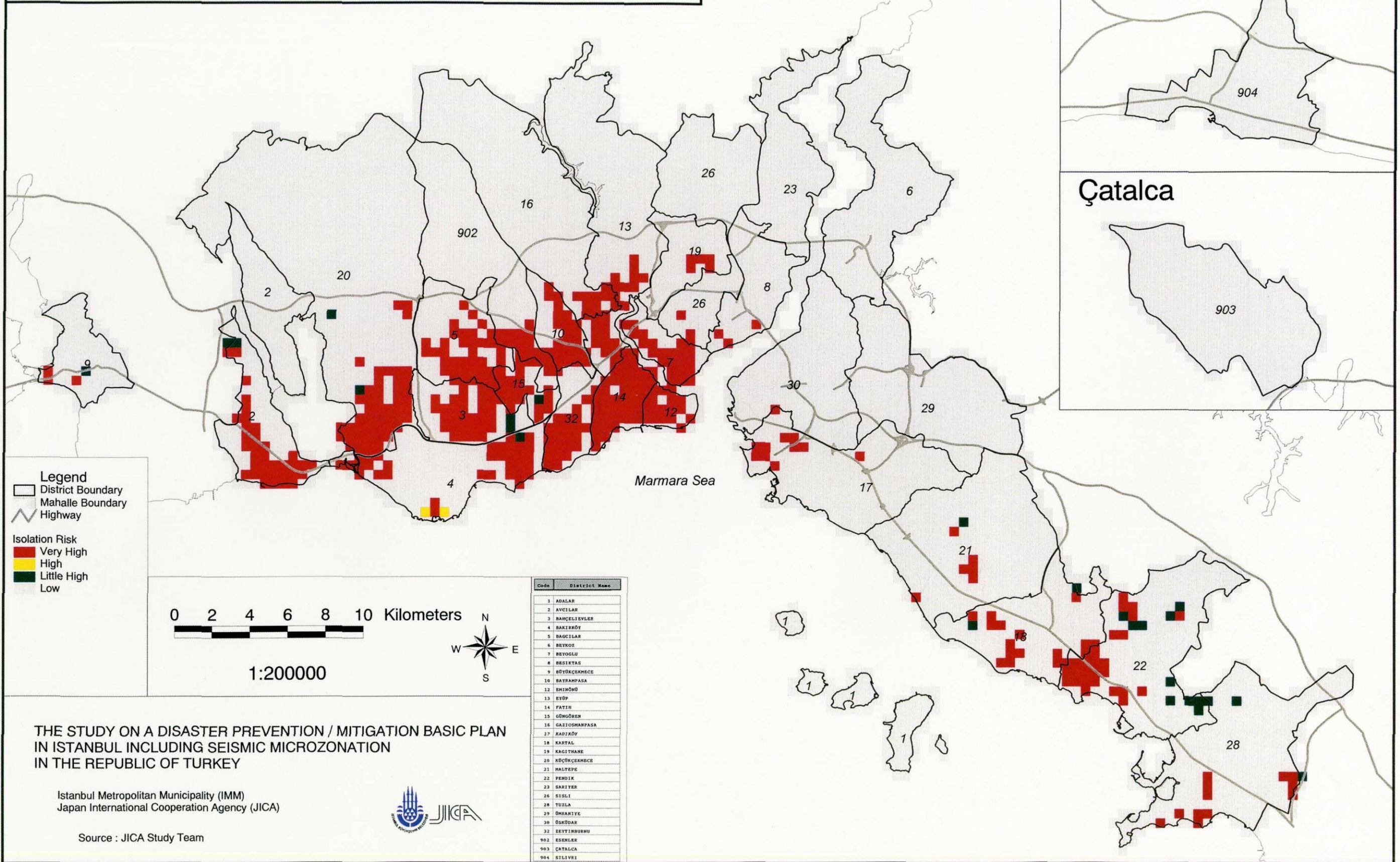
Istanbul Metropolitan Municipality (IMM)
Japan International Cooperation Agency (JICA)



Source : JICA Study Team

Isolation Risk Caused by Road Blockage

Yolların Kapanması Sonucu Ulaşılamayacak Alanlar



THE STUDY ON A DISASTER PREVENTION / MITIGATION BASIC PLAN
 IN ISTANBUL INCLUDING SEISMIC MICROZONATION
 IN THE REPUBLIC OF TURKEY

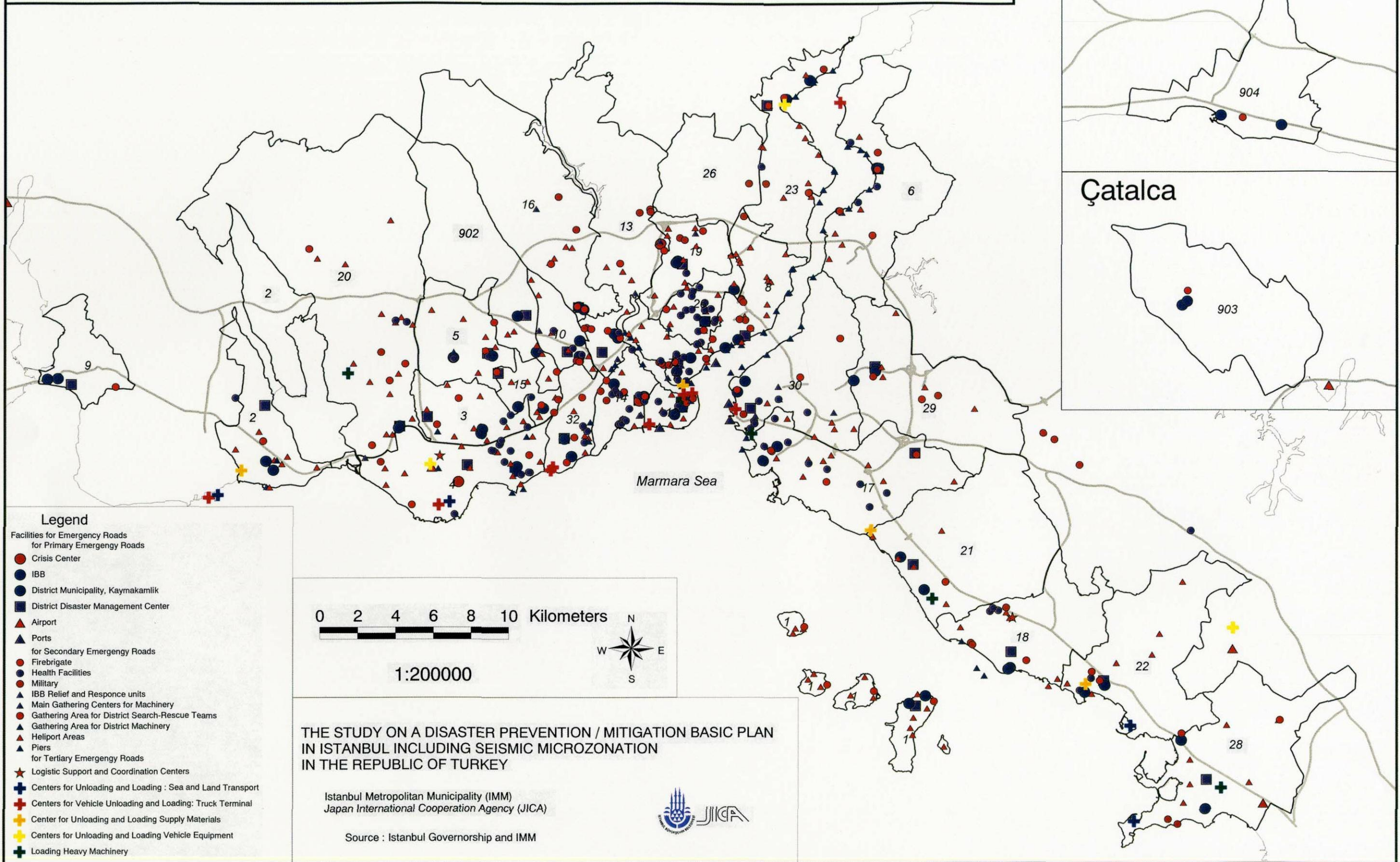
Istanbul Metropolitan Municipality (IMM)
 Japan International Cooperation Agency (JICA)



Source : JICA Study Team

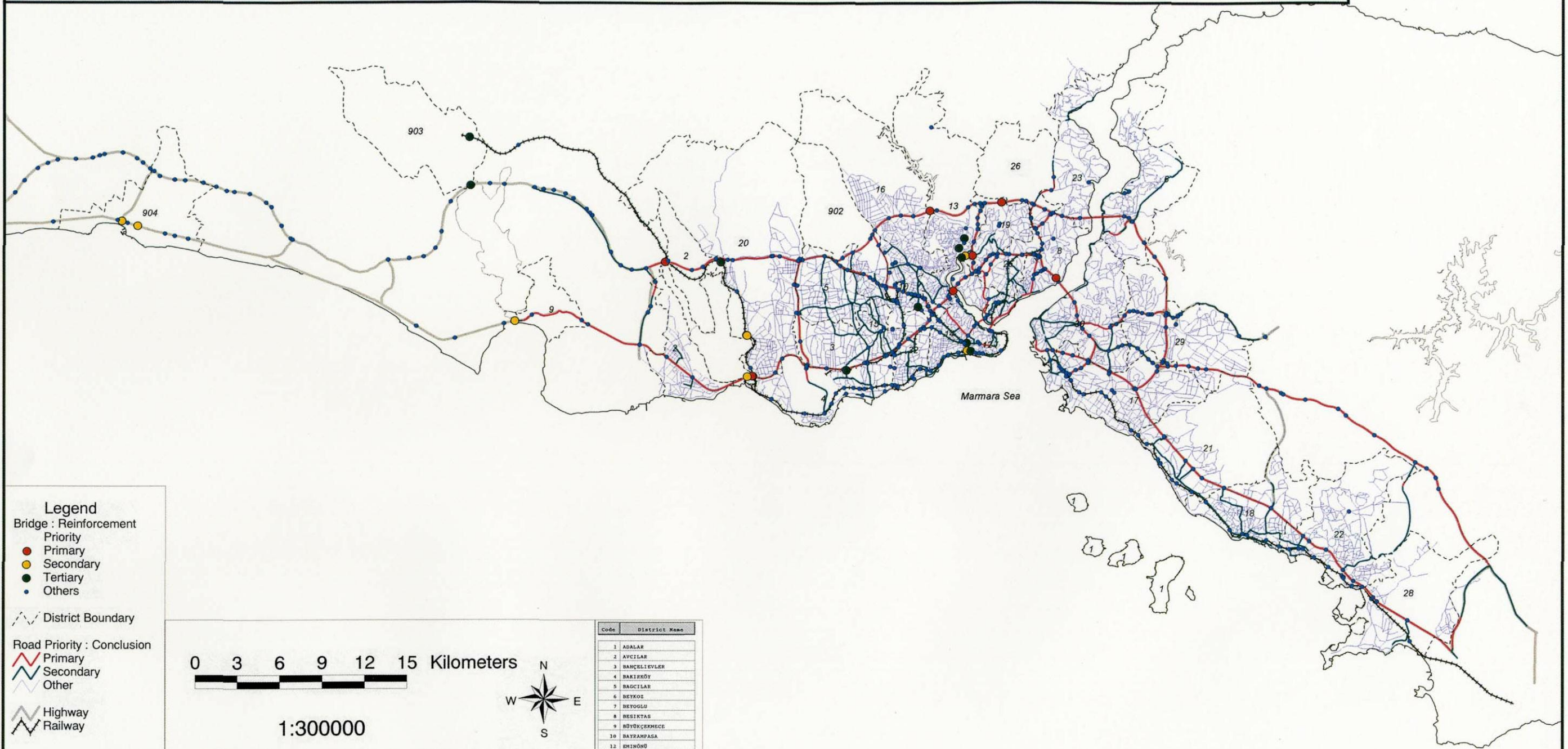
Facilities for Primary, Secondary and Tertiary Emergency Road Study

Birinci, İkinci ve Üçüncü Acil Ulaşım Yollarıyla Bağlanacak Tesislere Ait Çalışma



Bridge with High Damage Potential : Reinforcement Priority Based on Damage Possibility and Priority for Road Network

Hasar Görme Olasılığı Yüksek Köprü: Hasar Görme Olasılığına ve Öncelikli Yol Ağına Göre Güçlendirme Öncelikleri



Legend

Bridge : Reinforcement Priority

- Primary
- Secondary
- Tertiary
- Others

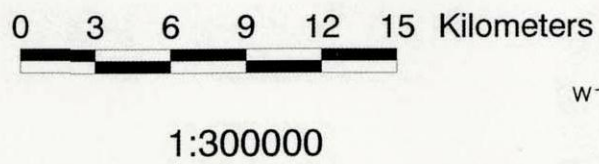
--- District Boundary

Road Priority : Conclusion

- Primary
- Secondary
- Other

— Highway

— Railway



Code	District Name
1	ADALAR
2	AVCILAR
3	BACILIEVLER
4	BAKIRKÖY
5	BAGCILAR
6	BEYKÖZ
7	BEYOĞLU
8	BESIKTAS
9	BÜYÜKÇEKMECE
10	BAYRAMPAŞA
12	EMİNOĞLU
13	KYÖP
14	FATİH
15	GÜNGÖREN
16	GAZIOSMANPAŞA
17	KADIKÖY
18	KARTAL
19	KAGITHANE
20	KÜÇÜKÇEKMECE
21	HALTİPE
22	PENDEK
23	SARIVEREN
24	SİSİLİ
28	TUZLA
29	ÜMRANİYE
29	ÜSKÜDAR
32	ZEYTİNBURNU
902	ESERLER
903	ÇATALCA
904	SİLİVRİ

THE STUDY ON A DISASTER PREVENTION / MITIGATION BASIC PLAN
IN ISTANBUL INCLUDING SEISMIC MICROZONATION
IN THE REPUBLIC OF TURKEY

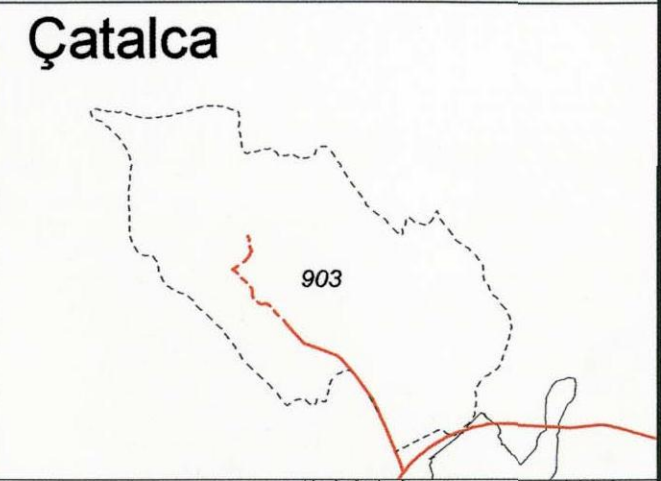
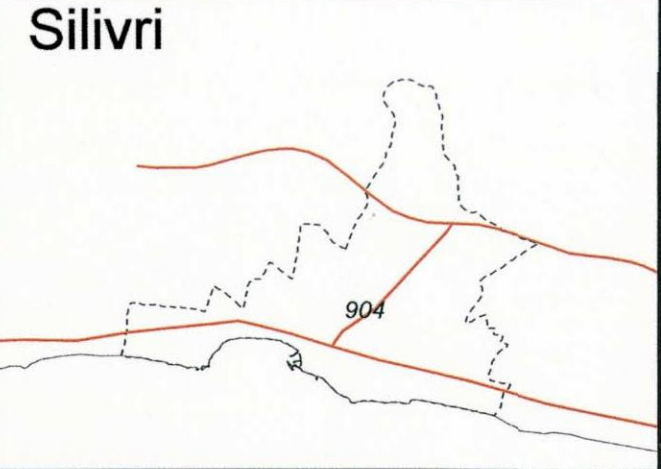
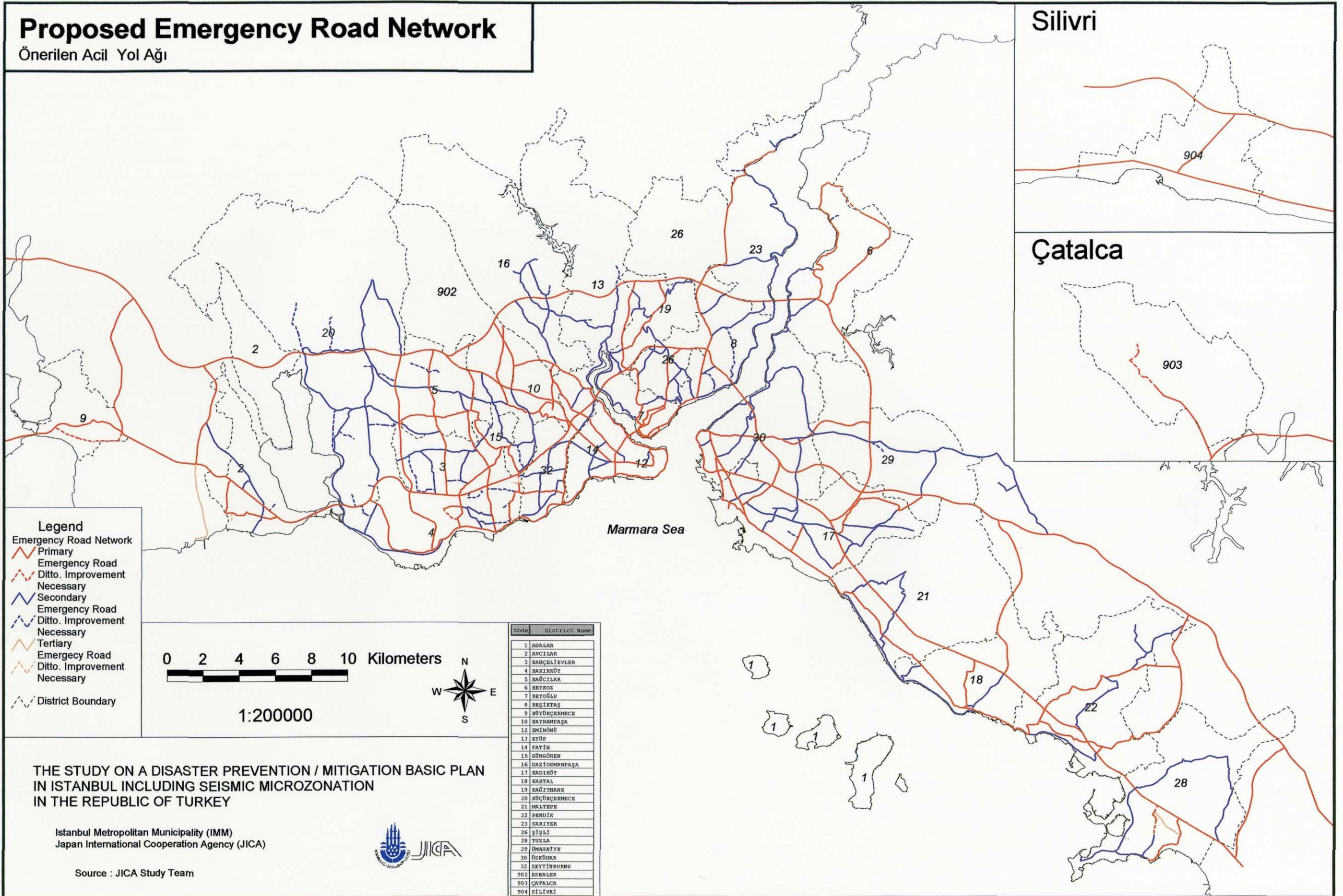
Istanbul Metropolitan Municipality (IMM)
Japan International Cooperation Agency (JICA)



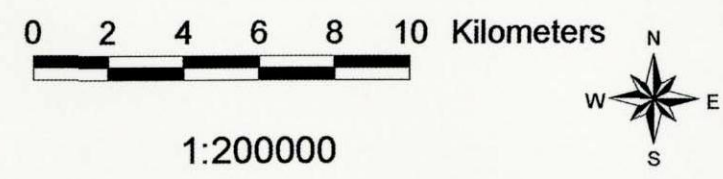
Source : JICA Study Team

Proposed Emergency Road Network

Önerilen Acil Yol Ağı



- Legend**
- Emergency Road Network
 - Primary Emergency Road
 - Ditto. Improvement Necessary
 - Secondary Emergency Road
 - Ditto. Improvement Necessary
 - Tertiary Emergency Road
 - Ditto. Improvement Necessary
 - District Boundary



Code	District Name
1	ADALAR
2	AVCILAR
3	BAĞCIKÖY
4	BAĞCILAR
5	BEYOĞLU
6	BEŞİKTAŞ
7	BÜYÜKÇERMECE
8	HAYRAMPASA
9	EMİNÖNÜ
10	EYÜP
11	FATİH
12	GÜNGÖREN
13	GAZİOSMANPAŞA
14	KADIKÖY
15	KARTAL
16	KAĞITHANE
17	KÜÇÜKÇERMECE
18	MALTEPE
19	PENDEK
20	SARIER
21	ŞİŞLİ
22	TUZLA
23	ÜSKÜDAR
24	ÜMRANİYE
25	ÜSKÜDAR
26	ZEYTİNBURNU
27	ESKİLER
28	ÇATALCA
29	SİLİVRİ

THE STUDY ON A DISASTER PREVENTION / MITIGATION BASIC PLAN IN ISTANBUL INCLUDING SEISMIC MICROZONATION IN THE REPUBLIC OF TURKEY

Istanbul Metropolitan Municipality (IMM)
Japan International Cooperation Agency (JICA)



Source : JICA Study Team

Annex List of All GIS Maps compiled in the Study

List of All GIS Maps compiled in the Study

ID	Figure Number in the Report			Caption		Project File Name in GIS Database System
	Summary	Main Report	GIS Map	English Caption	Turkish Caption	
1			A-2	Mahalle Boundary	Mahalle Sınırları	boundary/mahalle/mahalle_v8
2		1.4.1	A-1	Study Area	Çalışma Alanı	boundary/study_area/study_area_ver8
3		6.2.8	A-19	Building Ratio Distribution by Construction Year : 1950 - 1959	Yapım Yılına Göre Bina Oranlarının Dağılımı : 1950 - 1959	building/building_census/1950_1959_v8
4		6.2.9	A-20	Building Ratio Distribution by Construction Year : 1960 - 1969	Yapım Yılına Göre Bina Oranlarının Dağılımı : 1960 - 1969	building/building_census/1960_1969_v8
5		6.2.10	A-21	Building Ratio Distribution by Construction Year : 1970 - 1979	Yapım Yılına Göre Bina Oranlarının Dağılımı : 1970 - 1979	building/building_census/1970_1979_v8
6		6.2.11	A-22	Building Ratio Distribution by Construction Year : 1980 - 1989	Yapım Yılına Göre Bina Oranlarının Dağılımı : 1980 - 1989	building/building_census/1980_1989_v8
7		6.2.12	A-23	Building Ratio Distribution by Construction Year : 1990 and After	Yapım Yılına Göre Bina Oranlarının Dağılımı : 1990 ve Sonrası	building/building_census/after_1990_v8
8		6.2.7	A-18	Building Ratio Distribution by Construction Year : 1949 and Before	Yapım Yılına Göre Bina Oranlarının Dağılımı : 1949 ve Öncesi	building/building_census/before_1949_v8
9		6.2.4	A-15	Building Density by Mahalle	Mahallelere Göre Bina Yoğunluğu	building/building_census/building_density_v8
10		6.2.3	A-14	Number of Building by Mahalle	Mahallelere Göre Bina Sayısı	building/building_census/building_v8
11				Building Ratio Distribution by Structure Frame Structure: Other	Yapı Türüne Göre Bina Oranlarının Dağılımı, Karkas Yapı : Diğer	building/building_census/fs_other_v8
12		6.2.5	A-16	Building Ratio Distribution by Structure Frame Structure: RC	Yapı Türüne Göre Bina Oranlarının Dağılımı, Karkas Yapı : Betonarme	building/building_census/fs_rc_v8
13				Building Ratio Distribution by Structure Frame Structure: Steel	Yapı Türüne Göre Bina Oranlarının Dağılımı, Karkas Yapı : Çelik	building/building_census/fs_steel_v8
14				Building Ratio Distribution by Structure Frame Structure: Wood	Yapı Türüne Göre Bina Oranlarının Dağılımı, Karkas Yapı : Ahşap	building/building_census/fs_wood_v8
15		6.2.6	A-17	Building Ratio Distribution by Structure Masonry Structure: Briquette, Brick	Yapı Türüne Göre Bina Oranlarının Dağılımı, Kagir Yapı : Briket, Tuğla	building/building_census/ms_brick_v8
16				Building Ratio Distribution by Structure Masonry Structure: Other	Yapı Türüne Göre Bina Oranlarının Dağılımı, Kagir Yapı : Diğer	building/building_census/ms_other_v8
17				Building Ratio Distribution by Structure Masonry Structure: Stone	Yapı Türüne Göre Bina Oranlarının Dağılımı, Kagir Yapı : Taş	building/building_census/ms_stone_v8
18				Building Ratio Distribution by Structure Masonry Structure: Adobe	Yapı Türüne Göre Bina Oranlarının Dağılımı, Kagir Yapı : Kerpiç	building/building_census/ms_sun_dried_brick_v8
19				Population Density by Building (Persons/Building)	Binalara Göre Nüfus Yoğunluğu (kişi/bina)	building/building_census/population_density_by_building_v8
20		6.2.13	A-24	Building Ratio Distribution by Story : 1 - 3 Stories	Kat Adedine Göre Bina Oranlarının Dağılımı : 1 - 3 Katlılar	building/building_census/story_1_3_v8
21		6.2.16	A-27	Building Ratio Distribution by Story : 16 and Over Stories	Kat Adedine Göre Bina Oranlarının Dağılımı : 16 ve Daha Yüksek Katlılar	building/building_census/story_16_and_over_v8
22		6.2.14	A-25	Building Ratio Distribution by Story : 4 - 7 Stories	Kat Adedine Göre Bina Oranlarının Dağılımı : 4-7 Katlılar	building/building_census/story_4_7_v8
23		6.2.15	A-26	Building Ratio Distribution by Story : 8 - 15 Stories	Kat Adedine Göre Bina Oranlarının Dağılımı : 8-15 Katlılar	building/building_census/story_8_15_v8
24		9.3.6		Wooden Building Coverage Area Ratio	Ahşap Binaların Kapladığı Alan Oranı	building/building_census/wooden_building_coverage_ver8
25				Building Ratio Distribution by Structure Wall Structure: Full-Shear Wall	Yapı Türüne Göre Bina Oranlarının Dağılımı, Duvar Yapı : Tamamı Kesme Duvarlı "Tünel Kalıp"	building/building_census/ws_full_shear_wall_v8
26				Building Ratio Distribution by Structure Wall Structure: Prefabric	Yapı Türüne Göre Bina Oranlarının Dağılımı, Duvar Yapı : Prefabrik	building/building_census/ws_prefabric_v8
27				Building Location by Number of Floors	Kat Adetlerine Göre Bina Konumları	building/building_location/floor_point_ver8
28				Distribution of Dense Building Area	Bina Dağılımı	building/building_location/by_500m_grid_by_geology/building_by_500grid
29				Distribution of Dense Building Area (Buildings on Alluvium Soil and Fill)	Alüvyal Zemin ve Dolgu Alanlarındaki Bina Dağılımı	building/building_location/by_500m_grid_by_geology/building_by_500grid_on_alluvium_and_fill
30				Distribution of Dense Building Area (Buildings on Slope Gradient over 20%)	Eğimin % 20'den Yüksek Olduğu Alanlardaki Bina Dağılımı	building/building_location/by_500m_grid_by_slope/building_by_slope_20
31	7.1.1	8.1.11	C-1	Number of Heavily Damaged Building : Model A	Ağır Hasarlı Binaların Sayısı : Model A	damage_estimation/building/damage_a_number_heavy_ver8
32		8.1.9	C-2	Ratio of Heavily Damaged Building : Model A	Ağır Hasarlı Binaların Oranı : Model A	damage_estimation/building/damage_a_ratio_heavy_ver8
33	7.1.2	8.1.12	C-4	Number of Heavily Damaged Building : Model C	Ağır Hasarlı Binaların Sayısı : Model C	damage_estimation/building/damage_c_number_heavy_ver8
34		8.1.10	C-5	Ratio of Heavily Damaged Building : Model C	Ağır Hasarlı Binaların Oranı : Model C	damage_estimation/building/damage_c_ratio_heavy_ver8

List of All GIS Maps compiled in the Study

ID	Figure Number in the Report			Caption		Project File Name in GIS Database System
	Summary	Main Report	GIS Map	English Caption	Turkish Caption	
35	7.2.1	8.2.6	C-7	Number of Dead People : Model A	Ölü Sayısı : Model A	damage_estimation/casualty/casualty_a_number_death_ver8
36	-----	-----		Number of Heavily Injured People : Model A	Ağır Yaralı Sayısı : Model A	damage_estimation/casualty/casualty_a_number_injured_ver8
37	-----	8.2.8		Ratio of Dead People : Model A	Ölü Oranı : Model A	damage_estimation/casualty/casualty_a_ratio_death_ver8
38	7.2.2	8.2.7	C-8	Number of Dead People : Model C	Ölü Sayısı : Model C	damage_estimation/casualty/casualty_c_number_death_ver8
39	-----	-----		Number of Heavily Injured People : Model C	Ağır Yaralı Sayısı : Model C	damage_estimation/casualty/casualty_c_number_injured_ver8
40	-----	8.2.9		Ratio of Dead People : Model C	Ölü Oranı : Model C	damage_estimation/casualty/casualty_c_ratio_death_ver8
41	-----	9.4.13		Electricity Cable Damage length (km) : Model A	Hasarlı Elektrik Hatlarının Uzunluğu (km) : Model A	damage_estimation/electricity/elec_cable_damage_length_a_ver8
42	8.4.5	9.4.14	C-14	Electricity Cable Damage length (km) : Model C	Hasarlı Elektrik Hatlarının Uzunluğu (km) : Model C	damage_estimation/electricity/elec_cable_damage_length_c_ver8
43	-----	-----	D-1	Vulnerability Evaluation : Emergency Operation Issue Population in Heavily Damaged Building	Hasar Görebilirlik Değerlendirmesi : Acil Müdahale Kapsamı - Ağır Hasarlı Binalarda Bulunan Nüfus	damage_estimation/emergency_operation/pop_heavily_building_ver8
44	-----	-----		Vulnerability Evaluation : Emergency Operation Issue Population in Moderately Damaged Building	Hasar Görebilirlik Değerlendirmesi : Acil Müdahale Kapsamı - Orta Hasarlı Binalarda Bulunan Nüfus	damage_estimation/emergency_operation/pop_moderately_building_ver8
45	-----	-----		Vulnerability Evaluation : Emergency Operation Issue Population in Slightly Damaged Building	Hasar Görebilirlik Değerlendirmesi : Acil Müdahale Kapsamı - Az Hasarlı Binalarda Bulunan Nüfus	damage_estimation/emergency_operation/pop_partially_building_ver8
46	-----	-----	D-2	Vulnerability Evaluation : Emergency Operation Issue Total Refugee	Hasar Görebilirlik Değerlendirmesi : Acil Müdahale Kapsamı - Evsiz Kalan Nüfus	damage_estimation/emergency_operation/pop_total_refugee_ver8
47	-----	-----		Vulnerability Evaluation : Emergency Operation Issue Removal Debris on Emergency Road	Hasar Görebilirlik Değerlendirmesi : Acil Müdahale Kapsamı - Acil Ulaşım Yollarında ki Enkazın Kaldırılması	damage_estimation/emergency_operation/removal_debris_on_road_ver8
48	-----	-----	D-3	Vulnerability Evaluation : Emergency Operation Issue Total Removal Debris	Hasar Görebilirlik Değerlendirmesi : Acil Müdahale Kapsamı - Enkazın Kaldırılması	damage_estimation/emergency_operation/weight_removal_debris_ver8
49	8.3.1	9.3.3		Fire Outbreak Possibility : Model A	Yangın Çıkma Olasılığı : Model A	damage_estimation/fire_outbreak/fire_outbreak_possibility_a_ver8
50	8.3.2	9.3.4	C-9	Fire Outbreak Possibility : Model C	Yangın Çıkma Olasılığı : Model C	damage_estimation/fire_outbreak/fire_outbreak_possibility_c_ver8
51	-----	9.4.9		Distribution of Natural Gas Service Box Damage : Model A	Doğal Gaz Servis Kutuları Hasar Dağılımı : Model A	damage_estimation/gas/gas_box_damage_a_ver8
52	8.4.4	9.4.10	C-13	Distribution of Natural Gas Service Box Damage : Model C	Doğal Gaz Servis Kutuları Hasar Dağılımı : Model C	damage_estimation/gas/gas_box_damage_c_ver8
53	-----	9.4.7		Distribution of Natural Gas Pipe Damage : Model A	Doğal Gaz Boru Hatları Hasar Dağılımı : Model A	damage_estimation/gas/gas_pipe_damage_a_ver8
54	8.4.3	9.4.8	C-12	Distribution of Natural Gas Pipe Damage : Model C	Doğal Gaz Boru Hatları Hasar Dağılımı : Model C	damage_estimation/gas/gas_pipe_damage_c_ver8
55	-----	8.1.13	C-3	Seismic Intensity : Model A	Sismik Şiddet : Model A	damage_estimation/intensity/intensity_a_ver8
56	-----	8.1.14	C-6	Seismic Intensity : Model C	Sismik Şiddet : Model C	damage_estimation/intensity/intensity_c_ver8
57	8.6.3	9.6.34	D-9	Isolation Risk Caused by Road Blockage	Yolların Kapanması Sonucu Ulaşamayacak Alanlar	damage_estimation/road_blockage/isolation_risk_model_c
58	-----	9.6.32		Road Blockage Caused by Building Collaption: Medium Width (7-15m) Road	Yol Kapanma Analizi (Çöken Binalarla) : Orta Genişlikteki Yollar (7-15m)	damage_estimation/road_blockage/road_blockage_model_c_medium_road
59	-----	9.6.31		Road Blockage Caused by Building Collaption: Narrow (2-6m) Road	Yol Kapanma Analizi (Çöken Binalarla) : Dar Yollar (2-6m)	damage_estimation/road_blockage/road_blockage_model_c_narrow_road
60	-----	9.6.33		Road Blockage Caused by Building Collaption: Wide (16m and Over) Road	Yol Kapanma Analizi (Çöken Binalarla) : Geniş Yollar (16m ve üstü)	damage_estimation/road_blockage/road_blockage_model_c_wide_road
61	-----	9.4.4		Distribution of Sewage Pipe Damage : Model A	Kanalizasyon Boru Hatları Hasar Dağılımı : Model A	damage_estimation/sewage/swage_pipe_damage_a_ver8
62	8.4.2	9.4.5	C-11	Distribution of Sewage Pipe Damage : Model C	Kanalizasyon Boru Hatları Hasar Dağılımı : Model C	damage_estimation/sewage/swage_pipe_damage_c_ver8
63	8.4.6	9.4.15	C-15	Distribution of Telecommunication Fiber Optic Cable	Telekom Fiber Optik Kablo Hatları	damage_estimation/telecom/telecom_fiber_cable
64	-----	-----		Necessary Public Open Space for Primary Evacuation Area Case: Narrow Road Area without Park in Conservation Area	Birinci Derece Tahliye Alanları için Gerekli Halka Açık Alanlar Durum : Sit Alanı İçinde Bulunan ve Etrafında Park Olmayan Dar Yollar	damage_estimation/virtual_image/narrow_road_area/open_space_narrow_road_ver8

List of All GIS Maps compiled in the Study

ID	Figure Number in the Report			Caption		Project File Name in GIS Database System
	Summary	Main Report	GIS Map	English Caption	Turkish Caption	
65				Virtual Demonstration of Road Blockage by Building Damage Case : Heavy Damage in Narrow Road Area in Conservation Area	Bina Hasarlarından Kaynaklanan Olası Yol Kapanmalarının Gösterimi Durum : Site Alanı İçindeki Dar Yollarda Meydana Gelen Ağır Hasar	damage_estimation/virtual_image/narrow_road_area/road_blockage_narrow_road_heavy_ver8
66				Virtual Demonstration of Road Blockage by Building Damage Case : Moderate Damage in Narrow Road Area in Conservation Area	Bina Hasarlarından Kaynaklanan Olası Yol Kapanmalarının Gösterimi Durum : Site Alanı İçindeki Dar Yollarda Meydana Gelen Orta Hasar	damage_estimation/virtual_image/narrow_road_area/road_blockage_narrow_road_moderate_ver8
67				Necessary Public Open Space for Primary Evacuation Area Case : Well Planned Area with Large Scale Park	Birinci Derece Tahliye Alanları için Gerekli Halka Açık Alanlar Durum : Büyük Ölçekli Parkı Olan Düzenli Yapılmış Alanlar	damage_estimation/virtual_image/planned_area/open_space_planned_area_ver8
68				Virtual Demonstration of Road Blockage by Building Damage Case : Heavy Damage in Well Planned Area	Bina Hasarlarından Kaynaklanan Olası Yol Kapanmalarının Gösterimi Durum : Düzenli Yapılmış Alanlardaki Ağır Hasar	damage_estimation/virtual_image/planned_area/selected_area/road_blockage_planned_area_heavy_ver8
69				Virtual Demonstration of Road Blockage by Building Damage Case : Moderate Damage in Well Planned Area	Bina Hasarlarından Kaynaklanan Olası Yol Kapanmalarının Gösterimi Durum : Düzenli Yapılmış Alanlardaki Orta Hasar	damage_estimation/virtual_image/planned_area/selected_area/road_blockage_planned_area_moderate_ver8
70		9.4.2		Distribution of Water Pipe Damage : Model A	İçme Suyu Boru Hatları Hasar Dağılımı : Model A	damage_estimation/water/water_pipe_damage_a_ver8
71	8.4.1	9.4.3	C-10	Distribution of Water Pipe Damage : Model C	İçme Suyu Boru Hatları Hasar Dağılımı : Model C	damage_estimation/water/water_pipe_damage_c_ver8
72	6.2.1		B-3	Ground Classification Map	Zemin Sınıflandırma Haritası	earthquake_estimation/ground_classification/ground_classification_v8
73		7.3.8		Liquefaction Potential Area	Potansiyel Sıvılaşma Alanı	earthquake_estimation/liquefaction_potential/liquefaction_analysis_area_v8
74		7.3.9	B-16	Distribution of Liquefaction Potential : Model A	Sıvılaşma Potansiyelinin Dağılımı : Model A	earthquake_estimation/liquefaction_potential/liquefaction_potential_a_v8
75	6.3.3	7.3.10	B-17	Distribution of Liquefaction Potential : Model C	Sıvılaşma Potansiyelinin Dağılımı : Model C	earthquake_estimation/liquefaction_potential/liquefaction_potential_c_v8
76			B-4	Distribution of Acceleration at Bedrock : Model A	Kayazeminde İvme Dağılımı : Model A	earthquake_estimation/pga_pgv_sa/motion_a_bedrock_ga_ver8
77			B-5	Distribution of Velocity at Bedrock : Model A	Kayazeminde Hız Dağılımı : Model A	earthquake_estimation/pga_pgv_sa/motion_a_bedrock_gv_ver8
78	6.2.2	7.2.5	B-6	Distribution of Peak Ground Acceleration : Model A	En Yüksek Zemin İvmesi Dağılımı : Model A	earthquake_estimation/pga_pgv_sa/motion_a_pga_ver8
79		7.2.9	B-7	Distribution of Peak Ground Velocity : Model A	En Yüksek Zemin Hızı Dağılımı : Model A	earthquake_estimation/pga_pgv_sa/motion_a_pgv_ver8
80		7.2.12	B-8	Distribution of Acceleration Response Spectrum (0.2 sec) : Model A	İvme Tepki Spektrumu (0.2 sn.) Dağılımı : Model A	earthquake_estimation/pga_pgv_sa/motion_a_sa02_ver8
81		7.2.13	B-9	Distribution of Acceleration Response Spectrum (1.0 sec) : Model A	İvme Tepki Spektrumu (1.0 sn.) Dağılımı : Model A	earthquake_estimation/pga_pgv_sa/motion_a_sa10_ver8
82				Distribution of Acceleration at Bedrock : Model B	Kayazeminde İvme Dağılımı : Model B	earthquake_estimation/pga_pgv_sa/motion_b_bedrock_ga_ver8
83				Distribution of Velocity at Bedrock : Model B	Kayazeminde Hız Dağılımı : Model B	earthquake_estimation/pga_pgv_sa/motion_b_bedrock_gv_ver8
84	6.2.3	7.2.6		Distribution of Peak Ground Acceleration : Model B	En Yüksek Zemin İvmesi Dağılımı : Model B	earthquake_estimation/pga_pgv_sa/motion_b_pga_ver8
85		7.2.10		Distribution of Peak Ground Velocity : Model B	En Yüksek Zemin Hızı Dağılımı : Model B	earthquake_estimation/pga_pgv_sa/motion_b_pgv_ver8
86		7.2.14		Distribution of Acceleration Response Spectrum (0.2 sec) : Model B	İvme Tepki Spektrumu (0.2 sn.) Dağılımı : Model B	earthquake_estimation/pga_pgv_sa/motion_b_sa02_ver8
87		7.2.15		Distribution of Acceleration Response Spectrum (1.0 sec) : Model B	İvme Tepki Spektrumu (1.0 sn.) Dağılımı : Model B	earthquake_estimation/pga_pgv_sa/motion_b_sa10_ver8
88			B-10	Distribution of Acceleration at Bedrock : Model C	Kayazeminde İvme Dağılımı : Model C	earthquake_estimation/pga_pgv_sa/motion_c_bedrock_ga_ver8
89			B-11	Distribution of Velocity at Bedrock : Model C	Kayazeminde Hız Dağılımı : Model C	earthquake_estimation/pga_pgv_sa/motion_c_bedrock_gv_ver8
90	6.2.4	7.2.7	B-12	Distribution of Peak Ground Acceleration : Model C	En Yüksek Zemin İvmesi Dağılımı : Model C	earthquake_estimation/pga_pgv_sa/motion_c_pga_ver8
91		7.2.11	B-13	Distribution of Peak Ground Velocity : Model C	En Yüksek Zemin Hızı Dağılımı : Model C	earthquake_estimation/pga_pgv_sa/motion_c_pgv_ver8
92		7.2.16	B-14	Distribution of Acceleration Response Spectrum (0.2 sec) : Model C	İvme Tepki Spektrumu (0.2 sn.) Dağılımı : Model C	earthquake_estimation/pga_pgv_sa/motion_c_sa02_ver8
93		7.2.17	B-15	Distribution of Acceleration Response Spectrum (1.0 sec) : Model C	İvme Tepki Spektrumu (1.0 sn.) Dağılımı : Model C	earthquake_estimation/pga_pgv_sa/motion_c_sa10_ver8
94				Distribution of Acceleration at Bedrock : Model D	Kayazeminde İvme Dağılımı : Model D	earthquake_estimation/pga_pgv_sa/motion_d_bedrock_ga_ver8
95				Distribution of Velocity at Bedrock : Model D	Kayazeminde Hız Dağılımı : Model D	earthquake_estimation/pga_pgv_sa/motion_d_bedrock_gv_ver8

List of All GIS Maps compiled in the Study

ID	Figure Number in the Report			Caption		Project File Name in GIS Database System
	Summary	Main Report	GIS Map	English Caption	Turkish Caption	
96	6.2.5	7.2.8		Distribution of Peak Ground Acceleration : Model D	En Yüksek Zemin İvmesi Dağılımı : Model D	earthquake_estimation/pgv_pg/sa/motion_d_pga_ver8
97	-----	-----		Distribution of Peak Ground Velocity : Model D	En Yüksek Zemin Hızı Dağılımı : Model D	earthquake_estimation/pgv_pg/sa/motion_d_pg_ver8
98	-----	7.2.18		Distribution of Acceleration Response Spectrum (0.2 sec) : Model D	İvme Tepki Spektrumu (0.2 sn.) Dağılımı : Model D	earthquake_estimation/pgv_pg/sa/motion_d_sa02_ver8
99	-----	7.2.19		Distribution of Acceleration Response Spectrum (1.0 sec) : Model D	İvme Tepki Spektrumu (1.0 sn.) Dağılımı : Model D	earthquake_estimation/pgv_pg/sa/motion_d_sa10_ver8
100	-----	-----		Distribution of Peak Ground Acceleration : Model İzmit	En Yüksek Zemin İvmesi Dağılımı : İzmit Modeli	earthquake_estimation/pgv_pg/sa/motion_k_pga_ver8
101	-----	-----		Distribution of Peak Ground Velocity : Model İzmit	En Yüksek Zemin Hızı Dağılımı : İzmit Modeli	earthquake_estimation/pgv_pg/sa/motion_k_pg_ver8
102	-----	-----		Distribution of Acceleration Response Spectrum (0.2 sec) : Model İzmit	İvme Tepki Spektrumu (0.2 sn.) Dağılımı : İzmit Modeli	earthquake_estimation/pgv_pg/sa/motion_k_sa02_ver8
103	-----	-----		Distribution of Acceleration Response Spectrum (1.0 sec) : Model İzmit	İvme Tepki Spektrumu (1.0 sn.) Dağılımı : İzmit Modeli	earthquake_estimation/pgv_pg/sa/motion_k_sa10_ver8
104	-----	7.4.3	B-18	Risk for Slope Stability : Model A	Eğim Stabilite Riski : Model A	earthquake_estimation/slope_stability/slope_stability_a_ver8
105	-----	7.4.4	B-19	Risk for Slope Stability : Model C	Eğim Stabilite Riski : Model C	earthquake_estimation/slope_stability/slope_stability_c_ver8
106	-----	6.1.8	B-2	Location Map of Geological Survey	Jeolojik Etüd Lokasyon Haritası	geology/boring_location/survey_v8
107	-----	-----		Location Map of Boring Data Available in IMM	Sondaj Verileri Lokasyon Haritası; IBB	geology/boring_location/existing_survey_location/boring_location_ibt_ver8
108	-----	-----	B-1	Location Map of Existing Ground Survey	Mevcut Zemin Etüdü Lokasyon Haritası	geology/boring_location/existing_survey_location/ground_survey_v8
109	-----	6.1.6	A-5	Geological Map : IMM, 1:5.000	Jeoloji Haritası : IBB, 1:5.000	geology/geological_map_5000/geology_5000_ver8
110	-----	7.3.4		Distribution of Man Made Ground and Quaternary Deposit		geology/geological_map_5000/man_made_ground_and_quaternary_ver8
111	-----	6.1.5		Geological Map : Master Plan 1:50,000	Jeoloji Haritası : Master Plan 1:50,000	geology/geological_map_master_plan/geology_v8
112	-----	6.1.7		Geological Map : MTA, 1:25.000	Jeoloji Haritası : MTA, 1:25.000	geology/geological_map_mta/geology_mta_ver8
113	-----	6.2.40		Number of Hazardous Facilities by District	İlçelere Göre Toplam Yanıcı-Parlayıcı Madde İşletmelerinin Sayısı	hazardous_facility/hazardous_facility/hazardous_facility_by_district_ver8
114	-----	-----	A-44	Number of Hazardous Facility by Mahalle : Factories	Mahallelere Göre Toplam Yanıcı-Parlayıcı Madde İşletmelerinin Sayısı : Fabrikalar	hazardous_facility/hazardous_facility/hazardous_facility_by_mahalle_factories
115	-----	-----	A-43	Number of Hazardous Facility by Mahalle : LPG and Oil Stations	Mahallelere Göre Toplam Yanıcı-Parlayıcı Madde İşletmelerinin Sayısı : LPG ve Benzin İstasyonları	hazardous_facility/hazardous_facility/hazardous_facility_by_mahalle_lpg_oil_stations
116	-----	-----		Number of Hazardous Facility by Mahalle : Whole Facilities	Mahallelere Göre Toplam Yanıcı-Parlayıcı Madde İşletmelerinin Sayısı . Tüm İşletmeler	hazardous_facility/hazardous_facility/total_hazardous_facility_by_mahalle
117	-----	-----		Large Scale Conservation Area (Designated by Conservation Board)	Sit Alanları (Büyük Ölçekli)	landuse/conservation_area/conservation_area_ver8
118	-----	10.2.1	A-11	Conservation Area (Designated by Conservation Board)	Sit Alanlar	landuse/conservation_area/conservation_area_by_category_ver8
119	-----	-----		Cultural Heritage Concentrated Areas within the Historical Peninsula (Not Yet Approved)	Tarihi Yarımada daki Kültür Varlığı Yoğun Alanlar (Henüz Onaylanmamış)	landuse/conservation_area/historical_peninsula_plan_ver8
120	-----	10.2.2		Cultural Heritage Concentrated Areas within the Historical Peninsula (Not Yet Approved)	Tarihi Yarımada daki Kültür Varlığı Yoğun Alanlar (Henüz Onaylanmamış)	landuse/conservation_area/historical_peninsula_plan_and_vulnerability_ver8
121	-----	-----	A-10	Existing Landuse	Mevcut Arazi Kullanımı	landuse/existing_landuse/landuse_2000_ver8
122	-----	-----		Master Plan Proposed by IMM in 1995	1995 Yılında IBB Tarafından Önerilen Master Plan	landuse/master_plan_1995/master_plan_V8
123	-----	-----		Large Scale Mining Area	Maden Alanları (Büyük Ölçekli)	landuse/mining_area/mining_area_ver8
124	-----	-----		Gecekondu Area	Gecekondu Alanları	landuse/redevelopment_plan/redevelopment_plan_ver8
125	-----	-----	A-9	Urban Expansion	Kentsel Gelişim	landuse/urban_expansion/urban_expansion_ver8
126	-----	6.2.9	A-38	High Voltage Electricity Line Network	Yüksek Gerilim Elektrik Hatları	lifeline/electricity/high_voltage_v8

List of All GIS Maps compiled in the Study

ID	Figure Number in the Report			Caption		Project File Name in GIS Database System
	Summary	Main Report	GIS Map	English Caption	Turkish Caption	
127	-----	6.2.26	A-37	Natural Gas Pipelines Network	Doğal Gaz Şebekesi	lifeline/gas/gas_v8
128	-----	-----		Turkcell Base Stations by Mahalle and Facility	Mahallere İere Göre Turkcell Baz İstasyonları ve Tesisleri	lifeline/mobile_phone/mobil_phone_v8
129	-----	6.2.30	A-39	Telecom Fiber Optic Lines Network	Telekom Fiber Optik Kablo Ağı	lifeline/telecom/telecom_ver8
130	-----	6.2.28	A-36	Sewage Pipelines Network	Kanalizasyon Şebekesi	lifeline/waste_water/waste_water_v8
131	-----	6.2.27	A-35	Water Supply Pipelines Network	İçme Suyu Dağıtım Şebekesi	lifeline/water_supply/water_v8
132	-----	6.2.2	A-13	Population Density by Mahalle	Mahallelere Göre Nüfus Yoğunluğu	population/population/population_density_v8
133	-----	6.2.1	A-12	Population by Mahalle	Mahallelere Göre Nüfus	population/population/population_v8
134	-----	-----		Active Park Distribution	Aktif Parkların Dağılımı	public_facility/active_parks/active_park_v8
135	-----	-----	A-33	Active Parks by Mahalle (Area >= 25000m2)	Mahallelere Göre Aktif Parklar (Alan >= 25000m2)	public_facility/active_parks/by_mahalle/active_park_by_mahalle_ver8
136	-----	-----	A-34	Active Parks by Mahalle (500 <= Area < 25000 m2)	Mahallelere Göre Aktif Parklar (500 <= Alan < 25000 m2)	public_facility/active_parks/by_mahalle/active_park_by_mahalle_area_500_ver8
137	-----	6.2.39	A-31	Number of Governmental Facilities by District and Location of Municipality and Kaymakamlık	İlçelere Göre Resmi Binaların Sayısı ve Belediye ile Kaymakamlıkların Yerleri	public_facility/belediye_kaimakamlık/number_governmental_facility_by_district_ver8
138	-----	6.2.31	A-28	Number of Primary and High School by District	İlçelere Göre İlköğretim Okulları ve Liselerin Sayıları	public_facility/educational/number_of_school_ver8
139	-----	-----		Primary and High School: Planned Temporary Housing Area per Refugee	İlköğretim Okulları ve Liseler : Evsiz Kalan Nüfus için Planlanan İskan Alanı	public_facility/educational/planned_temp_housing_per_refugee_ver8
140	-----	6.2.32		Population per Primary and High School by District	İlçelere Göre İlköğretim Okulları ve Liselerdeki Nüfus	public_facility/educational/population_per_school_ver8
141	-----	6.2.33		Primary and High School : Area of School Building planned as Temporary Housing (m2/population)	İlköğretim Okulları ve Liseler : Geçici İskan için Planlanan Okul Bina Alanı (m2/nüfus)	public_facility/educational/school_for_temp_housing_ver8
142	-----	6.2.37	A-29	Location of Fire Brigade	İtfaiye Birimleri	public_facility/fire_brigade/fire_brigade_ver8
143	-----	-----	D-4	Medical Facility : Number of Bed per 100 Heavily Injured People in Model C	Sağlık Tesisi : Ağır Yaralı 100 kişiye düşen Yatak Sayısı ; Model C	public_facility/medical/number_of_bed_per_100_injured_ver8
144	-----	6.2.36		Medical Facility : Number of Bed per 100.000 People by District	Sağlık Tesisi : İlçelere Göre 100.000 Kişiyeye Düşen Yatak Sayısı	public_facility/medical/number_of_bed_per_100000_ver8
145	-----	6.2.35		Medical Facility : Number of Bed by District	Sağlık Tesisi : İlçelere Göre Yatak Sayısı	public_facility/medical/number_of_bed_ver8
146	-----	6.2.34	A-30	Medical Facility : Number of Hospital and Policlinic by District	Sağlık Tesisi : İlçelere Göre Hastane ve Poliklinik Sayısı	public_facility/medical/number_of_hospital_ver8
147	-----	6.2.38	A-32	Number of Security Facilities by District and Location of District Police (İlçe Emniyet)	İlçelere Göre Emniyet Birimlerinin Sayısı ve İlçe Emniyet Müdürlüklerinin Yerleri	public_facility/security/number_security_facility_by_district_ver8
148	-----	6.1.16	A-8	Damaged Building Ratio in Istanbul at 1999 Kocaeli Earthquake	1999 Kocaeli Depreminde İstanbul'daki Hasarlı Bina Oranı	seismology/building_damage_of_1999_eq/building_damage_v8
149	-----	-----		Epicentral Distribution of Earthquakes, M>=5, 1905 - 2001	Depremlerin Merkez Üsleri Dağılımı , M>=5, 1905 - 2001	seismology/earthquake_epicenter/eq_1905_2001_more_than_5_v8
150	-----	6.1.12	A-7	Epicentral Distribution of Earthquakes, 1905 - 2001	Depremlerin Merkez Üsleri Dağılımı, 1905 - 2001	seismology/earthquake_epicenter/eq_1905_2001_ver8
151	-----	-----	A-6	Epicentral Distribution of Historical Earthquakes	Tarihte Meydana Gelmiş Depremlerin Merkez Üsleri Dağılımı	seismology/earthquake_epicenter/eq_historical_v8
152	-----	-----		Location Map of Strong Motion Seismograph	Kuvvetli Hareket Sismograflarının Lokasyon Haritası	seismology/seismic_station/station_geology_5000_v8
153	-----	-----		Bathymetry and Fault in Marmara Sea	Marmara Denizindeki Fay Hatları ve Batimetri	topography/bathimetry/bathymetry_v8
154	-----	-----		Bathymetry Points of Data Source (MTA)	MTA Verilerine Göre Batimetri Noktaları	topography/bathimetry/batimetry_points_v8
155	-----	6.1.3	A-3	Elevation	Yükseklik	topography/elevation/elevation_v8
156	-----	6.1.4	A-4	Slope	Eğim	topography/slope/slope_v8
157	-----	-----		Distribution of High Gradient (Gradient > 10%)	Yüksek Eğimli Alanların Dağılımı (Eğim > % 10)	topography/slope/by_mahalle/slope_by_mahalle_10_ver8
158	-----	-----		Distribution of High Gradient (Gradient > 30%)	Yüksek Eğimli Alanların Dağılımı (Eğim > % 30)	topography/slope/by_mahalle/slope_by_mahalle_30_ver8

List of All GIS Maps compiled in the Study

ID	Figure Number in the Report			Caption		Project File Name in GIS Database System
	Summary	Main Report	GIS Map	English Caption	Turkish Caption	
159	-----	-----		Airports	Havaalanları	transportation/airport/airport_ver8
160	-----	-----	C-16	Damage Possibility of Bridge	Köprü Hasar Olasılığı	transportation/bridge/bridge_damage_possibility_ver8
161	-----	6.2.23	A-42	Bridge Location	Köprü Lokasyon	transportation/bridge/bridge_location_ver8
162	-----	9.6.27		Bridge with High Damage Potential : Priority for Road Network	Hasar Görme Olasılığı Yüksek Köprü: Yol Ağı İçin Öncelik	transportation/bridge/bridge_priority_for_network_ver8
163	-----	9.6.28	D-11	Bridge with High Damage Potential : Reinforcement Priority Based on Damage Possibility and Priority for Road Network	Hasar Görme Olasılığı Yüksek Köprü: Hasar Görme Olasılığına ve Öncelikli Yol Ağına Göre Güçlendirme Öncelikleri	transportation/bridge/bridge_reinforcement_ver8
164	-----	-----	A-40	Existing Road Network by Road Function	Fonksiyonlarına Göre Mevcut Yol Ağı	transportation/road/road_degree_v8
165	-----	-----		Road Width of Other Road	Diğer Yolların Genişliği	transportation/road/road_other_by_width_ver8
166	-----	9.6.2		Road Width of 1st Degree Road	Birinci Derece Yolların Genişliği	transportation/road/road_type1_by_width_ver8
167	-----	9.6.3		Road Width of 2nd Degree Road	İkinci Derece Yolların Genişliği	transportation/road/road_type2_by_width_ver8
168	-----	9.6.4		Road Width of Collector Road	Kentiçi Toplayıcı Yolların Genişliği	transportation/road/road_type3_by_width_ver8
169	-----	6.2.21		Existing Road Network by Road Width (2 - 6 m)	Yol Genişliğine Göre Mevcut Yol Ağı (2 - 6m)	transportation/road/road_width_02_06_ver8
170	-----	6.2.20		Existing Road Network by Road Width (7 - 15 m)	Yol Genişliğine Göre Mevcut Yol Ağı (7 - 15m)	transportation/road/road_width_07_15_ver8
171	-----	6.2.19		Existing Road Network by Road Width (16 m and Over)	Yol Genişliğine Göre Mevcut Yol Ağı (16m ve Daha)	transportation/road/road_width_16_x_ver8
172	-----	6.2.18		Existing Road Network by Road Width	Yol Genişliğine Göre Mevcut Yol Ağı	transportation/road/road_width_v8
173	-----	-----		Total Length of 16m-and-More-Width Road by 500m Grid	Gridlere (Birim Hücre) Göre 16m ve Daha Geniş Yolların Toplam Uzunluğu	transportation/road/by_500m_grid_by_slope/length_16_x_ver8
174	-----	-----		Distribution of Dense Road Area (Width Category : 2-6m , Slope Gradient over 20%)	Yol Uzunluklarının Yoğunluk Dağılımı (Genişlik : 2-6m , Eğim % 20'den fazla)	transportation/road/by_500m_grid_by_slope/length_2_6_slope_20_x_ver8
175	-----	-----		Road Length by Grid (Width : 2-6m, Slope > 30%)	Gridlere (Birim Hücre) Göre Yol Uzunluğu (Genişlik : 2-6m, Eğim > %30)	transportation/road/by_500m_grid_by_slope/length_2_6_slope_30_x_ver8
176	-----	-----		Distribution of Dense Road Area (Width Category : 2-6m)	Yol Uzunluklarının Yoğunluk Dağılımı (Genişlik : 2-6m)	transportation/road/by_500m_grid_by_slope/length_2_6_ver8
177	-----	-----		Road Length by Grid (Width : 7-15m, Slope > 20%)	Gridlere (Birim Hücre) Göre Yol Uzunluğu (Genişlik : 7-15m, Eğim > %20)	transportation/road/by_500m_grid_by_slope/length_7_15_slope_20_x_ver8
178	-----	-----		Road Length by Grid (Width : 7-15m, Slope > 30%)	Gridlere (Birim Hücre) Göre Yol Uzunluğu (Genişlik : 7-15m, Eğim > %30)	transportation/road/by_500m_grid_by_slope/length_7_15_slope_30_x_ver8
179	-----	-----		Distribution of Dense Road Area (Width Category : 7-15m)	Yol Uzunluklarının Yoğunluk Dağılımı (Genişlik : 7-15m)	transportation/road/by_500m_grid_by_slope/length_7_15_ver8
180	-----	-----		Road Length by Grid	Gridlere (Birim Hücre) Göre Yol Uzunluğu	transportation/road/by_500m_grid_by_slope/length_all_ver8
181	-----	-----		Road Length Difference : Length of Medium (7-15m) Road - "Length of Narrow (2-6m) Road"	Yol Uzunluğu Farkı : "Orta Genişlikteki (7-15m) Yolların Uzunluğu" - "Dar (2-6m) Yolların Uzunluğu"	transportation/road/by_500m_grid_by_slope/length_differences_(7_15)-(2-6)_ver8
182	-----	-----		Density of 2nd Degree Road by Mahalle	Mahallelere Göre İkinci Derece Yolların Yoğunluğu	transportation/road/by_mahalle/2nd_degree_road_density_by_mahalle_ver8
183	-----	-----		Density of Collector Road by Mahalle	Mahallelere Göre Kentiçi Toplayıcı Yolların Yoğunluğu	transportation/road/by_mahalle/collector_road_density_by_mahalle_ver8
184	-----	-----		Road Area Ratio	Yol Alan Oranı	transportation/road/by_mahalle/road_area_ratio
185	-----	6.2.22		Road Density by Mahalle	Mahallelere Göre Yol Yoğunluğu	transportation/road/by_mahalle/road_density_by_mahalle_ver8
186	-----	-----		Ratio of Narrow Road Length by Mahalle (Width <= 6m)	Mahallelere Göre Dar Yolların Uzunluk Oranı (Genişlik <= 6m)	transportation/road/by_mahalle/road_length_by_width_by_mahalle_v8
187	-----	-----	A-41	Road Length (m/ha)	Yol Yoğunluğu (m/ha)	transportation/road/by_mahalle/road_length_summarized_by_mahalle_ten_ha_v8

List of All GIS Maps compiled in the Study

ID	Figure Number in the Report			Caption		Project File Name in GIS Database System
	Summary	Main Report	GIS Map	English Caption	Turkish Caption	
188	-----	-----		Road Length (m/ha), Width : 7-15m	Yol Yoğunluğu (m/ha), Genişlik : 7-15m	transportation/road/by_mahalle/road_length_summarized_by_mahalle_w_7_15_h_a_v8
189	-----	-----		Road Length (m/pop), Width : 7-15m	Yol Yoğunluğu (m/nüfus), Genişlik : 7-15m	transportation/road/by_mahalle/road_length_summarized_by_mahalle_w_7_15_pop_v8
190	-----	-----		Road Length (m/ha), Type : 2nd Degree Road	Yol Yoğunluğu (m/ha), Tip : 2. Derece Yol	transportation/road/by_mahalle/road_length_summarized_by_mahalle_w_t2_ha_v8
191	-----	-----	D-10	Facilities for Primary, Secondary and Tertiary Emergency Road Study	Birinci, İkinci ve Üçüncü Acil Ulaşım Yollarıyla Bağlanacak Tesislere Ait Çalışma	transportation/road/emergency_road_network_proposed_by_jica/all_facilities_for_emergency_roads_ver8
192	-----	-----		Facilities for Primary Emergency Road Study	Birinci Derece Acil Ulaşım Yollarıyla Bağlanacak Tesislere Ait Çalışma	transportation/road/emergency_road_network_proposed_by_jica/all_facilities_for_primary_emergency_roads_ver8
193	-----	10.6.1	D-12	Proposed Emergency Road Network	Önerilen Acil Yol Ağı	transportation/road/emergency_road_network_proposed_by_jica/emergency_road_network_proposed_by_jica_ver8
194	-----	9.7.1		Ports for Primary and Secondary Emergency Road Study	Birinci ve İkinci Derece Acil Ulaşım Yollarıyla Bağlanacak Limanlara Ait Çalışma	transportation/road/emergency_road_network_proposed_by_jica/ports_for_emergency_road_proposal_ver8
195	-----	9.6.11		Road Scoring : Route Characteristic : Building Collapse Risk	Yol Derecelendirmesi : Güzergah Karakteristiği : Bina Yıkılma Riski	transportation/road/road_scoring/building_collapse_risk_ver8
196	-----	9.6.7		Road Scoring : Factor on Disaster Prevention : Connection	Yol Derecelendirmesi : Afet Önleme Faktörü ; Bağlantılar	transportation/road/road_scoring/connection_ver8
197	-----	9.6.12		Road Scoring : Crossing (Large Bridges and Viaducts)	Yol Derecelendirmesi : Ana Geçitler (Büyük Köprüler ve Viadükler)	transportation/road/road_scoring/crossing_ver8
198	-----	9.6.9		Road Scoring : Traffic Characteristic : Direction	Yol Derecelendirmesi : Trafik Karakteristiği ; Yön	transportation/road/road_scoring/direction_ver8
199	-----	9.6.10		Road Scoring : Route Characteristic : Land Use	Yol Derecelendirmesi : Güzergah Karakteristiği ; Arazi Kullanımı	transportation/road/road_scoring/land_use_ver8
200	-----	9.6.17		Road Network and Nodes for Shortest Path Analysis	En Kısa Yol Analizinde Kullanılan Yol Ağı ve Bağlantı Noktaları	transportation/road/road_scoring/network_and_node_ver8
201	-----	9.6.6		Road Scoring : Disaster Prevention : Route Division	Yol Derecelendirmesi : Afet Önleme ; Yolların Ayırımı	transportation/road/road_scoring/route_division_ver8
202	-----	9.6.14		Road Priority Based on Road Attribute	Özelliklerine Göre Yol Önceliği	transportation/road/road_scoring/score_by_attribute_ver8
203	-----	9.6.24		Road Priority Based on Shortest Path Analysis for Disaster Management Related Facilities	Afet Yönetimi Kapsamındaki Tesisler için Yapılan En Kısa Yol Analizlerine Göre Yol Öncelikleri	transportation/road/road_scoring/score_by_shortest_path_ver8
204	-----	-----		Road Priority : Conclusion	Yol Öncelikleri : Sonuç	transportation/road/road_scoring/score_conclusion_ver8
205	-----	9.6.20		Road Scoring : Evaluation Based on Shortest Path Analysis for Primary Facilities	Yol Derecelendirmesi : Birinci Derece Tesisler Kapsamında Yapılan En Kısa Yol Analizine Göre Değerlendirme	transportation/road/road_scoring/shortest_path_1st_ver8
206	-----	9.6.18		Primary Emergency Network Shortest Path Analysis Case A : Without Damage	Birinci Derece Acil Yol Ağında En Kısa Yol Analizi; A Durumu : Hasarsız	transportation/road/road_scoring/shortest_path_1st_case_a_ver8
207	-----	9.6.19		Primary Emergency Network Shortest Path Analysis Case B : Damage on 2 Bridges	Birinci Derece Acil Yol Ağında En Kısa Yol Analizi; B Durumu : 2 Köprüde Hasar Halinde	transportation/road/road_scoring/shortest_path_1st_case_b_ver8
208	-----	9.6.23		Road Scoring : Evaluation Based on Shortest Path Analysis for Primary, Secondary and Tertiary Facilities	Yol Derecelendirmesi : Birinci, İkinci ve Üçüncü Derece Tesisler Kapsamında Yapılan En Kısa Yola Analizine Göre Değerlendirme	transportation/road/road_scoring/shortest_path_1to3rd_ver8
209	-----	9.6.21		Primary, Secondary and Tertiary Emergency Network Shortest Path Analysis Case A : Without Damage	Birinci, İkinci ve Üçüncü Derece Acil Yol Ağında En Kısa Yol Analizi; A Durumu : Hasarsız	transportation/road/road_scoring/shortest_path_1to3rd_case_a_ver8
210	-----	9.6.22		Primary, Secondary and Tertiary Emergency Network Shortest Path Analysis Case B: Damage on 2 Bridges	Birinci, İkinci ve Üçüncü Derece Acil Yol Ağında En Kısa Yol Analizi; B Durumu : 2 Köprüde Hasar Halinde	transportation/road/road_scoring/shortest_path_1to3rd_case_b_ver8

List of All GIS Maps compiled in the Study

ID	Figure Number in the Report			Caption		Project File Name in GIS Database System
	Summary	Main Report	GIS Map	English Caption	Turkish Caption	
211	-----	-----		Road Scoring : Traffic Characteristic : Volume Type	Yol Derecelendirmesi : Trafik Karakteristiği ; Yoğunluk Tipi	transportation/road/road_scoring/volume_type_ver8
212	-----	-----		Primary Emergency Network Shortest Path Analysis Case A : Without Damage	Birinci Derece Acil Yol Ağında En Kısa Yol Analizi; A Durumu : Hasarsız	transportation/road/road_scoring/case_a_without_damage/route_for_1st_case_a_ver8
213	-----	-----		Primary, Secondary and Tertiary Emergency Network Shortest Path Analysis Case A : Without Damage	Birinci, İkinci ve Üçüncü Derece Acil Yol Ağında En Kısa Yol Analizi; A Durumu : Hasarsız	transportation/road/road_scoring/case_a_without_damage/route_for_1to3rd_case_a_ver8
214	-----	-----		Primary Emergency Network Shortest Path Analysis Case B : Damage on 2 Bridges	Birinci Derece Acil Yol Ağında En Kısa Yol Analizi; B Durumu : 2 Köprüde Hasar Halinde	transportation/road/road_scoring/case_b_2_bridges_damage/route_for_1st_case_b_ver8
215	-----	-----		Primary, Secondary and Tertiary Emergency Network Shortest Path Analysis Case B: Damage on 2 Bridges	Birinci, İkinci ve Üçüncü Derece Acil Yol Ağında En Kısa Yol Analizi; B Durumu : 2 Köprüde Hasar Halinde	transportation/road/road_scoring/case_b_2_bridges_damage/route_for_1to3rd_case_b_ver8
216	-----	9.6.16		Facilities for Primary, Secondary and Tertiary Emergency Road Study	Birinci, İkinci ve Üçüncü Acil Ulaşım Yollarıyla Bağlanacak Tesislere Ait Çalışma	transportation/road/road_scoring/facility/all_facilities_for_emergency_roads_ver8
217	-----	9.6.15		Facilities for Primary Emergency Road Study	Birinci Derece Acil Ulaşım Yollarıyla Bağlanacak Tesislere Ait Çalışma	transportation/road/road_scoring/facility/all_facilities_for_primary_emergency_roads_ver8
218	-----	-----		Urban Vulnerability Evaluation	Kentsel Hasar Görebilirlik Değerlendirmesi	vulnerability/building_and_road_and_slope/vulnerability_score_ver8
219	-----	10.2.3		Land Availability-1: Built-up and Urbanized Area Ratio	Arazi Elde Edilebilirliği-1 : Yapılmış ve Kentsel Alan Oranı	vulnerability/landuse/land_availability_1_ver8
220	-----	10.2.4		Land Availability-2: Building Coverage Ratio	Arazi Elde Edilebilirliği-2 : Taban Alanı Katsayısı	vulnerability/landuse/land_availability_2_ver8
221	-----	10.2.5	D-5	Land Availability for Urban Structure Improvement	Kentsel Yapının İyileştirilmesine Yönelik Arazi Elde Edilebilirliği	vulnerability/landuse/land_availability_urban_structure_ver8
222	-----	10.2.6		Location Map of Proposed Strategic Improvement Measures for Building and Urban Structure Issues by Mahalle	Binalar ve Kentsel Yapı için Önerilen Stratejik İyileştirme Tedbirlerinin Mahallelere Göre Lokasyon Haritası	vulnerability/landuse/proposal_building_and_urban_ver8
223	-----	-----		Location Map of Proposed Building Structure Improvement by Mahalle	Önerilen Bina Yapılarının İyileştirilmesi ile İlgili Mahallelere Göre Lokasyon Haritası	vulnerability/landuse/proposal_building_structure_ver8
224	-----	10.2.7		Location Map of Proposed Strategic Urban Redevelopment Measures and Specialized Measures for Historical Urban Conservation Areas	Önerilen Stratejik Kentsel Dönüşüm Tedbirleri ve Tarihi Kentsel Alanların Korunması İçinuzmanlaşmış Tedbirleri İçeren Lokasyon Haritası	vulnerability/landuse/proposal_urban_ver8
225	10.2	-----	D-8	Proposed Measures to Improve Building/Urban Structure	Bina/Kentsel Yapının İyileştirilmesi için Önerilen Tedbirler	vulnerability/landuse/proposed_improved_building_ver8
226	-----	10.1.3		Vulnerability of Building Structure-1: Heavily/Moderately Damaged Building Ratio	Bina Yapısının Hasar Görebilirliği-1 : Ağır/Orta Hasarlı Binaların Oranı	vulnerability/landuse/vulnerability_building_structure_1_ver8
227	-----	10.1.4		Vulnerability of Building Structure-2: Trends of Building and Urban Renewal	Bina Yapısının Hasar Görebilirliği-2 : Bina ve Kentsel Yenilenme Eğilimi	vulnerability/landuse/vulnerability_building_structure_2_ver8
228	-----	-----	D-6	Vulnerability of Building Structure: All Factors	Bina Yapısının Hasar Görebilirliği : Bütün Faktörler	vulnerability/landuse/vulnerability_building_structure_all_ver8
229	-----	10.1.9	D-7	Vulnerability Issues on Building and Urban Structure for Earthquake Disaster	Deprem Felaketine Yönelik Bina ve Kentsel Yapının Hasar Görebilirlik Durumu	vulnerability/landuse/vulnerability_issues_on_urban_structure_ver8
230	-----	10.1.5		Vulnerability of Urban Structure-1: Land and Building Utilization Condition	Kentsel Yapının Hasar Görebilirliği-1 : Arazi ve Bina Kullanımı	vulnerability/landuse/vulnerability_issues_urban_structure_1_ver8
231	-----	10.1.6		Vulnerability of Urban Structure-2: Road Density (m/ha)	Kentsel Yapının Hasar Görebilirliği-2 : Yol Yoğunluğu (m/ha)	vulnerability/landuse/vulnerability_issues_urban_structure_2_ver8
232	-----	10.1.7		Vulnerability of Urban Structure-3: Narrow Road Ratio	Kentsel Yapının Hasar Görebilirliği-3 : Dar Yolların Oranı	vulnerability/landuse/vulnerability_issues_urban_structure_3_ver8
233	-----	10.1.8		Vulnerability of Urban Structure-4: Availability of Parks/Open Space for Primary Evacuation Place	Kentsel Yapının Hasar Görebilirliği-4 : Öncelikli Tahliye Alanları için Park/Açık Alanların Elde Edilebilirliği	vulnerability/landuse/vulnerability_issues_urban_structure_4_ver8