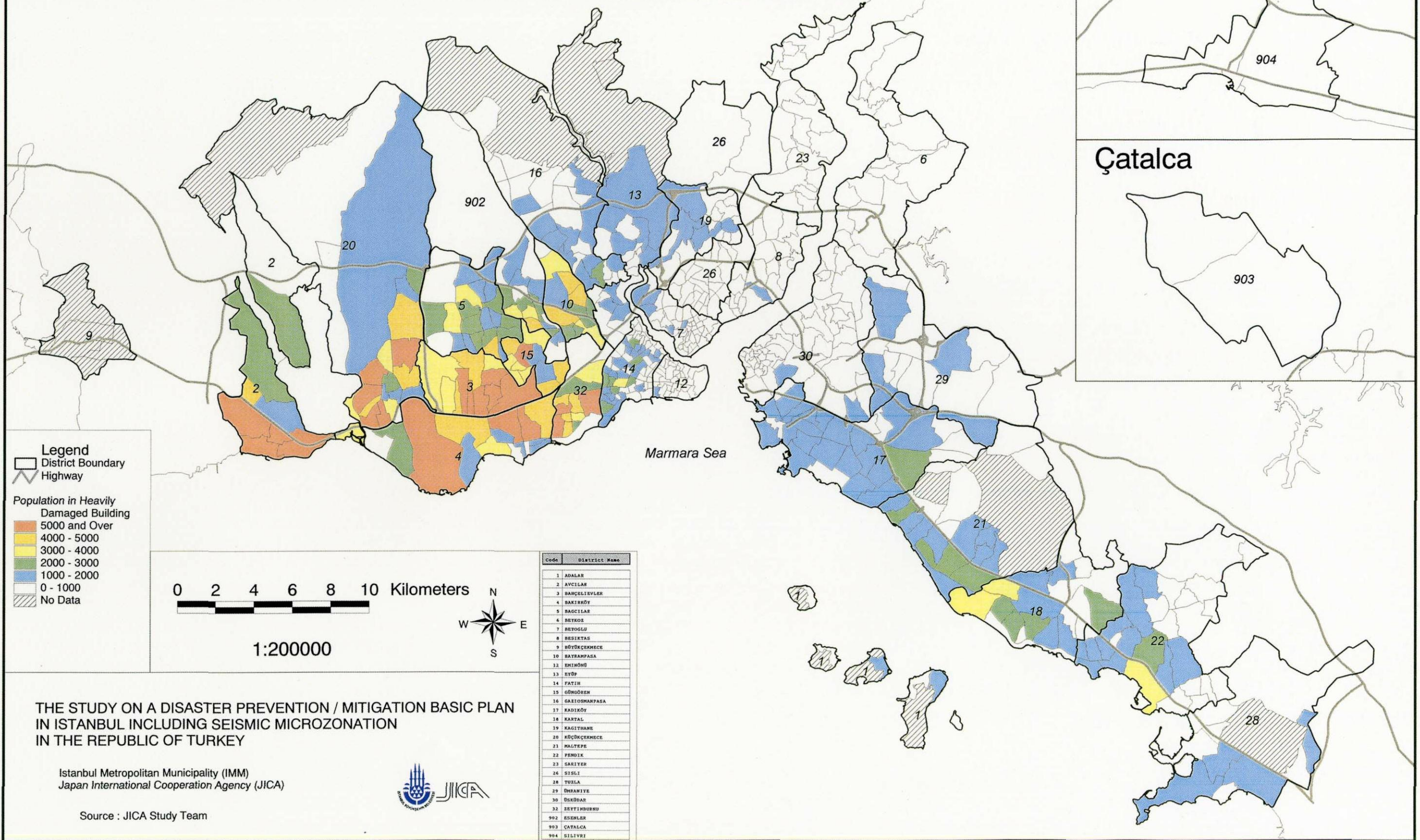


D. Urban Vulnerability Analysis and Evaluation

Vulnerability Evaluation : Emergency Operation Issue Population in Heavily Damaged Building

Hasar Görebilirlik Degerlendirmesi : Acil Müdahale Kapsami - Agir Hasarli Binalarda Bulunan Nüfus



THE STUDY ON A DISASTER PREVENTION / MITIGATION BASIC PLAN
IN ISTANBUL INCLUDING SEISMIC MICROZONATION
IN THE REPUBLIC OF TURKEY

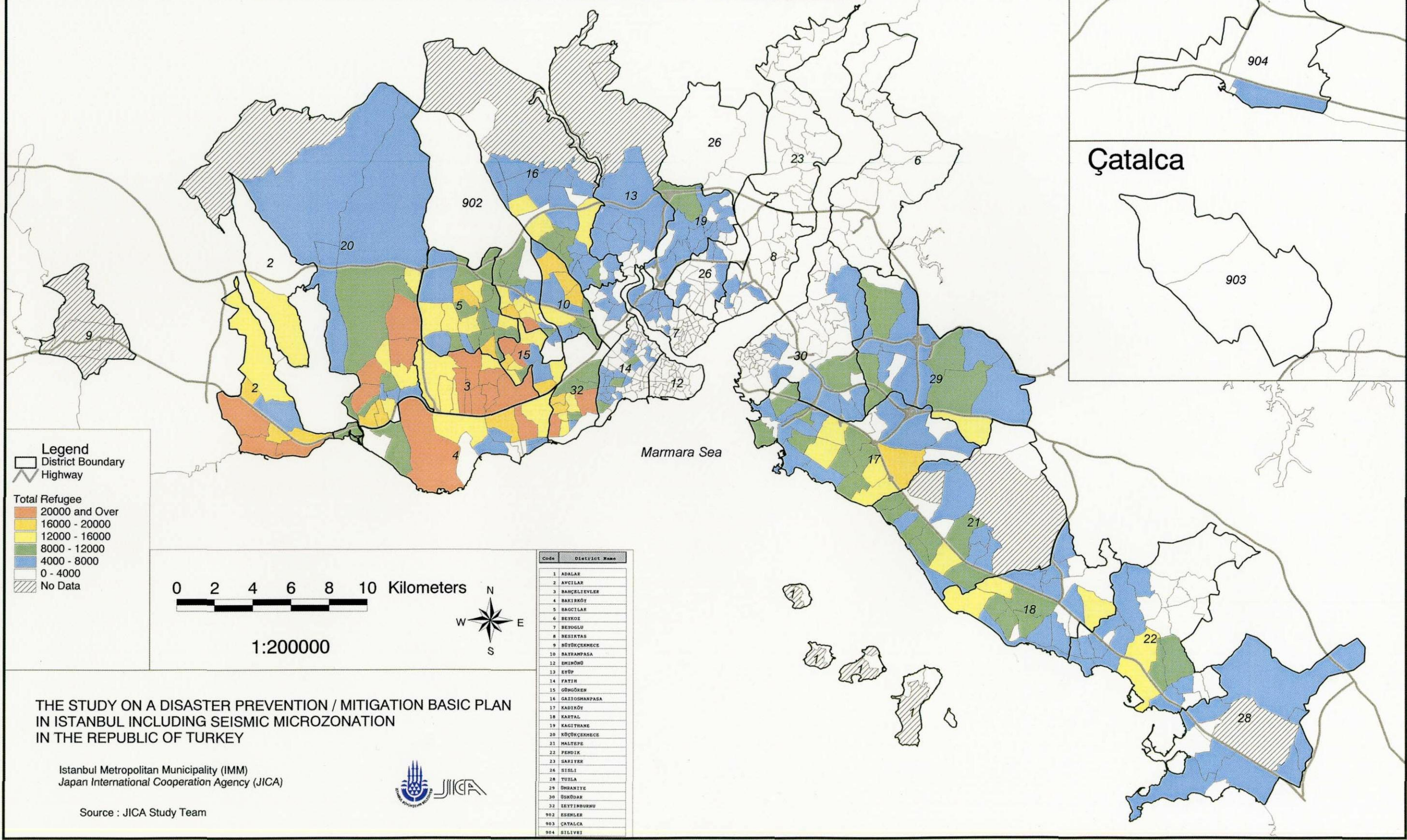
Istanbul Metropolitan Municipality (IMM)
Japan International Cooperation Agency (JICA)



Source : JICA Study Team

Vulnerability Evaluation : Emergency Operation Issue Total Refugee

Hasar Görebilirlik Değerlendirmesi : Acil Müdahale Kapsamı - Evsiz Kalan Nüfus



THE STUDY ON A DISASTER PREVENTION / MITIGATION BASIC PLAN
IN ISTANBUL INCLUDING SEISMIC MICROZONATION
IN THE REPUBLIC OF TURKEY

Istanbul Metropolitan Municipality (IMM)
Japan International Cooperation Agency (JICA)



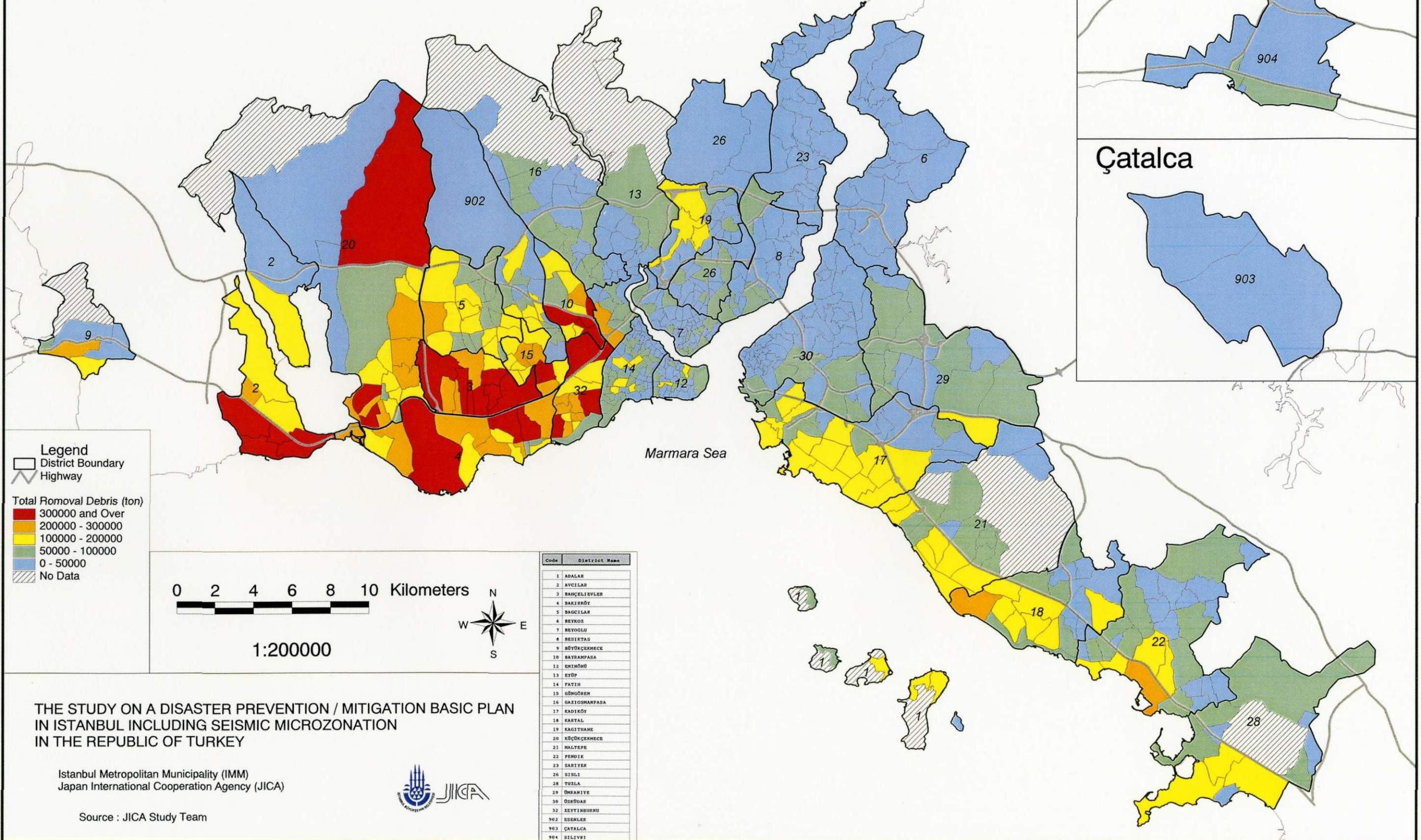
Source : JICA Study Team

D-2 Vulnerability Evaluation: Emergency Operation Issue Total Refugee

Vulnerability Evaluation : Emergency Operation Issue

Total Removal Debris

Hasar Görebilirlik Değerlendirmesi : Acil Müdahale Kapsamı - Enkazin Kaldırılması



THE STUDY ON A DISASTER PREVENTION / MITIGATION BASIC PLAN
IN ISTANBUL INCLUDING SEISMIC MICROZONATION
IN THE REPUBLIC OF TURKEY

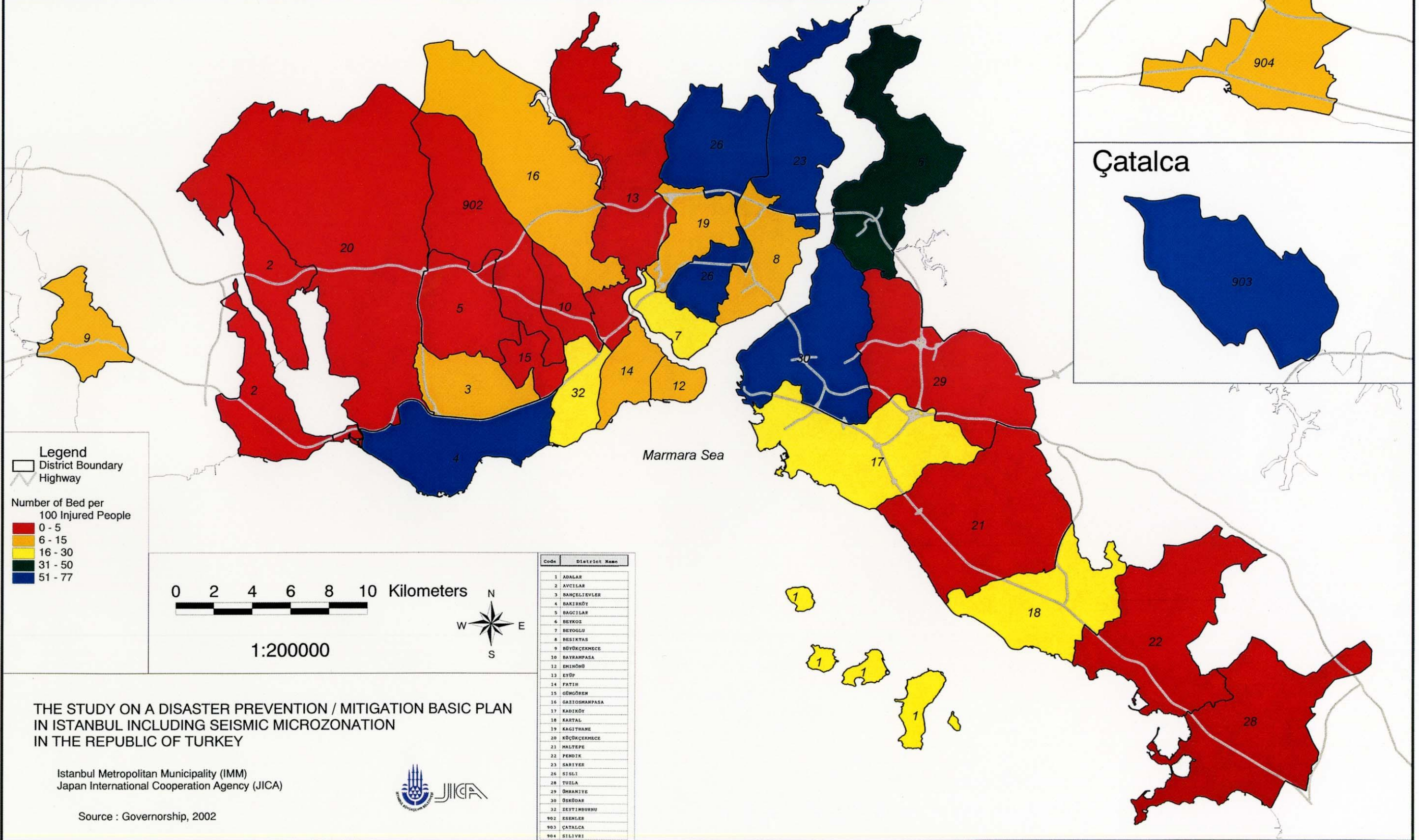
Istanbul Metropolitan Municipality (IMM)
Japan International Cooperation Agency (JICA)



Source : JICA Study Team

Medical Facility : Number of Bed per 100 Heavily Injured People in Model C

Saglik Tesisi : Agir Yarali 100 kisiye düsen Yatak Sayisi ; Model C



THE STUDY ON A DISASTER PREVENTION / MITIGATION BASIC PLAN IN ISTANBUL INCLUDING SEISMIC MICROZONATION IN THE REPUBLIC OF TURKEY

Istanbul Metropolitan Municipality (IMM)
 Japan International Cooperation Agency (JICA)

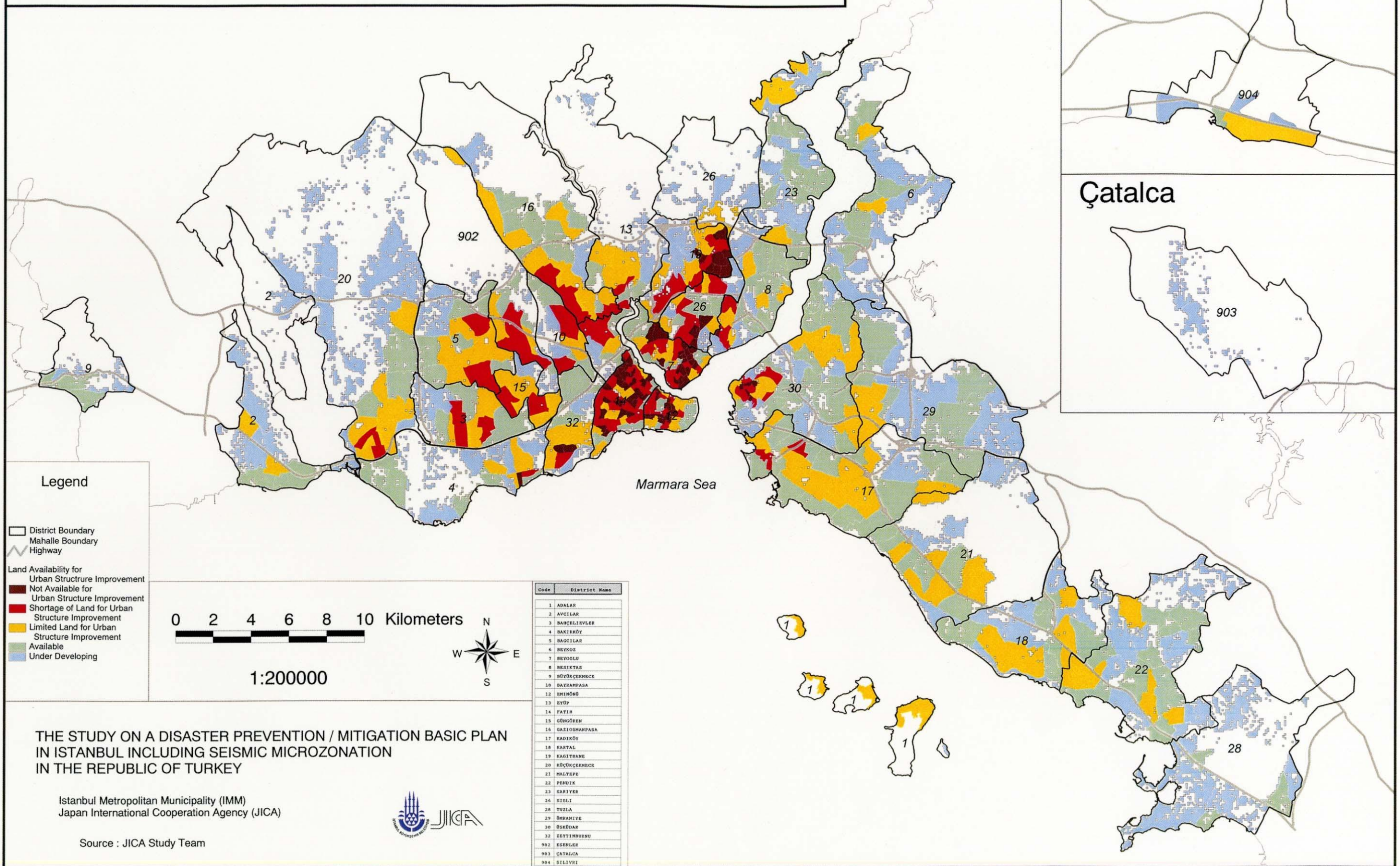


Source : Governorship, 2002

D-4 Medical Facility: Number of Bed per 100 Heavily Injured People in Model C

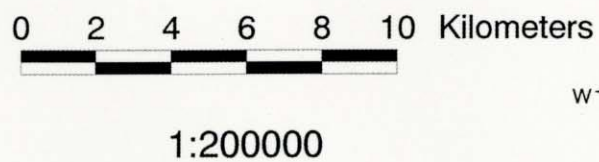
Land Availability for Urban Structure Improvement

Kentsel Yapının İyileştirilmesine Yönelik Arazi Elde Edilebilirliği



Legend

- District Boundary
- Mahalle Boundary
- Highway
- Land Availability for Urban Structure Improvement
 - Not Available for Urban Structure Improvement
 - Shortage of Land for Urban Structure Improvement
 - Limited Land for Urban Structure Improvement
 - Available
 - Under Developing



Code	District Name
1	ADALAR
2	AVCILAR
3	BACILIVLER
4	BAKIRKÖY
5	BACILAR
6	BEYOĞLU
7	BEYOĞLU
8	BESIKTAS
9	BÜYÜKÇERMECE
10	BAZARPAŞA
12	EMİRHÖY
13	EYÜP
14	FATİH
15	GÜNGÖREN
16	GAZİOSMANPAŞA
17	KADIKÖY
18	KARTAL
19	KAGITÇANE
20	KÜÇÜKÇERMECE
21	MALTEPE
22	PENDEK
23	SARIER
24	SİSLİ
28	TUZLA
29	ÜMRANİYE
30	ÖSKÜDAR
32	ZETTİNBÜŞÜ
902	ESENLER
903	ÇATALCA
904	SİLİVRİ

THE STUDY ON A DISASTER PREVENTION / MITIGATION BASIC PLAN IN ISTANBUL INCLUDING SEISMIC MICROZONATION IN THE REPUBLIC OF TURKEY

Istanbul Metropolitan Municipality (İMM)
Japan International Cooperation Agency (JICA)

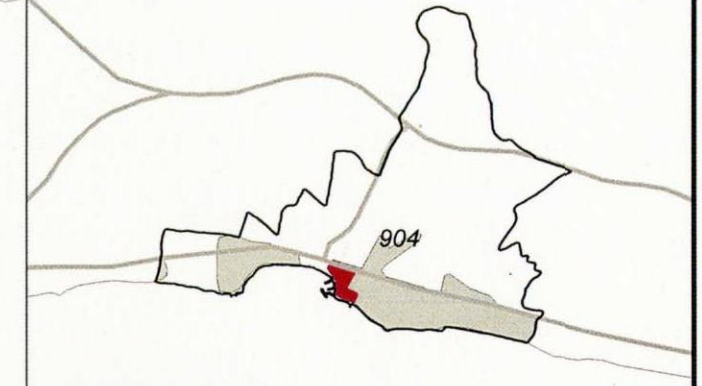


Source : JICA Study Team

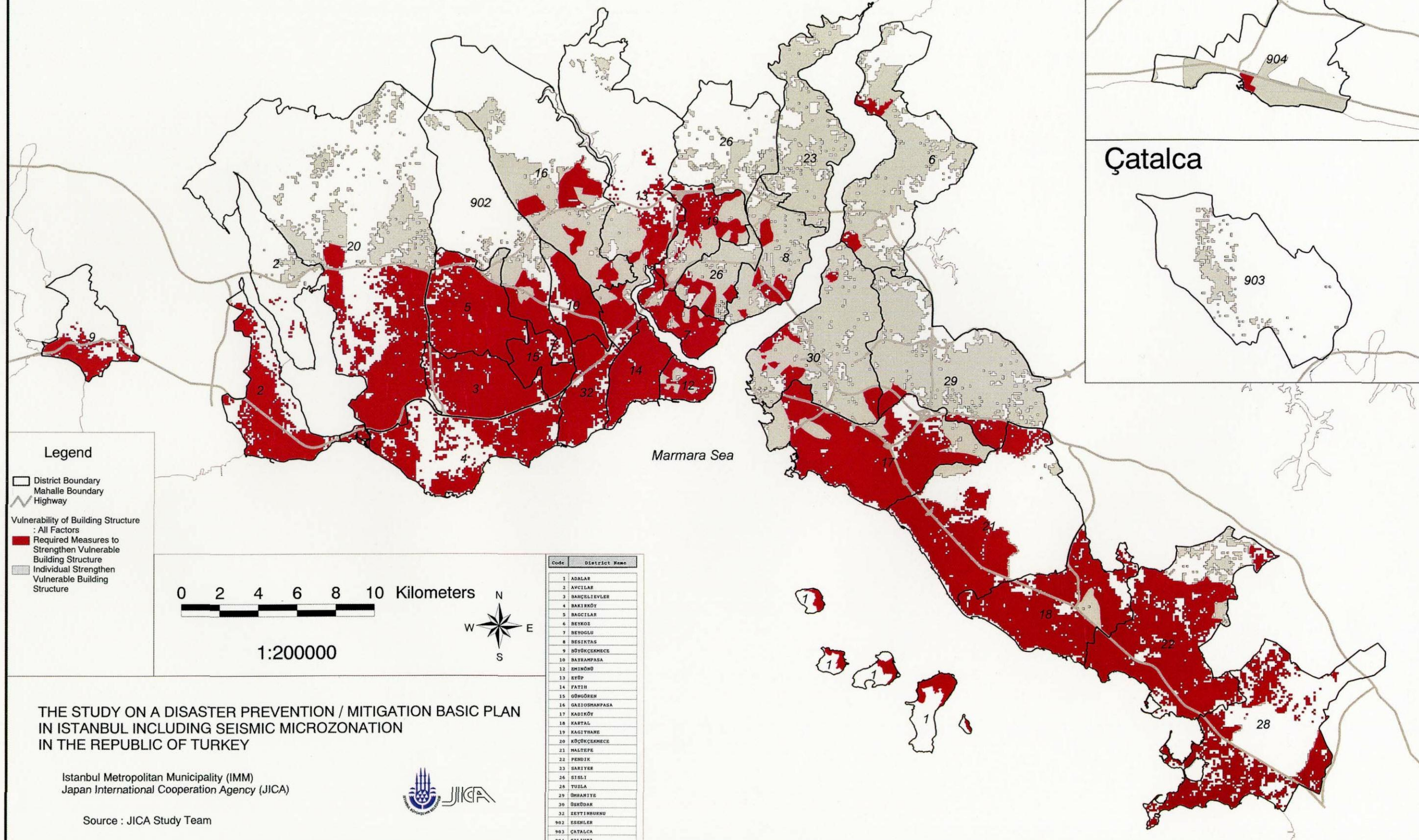
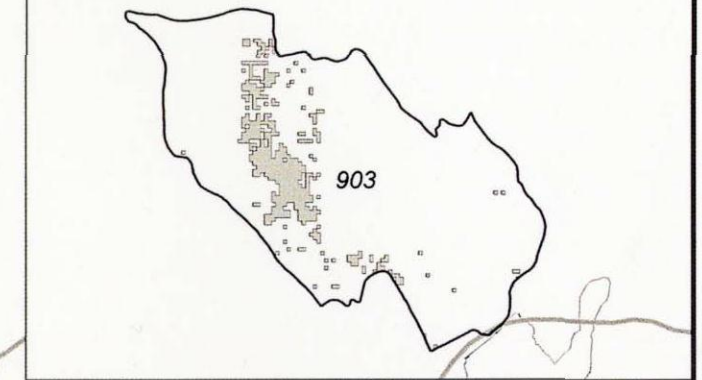
Vulnerability of Building Structure: All Factors

Bina Yapısının Hasar Görebilirliği : Bütün Faktörler

Silivri



Çatalca



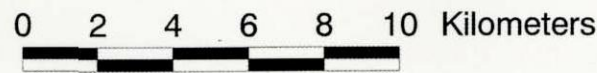
Legend

- District Boundary
- Mahalle Boundary
- Highway

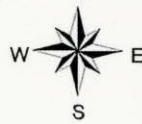
Vulnerability of Building Structure

: All Factors

- Required Measures to Strengthen Vulnerable Building Structure
- Individual Strengthen Vulnerable Building Structure



1:200000



Code	District Name
1	ADALAR
2	AVCIYAR
3	BANÇELIYEVLER
4	BAKIRKÖY
5	BAGCILAR
6	BEYOĞLU
7	BEYOĞLU
8	BEŞİKTAŞ
9	BÜYÜKÇEKMECE
10	BAĞRAMPAŞA
11	EMİNOĞLU
12	BEŞİKTAŞ
13	BEŞİKTAŞ
14	FATİH
15	ÖZLÜ
16	GAZİOSMANPAŞA
17	KADIKÖY
18	KARTAL
19	KAGITHANE
20	KÜÇÜKÇEKMECE
21	HALTİPE
22	PENİK
23	SARIER
24	SİSLİ
25	TUZLA
26	ÜSKÜDAR
27	ÜSKÜDAR
28	ÜSKÜDAR
29	ÜSKÜDAR
30	ÜSKÜDAR
31	ÜSKÜDAR
32	ÜSKÜDAR
902	ESENLER
903	ÇATALCA
904	SİLİVRİ

THE STUDY ON A DISASTER PREVENTION / MITIGATION BASIC PLAN IN ISTANBUL INCLUDING SEISMIC MICROZONATION IN THE REPUBLIC OF TURKEY

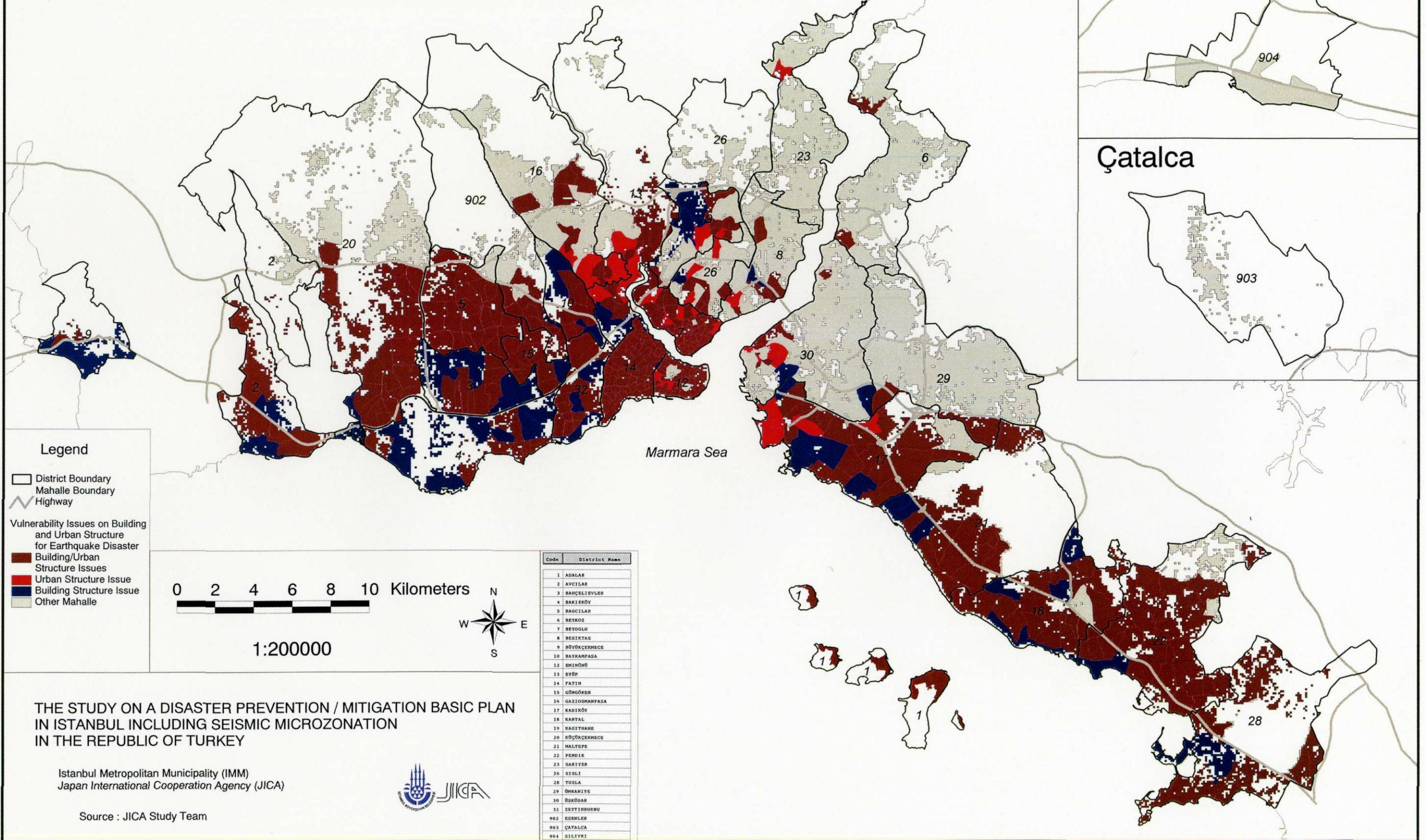
Istanbul Metropolitan Municipality (IMM)
Japan International Cooperation Agency (JICA)



Source : JICA Study Team

Vulnerability Issues on Building and Urban Structure for Earthquake Disaster

Deprem Felaketine Yönelik Bina ve Kentsel Yapının Hasar Görebilirlik Durumu



THE STUDY ON A DISASTER PREVENTION / MITIGATION BASIC PLAN IN ISTANBUL INCLUDING SEISMIC MICROZONATION IN THE REPUBLIC OF TURKEY

Istanbul Metropolitan Municipality (IMM)
Japan International Cooperation Agency (JICA)



Source : JICA Study Team