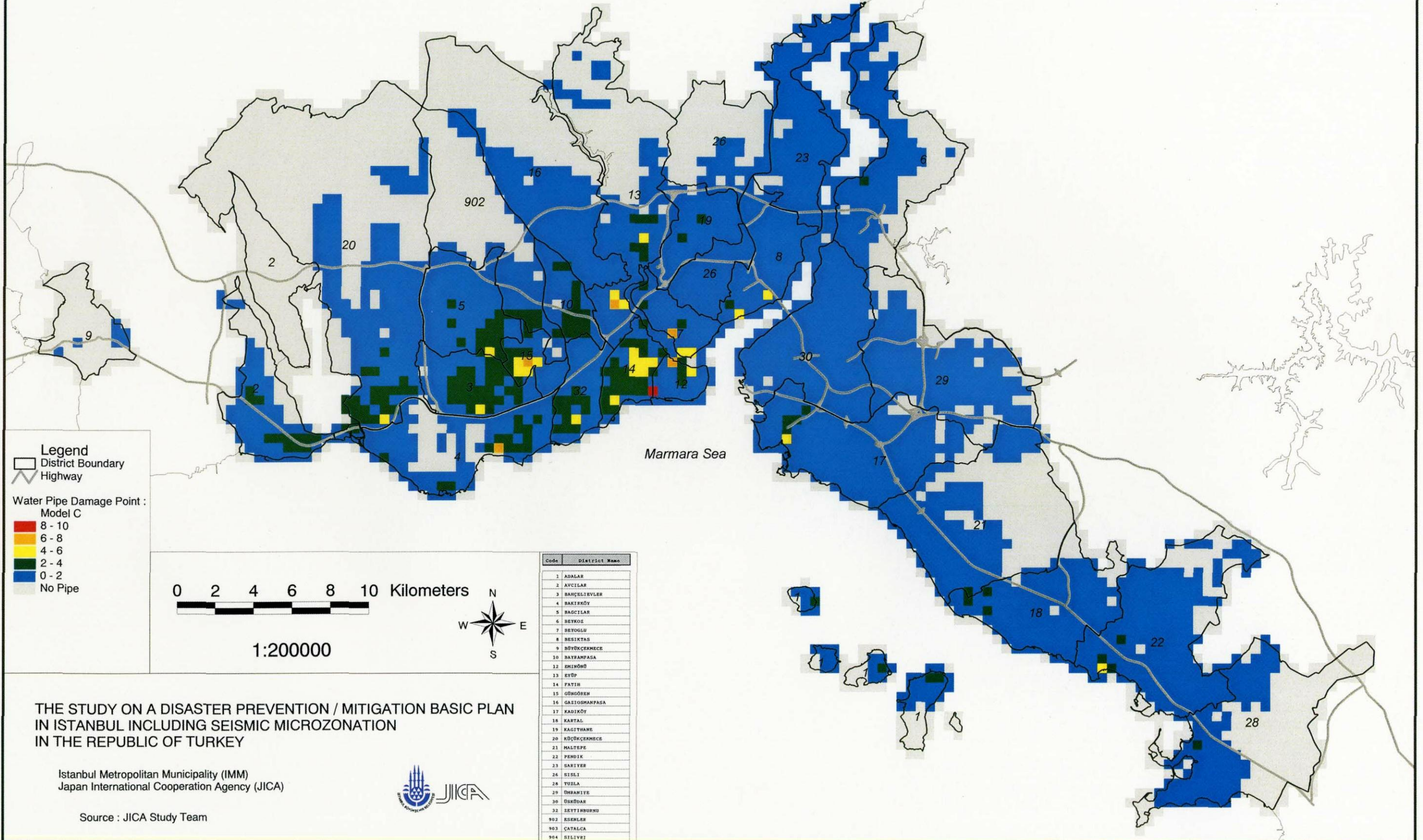


Distribution of Water Pipe Damage : Model C

İçme Suyu Boru Hatları Hasar Dağılımı : Model C



THE STUDY ON A DISASTER PREVENTION / MITIGATION BASIC PLAN
 IN ISTANBUL INCLUDING SEISMIC MICROZONATION
 IN THE REPUBLIC OF TURKEY

Istanbul Metropolitan Municipality (IMM)
 Japan International Cooperation Agency (JICA)

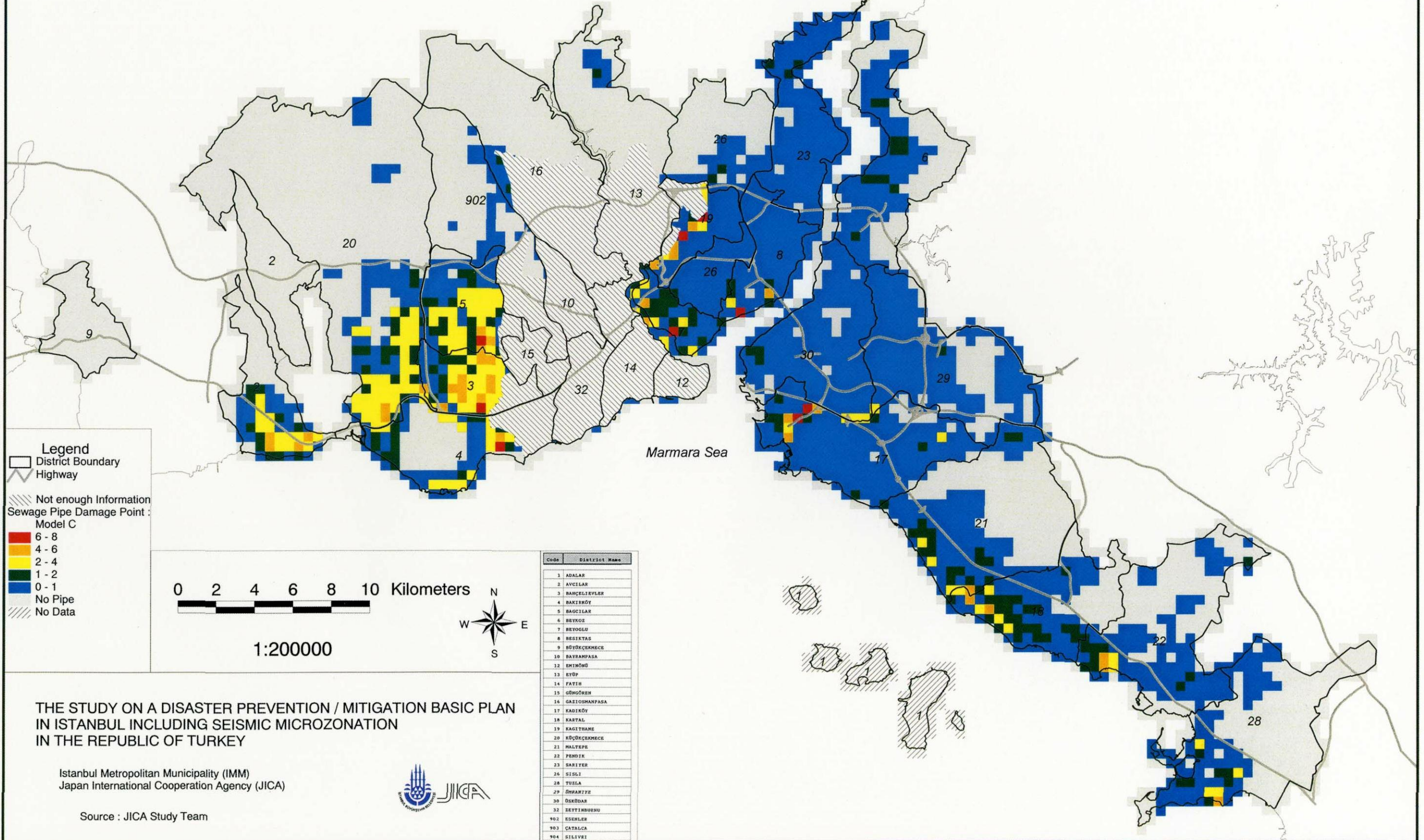


Source : JICA Study Team

C-10 Distribution of Water Pipe Damage: Model C

Distribution of Sewage Pipe Damage : Model C

Kanalizasyon Boru Hatlari Hasar Dagilimi : Model C



THE STUDY ON A DISASTER PREVENTION / MITIGATION BASIC PLAN IN ISTANBUL INCLUDING SEISMIC MICROZONATION IN THE REPUBLIC OF TURKEY

Istanbul Metropolitan Municipality (IMM)
Japan International Cooperation Agency (JICA)

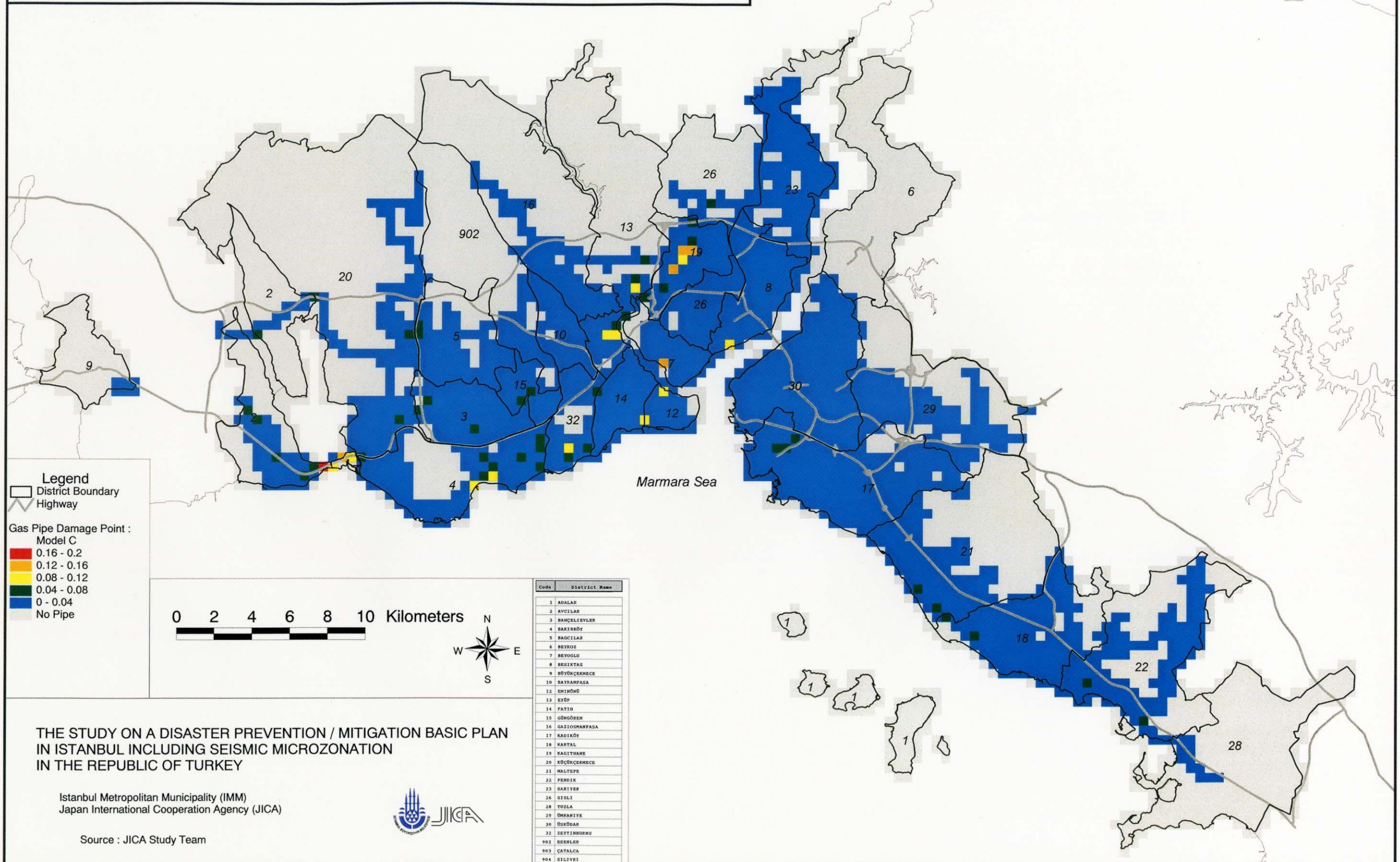


Source : JICA Study Team

C-11 Distribution of Sewage Pipe Damage: Model C

Distribution of Natural Gas Pipe Damage : Model C

Dogal Gaz Boru Hatlari Hasar Dagilimi : Model C



THE STUDY ON A DISASTER PREVENTION / MITIGATION BASIC PLAN
IN ISTANBUL INCLUDING SEISMIC MICROZONATION
IN THE REPUBLIC OF TURKEY

Istanbul Metropolitan Municipality (IMM)
Japan International Cooperation Agency (JICA)

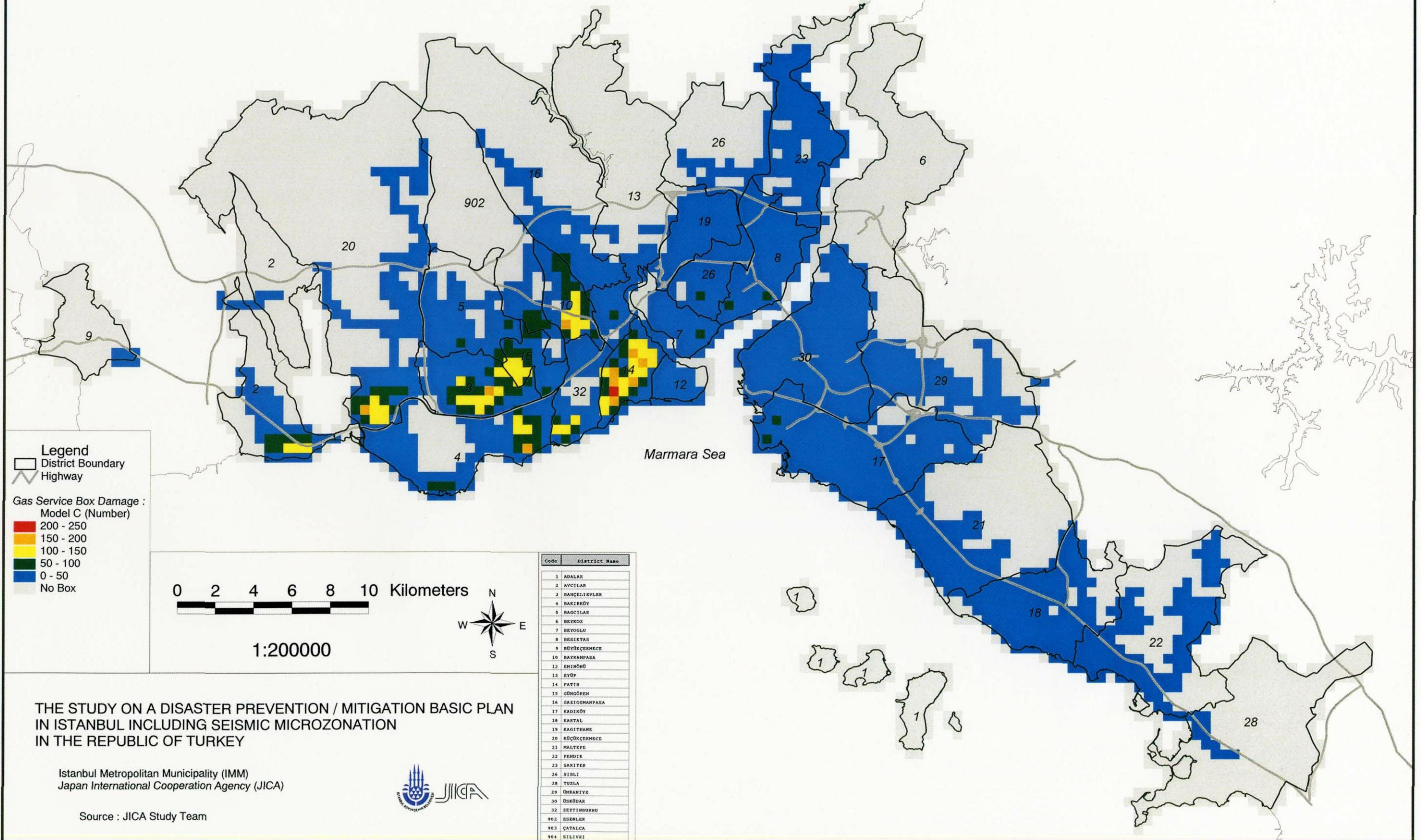


Source : JICA Study Team

C-12 Distribution of Natural Gas Pipe Damage: Model C

Distribution of Natural Gas Service Box Damage : Model C

Dogal Gaz Servis Kutulari Hasar Dagilimi : Model C



THE STUDY ON A DISASTER PREVENTION / MITIGATION BASIC PLAN
IN ISTANBUL INCLUDING SEISMIC MICROZONATION
IN THE REPUBLIC OF TURKEY

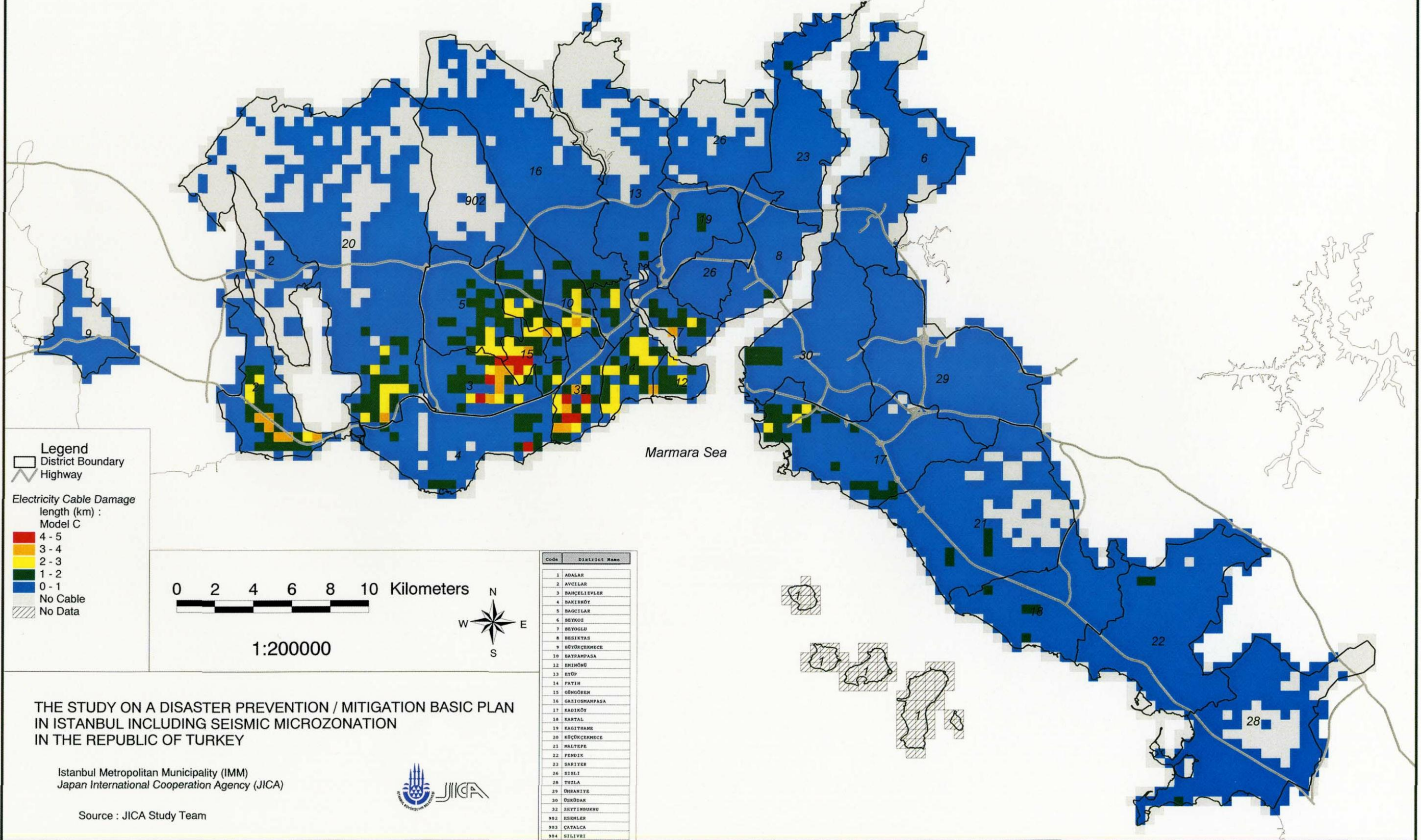
Istanbul Metropolitan Municipality (IMM)
Japan International Cooperation Agency (JICA)



Source : JICA Study Team

Electricity Cable Damage Length (km) : Model C

Hasarli Elektrik Hatlarinin Uzunlgu (km) : Model C



THE STUDY ON A DISASTER PREVENTION / MITIGATION BASIC PLAN
 IN ISTANBUL INCLUDING SEISMIC MICROZONATION
 IN THE REPUBLIC OF TURKEY

Istanbul Metropolitan Municipality (IMM)
 Japan International Cooperation Agency (JICA)

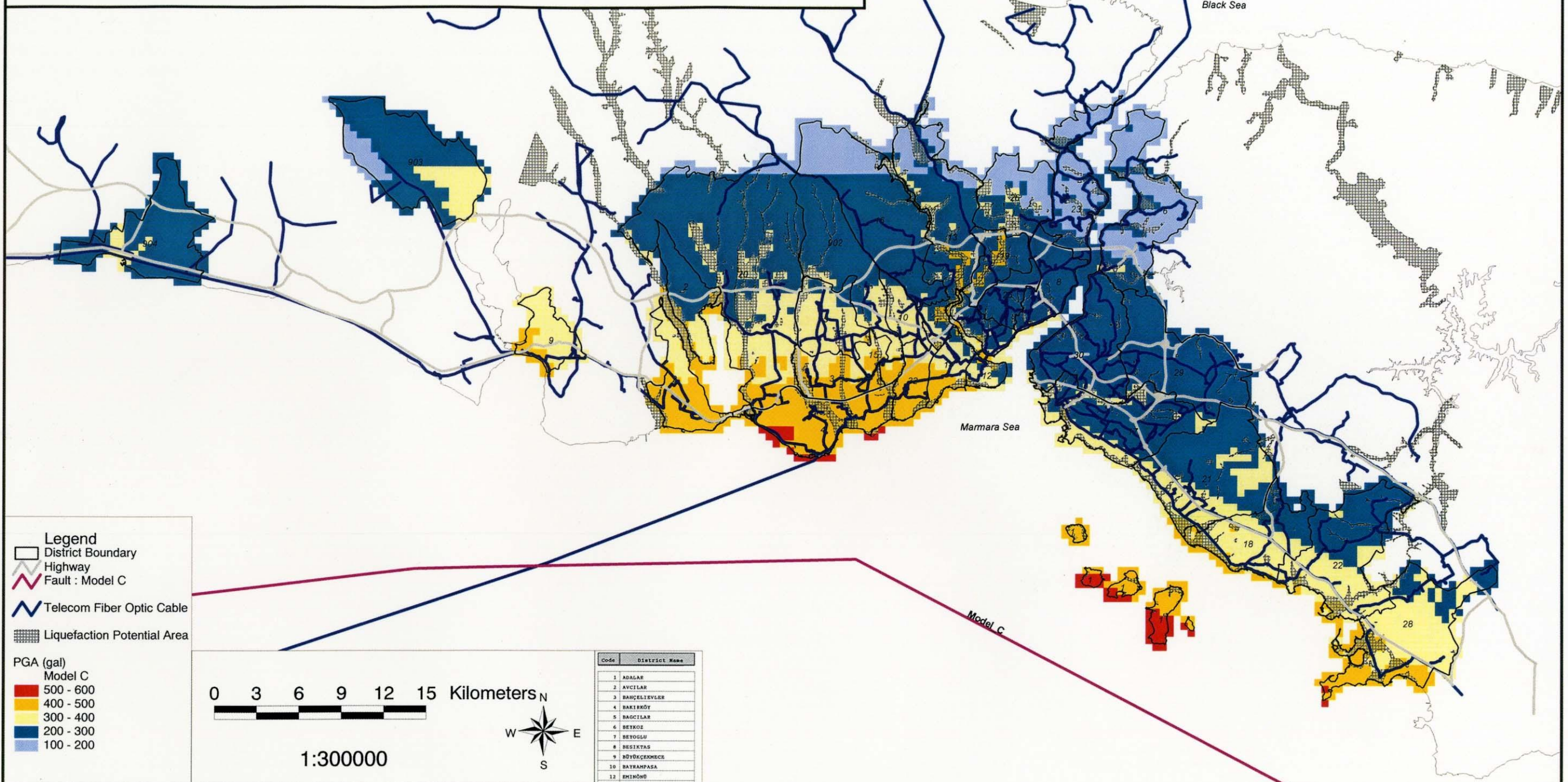


Source : JICA Study Team

C-14 Electricity Cable Damage length (km): Model C

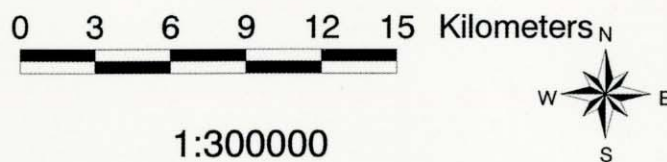
Distribution of Telecommunication Fiber Optic Cable

Telekom Fiber Optik Kablo Hatlari



- Legend**
- District Boundary
 - Highway
 - Fault : Model C
 - Telecom Fiber Optic Cable
 - Liquefaction Potential Area

- PGA (gal)**
- Model C
- 500 - 600
 - 400 - 500
 - 300 - 400
 - 200 - 300
 - 100 - 200



Code	District Name
1	ADALAR
2	AVCILAR
3	BAHÇELİEVLER
4	BAKIRKÖY
5	BAĞCILAR
6	BEYKOZ
7	BEYOĞLU
8	BEŞİKTAŞ
9	BÜYÜKÇERMECE
10	BATIRANPAŞA
11	EMİNOĞU
12	ETİP
13	FATİH
14	GÜNGÖR
15	GAZİOSMANPAŞA
16	KADIKÖY
17	KARTAL
18	KAGITHANE
19	KÜÇÜKÇERMECE
20	MALTEPE
21	PENDEK
22	SARİYER
23	SİĞİR
24	TUZLA
25	ÜMRANİYE
26	ÜSKÜDAR
27	ZEYTİNBURNU
902	ESENLER
903	ÇATALCA
904	SİLİVRİ

THE STUDY ON A DISASTER PREVENTION / MITIGATION BASIC PLAN
IN ISTANBUL INCLUDING SEISMIC MICROZONATION
IN THE REPUBLIC OF TURKEY

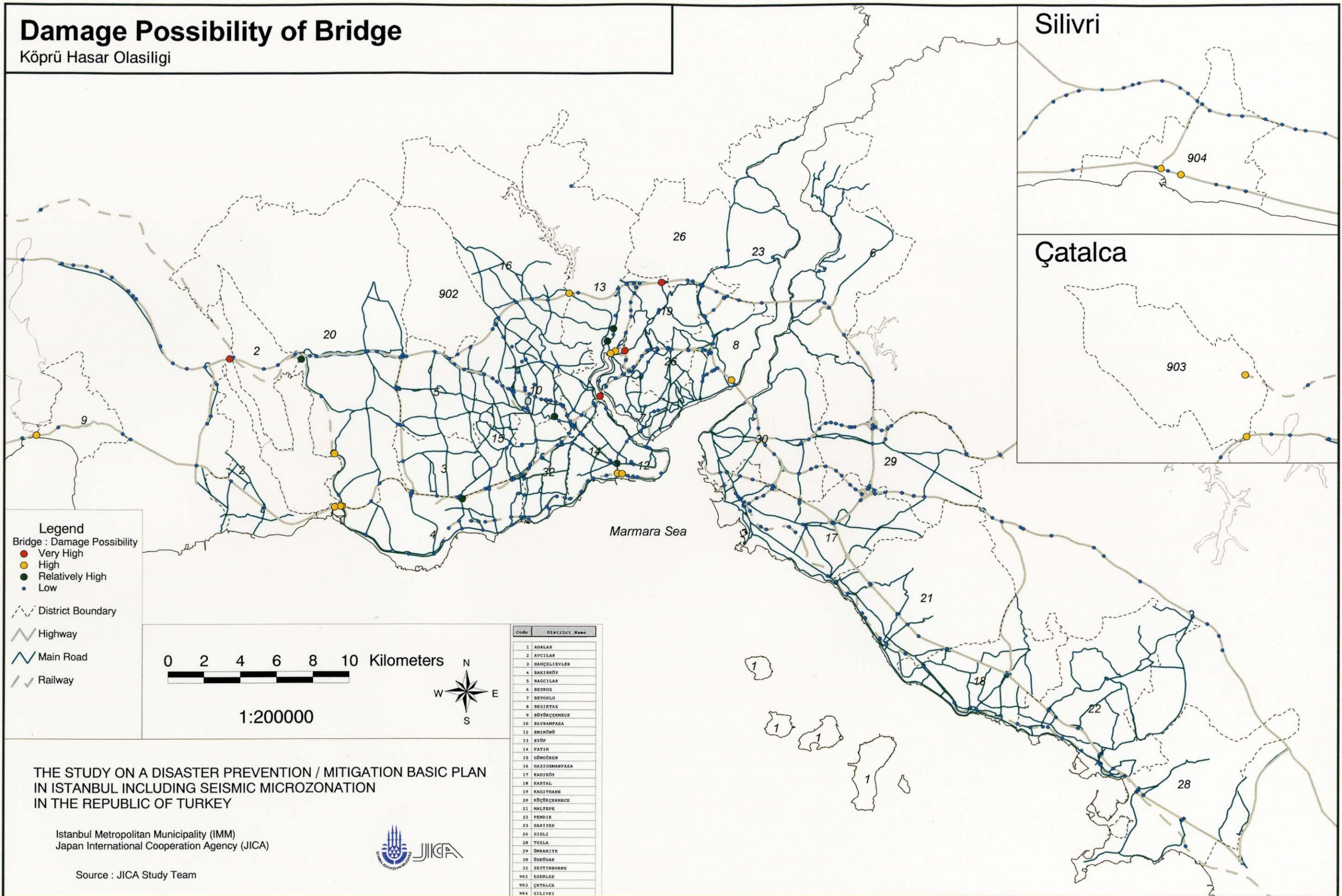
Istanbul Metropolitan Municipality (IMM)
Japan International Cooperation Agency (JICA)



Source : JICA Study Team

Damage Possibility of Bridge

Köprü Hasar Olasılığı



Silivri

904

Çatalca

903

Marmara Sea

- Legend**
- Bridge : Damage Possibility
- Very High
 - High
 - Relatively High
 - Low
- District Boundary
- Highway
- Main Road
- Railway

0 2 4 6 8 10 Kilometers

1:200000



Code	District Name
1	ADALAR
2	AVCILAR
3	BANÇELİEVLER
4	BAKIRKÖY
5	BAGCILAR
6	BETKÖE
7	BEYOĞLU
8	BESIKTAS
9	BÜYÜKÇEKMECE
10	BEYRAMPASA
11	EMİRHÜYÜK
12	EYÜP
13	FATİH
14	GÖNÜLSENER
15	GAZİOSMANPAŞA
16	KADIKÖY
17	KARTAL
18	KAGITHANE
19	KÜÇÜKÇEKMECE
20	MALTEPE
21	FENİKLİ
22	SARILAR
23	SİSİLİ
24	TUZLA
25	ÜSKÜDAR
26	ZETTİNBUURNU
902	ESENLER
903	ÇATALCA
904	SİLİVRİ

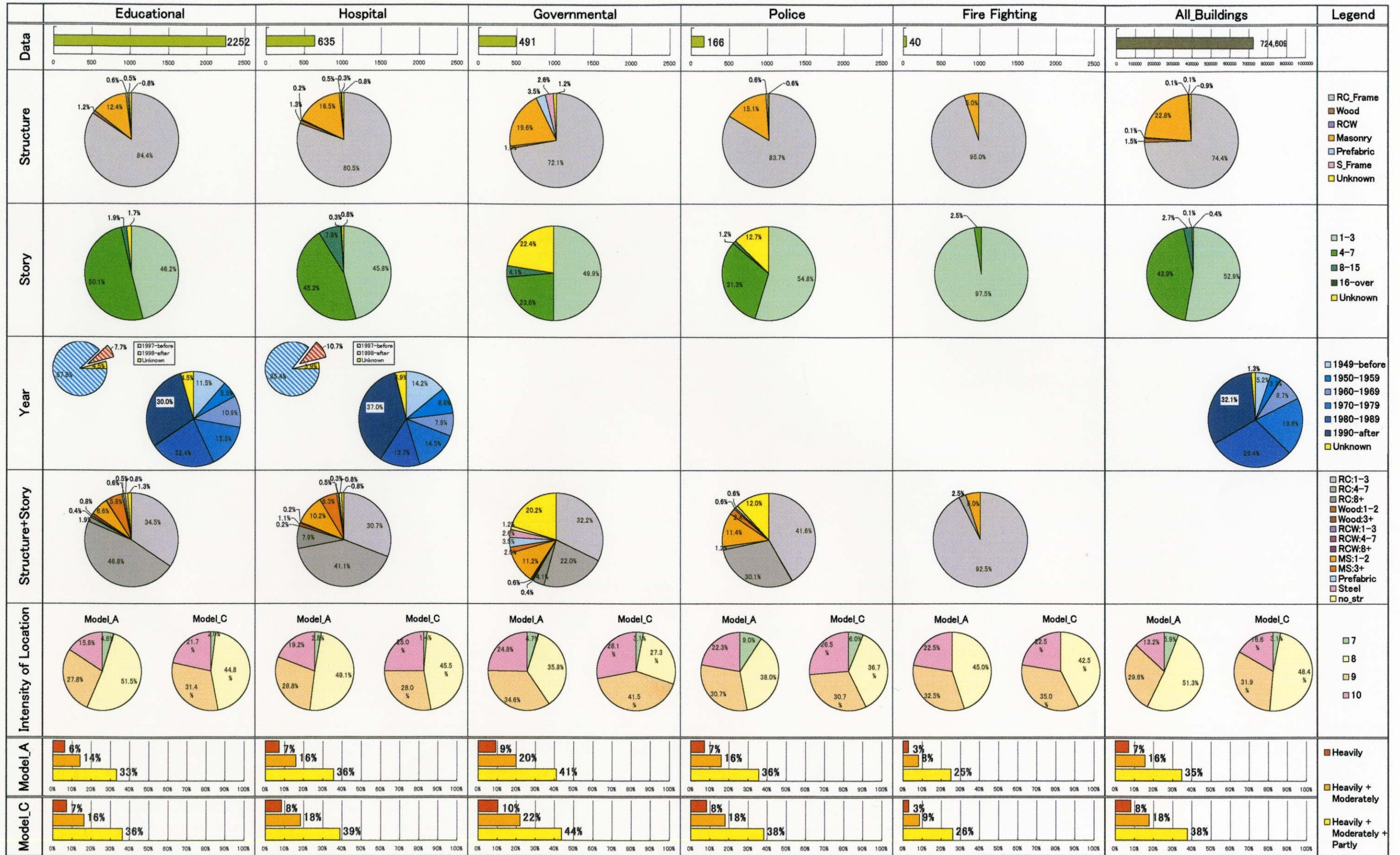
THE STUDY ON A DISASTER PREVENTION / MITIGATION BASIC PLAN
IN ISTANBUL INCLUDING SEISMIC MICROZONATION
IN THE REPUBLIC OF TURKEY

Istanbul Metropolitan Municipality (IMM)
Japan International Cooperation Agency (JICA)



Source : JICA Study Team

C-16 Damage Possibility of Bridge



C-17 Damage to Public Facilities