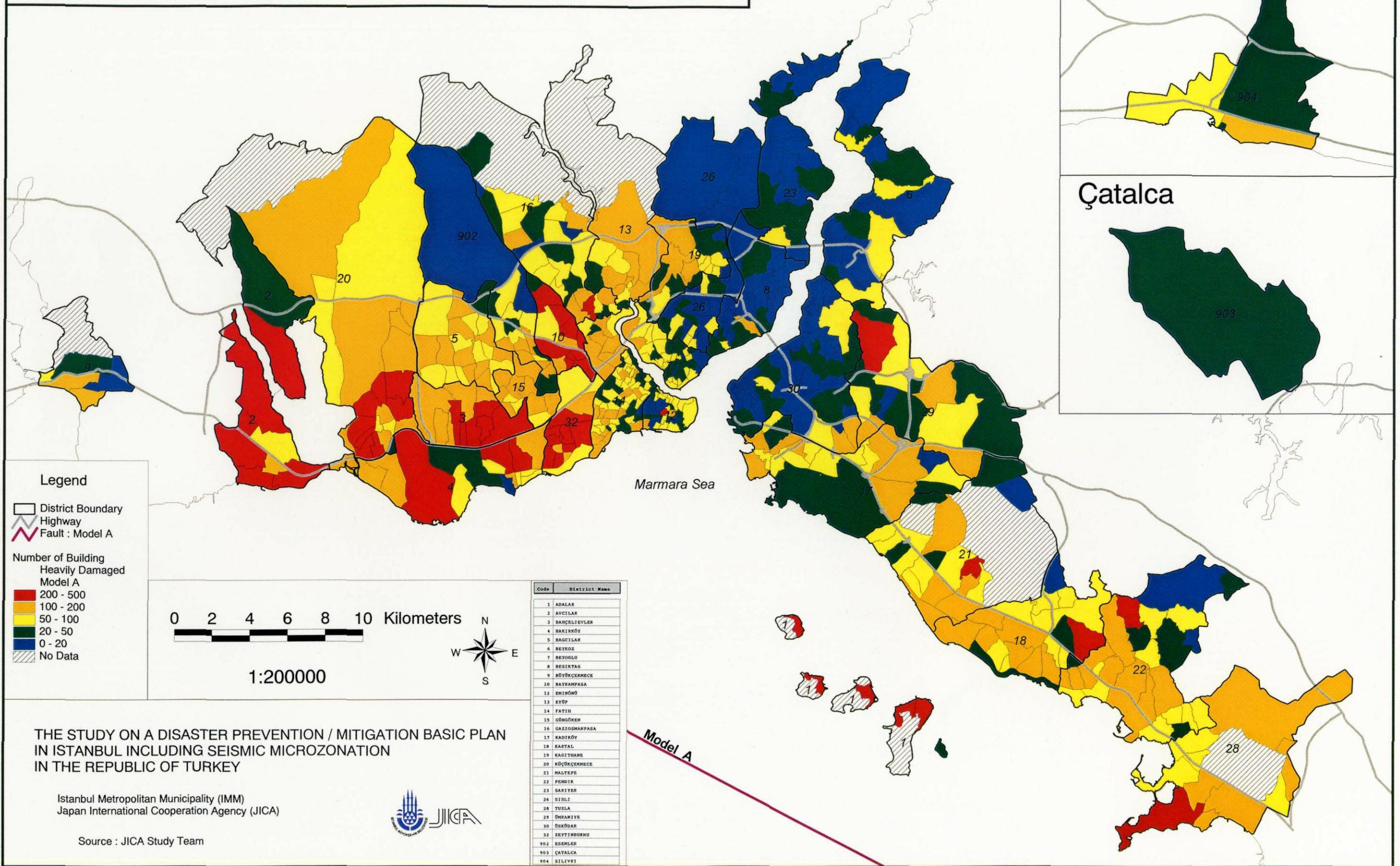


## **C. Seismic Damage Analysis**



# Number of Heavily Damaged Building : Model A

Agir Hasarli Binalarin Sayisi : Model A



THE STUDY ON A DISASTER PREVENTION / MITIGATION BASIC PLAN IN ISTANBUL INCLUDING SEISMIC MICROZONATION IN THE REPUBLIC OF TURKEY

Istanbul Metropolitan Municipality (IMM)  
Japan International Cooperation Agency (JICA)



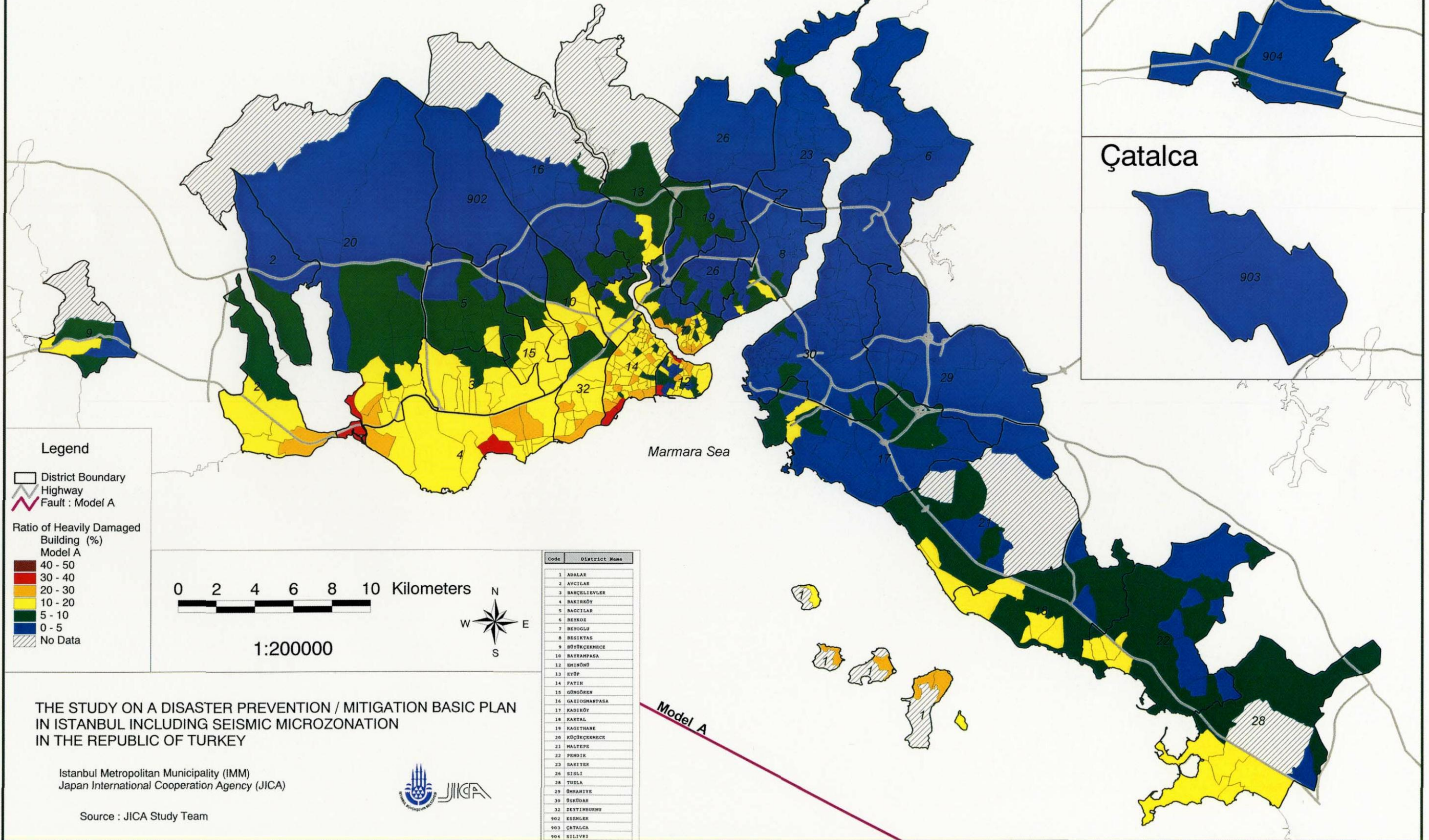
Source : JICA Study Team

C-1 Number of Heavily Damaged Building: Model A



# Ratio of Heavily Damaged Building : Model A

Agir Hasarli Binalarin Orani : Model A



Silivri

Çatalca

THE STUDY ON A DISASTER PREVENTION / MITIGATION BASIC PLAN  
IN ISTANBUL INCLUDING SEISMIC MICROZONATION  
IN THE REPUBLIC OF TURKEY

Istanbul Metropolitan Municipality (IMM)  
Japan International Cooperation Agency (JICA)



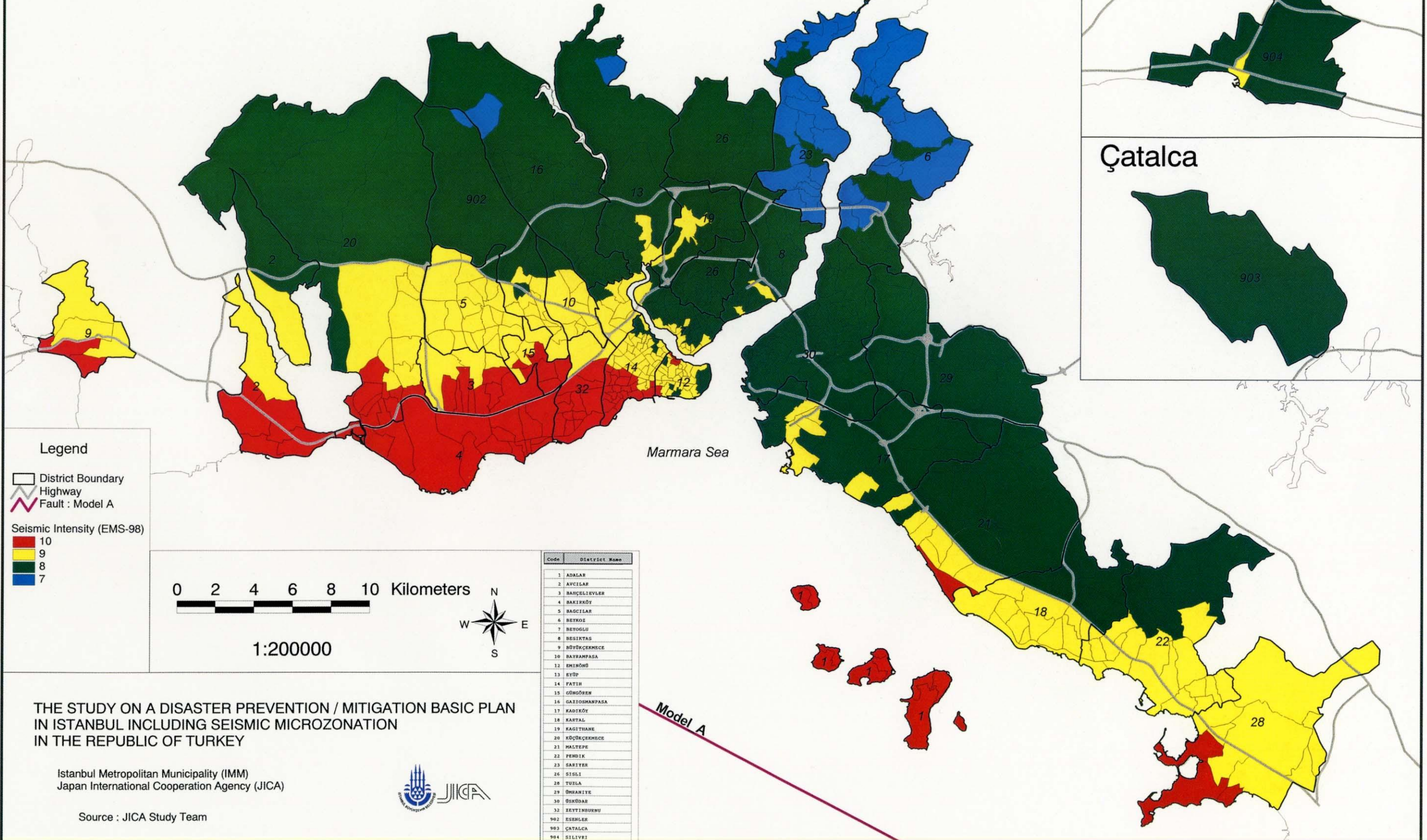
Source : JICA Study Team

C-2 Ratio of Heavily Damaged Building: Model A



# Seismic Intensity : Model A

Sismik Siddet : Model A



THE STUDY ON A DISASTER PREVENTION / MITIGATION BASIC PLAN  
IN ISTANBUL INCLUDING SEISMIC MICROZONATION  
IN THE REPUBLIC OF TURKEY

Istanbul Metropolitan Municipality (IMM)  
Japan International Cooperation Agency (JICA)



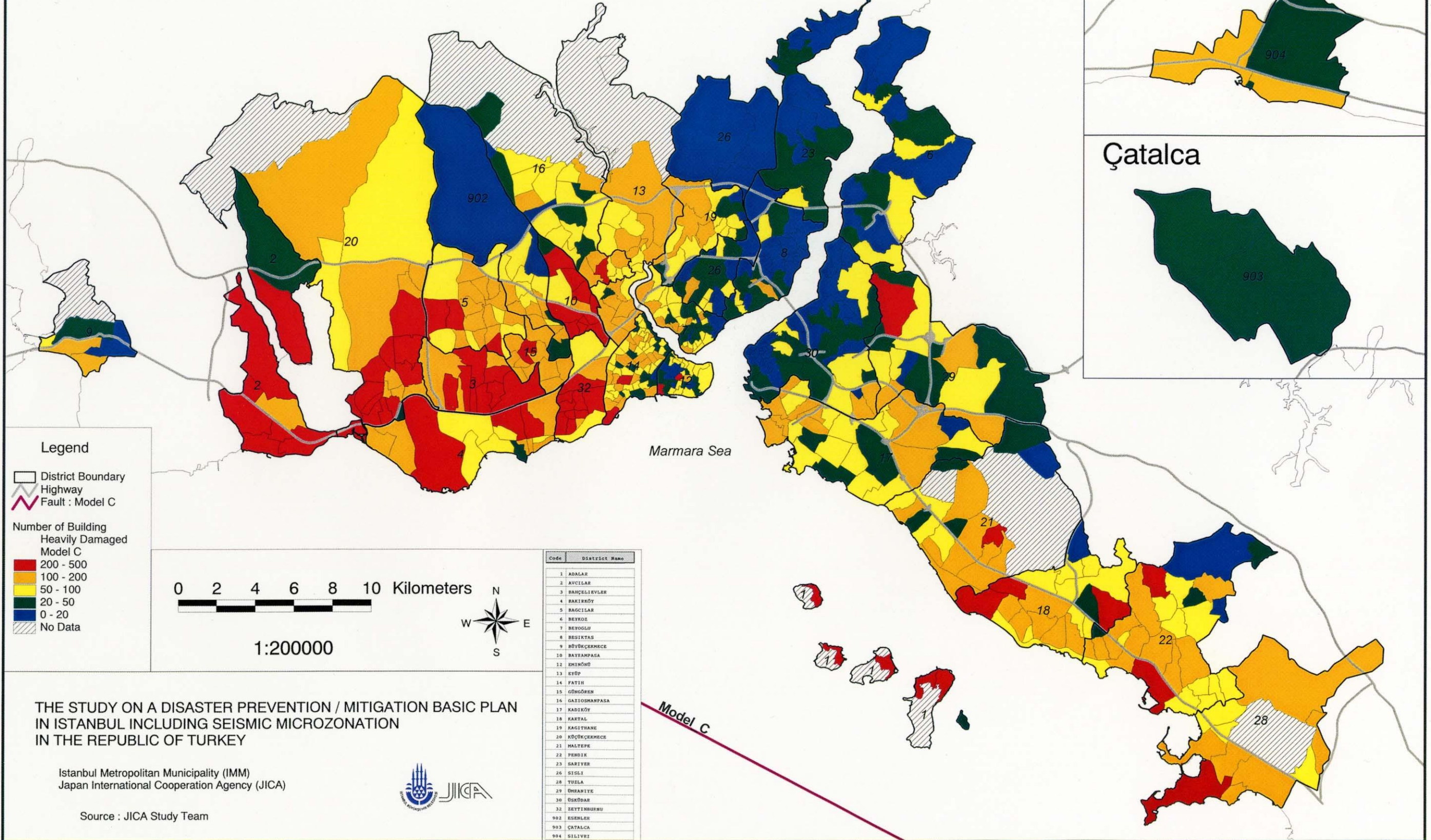
Source : JICA Study Team

C-3 Seismic Intensity: Model A



# Number of Heavily Damaged Building : Model C

Agir Hasarli Binalarin Sayisi : Model C



THE STUDY ON A DISASTER PREVENTION / MITIGATION BASIC PLAN IN ISTANBUL INCLUDING SEISMIC MICROZONATION IN THE REPUBLIC OF TURKEY

Istanbul Metropolitan Municipality (IMM)  
Japan International Cooperation Agency (JICA)



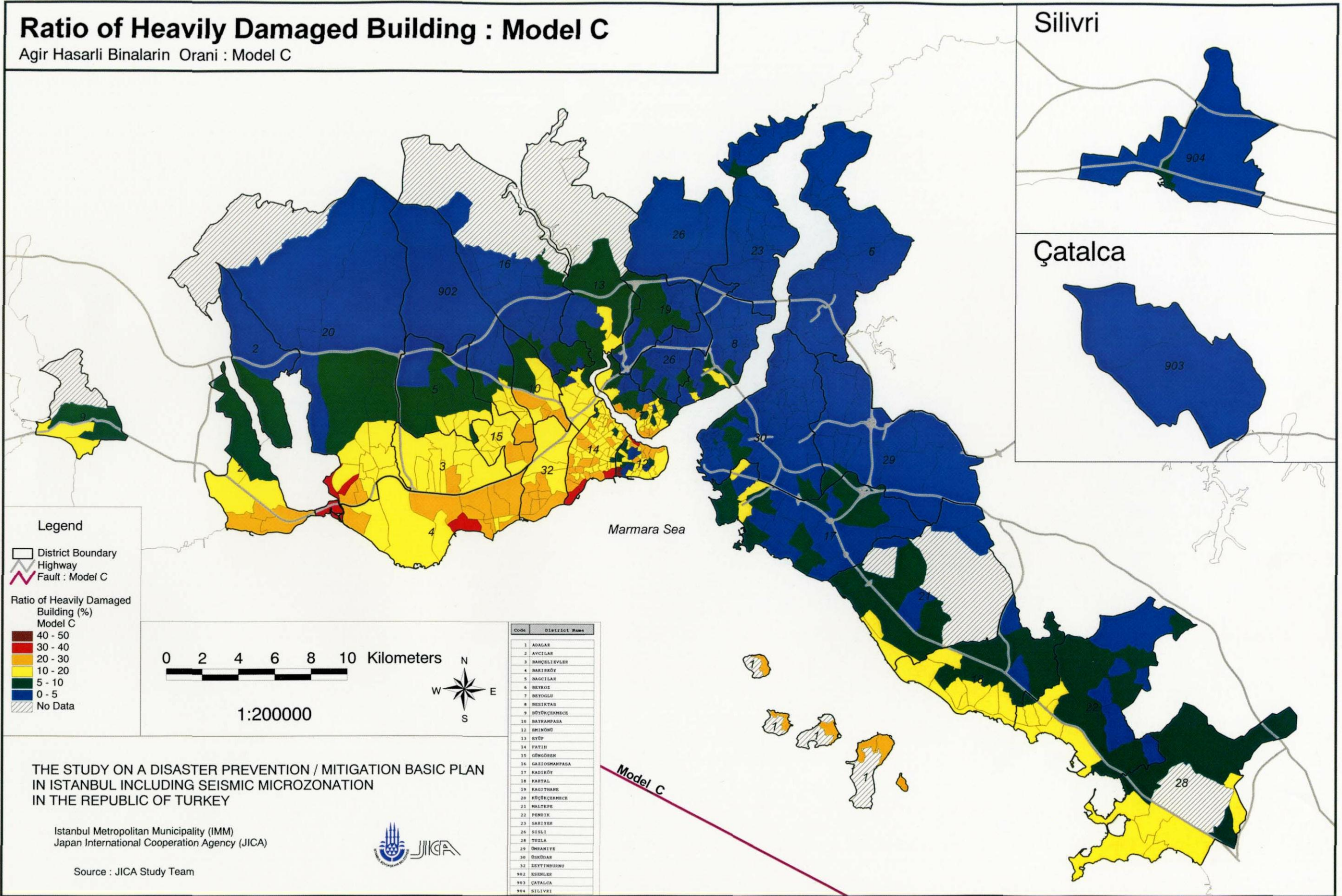
Source : JICA Study Team

C-4 Number of Heavily Damaged Building: Model C



# Ratio of Heavily Damaged Building : Model C

Agir Hasarli Binalarin Orani : Model C



### Legend

- District Boundary
- Highway
- Fault : Model C

### Ratio of Heavily Damaged Building (%) Model C

- 40 - 50
- 30 - 40
- 20 - 30
- 10 - 20
- 5 - 10
- 0 - 5
- No Data

0 2 4 6 8 10 Kilometers

1:200000



Code	District Name
1	ADALAR
2	AVCILAR
3	BANÇELİEVLER
4	BAĞCIKÖY
5	BAGCILAR
6	BEYKÖZ
7	BEYOĞLU
8	BESIKTAS
9	BÜYÜKÇEKMECE
10	BAYRAMPAŞA
11	EMİRNÖNÜ
12	EYÜP
13	FATİH
14	GÜNGÖREN
15	GAZİOSMANPAŞA
16	KADIKÖY
17	KARTAL
18	KAGITHANE
19	KÜÇÜKÇEKMECE
20	MALTEPE
21	PENİK
22	SARIER
23	SİĞİRCİ
24	TUZLA
25	ÜMRANİYE
26	ÖSKÖDAR
27	ZEYTİNLÜKÜ
902	ESENLER
903	ÇATALCA
904	SİLİVRİ

THE STUDY ON A DISASTER PREVENTION / MITIGATION BASIC PLAN IN ISTANBUL INCLUDING SEISMIC MICROZONATION IN THE REPUBLIC OF TURKEY

Istanbul Metropolitan Municipality (IMM)  
Japan International Cooperation Agency (JICA)



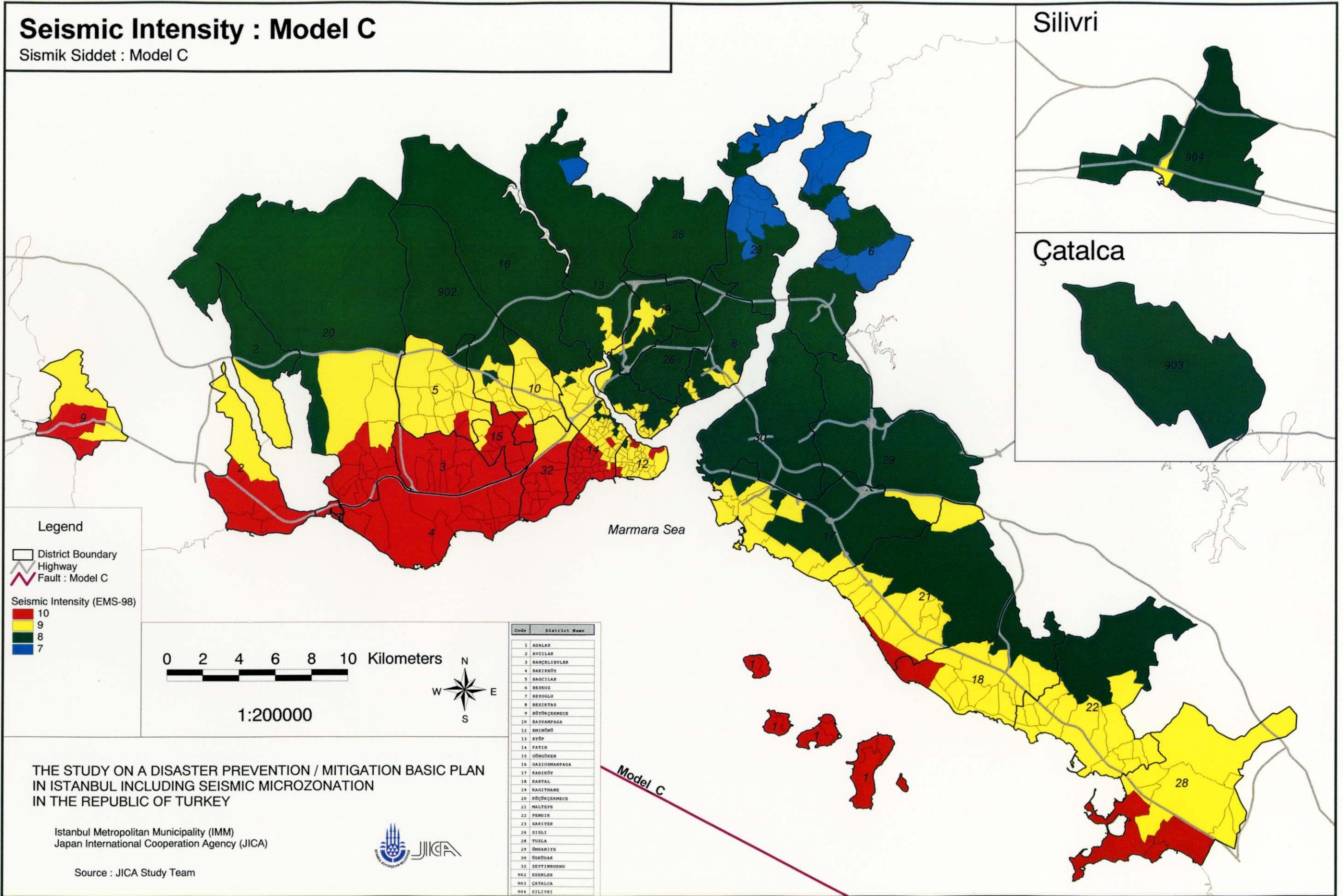
Source : JICA Study Team

C-5 Ratio of Heavily Damaged Building: Model C



# Seismic Intensity : Model C

Sismik Siddet : Model C

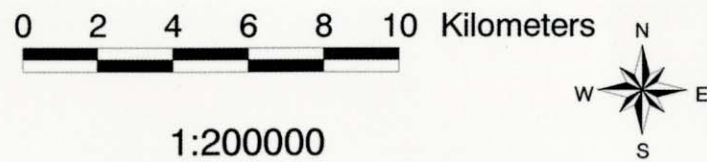


### Legend

- District Boundary
- Highway
- Fault : Model C

### Seismic Intensity (EMS-98)

- 10
- 9
- 8
- 7



Code	District Name
1	ADALAR
2	AVCILAR
3	BANÇELİEVLER
4	BAKIRKÖY
5	BAGCILAR
6	BEYOĞLU
7	BEŞİKTAŞ
8	BÜYÜKÇEKMECE
9	BAYRAMPAŞA
10	BEŞİKTAŞ
11	EMİRHÖNÜ
12	EYÜP
13	FATİH
14	ĞÜNEŞLİ
15	ĞÜNEŞLİ
16	ĞAZİOSMANPAŞA
17	KADIKÖY
18	KARTAL
19	KAGITHANE
20	KÜÇÜKÇEKMECE
21	MALTEPE
22	PENİCİK
23	SARIER
24	SİĞİRCI
25	SİĞİRCI
26	SİĞİRCI
27	TUZLA
28	ÜSKÜDAR
29	ÜSKÜDAR
30	ÜSKÜDAR
31	ÜSKÜDAR
32	ÜSKÜDAR
902	ESENLER
903	ÇATALCA
904	SİLİVRİ

THE STUDY ON A DISASTER PREVENTION / MITIGATION BASIC PLAN  
IN ISTANBUL INCLUDING SEISMIC MICROZONATION  
IN THE REPUBLIC OF TURKEY

Istanbul Metropolitan Municipality (IMM)  
Japan International Cooperation Agency (JICA)



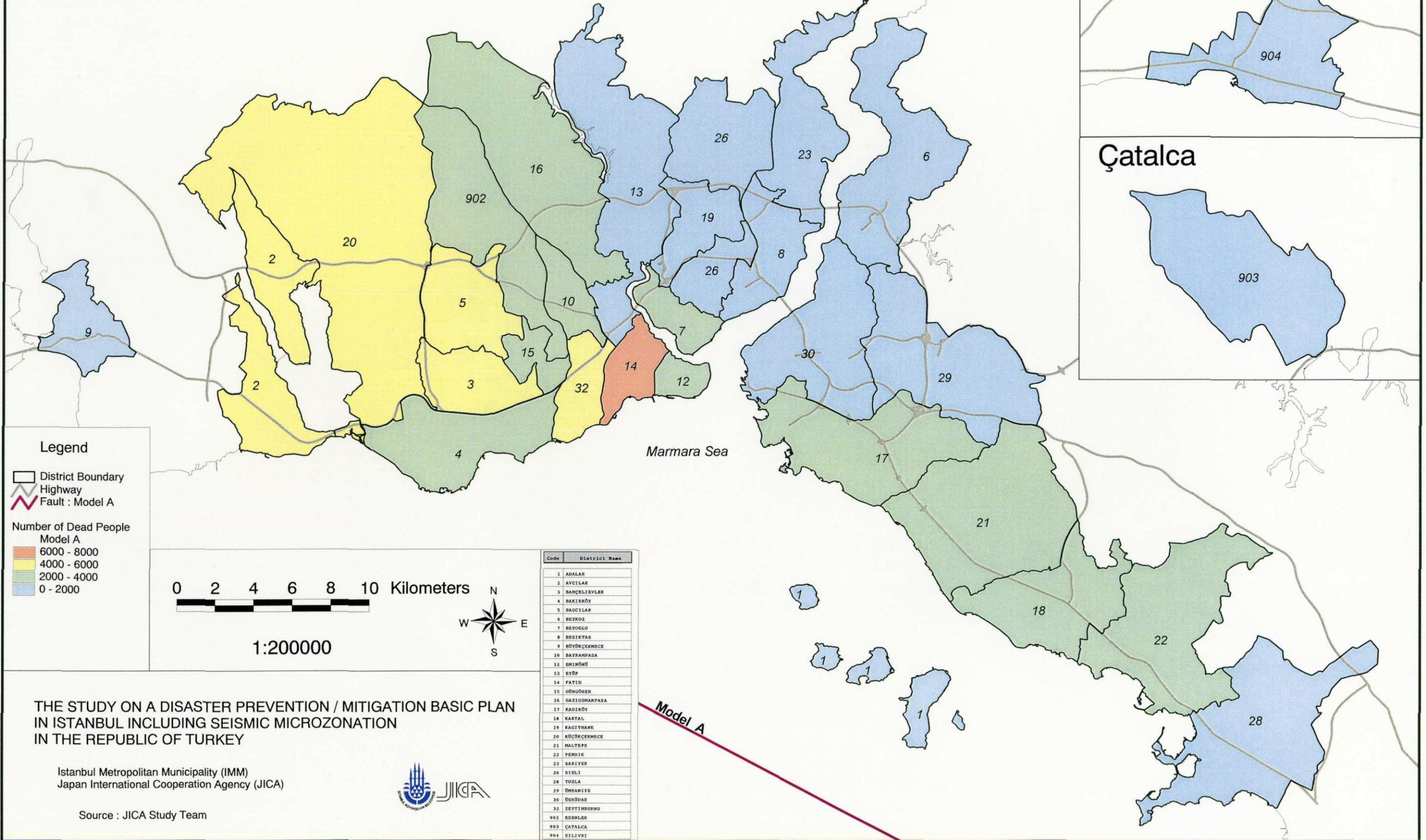
Source : JICA Study Team

C-6 Seismic Intensity: Model C



# Number of Dead People : Model A

Ölü Sayısı : Model A



THE STUDY ON A DISASTER PREVENTION / MITIGATION BASIC PLAN  
IN ISTANBUL INCLUDING SEISMIC MICROZONATION  
IN THE REPUBLIC OF TURKEY

Istanbul Metropolitan Municipality (IMM)  
Japan International Cooperation Agency (JICA)



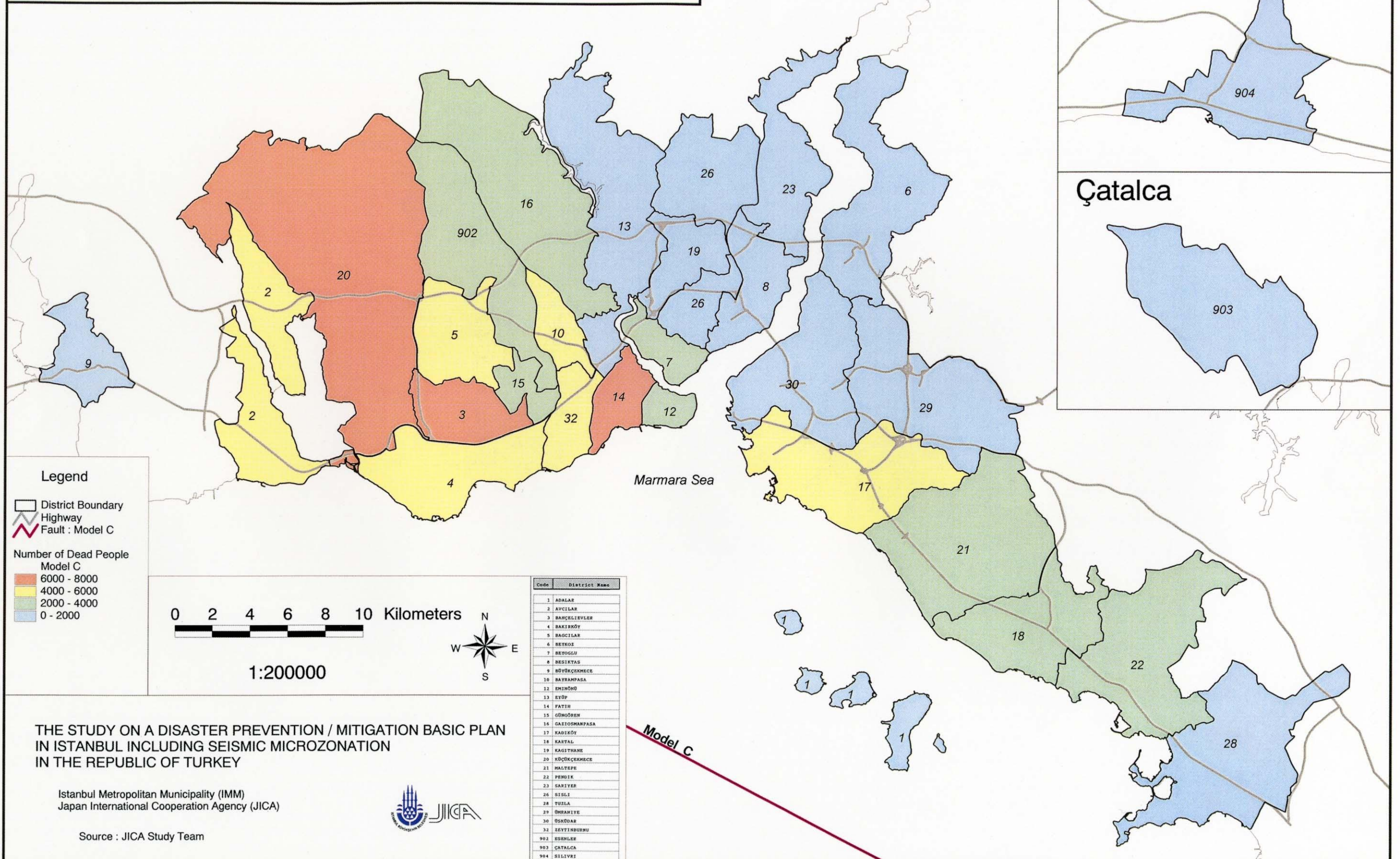
Source : JICA Study Team

C-7 Number of Dead People: Model A



# Number of Dead People : Model C

Ölü Sayısı : Model C



**Legend**

- District Boundary
- Highway
- Fault : Model C

**Number of Dead People Model C**

- 6000 - 8000
- 4000 - 6000
- 2000 - 4000
- 0 - 2000

0 2 4 6 8 10 Kilometers

1:200000

Code	District Name
1	ADALAR
2	AVCILAR
3	BAĞÇELİEVLER
4	BAKIRKÖY
5	BAGCILAR
6	BEYOĞLU
7	BEYOĞLU
8	BESIKTAS
9	BÜYÜKÇEKMECE
10	BAYRAMPAŞA
11	EMİRHANCI
12	EMİRHANCI
13	EYÜP
14	FATİH
15	GÜNGÖREN
16	GAZİOSMANPAŞA
17	KADIKÖY
18	KANTAL
19	KAGITHANE
20	KÜÇÜKÇEKMECE
21	MALTEPE
22	PEŞKİP
23	SARIER
24	SİĞİR
25	SİĞİR
26	SİĞİR
27	TUZLA
28	ÜSKÜDAR
29	ÜSKÜDAR
30	ÜSKÜDAR
31	ÜSKÜDAR
32	ÜSKÜDAR
901	ESENLER
902	ÇATALCA
903	ÇATALCA
904	SİLİVRİ

THE STUDY ON A DISASTER PREVENTION / MITIGATION BASIC PLAN IN ISTANBUL INCLUDING SEISMIC MICROZONATION IN THE REPUBLIC OF TURKEY

Istanbul Metropolitan Municipality (IMM)  
Japan International Cooperation Agency (JICA)

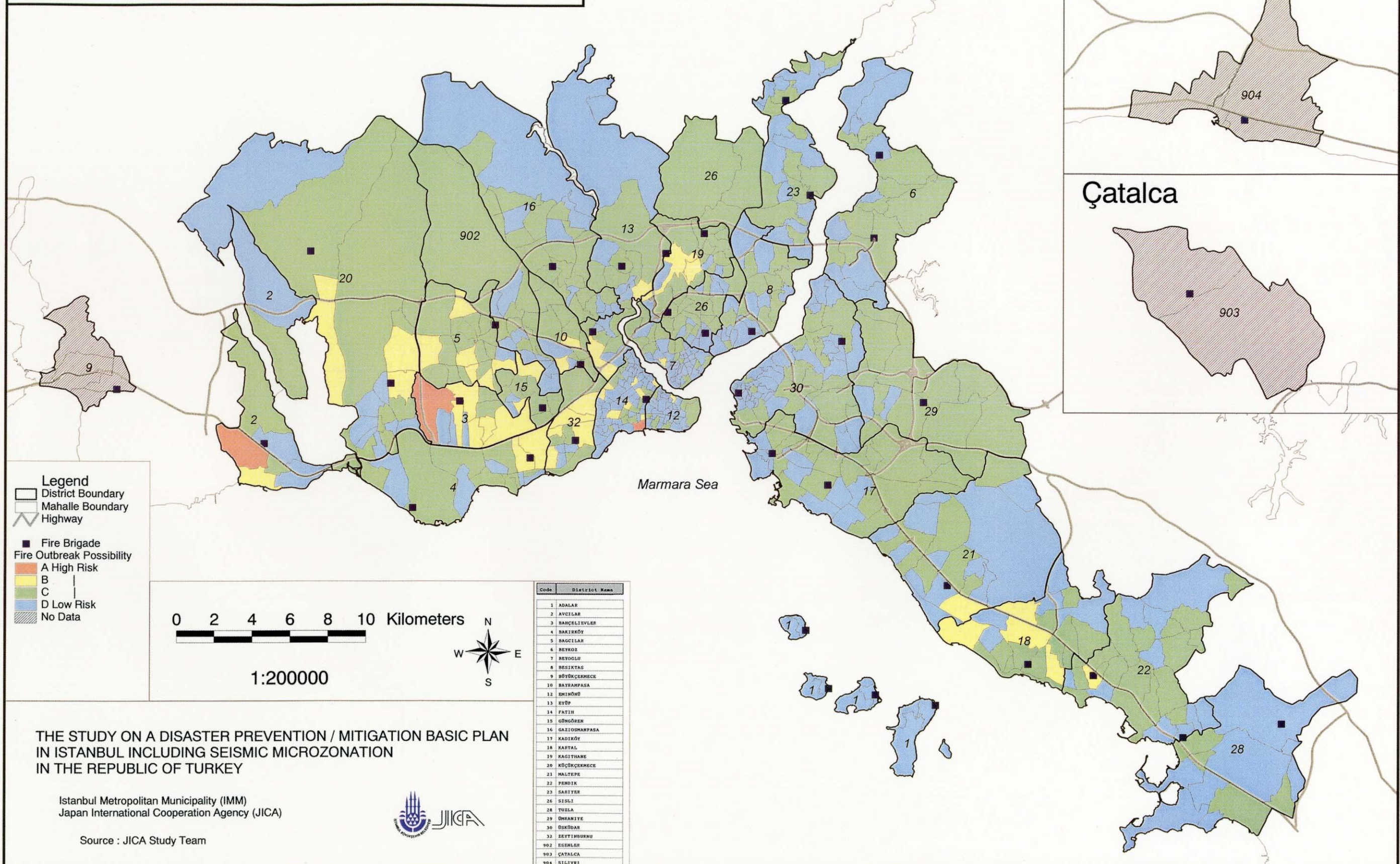


Source : JICA Study Team



# Fire Outbreak Possibility : Model C

Yangin Çıkma Olasiligi : Model C



**Legend**

- District Boundary
- Mahalle Boundary
- ▬ Highway
- Fire Brigade

**Fire Outbreak Possibility**

- A High Risk
- B
- C
- D Low Risk
- No Data

0 2 4 6 8 10 Kilometers

1:200000

Code	District Name
1	ADALAR
2	AVCIĞAR
3	BAĞÇELİEVLER
4	BAKIRKÖY
5	BAGCILAR
6	BEYKOZ
7	BEYOĞLU
8	BESIKTAS
9	BÜYÜKÇEKMECE
10	BAYRAMPAŞA
11	BEŞİKTAŞ
12	EMİRHÖNÜ
13	EYÜP
14	FATİH
15	GÖNÜSÖK
16	GAZİOSMANPAŞA
17	KADIKÖY
18	KARPAZ
19	KAGITHANE
20	KÜÇÜKÇEKMECE
21	HALTPE
22	PENDEK
23	SARIER
24	SİĞIRCI
25	SİĞIRCI
26	SİĞIRCI
27	TUZLA
28	ÜSKÜDAR
29	ÜSKÜDAR
30	ÜSKÜDAR
31	ÜSKÜDAR
32	ÜSKÜDAR
902	ESENLER
903	ÇATALCA
904	SİLİVRİ

THE STUDY ON A DISASTER PREVENTION / MITIGATION BASIC PLAN  
IN ISTANBUL INCLUDING SEISMIC MICROZONATION  
IN THE REPUBLIC OF TURKEY

Istanbul Metropolitan Municipality (IMM)  
Japan International Cooperation Agency (JICA)



Source : JICA Study Team