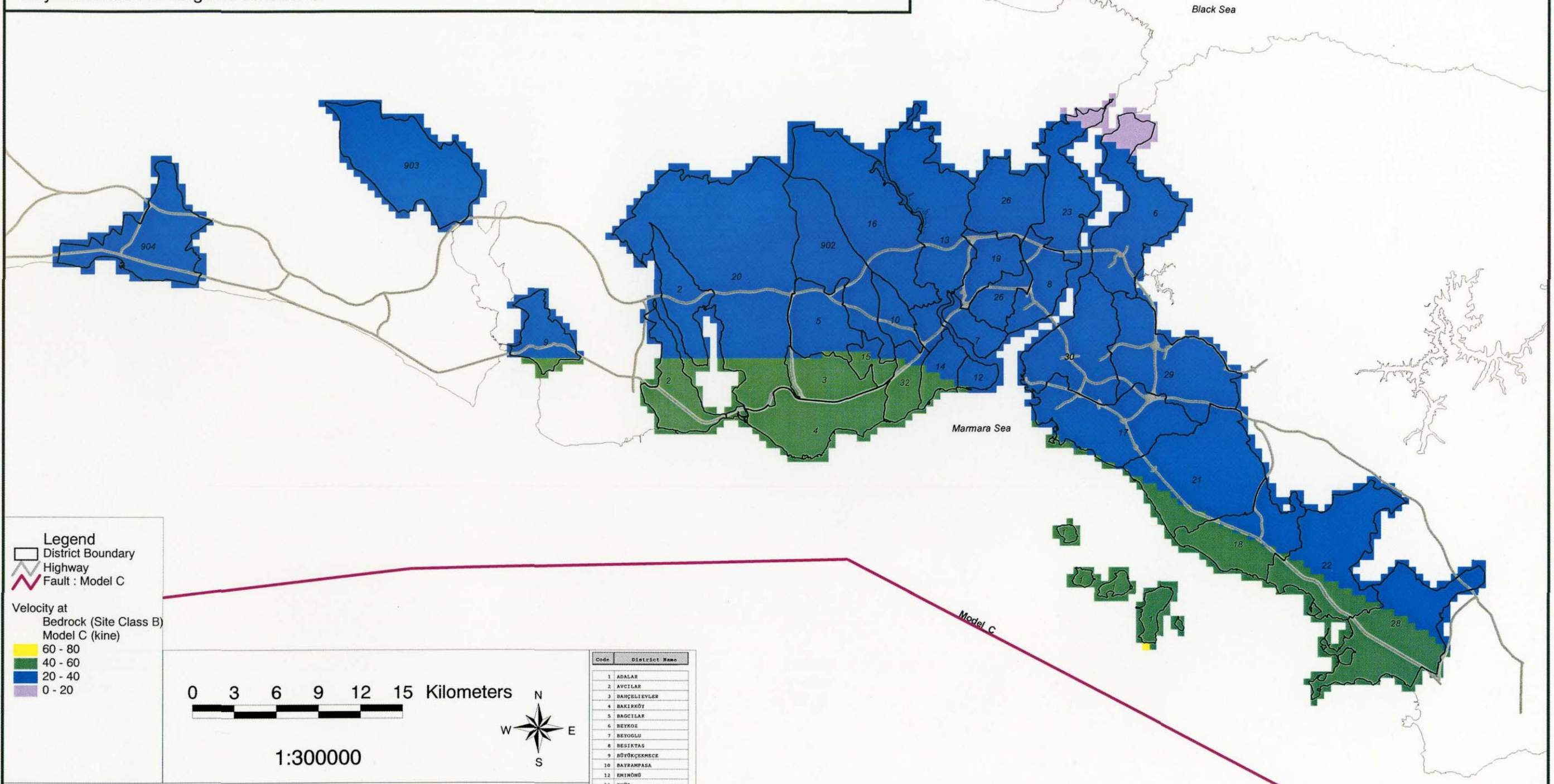


Distribution of Velocity at Bedrock : Model C

Kayazeminde Hiz Dagilimi : Model C



Legend

- District Boundary
- Highway
- Fault : Model C

Velocity at Bedrock (Site Class B) Model C (kine)

- 60 - 80
- 40 - 60
- 20 - 40
- 0 - 20

0 3 6 9 12 15 Kilometers

1:300000

Code	District Name
1	ADALAR
2	AVCILAR
3	BANÇELIYERLER
4	BAKIRKÖY
5	BAGCILAR
6	BEYKÖS
7	BEYOĞLU
8	BESIKTAS
9	BÜYÜKÇEKMECE
10	BAVRANPASA
12	EMIRÖNE
13	EYÜP
14	FATİH
15	GÜNGÖREN
16	GARİBİHANPASA
17	KADIKÖY
18	KARTAL
19	KAGITHANE
20	KÜÇÜKÇEKMECE
21	MALTEPE
22	PENDEK
23	SARIER
24	SİSİLİ
28	TUZLA
29	ÜSKÜDAR
30	ÜSKÜDAR
32	ZEYTİRBURNU
902	ESENLER
903	ÇATALCA
904	SİLİVRİ

THE STUDY ON A DISASTER PREVENTION / MITIGATION BASIC PLAN IN ISTANBUL INCLUDING SEISMIC MICROZONATION IN THE REPUBLIC OF TURKEY

Istanbul Metropolitan Municipality (IMM)
Japan International Cooperation Agency (JICA)

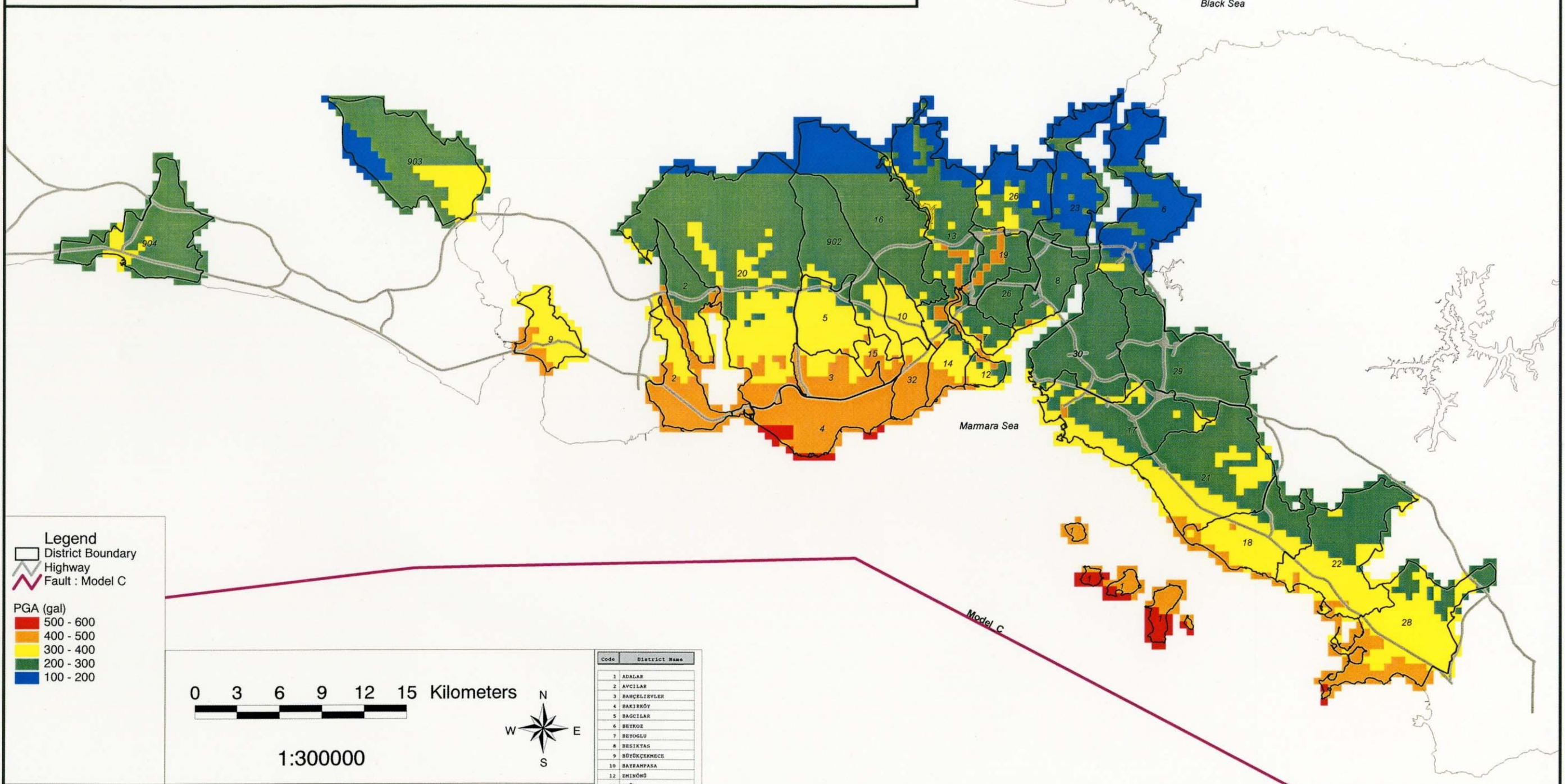


Source : JICA Study Team

B-11 Distribution of Velocity at Bedrock: Model C

Distribution of Peak Ground Acceleration : Model C

En Yüksek Zemin Ivmesi Dagilimi : Model C



Legend

- District Boundary
- Highway
- Fault : Model C

PGA (gal)

- 500 - 600
- 400 - 500
- 300 - 400
- 200 - 300
- 100 - 200

0 3 6 9 12 15 Kilometers

1:300000

Code	District Name
1	ADALAR
2	AVCILAR
3	BANÇELİEVLER
4	BAKIRKÖY
5	BAGCILAR
6	BEYOĞLU
7	BEYOĞLU
8	BEŞİKTAŞ
9	BÜYÜKÇEKİRMECE
10	BAĞCISANPAŞA
11	EMİRHANCI
12	EMİRHANCI
13	EYÜP
14	FATİH
15	ĞNÜDÜREK
16	GAZİOSMANPAŞA
17	KADIKÖY
18	KARTAL
19	KAGITHANE
20	KÜÇÜKÇEKİRMECE
21	HALTPE
22	FENİK
23	SAKİYER
24	SİSLİ
25	TUZLA
26	ÜMRANİYE
27	ÜSKÜDAR
28	ZEYTİNLİK
29	ESENER
30	ÇATALCA
31	SİLİVRİ

THE STUDY ON A DISASTER PREVENTION / MITIGATION BASIC PLAN
IN ISTANBUL INCLUDING SEISMIC MICROZONATION
IN THE REPUBLIC OF TURKEY

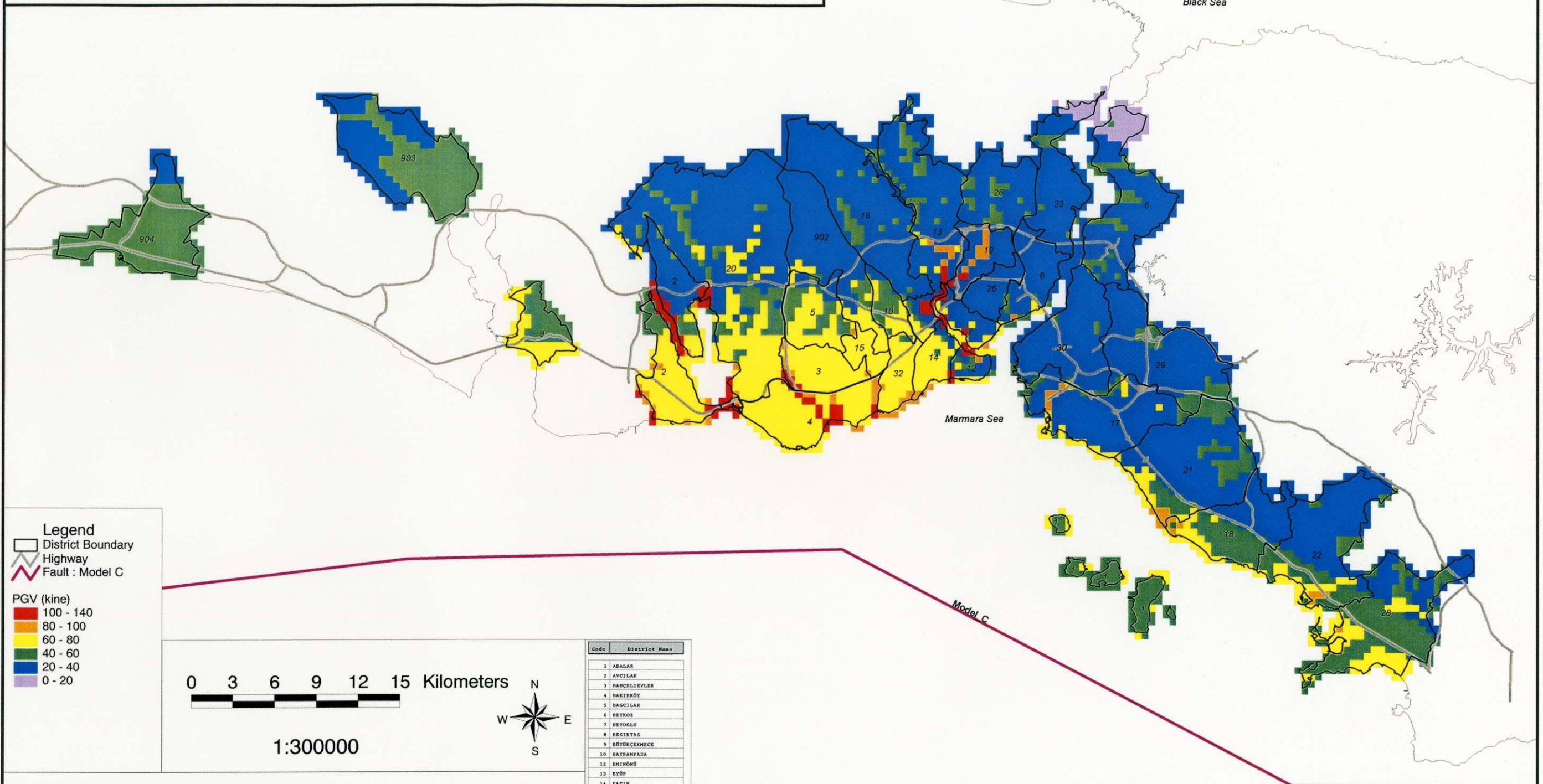
Istanbul Metropolitan Municipality (IMM)
Japan International Cooperation Agency (JICA)



Source : JICA Study Team

Distribution of Peak Ground Velocity : Model C

En Yüksek Zemin Hizi Dağılımı : Model C



Legend

- District Boundary
- Highway
- Fault : Model C

PGV (kine)

- 100 - 140
- 80 - 100
- 60 - 80
- 40 - 60
- 20 - 40
- 0 - 20

0 3 6 9 12 15 Kilometers

1:300000

Code	District Name
1	ADALAR
2	AVCILAR
3	BAHÇELİEVLER
4	BAKIRKÖY
5	BAĞCILAR
6	BEYKOZ
7	BEYOĞLU
8	BESİKTAS
9	BÜYÜKÇEKMECE
10	BAYRAMPAŞA
12	EMİRÖNE
13	EYÜP
14	FATİH
15	GÖNÜŞEN
16	GARİBİPAŞA
17	KADIKÖY
18	KARTAL
19	KAĞITHANE
20	KÜÇÜKÇEKMECE
21	HALIÇEPE
22	PENDEK
23	SARIER
26	SİSİLİ
28	TUZLA
29	ÜSKÜDAR
30	ÖSKÖDAR
32	ZETTİNDÖRNE
902	ESENLER
903	ÇATALCA
904	SİLİVRİ

THE STUDY ON A DISASTER PREVENTION / MITIGATION BASIC PLAN
IN ISTANBUL INCLUDING SEISMIC MICROZONATION
IN THE REPUBLIC OF TURKEY

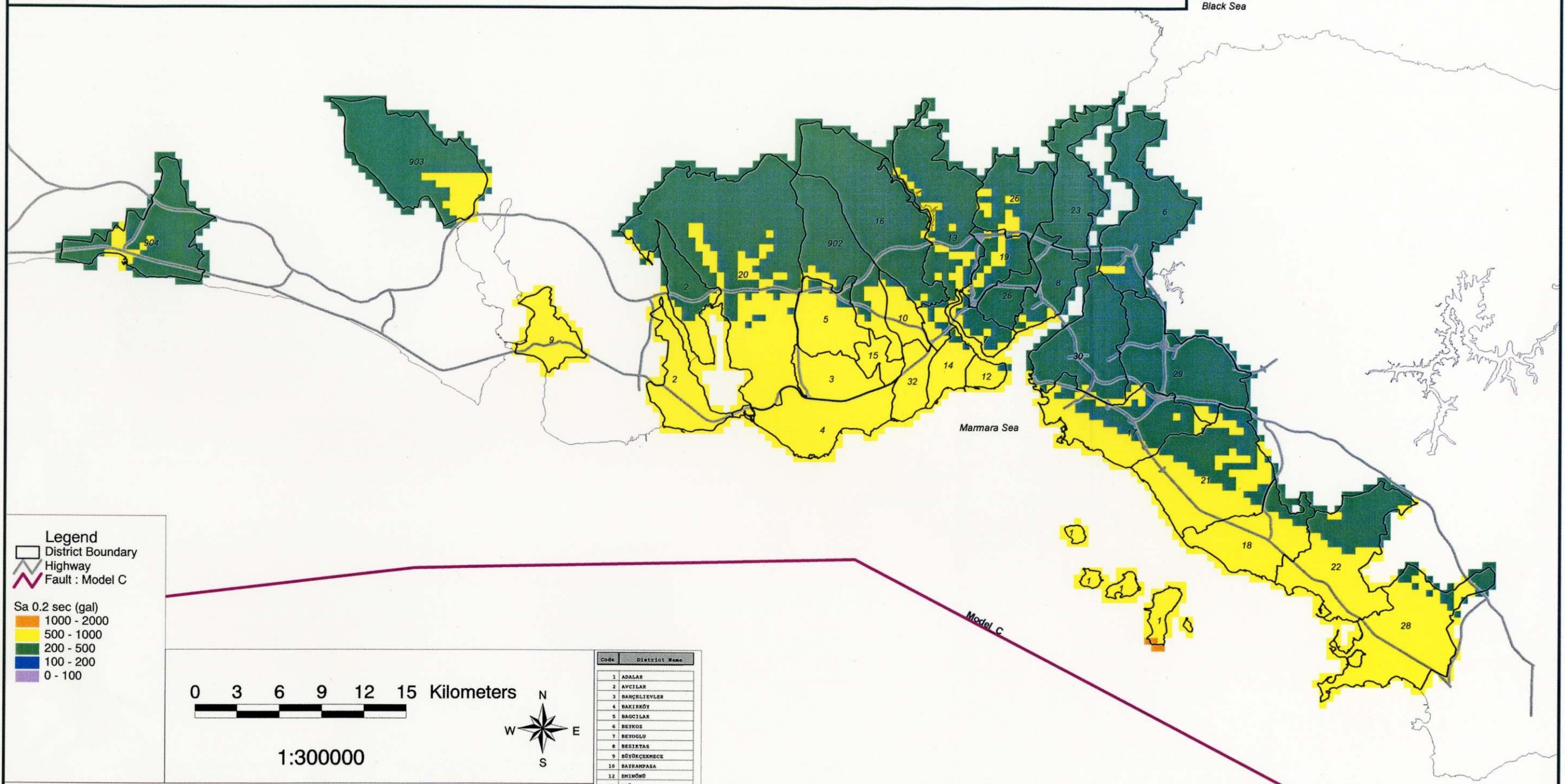
Istanbul Metropolitan Municipality (IMM)
Japan International Cooperation Agency (JICA)



Source : JICA Study Team

Distribution of Acceleration Response Spectrum (0.2 sec) : Model C

İvme Tepki Spektrumu (0.2 sn.) Dağılımı : Model C

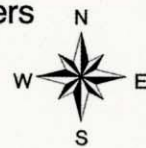


Legend
 □ District Boundary
 ≡ Highway
 ≡ Fault : Model C

Sa 0.2 sec (gal)
 1000 - 2000
 500 - 1000
 200 - 500
 100 - 200
 0 - 100

0 3 6 9 12 15 Kilometers

1:300000



Code	District Name
1	ADALAR
2	AVCILAR
3	BAHÇELİEVLER
4	BAKIRKÖY
5	BAGCILAR
6	BEYKÖZ
7	BEYOĞLU
8	BESİKTAŞ
9	BÜYÜKÇEKMECE
10	BAĞRAMPAŞA
11	...
12	EMİNGÖZ
13	EYÜP
14	FATİH
15	ĞİĞİRGEN
16	GARİPOVA
17	KADIKÖY
18	KARTAL
19	KAGITHANE
20	KÜÇÜKÇEKMECE
21	MALTEPE
22	PENİK
23	SARIER
24	...
25	...
26	SİĞİ
27	...
28	TUZLA
29	ÜMRANİYE
30	ÜSKÜDAR
31	...
32	ZETTİNBURNU
902	ESELER
903	ÇATALCA
904	SİLİVRİ

THE STUDY ON A DISASTER PREVENTION / MITIGATION BASIC PLAN
 IN ISTANBUL INCLUDING SEISMIC MICROZONATION
 IN THE REPUBLIC OF TURKEY

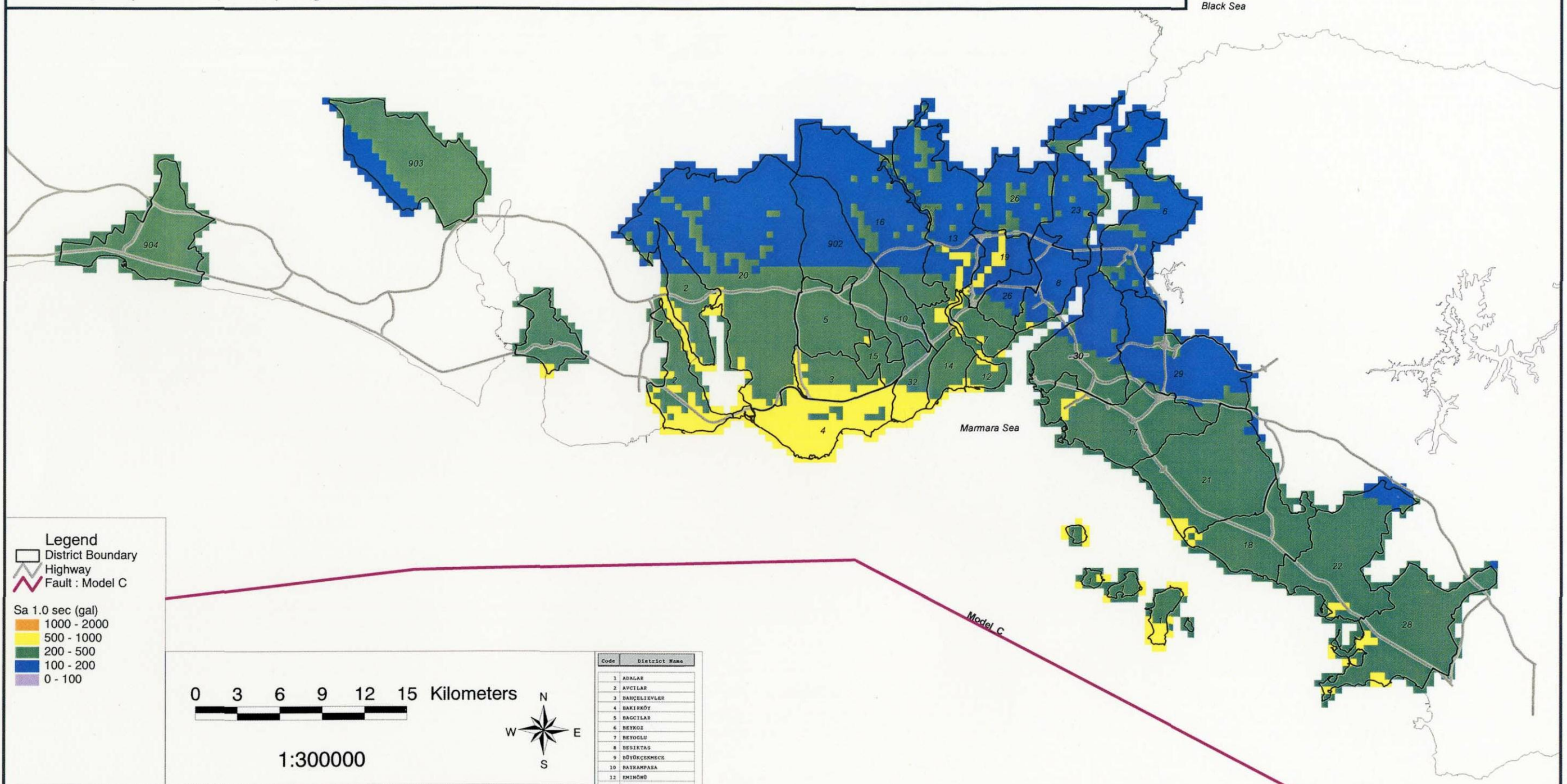
Istanbul Metropolitan Municipality (İMM)
 Japan International Cooperation Agency (JICA)



Source : JICA Study Team

Distribution of Acceleration Response Spectrum (1.0 sec) : Model C

Ivme Tepki Spektrumu (1.0 sn.) Dagilimi : Model C



Legend

- District Boundary
- Highway
- Fault : Model C

Sa 1.0 sec (gal)

- 1000 - 2000
- 500 - 1000
- 200 - 500
- 100 - 200
- 0 - 100

0 3 6 9 12 15 Kilometers

1:300000

Code	District Name
1	ADALAR
2	AVCILAR
3	BANÇELİEVLER
4	BAKIRKÖY
5	BAGCILAR
6	BEYKOZ
7	BEYOĞLU
8	BESIKTAS
9	BÜYÜKÇEKMECE
10	BAŞAKFASA
11	EMİNOĞU
12	EYÜP
13	FATİH
14	GÜNGÖREN
15	GAZIOSMANPAŞA
16	KADIKÖY
17	KARTAL
18	KAGITÇANE
19	KÜÇÜKÇEKMECE
20	HALTPE
21	PENDEK
22	SARIYER
23	SİSLİ
24	TUZLA
25	ŞİRANLI
26	OSKODAR
27	ZETTİNSUURU
28	ESENLER
29	ÇATALCA
30	SİLİVRİ

THE STUDY ON A DISASTER PREVENTION / MITIGATION BASIC PLAN
IN ISTANBUL INCLUDING SEISMIC MICROZONATION
IN THE REPUBLIC OF TURKEY

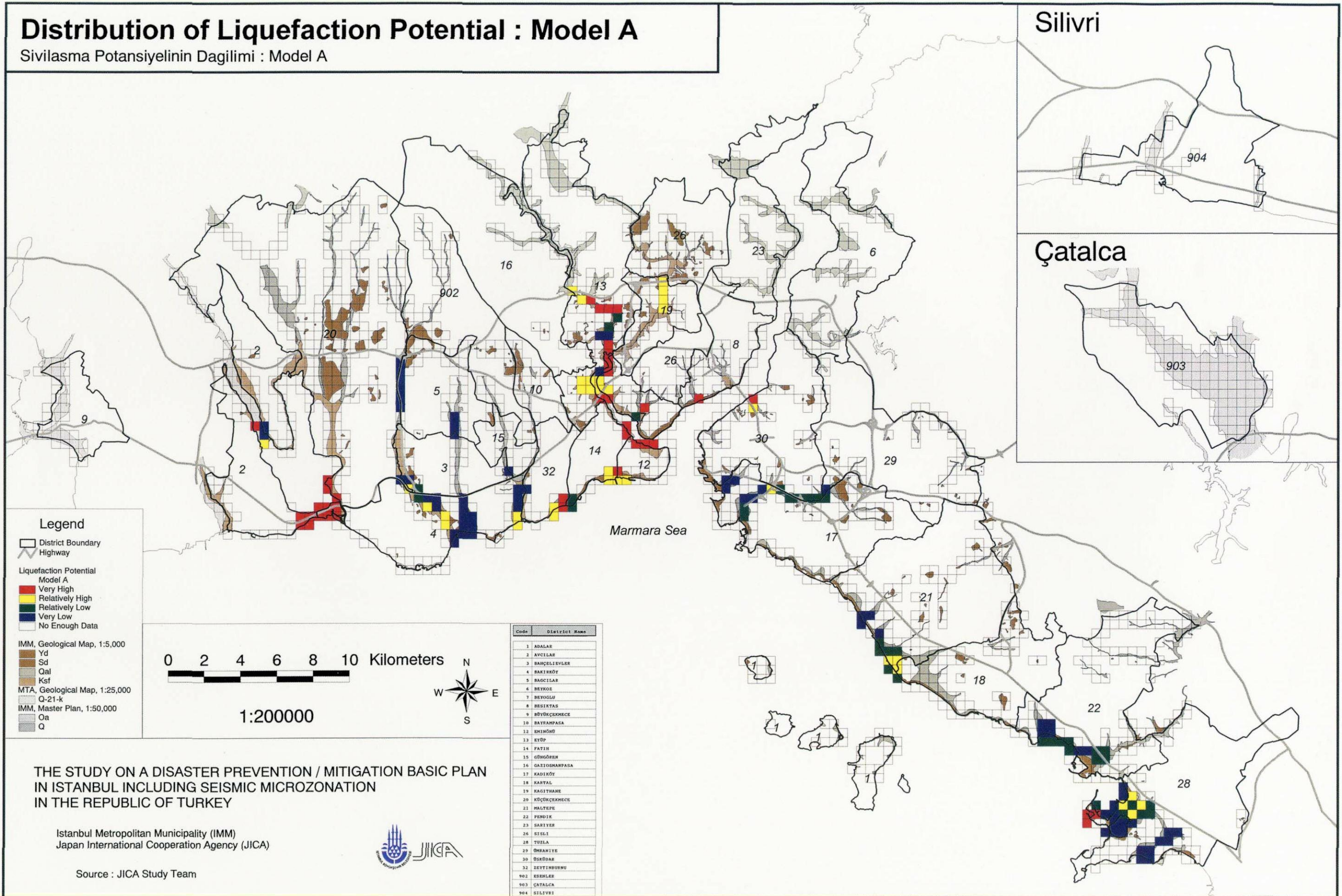
Istanbul Metropolitan Municipality (IMM)
Japan International Cooperation Agency (JICA)



Source : JICA Study Team

Distribution of Liquefaction Potential : Model A

Sivilasma Potansiyelinin Dagilimi : Model A



Legend

- District Boundary
- Highway

Liquefaction Potential Model A

- Very High
- Relatively High
- Relatively Low
- Very Low
- No Enough Data

IMM, Geological Map, 1:5,000

Yd

Sd

Qal

Ksf

MTA, Geological Map, 1:25,000

Q-21-k

IMM, Master Plan, 1:50,000

Oa

Q

0 2 4 6 8 10 Kilometers

1:200000



Code	District Name
1	ADALAR
2	AVCILAR
3	BANÇELİEVLER
4	BAKIRKÖY
5	BACILAR
6	BEYKÖE
7	BEYOGLU
8	BESIKTAS
9	BÜYÜKÇEKMECE
10	BAYRAKPASA
11	EMİNONU
12	EYÜP
13	FATİH
14	GÖĞÜSÖEN
15	GAZİOSMANPASA
16	KADIKÖY
17	KARTAL
18	KAGITHANE
19	KÜÇÜKÇEKMECE
20	MALTEPE
21	FENİCİK
22	SARIER
23	SİSİ
24	TUZLA
25	ÖMERANIE
26	ÜSKÜDAR
27	ZETTİNBURNU
902	ESENLER
903	ÇATALCA
904	SILIVRI

THE STUDY ON A DISASTER PREVENTION / MITIGATION BASIC PLAN IN ISTANBUL INCLUDING SEISMIC MICROZONATION IN THE REPUBLIC OF TURKEY

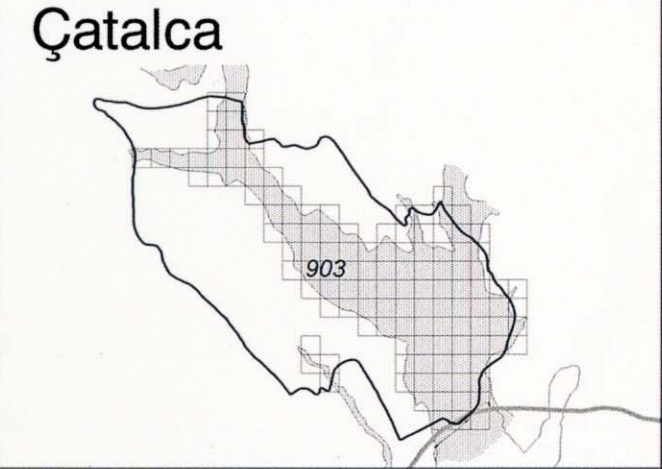
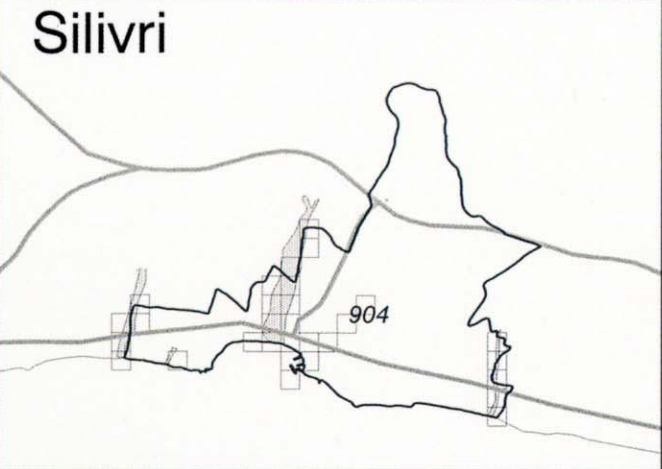
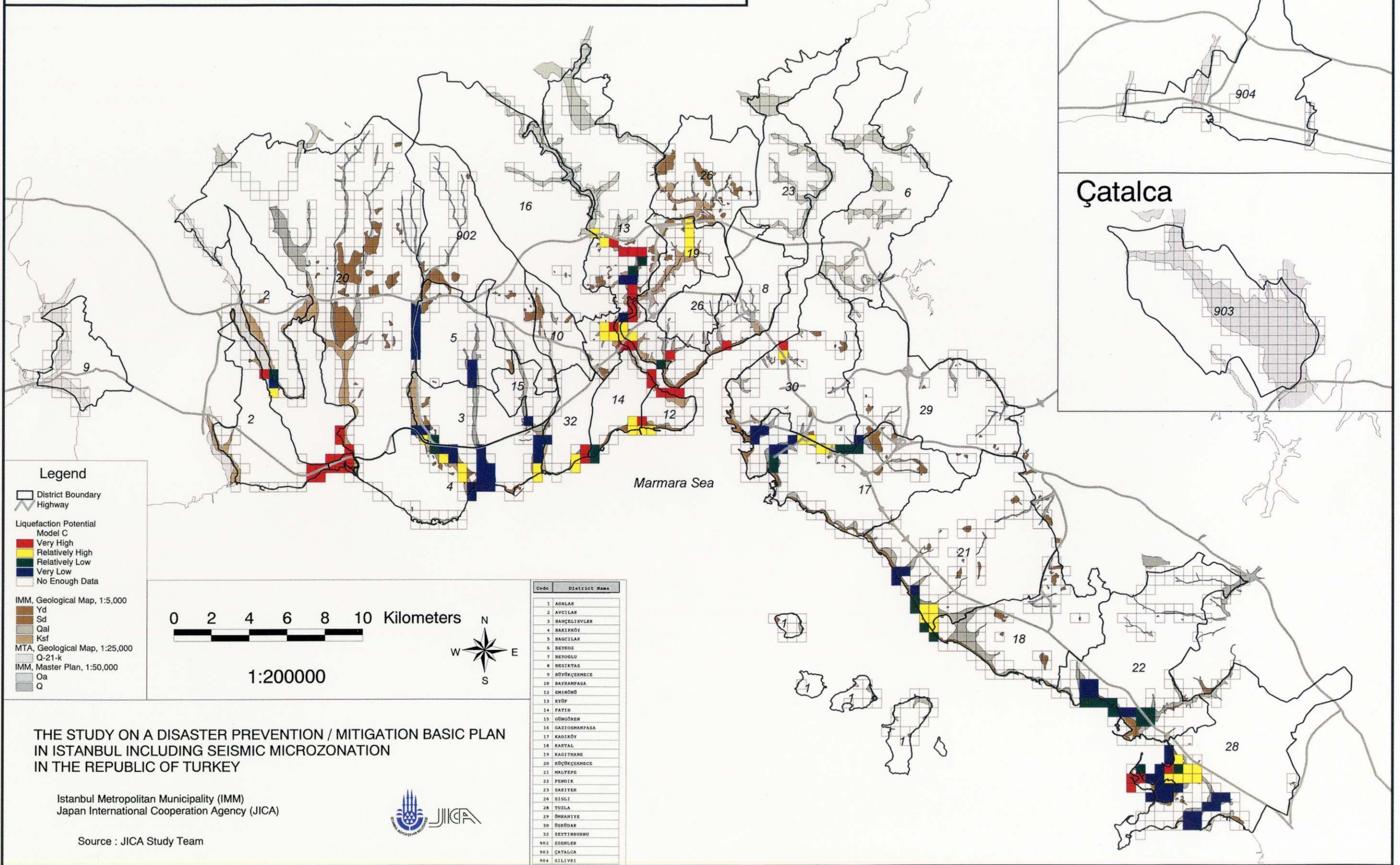
Istanbul Metropolitan Municipality (IMM)
Japan International Cooperation Agency (JICA)



Source : JICA Study Team

Distribution of Liquefaction Potential : Model C

Sivilasma Potansiyelinin Dagilimi : Model C



Legend

- District Boundary
- Highway

Liquefaction Potential Model C

- Very High
- Relatively High
- Relatively Low
- Very Low
- No Enough Data

IMM, Geological Map, 1:5,000

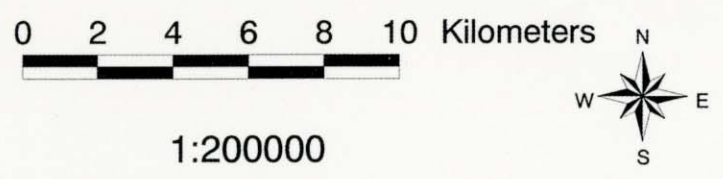
- Yd
- Sd
- Qal
- Ksf

MTA, Geological Map, 1:25,000

- Q-21-k

IMM, Master Plan, 1:50,000

- Oa
- Q



Code	District Name
1	ADALAR
2	AVCILAR
3	BANÇLILIVLER
4	BAKIRKÖY
5	BAGCILAR
6	BEYOĞLU
7	BEYOĞLU
8	BEŞİKTAŞ
9	BÜYÜKÇEKMECE
10	BAĞRAMPAŞA
11	EMİRÖNE
12	EMİRÖNE
13	EYÜP
14	FATİH
15	GÜNGÖREN
16	GAZİOSMANPAŞA
17	KADIKÖY
18	KARTAL
19	KAGITHANE
20	KÜÇÜKÇEKMECE
21	HALTPE
22	PENDİK
23	SARIER
24	SİĞİ
25	TUZLA
26	ÖRSANLIYE
27	ÖRSANLIYE
28	ÖRSANLIYE
29	ÖRSANLIYE
30	ÖRSANLIYE
31	ÖRSANLIYE
32	ÖRSANLIYE
902	ESENLER
903	ÇATALCA
904	SILIVRI

THE STUDY ON A DISASTER PREVENTION / MITIGATION BASIC PLAN IN ISTANBUL INCLUDING SEISMIC MICROZONATION IN THE REPUBLIC OF TURKEY

Istanbul Metropolitan Municipality (IMM)
Japan International Cooperation Agency (JICA)

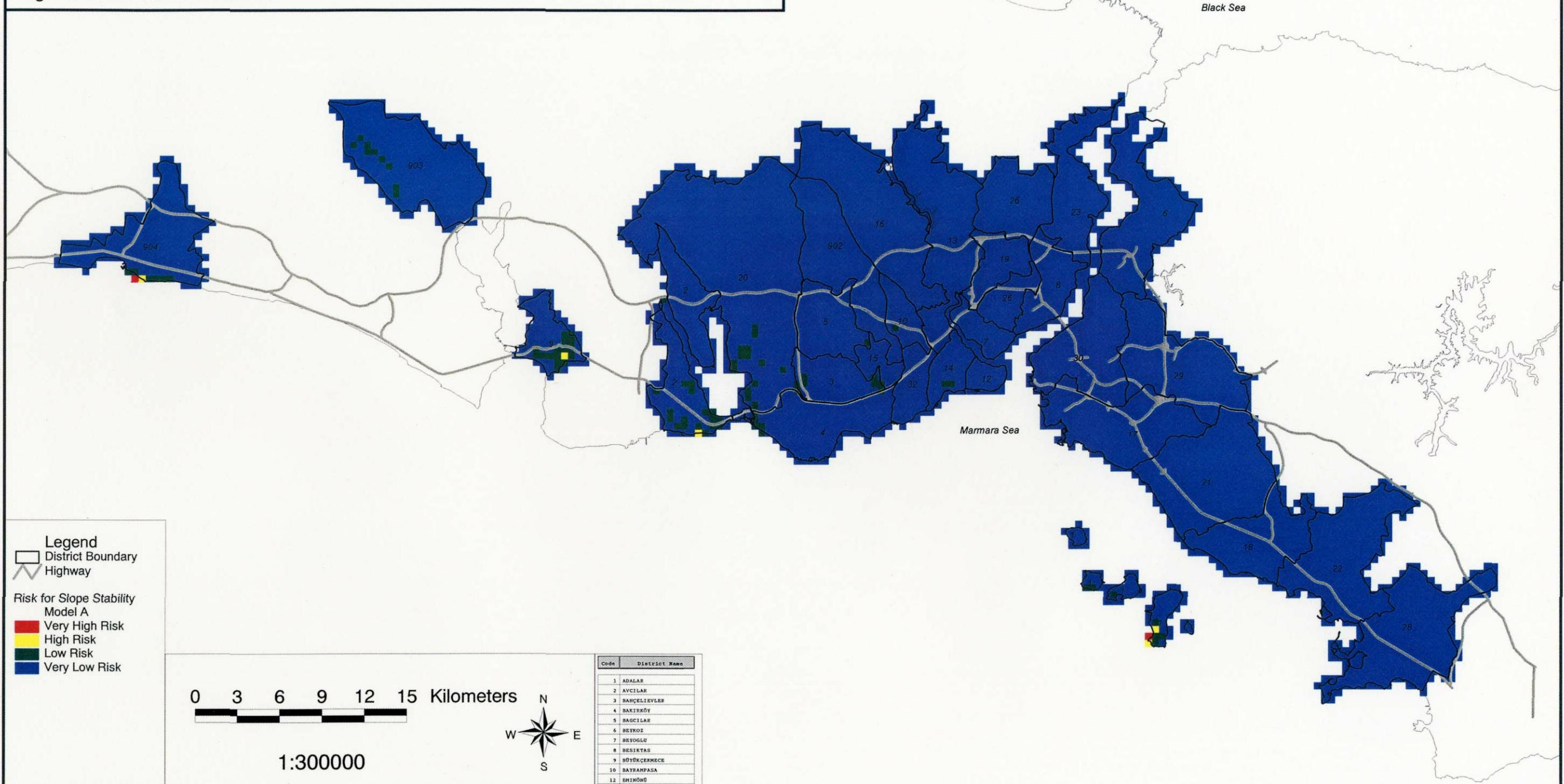


Source : JICA Study Team

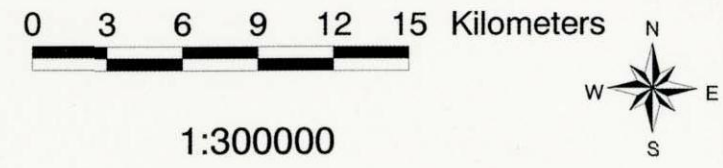
B-17 Distribution of Liquefaction Potential: Model C

Risk for Slope Stability : Model A

Egim Stabilite Riski : Model A



Legend
 □ District Boundary
 ≡ Highway
Risk for Slope Stability Model A
 ■ Very High Risk
 ■ High Risk
 ■ Low Risk
 ■ Very Low Risk



Code	District Name
1	ADALAR
2	AVCIĞAR
3	BANÇELİEVLER
4	BAKIRKÖY
5	BACILAR
6	BEYOĞ
7	BEYOĞLU
8	BESIKTAS
9	BÜYÜKÇERNECE
10	BAYRAMPAŞA
12	EMİRHÜ
13	EYÜP
14	FATİH
15	GÜNGÖREN
16	GAZİOSMANPAŞA
17	KADIKÖY
18	KARTAL
19	KAGITHANE
20	KÜÇÜKÇERNECE
21	MALTEPE
22	FENİCİ
23	SARİYER
24	SİĞİ
26	TUZLA
29	ÜSKÜDAR
30	ÜSKÜDAR
32	ZETTİNBURNU
902	ESENLER
903	ÇATALCA
904	SİLİVRİ

THE STUDY ON A DISASTER PREVENTION / MITIGATION BASIC PLAN
 IN ISTANBUL INCLUDING SEISMIC MICROZONATION
 IN THE REPUBLIC OF TURKEY

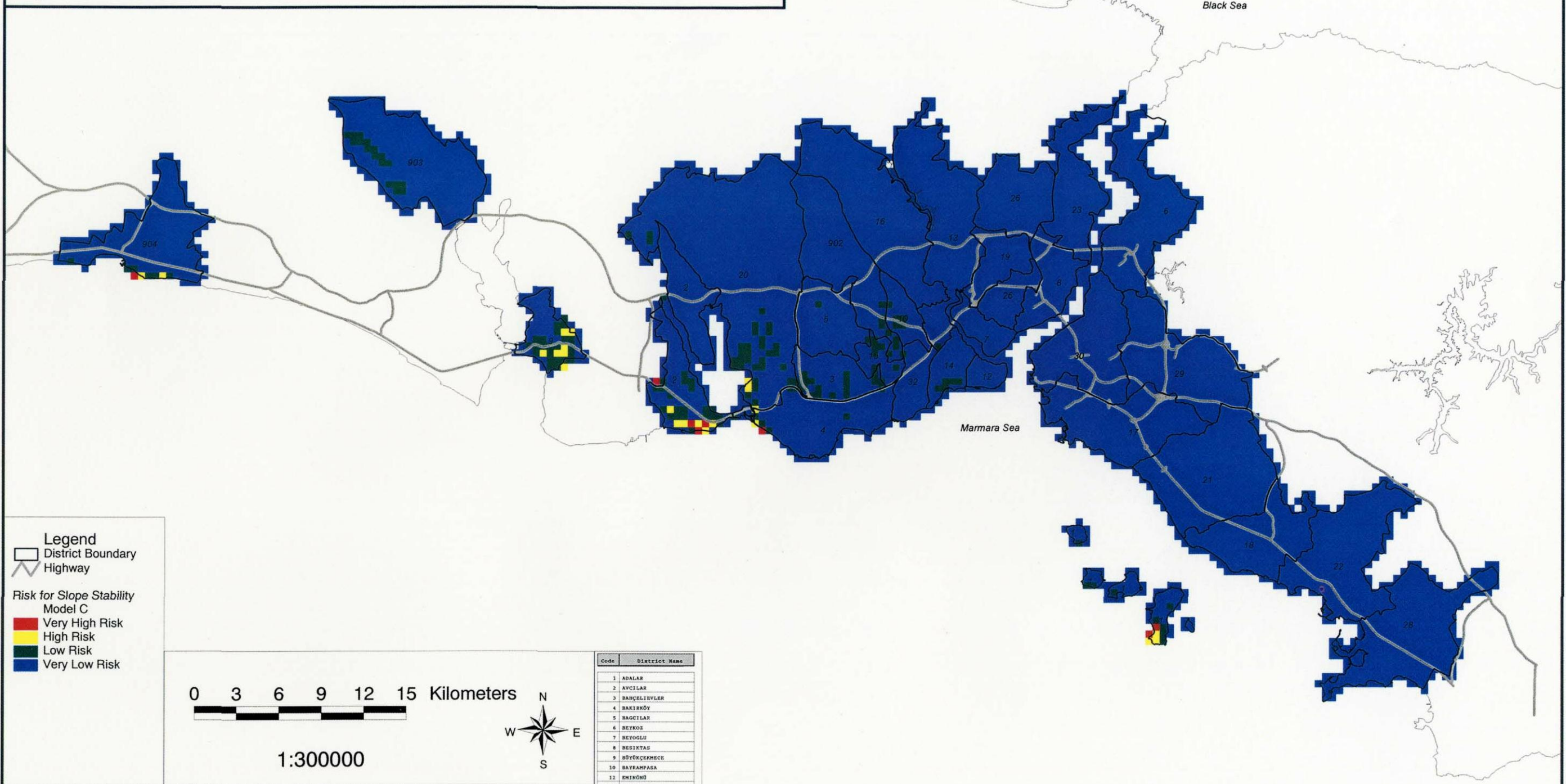
Istanbul Metropolitan Municipality (IMM)
 Japan International Cooperation Agency (JICA)



Source : JICA Study Team

Risk for Slope Stability : Model C

Eğim Stabilité Riski : Model C



Legend

- District Boundary
- Highway

Risk for Slope Stability Model C

- Very High Risk
- High Risk
- Low Risk
- Very Low Risk

0 3 6 9 12 15 Kilometers

1:300000

Code	District Name
1	ADALAR
2	AVCILAR
3	BANGELIEVLER
4	BAKIRKÖY
5	BAGCILAR
6	BEYKÖZ
7	BEYOĞLU
8	BESİKTAS
9	BÜYÜKÇEKMECE
10	BATILMAYSA
11	EMİRHÖNÜ
12	EYÜP
13	FATİH
14	FATİH
15	GÜNGÖRÜN
16	GAZİOSMANPAŞA
17	KADIKÖY
18	KARTAL
19	KAGITHANE
20	KÜÇÜKÇEKMECE
21	MALTEPE
22	PENİİK
23	SARILYER
24	SİSLİ
25	TUZLA
26	ÜMRANİYE
27	ÜSKÜDAR
28	ZEYTİNBURNU
902	ESENLER
903	ÇATALCA
904	SİLİVRİ

THE STUDY ON A DISASTER PREVENTION / MITIGATION BASIC PLAN
IN ISTANBUL INCLUDING SEISMIC MICROZONATION
IN THE REPUBLIC OF TURKEY

Istanbul Metropolitan Municipality (IMM)
Japan International Cooperation Agency (JICA)



Source : JICA Study Team