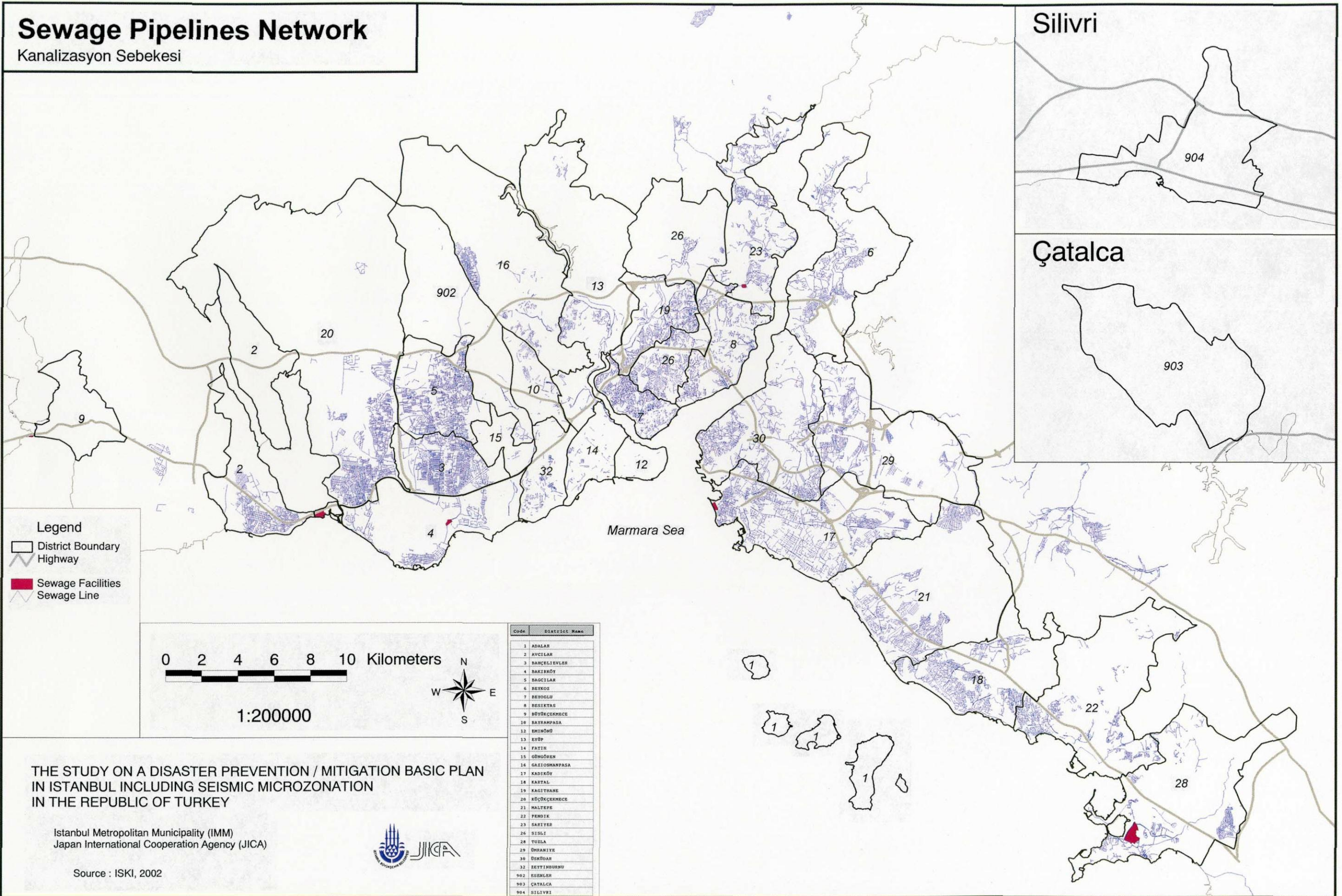


Sewage Pipelines Network

Kanalizasyon Sebekesi



Legend

- District Boundary
- Highway
- Sewage Facilities
- Sewage Line

0 2 4 6 8 10 Kilometers

1:200000



THE STUDY ON A DISASTER PREVENTION / MITIGATION BASIC PLAN
IN ISTANBUL INCLUDING SEISMIC MICROZONATION
IN THE REPUBLIC OF TURKEY

Istanbul Metropolitan Municipality (IMM)
Japan International Cooperation Agency (JICA)

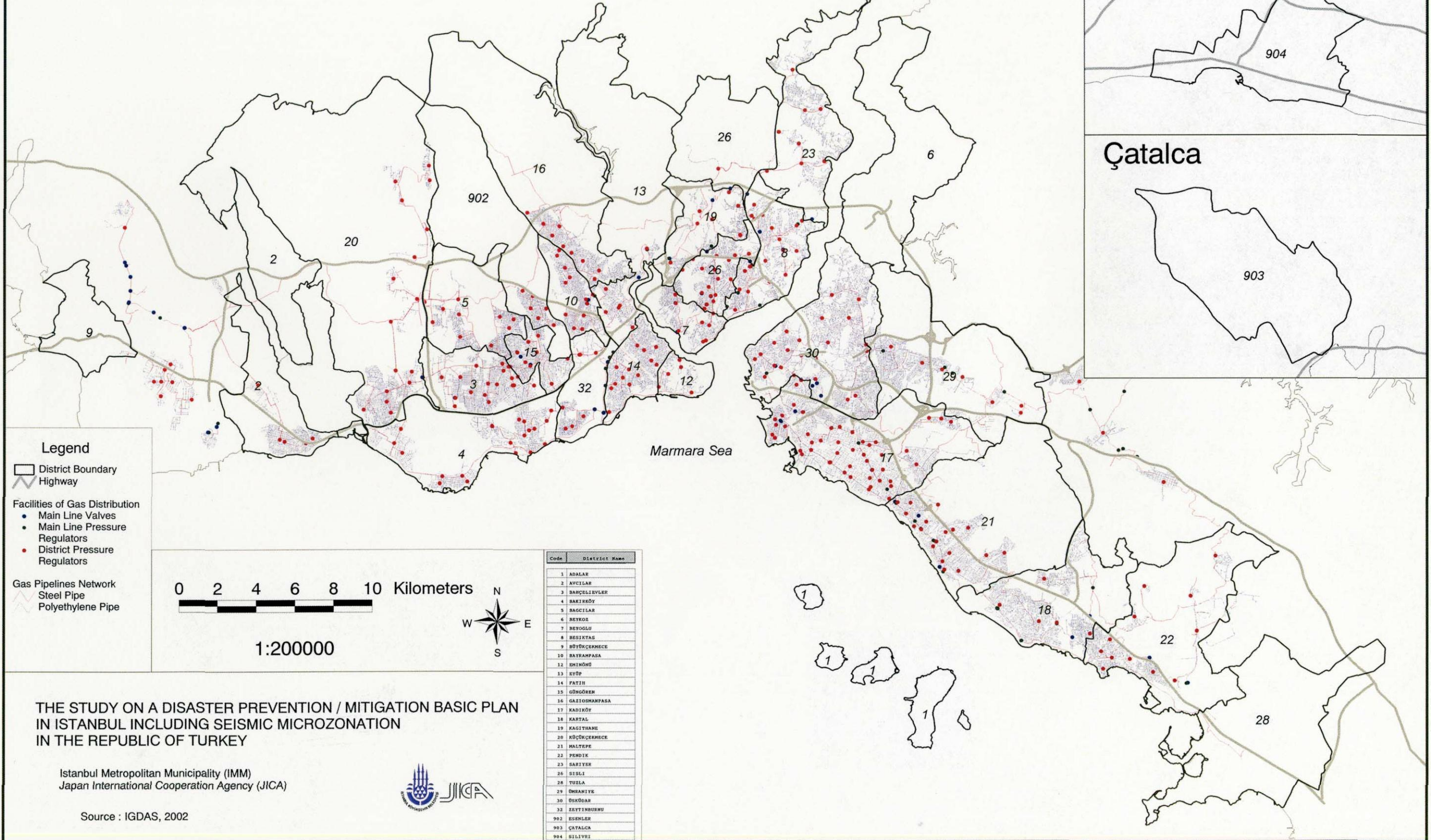


Source : ISKI, 2002

Code	District Name
1	ADALAR
2	AVCILAR
3	BAHÇELİEVLER
4	BAKIRKÖY
5	BAĞCILAR
6	BEYKÖZ
7	BEYOĞLU
8	BEŞİKTAŞ
9	BÜYÜKÇEKMECE
10	BAYRAHPAŞA
11	BHİNEĞİ
12	EYÜP
13	FATİH
14	FATİH
15	ĞNÜĞREN
16	GARİOSMANPAŞA
17	KADIKÖY
18	KARTAL
19	KAGITHANE
20	KÜÇÜKÇEKMECE
21	MALTEPE
22	PENDEK
23	SAĞIYER
24	SİĞİRCİ
25	SİĞİRCİ
26	SİĞİRCİ
27	TUZLA
28	ÜMRANİYE
29	ÜMRANİYE
30	ÜMRANİYE
31	ÜMRANİYE
32	ZEYTİNBURNU
902	ESENLER
903	ÇATALCA
904	SİLİVRİ

Natural Gas Pipelines Network

Dogal Gaz Sebekesi



THE STUDY ON A DISASTER PREVENTION / MITIGATION BASIC PLAN
IN ISTANBUL INCLUDING SEISMIC MICROZONATION
IN THE REPUBLIC OF TURKEY

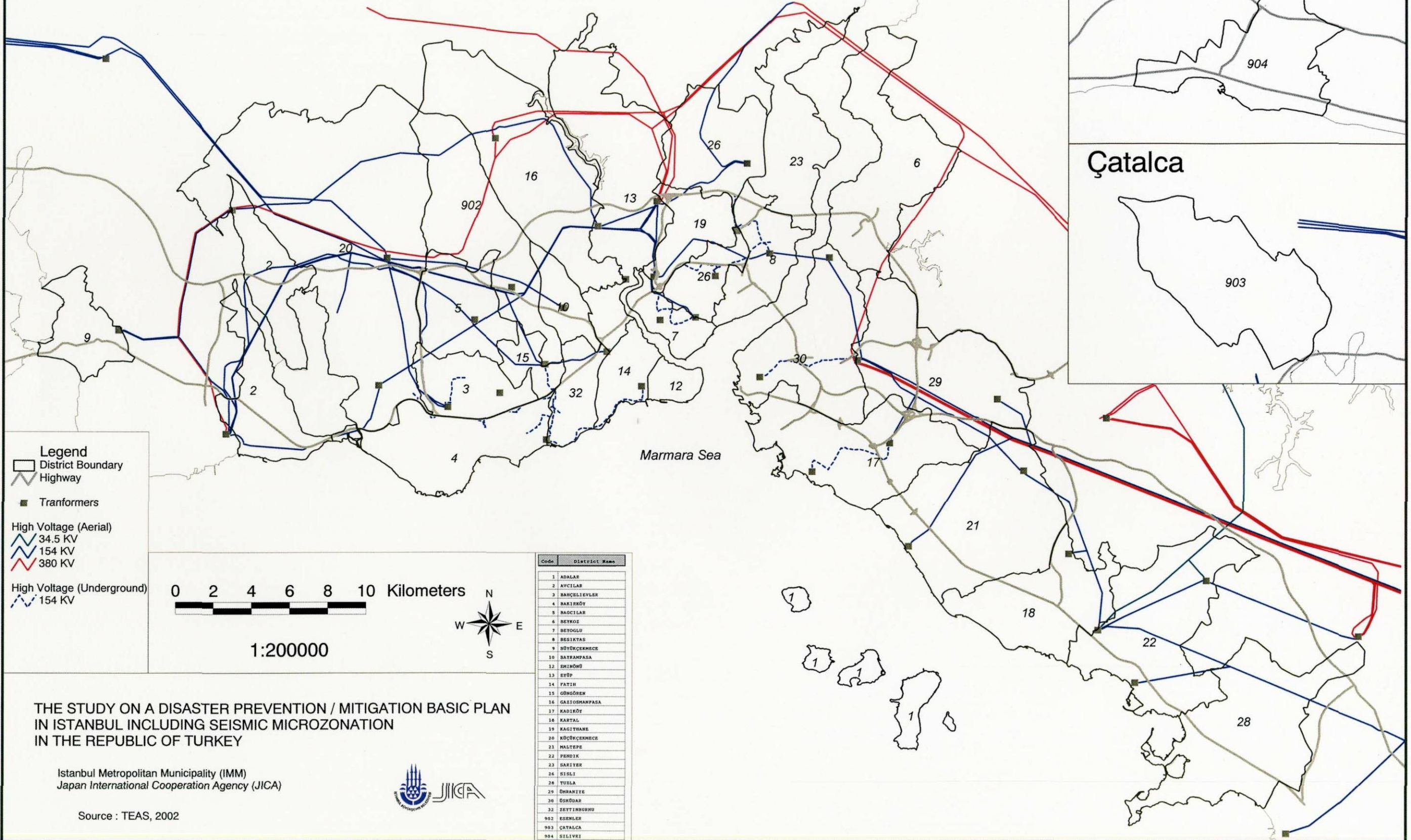
Istanbul Metropolitan Municipality (IMM)
Japan International Cooperation Agency (JICA)



Source : IGDAS, 2002

High Voltage Electricity Line Network

Yüksek Gerilim Elektrik Hatları



THE STUDY ON A DISASTER PREVENTION / MITIGATION BASIC PLAN
IN ISTANBUL INCLUDING SEISMIC MICROZONATION
IN THE REPUBLIC OF TURKEY

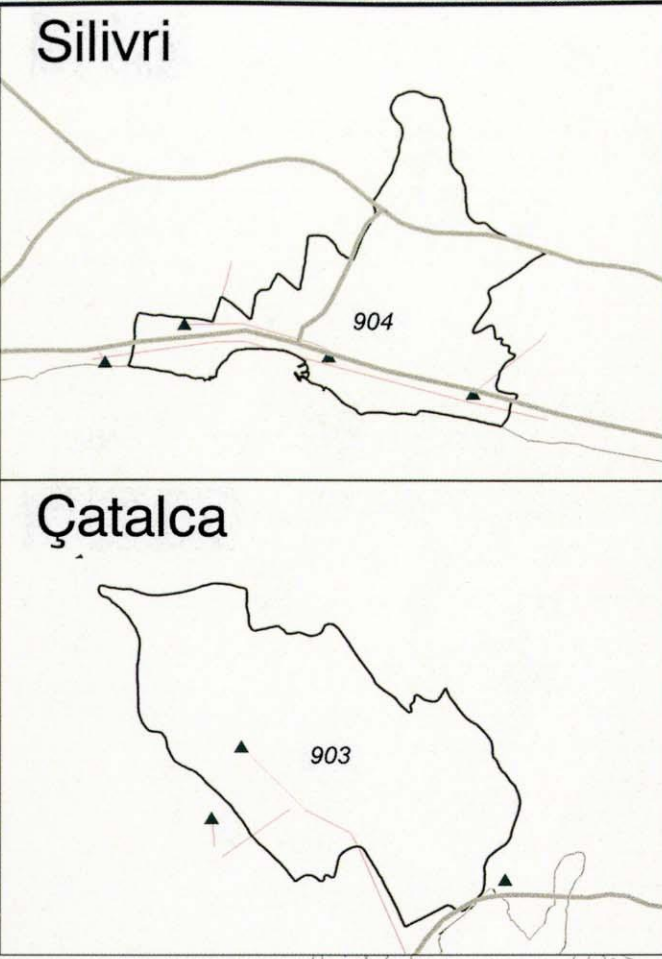
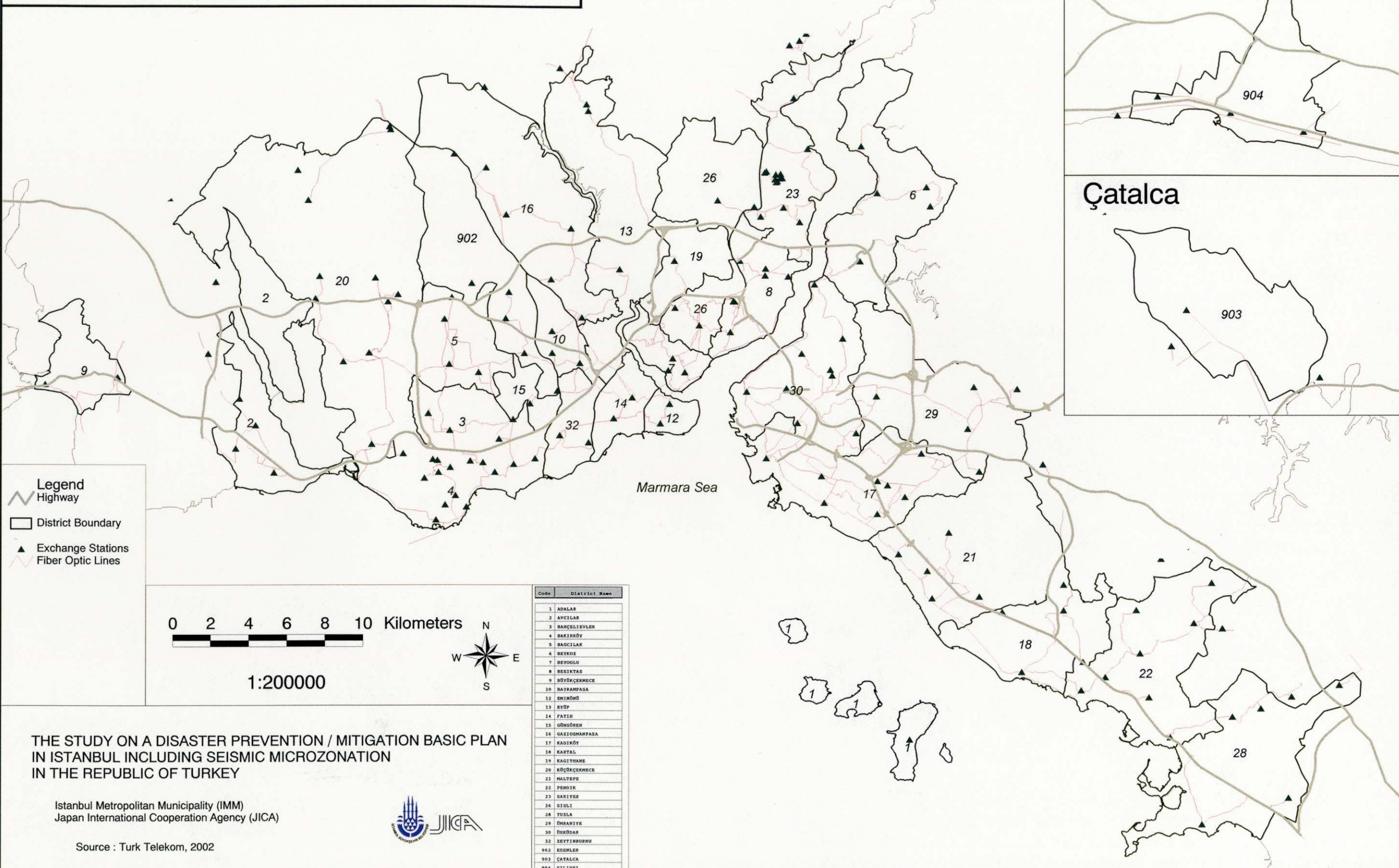
Istanbul Metropolitan Municipality (IMM)
Japan International Cooperation Agency (JICA)



Source : TEAS, 2002

Telecom Fiber Optic Lines Network

Telekom Fiber Optik Kablo Ağı



Legend
 Highway
 District Boundary
 Exchange Stations
 Fiber Optic Lines

0 2 4 6 8 10 Kilometers
 1:200000
 N
 W E
 S

Code	District Name
1	ADALAR
2	AVCILAR
3	BAĞÇELİEVLER
4	BAKIRÖY
5	BAGCILAR
6	BEYKOZ
7	BEYOĞLU
8	BESIKTAS
9	BÜYÜKÇEKMECE
10	BAYRAMPAŞA
11	EMİRHÜ
12	EYÜP
13	FATİH
14	GÖĞÜSÖEN
15	GARİBOHPAŞA
16	KADIKÖY
17	KARTAL
18	KAGITHANE
19	KÖÇÜKÇEKMECE
20	MALTEPE
21	PENDEK
22	SARIER
23	SİSİ
24	TUZLA
25	ÜMRANİYE
26	ÜSKÜDAR
27	ZETTİNHÜPNU
902	ESEMLER
903	ÇATALCA
904	SILIVRI

THE STUDY ON A DISASTER PREVENTION / MITIGATION BASIC PLAN
 IN ISTANBUL INCLUDING SEISMIC MICROZONATION
 IN THE REPUBLIC OF TURKEY

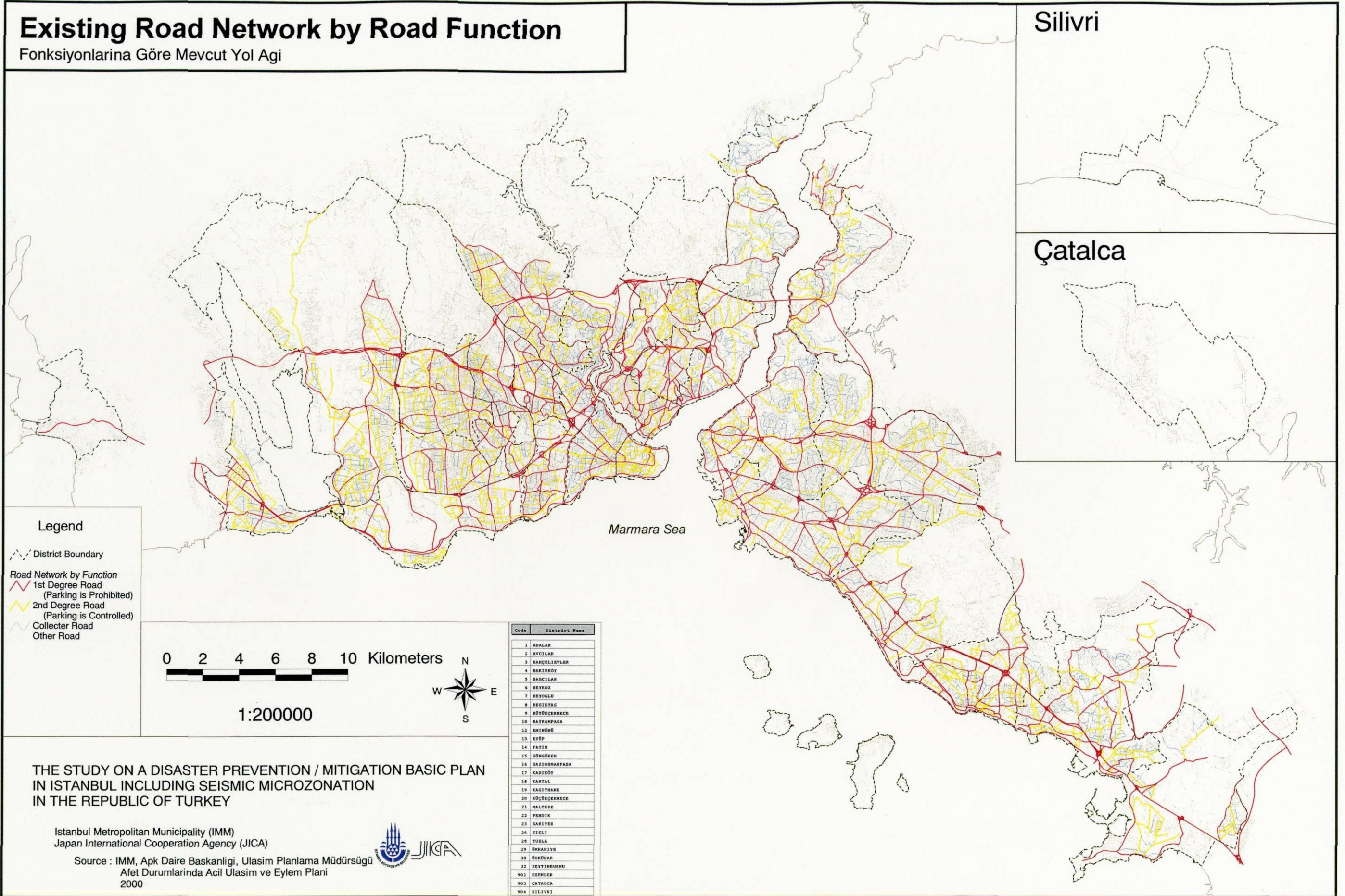
Istanbul Metropolitan Municipality (IMM)
 Japan International Cooperation Agency (JICA)



Source : Turk Telekom, 2002

Existing Road Network by Road Function

Fonksiyonlarına Göre Mevcut Yol Ağı



Silivri

Çatalca

Legend

- District Boundary
- Road Network by Function**
- 1st Degree Road
(Parking is Prohibited)
- 2nd Degree Road
(Parking is Controlled)
- Collector Road
- Other Road

0 2 4 6 8 10 Kilometers

1:200000



Code	District Name
1	ADALAR
2	AVCIĞAR
3	BAĞÇELİEVLER
4	BAKIRKÖY
5	BAGCILAR
6	BEYKOZ
7	BEYOĞLU
8	BESIKTAS
9	BÜYÜKÇEKMECE
10	BAYRAMPAŞA
11	ŞİŞLİ
12	ŞİŞLİ
13	ŞİŞLİ
14	FATİH
15	GÜNGÖR
16	GAZİOSMANPAŞA
17	KADIKÖY
18	KARTAL
19	KAGITHANE
20	KÜÇÜKÇEKMECE
21	MALTEPE
22	PENDİK
23	SARIER
24	SİSİLİ
25	TUZLA
26	ÜMRANİYE
27	ÜSKÜDAR
28	ZİYYİTBURNU
901	ESENLER
902	ÇATALCA
903	SİLİVRİ

THE STUDY ON A DISASTER PREVENTION / MITIGATION BASIC PLAN
IN ISTANBUL INCLUDING SEISMIC MICROZONATION
IN THE REPUBLIC OF TURKEY

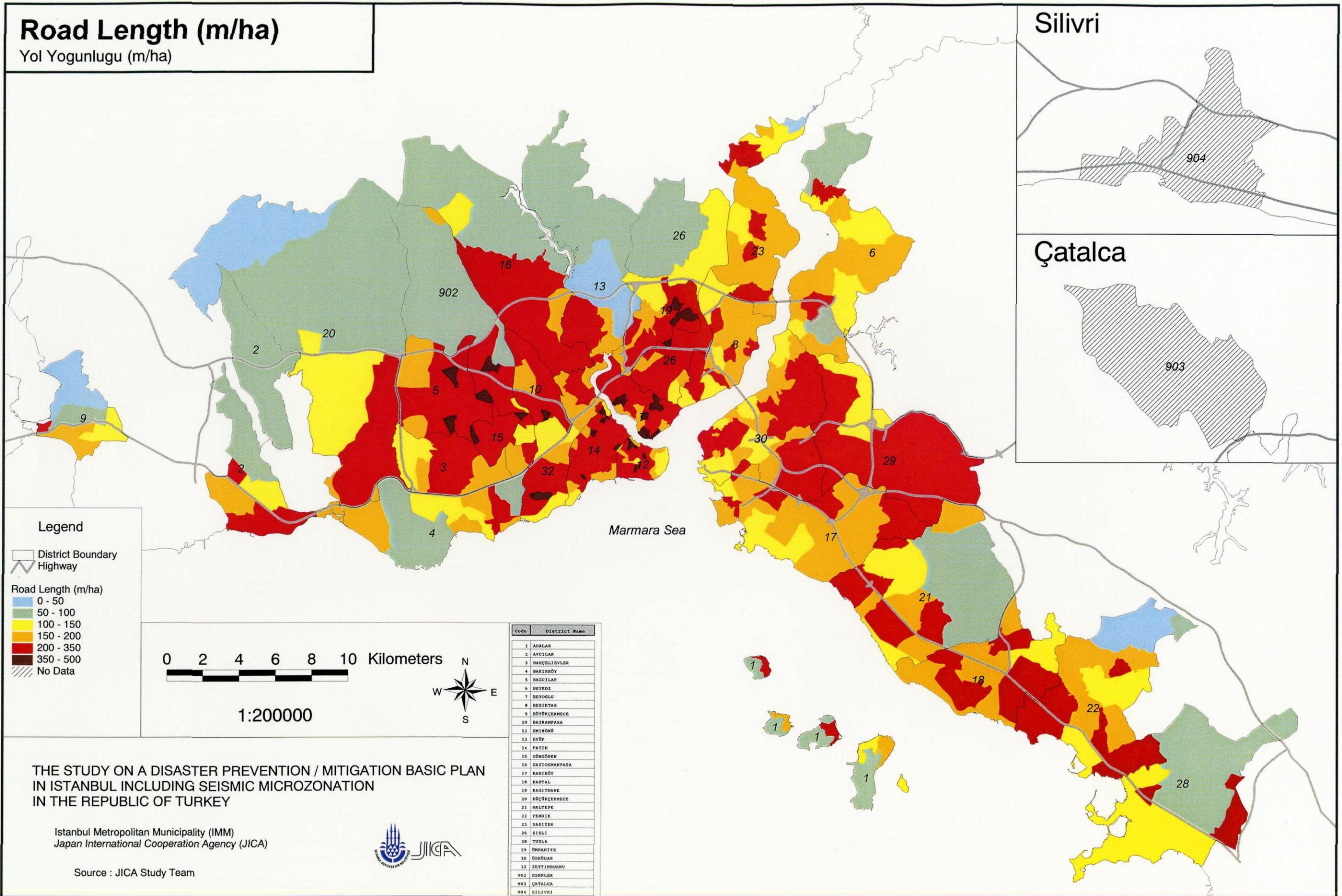
Istanbul Metropolitan Municipality (IMM)
Japan International Cooperation Agency (JICA)

Source : IMM, Apk Daire Başkanlığı, Ulaşım Planlama Müdürlüğü
Afet Durumlarında Acil Ulaşım ve Eylem Planı
2000



Road Length (m/ha)

Yol Yoğunluğu (m/ha)



Legend

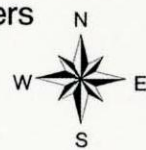
□ District Boundary
 Highway

Road Length (m/ha)

0 - 50
 50 - 100
 100 - 150
 150 - 200
 200 - 350
 350 - 500
 No Data

0 2 4 6 8 10 Kilometers

1:200000



Code	District Name
1	ADALAR
2	AVCILAR
3	BANGILIEYLER
4	BARKIRÖY
5	BAGCILAR
6	BEKÖZ
7	BETÜRLÜ
8	BESIKTAS
9	BÜYÜKÇEKMECE
10	BAYRAMPAŞA
11	EMİRHÖNÜ
12	EYÜP
13	FATİH
14	GÖNÜŞEN
15	GAZİOSMANPAŞA
16	KADIKÖY
17	KARTAL
18	KAGITHANE
19	KÜÇÜKÇEKMECE
20	MALTEPE
21	FENİK
22	SARIER
23	SİSLİ
24	TUZLA
25	ÜMRANİYE
26	ŞEKİR
27	ŞİŞLİ
28	ÜSKÜDAR
29	BEKLEKÖY
30	BEKLEKÖY
31	BEKLEKÖY
32	BEKLEKÖY
902	ESENLER
903	ÇATALCA
904	SİLİVRİ

THE STUDY ON A DISASTER PREVENTION / MITIGATION BASIC PLAN
 IN ISTANBUL INCLUDING SEISMIC MICROZONATION
 IN THE REPUBLIC OF TURKEY

Istanbul Metropolitan Municipality (IMM)
 Japan International Cooperation Agency (JICA)

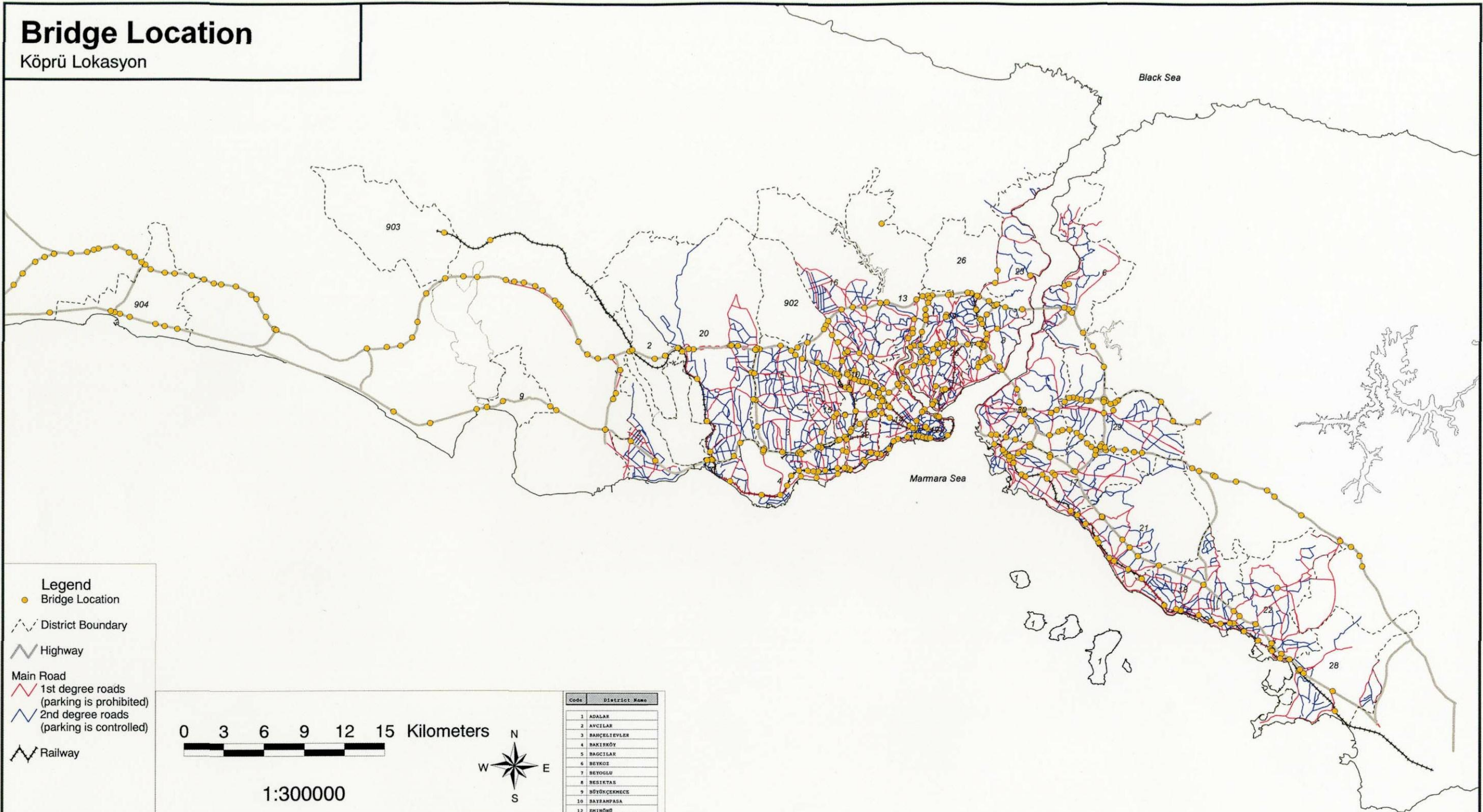


Source : JICA Study Team

A-41 Road Length (m/ha)

Bridge Location

Köprü Lokasyon



Legend

- Bridge Location
- - - District Boundary
- ▬ Highway
- Main Road
 - ▬ 1st degree roads (parking is prohibited)
 - ▬ 2nd degree roads (parking is controlled)
- ▬ Railway

0 3 6 9 12 15 Kilometers

1:300000

Code	District Name
1	ADALAR
2	AVCILAR
3	BAĞCISALTI
4	BAĞCILAR
5	BAĞCILAR
6	BEYKOZ
7	BEYOĞLU
8	BESIKTAS
9	BÜYÜKÇEKMECE
10	BAYRAMPAŞA
11	EMİRHANLI
12	EMİRHANLI
13	EYÜP
14	FATİH
15	ĞİĞİRGEN
16	GAZİOSMANPAŞA
17	KADIKÖY
18	KARTAL
19	KAGITHANE
20	KÜÇÜKÇEKMECE
21	MALTEPE
22	PENDEK
23	SARIER
24	SİSİ
25	TUZLA
26	ÜSKÜDAR
27	ZEYTİNBURNU
28	ESENLER
29	CATLICA
30	SİLİVRİ

THE STUDY ON A DISASTER PREVENTION / MITIGATION BASIC PLAN
IN ISTANBUL INCLUDING SEISMIC MICROZONATION
IN THE REPUBLIC OF TURKEY

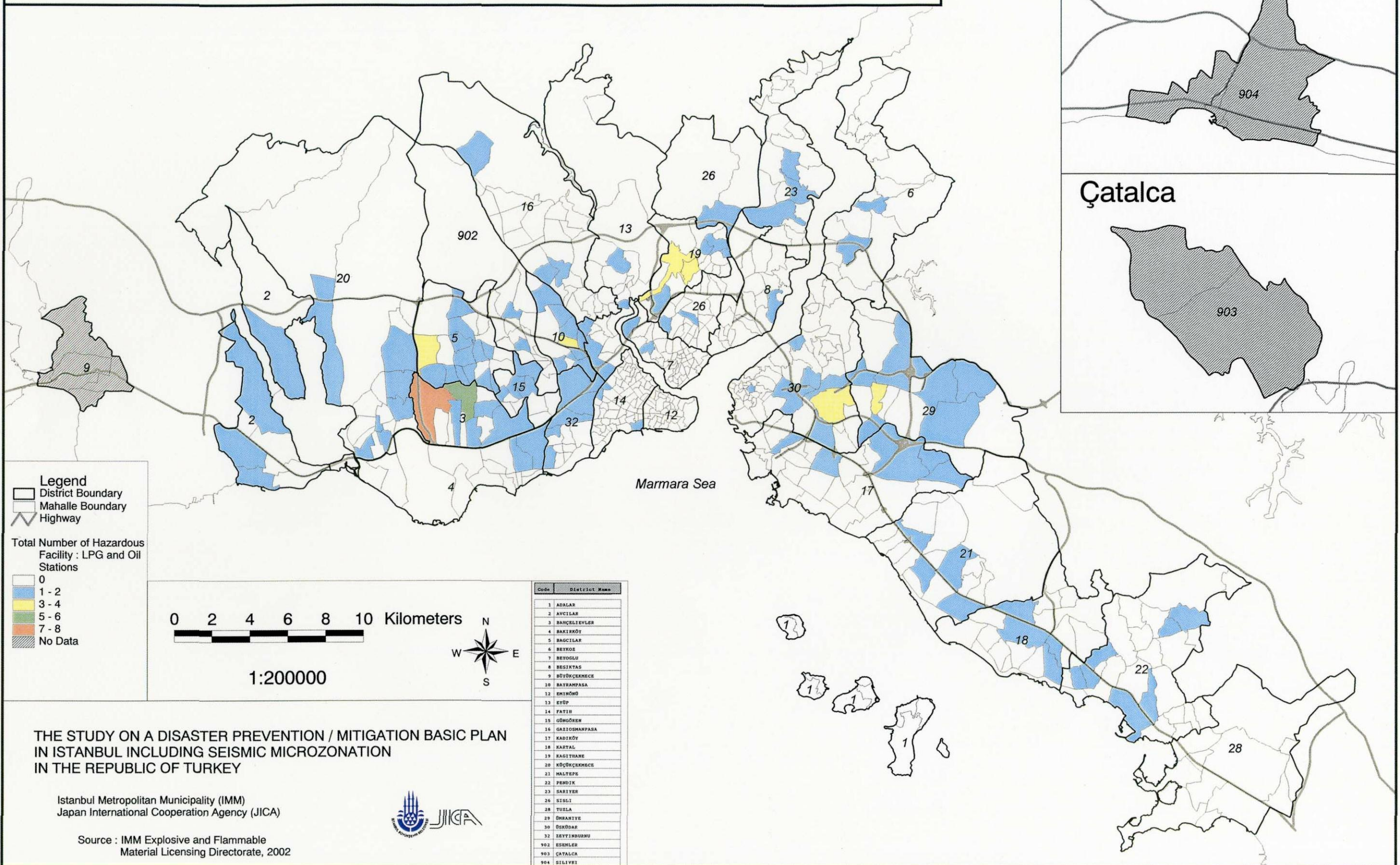
Istanbul Metropolitan Municipality (IMM)
Japan International Cooperation Agency (JICA)



Source : 1st and 17th Region Highway, IMM, TCDD, IETT, 2002

Number of Hazardous Facility by Mahalle : LPG and Oil Stations

Mahallelere Göre Toplam Yanıcı-Parlayıcı Madde İşletmelerinin Sayısı : LPG ve Benzin İstasyonları



THE STUDY ON A DISASTER PREVENTION / MITIGATION BASIC PLAN
IN ISTANBUL INCLUDING SEISMIC MICROZONATION
IN THE REPUBLIC OF TURKEY

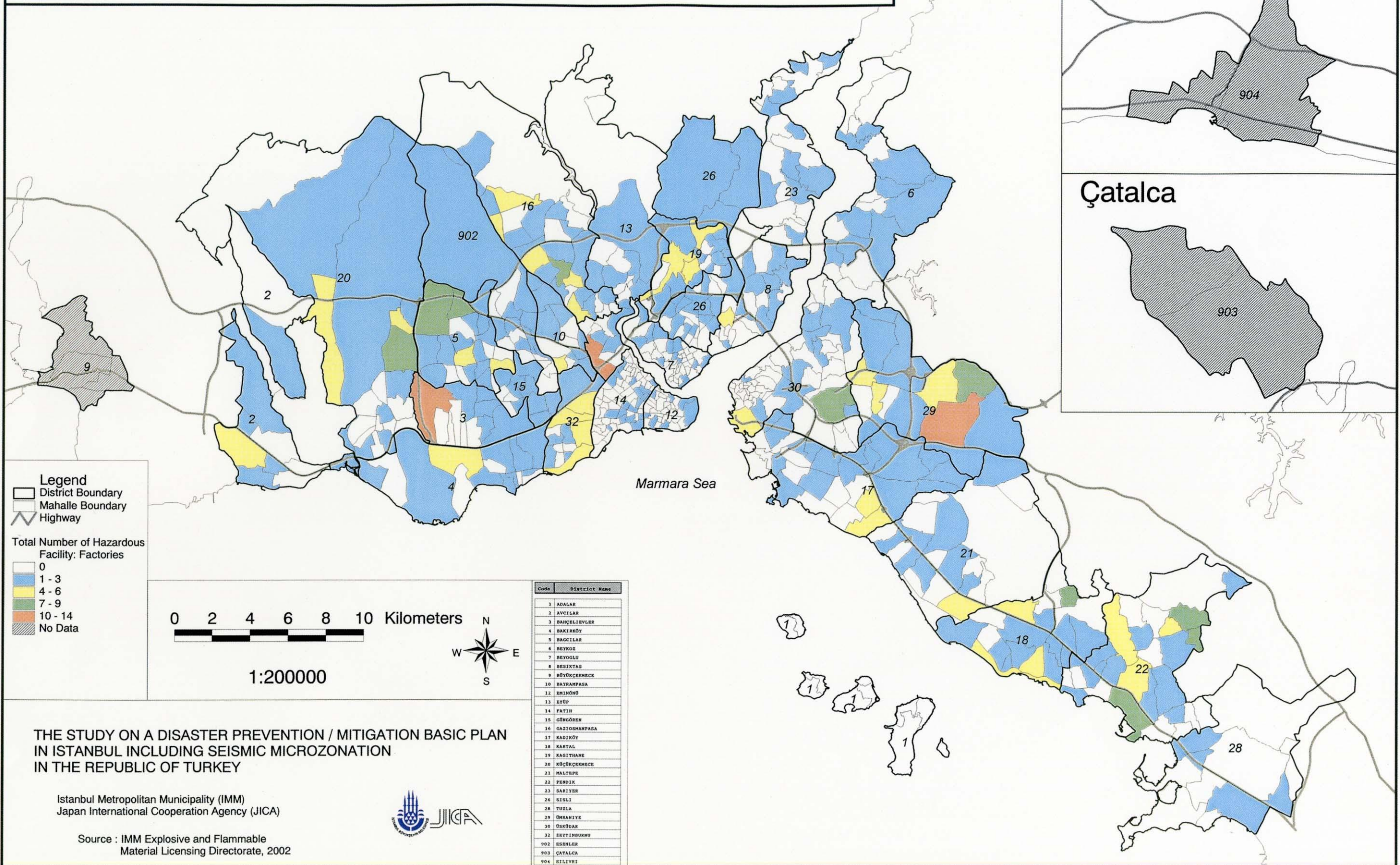
Istanbul Metropolitan Municipality (IMM)
Japan International Cooperation Agency (JICA)



Source : IMM Explosive and Flammable
Material Licensing Directorate, 2002

Number of Hazardous Facility by Mahalle : Factories

Mahallelere Göre Toplam Yanıcı-Parlayıcı Madde İşletmelerinin Sayısı : Fabrikalar



THE STUDY ON A DISASTER PREVENTION / MITIGATION BASIC PLAN
IN ISTANBUL INCLUDING SEISMIC MICROZONATION
IN THE REPUBLIC OF TURKEY

Istanbul Metropolitan Municipality (IMM)
Japan International Cooperation Agency (JICA)



Source : IMM Explosive and Flammable
Material Licensing Directorate, 2002