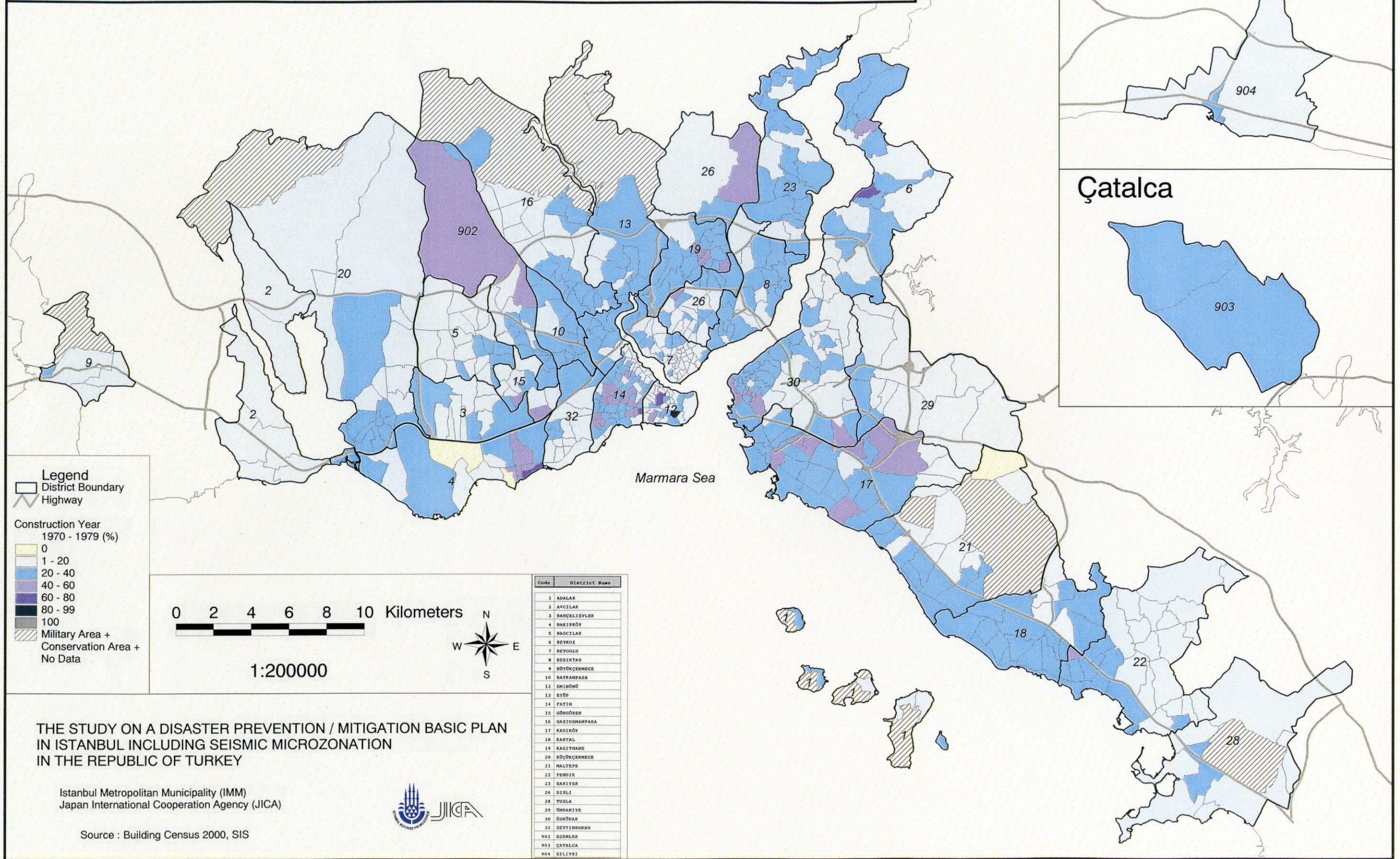


Building Ratio Distribution by Construction Year : 1970 - 1979

Yapım Yılına Göre Bina Oranlarının Dağılımı : 1970 - 1979



THE STUDY ON A DISASTER PREVENTION / MITIGATION BASIC PLAN IN ISTANBUL INCLUDING SEISMIC MICROZONATION IN THE REPUBLIC OF TURKEY

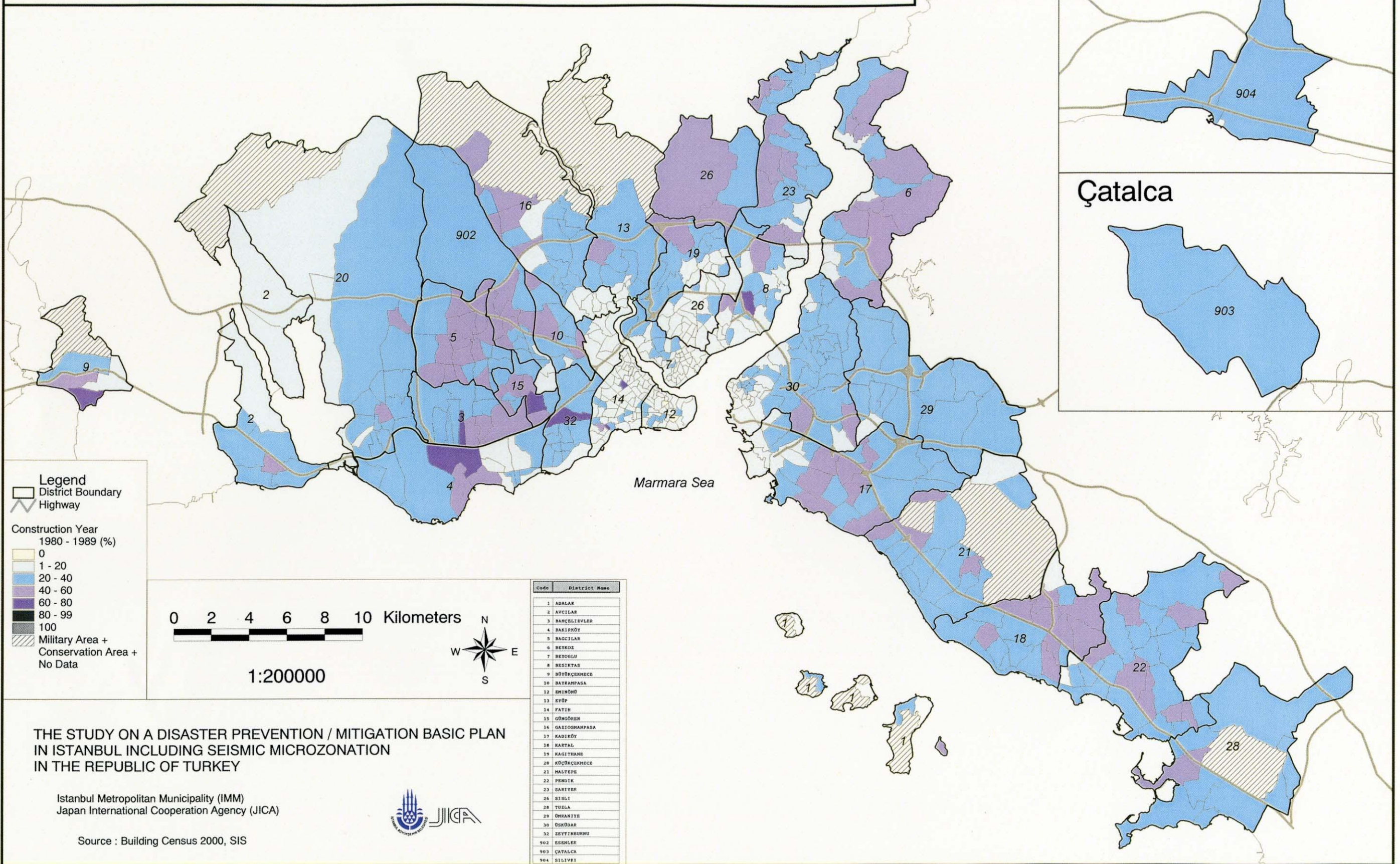
Istanbul Metropolitan Municipality (IMM)
 Japan International Cooperation Agency (JICA)



Source : Building Census 2000, SIS

Building Ratio Distribution by Construction Year : 1980 - 1989

Yapım Yılına Göre Bina Oranlarının Dağılımı : 1980 - 1989



THE STUDY ON A DISASTER PREVENTION / MITIGATION BASIC PLAN
 IN ISTANBUL INCLUDING SEISMIC MICROZONATION
 IN THE REPUBLIC OF TURKEY

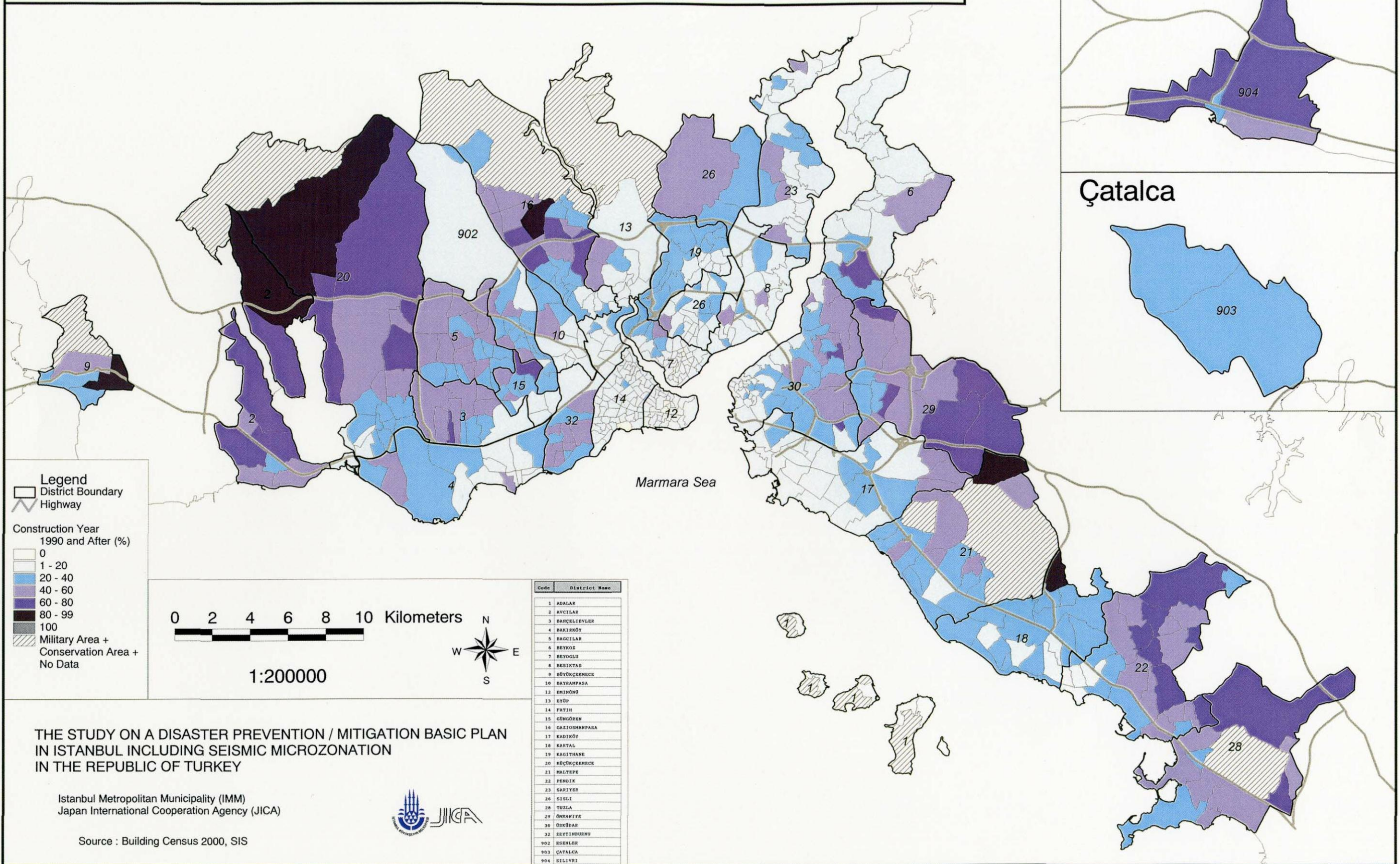
Istanbul Metropolitan Municipality (IMM)
 Japan International Cooperation Agency (JICA)



Source : Building Census 2000, SIS

Building Ratio Distribution by Construction Year : 1990 and After

Yapım Yılına Göre Bina Oranlarının Dağılımı : 1990 ve Sonrası



THE STUDY ON A DISASTER PREVENTION / MITIGATION BASIC PLAN IN ISTANBUL INCLUDING SEISMIC MICROZONATION IN THE REPUBLIC OF TURKEY

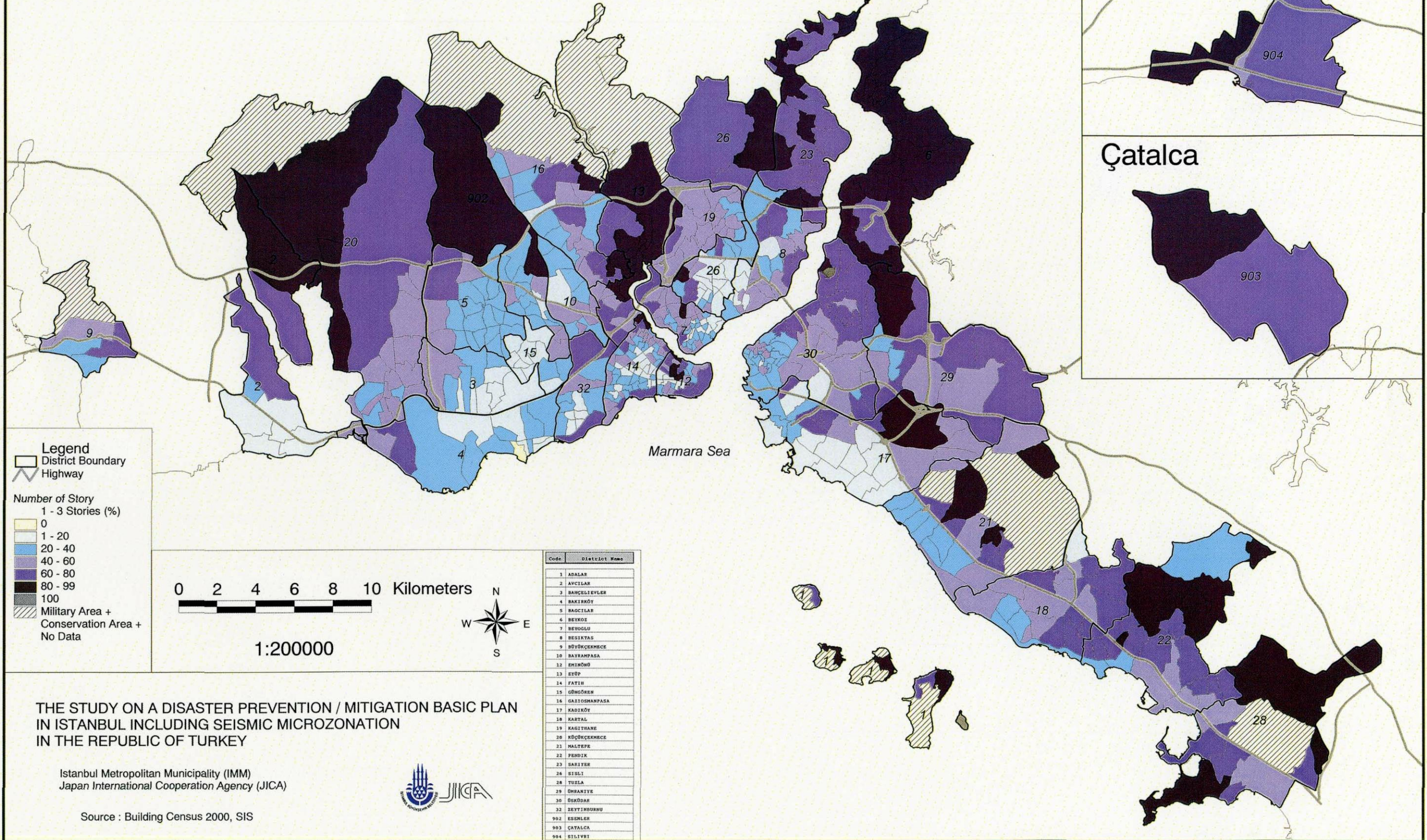
Istanbul Metropolitan Municipality (IMM)
Japan International Cooperation Agency (JICA)



Source : Building Census 2000, SIS

Building Ratio Distribution by Story : 1 - 3 Stories

Kat Adedine Göre Bina Oranlarinin Dagilimi : 1 - 3 Katlilar



THE STUDY ON A DISASTER PREVENTION / MITIGATION BASIC PLAN
 IN ISTANBUL INCLUDING SEISMIC MICROZONATION
 IN THE REPUBLIC OF TURKEY

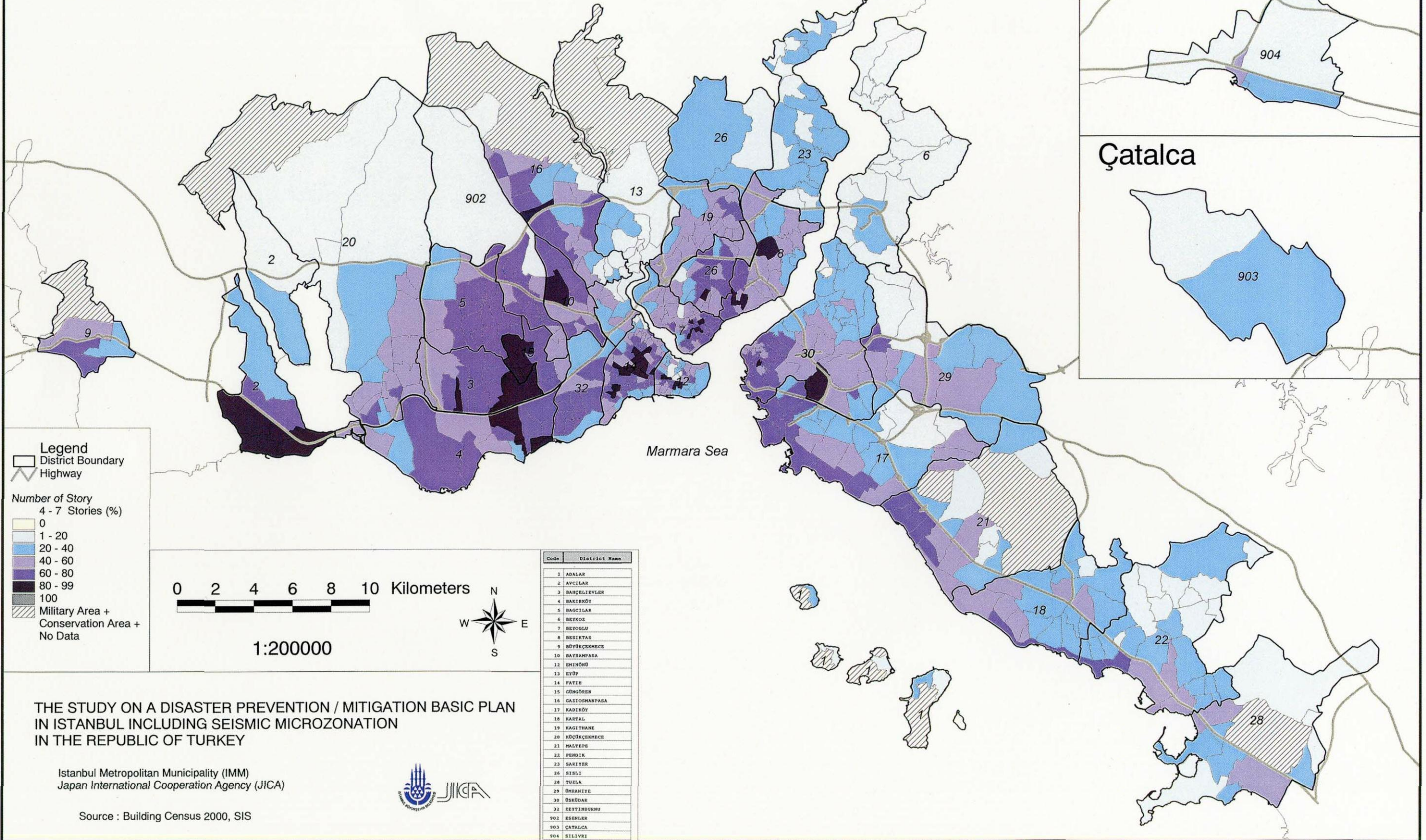
Istanbul Metropolitan Municipality (IMM)
 Japan International Cooperation Agency (JICA)



Source : Building Census 2000, SIS

Building Ratio Distribution by Story : 4 - 7 Stories

Kat Adedine Göre Bina Oranlarının Dağılımı : 4-7 Katlılar



THE STUDY ON A DISASTER PREVENTION / MITIGATION BASIC PLAN IN ISTANBUL INCLUDING SEISMIC MICROZONATION IN THE REPUBLIC OF TURKEY

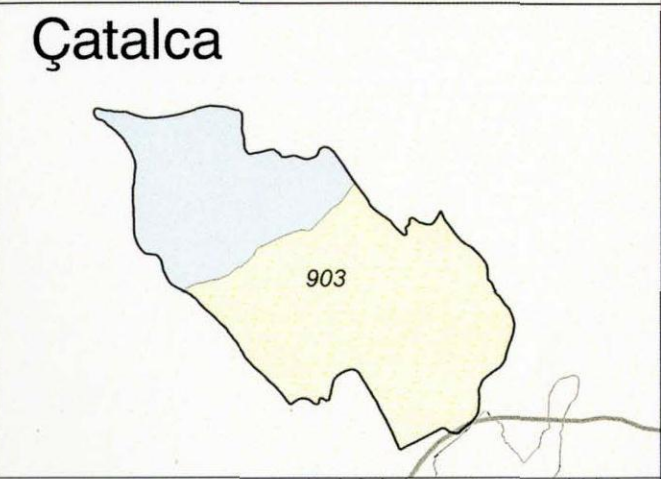
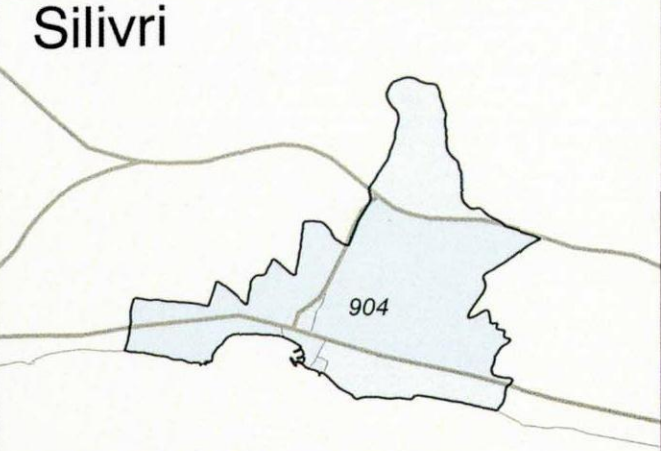
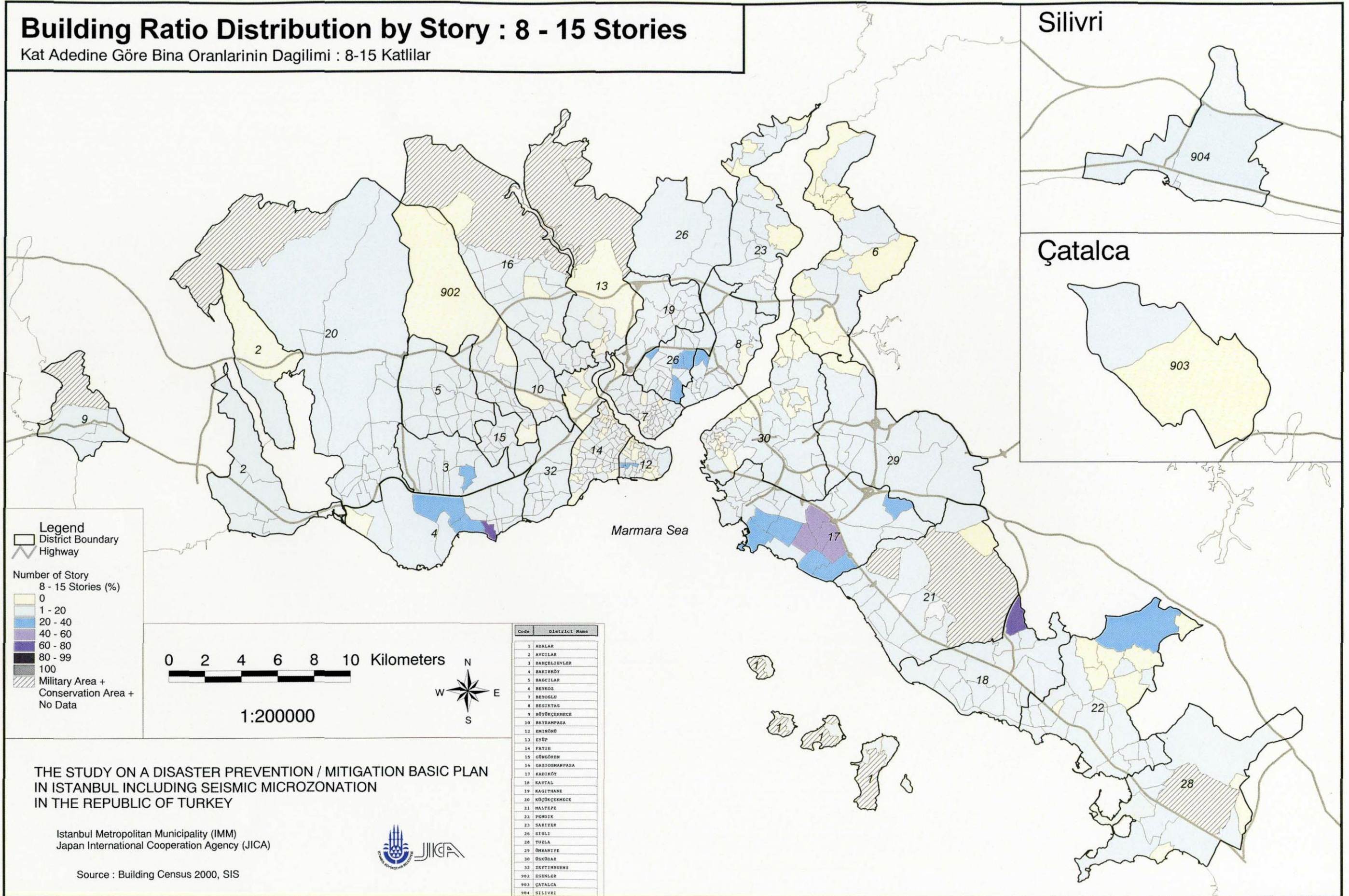
Istanbul Metropolitan Municipality (IMM)
Japan International Cooperation Agency (JICA)



Source : Building Census 2000, SIS

Building Ratio Distribution by Story : 8 - 15 Stories

Kat Adedine Göre Bina Oranlarinin Dagilimi : 8-15 Katlilar



Legend

- District Boundary
- Highway

Number of Story
8 - 15 Stories (%)

- 0
- 1 - 20
- 20 - 40
- 40 - 60
- 60 - 80
- 80 - 99
- 100
- Military Area + Conservation Area + No Data

0 2 4 6 8 10 Kilometers

1:200000

Code	District Name
1	ADALAR
2	AVCILAR
3	BANÇELIEVLER
4	BAKIRKÖY
5	BAGCILAR
6	BEYKOS
7	BEYOGLU
8	BESIKTAS
9	BÜYÜKÇEKMECE
10	BAYRAMPAŞA
12	EMİRNÖH
13	EYÜP
14	FATİH
15	GÜNGÖREN
16	GAZIOSMANPAŞA
17	KADIKÖY
18	KARTAL
19	KAGITHANE
20	KÜÇÜKÇEKMECE
21	HALTPE
22	PENDEK
23	SARIER
26	SİSLE
28	TUZLA
29	ÜSKÜDAR
30	ÖSKÖDAR
32	ZEVTLER
902	ESENLER
903	ÇATALCA
904	SILIVRI

THE STUDY ON A DISASTER PREVENTION / MITIGATION BASIC PLAN
IN ISTANBUL INCLUDING SEISMIC MICROZONATION
IN THE REPUBLIC OF TURKEY

Istanbul Metropolitan Municipality (IMM)
Japan International Cooperation Agency (JICA)

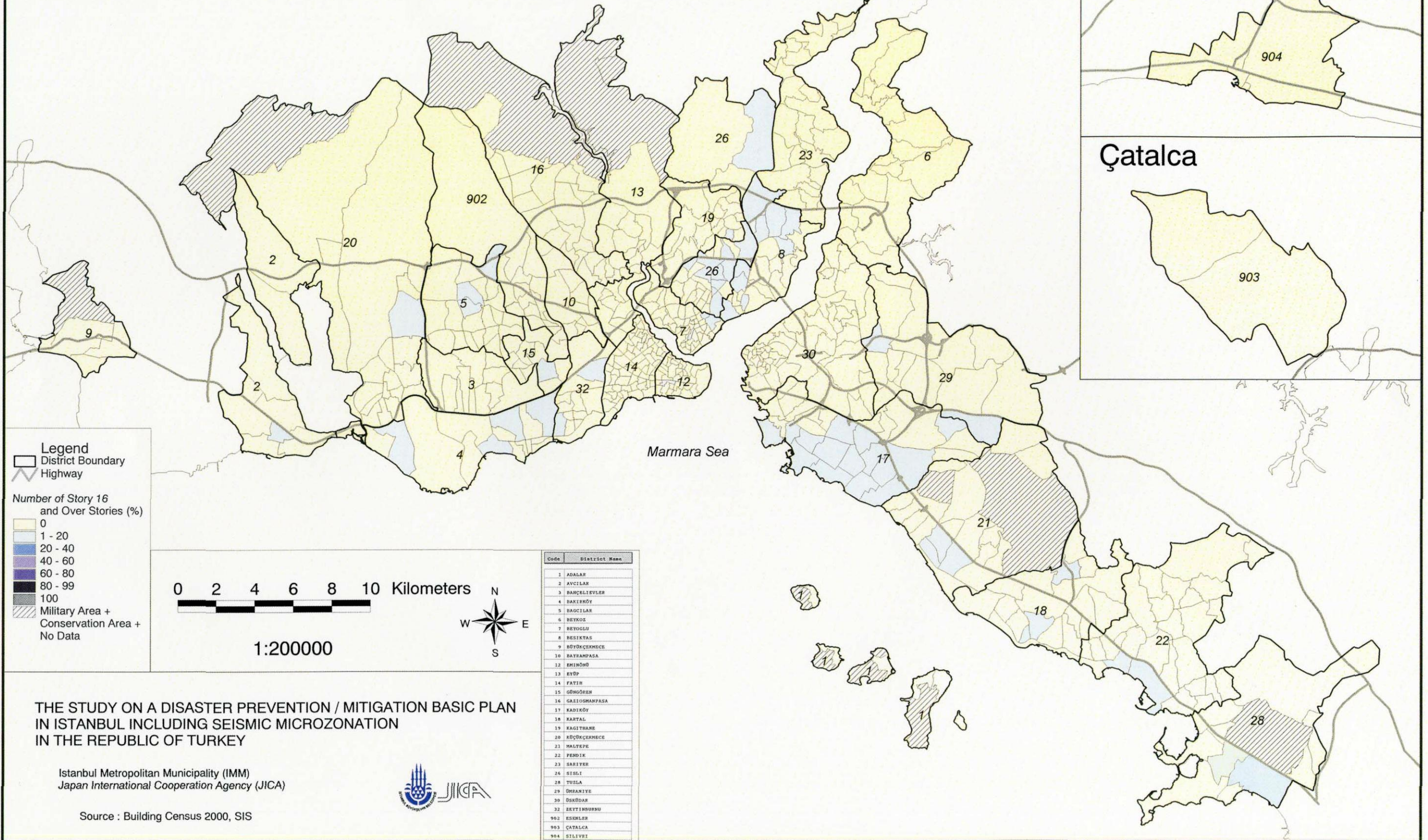


Source : Building Census 2000, SIS

A-26 Building Ratio Distribution by Story : 8 - 15 Stories

Building Ratio Distribution by Story : 16 and Over Stories

Kat Adedine Göre Bina Oranlarının Dağılımı : 16 ve Daha Yüksek Katlılar



Legend

- District Boundary
- Highway

Number of Story 16 and Over Stories (%)

- 0
- 1 - 20
- 20 - 40
- 40 - 60
- 60 - 80
- 80 - 99
- 100
- Military Area + Conservation Area + No Data

0 2 4 6 8 10 Kilometers

1:200000

Code	District Name
1	ADALAR
2	AVCILAR
3	BANÇELİEVLER
4	BAKIRKÖY
5	BACILAR
6	BEYOĞLU
7	BEYOĞLU
8	BESIKTAS
9	BÜYÜKÇERMECE
10	BATIRAPASA
11	EMİNOĞLU
12	EYÜP
13	FATİH
14	FATİH
15	GÖNÜĞREN
16	GAZİOSMANPAŞA
17	KADIKÖY
18	KARTAL
19	KAGITHANE
20	KÜÇÜKÇERMECE
21	MALTEPE
22	FENİK
23	SARIER
24	SİĞİRCİ
25	TUZLA
26	ÜSKÜDAR
27	ÜSKÜDAR
28	ÜSKÜDAR
29	ÜSKÜDAR
30	ÜSKÜDAR
31	ÜSKÜDAR
32	ÜSKÜDAR
902	ESENLER
903	ÇATALCA
904	SİLİVRİ

THE STUDY ON A DISASTER PREVENTION / MITIGATION BASIC PLAN IN ISTANBUL INCLUDING SEISMIC MICROZONATION IN THE REPUBLIC OF TURKEY

Istanbul Metropolitan Municipality (IMM)
Japan International Cooperation Agency (JICA)



Source : Building Census 2000, SIS