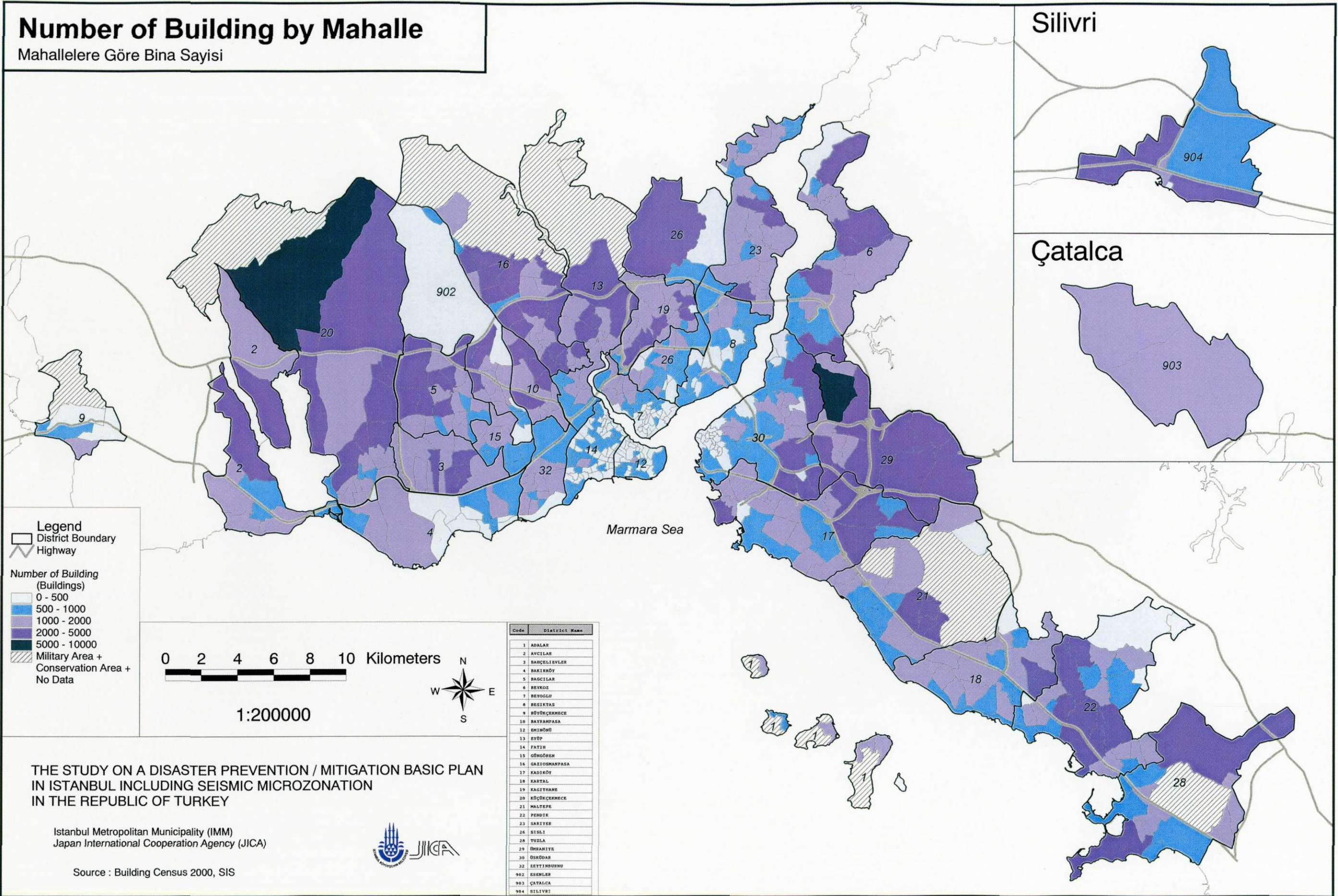


Number of Building by Mahalle

Mahallelere Göre Bina Sayisi



Silivri

Çatalca

Legend

- District Boundary
- Highway

Number of Building (Buildings)

- 0 - 500
- 500 - 1000
- 1000 - 2000
- 2000 - 5000
- 5000 - 10000
- Military Area + Conservation Area + No Data

0 2 4 6 8 10 Kilometers

1:200000

Code	District Name
1	ADALAR
2	AVCILAR
3	BAHÇELİEVLER
4	BAKIRKÖY
5	BAGCILAR
6	BEYKOZ
7	BEYOĞLU
8	BESIKTAS
9	BÜYÜKÇEKMECE
10	BAYRAMPAŞA
11	EMİRHANLI
12	ERNEKİN
13	EYÜP
14	FATİH
15	GÜNGÖR
16	GARİPMEYDAN
17	KADIKÖY
18	KARTAL
19	KAGITHANE
20	KÜÇÜKÇEKMECE
21	MALTEPE
22	PENDEK
23	SARIER
24	SİĞİRCI
25	TUZLA
26	ÜSKÜDAR
27	ŞİŞLİ
28	ŞİŞLİ
29	ŞİŞLİ
30	ŞİŞLİ
31	ŞİŞLİ
32	ŞİŞLİ
901	ESENLER
902	ÇATALCA
903	ÇATALCA
904	SİLİVRİ

THE STUDY ON A DISASTER PREVENTION / MITIGATION BASIC PLAN IN ISTANBUL INCLUDING SEISMIC MICROZONATION IN THE REPUBLIC OF TURKEY

Istanbul Metropolitan Municipality (IMM)
Japan International Cooperation Agency (JICA)

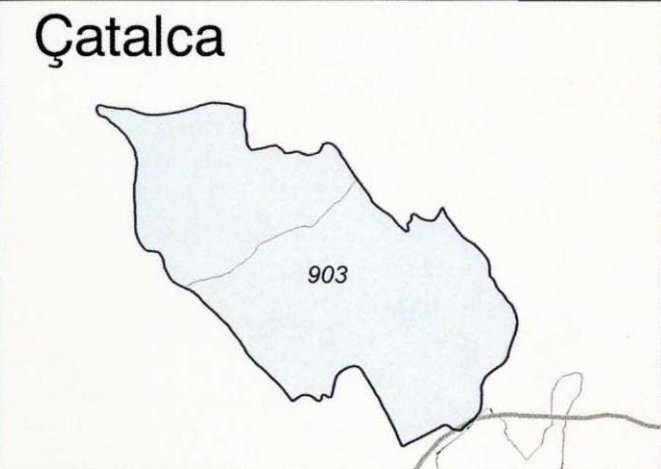
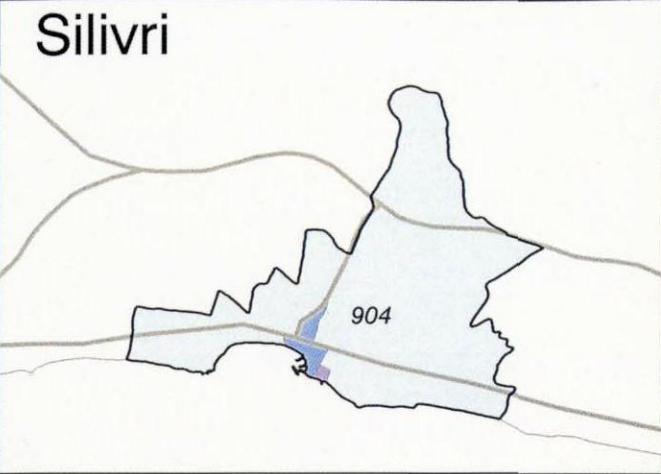
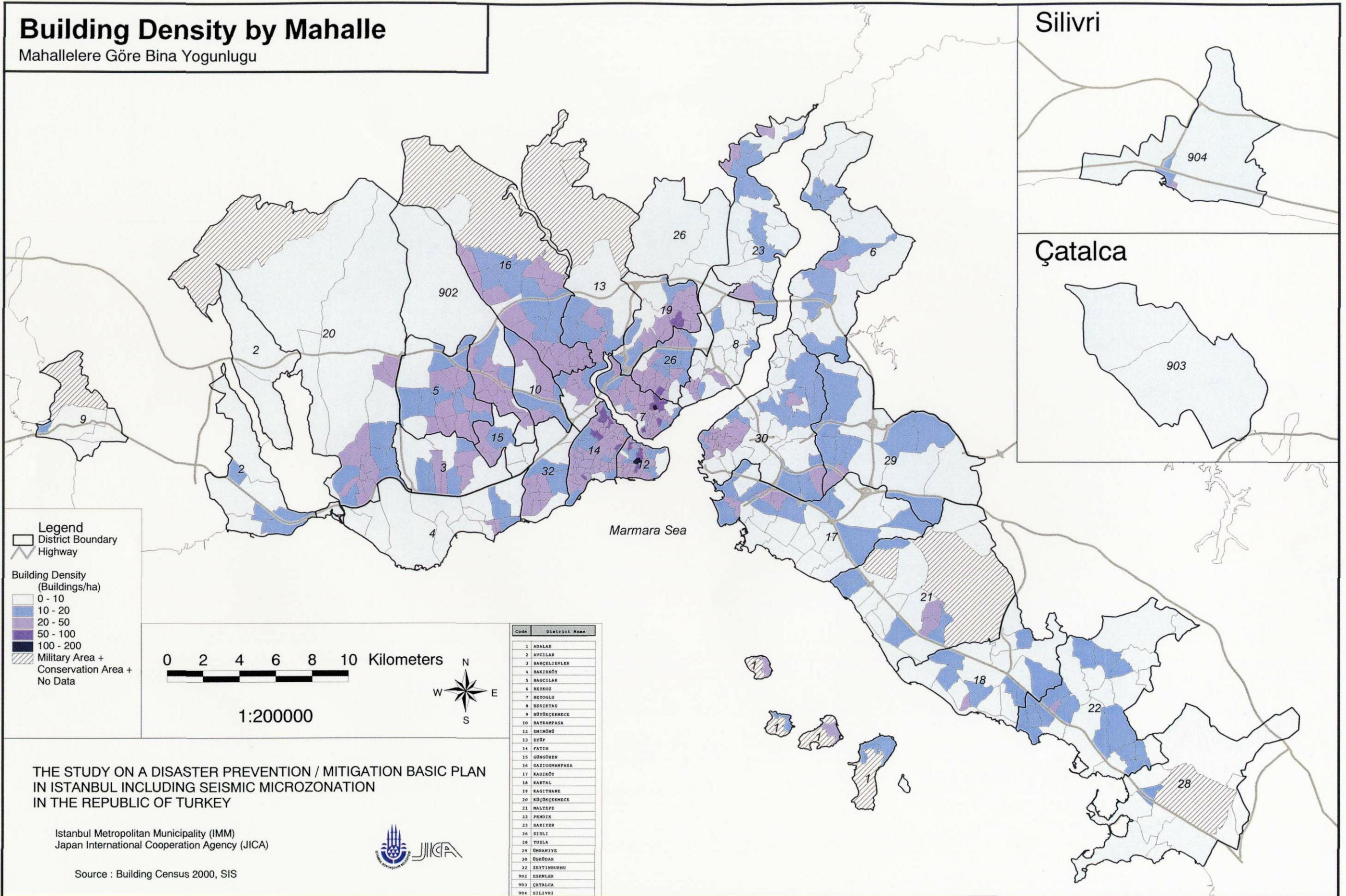


Source : Building Census 2000, SIS

A-14 Number of Building by Mahalle

Building Density by Mahalle

Mahallelere Göre Bina Yoğunluğu



Legend

- District Boundary
- Highway

Building Density (Buildings/ha)

- 0 - 10
- 10 - 20
- 20 - 50
- 50 - 100
- 100 - 200
- Military Area + Conservation Area + No Data

0 2 4 6 8 10 Kilometers

1:200000

Code	District Name
1	ADALAR
2	AVCILAR
3	BAHÇELİEVLER
4	BAKIRKÖY
5	BAGCILAR
6	BEYOĞLU
7	BEYOĞLU
8	BEŞİKTAŞ
9	BÜYÜKÇEKMECE
10	BAĞRAMPAŞA
11	EMİRHANCI
12	EMİRHANCI
13	EYÜP
14	FATİH
15	ĞİVNE
16	GAZİOSMANPAŞA
17	KADIKÖY
18	KARTAL
19	KAGITHANE
20	KÜÇÜKÇEKMECE
21	MALTEPE
22	PENDEK
23	BAKIRKÖY
24	SİĞİRCI
25	SİĞİRCI
26	SİĞİRCI
27	TUZLA
28	ÜSKÜDAR
29	ÜSKÜDAR
30	ÜSKÜDAR
31	ÜSKÜDAR
32	ÜSKÜDAR
902	ESENLER
903	ÇATALCA
904	SİLİVRİ

THE STUDY ON A DISASTER PREVENTION / MITIGATION BASIC PLAN IN ISTANBUL INCLUDING SEISMIC MICROZONATION IN THE REPUBLIC OF TURKEY

Istanbul Metropolitan Municipality (IMM)
Japan International Cooperation Agency (JICA)

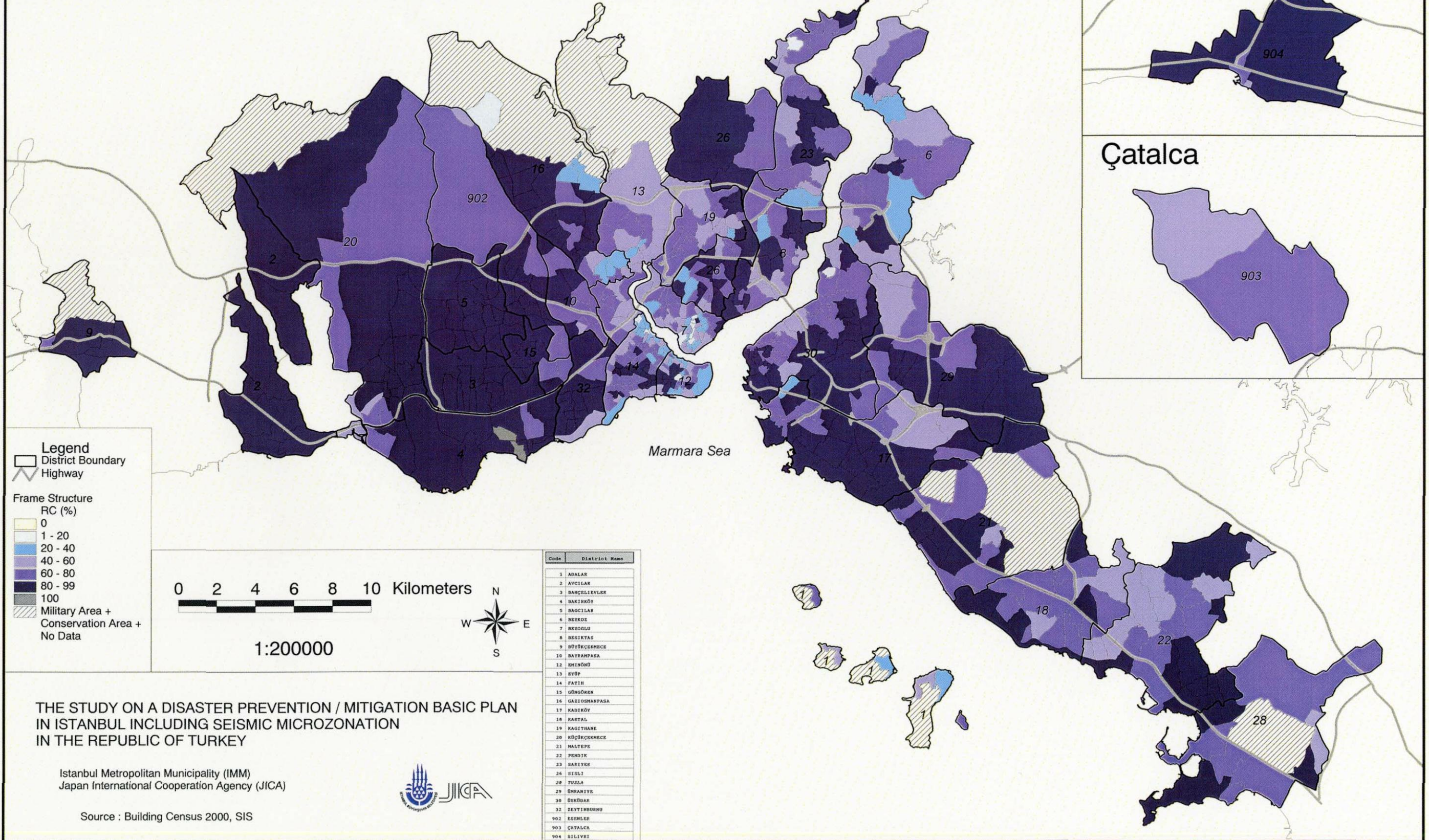


Source : Building Census 2000, SIS

A-15 Building Density by Mahalle

Building Ratio Distribution by Structure Frame Structure: RC

Yapı Türüne Göre Bina Oranlarının Dağılımı, Karkas Yapı : Betonarme



THE STUDY ON A DISASTER PREVENTION / MITIGATION BASIC PLAN
 IN ISTANBUL INCLUDING SEISMIC MICROZONATION
 IN THE REPUBLIC OF TURKEY

Istanbul Metropolitan Municipality (IMM)
 Japan International Cooperation Agency (JICA)

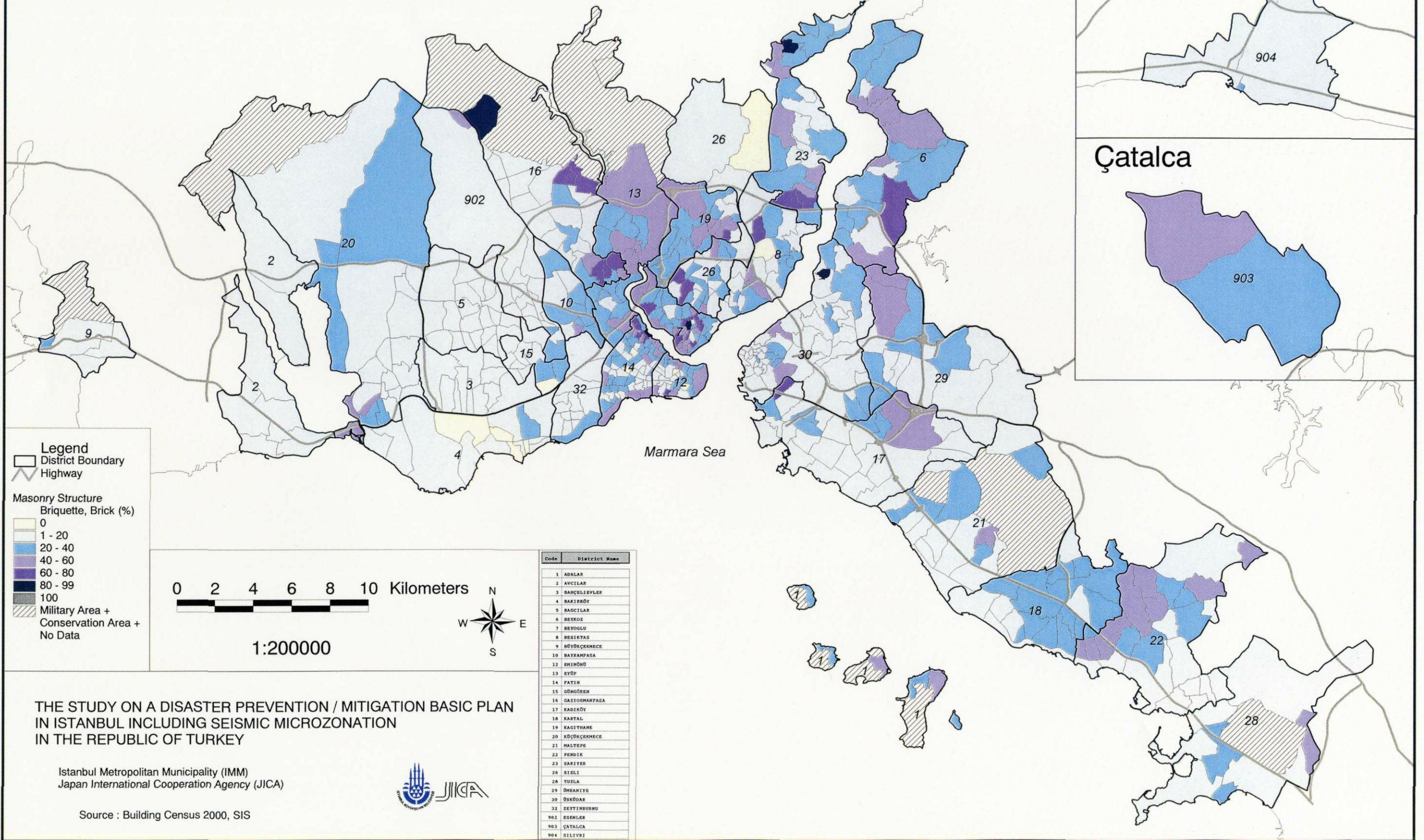


Source : Building Census 2000, SIS

A-16 Building Ratio Distribution by Structure Frame Structure: RC

Building Ratio Distribution by Structure Masonry Structure: Briquette, Brick

Yapı Türüne Göre Bina Oranlarının Dağılımı, Kagir Yapı : Briket, Tuğla



Legend

- District Boundary
- Highway

**Masonry Structure
Briquette, Brick (%)**

- 0
- 1 - 20
- 20 - 40
- 40 - 60
- 60 - 80
- 80 - 99
- 100
- Military Area +
Conservation Area +
No Data

0 2 4 6 8 10 Kilometers

1:200000

Code	District Name
1	ADALAR
2	AVCILAR
3	BANÇELİEVLER
4	BAKIRKÖY
5	BACILAR
6	BEYOĞLU
7	BEYOĞLU
8	BESIKTAS
9	BÜYÜKÇERKEÇE
10	BAYRAMPAŞA
11	EMİRHÖNÜ
12	EYÜP
13	FATİH
14	FATİH
15	GÖĞÜBÖĞÜZ
16	GAZİOSMANPAŞA
17	KADIKÖY
18	KARTAL
19	KAGITHANE
20	KÜÇÜKÇERKEÇE
21	HALIÇE
22	PERDEKİ
23	SARIER
24	SİSİ
25	TUZLA
26	ÜSKÜDAR
27	ÜSKÜDAR
28	ZETTİNBURNU
902	ESENLER
903	ÇATALCA
904	SİLİVRİ

THE STUDY ON A DISASTER PREVENTION / MITIGATION BASIC PLAN
IN ISTANBUL INCLUDING SEISMIC MICROZONATION
IN THE REPUBLIC OF TURKEY

Istanbul Metropolitan Municipality (IMM)
Japan International Cooperation Agency (JICA)

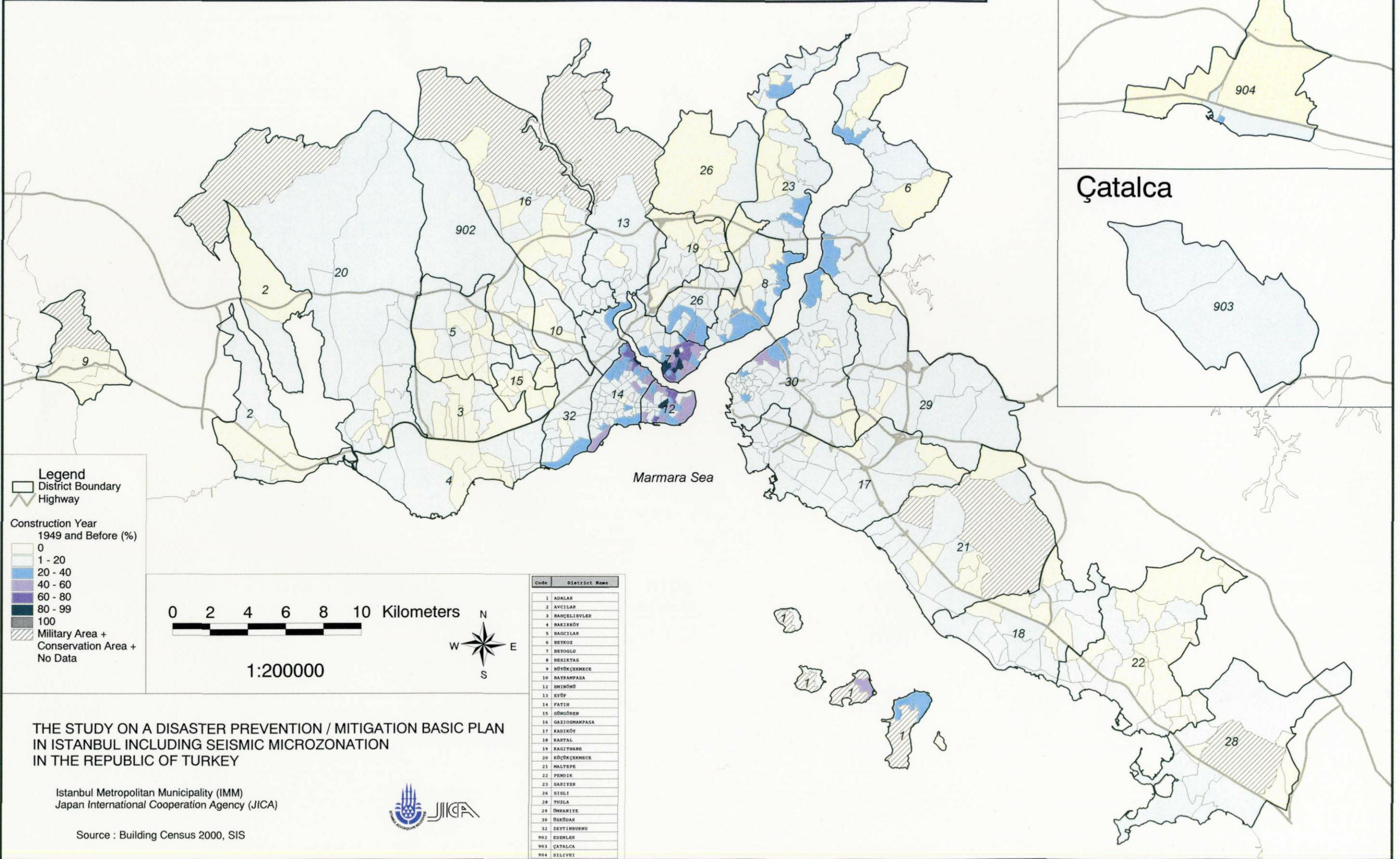


Source : Building Census 2000, SIS

A-17 Building Ratio Distribution by Structure Masonry Structure: Briquette, Brick

Building Ratio Distribution by Construction Year : 1949 and Before

Yapım Yılına Göre Bina Oranlarının Dağılımı : 1949 ve Öncesi



THE STUDY ON A DISASTER PREVENTION / MITIGATION BASIC PLAN IN ISTANBUL INCLUDING SEISMIC MICROZONATION IN THE REPUBLIC OF TURKEY

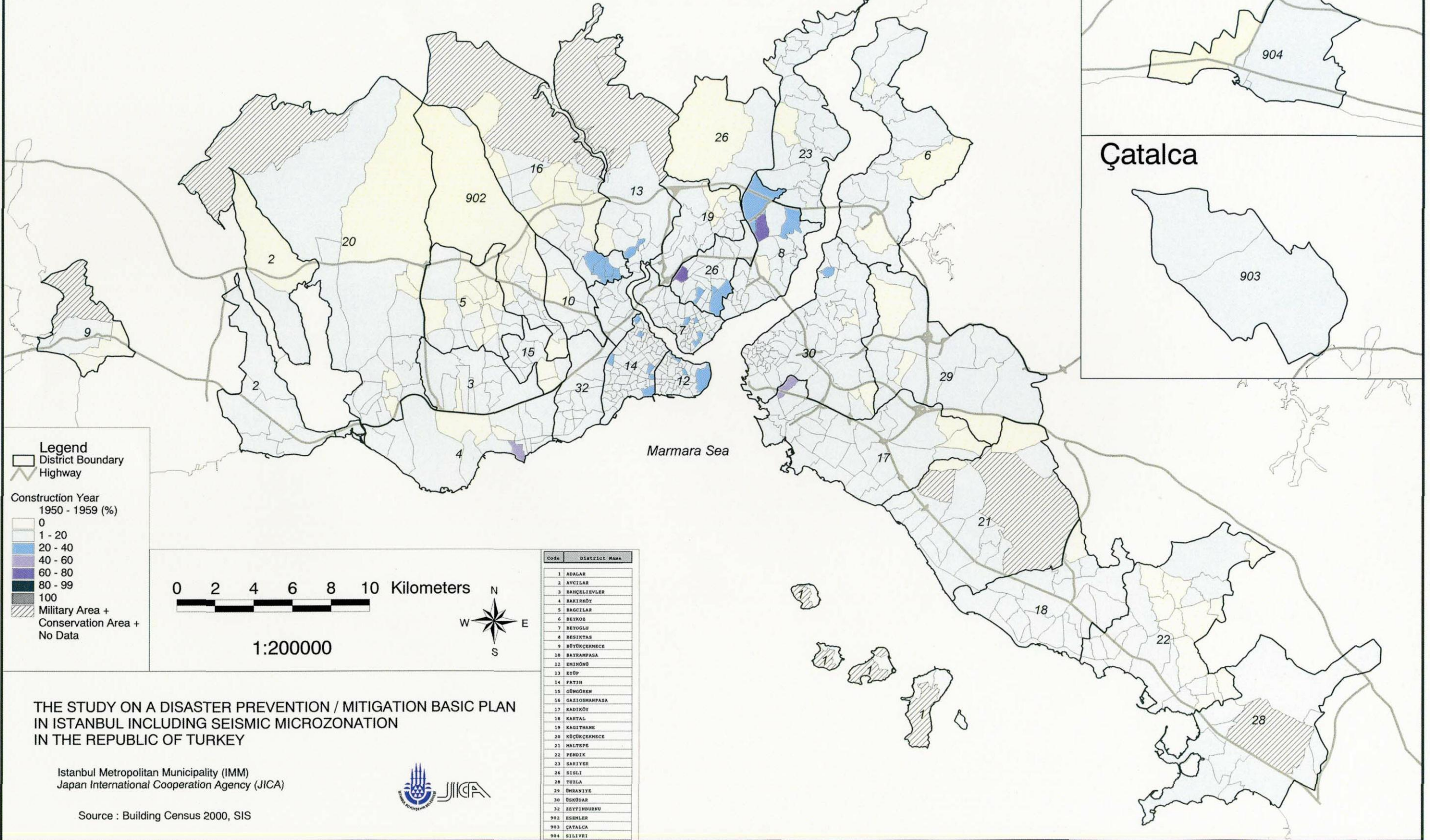
Istanbul Metropolitan Municipality (IMM)
Japan International Cooperation Agency (JICA)



Source : Building Census 2000, SIS

Building Ratio Distribution by Construction Year : 1950 - 1959

Yapım Yılına Göre Bina Oranlarının Dağılımı : 1950 - 1959



THE STUDY ON A DISASTER PREVENTION / MITIGATION BASIC PLAN IN ISTANBUL INCLUDING SEISMIC MICROZONATION IN THE REPUBLIC OF TURKEY

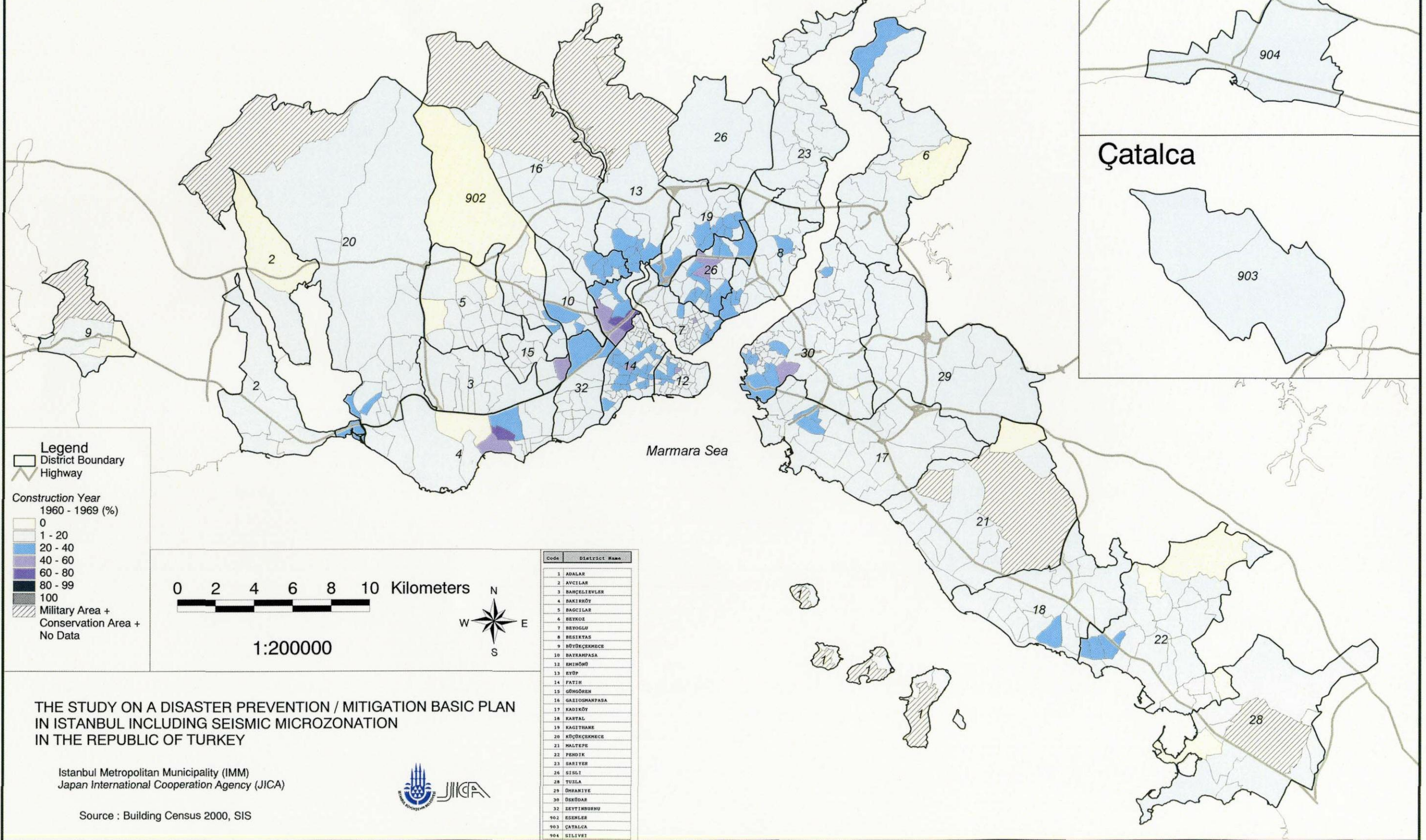
Istanbul Metropolitan Municipality (IMM)
Japan International Cooperation Agency (JICA)



Source : Building Census 2000, SIS

Building Ratio Distribution by Construction Year : 1960 - 1969

Yapım Yılına Göre Bina Oranlarının Dağılımı : 1960 - 1969



THE STUDY ON A DISASTER PREVENTION / MITIGATION BASIC PLAN IN ISTANBUL INCLUDING SEISMIC MICROZONATION IN THE REPUBLIC OF TURKEY

Istanbul Metropolitan Municipality (IMM)
Japan International Cooperation Agency (JICA)



Source : Building Census 2000, SIS