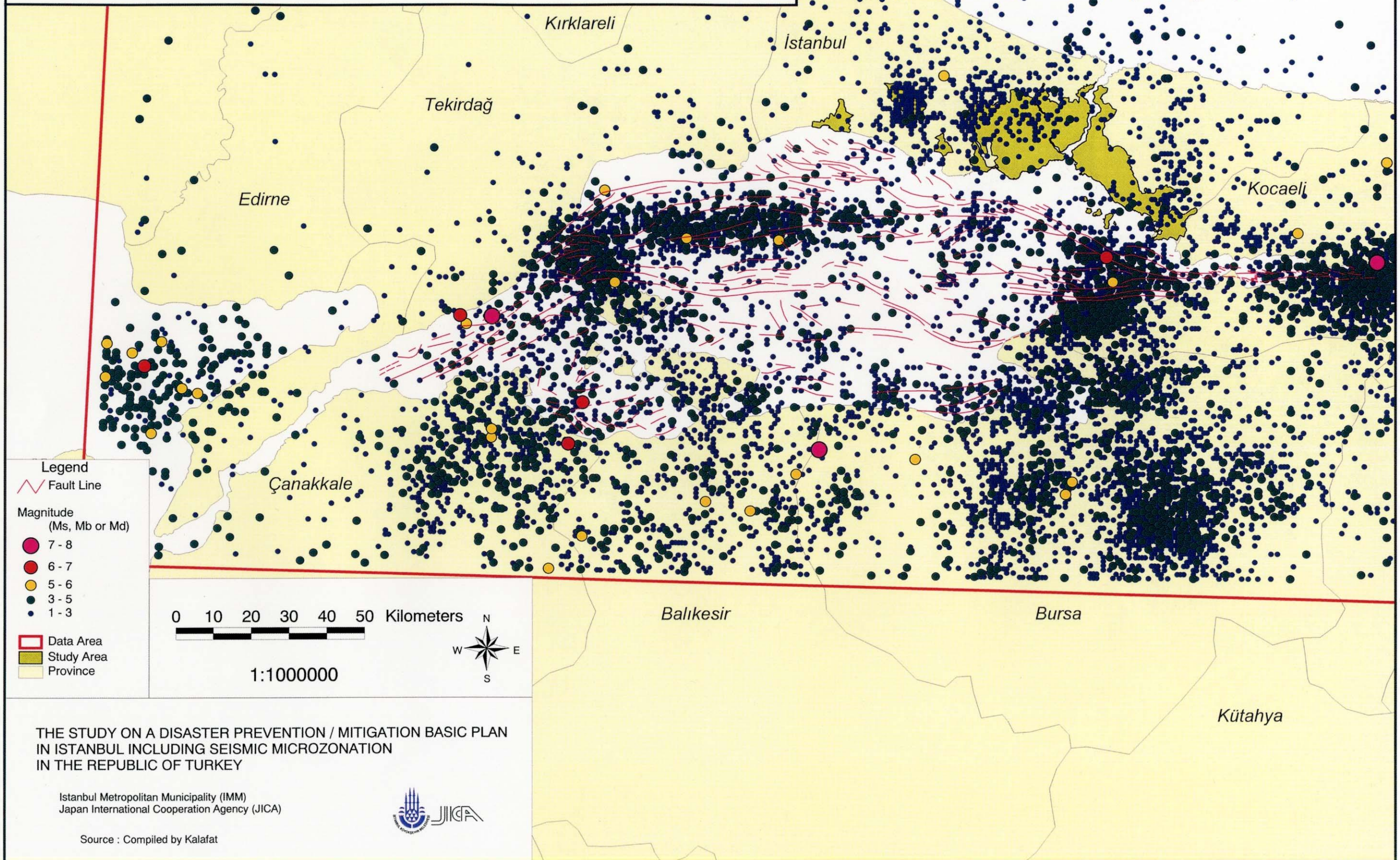


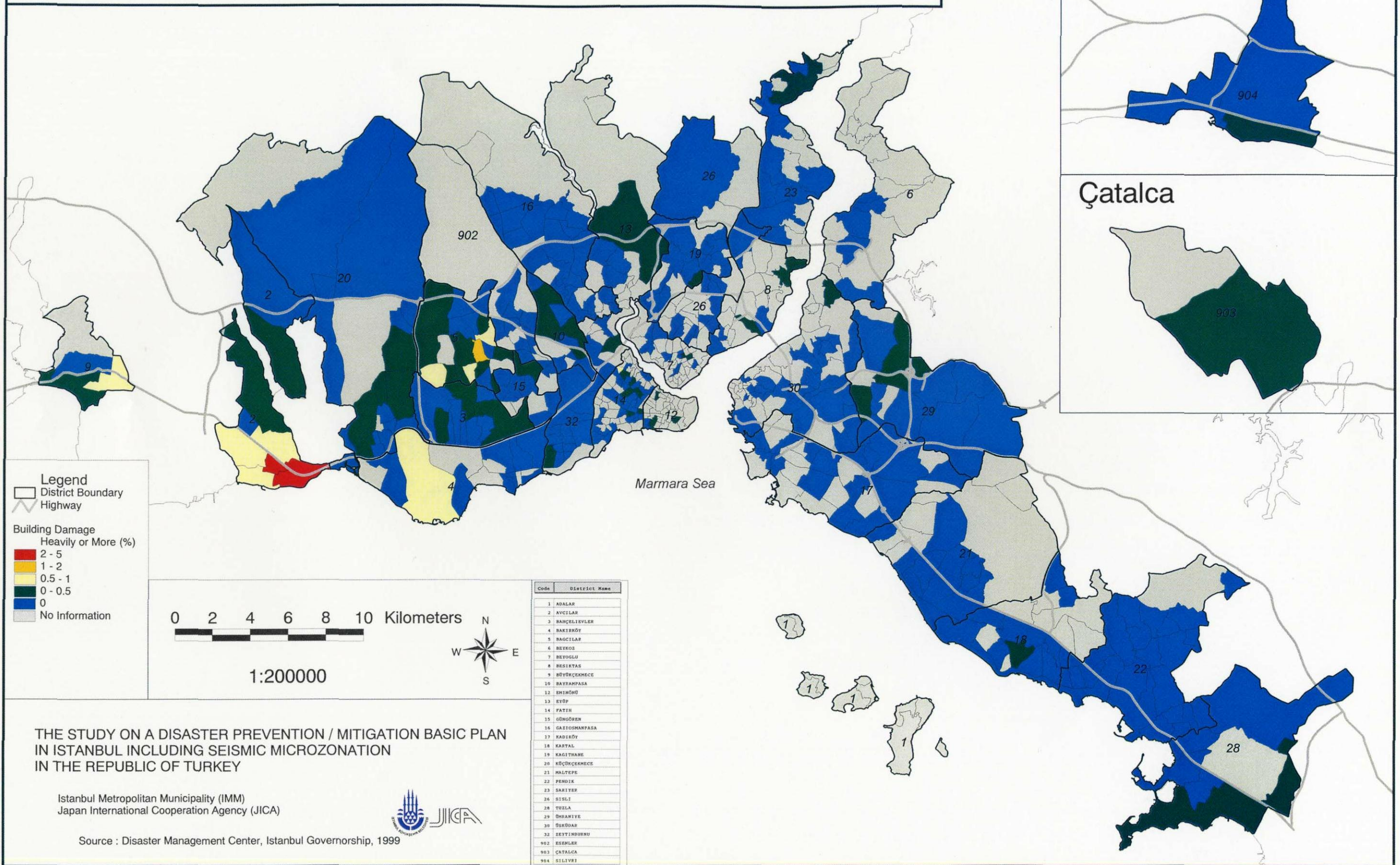
Epicentral Distribution of Earthquakes, 1905 - 2001

Depremlerin Merkez Üsleri Dağılımı, 1905 - 2001



Damaged Building Ratio in İstanbul at 1999 Kocaeli Earthquake

1999 Kocaeli Depreminde İstanbul'daki Hasarlı Bina Oranı



THE STUDY ON A DISASTER PREVENTION / MITIGATION BASIC PLAN
IN İSTANBUL INCLUDING SEISMIC MICROZONATION
IN THE REPUBLIC OF TURKEY

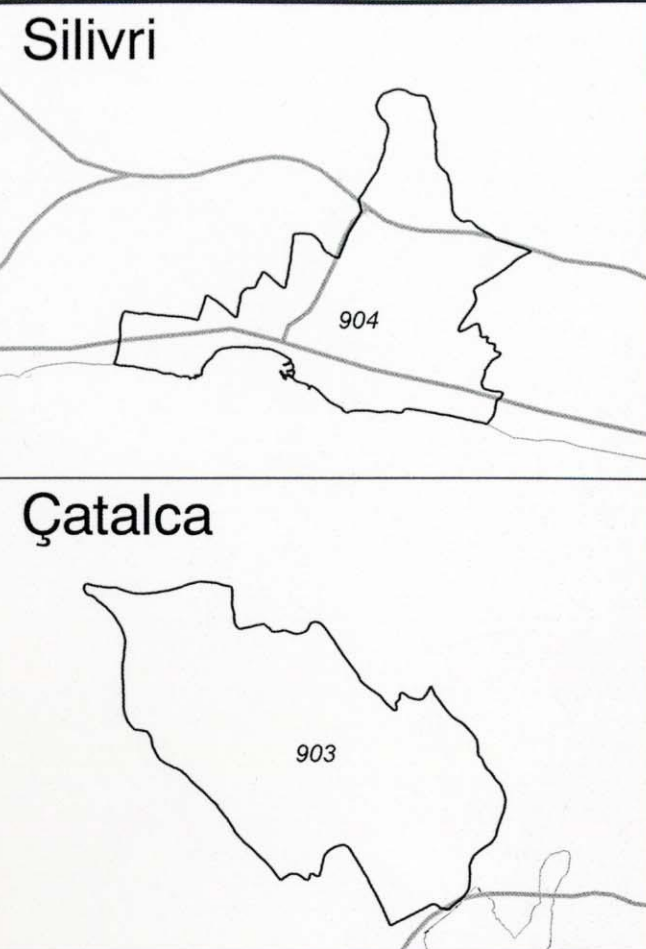
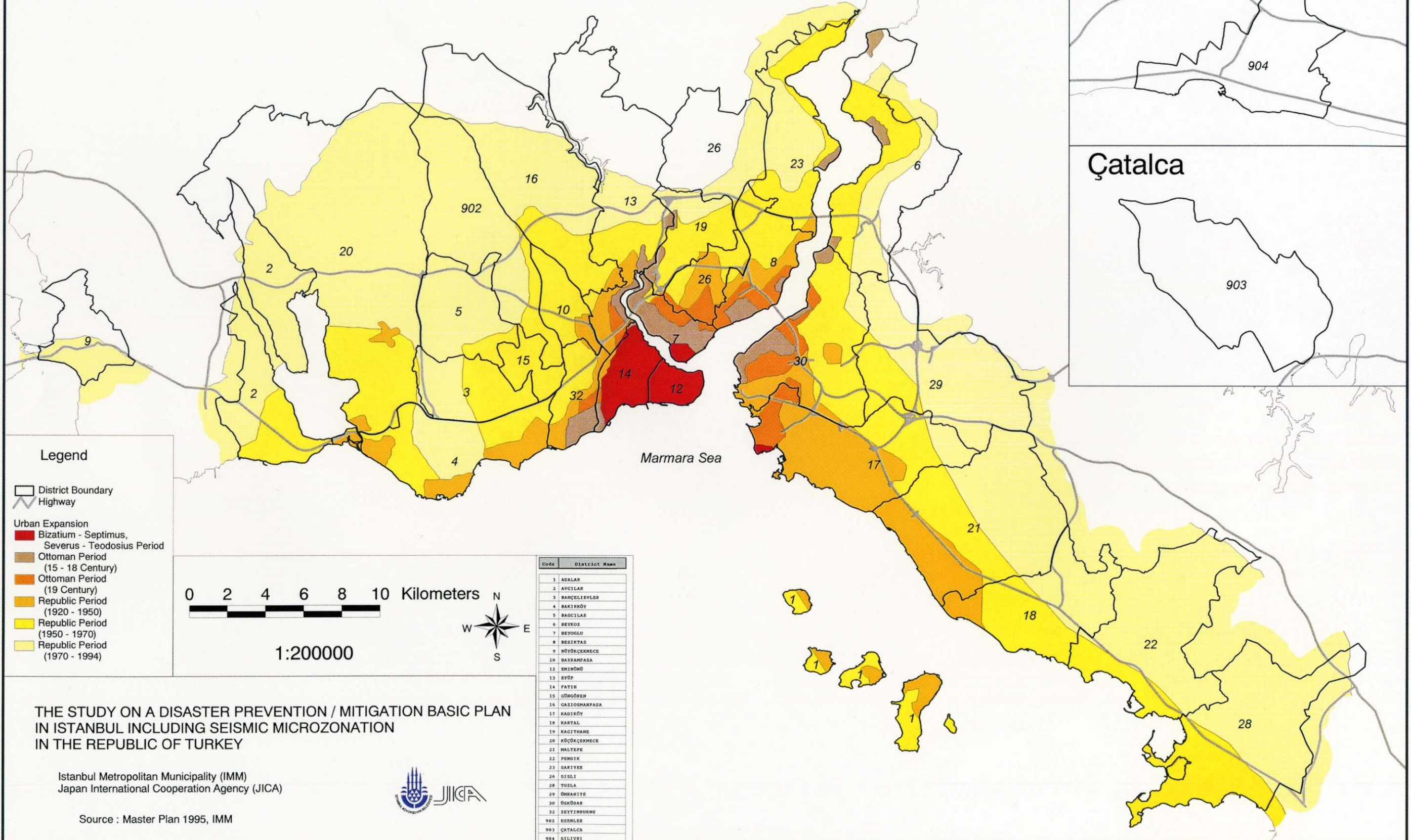
Istanbul Metropolitan Municipality (İMM)
Japan International Cooperation Agency (JICA)



Source : Disaster Management Center, İstanbul Governorship, 1999

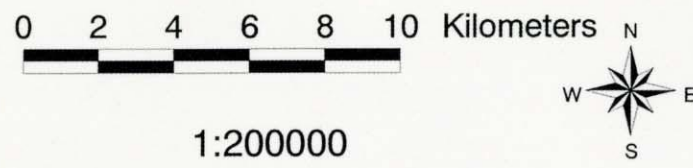
Urban Expansion

Kentsel Gelişim



Legend

- District Boundary
- Highway
- Urban Expansion**
- Bizatium - Septimus, Severus - Teodosius Period
- Ottoman Period (15 - 18 Century)
- Ottoman Period (19 Century)
- Republic Period (1920 - 1950)
- Republic Period (1950 - 1970)
- Republic Period (1970 - 1994)



Code	District Name
1	ADALAR
2	AVCILAR
3	BARÇELİEVLER
4	BAKIRÖY
5	BACILAR
6	BEYKÖZ
7	BEYOĞLU
8	BESİKTAŞ
9	BÜYÜKÇEKİRMECE
10	BAYRAKPASA
12	EMİNOĞU
13	EYÜP
14	FATİH
15	GÖĞÜSÖREN
16	GAZİOSMANPASA
17	KADIKÖY
18	KARTAL
19	KAGITHANE
20	KÜÇÜKÇEKİRMECE
21	MALTEPE
22	PENDEK
23	SARIER
26	SİĞİ
28	TUZLA
29	ÜSKÜDAR
30	ÜSKÜDAR
32	ZETTİNSUURU
902	ESERLER
903	ÇATALCA
904	SİLİVRİ

THE STUDY ON A DISASTER PREVENTION / MITIGATION BASIC PLAN
IN ISTANBUL INCLUDING SEISMIC MICROZONATION
IN THE REPUBLIC OF TURKEY

Istanbul Metropolitan Municipality (IMM)
Japan International Cooperation Agency (JICA)

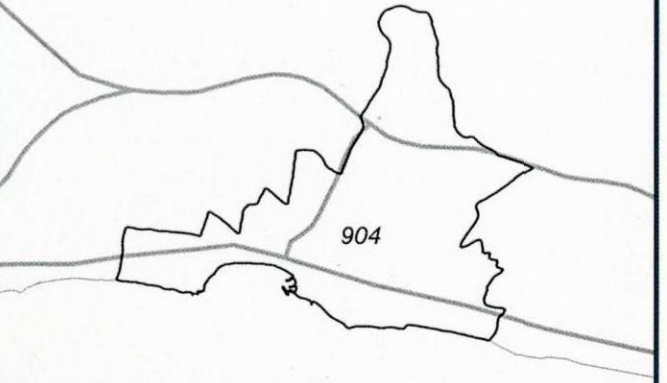


Source : Master Plan 1995, IMM

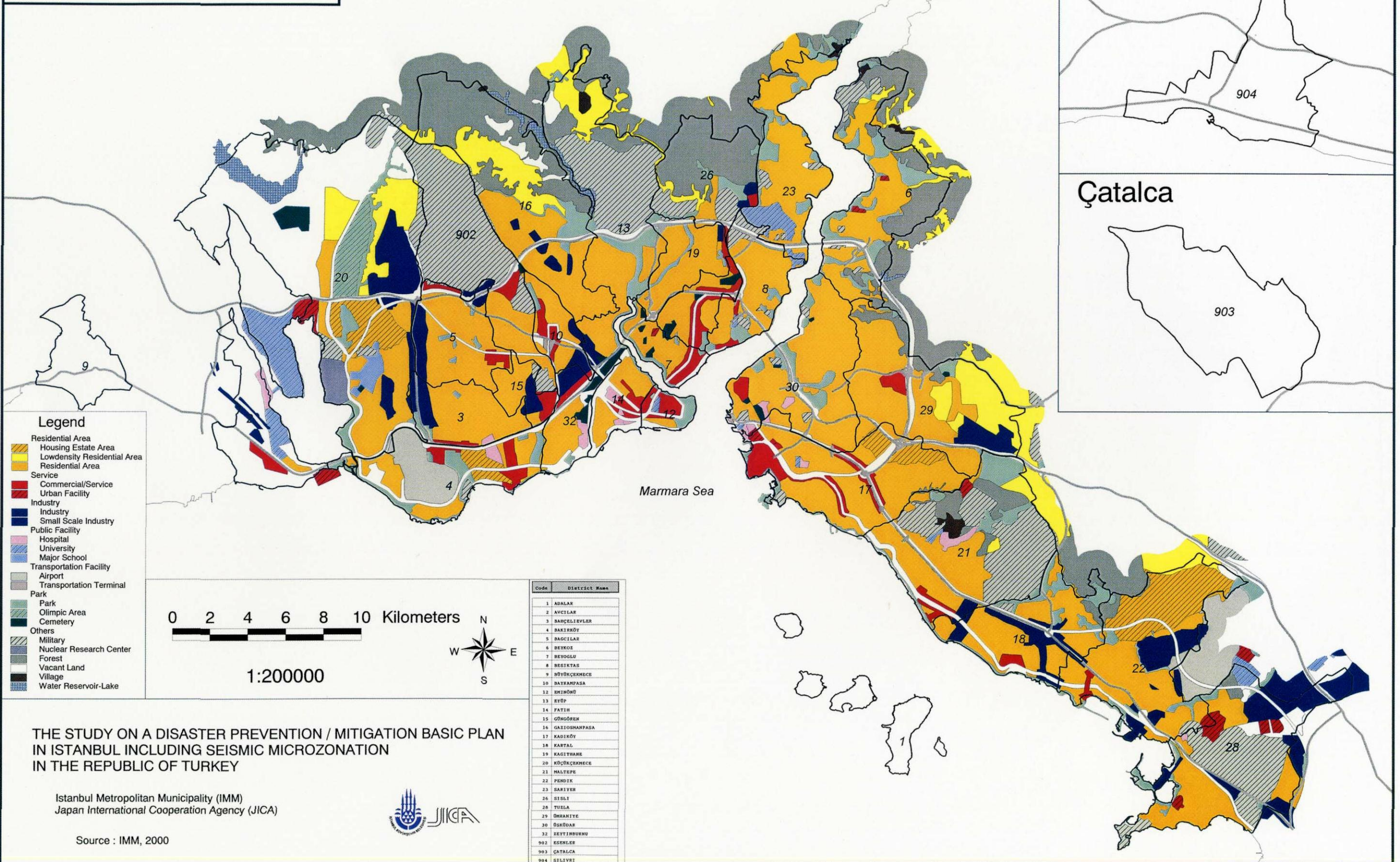
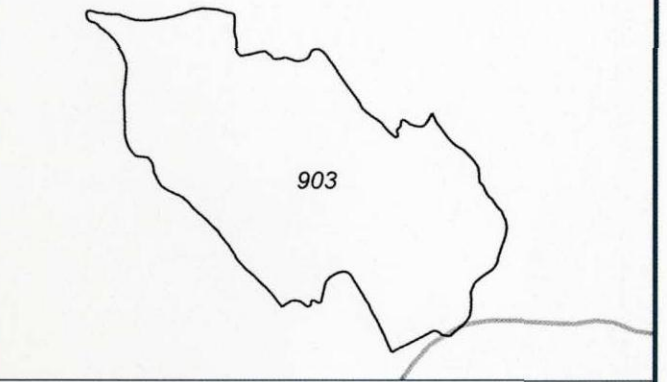
Existing Landuse

Mevcut Arazi Kullanimi

Silivri

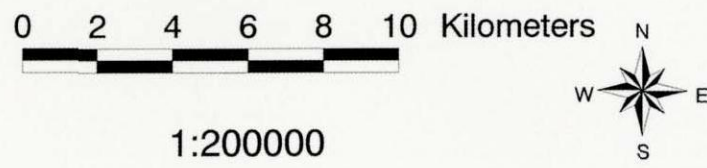


Çatalca



Legend

- Residential Area
 - Housing Estate Area
 - Lowdensity Residential Area
 - Residential Area
- Service
 - Commercial/Service
 - Urban Facility
- Industry
 - Industry
 - Small Scale Industry
- Public Facility
 - Hospital
 - University
 - Major School
- Transportation Facility
 - Airport
 - Transportation Terminal
- Park
 - Park
 - Olympic Area
 - Cemetery
- Others
 - Military
 - Nuclear Research Center
 - Forest
 - Vacant Land
 - Village
 - Water Reservoir-Lake



Code	District Name
1	ADALAR
2	AVCILAR
3	BAGCILIEVLER
4	BAKIRKÖY
5	BAGCILAR
6	BEYOGLU
7	BEYOGLU
8	BESIKTAS
9	BÜYÜKÇEKMECE
10	DAYIRAMPASA
11	EMIRNÖNÜ
12	EYÜP
13	FATİH
14	FATİH
15	GÖNÜDÖREN
16	GARİSOSMANPASA
17	KADIKÖY
18	KARTAL
19	KAGITHANE
20	KÜÇÜKÇEKMECE
21	HALTEPE
22	PENİK
23	SARİYER
24	SİSİLİ
25	TUSLA
26	ÜSKÜDAR
27	ÜSKÜDAR
28	ÜSKÜDAR
29	ÜSKÜDAR
30	ÜSKÜDAR
31	ÜSKÜDAR
32	ÜSKÜDAR
902	ESKİŞEHİR
903	ÇATALCA
904	SİLİVRİ

THE STUDY ON A DISASTER PREVENTION / MITIGATION BASIC PLAN
IN ISTANBUL INCLUDING SEISMIC MICROZONATION
IN THE REPUBLIC OF TURKEY

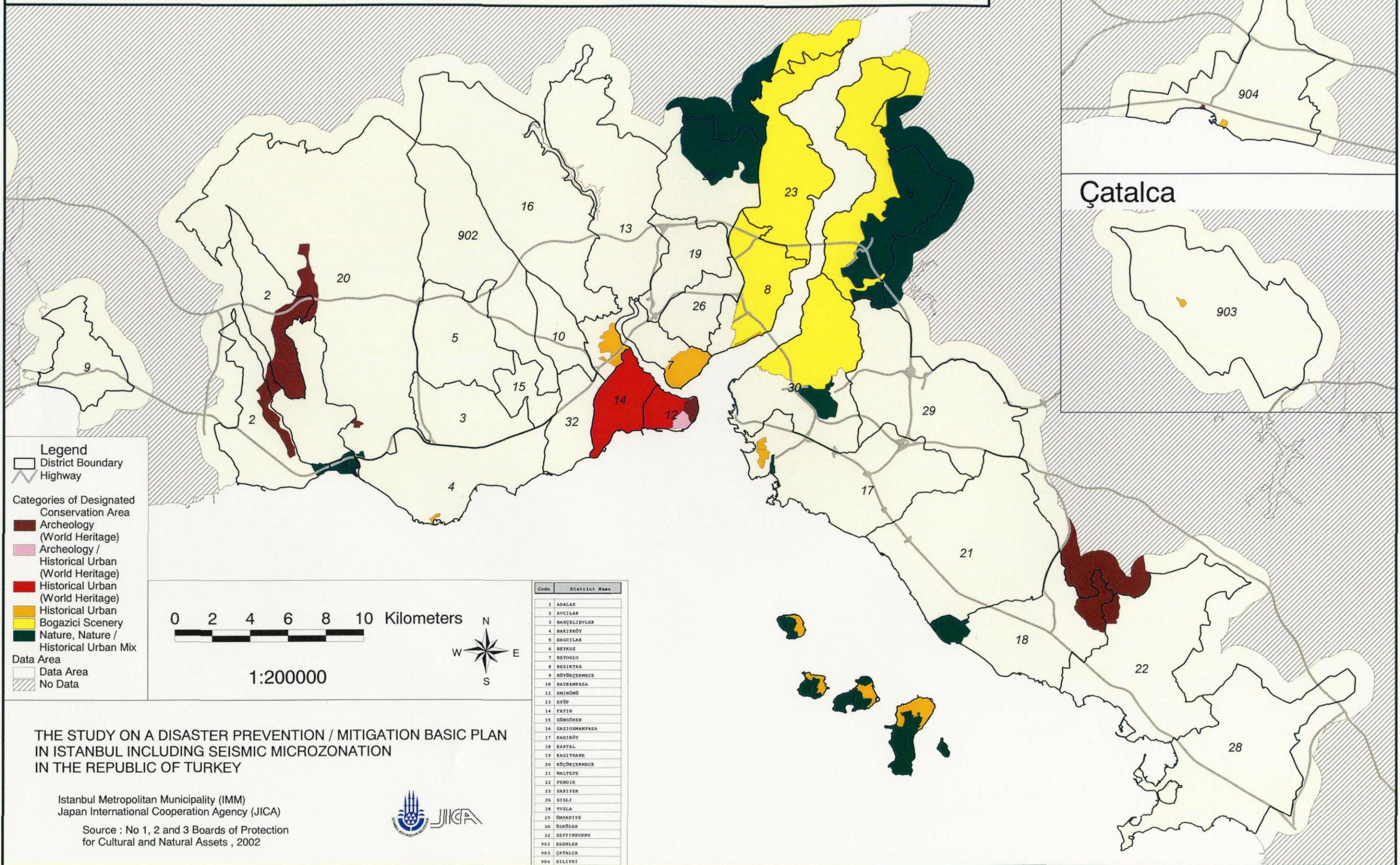
Istanbul Metropolitan Municipality (IMM)
Japan International Cooperation Agency (JICA)



Source : IMM, 2000

Conservation Area (Designated by Conservation Board)

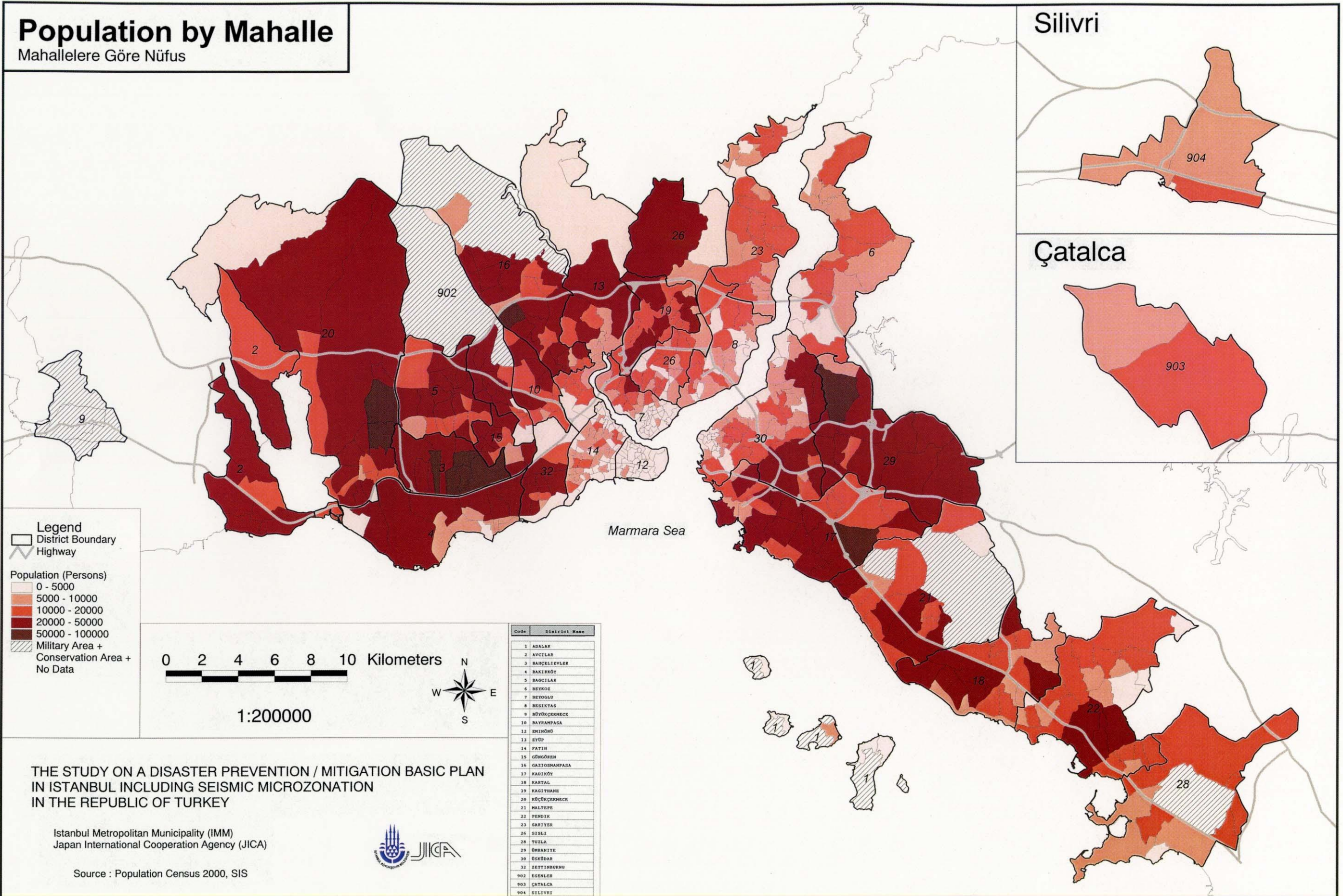
Sit Alanlari



A-11 Conservation Area (Designated by Conservation Board)

Population by Mahalle

Mahallelere Göre Nüfus



THE STUDY ON A DISASTER PREVENTION / MITIGATION BASIC PLAN
IN ISTANBUL INCLUDING SEISMIC MICROZONATION
IN THE REPUBLIC OF TURKEY

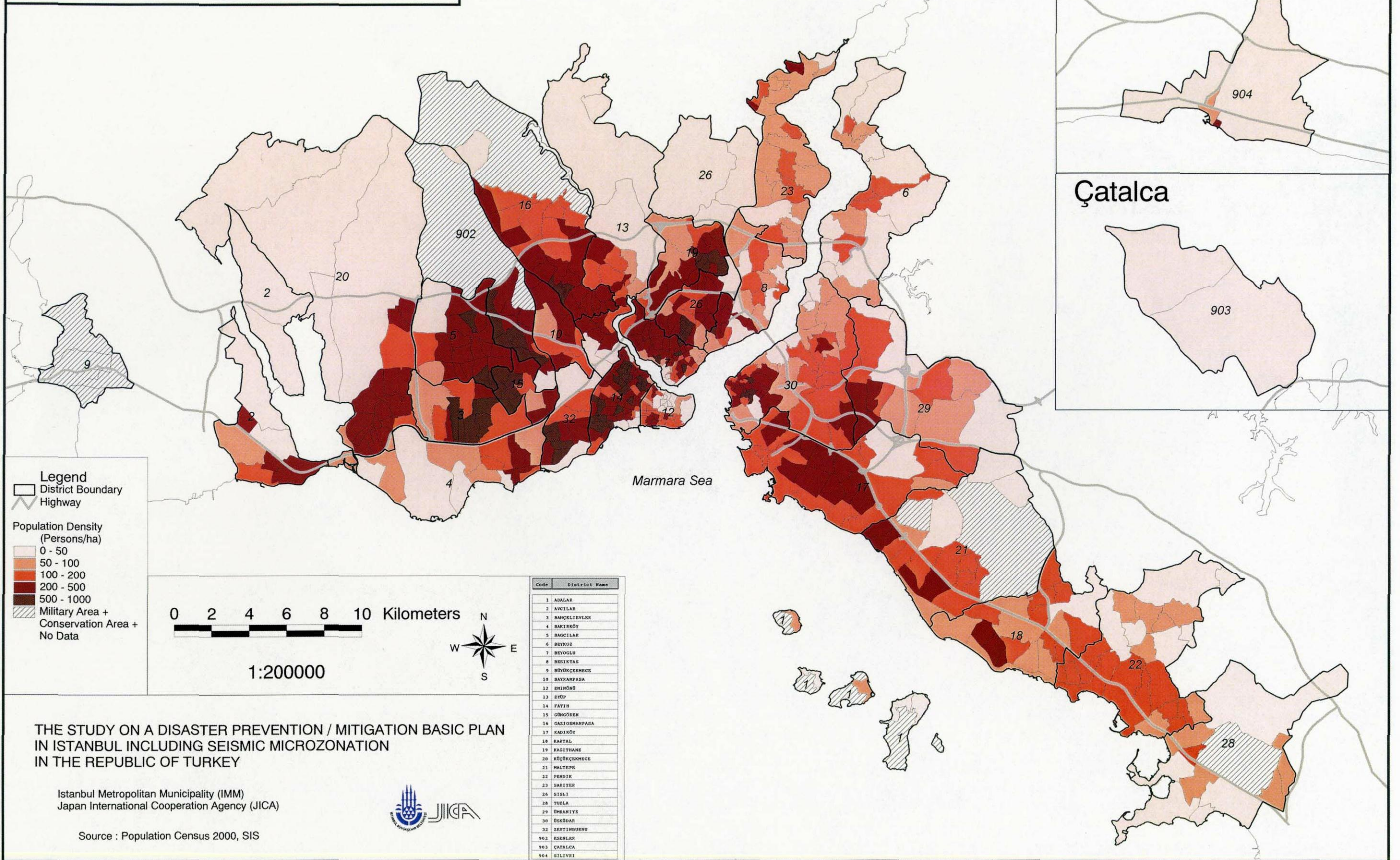
Istanbul Metropolitan Municipality (IMM)
Japan International Cooperation Agency (JICA)



Source : Population Census 2000, SIS

Population Density by Mahalle

Mahallelere Göre Nüfus Yoğunluğu



THE STUDY ON A DISASTER PREVENTION / MITIGATION BASIC PLAN
IN ISTANBUL INCLUDING SEISMIC MICROZONATION
IN THE REPUBLIC OF TURKEY

Istanbul Metropolitan Municipality (IMM)
Japan International Cooperation Agency (JICA)



Source : Population Census 2000, SIS