

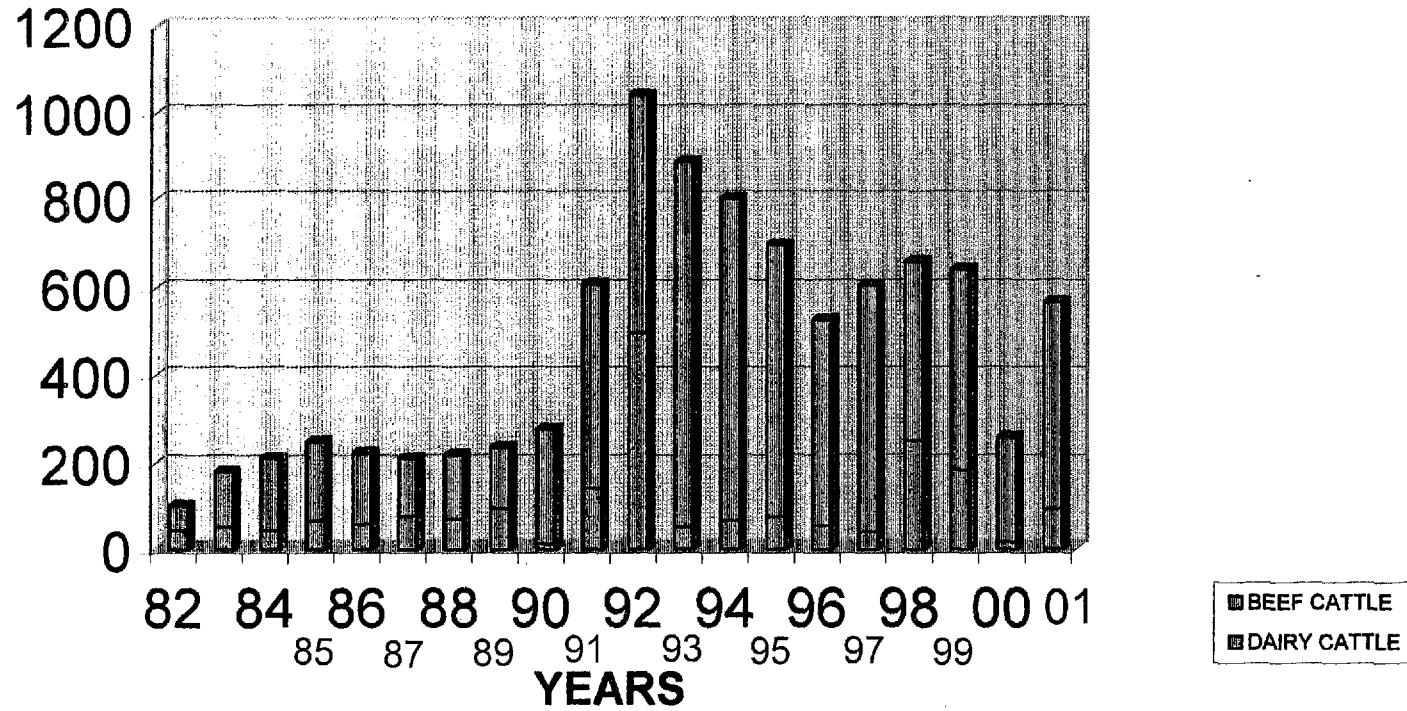
PRODUCTION AND DISTRIBUTION OF FROZEN SEMEN
ARTIFICIAL INSEMINATION CENTRE SINGOSARI

No.	Years	Production (dosage)			Distribution (dosage)			Note
		Dairy cattle	Beef cattle	Total	Dairy cattle	Beef cattle	Total	
1	1982/1983	39.962		39.962	41.482	58.216	99.698	April - March
2	1983/1984	68.367	168.186	236.553	49.873	129.878	179.751	---
3	1984/1985	86.151	177.435	263.586	41.640	169.070	210.710	---
4	1985/1986	110.694	225.374	336.068	65.686	183.472	249.158	---
5	1986/1987	48.542	183.549	232.091	57.438	165.380	222.818	---
	Sub Total	353.716	754.544	1,108.260	256.119	706.016	962.135	
1	1987/1988	88.917	110.083	199.000	75.913	135.635	211.548	---
2	1988/1989	84.382	154.539	238.921	69.863	149.537	219.400	---
3	1989/1990	97.409	137.591	235.000	94.880	142.239	237.119	---
4	1990/1991	30.041	378.784	408.825	12.428	264.825	277.253	---
5	1991/1992	315.140	481.404	796.544	140.864	467.511	608.375	---
6	1992/1993	364.305	596.000	960.305	495.378	544.260	1,039.638	---
7	1993/1994	95.936	904.633	1,000.569	49.984	836.231	886.215	---
8	1994/1995	97.080	804.545	901.625	65.041	735.044	800.085	---
9	1995/1996	77.048	767.022	844.070	74.580	622.900	697.480	---
10	1996/1997	-	426.088	426.088	53.615	473.188	526.803	---
11	1997/1998	26.860	379.452	406.312	40.624	565.089	605.713	---
12	1998/1999	23.797	348.134	371.931	251.490	407.920	659.410	---
13	1999/2000	189.998	805.088	995.086	183.357	459.034	642.391	---
14	2000	56.089	297.789	353.878	15.685	243.717	259.402	April - December
15	2001	81.322	443.867	525.189	92.752	474.846	567.598	January - December
	Sub Total	1,628.324	7,035.019	8,663.343	1,716.454	6,521.976	8,238.430	
	Total	1,982.040	7,789.563	9,771.603	1,972.573	7,227.992	9,200.565	

3. 凍結精液の生産・出荷状況
(1) 凍結精液の生産・出荷本数 (年間)

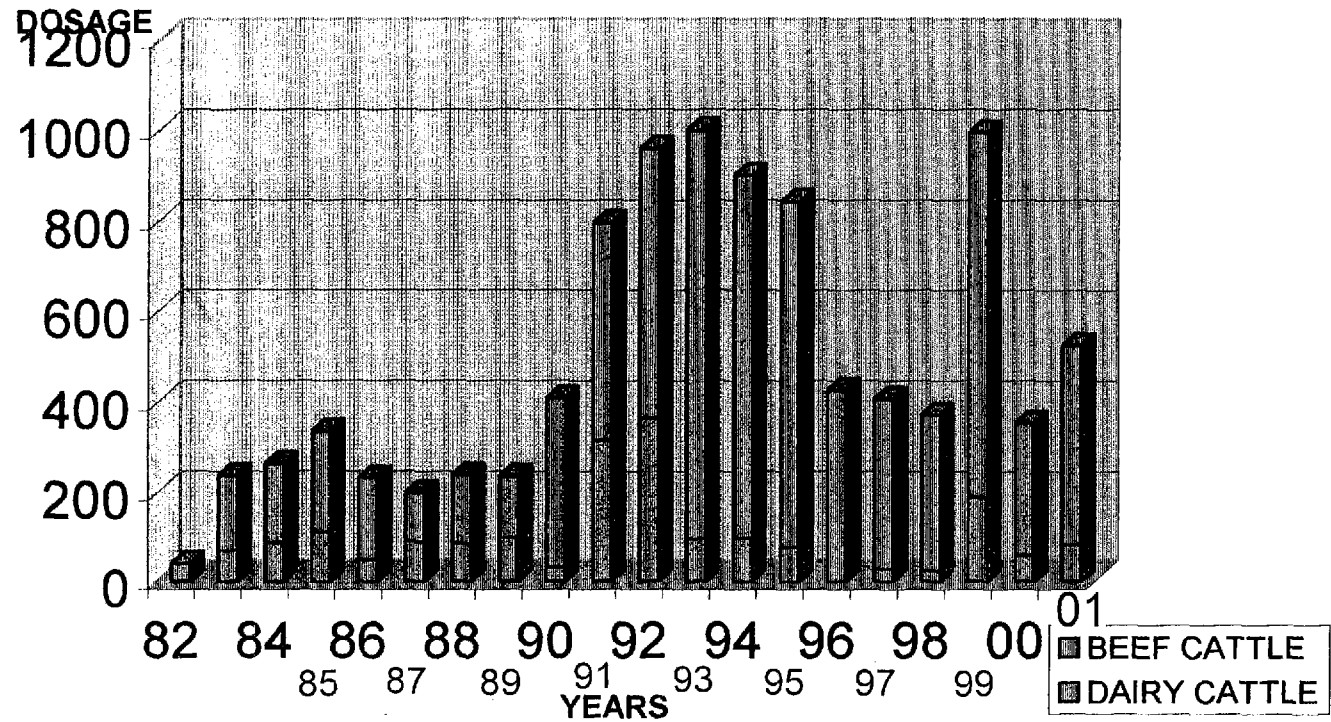
DISTRIBUTION OF FROZEN SEMEN AIC SINGOSARI

DOSAGE



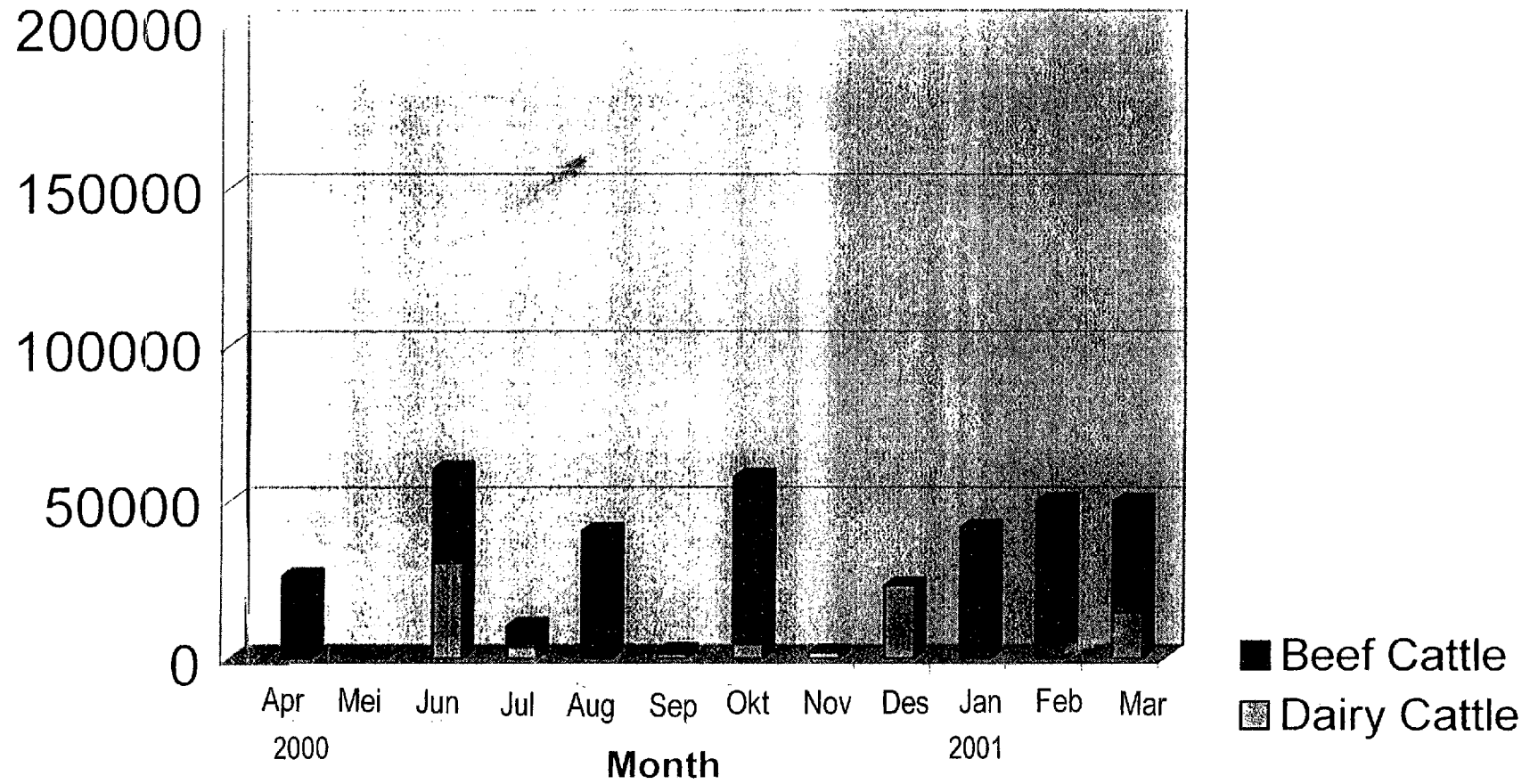
Note : 82 - 99 April - March
2000 April - December
2001 January - December

PRODUCTION OF FROZEN SEMEN AIC SINGOSARI

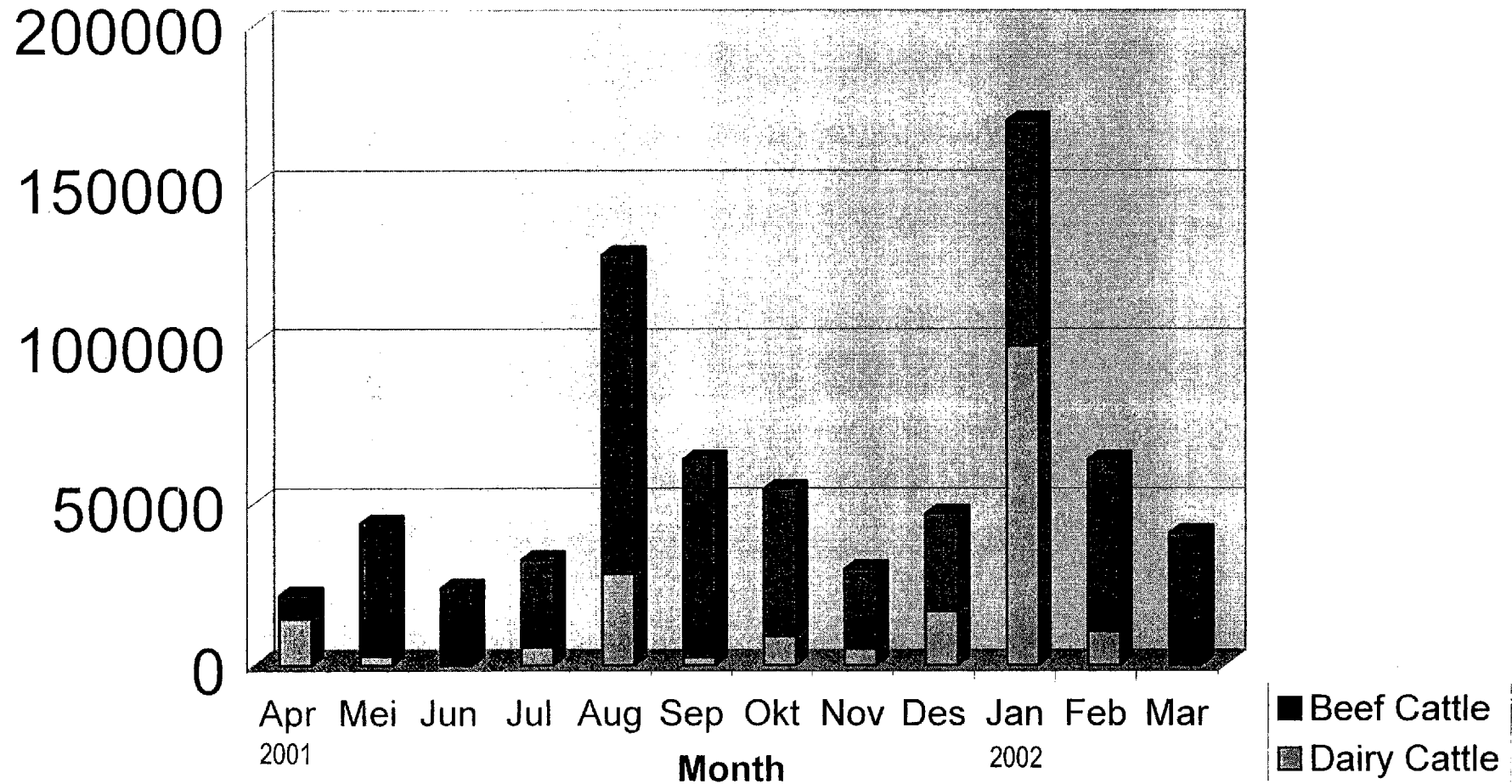


Note : 82 - 99 April - March
2000 April - December
2001 January - December

Distribution of Frozen Semen (April 2000 - March 2001)



Distribution of Frozen Semen (April 2001 - March 2002)



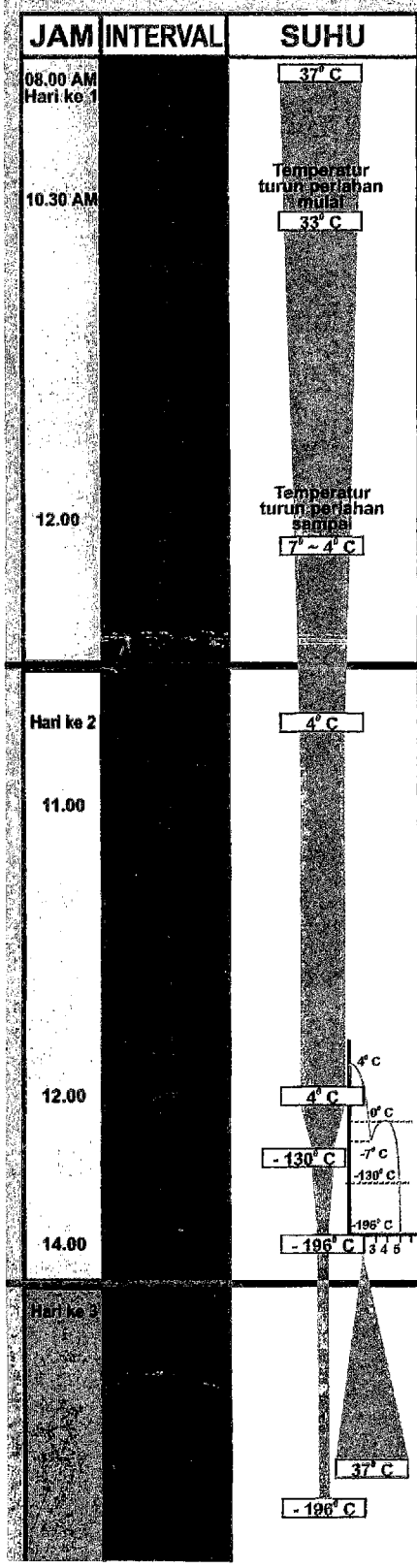
PROSES PRODUKSI SEMEN BEKU

Balai Inseminasi Buatan Singosari



JAPAN INTERNATIONAL COOPERATION AGENCY

BALAI INSEMINASI BUATAN SINGOSARI



Memandikan Sapi Dan Mencuci Preputium



Bangsa Sapi/Pejantan : FH, Bali, Madura, Ongole, Brahman, Simental, Limousin, Brangus, Angus

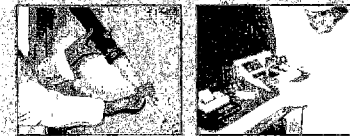
Penampungan Semen

Tiap pejantan ditampung 1 kali tiap minggu, 2 - 3 kali ejakulasi



Evaluasi Makroskopis

- Warna : Cream-Putih Susu-Kuning Muda
- PH : 6,2 - 6,8
- Volume : 2 - 10 ml
- Konsentrasi
- Bau

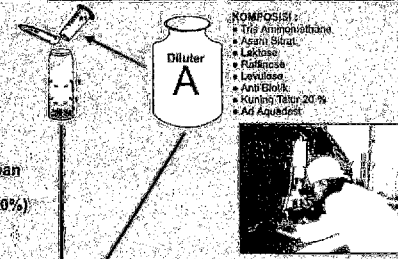


Pre Dilution (A1)

Semen segar ditambah Diluter A1
Semen segar : A1 = 1 : 1

Evaluasi Mikroskopis

- Gerak / Motilitas Progresif maju ke depan (-) +++ 70%
- Pemeriksaan Morfologi (% Abnormal 10%)
- Jumlah Spermia / Straw (0,25 ml) 25 x 10⁶ Spermia



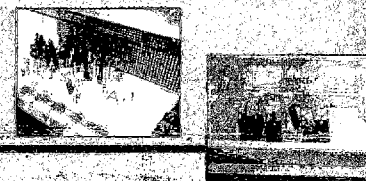
Diluter A

KOMPOSISI :

- Triis Arabinoside
- Asam Sitrat
- Laktosa
- Puffinosa
- Levulosa
- Asam Glisarat
- Kuning Telur 20%
- Ad Aquadest

Diluter A2

Filtrasi Semen
- Penambahan Diluter A2 (1/2 dari total Volume)
7° C-4° C



Diluter B

Glycerol Equilibrasi
Diluter A + Glycerol 13%



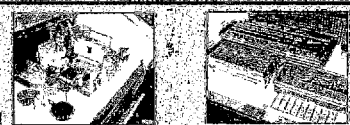
Evaluasi Before Freezing

Motilitas Progresif +++ 55%

Printing Straw

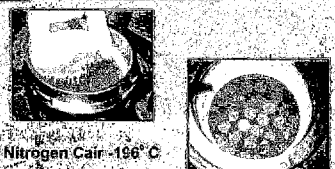


Injection and Sealing dengan Ultra Sonic Filling - Sealing Machine



Præ Freezing

Meletakkan rak straw di atas Nitrogen Cair 5 cm (diap Nitrogen) 4° ~ -130° C



Freezing

Direndam dalam Nitrogen Cair -196° C

Evaluasi

- Motilitas ≥ 40%
- Jumlah Spermia Motil: 10.000.000 / ds

Storage

Distribution

