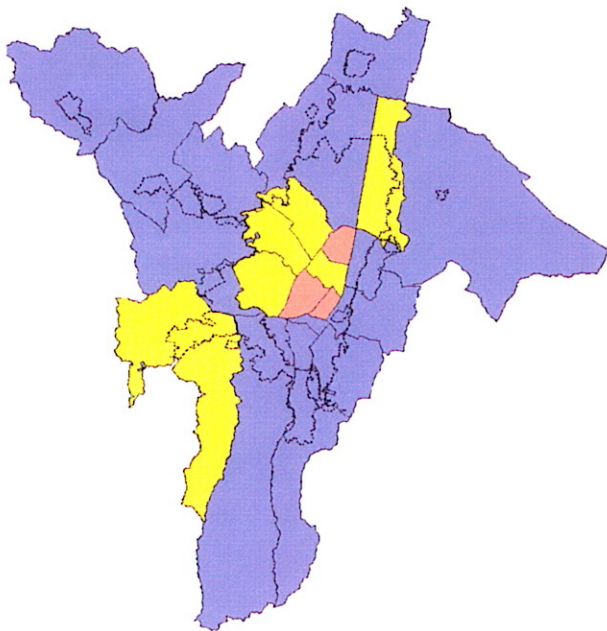


La Cajita Fault Model

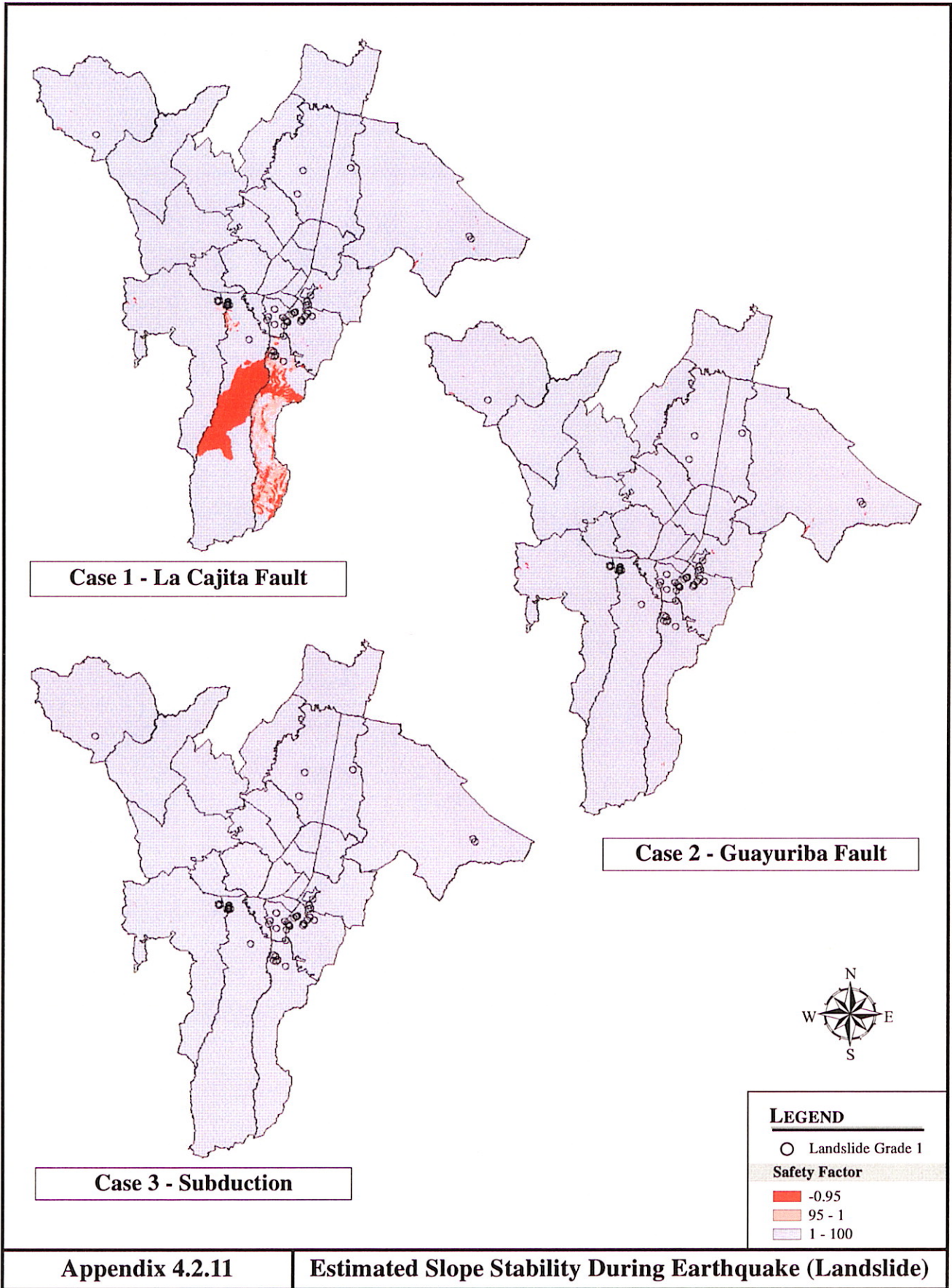


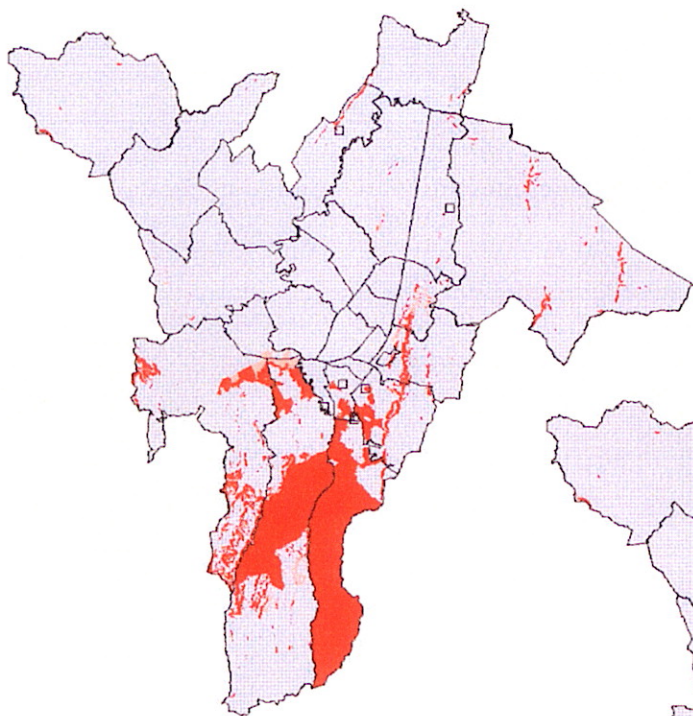
Guayuriba Fault Model



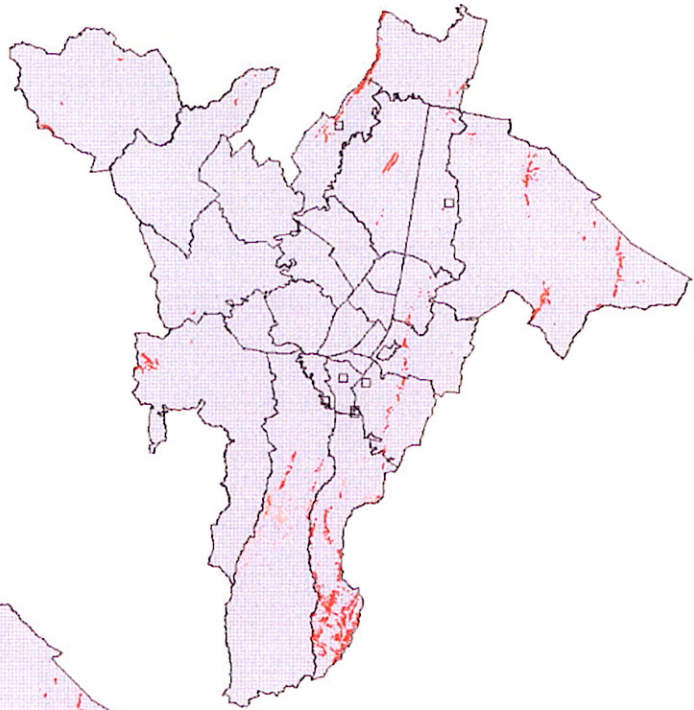
LEGEND

- Seismic Risk
- High
 - Medium
 - Low

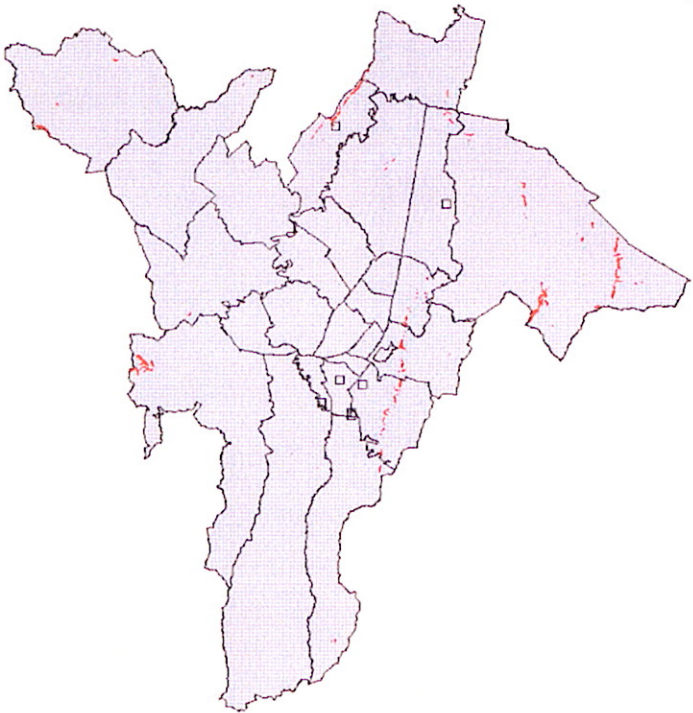




Case 1 - La Cajita



Case 2 - Guayuriba



Case 3 - Subduction



LEGEND	
	Flow Grade 1
Safety Factor	
	-0.95
	95 - 1
	1 - 100