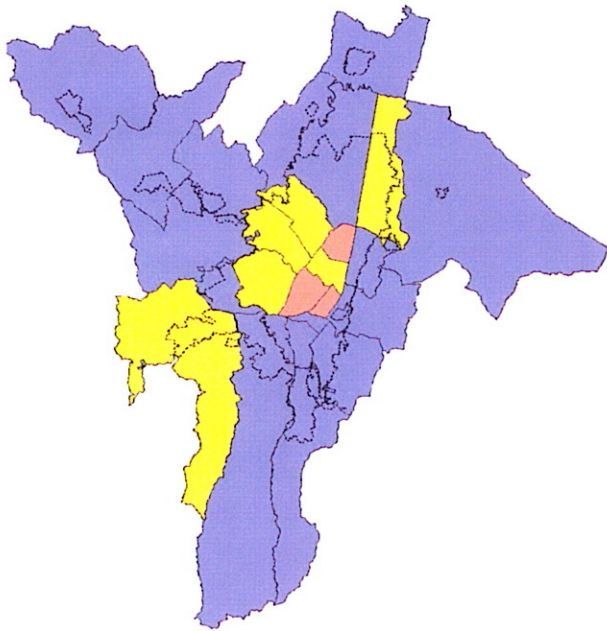


La Cajita Fault Model



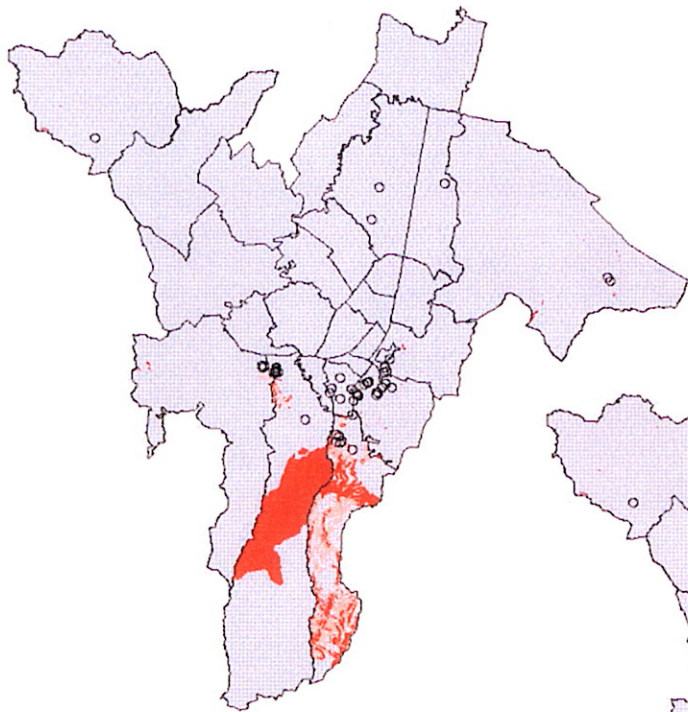
Guayuriba Fault Model



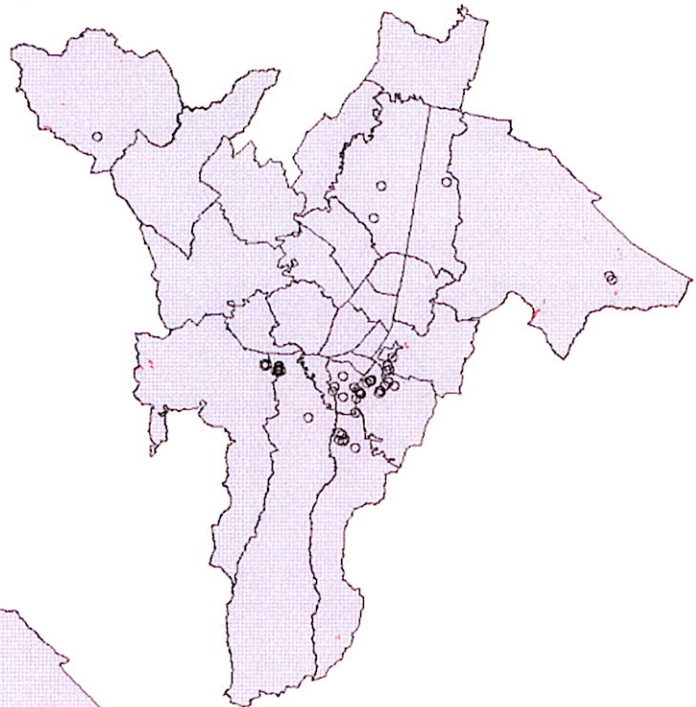
LEGEND

Seismic Risk

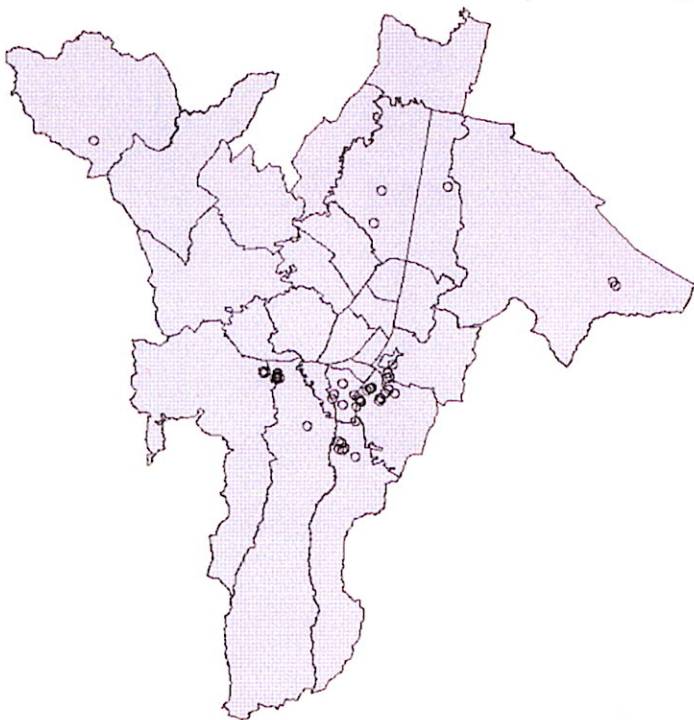
- High
- Medium
- Low



Case 1 - La Cajita Fault



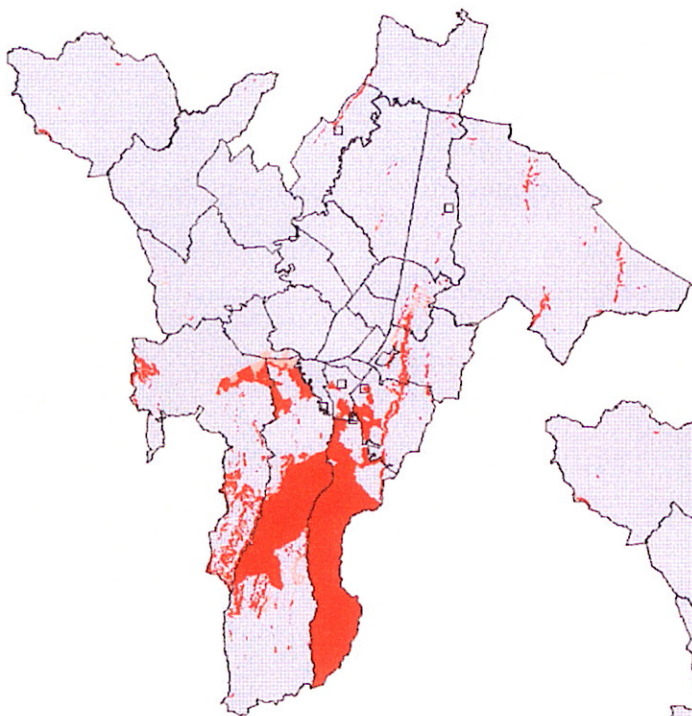
Case 2 - Guayuriba Fault



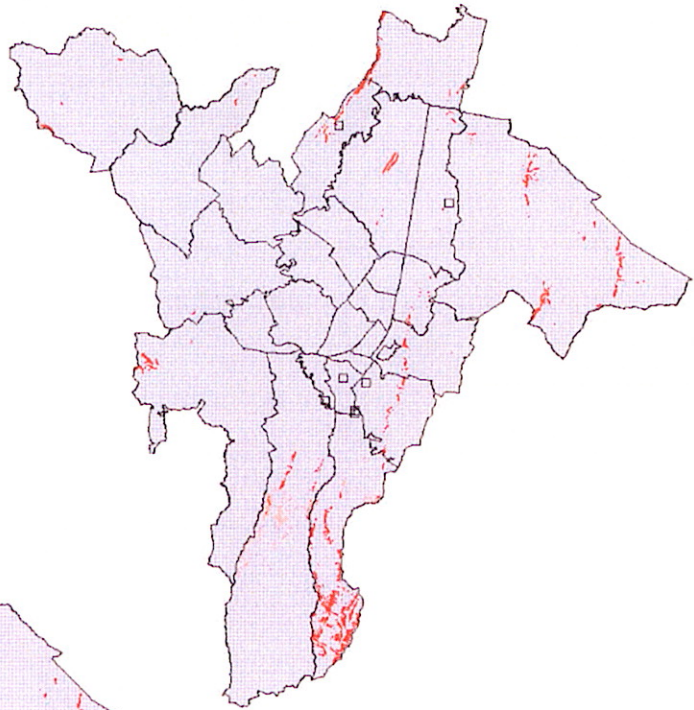
Case 3 - Subduction



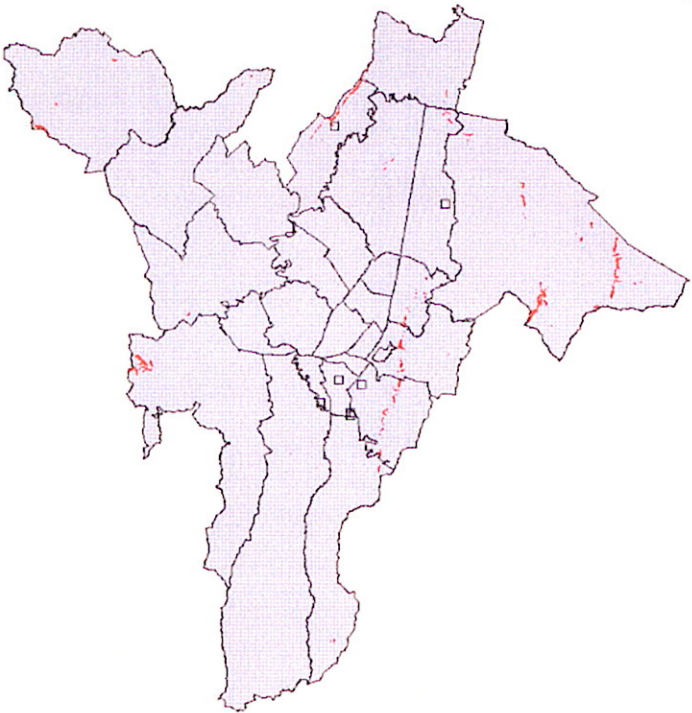
LEGEND	
○	Landslide Grade 1
Safety Factor	
■ (Red)	-0.95
■ (Light Red)	95 - 1
■ (Light Purple)	1 - 100



Case 1 - La Cajita



Case 2 - Guayuriba



Case 3 - Subduction



LEGEND	
	Flow Grade 1
Safety Factor	
	-0.95
	95 - 1
	1 - 100