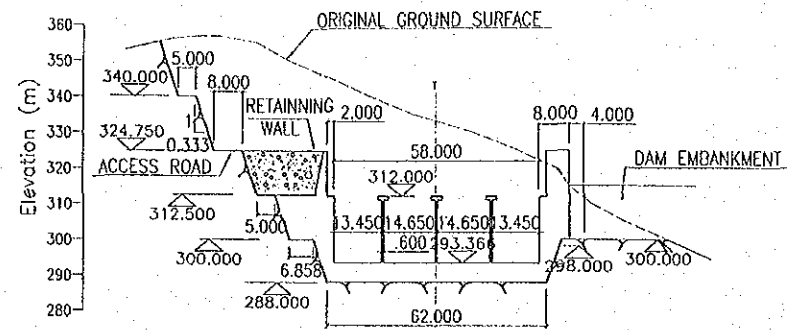
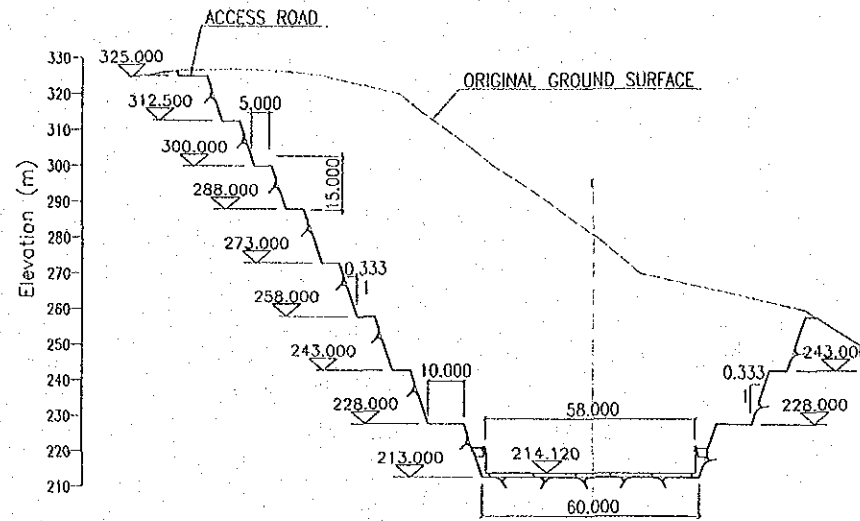


FEASIBILITY STUDY
 ON THE NAM NGIEP-1 HYDROELECTRIC POWER PROJECT (Phase II)
 IN THE LAO PEOPLE'S DEMOCRATIC REPUBLIC
 JAPAN INTERNATIONAL COOPERATION AGENCY

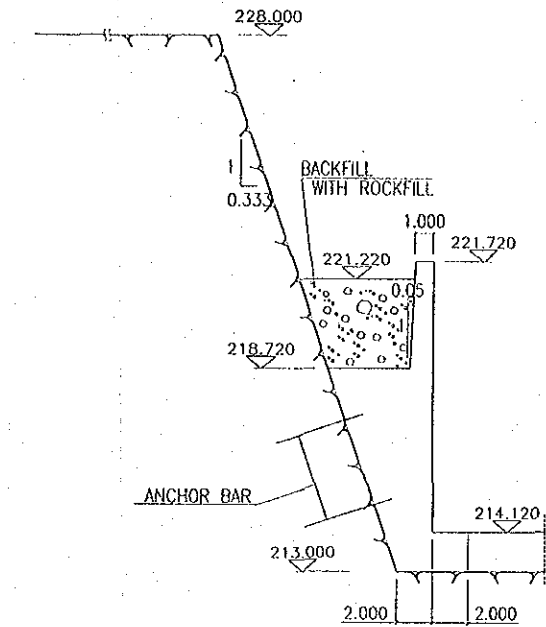
DWG. 14
 River Diversion Works, Inlet Structure
 and Section of Tunnel No.2



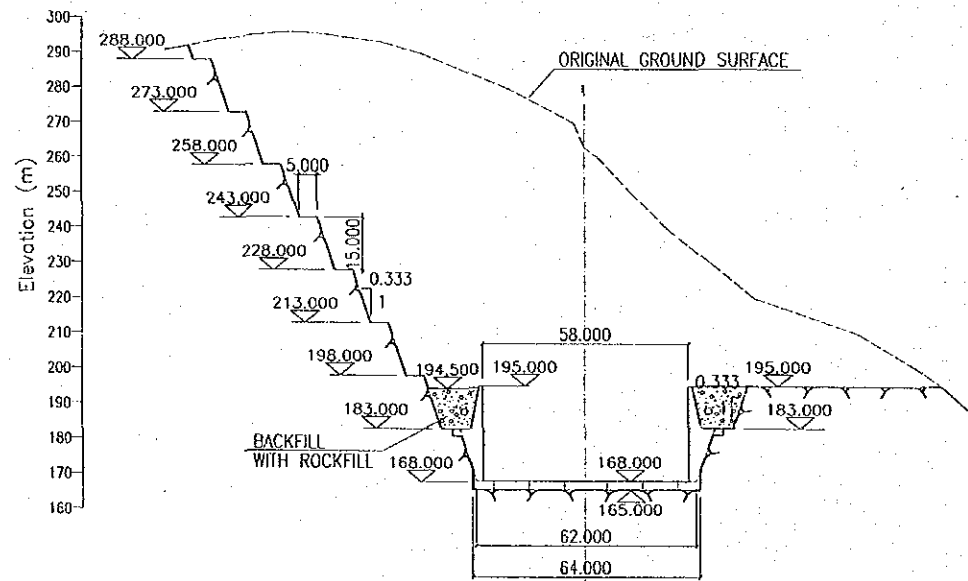
SECTION OF SPILLWAY, CHAIN. 0+030.000
SCALE A



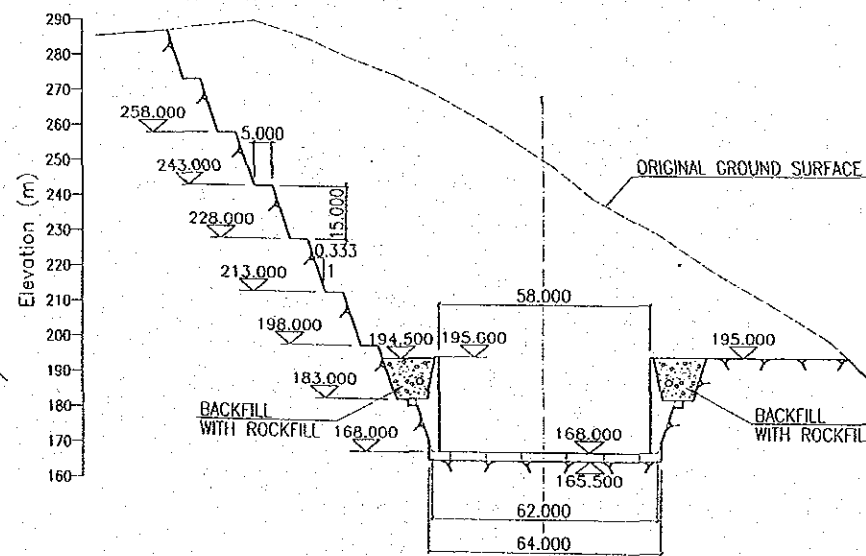
SECTION OF SPILLWAY, CHAIN. 0+187.795
SCALE A



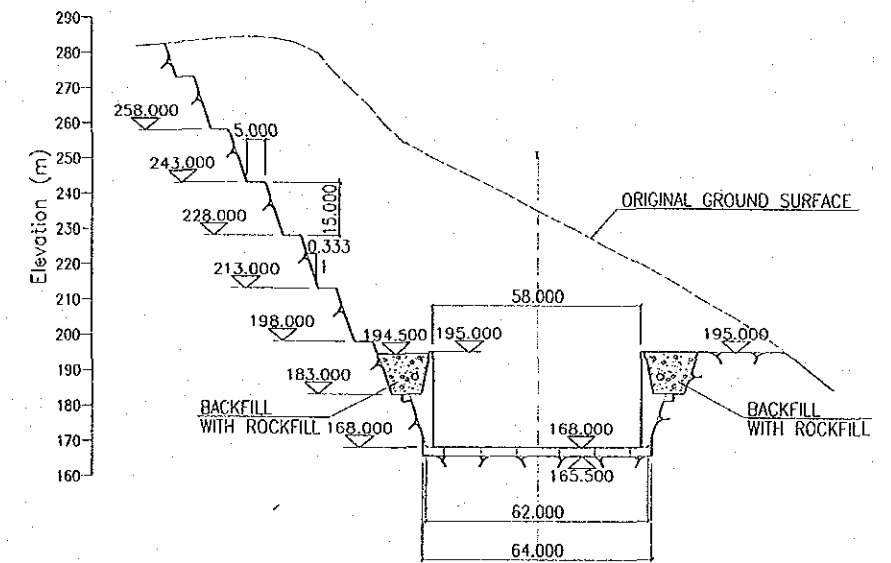
SECTION OF TRAINING WALL
SCALE B



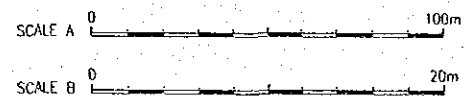
SECTION OF SPILLWAY, CHAIN. 0+279.628
(BEGINNING OF STILLING BASIN)
SCALE A



SECTION OF SPILLWAY, CHAIN. 0+310.000
SCALE A



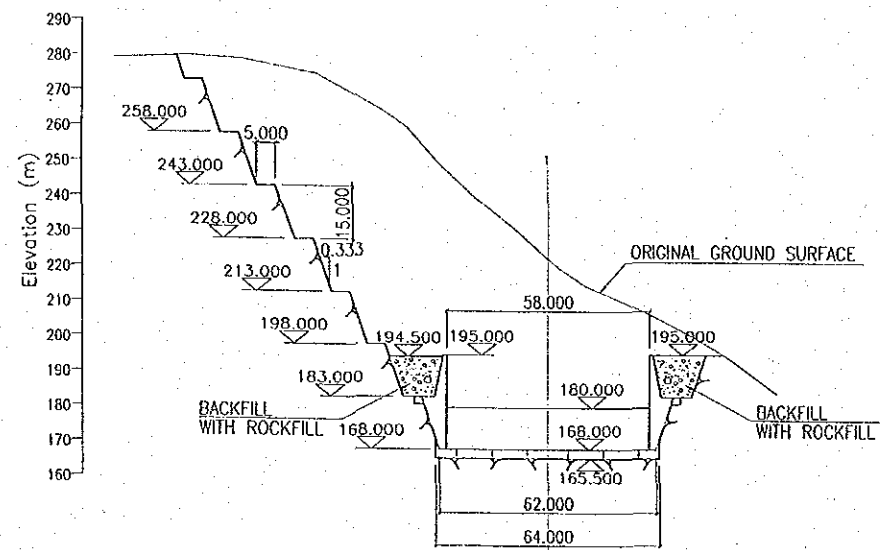
SECTION OF SPILLWAY, CHAIN. 0+340.000
SCALE A



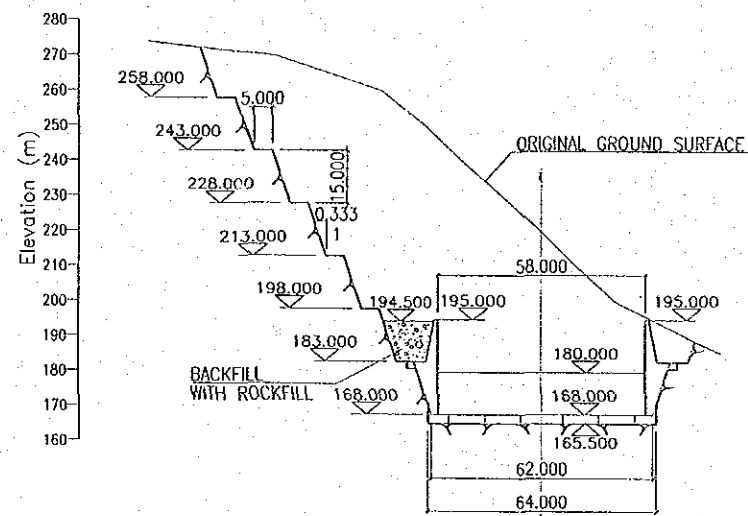
FEASIBILITY STUDY
ON THE NAM NGIEP-1 HYDROELECTRIC POWER PROJECT (Phase II)
IN THE LAO PEOPLE'S DEMOCRATIC REPUBLIC
JAPAN INTERNATIONAL COOPERATION AGENCY

DWG. 16

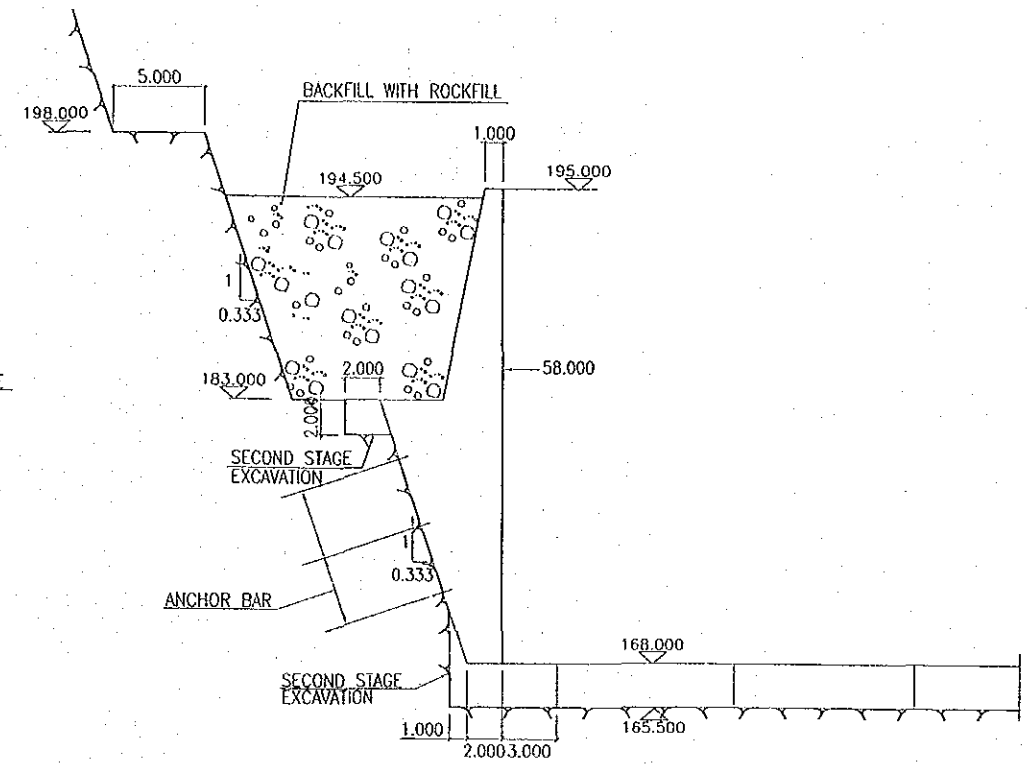
Spillway Sections (1)



SECTION OF SPILLWAY, CHAIN. 0+370.000
SCALE A



SECTION OF SPILLWAY, CHAIN. 0+394.000
(END OF STILLING BASIN)
SCALE A



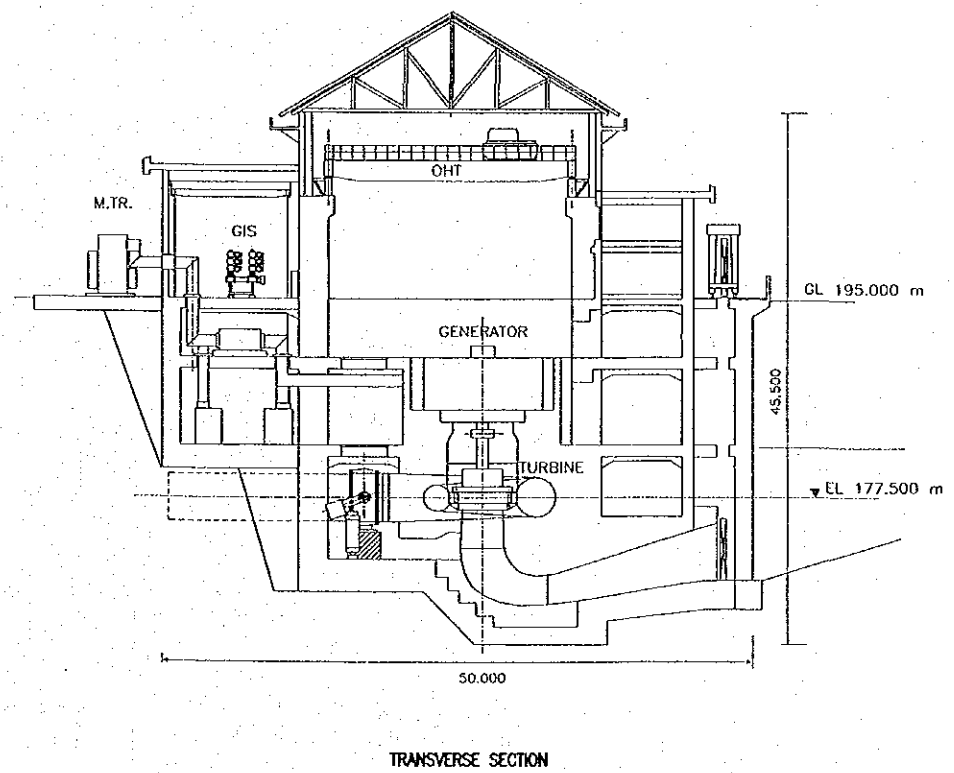
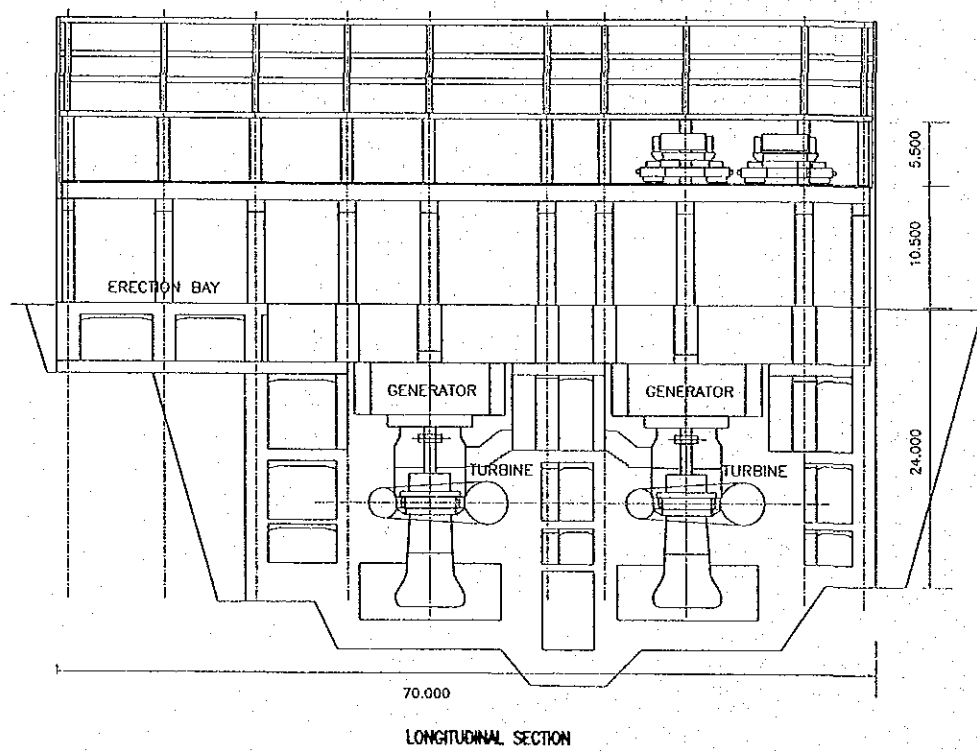
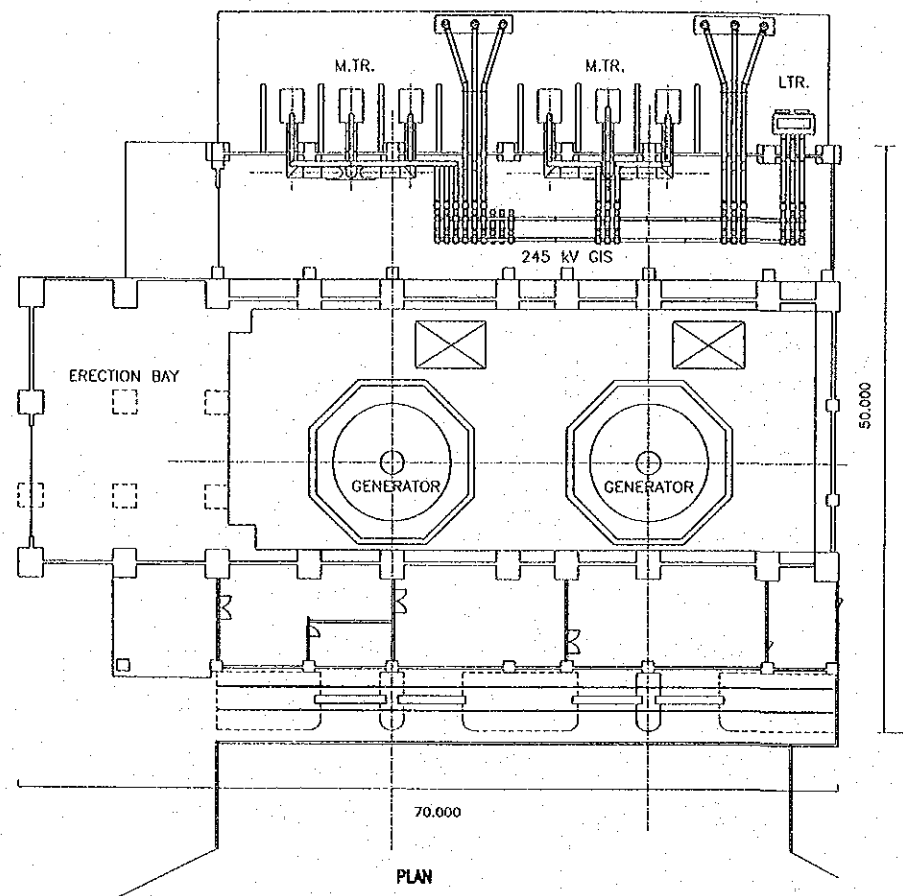
SECTION OF TRAINING WALL AT STILLING BASIN
SCALE B



FEASIBILITY STUDY
ON THE NAM NGIEP-1 HYDROELECTRIC POWER PROJECT (Phase II)
IN THE LAO PEOPLE'S DEMOCRATIC REPUBLIC
JAPAN INTERNATIONAL COOPERATION AGENCY

DWG. 17

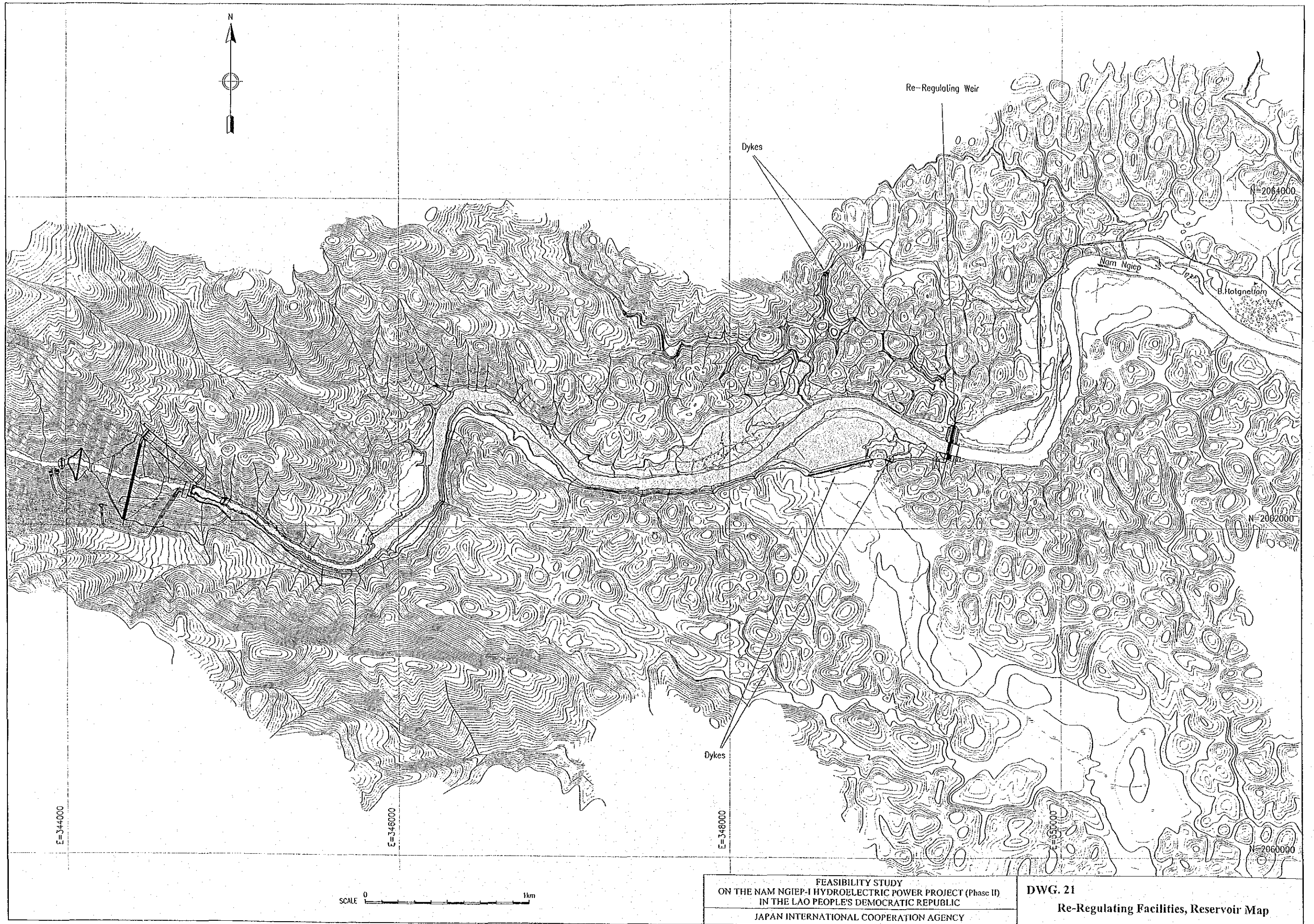
Spillway Sections (2)



SCALE 0 30m

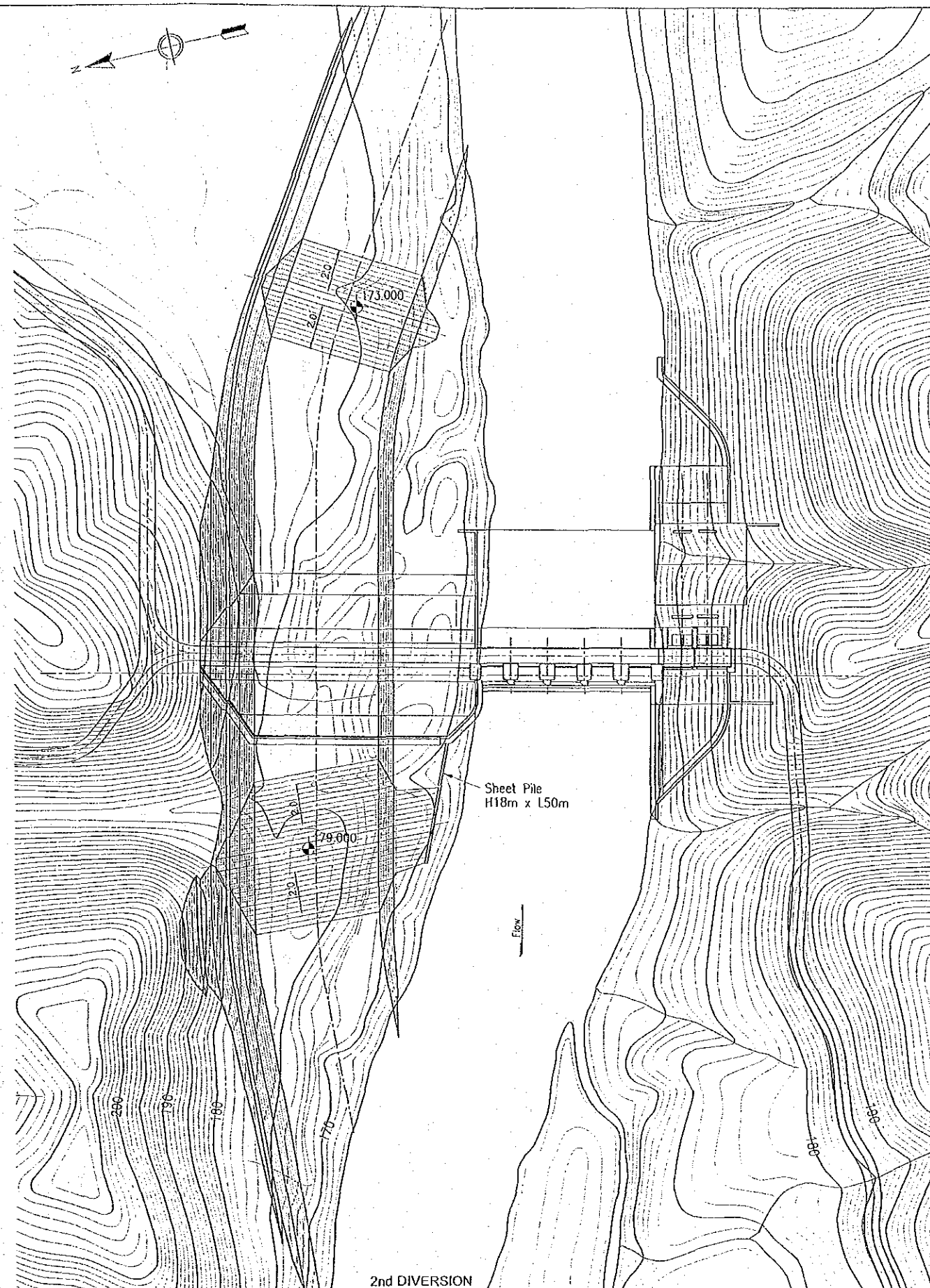
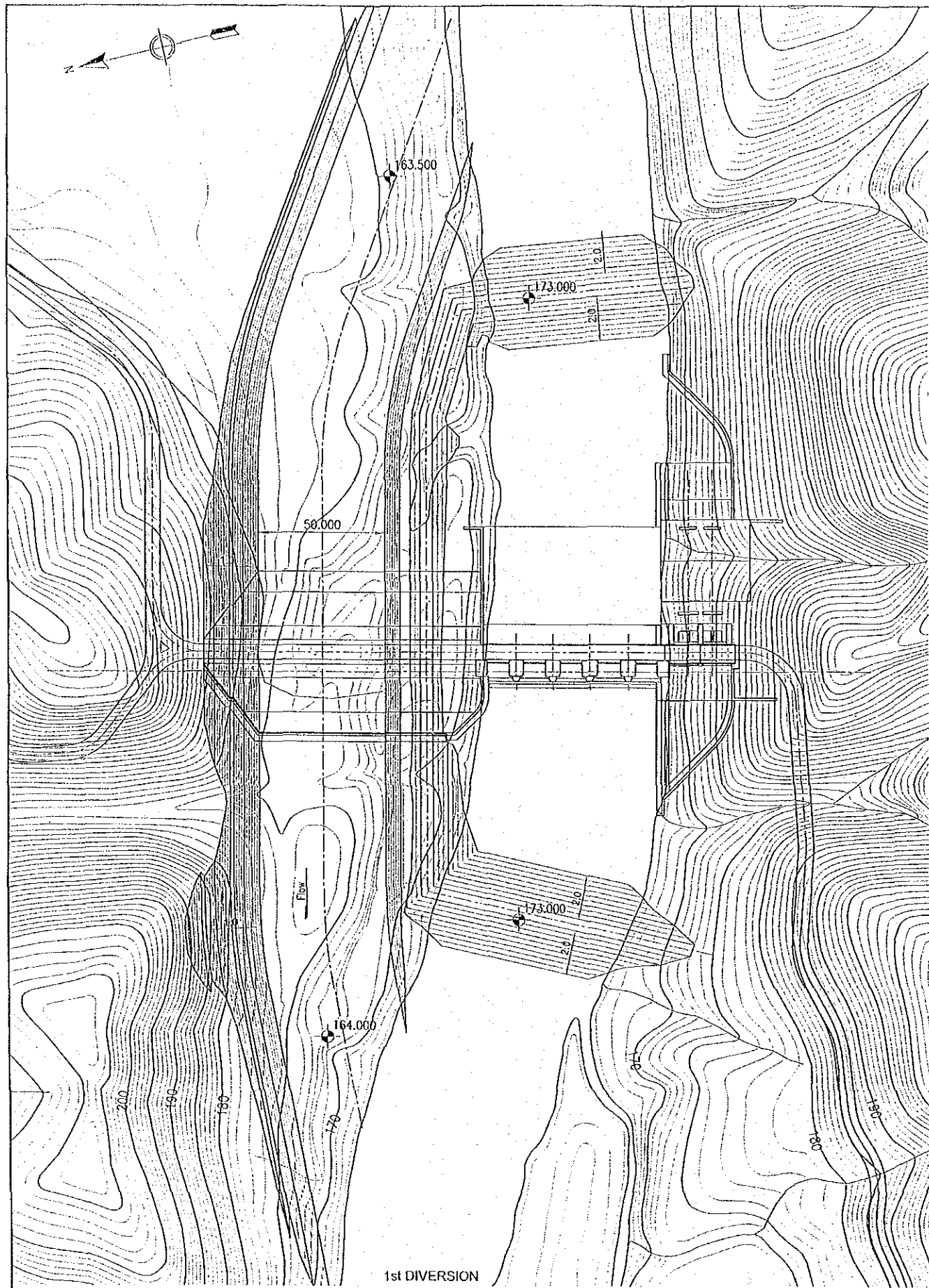
FEASIBILITY STUDY
ON THE NAM NGIEP-I HYDROELECTRIC POWER PROJECT (Phase II)
IN THE LAO PEOPLE'S DEMOCRATIC REPUBLIC
JAPAN INTERNATIONAL COOPERATION AGENCY

DWG. 20
Powerhouse(Main Dam), Plan and Sections



FEASIBILITY STUDY
 ON THE NAM NGIEP-I HYDROELECTRIC POWER PROJECT (Phase II)
 IN THE LAO PEOPLE'S DEMOCRATIC REPUBLIC
 JAPAN INTERNATIONAL COOPERATION AGENCY

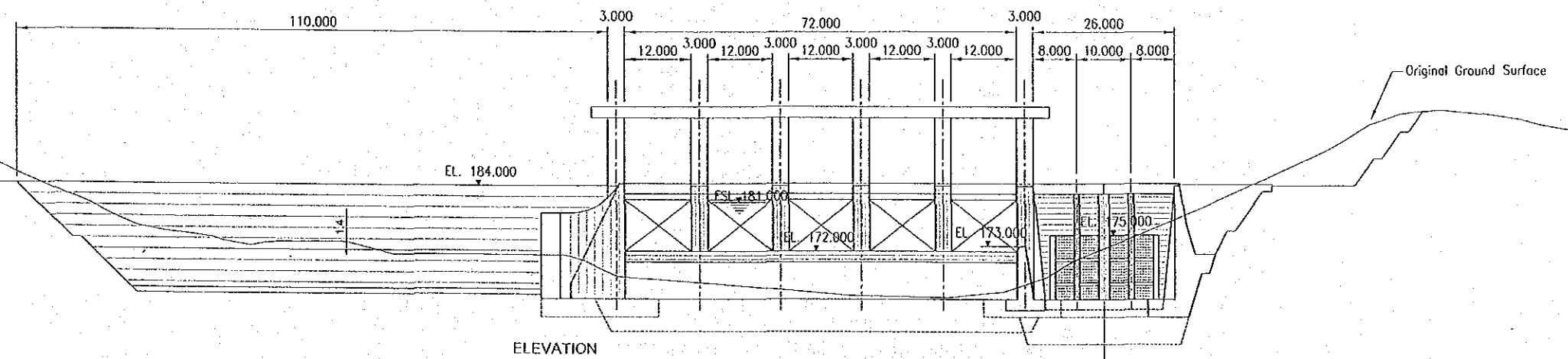
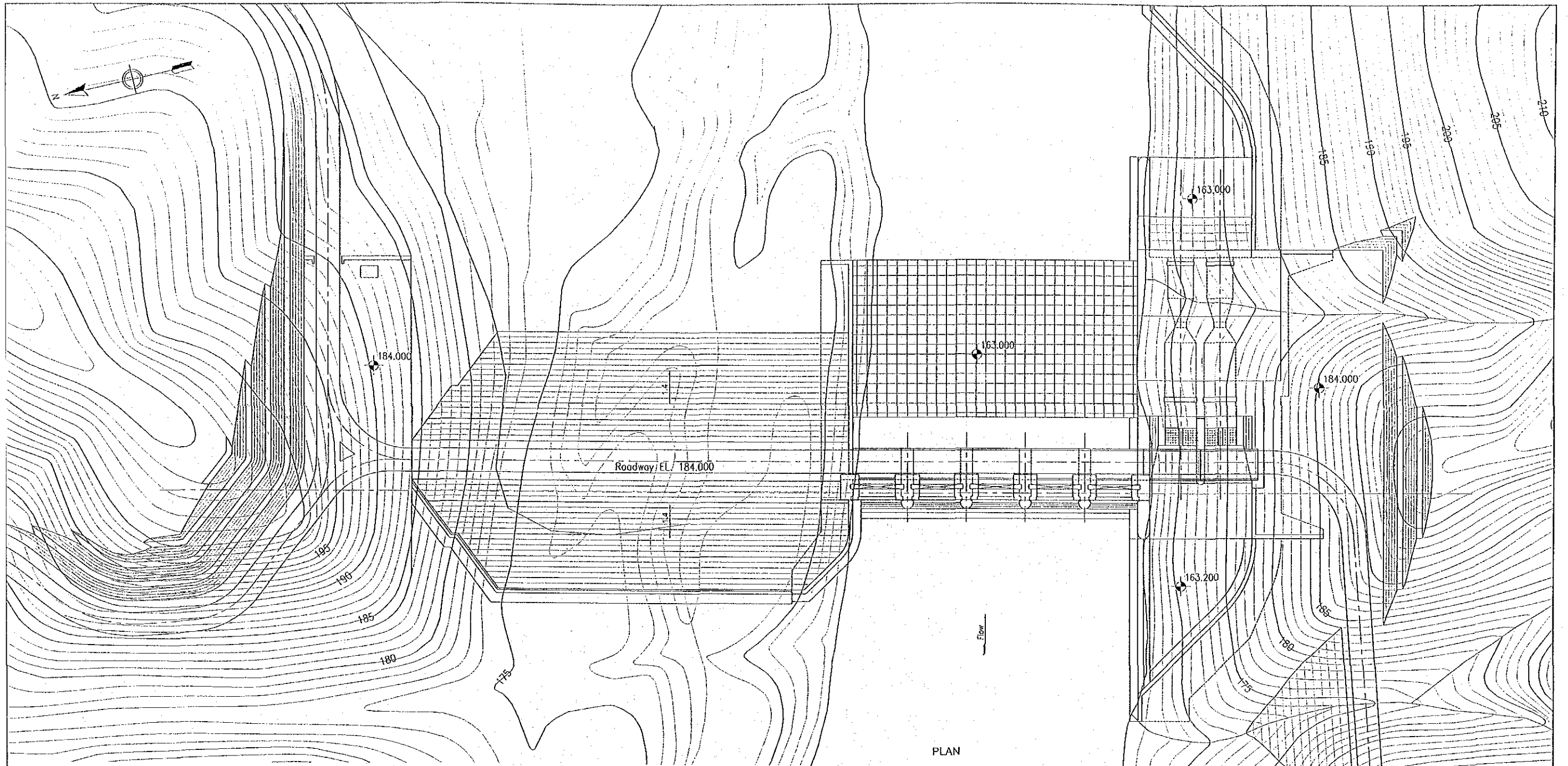
DWG. 21
 Re-Regulating Facilities, Reservoir Map



SCALE 0 100m

FEASIBILITY STUDY
 ON THE NAM NGIEP-I HYDROELECTRIC POWER PROJECT (Phase II)
 IN THE LAO PEOPLE'S DEMOCRATIC REPUBLIC
 JAPAN INTERNATIONAL COOPERATION AGENCY

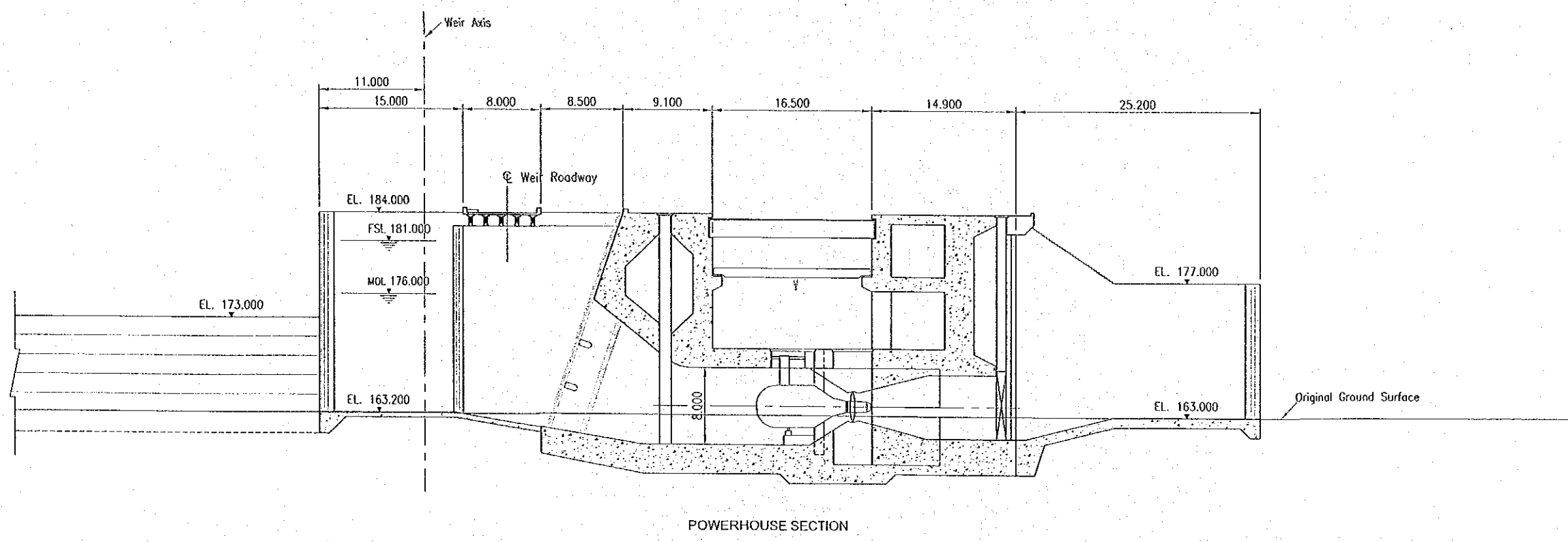
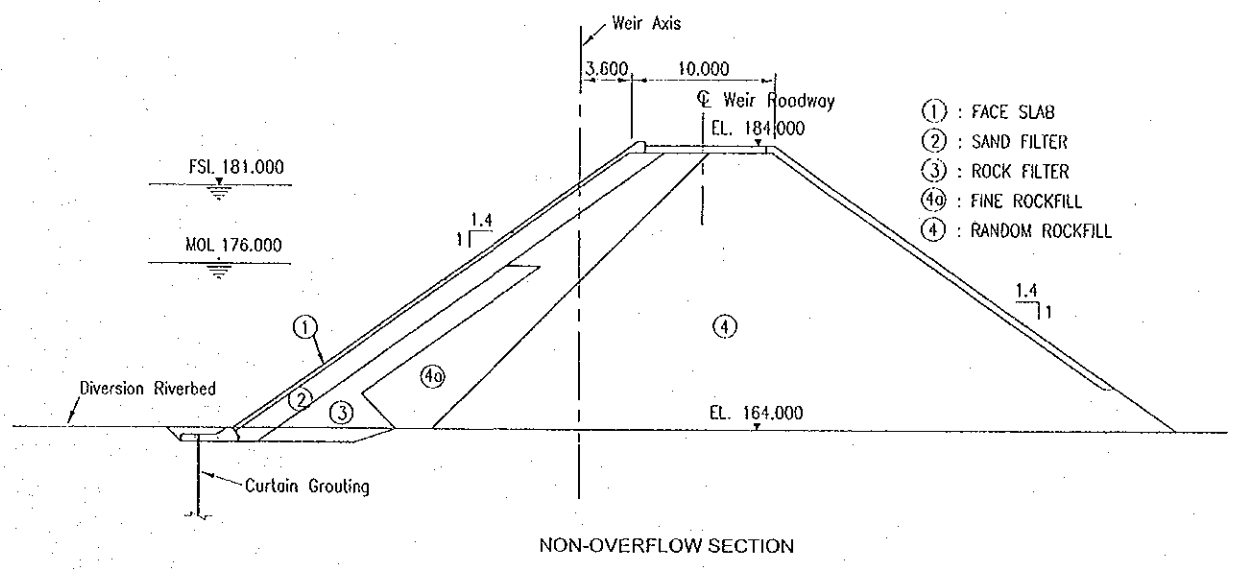
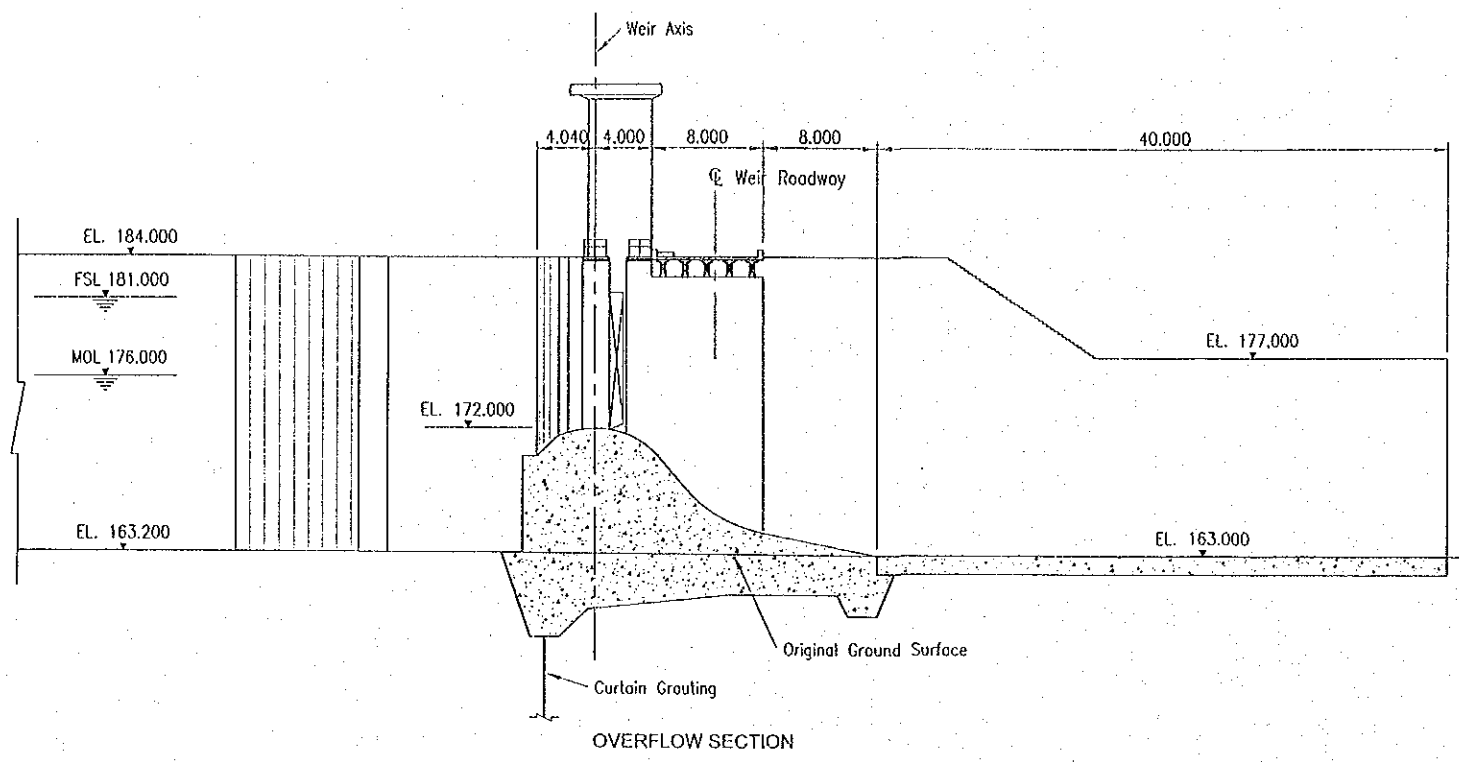
DWG. 22
 Re-Regulating Facilities, River Diversion



SCALE 0 50m

FEASIBILITY STUDY
ON THE NAM NGIEP-I HYDROELECTRIC POWER PROJECT (Phase II)
IN THE LAO PEOPLE'S DEMOCRATIC REPUBLIC
JAPAN INTERNATIONAL COOPERATION AGENCY

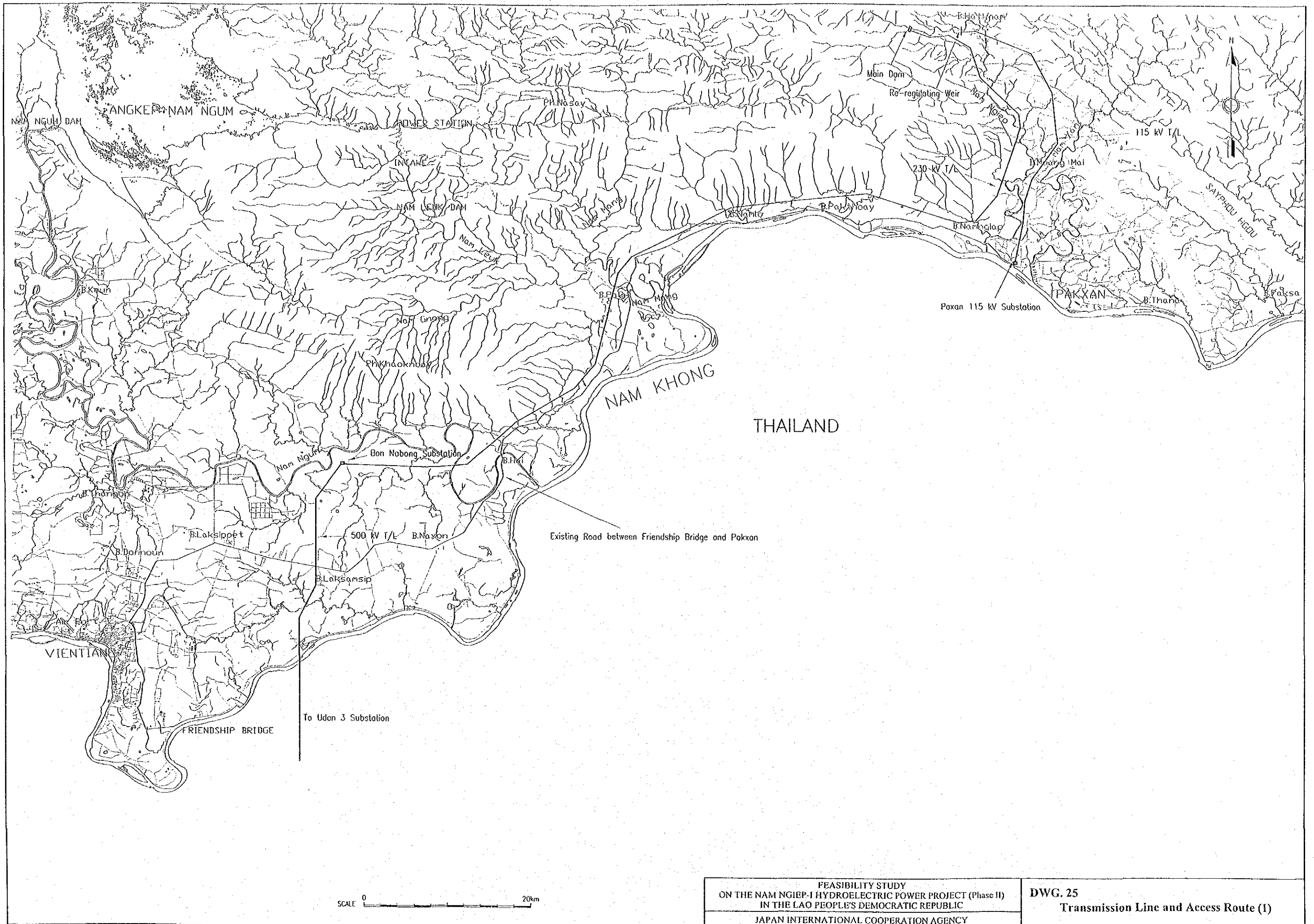
DWG. 23
Re-Regulating Facilities, Plan and Elevation



SCALE 0 20m

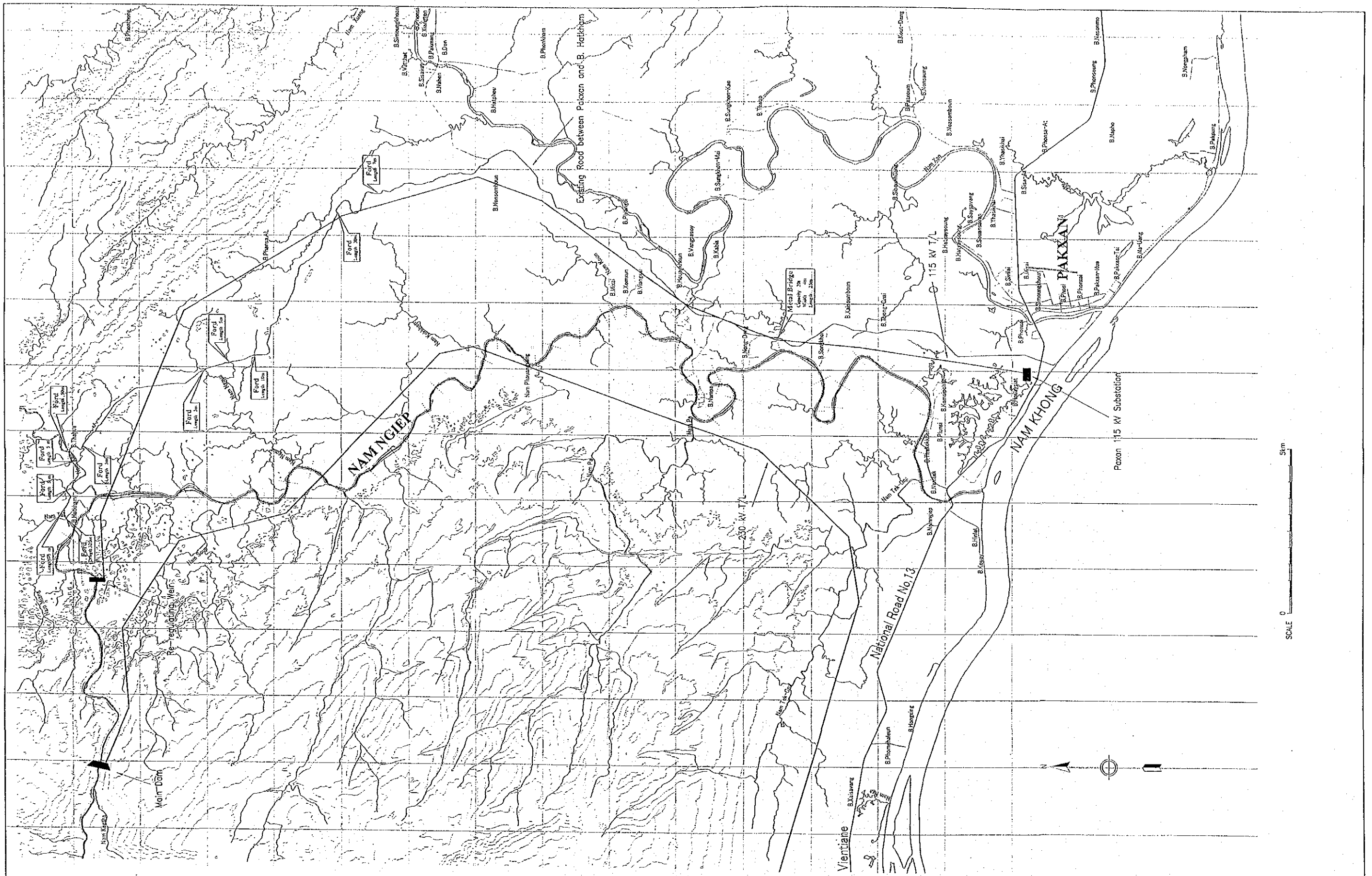
FEASIBILITY STUDY
ON THE NAM NGIEP-I HYDROELECTRIC POWER PROJECT (Phase II)
IN THE LAO PEOPLE'S DEMOCRATIC REPUBLIC
JAPAN INTERNATIONAL COOPERATION AGENCY

DWG. 24
Re-Regulating Facilities, Sections



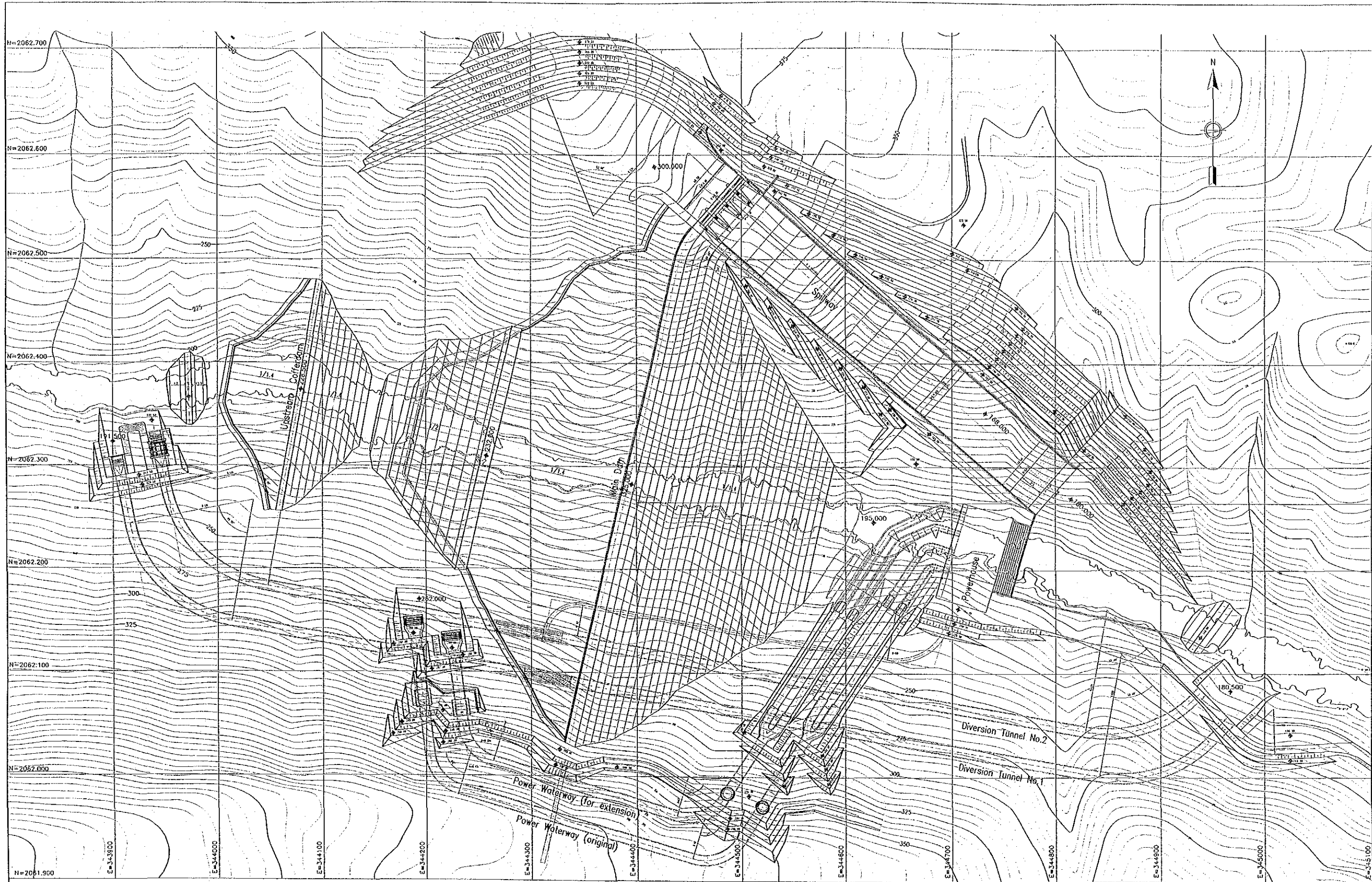
FEASIBILITY STUDY
 ON THE NAM NGIEP-I HYDROELECTRIC POWER PROJECT (Phase II)
 IN THE LAO PEOPLE'S DEMOCRATIC REPUBLIC
 JAPAN INTERNATIONAL COOPERATION AGENCY

DWG. 25
 Transmission Line and Access Route (I)



FEASIBILITY STUDY
 ON THE NAM NGIEP-I HYDROELECTRIC POWER PROJECT (Phase II)
 IN THE LAO PEOPLE'S DEMOCRATIC REPUBLIC
 JAPAN INTERNATIONAL COOPERATION AGENCY

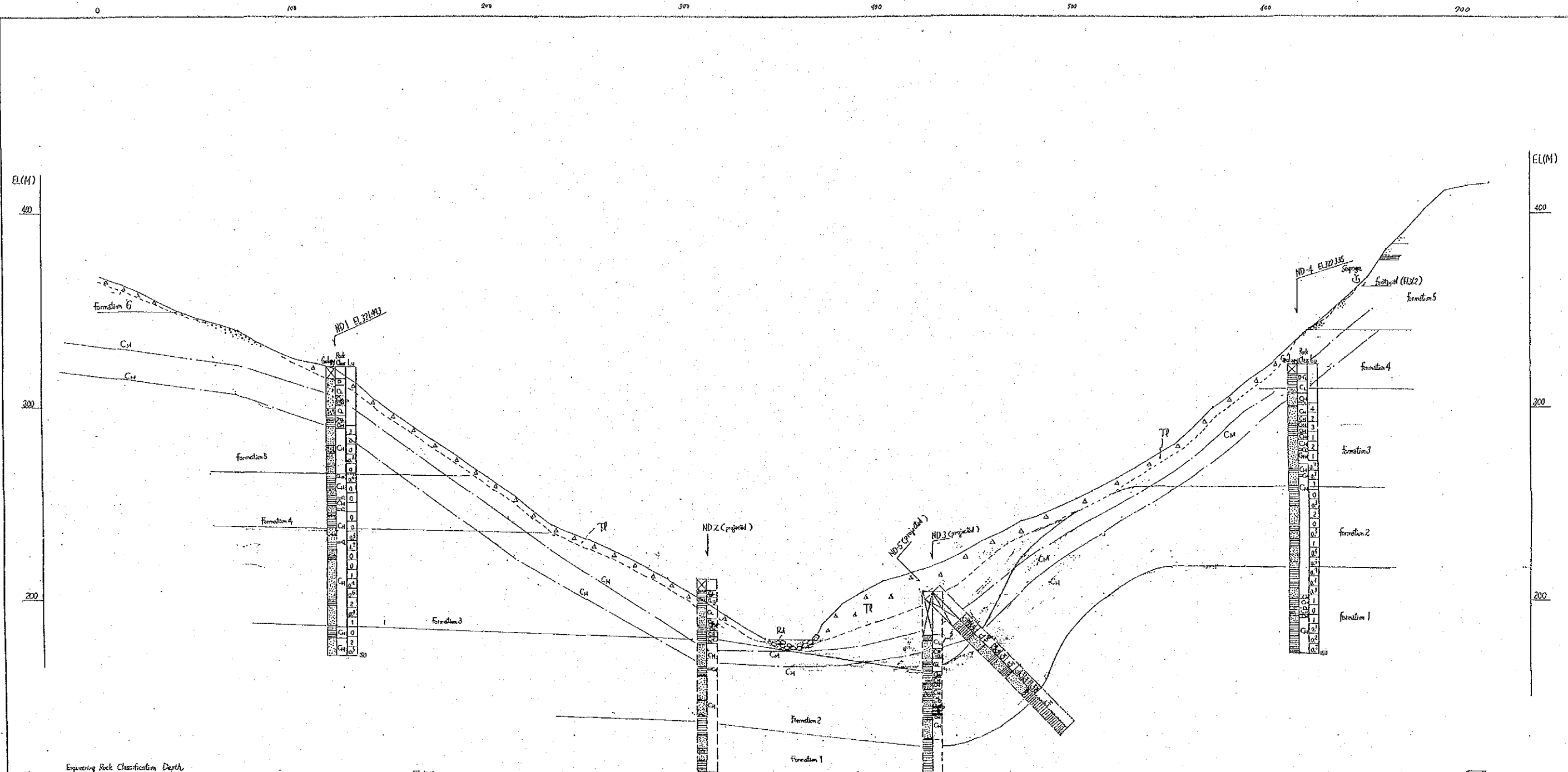
DWG. 26
 Transmission Line and Access Route (2)



SCALE 0 100m

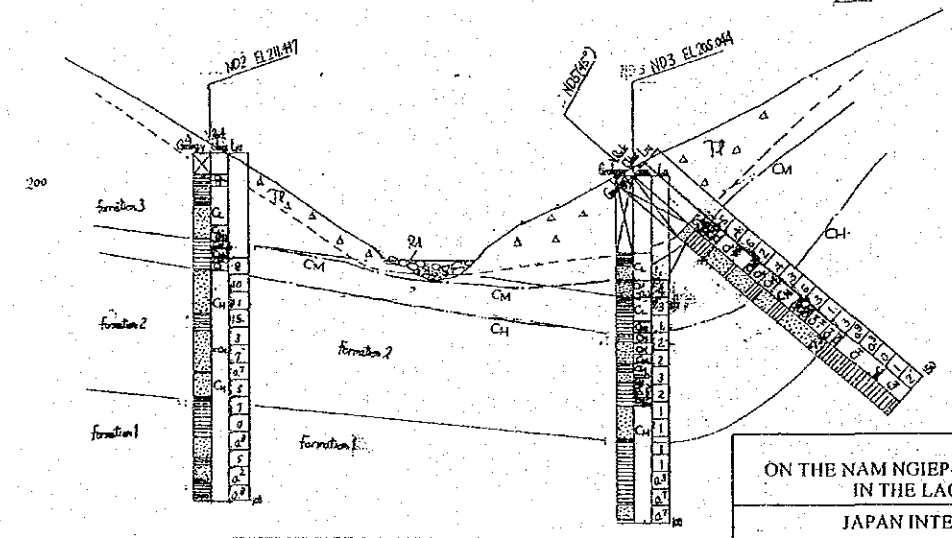
FEASIBILITY STUDY
 ON THE NAM NGIEP-1 HYDROELECTRIC POWER PROJECT (Phase II)
 IN THE LAO PEOPLE'S DEMOCRATIC REPUBLIC
 JAPAN INTERNATIONAL COOPERATION AGENCY

DWG. 27
 Main Dam, Alternative General Plan
 for Future Extension



Engineering Rock Classification Depth

Borehole	GH	Depth (GT-M)			
		Rock Surface	C ₁	C ₂	C ₃
ND-1	321.413	6.0	9.5	15	22 ²
ND-2	211.977	5.5	12.4	25.4	33 ²
ND-3	205.044	22.5	22.5	30.0	45.0
ND-4	322.335	5.4	8.7	15.0	22.0
ND-5 (ND-3)		20.4	20.4	23.4	32.7



Loose Deposits

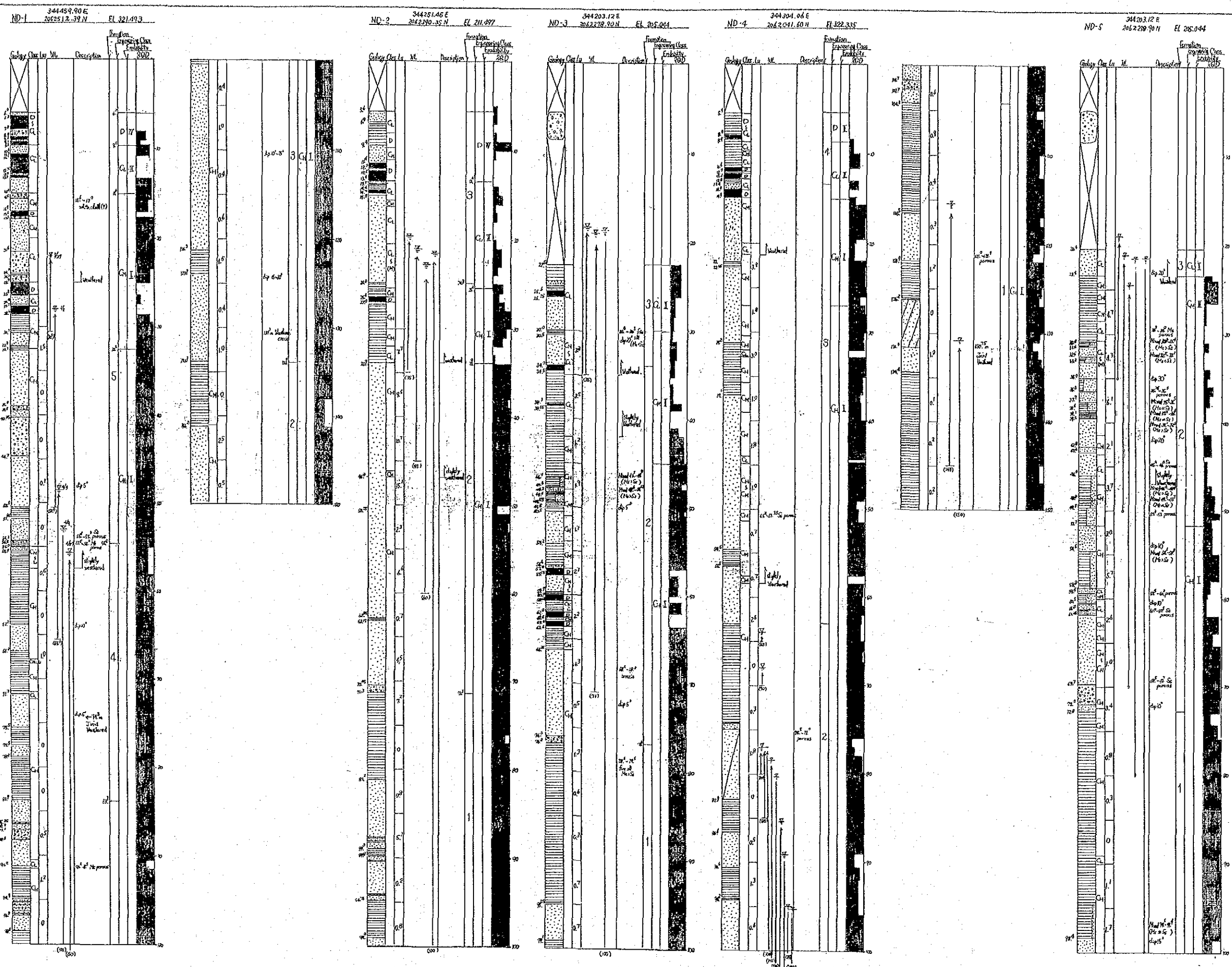
○ ○ ○ ○	RA	River Deposits
△ △ △ △	TR	Talus Deposits
⊠		Loose Deposits
⊞		Carbonate
⊞		Carbonate Sandstone
⊞		Sandstone
⊞		Mudstone

Rocks and Formations

Formation	Thickness	Rock's main lithology	Thickness relationship (1, 2, 3)
S ₁ /M ₁		Sandstone and Mudstone	M ₁ > S ₁
Formation 5	80m	Carbonate, Carbonate Sandstone and Sandstone	C ₁ , S ₁ > M ₁
Formation 4	30m	Mudstone mainly and Sandstone partly	M ₁ > S ₁
Formation 3	50m	Mudstone and Sandstone	M ₁ < S ₁
Formation 2	40m	Sandstone and Mudstone	S ₁ > M ₁
Formation 1	30m+	Mudstone mainly and Sandstone partly	M ₁ > S ₁

Rem 1) Mudstone and Sandstone are tuffaceous part by part (V marked).
 Rem 2) When folding, Sandstone and Mudstone are mixed lithology (M₁ marked).

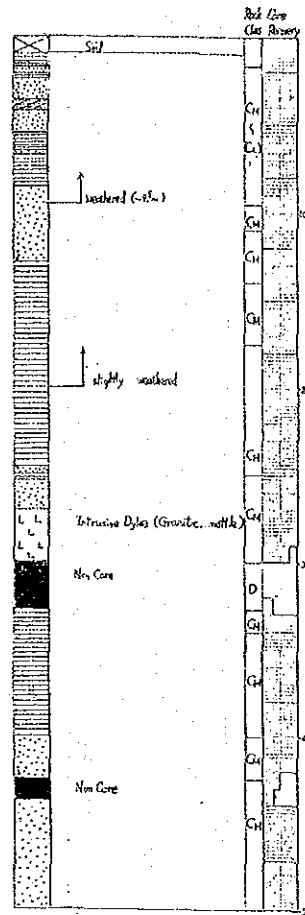
FEASIBILITY STUDY
 ON THE NAM NGIEP-I HYDROELECTRIC POWER PROJECT (Phase II)
 IN THE LAO PEOPLE'S DEMOCRATIC REPUBLIC
 JAPAN INTERNATIONAL COOPERATION AGENCY
 DWG. 28
 Dam Site, Geological Profile



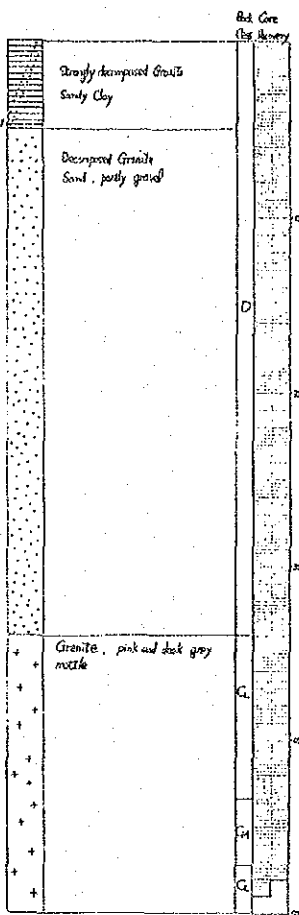
DWG. 29
Drilling Logs (1/2 : ND-1, ND-2, ND-3, ND-4, ND-5)

FEASIBILITY STUDY
 ON THE NAM NGIEP-1 HYDROELECTRIC POWER PROJECT (Phase II)
 IN THE LAO PEOPLE'S DEMOCRATIC REPUBLIC
 JAPAN INTERNATIONAL COOPERATION AGENCY

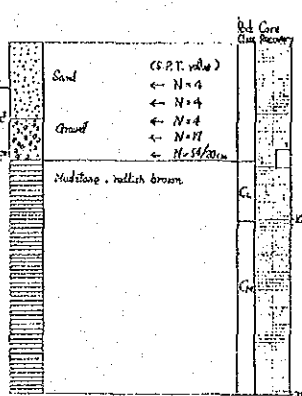
NQ-1 341200E
2041910 N EL 325



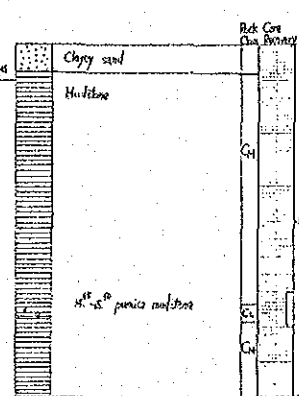
NQ-2 321843E
2071591 N EL 400



NR-1 349240.69E
2062341.11 N EL 12442



NR-2 348318.41E
2062444.91 N EL 37365



FEASIBILITY STUDY
ON THE NAM NGIEP-1 HYDROELECTRIC POWER PROJECT (Phase II)
IN THE LAO PEOPLE'S DEMOCRATIC REPUBLIC
JAPAN INTERNATIONAL COOPERATION AGENCY

DWG. 30
Drilling Logs (2/2 : NQ-1, NQ-2, NR-1, NR-2)

JICA