


THE STUDY ON FISHERIES INFRASTRUCTURE SUPPORT AND
COASTAL COMMUNITIES DEVELOPMENT PLAN IN EASTERN INDONESIA

FINAL REPORT FEASIBILITY STUDY

**THE STUDY ON FISHERIES INFRASTRUCTURE SUPPORT
AND
COASTAL COMMUNITIES DEVELOPMENT PLAN
IN
EASTERN INDONESIA
FINAL REPORT
FEASIBILITY STUDY**

JICA LIBRARY

J1170359(2)

OCTOBER 2002

OCTOBER 2002

108
89
AFF

SYSTEM SCIENCE CONSULTANTS INC.
OVERSEAS AGRO-FISHERIES CONSULTANTS CO.,LTD

AFF
JR
02-67

LIBRARY

JAPAN INTERNATIONAL COOPERATION AGENCY(JICA)
MINISTRY OF MARINE AFFAIRS AND FISHERIES(MOMAF)
REPUBLIC OF INDONESIA

**THE STUDY ON FISHERIES INFRASTRUCTURE SUPPORT
AND
COASTAL COMMUNITIES DEVELOPMENT PLAN
IN
EASTERN INDONESIA**

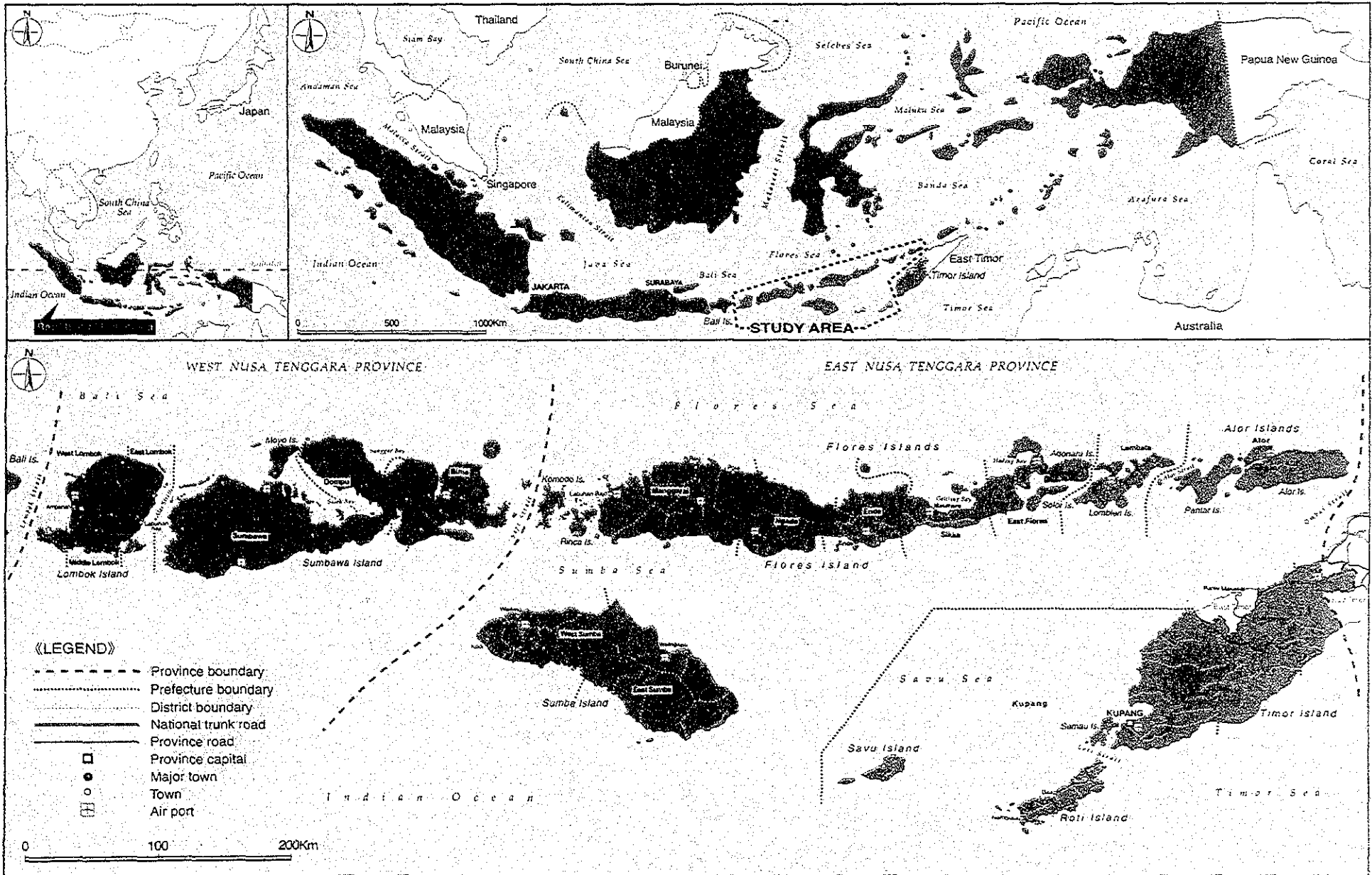
**FINAL REPORT
FEASIBILITY STUDY**

OCTOBER 2002

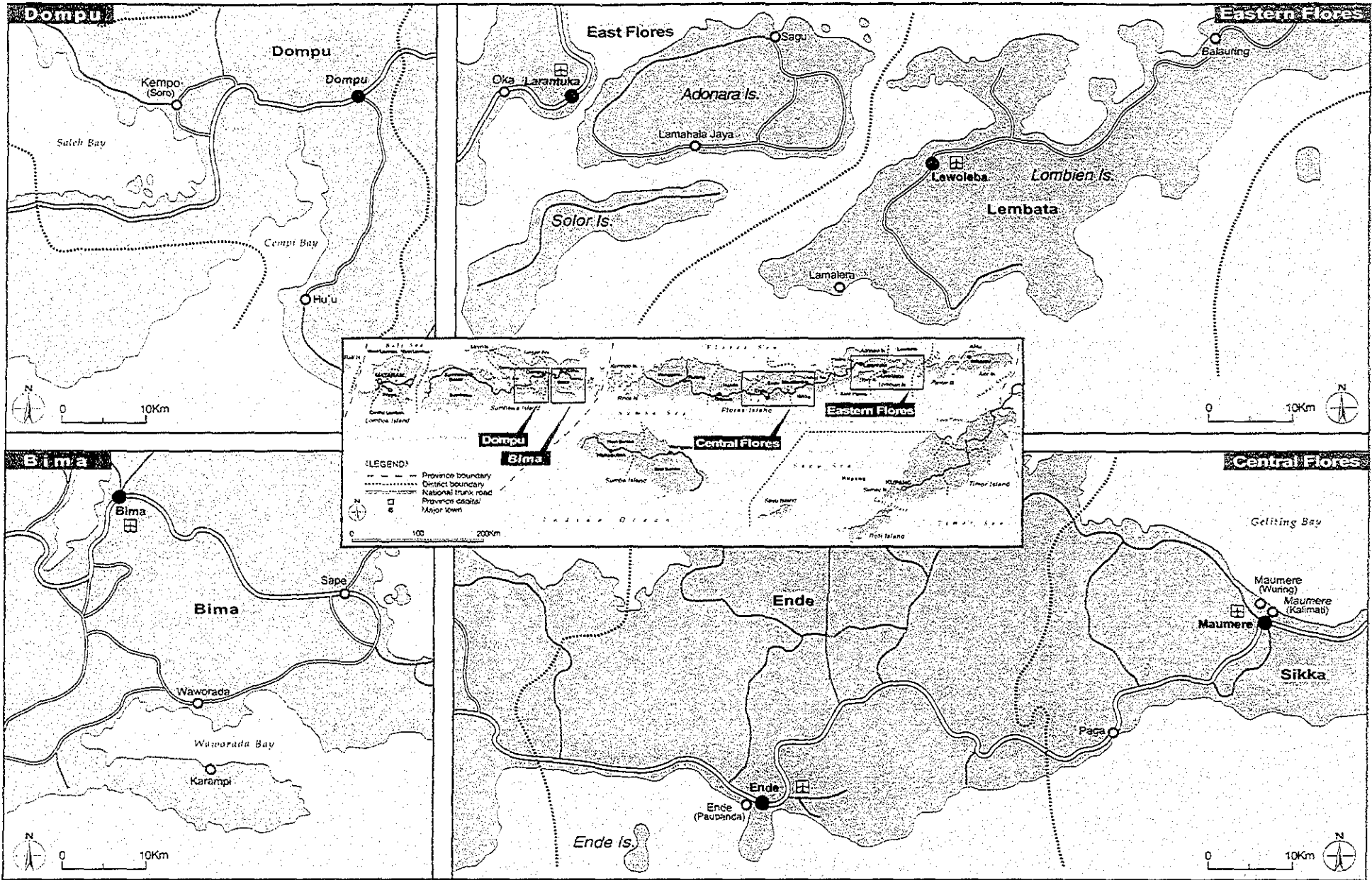
**SYSTEM SCIENCE CONSULTANTS INC.
OVERSEAS AGRO-FISHERIES CONSULTANTS CO.,LTD**



1170359(2)

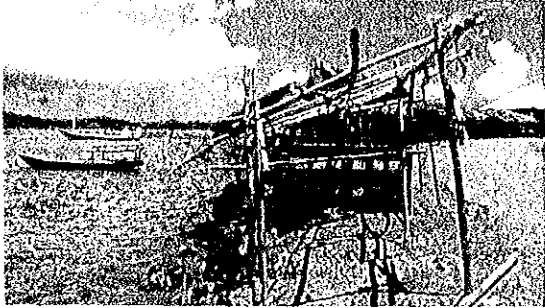


LOCATION MAP OF THE STUDY AREA



LOCATION MAP OF THE PRIORITY ZONES

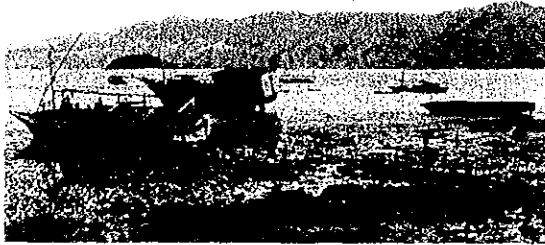
Existing Conditions of the Model Sites in NTB Province



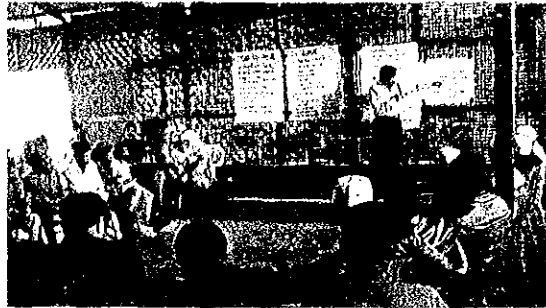
Rompo Project Site --Beach borders the arterial road to Bima Town (the district capital)
(Rompo Site, Bima District)



The Rompo Project Site seen from the beach during low tide
(Rompo Site, Bima District)



Relatively large fishing boats are moored in front of the harbour. The boats are unable to leave during the low tide. (Rompo Site, Bima District)



Discussions with fishermen during a workshop held by the study team members
(Rompo Site, Bima District)



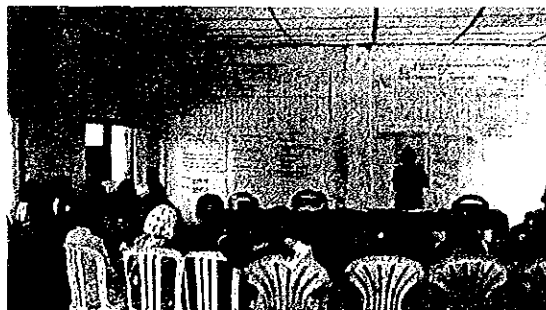
Soro fishing village on Saleh Harbour
(Soro Site, Dompu District)



Existing jetty (Soro site) to be extended & auction hall to be constructed at the extension end. Water depth for 24-hour moorage of boats to be secured.



Only land facilities will be constructed at Hu'u. Construction site is a gravel beach ($\phi 5\sim 10\text{cm}$).
(Hu'u Site, Dompu District)

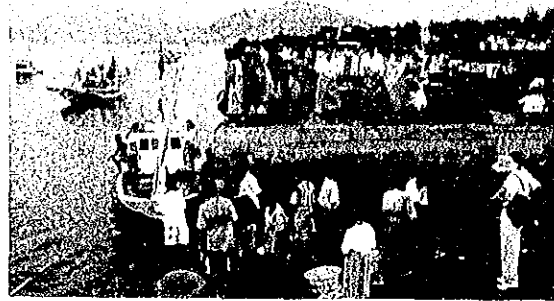


Discussions with women during a workshop held by the study team members
(Hu'u Site, Bima District)

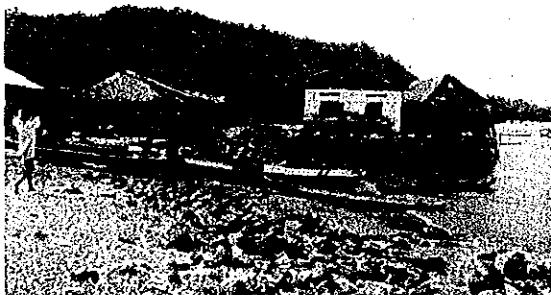
Existing Conditions of the Model Sites in NTT Province



The planned construction site at Oka is a 15-minute drive from the district capital, Larantuka (Oka Site, East Flores District)



Departure of fishing boats on fishing operation at the Larantuka fishing village (Larantuka, East Flores District)



A fresh fish shipment system will be created at this fishing village, Sagu (Adonara Is.) located 2 hours by ferry from Larantuka. (Sagu, East Flores Dist.)



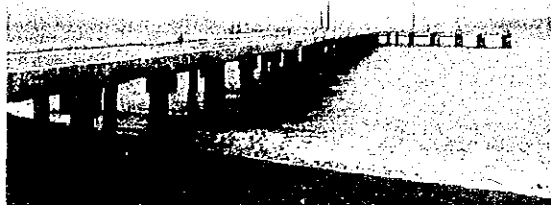
JICA study team explains the content of the project for the model sites. (Larantuka, East Flores District)



The means of transportation to Lamalera fishing villages located on the remote island are limited. (Lamalera, Lembata District)



In addition to small-scale coastal fisheries at Balauring, large sport fishing also exists. (Balauring, Lembata District)



The existing public landing facilities (PPI) are completely unused due to the lack of service functions. (Paupanda, Ende District)



Kalimati is located in Maumere, the largest town on Flores Island (Kalimati, Sikka District)

FINAL REPORT

Feasibility Study

Table of Contents

PART V	FEASIBILITY STUDY ON PRIORITY ZONES	
Part V-1	Bima Priority Zone	
Chapter 1	Background of the Bima Priority Zone.....	V-1
1.1	Situation of Priority Zone.....	V-1
1.1.1	Natural Conditions	V-1
1.1.2	Social Infrastructure	V-2
1.1.3	Fishery Related Facilities	V-4
1.2	Fisheries Conditions.....	V-4
1.2.1	Overview of Fishing Village	V-4
1.2.2	Fishing Activities	V-5
1.2.3	Fish Marketing, Processing and Shipping	V-6
1.2.4	Mariculture	V-8
1.3	Fishermen Organization, Fisheries Credit, Fisheries Extension, Education/Training and Community Living Environment	V-9
1.3.1	Fishermen Organization and Fisheries Credit	V-9
1.3.2	Fisheries Extension, Education/Training.....	V-10
1.3.3	Community Living Environment	V-10
1.4	Development Issues	V-11
Chapter 2	Contents of the Plan.....	V-12
2.1	Objectives.....	V-12
2.2	Basic Development Concept	V-12
2.3	Sector Plan	V-13
2.3.1	Plan for Coastal Resources Management	V-13
2.3.2	Plan for Fish Landing, Handling, Marketing and Processing.....	V-21
2.3.3	Plan for Fisheries Activities Support.....	V-32
2.3.4	Plan for Fishing Village Environment.....	V-35
2.3.5	Plan for Fishermen Organization and Fisheries Extension	V-38
2.3.6	Plan for Education and Training.....	V-44
2.3.7	Summary of Projects in Sector Plan.....	V-46
2.4	Facilities and Equipment Plan.....	V-49
2.4.1	Design Policies	V-49
2.4.2	Layout Plan	V-51
2.4.3	Facilities Plan	V-56
2.4.4	Equipment Plan	V-63
2.5	Operation and Maintenance Plan	V-64
2.5.1	Organization for Operation and Management.....	V-64
2.5.2	Operation and Management Plan	V-69
2.5.3	Maintenance Plan	V-83
2.6	Environmental Impact Evaluation and Mitigation	V-85
2.6.1	Impact during Construction Stage for Rompo (Waworada) Site	V-85
2.6.2	Bima Fish Market Site.....	V-92

Chapter 3	Project Costs.....	V-94
3.1	Condition for Cost Estimation.....	V-94
3.2	Breakdown of Project Costs.....	V-94
Chapter 4	Project Evaluation.....	V-95
4.1	Economic and Financial Evaluation.....	V-95
	4.1.1 Economic Evaluation	V-95
	4.1.2 Financial Evaluation.....	V-99
4.2	Environmental Evaluation.....	V-102
4.3	Social Evaluation	V-103
4.4	Overall Evaluation	V-105
Part V-2	Dompu Priority Zone	
Chapter 1	Background of the Dompu Priority Zone	V-107
1.1	Situation of Priority Zone.....	V-107
	1.1.1 Natural Conditions	V-107
	1.1.2 Social Infrastructure	V-109
	1.1.3 Fishery Related Facilities	V-110
1.2	Fisheries Conditions.....	V-110
	1.2.1 Overview of Fishing Village	V-110
	1.2.2 Fishing Activities	V-111
	1.2.3 Fish Marketing, Processing and Shipping	V-112
	1.2.4 Mariculture.....	V-115
1.3	Fishermen Organization, Fisheries Credit, Fisheries Extension, Education/Training and Community Living Environment	V-117
	1.3.1 Fishermen Organization and Fisheries Credit	V-117
	1.3.2 Fisheries Extension, Education/Training.....	V-118
	1.3.3 Community Living Environment	V-118
1.4	Development Issues	V-120
Chapter 2	Contents of the Plan	V-121
2.1	Objectives.....	V-121
2.2	Basic Development Concept	V-121
2.3	Sector Plan	V-122
	2.3.1 Plan for Coastal Resources Management	V-122
	2.3.2 Plan for Fish Landing, Handling, Marketing and Processing.....	V-128
	2.3.3 Plan for Fisheries Activities Support.....	V-139
	2.3.4 Plan for Mariculture	V-143
	2.3.5 Plan for Fishing Village Environment.....	V-144
	2.3.6 Plan for Fishermen Organization and Fisheries Extension	V-146
	2.3.7 Plan for Education and Training.....	V-147
	2.3.8 Summary of Projects in Sector Plan	V-147
2.4	Facilities and Equipment Plan.....	V-150
	2.4.1 Design Policies	V-150
	2.4.2 Layout Plan	V-153
	2.4.3 Facilities Plan	V-158
	2.4.4 Equipment Plan	V-169
2.5	Operation and Maintenance Plan	V-171
	2.5.1 Organization for Operation and Management	V-171
	2.5.2 Operation and Management Plan	V-176

	2.5.3	Maintenance Plan	V-189
2.6		Environmental Impact Evaluation and Mitigation	V-191
	2.6.1	Impact during Constitution Stage for Soro Site	V-192
	2.6.2	Impact during Constitution Stage Hu'u Site	V-193
	2.6.3	Impact during Operation/Maintenance Stage for Soro and Hu'u Sites	V195
Chapter 3		Project Costs.....	V-200
3.1		Condition for Cost Estimation.....	V-200
3.2		Breakdown of Project Costs.....	V-200
Chapter 4		Project Evaluation.....	V-201
4.1		Economic and Financial Evaluation.....	V-201
	4.1.1	Economic Evaluation	V-201
	4.1.2	Financial Evaluation.....	V-205
4.2		Environmental Evaluation.....	V-207
4.3		Social Evaluation	V-208
4.4		Overall Evaluation	V-210
Part V-3		Eastern Flores Island Priority Zone	
Chapter 1		Background of the Eastern Flores Priority Zone.....	V-211
1.1		Situation of Priority Zone.....	V-211
	1.1.1	Natural Conditions	V-211
	1.1.2	Social Infrastructure	V-214
	1.1.3	Fishery Related Facilities	V-216
1.2		Fisheries Conditions.....	V-216
	1.2.1	Overview of Fishing Village	V-216
	1.2.2	Fishing Activities	V-217
	1.2.3	Fish Marketing, Processing, and Shipping	V-218
	1.2.4	Mariculture	V-220
1.3		Fishermen Organization, Fisheries Credit, Fisheries Extension, Education/Training and Community Living Environment	V-223
	1.3.1	Fishermen Organization and Fisheries Credit	V-223
	1.3.2	Fisheries Extension, Education/Training.....	V-225
	1.3.3	Community Living Environment	V-225
1.4		Development Issues	V-227
Chapter 2		Contents of the Plan	V-228
2.1		Objectives.....	V-228
2.2		Basic Development Concept.....	V-228
2.3		Sector Plan	V-229
	2.3.1	Plan for Coastal Resources Management	V-229
	2.3.2	Plan for Fish Landing, Handling, Marketing and Processing.....	V-237
	2.3.3	Plan for Fisheries Activities Support.....	V-254
	2.3.4	Plan for Mariculture	V-258
	2.3.5	Plan for Fishing Village Environment.....	V-260
	2.3.6	Plan for Fishermen Organization and Fisheries Extension	V-262
	2.3.7	Plan for Education and Training.....	V-265
	2.3.8	Summary of Projects in Sector Plans	V-265
2.4		Facilities and Equipment Plan.....	V-268
	2.4.1	Design Policies	V-268
	2.4.2	Layout Plan	V-270

	2.4.3	Facilities Plan	V-276
	2.4.4	Equipment Plan	V-285
2.5		Operation and Maintenance Plan	V-288
	2.5.1	Organization for Operation and Management	V-288
	2.5.2	Operation and Management Plan	V-294
	2.5.3	Maintenance Plan	V-309
2.6		Environmental Impact Evaluation and Mitigation	V-311
	2.6.1	Impact during Construction Stage for Oka Site	V-311
	2.6.2	Impact during Construction Stage for Lewoleba Site	V-313
	2.6.3	Impact during Operation/Maintenance Stage for Eastern Flores Priority Zone.....	V-315
Chapter 3		Project Costs.....	V-320
3.1		Condition for Cost Estimation.....	V-320
3.2		Breakdown of Project Costs	V-320
Chapter 4		Project Evaluation.....	V-321
4.1		Economic and Financial Evaluation.....	V-321
	4.1.1	Economic Evaluation	V-321
	4.1.2	Financial Evaluation.....	V-328
4.2		Environmental Evaluation.....	V-331
4.3		Social Evaluation	V-332
4.4		Overall Evaluation	V-334
Part V-4		Central Flores Island Priority Zone	
Chapter 1		Background of the Central Flores Priority Zone	V-337
1.1		<i>Situation of Priority Zone.....</i>	V-337
	1.1.1	Natural Conditions	V-337
	1.1.2	Social Infrastructure	V-340
	1.1.3	Fishery Related Facilities	V-341
1.2		Fisheries Conditions	V-343
	1.2.1	Overview of Fishing Village	V-343
	1.2.2	Fisheries Activities	V-344
	1.2.3	Fish Marketing, Processing, and Shipping	V-346
	1.2.4	Mariculture	V-348
1.3		Fishermen Organization, Fisheries Credit, Fisheries Extension, Education/Training and Community Living Environment	V-350
	1.3.1	Fishermen Organization and Fisheries Credit	V-350
	1.3.2	Fishery Extension, Fishermen Education and Training.....	V-351
	1.3.3	Community Living Environment	V-351
1.4		Development Issues	V-354
Chapter 2		Contents of the Plan.....	V-356
2.1		Objectives.....	V-356
2.2		Basic Development Concept	V-356
2.3		Sector Plan	V-357
	2.3.1	Plan for Coastal Resources Management	V-357
	2.3.2	Plan for Fish Landing, Handling, Marketing and Processing.....	V-364
	2.3.3	Plan for Fisheries Activities Support.....	V-379
	2.3.4	Plan for Fishing Village Environment.....	V-383
	2.3.5	Plan for Fishermen Organization and Fisheries Extension	V-384
	2.3.6	Plan for Education and Training.....	V-386
	2.3.7	Summary of Projects in Sector Plans	V-386

2.4	Facilities and Equipment Plan.....	V-389
2.4.1	Design Policies	V-389
2.4.2	Layout Plan	V-393
2.4.3	Facilities Plan	V-402
2.4.4	Equipment Plan	V-420
2.5	Operation and Maintenance Plan	V-422
2.5.1	Organization for Operation and Management	V-422
2.5.2	Operation and Management Plan	V-429
2.5.3	Maintenance Plan	V-442
2.6	Environmental Impact Evaluation and Mitigation	V-444
2.6.1	Impact during Construction Stage for Kalimati Site	V-444
2.6.2	Impact during Construction Stage for Wuring, Paga and Paupanda Site	V-446
2.6.3	Impact during Operation/Maintenance Stage for Maumere, Wuring, Paga, and Paupanda Site.....	V-448
Chapter 3	Project Costs.....	V-453
3.1	Condition for Cost Estimation.....	V-453
3.2	Breakdown of Project Costs.....	V-453
Chapter 4	Project Evaluation.....	V-454
4.1	Economic and Financial Evaluation.....	V-454
4.1.1	Economic Evaluation	V-454
4.1.2	Financial Evaluation.....	V-460
4.2	Environmental Evaluation.....	V-464
4.3	Social Evaluation	V-465
4.4	Overall Evaluation	V-467

PART VI PROJECT IMPLEMENTATION PLAN

Chapter 1	Executing Agency	VI-1
1.1	Programme Coordination Agency.....	VI-1
1.2	District Project Coordination Committee (DPCC).....	VI-2
1.3	Programme Implementation Committee	VI-2
1.4	Programme Management Office	VI-2
1.5	Fishermen Organizations That Will Manage the Project (Model Site)	VI-3
Chapter 2	Implementation Schedule	VI-4
2.1	Implementation Schedule of the Priority Zones.....	VI-4
2.2	Priority Programmes in the Priority Zones	VI-4
2.3	Priority Projects in Each Programme	VI-5
2.4	Summary of the Project Design Based on the Development Zones.....	VI-7
Chapter 3	Designing/ Construction Plan.....	VI-8
3.1	Bima Priority Zone.....	VI-8
3.1.1	Design Plan	VI-8
3.1.2	Procurement Plan	VI-8
3.2	Dompu Priority Zone	VI-9
3.1.1	Design Plan	VI-9
3.1.2	Procurement Plan	VI-9
3.3	Eastern Flores Priority Zone	VI-10
3.1.1	Design Plan	VI-10
3.1.2	Procurement Plan	VI-11
3.4	Central Flores Priority Zone.....	VI-11

	3.1.1	Design Plan	VI-11
	3.1.2	Procurement Plan	VI-12
Chapter 4		Capital Procurement Plan.....	VI-14
	4.1	Initial Input Capital	VI-14
	4.2	Operating Capital	VI-14
Chapter 5		Technical Assistance	VI-15
PART VII		RECOMMENDATION	VII-1

APPENDICES

Appendix - 1:	Baseline Data on Priority Zones	A1-1
Appendix - 2:	Experimental Fishing Operations Inside and Outside of Waworada Bay	A2-1
Appendix - 3:	Experiments on Fresh Fish Preservation and Processing	A3-1
Appendix - 4:	Determination of Scale	A4-1
Appendix - 5:	Cost and Benefit Calculation	A5-1
Appendix - 6:	Cost Estimates	A6-1
Appendix - 7:	Natural Conditions in the Priority Zones	A7-1
Appendix - 8:	Economic and Financial Evaluation	A8-1

Acronyms and Abbreviations

ADB	Asian Development Bank
AMDAL	Analysis of Environmental Impact Process
Bapedal	Environmental Impact Management Agency
Bapedalda	District Environmental Impact Management Agency
BAPPEDA	Regional Development Planning Agency
BAPPENAS	National Development Planning Agency
BIPP	Centre for Agriculture Information and Extension
BPD	District Development Bank
BPLLP	Agency for Agricultural Extension Services
BPSDM	Agency for Human Resource Development in Agriculture
BRI	Bank Rakyat Indonesia
Bupati	District Administrator
COREMAP	Coral Reef Rehabilitation and Management Project
CPUE	Catch Per Unit Effort
DGA	Directorate General of Aquaculture
DGCF	Directorate General of Capture Fisheries
DIKLAT	Centre for Education and Training
EIA	Environmental Impact Assessment
FAD	Fish Aggregating Device
GPS	Global Positioning System
GRDP	Gross Regional Domestic Product
GTZ	German Technical Cooperation
IEE	Initial Environmental Examination
IFAD	International Fund for Agricultural Development
IPPTP	Centre for Agriculture Technology Research and Study
JBIC	Japan Bank for International Cooperation
JICA	Japan International Cooperation Agency
JOCV	Japan Overseas Cooperation Volunteers
Kabupaten	District
Kecamatan	Sub-District
Kelompok	Group
KUD	Village Units Cooperative
KUD Mina	Fisheries related cooperative
MMAF	Ministry of Marine Affairs and Fisheries
MOA	Ministry of Agriculture
MSY	Maximum Sustainable Yield
NGO	Non Government Organization
NTB	West Nusa Tenggara Province
NTT	East Nusa Tenggara Province
PKK	Family Welfare Development
PPI	Fish Landing Place
PPL	Extension worker
PPS	Extension subject matter specialist
PROPEDA	District Development Program
PROPENA	National Development Program
PROTEKAN	Fisheries Development Program
TAC	Total Allowable Catch
TNC	The Nature Conservancy
TOR	Terms of Reference
TPI	Fish Auction Place
UNDP	United Nations Development Programme
VHF	Very High Frequency
WB	World Bank

Exchange Rate

1US\$=Rp 8,829

100 yen = Rp 7,089

Source: Bank of Indonesia May 30, 2002

V. FEASIBILITY STUDY OF PRIORITY ZONES

Introduction

The following four priority zones in Sumbawa and Flores islands were selected in the Master Plan study.

Sumbawa Island (NTB)

First Priority Zone: Rompo site, Waworada Village, Bima District (expand and improve the existing Bima market)

Second Priority Zone: Soro site, Soro Village, Dompu District; and Hu'u site, Hu'u Village

Flores Island (NTT)

First Priority Zone: Oka site, Larantuka Sub-district, East Flores District (includes the Lamahala, Sagu, Lewoleba, Balauring, and Lamalera sites in the remote island districts)

Second Priority Zone: Kalimati/Wuring site, Maumere Town, Sikka District; and Paga site, Paga Sub-district; Paupanda site, Ende District

The development issues of these priority zones include the development issues of the study area as defined in the Master Plan Report.

- (1) Poverty of fishermen households
- (2) Future fish supply shortages in the region
- (3) Damage and loss of fishery resources
- (4) Lagging measures to organize fishermen
- (5) *Inadequate fishing village infrastructure*
- (6) Inconvenient living environment of fishing villages

This is a feasibility study related to the small-scale fisheries development plan for each zone that was formulated to resolve these development issues.