

## **Chapter 2**

### **Data of Electro-magnetic Survey and Electrical Soundings**

Table G2. 1 Quantity of Geophysical Prospecting Work

| Province | Commune    | Electrical sounding<br>Line | Electromagnetic sounding<br>Point |
|----------|------------|-----------------------------|-----------------------------------|
|          | Bo Y       | -                           | 47                                |
|          | Dak Su     | -                           | 50                                |
| Kon Tum  | Dak Ui     | 4                           | -                                 |
|          | Dak Hring  | 4                           | -                                 |
|          | Sa Nghia   | -                           | 51                                |
|          | Chu Hreng  | 4                           | -                                 |
|          | Kong Tang  | 4                           | -                                 |
|          | Nhon Hoa   | 3                           | 7                                 |
|          | Chu Ty     | -                           | 51                                |
| Gia Lai  | Thang Hung | 4                           | -                                 |
|          | Nghia Hoa  | -                           | 49                                |
|          | Ia Rsuom   | 4                           | -                                 |
|          | Kong Yang  | 4                           | -                                 |
|          | Krong Nang | 4                           | -                                 |
|          | Ea Drang   | 4                           | -                                 |
|          | Krong Buk  | -                           | 55                                |
| Dak Lak  | Ea Drong   | -                           | 50                                |
|          | Ea Wer     | -                           | 52                                |
|          | Kien Duc   | 2                           | 4                                 |
|          | Krong Kmar | 2                           | 53                                |
| Total    |            | 43                          | 469                               |

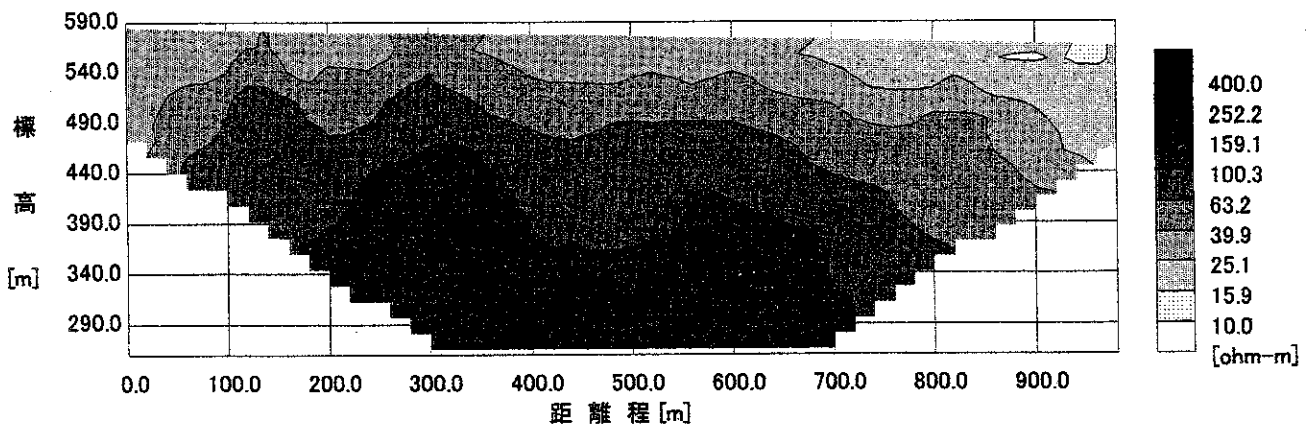
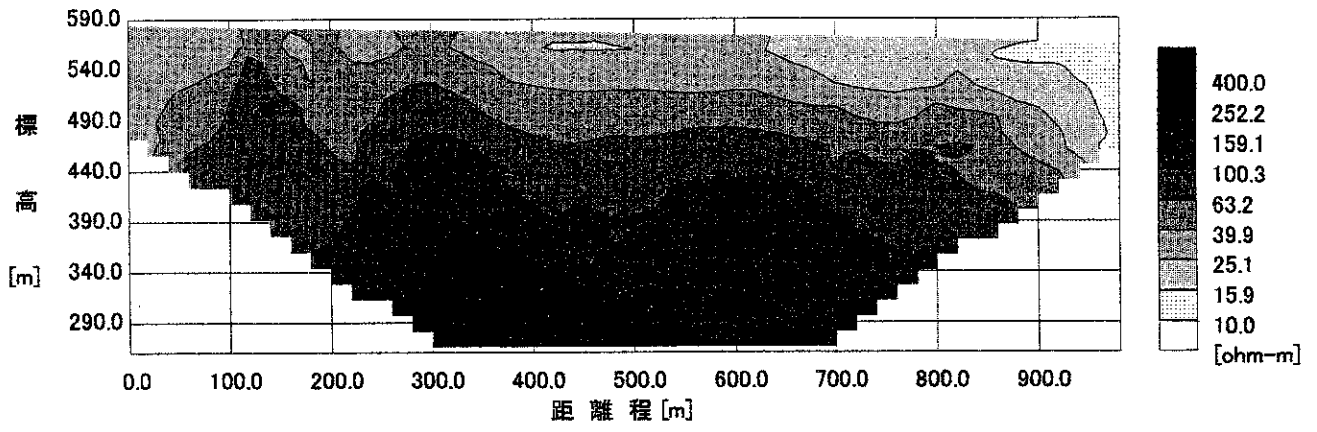


Figure G2. 1 Apparent resistivity sections

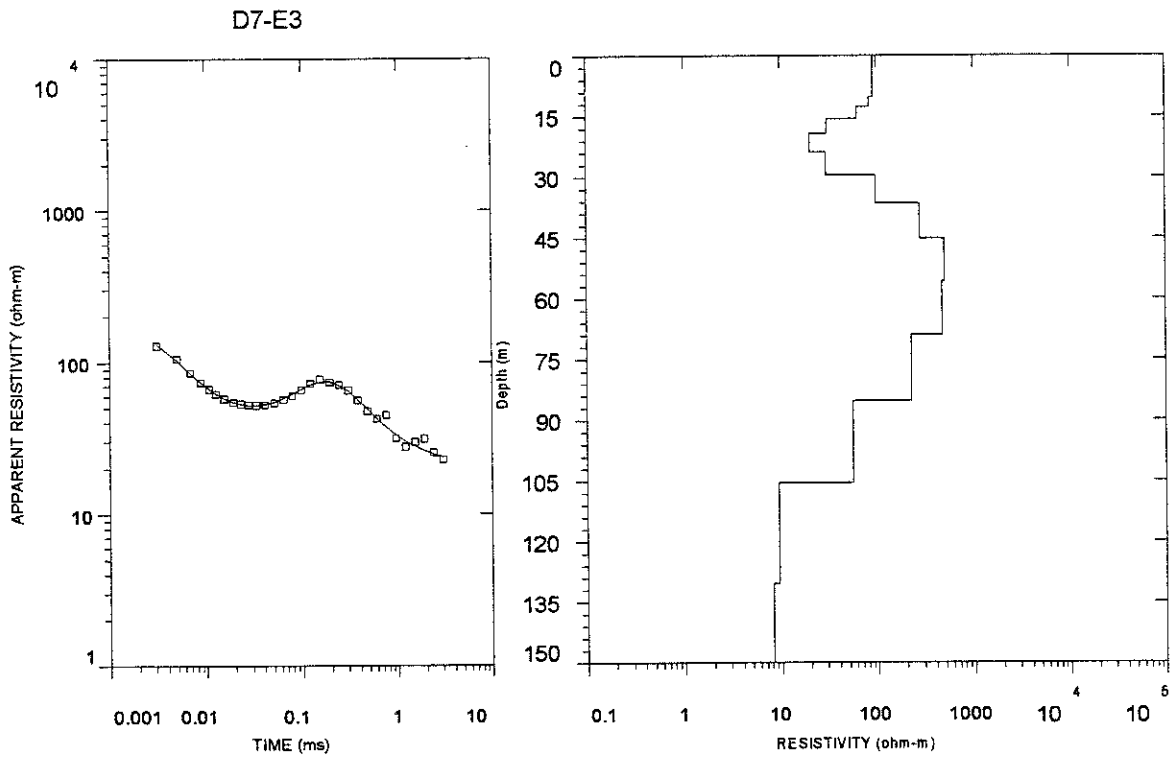


Figure G2. 2 Result of one-dimensional inversion

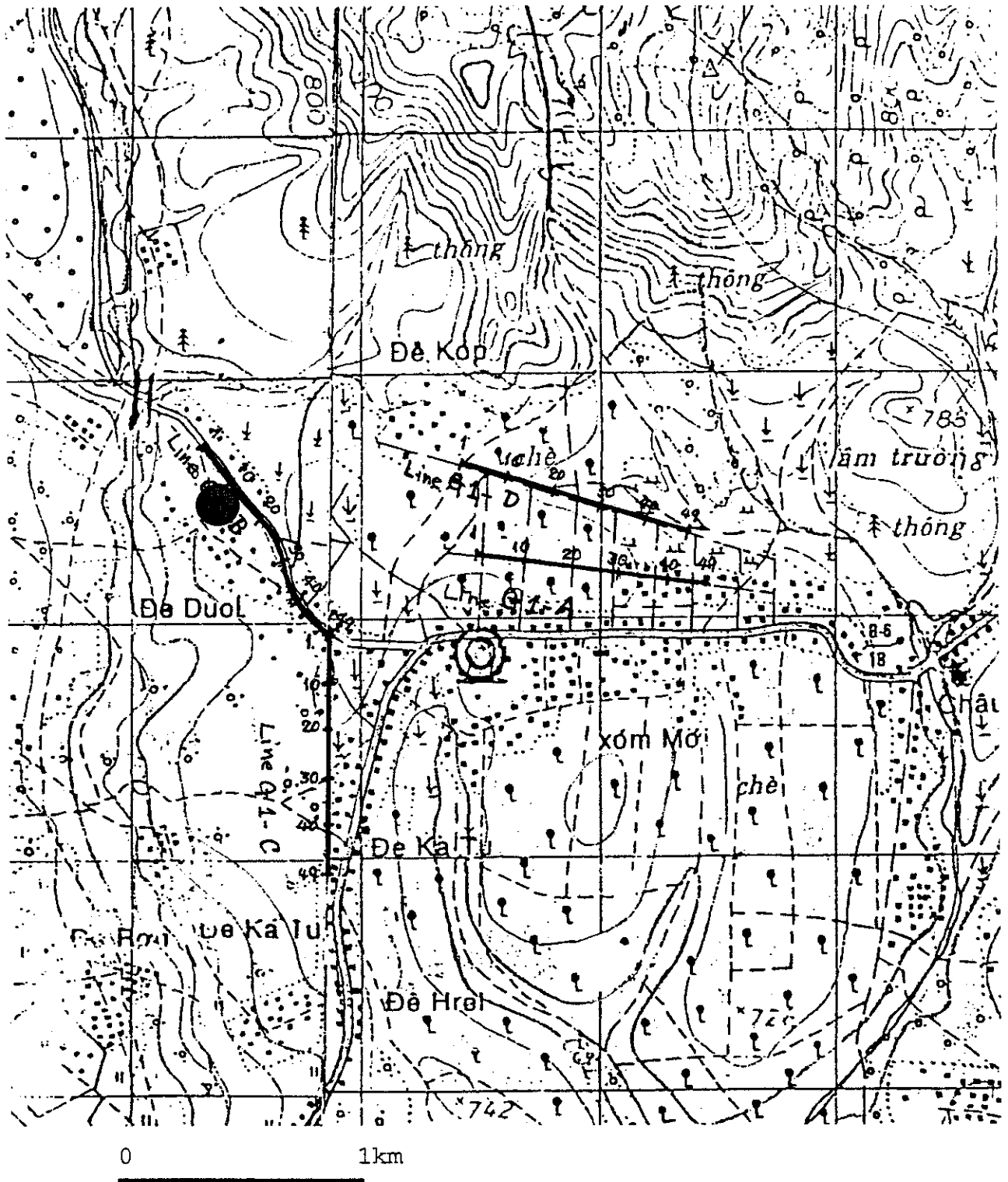


Figure G2. 3 Test Well and Geophysical Prospecting at Kong Tang Town (G1)

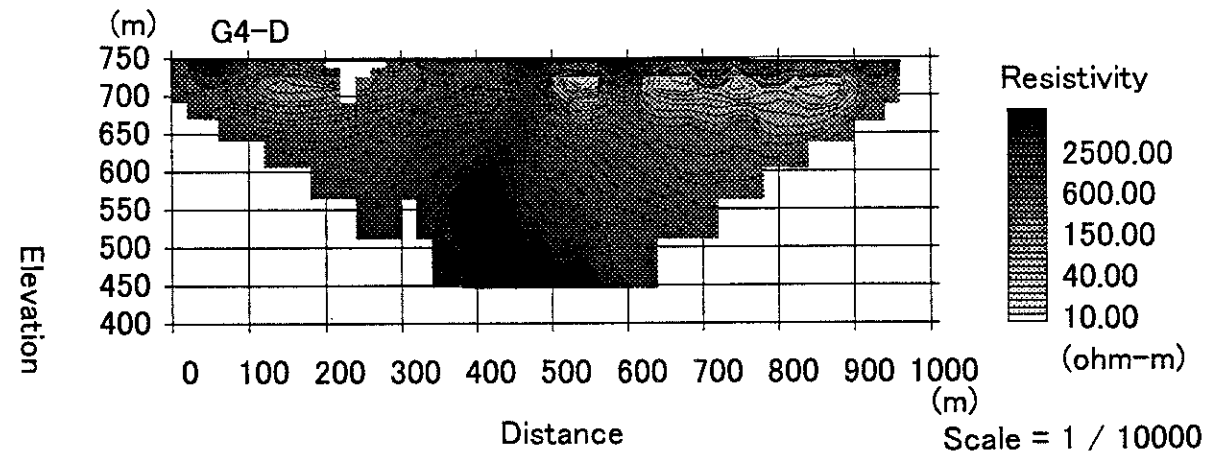
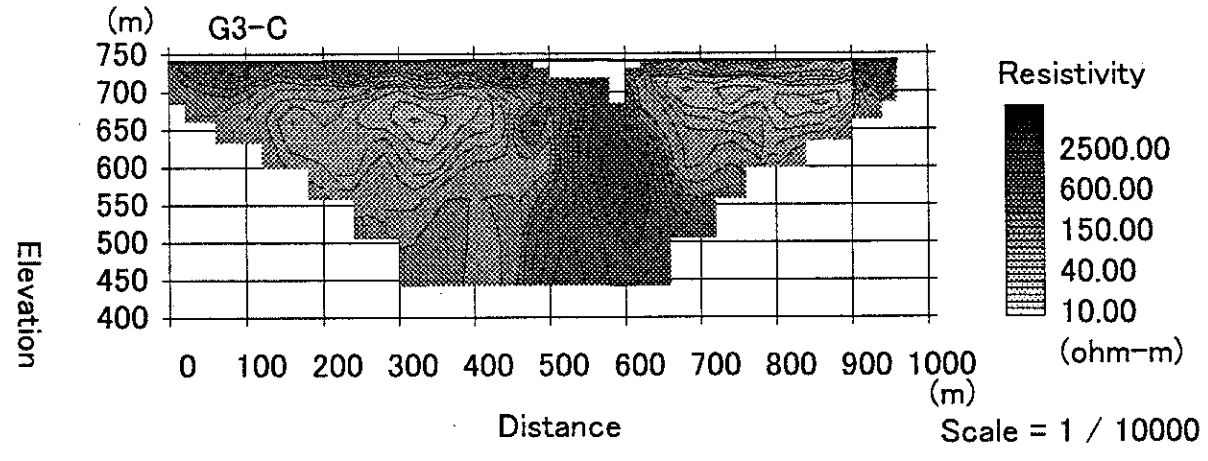
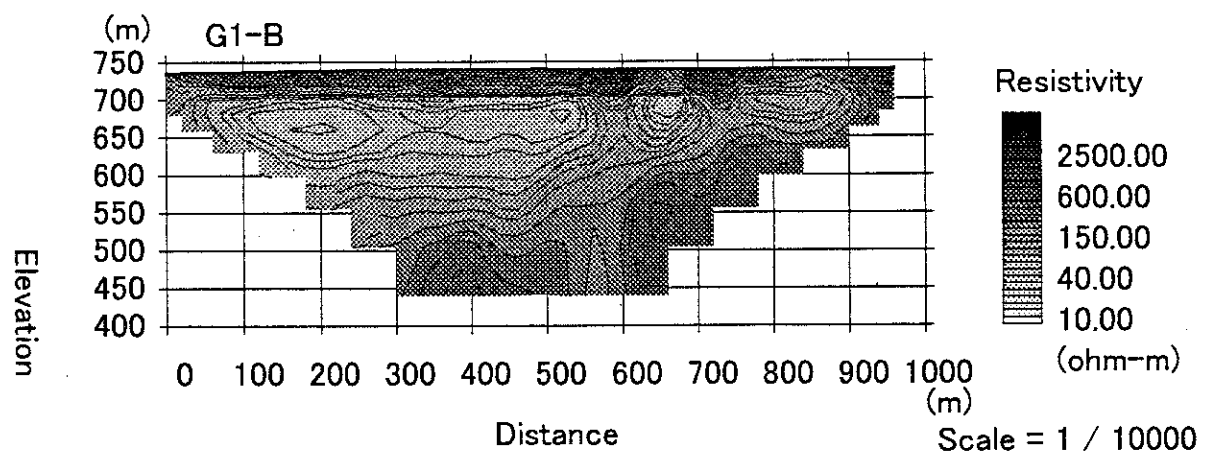
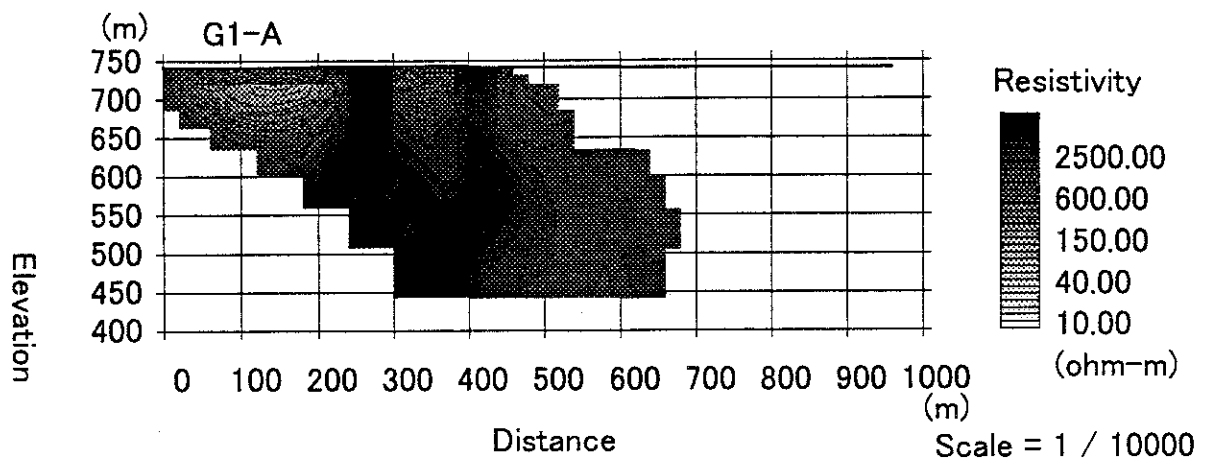


Figure G2. 4 Resistivity sections in Kong Tang Commune

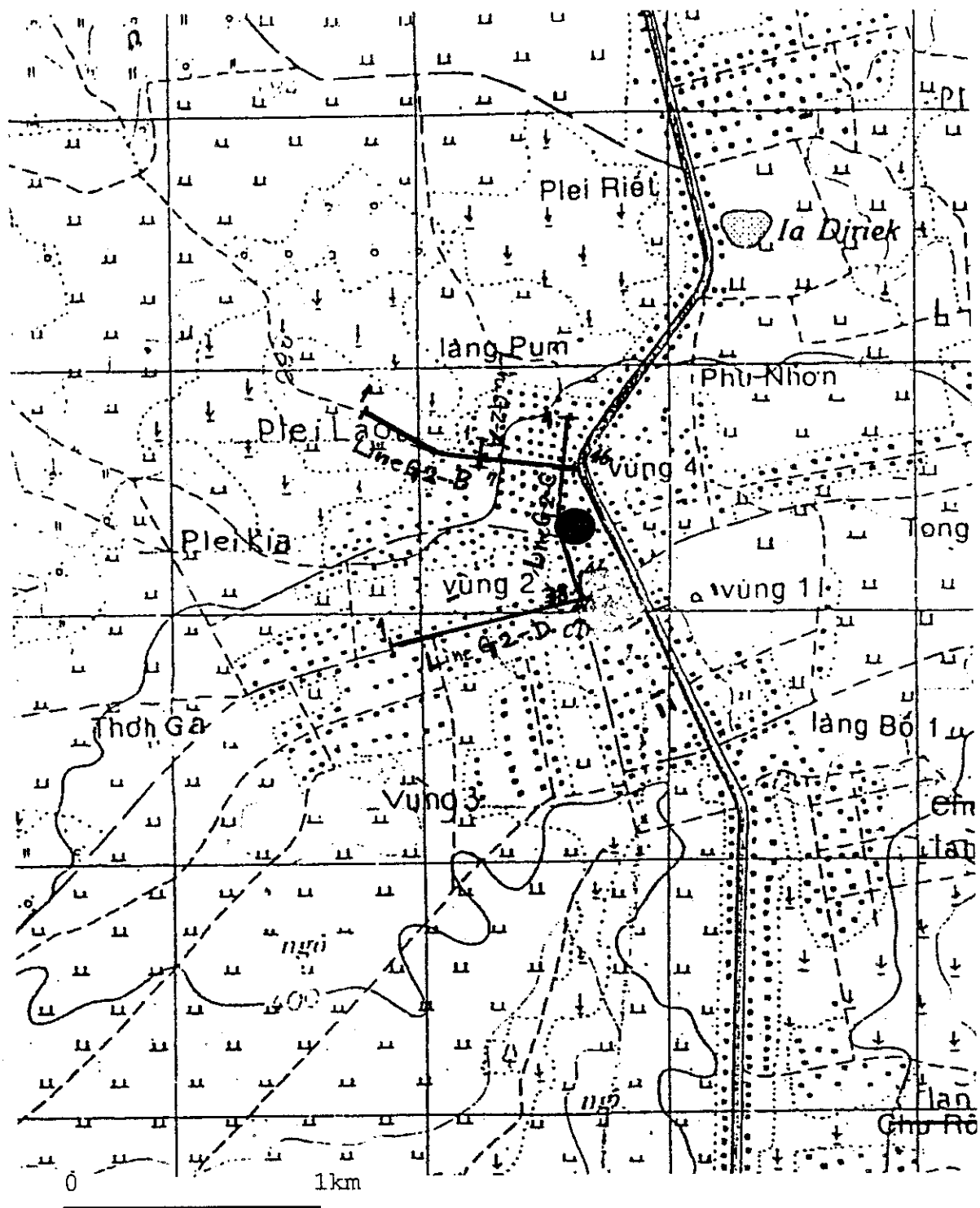


Figure G2. 5 Test Well and Geophysical Prospecting at Nhon Hoa Commune (G2)

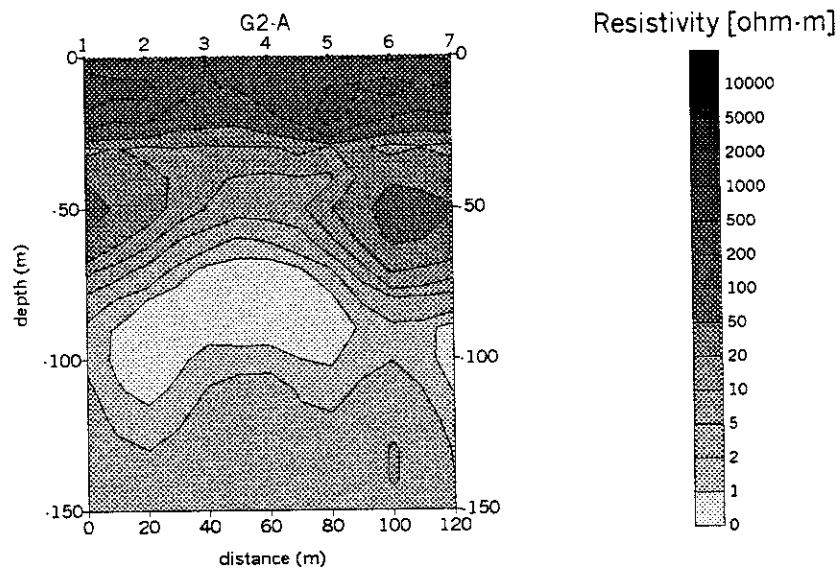


Figure G2. 6(1) Resistivity sections in Nhon Hoa Commune



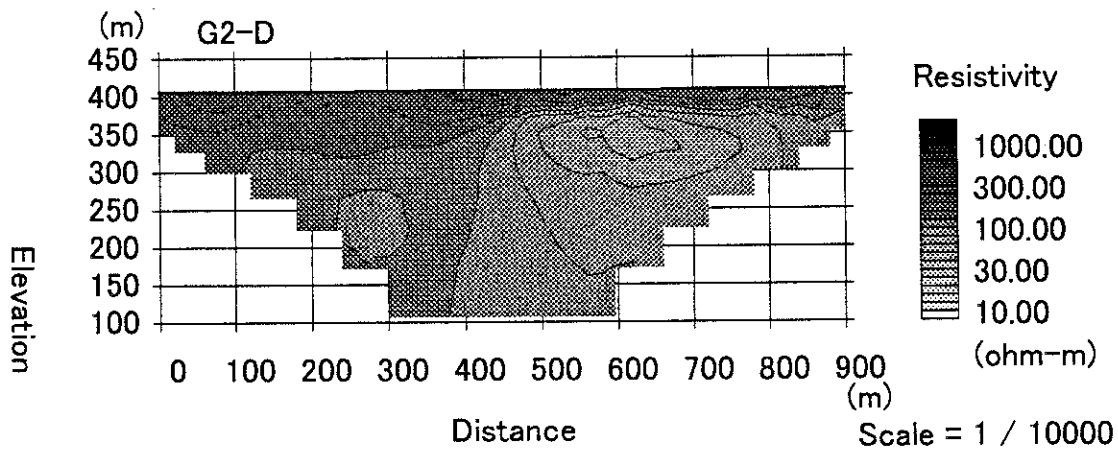
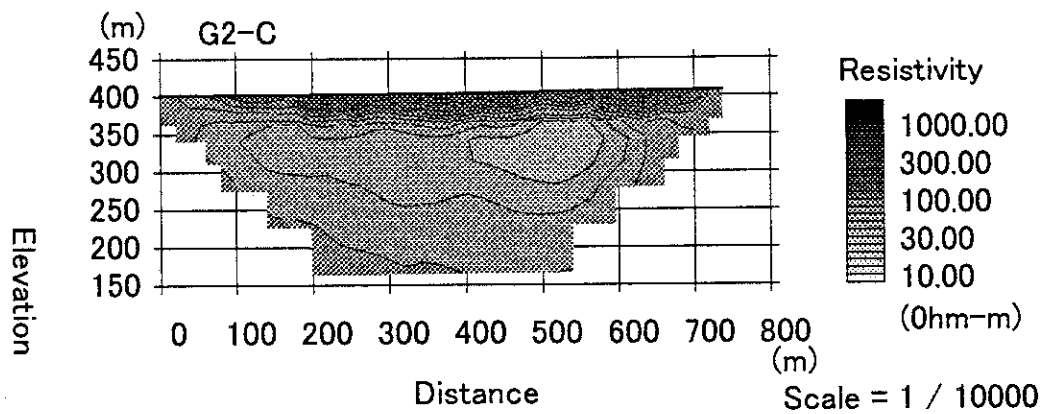
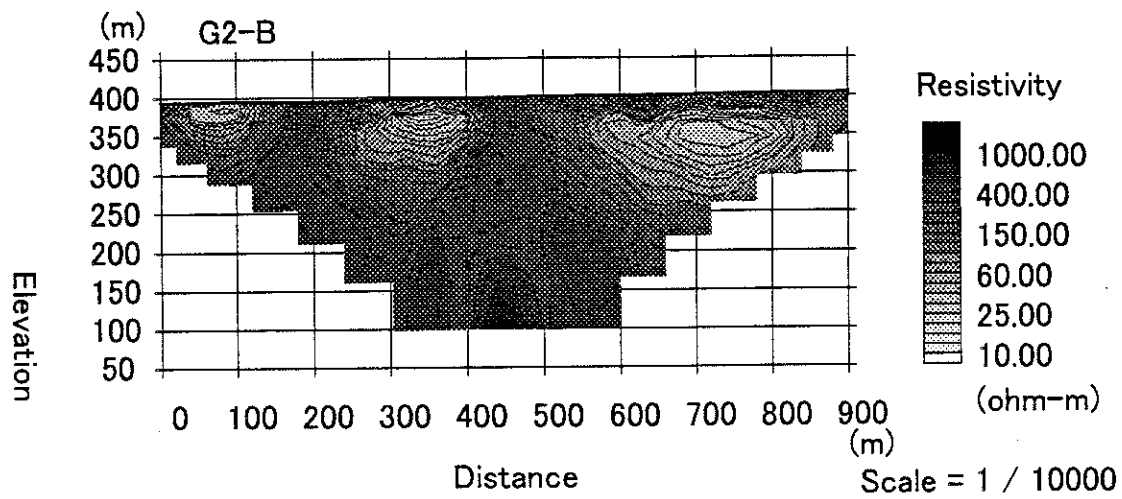


Figure G2. 6(2) Resistivity sections in Nhon Hoa Commune

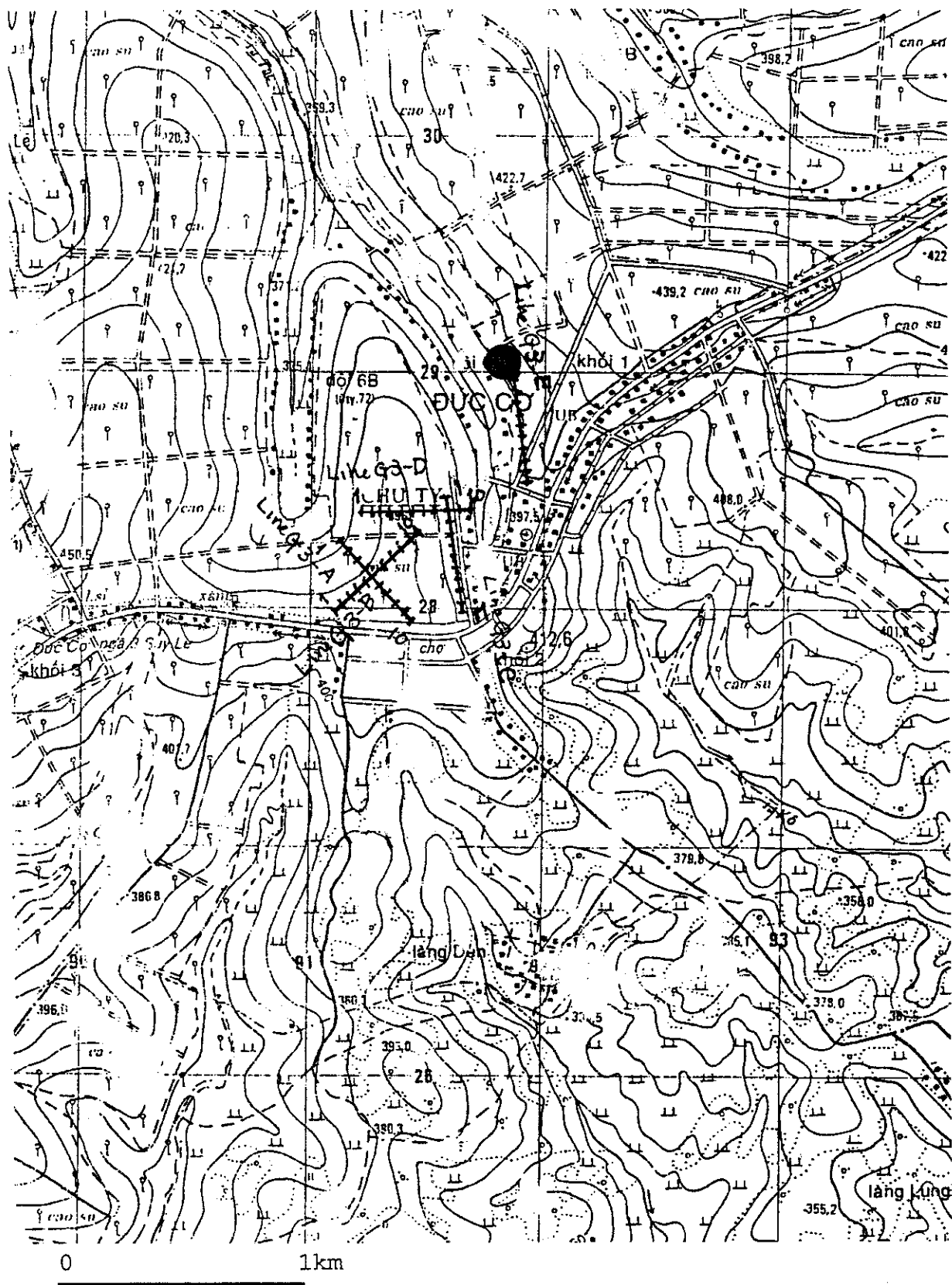


Figure G2. 7 Test Well and Geophysical Prospecting at Chu Ty Town (G3)

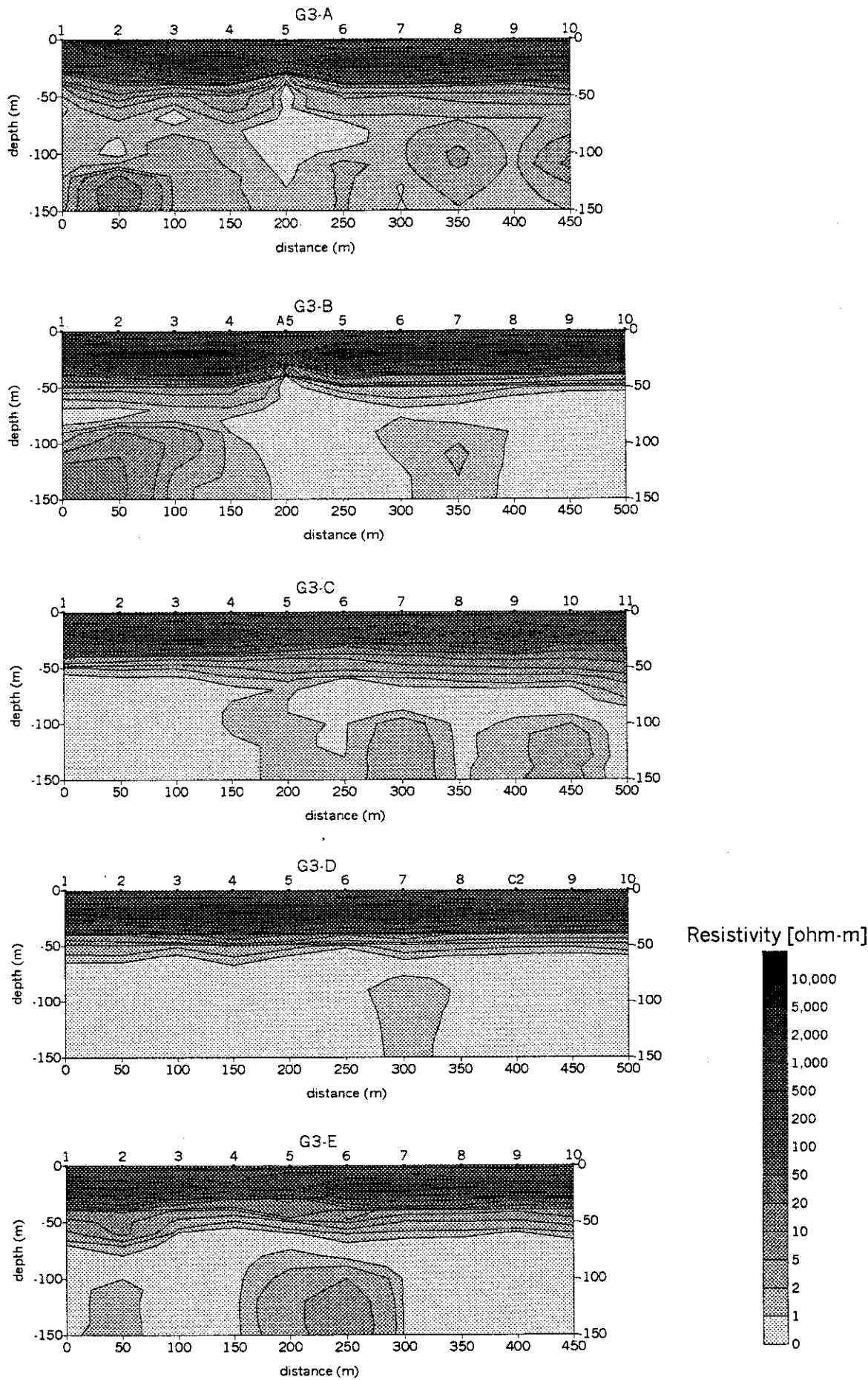


Figure G2. 8 Resistivity sections in Chu Ty Town

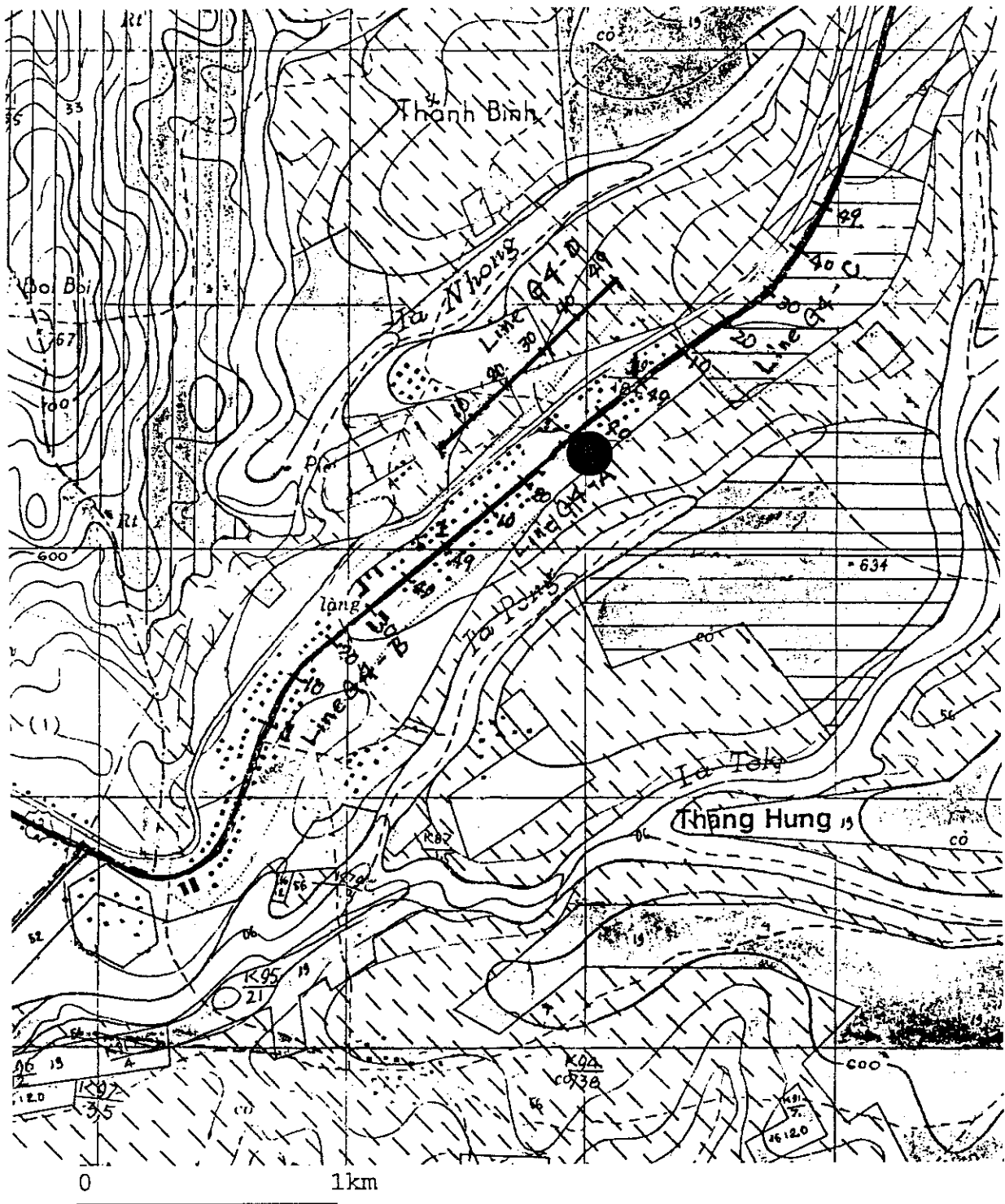


Figure G2. 9 Test Well and Geophysical Prospecting at Thang Hung Commune (G4)

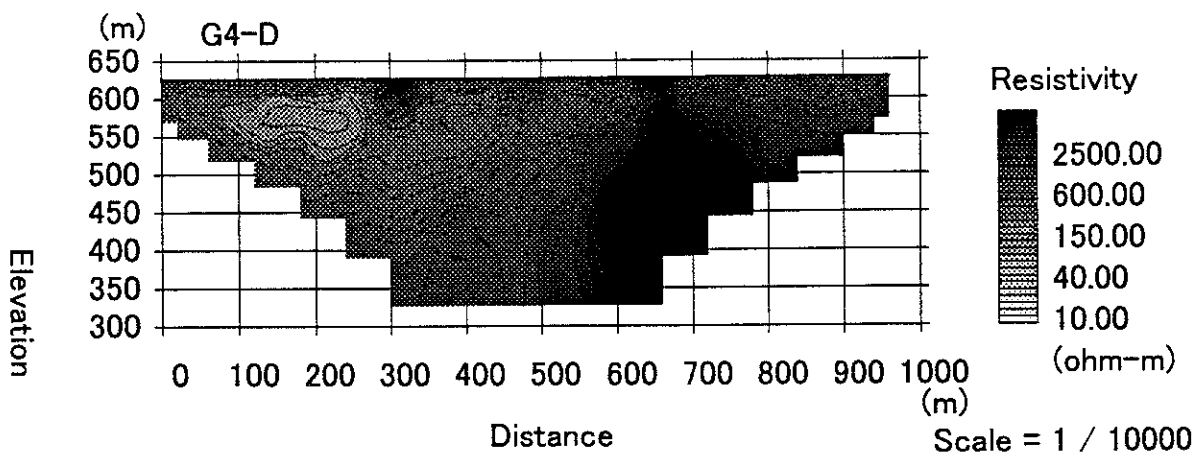
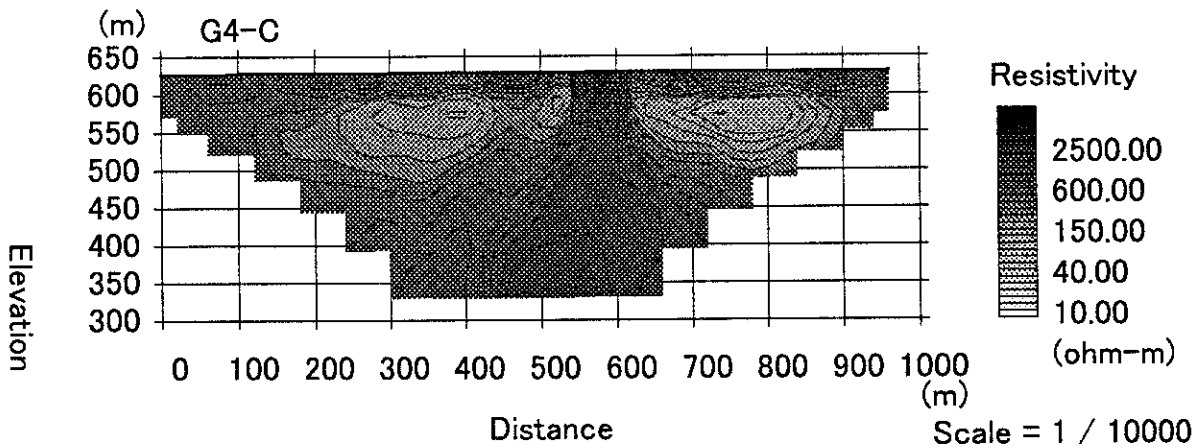
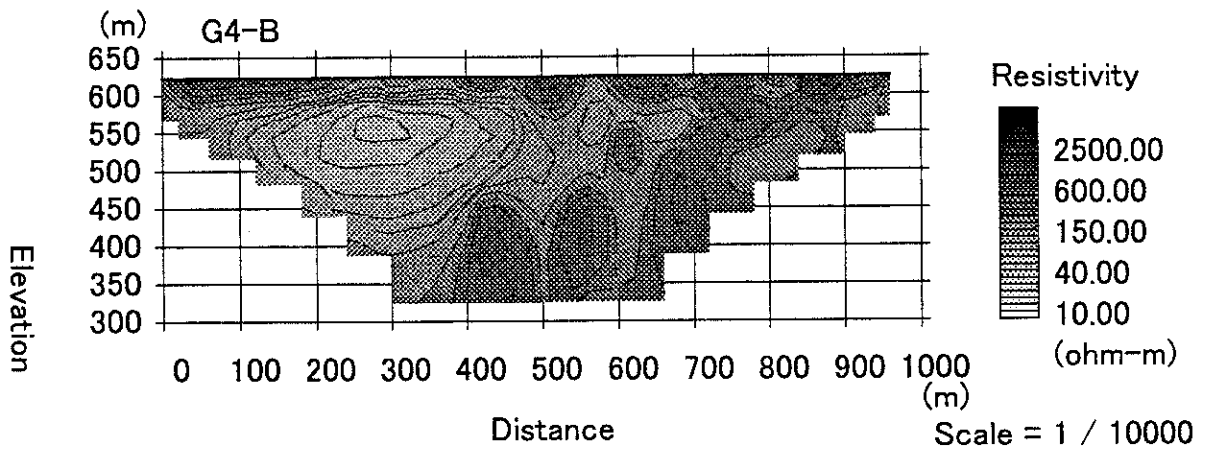
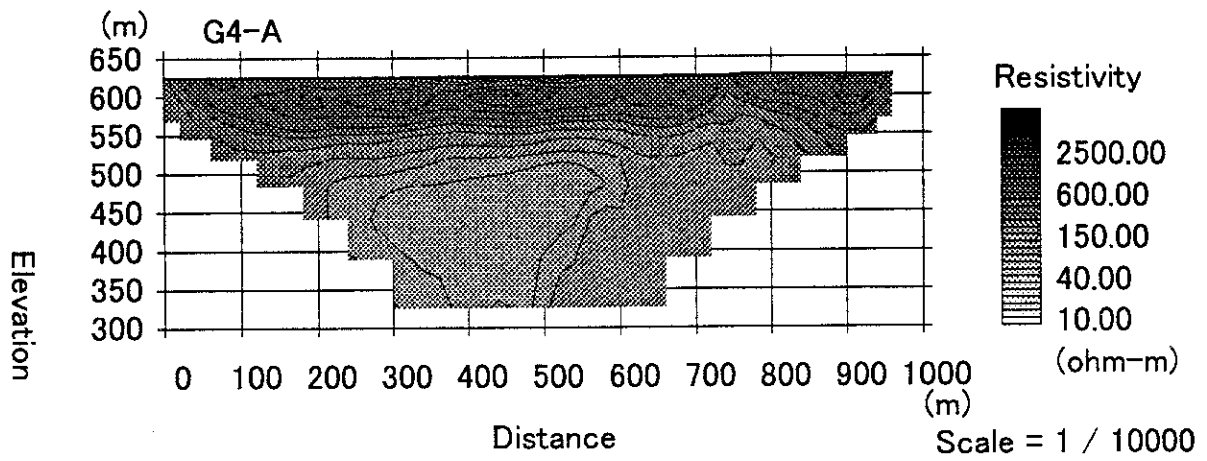


Figure G2. 10 Resistivity sections in Thang Hung Commune

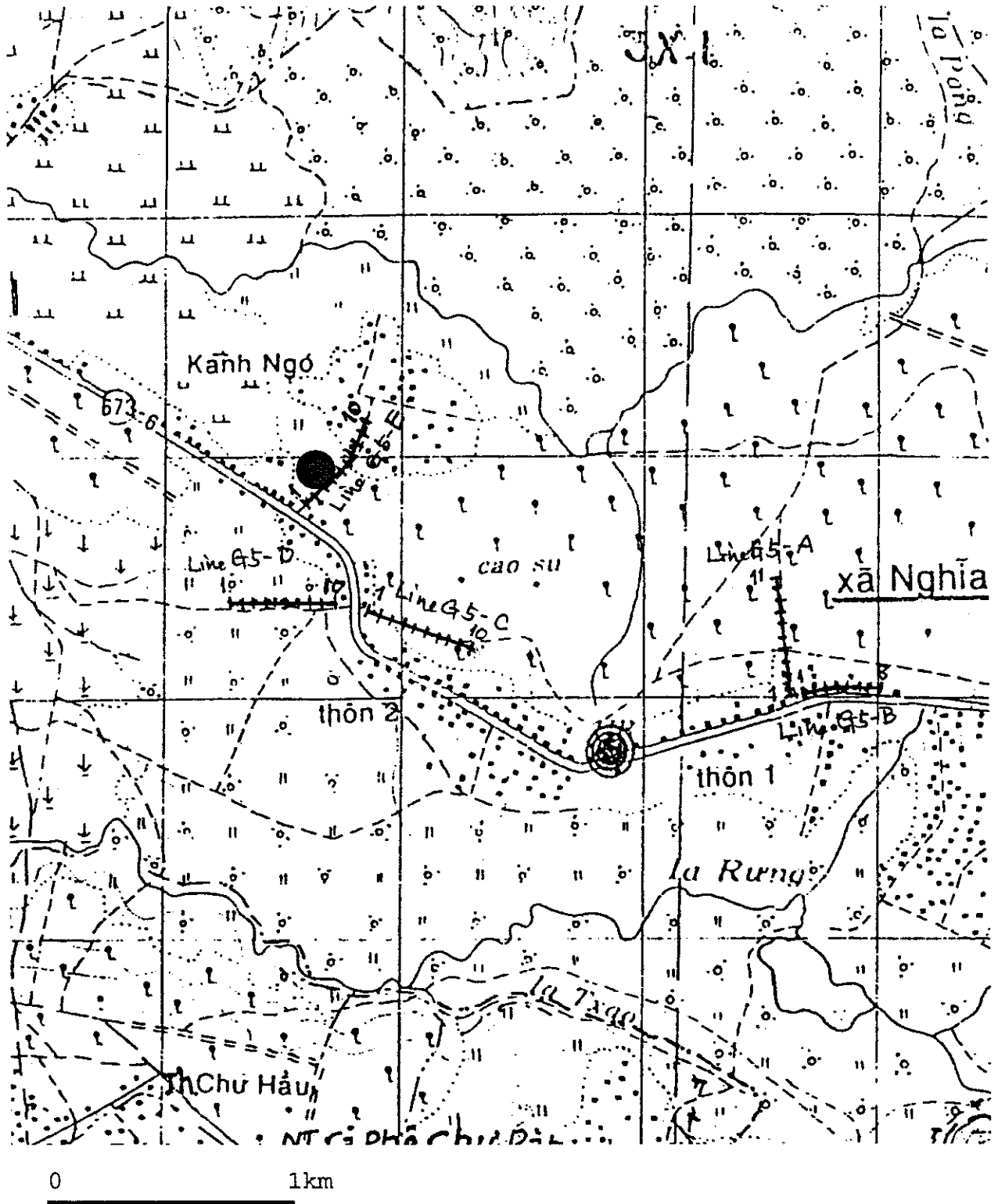


Figure G2. 11 Test Well and Geophysical Prospecting at Hghia Hoa Commune (G5)

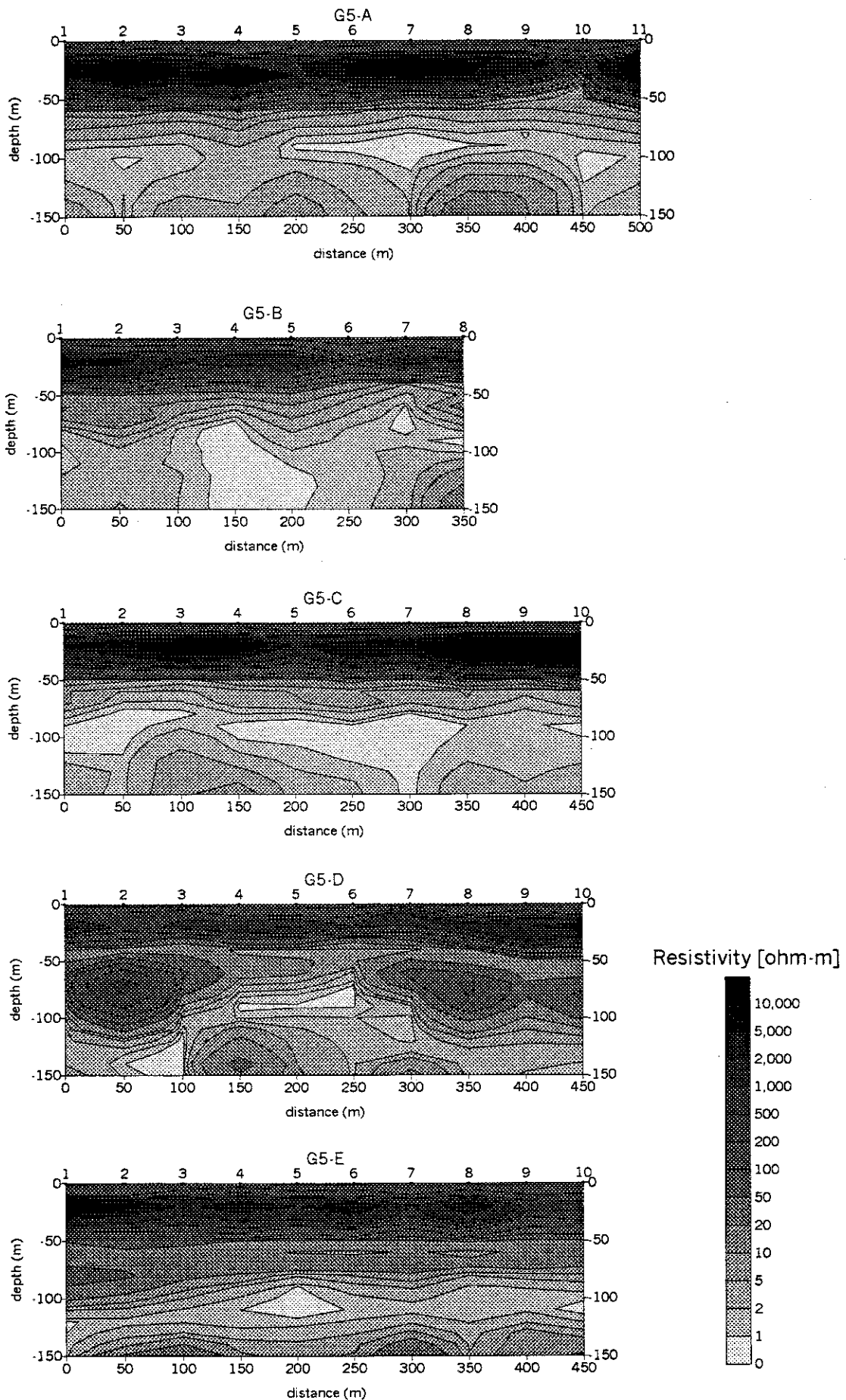


Figure G2. 12 Resistivity sections in Nghia Hoa Commune

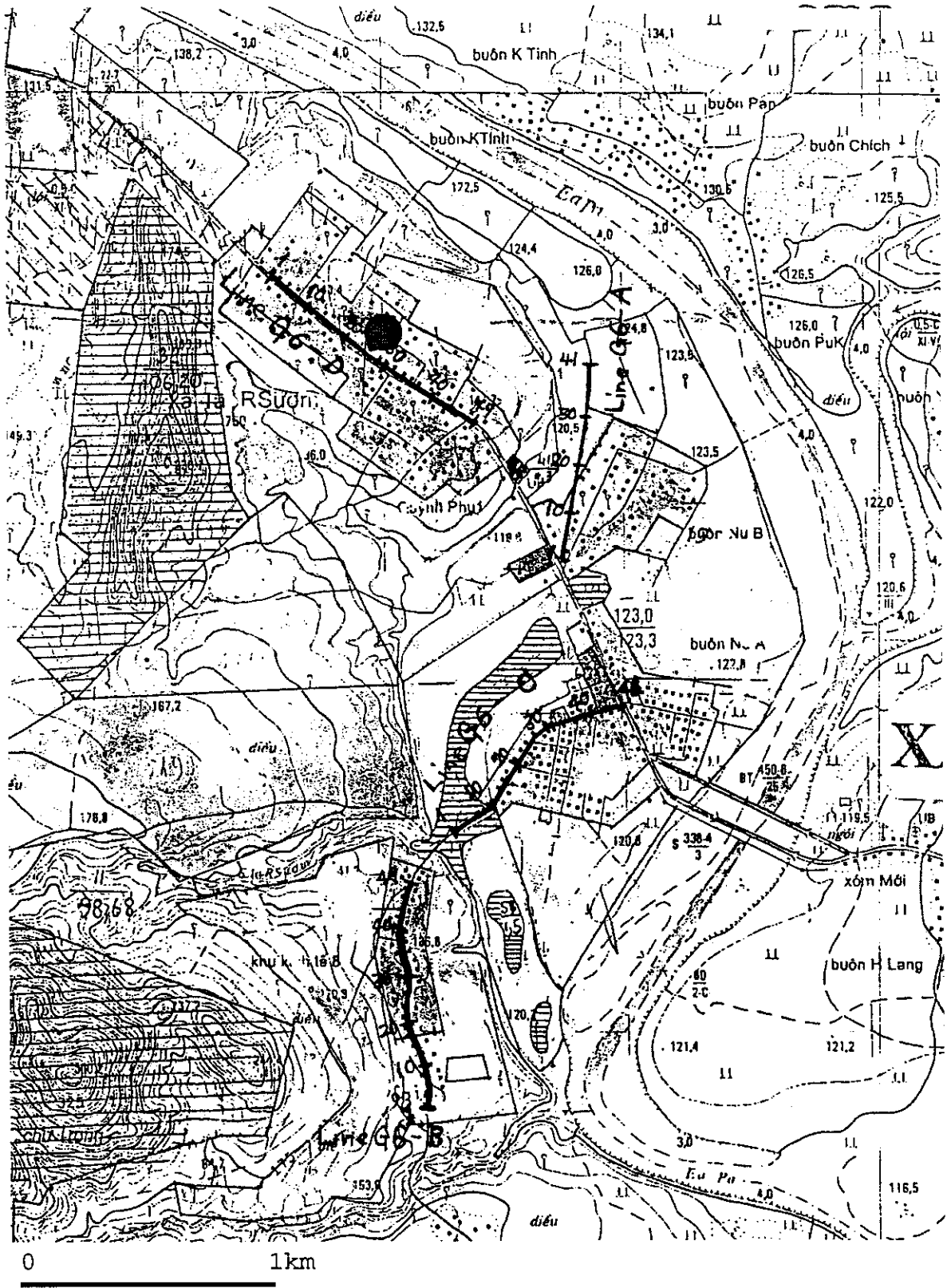


Figure G2. 13 Test Well and Geophysical Prospecting at Ia Rsiom Commune (G6)



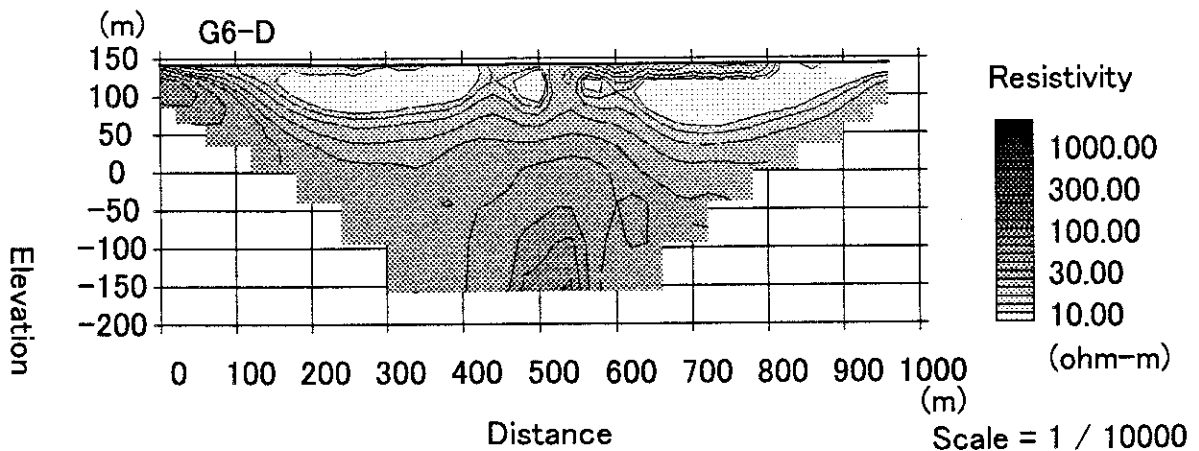
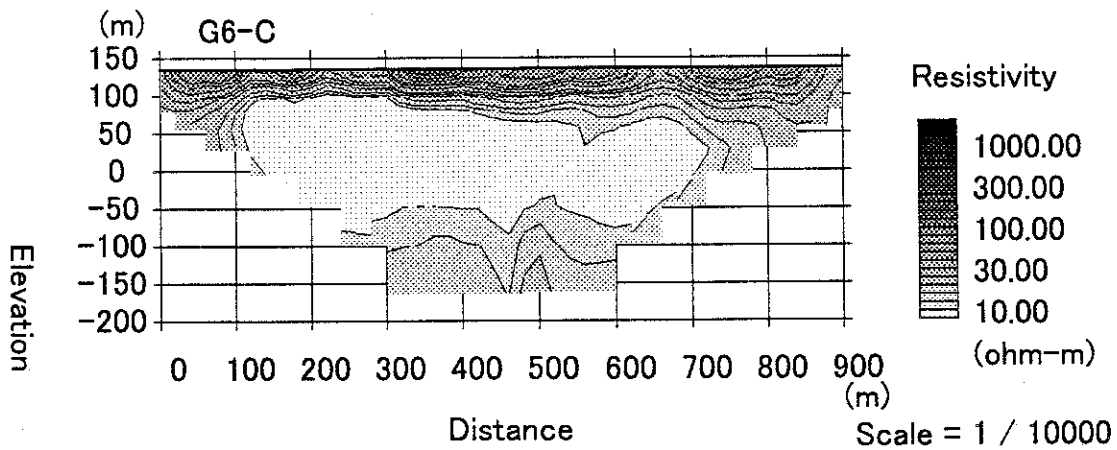
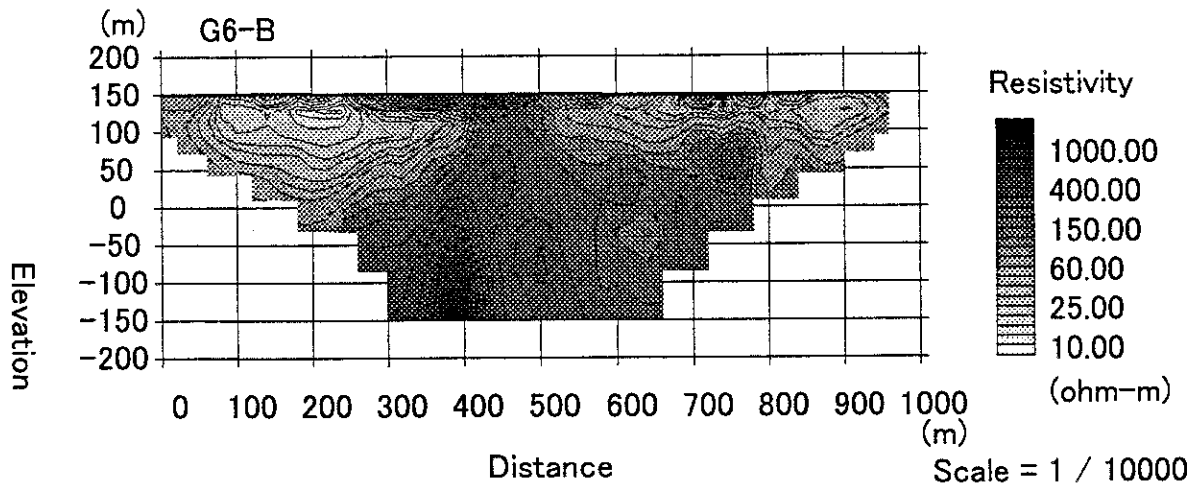
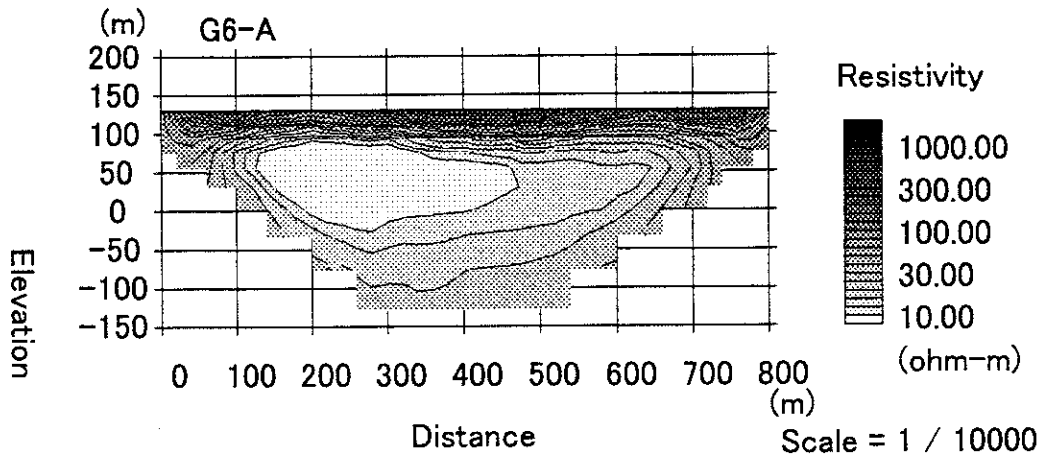


Figure G2. 14 Resistivity sections in Ia Rsiom Commune

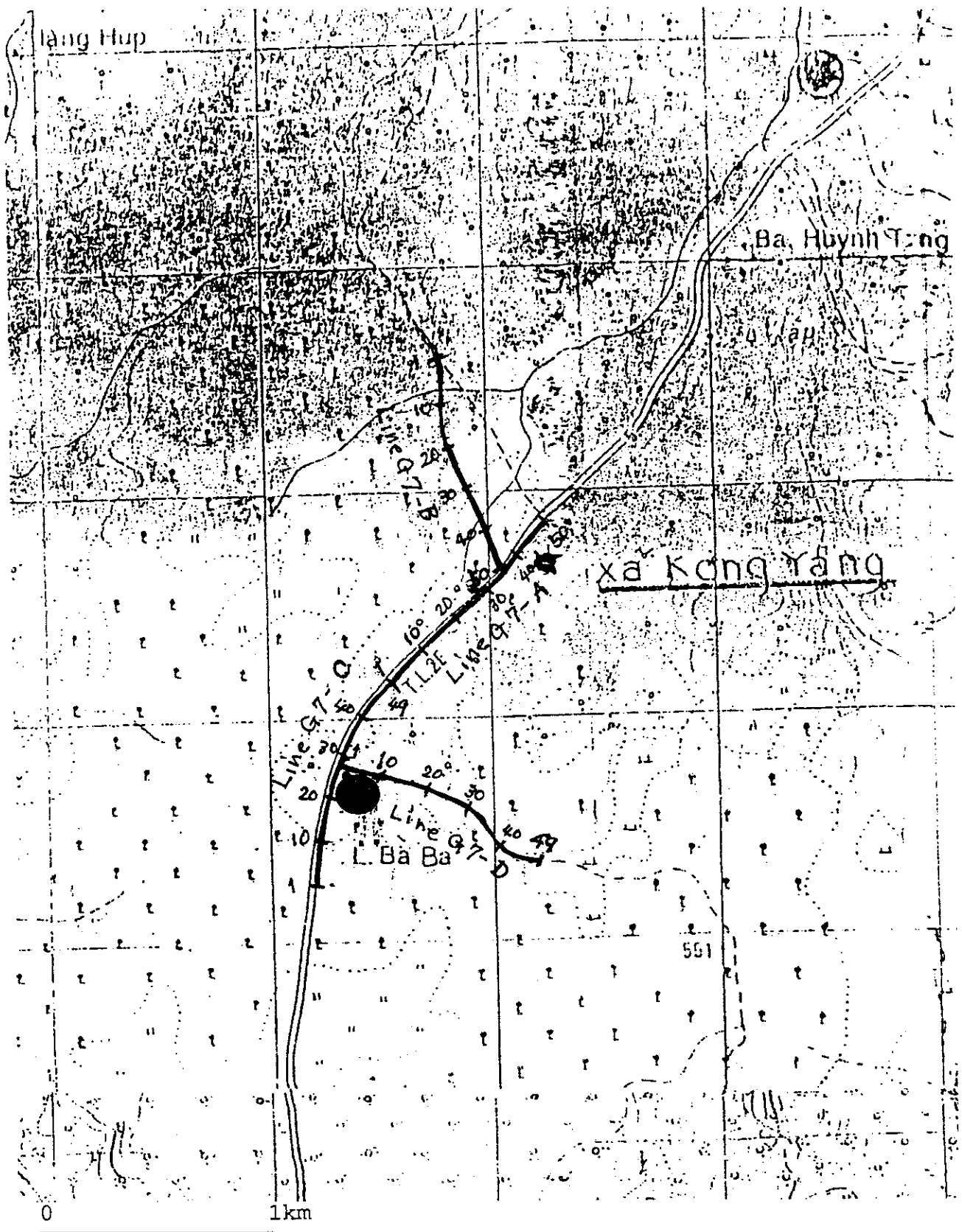


Figure G2. 15 Test Well and Geophysical Prospecting at Kong Yang Commune (G7)

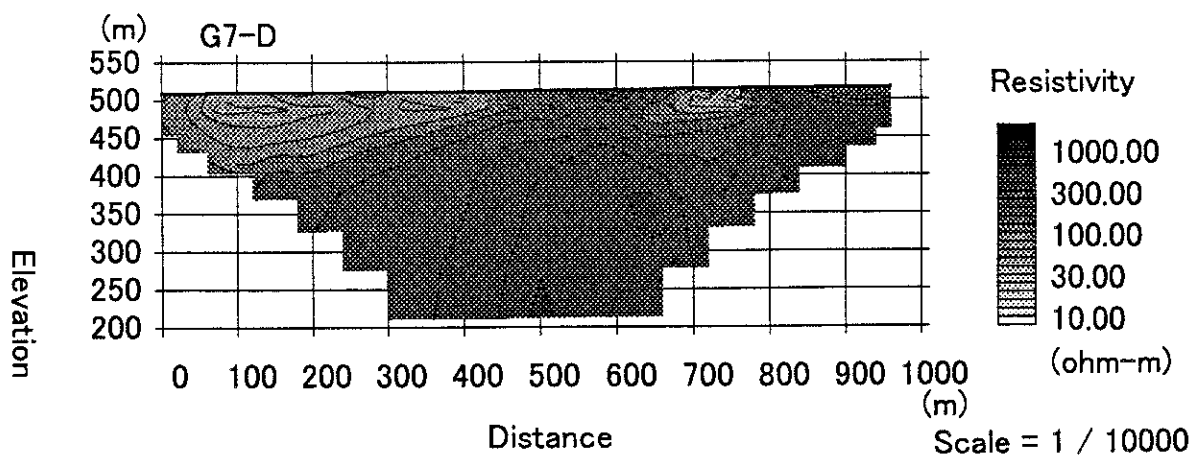
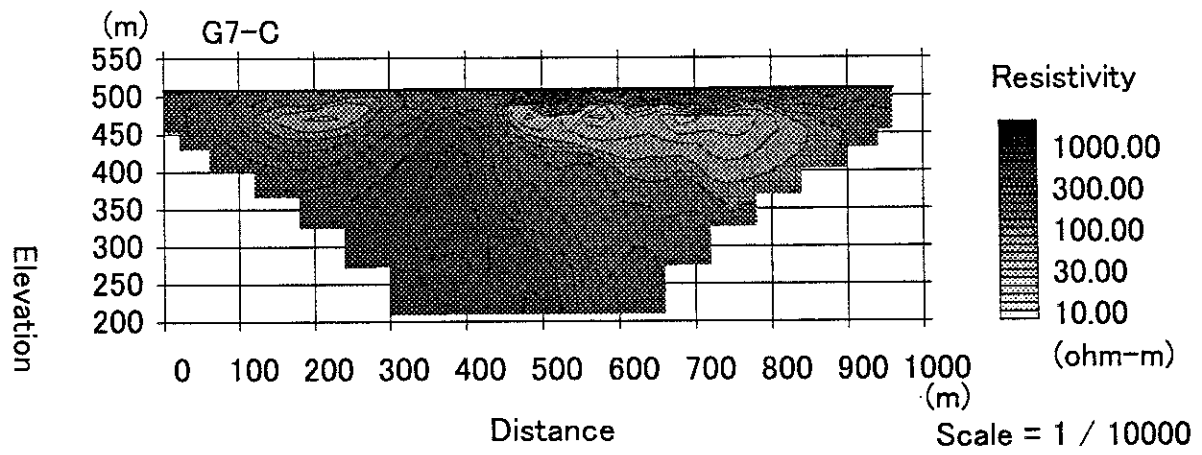
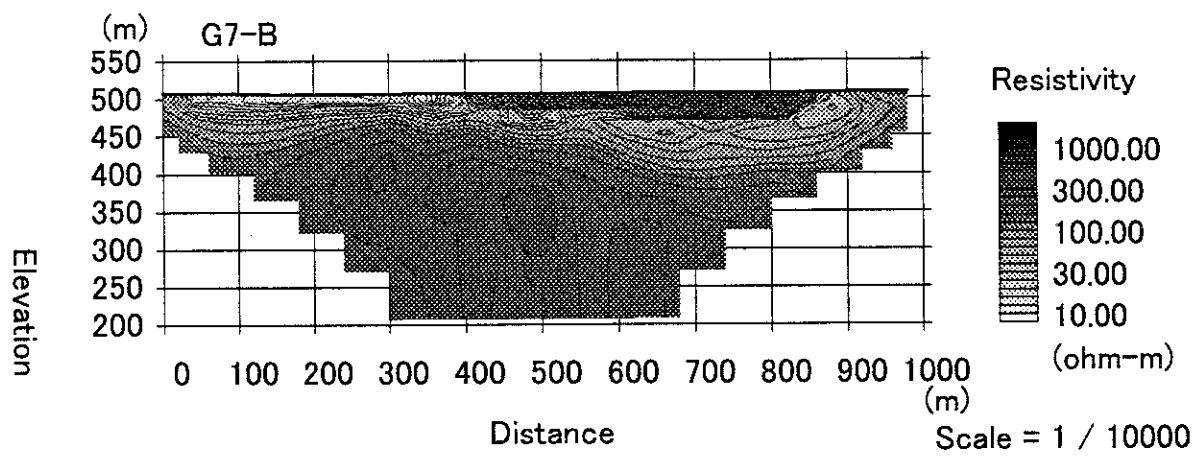
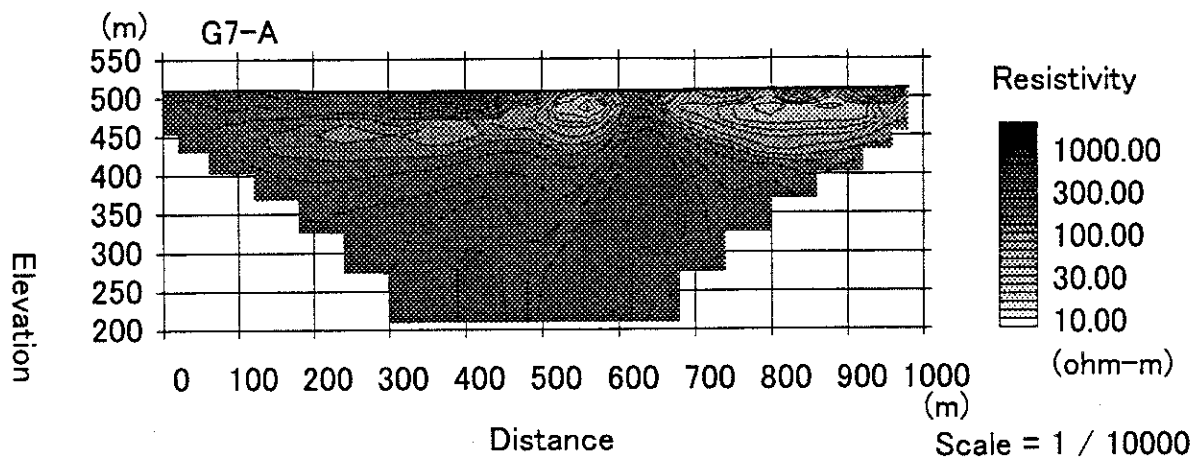


Figure G2. 16 Resistivity sections in Kong Yang Commune