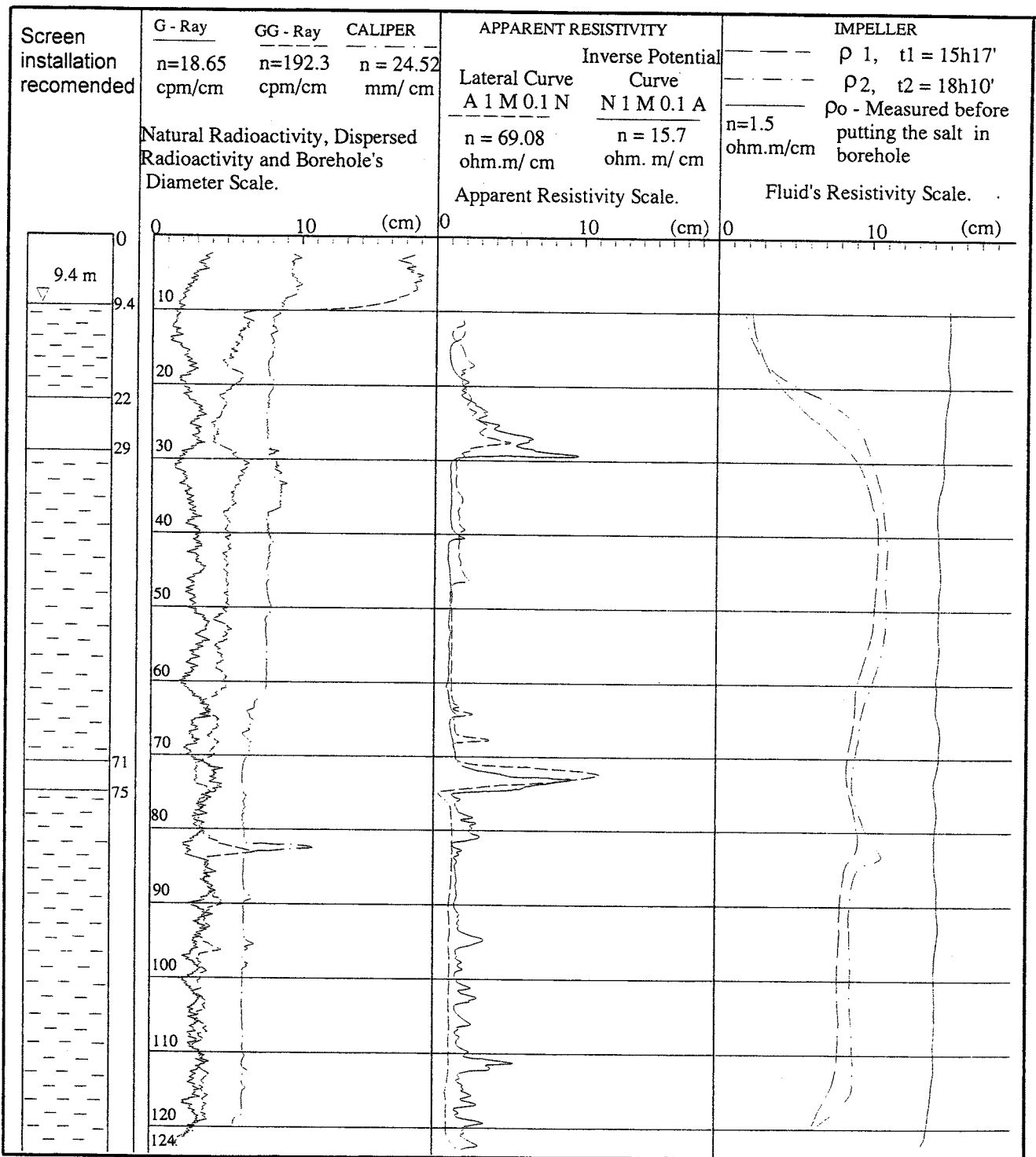
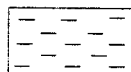


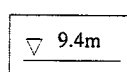
Chapter 4
Logging Graph



LEGEND

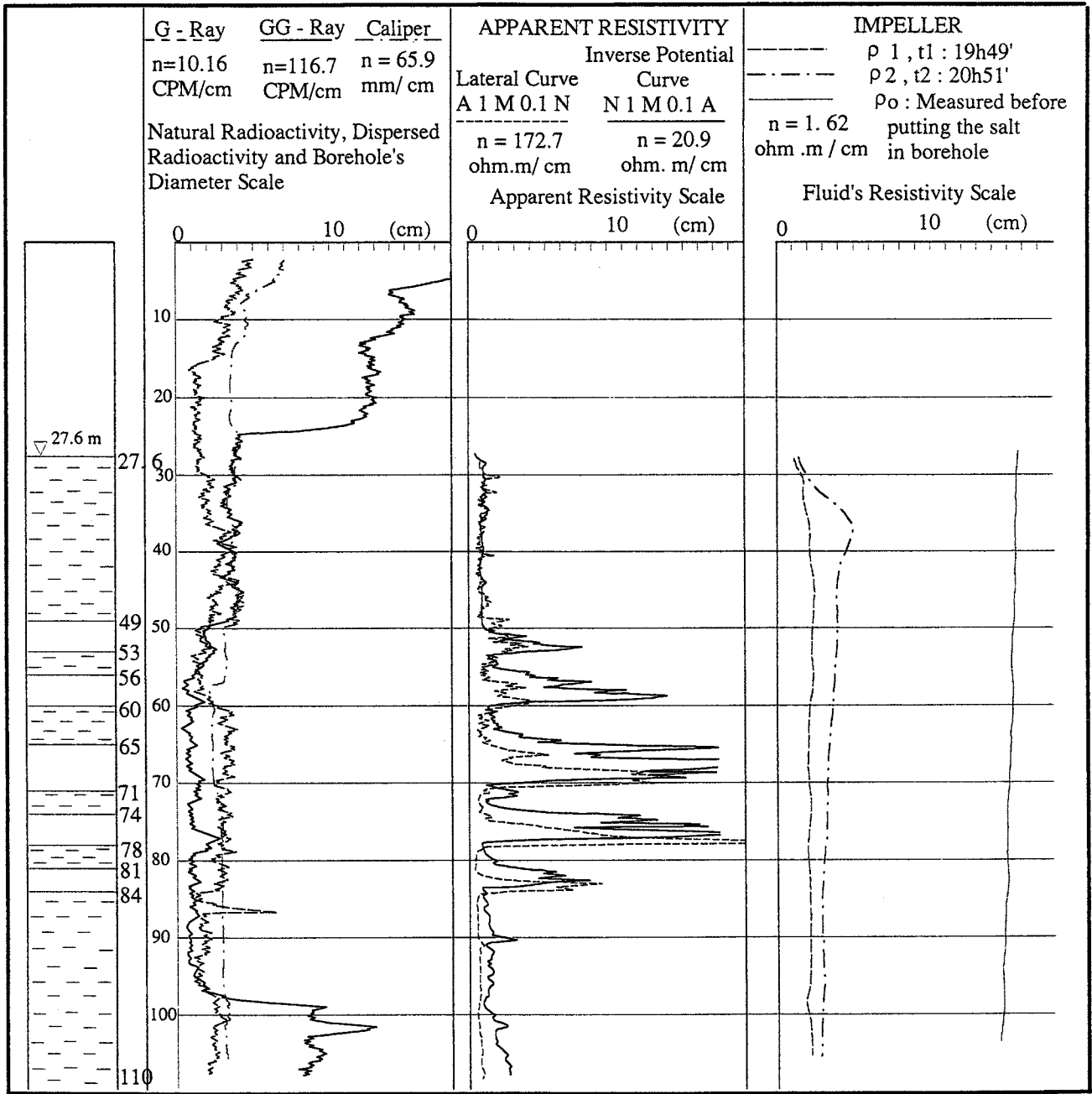


Supposed water bearing zones

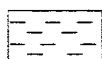


Depth to static water level in borehole, determined at moment of logging by means of log parameters.

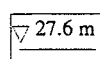
Figure D4. 1 Geophysical Logging Test of D1, Krong Nang Town



LEGEND

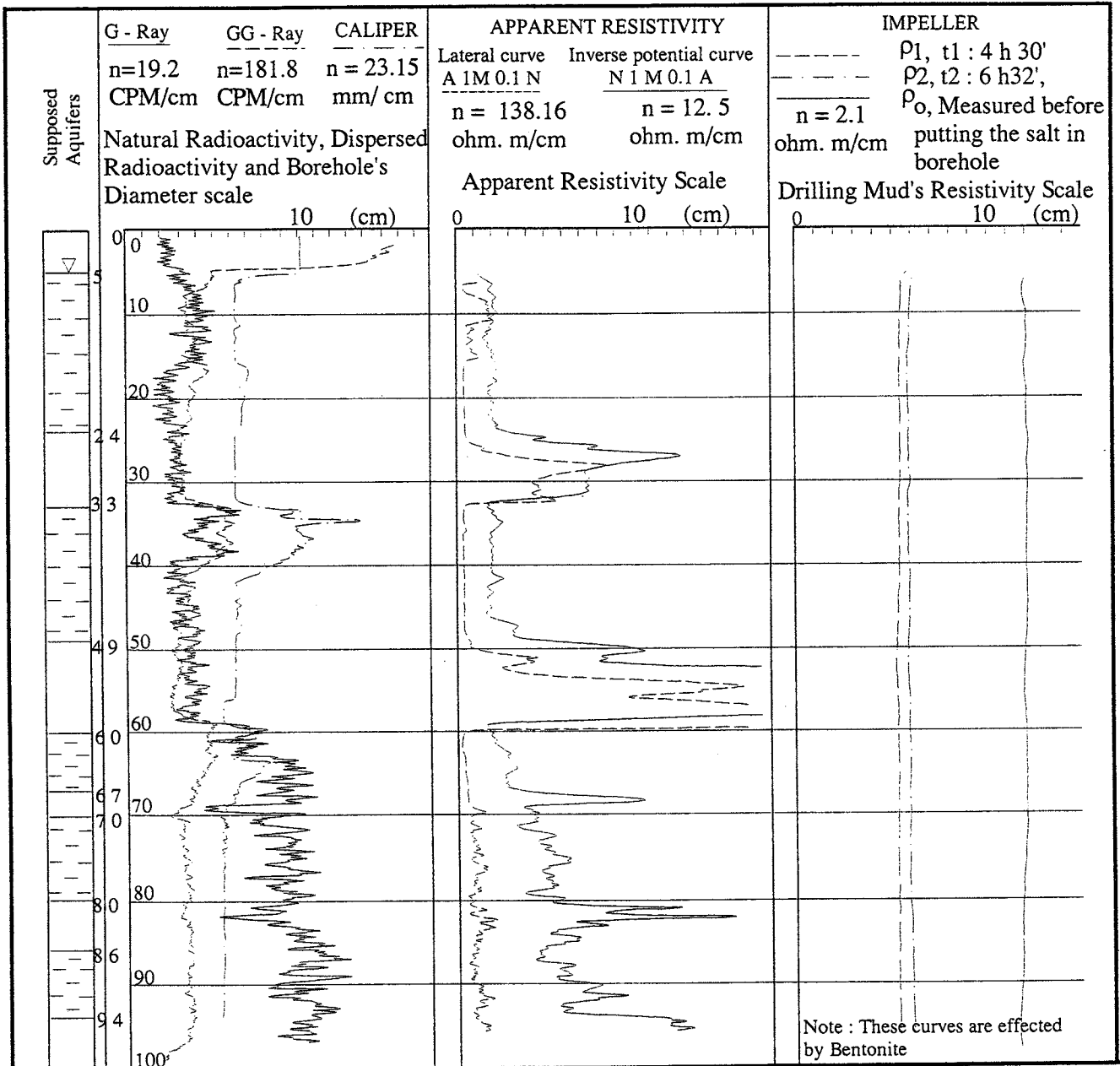


Supposed water - bearing zones.



Depth to static water level in borehole, determined at the moment of logging by means of log parameters.

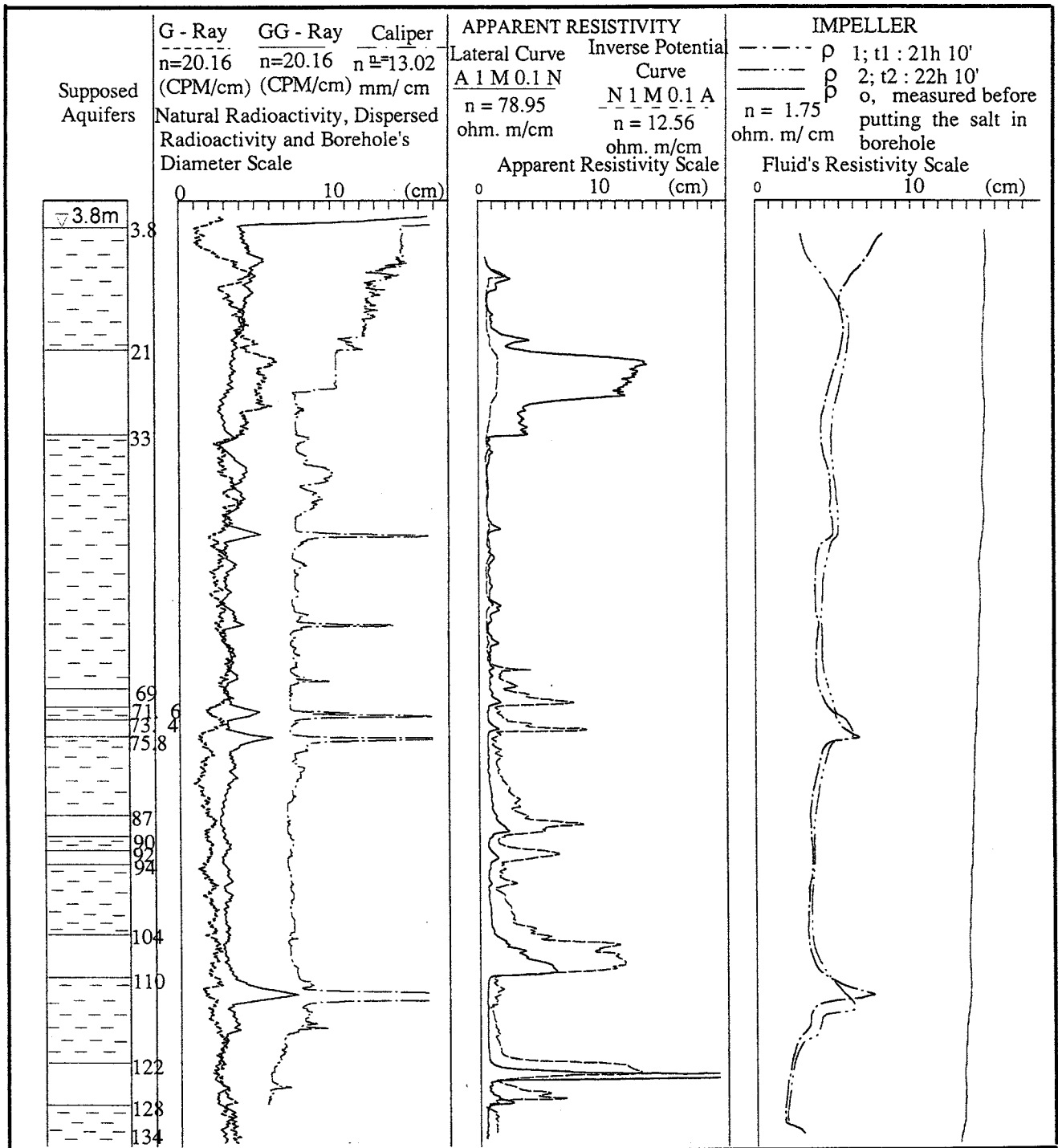
Figure D4. 2 Geophysical Logging Test of D2, Ea Drang Town



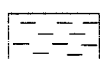
LEGEND

- 
Supposed water bearing zones
- 
Drilling mud level at the moment of logging determined by mean of log parameters.

Figure D4. 3 Geophysical Logging Test of D3, Krong Buk Commune



LEGEND

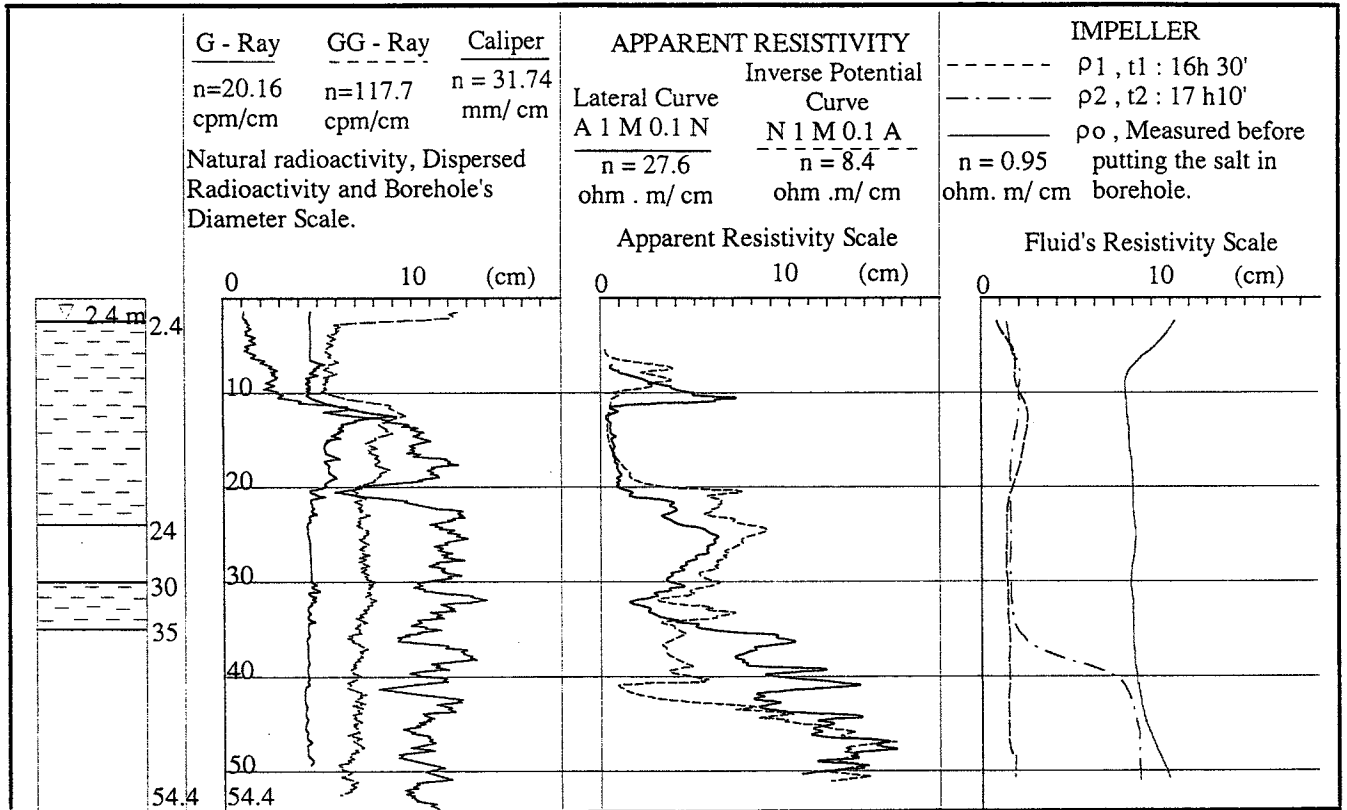


Supposed water - bearing zones

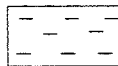


Depth to groundwater level in borehole, determined at the moment of logging by means of log parameters.

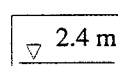
Figure D4. 4 Geophysical Logging Test of D4, Ea Drong Commune



LEGEND

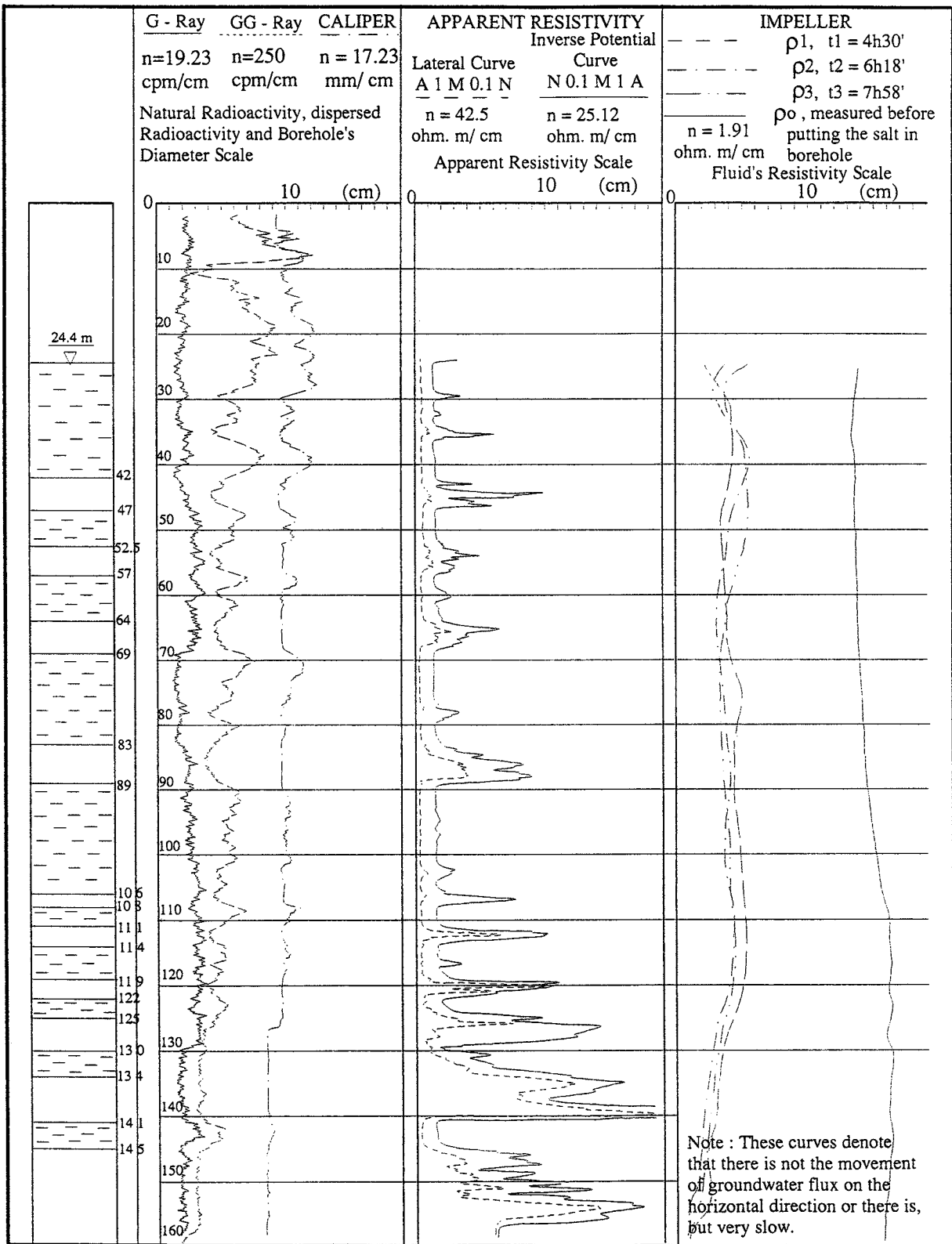


Supposed water bearing zone.



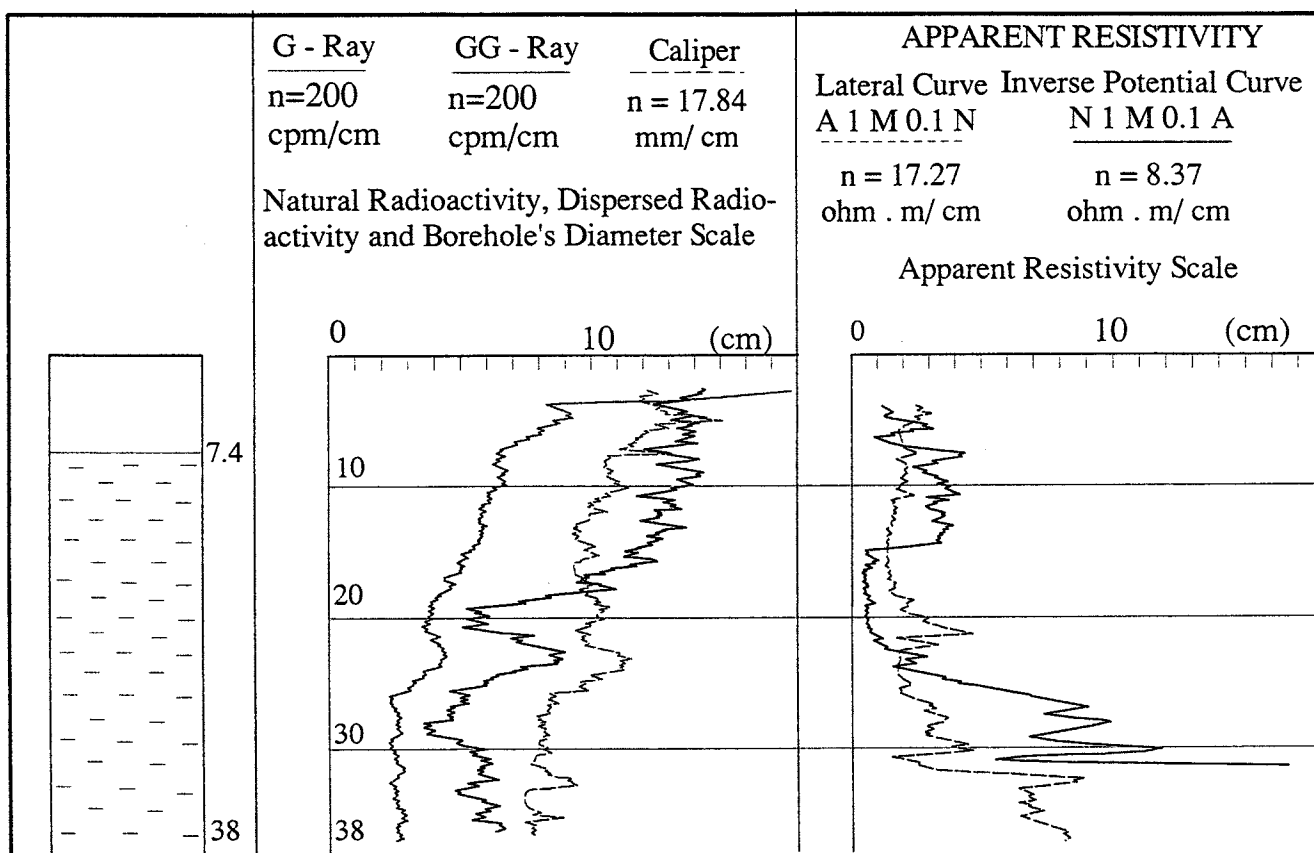
Depth to static water level in borehole, determined at moment of logging by means of log parameters.

Figure D4. 5 Geophysical Logging Test of D5, Ea Wer Commune

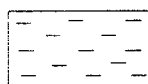


LEGEND Supposed water bearing zones. Depth to static water level in borehole; determinated at moment of logging by means of log parameters.

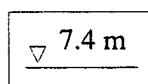
Figure D4. 6 Geophysical Logging Test of D6, Kien Duc Town



LEGEND



Supposed water - bearing zones



Depth to drilling mud level, determined at the moment of logging by means of log parameters

Figure D4. 7 Geophysical Logging Test of D7, Krong Kmar Town