

Chapter 2

Data of Electro-magnetic Survey and Electrical Soundings

Table D2. 1 Quantity of Geophysical Prospecting Work
Amounts of Geophysical Prospecting

Province	Commune	Electrical sounding Line	Electromagnetic sounding Point
	Bo Y	-	47
	Dak Su	-	50
Kon Tum	Dak Ui	4	-
	Dak Hring	4	-
	Sa Nghia	-	51
	Chu Hreng	4	-
	Kong Tang	4	-
	Nhon Hoa	3	7
	Chu Ty	-	51
Gia Lai	Thang Hung	4	-
	Nghia Hoa	-	49
	Ia Rsuom	4	-
	Kong Yang	4	-
	Krong Nang	4	-
	Ea Drang	4	-
	Krong Buk	-	55
Dak Lak	Ea Drong	-	50
	Ea Wer	-	52
	Kien Duc	2	4
	Krong Kmar	2	53
Total		43	469

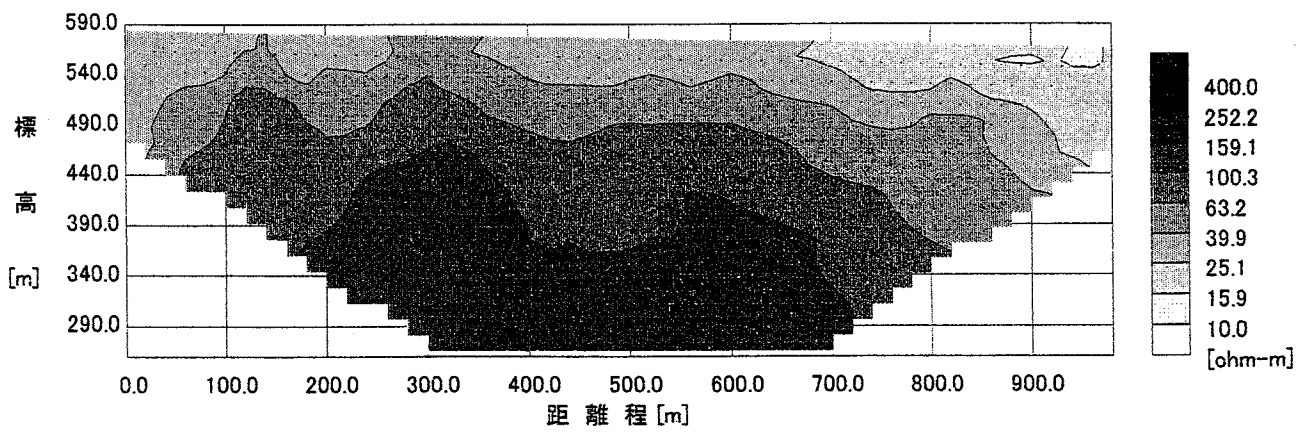
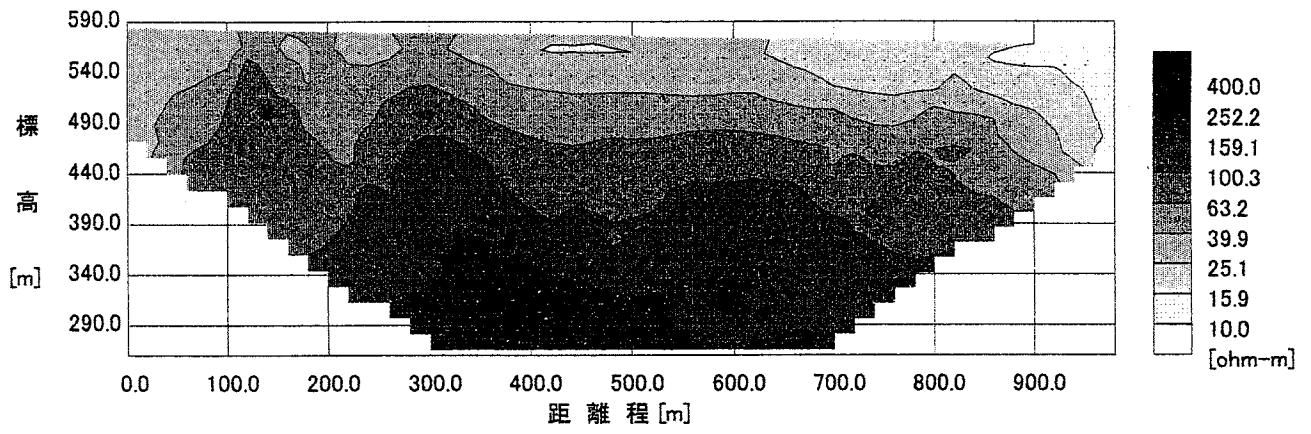


Figure D2. 1 Apparent resistivity sections

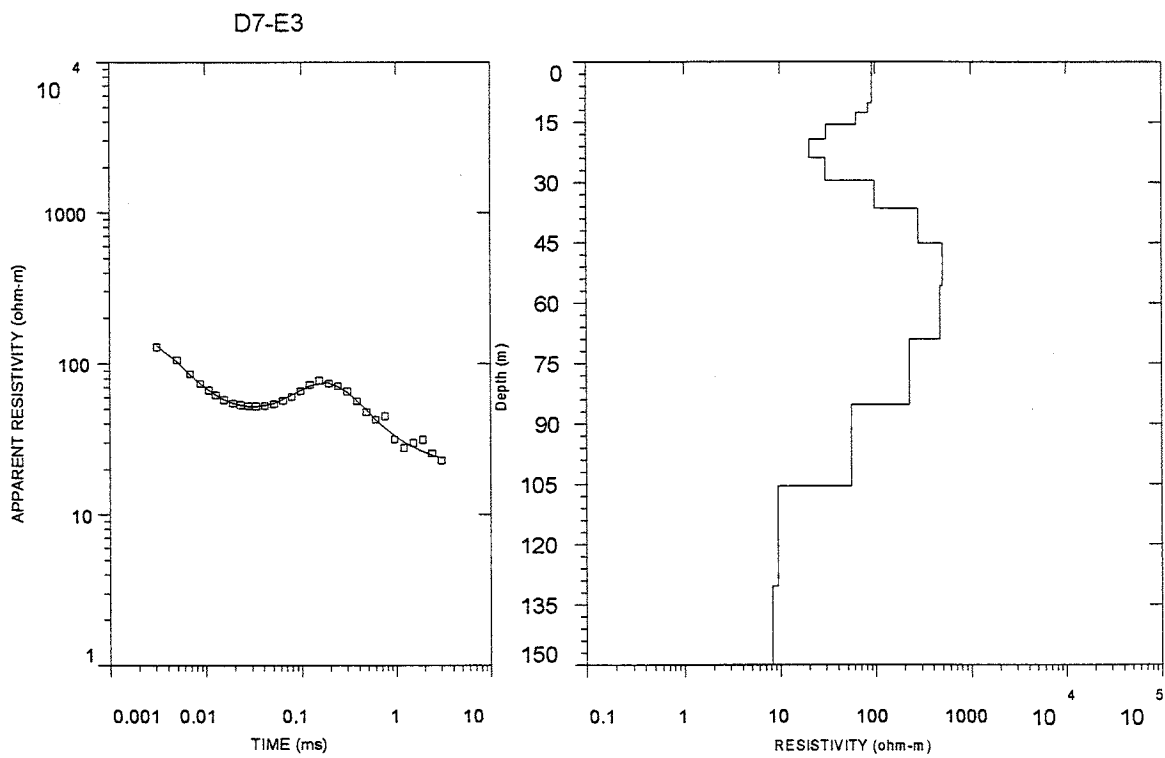


Figure D2. 2 Result of one-dimensional inversion

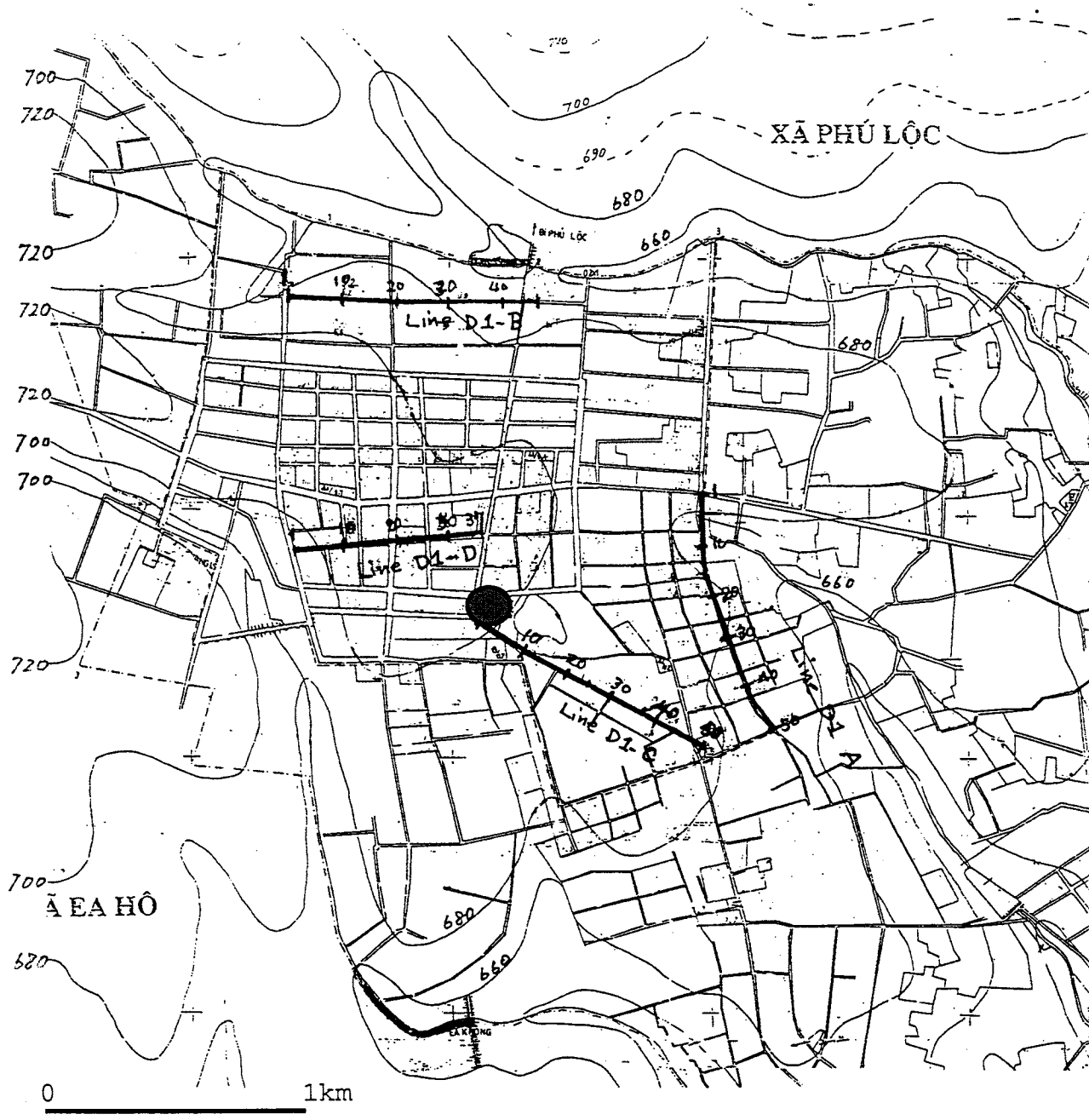


Figure D2. 3 Test Well and Geophysical Prospecting at Krong Nang Commune (D1)

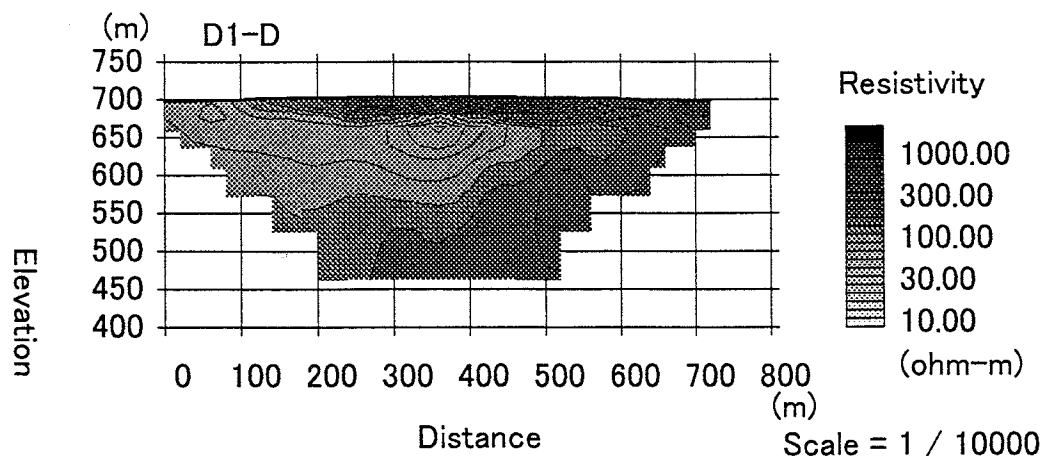
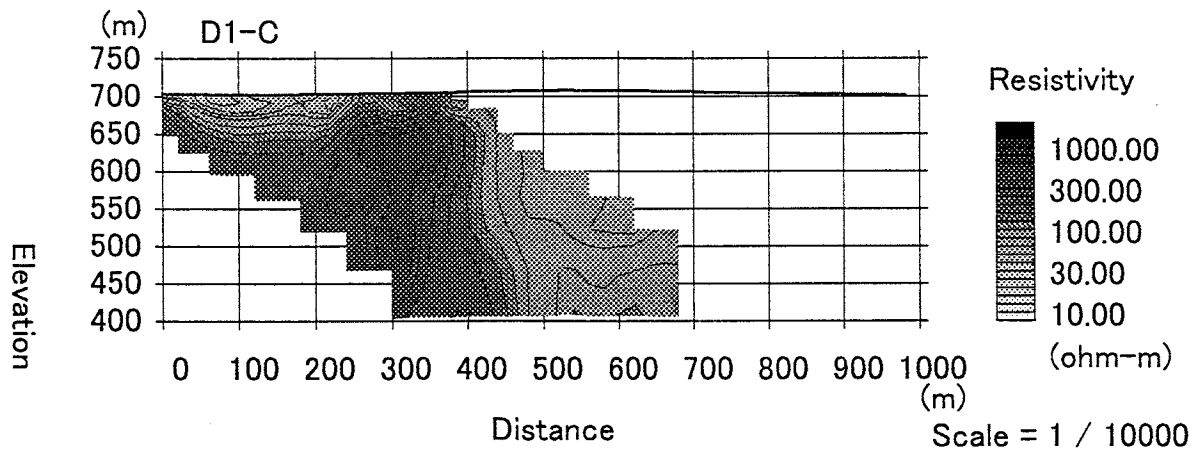
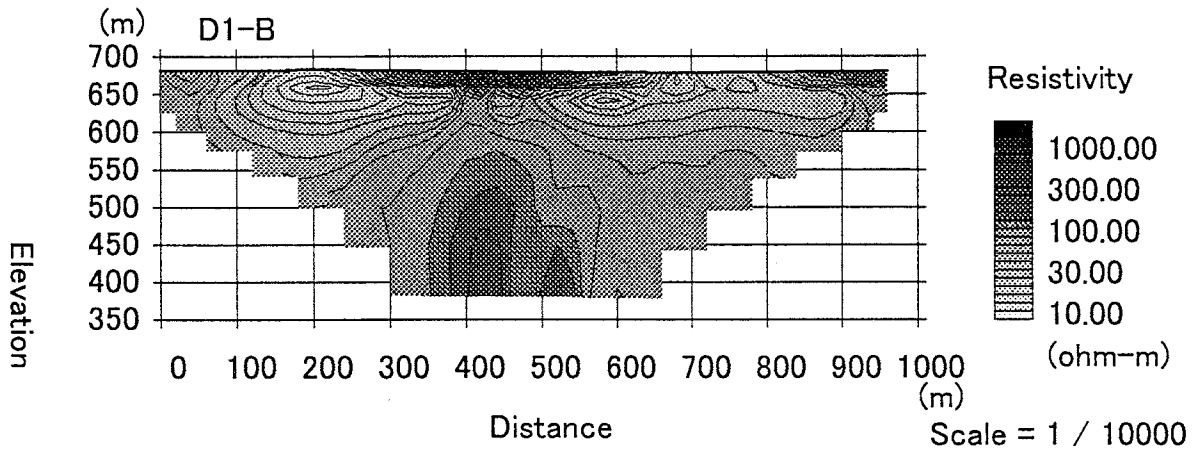
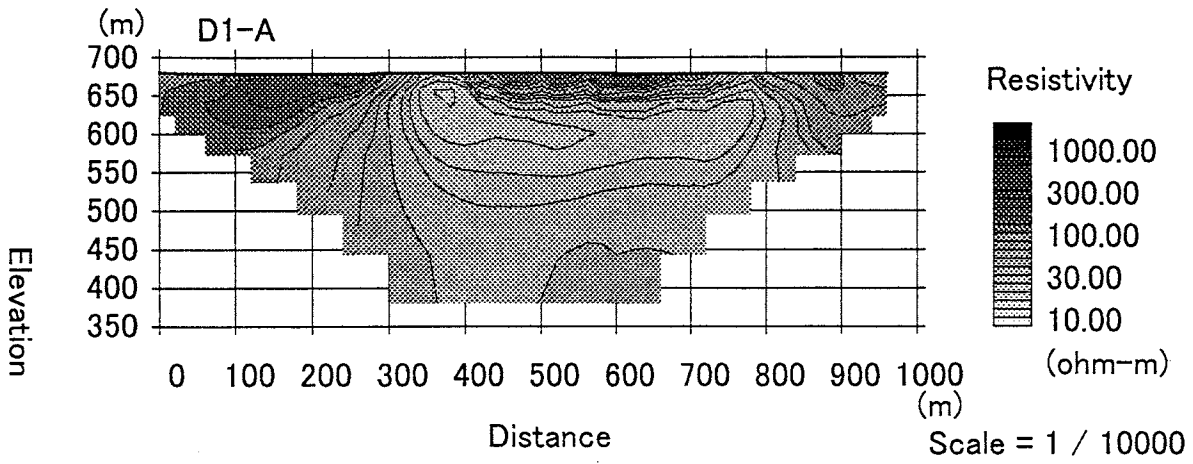


Figure D2. 4 Resistivity sections in Krong Nang Commune

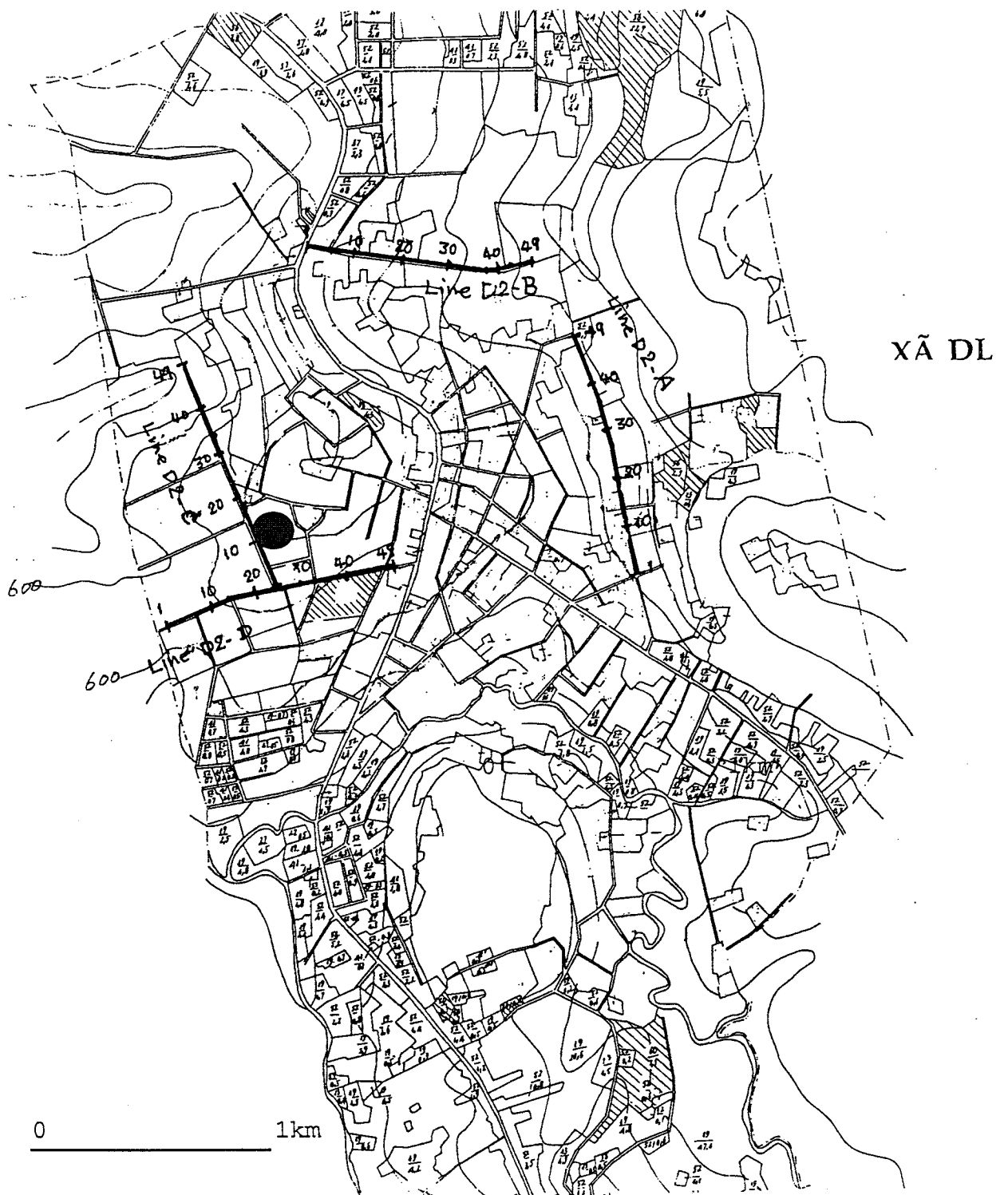


Figure D2. 5 Test Well and Geophysical Prospecting at Ea Drang Town (D2)

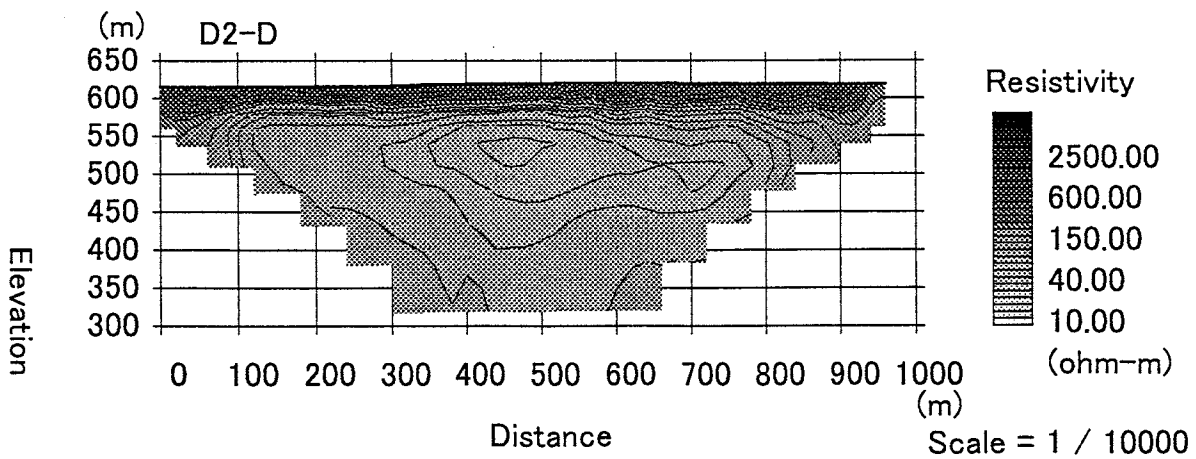
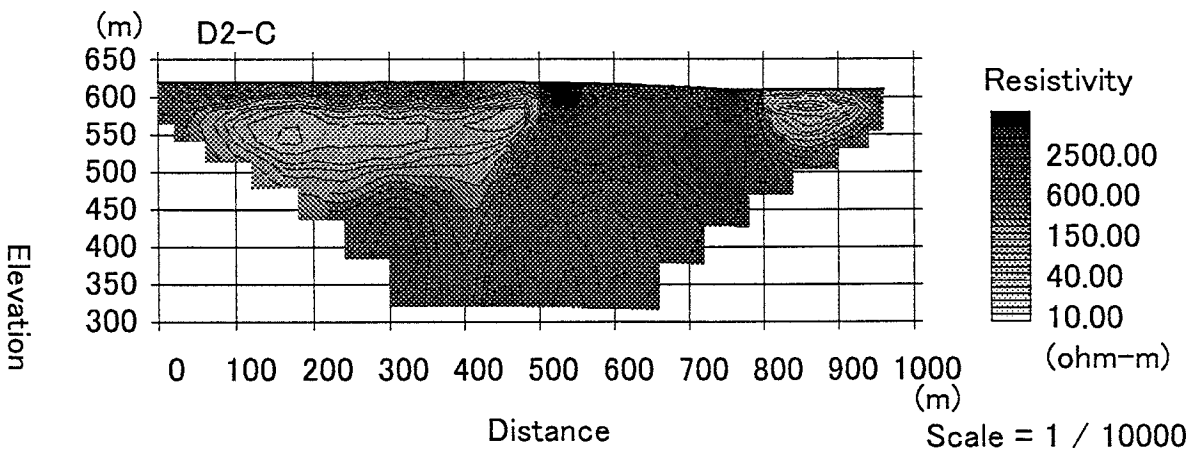
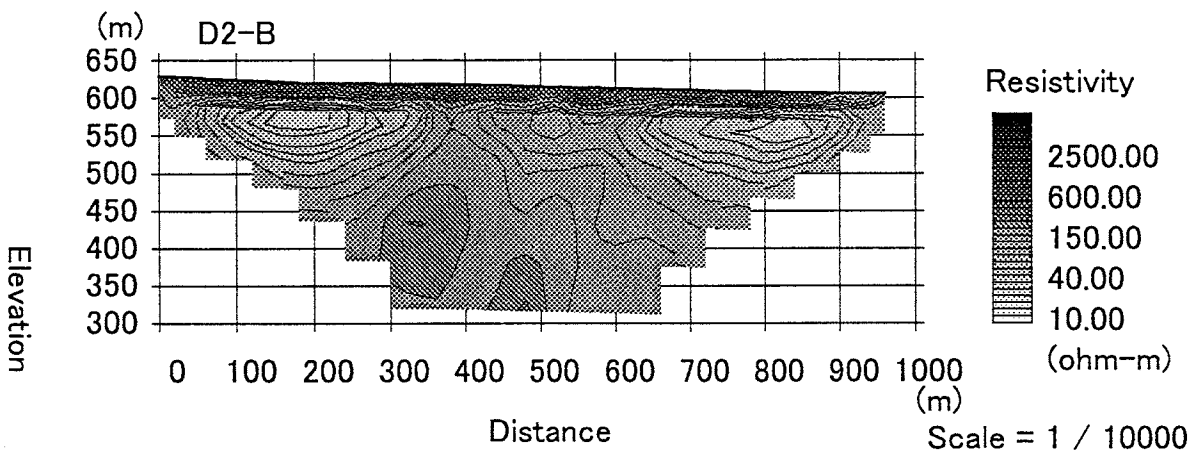
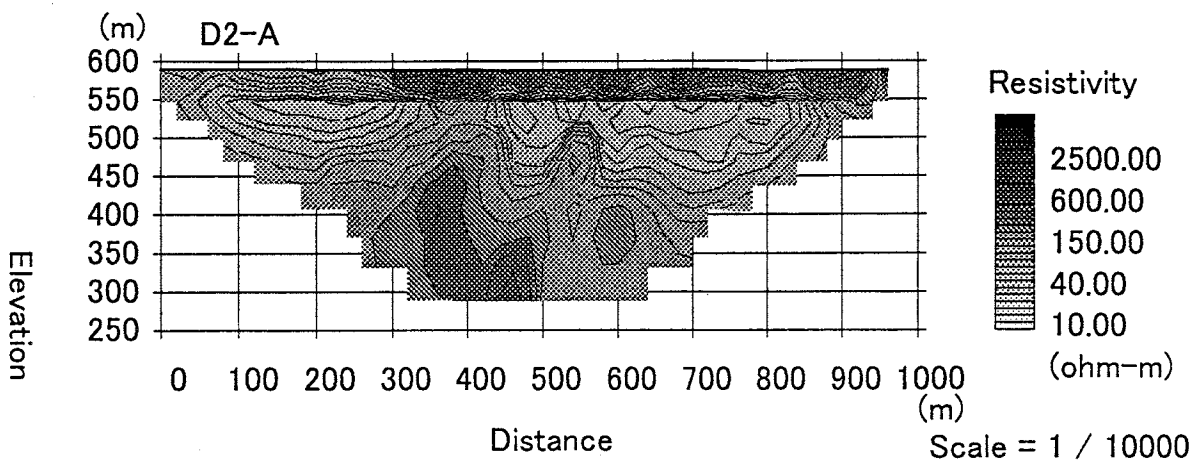


Figure D2. 6 Resistivity sections in Ea Drang Town

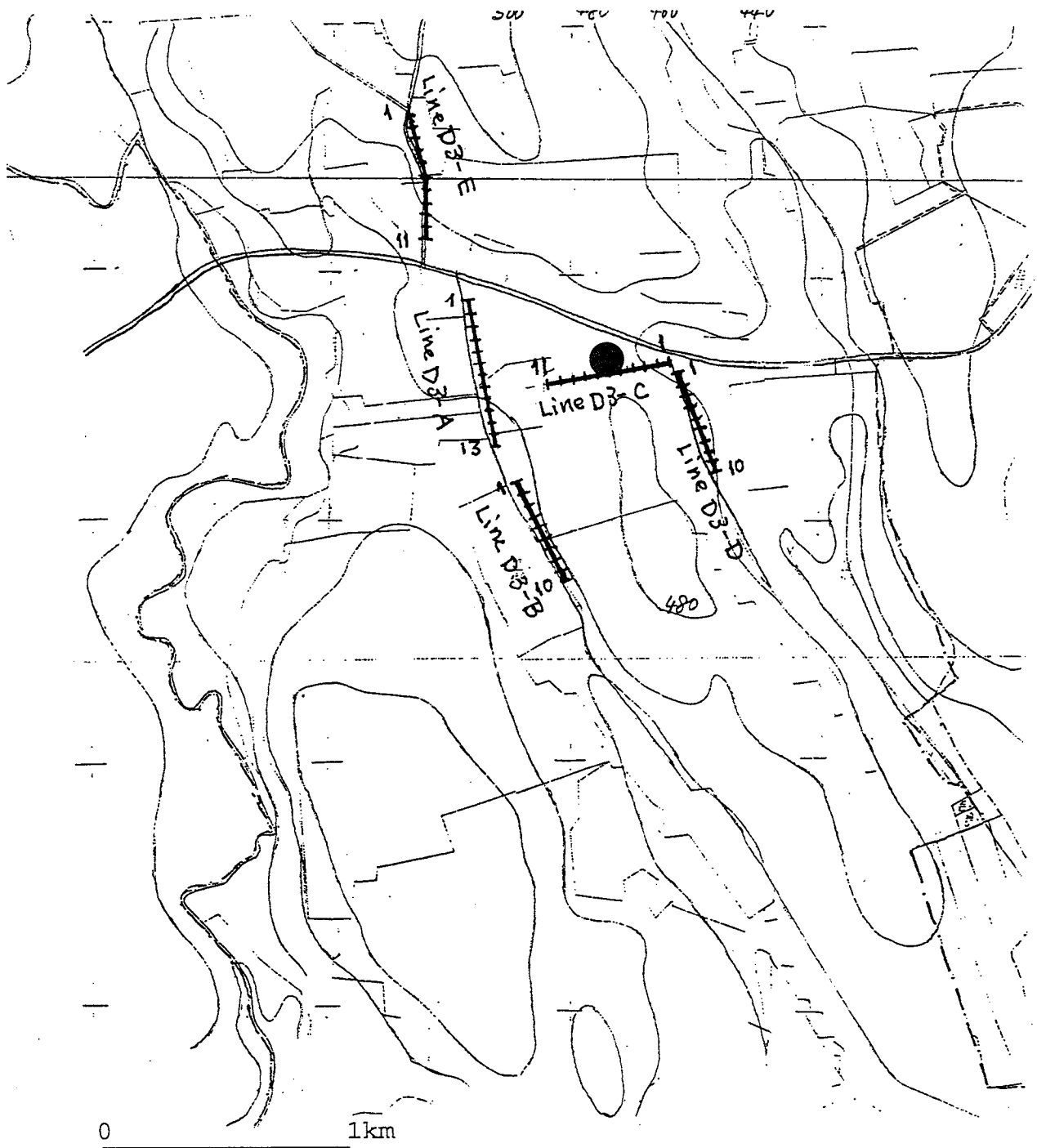


Figure D2. 7 Test Well and Geophysical Prospecting at Krong Buk Commune (D3)

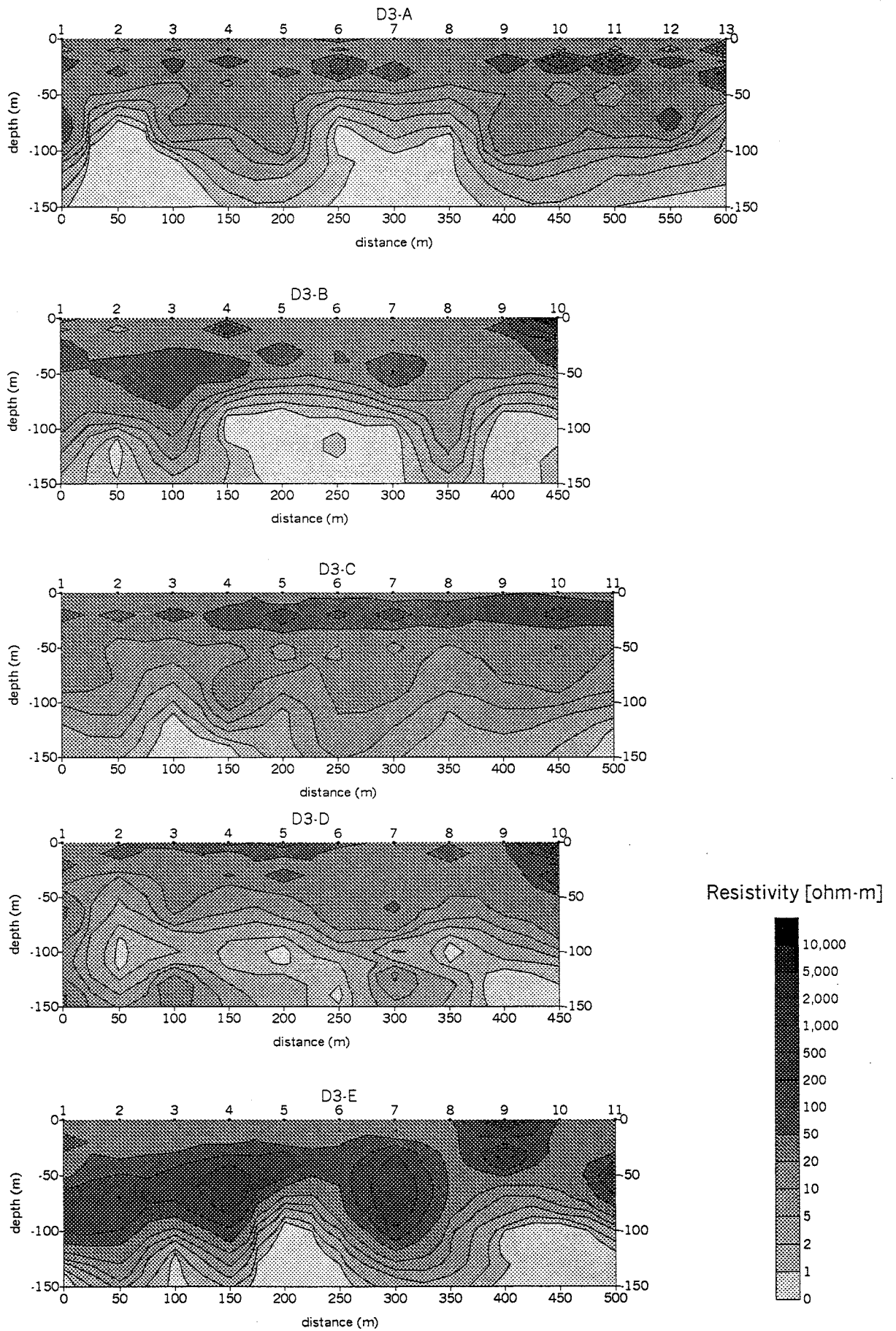


Figure D2. 8 Resistivity sections in Krong Buk Commune

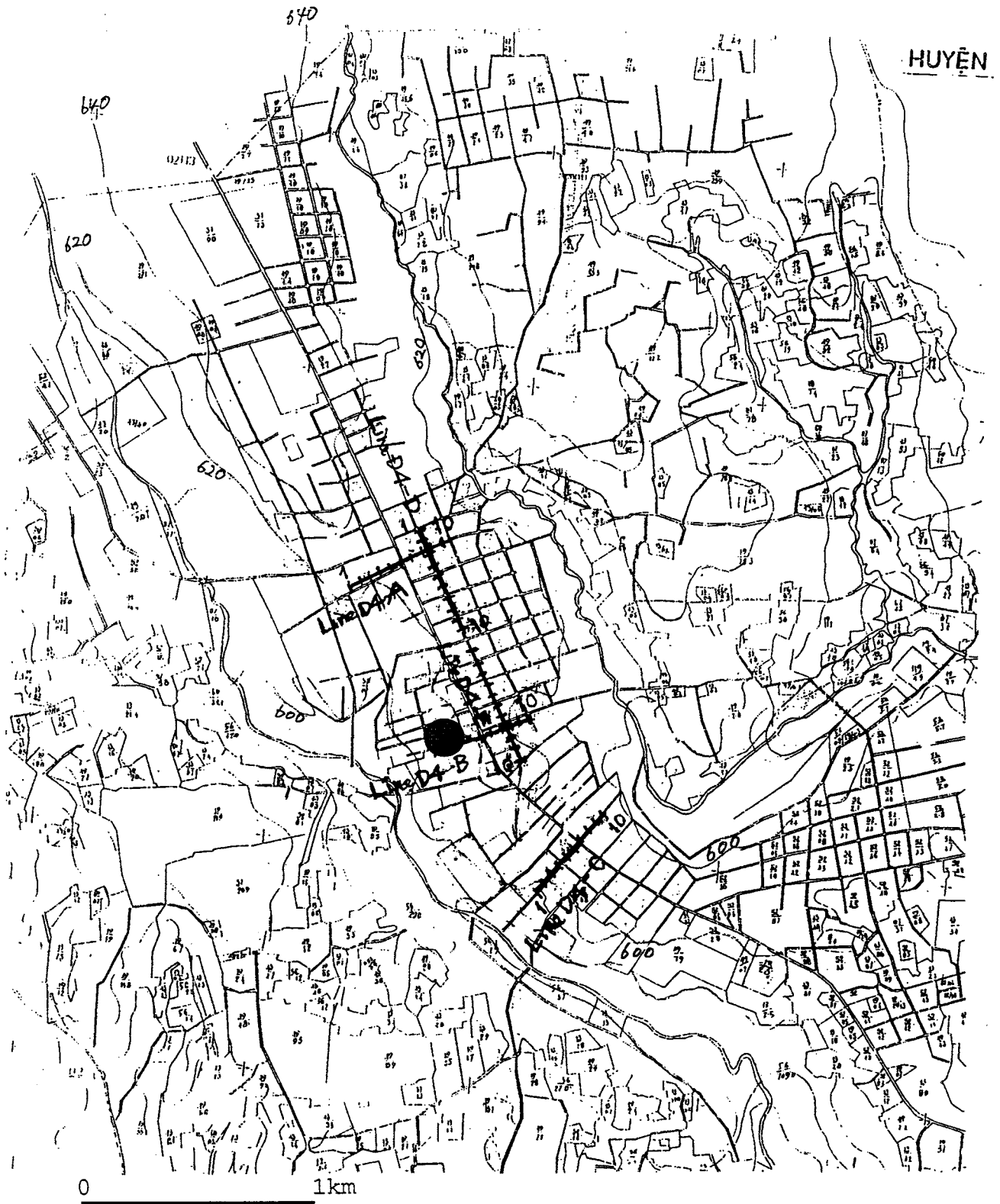


Figure D2. 9 Test Well and Geophysical Prospecting at Ea Drong Commune (D4)

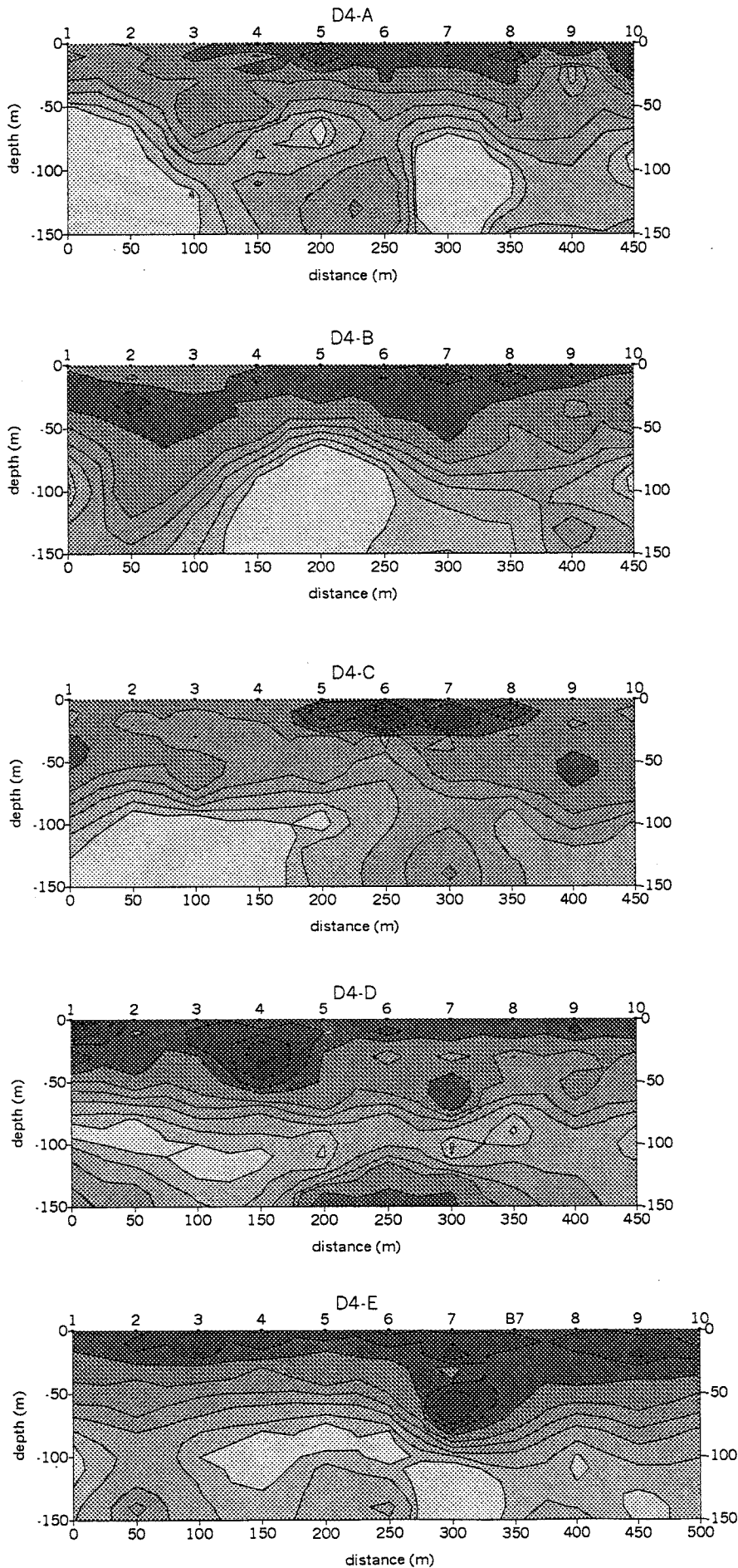


Figure D2. 10 Resistivity sections in Ea Drong Commune

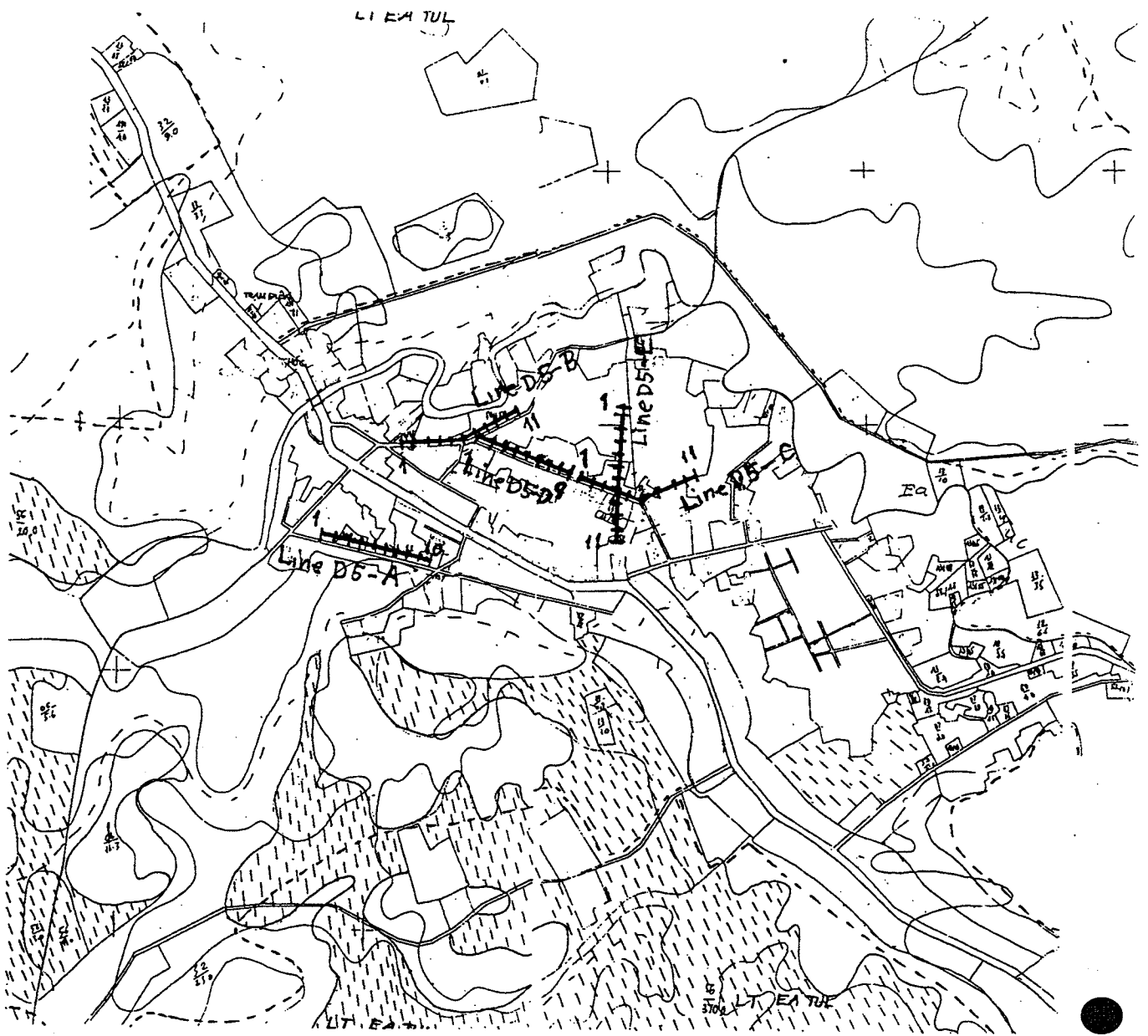


Figure D2. 11 Test Well and Geophysical Prospecting at Ea Wer Commune (D5)

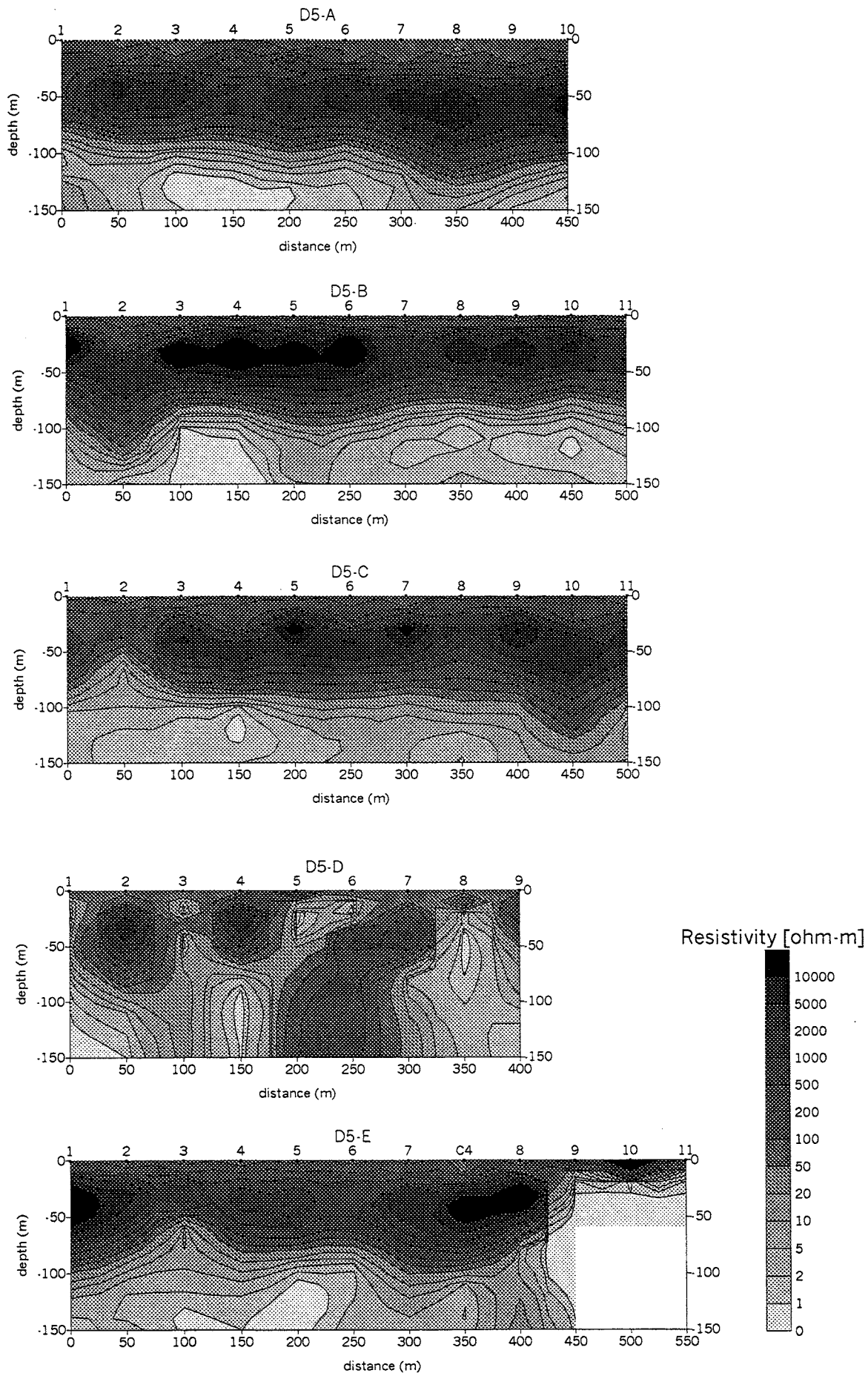


Figure D2. 12 Resistivity sections in Ea Wer Commune



Figure D2. 13 Test Well and Geophysical Prospecting at Kien Duc Town (D6)

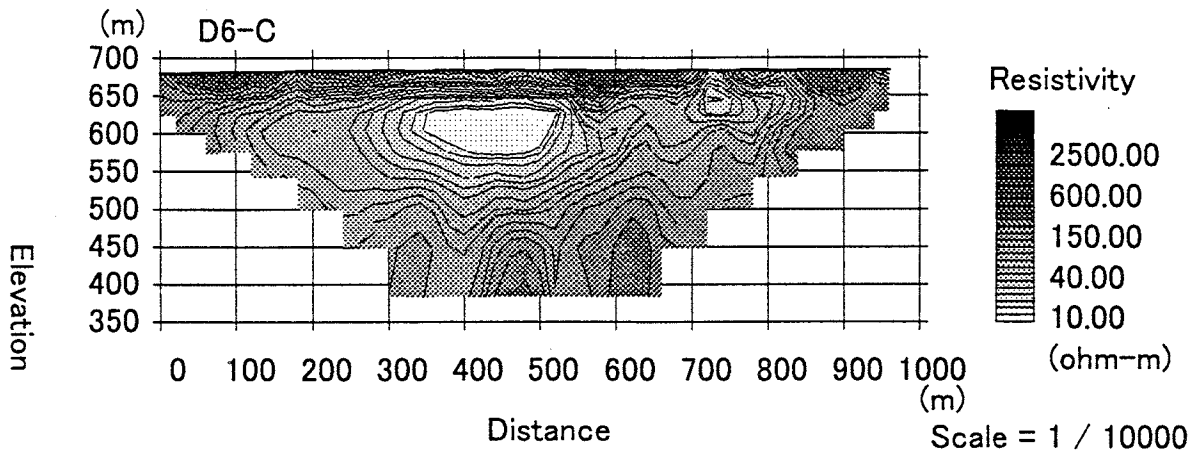
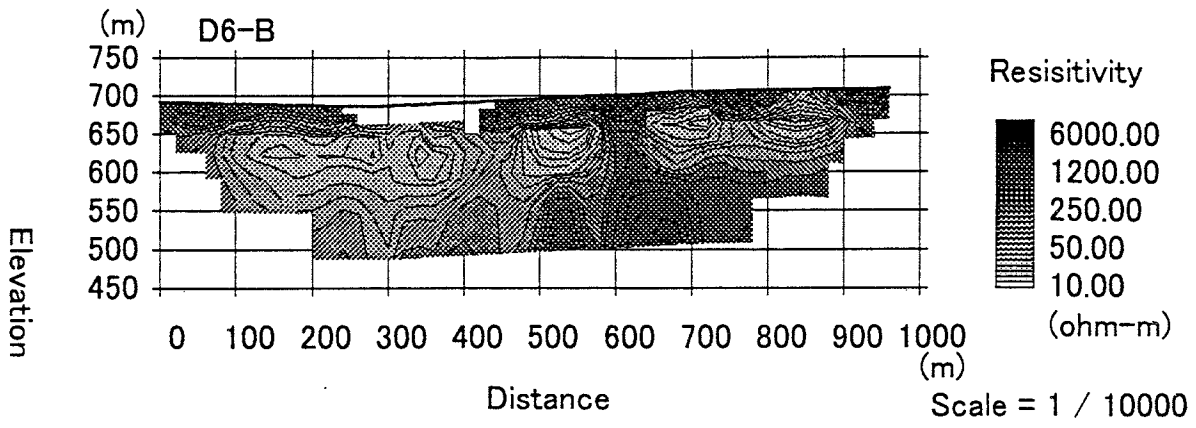


Figure A.4.18 (2/2) Resistivity sections in Kien Duc Commune (2)

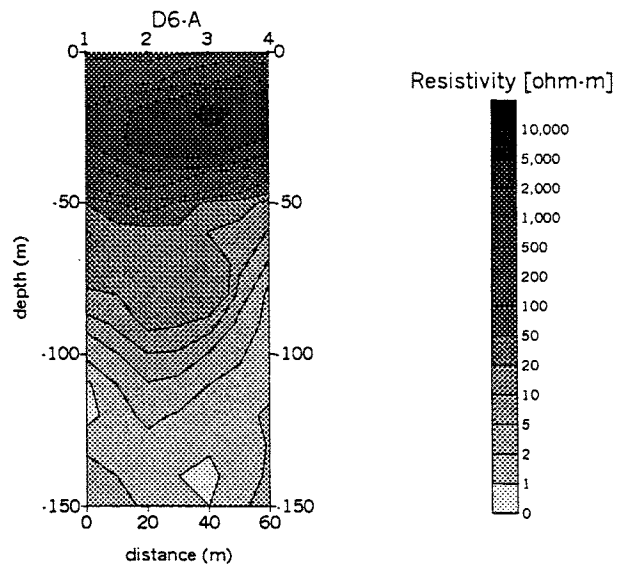


Figure D2. 14 Resistivity sections in Kien Duc Town

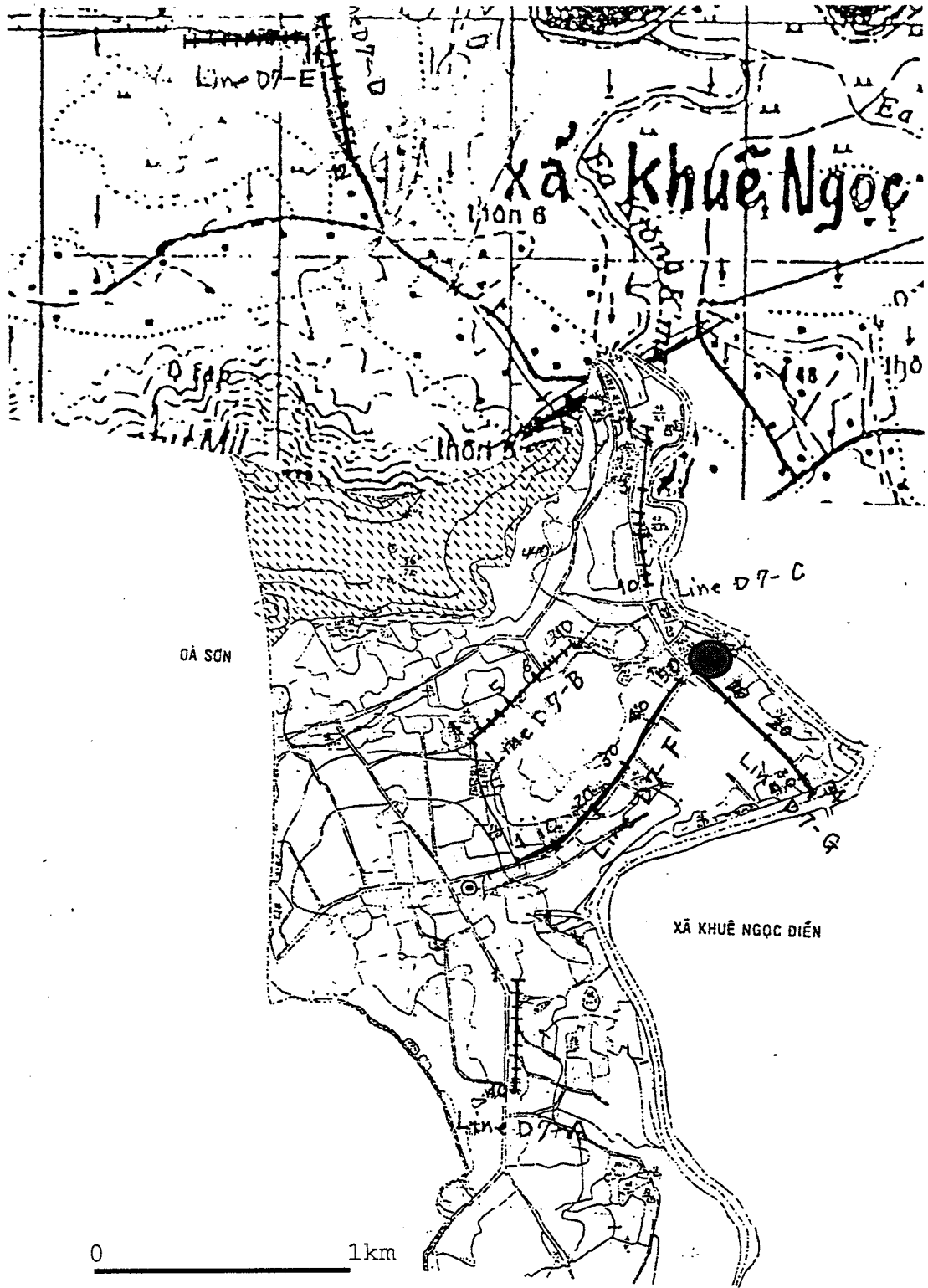


Figure D2. 15 Test Well and Geophysical Prospecting at Krong Kmar Town (D7)

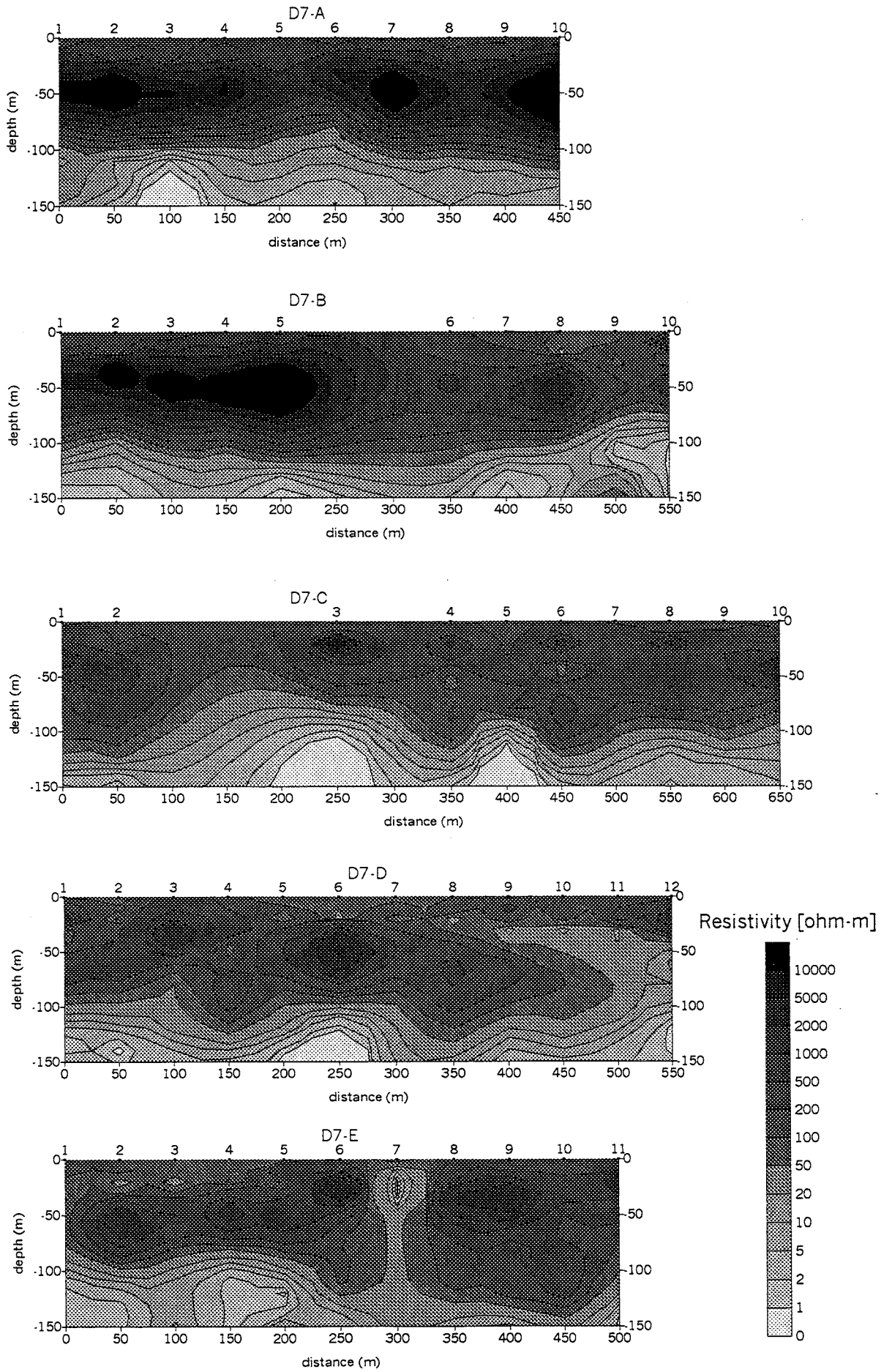


Figure D2. 16(1) Resistivity sections in Krong Kmar Town

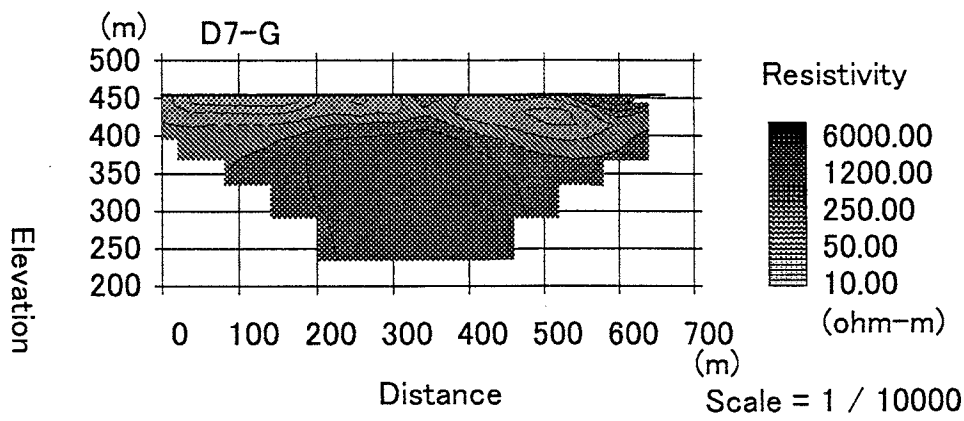
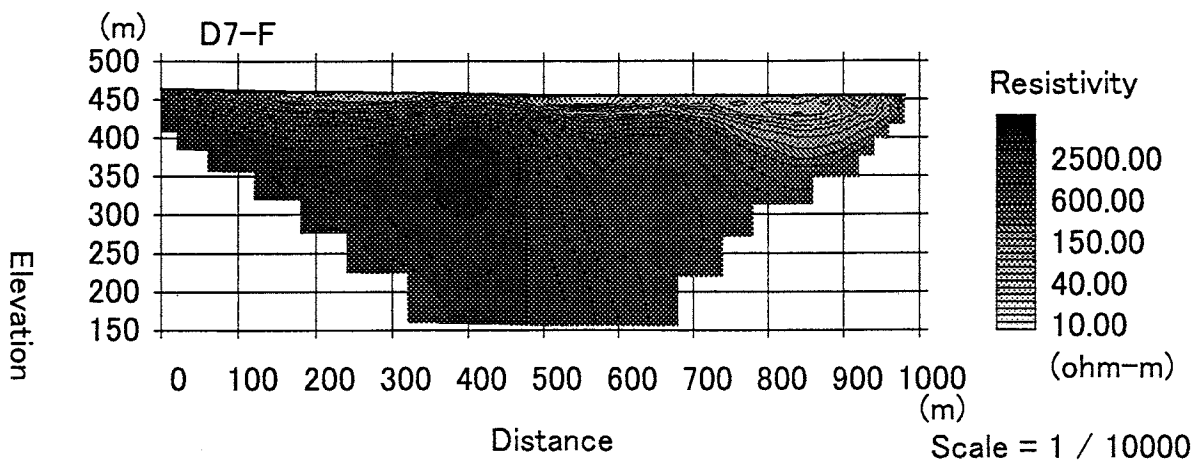


Figure D2. 16(2) Resistivity sections in Krong Kmar Town